



TIMBER SALE MAP

This information provided by authority of Part 525, 1994 PA 451, as amended.

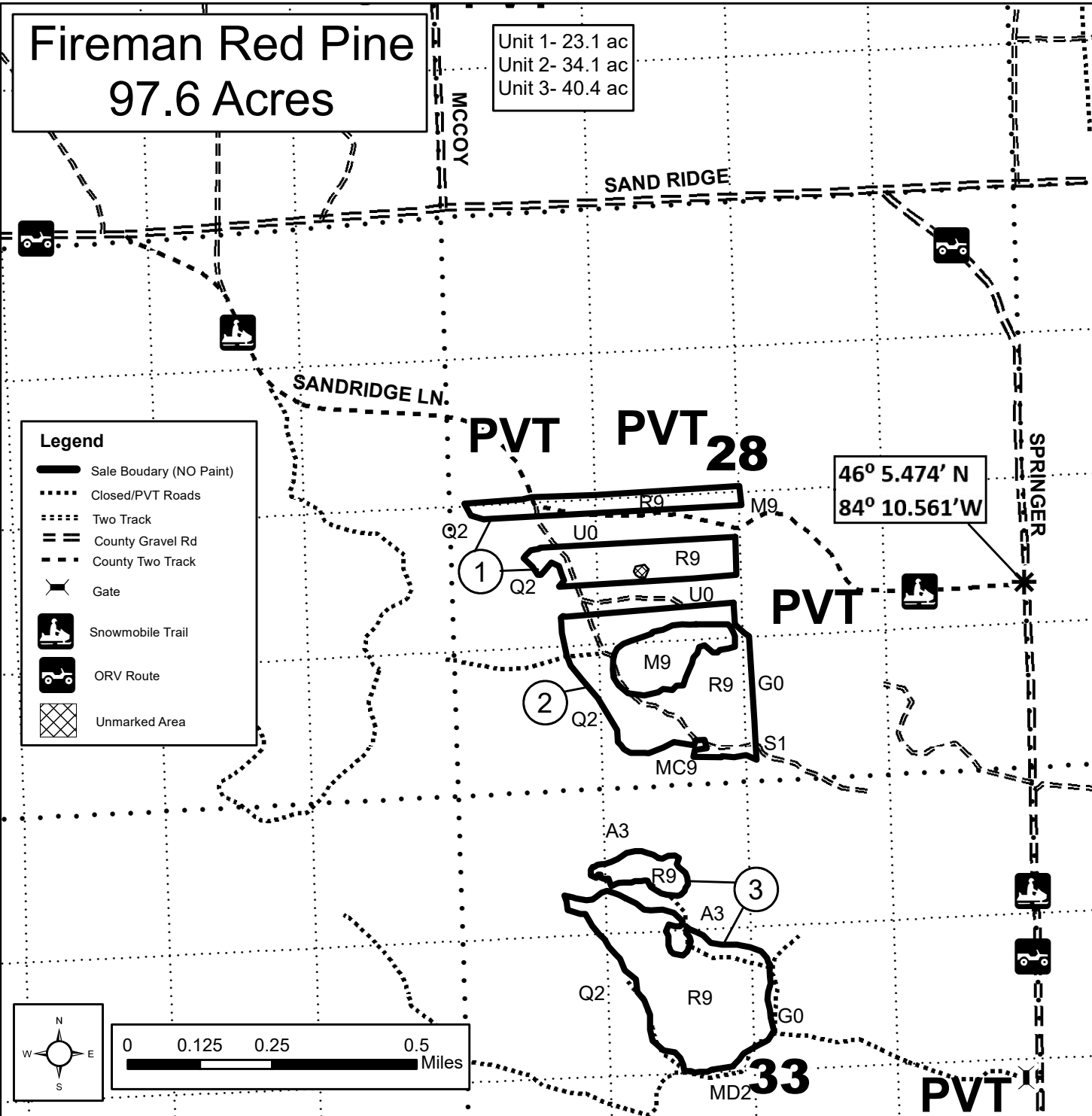
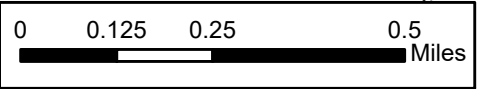
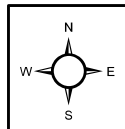
Forest Management Unit Sault Ste. Marie		County Chippewa	Mapped By Brinks	Date 05/19/2021	Page 1	of 1
Township T43N	Range R02E	Section(s) and Subdivision(s) Sec. 28- SW1/4, SWSE Sec. 33- NW1/4, SWNE	Cruised By Brinks	Scale 1:15,840 1 inch= 1/4 mile		
Cover Type			Density			
A = Aspen B = Paper Birch C = Cedar D = Treed Bog E = Swamp Hdwoods F = Spruce Fir G = Grass	H = Hemlock J = Jack Pine L = Lowland Brush LM = Lowland Mixed M = Mpl, Bch, Brch MC = Mixed Conifer MD = Mixed Deciduous	N = Marsh O = Oak P = Lowland Poplar Q = Mixed Swamp Conifer R = Red Pine S = Black Spruce T = Tamarack	U = Upland Brush UM = Upland Mixed V = Bog or Marsh W = White Pine X = Non Stocked Z = Water	0 = Non Stocked 1 = Seedling Sapling Poor 2 = Seedling Sapling Medium 3 = Seedling Sapling Well 4 = Pole Timber Poor	5 = Pole Timber Medium 6 = Pole Timber Well 7 = Saw Timber Poor 8 = Saw Timber Medium 9 = Saw Timber Well	

Fireman Red Pine 97.6 Acres

Unit 1- 23.1 ac
Unit 2- 34.1 ac
Unit 3- 40.4 ac

Legend

- Sale Boundary (NO Paint)
- Closed/PVT Roads
- Two Track
- County Gravel Rd
- County Two Track
- Gate
- Snowmobile Trail
- ORV Route
- Unmarked Area



46° 5.474' N
84° 10.561' W

PVT PVT 28

PVT

33

PVT