



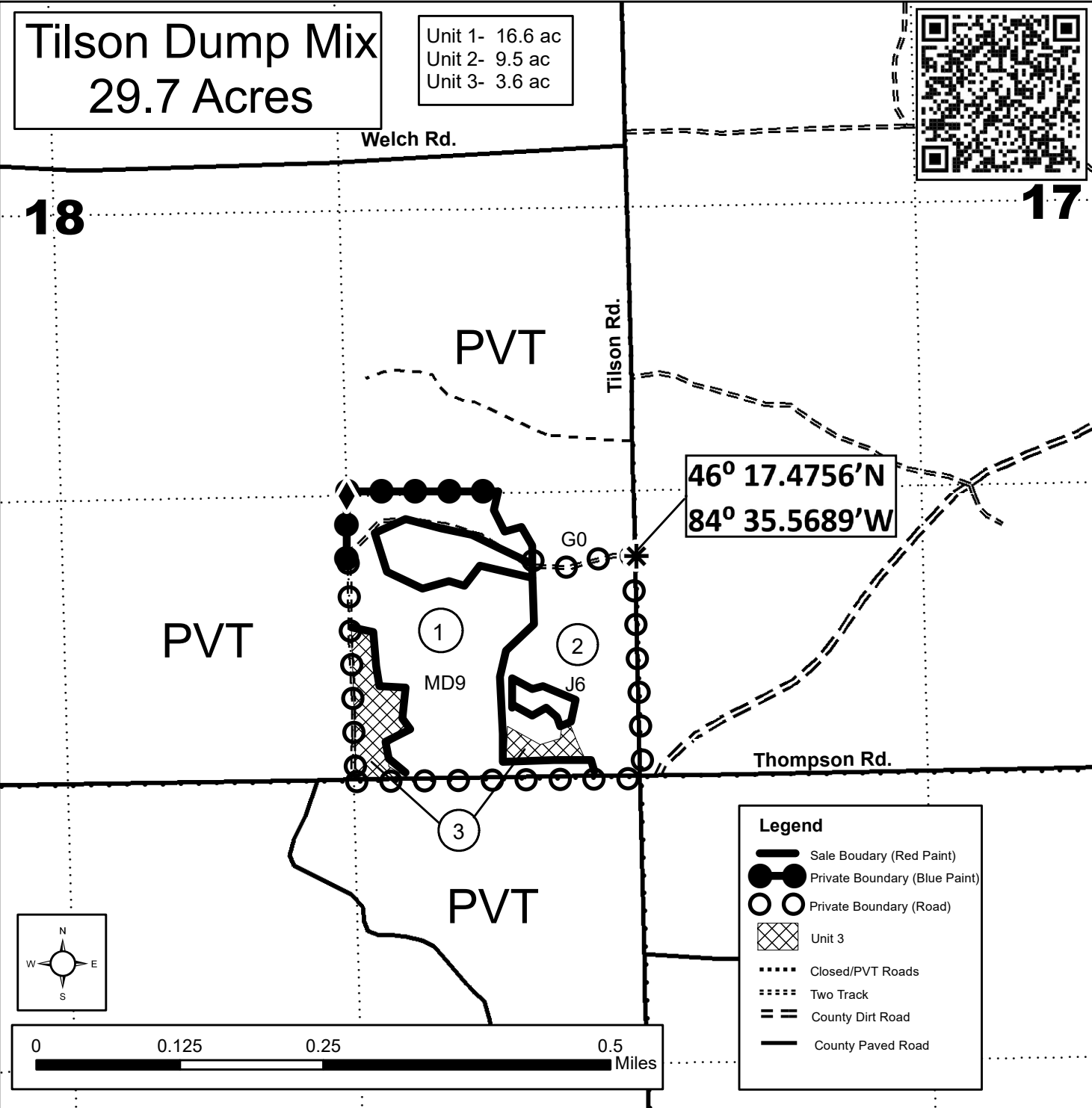
# TIMBER SALE MAP

This information provided by authority of Part 525, 1994 PA 451, as amended.

Forest Management Unit <b>Sault Ste. Marie</b>		County <b>Chippewa</b>	Mapped By <b>Brinks</b>	Date <b>06/18/21</b>	Page <b>1</b>	of <b>1</b>
Township <b>T45N</b>	Range <b>R02W</b>	Section(s) and Subdivision(s) <b>Sec. 18- SESE</b>		Scale <b>1:7920 1 inch= 1/8 mile</b>		
<b>Cover Type</b>				<b>Density</b>		
A = Aspen B = Paper Birch C = Cedar D = Treed Bog E = Swamp Hdwoods F = Spruce Fir G = Grass	H = Hemlock J = Jack Pine L = Lowland Brush LM = Lowland Mixed M = Mpl, Bch, Brch MC = Mixed Conifer MD = Mixed Deciduous	N = Marsh O = Oak P = Lowland Poplar Q = Mixed Swamp Conifer R = Red Pine S = Black Spruce T = Tamarack	U = Upland Brush UM = Upland Mixed V = Bog or Marsh W = White Pine X = Non Stocked Z = Water	0 = Non Stocked 1 = Seedling Sapling Poor 2 = Seedling Sapling Medium 3 = Seedling Sapling Well 4 = Pole Timber Poor	5 = Pole Timber Medium 6 = Pole Timber Well 7 = Saw Timber Poor 8 = Saw Timber Medium 9 = Saw Timber Well	

## Tilson Dump Mix 29.7 Acres

Unit 1- 16.6 ac  
 Unit 2- 9.5 ac  
 Unit 3- 3.6 ac



$46^{\circ} 17.4756'N$   
 $84^{\circ} 35.5689'W$