



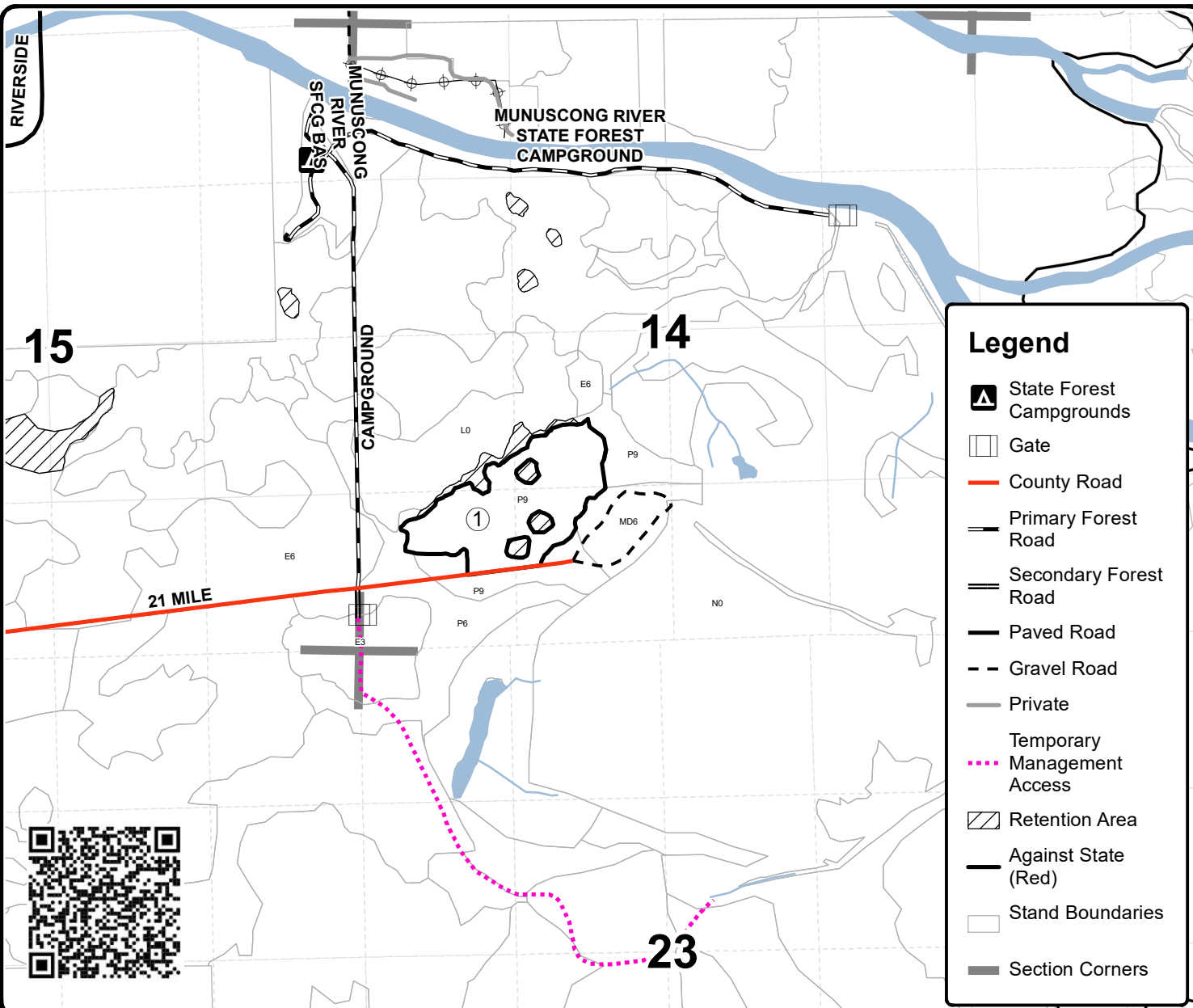
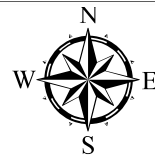
TIMBER SALE MAP

This information provided by authority of Part 525, 1994 PA 451, as amended.

Forest Management Unit Sault Ste Marie		County Chippewa	Mapped By Fanelli	Date 09/12/2022	Page 1	of 1
Township 44N	Range 01E	Section(s) and Subdivision(s) Section 14 SW		Scale 1:15,840		
Cover Type				Density		
A = Aspen	H = Hemlock	N = Marsh	U = Upland Brush	0 = Non Stocked	5 = Pole Timber Medium	
B = Paper Birch	J = Jack Pine	O = Oak	UM = Upland Mixed	1 = Seedling Sapling Poor	6 = Pole Timber Well	
C = Cedar	L = Lowland Brush	P = Lowland Poplar	V = Bog or Marsh	2 = Seedling Sapling Medium	7 = Saw Timber Poor	
D = Treed Bog	LM = Lowland Mixed	Q = Mixed Swamp Conifer	W = White Pine	3 = Seedling Sapling Well	8 = Saw Timber Medium	
E = Swamp Hdwoods	M = Mpl, Bch, Brch	R = Red Pine	X = Non Stocked	4 = Pole Timber Poor	9 = Saw Timber Well	
F = Spruce Fir	MC = Mixed Conifer	S = Black Spruce	Z = Water			
G = Grass	MD = Mixed Deciduous	T = Tamarack				

PU Acres
1 26.7

Jungle Aspen Compartment 56 26.7 Acres



Legend	
	State Forest Campgrounds
	Gate
	County Road
	Primary Forest Road
	Secondary Forest Road
	Paved Road
	Gravel Road
	Private
	Temporary Management Access
	Retention Area
	Against State (Red)
	Stand Boundaries
	Section Corners

