



TIMBER SALE MAP

This information provided by authority of Part 525, 1994 PA 451, as amended.

Sale Number	Year
45-002-22	2022

Forest Management Unit Sault Ste. Marie	County Chippewa	Mapped By Brinks	Date 08/29/22	Page 1	of 1
Township T45N	Range R03W	Section(s) and Subdivision(s) Sec. 2- W1/2, S1/2SE, NWSE Sec. 11- SWSW Sec. 11-NWNW, E1/2NE Sec. 12- W1/2NW	Scale 1:15,840 1 inch= 1/4 mile		

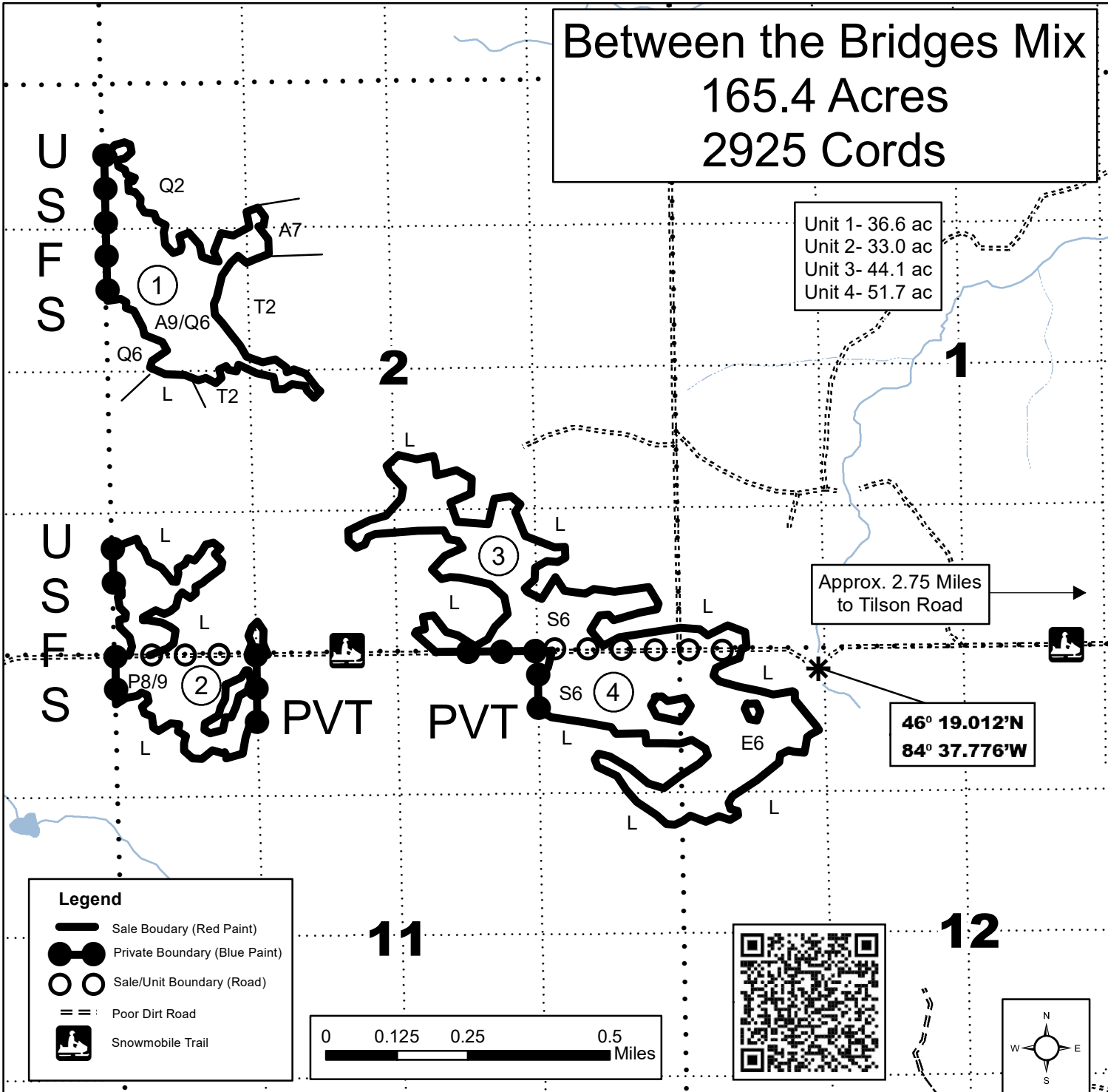
Cover Type				Density	
A = Aspen	H = Hemlock	N = Marsh	U = Upland Brush	0 = Non Stocked	5 = Pole Timber Medium
B = Paper Birch	J = Jack Pine	O = Oak	UM = Upland Mixed	1 = Seedling Sapling Poor	6 = Pole Timber Well
C = Cedar	L = Lowland Brush	P = Lowland Poplar	V = Bog or Marsh	2 = Seedling Sapling Medium	7 = Saw Timber Poor
D = Treed Bog	LM = Lowland Mixed	Q = Mixed Swamp Conifer	W = White Pine	3 = Seedling Sapling Well	8 = Saw Timber Medium
E = Swamp Hdwoods	M = Mpl. Bch. Brch	R = Red Pine	X = Non Stocked	4 = Pole Timber Poor	9 = Saw Timber Well
F = Spruce Fir	MC = Mixed Conifer	S = Black Spruce	Z = Water		
G = Grass	MD = Mixed Deciduous	T = Tamarack			

Between the Bridges Mix
165.4 Acres
2925 Cords

Unit 1- 36.6 ac
 Unit 2- 33.0 ac
 Unit 3- 44.1 ac
 Unit 4- 51.7 ac

Approx. 2.75 Miles
to Tilson Road

46° 19.012'N
84° 37.776'W



Legend

	Sale Boundary (Red Paint)
	Private Boundary (Blue Paint)
	Sale/Unit Boundary (Road)
	Poor Dirt Road
	Snowmobile Trail

