



TIMBER SALE MAP

This information provided by authority of Part 525, 1994 PA 451, as amended.

Sale Number	Date	
45-804-24	08/12/2024	
Scale	Page	Of
1:20,000	1	1

Forest Management Unit	County	Mapped By: A. Livermore
Sault Ste. Marie	Chippewa	Cruised By: Newberry Unit Staff

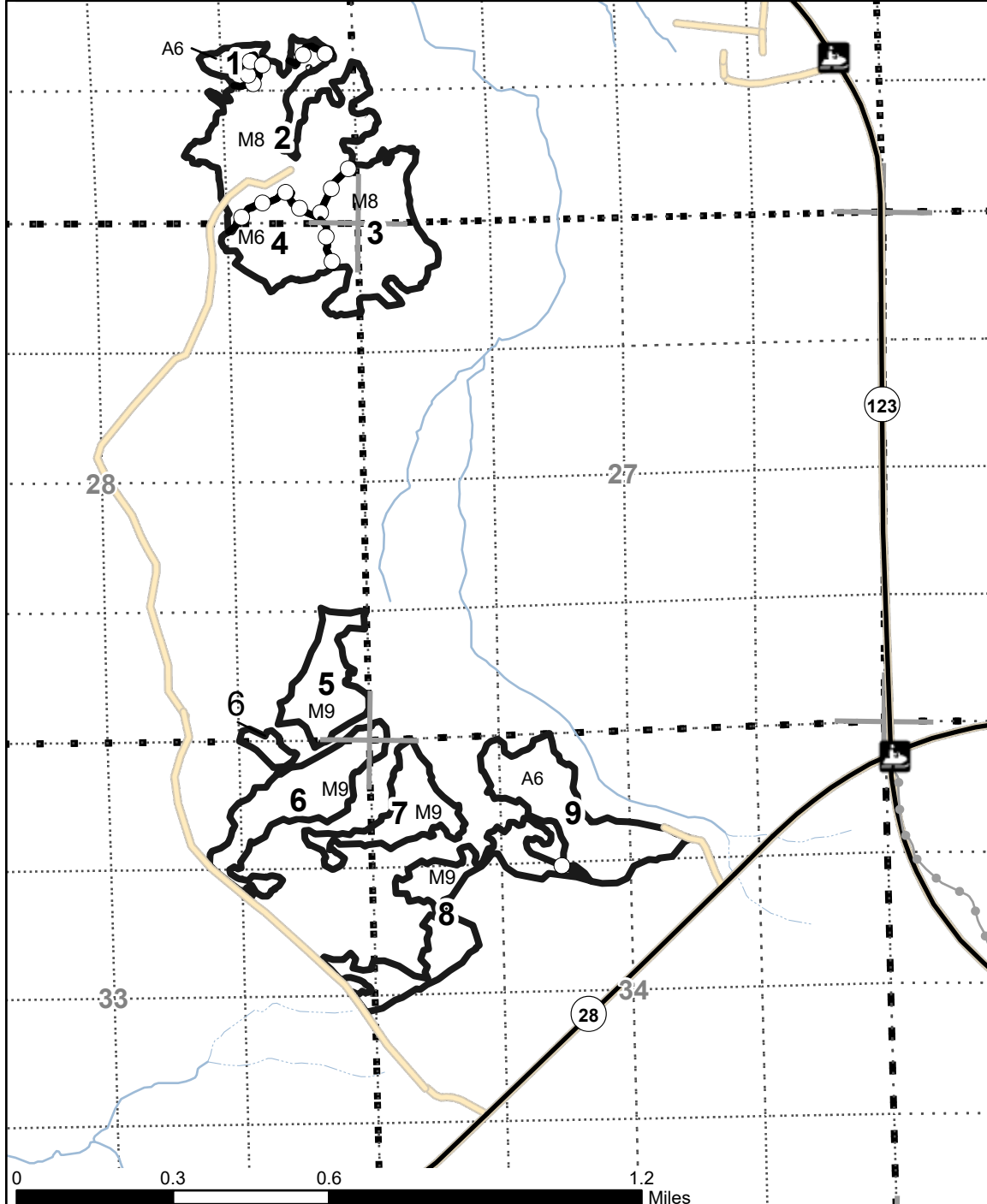
Township	Range	Section(s) and SE1/4 sec. 21; W1/2SW sec. 22; NENE sec. 28; NWNW, SWSW sec. 27; SESE sec. 28; NE1/4 sec.
T46N	R08W	Subdivision(s) NW1/4, NWNE sec. 34

Cover Type

A = Aspen	J = Jack Pine	O = Oak	U = Upland Brush
B = Paper Birch	K = Rock	P = Lowland Poplar	UM = Upland Mix Forest
C = Cedar	L = Lowland Brush	Q = Mixed Swamp Conifer	V = Bog or Marsh
D = Treed Bog	LM = Lowland Mix Forest	R = Red Pine	W = White Pine
E = Swamp Hardwoods	M = Maple, Beech, Birch	S = Black Spruce	X = Non Stocked
F = Spruce/Fir	MC = Mixed Conifer	T = Tamarack	Y = Sand
G = Grass	MD = Mixed Deciduous	Z = Water	
H = Hemlock	N = Marsh		

Density

0 = Non Stocked	5 = Pole Timber Medium
1 = Seedling Sapling Poor	6 = Pole Timber Well
2 = Seedling Sapling Medium	7 = Saw Timber Poor
3 = Seedling Sapling Well	8 = Saw Timber Medium
4 = Pole Timber Poor	9 = Saw Timber Well



PU #	Acres	PU #	Acres
1	4.8	6	25
2	41.5	7	14.3
3	29.1	8	24.7
4	16	9	26.3
5	14.9		

Legend

- Payment Unit (Orange)
- Sections
- Payment Unit (Orange)
- Recreational Trail
- Non-DNR Road
- Highway
- MIRIS Section Corner



196.6 Acres

