

GREEN WOODLAND ACRES No 2
 A SUBDIVISION OF PART OF S.E. 1/4, S.E. 1/4,
 SECTION 23, T.24N. R.6E, OSCODA TOWNSHIP,
 LOSCO COUNTY, MICHIGAN.
 SURVEYED TUBE 1958
 SCALE 1 INCH = 50 FEET

APPROVAL BY COUNTY PLAT BOARD
 This plat was approved on the 29th day of June 1958 by the Losco County Plat Board

Albert H. Buch (County Register of Deeds)
 George A. Prosser (County Clerk)
 Grace L. Miller (County Treasurer)
 E. H. Sticker (County Drain Commissioner)

APPROVAL BY BOARD OF COUNTY ROAD COMMISSIONERS
 This plat has been examined and was approved on the 29th day of June 1958 by the Losco County Board of Road Commissioners

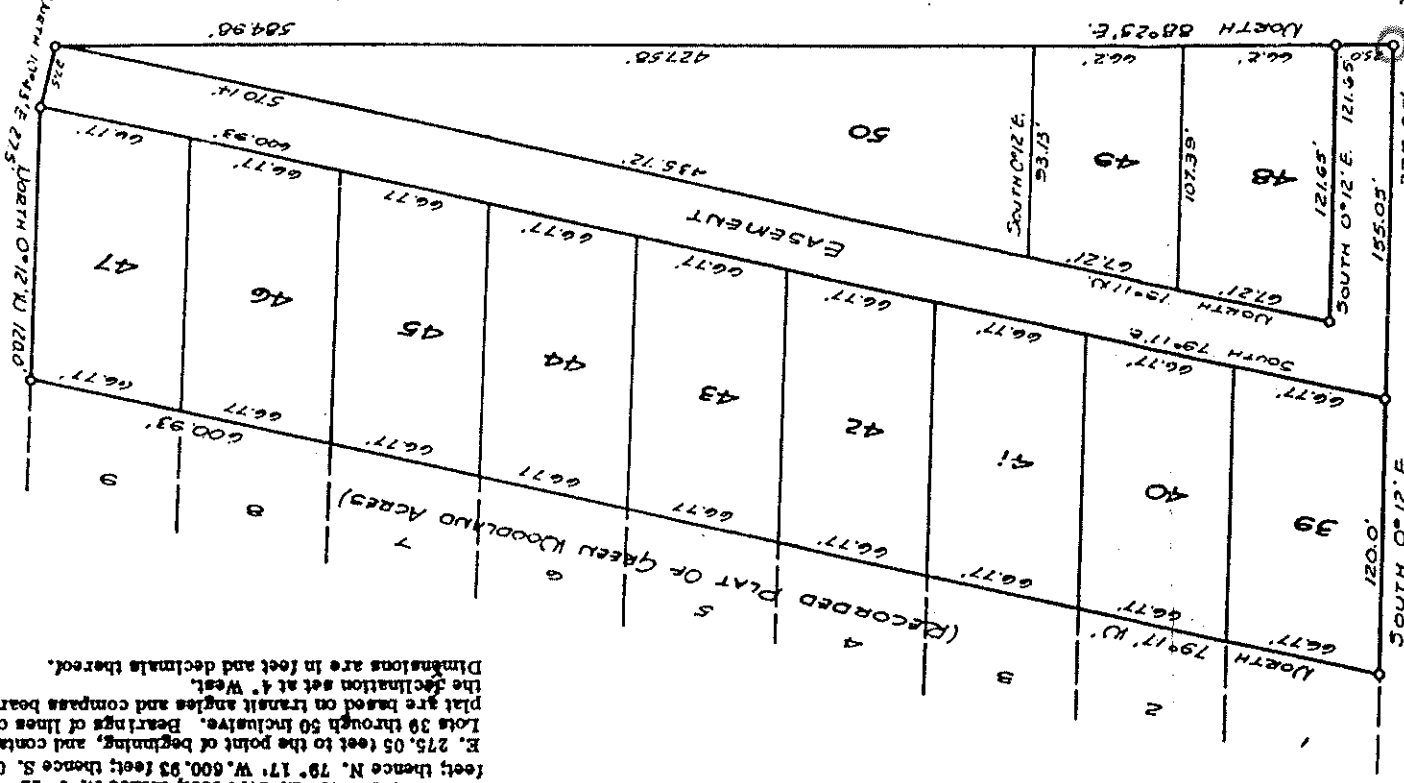
W.D. Nunn (Member)
 A.J. Kalarich (Member)
 Clarence Curry (Chairman)

SURVEYOR'S CERTIFICATE
 I hereby certify that the plat hereon delineated is a correct one and that payment made in accordance with the provisions of the plat as shown on said plat.

CERTIFICATE OF MUNICIPAL APPROVAL
 S. A. Tokoly (Registered Land Surveyor, Professional Engineer)
 This plat was approved by the Township Board of Oscoda Township, Michigan, at a meeting held February 7, 1958, and is in compliance with Section 19a of the Michigan Public Health Act of 1929, as amended.

COUNTY TREASURER'S CERTIFICATE
 Roy H. Taitford (Clerk)
 Office of County Treasurer, Losco County, Michigan
 I hereby certify that there are no tax liens or taxes held by the State on the lands described herein, and that there are no tax liens or taxes held by individuals on said lands for the five years preceding the 31st day of May 1958, and that the taxes for said period of five years are all paid, as shown by the records of this office.

EXAMINED AND APPROVED
 Date: February 13, 1958
 Billie S. Farnum (Auditor General)
 Received for record the 14th day of February, 1958
 Notary Public, D. 1961, D. 1960
 H. M. and recorded in Liber 10, Page 33
 Registrar of Deeds



DESCRIPTION OF LAND PLATS
 The land embraced in the annexed plat is Green Woodland Acres No. 2, a subdivision of part of S.E. 1/4, S.E. 1/4, Section 23, T. 24N. R. 6E., Oscoda Township, Losco County, Michigan.
 It described as follows: Beginning at the S.W. corner of S.E. 1/4, S.E. 1/4, Section 23, T. 24N. R. 6E., Oscoda Township, Losco County, Michigan; thence N. 88° 25' E. 584.98 feet; thence N. 10° 43' E. 27.5 feet; thence N. 0° 12' W. 120 feet; thence N. 79° 17' W. 600.93 feet; thence S. 0° 12' E. 275.05 feet to the point of beginning, and containing Lots 39 through 50 inclusive. Bearings of lines on this plat are based on transit angles and compass bearings. The declination set at 4° West.
 Dimensions are in feet and decimals thereof.

ACKNOWLEDGMENT
 STATE OF MICHIGAN
 County of Losco
 On this 19th day of January 1958, before me, Notary Public, Losco County, Michigan, Roy H. Taitford, Roy H. Taitford, Devere A. Knack and Marie A. Knack, his wife, known to me to be the persons who executed the above described and acknowledged History Public in and for said County, personally came the above named Devere A. Knack and Marie A. Knack, his wife.
 My Commission expires June 4, 1963

DEEDITION
 KNOW ALL MEN BY THESE PRESENTS, that we, Devere A. Knack and Marie Ann Knack, as proprietors, have caused the land embraced in the annexed plat to be surveyed, laid out and platted, to be known as Green Woodland Acres No. 2, a subdivision of part of S.E. 1/4, S.E. 1/4, Section 23, T. 24N. R. 6E., Oscoda Township, Losco County, Michigan, and that the streets and easement as shown on said plat are hereby dedicated to the use of lot owners only.
 Signed and sealed in the presence of William F. Loren (Notary Public), Devere A. Knack, Marie Ann Knack, and Marie A. Knack (Witness)