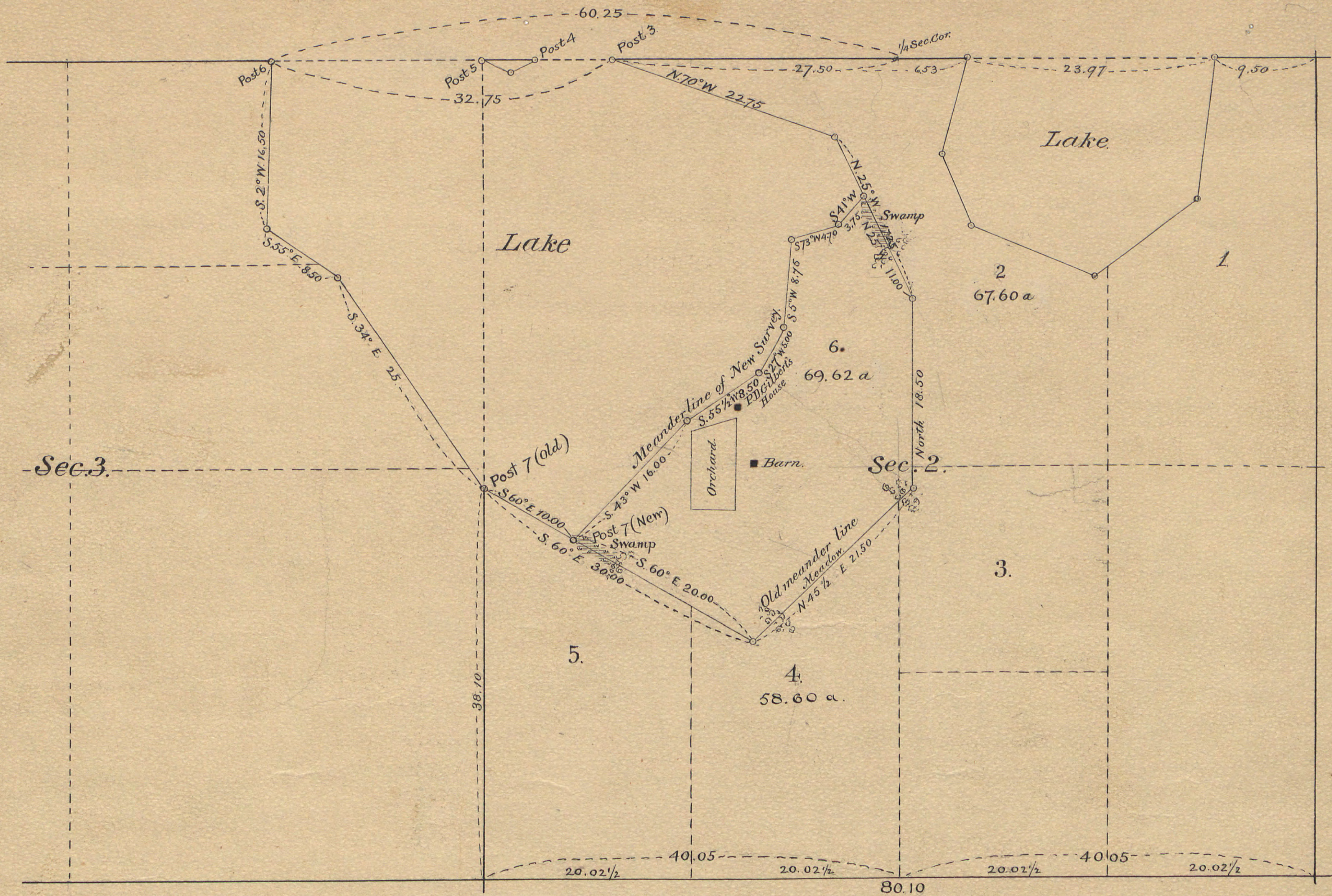


3410/19



Sec. 3.

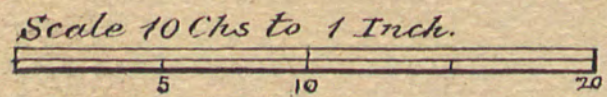
Sec. 2.

Diagram of a

Piece of Land bordering on a lake in Sec. 2 T. 15 N. R. 15 W.

Michigan.

Note. The House, Barn and Orchard of P.D. Gilbert are laid down on this diagram as represented on Map prepared by the Deputy Surveyor.



Department of the Interior, General Land Office, February 7, 1889.

Whereby certify that the above is a plat of a Piece of Land in Section 2, T. 15 N. R. 15 W. State of Michigan, made in accordance with Section 2219 U.S. Revised Statutes.

D. H. [Signature]

Commissioner and

Ex-Officio Surveyor General of Michigan.

J. B. S. [Signature]

FOOT COPY