

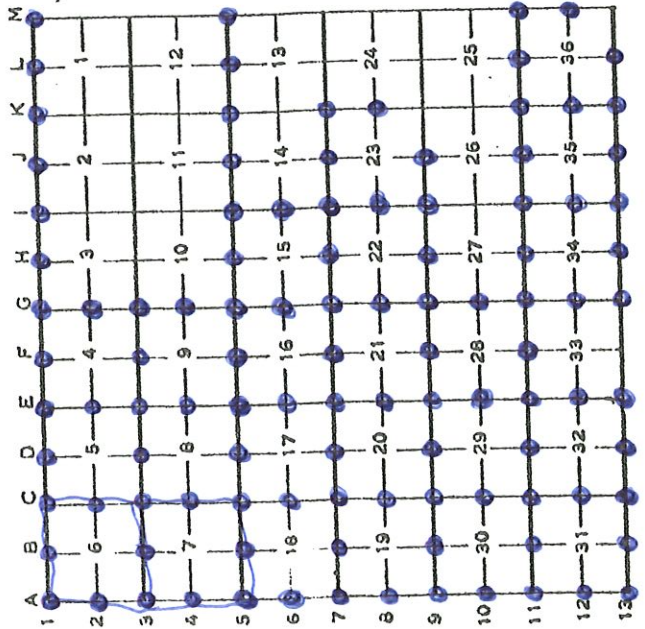




INDEX TO PUBLIC LAND SURVEY CORNER RECORDATIONS FILED IN

TOWN 16 NORTH SOUTH, RANGE 74 EAST WEST Newaygo Co.

TOWNSHIP CORNER NUMBERING CODE DIAGRAM



*Ramon*

CORNER INDEX

CODE NO.	FILING NUMBER	CODE NO.	FILING NUMBER
G-1	_____	K-1	_____
G-2	_____	K-2	_____
G-3	_____	K-3	_____
G-4	_____	K-4	_____
G-5	_____	K-5	_____
G-6	_____	K-6	_____
G-7	_____	K-7	_____
G-8	_____	K-8	_____
G-9	_____	K-9	_____
G-10	_____	K-10	_____
G-11	_____	K-11	_____
G-12	_____	K-12	_____
G-13	_____	K-13	_____

CORNER INDEX

CODE NO.	FILING NUMBER	CODE NO.	FILING NUMBER
A-1	_____	H-1	_____
A-2	_____	H-2	_____
A-3	_____	H-3	_____
A-4	_____	H-4	_____
A-5	_____	H-5	_____
A-6	_____	H-6	_____
A-7	_____	H-7	_____
A-8	_____	H-8	_____
A-9	_____	H-9	_____
A-10	_____	H-10	_____
A-11	_____	H-11	_____
A-12	_____	H-12	_____
A-13	_____	H-13	_____

B-1	_____	I-1	_____
B-2	_____	I-2	_____
B-3	_____	I-3	_____
B-4	_____	I-4	_____
B-5	_____	I-5	_____
B-6	_____	I-6	_____
B-7	_____	I-7	_____
B-8	_____	I-8	_____
B-9	_____	I-9	_____
B-10	_____	I-10	_____
B-11	_____	I-11	_____
B-12	_____	I-12	_____
		M-1	_____
		M-2	_____
		M-3	_____
		M-4	_____
		M-5	_____
		M-6	_____
		M-7	_____
		M-8	_____
		M-9	_____
		M-10	_____
		M-11	_____
		M-12	_____

RESEARCH CHECKLIST

Project Name: Washington - Big South Branch Unit: \_\_\_\_\_

Section(s): 6:7 Town: 16N Range: 14W County: Newaygo  
Section(s): \_\_\_\_\_ Town: \_\_\_\_\_ Range: \_\_\_\_\_ County: \_\_\_\_\_  
Section(s): \_\_\_\_\_ Town: \_\_\_\_\_ Range: \_\_\_\_\_ County: \_\_\_\_\_

Forest Service Ownership from Status Atlas:  
Typed into Word doc and saved to Pinyon: \_\_\_\_\_  
Deeds copied for non-aliquot parcels or exceptions: \_\_\_\_\_  
List any encumbrances from pink and yellow pages: \_\_\_\_\_  
\_\_\_\_\_  
\_\_\_\_\_

Maps: Quad \_\_\_\_\_ Current Plat Book \_\_\_\_\_ Historical Plat Book \_\_\_\_\_  
Acquisition Map (Manistee Only) \_\_\_\_\_ 1938 Aerials \_\_\_\_\_

RESEARCH:

GLO Survey Date Exterior Lines Ran: \_\_\_\_\_ Date Sub Lines Ran: \_\_\_\_\_  
Plat \_\_\_\_\_ Notes \_\_\_\_\_

Corners: Remon LCRCs  FS LCRCs  FS Field Books  FS Corner Cards   
SLTT File & Yellow Slips \_\_\_\_\_ County Courthouse \_\_\_\_\_

County Surveyor Records: \_\_\_\_\_

FS Files Searched: Research and USFS records only

Subdivision Plats searched for in included and surrounding sections: \_\_\_\_\_  
\_\_\_\_\_

Recorded Surveys: \_\_\_\_\_  
\_\_\_\_\_  
\_\_\_\_\_

Other Sources of Information:

MDNR \_\_\_\_\_ Consumers Power \_\_\_\_\_ Private Surveyors \_\_\_\_\_

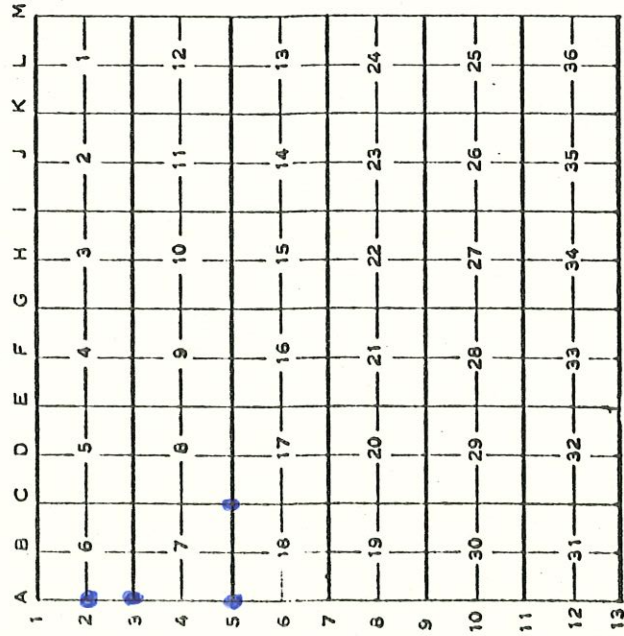
Railroads \_\_\_\_\_ Fargo \_\_\_\_\_ Norlin Records \_\_\_\_\_



INDEX TO PUBLIC LAND SURVEY CORNER RECORDATIONS FILED IN

TOWN 16 NORTH SOUTH, RANGE 14 EAST WEST

TOWNSHIP CORNER NUMBERING CODE DIAGRAM



CORNER INDEX

CODE NO.	FILING NUMBER	CODE NO.	FILING NUMBER
G-1		K-1	
G-2		K-2	
G-3		K-3	
G-4		K-4	
G-5		K-5	
G-6		K-6	
G-7		K-7	
G-8		K-8	
G-9		K-9	
G-10		K-10	
G-11		K-11	
G-12		K-12	
G-13		K-13	

CORNER INDEX

CODE NO.	FILING NUMBER	CODE NO.	FILING NUMBER
A-1		D-1	
A-2		D-2	
A-3		D-3	
A-4		D-4	
A-5		D-5	
A-6		D-6	
A-7		D-7	
A-8		D-8	
A-9		D-9	
A-10		D-10	
A-11		D-11	
A-12		D-12	
A-13		D-13	
B-1		E-1	
B-2		E-2	
B-3		E-3	
B-4		E-4	
B-5		E-5	
B-6		E-6	
B-7		E-7	
B-8		E-8	
B-9		E-9	
B-10		E-10	
B-11		E-11	
B-12		E-12	
B-13		E-13	
C-1		F-1	
C-2		F-2	
C-3		F-3	
C-4		F-4	
C-5		F-5	
C-6		F-6	
C-7		F-7	
C-8		F-8	
C-9		F-9	
C-10		F-10	
C-11		F-11	
C-12		F-12	
C-13		F-13	
D-1		H-1	
D-2		H-2	
D-3		H-3	
D-4		H-4	
D-5		H-5	
D-6		H-6	
D-7		H-7	
D-8		H-8	
D-9		H-9	
D-10		H-10	
D-11		H-11	
D-12		H-12	
D-13		H-13	
E-1		I-1	
E-2		I-2	
E-3		I-3	
E-4		I-4	
E-5		I-5	
E-6		I-6	
E-7		I-7	
E-8		I-8	
E-9		I-9	
E-10		I-10	
E-11		I-11	
E-12		I-12	
E-13		I-13	
F-1		J-1	
F-2		J-2	
F-3		J-3	
F-4		J-4	
F-5		J-5	
F-6		J-6	
F-7		J-7	
F-8		J-8	
F-9		J-9	
F-10		J-10	
F-11		J-11	
F-12		J-12	
F-13		J-13	

TOWN 12 NORTH SOUTH, RANGE 6 EAST WEST, BLUMFIELD TWP.

1994 NEWAYGO COUNTY REMONUMENTATION PROJECT  
**LAND CORNER RECORDATION CERTIFICATE**  
 Filing Requirement of Act 74, Mich. P.A. 1970

For corners in

Newaygo (County)

Located in:

1. Public Land Survey

16N 14W

Corner Code #:

A-2

2. Property Controlling

S

in Section

S

3. Miscellaneous

S

Property in Sec.

S

4. Lot No. \_\_\_\_\_, Recorded Plat \_\_\_\_\_

5. Private Claims \_\_\_\_\_

I, Norman L. Ochs, in a field survey on February 25, 1994

do hereby certify that under requirements of P.A. 74, Michigan P.A. of 1970, the corner points mentioned in lines 1 and 2 above were in conformance with regulations and rules therefore as required in the current manual of survey instructions of the United States Department of the Interior, Bureau of Land Management or by a decree of a Court of Law and/or that the corner points mentioned in lines 3, 4 and 5 above were in conformance with the rules of the Michigan Board of Land Surveyors or by a Decree of a Court of Law; established, re-established, monumented, re-monumented, recovered, found as expressed below:

**NOTE: Not more than 4 corners, all in the same town and range, may be recorded on this certificate.**

W. 1/4 Corner, Section 6, Troy Twp., Newaygo County, MI

A. Description of original monument and accessories and/or subsequent restoration:

6 G.L.O. Mullett, Brookfield 1837 Forest Service ~~Plat~~

8 Birch S80°W 17 lks. (11.22') #1

10 Hemlock N48°W 30 lks. (19.80') #2 should probably be extended East to intersect the Twp. line to recover this corner location.

"Water Wonderland No. 2" Bernard Feldhauser R.L.S. #10695 April 24, 1978

Its position seems to agree with the information provided on the face of the plat, that is, it seems to lie on the extension of the East and West 1/4 line using the bearing and corner information provided by the plat map.

B. Description of corner evidence found and/or method applied in restoring or reestablishing corner:

Found ~~2~~ Iron pipe and a 1/2" Iron rod in two different locations. With the 2" Iron Pipe I also found a pine post with a U.S.F.S. location tag on it (not legible). I feel the 1/2" Iron Rod is the correct location for the original section corner because it fits best with the G.L.O. proration. I measured 2647.57 feet from the S.W. Cor. to the W. 1/4 Cor. of Sec. 6 and measured 2732.34 feet from the W. 1/4 Cor. to the N.W. Cor. of Sec. 6 and the condition of the recorded witnesses are: #1 and #2 Gone.

C. Description of monument for corner and accessories established to perpetuate locating the position of the corner:

Removed 1/2" Iron Rod and set a 4" dia. Harrison Cast Iron Monument 20" long marked "County Surveyor" as a substantial marker for the section corner and is accepted as a careful and faithful reestablishment of the original corner.

2 1/2" O.D. Pipe N06°E 109.09'

18" Cedar N70°E 31.45' Nail in root

10" Cedar S75°E 56.64' Nail in root

3" W. Pine N65°W 56.64' Nail in root

Register of Deeds Stamp & File Number

	A	B	C	D	E	F	G	H	I	J	K	L
2	6	5	4	3	2							
3												
4	7	8	9	10	11	12						
5												
6	18	17	16	15	14	13						
7												
8	19	20	21	22	23	24						
9												
10	30	29	28	27	26	25						
11												
12	31	32	33	34	35	36						
13												

Signed by

Norman L. Ochs #222439

Surveyor's Michigan License No.

Date

November 21, 1994

Approved by Peer Review Group on  
 Norman L. Ochs, County Representative.

1994



1993 NEMAYGO COUNTY REMONUMENTATION PROJECT

LAND CORNER RECORDATION CERTIFICATE  
Filing Requirement of Act 74, Mich. P.A. 1970

For corners in

NEMAYGO  
(County)

Located in:

Corner Code --#

- |                                    |                           |       |
|------------------------------------|---------------------------|-------|
| 1. Public Land Survey              | T <u>16N</u> R <u>14W</u> | A-5   |
|                                    | T _____ R _____           | _____ |
|                                    | T _____ R _____           | _____ |
|                                    | T _____ R _____           | _____ |
| 2. Property Controlling in Section | S _____ R _____           | _____ |
|                                    | S _____ R _____           | _____ |
| 3. Miscellaneous                   | S _____ R _____           | _____ |
| Property in Sec.                   | S _____ R _____           | _____ |

4. Lot No. \_\_\_\_\_, Recorded Plat \_\_\_\_\_
5. Private Claims \_\_\_\_\_

Register of Deeds Stamp & File Number

	A	B	C	D	E	F	G	H	I	J	K	L
2	6	5	4	3	2	1						
3	7	6	5	4	3	2	1					
4	8	7	6	5	4	3	2	1				
5	9	8	7	6	5	4	3	2	1			
6	10	9	8	7	6	5	4	3	2	1		
7	11	10	9	8	7	6	5	4	3	2	1	
8	12	11	10	9	8	7	6	5	4	3	2	1
9	13	12	11	10	9	8	7	6	5	4	3	2
10	14	13	12	11	10	9	8	7	6	5	4	3
11	15	14	13	12	11	10	9	8	7	6	5	4
12	16	15	14	13	12	11	10	9	8	7	6	5
13	17	16	15	14	13	12	11	10	9	8	7	6
	18	17	16	15	14	13	12	11	10	9	8	7
	19	18	17	16	15	14	13	12	11	10	9	8
	20	19	18	17	16	15	14	13	12	11	10	9
	21	20	19	18	17	16	15	14	13	12	11	10
	22	21	20	19	18	17	16	15	14	13	12	11
	23	22	21	20	19	18	17	16	15	14	13	12
	24	23	22	21	20	19	18	17	16	15	14	13
	25	24	23	22	21	20	19	18	17	16	15	14
	26	25	24	23	22	21	20	19	18	17	16	15
	27	26	25	24	23	22	21	20	19	18	17	16
	28	27	26	25	24	23	22	21	20	19	18	17
	29	28	27	26	25	24	23	22	21	20	19	18
	30	29	28	27	26	25	24	23	22	21	20	19
	31	30	29	28	27	26	25	24	23	22	21	20
	32	31	30	29	28	27	26	25	24	23	22	21
	33	32	31	30	29	28	27	26	25	24	23	22
	34	33	32	31	30	29	28	27	26	25	24	23
	35	34	33	32	31	30	29	28	27	26	25	24
	36	35	34	33	32	31	30	29	28	27	26	25

I, Norman L. Ochs, in a field survey on December 5, 1993, do hereby certify that under requirements of P.A. 74, Michigan P.A. of 1970, the corner points mentioned in lines 1 and 2 above were in conformance with regulations and rules therefore as required in the current manual of survey instructions of the United States Department of the Interior, Bureau of Land Management or by a decree of a Court of Law and/or that the corner points mentioned in lines 3, 4 and 5 above were in conformance with the rules of the Michigan Board of Land Surveyors or by a Decree of a Court of Law; established, re-established, monumented, re-monumented, recovered, found as expressed below:

**NOTE: Not more than 4 corners, all in the same town and range, may be recorded on this certificate.**

N.W. Corner, Sec. 18, Troy Twp.

A. Description of original monument and accessories and/or subsequent restoration:  
GLO 1856 T. Whelpley Monument - Wood Stake

18" Sugar N23°E 34 lks #1

22" Sugar S82°E 34 lks #2

(RLS #503)

Lyle Shepherd's Witness Book

14" Sugar S21°W 147' #3

1968 George Blass #3489

Iron Pd.

10" Maple S38°E 36.26' #4

T. Pole S43°W 38.41' #5

T. Pole N5°W 133.32' #6

USFS Post N51°W 35.43' #7

NCRC Sheet 1/2" Bolt

Cor Post NW 38.7' #7

Cor Post NE 37.6' #8

B. Description of corner evidence found and/or method applied in restoring or reestablishing corner:

In 1969 Robert A. Griffin found iron that George Blass found in 1968. He replaced it with a 5" 36" conc. mon w/brass cap. He measured 2636.48 feet from the NW cor to the W-1/4 cor.7 and 2638. feet from the W-1/4 cor.7 to SW corner.7

N. L. Ochs in 1993 found R. A. Griffins monument w/brass cap in good condition.

Condition of recorded witnesses is: #1 thru #3 gone, #4 good, #5 & 6 gone, #7 good condition, #8 gone, #9 thru #12 good condition.

1969 Robert A. Griffin #13584  
Set 5" x 36" conc. mon w/brass cap  
4" Cherry N55°E 85.37' #9  
6" R. Pine S56°W 81.33' #10  
S.E. Cor. Conc. slab N80°W 171.74'  
14" Maple S84°E 105.82' #12  
LCRC #642

C. Description of monument for corner and accessories established to perpetuate locating the position of the corner:

Accepted R. A. Griffin's monument w/brass cap as a substantial marker for the Section corner and is accepted as a careful and faithful re-establishment of the position of the original corner.

✓ 8" Cherry N55°E 85.35' Spike in NW side of tree #9.

✓ 10" R. Pine S56°W 81.31' Spike in Easterly side of tree #10.

✓ SE Cor, conc. slab N80°W 171.74' #11.

✓ 14" Maple S84°E 105.82' Spike in South side of tree #12.

✓ Cor, Post NW 38.09' Spike in Northerly side of Post #7,

✓ 18" Maple S40°E 36.42' Spike in Westerly side of tree #4.

*Norman L. Ochs*

Signed by Norman L. Ochs  
Surveyor's Michigan License No. 22439

Date December 20, 1993



YES

LAND CORNER RECORDATION CERTIFICATE  
Filing Requirement of Act 74, Mich. P.A. 1970

For corners in

NEWAYGO (County)

Located In:

Corner Code #

16N 14W  
T R C-5

1. Public Land Survey

2. Property Controlling in Section

S

S

S

S

T R

T R

T R

T R

T R

T R

T R

T R

T R

T R

T R

T R

Register of Deeds Stamp & File Number

4. Lot No. \_\_\_\_\_, Recorded Plat \_\_\_\_\_

5. Private Claims \_\_\_\_\_

I, Norman L. Ochs, in a field survey on November 25, 1994, do hereby certify that under requirements of P.A. 74, Michigan P.A. of 1970, the corner points mentioned in lines 1 and 2 above were in conformance with regulations and rules therefore as required in the current manual of survey instructions of the United States Department of the Interior, Bureau of Land Management or by a decree of a Court of Law and/or that the corner points mentioned in lines 3, 4 and 5 above were in conformance with the rules of the Michigan Board of Land Surveyors or by a Decree of a Court of Law; established, re-established, monumented, re-monumented, recovered, found as expressed below:

**NOTE: Not more than 4 corners, all in the same town and range, may be recorded on this certificate.**

A. Description of original monument and accessories and/or subsequent restoration:

C-5 - Northwest corner, Section 17, T16N, R14W, Troy Twp., Newaygo Co., Mi.

G.L.O. Mullett & Brookfield 1837

24" Hemlock N23-1/4°W 26 Links (17.16') #1

10" Elm S36-1/2°W 9 Links (5.94') #2

8" Elm S26°E 41 Links (27.06') #3

Lyle S. Shepherd R.L.S. #503

Book 21, Page 92

6" Elm S40°E 6 Links (3.96') #4

Measured 79.60 Chains (5253.6') from the

N.W. cor. to the S.W. cor. of Sec. 17.

Lyle S. Shepherd R.L.S. #503

Witness book

Book unknown, Pg. 128

12" Elm S20°W 6 Links #5

10" B. Oak N2°W 6 Links #6

8" W. Oak N88°E 4 Links #7

(SEE OVER FOR CONTINUATION OF "A")

B. Description of corner evidence found and/or method applied in restoring or reestablishing corner:

C-5 - Northwest corner, Section 17, T16N, R14W, Troy Twp., Newaygo Co., Mi.

I recovered accessories #8 and #9 above. Corner falls in the Big South Branch of the Pere Marquette River. I also recovered the witness monument placed by R.A. Griffin in 1969. I also found a 1/2" re-bar East 123.10 feet set by Clinton E. Cole in 1979 (File No. 3316-79). Condition of the accessories are as follows: #1 Gone, #2 Gone, #3 Gone, #4 Gone, #5 Gone, #6 Gone, #7 Gone, #8 Found in good condition, #9 Found in good condition, #10 Gone.

Accessories #11 thru #14 are to the offset monument (70 feet North) and were all found in good condition.

C. Description of monument for corner and accessories established to perpetuate locating the position of the corner:

C-5 - Northwest corner, Section 17, T16N, R14W, Troy Twp., Newaygo Co., Mi.

I accepted the 5" x 60" U.S.F.S. Concrete Monument (offset 70 feet North on the Section line) as a substantial marker for an accessory to re-locate the position of the original corner.

WITNESSES ARE TO THE OFFSET MONUMENT:

P. Pole S59°E 70.18' (60d spike in S. side) #12

32" Cherry N75°W 36.66' (60d spike in N. side)

10" R. Pine N55°E 64.24' (60d spike in S.E. side)

14" Maple S30°E 161.01' (60d spike in E. side)

U.S.G.S. Monument N28°W 39.39' (#13)

E.1/4 Corner Section 7 - North 2619.50'

A	B	C	D	E	F	G	H	I	J	K	L	M
2	6	5	4	4	3	2	1					
3												
4	7	8	9	10	11	12						
5												
6	18	17	16	15	14	13						
7												
8	19	20	21	22	23	24						
9												
10	30	29	28	27	26	25						
11												
12	31	32	33	34	35	36						
13												

Signed by \_\_\_\_\_ Date \_\_\_\_\_

22439

Surveyor's Michigan License No. \_\_\_\_\_



CONTINUATION OF "A" - DESCRIPTION OF ORIGINAL MONUMENT AND ACCESSORIES AND/OR SUBSEQUENT RESTORATION:

N.C.R.C. SHEET (Undated)

30" Cherry N.W. 84.0' #8  
P. Pole N.E. 74.10' #9  
8" Elm S.E. 113.8' #10

George M. Blass, R.L.S. #5489 1968

Corner in river (location of corner computed from recovered N.C.R.C. witnesses).  
E.1/4 corner Section 7 is N01°39'20"W 2689.52'. S.1/4 corner Section 7 is S89°23'30"W 2633.24'.  
Measured 2641.44 feet from the N.W. corner to the W.1/4 corner of Section 17.

Robert A. Griffin, R.L.S. #13584 - July 9, 1969, L.C.R.C. #195

Found the following witnesses, P. Pole, Elm and Cherry, using the computed location (as determined by George Blass) for the Section corner. I located a point on the Section line between Sections 7 and 8. Said point is 70.00 feet North of the Section Corner. Set a 5" Square reinforced concrete post with a round 3" brass disk. This is the exact location of the point which is on the Section Line 70.00 feet North of the Section corner.

4" x 7' Pine Post North 1.2' #11  
P. Pole S66°E 69.96' #12

Center of U.S.G.S. Monument N36°W 39.36' #13

Center of Concrete Monument E. 1/4 corner Section 7 N01°39'20"W 2619.52'. Computed location of Southeast corner of Section 7 (in river) is S01°39'20"E 70.00 feet.

Clinton E. Cole, R.L.S. #17615 - 1979

Survey in S.W. 1/4, of Section 8 (File No. 3316-79) shows Section corner in river and offset monument 70.00 feet North on Section Line, and 1/2" capped iron 123.11 feet East on South Section Line.

Robert L. Wetherell, R.L.S. #24624, April 20, 1987

Corner in river, Concrete Monument N01°39'20"W 70.00 feet.

30" Cherry N.W. 84.0' #8

P. Pole N.E. 74.1' #9

8" Elm S.E. 113.8' #10

Recorded in Liber 346, Page 8089. Measured 2689.52 feet from the S.E. corner to the E.1/4 corner of Section 7. AND measured 2633.24 feet from the S.E. corner to the S.1/4 corner of Section 7. Measured 2726.87 feet from the N.W. corner to the N.1/4 corner of Section 17. Measured 2642.08 feet from the W.1/4 corner to the N.W. corner of Section 17.

Norman L. Ochs, R.L.S. #22439, May 1, 1992

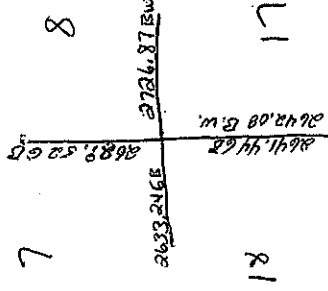
Corner in river. Concrete monument N01°39'20"W 70.00'.

30" Cherry N.W. 84.0' #8

P. Pole N.E. 74.1' #9

8" Elm S.E. 113.8' #10

Measured 2726.87 feet from the N.W. corner to the N.1/4 corner of Section 17.



Section 6 T 16 R 14

Information shown is from the 1984 survey by Leeman

This copy by

40.32

40

N 89-27-13 E  
2534.17

~~12404.26~~  
2631.97

N 89-17-51 E  
2657.24

~~12380.09~~  
97.52

71.88  
2534.17  
71.88  
2606.05

~~12405.14~~  
2703.44

2585.36

~~12426.94~~  
5289.61

NO-21-31E

5315.73

NO-08-38E

7.50

~~7089.51~~  
2670.18

~~7135.43~~  
3985.10

1312E

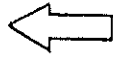
~~7181.35~~  
5300.02

1345.72

2631.44  
588-00-00.W

● Monument (Brass Capped)  
⊗ Iron or Conc. Monument

⊕ Unknown or Computed  
○



4473.81

Flu 7

2708.54  
51-33-24E

2624.65

50-04-16E

2631.45

50-10-39E







UNCOMMON  $\frac{1}{4}$  SECTION CORNERS

-QUESTION-

Are STANDARD  $\frac{1}{4}$  SECTION CORNERS and CLOSING  $\frac{1}{4}$  SECTION CORNERS on township lines always common in section's having common section corners?

-ANSWER-

Not always.

-PROBLEM

In a recent survey it was necessary for me to, Subdivide Section 6, T16N R14W, Newaygo County, Michigan.

It was therefore necessary to identify all available controlling G.L.O. corners and to make a boundary traverse of said section.

The problem area of the section was the township line ( also county line ) on the north side of Section 6 ( also the South side of Section 31, T17N R14W ).

-G.L.O. SURVEYS-

This township line was first surveyed by the 1838 G.L.O. survey. In 1856 the G.L.O. made a resurvey of this same line. This survey found the township corner but did not find the S $\frac{1}{4}$  Corner of Section 31, T17N R14W nor did they find the SE Corner of Section 31. At these lost corners they reestablished new corners. An 1857 G.L.O. retracement survey in T16N R14W found the 1856 corner common to Section 31 & 32 ( standard corner ) T17N R14W to also be the corner of Section 5 & 6 T16N R14W ( closing corner ).

( Township corner )

On April 30, 1971 I found the stump of the witnesses trees to the township corner marked by the 1856 G.L.O. survey. From these witnesses I recovered and monumented the township corner. On Aug 23, 1984 I found this monument to be undisturbed.

( ¼ Section Corner )

The only record of the S¼ corner of Section 31 ever having been used prior to 1967 is an undated survey by George H. Johnson, who was Lake County Surveyor from about 1915 to about 1925.

It appears the Johnson recovered the location of this corner from what the he presumed to be the stump of an 1838 G.L.O. witness tree. On June 7, 1967 I found and remonumented the Johnson corner. This corner was used in 1980 by Clinton Cole, to make a survey in Section 31, T17N R14W. On Aug 23, 1984 I found this monument to be undisturbed.

( Section Corner )

The only record of the SE corner of Section 31 ever having been used since the G.L.O. survey is a survey made by a C.C.C. road surveyor in 1937. The road intersection is shown to be the section corner but no reference was made to the type of section corner monument found.

On May 19, 1967 I found a Narrow Gauge Railroad Rail Splice Plate at the intersection of the roads. At that time I replaced the Splice Plate with a brass capped concrete monument. This corner monument was used to make a survey in Section 31, T17N R14W in 1980 by Clinton Cole. On Aug 23, 1984 I found this monument to be undisturbed.

-SURVEY-

On Aug 23, 1984 this township line was surveyed by Patrick Leemon and Anne Avery ( under my direct supervision ) using a Wild T2 theodolite and an E.D.M. ( DMS 2 ). We found the S¼ Corner of Section 31 to be N 89°27'13" E a distance of 2534.17 feet from the SW Corner of Section 31 ( twp Cor ). We found the SE Corner of Section 31 to be N 89°17'51" E a distance of 2657.24 feet from this S¼ Corner.

The problem arises when you compare the G.L.O. plats for T16N R14W and T17N R14W for this same mile of township line. The T17N R14W plat distance is 40.00 chains to the  $\frac{1}{4}$  corner, then 38.50 chains to the township corner for a total of 78.50 chains ( 5181.00 feet ). The T16N R14W plat distance is 40.00 chains to the  $\frac{1}{4}$  corner then 40.32 chains to the township corner for a total of 80.32 chains (5301.12 feet ). The fact that these two distance are dissimilar by 1.82 chains ( 120.12 feet ) and that the only corner found by the 1856 survey was the township corner, we can conclude that the  $N\frac{1}{4}$  Corner of Section 6 was not in the same location as the  $S\frac{1}{4}$  Corner of Section 31. This is confirmed by the acreage of the fractional " 40's " adjacent to the township corner on the common township line.

To establishing the missing  $N\frac{1}{4}$  Corner of Section 6 it is necessary to establish it at a location which is compatible with the 1856 and 1857 G.L.O. survey of Section 6 and with the acreages of the Fractional " 40's " on the North line of Section 6 as shown on the G.L.O. Plats of T16N R14W. I established the  $N\frac{1}{4}$  Section corner of Section 6 ( closing corner ) on the township line at proportional distance between the NE corner and NW corner of Section 6.

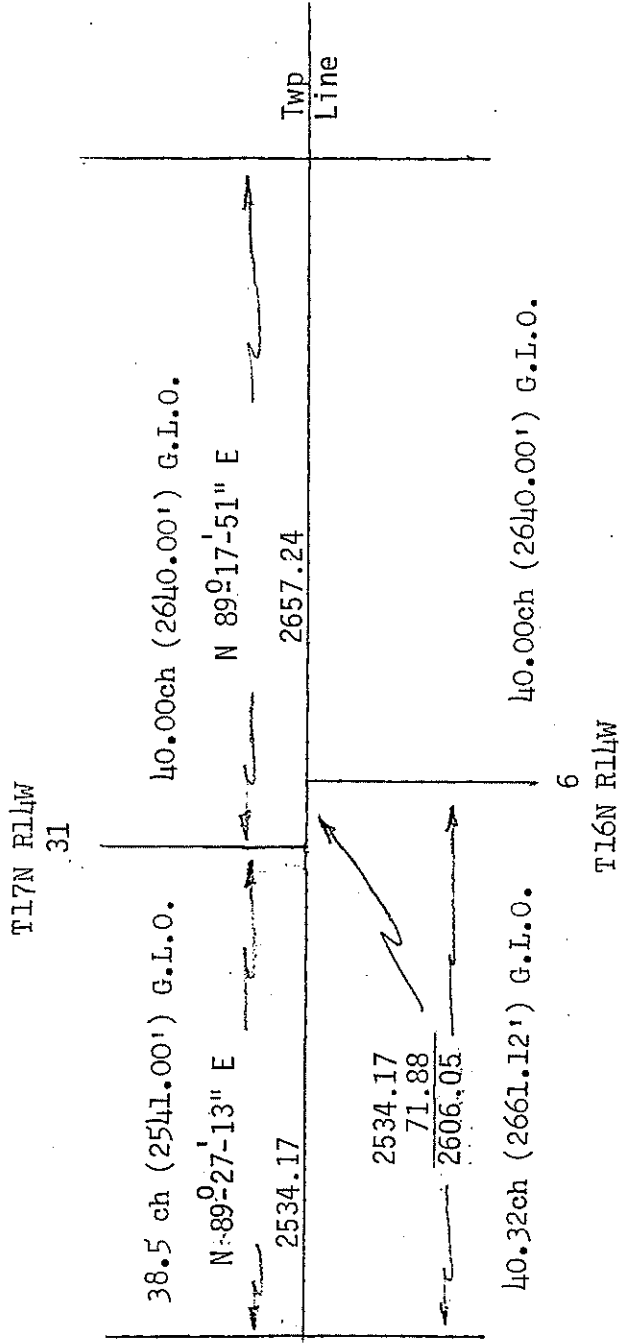
This location is compatible with the 1856 and 1857 G.L.O. notes and plat, but is

N 89°27'13" E a distance of 1.089 chains ( 71.88 feet ) from the  $S\frac{1}{4}$  corner Section 31 ( standard  $\frac{1}{4}$  corner ) T16N R14W.



- CONCLUSION -

The principle used in this situation is that the G.L.O. Plat for T17N R14W is applicable to surveys in T17N R14W only, and the G.L.O. Plat for T16N R14W is applicable to surveys in T16N R14W only.





7 16 14 W

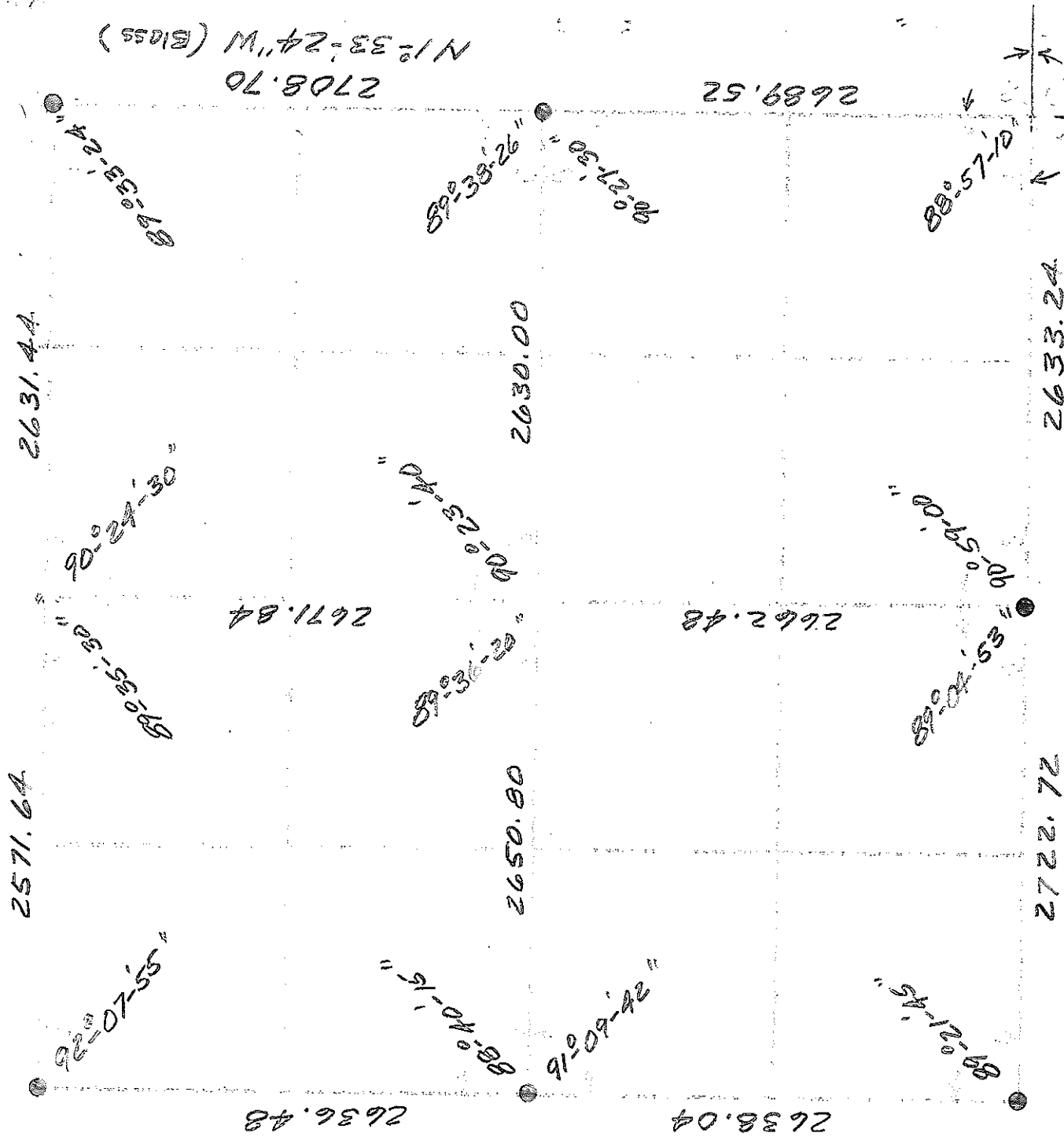
1969

G. Bloss

PLS

(70° Temp)

R. Griffiths (Computed by RAG)



Scale of 1 inch = 100 feet







# CERTIFICATE OF SURVEY

I hereby certify that I have surveyed and mapped the following described parcels of land in accordance with Act 132, P.A. 1970. And that the error in the relative position of points established does not exceed one part in 5000 or 0.15 ft. where the total length of traverse is not greater than 750 ft.

SEE SHEETS 2 AND 3 FOR DESCRIPTIONS.

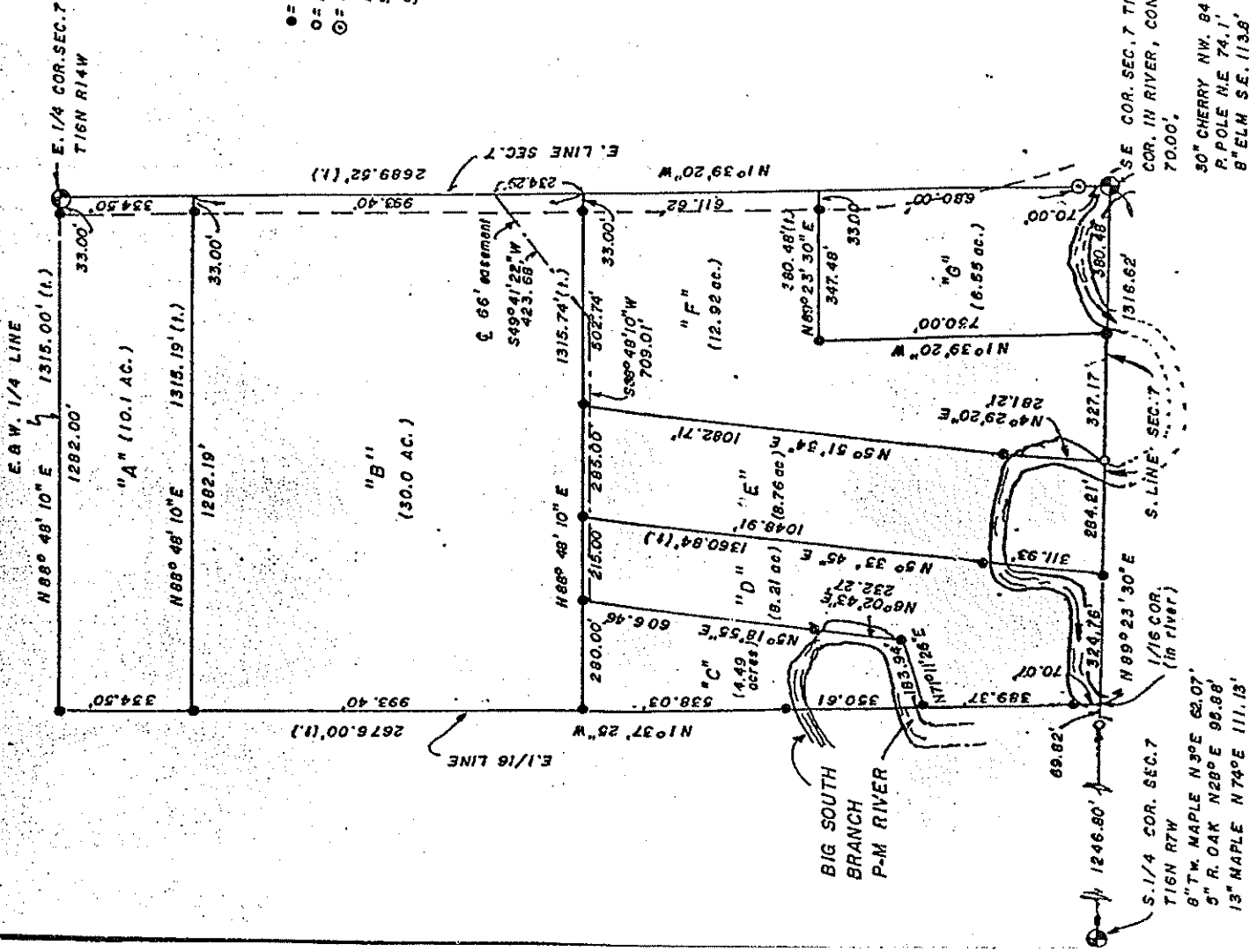
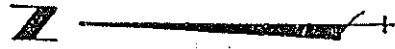
NEWAYGO COUNTY  
REGISTER OF DEEDS  
MARLENE TOOGOOD

1988 MAY 19 PM 4:04

*Marlene Toogood*

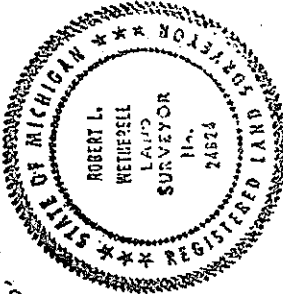
### LEGEND

- = 1/2" capped iron set
  - = 1/2" iron found
  - ⊙ = U.S.F.S. conc. mon. found
- Bearing datum from previous sec. survey  
SCALE 1" = 400'



SE COR. SEC. 7 T16N R14W,  
COR. IN RIVER, CONC. MON. N1°39'20"W  
70.00'

30" CHERRY NW. 84.0'  
P. POLE NE 74.1'  
8" ELM SE. 113.8'



*Robert L. Wetherell*

ROBERT L. WETHERELL L.S. 24624  
APRIL 20, 1987

SURVEYED BY: ROBERT L. WETHERELL RT. 1 BOX 1763 BALDWIN MI. 49304	SURVEYED FOR: NORTH WEST REALTY BALDWIN MI. 49304
--	---





