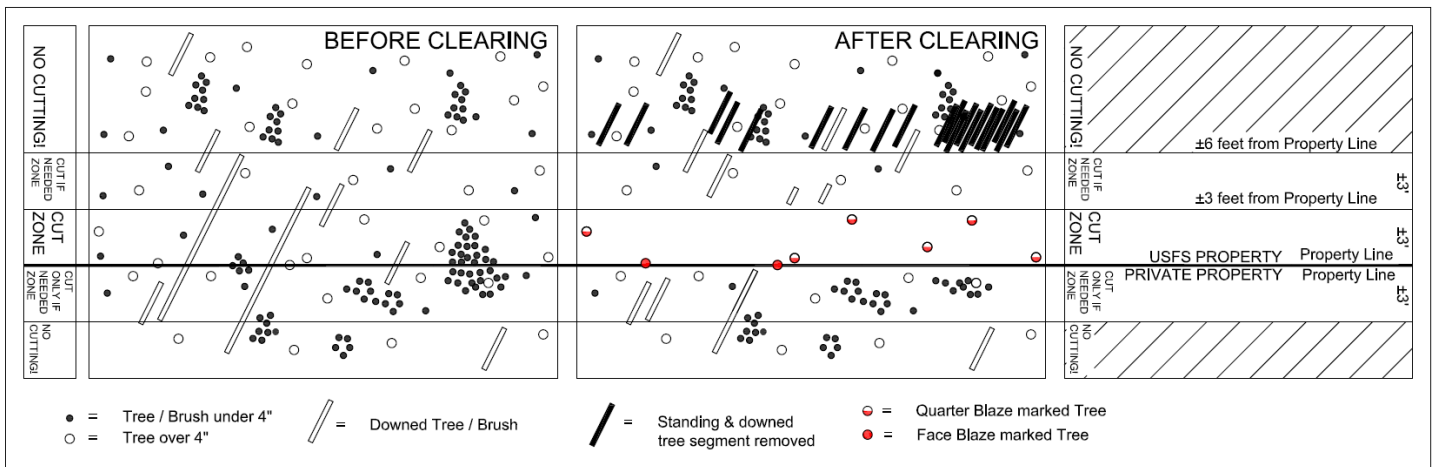


Clearing Property Line [USFS section 3147.1]

- The property line will be cleared of small trees, brush, and debris to allow easy foot travel, unless the line is defined by a feature such as a hedge.
- In an effort to preserve necessary homes for various wildlife, please refrain from cutting standing dead trees when clearing National Forest property lines unless they pose a safety hazard.
- Trees over 6 inches in diameter shall not be cut along property lines, unless otherwise discussed with and approved by the COR.
- All cutting debris shall be placed on the government side of the line. Trees should not be left leaning above ground onto other trees.
- If a chainsaw is used for line clearing, the following personal protective equipment (PPE) is required for the operator: Forest Service approved hardhat (ANSI Z89.1-1997, Type1, Class E), eye protection, hearing protection (85 dB and above), appropriate gloves (cut-resistant for chain filing), long sleeved shirt, chainsaw chaps that meet the requirements of FS Spec 6170-4, heavy duty, cut resistant or leather 8" high laced boots with nonskid soles.
 - A worker should not operate a chainsaw when working alone.



Clearing – brush & trees



Clearing – downed trees



Face & Quarter Blazes Marked

Blazing and Painting Property Line [USFS section 3147.3]

- Posting the property line shall include blazing all trees (over 4 in. dia.) on National Forest lands within arm's reach ($\pm 3'$) of the property line with two blazes at chest height and 120° apart.
- Trees that fall on the line (line trees) shall be blazed on both sides of the tree with hack marks placed 2 inches above and below the blaze. (See Exhibit illustrations).
- If a situation is encountered where many closely spaced trees falls within arm's reach of the property line, then trees may be blazed at ± 30 foot intervals.
- The only acceptable tool for blazing is a sharp long handled axe. New blazes should be a minimum 2 inches wide by 6 inches long and through the wood cambium.
- Old blazes along the property line shall not be reopened, just repainted.
- Trees located on private lands will not be marked but may be repainted if previously blazed. See Exhibit for blazing specifications.
- Durable, long lasting, oil-based enamel paint, bright red in color, but not florescent, specifically designed for forested boundary marking, shall be applied to all blazes, new and old, on trees used to mark the property line and bearing tree blazes and bands. Oil-based paint is to be applied in sufficient quantity to completely cover the entire surface of the blaze and $\frac{1}{2}$ " to 1 inch of the bark. All use of oil-based paint shall be in accordance with the manufacturer's material safety data sheet.

USE OF FACE AND QUARTER BLAZES

