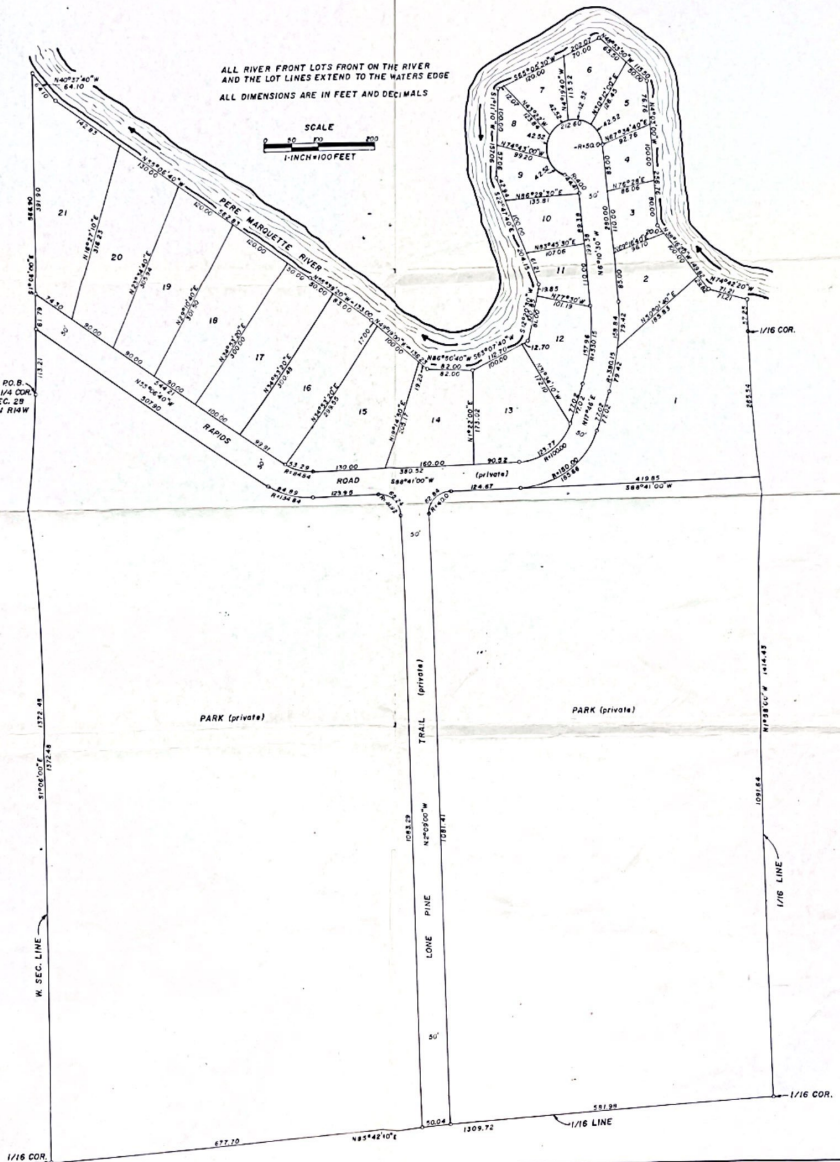


# MARQUETTE ESTATES

NW 1/4 - SW 1/4 AND  
PART OF THE SW 1/4 - NW 1/4  
SEC. 28 T18N R14W SWEETWATER TWP  
LAKE CO., MICH.

SHEET 2 OF 2 SHEETS

ALL RIVER FRONT LOTS FRONT ON THE RIVER  
AND THE LOT LINES EXTEND TO THE WATER'S EDGE  
ALL DIMENSIONS ARE IN FEET AND DECIMALS



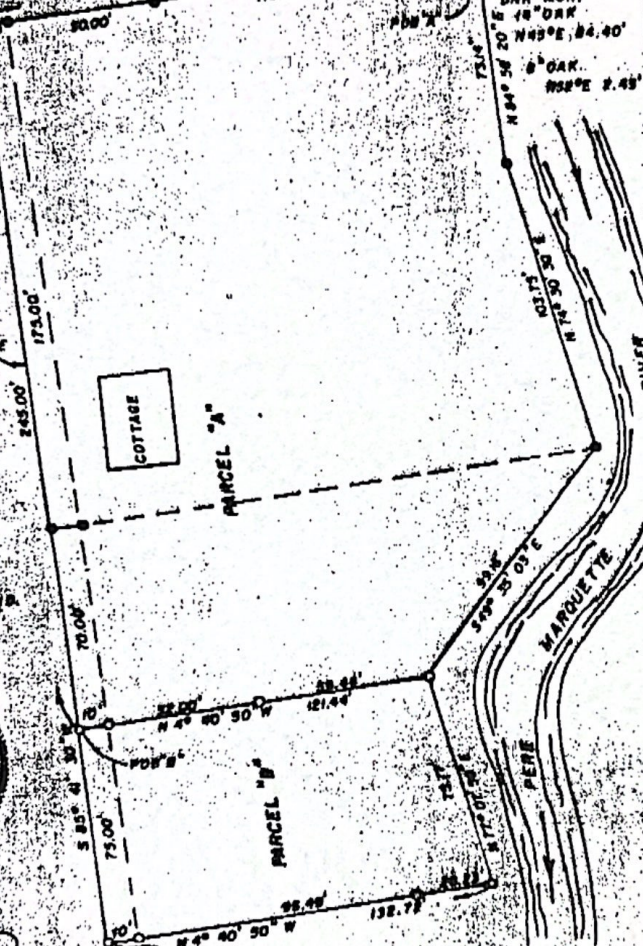
LIBER 02 PAGE 61

# Certificate of Survey

11 22 AM '77

PORT NE 1/4 - SE 1/4 -  
SEC. 20 T10N R14W  
SWEETWATER TWP  
LAKE CO. MICH.

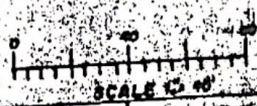
E. SEC. LINE  
N 4° 40' 50" W  
110.18  
REGISTER OF DEEDS  
S.E. COR. SEC. 20  
DNR MON.  
18" DNR  
N 45° E 84.40'  
8" OAK.  
N 52° E 7.43'



**LEGEND**  
• SURVEY MARKERS FOUND  
○ SURVEY MARKERS SET



*John P. Pierson*  
JOHN P. PIERSON, R.L.R. 19309  
JULY 19, 1977

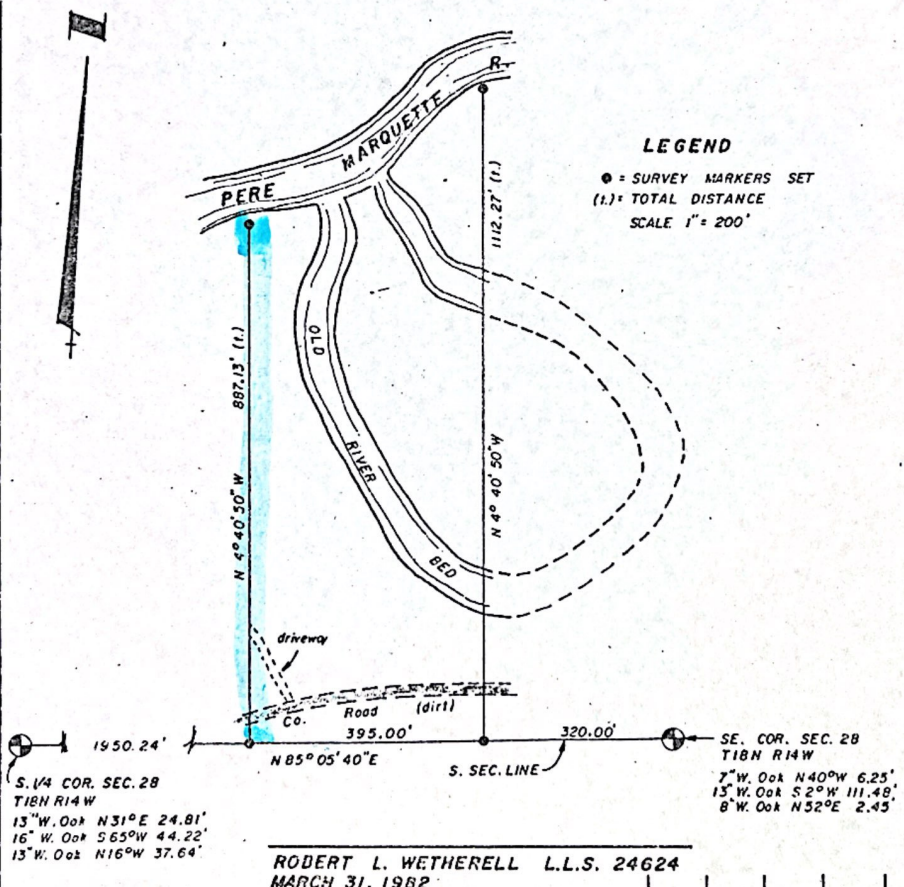


SURVEYED BY LARRY STATE SUR. & ENG. 280 MICHIGAN AVE BALDWIN, MICHIGAN 48304	SURVEYED FOR LEON KOWALSKI BALDWIN MICH. LIBER 02 PAGE 61	FIELD: C.E.C.	COMP: C.E.C.
		DRAW: R.L.R.	CHKD: J.E.P.
		SHEET 1 OF 2 SHEETS	
		FILE NO. 2870-77	

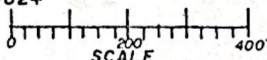
# Certificate of Survey

I hereby certify that I have surveyed and mapped the following described parcel (s) of land in accordance with Act 132, P.A. 1970. And that the error in the relative position of points established does not exceed one part in 5,000' or 0.15 ft. where the total length of traverse is not greater than 750 ft.

The West 395' of the East 715' of that part of S. 1/2 - SE. 1/4 Sec. 28, T18N R14W, lying S. of P.M. River, Lake Co., Mi.



ROBERT L. WETHERELL L.L.S. 24624  
 MARCH 31, 1982



SURVEYED BY:  
 LAKESTATE SUR. & ENG.  
 760 MICHIGAN AVE.  
 BALDWIN, MICHIGAN  
 49304

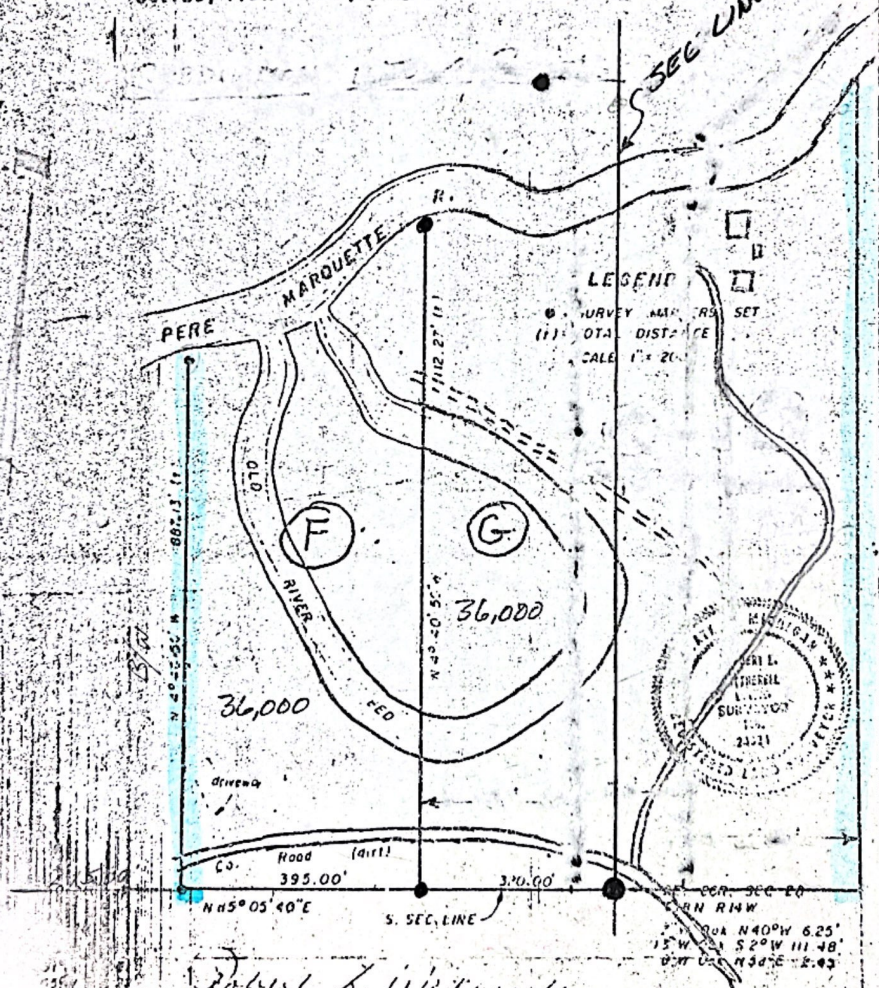
SURVEYED FOR:  
 RICHARD DEGRAAF  
 2215 DE LANGE S.E.  
 GRAND RAPIDS MI.  
 49506

FIELD: C.C., R.L.W.	COMP:
DRWG: R.L.W.	CHKD:
SHEET 1 OF 1 SHEET(S)	
FILE NO. 3810 - 82	

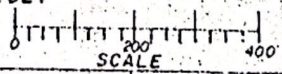
# Certificate of Survey

I hereby certify that I have surveyed and mapped the following described parcel (s) of land in accordance with Act 132, P.A. 1970. And that the error in the relative position of points established does not exceed one part in 5,000' or 0.15 ft. where the total length of traverse is not greater than 750 ft.

The West 395' of the East 715' of that part of S. 1/2 - SE. 1/4 Sec. 28, T18N R14W, lying S. of P.M. River, Lake Co., Mi.



*Robert L. Wetherell*  
**ROBERT L. WETHERELL L.L.S. 24624**  
**MARCH 31, 1982**



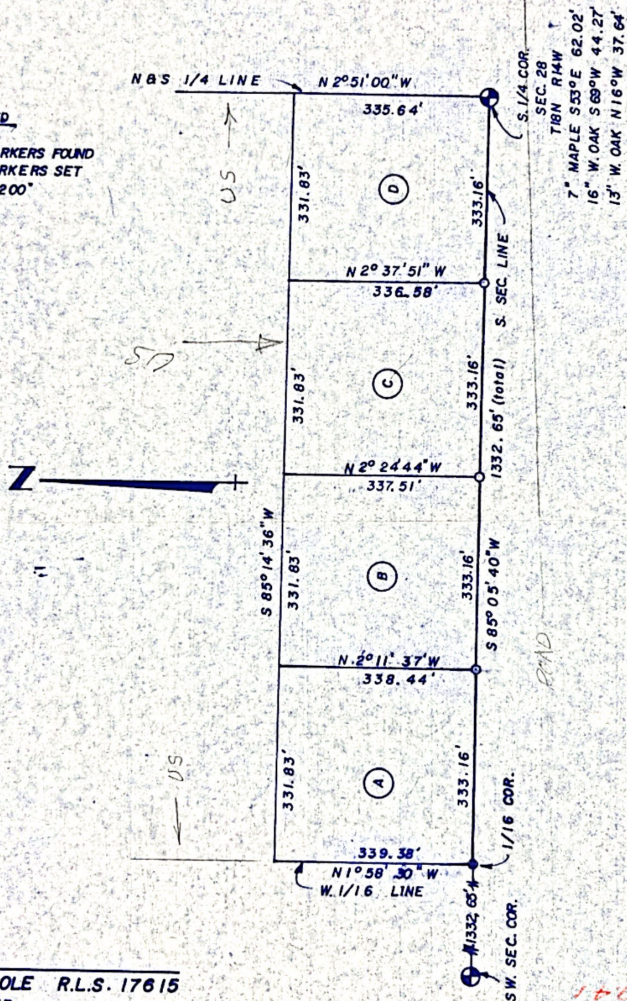
**SURVEYED FOR:**  
**RICHARD DEGHAAF**  
**2215 DE LANGE S.E.**  
**GRAND RAPIDS MI.**  
**49506**

FIELD: C.C., R.H. COMP:
DRWG: A.L.W. CHKD:
SHEET 1 OF 1 SHEET(S)
FILE NO 3810-82

I hereby certify that I have surveyed and mapped the following described parcel (s) of land in accordance with Act 132, P.A. 1970. And that the ratio of closure of the unadjusted field traverse was 1 ft. in 5000.

S. LINE OF S. 1/2, S. 1/2, SE. 1/4, SW. 1/4, SEC. 28, T18N R14W, SWEETWATER TWP, LAKE CO., MICH.

**LEGEND**  
 ● SURVEY MARKERS FOUND  
 ○ SURVEY MARKERS SET  
 SCALE 1" = 200'



CLINTON E. COLE R.L.S. 17615  
 SEPT. 7, 1973

SURVEYED BY:  
 LAKESTATE SUR. & ENG.  
 760 MICHIGAN AVE.  
 BALDWIN, MICHIGAN  
 49304

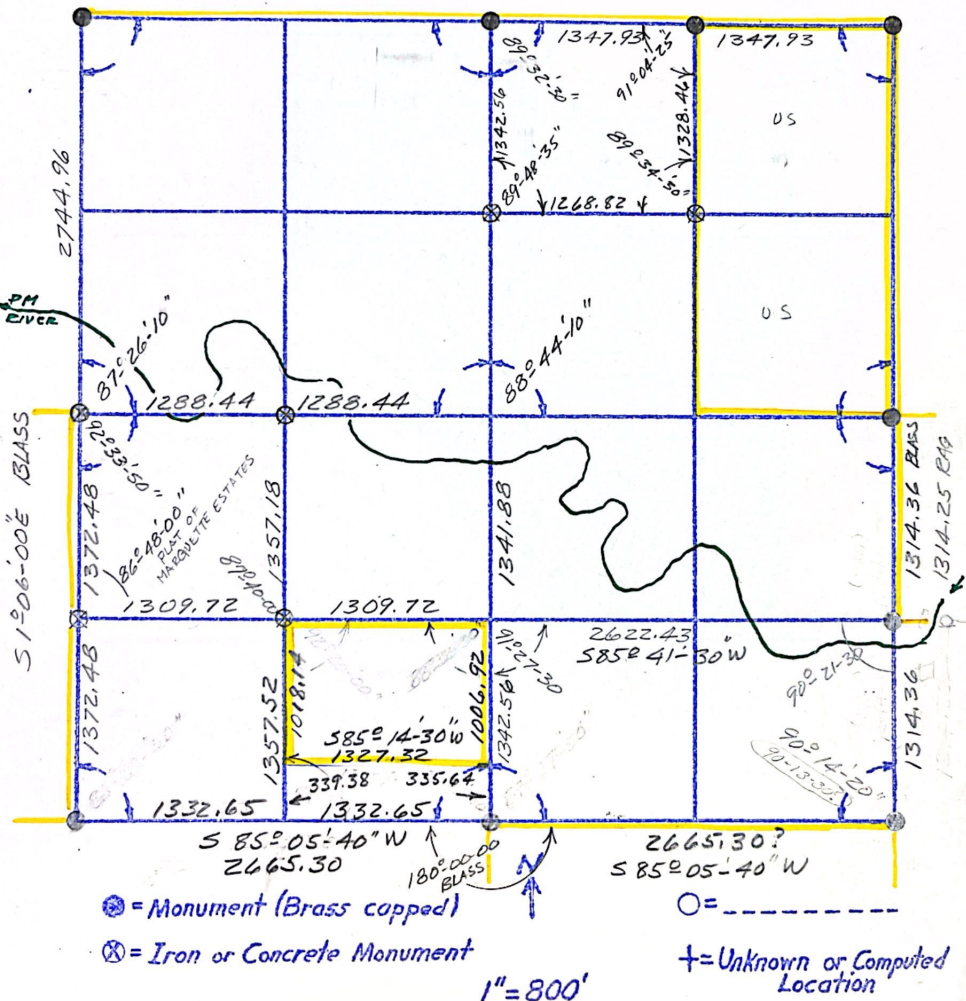
SURVEYED FOR:  
 D. FARMER, ETAL  
 BALDWIN MICHIGAN  
 49304

SHEET 1 OF 2 SHEET(S)

FILE NO. 2060-73

Section 28 T18 N R14

Information shown is from the 1964 Survey made by Blass  
 "Marquette Estates" This copy by Expanded by R.A. Griffin



**LAND CORNER RECORDATION CERTIFICATE**  
**Filing Requirement of Act 74, Mich. P.A. 1970**

For corners in

<u>          </u> Lake (County)	Located In:	Corner Code #
	T <u>18N</u> R <u>14W</u>	<u>F-11</u>
	T <u>      </u> R <u>      </u>	<u>      </u>
	T <u>      </u> R <u>      </u>	<u>      </u>
2. Property Controlling in Section	S <u>      </u> T <u>      </u> R <u>      </u>	<u>      </u>
3. Miscellaneous Property in Sec.	S <u>      </u> T <u>      </u> R <u>      </u>	<u>      </u>
	S <u>      </u> T <u>      </u> R <u>      </u>	<u>      </u>
4. Lot No. <u>      </u> , Recorded Plat <u>      </u>		
5. Private Claims <u>      </u>		

**Register of Deeds Stamp & File Number**

1	A	B	C	D	E	F	G	H	I	J	K	L	M
2	6		5		4		3		2		1		
3													
4	7		6		9		10		11		12		
5													
6	15		17		16		15		14		13		
7													
8	19		20		21		22		23		24		
9													
10	30		29		28		27		26		25		
11													
12	31		32		33		34		35		36		
13													

I, Robert F. Mitchell, in a field survey on May 13, 2009 do hereby state that under requirements of P.A. 74, Michigan P.A. of 1970, the corner points mentioned in lines 1 and 2 above were in conformance with regulations and rules therefore as required in the current manual of survey instructions of the United States Department of the Interior, Bureau of Land Management or by a decree of a Court of Law and /or that the corner points mentioned in lines 3, 4 and 5 above were in conformance with the rules of the Michigan Board of Land Surveyors or by a Decree of a Court of Law, established, re-established, monumented, recovered, found as expressed below:

**NOTE: Not more than 2 corners, all in the same town and range, may be recorded on this certificate.**

**A. Description of original monument and accessories and/or subsequent restoration:**

**F-11; One-quarter Corner common to Sections 28 and 33, T18N, R14W.**  
 See Remon LCRC as recorded in Liber 5, page 234 of the land corners of Lake County for history from GLO to 2003.

**B. Description of corner evidence found and/or method applied in restoring or reestablishing corner:**

**F-11; One-quarter Corner common to Sections 28 and 33, T18N, R14W**  
 Found the concrete monument with brass cap as recorded in LCRC referenced in section "A" above. The REMON position was not accepted by this surveyor for the following reasons. In 1919 County Surveyor G. Johnson did a complete break of Section 33 for all the land owners (petition survey) and the notes from the survey are on file in the county surveyor records. We recovered most of Johnsons section sub-divisional corners in the West one-half of the section and they are heavily occupied (very old fences dating back to the Johnson Survey) and the private land owners have accepted the Johnson Survey. Based on the location of the sub-divisional corners, the location of the 1919 Johnson Northeast Corner of 33 (see RFM LCRC) and the fact that Blass set his position in 1952 SP to US and did not recover any GLO evidence, I accept the 1 1/4" iron pipe (called out as Witnesses #10 in the Remon certificate) as established or found (records do not disclose) by County Surveyor Johnson in 1919. The position is 7.18' North and 1.06' west of midway and on line between the current Northwest Corner of Section 33 of record and the recovered Northeast corner of Section 33 as per the Johnson Survey of 1919. In addition the two witnesses as called for in the 1919 survey by Johnson were recovered and checked with the found iron. The Johnson 1 1/4" iron pipe from the 1919 survey is accepted as a careful and faithful PERPETUATION of the position of the original GLO corner.

**C. Description of monument for corner and accessories established to perpetuate locating the position of the corner:**

**F-11; One-quarter Corner common to Sections 28 and 33, T18N, R14W**

1 1/4" iron pipe		
N 37° E	18" Black Oak	28.25' (Johnson 1919) remon wit #5
S 19° E	24" Black Oak	32.25' (Johnson 1919) remon wit #4
N 46° W	14" Black Oak	30.20'
N 30°48'23" E	5" Conc. Monument with Brass Cap	325.11' (Blass 1952, REMON 2003)



Signed by *Robert F. Mitchell*

Date May 13, 2009

Surveyor's Michigan License No. 28417

FORM APPROVED BY MICHIGAN STATE BOARD OF PROFESSIONAL SURVEYORS, JAN. 28, 1971  
 REVISED MAY 14, 1975  
 REVISED JAN., 1983  
 REVISED OCT., 1995

**LAND CORNER RECORDATION CERTIFICATE**  
Filing Requirement of Act 74, Mich. P.A. 1970

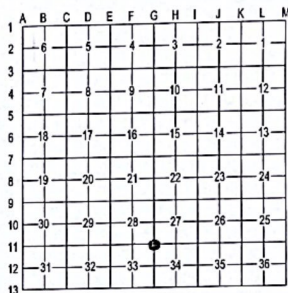
For corners in

Lake (County)	Located in:	Corner Code #
1. Public Land Survey	T <u>18</u> N R <u>14</u> W	<u>G-11</u>
	T _____ R _____	_____
	T _____ R _____	_____
	T _____ R _____	_____
2. Property Controlling in Section	S _____ T _____ R _____	_____
3. Miscellaneous Property in Sec.	S _____ T _____ R _____	_____
4. Lot No. _____, Recorded Plat _____		
5. Private Claims _____		

Register of Deeds Stamp & File Number

I, Robert F. Mitchell, in a field survey on April 16th, 2009 do hereby state that under requirements of P.A. 74, Michigan P.A. of 1970, the corner points mentioned in lines 1 and 2 above were in conformance with regulations and rules therefore as required in the current manual of survey instructions of the United States Department of the Interior, Bureau of Land Management or by a decree of a Court of Law and for that the corner points mentioned in lines 3, 4 and 5 above were in conformance with the rules of the Michigan Board of Land Surveyors or by a Decree of a Court of Law, established, re-established, monumented, recovered, found as expressed below:

**NOTE:** Not more than 2 corners, all in the same town and range, may be recorded on this certificate.



**A. Description of original monument and accessories and/or subsequent restoration:**  
G-11; Section Corner Common to Sections 27, 28, 33 and 34, Town 18 North, Range 14 West.  
See remon LCRC as recorded in Liber 4, page 0258 of the land corner records of Lake County for history from GLO to 2000.

**B. Description of corner evidence found and/or method applied in restoring or reestablishing corner:**  
G-11; Section Corner Common to Sections 27, 28, 33 and 34, Town 18 North, Range 14 West.  
Found Concrete monument as recorded in the remon LCRC as stated in Section "A" above. This Surveyor does not accept the Remon position for the following reasons. County Surveyor G. Johnson did a complete break and monumentation of Section 33 in 1919. We recovered the Johnson monumentation at section sub divisional corners from his 1919 complete section survey in the West half of the section. The corners were heavily occupied (old occupation that dates to the Johnson survey) and have been accepted by the land owners. In addition we located the Johnson North One-quarter corner of 33 and both 1919 witnesses. The North One-quarter corner of 33 as set by Johnson in 1919 was rejected by Remon, however accepted by me as the division of 33 as monumented agrees with the Johnson corner (see RFM LCRC). Based on the Johnson monumentation of the west one-half of the section we searched approximately 640.00 feet South of the currently monumented corner at the Northeast Corner of Section 33 and recovered a 1" pinched top iron pipe in a stump hole (same top of pipe that was recovered at the Sectional subdivision corners in the west half of the section) and remains of both pine stump witnesses from the 1919 Johnson survey. It should be noted that at the current Remon position no witnesses for the Johnson Surveys have been recovered with the exception of witness # 6 (Remon) a large stone that does not agree with the Johnson record. In addition the Remon corner is near a 30" pine stump that according to Blass (1952) corresponds to the Governments notes. The GLO notes call for a 20" and the existing stump is too large to be the GLO corner tree. In 1952 Blass also stated that the distance to the river to the North is also compatible with the Government Notes. There is a large oxbow in the river to the North and the GLO plat does not really depict the river correctly. The South end of the oxbow in the river fits the GLO call from the Johnson recovered corner within 100'. Based on an aerial photo, the three river calls to the East by GLO do not come even close to agreeing with either position. It is obvious that the GLO survey has a 10 chain bust North and South and I believe that it is probably in the South Half of the Mile between Section 27 and 28. I Accepted the Johnson 1919 position of record as a careful and faithful perpetuation of the GLO corner location according to his 1919 notes on file in the county surveyor records.

**C. Description of monument for corner and accessories established to perpetuate locating the position of the corner:**  
G-11; Section Corner Common to Sections 27, 28, 33 and 34, Town 18 North, Range 14 West.

1" pinched top pipe in stump hole		
S 43 ° E	6" B. Oak	32.90'
N 73 ° W	8" Maple	44.92'
East	Posted USFS Boundary	10'
S 81 ° W	Pine stump remains	27.0' (Johnson 1919, remon wit # 1)
S 35 ° E	Pine stump remains	27.0' (Johnson 1919, remon wit #2)
N 03°41'12" E	Conc. Mon.	636.13' (remon 2000)

Signed by [Signature]  
Surveyor's Michigan License No. 28417

Date 5/13/09

