

MAP OF
SECTION 19, T25N, R8E
 ALCONA COUNTY
 FOR
 FORESTRY DIVISION
 DEPARTMENT OF CONSERVATION
 1960

MINUTES OF SURVEY
 Section 19, T 25 N, R 8 E
 Alcona County
 April, 1960

The purpose of this section subdivision was to determine and mark the boundary of the State-owned lands situate in Section 19, T 25 N, R 8 E.

Prior to the subdivision of this Section it was necessary to locate or restore all the Section and quarter section corners.

Concrete monuments with brass tablets as placed by the U. S. General Land Office Resurvey of T 25 N, R 7 E were found to mark the NW, the SW, and the W 1/4 corner of Section 19. Other corners of this Section were identified or restored as follows:

NE corner - The intersection of fences north, south, and west, and the centerline of township road east was accepted as the best available evidence of the corner.

SE corner - Found an old stake, and very old stake bottom at corner, in line with centerline of township road east. This probably perpetuates corner as found and restored by E. Chapelle, Sr. in 1903, in a survey for County road. Checks acceptably with stream east and was considered best evidence of proper location of corner.

The N 1/4 corner, the S 1/4 corner, and the E 1/4 corner were restored by proportionate measurement since no definite evidence of the original corner could be located.

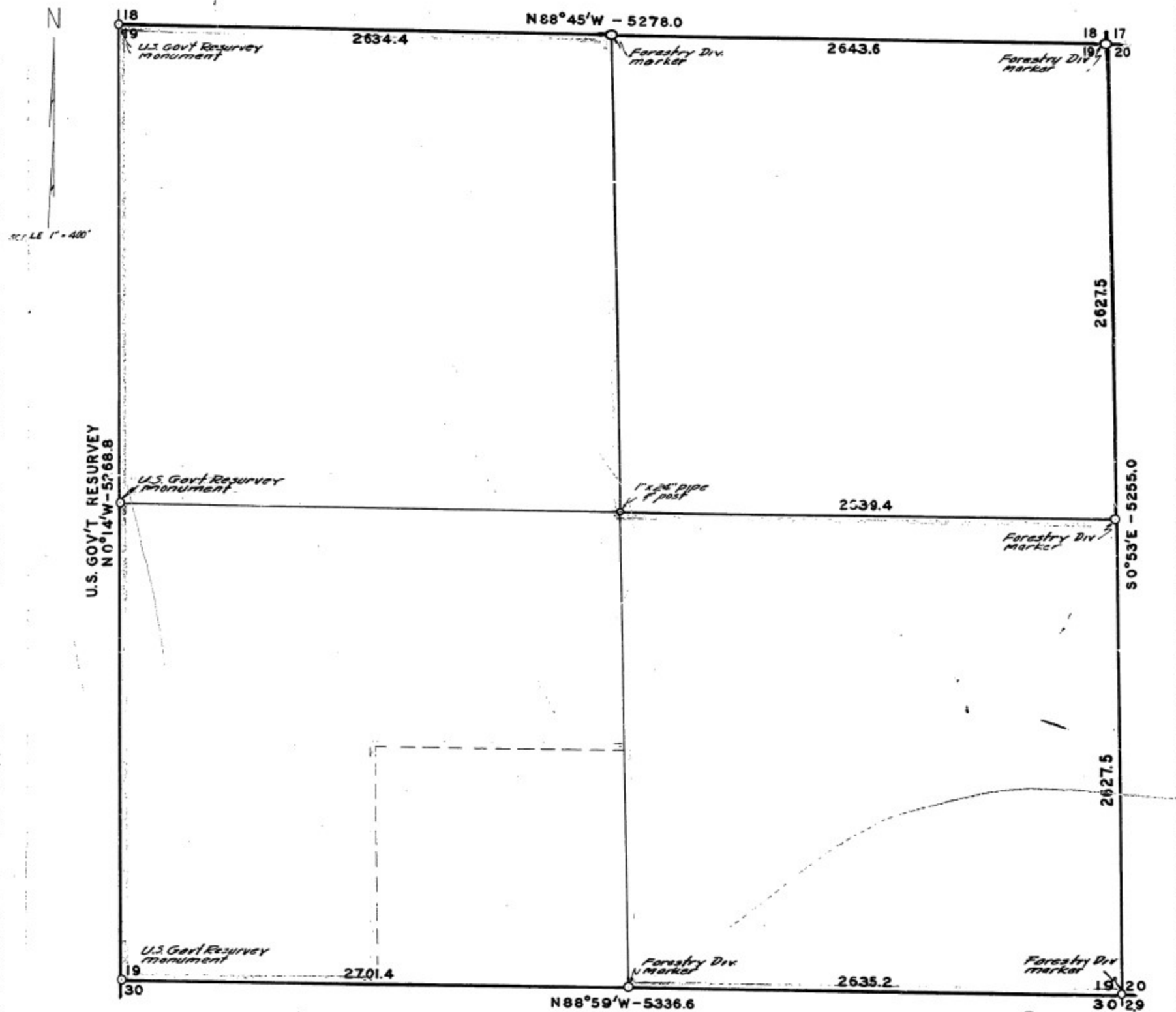
After restoration of the necessary corners, the E - W 1/4 line was run and the center of the Section established at the calculated intersection of the true 1/4 lines.

All bearings as shown on the map delineated hereon are true bearings, referred to the U. S. Government Resurvey record for the West line of Section 19.

All measurements are in feet and decimals thereof.

This survey was made and map prepared by

Kenneth J. Ostling
 Kenneth J. Ostling, Registered Land
 Surveyor 1966B
 Forestry Division
 Department of Conservation



PLAN No. R-1-H