

SURVEY MAP T.32N.,R.4E. Sec 6 Montmorency County

Survey Report

PURPOSE: THIS REFRACTION AND BOUNDARY SURVEY WAS EXECUTED FOR THE PURPOSE OF DELINEATING THE BOUNDARY OF CERTAIN STATE-OWNED LANDS FOR USE BY FOREST MANAGEMENT DIVISION IN THE PROPER ADMINISTRATION OF SAID LANDS.

CONTROLLING CORNERS: DESCRIPTION OF CORNERS AS NOTED ON ADJOINING SURVEY MAP WITH COMPLETE CORNER DESCRIPTIONS, MONUMENTS, MEASUREMENTS AND REGISTER OF DEEDS OFFICE, AS FILED AT THE MONTMORENCY COUNTY APPROPRIATE DEPARTMENT OFFICES.

SURVEY NOTES: BEARING BASIS FOR THIS SURVEY IS FROM A PREVIOUS DEPARTMENT OF NATURAL RESOURCES SURVEY PROJECT PM-1-92. COMPUTED BEARING OF 1997. THE WEST LINE OF SECTION SIX HAS A RECORDED BEARING OF N01°28'08"W.

TRAVERSE WORK UTILIZED A ZEISS ELTA-3 TOTAL STATION. RATIO OF CLOSURE FOR UNACQUIRED FIELD TRAVERSE IN SECTION 6 WAS BETTER THAN 1:5000 FOR THE PRIMARY TRAVERSE.

UNLESS OTHERWISE NOTED, DNR MONUMENTS CONSIST OF A FOUR-INCH ALUMINUM CAP ON A 1" GALVANIZED IRON PIPE.

CERTIFICATION: I HEREBY CERTIFY THAT THE MAP DELINEATED HEREON IS A TRUE REPRESENTATION OF THE SURVEY AND THE MEASUREMENTS MADE ARE AS SHOWN HEREON.

Carl T. Kiskila

CARL T. KISKILA, P.S. #33981

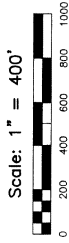


Legend

Location of roads, trails, rivers, etc. are approximate only from aerial photos, quadrangle maps and field ties.

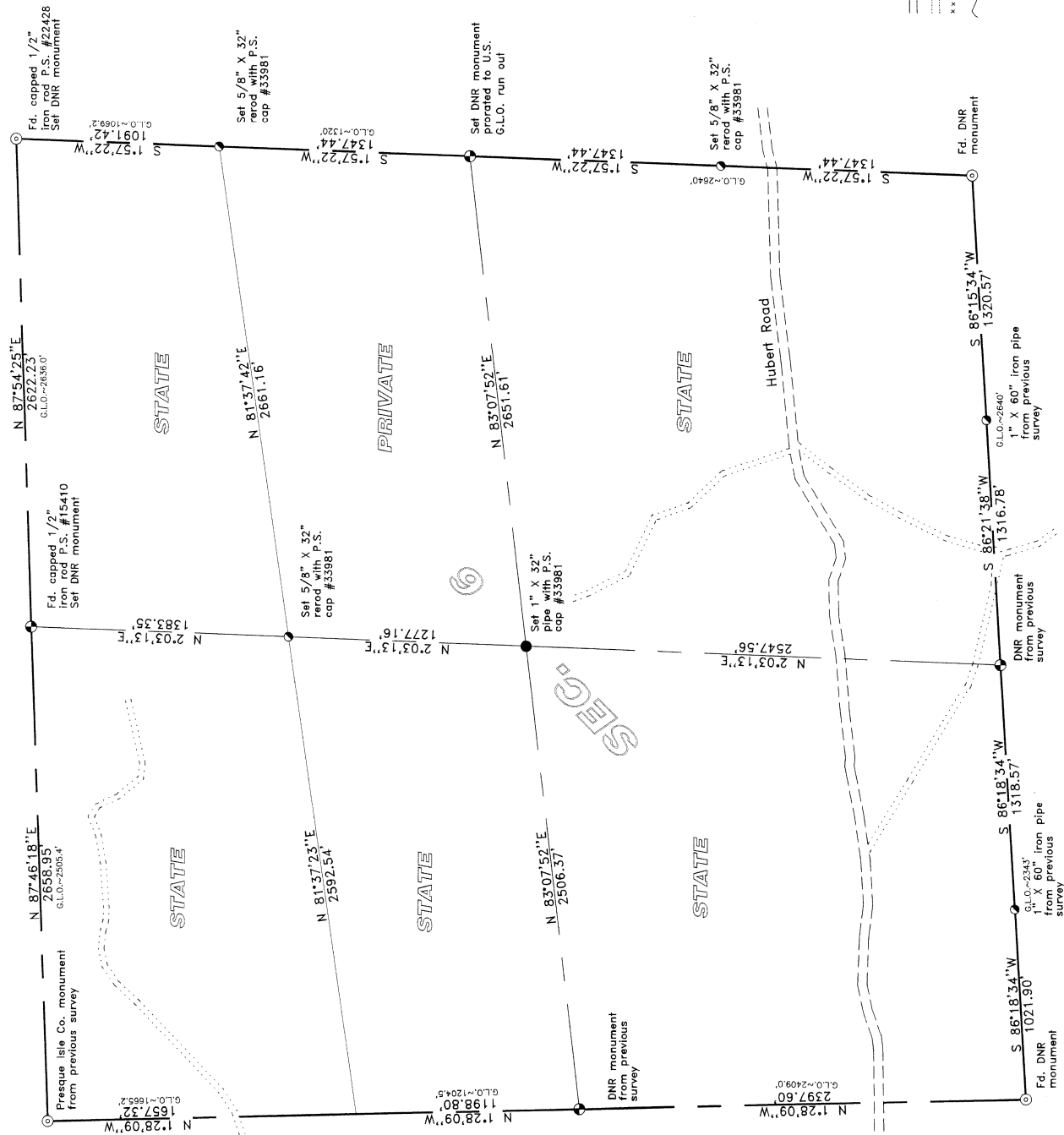
SP = Single Proportion to U.S.
 DP = Double Proportion to U.S.
 US = U.S. Govt. General Land Office (GLO) township subdivided in 1840.

M = Measured on true line.
 Mc = Meas. & Cut in on true line.
 Cr = Computed from random line.
 C = Computed from true line.
 P.S. #15410 = Delmer Porter
 P.S. #22428 = Ronald Bisher



- ⊙ = Section Corner
- ⊙ = Quarter Corner
- ⊙ = Center of Section
- ⊙ = 1/16 Corner

- Gravel Road
- Trail Road
- Fence Line
- Lake or River



Michigan
Department of Natural Resources
 Forest Management Division - Lower Peninsula - Survey Section

TYPE OF SURVEY: **BOUNDARY & SECTION**
 SUBDIVISION: **Montmorency County**
 LOCATION: **T32N,R4E Sec. 6**
 DIVISION: **Forest Management SURVEY PROJ. NO: FM-08-01**
 DRAWN BY: **Carl T. Kiskila, PS #33981** DATE: **August, 2001**
 FIELD WORK: **Matt Faldpausch** DATE: **August, 2001**
C.T.K., J.R., M.F.

PLAN NO: R-60-AX