



LAND CORNER RECORDATION CERTIFICATE
Filing Requirement of Act 74, Mich. P.A. 1970

For corners in
MONTMORENCY
(County)

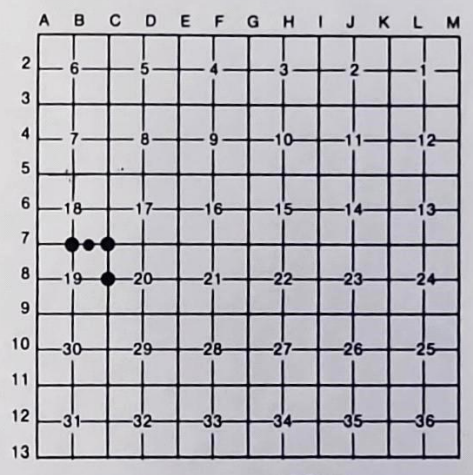
Located In: Corner Code --#

- 1. Public Land Survey T 32N R 4E B-7, C-7
C-8
2. Property Controlling in Section S 18 T R 16
S T R
3. Miscellaneous Property in Sec. S T R
S T R

Register of Deeds Stamp & File Number

- 4. Lot No. , Recorded Plat
5. Private Claims

I, C.T. KIISKILA, in a field survey on OCTOBER 24, 19 94, do hereby certify that under requirements of P.A. 74, Michigan P.A. of 1970, the corner points mentioned in lines 1 and 2 above were in conformance with regulations and rules therefore as required in the current manual of survey instructions of the United States Department of the Interior, Bureau of Land Management or by a decree of a Court of Law and/or that the corner points mentioned in lines 3, 4 and 5 above were in conformance with the rules of the Michigan Board of Land Surveyors or by a Decree of a Court of Law; established, re-established, monumented, re-monumented, recovered, found as expressed below:



NOTE: Not more than 4 corners, all in the same town and range, may be recorded on this certificate.

- A. Description of original monument and accessories and/or subsequent restoration:
B-7 C-7 C-8

(NO EVIDENCE OF G.L.O. CORNER, B.T.'S, LINE TREES & TOPOGRAPHY, AS CALLED OUT IN THE G.L.O. LINE NOTES; UNLESS NOTED IN ITEM "B" BELOW.)



- B. Description of corner evidence found and/or method applied in restoring or reestablishing corner:

B-7 REESTABLISHED S 1/4 COR S-18 PRORATED TO U.S. GLO RUN OUT BETW FD SE COR S-18 & REESTAB'D SW COR S-18. FD OLD 1 1/2" PIPE S86°53'W, 248.0'.
C-7 FD & ACCEPTED 1 3/4" PIPE FOR NE COR S-19. PS D.PORTER FD & RECORDED THIS COR IN 1973. FN REMAINS (FN ALL DOWN) TO E-W-S.
C-8 FD 1 3/4" PIPE FOR E 1/4 COR S-19. SINGLE STRAND OF SMOOTH WIRE TO NORTH & WEST. PS D.PORTER FD 2" PIPE HERE IN 1973. (WE FD STUMP OF ONE OF HIS WITS, ASPEN NW, FITS OK).
16 ESTABLISHED SW COR OF SE 1/4 OF SE 1/4 OF S-18 PER STANDARD BLM INSTRUCTIONS. E-W TRAIL IS 246' NORTH.

- C. Description of monument for corner and accessories established to perpetuate locating the position of the corner:

B-7 DROVE 1" X 60" GALV PIPE W/ALUM DNR CAP. SET CED POST.
11" CEDAR N50°W 26.88'
8" CEDAR N02°E 36.98'
9" CEDAR N35°E 37.59'
6" SPRUCE S50°W 8.49'
C-7 FD 1 3/4" PIPE. SET CED POST.
118" R PINE N03°E 35.02'
118" MAPLE N48°E 29.31'
5" W BIRCH N58°W 13.73'
4" BALSAM S14°W 16.46'
TREES HAVE UPPER & LOWER BLAZE
OLD WITNESS
D. PORTER WITNESSES
C-8 FD 1 3/4" X 25" PIPE (ABOVE GRD) AT FENCE CORNER.
6" POPLAR N73°E 30.58'
12" R PINE S40°W 29.58'
4" CHERRY S31°E 28.55'
4" POPLAR N57°W 52.50'
W EDGE 2-TRACK EAST 42.5'
16 DR 5/8" X 34" REROD W/PS CAP. SET CED POST W/LOC TAG.
4" MAPLE N80°W 5.68'
4" MAPLE N60°E 6.22'
6" MAPLE S65°E 14.05'
FD OLD 1 1/4" PIPE
S86°20'W 111.6'

Signed by Carl T. Kiiskila Date 2-27-97

Surveyor's Michigan License No. 33981

205

# LAND CORNER RECORDATION CERTIFICATE

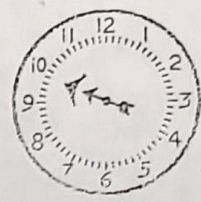
FILING REQUIREMENT OF ACT 74, MICH. P.A. 1970

1 ~~MM~~ 63

RECEIVED FOR RECORD  
Date OCT 7 - 1973 M.

HOMER VALENTINE  
Register of Deeds

OCT - 2 '73 AM



REGISTER OF DEEDS (STAMP AND)  
FILING NUMBER COUNTY  
REGISTER OF DEEDS

FOR CORNERS OF--:	LOCATED IN--:	CORNER CODE NUMBER
1. PUBLIC LAND SURVEY _____ T. _____ N. _____ S. _____ R. _____ E. _____ W. _____		_____
2. PROPERTY CONTROLLING IN SECTION <u>20</u> T. <u>32</u> S. <u>4</u> R. <u>4</u> W. _____		<u>2, 5, 6,</u>
3. MISCELLANEOUS PROPERTY IN SECTION _____ T. _____ N. _____ S. _____ R. _____ E. _____ W. _____		_____
4. LOT NO. _____, RECORDED PLAT _____		_____
5. PRIVATE CLAIMS _____		_____

I, Delmer E. Porter do hereby certify that under requirements of P.A. 74, Michigan P.A. of 1970, the corner points mentioned in lines 1 and 2 above (identified with circles on index code diagram - over) were, in a field survey on 4-25 & 26 1973, established, re-established, monumented, re-monumented, recovered or restored as expressed below and in conformance with regulations and rules therefore as required in the current manual of survey instructions of the United States Department of the Interior, Bureau of Land Management or by a decree of a court of law. Furthermore, that the corner points mentioned in lines 3, 4 and 5 above were, in a field survey on \_\_\_\_\_ 19\_\_\_\_, found, recovered, restored, established or re-established as expressed below and in conformance with the rules of the Michigan State Board of Registration for Land Surveyors or, by a Decree of a Court of law:

A. Description of original monument and accessories and/or subsequent restoration:

B. Description of corner evidence found and/or method applied in restoring or re-establishing corner:

2	5	6
Set 4" Conc. Mon. by single proportionate measurement between N 1/4 Cor. & NE Sec. Cor	Set 4" Conc. Mon. by single proportionate measurement between N 1/4 Cor. & Center 1/4 Cor.	Set 4" Conc. Mon. at intersection of N-S & E-W 1/8 lines NE 1/4

C. Description of monument for corner and accessories established to perpetuate locating the position of the corner:

2	5	6
4" Conc. Mon.	4" Conc. Mon.	4" Conc. Mon.
4" Maple in clump N02° W 44.50'	8" Oak N48°E 37.47'	6" Cedar N75°E 7.18'
4" Maple in clump N40°E 31.81'	12" Oak S30°E 9.87'	8" Cedar S01°E 8.37'
4" Maple in clump S60°E 31.95'	6" Oak S40°W 9.09'	10" Cedar N 10°W 12.96'

SIGNED BY Delmer E. Porter DATE Sept 22, 1973

SURVEYOR'S MICHIGAN REGISTRATION NO. 15410 (SEAL)

FOR STATE AND UNITED STATES AGENCIES:

SIGNED BY \_\_\_\_\_ DATE \_\_\_\_\_  
CHIEF OF SURVEY PARTY

APPROVED AND SIGNED BY \_\_\_\_\_ DATE \_\_\_\_\_  
MICHIGAN REGISTERED LAND SURVEYOR (SEAL)

SURVEYOR'S MICHIGAN REGISTRATION NO. \_\_\_\_\_

# LAND CORNER RECORDATION CERTIFICATE

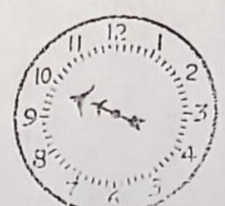
FILING REQUIREMENT OF ACT 74, MICH. P.A.1970

1 PAGE 64

RECEIVED FOR RECORD  
Date Oct 2-1973  
HOMER VALENTINE  
Register of Deeds

FOR CORNERS OF--	LOCATED IN--	CORNER CODE NUMBER
1. PUBLIC LAND SURVEY <u>Sec 20 T. 32 S. R. 4</u>	<u>W.</u>	D-8, E-7, C-9 C-7, D-7, C-8,
2. PROPERTY CONTROLLING IN SECTION _____ .T. _____	N. _____ S. _____ R. _____	_____
3. MISCELLANEOUS PROPERTY IN SECTION _____ .T. _____	N. _____ S. _____ R. _____	_____
4. LOT NO. _____ , RECORDED PLAT _____		
5. PRIVATE CLAIMS _____		

OCT - 2 '73 AM



REGISTER OF DEEDS STAMP AND MONUMENT NUMBER

I, Delmer E. Porter do hereby certify that under requirements of P.A. 74, Michigan P.A. of 1970, the corner points mentioned in lines 1 and 2 above (identified with circles on index code diagram - over) were, in a field survey on 3-21 & 22 1973, established, re-established, monumented, re-monumented, recovered or restored as expressed below and in conformance with regulations and rules therefore as required in the current manual of survey instructions of the United States Department of the Interior, Bureau of Land Management or by a decree of a court of law. Furthermore, that the corner points mentioned in lines 3, 4 and 5 above were, in a field survey on \_\_\_\_\_ 19\_\_\_\_, found, recovered, restored, established or re-established as expressed below and in conformance with the rules of the Michigan State Board of Registration for Land Surveyors or, by a Decree of a Court of law:

A. Description of original monument and accessories and/or subsequent restoration:

B. Description of corner evidence found and/or method applied in restoring or re-establishing corner:

<u>SE 5-18</u> C-7 Fd. 2" Pipe & 2"x2" Sq Cedar stake in Fe. Cor.	C-9 <u>SE 5-19</u> Fd. 3"x3" Sq Cedar stake at Fe. Cor.	D-8 <u>Ch 5-20</u> Set 4" Conc. Mon. at N-S & E-W Lines	D-7 <u>N 1/4 - 20</u> Fd. 2" Pipe in Fe. Cor E-7 Fd. 2"x2" Sq Cedar stake W/hack marks in Fe. Cor. raised W/ 1/2" Rd W/RLS Cap
<u>E 1/4 19</u> C-8 Fd. 2" Pipe at Fe. Cor.	<u>Set within 1/2" of Pipe</u>		

C. Description of monument for corner and accessories established to perpetuate locating the position of the corner:

C-7 2" Pipe 10" Birch 70°W12.45' 8" Norway Pine N03° E 35.00' 8" Maple N60°E29.38'	C-9 3"x3" Cedar Stake & 1/2" Rod W/RLS Cap 9" Red Oak N85°W 10.47' 4" Red Oak N25°E 3.78' 6" Red Oak S02°E21.34'	D-8 4" Conc. Mon. 6"W. Birch N25°E7.21' 5"Oak S60°E27.81' 6"Oak S60°W21.28'	D-7 2" Pipe 5" Maple N15°E 67.45' 5" Maple N80°E 30.30'
C-8 2" Pipe 12" Aspen N45°W66.27' 3" Cherry N50°E51.93' 3' Norway Pine S85°E 68.29'	<u>16"W. Pine stump NBT</u> N17°W 7.00	E-7 1/2" Rod W/RLS Cap 3" Maple N70°E13.36' 4" Maple S25°E16.83' 3"W. Birch N40°W44.74'	6" W. Birch N85°E 43.33'

SIGNED BY Delmer E. Porter DATE Sept 22, 1973

SURVEYOR'S MICHIGAN REGISTRATION NO. 15410 (SEAL)

FOR STATE AND UNITED STATES AGENCIES:

SIGNED BY \_\_\_\_\_ DATE \_\_\_\_\_  
CHIEF OF SURVEY PARTY

APPROVED AND SIGNED BY \_\_\_\_\_ DATE \_\_\_\_\_  
MICHIGAN REGISTERED LAND SURVEYOR (SEAL)

SAME AS RECORDED

24

### MONTMORENCY COUNTY REMONUMENTATION LAND CORNER RECORDATION CERTIFICATE Filing Requirement of Act 74, Mich. P.A. 1970

For corners in MONTMORENCY (County) Located in: MONTMORENCY (Township) Corner Code # E-3

1. Public Land Survey T 32N R 4E \_\_\_\_\_  
 T \_\_\_\_\_ R \_\_\_\_\_  
 T \_\_\_\_\_ R \_\_\_\_\_  
 T \_\_\_\_\_ R \_\_\_\_\_

2. Property Controlling in Section S \_\_\_\_\_ T \_\_\_\_\_ R \_\_\_\_\_  
 S \_\_\_\_\_ T \_\_\_\_\_ R \_\_\_\_\_

3. Miscellaneous Property in Sec. S \_\_\_\_\_ T \_\_\_\_\_ R \_\_\_\_\_  
 S \_\_\_\_\_ T \_\_\_\_\_ R \_\_\_\_\_

4. Lot No. \_\_\_\_\_, Recorded Plat \_\_\_\_\_

5. Private Claims \_\_\_\_\_

#### Register of Deeds Stamp & File Number

	A	B	C	D	E	F	G	H	I	J	K	L	M
2	6			5		4		3		2		1	
3					7								
4	7			8		9		10		11		12	
5													
6	18			17		16		15		14		13	
7													
8	19			20		21		22		23		24	
9													
10	30			29		28		27		26		25	
11													
12	31			32		33		34		35		36	
13													

I, Mark V. Herman, in a field survey on August 4, 2011, do hereby certify that under requirements of P.A. 74, Michigan P.A. of 1970, the corner points mentioned in lines 1 and 2 above were in conformance with regulations and rules thereof as required in the current manual of survey instructions of the United States Department of the Interior, Bureau of Land Management or by a decree of a Court of Law and/or that the corner points mentioned in lines 3, 4 and 5 above were in conformance with the rules of the Michigan Board of Land Surveyors or by a Decree of a court of Law; established, re-established, monumented, re-monumented, recovered, found as expressed below:

**NOTE: Not more than 2 corners, all in the same town and range, may be recorded on this certificate.**

**A. Description of original monument and accessories and/or subsequent restoration:**

- E-3 - CORNER COMMON TO SECTION'S 4, 5, 8 & 9, T32N, R4E  
 1856 Josiah Knauer, DS, Set Sec. Post. Wit's. (A) (Y. Pine 8" N24°W 8 lks(5.28')) (B) (Y. Birch 10" S59°E 13 lks(8.58'))
- Oct 1988 - Donald E. Marlatt, PS #18660, Act #132, Rec. L. 3, P. 580 - 584, Mont. Co. Records, Fd. 1/2" Rod.  
 Wit's (C) (S20°W 44.5' 12" Cedar) (D) (S45°W 64.4' 10" Maple) (E) (N20°W 57.75' 12" Balsam)
- Dec 1989 - DEM, PS #18660, Act #132, Rec. L. 3, P. 585, Mont. Co. Records, Fnd. 1/2" Rod, Same info. as above.
- Sep 1996 - Wayne T. Lewis, PS #41922, Field Notes, Fd. RR (rerod) Bent Over, Set RR (rerod) w/Cap in place.  
 Wit's. (E) (N15°W 57.70' 12" Balsam Set Tag) (F) (N05°W 56.95' 8" W. Pine)  
 (G) (N15°E 61.25' 10" Aspen) (H) (S60°W 70.93' 18" Hemlock)
- Feb 2006 - Delmer E. Porter, PS#15410, LCRC Rec. L. 1, P. 671, Mont. Co. Records, Fnd. 1/2" Rod in Centerline of Hubert Road.  
 Wit's. (D) (S45°W 64.40' 12" Maple Fd. Spike) (E) (N20°W 57.75' 12" Balsam Fd. Tag #41922)  
 (I) (N27°E 59.98' 4" Maple in clump) (J) (S36°E 66.68' 5" Cedar)

**B. Description of corner evidence found and/or method applied in restoring or reestablishing corner:**

- E-3  
 Aug 2011 - Fnd. 1/2" Bar & Cap #41922, 4.5± N. of Centerline of Hubert Road, a gravel road running E/W.  
 Wit's. (D) (S58°W 64.40'(M) Fd. N/T #15410 in 14" Maple) (E) (N13°W 57.75'(M) Fd. N/T #15410 & #41922 in 12" Balsam)  
 (I) (N28°E 59.91'(M) Fd. N/T #15410 in 5" Maple in clump) (J) (S36°E 66.62'(M) Fd. N/T #15410 in 8" Cedar)
- Re-placed 1/2" Bar & Cap #41922 with a 4"x36" Concrete Monument with Mont. Co. Remon. Cap on top, 6" below grade.
- There is no apparent conflicting evidence at this location.

**C. Description of monument for corner and accessories established to perpetuate locating the position of the corner:**

E-3 - CORNER COMMON TO SECTION'S 4, 5, 8 & 9, T32N, R4E  
 4"x36" Concrete Monument with Mont. Co. Remon. Cap on top, 4.5± N. of Centerline of Hubert Road, 6" below grade.

Accept & ratify corner as the best available evidence of the position of the original corner.  
 Accepted by the peer group on August 26, 2011.

- S58°W 64.40' 14" Maple - Set N/T #50438 above Fnd. N/T #15410
- N13°W 57.75' 12" Balsam - Set N/T #50438 above Fnd. N/T #15410 & #41922
- N28°E 59.91' 5" Maple in clump - Set N/T #50438 above Fnd. N/T #15410
- S36°E 66.62' 8" Cedar - Set N/T #50438 above Fnd. N/T #15410

Signed by \_\_\_\_\_ Date September 2, 2011

Surveyor's Michigan License No. 50438

SAME AS RECORDED

### MONTMORENCY COUNTY REMONUMENTATION LAND CORNER RECORDATION CERTIFICATE Filing Requirement of Act 74, Mich. P.A. 1970

For corners in MONTMORENCY (County) Located in: MONTMORENCY (Township) Corner Code # E-4

1. Public Land Survey T 32N R 4E \_\_\_\_\_  
 T \_\_\_\_\_ R \_\_\_\_\_  
 T \_\_\_\_\_ R \_\_\_\_\_  
 T \_\_\_\_\_ R \_\_\_\_\_

2. Property Controlling in Section S \_\_\_\_\_ T \_\_\_\_\_ R \_\_\_\_\_  
 S \_\_\_\_\_ T \_\_\_\_\_ R \_\_\_\_\_

3. Miscellaneous Property in Sec. S \_\_\_\_\_ T \_\_\_\_\_ R \_\_\_\_\_  
 S \_\_\_\_\_ T \_\_\_\_\_ R \_\_\_\_\_

4. Lot No. \_\_\_\_\_, Recorded Plat \_\_\_\_\_

5. Private Claims \_\_\_\_\_

#### Register of Deeds Stamp & File Number

	A	B	C	D	E	F	G	H	I	J	K	L	M
2	6			5		4		3		2		1	
3													
4	7			8		9		10		11		12	
5													
6	15			17		16		15		14		13	
7													
8	19			20		21		22		23		24	
9													
10	30			29		28		27		26		25	
11													
12	31			32		33		34		35		36	
13													

I, Mark V. Herman, in a field survey on August 13, 2011, do hereby certify that under requirements of P.A. 74, Michigan P.A. of 1970, the corner points mentioned in lines 1 and 2 above were in conformance with regulations and rules thereof as required in the current manual of survey instructions of the United States Department of the Interior, Bureau of Land Management or by a decree of a Court of Law and/or that the corner points mentioned in lines 3, 4 and 5 above were in conformance with the rules of the Michigan Board of Land Surveyors or by a Decree of a court of Law; established, re-established, monumented, re-monumented, recovered, found as expressed below:

NOTE: Not more than 2 corners, all in the same town and range, may be recorded on this certificate.

**A. Description of original monument and accessories and/or subsequent restoration:**

E-4 - 1/4 CORNER COMMON TO SECTION'S 8 & 9, T32N, R4E

1856 Josiah Knauer, DS, Set Sec. Post. Wit's. (A) (W. Birch 12" N53°E 5 lks(3.30')) (B) (W. Pine 9" N84°W 14 lks(9.24'))

Oct 1988 - Donald E. Marlatt, PS #18660, Act #132 Rec. L. 3, P. 580 - 584, Mont. Co. Records, Set 1/2" Rod & Cap by Single Proportion. No Wit's.

**B. Description of corner evidence found and/or method applied in restoring or reestablishing corner:**

E-4

Aug 2011 - Fnd. 1/2" Bar & Cap #18660 in N/S Single Wire Fence Line next to "T" post and old Wooden Fence Post. No existing witnesses were found.

Re-placed 1/2" Bar & Cap #18660 with a 4"x36" Concrete Monument with Mont. Co. Remon. Cap on top.

There is no apparent conflicting evidence at this location.

**C. Description of monument for corner and accessories established to perpetuate locating the position of the corner:**

E-4 - 1/4 CORNER COMMON TO SECTION'S 8 & 9, T32N, R4E

4"x 36" Concrete Monument with Montmorency County Remon. Cap on top in N/S fence line.

Accept & ratify corner as a careful and faithful establishment of the position of the original corner. Accepted by the peer group on August 26, 2011.

N65°E 14.83' 24" R. Pine - Set N/T #50438

N15°W 48.31' 12" Oak - Set N/T #50438

N50°W 29.05' 10" Maple - Set N/T #50438

S40°W 36.56' 8" Maple - Set N/T #50438

Signed by \_\_\_\_\_ Date September 2, 2011

Surveyor's Michigan License No. 50438

SAME  
As Recorded

26

**MONTMORENCY COUNTY REMONUMENTATION  
LAND CORNER RECORDATION CERTIFICATE  
Filing Requirement of Act 74, Mich. P.A. 1970**

For corners in	Located in:		
<u>MONTMORENCY</u> (County)	<u>MONTMORENCY</u> (Township)		Corner Code #
1. Public Land Survey	T <u>32N</u> R <u>4E</u>		<u>E - 5</u>
	T _____ R _____		_____
	T _____ R _____		_____
	T _____ R _____		_____
2. Property Controlling in Section	S _____ T _____ R _____		_____
	S _____ T _____ R _____		_____
3. Miscellaneous Property in Sec.	S _____ T _____ R _____		_____
	S _____ T _____ R _____		_____
4. Lot No. _____, Recorded Plat _____			
5. Private Claims _____			

**Register of Deeds Stamp & File Number**

	A	B	C	D	E	F	G	H	I	J	K	L	M
2	6		5		4		3		2		1		
3													
4	7		8		9		10		11		12		
5													
6	18		17		16		15		14		13		
7													
8	19		20		21		22		23		24		
9													
10	30		29		28		27		26		25		
11													
12	31		32		33		34		35		36		
13													

I, Mark V. Herman, in a field survey on August 4, 2011, do hereby certify that under requirements of P.A. 74, Michigan P.A. of 1970, the corner points mentioned in lines 1 and 2 above were in conformance with regulations and rules thereof as required in the current manual of survey instructions of the United States Department of the Interior, Bureau of Land Management or by a decree of a Court of Law and/or that the corner points mentioned in lines 3, 4 and 5 above were in conformance with the rules of the Michigan Board of Land Surveyors or by a Decree of a court of Law; established, re-established, monumented, re-monumented, recovered, found as expressed below:

**NOTE: Not more than 2 corners, all in the same town and range, may be recorded on this certificate.**

**A. Description of original monument and accessories and/or subsequent restoration:**

- E-5 - CORNER COMMON TO SECTION'S 8, 9, 16 & 17, T32N, R4E  
 1856 Josiah Knauer, DS, Set Sec. Post. Wit's. (A) (N. Pine 25" N30°W 9 lks(5.94')) (B) (Maple 5" S40°E 23 lks(15.18'))  
 Feb 1975 - Donald E. Marlatt, PS #18660, Act #132 Rec. L. 2, P. 66, Mont. Co. Records, Fd. Fence Corner, No Wit's.  
 Feb 1975 - DEM, PS #18660, LCRC Rec. L. 1, P. 139, Mont. Co. Records, Existing Fence Corner.  
 Wit's (C) (S30°E 27.8' 15" Oak) (D) (S60°E 20.9' 6" Maple)  
 Dec 1981 - James A. Beck, PS #21559, Act #132 Not Recorded, Set 1/2" Rod with Cap LS 21559 in Remnants of Fence Corner Post.  
 Wit's (C) (S30°E 27.8' 15" Oak) (D) (S60°E 20.9' 6" Maple)  
 July 1987 - JAB, PS #21559, Act #132 Rec. L. 10005, P. 289 - 291, Mont. Co. Records, No Cor. Desc., Same Wit's as above.  
 Oct 1988 - Donald E. Marlatt, PS #18660, Act #132, Rec. L. 3, P. 580 - 584, Mont. Co. Records, No Cor. Desc. or Wit's.

**B. Description of corner evidence found and/or method applied in restoring or reestablishing corner:**

E-5  
 Aug 2011 - Fnd. 1/2" Bar & Cap illegible, at "T" Fence Post, in fence line running N/S. South edge of Thunder Bay River is N. 885'±.  
 Wit's. (C) (S14°E 27.97'(M) Fd. blaze in 22" Oak) (D) (S53°E 20.93'(M) Fd. blaze in 16" Oak)  
 Re-placed 1/2" Bar & Cap with a 4"x36" Concrete Monument with Mont. Co. Remon. Cap on top.  
 There is no apparent conflicting evidence at this location.

**C. Description of monument for corner and accessories established to perpetuate locating the position of the corner:**

E-5 - CORNER COMMON TO SECTION'S 8, 9, 16 & 17, T32N, R4E  
 4"x36" Concrete Monument with Mont. Co. Remon. Cap on top, in N/S fence line.  
 Accept & ratify corner as a careful and faithful establishment of the position of the original corner.  
 Accepted by the peer group on August 26, 2011.

- S14°E 27.97' 22" Oak - Set N/T #50438
- S53°E 20.93' 16" Oak - Set N/T #50438
- N24°E 10.39' 10" Oak - Set N/T #50438
- N30°W 18.60' 10" Balsam - Set N/T #50438

Signed by \_\_\_\_\_ Date September 2, 2011

Surveyor's Michigan License No. 50438

SAME AS RECORDED

28

MONTMORENCY COUNTY REMONUMENTATION LAND CORNER RECORDATION CERTIFICATE Filing Requirement of Act 74, Mich. P.A. 1970

For corners in Located in: MONTMORENCY (County) MONTMORENCY (Township) Corner Code # 1. Public Land Survey T 32N R 4E F-3 2. Property Controlling in Section S T R 3. Miscellaneous Property in Sec. S T R 4. Lot No. , Recorded Plat 5. Private Claims

Register of Deeds Stamp & File Number

Table with 13 columns (A-M) and 13 rows (1-13) for recording deed stamps and file numbers.

I, Mark V. Herman, in a field survey on August 10, 2012, do hereby certify that under requirements of P.A. 74, Michigan P.A. of 1970, the corner points mentioned in lines 1 and 2 above were in conformance with regulations and rules thereof as required in the current manual of survey instructions of the United States Department of the Interior, Bureau of Land Management or by a decree of a Court of Law and/or that the corner points mentioned in lines 3, 4 and 5 above were in conformance with the rules of the Michigan Board of Land Surveyors or by a Decree of a court of Law; established, re-established, monumented, re-monumented, recovered, found as expressed below:

NOTE: Not more than 2 corners, all in the same town and range, may be recorded on this certificate.

A. Description of original monument and accessories and/or subsequent restoration:

F-3 - 1/4 CORNER COMMON TO SECTION'S 4 & 9, T32N, R4E 1856 Josiah Knauer, DS, Set Qtr. Sec. Post. Wit's (A) (Y. Birch 12" S20°E 4 lks(2.64')) (B) (Cedar 6" N24°E 28 lks(18.48'))

Circa - 1933 - F. Smith, Sec. Diag., not recorded, Shows location of single proportion between corners E-3 and G-3 and makes note that bearing of road is not on Section Line. Also an indication, by notes, that McQueen had measured the mile at some point.

Sept 1996 - Wayne T. Lewis, PS #41922, Act #132 Rec. L. 10004, P. 400-401, Mont. Co. Records, Set 1/2" Rod & Cap by Proportionate Measurement.

Wit's. (C) (N60°W 83.85' Power Pole) (D) (S20°W 32.85' 5" Basswood) (E) (S45°W 69.37' 10" Cedar) (F) (NORTH 33.12' 1/2" Rerod)

B. Description of corner evidence found and/or method applied in restoring or reestablishing corner:

F-3 Aug 2012 - Fnd. 1/2" bar & cap #41922 by SP method, in centerline of Hubert Rd. Fd. No evidence of original corner of government witnesses. Wit's Fnd. (C) (N60°W 83.78' Fd. N/T #41922 in Power Pole) (F) (NORTH 33.50' 1/2" Rerod)

Set Conc. Mon. & Mont. Co. Remon. Cap on top by Single Proportionate Measurement method between corner E-3 and Pipe found at G-3, Mile measures 5364.58' GLO was 5273.40'. Set at 2682.29' from fd. pipe at G-3 and E-3. 1/2" Bar & Cap #41922 as set by Wayne T. Lewis is S40°W 6.10' from the SP position.

C. Description of monument for corner and accessories established to perpetuate locating the position of the corner:

F-3 - 1/4 CORNER COMMON TO SECTION'S 4 & 9, T32N, R4E 4"x36" Conc. Mon. with Mont. Co. Remon. Cap on top, 6" below grade, 4± N. of centerline of Hubert Rd.

Accepted as a careful and faithful establishment of the position of the original corner. Accepted by the peer group on August 31, 2012.

- N64°W 85.76' P. Pole Fnd. N/T #41922 and Set N/T #50438 above
N02°E 28.96' Exist. 1/2" Rerod
S65°E 89.96' 18" Spruce Set N/T #50438
S35°W 38.44' 12" Basswood Set N/T #50438
S40°W 6.10' 1/2" Bar & Cap #41922 a conflicting monument

Signed by \_\_\_\_\_ Date September 5, 2012

Surveyor's Michigan License No. 50438



SAME AS RECORDED

### MONTMORENCY COUNTY REMONUMENTATION LAND CORNER RECORDATION CERTIFICATE Filing Requirement of Act 74, Mich. P.A. 1970

For corners in MONTMORENCY (County) Located in: MONTMORENCY (Township) Corner Code # G-3

1. Public Land Survey T 32N R 4E \_\_\_\_\_  
 T \_\_\_\_\_ R \_\_\_\_\_  
 T \_\_\_\_\_ R \_\_\_\_\_  
 T \_\_\_\_\_ R \_\_\_\_\_

2. Property Controlling in Section S \_\_\_\_\_ T \_\_\_\_\_ R \_\_\_\_\_  
 S \_\_\_\_\_ T \_\_\_\_\_ R \_\_\_\_\_

3. Miscellaneous Property in Sec. S \_\_\_\_\_ T \_\_\_\_\_ R \_\_\_\_\_  
 S \_\_\_\_\_ T \_\_\_\_\_ R \_\_\_\_\_

4. Lot No. \_\_\_\_\_, Recorded Plat \_\_\_\_\_

5. Private Claims \_\_\_\_\_

#### Register of Deeds Stamp & File Number

	A	B	C	D	E	F	G	H	I	J	K	L	M
2	6		5		4		3		2		1		
3													
4	7		8		9		10		11		12		
5													
6	18		17		16		15		14		13		
7													
8	19		20		21		22		23		24		
9													
10	30		29		28		27		26		25		
11													
12	31		32		33		34		35		36		
13													

I, Mark V. Herman, in a field survey on July 25, 2012, do hereby certify that under requirements of P.A. 74, Michigan P.A. of 1970, the corner points mentioned in lines 1 and 2 above were in conformance with regulations and rules thereof as required in the current manual of survey instructions of the United States Department of the Interior, Bureau of Land Management or by a decree of a Court of Law and/or that the corner points mentioned in lines 3, 4 and 5 above were in conformance with the rules of the Michigan Board of Land Surveyors or by a Decree of a court of Law; established, re-established, monumented, re-monumented, recovered, found as expressed below:

**NOTE: Not more than 2 corners, all in the same town and range, may be recorded on this certificate.**

**A. Description of original monument and accessories and/or subsequent restoration:**  
 G-3 - CORNER COMMON TO SECTION'S 3, 4, 9 & 10, T32N, R4E  
 1856 Josiah Knauer, DS, Set Sec. Post.  
 Wit's (A) (Y. Pine 10" S72°E 14 lks(9.24')) (B) (Tamarack 8" N48°W 14 lks(9.24'))

Circa 1933 - Frank Smith, Sec. Diag., Not Recorded, Established corner with 1 1/2" Iron Pipe with Steel Arm on bottom.  
 Wit's. (C) (S52°W 44.7' 3.0' W. Pine) (D) (N54°W 60' 16" Cedar)

Circa - Mont. Co. Rd. Comm. Notes by F. Smith, 1 1/2" Pipe. Wit's. (C) (S52°W 44.7' 36" W. Pine Stp.) (D) (N54°W 60.0' 16" Cedar Stp.)

\*\*\*\*HISTORY CONTINUED ON BACK\*\*\*\*

**B. Description of corner evidence found and/or method applied in restoring or reestablishing corner:**  
 G-3  
 July 2012 - Fnd. 1 1/2" diam. Pipe 1± below grade, 12± N. of Hubert Rd., 8± E. of Koenig Rd. North, 5± E. of Koenig Rd. South, ALSO Fd. Bar & Cap #41922, 4± N. of Hubert Rd., 3± W. of Koenig Rd. South, in centerline of Koenig Rd. North.  
 Did not find remains of stumps for pipe, stump to SW falls in road radius and stump to NW falls in old farm field.  
 Fd. No evidence of government corner or witnesses.  
 Wit's Fnd. (to 1/2" B&C): (E) (N32°W 47.09'(M) Fd. N/T #41922 in P. Pole) (F) (S67°W 69.47'(M) Fd. N/T #41922 in 18" Elm)  
 Re-placed 1 1/2" Pipe with 4"x36" Conc. Mon. with Mon. Co. Remon. Cap on top, 6" below grade.

**C. Description of monument for corner and accessories established to perpetuate locating the position of the corner:**  
 G-3 - CORNER COMMON TO SECTION'S 3, 4, 9 & 10, T32N, R4E  
 4"x36" Conc. Mon. with Mont. Co. Remon. Cap on top, 12± N. of Hubert Rd., 8± E. of Koenig Rd. North & 5± E. of Koenig Rd. South  
 Accepted as a the best available evidence of the position of the original corner.  
 Accepted by the peer group on August 31, 2012.

- N48°W 46.41' P. Pole Set N/T #50438 above Fnd. N/T #41922
- S65°W 81.17' 18" Elm Set N/T #50438 above Fnd. N/T #41922
- S35°E 66.21' 7" Aspen Set N/T #50438
- N53°E 32.55' Top Center of Tel. Ped. "L149"
- S48°W 12.32' Fd. Bar & Cap #41922 a conflicting monument

Signed by \_\_\_\_\_ Date September 5, 2012

Surveyor's Michigan License No. 50438