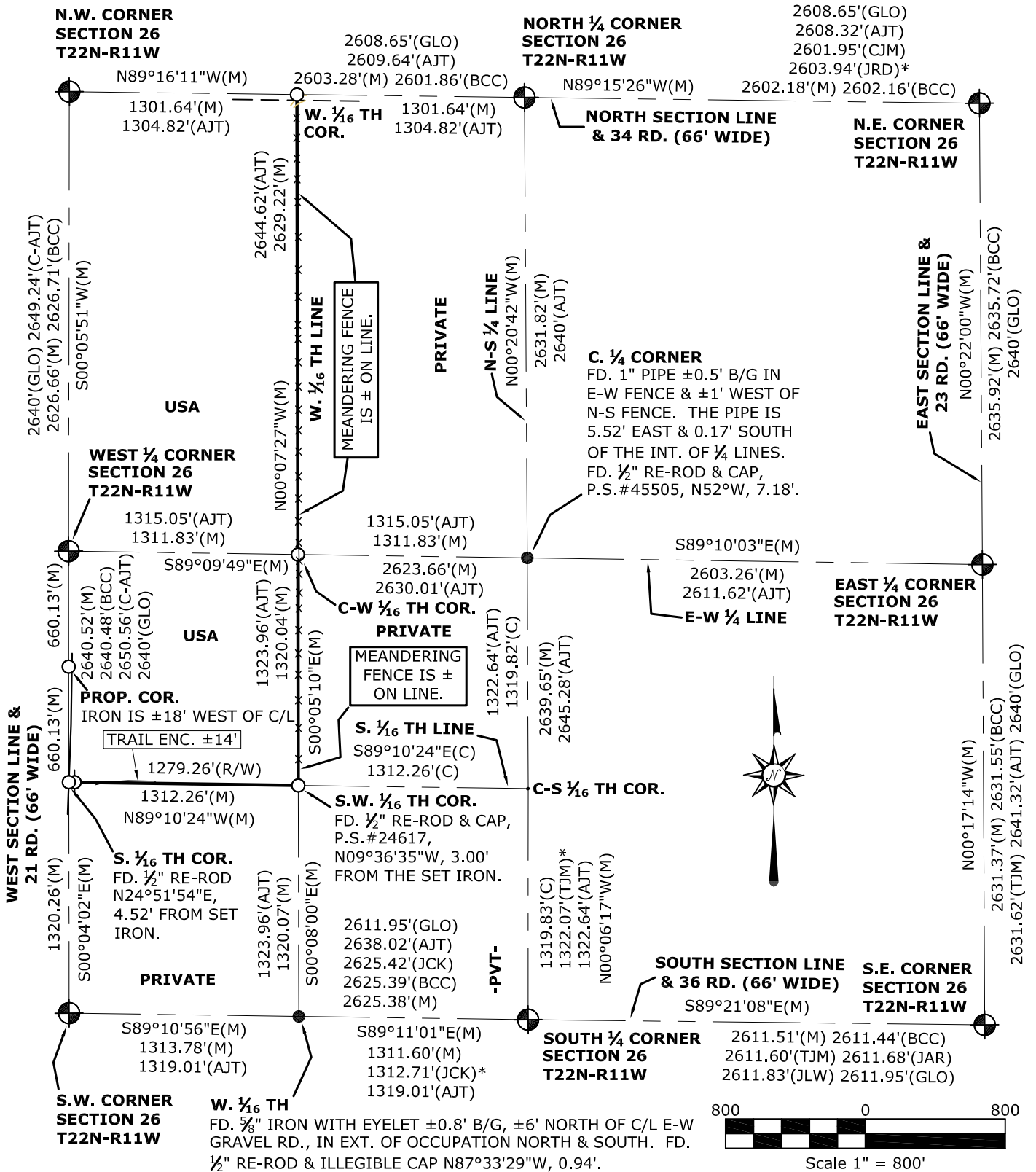


CERTIFICATE OF SURVEY

SPACE RESERVED FOR REGISTER OF DEEDS

LEGEND

- = EXISTING PLSS CORNER POSITION ACCEPTED
- = SET 1/2" x 18" LONG RE-BAR & CAP, P.S. #12345
- = SECTION SUBDIVISION CORNER FOUND AS NOTED
- (R) = RECORD GROUND DISTANCE
- (M) = MEASURED GRID DISTANCE
- (C) = CALCULATED GRID DISTANCE
- = BOUNDARY LINE POSTED & MARKED
- = FENCE LINE
- (R/W) = DISTANCE TO THE ROAD RIGHT OF WAY
- (*) = INDICATES MEASUREMENTS TO MONUMENTS NOT UTILIZED OR RECOVERED IN THIS SURVEY



I HEREBY CERTIFY THAT I HAVE SURVEYED THE PARCEL OF LAND DESCRIBED, THAT SAID SURVEY WAS PERFORMED WITH A FIELD ERROR OF CLOSURE "OF 1 IN 5000 OR GREATER", AND THAT I HAVE FULLY COMPLIED WITH THE REQUIREMENTS OF ACT #132, P.A. 1970.

Joseph J. Surveyor
Professional Surveyor No. 12345

BASIS OF BEARING: NAD 83 MICHIGAN CENTRAL STATE PLANE GRID

Joe Surveying INC

1-888-555-4321
PH. 231-555-1000 Fax. 231-555-1001
100 MAIN ST. ANYWHERE, MI 49660

DATE: 03/02/2017

DRN BY: AOL

CHD BY: JJS

SHEET 1 OF 4

CLIENT: U.S. Forest Service

Part of Section 26,
T22N, R11W,
Boon Twp., Wexford Co., MI.

FB/PG:
FS1/1-18

JOB NO.:
78910

LEGAL AND COORDINATES

SPACE RESERVED FOR REGISTER OF DEEDS

COORDINATE LIST
 NAD83 MICHIGAN CENTRAL ZONE INTERNATIONAL FEET STATE PLANE COORDINATES
 ELEVATIONS SHOWN TO TWO DECIMAL PLACES ARE ORTHOMETRIC HEIGHTS DERIVED FROM GPS
 MEASUREMENTS AND THE GEOID09 MODEL. ALL OTHER ELEVATIONS ARE SCALED.
 NAD83 GEOGRAPHIC COORDINATES ARE SHOWN AS NORTH LATITUDE AND WEST LONGITUDE.
 (DEG MIN SEC.ssss)

POINT	NORTHING	EASTING	ELEVATION	LATITUDE	LONGITUDE	S.F.	C.S.F.	CONVERGENCE
SE2622N11W	348551.47	19362149.68	1348.90	44 15 57.56327	85 35 57.49151	0.999982077	0.999922849	-0 52 14.67687
E142622N11W	351182.81	19362136.49	1336.62	44 16 23.54311	85 35 58.22236	0.99998061	0.999921971	-0 52 15.19315
NE2622N11W	353818.67	19362119.63	1369.23	44 16 49.56707	85 35 59.00485	0.999979156	0.999918959	-0 52 15.74591
N142622N11W	353852.41	19359517.66	1369.96	44 16 49.50801	85 36 34.77422	0.999979159	0.999918931	-0 52 41.01365
SW2622N11W	348618.42	19356913.22	1383.36	44 15 57.43217	85 37 09.45928	0.999982085	0.999921216	-0 53 05.51544
S142622N11W	348580.99	19359538.34	1356.92	44 15 57.46129	85 36 33.37991	0.999982083	0.999922475	-0 52 40.02871
W142622N11W	351258.93	19356910.12	1406.68	44 16 23.50399	85 37 10.06239	0.999980612	0.99991863	-0 53 05.94148
NW2622N11W	353885.59	19356914.58	1451.94	44 16 49.44013	85 37 10.55870	0.999979163	0.999915018	-0 53 06.29207
C142622N11W	351220.63	19359533.51	1361.13	44 16 23.52433	85 36 34.00210	0.999980611	0.999920803	-0 52 40.46822

LEGAL DESCRIPTION OF THE NATIONAL FOREST SYSTEM LANDS:

The Northwest 1/4 of the Southwest 1/4 AND the West 1/2 of the Northwest 1/4,
 Section 26, T22N-R11W, Twp. of Boon, Wexford County, Michigan.

SURVEYORS LEGEND

- GLO = Orson Lyon (1848)
- AJT = Augustus J. Teed (1895, 1905)
- JLW = Jerry L. Wilcox (1986)
- JCK = Joseph C. Kapelczak (1997)
- TJM = Thomas J. Mueller (2003)
- CJM = Christopher J. McCrimmon (2004)
- JRD = Joshua R. Davidson (2005)
- JAR = James A. Ray (1989, 2010)
- BCC = Brent C. Clough (2014 - WEX. CO. REMON)

DISTANCES ARE SHOWN IN NAD 83 MICHIGAN CENTRAL
 STATE PLANE GRID IN INTERNATIONAL FEET.
 1 INTERNATIONAL FOOT = 0.3048 METERS. COMBINED
 GRID FACTOR FOR THE PROJECT = 0.999917793.

GRID DISTANCE = GROUND DISTANCE
 COMBINED GRID FACTOR

I HEREBY CERTIFY THAT I HAVE SURVEYED THE PARCEL
 OF LAND DESCRIBED, THAT SAID SURVEY WAS
 PERFORMED WITH A FIELD ERROR OF CLOSURE "OF 1 IN
 5000 OR GREATER", AND THAT I HAVE FULLY COMPLIED
 WITH THE REQUIREMENTS OF ACT #132, P.A. 1970.

Joseph J. Surveyor
 Professional Surveyor No. 12345

Joe Surveying INC
 1-888-555-4321
 PH. 231-555-1000 Fax. 231-555-1001
 100 MAIN ST. ANYWHERE, MI 49660

DATE: 03/02/2017
 DRN BY: AOL
 CHD BY: JJS
 SHEET 2 OF 4

CLIENT: U.S. Forest Service

Part of Section 26,
 T22N, R11W,
 Boon Twp., Wexford Co., MI.

FB/PG:
 FS1/1-18
 JOB NO.:
 78910

CORNER WITNESSES

SPACE RESERVED FOR REGISTER OF DEEDS

NW Corner, Sec. 26, T22N, R11W

Found 3 1/2" brass cap monument +/-0.1' above grade, +/-6' west of the extension of the c/l trail north, +/-6' south of c/l e-w trail, on north edge of e-w pine row.
 N55E - spike in SE face of 20" Beech - 80.82'
 S04E - spike in W face of 14" R. Pine - 2.63'
 N83W - spike in N face of 18" R. Pine - 7.74'
 N20W - spike in E face of 18" R. Pine - 36.50'
 N03W - 1/2" re-bar & cap #52464 at position of the monument with brass cap #25869 - 29.53'
 North - carsonite post - 1'

N. 1/4 Corner, Sec. 26, T22N, R11W

Found 1 1/2" Wexford County Monument +/-8' below grade, +/-3' south of c/l e-w road.
 N01E - nail in 18" Cherry - 55.23'
 S02E - mag nail in P. Pole - 28.17'
 N58W - nail in 14" R. Pine - 89.65'
 N24W - nail in 20" R. Pine - 63.35'
 N07W - monument with brass cap #25869 - 14.15'

NE Corner, Sec. 26, T22N, R11W

Found 1 1/2" Wexford County Monument in monument box +/-0.2' below grade at intersection of roads.
 S88E - nail in P. Pole - 217.07'
 S18W - 1/2" re-bar in monument box - 1.37'
 S22W - nail in P. Pole - 147.35'
 S75W - nail in P. Pole - 82.87'
 S86W - spike in 48" Maple - 128.69'
 N40W - p.k. nail in P. Pole - 46.13'

W. 1/4 Corner, Sec. 26, T22N, R11W

Found 1 1/2" Wexford County Monument +/-1' below grade, +/-25' west of c/l n-s dirt trail.
 N63E - spike in SE face of 12" R. Pine - 55.65'
 N84E - spike in S face of 14" R. Pine - 39.11'
 S79E - spike in S face of 14" R. Pine - 44.95'
 East - centerline of trail - 25'
 S53E - spike in N face of 16" R. Pine - 43.44'
 N26E - 1/2" re-rod - 8.99'

C. 1/4 Corner, Sec. 26, T22N, R11W

Found 1" pipe +/-0.5' below grade in e-w fence & +/-1' west of n-s fence.
 N45E - spike in NW face of 11" Maple - 32.87'
 S35E - spike in NE face of 18" Maple - 21.82'
 S28W - spike in NW face of 5" Spruce - 41.15'
 West - east face of 4 3/4"x3.8' high steel fence post - 8.95'
 N52W - 1/2" re-bar & cap#45505 - 7.18'

E. 1/4 Corner, Sec. 26, T22N, R11W

Found 1 1/2" Wexford County Monument +/-0.2' below grade in monument box, +/-3.5' west of c/l n-s road.
 S84E - nail in power pole - 102.80'
 S82E - p.k. nail in cut-off telephone pole - 38.12'
 S05W - Westerly "T" of steel guardrail post - 154.83'
 S14E - S.W. Corner of concrete well pit - 159.73'
 S82W - nail in 12" Maple - 139.90'
 West - broken concrete monument - 43.53'

SW Corner, Sec. 26, T22N, R11W

Found 1 1/2" Wexford County Monument +/-1' below grade in c/l e-w road & +/-10' east of c/l trail to south.
 N70E - spike in 38" Maple - 52.18'
 S36E - spike in 15" R. Pine - 32.99'
 S12E - spike in 16" R. Pine - 33.24'
 N28W - spike in 14" R. Pine - 43.90'

S. 1/4 Corner, Sec. 26, T22N, R11W

Found 1 1/2" Wexford County Monument +/-1' below grade, in c/l e-w gravel road & in the extension of fences n-s.
 N55E - spike in 20" R. Pine - 44.14'
 S18E - spike in 28" Maple - 49.90'
 S09W - p.k. nail in corner fence post - 29.87'
 S54W - spike in 42" W. Pine - 41.66'
 N30W - spike in 10" Spruce - 45.09'

SE Corner, Sec. 26, T22N, R11W

Found 1 1/2" Wexford County Monument in monument box +/-0.2' below grade at intersection of roads.
 N76E - spike in 16" Spruce - 73.80'
 S54E - spike in 48" Maple - 69.90'
 N53W - spike in 15" R. Pine - 49.68'
 N38W - spike in 18" R. Pine - 51.39'

Joseph J. Surveyor
 Professional Surveyor No. 12345

Joe Surveying INC

1-888-555-4321
 PH. 231-555-1000 Fax. 231-555-1001
 100 MAIN ST. ANYWHERE, MI 49660

DATE: 03/02/2017

DRN BY: AOL

CHD BY: JJS

SHEET 3 OF 4

CLIENT: U.S. Forest Service

Part of Section 26,
 T22N, R11W,
 Boon Twp., Wexford Co., MI.

FB/PG:
 FS1/1-18

JOB NO.:
 78910

REPORT OF SURVEY

SPACE RESERVED FOR REGISTER OF DEEDS

CONFLICTING MONUMENTATION/ EVALUATED CORNERS:

N.W. Corner: This corner was set by Brent Clough in 2014 through the remonumentation program by doubling over a Teed witness for a 1/16th corner to the east. There was H.I. Devoe record information calling for crockery at this corner. We excavated around the found monument and also an area covering the intersection of E-W & N trails and didn't recover any evidence of the crockery. I used the position as monumented by Clough in 2014.

C-S 1/16th Corner: Excavated a 2' radius x 1' deep hole around the intersection of N-S and East fences and didn't find any pipe. The fence intersection fits a considerable stump depression N86E, 5' to the center which would be for a possible Teed witness. Found a 1/2" re-rod and cap, P.S. #25861, N84°48'58"W, 5.87' from the fence intersection. I utilized a computed location to subdivide the SW 1/4.

C. 1/4 Corner: Found a 1" pipe 0.5' below grade in E-W fence and 1' west of the N-S fence. This position would be 1.63' east of the Clough position he used in establishing the W. 1/4 Corner. It also falls 5.52' East and 0.17' South of the intersection of 1/4 lines. I used the found pipe for the C. 1/4 Corner.

C-W 1/16th Corner: We excavated a hole 2' north, 3' east, 3' west and 8' south of the computed location and didn't find any other evidence of the corner. I couldn't recover any evidence of Teed's witnesses. The computed location falls in the old N-S fence and +/-4' north of down fence to the East. I used a computed position based upon the found pipe at the C. 1/4 Corner and the remonumented W. 1/4 Corner.

N.W. 1/16th Corner: Excavated a 4' radius hole around a N-S & W fence intersection looking for a post or pipe. The fence intersection fits a ±18" diameter stump depression S45°W, 13.3' which would be a possible Teed witness. This position is +/- 3' west of a newer N-S fence. We dug at the stump depression and didn't find any wood fiber to verify the stump remains. Since I was unable to positively identify the corner position I used a computed location for the the W. 1/16th Line.

W. 1/4 Corner: This corner was established by Brent Clough in 2014 by doubling over evidence that he found at the C. 1/4 Corner and C-W 1/16th Corner. We searched this area and didn't find any other evidence. This position is +/-25' west of the centerline of a N-S trail road. There appears to have been some considerable earth disturbance in this area. I used the position as established by Clough in 2014.

W. 1/16th Corner - N. Line: Looked for Teed's witness as reference by Clough and didn't find anything definite. The computed position does fit apparent occupation north and south. I used the computed position.

W. 1/16th Corner - S. Line: Fd. 5/8" diameter rod with eyelet on the top, this iron looked like some sort of old buggy part. Teed was at this corner and took 1 witness but didn't identify the monument type. We also found a 1/2" re-rod and illegible cap 0.94' west at the computed location. To be consistent with other recovered old monumentation in this area I'm using the 5/8" rod for the position of the corner.

SECTION SUBDIVISION: This Section was computed proportionally holding the found C. 1/4 Corner. If interior corners were found within acceptable limits I honored those monuments and put a deflection at said position.

ENCROACHMENTS:

Note that County Rd. 34 curves SW away from the section line at the W. 1/16th Corner on the North Section Line. The county road transitions to a seasonal road at this location and becomes part of the NFS Trail System as it heads west. I didn't set a r/w iron at this location due to the uncertainty of r/w width at this transition

There is an ATV trail encroachment along the S. 1/16th Line in the S.W. 1/4. The trail encroaches +/-14'.

OCCUPATION/FENCES:

There is a meandering fence along the W. 1/16th Line which travels for the length of our posted line. The fence is +/- on line.

Joseph J. Surveyor
Professional Surveyor No. 12345

Joe Surveying INC
1-888-223-4235
PH. 231-555-1000 Fax. 231-555-1001
100 MAIN ST. ANYWHERE, MI 49660

DATE: 02/27/2017
DRN BY: AOL
CHD BY: JJS
SHEET 4 OF 4

CLIENT: U.S. Forest Service

Part of Section 26,
T22N, R11W,
Boon Twp., Wexford Co., MI.

FB/PG:
FS1/1-18
JOB NO.:
78910