

LAND CORNER RECORDATION CERTIFICATE
Filing Requirement of Act 74, Mich. P.A. 1970

For corners in

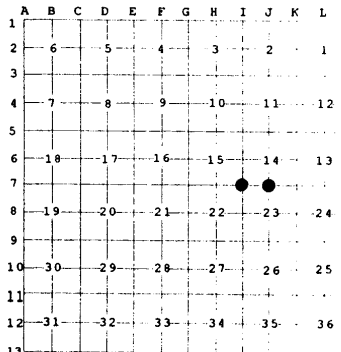
<u>Alpena</u> (County)	Located In:	Corner Code #
1. Public Land Survey	T 29N R 6E	J-7
	T 29N R 6E	I-7
2. Property Controlling in Section	S T R	
	S T R	
3. Miscellaneous Property in Sec.	S T R	
	S T R	

Register of Deeds Stamp & File Num

4. Lot No. _____, Recorded Plat _____

5. Private Claims _____

I, Carl T. Kiiskila, in a field survey on July 02, 19 97 do hereby state that under requirements of P.A. 74, Michigan P.A. of 1970, the corner points mentioned in lines 1 and 2 above were in conformance with regulations and rules therefore as required in the current manual of survey instructions of the United States Department of the Interior, Bureau of Land Management or by a decree of a Court of Law and/or that the corner points mentioned in lines 3, 4 and 5 above were in conformance with the rules of the Michigan Board of Land Surveyors or by a Decree of a Court of Law; established, re-established, monumented, recovered, found as expressed below:



NOTE: Not more than 2 corners, all in the same town and range, may be recorded on this certificate.

A. Description of original monument and accessories and/or subsequent restoration:

J-7 GLO set post.
 Wit: Beech 7" N 13° E 12 links
 Beech 5" S 11° W 18 links

I-7 GLO set post.
 Wit: Aspen 16" N 76° W 20 links
 Hemlock 6" S 68° W 35 links

Gary St. Charles, RLS #27461, March 1981 survey sketch shows an existing concrete monument.

B. Description of corner evidence found and/or method applied in restoring or reestablishing corner:

J-7 Reestablished the South quarter corner of Section 14 midway and on line between corners I-7 and K-7.

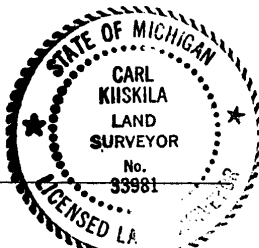
I-7 Found and accepted a 4" x 4" concrete monument presumed to be set by R.S. Scott and Associates.

C. Description of monument for corner and accessories established to perpetuate locating the position of the corner:

J-7 Set 1" x 32" pipe with aluminum DNR cap and set carsonite marker post.
 Wit: Set nail in 10" Maple S 5° W 31.12'
 Set nail in 10" Maple S 21° E 53.21'
 Set nail in 10" Oak S 85° E 41.53'
 Set nail in 10" Maple N 42° E 79.49'

I-7 Found 4" x 4" concrete monument.
 Wit: Set nail in 8" Maple S 15° E 20.78'
 Set nail in 6" Maple N 87° E 19.33'
 Set nail in 6" twin Maple N 18° W 17.03'
 Set nail in 3" Spruce N 71° W 26.92'
 Pine stump with scribes S 10° E 22.5'

Signed by Carl T. Kiiskila
 Surveyor's Michigan License No. 33981



Date 6-14-99