

MICHIGAN
DEPARTMENT OF CONSERVATION
FORESTRY DIVISION

LAND CORNER RECORD

T. 39 N.R. 3 W

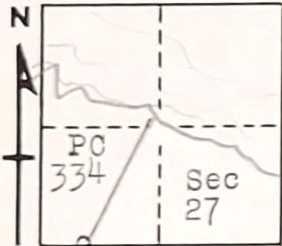
Cheboygan COUNTY

DESCRIPTION OF CORNER Closing Corner common to Sections 27-34 on SE boundary
of Private Claim #334

CORNER MONUMENT 1" pipe with 4" brass cap

DATE MONUMENT PLACED AND WITNESSED 6/30/61

WITNESSES TO CORNER.....



CIRCLE CORNER REGISTERED

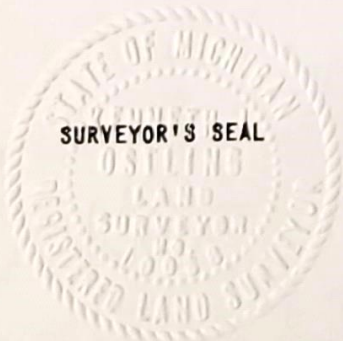
12" Spruce - N53W - 14.2 ft

7" Spruce - N86E - 28.2 ft

AND

DESCRIPTION IN DETAIL AS TO HOW CORNER WAS LOCATED AND IDENTIFIED OR RESTORED.

This corner was restored by Forestry Division survey crew while making a survey in this area. Set corner at record measurement NE from closing corner between Sections 33-34, on calculated SE boundary of Private claim. Unable to identify US BTs. This position would make the mile between 27-34 somewhat short of record, but would conform acceptably for bearing.



SIGNED *Keith J. ...*
REGISTERED LAND SURVEYOR

DATE 7/5/61

MICHIGAN
DEPARTMENT OF CONSERVATION
FORESTRY DIVISION

LAND CORNER RECORD

T. 39 N.R. 3 W

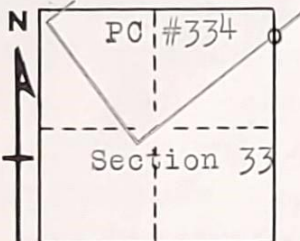
Cheboygan COUNTY

DESCRIPTION OF CORNER Closing Corner common to Sections 33-34 on SE boundary of Private Claim #334

CORNER MONUMENT 1" pipe with 4" brass cap

DATE MONUMENT PLACED AND WITNESSED 6/30/61

WITNESSES TO CORNER.....



7" Ash - S48W - 47.2 ft

5" Cedar - S52E - 50.9 ft

AND

CIRCLE CORNER REGISTERED

DESCRIPTION IN DETAIL AS TO HOW CORNER WAS LOCATED AND IDENTIFIED OR RESTORED.

This corner was restored by Forestry Division survey crew while making a survey in this area. Set corner from probable SE gov't BT stump- the only W. Pine stump in the immediate vicinity. This point checks very good for bearing and distance to section corner on south boundary of township. Too wet to discover anything by excavation. Could find no evidence of previous corner, although a 1/2" pipe set to preserve traverse information in a Doyle survey is about 73' NW. Our corner was used to control the SE boundary of private claim, and would make the claim width about 40' short of the width prescribed by the gov't description of the Private Claim.



SIGNED Kenneth Ostling DATE 7/5/61
REGISTERED LAND SURVEYOR

MICHIGAN
DEPARTMENT OF CONSERVATION
FORESTRY DIVISION

LAND CORNER RECORD

T. 38 N.R. 3 W.
T. 39 N.R. 3 W.

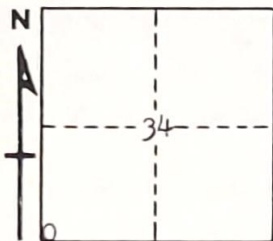
Cheboygan COUNTY

DESCRIPTION OF CORNER Section corner common to Sections 33 - 34 - 3 - 4

CORNER MONUMENT Set 1" pipe with 4" brass cap

DATE MONUMENT PLACED AND WITNESSED April 22, 1964

WITNESSES TO CORNER.....



CIRCLE CORNER REGISTERED

6" Cedar N 78 W 10.5'

6" Cedar N 55 E 36.0'

AND

DESCRIPTION IN DETAIL AS TO HOW CORNER WAS LOCATED AND IDENTIFIED OR RESTORED.

This corner was found while making a survey of this area. Found 3/4" pipe in place as previously established by unknown surveyor. Old township road grades E-W-S. Remains of two probable BTs in place.



SIGNED Kenneth Ostling DATE June 24, 1964
REGISTERED LAND SURVEYOR #10068

Cons. 4047
REV. 10/60

MICHIGAN
DEPARTMENT OF CONSERVATION
FORESTRY DIVISION

LAND CORNER RECORD

T. 38 N.R. 3 W.
T. 39 N.R. 3 W.

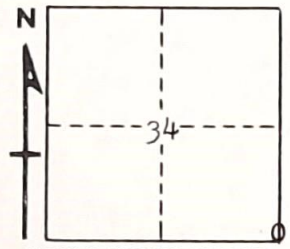
Cheboygan COUNTY

DESCRIPTION OF CORNER Section corner common to Sections 34 - 35 - 2 - 3

CORNER MONUMENT Drove 1" pipe below surface

DATE MONUMENT PLACED AND WITNESSED April 22, 1964

WITNESSES TO CORNER.....



CIRCLE CORNER REGISTERED

12" Balsam S 55 E 42.3'

7" Spruce S 54 W 40.4'

AND

DESCRIPTION IN DETAIL AS TO HOW CORNER WAS LOCATED AND IDENTIFIED OR RESTORED.
This corner was found while making a survey in this area. Found 1/2" pipe in place in N - S road and in line with old grades E and W. Appears acceptable as proper location for corner.



SIGNED Kenneth Ostling DATE June 26, 1964
REGISTERED LAND SURVEYOR #10088

Michigan

16

LAND CORNER RECORDATION CERTIFICATE
Filing Requirement of Act 74, Mich. P.A. 1970

For corners in

Cheboygan
County

Located In:

Corner Code: *I-11*

- 1. Public Land Survey T 39N R 3W I-11
- T R
- T R
- T R
- 2. Property Controlling S T R
- in Section S T R
- 3. Miscellaneous S T R
- Property in Sec. S T R

MAR 10 1988

RECEIVED FOR RECORD
of 1:05 O'Clock P M
Joanne Spray
CLERK/REGISTRAR
CHEBOYGAN COUNTY, MICHIGAN

Register of Deeds Stamp & File Number

- 4. Lot No. _____ Recorded Plat _____
- 5. Private Claims _____

	A	B	C	D	E	F	G	H	I	J	K	L	M
2	6	5	4	3	2	1							
3													
4	7	8	9	10	11	12							
5													
6	18	17	16	15	14	13							
7													
8	19	20	21	22	23	24							
9													
10	30	29	28	27	26	25							
11													
12	31	32	33	34	35	36							
13													

I, James H. Granger, in a field survey on March 9, 19 88, do hereby certify that under requirements of P.A. 74, Michigan P.A. of 1970, the corner points mentioned in lines 1 and 2 above were in conformance with regulations and rules therefore as required in the current manual of survey instructions of the United States Department of the Interior, Bureau of Land Management or by a decree of a Court of Law and/or that the corner points mentioned in lines 3, 4 and 5 above were in conformance with the rules of the Michigan Board of Land Surveyors or by a Decree of a Court of Law; established, re-established, monumented, re-monumented, recovered, found as expressed below:

NOTE: Not more than 4 corners, all in the same town and range, may be recorded on this certificate.

A. Description of original monument and accessories and/or subsequent restoration:

- 1" Axle
- N 10 W 16" Cedar 29.95'
- S 05 E 15" W. Birch 32.10'
- N 48 E Pine Stump 31.25'
- N 55 E 20" Aspen 45.64'

B. Description of corner evidence found and/or method applied in restoring or reestablishing corner:

- 1" Axle
- N 8 W 16" Cedar 29.94'
- S 1 E 15" W. Birch 32.13'

C. Description of monument for corner and accessories established to perpetuate locating the position of the corner:

- 1" Axle
- N 08 W 16" Cedar 29.94'
- S 01 E 15" W. Birch 32.13'
- N 26 E 20" Tr. W. Birch 20.10'
- S 56 E 8" W. Birch 17.73'

LIBER: 001 PAGE: 340

Signed by James H. Granger
Surveyor's Michigan License No. 16041



March 9, 1988

LAND CORNER RECORDATION CERTIFICATE

FILING REQUIREMENT OF ACT 74, MICH. P.A.1970

17

FOR CORNERS OF—:	LOCATED IN—:	CORNER CODE NUMBER
1. PUBLIC LAND SURVEY _____ T. <u>39</u> S., R. <u>3</u> E. <u>W.</u>		<u>I-11, J-11,</u>
2. PROPERTY CONTROL- ING IN SECTION _____ T. _____ N. S., R. _____ E. W.		
3. MISCELLANEOUS PROPERTY IN SECTION _____ T. _____ N. S., R. _____ E. W.		
4. LOT NO. _____, RECORDED PLAT _____		
5. PRIVATE CLAIMS _____		

State of Michigan
 County of Cheboygan
 Received for Record
 (AM)
 FEB 23 1983 At 10:30 PM
Jean Simonson
 Register of Deeds
 REGISTER OF DEEDS STAMP AND
 FILING NUMBER

I, Ronald R. Bischer, do hereby certify that under requirements of P.A. 74, Michigan P.A. of 1970, the corner points mentioned in lines 1 and 2 above were, in a field survey on Oct. 21, 1980, established, re-established, monumented, re-monumented, recovered or restored as expressed below and in conformance with regulations and rules therefore as required in the current manual of survey instructions of the United States Department of the Interior, Bureau of Land Management or by a decree of a court of law. Furthermore, that the corner points mentioned in lines 3, 4 and 5 above were, in a field survey on _____, 19____, found, recovered, restored, established or re-established as expressed below and in conformance with the rules of the Michigan State Board of Registration for Land Surveyors or, by a Decree of a Court of law:

A. Description of original monument and accessories and/or subsequent restoration:
 I-11 Doyle Fd. 1" Axle (1947) P-11 1½" Iron Set by Doyle (1947)
 N12°W 29.30 10" Cedar
 N50°E 45' 10" Aspen
 S20°E 31.6' 11" W. Birch

B. Description of corner evidence found and/or method applied in restoring or re-establishing corner:
 I-11 1" Axle Shaft J-11 1¼" Iron Bar

C. Description of monument for corner and accessories established to perpetuate locating the position of the corner:
 I-11 1" Axle J-11 1¼" Iron
 N10°W 29.95' 16" Cedar N28°E 27.37' Cedar Stump
 N48°E 31.25' Pine Stump N64°E 37.80' 11" Cedar
 N55°E 45.64' 20" Aspen N85°E 21.81' 12" Cedar
 S05°E 32.10' 15" W. Birch

SIGNED BY Ronald R. Bischer DATE October 7, 1982

SURVEYOR'S MICHIGAN REGISTRATION NO. 22428 (SEAL)

FOR STATE AND UNITED STATES AGENCIES:

SIGNED BY _____ DATE _____
CHIEF OF SURVEY PARTY

APPROVED AND SIGNED BY _____ DATE _____
MICHIGAN REGISTERED LAND SURVEYOR (SEAL)

LIBER - 001 PAGE 305

SURVEYOR'S MICHIGAN REGISTRATION NO. _____