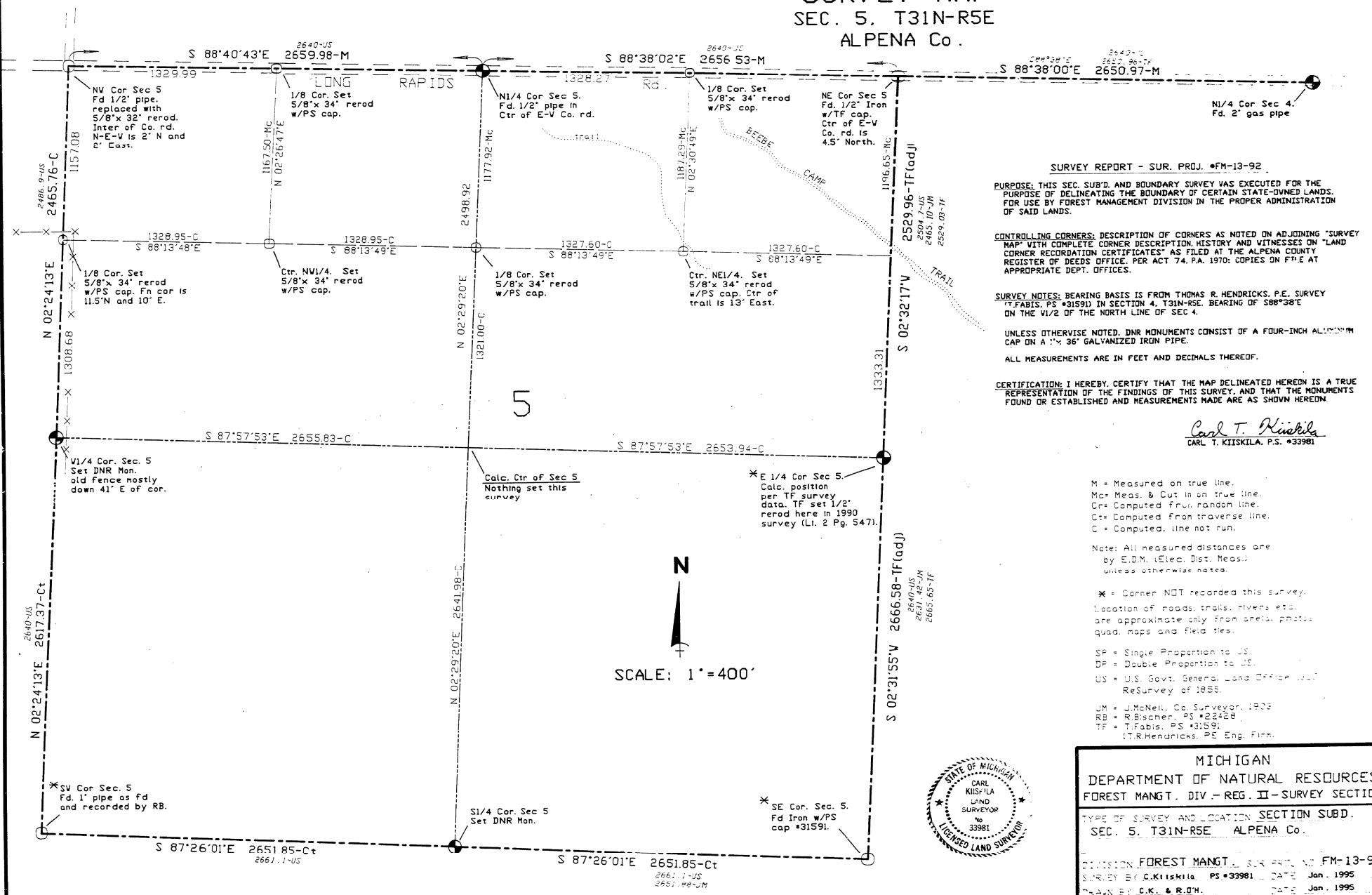


# SURVEY MAP

## SEC. 5, T31N-R5E

### ALPENA Co.



**SURVEY REPORT - SUR. PROJ. #FM-13-92**

**PURPOSE:** THIS SEC. SUB'D. AND BOUNDARY SURVEY WAS EXECUTED FOR THE PURPOSE OF DELINEATING THE BOUNDARY OF CERTAIN STATE-OWNED LANDS, FOR USE BY FOREST MANAGEMENT DIVISION IN THE PROPER ADMINISTRATION OF SAID LANDS.

**CONTROLLING CORNERS:** DESCRIPTION OF CORNERS AS NOTED ON ADJOINING "SURVEY MAP" WITH COMPLETE CORNER DESCRIPTION, HISTORY AND WITNESSES ON "LAND CORNER RECORDATION CERTIFICATES" AS FILED AT THE ALPENA COUNTY REGISTER OF DEEDS OFFICE, PER ACT 74, P.A. 1970; COPIES ON FILE AT APPROPRIATE DEPT. OFFICES.

**SURVEY NOTES:** BEARING BASIS IS FROM THOMAS R. HENDRICKS, P.E. SURVEY #7, FABIS, PS #31591 IN SECTION 4, T31N-R5E, BEARING OF S88°38'E ON THE 1/2 OF THE NORTH LINE OF SEC. 4.

UNLESS OTHERWISE NOTED, DNR MONUMENTS CONSIST OF A FOUR-INCH ALUMINUM CAP ON A 1" x 36" GALVANIZED IRON PIPE.

ALL MEASUREMENTS ARE IN FEET AND DECIMALS THEREOF.

**CERTIFICATION:** I HEREBY CERTIFY THAT THE MAP DELINEATED HEREON IS A TRUE REPRESENTATION OF THE FINDINGS OF THIS SURVEY, AND THAT THE MONUMENTS FOUND OR ESTABLISHED AND MEASUREMENTS MADE ARE AS SHOWN HEREON.

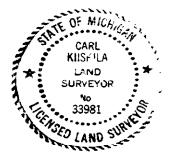
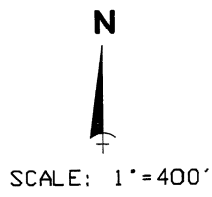
*Carl T. Kiiskila*  
CARL T. KIISKILA, P.S. #33981

M = Measured on true line.  
 Mc = Meas. & Cut in on true line.  
 Cr = Computed from random line.  
 Ct = Computed from traverse line.  
 C = Computed, line not run.

Note: All measured distances are by E.D.M. (Elec. Dist. Meas.) unless otherwise noted.

\* - Corner NOT recorded this survey.  
 Location of roads, trails, rivers, etc. are approximate only from aerial photos, quad. maps and field files.

SP = Single Proportion to US.  
 DP = Double Proportion to US.  
 US = U.S. Govt. General Land Office 1854 ReSurvey of 1855.  
 JN = J. McNeil, Co. Surveyor, 1923  
 RB = R. Bischoff, PS #22428  
 TH = T. Fabis, PS #31591  
 (T.R. Hendricks, PE Eng. Firm.)



MICHIGAN DEPARTMENT OF NATURAL RESOURCES FOREST MANGT. DIV. - REG. II - SURVEY SECTION
TYPE OF SURVEY AND LOCATION SECTION SUBD. SEC. 5, T31N-R5E ALPENA Co.
DIVISION FOREST MANGT. SUR. PROJ. NO. FM-13-92 SURVEY BY C.K. Kiiskila, PS #33981 DATE Jan. 1995 DRAWN BY C.K. & R.D.H. DATE Jan. 1995 FIELD WORK BY C.K., J.R., & L.T. Inter. March '92 to Oct '94

PLAN No. R-4-N