

8

MICHIGAN
DEPARTMENT OF CONSERVATION
FORESTRY DIVISION

LAND CORNER RECORD

T. 25 NR. 9E

Alcona COUNTY

DESCRIPTION OF CORNER Section corner common to Sections 28,29,32,33

DESCRIPTION OF CORNER MONUMENT 1" pipe, with 4" brass cap

WITNESSES TO CORNER

8" B. Oak - N44W - 92½ links

7" R. Oak - S60W - 47 links

5" W. Oak - S70E - 57 links

DESCRIPTION IN DETAIL AS TO HOW CORNER WAS LOCATED AND IDENTIFIED OR RESTORED.

This corner was established by double proportionate measurement between corners 2 miles north, 1 mile south, 1 mile east, 2 miles west by Forestry Division survey crew. Could make no positive identification of government corner, although our point checks good with swamp edges east, west, north and possibly south which is quite indefinite.

Corner placed and witnessed May 8, 1958.



SIGNED *Kenneth J. Ostling*
REGISTERED LAND SURVEYOR

DATE 6/5/58

MICHIGAN
DEPARTMENT OF CONSERVATION
FORESTRY DIVISION

LAND CORNER RECORD

T. 25. NR. 9. E.

Alcona COUNTY

DESCRIPTION OF CORNER South 1/8 corner common to sections 28 and 29

DESCRIPTION OF CORNER MONUMENT 1"x24" pipe

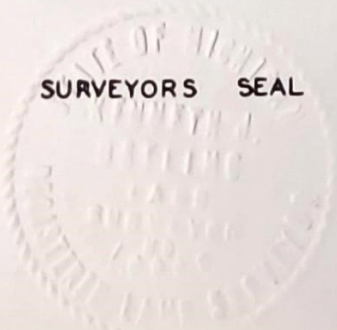
WITNESSES TO CORNER

BT 7" J. Pine - S 54 E - 82 links

DESCRIPTION IN DETAIL AS TO HOW CORNER WAS LOCATED AND IDENTIFIED OR RESTORED.

This corner was established by proportionate measurement by Forestry Division survey crew. Falls in open marsh, NW of small J. Pine island. Set mid-point, on line between section corner south and 1/4 corner north.

Corner was placed and witnessed May 27, 1958.



SIGNED Kenneth J. O'Connell
REGISTERED LAND SURVEYOR

DATE 6/5/58

MICHIGAN
DEPARTMENT OF CONSERVATION
FORESTRY DIVISION

LAND CORNER RECORD

T. 25 NR. 9 E.

Alcona COUNTY

DESCRIPTION OF CORNER 1/4 corner common to Sections 28 and 29

DESCRIPTION OF CORNER MONUMENT 1" pipe with 4" brass cap

WITNESSES TO CORNER

6" Aspen S 18 E 35 1/2 links

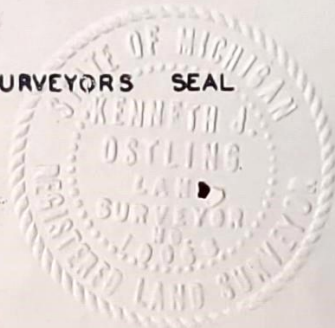
8" Aspen S 70 W 30 links

DESCRIPTION IN DETAIL AS TO HOW CORNER WAS LOCATED AND IDENTIFIED OR RESTORED.

This corner was established by Forestry Division survey crew while making a partial resurvey of this township. Corner was established by proportionate measurement between section corners, since no positive identification of the government witnesses could be made.

Corner was placed and witnessed May 27, 1958.

SURVEYORS SEAL



SIGNED *Kenneth J. Ostling*
REGISTERED LAND SURVEYOR

DATE 6/15/58

MICHIGAN
DEPARTMENT OF CONSERVATION
FORESTRY DIVISION

LAND CORNER RECORD

T 25 NR 9 E

Alcona COUNTY

DESCRIPTION OF CORNER North 1/8 corner common to Sections 28 and 29

DESCRIPTION OF CORNER MONUMENT 1"x24" pipe

WITNESSES TO CORNER

BT 6" Maple N 29 E 24 links

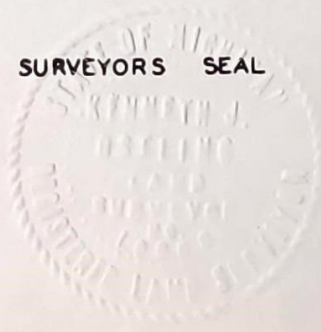
BT 7" R. Oak S 60 W 46 links

DESCRIPTION IN DETAIL AS TO HOW CORNER WAS LOCATED AND IDENTIFIED OR RESTORED.

This corner was established by proportionate measurement, mid-point on line, between section corner north and 1/4 corner south, by Forestry Division survey crew while on a survey project in this area.

Corner was placed and witnessed May 27, 1958.

SURVEYORS SEAL



SIGNED Kenneth J. Ostling
REGISTERED LAND SURVEYOR

DATE 6/5/58

MICHIGAN
 DEPARTMENT OF CONSERVATION
 FORESTRY DIVISION

LAND CORNER RECORD

T 25 NR 9E

----- Alcona ----- COUNTY

DESCRIPTION OF CORNER Section corner common to Sections 20,21,28,29

DESCRIPTION OF CORNER MONUMENT -----

WITNESSES TO CORNER -----

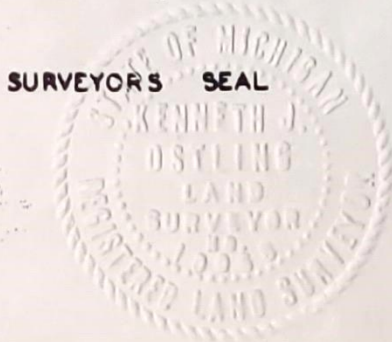
12" R. Oak - S50W - 38 links -----

8" R. Oak - N44W - 90 $\frac{1}{2}$ links -----

DESCRIPTION IN DETAIL AS TO HOW CORNER WAS LOCATED AND IDENTIFIED OR RESTORED.

This corner was established by double proportionate measurement between corners 1 mile north, 1 mile east, 2 miles south and 2 miles west by Forestry Division survey crew. Could make no identification of original BT's. This point conforms more closely to the swamp edge north than a square concrete monument which is 1.02 chain south and 25 links east of our corner, by unknown surveyor and not of record. Did not seem justified in accepting this corner which makes the mile north 81.00 at the expense of the two miles south, when nothing definite could be found for government evidence.

Corner placed and witnessed May 9, 1958.



SIGNED Kenneth J. Ostling
 REGISTERED LAND SURVEYOR

DATE 6/6/58