

MAP OF PART OF
T25NR9E
ALCONA CO MICH
FOR
FORESTRY DIVISION
DEPT. OF CONSERVATION
1958

MINUTES OF SURVEY
7-25-58 8-9-E
149

The purpose of this survey was to locate or establish the land corners necessary for the proper administration of the state lands in this township.

The county records contain very little information concerning previous surveys in the SW 1/4 of this township. Several corners of the perimeter of the SW 1/4 of this township were located, and, though not of record, could be verified to some extent by the calls of the government field notes and were generally accepted in this survey. The following is a description of the corners found and used:

1. Corner to sections 18 and 19 on west boundary. Found a 1" iron nail about 1' west of center of road, which is presumed to perpetuate the corner as established in a road survey by St. Chappell, Sw. in 1904.
2. Corner to sections 17, 18, 19, and 20. Found a 1" pipe in centerline road No. 1, in line with fences east and west, possibly by Chappell.
3. Corner to sections 16, 17, 20, and 21. Found 1" cast pipe in place, of record by A. J. Freer in 1939 as set from original 3/4".
4. Corner to sections 21, 22, 27, and 28. Found a 1" concrete monument which checks the center of the road east as recorded by Freer in a highway survey in 1910. A plat corner 20.00 chains east appears to be tied to this corner.
5. Corner to sections 27, 28, 33, and 34. Found a 1" concrete monument and very old post. Recorded by Freer in 1910 as being 23 rods west of road centerline and checks this distance.
6. Corner to 33 and 34 on south boundary. Found a 3/4" pipe in centerline of road on county line, 4 rods west of centerline of road, as recorded by Freer in 1910. Check swamp edge west and an old fence roll east north from corner.
7. Corner to sections 31 and 32 on south boundary. Found 1" pipe in centerline of road which checks road to stream east. Appears to have been used to stake 1/2 chain parcels SW of this corner.

A 1" square concrete monument is in place near the corner to sections 20, 21, 29, and 30, set by unknown surveyor. Could not determine how it was established since the location made the mile north over a chain too low at the expense of the miles to the north. Could find no support for this corner. It established the true corner by proportionate measure, which checks the swamp edge north much more closely.

The west boundary presented a problem, since no corner could be found south of the corner to 18-19. By solar observation, the centerline of the county road on the west boundary, which is without deflection for 1/2 mile, was found to bear S 69° 04' W, from the W 1/4 corner of Section 11 north. Although I could find no government evidence to support any of the corners, I believed could find evidence that the boundary was not in the centerline of the road. It did not seem sufficient reason for upsetting the corners of a previous survey, since this seems to be the case in other parts of the township. Taking the road as the best available evidence of the position of the west boundary, the W 1/4 corner to Section 31 was established in centerline for longitude, at proportional distance between the county line north and the corner to 18-19 north. The corners north were subsequently established on a right line, at proportionate measure, all falling in center of county road.

A deflection of 1° 21' to the east is evident at the W 1/4 corner of Section 31, and being inconsistent with the record of the government survey for the west boundary, seems without explanation. The intersection of the centerline of the county roads K-M appeared to be the best evidence for the "true" corner, supported by occupation NW and SW of the intersection. A brushed line north and an exact measurement east to a small stream. The only contradiction to this position being a slightly lower than record distance west to the base of slope at the river valley, and to the river itself. This did not seem sufficient reason for upsetting the corners indicated by occupation and supported by a stream east, so the township corner was established at the intersection of the centerline of the county roads, which is in line over the two corners found on the south boundary.

The interior corners of the SW 1/4 of this township, as indicated on the map, were then re-established by proportionate measurement, using corners on the perimeter of the SW 1/4 as control. I think it safe to say that virtually all the corners re-established in this survey can be found to conform very acceptably with the record to the nearest natural monumentation, even though there is considerable difference in the total length of some of the lines. It would appear that the government survey was, at least, consistently inaccurate.

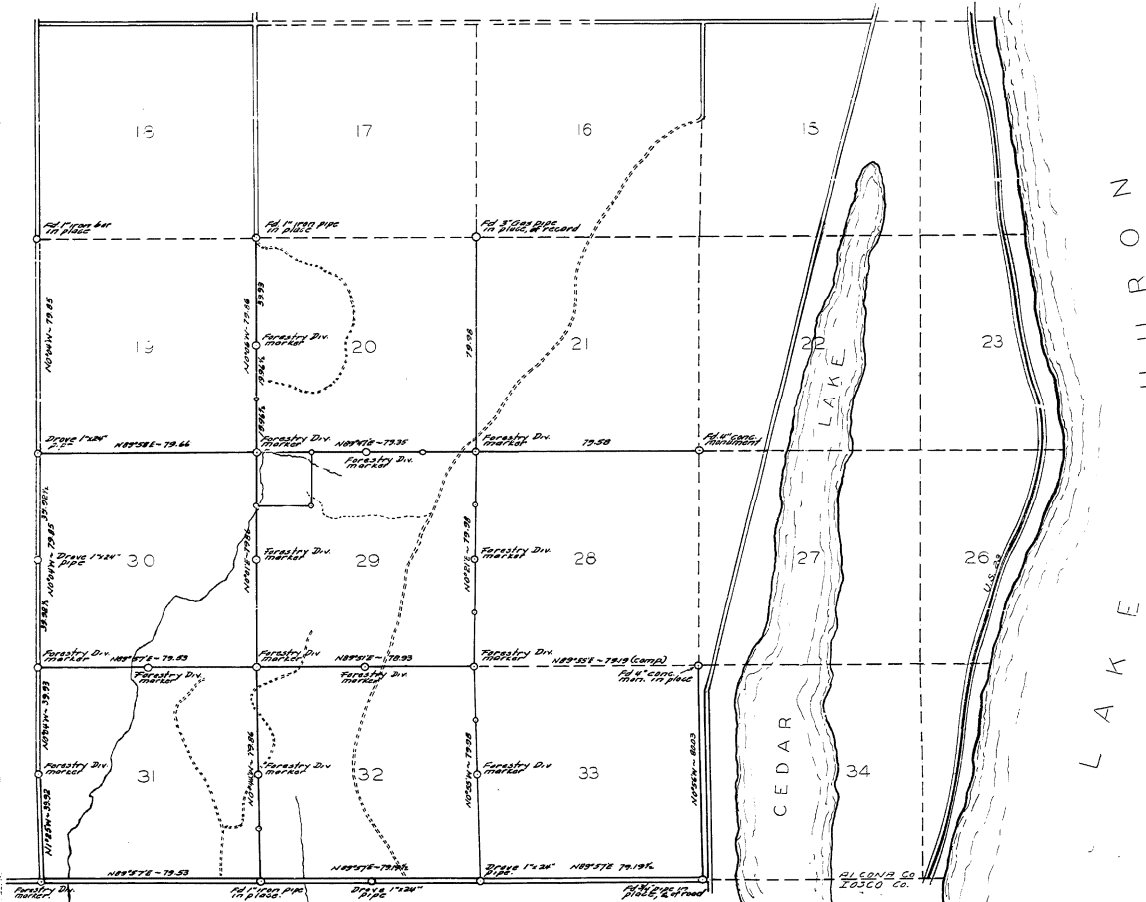
Evidence of a previous compass line between sections 19 and 20 was found, but could not be supported. It would appear that the line was run south from the corner to sections 17, 18, 19, and 20, without regard for the magnetic variation (which is about 1° at this time), and as a result the line departs considerably to the east of the true line.

The center of the NW 1/4 of Section 29 was established at a calculated bearing and distance from the 1/2" corner north and west. All bearings shown on the attached map are related by transit angles to a solar observation on the west line of Section 17. The corners were established by offsets from the random.

See corner record for further information on individual corners.



K. J. Ostling
Registered Land Surveyor #10068
Forestry Division
Department of Conservation



SURVEY AND MAP BY
K. J. OSTLING, REG. LAND SUR.
FORESTRY DIVISION

PLAN No. R-3-B 1-2