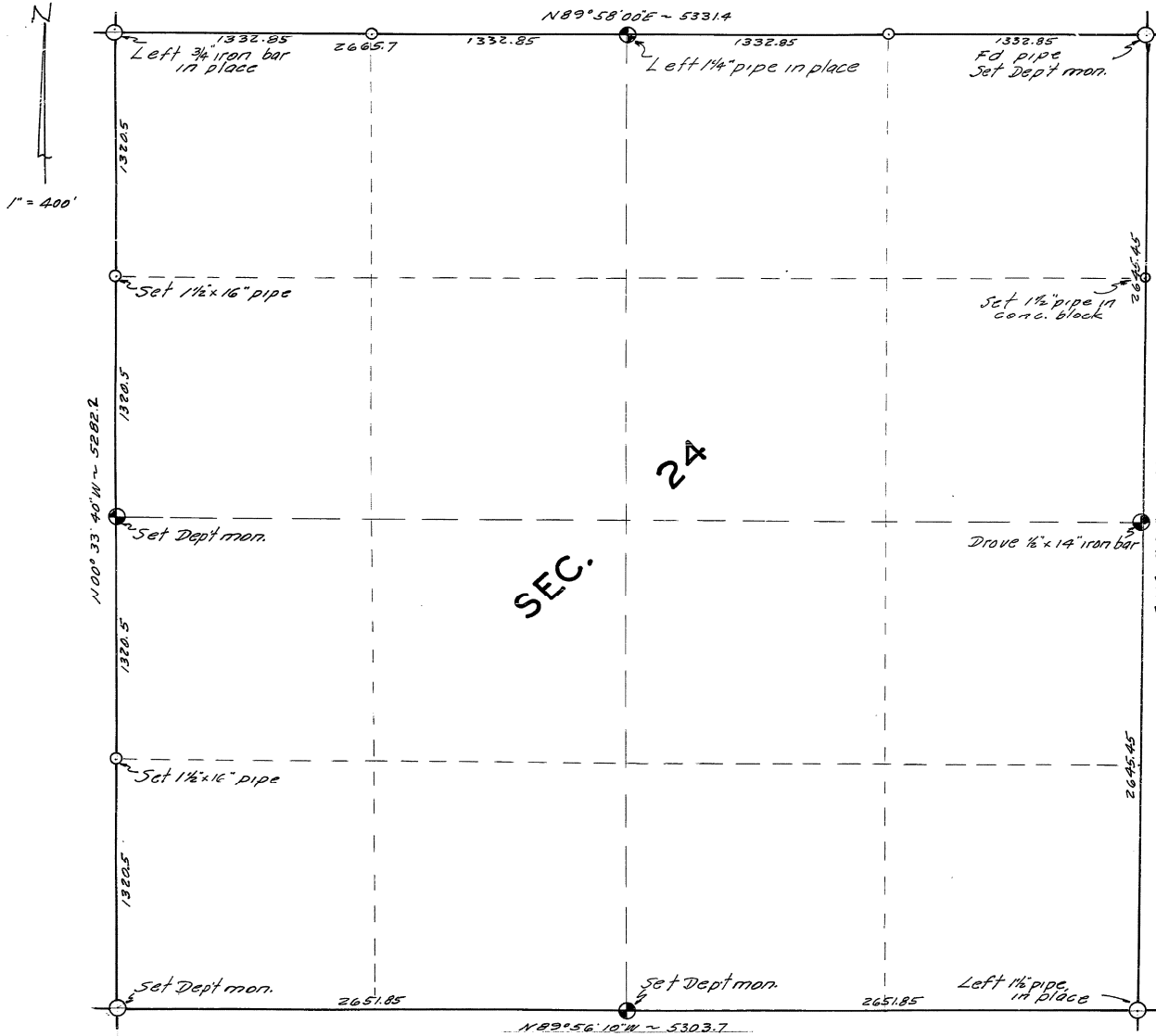


SURVEY MAP OF SECTION 24, T28N, R2E

OSCODA CO.

MINUTES OF SURVEY



PURPOSE:

THE RETRACEMENT OF THIS TOWNSHIP WAS REQUESTED TO LOCATE OR ESTABLISH THE CORNERS NECESSARY TO PROPERLY ADMINISTER THE STATE LANDS SITUATE THEREIN.

GENERAL SURVEY INFORMATION:

THIS TOWNSHIP CONTAINS A GREAT NUMBER OF SITUATIONS WHERE TITLE IDENTIFICATION IS DIFFICULT BECAUSE OF CONFLICTING CORNERS, WHICH HAVE RESULTED FROM VARIOUS SURVEYS CONDUCTED THEREIN. THE ORIGINAL SURVEY WAS POORLY EXECUTED; IN FACT, NON-EXISTENT IN SOME INSTANCES. EARLY SURVEY BY COUNTY SURVEYOR RANDALL AND SEELEY RECOVERED SOME EVIDENCE OF THE ORIGINAL SURVEY AND RESTORED A NUMBER OF CORNERS BY A QUESTIONABLE SYSTEM OF INDEPENDENT RESURVEY. SUBSEQUENT SURVEYS BY VARIOUS LOCAL SURVEYORS SAW FIT TO ACCEPT, CHALLENGE, OR IGNORE PREVIOUS LOCATIONS, RESULTING IN A CONFUSING SITUATION WHERE 2, OR SOMETIMES 3, MONUMENTS PURPORT TO MARK THE CORNERS.

THIS SURVEY ATTEMPTS TO VALIDATE, PERPETUATE, OR RESTORE THE VARIOUS CORNERS, BASED ON A WEIGHTED CONSIDERATION OF ORIGINAL EVIDENCE, COUNTY SURVEYOR RECORDS, SUBSEQUENT SURVEY, OCCUPATION AND INTENT, AND LOCAL ACCEPTANCE.

SURVEY NOTES:

ALL BEARINGS SHOWN HEREON ARE RELATED BY TRANSIT ANGLES TO THE TRUE MERIDIAN, AS DETERMINED BY SOLAR OBSERVATION. MEASUREMENTS ARE IN FEET AND DECIMALS THEREOF. DEPT. MON. IS 1" PIPE WITH 4" ALUM. CAP. SEE DNR LAND CORNER RECORDS FOR FURTHER IDENTIFICATION OF CORNERS.

CORNER EVALUATION:

- NW CORNER - Originally by Seeley 1916, restored by Caldwell 1966.
- NE CORNER - Originally restored by Seeley in 1916 survey from USBT. Accepted all subsequent surveys.
- SE CORNER - Previously restored by Schaaf 1935, and found acceptable in subsequent surveys.
- SW CORNER - Found Seeley stake bottom from his record. Nothing else evident.
- N $\frac{1}{2}$ - Originally by Seeley 1915. Used in subsequent surveys.
- E $\frac{1}{2}$ - Set by proportionate measurement.
- S $\frac{1}{2}$ - Set midpoint on line, between section corners.
- W $\frac{1}{2}$ - Set by proportionate measurement.

Kenneth J. Ostling
KENNETH J. OSTLING, RLS #10068

DEPT. OF NATURAL RESOURCES ENGINEERING DIVISION - REGION 2
SECTION BOUNDARY SECTION 24, T28N, R2E OSCODA CO.
FOR: FORESTRY DIVISION
SURVEY BY <u>Kenneth J. Ostling PLS.</u>
MAP BY <u>V. LaDuke, R.J.O.</u>
DATE <u>December 1969</u>
SURVEY PROJECT NO. <u>69-32-C</u>
FIELD <u>BARRITT, LADUKE, ANNIS.</u>