

LAND CORNER RECORDATION CERTIFICATE

FILING REQUIREMENT OF ACT 74, MICH. P.A.1970

FOR CORNERS OF--:	LOCATED IN--:	CORNER CODE NUMBER
1. PUBLIC LAND SURVEY _____	T. 28 N. <input checked="" type="radio"/> , R. 1 E. <input checked="" type="radio"/>	G-11; G-12; G-13
2. PROPERTY CONTROLLING IN SECTION 34 _____	T. 28 N. <input checked="" type="radio"/> , R. 1 E. <input checked="" type="radio"/>	10
3. MISCELLANEOUS PROPERTY IN SECTION _____	T. _____ S., R. _____ W.	
4. LOT NO. _____, RECORDED PLAT _____		
5. PRIVATE CLAIMS _____		

REGISTER OF DEEDS STAMP AND FILING NUMBER

I, Kenneth J. Ostling do hereby certify that under requirements of P.A. 74, Michigan P.A. of 1970, the corner points mentioned in lines 1 and 2 above (identified with circles on index code diagram - over) were, in a field survey on July 22, 1974, established, re-established, monumented, re-monumented, recovered or restored as expressed below and in conformance with regulations and rules therefore as required in the current manual of survey instructions of the United States Department of the Interior, Bureau of Land Management or by a decree of a court of law. Furthermore, that the corner points mentioned in lines 3, 4 and 5 above were, in a field survey on _____ 19____, found, recovered, restored, established or re-established as expressed below and in conformance with the rules of the Michigan State Board of Registration for Land Surveyors or, by a Decree of a Court of law:

A. Description of original monument and accessories and/or subsequent restoration:

B. Description of corner evidence found and/or method applied in restoring or re-establishing corner:

- G-11 Found RR spike in center of N-S blacktop, which was apparently used in other previous surveys.
- G-12 Set by proportionate measurement between section corners. No previous corner.
- G-13 Found 1 1/4" pipe apparently used by Hinning and others in previous surveys. Closing corner for Sections 3 and 4, T. 27 N., R. 1 E., is 26.7' west.
- 10 Set corner by standard survey procedure for the subdivision of sections.

C. Description of monument for corner and accessories established to perpetuate locating the position of the corner:

G-11	G-12	G-13
RR spike in $\text{\textcircled{C}}$ blacktop road	DNR monument	1 1/4" pipe
6" J. Pine S60°E 61.4	11" Tamarack N30°E 7.4	*8" J. Pine N10°E 63.3
9" J. Pine S40°W 72.1	12" W. Pine N55°E 29.9	*J. Pine N58°W 106.3
*P. pole S45°E 46.8	12" Tamarack N77°W 20.5	*6" R. Pine Stp. N23°E 22.4
*Guy pole N53°E 45.0		*Henning NBT's
*Old NBT's	10	
	2 1/2' of 1 1/4" pipe	
	12" J. Pine S13°E 34.9	
	6" J. Pine S83°E 31.3	

SIGNED BY Kenneth J. Ostling DATE 11-1-76

SURVEYOR'S MICHIGAN REGISTRATION NO. 10068

FOR STATE AND UNITED STATES AGENCIES:

SIGNED BY _____ DATE _____

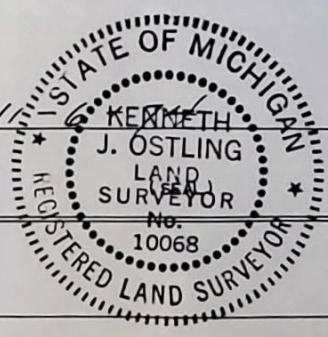
CHIEF OF SURVEY PARTY

APPROVED AND SIGNED BY _____ DATE _____

MICHIGAN REGISTERED LAND SURVEYOR

(SEAL)

SURVEYOR'S MICHIGAN REGISTRATION NO. _____ OSCODA COUNTY



LAND CORNER RECORDATION CERTIFICATE

Filing Requirement of Act 74, Mich. PA 1970



For Corners In:
 OSCODA
 (County)

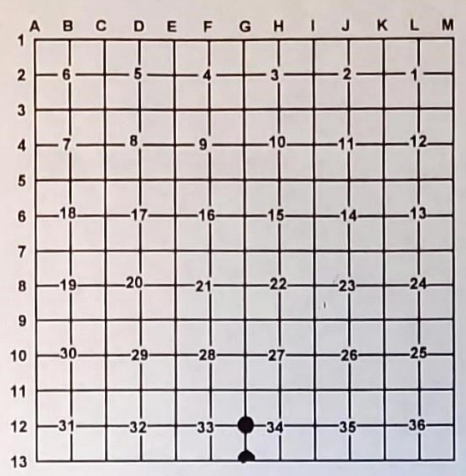
	Located In		Corner Code #
	G.Wood Twp.		
1. Public Land Survey	T	28N R 01E	G-12
	T	28N R 01E	G-13
2. Property Controlling in Section	S	T	R
	S	T	R
3. Miscellaneous Property in Section	S		
	S		
4. Lot No: _____	Recorded Plat: _____		
5. Private Claims: _____			

JERI WINTON
 OSCODA COUNTY
 REGISTER OF DEEDS
 04/16/2013 10:49:53AM
 FEE: \$14.00
 PAGES: 1 RCPT#: 19667
 LC-13005 CORNER RECORDATION

Register of Deeds Stamp & File Number

I, Matthew S. Dontz, in a field survey on June 11, 2012 do hereby state that under requirements of PA 74, Michigan PA of 1970, the corner points mentioned in lines 1 and 2 above were in conformance with regulations and rules therefore as required in the current manual of survey instructions of the United States Department of the Interior, Bureau of Land Management or by a decree of a Court of Law and/or that the corner points mentioned in lines 3, 4 and 5 above were in conformance with the rules of the Michigan Board of Land Surveyors or by a Decree of a Court of Law; established, re-established, monumented, recovered, found as expressed below:

NOTE: Not more than 2 corners, all in the same town and range, may be recorded on this certificate.



A. Description of original monument and accessories and/or subsequent restoration:

G-12 - Quarter corner comm. to sections 33 & 34, T28N,R01E **G-13** - Section cor. comm. to sections 33 & 34, T28N,R01E

1993 - Remon L.C.R.C. - L.3, p.224 - Larry G. Beauregard, P.S. #18654 - Fnd. DNR std. mon. 2'+/- above gr. & wits by Kenneth Ostling. N77°W 21.1' 13" Tamarack; N30°E 7.9' 13" Tamarack; S60°W 26.82' 10" Tamarack; S35°W 13.16' 4" Tamarack

1993 - Remon L.C.R.C. - L.3, p.225 - Larry G. Beauregard, P.S. #18654 - Fnd. 1 1/4" pipe 2" below road surface set by John Randall Co. Surveyor in 1884. N15°E 6" J. Pine 67.45'; N85°E P. Pole 209.45'; N75° P. Pole 159.50'; N35°E 6" J. Pine 72.30'; West 1 1/4" pipe 26.70' closing cor. for Sec. 3 & 4 T27N, R1E

B. Description of corner evidence found and/or method applies in restoring or re-establishing corner:

G-12 - Quarter corner comm. to sections 33 & 34, T28N,R01E **G-13** - Section cor. comm. to sections 33 & 34, T28N,R01E

Found State of Michigan monument per Ostling's Survey Map & L.C.R.C. in 1974 and Remon L.C.R.C. - L.3, p.224. Lowered monument 1ft and added one NBT. Accepted found monument as a careful and faithful establishment of the position of the corner. Found no other evidence to dispute the location for the corner.

Found 1 1/4" piper per 1884 county surveyor record and Remon L.C.R.C. - L.3, p.225. Corner falls 4' north of E-W c/l gravel county road and 24' east of gravel county road south. Lowered pipe and added DNR aluminum cap to pipe. Accepted found pipe as perpetuation of the original corner. Found no other evidence to dispute the location for the corner.

THIS CORNER WAS NEVER SET DUE TO THE FRAUDULENT SURVEY OF T28N, R1E, DOCUMENTED BY PREVIOUS CO. SURVEYORS.

THIS CORNER WAS NEVER SET DUE TO THE FRAUDULENT SURVEY OF T28N, R1E, DOCUMENTED BY PREVIOUS CO. SURVEYORS. IT WAS FIRST ESTABLISHED BY JOHN RANDALL IN 1884.

C. Description of monument for corner and accessories established to perpetuate locating the position of the corner:

G-12 - Quarter corner comm. to sections 33 & 34, T28N,R01E **G-13** - Section cor. comm. to sections 33 & 34, T28N,R01E

4" dia. stamped aluminum State of MI cap on 1"x3' pipe. 1 1/4" iron pipe with 4" dia. aluminum stamped DNR cap.

Wit: *N25°E 8.32' to set N&T on E side 16" Tamarack
 *S50°W 26.85' to fd. nail on SE side 14" Tamarack
 *N80°W 21.04' to fd. nail on S side 16" Tamarack
 N30°W 44.75' to set N&T on N side 5" B. Fir
 Set Blue Carsonite Post 1' North

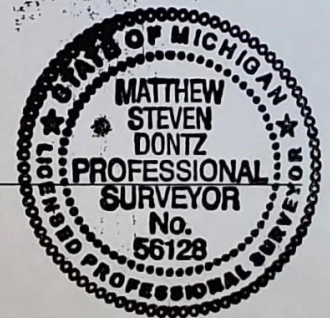
Wit: N61°E 40.52' to set N&T on SE side 7" R. Oak
 S14°E 77.45' to fd. N&T on W side 13" J. Pine
 S58°W 81.37' to fd. nail on NW side 11" J. Pine
 N64°W 28.34' to face of 2" pipe for road sign
 S89°W 26.70' to fd. OCM (c.c.) NE cor. sec.4, T27N,R1W
 Set Blue Carsonite Post 33' North

* Witness of previous record.

Signed by: Matthew S. Dontz
 Surveyor's Michigan License No.: 56128

Date: 3-21-2013

RECEIVED APR 12 2013



LAND CORNER RECORDATION CERTIFICATE

Filing Requirement of Act 74, Mich. PA 1970

For Corners In: OSCODA (County) Located In G.Wood Twp. Corner Code # 1. Public Land Survey T 28N R 01E E-11 T 28N R 01E G-11 2. Property Controlling in Section S T R S T R 3. Miscellaneous Property in Section S S 4. Lot No: Recorded Plat: 5. Private Claims:

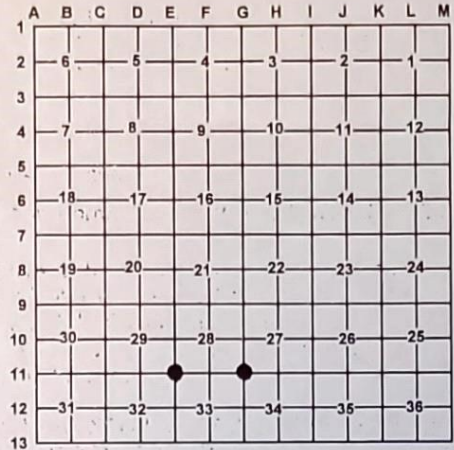


JERI WINTON OSCODA COUNTY REGISTER OF DEEDS 04/16/2013 10:49:56AM FEE: \$14.00 PAGES: 1 RCPT#: 19667 LC-13008 CORNER RECORDATION

Register of Deeds Stamp & File Number

I, Matthew S. Dontz, in a field survey on June 11, 2012 do hereby state that under requirements of PA 74, Michigan PA of 1970, the corner points mentioned in lines 1 and 2 above were in conformance with regulations and rules therefore as required in the current manual of survey instructions of the United States Department of the Interior, Bureau of Land Management or by a decree of a Court of Law and/or that the corner points mentioned in lines 3, 4 and 5 above were in conformance with the rules of the Michigan Board of Land Surveyors or by a Decree of a Court of Law; established, re-established, monumented, recovered, found as expressed below:

NOTE: Not more than 2 corners, all in the same town and range, may be recorded on this certificate.



A. Description of original monument and accessories and/or subsequent restoration:

E-11- Section cor. comm. to sec.'s 28,29,32, & 33, T28N,R01E G-11 - Section cor. comm. to sec.'s 27,28,33, & 34, T28N,R01E 1993 - Remon L.C.R.C. - L.3, p.183 - Frederick J. King, P.S. #25852 - Fnd. Rec. 1" pipe with R.T. Post. Fnd. Rec. Marlatt Wit. Set Oscoda County Pipe & Cap @ 1" Pipe position. N35°E 42.37' Set Tag W Sd. 4"x6" Sq. Post; South 16.42' Set Tag E Sd. R.T. Post; S15°W 18.71' Set Tag W Sd. 16" Oak; N65°W 88.00' Set Tag SW Sd. Pwr. Pole 1993 - Remon L.C.R.C. - L.3, p.223 - Larry G. Beauregard, P.S. #18654 - Fnd. 1/2" bar in mon. box in c/l Co. Rd #489. Added cap #18654. S60°W P. Pole 59.86'; S40°W 12" J. Pine 72.57'; S40°E 18.71' P. Pole 45.60'; N75°E Center of 2" steel Cor. fe. post 99.71'

B. Description of corner evidence found and/or method applies in restoring or re-establishing corner:

E-11- Section cor. comm. to sec.'s 28,29,32, & 33, T28N,R01E G-11 - Section cor. comm. to sec.'s 27,28,33, & 34, T28N,R01E Found Oscoda County monument per L.3, p.183. Corner falls 3.5' south of E-W gravel county road. Lowered monument 6" below grade. Accepted found county monument as a careful and faithful establishment of the position of the corner. Found no other evidence to dispute the location for the corner. Found 1/2" CIR#18654 in monument box in centerline Intersection of Co. Rd. 489 and Farrington road per L.3, p.223. Accepted found 1/2" CIR as a careful and faithful establishment of the position of the corner. Found no other evidence to dispute the location for the corner. PREVIOUS COUNTY SURVEYORS HAVE INDICATED THAT THIS TWP. NOTES ARE FRAUDULANT-NO EVIDENCE OF ORIGINAL SURVEY FND. THIS CORNER WAS NEVER SET DUE TO THE FRAUDULENT SURVEY OF T28N, R1E, DOCUMENTED BY PREVIOUS CO. SURVEYORS.

C. Description of monument for corner and accessories established to perpetuate locating the position of the corner:

E-11- Section cor. comm. to sec.'s 28,29,32, & 33, T28N,R01E G-11 - Section cor. comm. to sec.'s 27,28,33, & 34, T28N,R01E Oscoda Co. cap on 1"x3' galvanized pipe. 1/2" capped iron rod w/P.S. cap #18654 in monument box. Wit: N55°E 58.60' to set N&T on NW side 9" J. Pine S41°E 37.21' to set N&T on NE side 10" J. Pine *S18°W 18.72' to set N&T on W side 14" R. Oak *N65°W 88.04' to fd. nail on S side P. Pole Set Blue Carsonite Post 33' North * Witness of previous record. Wit: *N70°E 99.70' to fd. divot on SE side 2" steel F.P. corner *S50°E 45.65' to fd. N&T on SE side P. Pole *S35°W 72.55' to fd. N&T on SE side dead 14" J. Pine *S58°W 59.89' to fd. N&T on SE side P. Pole N67°W 65.18' to set N&T on NE side 10" J. Pine * Witness of previous record.

Signed by: Matthew S. Dontz Surveyor's Michigan License No.: 56128

Date: 3-20-2013

RECEIVED APR 12 2013



LAND CORNER RECORDATION CERTIFICATE

Filing Requirement of Act 74, Mich. PA 1970

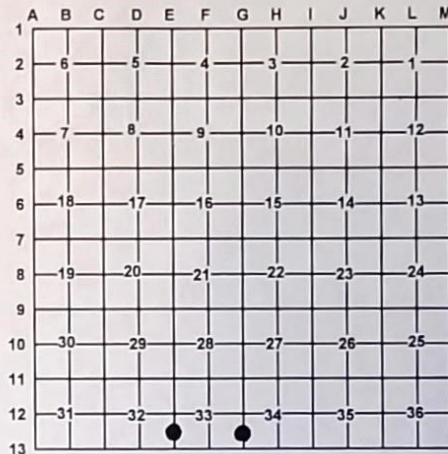
For Corners In: OSCODA (County) Located In G.Wood Twp. Corner Code #
1. Public Land Survey T
2. Property Controlling in Section S 33 T 28N R 01E 10
3. Miscellaneous Property in Section S 33 T 28N R 01E 14
4. Lot No: Recorded Plat:
5. Private Claims:



JERI WINTON
OSCODA COUNTY
REGISTER OF DEEDS
04/16/2013 10:49:57AM
FEE: \$14.00
PAGES: 1 RCPT#: 19667
LC-13009 CORNER RECORDATION
Register of Deeds Stamp & File Number

I, Matthew S. Dontz, in a field survey on July 30, 2012 do hereby state that under requirements of PA 74, Michigan PA of 1970, the corner points mentioned in lines 1 and 2 above were in conformance with regulations and rules therefore as required in the current manual of survey instructions of the United States Department of the Interior, Bureau of Land Management or by a decree of a Court of Law and/or that the corner points mentioned in lines 3, 4 and 5 above were in conformance with the rules of the Michigan Board of Land Surveyors or by a Decree of a Court of Law; established, re-established, monumented, recovered, found as expressed below:

NOTE: Not more than 2 corners, all in the same town and range, may be recorded on this certificate.



A. Description of original monument and accessories and/or subsequent restoration:

10- S 1/16 corner common to sections 32 & 33, T28N,R01E None
14 - S 1/16 corner common to sections 33 & 34, T28N,R01E
1974 - L.C.R.C. - Kenneth J. Ostling, P.S.#10068 - Set corner by standard survey procedure for the subdivision of sections. Set 1 1/4" x 2 1/2" feet pipe. 12" J. Pine S13°E 34.9' 6" J. Pine S83°E 31.3'

B. Description of corner evidence found and/or method applies in restoring or re-establishing corner:

10- S 1/16 corner common to sections 32 & 33, T28N,R01E Set stamped 2" dia. aluminum cap on 5/8"x34" rebar per standard BLM procedure. Corner falls 33' west of a N-S overhead power line and 442' north of the north bank of the East Branch of Big Creek. Found no other evidence to dispute the location for the corner.
14 - S 1/16 corner common to sections 33 & 34, T28N,R01E Searched for set pipe per Ostling L.C.R.C.. Found no evidence of pipe. 2-track trail road was built in search area. Found one living witness per Ostling and stump of other witness. Reset corner off of distances from corner record. Position fits very well compared to Ostling's measurements north and south. Set 2" dia. aluminum cap on 5/8"x34" rebar. Found no other evidence to dispute the location for the corner.

C. Description of monument for corner and accessories established to perpetuate locating the position of the corner:

10- S 1/16 corner common to sections 32 & 33, T28N,R01E 2" dia. stamped aluminum cap on 5/8"x34" rebar.
Wit: N69°E 11.17' to set N&T on S side 8" Spruce East 5.85' to set N&T on S side 12" Cedar S89°W 27.30' to set N&T on N side 13" Cedar N45°W 24.05' to set N&T on SW side 6" Spruce Set Blue Carsonite Post w/ loc. tag 1' North
14 - S 1/16 corner common to sections 33 & 34, T28N,R01E 2" dia. stamped aluminum cap on 5/8"x34" rebar.
Wit: N51°E 62.83' to set N&T on SE side 6" Oak *S18°E 35.33' to set N&T on SW side 15" J. Pine S55°W 66.82' to set N&T on SE side 15" R. Pine N14°E 55.44' to set N&T on E side 10" Oak Set Blue Carsonite Post w/ loc. tag 10' West

* Witness of previous record.



Signed by: Matthew S. Dontz
Surveyor's Michigan License No.: 56128

Date: 3-10-2013

RECEIVED APR 12 2013

LAND CORNER RECORDATION CERTIFICATE
Filing Requirement of Act 74, Mich. P.A. 1970

For corners in

Oscoda (County) Located In: Corner Code //

1. Public Land Survey T 28N R 1E (1-13)
T R
T R
T R

2. Property Controlling S T R
in Section S T R

3. Miscellaneous S I R
Property in Sec. S I R

4. Lot No. , Recorded Plat

5. Private Claims

L. 3 pg 245

FILED

At 12:05 o'clock P M
Date 12-17 1993

Clerk/Register of Deeds
Oscoda County, Michigan
Register of Deeds Stamp & File Number

	A	B	C	D	E	F	G	H	I	J	K	L	M
2	6		5		4		3		2		1		
3													
4	7		8		9		10		11		12		
5													
6	18		17		16		15		14		13		
7													
8	19		20		21		22		23		24		
9													
10	30		29		28		27		26		25		
11													
12	31		32		33		34		35		36		
13													

I, Larry G Beauregard, in a field survey on October, 19 93, do hereby certify that under requirements of P.A. 74, Michigan P.A. of 1970, the corner points mentioned in lines 1 and 2 above were in conformance with regulations and rules therefore as required in the current manual of survey instructions of the United States Department of the Interior, Bureau of Land Management or by a decree of a Court of Law and/or that the corner points mentioned in lines 3, 4 and 5 above were in conformance with the rules of the Michigan Board of Land Surveyors or by a Decree of a Court of Law; established, re-established, monumented, re-monumented, recovered, found as expressed below:

NOTE: Not more than 4 corners, all in the same town and range, may be recorded on this certificate.

A. Description of original monument and accessories and/or subsequent restoration:

(1-13) Original Cor. set by Lewis Clason June 1839.
N. Pine 30" N 3 1/2° W 58 links N. Pine 18" N 32° E 42 1/2 links
C.O. Seeley Co. Surveyor 1916 fnd. or set 1 1/4" pipe in Conc. Mon. blk. from original
U.S. BT's above, then ran line 6 miles North to Co. line.
George D. Henning P.S. #2240 in 1943 fnd. 1 1/4" pipe in Conc. blk. & U.S. BT's &
marked: (N 39 1/2° E 31.3' 8" J. Pine, NBT) (N 12° W 38.3' 24" W. Pine stp.) (old wits)
(N 32° E 28.1' U.S. wit.stp.) (old wits).
No Act 74 on file.

B. Description of corner evidence found and/or method applied in restoring or reestablishing corner:

(1-13) Fnd. 1 1/4" pipe in Conc. blk. & one wits. by Henning: (N 39 1/2° E 31.1' 12" J. Pine) (dead) but blaze is still visible. West 9.88' fnd. 1 1/4" pipe for the closing Cor. of Sec. 2 & 3, 27/1.



C. Description of monument for corner and accessories established to perpetuate locating the position of the corner:

(1-13) Sec. Cor. Comm. to Sec's 34 & 35, T28N, R1E
1 1/4" pipe in Conc. blk. 2" above ground. Accepted as a perpetuation of the original government corner, approved by the Peer Group on Oct. 25, 1993.
N 40° E 14.45' 12" W. Pine
N 50° W 21.10' 12" W. Pine
S 50° W 20.10' 14" W. Pine
S 25° E 13.35' 7" W. Pine
(Placed blaze, 20 penny spike & P.S. tag #18654) (typ)

Signed by Larry G Beauregard Date 12/17/93
Surveyor's Michigan License No. 18654