



TIMBER SALE MAP

This information provided by authority of Part 525, 1994 PA 451, as amended.

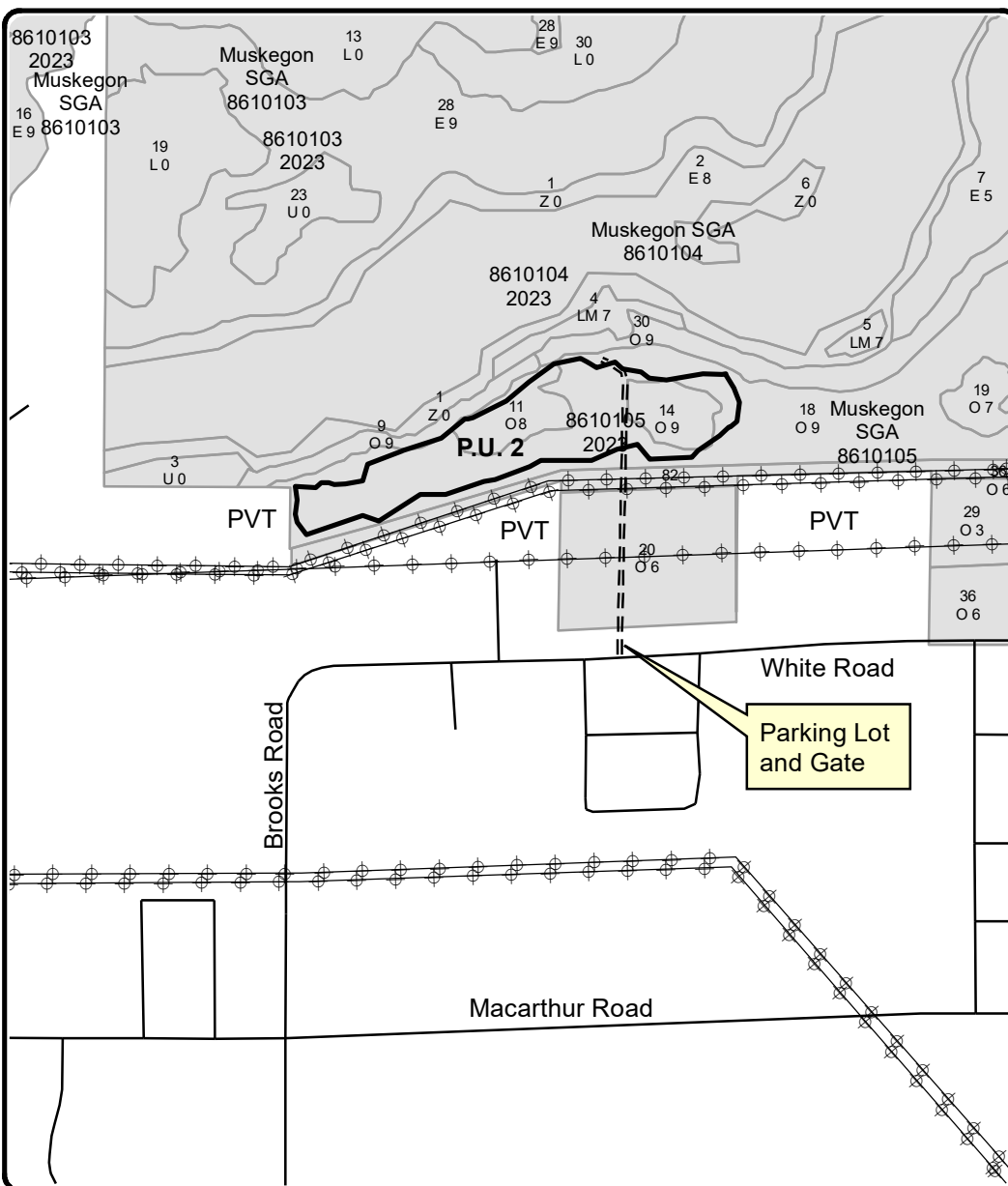
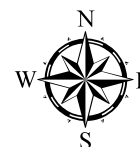
Forest Management Unit Muskegon State Game Area		County Muskegon County	Mapped By Jesse Bramer		Date 07/24/2020	Page 3	of 3
Township 10N	Range 15W	Section(s) and Subdivision(s) Section 3, 7, & 9			Scale 1:15,840		
Cover Type				Density			
A = Aspen	H = Hemlock	N = Marsh	U = Upland Brush	0 = Non Stocked	5 = Pole Timber Medium		
B = Paper Birch	J = Jack Pine	O = Oak	UM = Upland Mixed	1 = Seedling Sapling Poor	6 = Pole Timber Well		
C = Cedar	L = Lowland Brush	P = Lowland Poplar	V = Bog or Marsh	2 = Seedling Sapling Medium	7 = Saw Timber Poor		
D = Treed Bog	LM = Lowland Mixed	Q = Mixed Swamp Conifer	W = White Pine	3 = Seedling Sapling Well	8 = Saw Timber Medium		
E = Swamp Hdwoods	M = Mpl, Bch, Brch	R = Red Pine	X = Non Stocked	4 = Pole Timber Poor	9 = Saw Timber Well		
F = Spruce Fir	MC = Mixed Conifer	S = Black Spruce	Z = Water				
G = Grass	MD = Mixed Deciduous	T = Tamarack					

PU Acres

1	32.2
2	35.1

Hilton Park

Compartment 5 67.3 Total Acres



Legend

- Sale Area (Red Painted Boundary)
- Powerline
- DNR - Forest Access Route
- Road
- Stand Boundaries
- State Game Area



QR Code opens map in Avenza App

