



Site Prep Map

Compartment 253, 250	Date 02/22/2024	
Scale 1:10,000	Page 2	Of 3

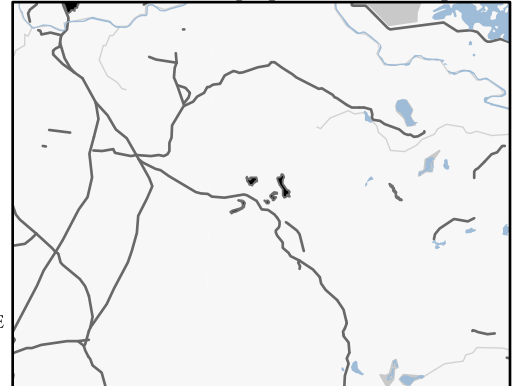
Forest Management Unit GWINN	County Marquette	Project: 32253042, 32250045 Method: Trench
---------------------------------	---------------------	---

Township 46N	Range 27W	Section(s) and Subdivision(s) Section 27, 28, 29
-----------------	--------------	--

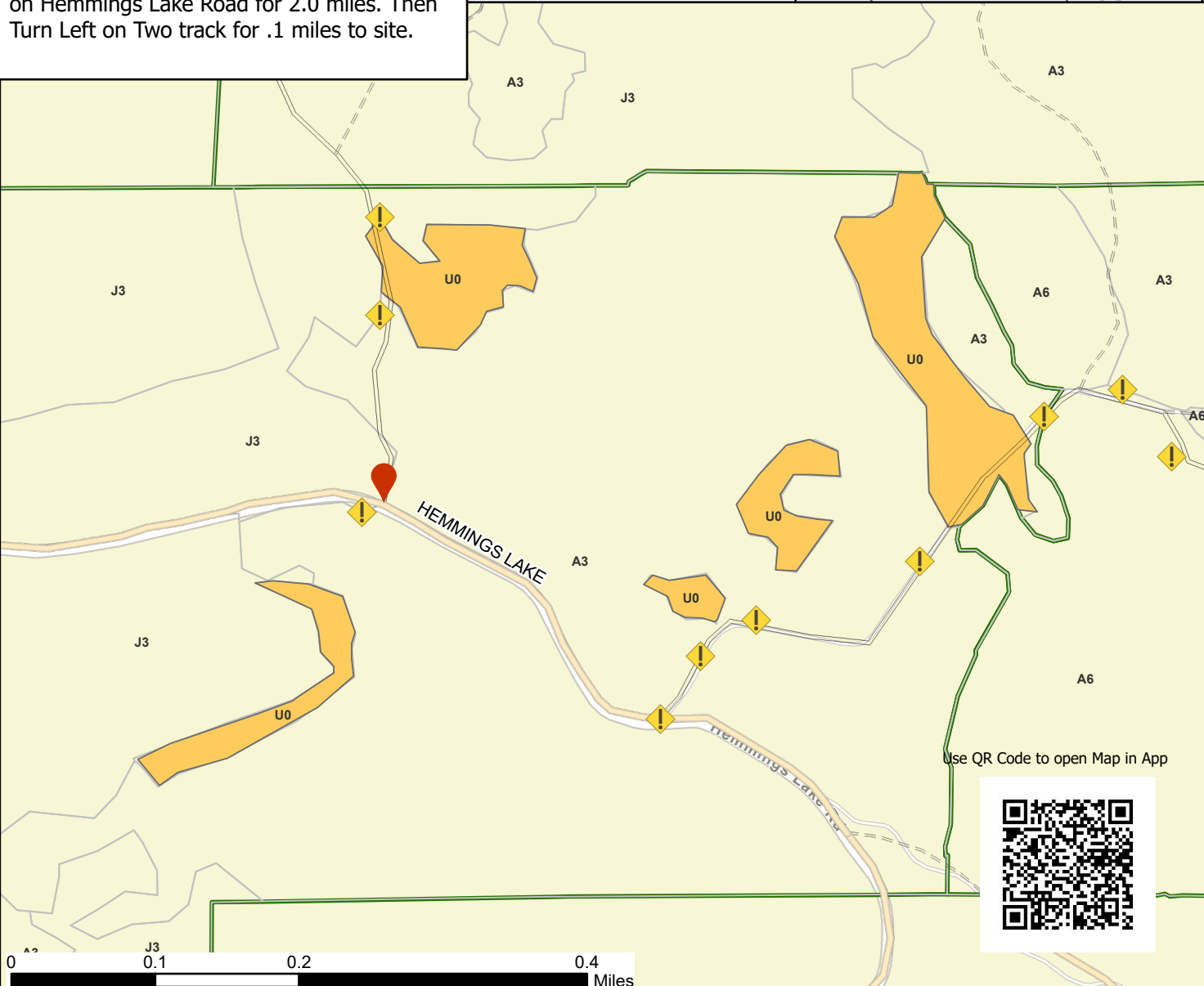
Legend

- Trenching Site
- Secondary Forest Road
- Forest Access Route
- Non-DNR Road
- Flaging
- GPS Point -87.706580, 46.359531

Locator Map (1:200,000)



Jack Pine Trenching
 32253045-Prep 17.1 Acres
 32250045-Prep 2.1 Acres
 Driving Directions: From Corner of CR 581 and Steel Bridge Road (CR Cg) , Drive 3.2 miles down Steel Bridge Road. Then turn left on Hemmings Lake Road for 2.0 miles. Then Turn Left on Two track for .1 miles to site.



Use QR Code to open Map in App

