



### Site Prep Map

Compartment 32254	Date 02/22/2024	
Scale 1:24,000	Page 1	Of 1

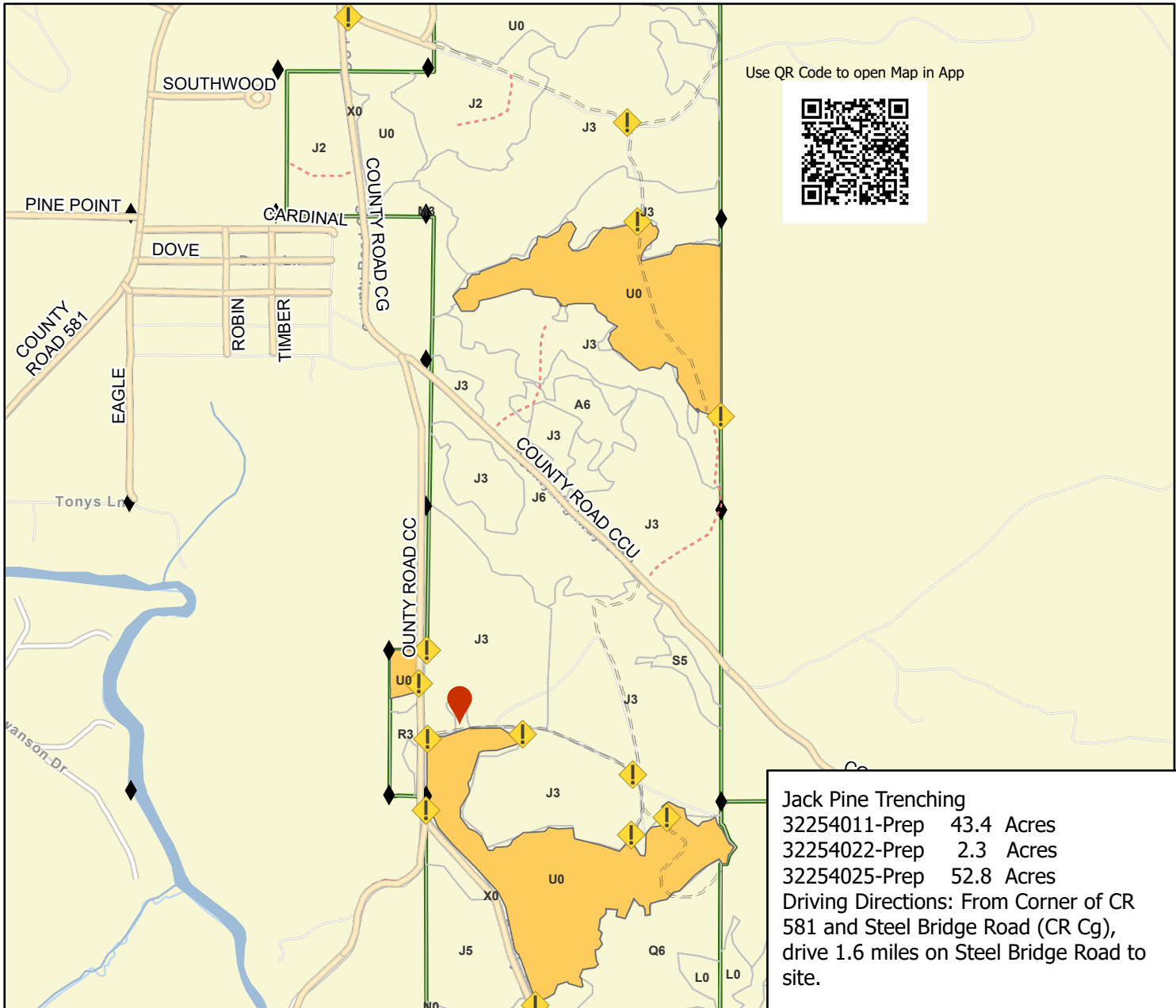
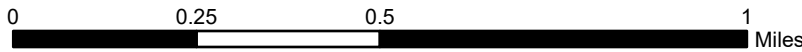
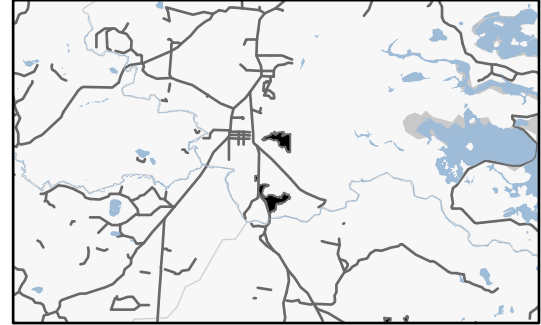
Forest Management Unit GWINN	County Marquette	Project: 32254011, 22, 25 Method: Trench
---------------------------------	---------------------	---

Township 45N	Range 28W	Section(s) and Subdivision(s) Section 12, 13
-----------------	--------------	--

#### Legend

- Trenching Site
- Forest Access Route
- Administrative Access Only
- Non-DNR Road
- Survey Grade Corner
- Flaging
- GPS Point -87.749564, 46.393421

#### Locator Map (1:200,000)



Use QR Code to open Map in App



**Jack Pine Trenching**  
 32254011-Prep 43.4 Acres  
 32254022-Prep 2.3 Acres  
 32254025-Prep 52.8 Acres  
 Driving Directions: From Corner of CR 581 and Steel Bridge Road (CR Cg), drive 1.6 miles on Steel Bridge Road to site.