



JENNIFER M. GRANHOLM
GOVERNOR

STATE OF MICHIGAN
DEPARTMENT OF NATURAL RESOURCES & ENVIRONMENT
LANSING



REBECCA A. HUMPHRIES
DIRECTOR

NOTICE - TIMBER SALE CORRECTION:

The Crystal Falls Management Unit, TIMBER SALE Notice for sales being offered at 3:00 p.m., on September 1, 2010, had an omission of page 1 of 2 of the map, for sale **Pineapple Popple (12-006-10-01)**.

The omitted page is attached.

We apologize for any inconvenience this may have caused you. If you need assistance, please contact the Crystal Falls office at 906-875-6622.

Doug Heym, Timber Sales Specialist
Forest Management Division
P.O. Box 30452
Lansing, Michigan 48909
517-335-3342

/Attachment



Michigan Department of Natural Resources - Forest, Mineral & Fire Management
TIMBER SALE MAP
 This information provided by authority of Part 525 of Act 451, PA 1994, as amended.

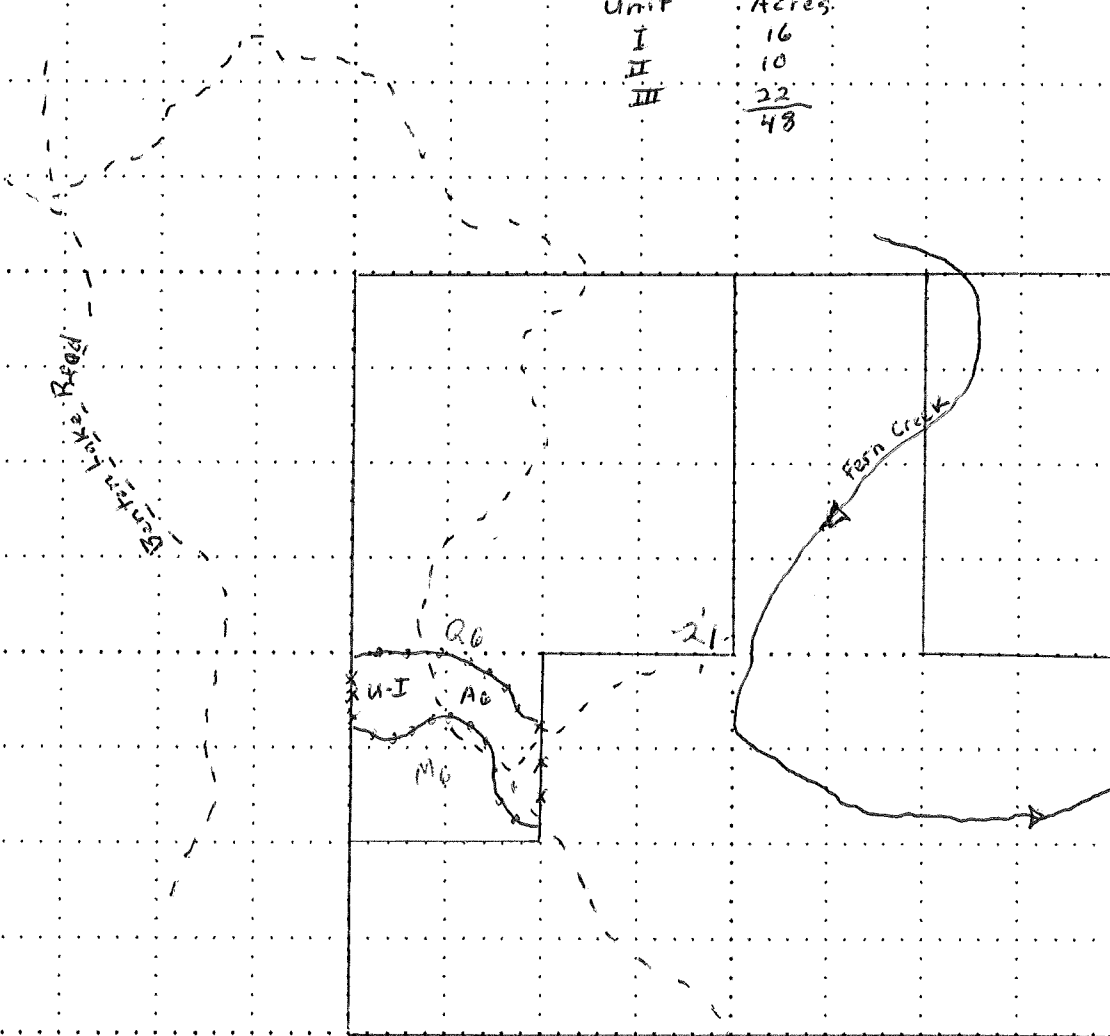
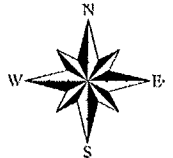
Sale Number	Year
12-006-10-01	2010

Forest Management Unit Crystal Falls	County Dickinson	Mapped By Otto Jacob	Date 4/2/2010	Page 1	of 2
Township 40N	Range 29W	Section(s) and Subdivision(s) sec 21 NWSW			
Cruised By Otto Jacob					

Cover Type				Density	
A = Aspen	G = Grass	O = Oak	U = Upland Brush	0 = Non Stocked	5 = Pole Timber Medium
B = Paper Birch	H = Hemlock	P = Lowland Poplar	V = Bog or Marsh	1 = Seedling Sapling Poor	6 = Pole Timber Well
C = Cedar	J = Jack Pine	Q = Mixed Swamp Cnfr	W = White Pine	2 = Seedling Sapling Medium	7 = Saw Timber Poor
D = Tread Bog	L = Lowland Brush	R = Red Pine	X = Non Stocked	3 = Seedling Sapling Well	8 = Saw Timber Medium
E = Swamp Hdwoods	M = Mpl, Bch, Brch	S = Black Spruce	Z = Water	4 = Pole Timber Poor	9 = Saw Timber Well
F = Spruce Fir	N = Marsh	T = Tamarack			

Sale Name: Pineapple Popple

Unit	Acres
I	16
II	10
III	22
	<u>48</u>



- Keys
- Red line
 - Blue line
 - Wood Road
 - Black Top
 - creek

