



DEPARTMENT OF NATURAL RESOURCES & ENVIRONMENT  
STATE OF MICHIGAN

TIMBER SALE PROSPECTUS

SALE TIME, DATE AND LOCATION  
2:00 p.m. on December 16, 2010  
**TRAVERSE CITY**

Notice is hereby given that bids will be received by the Unit Manager, TRAVERSE CITY MANAGEMENT UNIT, for certain timber on the following described lands. The Bidder is advised to inspect the sale area and review the location, estimated volumes, operating costs, and sale contract terms of the proposed sale.

CATERPILLAR RED / T24N, R15W, SEC. 26, W1/2NE1/4, NENW.

MANISTEE COUNTY (Appr. \$17,778.20)

SALE ACRES: 19

No designated recreation site such as a trail, pathway, or campground is within the sale area.

Access may be through state forest land.

LADY SLIPPER PINE / T24N, R15W, SEC. 36, SWNE.

MANISTEE COUNTY (Appr. \$11,747.95)

SALE ACRES: 19

No designated recreation site such as a trail, pathway, or campground is within the sale area.

Access may be through state forest land.

LOST WOODCOCK PINE / T24N, R15W, SEC. 14, E1/2SE1/4.

MANISTEE COUNTY (Appr. \$17,121.30)

SALE ACRES: 25

No designated recreation site such as a trail, pathway, or campground is within the sale area.

Access may be through state forest land.

SCHECKS MIX / T26N, R10W, SEC. 13, SENE, N1/2SE, SWSE.

GRAND TRAVERSE COUNTY (Appr. \$3,759.65)

SALE ACRES: 41

A recreation site such as a trail, pathway, or campground is within the sale area or the vicinity. Certain restrictions/specifications may be applicable including time restrictions.

Access may be through state forest land.

ALMOST HOME OAK / T26N, R10W, SEC. 26, W1/2NW, SENW.

GRAND TRAVERSE COUNTY (Appr. \$11,180.40)

SALE ACRES: 45

A recreation site such as a trail, pathway, or campground is within the sale area or the vicinity. Certain restrictions/specifications may be applicable including time restrictions.

Access may be through state forest land.

Please be aware that some landowners may request 60 days or more notice for forest harvesting access across their land.



BID INSTRUCTIONS (Ver. 06/23/2008):

1. Bid Location, Date, and Time: Bids must be received by the Unit Manager, Traverse City Management Unit, 970 Emerson, Traverse City, MI 49686, no later than 2:00 p.m. on December 16, 2010. For further information concerning this sale, contact the Unit Manager at 231-922-5280.
2. Bidder's Qualifications: Purchaser shall obtain workers compensation insurance to cover claims under Michigan's Worker's Disability Compensation Act of 1969 or similar employee benefit act of any other state applicable to an employee. If all or part of a timber sale was prepared by a private contractor, that contractor and that contractor's company are not permitted to bid on the timber sale contract. Bids will not be accepted from individuals or companies appearing on the DNRE/FMD No-Bid List. This list contains the names of purchasers who previously failed to execute a contract within 21-days or who have a history of poor performance.
3. Preparation of Sealed Bids: Bids shall be manually signed in ink; bid prices must be entered for each species and product in the Bid Price column for all material subject to bidding; and all fill-in blanks must be completed. If erasures or other changes appear on the forms, each erasure or change must be initialed by the person signing the bid.
4. Submission of Sealed Bids: Bid forms may be obtained from the Unit Manager. All bids must be submitted on the bid form and in an envelope clearly identified as described in this section. NOTE: Only one bid form per bid envelope. Sealed bids must be submitted to the Unit office designated in the prospectus and must be submitted at or prior to the time established in the prospectus. The envelope should show on the outside (a) that it is a "Bid for Timber," and (b) the sale name or number, and (c) the date and time of bid opening as shown in the prospectus. Bids received after the time specified in the sale prospectus are late bids and will be rejected.
5. Public Opening of Sealed Bids: If conditions permit, the sealed bids will be publicly opened and posted at the time and place set in the prospectus.
6. Award of Contract: Award of the contract will be made to the Bidder whose bid, conforming to the prospectus, is most advantageous to the State of Michigan on the basis of total value at rates bid for the estimated quantities. The State reserves the right to reject any bid or waive any minor irregularity in bids received. A written award mailed (or otherwise furnished) to the successful Bidder shall be deemed to result in a binding contract without further action by either party.
7. Down Payment: The Bidder to whom award is made must make a down payment within 21 days of the sale award. The amount of the down payment will be calculated as shown in the Bond and Payment Schedule of this prospectus. Only cash may be used to meet this requirement.
8. Performance Security: As guarantee of faithful performance, a cash bond, certificate of deposit, surety bond or irrevocable letter of credit (LOC) is required within 21 days of the sale award. The amount of the performance security is shown in the Bond and Payment Schedule of this prospectus. If an LOC or surety is used, the coverage must extend for at least 6 months beyond the contract expiration.
9. Timber Sale Contract: Additional conditions and requirements common to all timber sales are listed on the timber sale contract (R4031) and are available on line at [www.michigan.gov/dnr](http://www.michigan.gov/dnr). Contact the Unit Manager for additional information or a sample contract. Within 21 days of the date of the award letter, the bidder must sign the contract and provide the required down payment, performance security, and verification of worker's disability compensation. The down payment and performance security shall be in accordance with the provisions of the timber sale contract, in the sums stated in this prospectus. If these actions are not taken, then the Bidder, the Bidder's corporation, and the corporation's principals may not be permitted to bid on State timber sales for a period of 1 year. In addition, the Bidder certifies that if awarded this contract, the Bidder will complete the timber sale contract in accordance with its terms and any modifications thereof including requirements to purchase, cut, and remove the included timber by the termination date.

10. Disclaimer of Estimates and Bidder's Warranty of Inspection: Before submitting this bid, the Bidder is advised and cautioned to inspect the sale area, review the requirements of the sale contract, and take other steps as may be reasonably necessary to ascertain the location, estimated volumes, construction estimates, and operating costs of the proposed sale. Failure to do so will not relieve the Bidder from responsibility for completing the contract.

The Bidder warrants that this bid is submitted solely on the basis of the Bidder's examination and inspection of the quality and quantity of the timber offered for sale and the Bidder's opinion of the value thereof and the costs of recovery. No reliance should be placed on the State of Michigan's estimates of timber quality, quantity or costs of recovery. Bidder further acknowledges that the State of Michigan: (i) expressly disclaims any warranty of fitness of timber for any purpose; (ii) offers this timber as is without any warranty of quality (merchantability) or quantity and (iii) expressly disclaims any warranty as to the quantity or quality of timber sold.

11. Certification and Chain-of-Custody: Unless otherwise indicated in the contract under section 7 - Other Conditions of the Sale Specific Conditions & Requirements, the area encompassed by this timber sale is certified to the standards of the Forest Stewardship Council (FSC) - Certificate #SCS-FM/COC-090N and the Sustainable Forestry Initiative (SFI) - Certificate # NSF-SFIS-5Y031-S1. Forest products from this sale may be delivered to the mill as "FSC and / or SFI certified" as long as the contractor hauling the forest products is chain-of-custody (COC) certified or covered under a COC certificate from the destination mill. The purchaser is responsible for maintaining COC after leaving the sale area.

REBECCA A. HUMPHRIES  
Director

CATERPILLAR RED (043-10-01)

A timber sale contract for this LUMP SUM SEALED timber sale will be awarded the responsible bidder offering the highest sealed bid price. Bids must be at or above the following appraised price for each species:

<u>SPECIES</u>	<u>ESTIMATED VOLUME*</u>	<u>APPRAISED PRICE</u>
SAWLOGS		
RED PINE	20.90 MBF	\$ 108.00/MBF
PULPWOOD		
RED PINE	340.00 CORDS	\$ 45.65/CORD

\*The volumes are statistically estimated within plus (+) or minus (-) 23.32 percent. These estimated volumes are final and not subject to adjustment. Prospective bidders are urged to examine this timber and to make their own estimates of quantity and quality.

BOND AND PAYMENT SCHEDULE:

1. A bond in the amount of \$889.00, to insure faithful performance of the conditions of the contract, will be deposited by the successful bidder within 21 days of the sale award.
2. Cutting in any sale or unit without the required advance payment would be considered a trespass.
3. Total payment may be paid in advance or according to the following schedule:
  - (a) Ten percent (10%) of the sale value must be paid within 21 days of the sale award.
  - (b) The remainder is due before cutting begins.
4. If no cutting takes place, the 10% down payment will not be refunded.
5. Operations on the contract issued will terminate on December 31, 2012.



Michigan Department of Natural Resources – Forest, Mineral & Fire Management  
**TIMBER SALE MAP**

This information is provided by authority of Part 525 of Act 451, PA 1994, as amended.

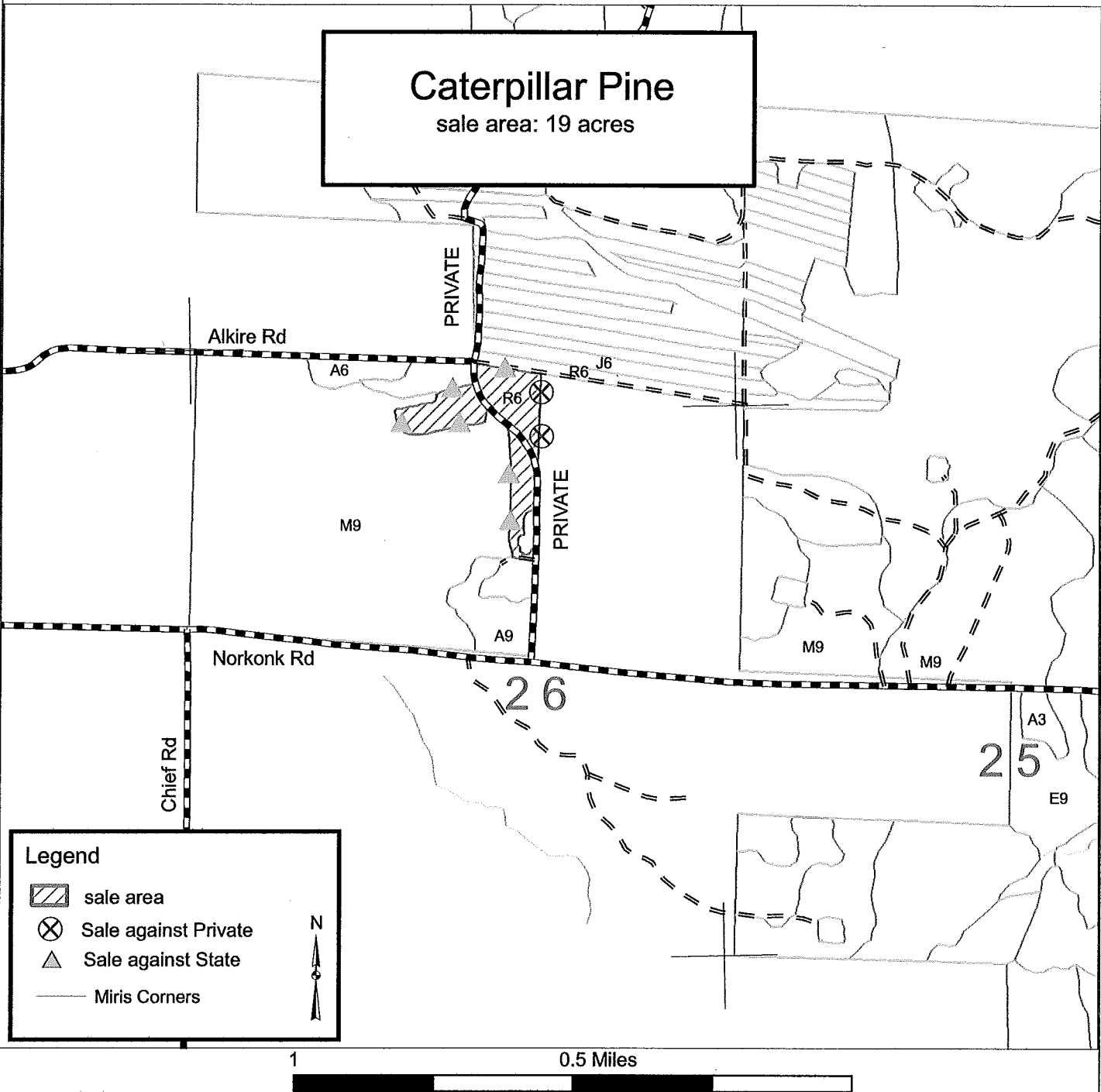
SALE NUMBER	YEAR
<b>43</b>	<b>2010</b>
DATE	PAGE OF
6/2/10	1   1

FOREST MANAGEMENT UNIT	COUNTY	MAPPED BY
<b>Traverse City</b>	<b>Manistee</b>	<b>Scott Lint</b>
		CRUISED BY
		<b>Scott Lint</b>

TOWNSHIP	RANGE	SECTION(S) AND SUBDIVISION(S)
<b>TN 24</b>	<b>RW 15</b>	<b>26 - W1/2NE1/4, NENW</b>

1:15,840

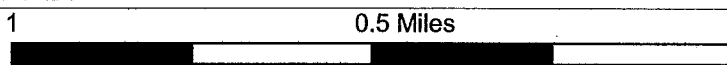
Cover Type				Density	
A = Aspen	H = Hemlock	P = Lowland Poplar	V = Bog or Marsh	0 = Non Stocked	5 = Pole Timber Medium
B = Paper Birch	J = Jack Pine	Q = Mixed Swamp Cnfr	W = White Pine	1 = Seedling Sapling Poor	6 = Pole Timber Well
C = Cedar	L = Lowland Brush	R = Red Pine	X = Non Stocked	2 = Seedling Sapling Medium	7 = Saw Timber Poor
E = Swamp Hdwoods	M = Mpl, Bch, Brch	S = Black Spruce	Z = Water	3 = Seedling Sapling Well	8 = Saw Timber Medium
F = Spruce Fir	N = Marsh	T = Tamarack		4 = Pole Timber Poor	9 = Saw Timber Well
G = Grass	O = Oak	U = Upland Brush			



**Legend**

- sale area
- Sale against Private
- Sale against State
- Miris Corners

N



## Sale Specific Conditions & Requirements

**Sale Name: Caterpillar Red    Sale Number: 61-043-10-01**

### 1 - Sale Area

#### 1.2 - Boundaries

##### 1.2.1 - Painted boundaries (12/08)

The sale boundary is marked and identified by blue paint, changes in timber cover type, and forest roads. Exterior sale boundary lines against private property are marked with blue paint. Exterior sale boundary lines against state are not marked with paint. The sale boundary is the red pine plantation, bounded by maple and aspen cover types to the west and by forest roads on the north and east, as indicated on the timber sale map.

### 2 - Timber Specifications

#### 2.1 - Included Timber

##### 2.1.3 - Cut tree marked unit(s) (12/08)

Within Payment Unit(s) 1, trees are designated for cutting when marked with orange paint above and below stump height, regardless of merchantability.

#### 2.2 - Utilization

##### 2.2.4 - Skidding length (2/09)

Skidding of unlimbed tops or lengths over 17 feet is not permissible.

### 5 - Operations

#### 5.2 - Conduct of Operations

##### 5.2.1 - Slash

##### 5.2.1.8 - Slash height (12/08)

No slash or tree tops may exceed 24 inches in height.

##### 5.2.3 - Operating Restrictions

##### 5.2.3.6 - Bark beetle restriction (12/08)

In the event drought creates a high risk of pine bark beetle infestation, pine is not to be cut during the period March 1 through July 1, unless all portions of trees greater than two inches in diameter are removed from the sale area, reduced to chips, or treated to the satisfaction of the Unit Manager or his/her representative, within fifteen days of being severed from the stump. Pine log decks, pulpwood piles and treetops that are piled for chipping in the fall or winter within a 1/4 mile of susceptible sites must be removed before March 15. Residual slash must not be placed in piles or rows and must be spread over the site for quick drying. The Department of Natural Resources will exercise this specification if the risk of damage warrants.





LADY SLIPPER PINE (046-10-01)

A timber sale contract for this LUMP SUM SEALED timber sale will be awarded the responsible bidder offering the highest sealed bid price. Bids must be at or above the following appraised price for each species:

<u>SPECIES</u>	<u>ESTIMATED VOLUME*</u>	<u>APPRAISED PRICE</u>
SAWLOGS		
RED PINE	17.90 MBF	\$ 108.00/MBF
PULPWOOD		
RED PINE	215.00 CORDS	\$ 45.65/CORD

\*The volumes are statistically estimated within plus (+) or minus (-) 14.9 percent. These estimated volumes are final and not subject to adjustment. Prospective bidders are urged to examine this timber and to make their own estimates of quantity and quality.

BOND AND PAYMENT SCHEDULE:

1. A bond in the amount of \$680.00, to insure faithful performance of the conditions of the contract, will be deposited by the successful bidder within 21 days of the sale award.
2. Cutting in any sale or unit without the required advance payment would be considered a trespass.
3. Total payment may be paid in advance or according to the following schedule:
  - (a) Ten percent (10%) of the sale value must be paid within 21 days of the sale award.
  - (b) The remainder is due before cutting begins.
4. If no cutting takes place, the 10% down payment will not be refunded.
5. Operations on the contract issued will terminate on December 31, 2012.



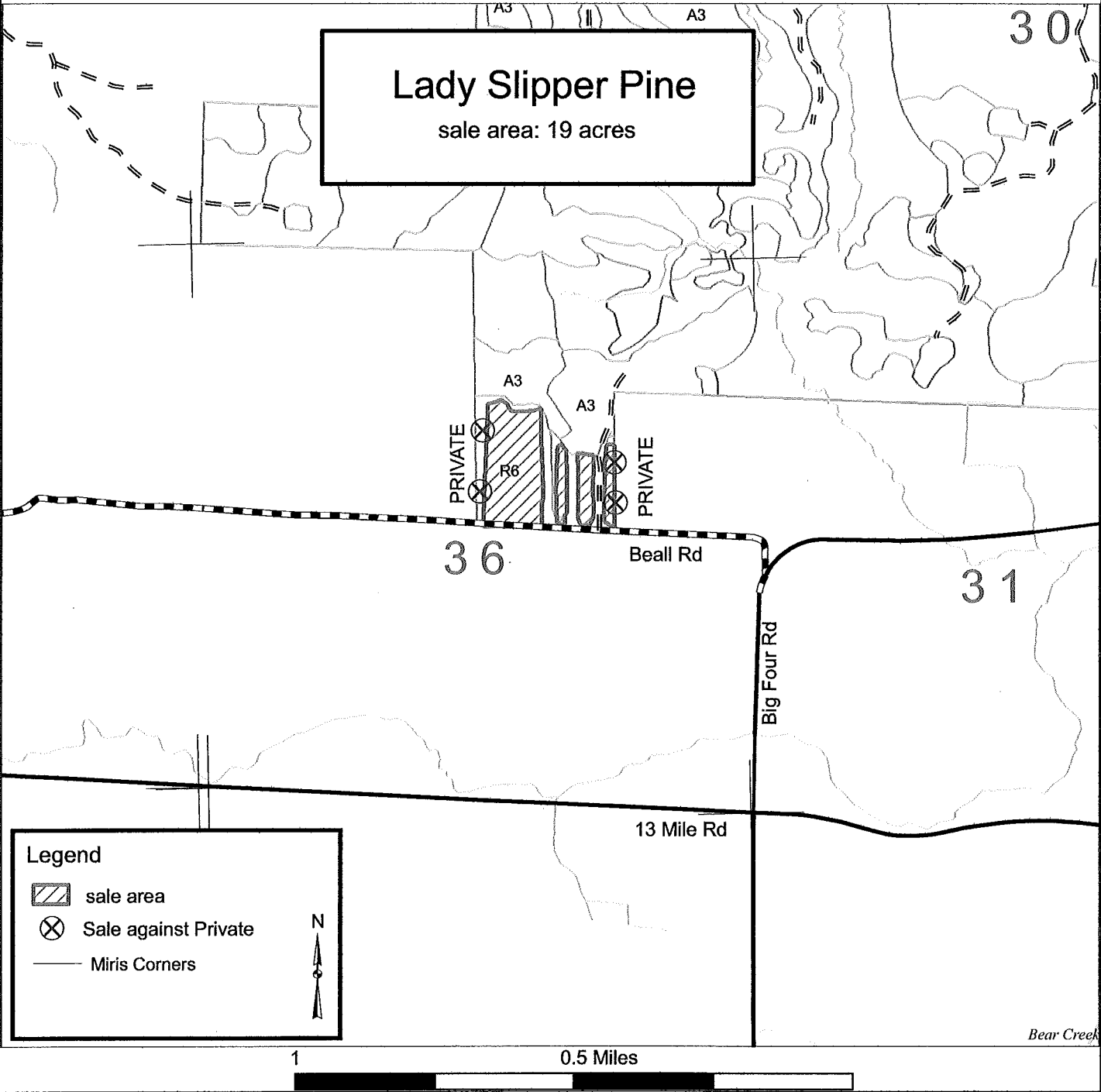
Michigan Department of Natural Resources – Forest, Mineral & Fire Management  
**TIMBER SALE MAP**

This information is provided by authority of Part 525 of Act 451, PA 1994, as amended.

SALE NUMBER	YEAR
46	2010
DATE	PAGE OF
6/2/10	1 1

FOREST MANAGEMENT UNIT	COUNTY	MAPPED BY
Traverse City	Manistee	Scott Lint
TOWNSHIP	RANGE	SECTION(S) AND SUBDIVISION(S)
TN 24	RW 15	36 - SWNE
		CRUISED BY
		Scott Lint
1:15,840		

Cover Type				Density	
A = Aspen	H = Hemlock	P = Lowland Poplar	V = Bog or Marsh	0 = Non Stocked	5 = Pole Timber Medium
B = Paper Birch	J = Jack Pine	Q = Mixed Swamp Cnfr	W = White Pine	1 = Seedling Sapling Poor	6 = Pole Timber Well
C = Cedar	L = Lowland Brush	R = Red Pine	X = Non Stocked	2 = Seedling Sapling Medium	7 = Saw Timber Poor
E = Swamp Hdwoods	M = Mpl, Bch, Brch	S = Black Spruce	Z = Water	3 = Seedling Sapling Well	8 = Saw Timber Medium
F = Spruce Fir	N = Marsh	T = Tamarack		4 = Pole Timber Poor	9 = Saw Timber Well
G = Grass	O = Oak	U = Upland Brush			



## **Sale Specific Conditions & Requirements**

**Sale Name: Lady Slipper Pine    Sale Number: 61-046-10-01**

### **1 - Sale Area**

#### **1.2 - Boundaries**

##### **1.2.1 - Painted boundaries (12/08)**

The sale boundary is marked and identified by blue paint, changes in timber cover type, and a county road. Exterior sale boundary lines against private property are marked with blue paint on the east and west and Beall Rd on the south. Exterior sale boundary lines against state are not marked with paint. The north edge of the pine plantation, where the cover type changes to aspen, is the northern boundary of the sale as indicated on the timber sale map.

### **2 - Timber Specifications**

#### **2.1 - Included Timber**

##### **2.1.3 - Cut tree marked unit(s) (12/08)**

Within Payment Unit(s) 1, trees are designated for cutting when marked with orange paint above and below stump height, regardless of merchantability.

#### **2.2 - Utilization**

##### **2.2.4 - Skidding length (2/09)**

Skidding of unlimbed tops or lengths over 17 feet is not permissible.

### **5 - Operations**

#### **5.2 - Conduct of Operations**

##### **5.2.1 - Slash**

###### **5.2.1.8 - Slash height (12/08)**

No slash or tree tops may exceed 24 inches in height.

##### **5.2.3 - Operating Restrictions**

###### **5.2.3.6 - Bark beetle restriction (12/08)**

In the event drought creates a high risk of pine bark beetle infestation, pine is not to be cut during the period March 1 through July 1, unless all portions of trees greater than two inches in diameter are removed from the sale area, reduced to chips, or treated to the satisfaction of the Unit Manager or his/her representative, within fifteen days of being severed from the stump. Pine log decks, pulpwood piles and treetops that are piled for chipping in the fall or winter within a 1/4 mile of susceptible sites must be removed before March 15. Residual slash must not be placed in piles or rows and must be spread over the site for quick drying. The Department of Natural Resources will exercise this specification if the risk of damage warrants.



LOST WOODCOCK PINE (049-10-01)

A timber sale contract for this LUMP SUM SEALED timber sale will be awarded the responsible bidder offering the highest sealed bid price. Bids must be at or above the following appraised price for each species:

<u>SPECIES</u>	<u>ESTIMATED VOLUME*</u>	<u>APPRAISED PRICE</u>
PULPWOOD		
RED PINE	354.00 CORDS	\$ 45.65/CORD

In addition, the successful bidder agrees to purchase the following species at the indicated appraised price:

<u>SPECIES</u>	<u>ESTIMATED VOLUME*</u>	<u>APPRAISED PRICE</u>
SAWLOGS		
RED PINE	8.90 MBF	\$ 108.00/MBF

\*The volumes are statistically estimated within plus (+) or minus (-) 18.54 percent. These estimated volumes are final and not subject to adjustment. Prospective bidders are urged to examine this timber and to make their own estimates of quantity and quality.

BOND AND PAYMENT SCHEDULE:

1. A bond in the amount of \$856.00, to insure faithful performance of the conditions of the contract, will be deposited by the successful bidder within 21 days of the sale award.
2. Cutting in any sale or unit without the required advance payment would be considered a trespass.
3. Total payment may be paid in advance or according to the following schedule:
  - (a) Ten percent (10%) of the sale value must be paid within 21 days of the sale award.
  - (b) The remainder is due before cutting begins.
4. If no cutting takes place, the 10% down payment will not be refunded.
5. Operations on the contract issued will terminate on December 31, 2012.



Michigan Department of Natural Resources – Forest, Mineral & Fire Management  
**TIMBER SALE MAP**

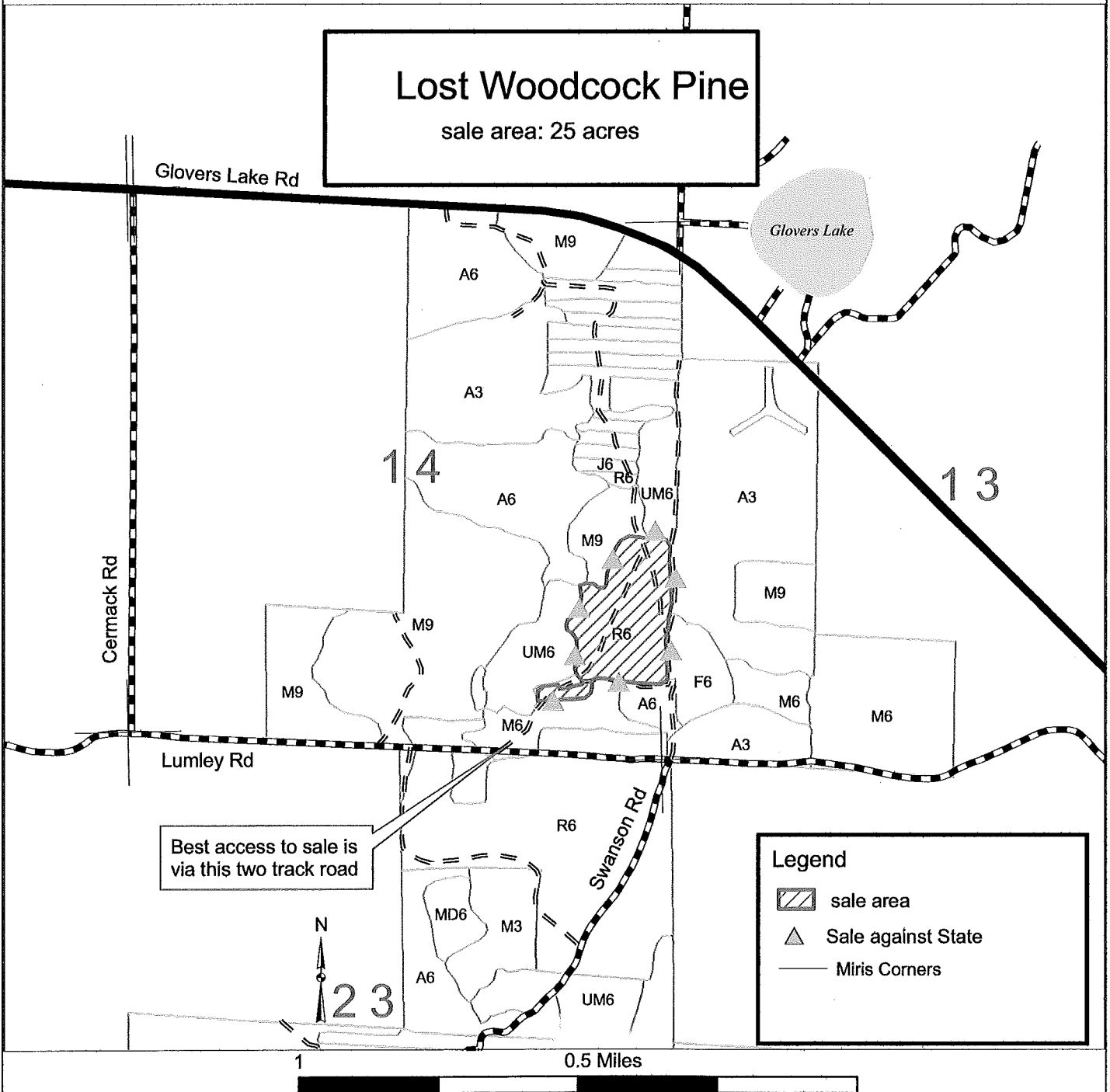
This information is provided by authority of Part 525 of Act 451, PA 1994, as amended.

SALE NUMBER	YEAR
49	2010
DATE	PAGE OF
6/7/10	1 1

FOREST MANAGEMENT UNIT	COUNTY	MAPPED BY
Traverse City	Manistee	Scott Lint
TOWNSHIP	RANGE	SECTION(S) AND SUBDIVISION(S)
TN 24	RW 15	14 - E1/2SE1/4

1:15,840
----------

Cover Type				Density	
A = Aspen	H = Hemlock	P = Lowland Poplar	V = Bog or Marsh	0 = Non Stocked	5 = Pole Timber Medium
B = Paper Birch	J = Jack Pine	Q = Mixed Swamp Cnfr	W = White Pine	1 = Seedling Sapling Poor	6 = Pole Timber Well
C = Cedar	L = Lowland Brush	R = Red Pine	X = Non Stocked	2 = Seedling Sapling Medium	7 = Saw Timber Poor
E = Swamp Hdwoods	M = Mpl, Bch, Brch	S = Black Spruce	Z = Water	3 = Seedling Sapling Well	8 = Saw Timber Medium
F = Spruce Fir	N = Marsh	T = Tamarack		4 = Pole Timber Poor	9 = Saw Timber Well
G = Grass	O = Oak	U = Upland Brush			



## **Sale Specific Conditions & Requirements**

**Sale Name: Lost Woodcock Pine    Sale Number: 61-049-10-01**

### **1 - Sale Area**

#### **1.2 - Boundaries**

##### **1.2.1 - Painted boundaries (12/08)**

The sale boundary is marked and identified by red paint. Exterior sale boundary lines against state are marked with red paint.

### **2 - Timber Specifications**

#### **2.1 - Included Timber**

##### **2.1.3 - Cut tree marked unit(s) (12/08)**

Within Payment Unit(s) 1, trees are designated for cutting when marked with orange paint above and below stump height, regardless of merchantability.

#### **2.2 - Utilization**

##### **2.2.4 - Skidding length (2/09)**

Skidding of unlimbed tops or lengths over 17 feet is not permissible.

### **5 - Operations**

#### **5.2 - Conduct of Operations**

##### **5.2.1 - Slash**

###### **5.2.1.8 - Slash height (12/08)**

No slash or tree tops may exceed 24 inches in height.

##### **5.2.3 - Operating Restrictions**

###### **5.2.3.6 - Bark beetle restriction (12/08)**

In the event drought creates a high risk of pine bark beetle infestation, pine is not to be cut during the period March 1 through July 1, unless all portions of trees greater than two inches in diameter are removed from the sale area, reduced to chips, or treated to the satisfaction of the Unit Manager or his/her representative, within fifteen days of being severed from the stump. Pine log decks, pulpwood piles and treetops that are piled for chipping in the fall or winter within a 1/4 mile of susceptible sites must be removed before March 15. Residual slash must not be placed in piles or rows and must be spread over the site for quick drying. The Department of Natural Resources will exercise this specification if the risk of damage warrants.

### **6 - Safety and Fire Prevention**

#### **6.2 - Signing**

**Sale Name: Lost Woodcock Pine    Sale Number: 61-049-10-01**

6.2.2 - Snowmobile trail posting (8/09)

The Purchaser is responsible for posting and maintaining caution signs on Lumley Road, a county seasonal road, prior to beginning operations during the snowmobile season (approximately December 1 to March 31). The trail must be posted to warn of logging activity and truck traffic. Signs must be removed when harvest operations are suspended or completed.



SCHECKS MIX (103-09-01)

A timber sale contract for this LUMP SUM SEALED timber sale will be awarded the responsible bidder offering the highest sealed bid price. Bids must be at or above the following appraised price for each species:

<u>SPECIES</u>	<u>ESTIMATED VOLUME*</u>	<u>APPRAISED PRICE</u>
SAWLOGS		
RED OAK	18.00 MBF	\$ 123.00/MBF
PULPWOOD		
Q. ASPEN	91.00 CORDS	\$ 6.05/CORD
MIXED OAK	89.00 CORDS	\$ 7.75/CORD

In addition, the successful bidder agrees to purchase the following species at the indicated appraised price:

<u>SPECIES</u>	<u>ESTIMATED VOLUME*</u>	<u>APPRAISED PRICE</u>
SAWLOGS		
RED MAPLE	.40 MBF	\$ 54.00/MBF
WHITE OAK	1.30 MBF	\$ 34.00/MBF
B.T. ASPEN	.80 MBF	\$ 39.00/MBF
JACK PINE	.40 MBF	\$ 15.00/MBF
PULPWOOD		
MIXED PINE	19.00 CORDS	\$ 4.25/CORD
MIX HARDWD	19.00 CORDS	\$ 6.40/CORD

\*These estimated volumes are final and not subject to adjustment. Prospective bidders are urged to examine this timber and to make their own estimates of quantity and quality.

BOND AND PAYMENT SCHEDULE:

1. A bond in the amount of \$188.00, to insure faithful performance of the conditions of the contract, will be deposited by the successful bidder within 21 days of the sale award.
2. Cutting in any sale or unit without the required advance payment would be considered a trespass.
3. Total payment may be paid in advance or according to the following schedule:
  - (a) Ten percent (10%) of the sale value must be paid within 21 days of the sale award.
  - (b) The 10% down payment will be credited towards the first unit cut.
  - (c) Payment for each of the following units must be made before cutting begins in that unit:

<u>PAYMENT UNIT NUMBER</u>	<u>PERCENT OF TOTAL SALE VALUE</u>
1	18%
2	82%
4. If no cutting takes place, the 10% down payment will not be refunded.
5. Operations on the contract issued will terminate on December 31, 2012.



Michigan Department of Natural Resources-Forest Management Division  
TIMBER SALE MAP

This information provided under authority of Part 525, Act 451 of 1994, as amended.

Sale No.	Year	Sale Type
103	09	01

State Forest and Forest Management Unit: <b>Pere Marquette - Traverse City</b>		Mapped By: <b>Tim Webb</b>		Date: <b>September 30, 2009</b>	
Marked By: <b>Tim Webb</b>		Township <b>26N</b>		Range <b>10W</b>	
Section(s) <b>13</b>		Subdivision <b>SENE, N1/2 SE, SWSE</b>		Scale: <b>1:7,920</b> <b>8" = 1 mile</b>	

Cover Type

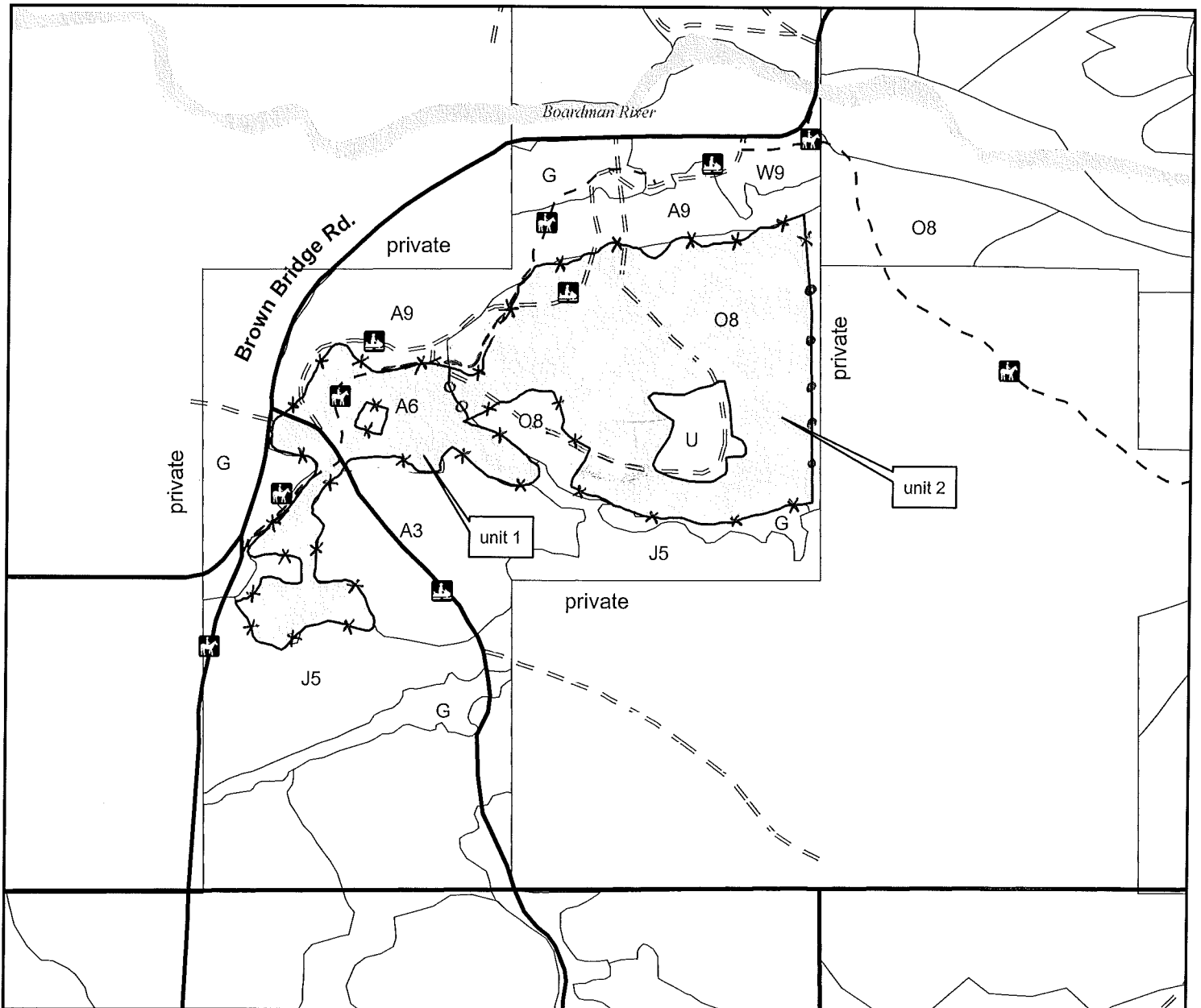
Density

A=Aspen	H=Hemlock	P=Lowland Poplar	V=Bog or Marsh	1=Non Stocked	7=Saw Timber Poor
B=Paper Birch	J=Jack Pine	Q=Mixed Swamp Confr	W=White Pine	2=Seedling Sapling Poor	8=Saw Timber Medium
C=Cedar	L=Lowland Brush	R=Red Pine	X=Non Stocked	3=Seedling Sapling Well	9=Saw Timber Well
E=Swamp Hdwoods	M=Mpl, Bch, Brch	S=Black Spruce	Z=Water	4=Pole Timber Poor	
F=Spruce Fir	N=Marsh	T=Tamarack	UM=Upl. Mixed	5=Pole Timber Medium	
G=Grass	O=Oak	U=Upland Brush	MD=Mixed Decid.	6=Pole Timber Well	
			MC=Mixed Conif.		

- harvest area
- red painted sale boundary line
- blue painted property line
- yellow painted payment unit line
- Shore-to-Shore Trail
- snowmobile trail

## Scheck's Mix

unit 1: 12 acres  
unit 2: 29 acres  
total: 41 acres



## Sale Specific Conditions & Requirements

Sale Name: Schecks Mix    Sale Number: 61-103-09-01

### 2 - Timber Specifications

#### 2.1 - Included Timber

##### 2.1.1 - Clearcut unit(s) with unmerchantable trees (4/09)

Within Payment Unit(s) 1, cut all aspen, jack pine, red maple, and cherry trees that are two (2) inches or more in diameter measured at a point four and one-half (4-1/2) feet above ground level regardless of merchantability. Do not cut any other species.

##### 2.1.3 - Cut tree marked unit(s) (12/08)

Within Payment Unit(s) 2, all trees are designated for cutting when marked with orange paint above and below stump height, regardless of merchantability.

#### 2.2 - Utilization

##### 2.2.2 - Chipping required (9/09)

Payment Unit 1 must be chip harvested to improve aesthetics adjacent to recreational trails. The purchaser has the option to produce sawlogs or pulpwood bolts, but the remaining portion of the trees must be chipped .

##### 2.2.4 - Skidding length (2/09)

Skidding of unlimbed tops or lengths over 17 feet is not permissible within payment unit 2 unless approved by the Unit Manager or his/her representative.

### 4 - Transportation

#### 4.1 - Construction

##### 4.1.6 - Road construction (1/09)

Construction of new roads or improvements of existing roads shall be done in such a way as to minimize the environmental and visual impacts. Merchantable trees shall be cut and utilized unless otherwise directed. Non-merchantable trees shall be severed and laid flat on the ground. Slash shall be scattered, and not left in windrows and kept a minimum of 20 feet back from the road edge. Stumps shall be set upright, not left on edge, and be moved at least 20 feet away from the road edge. Disturbed soil shall be feathered into the woods and not left in berms or windrows.

##### 4.1.7 - Road closure (4/07)

All new roads built into the sale must be blocked to vehicle traffic upon completion of the sale. Some existing roads may also need to be closed. In general, this will require constructing a four (4') foot high berm constructed of stumps and logs covered with earth. Contact the sale administrator for specific details of design and placement.

### 5 - Operations

#### 5.2 - Conduct of Operations

### 5.2.1 - Slash

#### 5.2.1.1 - Slash within sale area (2/04)

No trees are to be felled outside the sale area and all slash is to be kept at least 10 feet back from the blue paint line.

#### 5.2.1.8 - Slash height (12/08)

No slash or tree tops may exceed 36 inches in height.

### 5.2.3 - Operating Restrictions

#### 5.2.3.4 - Oak wilt restriction (12/08)

Within Payment Unit(s) 2, unless changed by written agreement, cutting, skidding, and hauling are not permitted during the period of April 15 to July 15. This is necessary to reduce the spread of oak wilt. For more information, contact the Unit Manager or his/her representative.

#### 5.2.3.6 - Bark beetle restriction (12/08)

In the event drought creates a high risk of pine bark beetle infestation, pine is not to be cut during the period March 1 through July 1, unless all portions of trees greater than two inches in diameter are removed from the sale area, reduced to chips, or treated to the satisfaction of the Unit Manager or his/her representative, within fifteen days of being severed from the stump. Pine log decks, pulpwood piles and treetops that are piled for chipping in the fall or winter within a 1/4 mile of susceptible sites must be removed before March 15. Residual slash must not be placed in piles or rows and must be spread over the site for quick drying. The Department of Natural Resources will exercise this specification if the risk of damage warrants.

### 5.2.4 - Dead and Down Creation

#### 5.2.4.1 - Dead and down creation, marked trees (12/08)

All trees marked with a painted orange "X" must be felled and left on site for wildlife habitat or stabilization of eroded slopes. Contact the sale administrator for specific details on placement of felled trees.

#### 5.2.40 - Pathway protection (6/09)

The Shore-to-Shore riding/hiking trail crosses the sale area as shown on the Timber Sale Map. Do not cut trees or damage posts with blue pathway markers. Maintain a 20-foot wide slash, debris, and rut free zone daily, using the pathway as the centerline. Do not run equipment down the pathway. Skidding across the trail may only occur in locations approved by the sale administrator.

#### 5.2.41 - Snowmobile trail protection (8/09)

A snowmobile trail crosses the sale area as shown on the Timber Sale Map. Do not cut or damage posts with orange trail markers or traffic control signs. If the trail is used, it must be maintained and restored to a condition equal to or better than before the sale. If the trail is used for hauling, it must be graded to the satisfaction of the Unit Manager or his/her representative prior to December 1st. The snowmobile trail may not be used for any timber sale operations from December 1 to March 31. Maintain a 20 foot wide slash, debris, and rut free zone daily using the snowmobile trail as the centerline. No decking of forest products will be permitted along the snowmobile trail. All stumps within 20 feet of the snowmobile trail must be cut at ground level.

### 5.4 - Soil Protection

**Sale Name: Schecks Mix    Sale Number: 61-103-09-01**

5.4.3 - Erosion control (12/08)

Skid trails or haul roads may require erosion control structures or berms per direction of the Unit Manager or his/her representative.

**6 - Safety and Fire Prevention**

**6.2 - Signing**

6.2.3 - Recreational trail posting (9/09)

The Purchaser is responsible for posting caution signs on both the snowmobile trail and the Shore-to-Shore trail prior to beginning operations. The trail must be posted at appropriate distances from the sale area to warn of logging activity and truck traffic at both ends of the trail. Signs must be removed when harvest operations are suspended or completed. The Purchaser must maintain the signs year round. The Purchaser will provide these signs.

**7 - Other Conditions**

**7.3 - Contract Modifications**

7.3.2 - Modification for oak wilt (2/05)

Within the sale area, there may be patches of oak wilt. If oak wilt is identified within the sale area, this contract may be modified. The following modifications could occur: time of cutting, species to cut, volume to harvest, or various others dealing with the treatment of oak wilt. If a species is not specified in this contract, it shall be paid for at the average price received for that species and product.



ALMOST HOME OAK (114-09-01)

A timber sale contract for this LUMP SUM SEALED timber sale will be awarded the responsible bidder offering the highest sealed bid price. Bids must be at or above the following appraised price for each species:

<u>SPECIES</u>	<u>ESTIMATED VOLUME*</u>	<u>APPRAISED PRICE</u>
SAWLOGS		
RED OAK	37.20 MBF	\$ 145.00/MBF
PULPWOOD		
B.T. ASPEN	107.00 CORDS	\$ 10.75/CORD
MIXED OAK	224.00 CORDS	\$ 9.80/CORD

In addition, the successful bidder agrees to purchase the following species at the indicated appraised price:

<u>SPECIES</u>	<u>ESTIMATED VOLUME*</u>	<u>APPRAISED PRICE</u>
SAWLOGS		
WHITE OAK	13.10 MBF	\$ 42.00/MBF
B.T. ASPEN	13.90 MBF	\$ 48.00/MBF
MIX HARDWD	4.10 MBF	\$ 62.00/MBF
PULPWOOD		
MIXED PINE	19.00 CORDS	\$ 5.55/CORD
MIX HARDWD	106.00 CORDS	\$ 8.15/CORD

\*The volumes are statistically estimated within plus (+) or minus (-) 13.33 percent. These estimated volumes are final and not subject to adjustment. Prospective bidders are urged to examine this timber and to make their own estimates of quantity and quality.

BOND AND PAYMENT SCHEDULE:

1. A bond in the amount of \$559.00, to insure faithful performance of the conditions of the contract, will be deposited by the successful bidder within 21 days of the sale award.
2. Cutting in any sale or unit without the required advance payment would be considered a trespass.
3. Total payment may be paid in advance or according to the following schedule:
  - (a) Ten percent (10%) of the sale value must be paid within 21 days of the sale award.
  - (b) The 10% down payment will be credited towards the first unit cut.
  - (c) Payment for each of the following units must be made before cutting begins in that unit:

<u>PAYMENT UNIT NUMBER</u>	<u>PERCENT OF TOTAL SALE VALUE</u>
1	57%
2	43%
4. If no cutting takes place, the 10% down payment will not be refunded.
5. Operations on the contract issued will terminate on December 31, 2012.



Michigan Department of Natural Resources-Forest Management Division

TIMBER SALE MAP

This information provided under authority of Part 525, Act 451 of 1994, as amended.

Sale No.	Year	Sale Type
114	09	01

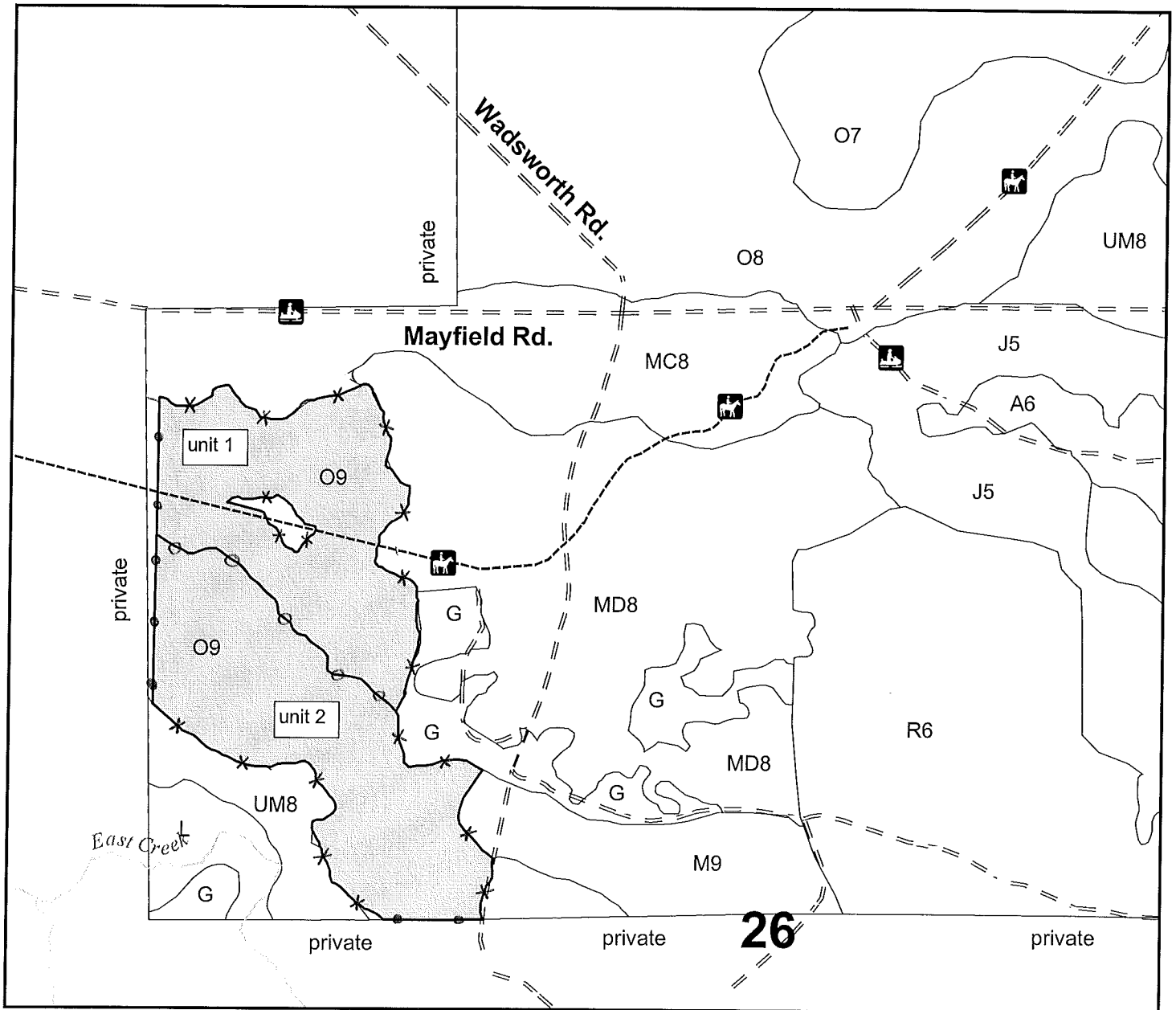
State Forest and Forest Management Unit: <b>Pere Marquette - Traverse City</b>		Mapped By: <b>Tim Webb</b>		Date: <b>September 30, 2009</b>	
Township	Range	Section(s)	Subdivision	Scale: 1:7,920	8" = 1 mile
26N	10W	26	W1/2 NW, SENW		

Cover Type				Density		
A=Aspen	H=Hemlock	P=Lowland Poplar	V=Bog or Marsh	1=Non Stocked	7=Saw Timber Poor	
B=Paper Birch	J=Jack Pine	Q=Mixed Swamp Confr	W=White Pine	2=Seedling Sapling Poor	8=Saw Timber Medium	
C=Cedar	L=Lowland Brush	R=Red Pine	X=Non Stocked	3=Seedling Sapling Well	9=Saw Timber Well	
E=Swamp Hdwoods	M=Mpl, Bch, Brch	S=Black Spruce	Z=Water	4=Pole Timber Poor		
F=Spruce Fir	N=Marsh	T=Tamarack	UM=Upl. Mixed	5=Pole Timber Medium		
G=Grass	O=Oak	U=Upland Brush	MD=Mixed Decid.	6=Pole Timber Well		
			MC=Mixed Conif.			

- harvest area
- red painted sale boundary line
- blue painted property line
- yellow painted payment unit line
- Shore-to-Shore Trail
- snowmobile trail

# Almost Home Oak

unit 1: 20.8 acres  
 unit 2: 24.2 acres  
 total: 45.0 acres





## Sale Specific Conditions & Requirements

**Sale Name: Almost Home Oak    Sale Number: 61-114-09-01**

### 2 - Timber Specifications

#### 2.1 - Included Timber

2.1.1 - Clearcut unit(s) with unmerchantable trees (4/09)

Within Payment Unit(s) 1, cut all trees that are two (2) inches or more in diameter measured at a point four and one-half (4-1/2) feet above ground level regardless of merchantability. Exceptions: Do not cut any trees marked with green paint; do not cut any pine seedlings or saplings unless necessary to facilitate harvest of included timber (see spec. 3.4.1).

2.1.3 - Cut tree marked unit(s) (12/08)

Within Payment Unit(s) 2, all trees are designated for cutting when marked with orange paint above and below stump height, regardless of merchantability.

#### 2.2 - Utilization

2.2.4 - Skidding length (2/09)

Skidding of unlimbed tops or lengths over 17 feet is not permissible unless approved by the Unit Manager or his/her representative.

### 3 - Payments

#### 3.4 - Damaged Timber

3.4.1 - Damaged timber (6/05)

General Condition and Requirement 3.4 Damaged Timber, defines liquidated damages for undesignated live merchantable trees which are cut or injured. In addition, extreme care should be taken to avoid damage to pine seedlings and saplings. Damage to residual trees (defined as breaking of the cambium layer, broken tops or bending of trees from their natural position) is not acceptable.

However, some minor felling of pine seedlings and saplings may be necessary to facilitate harvest and removal of included timber. Such trees must be cut at ground level and laid flat on the ground. Within the sale area, if more than 35% of the pine seedlings or saplings (1/4" to 4.5" DBH) within a specified portion of the sale area are damaged due to negligence or carelessness, liquidated damages will be assessed at \$100 per acre for all acreage within that specified portion of the sale area that was damaged.

### 4 - Transportation

#### 4.1 - Construction

**Sale Name: Almost Home Oak Sale Number: 61-114-09-01**

4.1.3 - Slash and earthen piles (8/04)

Piles or windrows of earth along roads and landings that have been widened or constructed shall be leveled. Slash from road maintenance or construction, including stumps, shall be dispersed throughout the sale.

4.1.7 - Road closure (4/07)

All new roads built into the sale must be blocked to vehicle traffic upon completion of the sale. In general, this will require constructing a four (4') foot high berm constructed of stumps and logs covered with earth. Contact the sale administrator for specific details of design and placement.

## **5 - Operations**

### **5.2 - Conduct of Operations**

#### **5.2.1 - Slash**

5.2.1.1 - Slash within sale area (2/04)

No trees are to be felled outside the sale area and all slash is to be kept at least 10 feet back from the blue paint line.

5.2.1.8 - Slash height (12/08)

No slash or tree tops may exceed 24 inches in height.

5.2.1.14 - Chipping of slash (10/08)

If tops are chipped, they must be skidded to the landing separately from the bole section of the tree. Skidding of tops must be done in such a way as to minimize damage to the residual trees. See related specs 2.2.4 - Skidding Length and 3.4.1 - Damaged Timber.

#### **5.2.3 - Operating Restrictions**

5.2.3.4 - Oak wilt restriction (12/08)

Within Payment Unit(s) 1 and 2, unless changed by written agreement, cutting, skidding, and hauling are not permitted during the period of April 15 to July 15. This is necessary to reduce the spread of oak wilt. For more information, contact the Unit Manager or his/her representative.

#### **5.2.4 - Dead and Down Creation**

5.2.4.1 - Dead and down creation, marked trees (12/08)

All trees marked with a painted orange "X" must be felled and left on site for wildlife.

5.2.38 - No decking against live trees (2/04)

Cut products may not be decked against unmarked or designated leave trees.

5.2.40 - Pathway protection (6/09)

The Shore-to-Shore riding/hiking trail crosses unit 1 as shown on the Timber Sale Map. Do not cut trees or damage posts with blue pathway markers. Maintain a 20-foot wide slash, debris, and rut free zone daily, using the pathway as the centerline. Do not run equipment down the pathway. Skidding across the trail may only occur in locations approved by the sale administrator.

**Sale Name: Almost Home Oak    Sale Number: 61-114-09-01**

5.2.41 - Snowmobile trail protection (8/09)

The Boardman Valley snowmobile trail follows Mayfield Road as shown on the Timber Sale Map. Do not cut or damage posts with orange trail markers or traffic control signs. If the trail is used, it must be maintained and restored to a condition equal to or better than before the sale. If the trail is used for hauling, it must be graded to the satisfaction of the Unit Manager or his/her representative prior to December 1st. If the trail road is to be used for hauling during the snowmobile season, then a snow covered base must be left on the trail.

**6 - Safety and Fire Prevention**

**6.2 - Signing**

6.2.3 - Recreational trail posting (9/09)

The Purchaser is responsible for posting caution signs on the Shore-to-Shore trail prior to beginning operations. The trail must be posted at appropriate distances from the sale area to warn of logging activity and truck traffic at both ends of the trail. Signs must be removed when harvest operations are suspended or completed. The Purchaser must maintain the signs during the snow-free season (approx. April 1 to Dec.1). The Purchaser will provide these signs.

**7 - Other Conditions**

**7.3 - Contract Modifications**

7.3.2 - Modification for oak wilt (2/05)

Within the sale area, there may be patches of oak wilt. If oak wilt is identified within the sale area, this contract may be modified. The following modifications could occur: time of cutting, species to cut, volume to harvest, or various others dealing with the treatment of oak wilt. If a species is not specified in this contract, it shall be paid for at the average price received for that species and product.



CATERPILLAR RED (043-10-01)  
T24N, R15W, SEC. 26, W1/2NE1/4, NENW.  
MANISTEE COUNTY

In response to the notice of sale to be held 2:00 p.m. on December 16, 2010, I am hereby submitting my sealed bid (firm offer) for the following forest products to be cut. Bids for individual species and total bid value must be at or above the appraised price. All non-responsive bid forms may be rejected.

<u>SPECIES</u>	<u>APPRAISED PRICE</u>	<u>BID PRICE</u>	<u>ESTIMATED VOLUME*</u>	<u>= VALUE</u>
SAWLOGS				
RED PINE	\$ 108.00/MBF	\$ _____ X	20.90 MBF	= \$ _____
PULPWOOD				
RED PINE	\$ 45.65/CORD	\$ _____ X	340.00 CORDS	= \$ _____
TOTAL BID VALUE \$				_____

\*These volumes are statistically estimated within plus (+) or minus (-) 23.32%. These estimated volumes are final and not subject to adjustment. Prospective bidders are urged to examine this timber and to make their own estimates of quantity and quality.

I understand that any or all bids may be rejected, and that the individual unit bid price will be the basis to determine total bid value. All bids must be signed and all bid items must be bid or the bid form may be rejected. I also understand that consideration and awarding a contract will be based upon my past performance and ability to complete the contract based upon equipment and manpower subject to my control.

\_\_\_\_\_  
(bidder's printed name)

\_\_\_\_\_  
(bidder's signature)

Address/Telephone \_\_\_\_\_

THE WINNING BIDDER MUST COMPLETE THE FORM ON THE REVERSE SIDE  
WITHIN 21 DAYS OF SALE AWARD



# TIMBER SALE VERIFICATION OF WORKER'S DISABILITY COMPENSATION ACT COMPLIANCE

As required by Act 317, P.A. 1969 (Worker's Compensation) and  
Part 525 of Act 451 of 1994, as amended.

### FOR DEPARTMENT USE ONLY

Sale Number (XX - XXX - XX - XX)

Forest Management Unit:

### VERIFICATION OF WORKER'S DISABILITY COMPENSATION ACT COMPLIANCE

- This verification must be completed and submitted within 21 days of contract award and prior to the issuance of the timber sale contract.
- In addition, if boxes 2B or 2C are checked, then Notice of Exclusion or Certificate of Insurance must be submitted within 21 days of the contract award and prior to the issuance of the timber sale contract.
- All Information must be typed or printed except for written signatures.

Please Check Appropriate Categories:

1. My business is organized as (you **must** check one of the boxes below):

- A.  Sole Proprietorship (individual)
- B.  Partnership
- C.  Corporation

2. You **must** check one of the boxes below:

- A.  I certify that my business is a sole proprietorship and it has no employees but the sole proprietor. I am not subject to the Worker's Compensation Laws.
- B.  I certify that my business has satisfied its obligation to the Worker's Compensation Act through the use of an approved Notice of Exclusion (BWC-337, Rev. 5/96). I will provide a copy of the Notice of Exclusion within 21 days of the contract award. (For questions or a copy of the BWC-337, please call the Worker's Compensation Bureau at 517-322-1195).
- C.  I certify that my business has a Worker's Compensation Policy. I will provide an original Certificate of Insurance within 21 days of the contract award.

3. If you have checked item 2(A) or 2(B), you **must** indicate the number of **both** full-time and part-time employees, other than yourself, including family members and active partners (if none, you must enter "0").

\_\_\_\_\_ Full-time Employees

\_\_\_\_\_ Part-time Employees

Name of Business		Federal ID (or) Social Security No.
Address		Telephone (       )
City	State	ZIP

I hereby certify that the above information is true and correct. I agree to notify the Michigan DNRE of any changes that occur in factors affecting my coverage during any of my present and future operations.

\_\_\_\_\_  
Signature of Owner or Authorized Representative

\_\_\_\_\_  
Title

\_\_\_\_\_  
Date

LADY SLIPPER PINE (046-10-01)  
T24N, R15W, SEC. 36, SWNE.  
MANISTEE COUNTY

In response to the notice of sale to be held 2:00 p.m. on December 16, 2010, I am hereby submitting my sealed bid (firm offer) for the following forest products to be cut. Bids for individual species and total bid value must be at or above the appraised price. All non-responsive bid forms may be rejected.

<u>SPECIES</u>	<u>APPRAISED PRICE</u>	<u>BID PRICE</u>	<u>ESTIMATED VOLUME*</u>	<u>= VALUE</u>
SAWLOGS				
RED PINE	\$ 108.00/MBF	\$ _____ X	17.90 MBF	= \$ _____
PULPWOOD				
RED PINE	\$ 45.65/CORD	\$ _____ X	215.00 CORDS	= \$ _____
TOTAL BID VALUE \$				_____

\*These volumes are statistically estimated within plus (+) or minus (-) 14.9%. These estimated volumes are final and not subject to adjustment. Prospective bidders are urged to examine this timber and to make their own estimates of quantity and quality.

I understand that any or all bids may be rejected, and that the individual unit bid price will be the basis to determine total bid value. All bids must be signed and all bid items must be bid or the bid form may be rejected. I also understand that consideration and awarding a contract will be based upon my past performance and ability to complete the contract based upon equipment and manpower subject to my control.

\_\_\_\_\_  
(bidder's printed name)

\_\_\_\_\_  
(bidder's signature)

Address/Telephone \_\_\_\_\_

THE WINNING BIDDER MUST COMPLETE THE FORM ON THE REVERSE SIDE  
WITHIN 21 DAYS OF SALE AWARD



**TIMBER SALE**  
**VERIFICATION OF WORKER'S DISABILITY**  
**COMPENSATION ACT COMPLIANCE**

*As required by Act 317, P.A. 1969 (Worker's Compensation) and  
Part 525 of Act 451 of 1994, as amended.*

FOR DEPARTMENT USE ONLY	
Sale Number (XX - XXX - XX - XX)	
Forest Management Unit:	

**VERIFICATION OF WORKER'S DISABILITY COMPENSATION ACT COMPLIANCE**

- This verification must be completed and submitted within 21 days of contract award and prior to the issuance of the timber sale contract.
- In addition, if boxes 2B or 2C are checked, then Notice of Exclusion or Certificate of Insurance must be submitted within 21 days of the contract award and prior to the issuance of the timber sale contract.
- All Information must be typed or printed except for written signatures.

Please Check Appropriate Categories:

1. My business is organized as (you **must** check one of the boxes below):
  - A.  Sole Proprietorship (individual)
  - B.  Partnership
  - C.  Corporation
2. You **must** check one of the boxes below:
  - A.  I certify that my business is a sole proprietorship and it has no employees but the sole proprietor. I am not subject to the Worker's Compensation Laws.
  - B.  I certify that my business has satisfied its obligation to the Worker's Compensation Act through the use of an approved Notice of Exclusion (BWC-337, Rev. 5/96). I will provide a copy of the Notice of Exclusion within 21 days of the contract award. (For questions or a copy of the BWC-337, please call the Worker's Compensation Bureau at 517-322-1195).
  - C.  I certify that my business has a Worker's Compensation Policy. I will provide an original Certificate of Insurance within 21 days of the contract award.
3. If you have checked item 2(A) or 2(B), you **must** indicate the number of **both** full-time and part-time employees, other than yourself, including family members and active partners (if none, you must enter "0").

\_\_\_\_\_ Full-time Employees

\_\_\_\_\_ Part-time Employees

Name of Business		Federal ID (or) Social Security No.	
Address		Telephone (        )	
City	State	ZIP	

*I hereby certify that the above information is true and correct. I agree to notify the Michigan DNRE of any changes that occur in factors affecting my coverage during any of my present and future operations.*

\_\_\_\_\_  
Signature of Owner or Authorized Representative

\_\_\_\_\_  
Title

\_\_\_\_\_  
Date



LOST WOODCOCK PINE (049-10-01)  
T24N, R15W, SEC. 14, E1/2SE1/4.  
 MANISTEE COUNTY

In response to the notice of sale to be held 2:00 p.m. on December 16, 2010, I am hereby submitting my sealed bid (firm offer) for the following forest products to be cut. Bids for individual species and total bid value must be at or above the appraised price. All non-responsive bid forms may be rejected.

<u>SPECIES</u>	<u>APPRAISED PRICE</u>	<u>BID PRICE</u>	<u>ESTIMATED VOLUME* = VALUE</u>
PULPWOOD			
RED PINE	\$ 45.65/CORD	\$ _____ X	354.00 CORDS = \$ _____
			SUBTOTAL 1 \$ _____

In addition, the successful bidder agrees to purchase the following species at the appraised price:

<u>SPECIES</u>	<u>APPRAISED PRICE</u>	<u>ESTIMATED VOLUME*</u>	<u>VALUE</u>
SAWLOGS			
RED PINE	\$ 108.00/MBF	8.90 MBF	= \$ 961.20
			SUBTOTAL 2 \$ <u>961.20</u>
SUBTOTAL 1 + SUBTOTAL 2 = TOTAL BID VALUE \$ _____			

\*These volumes are statistically estimated within plus (+) or minus (-) 18.54%. These estimated volumes are final and not subject to adjustment. Prospective bidders are urged to examine this timber and to make their own estimates of quantity and quality.

I understand that any or all bids may be rejected, and that the individual unit bid price will be the basis to determine total bid value. All bids must be signed and all bid items must be bid or the bid form may be rejected. I also understand that consideration and awarding a contract will be based upon my past performance and ability to complete the contract based upon equipment and manpower subject to my control.

\_\_\_\_\_  
 (bidder's printed name)

\_\_\_\_\_  
 (bidder's signature)

Address/Telephone \_\_\_\_\_

THE WINNING BIDDER MUST COMPLETE THE FORM ON THE REVERSE SIDE  
 WITHIN 21 DAYS OF SALE AWARD



**TIMBER SALE**  
**VERIFICATION OF WORKER'S DISABILITY**  
**COMPENSATION ACT COMPLIANCE**

*As required by Act 317, P.A. 1969 (Worker's Compensation) and  
Part 525 of Act 451 of 1994, as amended.*

**FOR DEPARTMENT USE ONLY**

Sale Number (XX - XXX - XX - XX)

Forest Management Unit:

**VERIFICATION OF WORKER'S DISABILITY COMPENSATION ACT COMPLIANCE**

- This verification must be completed and submitted within 21 days of contract award and prior to the issuance of the timber sale contract.
- In addition, if boxes 2B or 2C are checked, then Notice of Exclusion or Certificate of Insurance must be submitted within 21 days of the contract award and prior to the issuance of the timber sale contract.
- All Information must be typed or printed except for written signatures.

Please Check Appropriate Categories:

1. My business is organized as (you **must** check one of the boxes below):
  - A.  Sole Proprietorship (individual)
  - B.  Partnership
  - C.  Corporation
2. You **must** check one of the boxes below:
  - A.  I certify that my business is a sole proprietorship and it has no employees but the sole proprietor. I am not subject to the Worker's Compensation Laws.
  - B.  I certify that my business has satisfied its obligation to the Worker's Compensation Act through the use of an approved Notice of Exclusion (BWC-337, Rev. 5/96). I will provide a copy of the Notice of Exclusion within 21 days of the contract award. (For questions or a copy of the BWC-337, please call the Worker's Compensation Bureau at 517-322-1195).
  - C.  I certify that my business has a Worker's Compensation Policy. I will provide an original Certificate of Insurance within 21 days of the contract award.
3. If you have checked item 2(A) or 2(B), you **must** indicate the number of **both** full-time and part-time employees, other than yourself, including family members and active partners (if none, you must enter "0").

\_\_\_\_\_ Full-time Employees

\_\_\_\_\_ Part-time Employees

Name of Business		Federal ID (or) Social Security No.
Address		Telephone (      )
City	State	ZIP

*I hereby certify that the above information is true and correct. I agree to notify the Michigan DNRE of any changes that occur in factors affecting my coverage during any of my present and future operations.*

\_\_\_\_\_  
Signature of Owner or Authorized Representative

\_\_\_\_\_  
Title

\_\_\_\_\_  
Date

SCHECKS MIX (103-09-01)  
 T26N, R10W, SEC. 13, SENE, N1/2SE, SWSE.  
 GRAND TRAVERSE COUNTY

In response to the notice of sale to be held 2:00 p.m. on December 16, 2010, I am hereby submitting my sealed bid (firm offer) for the following forest products to be cut. Bids for individual species and total bid value must be at or above the appraised price. All non-responsive bid forms may be rejected.

<u>SPECIES</u>	<u>APPRAISED PRICE</u>	<u>BID PRICE</u>	<u>ESTIMATED VOLUME* = VALUE</u>
<u>SAWLOGS</u>			
RED OAK	\$ 123.00/MBF	\$ _____ X	18.00 MBF = \$ _____
<u>PULPWOOD</u>			
Q. ASPEN	\$ 6.05/CORD	\$ _____ X	91.00 CORDS = \$ _____
MIXED OAK	\$ 7.75/CORD	\$ _____ X	89.00 CORDS = \$ _____
SUBTOTAL 1			\$ _____

In addition, the successful bidder agrees to purchase the following species at the appraised price:

<u>SPECIES</u>	<u>APPRAISED PRICE</u>	<u>ESTIMATED VOLUME*</u>	<u>VALUE</u>
<u>SAWLOGS</u>			
RED MAPLE	\$ 54.00/MBF	.40 MBF	= \$ 21.60
WHITE OAK	\$ 34.00/MBF	1.30 MBF	= \$ 44.20
B.T. ASPEN	\$ 39.00/MBF	.80 MBF	= \$ 31.20
JACK PINE	\$ 15.00/MBF	.40 MBF	= \$ 6.00
<u>PULPWOOD</u>			
MIXED PINE	\$ 4.25/CORD	19.00 CORDS	= \$ 80.75
MIX HARDWD	\$ 6.40/CORD	19.00 CORDS	= \$ 121.60
SUBTOTAL 2			\$ <u>305.35</u>
SUBTOTAL 1 + SUBTOTAL 2 = TOTAL BID VALUE \$ _____			

\*These estimated volumes are final and not subject to adjustment. Prospective bidders are urged to examine this timber and to make their own estimates of quantity and quality.

I understand that any or all bids may be rejected, and that the individual unit bid price will be the basis to determine total bid value. All bids must be signed and all bid items must be bid or the bid form may be rejected. I also understand that consideration and awarding a contract will be based upon my past performance and ability to complete the contract based upon equipment and manpower subject to my control.

\_\_\_\_\_  
 (bidder's printed name)

\_\_\_\_\_  
 (bidder's signature)

Address/Telephone \_\_\_\_\_

THE WINNING BIDDER MUST COMPLETE THE FORM ON THE REVERSE SIDE  
 WITHIN 21 DAYS OF SALE AWARD



**TIMBER SALE**  
**VERIFICATION OF WORKER'S DISABILITY**  
**COMPENSATION ACT COMPLIANCE**

*As required by Act 317, P.A. 1969 (Worker's Compensation) and  
Part 525 of Act 451 of 1994, as amended.*

FOR DEPARTMENT USE ONLY	
Sale Number (XX - XXX - XX - XX)	
Forest Management Unit:	

**VERIFICATION OF WORKER'S DISABILITY COMPENSATION ACT COMPLIANCE**

- This verification must be completed and submitted within 21 days of contract award and prior to the issuance of the timber sale contract.
- In addition, if boxes 2B or 2C are checked, then Notice of Exclusion or Certificate of Insurance must be submitted within 21 days of the contract award and prior to the issuance of the timber sale contract.
- All Information must be typed or printed except for written signatures.

Please Check Appropriate Categories:

1. My business is organized as (you **must** check one of the boxes below):
  - A.  Sole Proprietorship (individual)
  - B.  Partnership
  - C.  Corporation
2. You **must** check one of the boxes below:
  - A.  I certify that my business is a sole proprietorship and it has no employees but the sole proprietor. I am not subject to the Worker's Compensation Laws.
  - B.  I certify that my business has satisfied its obligation to the Worker's Compensation Act through the use of an approved Notice of Exclusion (BWC-337, Rev. 5/96). I will provide a copy of the Notice of Exclusion within 21 days of the contract award. (For questions or a copy of the BWC-337, please call the Worker's Compensation Bureau at 517-322-1195).
  - C.  I certify that my business has a Worker's Compensation Policy. I will provide an original Certificate of Insurance within 21 days of the contract award.
3. If you have checked item 2(A) or 2(B), you **must** indicate the number of **both** full-time and part-time employees, other than yourself, including family members and active partners (if none, you must enter "0").

\_\_\_\_\_ Full-time Employees

\_\_\_\_\_ Part-time Employees

Name of Business		Federal ID (or) Social Security No.	
Address		Telephone (       )	
City	State	ZIP	

*I hereby certify that the above information is true and correct. I agree to notify the Michigan DNRE of any changes that occur in factors affecting my coverage during any of my present and future operations.*

\_\_\_\_\_  
Signature of Owner or Authorized Representative

\_\_\_\_\_  
Title

\_\_\_\_\_  
Date

ALMOST HOME OAK (114-09-01)  
 T26N, R10W, SEC. 26, W1/2NW, SENW.  
 GRAND TRAVERSE COUNTY

In response to the notice of sale to be held 2:00 p.m. on December 16, 2010, I am hereby submitting my sealed bid (firm offer) for the following forest products to be cut. Bids for individual species and total bid value must be at or above the appraised price. All non-responsive bid forms may be rejected.

<u>SPECIES</u>	<u>APPRAISED PRICE</u>	<u>BID PRICE</u>	<u>ESTIMATED VOLUME*</u>	<u>= VALUE</u>
<u>SAWLOGS</u>				
RED OAK	\$ 145.00/MBF	\$ _____ X	37.20 MBF	= \$ _____
<u>PULPWOOD</u>				
B.T. ASPEN	\$ 10.75/CORD	\$ _____ X	107.00 CORDS	= \$ _____
MIXED OAK	\$ 9.80/CORD	\$ _____ X	224.00 CORDS	= \$ _____
SUBTOTAL 1				\$ _____

In addition, the successful bidder agrees to purchase the following species at the appraised price:

<u>SPECIES</u>	<u>APPRAISED PRICE</u>	<u>ESTIMATED VOLUME*</u>	<u>VALUE</u>
<u>SAWLOGS</u>			
WHITE OAK	\$ 42.00/MBF	13.10 MBF	= \$ 550.20
B.T. ASPEN	\$ 48.00/MBF	13.90 MBF	= \$ 667.20
MIX HARDWD	\$ 62.00/MBF	4.10 MBF	= \$ 254.20
<u>PULPWOOD</u>			
MIXED PINE	\$ 5.55/CORD	19.00 CORDS	= \$ 105.45
MIX HARDWD	\$ 8.15/CORD	106.00 CORDS	= \$ 863.90
SUBTOTAL 2			\$ 2,440.95

SUBTOTAL 1 + SUBTOTAL 2 = TOTAL BID VALUE \$ \_\_\_\_\_

\*These volumes are statistically estimated within plus (+) or minus (-) 13.33%. These estimated volumes are final and not subject to adjustment. Prospective bidders are urged to examine this timber and to make their own estimates of quantity and quality.

I understand that any or all bids may be rejected, and that the individual unit bid price will be the basis to determine total bid value. All bids must be signed and all bid items must be bid or the bid form may be rejected. I also understand that consideration and awarding a contract will be based upon my past performance and ability to complete the contract based upon equipment and manpower subject to my control.

\_\_\_\_\_  
 (bidder's printed name)

\_\_\_\_\_  
 (bidder's signature)

Address/Telephone \_\_\_\_\_

THE WINNING BIDDER MUST COMPLETE THE FORM ON THE REVERSE SIDE  
 WITHIN 21 DAYS OF SALE AWARD



FOR DEPARTMENT USE ONLY	
Sale or Permit No	
Year:	Type:
Forest Area:	

**TIMBER SALE  
VERIFICATION OF WORKER'S DISABILITY  
COMPENSATION ACT COMPLIANCE**

*As required by Act 317, P.A. 1969 (Worker's Compensation) and Part 525 of Act 451 of 1994, as amended.*

**VERIFICATION OF WORKER'S DISABILITY COMPENSATION ACT COMPLIANCE**

- This verification must be completed and submitted within 21 days of contract award and prior to the issuance of the timber sale contract.
- In addition, if boxes 2B or 2C are checked, then Notice of Exclusion or Certificate of Insurance must be submitted within 21 days of the contract award and prior to the issuance of the timber sale contract.
- All Information must be typed or printed except for written signatures.

Please Check Appropriate Categories:

1. My business is organized as (you **must** check one of the boxes below):
  - A.  Sole Proprietorship (individual)
  - B.  Partnership
  - C.  Corporation
2. You **must** check one of the boxes below:
  - A.  I certify that my business is a sole proprietorship and it has no employees but the sole proprietor. I am not subject to the Worker's Compensation Laws.
  - B.  I certify that my business has satisfied its obligation to the Worker's Compensation Act through the use of an approved Notice of Exclusion (BWC-337, Rev. 5/96). I will provide a copy of the Notice of Exclusion within 21 days of the contract award. (For questions or a copy of the BWC-337, please call the Worker's Compensation Bureau at 517-322-1195).
  - C.  I certify that my business has a Worker's Compensation Policy. I will provide an original Certificate of Insurance within 21 days of the contract award.
3. If you have checked item 2(A) or 2(B), you **must** indicate the number of **both** full and part time employees other than yourself including family members and active partners (if none, you must enter "0").

\_\_\_\_\_ Full Time Employees

\_\_\_\_\_ Part Time Employees

Name of Business		Federal ID (or) Social Security No.	
Address		Telephone No. (       )	
City	State	Zip + 4	

I hereby certify that the above information is true and correct. I agree to notify the DNR of any changes that occur in factors affecting my coverage during any of my present and future operations.

\_\_\_\_\_  
Signature of Owner or Authorized Representative

\_\_\_\_\_  
Title

\_\_\_\_\_  
Date