



**DEPARTMENT OF NATURAL RESOURCES
STATE OF MICHIGAN**

TIMBER SALE PROSPECTUS #5025

REVISION NOTICE #1 - March 24, 2014

SCHEDULED SALE DATE AND TIME: 3:00 p.m. (local time) on Thursday, April 24, 2014

LOCATION: NEWBERRY MGMT UNIT, PO BOX 428, 5666 STATE HWY M-123, NEWBERRY, MI 49868

This prospectus has been modified with the following changes.

The sale map for the FINAL HARVEST MIX timber sale (42-027-13-01) has been updated. Please use the attached Timber Sale Maps when bidding on this sale and disregard the original Timber Sale Map sent with the prospectus. Page 2 of the Map had updates that did not make the original prospectus.

We apologize for any inconvenience this may have caused. If you need assistance, please contact Keith Magnusson at 906-293-3293 ext. 4740.



Michigan Department of Natural Resources - Forest Resources Division

TIMBER SALE MAP

This information provided by authority of Part 525, 1994 PA 451, as amended.

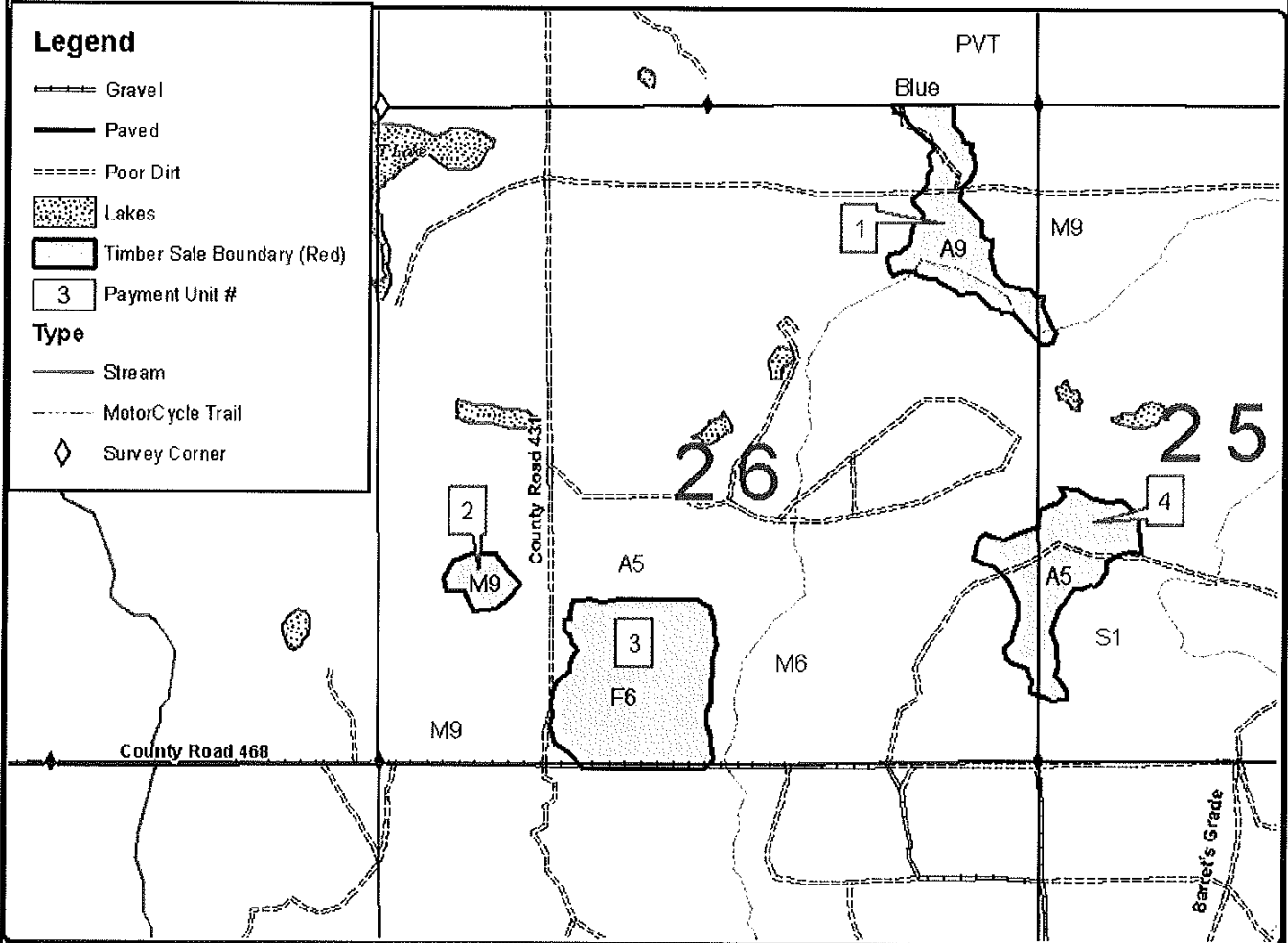
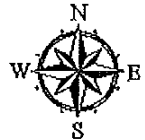
Sale Number	Year
42-027	13

Forest Management Unit Newberry	County Luce	Mapped By S Kentner	Date 09/30/2013	Page 1	of 2
Township 46N	Range 11W	Section(s) and Subdivision(s) Sec. 26: E1/2 NE1/4, E1/2 SE1/4, SESW, E1/2 SW1/4 Sec. 25: W1/2 SW1/4	Scale 1:15,840		

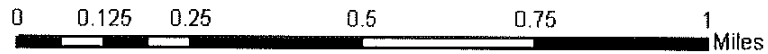
Cover Type				Density	
A = Aspen	H = Hemlock	N = Marsh	U = Upland Brush	0 = Non Stocked	5 = Pole Timber Medium
B = Paper Birch	J = Jack Pine	O = Oak	UM = Upland Mixed	1 = Seedling Sapling Poor	6 = Pole Timber Well
C = Cedar	L = Lowland Brush	P = Lowland Poplar	V = Bog or Marsh	2 = Seedling Sapling Medium	7 = Saw Timber Poor
D = Tread Bog	LM = Lowland Mixed	Q = Mixed Swamp Conifer	W = White Pine	3 = Seedling Sapling Well	8 = Saw Timber Medium
E = Swamp Hoewoods	M = Mpl. Bch, Bch	R = Red Pine	X = Non Stocked	4 = Pole Timber Poor	9 = Saw Timber Well
F = Spruce Fir	MC = Mixed Conifer	S = Black Spruce	Z = Water		
G = Grass	MD = Mixed Deciduous	T = Tamarack			

Final Harvest Mix

130 Acres



PU	Acres
1	12
2	5
3	37
4	23





Michigan Department of Natural Resources - Forest Resources Division

TIMBER SALE MAP

This information provided by authority of Part 525, 1994 PA 451, as amended.

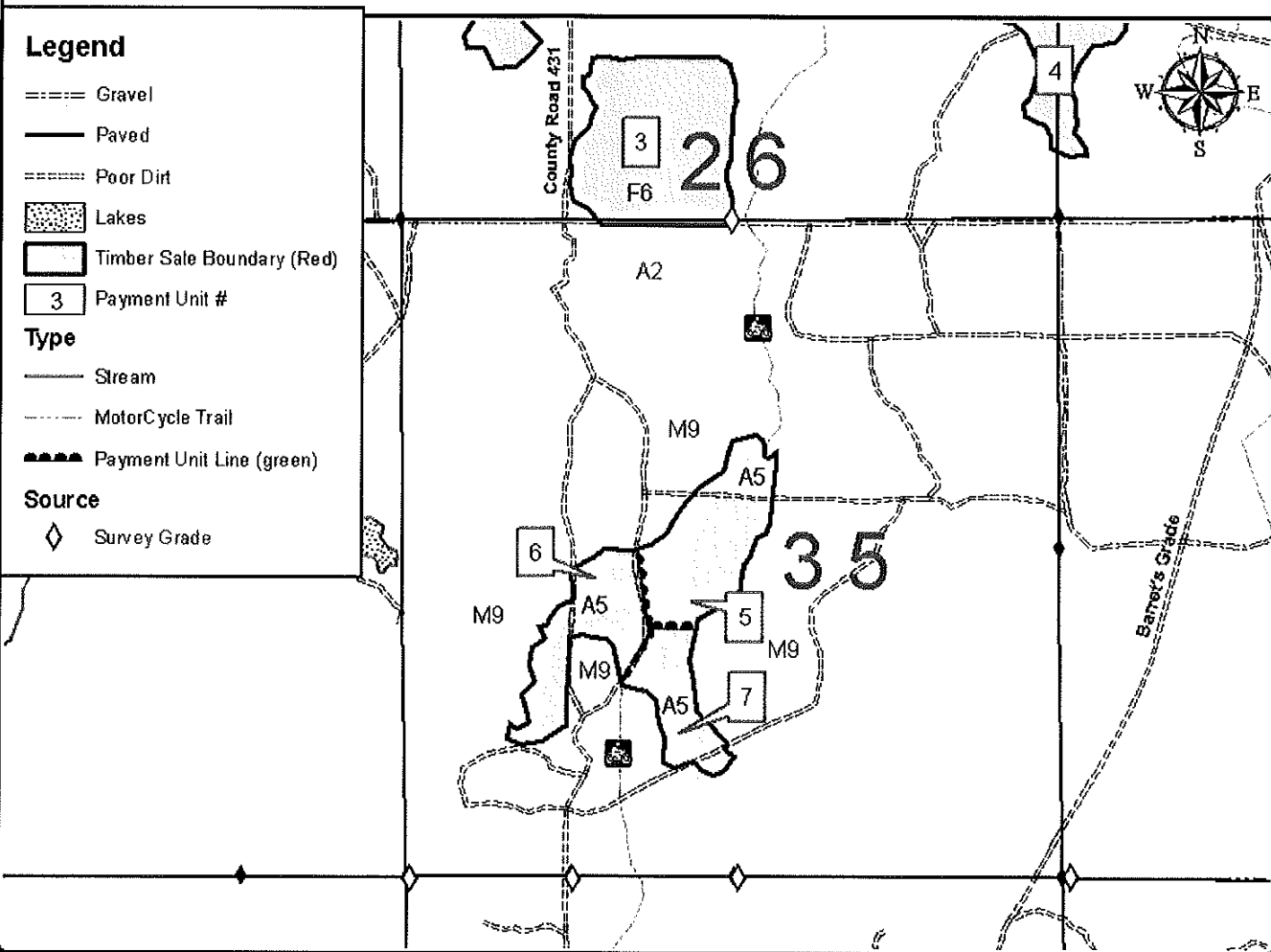
Sale Number	Year
42-027	13

Forest Management Unit Newberry	County Luce	Mapped By S Kentner	Date 09/30/2013	Page 2	of 2
Township 46N	Range 11W	Section(s) and Subdivision(s) Sec. 35: SW1/4, SENW, SWNE, NWSE	Scale 1:15,840		

Cover Type				Density	
A = Aspen	H = Hemlock	N = Marsh	U = Upland Brush	0 = Non Stocked	5 = Pole Timber Medium
B = Paper Birch	J = Jack Pine	O = Oak	UM = Upland Mixed	1 = Seedling Sapling Poor	6 = Pole Timber Well
C = Cedar	L = Lowland Brush	P = Lowland Poplar	V = Bog or Marsh	2 = Seedling Sapling Medium	7 = Saw Timber Poor
D = Tread Bog	LM = Lowland Mixed	Q = Mixed Swamp Conifer	W = White Pine	3 = Seedling Sapling Well	8 = Saw Timber Medium
E = Swamp Hardwoods	M = Mpl. Bch, Brch	R = Red Pine	X = Non Stocked	4 = Pole Timber Poor	9 = Saw Timber Well
F = Spruce Fir	MC = Mixed Conifer	S = Black Spruce	Z = Water		
G = Grass	MD = Mixed Deciduous	T = Tamarack			

Final Harvest Mix

130 Acres



PU	Acres
5	22
6	18
7	13

