



**DEPARTMENT OF NATURAL RESOURCES
STATE OF MICHIGAN**

TIMBER SALE PROSPECTUS #5287

REVISION NOTICE #1 - December 22, 2014

SCHEDULED SALE DATE AND TIME: 10:00 a.m. (local time) on Tuesday, January 13, 2015

LOCATION: ATLANTA MGMT UNIT, 13501 M-33, ATLANTA, MI 49709

This prospectus has been modified with the following changes.

The sale map for the FLAT IRON OAK timber sale (54-003-14-01) has been updated. Please use the attached sale map when bidding on this sale and disregard the original sale map sent with the prospectus.

The sale map for the AVERY HILLZBILLY timber sale (54-028-14-01) has been updated. Please use the attached sale map when bidding on this sale and disregard the original sale map sent with the prospectus.

The sale map for the LTD ASPEN timber sale (54-029-14-01) has been updated. Please use the attached sale map when bidding on this sale and disregard the original sale map sent with the prospectus.

GOSHAWK PINE timber sale (54-035-14-01) conditions and requirements have been modified. Payments Units 1 and 2 were reversed in the conditions and requirements of the original offering. Corrected versions of conditions 2.1.1, 2.1.3, 2.2.2, 2.2.3, 2.2.6, 3.4.1, and 5.2.3.3 are listed below.

2.1.1 - Clearcut unit(s) with unmerchantable trees (6/14)

Within Payment Unit(s) 1, cut all trees that are two (2) inches or more at DBH.

2.1.3 - Cut tree marked unit(s) (12/08)

Within Payment Unit(s) 2, all trees are designated for cutting when marked with orange paint above and below stump height, regardless of merchantability.

2.2.2 - Chipping required (5/14)

Payment Unit 1 must be chip harvested to facilitate subsequent planting operations. The Purchaser has the option to produce sawlogs or pulpwood bolts, but the remaining portion of the trees must be chipped and hauled. Products may be produced as roundwood and forwarded to decking areas in final product length, but the tops must be left intact and skidded to the landing for chipping in order to minimize the amount of residual slash left in area. Do not chip 1/6 to 1/3 of the slash from harvested trees (tree tops and limbs less than four inches in diameter).

2.2.3 - Stump heights (4/07)

Stump heights within Payment Unit 1 shall not exceed 6 inches for all trees. This is in order to facilitate planting operations. A written waiver of this requirement may be obtained if wet summer weather makes winter logging necessary.

2.2.6 - Roundwood operation required (5/07)

The skidding of whole trees or tree segments with limbs attached is prohibited within Payment Unit 2. All products must be produced as roundwood and forwarded to existing roads or landing areas in final product length. Cabin logs and Utility poles may be skidded at final product length as well.

3.4.1 - Damaged timber (6/14)

General Condition and Requirement 3.4 Damaged Timber, defines liquidated damages for undesignated live merchantable trees which are cut or injured.

No damage is acceptable to merchantable trees. Within the Payment Unit 2, if more than 5% of trees (> 4.5" DBH) within a specified area of the sale are damaged, liquidated damages will be assessed for all trees damaged. Rates will be in accordance with General Condition and Requirement 3.4 Damaged Timber.

5.2.3.3 - Bark slippage restriction (3/09)

Within Payment Unit(s) 2, unless changed by written agreement, cutting and skidding are not permitted during the period of April 15 to July 15. This restriction is because of bark slippage.

We apologize for any inconvenience this may have caused. If you need assistance, please contact Cody Stevens at 989-785-4251 ext. 5240.



TIMBER SALE MAP

This information provided by authority of Part 525, 1994 PA 451, as amended.

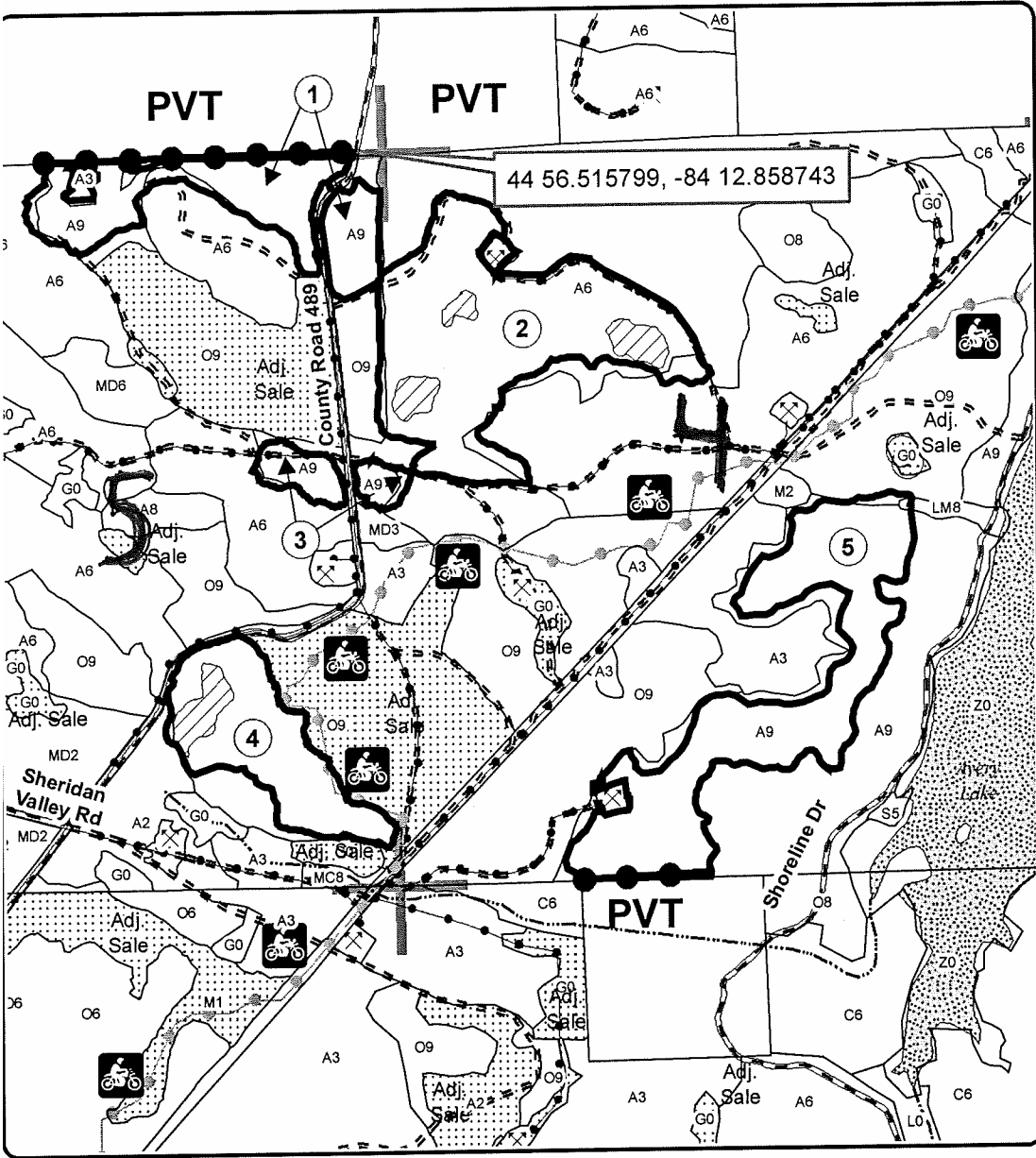
Sale Number	Year
54 - 028	14

Forest Management Unit	County	Mapped By	Date	Page	of
Atlanta Forest Management Unit	Montmorency	St. Pierre	09/10/2014	1	1
Township	Range	Section(s) and Subdivision(s)	Scale		
29N	02E	Sec.04 NW, E1/2SW, W1/2SE Sec.05 E1/2	1:15,840		

Cover Type				Density	
A = Aspen	H = Hemlock	N = Marsh	U = Upland Brush	0 = Non Stocked	5 = Pole Timber Medium
B = Paper Birch	J = Jack Pine	O = Oak	UM = Upland Mixed	1 = Seedling Sapling Poor	6 = Pole Timber Well
C = Cedar	L = Lowland Brush	P = Lowland Poplar	V = Bog or Marsh	2 = Seedling Sapling Medium	7 = Saw Timber Poor
D = Treed Bog	LM = Lowland Mixed	Q = Mixed Swamp Conifer	W = White Pine	3 = Seedling Sapling Well	8 = Saw Timber Medium
E = Swamp Hdwoods	M = Mpl, Bch, Brch	R = Red Pine	X = Non Stocked	4 = Pole Timber Poor	9 = Saw Timber Well
F = Spruce Fir	MC = Mixed Conifer	S = Black Spruce	Z = Water		
G = Grass	MD = Mixed Deciduous	T = Tamarack			

PU	Acres	PU	Acres
1	26	4	23
2	51	5	49
3	7		

Avery Hillzbilly Compartment 007 156 Acres



Legend

Sale Boundary

- Private Line (Blue)
- Against State (Red)
- Retention Area
- Adjacent Stand Boundaries
- Adjacent Timber Sale
- Lakes
- Section Corners
- Gravel
- Poor Dirt
- Recreational Trail
- Pipeline; Powerline
- Surface Oil & Gas Wells



TIMBER SALE MAP

This information provided by authority of Part 525, 1994 PA 451, as amended.

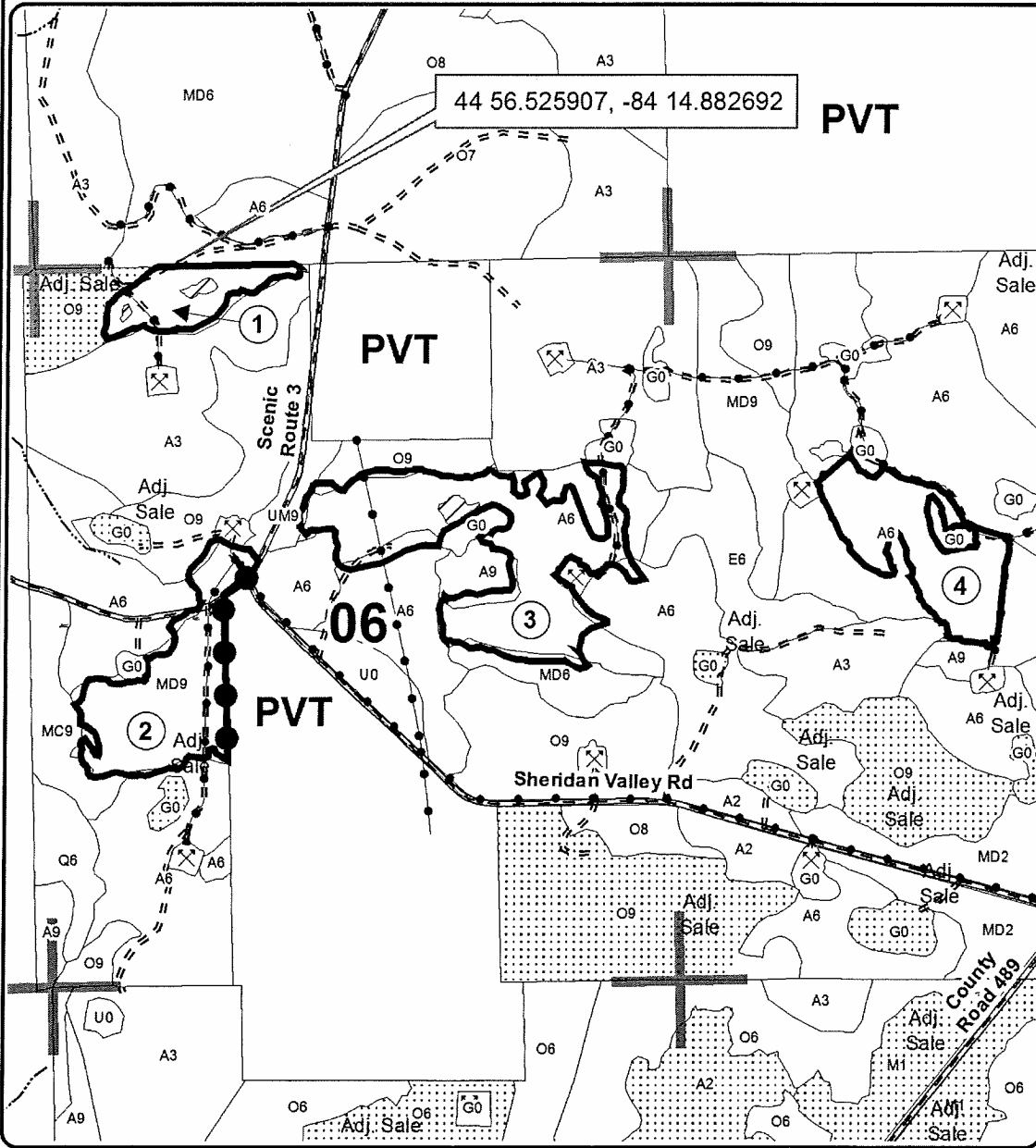
Sale Number	Year
54 - 029	14

Forest Management Unit	County	Mapped By	Date	Page	of
Atlanta Forest Management Unit	Montmorency	St. Pierre	09/10/2014	1	1
Township	Range	Section(s) and Subdivision(s)	Scale		
29N	02E	Sec.05 S1/2NW, NENESW Sec.06 NW, S1/2NE, N1/2S1/2	1:15,840		

Cover Type				Density	
A = Aspen	H = Hemlock	N = Marsh	U = Upland Brush	0 = Non Stocked	5 = Pole Timber Medium
B = Paper Birch	J = Jack Pine	O = Oak	UM = Upland Mixed	1 = Seedling Sapling Poor	6 = Pole Timber Well
C = Cedar	L = Lowland Brush	P = Lowland Poplar	V = Bog or Marsh	2 = Seedling Sapling Medium	7 = Saw Timber Poor
D = Tread Bog	LM = Lowland Mixed	Q = Mixed Swamp Conifer	W = White Pine	3 = Seedling Sapling Well	8 = Saw Timber Medium
E = Swamp Hdwoods	M = Mpl, Bch, Brch	R = Red Pine	X = Non Stocked	4 = Pole Timber Poor	9 = Saw Timber Well
F = Spruce Fir	MC = Mixed Conifer	S = Black Spruce	Z = Water		
G = Grass	MD = Mixed Deciduous	T = Tamarack			

PU	Acres	PU	Acres
1	10	4	20
2	23		
3	38		

LTD Aspen
Compartment 007
91 Acres



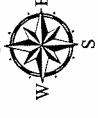
Legend

- Sale Boundary**
- Private Line (Blue)
- ▭ Against State (Red)
- ▨ Retention Area
- ▭ Adjacent Stand Boundaries
- ⋯ Adjacent Timber Sale
- ▬ Section Corners
- Gravel
- == Poor Dirt
- Pipeline; Powerline
- ⊗ Surface Oil & Gas Wells

0 0.125 0.25 0.5 0.75 1

Flat Iron Oak Compartment 007

143 Acres



PU	Acres	PU	Acres
1	10	4	21
2	32	5	27
3	11	6	42

Sale Number 54-003	Year 14
Date 12/08/2014	Page of 1 1
Scale 1:15,840	

Michigan Department of Natural Resources - Forest Resources Division

TIMBER SALE MAP

This information provided by authority of Part 525, 1994 PA 451, as amended.

Map of
County
Montmorency
Cruised By Vanoss Forestry

Section(s) and Subdivision(s)
04: W/2SW 05: NE/4, SW/4, E/2SE 06: N/2NW, SESE

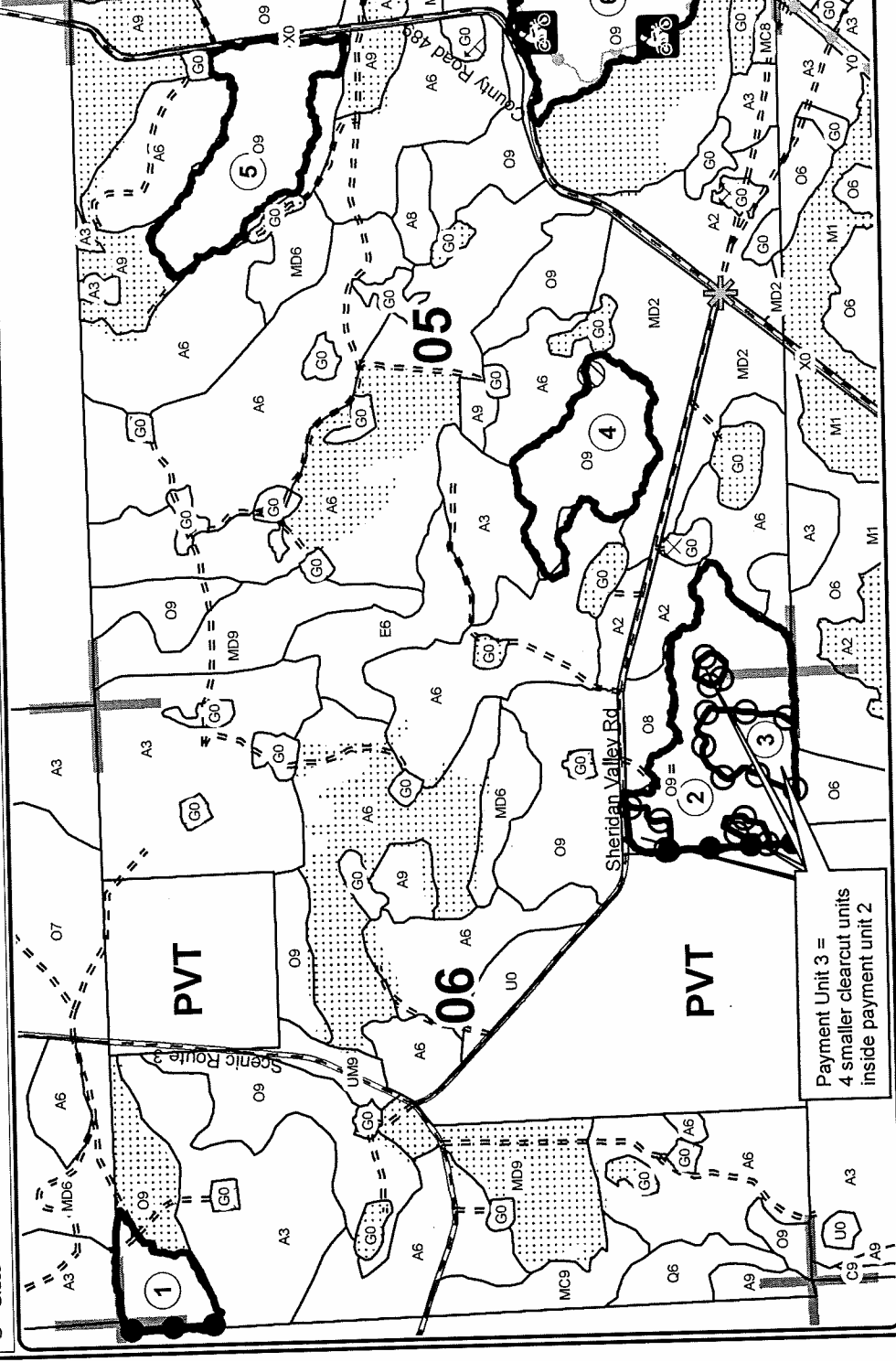
Forest Management Unit
Atlanta

Range
02E

Township
29N

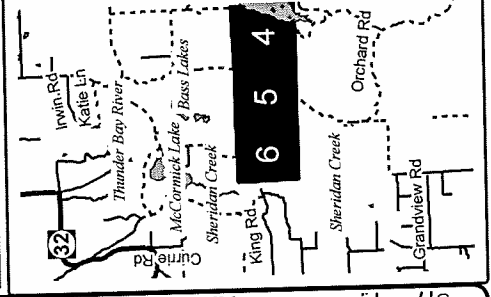
Scale
1:15,840

Cover Type	
A = Aspen	H = Hemlock
B = Paper Birch	J = Jack Pine
C = Cedar	L = Lowland Brush
D = Tread Bog	LM = Lowland Mixed
E = Swamp Hdwoods	M = Mpl, Bch, Birch
F = Spruce Fir	MC = Mixed Conifer
G = Grass	MD = Mixed Deciduous
	N = Marsh
	O = Oak
	P = Lowland Poplar
	Q = Mixed Swamp Conifer
	R = Red Pine
	S = Black Spruce
	T = Tamarack
	U = Upland Brush
	UM = Upland Mixed
	V = Bog or Marsh
	W = White Pine
	X = Non Stocked
	Z = Water



Legend

- Sale Boundary
- Against State (Red)
- Payment Unit (Green)
- Private Line (Blue)
- Special Protection Area
- Adjacent Stand Boundaries
- Adjacent Timber Sale
- PU_Label
- Highway Paved
- Gravel
- Poor Dirt
- Recreational Trail
- Section Corners
- 84 13.388641 44 55.721611



Locator Map
1:200,000



Payment Unit 3 =
4 smaller clearcut units
inside payment unit 2