



**DEPARTMENT OF NATURAL RESOURCES
STATE OF MICHIGAN**

TIMBER SALE PROSPECTUS #5713

SCHEDULED SALE DATE AND TIME: 11:00 a.m. (local time) on September 21, 2016.

LOCATION: GLADWIN MGMT UNIT, 801 N SILVERLEAF, GLADWIN, MI 48624.

PROSPECTUS NOTE: The bidder is advised to inspect the sale area and review the location, estimated volumes, operating costs and contract terms of proposed sales. Please be aware that some landowners may request 60 days or more notice for access across their land.

Notice is hereby given that bids will be received by the Unit Manager, GLADWIN MANAGEMENT UNIT, for certain timber on the following described lands:

Comp 31 Mix (73-003-16)

Gladwin County, Advertised Price \$23,995.95, 72.2 Acres, Hardwood, Red Pine.

SALE NOTE: This 72 acre timber sale is accessed off a paved road called Mohawk Trail. The sale is comprised of four cut tree marked units. There is a berm that will have to be leveled to access Unit 1; then rebuilt. A DNR gate is located on the north bound State two track that accesses Unit's 2, 3, & 4. The Midland to Mackinaw Boy Scout Trail traverses through Unit 4, and is marked with blue painted trees. These trees are not to be cut. A round-wood operation is required in Unit 2, which is a lowland pine stand. As much of the sale is seasonally wet and three of the Units are narrow, landing locations have been recommended near the higher ridged areas, typically along the access roads, and have been designated on the map.

BID INSTRUCTIONS (VER. 07/27/2016):

1. Scheduled Bid Location, Date, and Time (2/11)

Bids must be received by the Unit Manager, GLADWIN OFFICE, 801 N SILVERLEAF, GLADWIN, MI 48624, no later than 11:00 a.m. (local time) on September 21, 2016. For further information concerning this sale, contact PATRICK MOHNEY at 989-426-9205 extension 7640.

2. Bidder's Qualifications (5/16)

Purchaser shall obtain workers compensation insurance to cover claims under Michigan's Worker's Disability Compensation Act of 1969 or similar employee benefit act of any other state applicable to an employee. If all or part of a timber sale was prepared by a private contractor, the contractor and that contractor's company are not permitted to bid on the timber sale contract. Bids will not be accepted from individuals or companies appearing on the DNR/FRD No-Bid List. This list contains the names of purchasers who previously failed to execute a contract within 21-days or who have a history of poor performance.

3. Preparation of Sealed Bids (5/16)

Bid Forms may be completed online thru Michigan DNR Timber Sale Online Bidding (OLB) at www.michigan.gov/timberbidding or by completing the hardcopy Bid Form found in the Timber Sale Prospectus. Hardcopy Bid Forms shall be manually signed in ink. Registration in OLB is considered your 'signature' for all bids submitted thru that system. Bid prices must be entered for each species and product in the Bid Price column for all material subject to bidding and all fill-in blanks must be completed. If erasures or other changes appear on the hardcopy Bid Form, each erasure or change must be initialed by the person signing the bid.

4. Submission of Sealed Bids (5/16)

Bid forms may be obtained from the Unit Manager or thru OLB. Bids may be submitted hardcopy or thru OLB. All hardcopy bids must be submitted on the bid form and in an envelope clearly identified as described in this section. NOTE: Only one bid form per bid envelope. Sealed bids must be submitted to the Unit office designated in the prospectus and must be submitted at or prior to the time established in the prospectus. The envelope should show on the outside (a) the sale name or number and (b) the date and time of bid opening, as shown in the prospectus. Bids received after the time specified in the sale prospectus are late bids and will be rejected.

It is possible for a bidder to submit multiple bids on a single sale. For example, a bid may be submitted hardcopy and a bid may be submitted thru OLB. Or, two bidders from the same company could both submit bids on the same sale. If this were to happen, the State would accept all bids received and award the contract accordingly. All bidding and contractual requirements would apply to all bids received.

5. Public Opening of Sealed Bids (7/16)

If conditions permit, the sealed bids will be publicly opened and posted at the time and place set in the prospectus.

If a bidder, present at a bid opening, has submitted bids on more than one sale, that bidder may withdraw their unopened bid envelopes or announce the withdrawal of their online bid after being declared the successful bidder on one sale.

6. Award of Contract (1/11)

Award of the contract will be made to the Bidder whose bid, conforming to the prospectus, is most advantageous to the State of Michigan on the basis of total value at rates bid for the estimated quantities. The State reserves the right to reject any bid or waive any minor irregularity in bids received. A written award mailed (or otherwise furnished) to the successful Bidder shall be deemed to result in a binding contract without further action by either party.

7. Down Payment (1/11)

The Bidder to whom award is made must make a down payment within 21 days of the sale award. The amount of the down payment will be calculated as shown in the Bond and Payment Schedule of this prospectus. Only cash may be used to meet this requirement.

8. Performance Security (1/11)

As guarantee of faithful performance, a cash bond, certificate of deposit, surety bond or irrevocable letter of credit (LOC) is required within 21 days of the sale award. The amount of the performance security is shown in the Bond and

Payment Schedule of this prospectus. If an LOC or surety is used, the coverage must extend for at least 6 months beyond the contract expiration.

9. Timber Sale Contract (9/14)

Additional conditions and requirements common to all timber sales are listed on the timber sale contract (R4031) and are available on line at www.michigan.gov/timber. Contact the Unit Manager for additional information or a sample contract. Within 21 days of the date of the award letter, the bidder must sign the contract and provide the required down payment, performance security, and verification of worker's disability compensation. The down payment and performance security shall be in accordance with the provisions of the timber sale contract, in the sums stated in this prospectus. If these actions are not taken, then the Bidder, the Bidder's corporation, and the corporation's principals may not be permitted to bid on State timber sales for a period of 1 year. In addition, the Bidder certifies that if awarded this contract, the Bidder will complete the timber sale contract in accordance with its terms and any modifications thereof including requirements to purchase, cut, and remove the included timber by the expiration date.

10. Disclaimer of Estimates and Bidder's Warranty of Inspection (7/16)

Before submitting this bid, the Bidder is advised and cautioned to inspect the sale area, review the requirements of the sale contract, and take other steps as may be reasonably necessary to ascertain the location, estimated volumes, construction estimates, and operating costs of the proposed sale. Failure to do so will not relieve the Bidder from responsibility for completing the contract.

The Bidder warrants that this bid is submitted solely on the basis of the Bidder's examination and inspection of the quality and quantity of the timber offered for sale and the Bidder's opinion of the value thereof and the costs of recovery. No reliance should be placed on the State of Michigan's estimates of timber quality, quantity or costs of recovery. Bidder further acknowledges that the State of Michigan: (i) expressly disclaims any warranty of fitness of timber for any purpose; (ii) offers this timber as is without any warranty of quality (merchantability) or quantity and (iii) expressly disclaims any warranty as to the quantity or quality of timber sold.

11. Certification and Chain-of-Custody (10/14)

Unless otherwise indicated in the contract under section 7 – Other Conditions of the Sale Specific Conditions & Requirements, the area encompassed by this timber sale is certified to the standards of the Forest Stewardship Council (FSC) - Certificate #SCS-FM/COC-00090N and the Sustainable Forestry Initiative (SFI) - Certificate # NSF-SFIS-5Y031-SF5. Forest products from this sale may be delivered to the mill as "FSC 100% and / or SFI certified" as long as the contractor hauling the forest products is chain-of-custody (COC) certified or covered under a COC certificate from the destination mill. The purchaser is responsible for maintaining COC after leaving the sale area.

KEITH CREAGH
Director

TIMBER SALE INFORMATION

Comp 31 Mix (73-003-16)

Gladwin County (Advertised Price \$23,995.95)

SALE NOTE: This 72 acre timber sale is accessed off a paved road called Mohawk Trail. The sale is comprised of four cut tree marked units. There is a berm that will have to be leveled to access Unit 1; then rebuilt. A DNR gate is located on the north bound State two track that accesses Unit's 2, 3, & 4. The Midland to Mackinaw Boy Scout Trail traverses through Unit 4, and is marked with blue painted trees. These trees are not to be cut. A round-wood operation is required in Unit 2, which is a lowland pine stand. As much of the sale is seasonally wet and three of the Units are narrow, landing locations have been recommended near the higher ridged areas, typically along the access roads, and have been designated on the map.

A timber sale contract for this lump sum, sealed bid timber sale will be awarded to the responsible bidder offering the highest sealed bid price. Bids must be at or above the following advertised price for each species:

<u>PRODUCTS & SPECIES</u>	<u>ESTIMATED UNITS*</u>	<u>ADVERTISED PRICE</u>
Sawtimber		
Mixed Aspen	11.50 MBF	\$ 100.00 / MBF
Mixed Oak	2.80 MBF	\$ 150.00 / MBF
Red Maple	39.30 MBF	\$ 55.00 / MBF
Red Pine	34.60 MBF	\$ 172.00 / MBF
White Pine	1.50 MBF	\$ 94.00 / MBF
Pulpwood		
Jack Pine	22.00 Cords	\$ 21.05 / Cord
Mixed Aspen	151.00 Cords	\$ 22.00 / Cord
Mixed Hardwood	32.00 Cords	\$ 15.35 / Cord
Mixed Oak	26.00 Cords	\$ 15.75 / Cord
Red Maple	228.00 Cords	\$ 15.35 / Cord
Red Pine	111.00 Cords	\$ 52.85 / Cord
White Pine	6.00 Cords	\$ 20.05 / Cord

* The total volume is statistically estimated within plus (+) or minus (-) 21.11 percent. The estimated units are final and not subject to adjustment. Prospective bidders are urged to examine this timber and to make their own estimates of quantity and quality.

BOND AND PAYMENT SCHEDULE:

1. A bond in the amount of \$1,200.00 to insure faithful performance of the conditions of the contract will be deposited by the successful bidder within 21 days of the sale award.
2. Cutting in any sale or unit without the required advance payment would be considered a trespass.
3. Total payment must be paid in advance or according to the following schedule:
 - (a) Ten percent (10%) of the sale value must be paid within 21 days of the sale award.
 - (b) The 10% down payment will be credited towards the first unit cut.
4. If no cutting takes place, the 10% down payment will not be refunded.
5. Operations on the contract issued will terminate on 09/30/2018.

Description of Timber by Payment Unit (PU)

PU	MARKET GROUP	PRODUCT	QUANTITY	UNIT	ACRES	ADVERTISE PRICE	
1	Mixed Aspen	Sawtimber	4.6	MBF	9.4	\$4,087.85	
	<i>Quaking Aspen</i>		4.6	<i>MBF</i>			
	Mixed Oak		2.1	MBF			
	<i>BI/R/Hybrid Oak</i>		1.2	<i>MBF</i>			
	<i>Red Oak</i>		0.9	<i>MBF</i>			
	Red Maple		12.1	MBF			
	<i>Red Maple</i>		12.1	<i>MBF</i>			
	Red Pine		1.6	MBF			
	<i>Red Pine</i>		1.6	<i>MBF</i>			
	White Pine		1.5	MBF			
	<i>White Pine</i>	1.5	<i>MBF</i>				
	Mixed Aspen	Pulpwood	36.0	Cords			
	<i>Quaking Aspen</i>		36.0	<i>Cords</i>			
	Mixed Hardwood		9.0	Cords			
	<i>Paper Birch</i>		<i>Sawtimber</i>	1.7			<i>MBF</i>
	<i>Paper Birch</i>			6.0			<i>Cords</i>
	Mixed Oak		<i>Pulpwood</i>	10.0			Cords
	<i>BI/R/Hybrid Oak</i>			2.0			<i>Cords</i>
	<i>Red Oak</i>			8.0			<i>Cords</i>
	Red Maple			46.0			Cords
	<i>Red Maple</i>			46.0			<i>Cords</i>
	Red Pine			6.0			Cords
	<i>Red Pine</i>			6.0			<i>Cords</i>
White Pine	6.0		Cords				
<i>White Pine</i>	6.0	<i>Cords</i>					
2	Red Pine	Sawtimber	33.0	MBF	15.8	\$11,688.35	
	<i>Red Pine</i>		33.0	<i>MBF</i>			
	Jack Pine	Pulpwood	22.0	Cords			
	<i>Jack Pine</i>		<i>Sawtimber</i>	4.2			<i>MBF</i>
	<i>Jack Pine</i>			<i>Pulpwood</i>			14.0
	Red Pine	<i>Pulpwood</i>	105.0	Cords			
<i>Red Pine</i>	105.0		<i>Cords</i>				
3	Mixed Aspen	Sawtimber	1.1	MBF	9.9	\$1,507.70	
	<i>B. T. Aspen</i>		1.1	<i>MBF</i>			
	Red Maple		5.7	MBF			
	<i>Red Maple</i>	5.7	<i>MBF</i>				
	Mixed Aspen	Pulpwood	13.0	Cords			
	<i>B. T. Aspen</i>		11.0	<i>Cords</i>			
	<i>Balsam Poplar</i>		2.0	<i>Cords</i>			
	Mixed Hardwood		6.0	Cords			
	<i>Paper Birch</i>		<i>Sawtimber</i>	1.3			<i>MBF</i>
	<i>Paper Birch</i>			<i>Pulpwood</i>			3.0
	Red Maple		<i>Pulpwood</i>	46.0			Cords
<i>Red Maple</i>	46.0	<i>Cords</i>					
4	Mixed Aspen	Sawtimber	5.8	MBF	37.1	\$6,712.05	
	<i>B. T. Aspen</i>		3.3	<i>MBF</i>			
	<i>Quaking Aspen</i>		2.5	<i>MBF</i>			
	Mixed Oak		0.7	MBF			
	<i>Red Oak</i>		0.7	<i>MBF</i>			
	Red Maple		21.5	MBF			
	<i>Red Maple</i>	21.5	<i>MBF</i>				
	Mixed Aspen	Pulpwood	102.0	Cords			
	<i>B. T. Aspen</i>		21.0	<i>Cords</i>			
	<i>Balsam Poplar</i>		2.0	<i>Cords</i>			
	<i>Quaking Aspen</i>		79.0	<i>Cords</i>			
	Mixed Hardwood		17.0	Cords			

Description of Timber by Payment Unit (PU), con't

PU	MARKET GROUP	PRODUCT	QUANTITY	UNIT	ACRES	ADVERTISE PRICE
4 con't	<i>Paper Birch</i>	<i>Sawtimber</i>	1.0	<i>MBF</i>		
	<i>Black Ash</i>	<i>Pulpwood</i>	6.0	<i>Cords</i>		
	<i>Paper Birch</i>		9.0	<i>Cords</i>		
	Mixed Oak		16.0	Cords		
	<i>Bl/R/Hybrid Oak</i>		8.0	<i>Cords</i>		
	<i>Red Oak</i>		8.0	<i>Cords</i>		
	Red Maple		136.0	Cords		
	<i>Red Maple</i>		136.0	<i>Cords</i>		
TOTAL:			187.6	MBF		
TOTAL:			1,136.0	Cords		

Sale Specific Conditions & Requirements

Sale Name: Comp 31 Mix

Sale Number: 73-003-16 Seq#: 1

1 - Sale Area

1.2 - Boundaries

1.2.1 - Painted boundaries (1/14)

The sale boundary and Payment Unit boundaries are marked and identified by red and yellow paint. Exterior sale boundary lines against state are marked with red paint. Interior Payment Unit boundaries are marked with yellow paint. The painted boundary line trees are not Included Timber and are to be protected. Yellow painted trees designating an interior Payment Unit boundary are only to be cut when all surrounding Payment Units have been paid.

2 - Timber Specifications

2.1 - Included Timber

2.1.3 - Cut tree marked unit(s) (12/08)

Within Payment Unit(s) 1, 2, 3, and 4, all trees are designated for cutting when marked with orange paint above and below stump height, regardless of merchantability. In addition, all aspen 2" DBH and greater are designated for cutting in Payment Units 1, 3, and 4.

EXCEPTION: Within Payment Unit 4, DO NOT CUT any trees marked with blue paint; these are Boy Scout trail marked trees.

2.2 - Utilization

2.2.3 - Stump heights (4/07)

Stump heights within the Sale Area shall be cut as low to the ground as possible. Unless approved by the Unit Manager or his/her representative, stump heights shall not exceed 6 inches for trees greater than 10 inches DBH and 4 inches for trees smaller than 10 inches DBH.

2.2.6 - Roundwood operation required (5/07)

The skidding of whole trees or tree segments with limbs attached is prohibited within Payment Unit 2. All products must be produced as roundwood and forwarded to existing roads or landing areas in final product length.

2.2.9 - No chipping permitted (12/08)

Within Payment Unit(s) 2, no chipping is permitted. This to facilitate reforestation.

3 - Payments

3.4 - Damaged Timber

3.4.1 - Damaged timber (6/14)

General Condition and Requirement 3.4 Damaged Timber, defines liquidated damages for undesignated live merchantable trees which are cut or injured. In addition, extreme care should be taken to avoid damage to tree seedlings and saplings.

Within the sale area, if more than 25% of the tree seedlings or saplings (1/4" to 4.5" DBH) within a specified portion of the sale area are damaged, liquidated damages will be assessed at \$300 per acre for all acreage within that specified portion of the sale area that was damaged.

No damage is acceptable to merchantable undesignated trees. Within the sale area, if more than 5% of undesignated trees (> 4.5" DBH) within a specified area of the sale are damaged, liquidated damages will be assessed for all trees damaged. Rates will be in accordance with General Condition and Requirement 3.4 Damaged Timber.

4 - Transportation

4.1 - Construction

4.1.3 - Slash and earthen piles (8/04)

Piles or windrows of earth along roads and landings that have been widened or constructed shall be leveled. Slash from road maintenance or construction, including stumps, shall be dispersed throughout the sale.

4.1.12 - No new roads (1/12)

No new roads will be permitted in any Payment Unit. All operations are limited to existing roads. Skid trails only will be allowed.

4.2 - Maintenance

4.2.3 - Road maintenance (8/13)

The following road maintenance is required: Within 60 days of completion of hauling, or if no hauling occurs for 60 days, the road must be maintained and graded. This includes cleaning of drainage areas, grading, crowning and filling with gravel, if necessary. Damages will be assessed if grading/repair does not occur.

4.4 - Access

4.4.3 - Access gate (12/08)

The access gate must be locked at all times. This is to prevent someone other than the Purchaser from going through the gate and being locked in.

5 - Operations

5.2 - Conduct of Operations

5.2.1 - Slash

5.2.1.11 - Slash for reforestation (5/07)

To facilitate reforestation, Payment Unit 2 shall be left with slash evenly distributed. Bunched tops within the cutting area shall be broken up and scattered. Stumps shall be cut low to the ground. Processing sites shall not be left with a compacted layer of slash; tops from these sites shall be hauled back into the cut area and scattered.

5.2.2 - Hazard Trees/Snags

5.2.2.1 - Den trees (2/04)

Obvious hollow and/or den trees shall be protected and left standing unless they are a safety hazard.

5.2.3 - Operating Restrictions

5.2.3.1 - Operating restrictions (9/11)

Within Payment Unit(s) 1, 2, 3, and 4, unless approved by the Unit Manager or his/her representative, cutting and skidding are limited to conditions when soils are either dry or frozen. This restriction is because of seasonal wet soil conditions.

5.2.31 - Landing locations (9/13)

Recommended landing areas are marked on the timber sale map with the letter "L". Landings must be confined to these designated sites unless otherwise authorized by the Unit Manager or his/her representative.

5.4 - Soil Protection

5.4.1 - Rutting restriction, general (1/09)

Operations are to cease immediately if equipment and weather conditions result in rutting of roads and skid trails which is 12 inches or greater in depth and 50 feet in length. The Unit Manager or his/her representative may restrict hauling and/or skidding if ruts exceed the specified depth. With the Unit Manager or his/her representative's approval, the Purchaser may return to the area when the risk of rutting has decreased.

6 - Safety and Fire Prevention

6.2 - Signing

6.2.1 - Road posting (9/09)

The Purchaser is responsible for posting and maintaining caution signs on Mohawk Trail prior to beginning operations. The road must be posted at appropriate distances from the sale area to warn of logging activity and truck traffic. Signs must be removed when harvest operations are suspended or completed. The Purchaser will provide these signs.



TIMBER SALE MAP

This information provided by authority of Part 525, 1994 PA 451, as amended.

Sale Number	Year
73-003	16

Forest Management Unit	County	Mapped By	Date	Page	of
Gladwin Management Unit	Gladwin	Richard Myrick	07/21/2016	1	1
Township	Range	Section(s) and Subdivision(s)	Scale		
20N	01E	S22; SE1/4, S23; SWSW, S26; NWNW; S27; SESE	1:15,840		

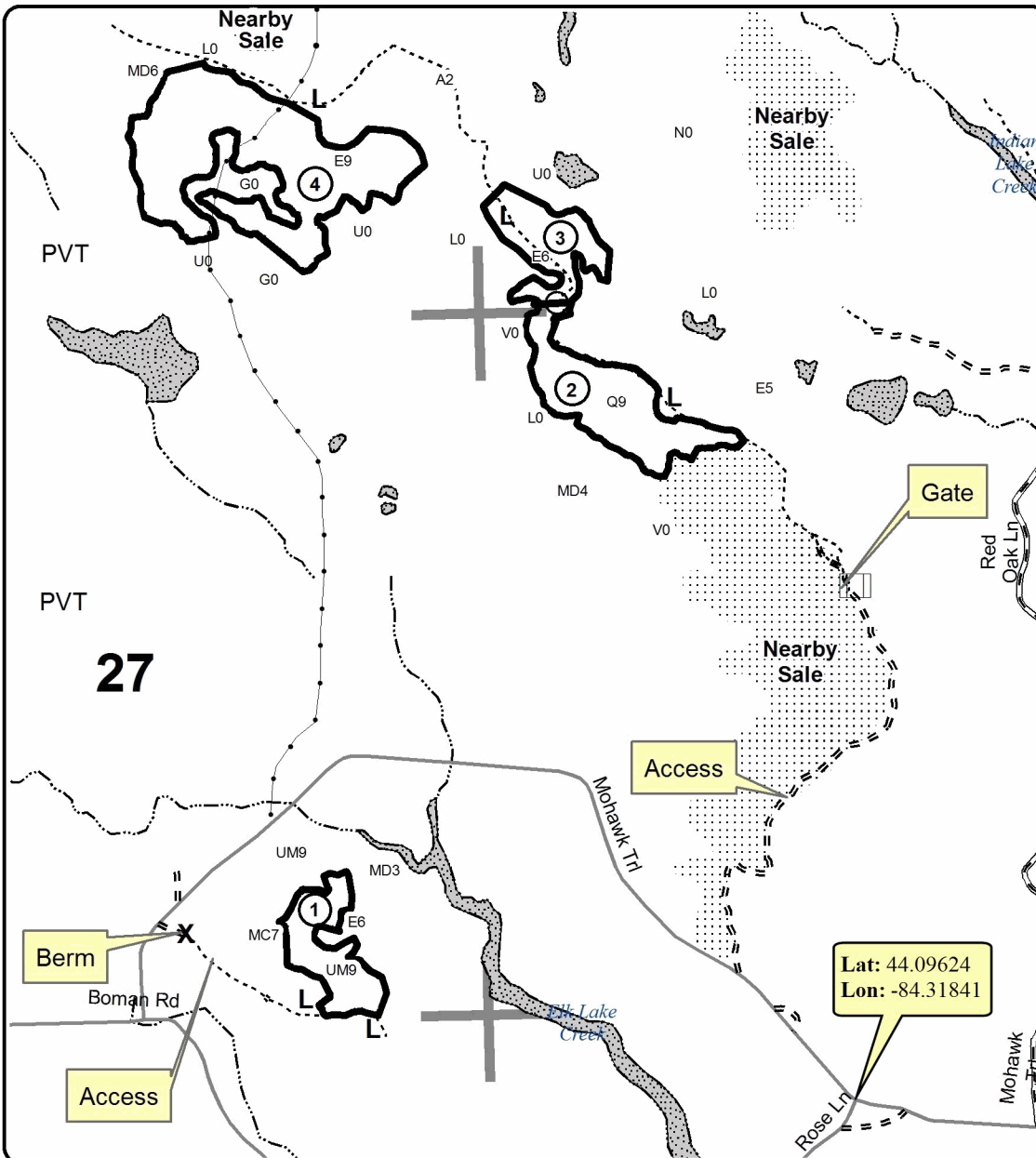
Cover Type				Density	
A = Aspen	H = Hemlock	N = Marsh	U = Upland Brush	0 = Non Stocked	5 = Pole Timber Medium
B = Paper Birch	J = Jack Pine	O = Oak	UM = Upland Mixed	1 = Seedling Sapling Poor	6 = Pole Timber Well
C = Cedar	L = Lowland Brush	P = Lowland Poplar	V = Bog or Marsh	2 = Seedling Sapling Medium	7 = Saw Timber Poor
D = Tread Bog	LM = Lowland Mixed	Q = Mixed Swamp Conifer	W = White Pine	3 = Seedling Sapling Well	8 = Saw Timber Medium
E = Swamp Hdwoods	M = Mpl, Bch, Brch	R = Red Pine	X = Non Stocked	4 = Pole Timber Poor	9 = Saw Timber Well
F = Spruce Fir	MC = Mixed Conifer	S = Black Spruce	Z = Water		
G = Grass	MD = Mixed Deciduous	T = Tamarack			

PU	Acres	PU	Acres
1	9.4	3	9.9
2	15.8	4	37.1

Comp 31 Mix

Compartment 31

72.2 Acres

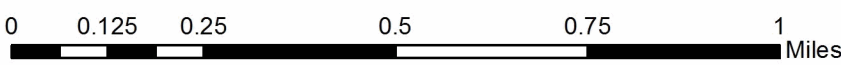
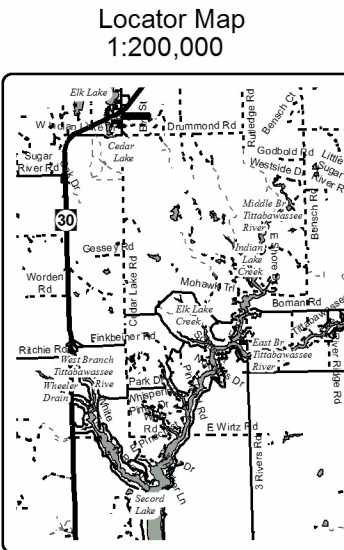


Legend

- Section Corners
- Paved Roads
- Gravel Roads
- Poor Dirt Roads
- Closed Roads
- Landing Locations
- Boy Scout Trail (Blue)

Sale Boundary

- Against State (Red)
- Payment Unit (Yellow)



Comp 31 Mix (73-003-16)
 ; Gladwin COUNTY

In response to the notice of sale to be held 11:00 a.m. (local time) on September 21, 2016, I am hereby submitting my sealed bid (firm offer) for the following forest products to be cut. Bids for individual species must be at or above the advertised price. All non-responsive bid forms may be rejected.

<u>PRODUCTS & SPECIES</u>	<u>ESTIMATED VOLUME*</u>	<u>ADVERTISED PRICE</u>	<u>BID PRICE</u>
Sawtimber			
Mixed Aspen	11.50 MBF	\$ 100.00/MBF	\$ _____
Mixed Oak	2.80 MBF	\$ 150.00/MBF	\$ _____
Red Maple	39.30 MBF	\$ 55.00/MBF	\$ _____
Red Pine	34.60 MBF	\$ 172.00/MBF	\$ _____
White Pine	1.50 MBF	\$ 94.00/MBF	\$ _____
Pulpwood			
Jack Pine	22.00 Cords	\$ 21.05/Cord	\$ _____
Mixed Aspen	151.00 Cords	\$ 22.00/Cord	\$ _____
Mixed Hardwood	32.00 Cords	\$ 15.35/Cord	\$ _____
Mixed Oak	26.00 Cords	\$ 15.75/Cord	\$ _____
Red Maple	228.00 Cords	\$ 15.35/Cord	\$ _____
Red Pine	111.00 Cords	\$ 52.85/Cord	\$ _____
White Pine	6.00 Cords	\$ 20.05/Cord	\$ _____

*The volumes are statistically estimated within plus (+) or minus (-) 21.11 percent. These estimated volumes are final and not subject to adjustment. Prospective bidders are urged to examine this timber and to make their own estimates of quantity and quality.

I understand that any or all bids may be rejected. All bids must be signed and all bid items must be bid or the bid form may be rejected. I also understand that consideration and awarding a contract will be based upon my past performance and ability to complete the contract based upon equipment and staffing subject to my control.

FEDERAL ID: ____ - ____ - ____ or SOCIAL SECURITY NUMBER: ____ - ____ - ____
 Company or individual bidding: _____
 Company representative's name: _____
 Address: _____
 City: _____ State: _____ Zip: _____

IF AVAILABLE, PLEASE PLACE THE PERSONALIZED LABEL FROM YOUR PROSPECTUS IN THE ABOVE BOX.

Individual or company representative's signature: _____ Date: _____

Phone number : _____ Email (optional): _____

THE WINNING BIDDER MUST COMPLETE THE VERIFICATION OF WORKER'S DISABILITY COMPENSATION ACT COMPLIANCE (ON REVERSE SIDE IF DOUBLE SIDED) WITHIN 21 DAYS OF SALE AWARD DATE



FOR DEPARTMENT USE ONLY
Sale Number (XX - XXX - XX - XX)
Forest Management Unit:

TIMBER SALE VERIFICATION OF WORKER'S DISABILITY COMPENSATION ACT COMPLIANCE

*As required by Act 317, P.A. 1969 (Worker's Compensation) and
Part 5 of Act 451 of 1994, as amended.*

VERIFICATION OF WORKER'S DISABILITY COMPENSATION ACT COMPLIANCE

- This verification must be completed and submitted within 21 days of contract award and prior to the issuance of the timber sale contract.
- In addition, if boxes 2B or 2C are checked, then Notice of Exclusion or Certificate of Insurance must be submitted within twenty-one (21) days of the contract award and prior to the issuance of the timber sale contract.
- All information must be typed or printed except for written signatures.

Please Check Appropriate Categories:

1. My business is organized as (you **must** check one of the boxes below):
 - A. Sole Proprietorship (individual)
 - B. Partnership
 - C. Corporation
2. You **must** check one of the boxes below:
 - A. I certify my business is a sole proprietorship and it has no employees but the sole proprietor. I am not subject to the Worker's Compensation Laws.
 - B. I certify my business has satisfied its obligation to the Worker's Compensation Act through the use of an approved Notice of Exclusion (BWC-337, Rev. 5/96). I will provide a copy of the Notice of Exclusion within 21 days of the contract award. (For questions or a copy of the BWC-337, please call the Worker's Compensation Bureau at 517-322-1195).
 - C. I certify my business has a Worker's Compensation Policy. I will provide an original Certificate of Insurance within twenty-one (21) days of the contract award.
3. If you have checked item 2(A) or 2(B), you **must** indicate the number of **both** full-time and part-time employees, other than yourself, including family members and active partners (if none, you must enter "0").

_____ Full-time Employees

_____ Part-time Employees

Name of Business		Federal ID (or) Social Security No.	
Address		Telephone ()	
City	State	ZIP	

I hereby certify that the above information is true and correct. I agree to notify the Michigan DNR of any changes that occur in factors affecting my coverage during any of my present and future operations.

Signature of Owner or Authorized Representative

Title

Date

Please complete the "SEALED BID" information on the next page