



**DEPARTMENT OF NATURAL RESOURCES
STATE OF MICHIGAN**

TIMBER SALE PROSPECTUS #5534

REVISION NOTICE #1 - April 12, 2016

SCHEDULED SALE DATE AND TIME: 3:00 p.m. (local time) on Friday, April 22, 2016

LOCATION: MANTON FIELD OFFICE, 521 N MICHIGAN, MANTON, MI 49663

This prospectus has been modified with the following changes.

The sale map for the BEARBAIT MIX timber sale (63-036-15) has been updated. Please use the attached sale map when bidding on this sale and disregard the original sale map sent with the prospectus.

The sale map for the NELSON ROAD MIX timber sale (63-037-15) has been updated. Please use the attached sale map when bidding on this sale and disregard the original sale map sent with the prospectus.

BEARBAIT MIX timber sale (63-036-15) conditions and requirements have been modified.

We apologize for any inconvenience this may have caused. If you need assistance, please contact Jim Malloy at 231-824-3591 ext. 10.



TIMBER SALE MAP

This information provided by authority of Part 525, 1994 PA 451, as amended.

Sale Number	Year
63-036	15

Forest Management Unit Cadillac/ Manton Field Office		County Missaukee	Mapped By Blair Tweedale	Date 09/29/2015	Page 1	of 1
Township 23N	Range 06W	Section(s) and Subdivision(s) Sec. 10 SENW,SWNW,NESW,SESW,NWSE,SWSE; Sec. 15 SWNE		Scale 1:15,840		

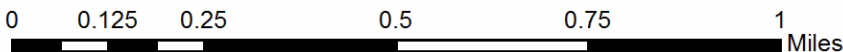
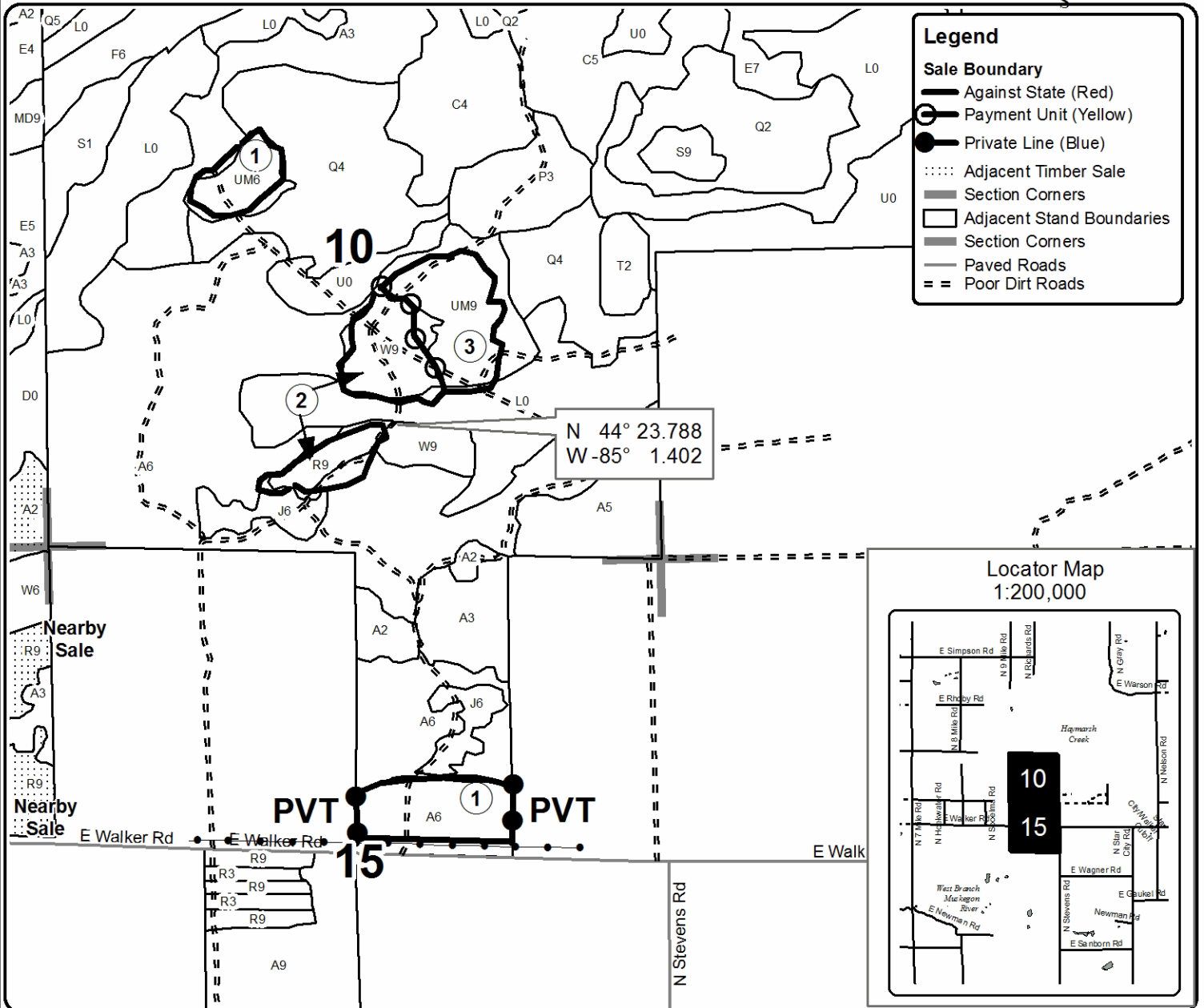
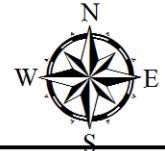
Cover Type				Density	
A = Aspen	H = Hemlock	N = Marsh	U = Upland Brush	0 = Non Stocked	5 = Pole Timber Medium
B = Paper Birch	J = Jack Pine	O = Oak	UM = Upland Mixed	1 = Seedling Sapling Poor	6 = Pole Timber Well
C = Cedar	L = Lowland Brush	P = Lowland Poplar	V = Bog or Marsh	2 = Seedling Sapling Medium	7 = Saw Timber Poor
D = Treed Bog	LM = Lowland Mixed	Q = Mixed Swamp Conifer	W = White Pine	3 = Seedling Sapling Well	8 = Saw Timber Medium
E = Swamp Hdwoods	M = Mpl, Bch, Brch	R = Red Pine	X = Non Stocked	4 = Pole Timber Poor	9 = Saw Timber Well
F = Spruce Fir	MC = Mixed Conifer	S = Black Spruce	Z = Water		
G = Grass	MD = Mixed Deciduous	T = Tamarack			

PU	Acres	PU	Acres
1	24	3	18
2	20		

Bear Bait Mix

Compartment 089

62 Acres



This prospectus has been modified with the following changes.

The sale map for the BEARBAIT MIX timber sale (63-036-15) has been updated. Please use the attached sale map when bidding on this sale and disregard the original sale map sent with the prospectus.

The sale map for the NELSON ROAD MIX timber sale (63-037-15) has been updated. Please use the attached sale map when bidding on this sale and disregard the original sale map sent with the prospectus.

BEARBAIT MIX timber sale (63-036-15) conditions and requirements have been modified.

We apologize for any inconvenience this may have caused. If you need assistance, please contact Jim Malloy at 231-824-3591 ext. 10.



TIMBER SALE MAP

This information provided by authority of Part 525, 1994 PA 451, as amended.

Sale Number	Year
63-037	15

Forest Management Unit	County	Mapped By	Date	Page	of
Cadillac/ Manton Field Office	Missaukee	Blair Tweedale	09/29/2015	1	1
		Cruised By			
		Cross/Ventimiglia			

Township	Range	Section(s) and Subdivision(s)	Scale
23N	06W	Sec. 1 NENW, NWNE, NENE, SENE	1:15,840

Cover Type				Density	
A = Aspen	H = Hemlock	N = Marsh	U = Upland Brush	0 = Non Stocked	5 = Pole Timber Medium
B = Paper Birch	J = Jack Pine	O = Oak	UM = Upland Mixed	1 = Seedling Sapling Poor	6 = Pole Timber Well
C = Cedar	L = Lowland Brush	P = Lowland Poplar	V = Bog or Marsh	2 = Seedling Sapling Medium	7 = Saw Timber Poor
D = Treed Bog	LM = Lowland Mixed	Q = Mixed Swamp Conifer	W = White Pine	3 = Seedling Sapling Well	8 = Saw Timber Medium
E = Swamp Hdwoods	M = Mpl, Bch, Brch	R = Red Pine	X = Non Stocked	4 = Pole Timber Poor	9 = Saw Timber Well
F = Spruce Fir	MC = Mixed Conifer	S = Black Spruce	Z = Water		
G = Grass	MD = Mixed Deciduous	T = Tamarack			

PU Acres

1	22
2	38

Nelson Road Mix

Compartment 089

60 Acres

