



**DEPARTMENT OF NATURAL RESOURCES
STATE OF MICHIGAN**

TIMBER SALE PROSPECTUS #5650

SCHEDULED SALE DATE AND TIME: 3:00 p.m. (local time) on July 25, 2016.

LOCATION: MANTON FIELD OFFICE, 521 N MICHIGAN, MANTON, MI 49663.

PROSPECTUS NOTE: The bidder is advised to inspect the sale area and review the location, estimated volumes, operating costs and contract terms of proposed sales. Please be aware that some landowners may request 60 days or more notice for access across their land.

Notice is hereby given that bids will be received by the Unit Manager, CADILLAC MANAGEMENT UNIT, for certain timber on the following described lands:

Buckley Strip Red (63-010-16)

Wexford County, Advertised Price \$235,818.85, 71.8 Acres, Red Pine.

Stoney Removal (63-011-16)

Missaukee County, Advertised Price \$19,301.30, 51.5 Acres, Jack Pine, White Pine.

Four Corners Red (63-012-16)

Wexford County, Advertised Price \$28,208.60, 40.3 Acres, Red Pine.

SALE NOTE: Access may be through private or other public land.

Chippewa Aspen (63-013-16)

Wexford County, Advertised Price \$50,966.35, 120.3 Acres, Aspen, Hardwood.

SALE NOTE: Unit 2 will require a frozen condition for harvest.

BID INSTRUCTIONS (VER. 05/04/2016):

1. Scheduled Bid Location, Date, and Time (2/11)

Bids must be received by the Unit Manager, MANTON OFFICE, 521 N MICHIGAN, MANTON, MI 49663, no later than 3:00 p.m. (local time) on July 25, 2016. For further information concerning this sale, contact Jim Malloy at 231-824-3591 extension 10.

2. Bidder's Qualifications (5/16)

Purchaser shall obtain workers compensation insurance to cover claims under Michigan's Worker's Disability Compensation Act of 1969 or similar employee benefit act of any other state applicable to an employee. If all or part of a timber sale was prepared by a private contractor, the contractor and that contractor's company are not permitted to bid on the timber sale contract. Bids will not be accepted from individuals or companies appearing on the DNR/FRD No-Bid List. This list contains the names of purchasers who previously failed to execute a contract within 21-days or who have a history of poor performance.

3. Preparation of Sealed Bids (5/16)

Bid Forms may be completed online thru Michigan DNR Timber Sale Online Bidding (OLB) at www.michigan.gov/timberbidding or by completing the hardcopy Bid Form found in the Timber Sale Prospectus. Hardcopy Bid Forms shall be manually signed in ink. Registration in OLB is considered your 'signature' for all bids submitted thru that system. Bid prices must be entered for each species and product in the Bid Price column for all material subject to bidding and all fill-in blanks must be completed. If erasures or other changes appear on the hardcopy Bid Form, each erasure or change must be initialed by the person signing the bid.

4. Submission of Sealed Bids (5/16)

Bid forms may be obtained from the Unit Manager or thru OLB. Bids may be submitted hardcopy or thru OLB. All hardcopy bids must be submitted on the bid form and in an envelope clearly identified as described in this section. NOTE: Only one bid form per bid envelope. Sealed bids must be submitted to the Unit office designated in the prospectus and must be submitted at or prior to the time established in the prospectus. The envelope should show on the outside (a) the sale name or number and (b) the date and time of bid opening, as shown in the prospectus. Bids received after the time specified in the sale prospectus are late bids and will be rejected.

It is possible for a bidder to submit multiple bids on a single sale. For example, a bid may be submitted hardcopy and a bid may be submitted thru OLB. Or, two bidders from the same company could both submit bids on the same sale. If this were to happen, the State would accept all bids received and award the contract accordingly. All bidding and contractual requirements would apply to all bids received.

5. Public Opening of Sealed Bids (5/16)

If conditions permit, the sealed bids will be publicly opened and posted at the time and place set in the prospectus.

If a bidder, present at a bid opening, has submitted bids on more than one sale, that bidder may withdraw their unopened bid envelopes or announce the withdraw of their online bid after being declared the successful bidder on one sale.

6. Award of Contract (1/11)

Award of the contract will be made to the Bidder whose bid, conforming to the prospectus, is most advantageous to the State of Michigan on the basis of total value at rates bid for the estimated quantities. The State reserves the right to reject any bid or waive any minor irregularity in bids received. A written award mailed (or otherwise furnished) to the successful Bidder shall be deemed to result in a binding contract without further action by either party.

7. Down Payment (1/11)

The Bidder to whom award is made must make a down payment within 21 days of the sale award. The amount of the down payment will be calculated as shown in the Bond and Payment Schedule of this prospectus. Only cash may be used to meet this requirement.

8. Performance Security (1/11)

As guarantee of faithful performance, a cash bond, certificate of deposit, surety bond or irrevocable letter of credit (LOC) is required within 21 days of the sale award. The amount of the performance security is shown in the Bond and

Payment Schedule of this prospectus. If an LOC or surety is used, the coverage must extend for at least 6 months beyond the contract expiration.

9. Timber Sale Contract (9/14)

Additional conditions and requirements common to all timber sales are listed on the timber sale contract (R4031) and are available on line at www.michigan.gov/timber. Contact the Unit Manager for additional information or a sample contract. Within 21 days of the date of the award letter, the bidder must sign the contract and provide the required down payment, performance security, and verification of worker's disability compensation. The down payment and performance security shall be in accordance with the provisions of the timber sale contract, in the sums stated in this prospectus. If these actions are not taken, then the Bidder, the Bidder's corporation, and the corporation's principals may not be permitted to bid on State timber sales for a period of 1 year. In addition, the Bidder certifies that if awarded this contract, the Bidder will complete the timber sale contract in accordance with its terms and any modifications thereof including requirements to purchase, cut, and remove the included timber by the expiration date.

10. Disclaimer of Estimates and Bidder's Warranty of Inspection (1/11)

Before submitting this bid, the Bidder is advised and cautioned to inspect the sale area, review the requirements of the sale contract, and take other steps as may be reasonably necessary to ascertain the location, estimated volumes, construction estimates, and operating costs of the proposed sale. Failure to do so will not relieve the Bidder from responsibility for completing the contract.

The Bidder warrants that this bid is submitted solely on the basis of the Bidder's examination and inspection of the quality and quantity of the timber offered for sale and the Bidder's opinion of the value thereof and the costs of recovery. No reliance should be placed on the State of Michigan's estimates of timber quality, quantity or costs of recovery. Bidder further acknowledges that the State of Michigan: (i) expressly disclaims any warranty of fitness of timber for any purpose; (ii) offers this timber as is without any warranty of quality (merchantability) or quantity and (iii) expressly disclaims any warranty as to the quantity or quality of timber sold.

11. Certification and Chain-of-Custody (10/14)

Unless otherwise indicated in the contract under section 7 – Other Conditions of the Sale Specific Conditions & Requirements, the area encompassed by this timber sale is certified to the standards of the Forest Stewardship Council (FSC) - Certificate #SCS-FM/COC-00090N and the Sustainable Forestry Initiative (SFI) - Certificate #NSF-SFIS-5Y031-SF5. Forest products from this sale may be delivered to the mill as "FSC 100% and / or SFI certified" as long as the contractor hauling the forest products is chain-of-custody (COC) certified or covered under a COC certificate from the destination mill. The purchaser is responsible for maintaining COC after leaving the sale area.

DR. WILLIAM MORITZ
Director

TIMBER SALE INFORMATION

Buckley Strip Red (63-010-16)

Wexford County (Advertised Price \$235,818.85)

A timber sale contract for this lump sum, sealed bid timber sale will be awarded to the responsible bidder offering the highest sealed bid price. Bids must be at or above the following advertised price for each species:

<u>PRODUCTS & SPECIES</u>	<u>ESTIMATED UNITS*</u>	<u>ADVERTISED PRICE</u>
Sawtimber		
Red Pine	1,619.80 MBF	\$ 127.00 / MBF
Pulpwood		
Red Pine	615.00 Cords	\$ 48.95 / Cord

* The total volume is statistically estimated within plus (+) or minus (-) 6.23 percent. The estimated units are final and not subject to adjustment. Prospective bidders are urged to examine this timber and to make their own estimates of quantity and quality.

BOND AND PAYMENT SCHEDULE:

1. A bond in the amount of \$11,791.00 to insure faithful performance of the conditions of the contract will be deposited by the successful bidder within 21 days of the sale award.
2. Cutting in any sale or unit without the required advance payment would be considered a trespass.
3. Total payment must be paid in advance or according to the following schedule:
 - (a) Ten percent (10%) of the sale value must be paid within 21 days of the sale award.
 - (b) The 10% down payment will be credited towards the first unit cut.
4. If no cutting takes place, the 10% down payment will not be refunded.
5. Operations on the contract issued will terminate on 09/30/2018.

Description of Timber by Payment Unit (PU)

PU	MARKET GROUP	PRODUCT	QUANTITY	UNIT	ACRES	ADVERTISE PRICE
1	Red Pine	Sawtimber	857.3	MBF	38.0	\$124,785.85
	Red Pine	Pulpwood	325.0	Cords		
2	Red Pine	Sawtimber	762.5	MBF	33.8	\$111,033.00
	Red Pine	Pulpwood	290.0	Cords		
TOTAL:			1,619.8	MBF		
TOTAL:			615.0	Cords		

Sale Specific Conditions & Requirements

Sale Name: Buckley Strip Red

Sale Number: 63-010-16 Seq#: 1

1 - Sale Area

1.2 - Boundaries

1.2.1 - Painted boundaries (1/14)

The sale boundary is marked with red along the perimeter of the sale. The timber type change will be used along the young red pine strips in the interior of the sale. The payment unit line is the north/south two track that runs through the sale.

2 - Timber Specifications

2.1 - Included Timber

2.1.1 - Clearcut unit(s) with unmerchantable trees (6/14)

Within Payment Unit(s) 1 and 2, cut all trees that are one (1) inches or more at DBH.

2.2 - Utilization

2.2.2 - Chipping required (5/14)

The sale must be chip harvested to facilitate subsequent planting operations. The Purchaser has the option to produce sawlogs or pulpwood bolts, but the remaining portion of the trees must be chipped.

2.2.3 - Stump heights (4/07)

Stump heights within the Sale Area shall not exceed 6 inches for all trees. This is in order to facilitate planting operations.

3 - Payments

3.3 - Pre-measured Sales

3.3.4 - Dividing payment units (7/14)

Payment Unit(s) may be divided at the request of the Purchaser and upon approval of the Unit Manager. Dividing Payment Units is a contract modification which requires a Timber Sale Contract Supplement.

4 - Transportation

4.1 - Construction

4.1.12 - No new roads (1/12)

No new roads will be permitted. All operations are limited to existing roads. Skid trails only will be allowed.

4.2 - Maintenance

4.2.5 - Two wheel drive condition (2/04)

All existing trail roads on and adjacent to the sale area must be passable by two-wheel drive traffic for the duration of the sale.

5 - Operations

5.1 - Notification

5.1.1 - Pre-sale conference (10/11)

A pre-sale conference on site between the Purchaser and sale administrator is required prior to beginning any operations a Payment Unit to determine landing and road locations. The Unit Manager or his/her representative must be contacted at least 3 days in advance to schedule the conference.

5.1.4 - Post-sale conference (6/11)

A post-sale conference on site between the Purchaser and sale administrator is required 3 days prior to the completion of active logging operations to determine clean-up and repair of landings, road edges, and the fulfillment of other contract specifications.

6 - Safety and Fire Prevention

6.2 - Signing

6.2.1 - Road posting (9/09)

The Purchaser is responsible for posting and maintaining caution signs on W 4 Rd. prior to beginning operations. The road must be posted at appropriate distances from the sale area to warn of logging activity and truck traffic. Signs must be removed when harvest operations are suspended or completed. The Purchaser will provide these signs.



TIMBER SALE MAP

This information provided by authority of Part 525, 1994 PA 451, as amended.

Sale Number	Year
63-010-16-01	2016

Forest Management Unit Cadillac	County Wexford	Mapped By Ventimiglia	Date 04/21/2016	Page 1	of 1
Township 24N	Range 11W	Section(s) and Subdivision(s) Section 4 SE	Scale 1:15,840		

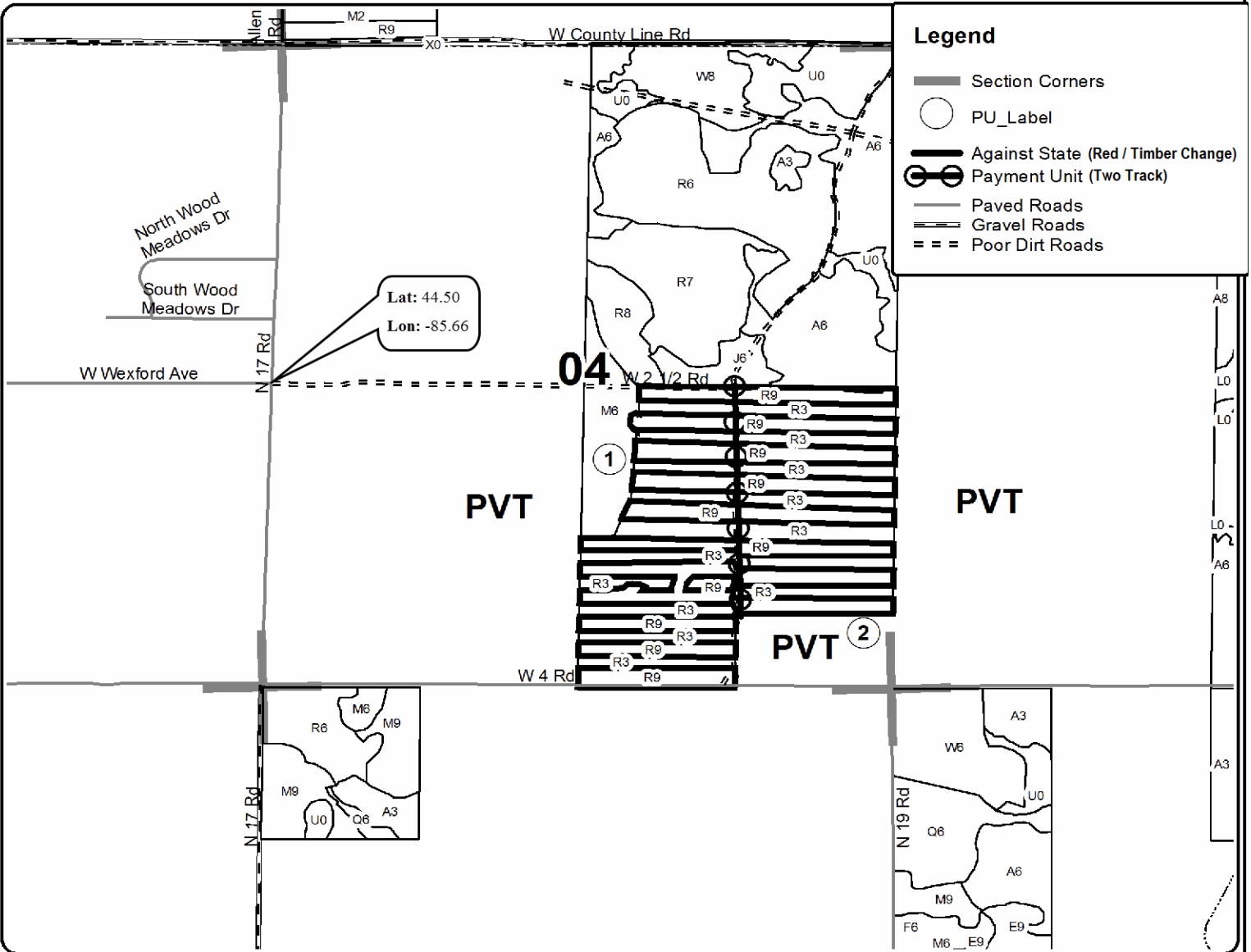
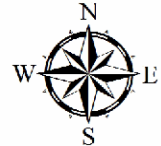
Cover Type				Density			
A = Aspen	H = Hemlock	N = Marsh	U = Upland Brush	0 = Non Stocked	5 = Pole Timber Medium		
B = Paper Birch	J = Jack Pine	O = Oak	UM = Upland Mixed	1 = Seedling Sapling Poor	6 = Pole Timber Well		
C = Cedar	L = Lowland Brush	P = Lowland Poplar	V = Bog or Marsh	2 = Seedling Sapling Medium	7 = Saw Timber Poor		
D = Tread Bog	LM = Lowland Mixed	Q = Mixed Swamp Conifer	W = White Pine	3 = Seedling Sapling Well	8 = Saw Timber Medium		
E = Swamp Hdwoods	M = Mpl. Bch, Brch	R = Red Pine	X = Non Stocked	4 = Pole Timber Poor	9 = Saw Timber Well		
F = Spruce Fir	MC = Mixed Conifer	S = Black Spruce	Z = Water				
G = Grass	MD = Mixed Deciduous	T = Tamarack					

PU	Acres	PU	Acres
1	38		
2	33.8		

Buckley Strip Red

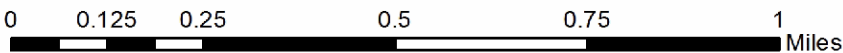
Compartment 128

71.8 Acres



Legend

- Section Corners
- PU_Label
- Against State (Red / Timber Change)
- Payment Unit (Two Track)
- Paved Roads
- Gravel Roads
- Poor Dirt Roads



TIMBER SALE INFORMATION

Stoney Removal (63-011-16)

Missaukee County (Advertised Price \$19,301.30)

A timber sale contract for this lump sum, sealed bid timber sale will be awarded to the responsible bidder offering the highest sealed bid price. Bids must be at or above the following advertised price for each species:

<u>PRODUCTS & SPECIES</u>	<u>ESTIMATED UNITS*</u>	<u>ADVERTISED PRICE</u>
Sawtimber		
B. T. Aspen	0.70 MBF	\$ 89.00 / MBF
Northern Pin Oak	35.20 MBF	\$ 198.00 / MBF
Red Maple	2.10 MBF	\$ 205.00 / MBF
White Pine	52.20 MBF	\$ 77.00 / MBF
Pulpwood		
B. T. Aspen	25.00 Cords	\$ 19.60 / Cord
Jack Pine	70.00 Cords	\$ 28.50 / Cord
Northern Pin Oak	129.00 Cords	\$ 20.10 / Cord
Red Maple	18.00 Cords	\$ 24.25 / Cord
White Pine	178.00 Cords	\$ 12.95 / Cord

* The total volume is statistically estimated within plus (+) or minus (-) 15.86 percent. The estimated units are final and not subject to adjustment. Prospective bidders are urged to examine this timber and to make their own estimates of quantity and quality.

BOND AND PAYMENT SCHEDULE:

1. A bond in the amount of \$965.00 to insure faithful performance of the conditions of the contract will be deposited by the successful bidder within 21 days of the sale award.
2. Cutting in any sale or unit without the required advance payment would be considered a trespass.
3. Total payment must be paid in advance or according to the following schedule:
 - (a) Ten percent (10%) of the sale value must be paid within 21 days of the sale award.
 - (b) The 10% down payment will be credited towards the first unit cut.
4. If no cutting takes place, the 10% down payment will not be refunded.
5. Operations on the contract issued will terminate on 09/30/2018.

Description of Timber by Payment Unit (PU)

PU	MARKET GROUP	PRODUCT	QUANTITY	UNIT	ACRES	ADVERTISE PRICE
1	B. T. Aspen	Sawtimber	0.7	MBF	11.3	\$7,880.90
	Northern Pin Oak		16.3	MBF		
	White Pine		6.8	MBF		
	B. T. Aspen	Pulpwood	25.0	Cords		
	Jack Pine		57.0	Cords		
	<i>Jack Pine</i>	<i>Sawtimber</i>	0.5	<i>MBF</i>		
	<i>Jack Pine</i>	<i>Pulpwood</i>	56.0	<i>Cords</i>		
	Northern Pin Oak		71.0	Cords		
	Red Maple		3.0	Cords		
	White Pine		35.0	Cords		
	2	Northern Pin Oak	Sawtimber	18.9		
Red Maple			2.1	MBF		
White Pine			29.8	MBF		
Jack Pine		Pulpwood	13.0	Cords		
<i>Jack Pine</i>			13.0	<i>Cords</i>		
Northern Pin Oak			58.0	Cords		
Red Maple			15.0	Cords		
White Pine			109.0	Cords		
3	White Pine	Sawtimber	15.6	MBF	5.4	\$1,641.50
	White Pine	Pulpwood	34.0	Cords		
TOTAL:			90.7	MBF		
TOTAL:			489.0	Cords		

Sale Specific Conditions & Requirements

Sale Name: Stoney Removal

Sale Number: 63-011-16 Seq#: 1

1 - Sale Area

1.2 - Boundaries

1.2.1 - Painted boundaries (1/14)

The sale boundaries are marked and identified by blue and red paint. Exterior boundary lines against private property are marked with blue paint. Exterior sale boundary lines against state are marked with red paint.

2 - Timber Specifications

2.1 - Included Timber

2.1.5 - Overstory removal unit(s) (8/11)

Within Payment Unit(s) 1, 2 and 3, all trees with DBH equal to or greater than 10 inches which meet minimum piece specifications in 2.2 Utilization, are designated for cutting, except do not cut any aspen or any trees marked with green paint.

2.2 - Utilization

2.2.6 - Roundwood operation required (5/07)

The skidding of whole trees or tree segments with limbs attached is prohibited within sale area. All products must be produced as roundwood and forwarded to existing roads or landing areas in final product length.

3 - Payments

3.4 - Damaged Timber

3.4.1 - Damaged timber (6/14)

General Condition and Requirement 3.4 Damaged Timber, defines liquidated damages for undesignated live merchantable trees which are cut or injured. In addition, extreme care should be taken to avoid damage to tree seedlings and saplings.

Within the sale area, if more than 25% of the tree seedlings or saplings (1/4" to 4.5" DBH) within a specified portion of the sale area are damaged, liquidated damages will be assessed at \$300 per acre for all acreage within that specified portion of the sale area that was damaged.

No damage is acceptable to merchantable trees. Within the sale area, if more than 5% of trees (> 4.5" DBH) within a specified area of the sale are damaged, liquidated damages will be assessed for all trees damaged. Rates will be in accordance with General Condition and Requirement 3.4 Damaged Timber.

4 - Transportation

4.1 - Construction

4.1.12 - No new roads (1/12)

No new roads will be permitted in any Payment Unit. All operations are limited to existing roads. Skid trails only will be allowed.

4.2 - Maintenance

4.2.5 - Two wheel drive condition (2/04)

All existing trail roads on and adjacent to the sale area must be passable by two-wheel drive traffic for the duration of the sale.

5 - Operations

5.1 - Notification

5.1.1 - Pre-sale conference (10/11)

A pre-sale conference between the Purchaser and sale administrator is required prior to beginning any operations to

determine landing and road locations. The Unit Manager or his/her representative must be contacted at least 5 days in advance to schedule the conference.

5.1.4 - Post-sale conference (6/11)

A post-sale conference on site between the Purchaser and sale administrator is required 5 days prior to the completion of active logging operations to determine clean-up and repair of landings, road edges, and the fulfillment of other contract specifications.

5.2 - Conduct of Operations

5.2.1 - Slash

5.2.1.8 - Slash height (12/08)

No slash or tree tops may exceed 24 inches in height.

5.2.3 - Operating Restrictions

5.2.3.4 - Oak wilt restriction (6/10)

Within Payment Unit(s) 1-3 unless changed by written agreement, cutting and skidding are not permitted during the period of April 15 to July 15. This is necessary to reduce the spread of oak wilt. For more information, contact the Unit Manager or his/her representative.

5.2.4 - Dead and Down Creation

5.2.4.4 - Dead and down creation, grouse (8/13)

To encourage grouse and other wildlife, in Payment Unit(s) 2 leave one, 12" diameter or larger log-length (8 foot minimum) piece on the ground for every 2 acres. This can be an unmerchantable piece or a full tree.

5.2.29 - Shrub protection (9/07)

Do not cut or damage hawthorn, witch-hazel, dogwood or junberry. These woody-shrub plants are highly beneficial to various wildlife species.

5.2.38 - No decking against live trees (2/04)

Cut products may not be decked against unmarked or designated leave trees.

5.4 - Soil Protection

5.4.1 - Rutting restriction, general (1/09)

Operations are to cease immediately if equipment and weather conditions result in rutting of roads and skid trails which is 12 inches or greater in depth and 50 feet in length. The Unit Manager or his/her representative may restrict hauling and/or skidding if ruts exceed the specified depth. With the Unit Manager or his/her representative's approval, the Purchaser may return to the area when the risk of rutting has decreased.

6 - Safety and Fire Prevention

6.2 - Signing

6.2.1 - Road posting (9/09)

The Purchaser is responsible for posting and maintaining caution signs on Stoney Corners Road prior to beginning operations. The road must be posted at appropriate distances from the sale area to warn of logging activity and truck traffic. Signs must be removed when harvest operations are suspended or completed. The Purchaser will provide these signs.



TIMBER SALE MAP

This information provided by authority of Part 525, 1994 PA 451, as amended.

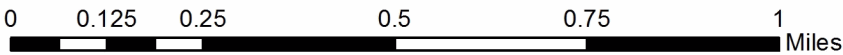
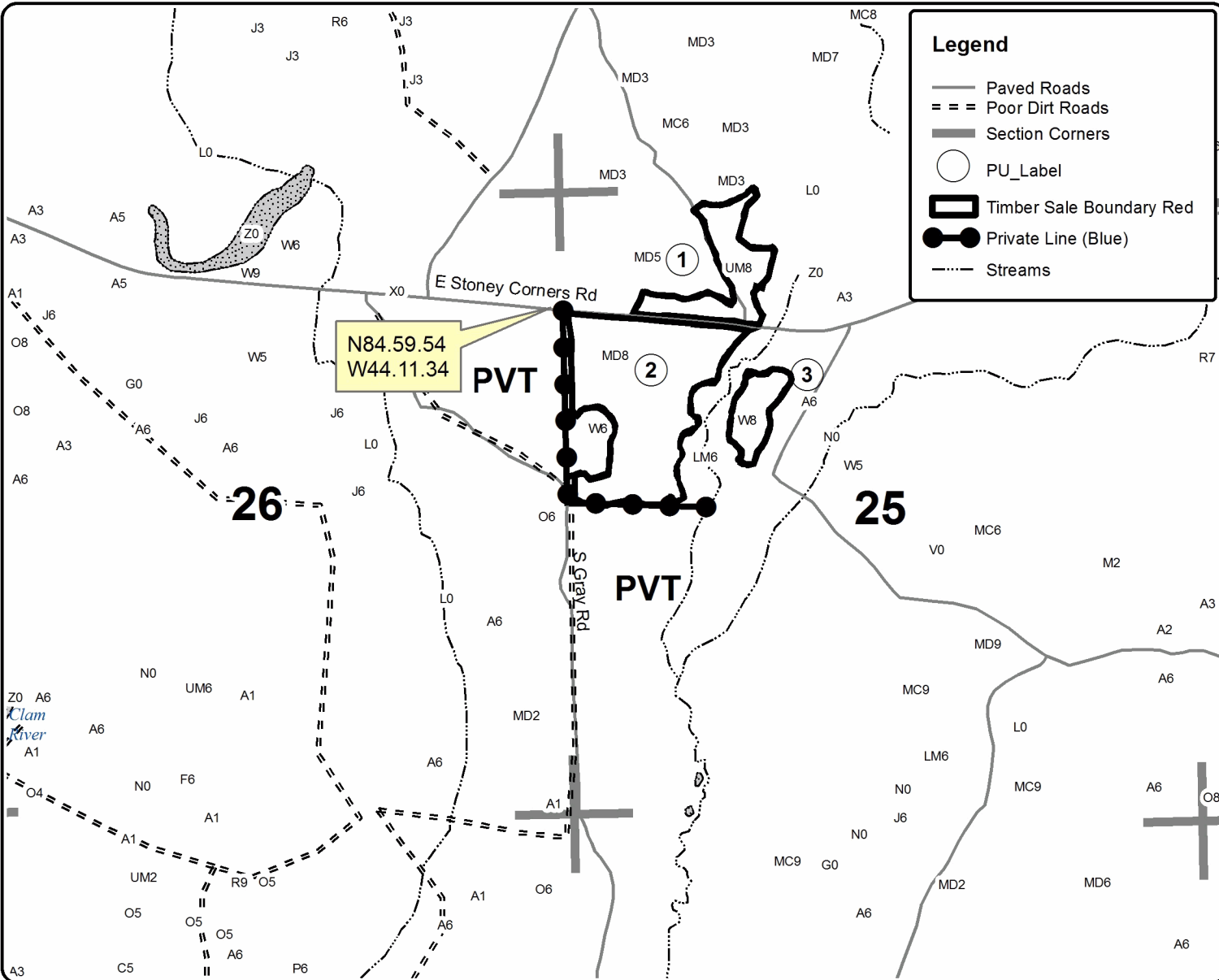
Forest Management Unit Cadillac Unit		County Missaukee County	Mapped By Eisele	Date 05/06/2016	Page 1	of 1
Township 21N	Range R6W	Section(s) and Subdivision(s) 25 NW 1/4		Scale 1:15,840		
Cover Type				Density		
A = Aspen	H = Hemlock	N = Marsh	U = Upland Brush	0 = Non Stocked	5 = Pole Timber Medium	
B = Paper Birch	J = Jack Pine	O = Oak	UM = Upland Mixed	1 = Seedling Sapling Poor	6 = Pole Timber Well	
C = Cedar	L = Lowland Brush	P = Lowland Poplar	V = Bog or Marsh	2 = Seedling Sapling Medium	7 = Saw Timber Poor	
D = Treed Bog	LM = Lowland Mixed	Q = Mixed Swamp Conifer	W = White Pine	3 = Seedling Sapling Well	8 = Saw Timber Medium	
E = Swamp Hdwoods	M = Mpl, Bch, Brch	R = Red Pine	X = Non Stocked	4 = Pole Timber Poor	9 = Saw Timber Well	
F = Spruce Fir	MC = Mixed Conifer	S = Black Spruce	Z = Water			
G = Grass	MD = Mixed Deciduous	T = Tamarack				

PU	Acres	PU	Acres
1	11.3 acres		
2	34.8 acres		
3	5.4 acres		

Stoney Removal

Compartment 106

51.5 Acres



TIMBER SALE INFORMATION

Four Corners Red (63-012-16)

Wexford County (Advertised Price \$28,208.60)

SALE NOTE: Access may be through private or other public land.

A timber sale contract for this lump sum, sealed bid timber sale will be awarded to the responsible bidder offering the highest sealed bid price. Bids must be at or above the following advertised price for each species:

<u>PRODUCTS & SPECIES</u>	<u>ESTIMATED UNITS*</u>	<u>ADVERTISED PRICE</u>
Sawtimber		
Red Pine	66.50 MBF	\$ 118.00 / MBF
Pulpwood		
Red Pine	448.00 Cords	\$ 45.45 / Cord

* The total volume is statistically estimated within plus (+) or minus (-) 11.02 percent. The estimated units are final and not subject to adjustment. Prospective bidders are urged to examine this timber and to make their own estimates of quantity and quality.

BOND AND PAYMENT SCHEDULE:

1. A bond in the amount of \$1,410.00 to insure faithful performance of the conditions of the contract will be deposited by the successful bidder within 21 days of the sale award.
2. Cutting in any sale or unit without the required advance payment would be considered a trespass.
3. Total payment must be paid in advance or according to the following schedule:
 - (a) Ten percent (10%) of the sale value must be paid within 21 days of the sale award.
 - (b) The 10% down payment will be credited towards the first unit cut.
4. If no cutting takes place, the 10% down payment will not be refunded.
5. Operations on the contract issued will terminate on 09/30/2018.

Description of Timber by Payment Unit (PU)

PU	MARKET GROUP	PRODUCT	QUANTITY	UNIT	ACRES	ADVERTISE PRICE
1	Red Pine	Sawtimber	2.5	MBF	4.9	\$3,840.10
	Red Pine	Pulpwood	78.0	Cords		
2	Red Pine	Sawtimber	19.8	MBF	16.1	\$12,062.70
	Red Pine	Pulpwood	214.0	Cords		
3	Red Pine	Sawtimber	21.6	MBF	8.6	\$5,775.75
	Red Pine	Pulpwood	71.0	Cords		
4	Red Pine	Sawtimber	22.6	MBF	10.7	\$6,530.05
	Red Pine	Pulpwood	85.0	Cords		
TOTAL:			66.5	MBF		
TOTAL:			448.0	Cords		

Sale Specific Conditions & Requirements

Sale Name: Four Corners Red

Sale Number: 63-012-16 Seq#: 1

1 - Sale Area

1.2 - Boundaries

1.2.1 - Painted boundaries (1/14)

The sale boundary is marked with red paint. The painted boundary line trees are not Included Timber and are to be protected unless marked with orange paint.

2 - Timber Specifications

2.1 - Included Timber

2.1.3 - Cut tree marked unit(s) (12/08)

Within Payment Unit(s) 1-3, all trees are designated for cutting when marked with orange paint above and below stump height, regardless of merchantability.

2.1.8 - Designated plantation row unit(s) (12/08)

Within Payment Unit(s) 4, all trees which meet minimum piece specifications in 2.2 Utilization, within designated plantation rows are designated for cutting. Designated plantation rows are every third row. Begin with the third row in from the outside of the plantation, and continue every third row. Because of the variability of row direction, it shall be the responsibility of the producer to maintain the third row sequence.

2.2 - Utilization

2.2.3 - Stump heights (4/07)

Stump heights within the Sale Area shall not exceed 6 inches for all trees.

2.2.6 - Roundwood operation required (5/07)

The skidding of whole trees or tree segments with limbs attached is prohibited. All products must be produced as roundwood and forwarded to existing roads or landing areas in final product length.

4 - Transportation

4.1 - Construction

4.1.12 - No new roads (1/12)

No new roads will be permitted in any Payment Unit. All operations are limited to existing roads. Skid trails only will be allowed.

4.2 - Maintenance

4.2.5 - Two wheel drive condition (2/04)

All existing trail roads on and adjacent to the sale area must be passable by two-wheel drive traffic for the duration of the sale.

4.4 - Access

4.4.1 - Private property access (3/11)

Permission for access across private land is the responsibility of the Purchaser. Should the Purchaser desire to cross private land, a copy of the written permission from the private land-owner may be required by the DNR. This applies to Payment Unit 1 only; logging activities occurred on this access before.

5 - Operations

5.1 - Notification

5.1.1 - Pre-sale conference (10/11)

A pre-sale conference on site between the Purchaser and sale administrator is required prior to beginning any operations to determine landing and road locations. The Unit Manager or his/her representative must be contacted at least 3 days in

advance to schedule the conference.

5.1.4 - Post-sale conference (6/11)

A post-sale conference on site between the Purchaser and sale administrator is required 3 days prior to the completion of active logging operations to determine clean-up and repair of landings, road edges, and the fulfillment of other contract specifications.

5.2 - Conduct of Operations

5.2.3 - Operating Restrictions

5.2.3.3 - Bark slippage restriction (3/09)

Within Payment Unit(s) 1 - 4, unless changed by written agreement, cutting and skidding are not permitted during the period of April 15 to July 15. This restriction is because of bark slippage concerns.

6 - Safety and Fire Prevention

6.2 - Signing

6.2.1 - Road posting (9/09)

The Purchaser is responsible for posting and maintaining caution signs on access roads prior to beginning operations. The road must be posted at appropriate distances from the sale area to warn of logging activity and truck traffic. Signs must be removed when harvest operations are suspended or completed. The Purchaser will provide these signs.



TIMBER SALE MAP

This information provided by authority of Part 525, 1994 PA 451, as amended.

Sale Number	Year
63-012-16-01	16

Forest Management Unit	County	Mapped By	Date	Page	of
Cadillac	Wexford	Ventimiglia	05/04/16	1	2
Township	Range	Section(s) and Subdivision(s)	Scale		
24N	12W	Sec 6 SENW, Sec 8 NESW	1:15,840		

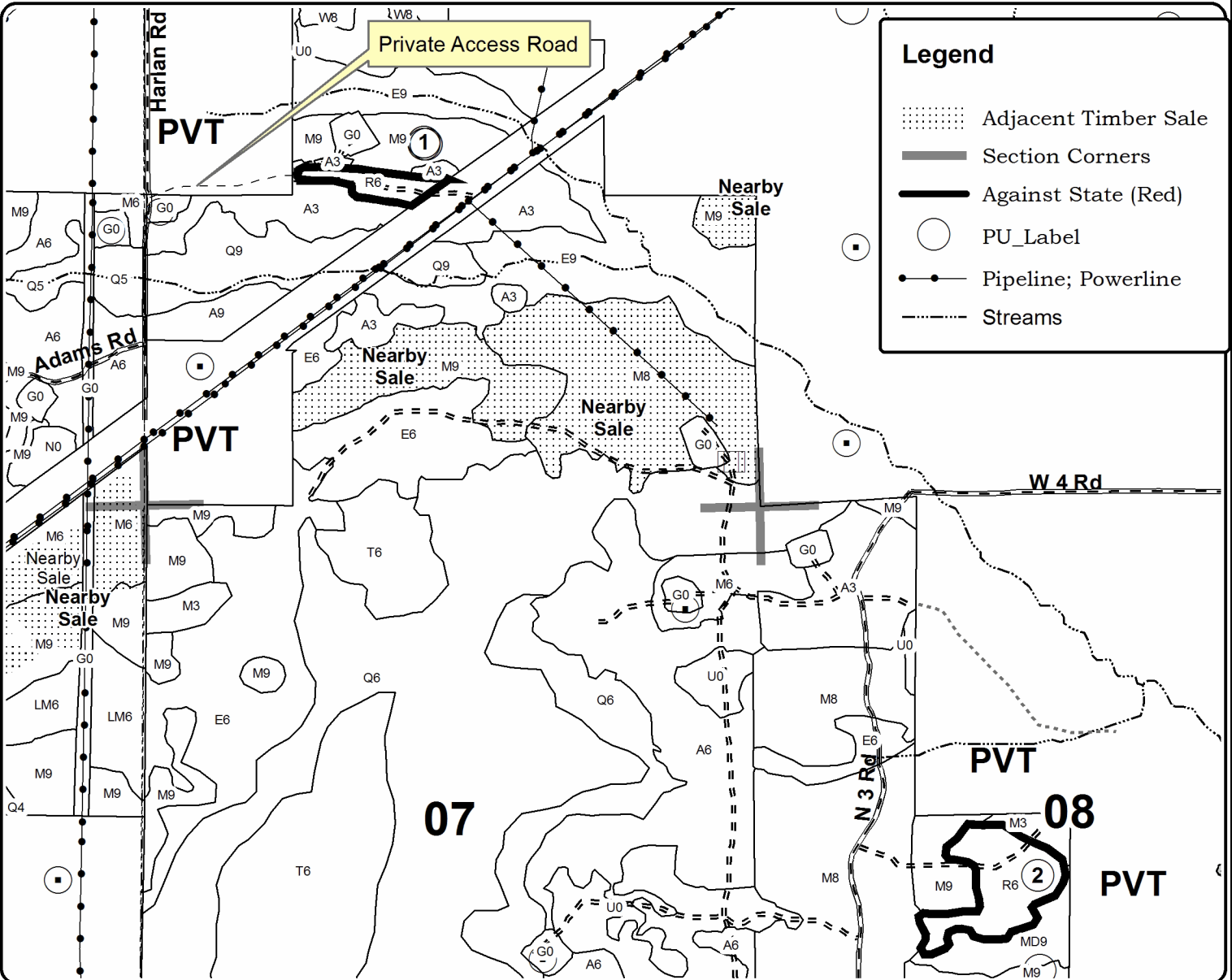
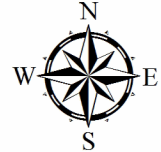
Cover Type				Density			
A = Aspen	H = Hemlock	N = Marsh	U = Upland Brush	0 = Non Stocked	5 = Pole Timber Medium		
B = Paper Birch	J = Jack Pine	O = Oak	UM = Upland Mixed	1 = Seedling Sapling Poor	6 = Pole Timber Well		
C = Cedar	L = Lowland Brush	P = Lowland Poplar	V = Bog or Marsh	2 = Seedling Sapling Medium	7 = Saw Timber Poor		
D = Treed Bog	LM = Lowland Mixed	Q = Mixed Swamp Conifer	W = White Pine	3 = Seedling Sapling Well	8 = Saw Timber Medium		
E = Swamp Hdwoods	M = Mpl, Bch, Brch	R = Red Pine	X = Non Stocked	4 = Pole Timber Poor	9 = Saw Timber Well		
F = Spruce Fir	MC = Mixed Conifer	S = Black Spruce	Z = Water				
G = Grass	MD = Mixed Deciduous	T = Tamarack					

PU	Acres	PU	Acres
1	4.9	4	10.7
2	16.1		
3	8.6		

Four Corners Red

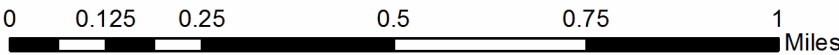
Compartment 62

40.3 Acres



Legend

- Adjacent Timber Sale (dotted pattern)
- Section Corners (solid line)
- Against State (Red) (thick solid line)
- PU_Label (circle)
- Pipeline; Powerline (line with dots)
- Streams (dashed line)





TIMBER SALE MAP

This information provided by authority of Part 525, 1994 PA 451, as amended.

Sale Number	Year
63-012-16-01	16

Forest Management Unit Cadillac	County Wexford	Mapped By Ventimiglia	Date 05/04/16	Page 2	of 2
		Cruised By Ventimiglia			

Township 24N	Range 12W	Section(s) and Subdivision(s) Sec16 NENW Sec 18 NESE	Scale 1:15,840
-----------------	--------------	---------------------------------------------------------	-------------------

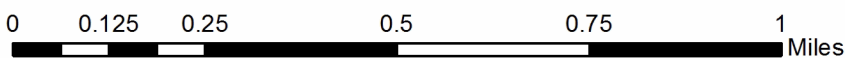
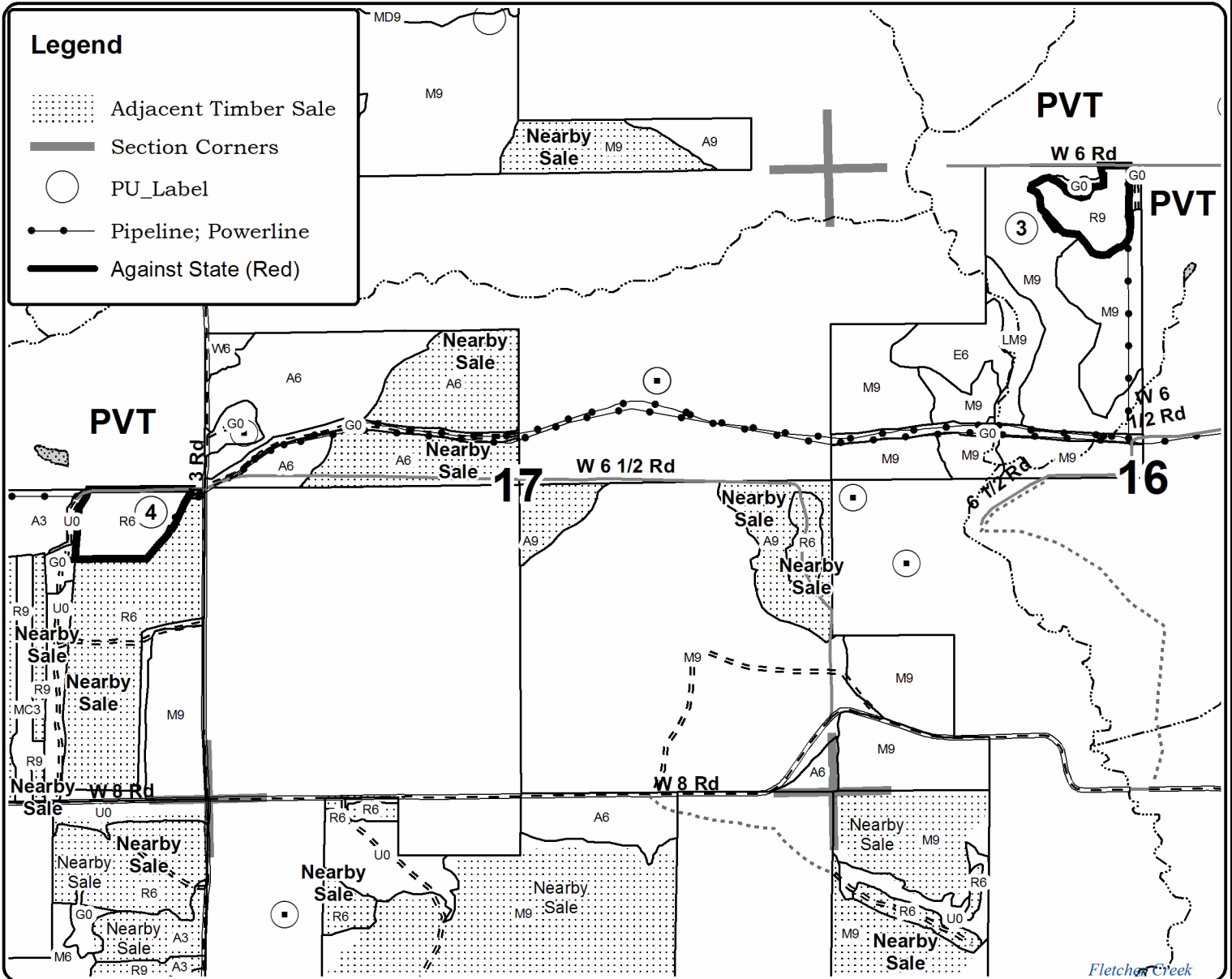
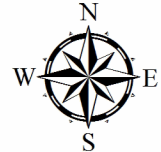
Cover Type				Density			
A = Aspen	H = Hemlock	N = Marsh	U = Upland Brush	0 = Non Stocked	5 = Pole Timber Medium		
B = Paper Birch	J = Jack Pine	O = Oak	UM = Upland Mixed	1 = Seedling Sapling Poor	6 = Pole Timber Well		
C = Cedar	L = Lowland Brush	P = Lowland Poplar	V = Bog or Marsh	2 = Seedling Sapling Medium	7 = Saw Timber Poor		
D = Tread Bog	LM = Lowland Mixed	Q = Mixed Swamp Conifer	W = White Pine	3 = Seedling Sapling Well	8 = Saw Timber Medium		
E = Swamp Hdwoods	M = Mpl, Bch, Brch	R = Red Pine	X = Non Stocked	4 = Pole Timber Poor	9 = Saw Timber Well		
F = Spruce Fir	MC = Mixed Conifer	S = Black Spruce	Z = Water				
G = Grass	MD = Mixed Deciduous	T = Tamarack					

PU	Acres	PU	Acres
1	4.9	4	10.7
2	16.1		
3	8.6		

Four Corners Red

Compartment 62

40.3 Acres



TIMBER SALE INFORMATION

Chippewa Aspen (63-013-16)

Wexford County (Advertised Price \$50,966.35)

SALE NOTE: Unit 2 will require a frozen condition for harvest.

A timber sale contract for this lump sum, sealed bid timber sale will be awarded to the responsible bidder offering the highest sealed bid price. Bids must be at or above the following advertised price for each species:

<u>PRODUCTS & SPECIES</u>	<u>ESTIMATED UNITS*</u>		<u>ADVERTISED PRICE</u>
Sawtimber			
B. T. Aspen	99.40	MBF	\$ 72.00 / MBF
Black Cherry	1.40	MBF	\$ 224.00 / MBF
Red Maple	51.70	MBF	\$ 167.00 / MBF
Red Oak	6.90	MBF	\$ 211.00 / MBF
Red Pine	2.90	MBF	\$ 118.00 / MBF
White Oak	3.10	MBF	\$ 74.00 / MBF
White Pine	35.80	MBF	\$ 63.00 / MBF
Pulpwood			
B. T. Aspen	1,399.00	Cords	\$ 15.95 / Cord
Balsam Fir	37.00	Cords	\$ 12.00 / Cord
Jack Pine	20.00	Cords	\$ 23.15 / Cord
Mixed Hardwood	33.00	Cords	\$ 19.70 / Cord
Red Maple	238.00	Cords	\$ 19.70 / Cord
Red Oak	26.00	Cords	\$ 16.35 / Cord
Red Pine	3.00	Cords	\$ 45.45 / Cord
White Oak	24.00	Cords	\$ 16.35 / Cord
White Pine	101.00	Cords	\$ 10.55 / Cord

* The total volume is statistically estimated within plus (+) or minus (-) 9.68 percent. The estimated units are final and not subject to adjustment. Prospective bidders are urged to examine this timber and to make their own estimates of quantity and quality.

BOND AND PAYMENT SCHEDULE:

1. A bond in the amount of \$2,548.00 to insure faithful performance of the conditions of the contract will be deposited by the successful bidder within 21 days of the sale award.
2. Cutting in any sale or unit without the required advance payment would be considered a trespass.
3. Total payment must be paid in advance or according to the following schedule:
 - (a) Ten percent (10%) of the sale value must be paid within 21 days of the sale award.
 - (b) The 10% down payment will be credited towards the first unit cut.
4. If no cutting takes place, the 10% down payment will not be refunded.
5. Operations on the contract issued will terminate on 09/30/2018.

Description of Timber by Payment Unit (PU)

PU	MARKET GROUP	PRODUCT	QUANTITY	UNIT	ACRES	ADVERTISE PRICE				
1	B. T. Aspen	Sawtimber	25.2	MBF	53.8	\$19,242.00				
	Red Maple		32.1	MBF						
	Red Pine		1.6	MBF						
	White Pine		31.7	MBF						
	B. T. Aspen		Pulpwood	387.0			Cords			
	Jack Pine			17.0			Cords			
	Mixed Hardwood			8.0			Cords			
	<i>Black Cherry</i>			5.0			<i>Cords</i>			
	<i>Paper Birch</i>			3.0			<i>Cords</i>			
	Red Maple			110.0			Cords			
	Red Pine			1.0			Cords			
	White Oak			1.0			Cords			
	White Pine			88.0			Cords			
	2			B. T. Aspen			Sawtimber	74.2	MBF	66.5
Black Cherry		1.4	MBF							
Red Maple		19.6	MBF							
Red Oak		6.9	MBF							
Red Pine		1.3	MBF							
White Oak		3.1	MBF							
White Pine		4.1	MBF							
B. T. Aspen		Pulpwood	1,012.0	Cords						
Balsam Fir			37.0	Cords						
<i>Balsam Fir</i>			<i>Sawtimber</i>	1.7	<i>MBF</i>					
<i>Balsam Fir</i>			<i>Pulpwood</i>	34.0	<i>Cords</i>					
Jack Pine			3.0	Cords						
Mixed Hardwood			25.0	Cords						
<i>Black Cherry</i>			21.0	<i>Cords</i>						
<i>Ironwood</i>			4.0	<i>Cords</i>						
Red Maple			128.0	Cords						
Red Oak			26.0	Cords						
Red Pine		2.0	Cords							
White Oak		23.0	Cords							
White Pine		13.0	Cords							
TOTAL:			202.9	MBF						
TOTAL:			1,948.0	Cords						

Sale Specific Conditions & Requirements

Sale Name: Chippewa Aspen

Sale Number: 63-013-16 Seq#: 1

1 - Sale Area

1.2 - Boundaries

1.2.1 - Painted boundaries (1/14)

The sale boundary is marked and identified by red paint. Exterior sale boundary lines against state are marked with red paint. The painted boundary line trees are not Included Timber and are to be protected.

2 - Timber Specifications

2.1 - Included Timber

2.1.1 - Clearcut unit(s) with unmerchantable trees (6/14)

Within Payment Unit(s) 1 and 2, cut all trees that are two (2) inches or more at DBH except in Payment Unit 1, do not cut any white pine less than 4" dbh.

3 - Payments

3.3 - Pre-measured Sales

3.3.4 - Dividing payment units (7/14)

Payment Unit(s) may be divided at the request of the Purchaser and upon approval of the Unit Manager. Dividing Payment Units is a contract modification which requires a Timber Sale Contract Supplement. There will be only one division per Payment Unit.

4 - Transportation

4.1 - Construction

4.1.3 - Slash and earthen piles (8/04)

Piles or windrows of earth along roads and landings that have been widened or constructed shall be leveled. Slash from road maintenance or construction, including stumps, shall be dispersed throughout the sale.

4.1.12 - No new roads (1/12)

No new roads will be permitted in any Payment Unit. All operations are limited to existing roads. Skid trails only will be allowed.

4.2 - Maintenance

4.2.4 - Grading (12/14)

For completion of the sale, state forest roads must be graded. In general, this will require a road grader or bull dozer to shape up the roads after forest products have been hauled off site. The grading equipment to be used must be approved by the Unit Manager or his/her representative.

4.2.5 - Two wheel drive condition (2/04)

All existing trail roads on and adjacent to the sale area must be passable by two-wheel drive traffic for the duration of the sale.

5 - Operations

5.1 - Notification

5.1.1 - Pre-sale conference (10/11)

A pre-sale conference between the Purchaser and sale administrator is required prior to beginning any operations to determine landing and road locations. The Unit Manager or his/her representative must be contacted at least 3 days in advance to schedule the conference.

5.1.4 - Post-sale conference (6/11)

A post-sale conference on site between the Purchaser and sale administrator is required 3 days prior to the completion of

active logging operations to determine clean-up and repair of landings, road edges, and the fulfillment of other contract specifications.

5.2 - Conduct of Operations

5.2.1 - Slash

5.2.1.8 - Slash height (12/08)

No slash or tree tops may exceed 24 inches in height.

5.2.2 - Hazard Trees/Snags

5.2.2.1 - Den trees (2/04)

Obvious hollow and/or den trees shall be protected and left standing unless they are a safety hazard.

5.2.3 - Operating Restrictions

5.2.3.11 - Coppice regeneration protection (4/10)

Timber harvesting in any Payment Unit must be completed before significant aspen sprouting occurs in that Payment Unit so as to minimize damage to the new regeneration. Any post harvest operations, such as chipping, must be completed before sprouting of regeneration occurs. If it is anticipated that chipping will be delayed, then tops shall be carried to one central location or left unchipped. The Unit Manager or his/her representative may cease such operations if sprouting occurs before the operation is complete.

5.2.4 - Dead and Down Creation

5.2.4.2 - Dead and down creation, hare and grouse (1/14)

To improve habitat for snowshoe hare, grouse, and other species, the Purchaser is to leave two trees, nine (9) inches or larger in diameter on the ground for every three acres. They should be scattered throughout the sale or positioned per the sale administrators instructions. If possible, the logs or trees should be felled so they overlap. Note these pieces should have a minimum length of five feet. They can be of any tree species and can be an un-merchantable piece of wood or a full tree.

5.2.22 - Operating Caution

5.2.22.1 - Operating caution (6/11)

It is recommended, but not required, that within Payment Unit(s) 2, cutting, skidding, and hauling occur during dry summer or frozen winter conditions. The reason for the recommendation is because of wet areas within the unit.

5.2.29 - Shrub protection (9/07)

Do not cut or damage hawthorn, witch-hazel, dogwood or junberry. These woody-shrub plants are highly beneficial to various wildlife species.

5.4 - Soil Protection

5.4.1 - Rutting restriction, general (1/09)

Operations are to cease immediately if equipment and weather conditions result in rutting of roads and skid trails which is 12 inches or greater in depth and 50 feet in length. The Unit Manager or his/her representative may restrict hauling and/or skidding if ruts exceed the specified depth. With the Unit Manager or his/her representative's approval, the Purchaser may return to the area when the risk of rutting has decreased.

6 - Safety and Fire Prevention

6.2 - Signing

6.2.1 - Road posting (9/09)

The Purchaser is responsible for posting and maintaining caution signs on 43 3/4 Rd prior to beginning operations. The road must be posted at appropriate distances from the sale area to warn of logging activity and truck traffic. Signs must be removed when harvest operations are suspended or completed. The Purchaser will provide these signs.

8 - Performance and Settlement

SKIP

8.3.1 - Completion of contract, chipping (1/16)

In addition to cutting, all chipping must be completed by the contract expiration date. If chipping has not been completed, an extension fee or damages may be charged per General Condition & Requirement 7.2 and 8.3.



TIMBER SALE MAP

This information provided by authority of Part 525, 1994 PA 451, as amended.

Sale Number	Year
63-013-16	2016

Forest Management Unit	County	Mapped By	Date	Page	of
Cadillac FMU	Wexford	Malloy	5/23/2016	1	1
Township	Range	Section(s) and Subdivision(s)	Scale		
24N	09W	Section 16 NWNE, NENE, Section 14 SWNE, SENE, SW1/4	1:15,840		

Cover Type

A = Aspen	H = Hemlock	N = Marsh	U = Upland Brush
R = Paper Birch	J = Jack Pine	O = Oak	UM = Upland Mixed
C = Cedar	L = Lowland Brush	P = Lowland Poplar	V = Bog or Marsh
D = Tread Bog	LM = Lowland Mixed	Q = Mixed Swamp Conifer	W = White Pine
E = Swamp Hdwoods	M = Mpl. Bch, Brch	R = Red Pine	X = Non Stocked
F = Spruce Fir	MC = Mixed Conifer	S = Black Spruce	Z = Water
G = Grass	MD = Mixed Deciduous	T = Tamarack	

Density

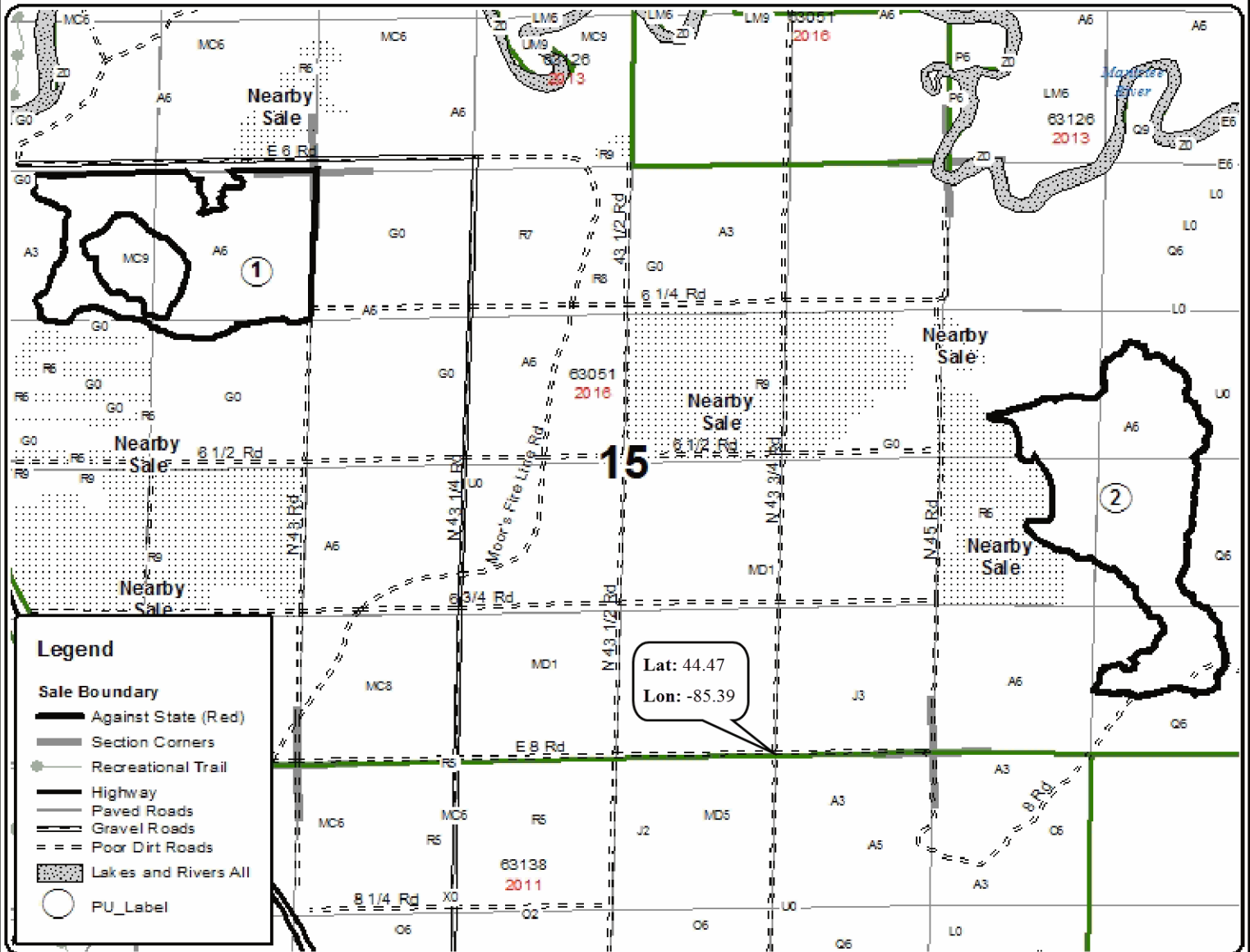
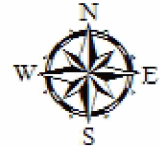
0 = Non Stocked	5 = Pole Timber Medium
1 = Seedling Sapling Poor	6 = Pole Timber Well
2 = Seedling Sapling Medium	7 = Saw Timber Poor
3 = Seedling Sapling Well	8 = Saw Timber Medium
4 = Pole Timber Poor	9 = Saw Timber Well

PU	Acres	PU	Acres
1	53.8		
2	66.5		

Chippewa Aspen

Compartment 51

120.3 Acres



Legend

- Sale Boundary**
- Against State (Red)
- Section Corners
- Recreational Trail
- Highway
- Paved Roads
- Gravel Roads
- Poor Dirt Roads
- ▨ Lakes and Rivers All
- PU_Label

Buckley Strip Red (63-010-16)
; Wexford COUNTY

In response to the notice of sale to be held 3:00 p.m. (local time) on July 25, 2016, I am hereby submitting my sealed bid (firm offer) for the following forest products to be cut. Bids for individual species must be at or above the advertised price. All non-responsive bid forms may be rejected.

<u>PRODUCTS & SPECIES</u>	<u>ESTIMATED VOLUME*</u>	<u>ADVERTISED PRICE</u>	<u>BID PRICE</u>
Sawtimber			
Red Pine	1,619.80 MBF	\$ 127.00/MBF	\$ _____
Pulpwood			
Red Pine	615.00 Cords	\$ 48.95/Cord	\$ _____

*The volumes are statistically estimated within plus (+) or minus (-) 6.23 percent. These estimated volumes are final and not subject to adjustment. Prospective bidders are urged to examine this timber and to make their own estimates of quantity and quality.

I understand that any or all bids may be rejected. All bids must be signed and all bid items must be bid or the bid form may be rejected. I also understand that consideration and awarding a contract will be based upon my past performance and ability to complete the contract based upon equipment and staffing subject to my control.

FEDERAL ID: ____ - ____ - ____ or SOCIAL SECURITY NUMBER: ____ - ____ - ____

Company or individual bidding: _____

Company representative's name: _____

Address: _____

City: _____ State: _____ Zip: _____

IF AVAILABLE, PLEASE PLACE THE PERSONALIZED LABEL FROM YOUR PROSPECTUS IN THE ABOVE BOX.

Individual or company representative's signature: _____ Date: _____

Phone number : _____ Email (optional): _____

THE WINNING BIDDER MUST COMPLETE THE VERIFICATION OF WORKER'S DISABILITY COMPENSATION ACT COMPLIANCE (ON REVERSE SIDE IF DOUBLE SIDED) WITHIN 21 DAYS OF SALE AWARD DATE



FOR DEPARTMENT USE ONLY
Sale Number (XX - XXX - XX - XX)
Forest Management Unit:

TIMBER SALE VERIFICATION OF WORKER'S DISABILITY COMPENSATION ACT COMPLIANCE

*As required by Act 317, P.A. 1969 (Worker's Compensation) and
Part 5 of Act 451 of 1994, as amended.*

VERIFICATION OF WORKER'S DISABILITY COMPENSATION ACT COMPLIANCE

- This verification must be completed and submitted within 21 days of contract award and prior to the issuance of the timber sale contract.
- In addition, if boxes 2B or 2C are checked, then Notice of Exclusion or Certificate of Insurance must be submitted within twenty-one (21) days of the contract award and prior to the issuance of the timber sale contract.
- All information must be typed or printed except for written signatures.

Please Check Appropriate Categories:

1. My business is organized as (you **must** check one of the boxes below):
 - A. Sole Proprietorship (individual)
 - B. Partnership
 - C. Corporation
2. You **must** check one of the boxes below:
 - A. I certify my business is a sole proprietorship and it has no employees but the sole proprietor. I am not subject to the Worker's Compensation Laws.
 - B. I certify my business has satisfied its obligation to the Worker's Compensation Act through the use of an approved Notice of Exclusion (BWC-337, Rev. 5/96). I will provide a copy of the Notice of Exclusion within 21 days of the contract award. (For questions or a copy of the BWC-337, please call the Worker's Compensation Bureau at 517-322-1195).
 - C. I certify my business has a Worker's Compensation Policy. I will provide an original Certificate of Insurance within twenty-one (21) days of the contract award.
3. If you have checked item 2(A) or 2(B), you **must** indicate the number of **both** full-time and part-time employees, other than yourself, including family members and active partners (if none, you must enter "0").

_____ Full-time Employees

_____ Part-time Employees

Name of Business		Federal ID (or) Social Security No.	
Address		Telephone ()	
City	State	ZIP	

I hereby certify that the above information is true and correct. I agree to notify the Michigan DNR of any changes that occur in factors affecting my coverage during any of my present and future operations.

Signature of Owner or Authorized Representative

Title

Date

Please complete the "SEALED BID" information on the next page

Four Corners Red (63-012-16)
; Wexford COUNTY

In response to the notice of sale to be held 3:00 p.m. (local time) on July 25, 2016, I am hereby submitting my sealed bid (firm offer) for the following forest products to be cut. Bids for individual species must be at or above the advertised price. All non-responsive bid forms may be rejected.

<u>PRODUCTS & SPECIES</u>	<u>ESTIMATED VOLUME*</u>	<u>ADVERTISED PRICE</u>	<u>BID PRICE</u>
Sawtimber			
Red Pine	66.50 MBF	\$ 118.00/MBF	\$ _____
Pulpwood			
Red Pine	448.00 Cords	\$ 45.45/Cord	\$ _____

*The volumes are statistically estimated within plus (+) or minus (-) 11.02 percent. These estimated volumes are final and not subject to adjustment. Prospective bidders are urged to examine this timber and to make their own estimates of quantity and quality.

I understand that any or all bids may be rejected. All bids must be signed and all bid items must be bid or the bid form may be rejected. I also understand that consideration and awarding a contract will be based upon my past performance and ability to complete the contract based upon equipment and staffing subject to my control.

FEDERAL ID: ____ - ____ - ____ or SOCIAL SECURITY NUMBER: ____ - ____ - ____

Company or individual bidding: _____

Company representative's name: _____

Address: _____

City: _____ State: _____ Zip: _____

IF AVAILABLE, PLEASE PLACE THE PERSONALIZED LABEL FROM YOUR PROSPECTUS IN THE ABOVE BOX.

Individual or company representative's signature: _____ Date: _____

Phone number : _____ Email (optional): _____

THE WINNING BIDDER MUST COMPLETE THE VERIFICATION OF WORKER'S DISABILITY COMPENSATION ACT COMPLIANCE (ON REVERSE SIDE IF DOUBLE SIDED) WITHIN 21 DAYS OF SALE AWARD DATE



FOR DEPARTMENT USE ONLY
Sale Number (XX - XXX - XX - XX)
Forest Management Unit:

TIMBER SALE VERIFICATION OF WORKER'S DISABILITY COMPENSATION ACT COMPLIANCE

*As required by Act 317, P.A. 1969 (Worker's Compensation) and
Part 5 of Act 451 of 1994, as amended.*

VERIFICATION OF WORKER'S DISABILITY COMPENSATION ACT COMPLIANCE

- This verification must be completed and submitted within 21 days of contract award and prior to the issuance of the timber sale contract.
- In addition, if boxes 2B or 2C are checked, then Notice of Exclusion or Certificate of Insurance must be submitted within twenty-one (21) days of the contract award and prior to the issuance of the timber sale contract.
- All information must be typed or printed except for written signatures.

Please Check Appropriate Categories:

1. My business is organized as (you **must** check one of the boxes below):
 - A. Sole Proprietorship (individual)
 - B. Partnership
 - C. Corporation
2. You **must** check one of the boxes below:
 - A. I certify my business is a sole proprietorship and it has no employees but the sole proprietor. I am not subject to the Worker's Compensation Laws.
 - B. I certify my business has satisfied its obligation to the Worker's Compensation Act through the use of an approved Notice of Exclusion (BWC-337, Rev. 5/96). I will provide a copy of the Notice of Exclusion within 21 days of the contract award. (For questions or a copy of the BWC-337, please call the Worker's Compensation Bureau at 517-322-1195).
 - C. I certify my business has a Worker's Compensation Policy. I will provide an original Certificate of Insurance within twenty-one (21) days of the contract award.
3. If you have checked item 2(A) or 2(B), you **must** indicate the number of **both** full-time and part-time employees, other than yourself, including family members and active partners (if none, you must enter "0").

_____ Full-time Employees

_____ Part-time Employees

Name of Business		Federal ID (or) Social Security No.	
Address		Telephone ()	
City	State	ZIP	

I hereby certify that the above information is true and correct. I agree to notify the Michigan DNR of any changes that occur in factors affecting my coverage during any of my present and future operations.

Signature of Owner or Authorized Representative

Title

Date

Please complete the "SEALED BID" information on the next page

Stoney Removal (63-011-16)
 ; Missaukee COUNTY

In response to the notice of sale to be held 3:00 p.m. (local time) on July 25, 2016, I am hereby submitting my sealed bid (firm offer) for the following forest products to be cut. Bids for individual species must be at or above the advertised price. All non-responsive bid forms may be rejected.

<u>PRODUCTS & SPECIES</u>	<u>ESTIMATED VOLUME*</u>	<u>ADVERTISED PRICE</u>	<u>BID PRICE</u>
Sawtimber			
B. T. Aspen	0.70 MBF	\$ 89.00/MBF	\$ _____
Northern Pin Oak	35.20 MBF	\$ 198.00/MBF	\$ _____
Red Maple	2.10 MBF	\$ 205.00/MBF	\$ _____
White Pine	52.20 MBF	\$ 77.00/MBF	\$ _____
Pulpwood			
B. T. Aspen	25.00 Cords	\$ 19.60/Cord	\$ _____
Jack Pine	70.00 Cords	\$ 28.50/Cord	\$ _____
Northern Pin Oak	129.00 Cords	\$ 20.10/Cord	\$ _____
Red Maple	18.00 Cords	\$ 24.25/Cord	\$ _____
White Pine	178.00 Cords	\$ 12.95/Cord	\$ _____

*The volumes are statistically estimated within plus (+) or minus (-) 15.86 percent. These estimated volumes are final and not subject to adjustment. Prospective bidders are urged to examine this timber and to make their own estimates of quantity and quality.

I understand that any or all bids may be rejected. All bids must be signed and all bid items must be bid or the bid form may be rejected. I also understand that consideration and awarding a contract will be based upon my past performance and ability to complete the contract based upon equipment and staffing subject to my control.

FEDERAL ID: ____ - ____ - ____ or SOCIAL SECURITY NUMBER: ____ - ____ - ____

Company or individual bidding: _____

Company representative's name: _____

Address: _____

City: _____ State: _____ Zip: _____

IF AVAILABLE, PLEASE PLACE THE PERSONALIZED LABEL FROM YOUR PROSPECTUS IN THE ABOVE BOX.

Individual or company representative's signature: _____ Date: _____

Phone number : _____ Email (optional): _____

THE WINNING BIDDER MUST COMPLETE THE VERIFICATION OF WORKER'S DISABILITY COMPENSATION ACT COMPLIANCE (ON REVERSE SIDE IF DOUBLE SIDED) WITHIN 21 DAYS OF SALE AWARD DATE



FOR DEPARTMENT USE ONLY	
Sale Number (XX - XXX - XX - XX)	
Forest Management Unit:	

TIMBER SALE VERIFICATION OF WORKER'S DISABILITY COMPENSATION ACT COMPLIANCE

As required by Act 317, P.A. 1969 (Worker's Compensation) and
Part 5 of Act 451 of 1994, as amended.

VERIFICATION OF WORKER'S DISABILITY COMPENSATION ACT COMPLIANCE

- This verification must be completed and submitted within 21 days of contract award and prior to the issuance of the timber sale contract.
- In addition, if boxes 2B or 2C are checked, then Notice of Exclusion or Certificate of Insurance must be submitted within twenty-one (21) days of the contract award and prior to the issuance of the timber sale contract.
- All information must be typed or printed except for written signatures.

Please Check Appropriate Categories:

1. My business is organized as (you **must** check one of the boxes below):
 - A. Sole Proprietorship (individual)
 - B. Partnership
 - C. Corporation
2. You **must** check one of the boxes below:
 - A. I certify my business is a sole proprietorship and it has no employees but the sole proprietor. I am not subject to the Worker's Compensation Laws.
 - B. I certify my business has satisfied its obligation to the Worker's Compensation Act through the use of an approved Notice of Exclusion (BWC-337, Rev. 5/96). I will provide a copy of the Notice of Exclusion within 21 days of the contract award. (For questions or a copy of the BWC-337, please call the Worker's Compensation Bureau at 517-322-1195).
 - C. I certify my business has a Worker's Compensation Policy. I will provide an original Certificate of Insurance within twenty-one (21) days of the contract award.
3. If you have checked item 2(A) or 2(B), you **must** indicate the number of **both** full-time and part-time employees, other than yourself, including family members and active partners (if none, you must enter "0").

_____ Full-time Employees

_____ Part-time Employees

Name of Business		Federal ID (or) Social Security No.	
Address		Telephone ()	
City	State	ZIP	

I hereby certify that the above information is true and correct. I agree to notify the Michigan DNR of any changes that occur in factors affecting my coverage during any of my present and future operations.

Signature of Owner or Authorized Representative

Title

Date

Please complete the "SEALED BID" information on the next page

Chippewa Aspen (63-013-16)
 ; Wexford COUNTY

In response to the notice of sale to be held 3:00 p.m. (local time) on July 25, 2016, I am hereby submitting my sealed bid (firm offer) for the following forest products to be cut. Bids for individual species must be at or above the advertised price. All non-responsive bid forms may be rejected.

<u>PRODUCTS & SPECIES</u>	<u>ESTIMATED VOLUME*</u>	<u>ADVERTISED PRICE</u>	<u>BID PRICE</u>
Sawtimber			
B. T. Aspen	99.40 MBF	\$ 72.00/MBF	\$ _____
Black Cherry	1.40 MBF	\$ 224.00/MBF	\$ _____
Red Maple	51.70 MBF	\$ 167.00/MBF	\$ _____
Red Oak	6.90 MBF	\$ 211.00/MBF	\$ _____
Red Pine	2.90 MBF	\$ 118.00/MBF	\$ _____
White Oak	3.10 MBF	\$ 74.00/MBF	\$ _____
White Pine	35.80 MBF	\$ 63.00/MBF	\$ _____
Pulpwood			
B. T. Aspen	1,399.00 Cords	\$ 15.95/Cord	\$ _____
Balsam Fir	37.00 Cords	\$ 12.00/Cord	\$ _____
Jack Pine	20.00 Cords	\$ 23.15/Cord	\$ _____
Mixed Hardwood	33.00 Cords	\$ 19.70/Cord	\$ _____
Red Maple	238.00 Cords	\$ 19.70/Cord	\$ _____
Red Oak	26.00 Cords	\$ 16.35/Cord	\$ _____
Red Pine	3.00 Cords	\$ 45.45/Cord	\$ _____
White Oak	24.00 Cords	\$ 16.35/Cord	\$ _____
White Pine	101.00 Cords	\$ 10.55/Cord	\$ _____

*The volumes are statistically estimated within plus (+) or minus (-) 9.68 percent. These estimated volumes are final and not subject to adjustment. Prospective bidders are urged to examine this timber and to make their own estimates of quantity and quality.

I understand that any or all bids may be rejected. All bids must be signed and all bid items must be bid or the bid form may be rejected. I also understand that consideration and awarding a contract will be based upon my past performance and ability to complete the contract based upon equipment and staffing subject to my control.

FEDERAL ID: ____ - ____ - ____ or SOCIAL SECURITY NUMBER: ____ - ____ - ____

Company or individual bidding: _____

Company representative's name: _____

Address: _____

City: _____ State: _____ Zip: _____

IF AVAILABLE, PLEASE PLACE THE PERSONALIZED LABEL FROM YOUR PROSPECTUS IN THE ABOVE BOX.

Individual or company representative's signature: _____ Date: _____

Phone number : _____ Email (optional): _____

THE WINNING BIDDER MUST COMPLETE THE VERIFICATION OF WORKER'S DISABILITY COMPENSATION ACT COMPLIANCE (ON REVERSE SIDE IF DOUBLE SIDED) WITHIN 21 DAYS OF SALE AWARD DATE



FOR DEPARTMENT USE ONLY	
Sale Number (XX - XXX - XX - XX)	
Forest Management Unit:	

TIMBER SALE VERIFICATION OF WORKER'S DISABILITY COMPENSATION ACT COMPLIANCE

As required by Act 317, P.A. 1969 (Worker's Compensation) and
Part 5 of Act 451 of 1994, as amended.

VERIFICATION OF WORKER'S DISABILITY COMPENSATION ACT COMPLIANCE

- This verification must be completed and submitted within 21 days of contract award and prior to the issuance of the timber sale contract.
- In addition, if boxes 2B or 2C are checked, then Notice of Exclusion or Certificate of Insurance must be submitted within twenty-one (21) days of the contract award and prior to the issuance of the timber sale contract.
- All information must be typed or printed except for written signatures.

Please Check Appropriate Categories:

1. My business is organized as (you **must** check one of the boxes below):
 - A. Sole Proprietorship (individual)
 - B. Partnership
 - C. Corporation
2. You **must** check one of the boxes below:
 - A. I certify my business is a sole proprietorship and it has no employees but the sole proprietor. I am not subject to the Worker's Compensation Laws.
 - B. I certify my business has satisfied its obligation to the Worker's Compensation Act through the use of an approved Notice of Exclusion (BWC-337, Rev. 5/96). I will provide a copy of the Notice of Exclusion within 21 days of the contract award. (For questions or a copy of the BWC-337, please call the Worker's Compensation Bureau at 517-322-1195).
 - C. I certify my business has a Worker's Compensation Policy. I will provide an original Certificate of Insurance within twenty-one (21) days of the contract award.
3. If you have checked item 2(A) or 2(B), you **must** indicate the number of **both** full-time and part-time employees, other than yourself, including family members and active partners (if none, you must enter "0").

_____ Full-time Employees

_____ Part-time Employees

Name of Business		Federal ID (or) Social Security No.	
Address		Telephone ()	
City	State	ZIP	

I hereby certify that the above information is true and correct. I agree to notify the Michigan DNR of any changes that occur in factors affecting my coverage during any of my present and future operations.

Signature of Owner or Authorized Representative

Title

Date

Please complete the "SEALED BID" information on the next page