



**DEPARTMENT OF NATURAL RESOURCES
STATE OF MICHIGAN**

TIMBER SALE PROSPECTUS #5606

REVISION NOTICE #1 - April 6, 2016

SCHEDULED SALE DATE AND TIME: 3:00 p.m. (local time) on Tuesday, April 26, 2016

LOCATION: INDIAN RIVER FIELD OFFICE, 6984 WILSON RD, INDIAN RIVER, MI 49749

This prospectus has been modified with the following changes.

UMBELLUS ASPEN timber sale (52-105-15) conditions and requirements have been modified.

ANOTHER ASPEN CLEARCUT timber sale (52-118-15) conditions and requirements have been modified.

FROST TRAIL MIX timber sale (52-121-15) conditions and requirements have been modified.

The sale map for the UMBELLUS ASPEN timber sale (52-105-15) has been updated. Please use the attached sale map when bidding on this sale and disregard the original sale map sent with the prospectus.

The sale map for the ANOTHER ASPEN CLEARCUT timber sale (52-118-15) has been updated. Please use the attached sale map when bidding on this sale and disregard the original sale map sent with the prospectus.

The sale map for the ANOTHER ASPEN CLEARCUT timber sale (52-118-15) has been updated. Please use the attached sale map when bidding on this sale and disregard the original sale map sent with the prospectus.

We apologize for any inconvenience this may have caused. If you need assistance, please contact Shannon Harig at 231-238-9314 ext. 4742.



TIMBER SALE MAP

This information provided by authority of Part 525, 1994 PA 451, as amended.

52-105-15-01 2015

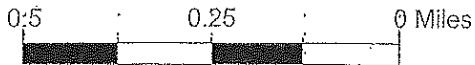
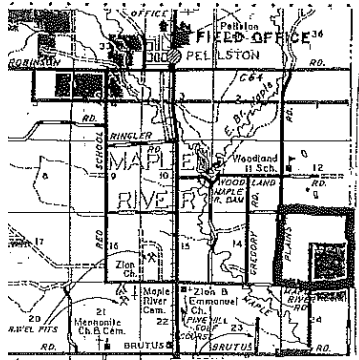
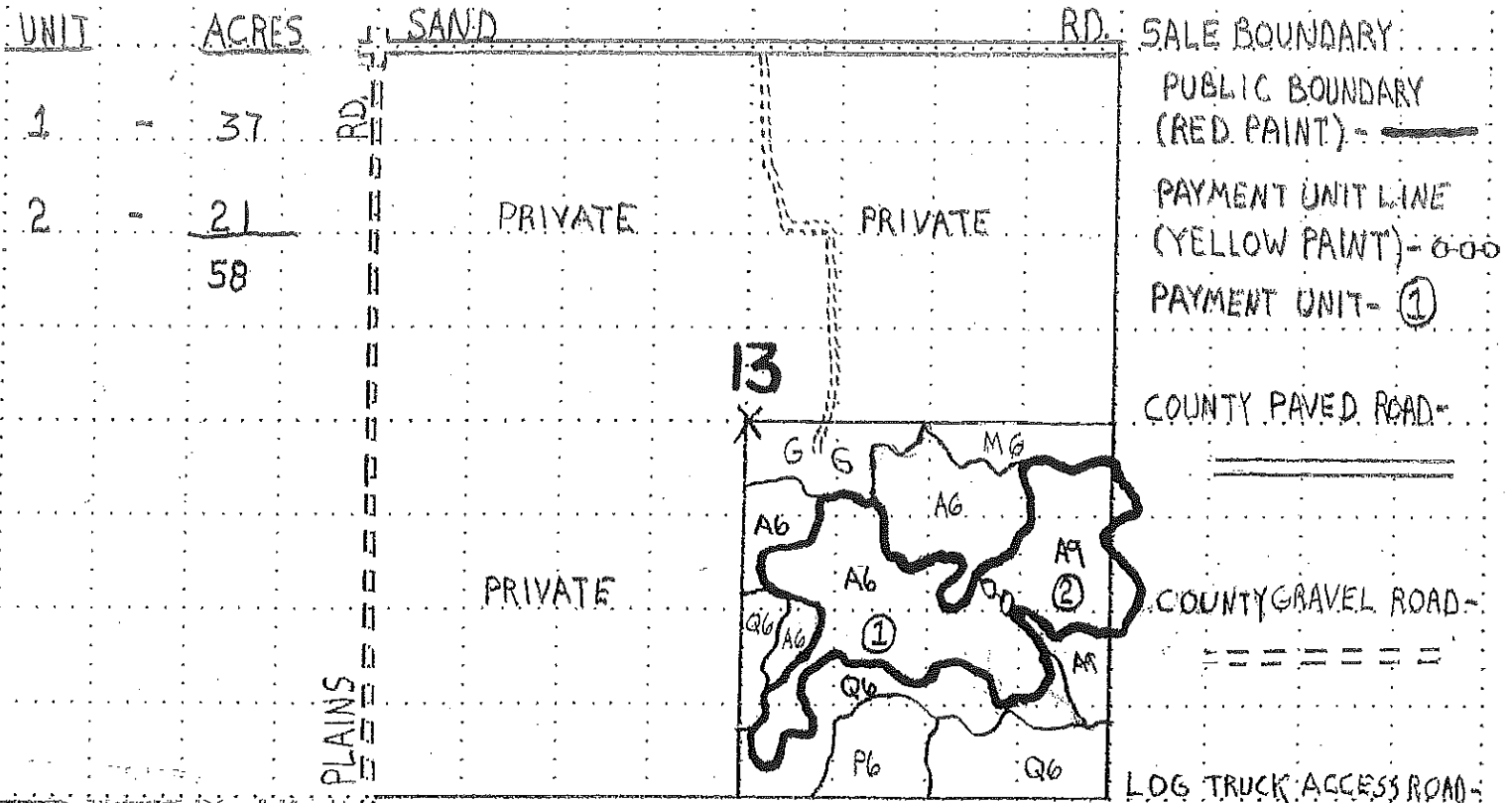
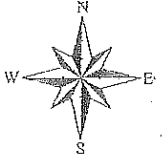
Forest Management Unit GAYLORD-NORTH		County EMMET/CHEBOYGAN	Mapped By STACKS	Date 07/31/2015	Page 1	of 1
Township T36N	Range R04W	Section(s) and Subdivision(s) 13 SE 1/4 : T36N R03W 18W 1/2 SW				
Cover Type			Density			
A = Aspen	J = Jack Pine	O = Oak	U = Upland Brush	0 = Non Stocked	5 = Pole Timber Medium	
B = Paper Birch	K = Rock	P = Lowland Poplar	UM = Upland Mix Forest	1 = Seedling Sapling Poor	6 = Pole Timber Well	
C = Cedar	L = Lowland Brush	Q = Mixed Swamp Conifer	V = Bog or Marsh	2 = Seedling Sapling Medium	7 = Saw Timber Poor	
D = Tread Bog	LM = Lowland Mix Forest	R = Red Pine	W = White Pine	3 = Seedling Sapling Well	8 = Saw Timber Medium	
E = Swamp Hardwoods	M = Maple, Beech, Birch	S = Black Spruce	X = Non Stocked	4 = Pole Timber Poor	9 = Saw Timber Well	
F = Spruce/Fir	MC = Mixed Conifer	T = Tamarack	Y = Sand			
G = Grass	MD = Mixed Deciduous	Z = Water				
H = Hemlock	N = Marsh					

COMPARTMENT 130

UMBELLUS ASPEN

EMMET/CHEBOYGAN COUNTIES

58 ACRES



1" = 1/4 MILE

X - 84° 44' 26.95"
45° 30' 53.81"

This prospectus has been modified with the following changes.

UMBELLUS ASPEN timber sale (52-105-15) conditions and requirements have been modified.

ANOTHER ASPEN CLEARCUT timber sale (52-118-15) conditions and requirements have been modified.

FROST TRAIL MIX timber sale (52-121-15) conditions and requirements have been modified.

The sale map for the UMBELLUS ASPEN timber sale (52-105-15) has been updated. Please use the attached sale map when bidding on this sale and disregard the original sale map sent with the prospectus.

The sale map for the ANOTHER ASPEN CLEARCUT timber sale (52-118-15) has been updated. Please use the attached sale map when bidding on this sale and disregard the original sale map sent with the prospectus.

The sale map for the ANOTHER ASPEN CLEARCUT timber sale (52-118-15) has been updated. Please use the attached sale map when bidding on this sale and disregard the original sale map sent with the prospectus.

We apologize for any inconvenience this may have caused. If you need assistance, please contact Shannon Harig at 231-238-9314 ext. 4742.



TIMBER SALE MAP

52 - 118

15

This information provided by authority of Part 525, 1994 PA 451, as amended.

Forest Management Unit

County

Mapped By TSP

Date

Page

of

Gaylord Management Unit

Cheboygan

Cruised By TSP

09/08/2015

1

2

Township

Range

Section(s) and Subdivision(s) Sec 11: S1/2SE

Scale

35N

01W

Sec 13: S1/2NE, SE; Sec 14: NE

1:15,840

Cover Type

- | | | | |
|-------------------|----------------------|-------------------------|-------------------|
| A = Aspen | H = Hemlock | N = Marsh | U = Upland Brush |
| B = Paper Birch | J = Jack Pine | O = Oak | UM = Upland Mixed |
| C = Cedar | L = Lowland Brush | P = Lowland Poplar | V = Bog or Marsh |
| D = Treed Bog | LM = Lowland Mixed | Q = Mixed Swamp Conifer | W = White Pine |
| E = Swamp Hdwoods | M = Mpl, Bch, Brch | R = Red Pine | X = Non Stocked |
| F = Spruce Fir | MC = Mixed Conifer | S = Black Spruce | Z = Water |
| G = Grass | MD = Mixed Deciduous | T = Tamarack | |

Density

- | | |
|-----------------------------|------------------------|
| 0 = Non Stocked | 5 = Pole Timber Medium |
| 1 = Seedling Sapling Poor | 6 = Pole Timber Well |
| 2 = Seedling Sapling Medium | 7 = Saw Timber Poor |
| 3 = Seedling Sapling Well | 8 = Saw Timber Medium |
| 4 = Pole Timber Poor | 9 = Saw Timber Well |

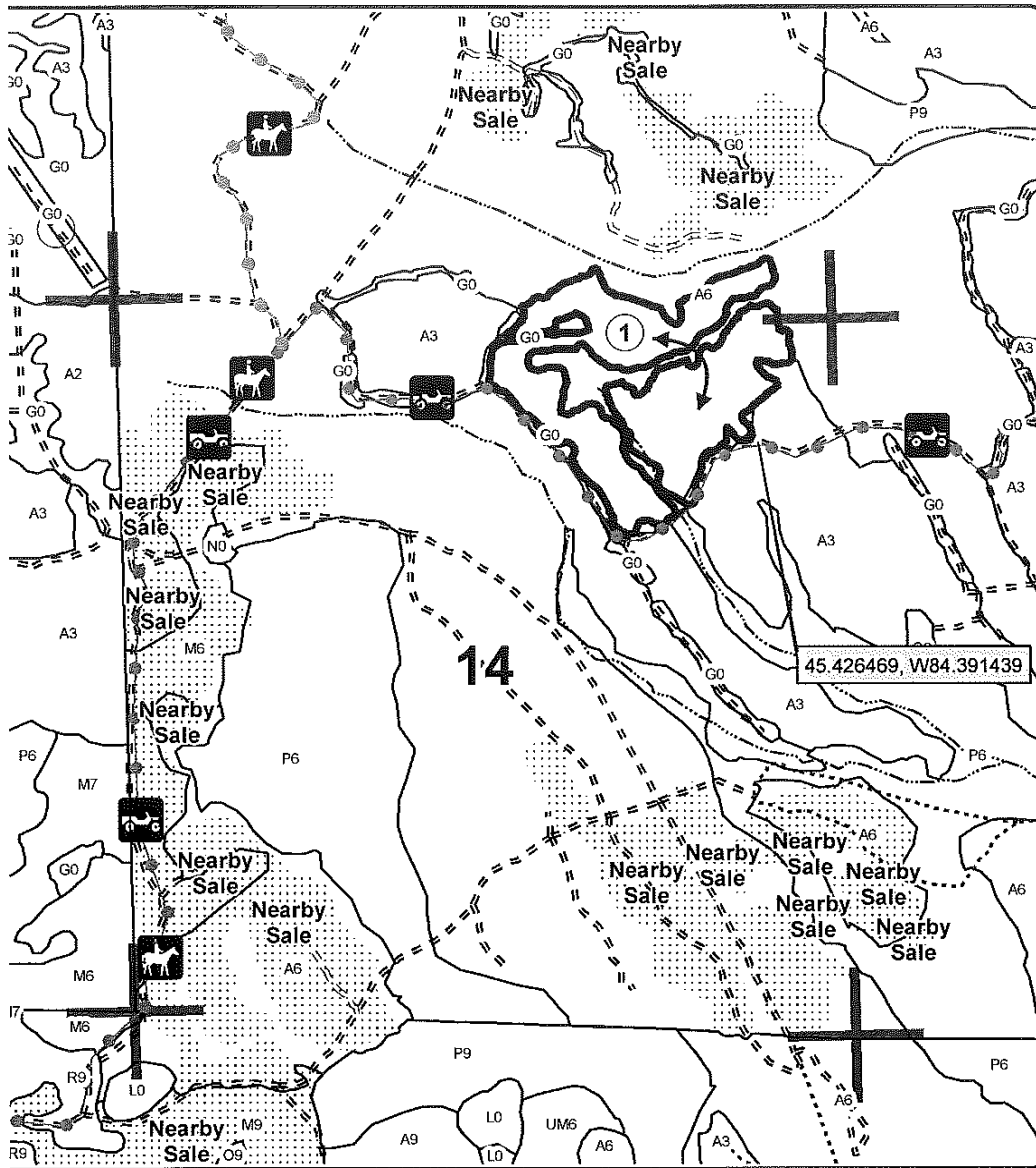
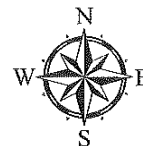
Acres

- | | |
|---|----|
| 1 | 50 |
| 2 | 35 |
| 3 | 40 |

Another Aspen Clearcut

Compartment 187

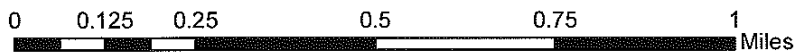
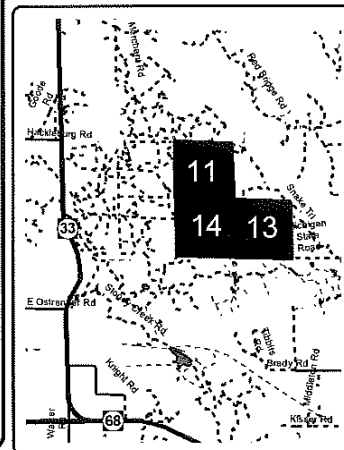
125 Acres



Legend

- Against State (Red)
- PU_Label
- Horse Trails
- ORV Routes
- Section Corners
- Adjacent Stand Boundaries
- Adjacent Timber Sale
- Poor Dirt Roads
- Closed Roads
- Recreational Trail
- Streams

Locator Map
1:200,000



This prospectus has been modified with the following changes.

UMBELLUS ASPEN timber sale (52-105-15) conditions and requirements have been modified.

ANOTHER ASPEN CLEARCUT timber sale (52-118-15) conditions and requirements have been modified.

FROST TRAIL MIX timber sale (52-121-15) conditions and requirements have been modified.

The sale map for the UMBELLUS ASPEN timber sale (52-105-15) has been updated. Please use the attached sale map when bidding on this sale and disregard the original sale map sent with the prospectus.

The sale map for the ANOTHER ASPEN CLEARCUT timber sale (52-118-15) has been updated. Please use the attached sale map when bidding on this sale and disregard the original sale map sent with the prospectus.

The sale map for the ANOTHER ASPEN CLEARCUT timber sale (52-118-15) has been updated. Please use the attached sale map when bidding on this sale and disregard the original sale map sent with the prospectus.

We apologize for any inconvenience this may have caused. If you need assistance, please contact Shannon Harig at 231-238-9314 ext. 4742.



TIMBER SALE MAP

This information provided by authority of Part 525, 1994 PA 451, as amended.

Forest Management Unit		County	Mapped By	Date	Page	of
Gaylord Management Unit		Cheboygan	TSP	09/08/2015	2	2
Township	Range	Section(s) and Subdivision(s)		Scale		
35N	01W	Sec 11: S1/2SE Sec 13: S1/2NE, SE; Sec 14: NE		1:15,840		

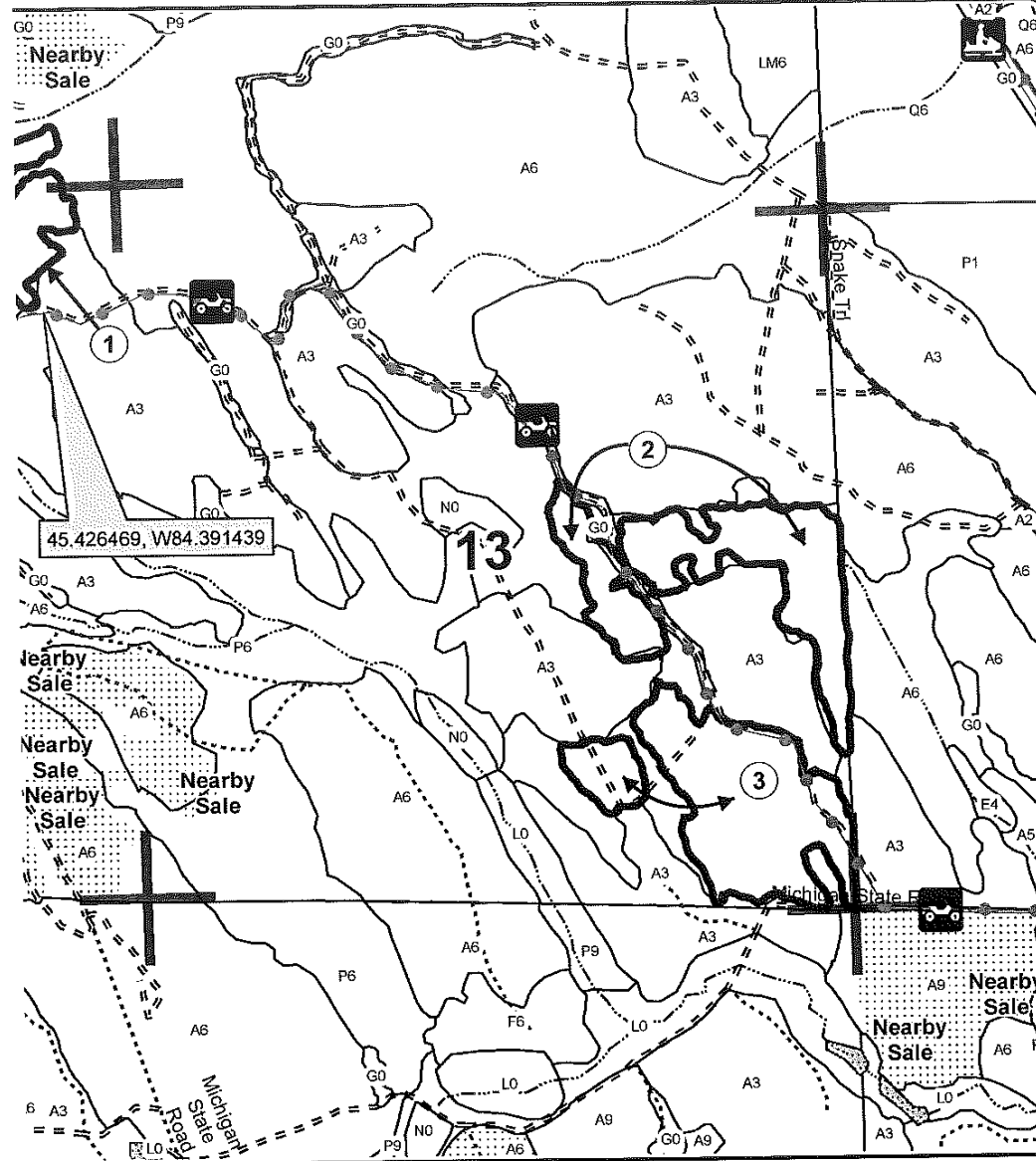
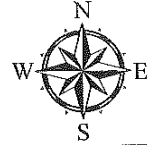
Cover Type				Density			
A = Aspen	H = Hemlock	N = Marsh	U = Upland Brush	0 = Non Stocked	5 = Pole Timber Medium		
B = Paper Birch	J = Jack Pine	O = Oak	UM = Upland Mixed	1 = Seedling Sapling Poor	6 = Pole Timber Well		
C = Cedar	L = Lowland Brush	P = Lowland Poplar	V = Bog or Marsh	2 = Seedling Sapling Medium	7 = Saw Timber Poor		
D = Treed Bog	LM = Lowland Mixed	Q = Mixed Swamp Conifer	W = White Pine	3 = Seedling Sapling Well	8 = Saw Timber Medium		
E = Swamp Hdwoods	M = Mpl, Bch, Birch	R = Red Pine	X = Non Stocked	4 = Pole Timber Poor	9 = Saw Timber Well		
F = Spruce Fir	MC = Mixed Conifer	S = Black Spruce	Z = Water				
G = Grass	MD = Mixed Deciduous	T = Tamarack					

PU	Acres
1	50
2	35
3	40

Another Aspen Clearcut

Compartment 187

125 Acres



Legend

- Against State (Red)
- PU_Label
- ORV Routes
- Snowmobile Trails
- Section Corners
- Adjacent Stand Boundaries
- Adjacent Timber Sale
- Gravel Roads
- Poor Dirt Roads
- Closed Roads
- Recreational Trail
- Lakes and Rivers All
- Streams

Locator Map
1:200,000

