



**DEPARTMENT OF NATURAL RESOURCES
STATE OF MICHIGAN**

TIMBER SALE PROSPECTUS #5702

SCHEDULED SALE DATE AND TIME: 3:00 p.m. (local time) on September 7, 2016.

LOCATION: ESCANABA OFFICE, 6833 HWY 2, 41 & M-35, GLADSTONE, MI 49837.

PROSPECTUS NOTE: The bidder is advised to inspect the sale area and review the location, estimated volumes, operating costs and contract terms of proposed sales. Please be aware that some landowners may request 60 days or more notice for access across their land.

Notice is hereby given that bids will be received by the Unit Manager, ESCANABA MANAGEMENT UNIT, for certain timber on the following described lands:

Makosky Split (33-001-16)

Delta County, Advertised Price \$133,293.20, 356.7 Acres, Hardwood, Spruce/Fir/Tamarack.

SALE NOTE: Alternate access through private property will be the responsibility of the purchaser.

A private landowner to the west of Payment Unit 2 has expressed interest in having a harvest done on his property at the same time.

C-34 East (33-006-16)

Menominee County, Advertised Price \$6,981.65, 19.2 Acres, Aspen, Hardwood.

SALE NOTE: A recreation site such as a trail, pathway, or campground is within the sale area or the vicinity. Certain restrictions/specifications may be applicable including time restrictions.

Hayward Lake 'ELB' (33-028-16)

Menominee County, Advertised Price \$126,249.70, 163.9 Acres, N White Cedar, Spruce/Fir/Tamarack.

SALE NOTE: Within the sale area and adjacent to it, is the Hayward Lake access site and parking area. The DNR has an easement for the access road that leads to the access site. The parking area, access site, and access road needs to be in good condition at all times and accessible for the public. The Eastern Larch Beetle is present and has caused some tamarack mortality, but at this time there has been a very minor loss of wood products. Access into payment unit 1 will be through private property, they have given tentative permission for a contractor to use their roads. Written permission will be required.

A recreation site such as a trail, pathway, or campground is within the sale area or the vicinity. Certain restrictions/specifications may be applicable including time restrictions.

BID INSTRUCTIONS (VER. 07/27/2016):

1. Scheduled Bid Location, Date, and Time (2/11)

Bids must be received by the Unit Manager, ESCANABA OFFICE, 6833 HWY 2, 41 & M-35, GLADSTONE, MI 49837, no later than 3:00 p.m. (local time) on September 7, 2016. For further information concerning this sale, contact Eric Thompson at 906-786-2354.

2. Bidder's Qualifications (5/16)

Purchaser shall obtain workers compensation insurance to cover claims under Michigan's Worker's Disability Compensation Act of 1969 or similar employee benefit act of any other state applicable to an employee. If all or part of a timber sale was prepared by a private contractor, the contractor and that contractor's company are not permitted to bid on the timber sale contract. Bids will not be accepted from individuals or companies appearing on the DNR/FRD No-Bid List. This list contains the names of purchasers who previously failed to execute a contract within 21-days or who have a history of poor performance.

3. Preparation of Sealed Bids (5/16)

Bid Forms may be completed online thru Michigan DNR Timber Sale Online Bidding (OLB) at www.michigan.gov/timberbidding or by completing the hardcopy Bid Form found in the Timber Sale Prospectus. Hardcopy Bid Forms shall be manually signed in ink. Registration in OLB is considered your 'signature' for all bids submitted thru that system. Bid prices must be entered for each species and product in the Bid Price column for all material subject to bidding and all fill-in blanks must be completed. If erasures or other changes appear on the hardcopy Bid Form, each erasure or change must be initialed by the person signing the bid.

4. Submission of Sealed Bids (5/16)

Bid forms may be obtained from the Unit Manager or thru OLB. Bids may be submitted hardcopy or thru OLB. All hardcopy bids must be submitted on the bid form and in an envelope clearly identified as described in this section. NOTE: Only one bid form per bid envelope. Sealed bids must be submitted to the Unit office designated in the prospectus and must be submitted at or prior to the time established in the prospectus. The envelope should show on the outside (a) the sale name or number and (b) the date and time of bid opening, as shown in the prospectus. Bids received after the time specified in the sale prospectus are late bids and will be rejected.

It is possible for a bidder to submit multiple bids on a single sale. For example, a bid may be submitted hardcopy and a bid may be submitted thru OLB. Or, two bidders from the same company could both submit bids on the same sale. If this were to happen, the State would accept all bids received and award the contract accordingly. All bidding and contractual requirements would apply to all bids received.

5. Public Opening of Sealed Bids (7/16)

If conditions permit, the sealed bids will be publicly opened and posted at the time and place set in the prospectus.

If a bidder, present at a bid opening, has submitted bids on more than one sale, that bidder may withdraw their unopened bid envelopes or announce the withdrawal of their online bid after being declared the successful bidder on one sale.

6. Award of Contract (1/11)

Award of the contract will be made to the Bidder whose bid, conforming to the prospectus, is most advantageous to the State of Michigan on the basis of total value at rates bid for the estimated quantities. The State reserves the right to reject any bid or waive any minor irregularity in bids received. A written award mailed (or otherwise furnished) to the successful Bidder shall be deemed to result in a binding contract without further action by either party.

7. Down Payment (1/11)

The Bidder to whom award is made must make a down payment within 21 days of the sale award. The amount of the down payment will be calculated as shown in the Bond and Payment Schedule of this prospectus. Only cash may be used to meet this requirement.

8. Performance Security (1/11)

As guarantee of faithful performance, a cash bond, certificate of deposit, surety bond or irrevocable letter of credit (LOC) is required within 21 days of the sale award. The amount of the performance security is shown in the Bond and

Payment Schedule of this prospectus. If an LOC or surety is used, the coverage must extend for at least 6 months beyond the contract expiration.

9. Timber Sale Contract (9/14)

Additional conditions and requirements common to all timber sales are listed on the timber sale contract (R4031) and are available on line at www.michigan.gov/timber. Contact the Unit Manager for additional information or a sample contract. Within 21 days of the date of the award letter, the bidder must sign the contract and provide the required down payment, performance security, and verification of worker's disability compensation. The down payment and performance security shall be in accordance with the provisions of the timber sale contract, in the sums stated in this prospectus. If these actions are not taken, then the Bidder, the Bidder's corporation, and the corporation's principals may not be permitted to bid on State timber sales for a period of 1 year. In addition, the Bidder certifies that if awarded this contract, the Bidder will complete the timber sale contract in accordance with its terms and any modifications thereof including requirements to purchase, cut, and remove the included timber by the expiration date.

10. Disclaimer of Estimates and Bidder's Warranty of Inspection (7/16)

Before submitting this bid, the Bidder is advised and cautioned to inspect the sale area, review the requirements of the sale contract, and take other steps as may be reasonably necessary to ascertain the location, estimated volumes, construction estimates, and operating costs of the proposed sale. Failure to do so will not relieve the Bidder from responsibility for completing the contract.

The Bidder warrants that this bid is submitted solely on the basis of the Bidder's examination and inspection of the quality and quantity of the timber offered for sale and the Bidder's opinion of the value thereof and the costs of recovery. No reliance should be placed on the State of Michigan's estimates of timber quality, quantity or costs of recovery. Bidder further acknowledges that the State of Michigan: (i) expressly disclaims any warranty of fitness of timber for any purpose; (ii) offers this timber as is without any warranty of quality (merchantability) or quantity and (iii) expressly disclaims any warranty as to the quantity or quality of timber sold.

11. Certification and Chain-of-Custody (10/14)

Unless otherwise indicated in the contract under section 7 – Other Conditions of the Sale Specific Conditions & Requirements, the area encompassed by this timber sale is certified to the standards of the Forest Stewardship Council (FSC) - Certificate #SCS-FM/COC-00090N and the Sustainable Forestry Initiative (SFI) - Certificate # NSF-SFIS-5Y031-SF5. Forest products from this sale may be delivered to the mill as "FSC 100% and / or SFI certified" as long as the contractor hauling the forest products is chain-of-custody (COC) certified or covered under a COC certificate from the destination mill. The purchaser is responsible for maintaining COC after leaving the sale area.

KEITH CREAGH
Director

TIMBER SALE INFORMATION

Makosky Split (33-001-16)

Delta County (Advertised Price \$133,293.20)

SALE NOTE: Alternate access through private property will be the responsibility of the purchaser.

A private landowner to the west of Payment Unit 2 has expressed interest in having a harvest done on his property at the same time.

A timber sale contract for this lump sum, sealed bid timber sale will be awarded to the responsible bidder offering the highest sealed bid price. Bids must be at or above the following advertised price for each species:

<u>PRODUCTS & SPECIES</u>	<u>ESTIMATED UNITS*</u>	<u>ADVERTISED PRICE</u>
Sawtimber		
Basswood	2.50 MBF	\$ 180.00 / MBF
Paper Birch	1.40 MBF	\$ 120.00 / MBF
Red Maple	17.20 MBF	\$ 203.00 / MBF
Sugar Maple	16.80 MBF	\$ 408.00 / MBF
White Ash	3.80 MBF	\$ 79.00 / MBF
Yellow Birch	0.90 MBF	\$ 150.00 / MBF
Pulpwood		
Balsam Fir	353.00 Cords	\$ 25.60 / Cord
Balsam Poplar	310.00 Cords	\$ 30.80 / Cord
Hemlock	183.00 Cords	\$ 15.00 / Cord
Mixed Hardwood	668.00 Cords	\$ 28.75 / Cord
Mixed Spruce	1,214.00 Cords	\$ 23.55 / Cord
N. White Cedar	81.00 Cords	\$ 26.65 / Cord
Quaking Aspen	479.00 Cords	\$ 30.80 / Cord
Red Pine	135.00 Cords	\$ 46.05 / Cord
Tamarack	970.00 Cords	\$ 24.00 / Cord
White Pine	273.00 Cords	\$ 23.30 / Cord

* The total volume is statistically estimated within plus (+) or minus (-) 10.70 percent. The estimated units are final and not subject to adjustment. Prospective bidders are urged to examine this timber and to make their own estimates of quantity and quality.

BOND AND PAYMENT SCHEDULE:

1. A bond in the amount of \$7,000.00 to insure faithful performance of the conditions of the contract will be deposited by the successful bidder within 21 days of the sale award.
2. Cutting in any sale or unit without the required advance payment would be considered a trespass.
3. Total payment must be paid in advance or according to the following schedule:
 - (a) Ten percent (10%) of the sale value must be paid within 21 days of the sale award.
 - (b) The 10% down payment will be credited towards the first unit cut.
4. If no cutting takes place, the 10% down payment will not be refunded.
5. Operations on the contract issued will terminate on 06/30/2019.

Description of Timber by Payment Unit (PU)

PU	MARKET GROUP	PRODUCT	QUANTITY	UNIT	ACRES	ADVERTISE PRICE
1	Red Pine	Pulpwood	35.0	Cords	1.2	\$1,658.35
	White Pine		2.0	Cords		
2	Balsam Fir	Pulpwood	3.0	Cords	64.8	\$16,929.05
	Mixed Hardwood		6.0	Cords		
	<i>Red Maple</i>		6.0	<i>Cords</i>		
	Mixed Spruce		321.0	Cords		
	<i>Black Spruce</i>		321.0	<i>Cords</i>		
	N. White Cedar		1.0	Cords		
	Red Pine		25.0	Cords		
	Tamarack		262.0	Cords		
	White Pine		71.0	Cords		
3	Balsam Fir	Pulpwood	4.0	Cords	82.3	\$21,600.90
	Mixed Hardwood		8.0	Cords		
	<i>Red Maple</i>		8.0	<i>Cords</i>		
	Mixed Spruce		409.0	Cords		
	<i>Black Spruce</i>		409.0	<i>Cords</i>		
	N. White Cedar		1.0	Cords		
	Red Pine		32.0	Cords		
	Tamarack		334.0	Cords		
	White Pine		91.0	Cords		
4	Balsam Fir	Pulpwood	3.0	Cords	55.7	\$14,581.40
	Mixed Hardwood		5.0	Cords		
	<i>Red Maple</i>		5.0	<i>Cords</i>		
	Mixed Spruce		276.0	Cords		
	<i>Black Spruce</i>		276.0	<i>Cords</i>		
	N. White Cedar		1.0	Cords		
	Red Pine		22.0	Cords		
	Tamarack		225.0	Cords		
	White Pine		61.0	Cords		
5	Balsam Fir	Pulpwood	2.0	Cords	36.8	\$9,602.90
	Mixed Hardwood		3.0	Cords		
	<i>Red Maple</i>		3.0	<i>Cords</i>		
	Mixed Spruce		182.0	Cords		
	<i>Black Spruce</i>		182.0	<i>Cords</i>		
	N. White Cedar		1.0	Cords		
	Red Pine		14.0	Cords		
	Tamarack		149.0	Cords		
	White Pine		40.0	Cords		
6	Basswood	Sawtimber	2.5	MBF	10.4	\$7,473.35
	Red Maple		1.6	MBF		
	Sugar Maple		5.3	MBF		
	White Ash		2.8	MBF		
	Yellow Birch		0.2	MBF		
	Balsam Fir	Pulpwood	27.0	Cords		
	Mixed Hardwood		125.0	Cords		
	<i>Basswood</i>		28.0	<i>Cords</i>		
	<i>Beech</i>		4.0	<i>Cords</i>		
	<i>Ironwood</i>		2.0	<i>Cords</i>		
	<i>Red Maple</i>		14.0	<i>Cords</i>		
	<i>Sugar Maple</i>		69.0	<i>Cords</i>		
	<i>White Ash</i>		7.0	<i>Cords</i>		
	<i>Yellow Birch</i>		1.0	<i>Cords</i>		
7	Paper Birch	Sawtimber	0.5	MBF	22.1	\$8,555.20
	Red Maple		8.6	MBF		
	Balsam Fir	Pulpwood	23.0	Cords		
	Hemlock		38.0	Cords		

Description of Timber by Payment Unit (PU), con't

PU	MARKET GROUP	PRODUCT	QUANTITY	UNIT	ACRES	ADVERTISE PRICE
	Mixed Hardwood		177.0	Cords		
	<i>Black Ash</i>		7.0	<i>Cords</i>		
	<i>Paper Birch</i>		10.0	<i>Cords</i>		
	<i>Red Maple</i>		129.0	<i>Cords</i>		
	<i>Yellow Birch</i>		31.0	<i>Cords</i>		
	Mixed Spruce		3.0	Cords		
	<i>White Spruce</i>		3.0	<i>Cords</i>		
	Quaking Aspen		14.0	Cords		
8	Red Maple	Sawtimber	4.1	MBF	5.6	\$7,870.25
	Sugar Maple		11.5	MBF		
	White Ash		0.1	MBF		
	Yellow Birch		0.7	MBF		
	Balsam Fir	Pulpwood	3.0	Cords		
	Mixed Hardwood		75.0	Cords		
	<i>Red Maple</i>		20.0	<i>Cords</i>		
	<i>Sugar Maple</i>		40.0	<i>Cords</i>		
	<i>White Ash</i>		1.0	<i>Cords</i>		
	<i>Yellow Birch</i>		14.0	<i>Cords</i>		
9	Paper Birch	Sawtimber	0.3	MBF	19.6	\$13,933.00
	Red Maple		0.3	MBF		
	White Ash		0.3	MBF		
	Balsam Fir	Pulpwood	99.0	Cords		
	Balsam Poplar		111.0	Cords		
	Mixed Hardwood		73.0	Cords		
	<i>Black Ash</i>		8.0	<i>Cords</i>		
	<i>Black Cherry</i>		2.0	<i>Cords</i>		
	<i>Paper Birch</i>		16.0	<i>Cords</i>		
	<i>Red Maple</i>		34.0	<i>Cords</i>		
	<i>White Ash</i>		12.0	<i>Cords</i>		
	<i>Yellow Birch</i>		1.0	<i>Cords</i>		
	Mixed Spruce		6.0	Cords		
	<i>Black Spruce</i>		2.0	<i>Cords</i>		
	<i>White Spruce</i>		4.0	<i>Cords</i>		
	N. White Cedar		19.0	Cords		
	Quaking Aspen		166.0	Cords		
10	Paper Birch	Sawtimber	0.6	MBF	35.2	\$25,093.40
	Red Maple		0.6	MBF		
	White Ash		0.6	MBF		
	Balsam Fir	Pulpwood	179.0	Cords		
	Balsam Poplar		199.0	Cords		
	Mixed Hardwood		131.0	Cords		
	<i>Black Ash</i>		15.0	<i>Cords</i>		
	<i>Black Cherry</i>		3.0	<i>Cords</i>		
	<i>Paper Birch</i>		28.0	<i>Cords</i>		
	<i>Red Maple</i>		62.0	<i>Cords</i>		
	<i>White Ash</i>		22.0	<i>Cords</i>		
	<i>Yellow Birch</i>		1.0	<i>Cords</i>		
	Mixed Spruce		11.0	Cords		
	<i>Black Spruce</i>		3.0	<i>Cords</i>		
	<i>White Spruce</i>		8.0	<i>Cords</i>		
	N. White Cedar		34.0	Cords		
	Quaking Aspen		299.0	Cords		
11	Red Maple	Sawtimber	2.0	MBF	17.1	\$3,100.15
	Balsam Fir	Pulpwood	10.0	Cords		
	Hemlock		19.0	Cords		
	Mixed Hardwood		57.0	Cords		

Description of Timber by Payment Unit (PU), con't

PU	MARKET GROUP	PRODUCT	QUANTITY	UNIT	ACRES	ADVERTISE PRICE
11 con't	<i>Black Ash</i>	<i>Pulpwood</i>	12.0	<i>Cords</i>		
	<i>Paper Birch</i>		2.0	<i>Cords</i>		
	<i>Red Maple</i>		33.0	<i>Cords</i>		
	<i>Yellow Birch</i>		10.0	<i>Cords</i>		
	Mixed Spruce		6.0	Cords		
	<i>Black Spruce</i>		6.0	<i>Cords</i>		
	N. White Cedar		14.0	Cords		
12	Hemlock	Pulpwood	126.0	Cords	5.9	\$2,895.25
	Mixed Hardwood		8.0	Cords		
	<i>Red Maple</i>		8.0	<i>Cords</i>		
	N. White Cedar		10.0	Cords		
	Red Pine		7.0	Cords		
	White Pine		8.0	Cords		
TOTAL:			42.6	MBF		
TOTAL:			6,548.0	Cords		

Sale Specific Conditions & Requirements

Sale Name: Makosky Split

Sale Number: 33-001-16 Seq#: 1

1 - Sale Area

1.2 - Boundaries

1.2.1 - Painted boundaries (1/14)

The sale boundary and Payment Unit boundaries are marked and identified by blue, red and yellow paint. Exterior sale boundary lines against private property are marked with blue paint. Exterior sale boundary lines against state are marked with red paint. Interior Payment Unit boundaries are marked with yellow paint. The painted boundary line trees are not Included Timber and are to be protected unless marked with orange paint. Yellow painted trees designating an interior Payment Unit boundary are only to be cut when all surrounding Payment Units have been paid.

2 - Timber Specifications

2.1 - Included Timber

2.1.1 - Clearcut unit(s) with unmerchantable trees (6/14)

Within Payment Unit(s) 9 and 10, cut all trees that are two (2) inches or more at DBH.

2.1.2 - Clearcut unit(s) w/o unmerchantable trees (8/11)

Within Payment Unit(s) 12, cut all trees which meet minimum piece specifications in 2.2 Utilization.

2.1.3 - Cut tree marked unit(s) (12/08)

Within Payment Unit(s) 1, 6, and 8, all trees are designated for cutting when marked with orange paint above and below stump height, regardless of merchantability. In addition, within Payment Unit 6, cut all merchantable spruce and fir trees. Within Payment Unit 8, trees which meet harvest exception 2.1.9 are allowed to be cut.

2.1.4 - Species designation unit(s) (12/08)

Within Payment Unit(s) 7 and 11, all trees are designated for cutting which meet minimum piece specifications in 2.2 - Utilization regardless of merchantability with the following exception: Within Payment Unit 7 and 11, do not cut any cedar, pine, and hemlock unless marked with orange paint.

2.1.7 - Leave tree marked unit(s) (6/14)

Within Payment Unit(s) 2, 3, 4, and 5, all trees, which meet minimum piece specifications in 2.2 Utilization, are designated for cutting except trees marked with green paint above and below stump height.

2.1.9 - Harvest exception (12/08)

Do not cut hemlock trees in Payment Unit 8 other than those that are necessary to remove in order to operate within the sale area. Every effort must be made to preserve the existing hemlock and to leave an intact stand upon sale completion. All cut hemlock shall be piled separately by products and scaled in the woods unless other scaling arrangements are agreed to by the Unit Manager or his/her representative. Stumpage price for hemlock shall be \$50.00 per cord.

3 - Payments

3.4 - Damaged Timber

3.4.1 - Damaged timber (6/14)

General Condition and Requirement 3.4 Damaged Timber, defines liquidated damages for undesignated live merchantable trees which are cut or injured. In addition, extreme care should be taken to avoid damage to tree seedlings and saplings.

Within Payment Units 7 and 11, if more than 30%, and within Payment Unit 12, if more than 50% of the tree seedlings or saplings (1/4" to 4.5" DBH) within a specified portion of the Payment Units are damaged, liquidated damages will be assessed at \$100 dollars per acre for all acreage within that specified portion of the Payment Unit that was damaged.

4 - Transportation

4.1 - Construction

4.1.7 - Road closure (10/11)

All new roads built into the sale must be blocked to vehicle traffic upon completion of the sale. In general, this will require constructing a four (4') foot high berm of stumps and logs covered with earth. Contact the sale administrator for specific details of design and placement.

4.2 - Maintenance

4.2.4 - Grading (12/14)

For completion of the sale, state forest roads must be graded. In general, this will require a road grader or bull dozer to shape up the roads after forest products have been hauled off site. The grading equipment to be used must be approved by the Unit Manager or his/her representative.

4.4 - Access

4.4.2 - Alternate route on private property (2/04)

It is the Purchaser's responsibility to obtain access across private land for any routes other than the route shown on the sale map.

5 - Operations

5.1 - Notification

5.1.1 - Pre-sale conference (10/11)

A pre-sale conference between the Purchaser and sale administrator is required prior to beginning any operations to determine landing and road locations. The Unit Manager or his/her representative must be contacted at least 5 days in advance to schedule the conference.

5.1.4 - Post-sale conference (6/11)

A post-sale conference on site between the Purchaser and sale administrator is required 5 days prior to the completion of active logging operations to determine clean-up and repair of landings, road edges, and the fulfillment of other contract specifications.

5.2 - Conduct of Operations

5.2.2 - Hazard Trees/Snags

5.2.2.1 - Den trees (2/04)

Obvious hollow and/or den trees shall be protected and left standing unless they are a safety hazard.

5.2.3 - Operating Restrictions

5.2.3.1 - Operating restrictions (9/11)

Within Payment Unit(s) 1, 2, 3, 4, and 5, unless changed by written agreement, cutting, skidding, and hauling are limited to the period of 12/1 to 03/31. This restriction is because the sale area and access is low and wet ground.

5.2.3.3 - Bark slippage restriction (3/09)

Within Payment Unit(s) 9 and 16, unless changed by written agreement, cutting and skidding are not permitted during the period of April 15 to July 15. This restriction is because of bark slippage.

5.2.22 - Operating Caution

5.2.22.1 - Operating caution (6/11)

It is recommended, but not required, that within Payment Unit(s) 12, cutting, skidding, and hauling occur during dry summer or frozen winter conditions. The reason for the recommendation is because an area of access to this unit is low and wet.

5.4 - Soil Protection

5.4.1 - Rutting restriction, general (1/09)

Operations are to cease immediately if equipment and weather conditions result in rutting of roads and skid trails which is 12 inches or greater in depth and 50 feet in length. The Unit Manager or his/her representative may restrict hauling and/or skidding if ruts exceed the specified depth. With the Unit Manager or his/her representative's approval, the Purchaser may return to the area when the risk of rutting has decreased.

6 - Safety and Fire Prevention

6.2 - Signing

6.2.1 - Road posting (9/09)

The Purchaser is responsible for posting and maintaining caution signs on the Makosky Road prior to beginning operations. The road must be posted at appropriate distances from the sale area to warn of logging activity and truck traffic. Signs must be removed when harvest operations are suspended or completed. The Purchaser will provide these signs.

7 - Other Conditions

7.3 - Contract Modifications

7.3.1 - Emerald Ash Borer

7.3.1.2 - Emerald ash borer, ash or firewood on sale (2/05)

There is ash and/or "firewood" in this sale and it is located within an emerald ash borer quarantined area. The Director of the Michigan Department of Agriculture (MDA) by the authority of Act No. 72 of the Public Acts of 1945, as amended, and Quarantine Regulation No. 620, has promulgated this quarantine to prevent the further spread of this pest and sets forth: definitions, regulated articles, regulated areas, conditions of movement, violations and penalties, and special exemptions. The Purchaser must comply with this quarantine. Contact the MDA for further information.



TIMBER SALE MAP

This information provided by authority of Part 525, 1994 PA 451, as amended.

Sale Number	Year
33-001-16-01	16

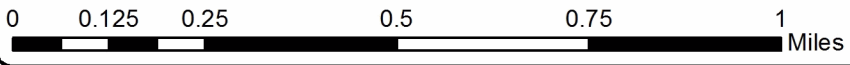
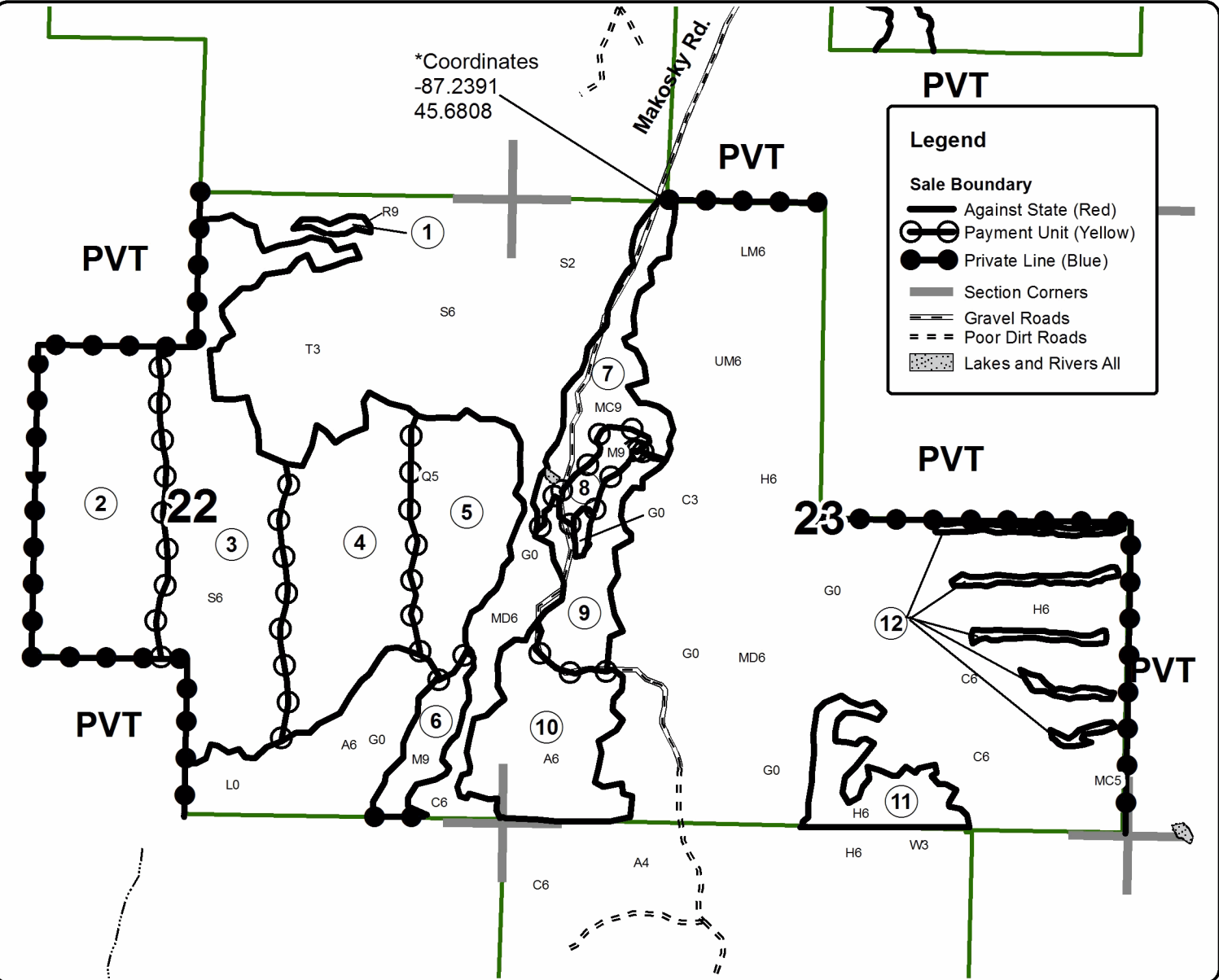
Forest Management Unit	County	Mapped By	Date	Page	of
Escanaba	Delta	Racine	05/23/2016	1	1
Township		Range		Section(s) and Subdivision(s)	
38N		24W		22)NESW,SENW,NE1/4,SE1/4 23)NWSW,SWSW,SESW,NW1/4,SE1/4	

Cruised By	Scale
Mcnamee, Racine	1:15,840

Cover Type				Density			
A = Aspen	H = Hemlock	N = Marsh	U = Upland Brush	0 = Non Stocked	5 = Pole Timber Medium		
B = Paper Birch	J = Jack Pine	O = Oak	UM = Upland Mixed	1 = Seedling Sapling Poor	6 = Pole Timber Well		
C = Cedar	L = Lowland Brush	P = Lowland Poplar	V = Bog or Marsh	2 = Seedling Sapling Medium	7 = Saw Timber Poor		
D = Treed Bog	LM = Lowland Mixed	Q = Mixed Swamp Conifer	W = White Pine	3 = Seedling Sapling Well	8 = Saw Timber Medium		
E = Swamp Hdwoods	M = Mpl, Bch, Brch	R = Red Pine	X = Non Stocked	4 = Pole Timber Poor	9 = Saw Timber Well		
F = Spruce Fir	MC = Mixed Conifer	S = Black Spruce	Z = Water				
G = Grass	MD = Mixed Deciduous	T = Tamarack					

PU	Acres	PU	Acres	PU	Acres
1	1.2	5	36.8	9	19.6
2	64.8	6	10.4	10	35.2
3	82.3	7	22.1	11	17.1
4	55.7	8	5.6	12	5.9

Makosky Split
 Compartment 082
 356.7 Acres



TIMBER SALE INFORMATION

C-34 East (33-006-16)

Menominee County (Advertised Price \$6,981.65)

SALE NOTE: A recreation site such as a trail, pathway, or campground is within the sale area or the vicinity. Certain restrictions/specifications may be applicable including time restrictions.

A timber sale contract for this lump sum, sealed bid timber sale will be awarded to the responsible bidder offering the highest sealed bid price. Bids must be at or above the following advertised price for each species:

<u>PRODUCTS & SPECIES</u>	<u>ESTIMATED UNITS*</u>	<u>ADVERTISED PRICE</u>
Sawtimber		
Beech	0.90 MBF	\$ 93.00 / MBF
Red Maple	6.20 MBF	\$ 288.00 / MBF
Yellow Birch	1.40 MBF	\$ 258.00 / MBF
Pulpwood		
Hemlock	1.00 Cords	\$ 21.25 / Cord
Mixed Hardwood	113.00 Cords	\$ 40.70 / Cord
Quaking Aspen	3.00 Cords	\$ 43.60 / Cord

* The total volume is statistically estimated within plus (+) or minus (-) 32.73 percent. The estimated units are final and not subject to adjustment. Prospective bidders are urged to examine this timber and to make their own estimates of quantity and quality.

BOND AND PAYMENT SCHEDULE:

1. A bond in the amount of \$500.00 to insure faithful performance of the conditions of the contract will be deposited by the successful bidder within 21 days of the sale award.
2. Cutting in any sale or unit without the required advance payment would be considered a trespass.
3. Total payment must be paid in advance or according to the following schedule:
 - (a) Ten percent (10%) of the sale value must be paid within 21 days of the sale award.
 - (b) The 10% down payment will be credited towards the first unit cut.
4. If no cutting takes place, the 10% down payment will not be refunded.
5. Operations on the contract issued will terminate on 03/31/2019.

Description of Timber by Payment Unit (PU)

PU	MARKET GROUP	PRODUCT	QUANTITY	UNIT	ACRES	ADVERTISE PRICE
1	Beech	Sawtimber	0.9	MBF	14.9	\$6,028.75
	Red Maple		4.9	MBF		
	Yellow Birch		1.4	MBF		
	Hemlock	Pulpwood	1.0	Cords		
	Mixed Hardwood		102.0	Cords		
	<i>Beech</i>		7.0	<i>Cords</i>		
	<i>Green Ash</i>		3.0	<i>Cords</i>		
	<i>Red Maple</i>		74.0	<i>Cords</i>		
	<i>Yellow Birch</i>		18.0	<i>Cords</i>		
	2		Red Maple	Sawtimber		
Mixed Hardwood	Pulpwood	11.0	Cords			
<i>Red Maple</i>		6.0	<i>Cords</i>			
<i>Sugar Maple</i>		5.0	<i>Cords</i>			
Quaking Aspen		3.0	Cords			
TOTAL:			8.5	MBF		
TOTAL:			230.0	Cords		

Sale Specific Conditions & Requirements

Sale Name: C-34 East

Sale Number: 33-006-16 Seq#: 1

1 - Sale Area

1.2 - Boundaries

1.2.1 - Painted boundaries (1/14)

The sale boundary and Payment Unit boundaries are marked and identified by blue, red and yellow paint. Exterior sale boundary lines against private property are marked with blue paint. Exterior sale boundary lines against state are marked with red paint. Interior Payment Unit boundaries are marked with yellow paint. The painted boundary line trees are not Included Timber and are to be protected unless marked with orange paint. Yellow painted trees designating an interior Payment Unit boundary are only to be cut when all surrounding Payment Units have been paid.

2 - Timber Specifications

2.1 - Included Timber

2.1.3 - Cut tree marked unit(s) (12/08)

Within Payment Unit(s) 1 & 2, all trees are designated for cutting when marked with orange paint above and below stump height, regardless of merchantability. Within Payment Unit 2, cut all aspen which meet minimum piece specifications in 2.2 Utilization.

2.2 - Utilization

2.2.4 - Skidding length (2/14)

Skidding of unlimbed tops or lengths over 17 feet is not permissible, unless approved by the Unit Manager or his/her representative.

4 - Transportation

4.1 - Construction

4.1.6 - Road construction (1/09)

Construction of new roads or improvements of existing roads shall be done in such a way as to minimize the environmental and visual impacts. Merchantable trees shall be cut and utilized unless otherwise directed. Non-merchantable trees shall be severed and laid flat on the ground. Slash shall be scattered, and not left in windrows and kept a minimum of 5 feet back from the road edge. Stumps shall be set upright, not left on edge, and be moved at least 5 feet away from the road edge. Disturbed soil shall be feathered into the woods and not left in berms or windrows.

4.1.12 - No new roads (1/12)

No new roads will be permitted in any Payment Unit.

5 - Operations

5.1 - Notification

5.1.1 - Pre-sale conference (10/11)

A pre-sale conference on site between the Purchaser and sale administrator is required prior to beginning any operations a Payment Unit to determine landing and road locations. The Unit Manager or his/her representative must be contacted at least 5 days in advance to schedule the conference.

5.1.4 - Post-sale conference (6/11)

A post-sale conference on site between the Purchaser and sale administrator is required 5 days prior to the completion of active logging operations to determine clean-up and repair of landings, road edges, and the fulfillment of other contract specifications.

5.2 - Conduct of Operations

5.2.1 - Slash

5.2.1.1 - Slash within sale area (2/04)

No trees are to be felled outside the sale area and all slash is to be kept at least 5 feet back from the blue paint line.

5.2.1.8 - Slash height (12/08)

No slash or tree tops may exceed 24 inches in height.

5.2.1.10 - No slash in openings (5/10)

No brush or logging debris is to be left in the maintained wildlife opening which is indicated by G0 on the Timber Sale Map. Any damage to the opening shall be repaired according to specifications of the Unit Manager or his/her representative.

5.2.2 - Hazard Trees/Snags

5.2.2.1 - Den trees (2/04)

Obvious hollow and/or den trees shall be protected and left standing unless they are a safety hazard.

5.2.3 - Operating Restrictions

5.2.3.3 - Bark slippage restriction (3/09)

Within Payment Unit(s) 1 & 2, unless changed by written agreement, cutting and skidding are not permitted during the period of April 15 to July 15. This restriction is because of bark slippage.

5.2.3.9 - Beech hauling restriction (3/11)

American beech wood products with bark still attached, other than chips, are not to be transported from stands infested with beech scale to or through uninfested beech areas the lower peninsula or to Wisconsin from July 15 to November 15. Beech scale is mobile at this time of year and can move from infested wood to live beech. (See Map of current beech scale distribution on the DNR Forest Health Website, www.michigan.gov/dnr.)

5.4 - Soil Protection

5.4.1 - Rutting restriction, general (1/09)

Operations are to cease immediately if equipment and weather conditions result in rutting of roads and skid trails which is 12 inches or greater in depth and 50 feet in length. The Unit Manager or his/her representative may restrict hauling and/or skidding if ruts exceed the specified depth. With the Unit Manager or his/her representative's approval, the Purchaser may return to the area when the risk of rutting has decreased.



TIMBER SALE MAP

This information provided by authority of Part 525, 1994 PA 451, as amended.

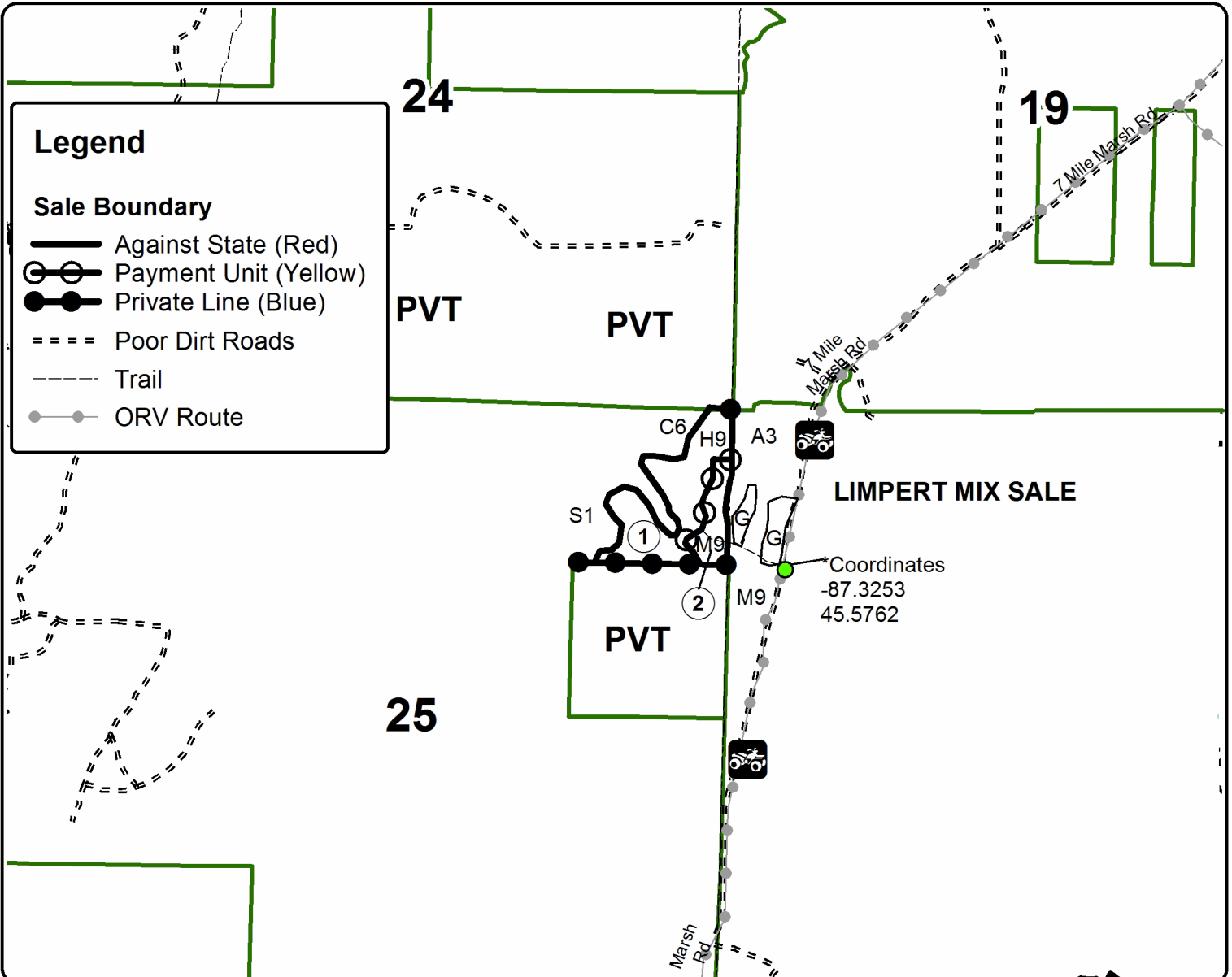
Forest Management Unit Escanaba		County Menominee	Mapped By Racine		Date 05/26/2016	Page 1	of 1
Township 37N	Range 25W	Section(s) and Subdivision(s) 25) NENE			Scale 1:15,840		
Cover Type				Density			
A = Aspen	H = Hemlock	N = Marsh	U = Upland Brush	0 = Non Stocked	5 = Pole Timber Medium		
B = Paper Birch	J = Jack Pine	O = Oak	UM = Upland Mixed	1 = Seedling Sapling Poor	6 = Pole Timber Well		
C = Cedar	L = Lowland Brush	P = Lowland Poplar	V = Bog or Marsh	2 = Seedling Sapling Medium	7 = Saw Timber Poor		
D = Tread Bog	LM = Lowland Mixed	Q = Mixed Swamp Conifer	W = White Pine	3 = Seedling Sapling Well	8 = Saw Timber Medium		
E = Swamp Hdwoods	M = Mpl, Bch, Brch	R = Red Pine	X = Non Stocked	4 = Pole Timber Poor	9 = Saw Timber Well		
F = Spruce Fir	MC = Mixed Conifer	S = Black Spruce	Z = Water				
G = Grass	MD = Mixed Deciduous	T = Tamarack					

PU	Acres
1	14.9
2	4.3

C-34 East

Compartment 34

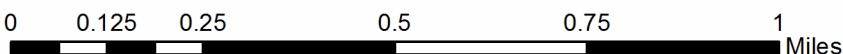
19.2 Acres



Legend

Sale Boundary

- Against State (Red)
- Payment Unit (Yellow)
- Private Line (Blue)
- ==== Poor Dirt Roads
- Trail
- ORV Route



TIMBER SALE INFORMATION

Hayward Lake 'ELB' (33-028-16)

Menominee County (Advertised Price \$126,249.70)

SALE NOTE: Within the sale area and adjacent to it, is the Hayward Lake access site and parking area. The DNR has an easement for the access road that leads to the access site. The parking area, access site, and access road needs to be in good condition at all times and accessible for the public. The Eastern Larch Beetle is present and has caused some tamarack mortality, but at this time there has been a very minor loss of wood products. Access into payment unit 1 will be through private property, they have given tentative permission for a contractor to use their roads. Written permission will be required.

A recreation site such as a trail, pathway, or campground is within the sale area or the vicinity. Certain restrictions/specifications may be applicable including time restrictions.

A timber sale contract for this lump sum, sealed bid timber sale will be awarded to the responsible bidder offering the highest sealed bid price. Bids must be at or above the following advertised price for each species:

<u>PRODUCTS & SPECIES</u>	<u>ESTIMATED UNITS*</u>		<u>ADVERTISED PRICE</u>
Sawtimber			
Basswood	12.70	MBF	\$ 210.00 / MBF
Beech	1.50	MBF	\$ 77.00 / MBF
Paper Birch	5.30	MBF	\$ 84.00 / MBF
Red Maple	8.00	MBF	\$ 237.00 / MBF
Sugar Maple	19.70	MBF	\$ 476.00 / MBF
White Pine	1.40	MBF	\$ 70.00 / MBF
Yellow Birch	1.60	MBF	\$ 84.00 / MBF
Pulpwood			
Balsam Fir	136.00	Cords	\$ 29.90 / Cord
Black Spruce	336.00	Cords	\$ 27.45 / Cord
Hemlock	77.00	Cords	\$ 14.00 / Cord
Mixed Hardwood	610.00	Cords	\$ 33.55 / Cord
N. White Cedar	1,517.00	Cords	\$ 31.05 / Cord
Quaking Aspen	42.00	Cords	\$ 35.90 / Cord
Tamarack	1,744.00	Cords	\$ 16.05 / Cord
White Pine	3.00	Cords	\$ 27.15 / Cord

* The total volume is statistically estimated within plus (+) or minus (-) 7.54 percent. The estimated units are final and not subject to adjustment. Prospective bidders are urged to examine this timber and to make their own estimates of quantity and quality.

BOND AND PAYMENT SCHEDULE:

1. A bond in the amount of \$6,312.00 to insure faithful performance of the conditions of the contract will be deposited by the successful bidder within 21 days of the sale award.
2. Cutting in any sale or unit without the required advance payment would be considered a trespass.
3. Total payment must be paid in advance or according to the following schedule:
 - (a) Ten percent (10%) of the sale value must be paid within 21 days of the sale award.
 - (b) The 10% down payment will be credited towards the first unit cut.
4. If no cutting takes place, the 10% down payment will not be refunded.
5. Operations on the contract issued will terminate on 06/01/2019.

Description of Timber by Payment Unit (PU), con't

PU	MARKET GROUP	PRODUCT	QUANTITY	UNIT	ACRES	ADVERTISE PRICE
	<i>Paper Birch</i>		20.0	<i>Cords</i>		
	<i>Red Maple</i>		3.0	<i>Cords</i>		
	<i>Sugar Maple</i>		22.0	<i>Cords</i>		
	<i>Yellow Birch</i>		26.0	<i>Cords</i>		
	N. White Cedar		100.0	Cords		
8	Basswood	Sawtimber	7.3	MBF	7.9	\$7,614.95
	Beech		0.7	MBF		
	Paper Birch		0.7	MBF		
	Red Maple		0.7	MBF		
	Sugar Maple		4.8	MBF		
	Hemlock	Pulpwood	10.0	Cords		
	Mixed Hardwood		97.0	Cords		
	<i>Balsam Poplar</i>		5.0	<i>Cords</i>		
	<i>Basswood</i>		16.0	<i>Cords</i>		
	<i>Beech</i>		9.0	<i>Cords</i>		
	<i>Paper Birch</i>		4.0	<i>Cords</i>		
	<i>Red Maple</i>		20.0	<i>Cords</i>		
	<i>Sugar Maple</i>		36.0	<i>Cords</i>		
	<i>Yellow Birch</i>		7.0	<i>Cords</i>		
	N. White Cedar		4.0	Cords		
9	Basswood	Sawtimber	0.8	MBF	25.8	\$23,636.45
	Sugar Maple		5.4	MBF		
	White Pine		1.4	MBF		
	Balsam Fir	Pulpwood	46.0	Cords		
	Black Spruce		163.0	Cords		
	Hemlock		3.0	Cords		
	Mixed Hardwood		76.0	Cords		
	<i>Balsam Poplar</i>		20.0	<i>Cords</i>		
	<i>Basswood</i>		4.0	<i>Cords</i>		
	<i>Beech</i>		1.0	<i>Cords</i>		
	<i>Black Ash</i>		1.0	<i>Cords</i>		
	<i>Ironwood</i>		2.0	<i>Cords</i>		
	<i>Paper Birch</i>		7.0	<i>Cords</i>		
	<i>Sugar Maple</i>		35.0	<i>Cords</i>		
	<i>Yellow Birch</i>		6.0	<i>Cords</i>		
	N. White Cedar		265.0	Cords		
	Quaking Aspen		18.0	Cords		
	Tamarack		212.0	Cords		
	White Pine		3.0	Cords		
10	Balsam Fir	Pulpwood	79.0	Cords	25.0	\$23,106.10
	Black Spruce		79.0	Cords		
	Hemlock		2.0	Cords		
	Mixed Hardwood		22.0	Cords		
	<i>Balsam Poplar</i>		6.0	<i>Cords</i>		
	<i>Black Ash</i>		10.0	<i>Cords</i>		
	<i>Red Maple</i>		1.0	<i>Cords</i>		
	<i>Sugar Maple</i>		3.0	<i>Cords</i>		
	<i>Yellow Birch</i>		2.0	<i>Cords</i>		
	N. White Cedar		392.0	Cords		
	Quaking Aspen		18.0	Cords		
	Tamarack		311.0	Cords		
11	Basswood	Sawtimber	0.9	MBF	7.9	\$3,477.95
	Red Maple		0.7	MBF		
	Sugar Maple		1.9	MBF		
	Balsam Fir	Pulpwood	8.0	Cords		
	Mixed Hardwood		59.0	Cords		

Description of Timber by Payment Unit (PU), con't

PU	MARKET GROUP	PRODUCT	QUANTITY	UNIT	ACRES	ADVERTISE PRICE
11 con't	<i>Balsam Poplar</i>	<i>Pulpwood</i>	2.0	<i>Cords</i>		
	<i>Basswood</i>		4.0	<i>Cords</i>		
	<i>Red Maple</i>		2.0	<i>Cords</i>		
	<i>Sugar Maple</i>		51.0	<i>Cords</i>		
TOTAL:			50.2	MBF		
TOTAL:			5,075.0	Cords		

Sale Specific Conditions & Requirements

Sale Name: Hayward Lake 'ELB'

Sale Number: 33-028-16 Seq#: 1

1 - Sale Area

1.2 - Boundaries

1.2.1 - Painted boundaries (1/14)

The sale boundary and Payment Unit boundaries are marked and identified by blue, red and yellow paint. Exterior sale boundary lines against private property are marked with blue paint. Exterior sale boundary lines against state are marked with red paint. Interior Payment Unit boundaries are marked with yellow paint. Yellow painted trees designating an interior Payment Unit boundary are only to be cut when all surrounding Payment Units have been paid.

2 - Timber Specifications

2.1 - Included Timber

2.1.1 - Clearcut unit(s) with unmerchantable trees (6/14)

Within Payment Unit(s) 2, 3, 4, and 5, cut all trees that are three (3) inches or more at DBH; except within Payment Unit 3 do not cut trees marked with green paint. Also, there are two retention patches within Payment Unit 3. These patches are bounded by a red paint line and need to be protected. No harvesting activities may occur within these areas.

Within Payment Units 6, 7, 9, and 10, cut all trees greater than four (4) inches at DBH; except trees marked with green paint.

2.1.3 - Cut tree marked unit(s) (12/08)

Within Payment Unit(s) 1, 8, and 11, all trees are designated for cutting when marked with orange paint above and below stump height, regardless of merchantability.

2.1.16 - Timber along county or forest roads (6/14)

Cut and remove all standing trees 3" DBH or greater within 25 feet of the edge of the portion of the Hayward Lake Access Road that is within the DNR owned lands, up to the access site. The wood that is not included within a payment unit must be decked separately by species and products and scaled by the sale administrator. The wood will be paid for at the contract rates.

2.2 - Utilization

2.2.4 - Skidding length (2/14)

Skidding of unlimbed tops or lengths over 17 feet is not permissible within Payment Units 1, 8, and 11, unless approved by the Unit Manager or his/her representative.

3 - Payments

3.3 - Pre-measured Sales

3.3.4 - Dividing payment units (7/14)

Payment Unit(s) \$18,000 in value or greater may be divided at the request of the Purchaser and upon approval of the Unit Manager. Dividing Payment Units is a contract modification which requires a Timber Sale Contract Supplement. There will be only one division per Payment Unit.

4 - Transportation

4.1 - Construction

4.1.8 - Road work (1) (8/07)

The following road work is required: 40 yards of gravel will need to be hauled and spread by the contractor on the access road leading back to Payment Units 2 and 3. All roadwork must be completed prior to harvesting Payment Units 2 and 3.

4.2 - Maintenance

4.2.1 - Hauling restriction (12/08)

Hauling may be restricted on forest roads by the Unit Manager or his/her representative. The restriction may occur during

spring breakup or during other wet weather conditions.

4.2.4 - Grading (12/14)

For completion of the sale, state forest roads must be graded. In general, this will require a road grader or bull dozer to shape up the roads after forest products have been hauled off site. This includes cleaning of drainage areas, grading, crowning and filling with gravel, if necessary. The grading equipment to be used must be approved by the Unit Manager or his/her representative.

4.4 - Access

4.4.1 - Private property access (3/11)

Permission for access across private land into Payment Unit 1, is the responsibility of the Purchaser. The DNR has spoken with the landowner and they have given tentative permission for a contractor to access Payment Unit 1, but it is the contractors responsibility to obtain written permission. A copy of the written permission from the private landowner must be given to the Unit Manager within 30 days of the bid opening and prior to the beginning of operations.

5 - Operations

5.2 - Conduct of Operations

5.2.1 - Slash

5.2.1.2 - Slash Removal

5.2.1.2.1 - Slash removal, right-of-way (12/04)

All slash must be removed at least 10 feet from the cleared right-of-way of forest roads.

5.2.3 - Operating Restrictions

5.2.3.1 - Operating restrictions (9/11)

Within Payment Unit(s) 2, 3, 4, 5, 6, 9, and 10 cutting and skidding are limited to the period of December 1st to March 31st, unless there is an extended dry or frozen period and the sale administrator approves of harvesting during that time period. This restriction is because of low wet ground throughout the units.

5.2.3.3 - Bark slippage restriction (3/09)

Within Payment Unit(s) 1, 8, and 11, cutting and skidding are not permitted during the period of April 15 to July 15. This restriction is because of bark slippage.

5.2.37 - No decking areas (12/08)

No decking is allowed within 50 feet of the Hayward Lake Road without permission from the Menominee County Road Commission.

In addition, no decking will be allowed along the Hayward Lake Access Road or the parking lot.

5.4 - Soil Protection

5.4.1 - Rutting restriction, general (1/09)

Operations are to cease immediately if equipment and weather conditions result in rutting of roads and skid trails which is 12 inches or greater in depth and 50 feet in length. The Unit Manager or his/her representative may restrict hauling and/or skidding if ruts exceed the specified depth. With the Unit Manager or his/her representative's approval, the Purchaser may return to the area when the risk of rutting has decreased.

6 - Safety and Fire Prevention

6.2 - Signing

6.2.1 - Road posting (9/09)

The Purchaser is responsible for posting and maintaining caution signs on the Hayward Lake Road and the Hayward Lake Access Road prior to beginning operations. The road must be posted at appropriate distances from the sale area to warn of logging activity and truck traffic. Signs must be removed when harvest operations are suspended or completed. The Purchaser will provide these signs.

7 - Other Conditions

7.5 - Loss

7.5.1 - Deteriorating timber (7/09)

The sale area has received damage from the Eastern Larch Beetle, with some mortality occurring. The Purchaser should harvest the wood as soon as possible. The Department of Natural Resources is held free of responsibility of any further damage or deterioration due to delay in harvesting.



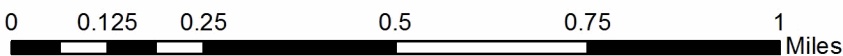
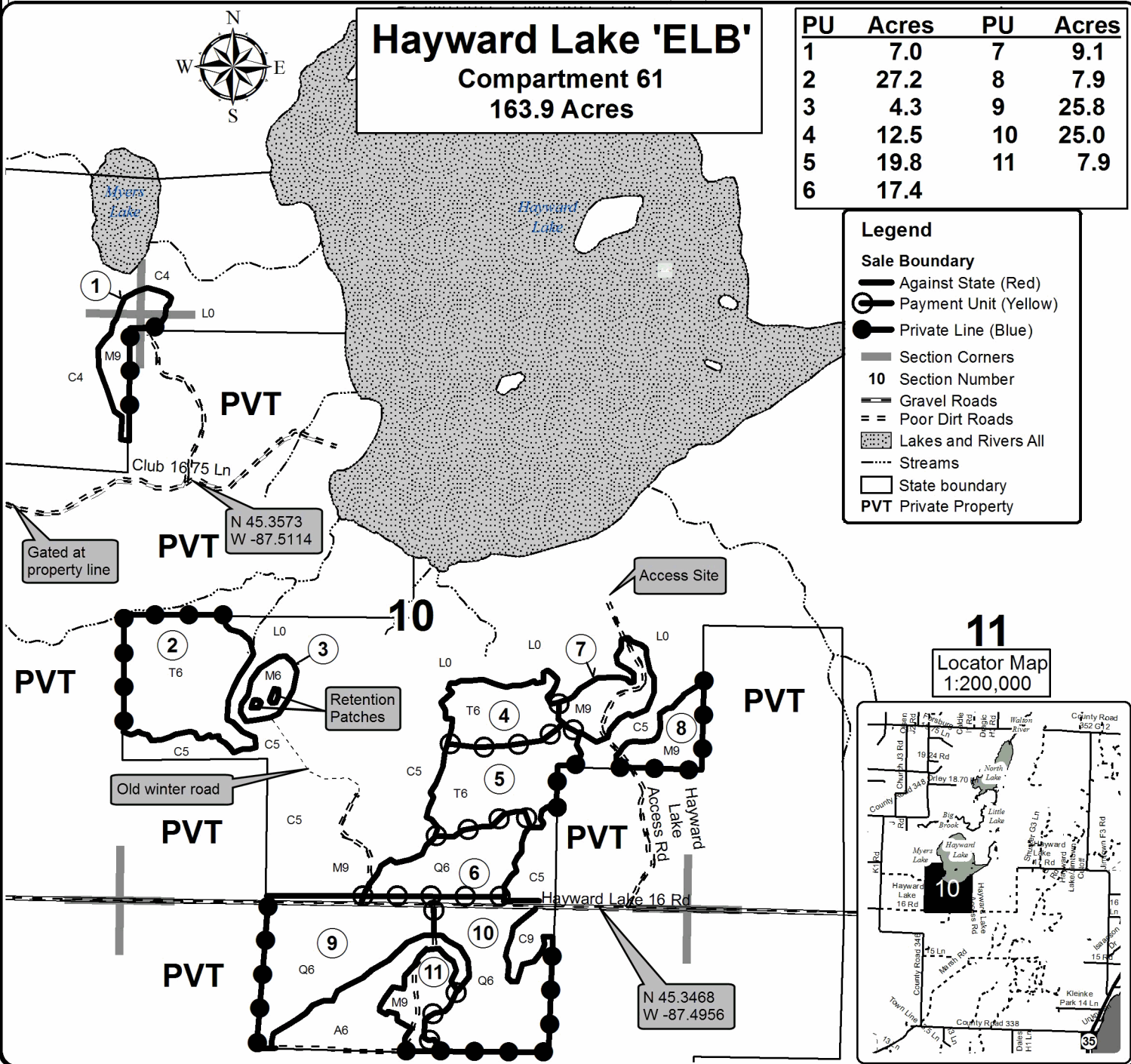
TIMBER SALE MAP

This information provided by authority of Part 525, 1994 PA 451, as amended.

Sale Number	Year
33-028	16

Forest Management Unit	County	Mapped By	Date	Page	of
Escanaba Management Unit	Menominee County	Beaudou	5/20/2016	1	1
Township	Range	Section(s) and Subdivision(s)	Scale		
34N	26W	Sec 3 - SWSW; Sec 4 - SESE; Sec 9 - NENE; Sec 10 - NESE, NESW, NWSE, NWSW, SESW & SWSE; Sec 15 - NENW & NWNE	1:15,840		

Cover Type				Density			
A = Aspen	H = Hemlock	N = Marsh	U = Upland Brush	0 = Non Stocked	5 = Pole Timber Medium		
B = Paper Birch	J = Jack Pine	O = Oak	UM = Upland Mixed	1 = Seedling Sapling Poor	6 = Pole Timber Well		
C = Cedar	L = Lowland Brush	P = Lowland Poplar	V = Bog or Marsh	2 = Seedling Sapling Medium	7 = Saw Timber Poor		
D = Tread Bog	LM = Lowland Mixed	Q = Mixed Swamp Conifer	W = White Pine	3 = Seedling Sapling Well	8 = Saw Timber Medium		
E = Swamp Hdwoods	M = Mpl, Bch, Brch	R = Red Pine	X = Non Stocked	4 = Pole Timber Poor	9 = Saw Timber Well		
F = Spruce Fir	MC = Mixed Conifer	S = Black Spruce	Z = Water				
G = Grass	MD = Mixed Deciduous	T = Tamarack					



Makosky Split (33-001-16)
 ; Delta COUNTY

In response to the notice of sale to be held 3:00 p.m. (local time) on September 7, 2016, I am hereby submitting my sealed bid (firm offer) for the following forest products to be cut. Bids for individual species must be at or above the advertised price. All non-responsive bid forms may be rejected.

<u>PRODUCTS & SPECIES</u>	<u>ESTIMATED VOLUME*</u>	<u>ADVERTISED PRICE</u>	<u>BID PRICE</u>
Sawtimber			
Basswood	2.50 MBF	\$ 180.00/MBF	\$ _____
Paper Birch	1.40 MBF	\$ 120.00/MBF	\$ _____
Red Maple	17.20 MBF	\$ 203.00/MBF	\$ _____
Sugar Maple	16.80 MBF	\$ 408.00/MBF	\$ _____
White Ash	3.80 MBF	\$ 79.00/MBF	\$ _____
Yellow Birch	0.90 MBF	\$ 150.00/MBF	\$ _____
Pulpwood			
Balsam Fir	353.00 Cords	\$ 25.60/Cord	\$ _____
Balsam Poplar	310.00 Cords	\$ 30.80/Cord	\$ _____
Hemlock	183.00 Cords	\$ 15.00/Cord	\$ _____
Mixed Hardwood	668.00 Cords	\$ 28.75/Cord	\$ _____
Mixed Spruce	1,214.00 Cords	\$ 23.55/Cord	\$ _____
N. White Cedar	81.00 Cords	\$ 26.65/Cord	\$ _____
Quaking Aspen	479.00 Cords	\$ 30.80/Cord	\$ _____
Red Pine	135.00 Cords	\$ 46.05/Cord	\$ _____
Tamarack	970.00 Cords	\$ 24.00/Cord	\$ _____
White Pine	273.00 Cords	\$ 23.30/Cord	\$ _____

*The volumes are statistically estimated within plus (+) or minus (-) 10.70 percent. These estimated volumes are final and not subject to adjustment. Prospective bidders are urged to examine this timber and to make their own estimates of quantity and quality.

I understand that any or all bids may be rejected. All bids must be signed and all bid items must be bid or the bid form may be rejected. I also understand that consideration and awarding a contract will be based upon my past performance and ability to complete the contract based upon equipment and staffing subject to my control.

FEDERAL ID: ____ - ____ - ____ or SOCIAL SECURITY NUMBER: ____ - ____ - ____

Company or individual bidding: _____

Company representative's name: _____

Address: _____

City: _____ State: _____ Zip: _____

IF AVAILABLE, PLEASE PLACE THE PERSONALIZED LABEL FROM YOUR PROSPECTUS IN THE ABOVE BOX.

Individual or company representative's signature: _____ Date: _____

Phone number : _____ Email (optional): _____

THE WINNING BIDDER MUST COMPLETE THE VERIFICATION OF WORKER'S DISABILITY COMPENSATION ACT COMPLIANCE (ON REVERSE SIDE IF DOUBLE SIDED) WITHIN 21 DAYS OF SALE AWARD DATE



FOR DEPARTMENT USE ONLY
Sale Number (XX – XXX – XX – XX)
Forest Management Unit:

TIMBER SALE VERIFICATION OF WORKER'S DISABILITY COMPENSATION ACT COMPLIANCE

*As required by Act 317, P.A. 1969 (Worker's Compensation) and
Part 5 of Act 451 of 1994, as amended.*

VERIFICATION OF WORKER'S DISABILITY COMPENSATION ACT COMPLIANCE

- This verification must be completed and submitted within 21 days of contract award and prior to the issuance of the timber sale contract.
- In addition, if boxes 2B or 2C are checked, then Notice of Exclusion or Certificate of Insurance must be submitted within twenty-one (21) days of the contract award and prior to the issuance of the timber sale contract.
- All information must be typed or printed except for written signatures.

Please Check Appropriate Categories:

1. My business is organized as (you **must** check one of the boxes below):
 - A. Sole Proprietorship (individual)
 - B. Partnership
 - C. Corporation
2. You **must** check one of the boxes below:
 - A. I certify my business is a sole proprietorship and it has no employees but the sole proprietor. I am not subject to the Worker's Compensation Laws.
 - B. I certify my business has satisfied its obligation to the Worker's Compensation Act through the use of an approved Notice of Exclusion (BWC-337, Rev. 5/96). I will provide a copy of the Notice of Exclusion within 21 days of the contract award. (For questions or a copy of the BWC-337, please call the Worker's Compensation Bureau at 517-322-1195).
 - C. I certify my business has a Worker's Compensation Policy. I will provide an original Certificate of Insurance within twenty-one (21) days of the contract award.
3. If you have checked item 2(A) or 2(B), you **must** indicate the number of **both** full-time and part-time employees, other than yourself, including family members and active partners (if none, you must enter "0").

_____ Full-time Employees

_____ Part-time Employees

Name of Business		Federal ID (or) Social Security No.	
Address		Telephone ()	
City	State	ZIP	

I hereby certify that the above information is true and correct. I agree to notify the Michigan DNR of any changes that occur in factors affecting my coverage during any of my present and future operations.

Signature of Owner or Authorized Representative

Title

Date

Please complete the "SEALED BID" information on the next page

C-34 East (33-006-16)
; Menominee COUNTY

In response to the notice of sale to be held 3:00 p.m. (local time) on September 7, 2016, I am hereby submitting my sealed bid (firm offer) for the following forest products to be cut. Bids for individual species must be at or above the advertised price. All non-responsive bid forms may be rejected.

<u>PRODUCTS & SPECIES</u>	<u>ESTIMATED VOLUME*</u>	<u>ADVERTISED PRICE</u>	<u>BID PRICE</u>
Sawtimber			
Beech	0.90 MBF	\$ 93.00/MBF	\$ _____
Red Maple	6.20 MBF	\$ 288.00/MBF	\$ _____
Yellow Birch	1.40 MBF	\$ 258.00/MBF	\$ _____
Pulpwood			
Hemlock	1.00 Cords	\$ 21.25/Cord	\$ _____
Mixed Hardwood	113.00 Cords	\$ 40.70/Cord	\$ _____
Quaking Aspen	3.00 Cords	\$ 43.60/Cord	\$ _____

*The volumes are statistically estimated within plus (+) or minus (-) 32.73 percent. These estimated volumes are final and not subject to adjustment. Prospective bidders are urged to examine this timber and to make their own estimates of quantity and quality.

I understand that any or all bids may be rejected. All bids must be signed and all bid items must be bid or the bid form may be rejected. I also understand that consideration and awarding a contract will be based upon my past performance and ability to complete the contract based upon equipment and staffing subject to my control.

FEDERAL ID: _____ or SOCIAL SECURITY NUMBER: _____

Company or individual bidding: _____

Company representative's name: _____

Address: _____

City: _____ State: _____ Zip: _____

IF AVAILABLE, PLEASE PLACE THE PERSONALIZED LABEL FROM YOUR PROSPECTUS IN THE ABOVE BOX.

Individual or company representative's signature: _____ Date: _____

Phone number : _____ Email (optional): _____

THE WINNING BIDDER MUST COMPLETE THE VERIFICATION OF WORKER'S DISABILITY COMPENSATION ACT COMPLIANCE (ON REVERSE SIDE IF DOUBLE SIDED) WITHIN 21 DAYS OF SALE AWARD DATE



FOR DEPARTMENT USE ONLY
Sale Number (XX - XXX - XX - XX)
Forest Management Unit:

TIMBER SALE VERIFICATION OF WORKER'S DISABILITY COMPENSATION ACT COMPLIANCE

*As required by Act 317, P.A. 1969 (Worker's Compensation) and
Part 5 of Act 451 of 1994, as amended.*

VERIFICATION OF WORKER'S DISABILITY COMPENSATION ACT COMPLIANCE

- This verification must be completed and submitted within 21 days of contract award and prior to the issuance of the timber sale contract.
- In addition, if boxes 2B or 2C are checked, then Notice of Exclusion or Certificate of Insurance must be submitted within twenty-one (21) days of the contract award and prior to the issuance of the timber sale contract.
- All information must be typed or printed except for written signatures.

Please Check Appropriate Categories:

1. My business is organized as (you **must** check one of the boxes below):
 - A. Sole Proprietorship (individual)
 - B. Partnership
 - C. Corporation

2. You **must** check one of the boxes below:
 - A. I certify my business is a sole proprietorship and it has no employees but the sole proprietor. I am not subject to the Worker's Compensation Laws.
 - B. I certify my business has satisfied its obligation to the Worker's Compensation Act through the use of an approved Notice of Exclusion (BWC-337, Rev. 5/96). I will provide a copy of the Notice of Exclusion within 21 days of the contract award. (For questions or a copy of the BWC-337, please call the Worker's Compensation Bureau at 517-322-1195).
 - C. I certify my business has a Worker's Compensation Policy. I will provide an original Certificate of Insurance within twenty-one (21) days of the contract award.

3. If you have checked item 2(A) or 2(B), you **must** indicate the number of **both** full-time and part-time employees, other than yourself, including family members and active partners (if none, you must enter "0").

_____ Full-time Employees

_____ Part-time Employees

Name of Business		Federal ID (or) Social Security No.	
Address		Telephone ()	
City	State	ZIP	

I hereby certify that the above information is true and correct. I agree to notify the Michigan DNR of any changes that occur in factors affecting my coverage during any of my present and future operations.

Signature of Owner or Authorized Representative

Title

Date

Please complete the "SEALED BID" information on the next page

Hayward Lake 'ELB' (33-028-16)
 ; Menominee COUNTY

In response to the notice of sale to be held 3:00 p.m. (local time) on September 7, 2016, I am hereby submitting my sealed bid (firm offer) for the following forest products to be cut. Bids for individual species must be at or above the advertised price. All non-responsive bid forms may be rejected.

<u>PRODUCTS & SPECIES</u>	<u>ESTIMATED VOLUME*</u>	<u>ADVERTISED PRICE</u>	<u>BID PRICE</u>
Sawtimber			
Basswood	12.70 MBF	\$ 210.00/MBF	\$ _____
Beech	1.50 MBF	\$ 77.00/MBF	\$ _____
Paper Birch	5.30 MBF	\$ 84.00/MBF	\$ _____
Red Maple	8.00 MBF	\$ 237.00/MBF	\$ _____
Sugar Maple	19.70 MBF	\$ 476.00/MBF	\$ _____
White Pine	1.40 MBF	\$ 70.00/MBF	\$ _____
Yellow Birch	1.60 MBF	\$ 84.00/MBF	\$ _____
Pulpwood			
Balsam Fir	136.00 Cords	\$ 29.90/Cord	\$ _____
Black Spruce	336.00 Cords	\$ 27.45/Cord	\$ _____
Hemlock	77.00 Cords	\$ 14.00/Cord	\$ _____
Mixed Hardwood	610.00 Cords	\$ 33.55/Cord	\$ _____
N. White Cedar	1,517.00 Cords	\$ 31.05/Cord	\$ _____
Quaking Aspen	42.00 Cords	\$ 35.90/Cord	\$ _____
Tamarack	1,744.00 Cords	\$ 16.05/Cord	\$ _____
White Pine	3.00 Cords	\$ 27.15/Cord	\$ _____

*The volumes are statistically estimated within plus (+) or minus (-) 7.54 percent. These estimated volumes are final and not subject to adjustment. Prospective bidders are urged to examine this timber and to make their own estimates of quantity and quality.

I understand that any or all bids may be rejected. All bids must be signed and all bid items must be bid or the bid form may be rejected. I also understand that consideration and awarding a contract will be based upon my past performance and ability to complete the contract based upon equipment and staffing subject to my control.

FEDERAL ID: _____ or SOCIAL SECURITY NUMBER: _____

Company or individual bidding: _____

Company representative's name: _____

Address: _____

City: _____ State: _____ Zip: _____

IF AVAILABLE, PLEASE PLACE THE PERSONALIZED LABEL FROM YOUR PROSPECTUS IN THE ABOVE BOX.

Individual or company representative's signature: _____ Date: _____

Phone number : _____ Email (optional): _____

THE WINNING BIDDER MUST COMPLETE THE VERIFICATION OF WORKER'S DISABILITY COMPENSATION ACT COMPLIANCE (ON REVERSE SIDE IF DOUBLE SIDED) WITHIN 21 DAYS OF SALE AWARD DATE



FOR DEPARTMENT USE ONLY
Sale Number (XX - XXX - XX - XX)
Forest Management Unit:

TIMBER SALE VERIFICATION OF WORKER'S DISABILITY COMPENSATION ACT COMPLIANCE

*As required by Act 317, P.A. 1969 (Worker's Compensation) and
Part 5 of Act 451 of 1994, as amended.*

VERIFICATION OF WORKER'S DISABILITY COMPENSATION ACT COMPLIANCE

- This verification must be completed and submitted within 21 days of contract award and prior to the issuance of the timber sale contract.
- In addition, if boxes 2B or 2C are checked, then Notice of Exclusion or Certificate of Insurance must be submitted within twenty-one (21) days of the contract award and prior to the issuance of the timber sale contract.
- All information must be typed or printed except for written signatures.

Please Check Appropriate Categories:

1. My business is organized as (you **must** check one of the boxes below):
 - A. Sole Proprietorship (individual)
 - B. Partnership
 - C. Corporation

2. You **must** check one of the boxes below:
 - A. I certify my business is a sole proprietorship and it has no employees but the sole proprietor. I am not subject to the Worker's Compensation Laws.
 - B. I certify my business has satisfied its obligation to the Worker's Compensation Act through the use of an approved Notice of Exclusion (BWC-337, Rev. 5/96). I will provide a copy of the Notice of Exclusion within 21 days of the contract award. (For questions or a copy of the BWC-337, please call the Worker's Compensation Bureau at 517-322-1195).
 - C. I certify my business has a Worker's Compensation Policy. I will provide an original Certificate of Insurance within twenty-one (21) days of the contract award.

3. If you have checked item 2(A) or 2(B), you **must** indicate the number of **both** full-time and part-time employees, other than yourself, including family members and active partners (if none, you must enter "0").

_____ Full-time Employees

_____ Part-time Employees

Name of Business		Federal ID (or) Social Security No.	
Address		Telephone ()	
City	State	ZIP	

I hereby certify that the above information is true and correct. I agree to notify the Michigan DNR of any changes that occur in factors affecting my coverage during any of my present and future operations.

Signature of Owner or Authorized Representative

Title

Date

Please complete the "SEALED BID" information on the next page