



**DEPARTMENT OF NATURAL RESOURCES
STATE OF MICHIGAN**

TIMBER SALE PROSPECTUS #5876

SCHEDULED SALE DATE AND TIME: 8:30 a.m. (local time) on April 26, 2017.

LOCATION: CRYSTAL FALLS MGT UNIT, 1420 US-2 WEST, CRYSTAL FALLS, MI 49920.

PROSPECTUS NOTE: ***PLEASE NOTE - BID OPENINGS ARE NOW HELD AT 8:30 A.M. (LOCAL TIME)***

The bidder is advised to inspect the sale area and review the location, estimated volumes, operating costs and contract terms of proposed sales. Please be aware that some landowners may request 60 days or more notice for access across their land.

Notice is hereby given that bids will be received by the Unit Manager, CRYSTAL FALLS MANAGEMENT UNIT, for certain timber on the following described lands:

Camp 9 Complex (12-001-16)

Dickinson County, Advertised Price \$228,023.10, 324.7 Acres, Aspen, Hardwood.

SALE NOTE: Units 8 & 14 are limited to frozen ground or very dry summer conditions due to organic and saturated soils. No decking along county road (Camp 9) without permission from DCRC. GMO may require a permit to utilize their roads south of Units 2,6 & 7.

Smiling Porky SBW (12-026-16)

Dickinson County, Advertised Price \$96,040.05, 136.8 Acres, Hardwood, Spruce/Fir/Tamarack.

SALE NOTE: Operations limited to FROZEN GROUND conditions in Units 1, 4, 5, and 6. Roundwood operations only in Units 5 and 6. Permission across private landowners is the responsibility of the purchaser.

Access may be through private land.

Northside Notch (12-027-16)

Dickinson County, Advertised Price \$142,278.70, 209.8 Acres, Hardwood, Sugar Maple.

SALE NOTE: Sugar Maple quality is high.

DNR Road SBW (12-067-16)

Iron County, Advertised Price \$51,299.35, 123.3 Acres, Aspen, Spruce/Fir/Tamarack.

SALE NOTE: The south half of Payment Unit 4 is a wet tamarack swamp. Prospective Purchasers are encouraged to evaluate this area for operability.

A recreation site such as a trail, pathway, or campground is within the sale area or the vicinity. Certain restrictions/specifications may be applicable including time restrictions.

BID INSTRUCTIONS (VER. 09/02/2016):

1. Scheduled Bid Location, Date, and Time (2/11)

Bids must be received by the Unit Manager, CRYSTAL FALLS OFFICE, 1420 US-2 WEST, CRYSTAL FALLS, MI 49920, no later than 8:30 a.m. (local time) on April 26, 2017. For further information concerning this sale, contact Dan McNamee at 906-875-6622 extension 105.

2. Bidder's Qualifications (5/16)

Purchaser shall obtain workers compensation insurance to cover claims under Michigan's Worker's Disability Compensation Act of 1969 or similar employee benefit act of any other state applicable to an employee. If all or part of a timber sale was prepared by a private contractor, the contractor and that contractor's company are not permitted to bid on the timber sale contract. Bids will not be accepted from individuals or companies appearing on the DNR/FRD No-Bid List. This list contains the names of purchasers who previously failed to execute a contract within 21-days or who have a history of poor performance.

3. Preparation of Sealed Bids (5/16)

Bid Forms may be completed online thru Michigan DNR Timber Sale Online Bidding (OLB) at www.michigan.gov/timberbidding or by completing the hardcopy Bid Form found in the Timber Sale Prospectus. Hardcopy Bid Forms shall be manually signed in ink. Registration in OLB is considered your 'signature' for all bids submitted thru that system. Bid prices must be entered for each species and product in the Bid Price column for all material subject to bidding and all fill-in blanks must be completed. If erasures or other changes appear on the hardcopy Bid Form, each erasure or change must be initialed by the person signing the bid.

4. Submission of Sealed Bids (5/16)

Bid forms may be obtained from the Unit Manager or thru OLB. Bids may be submitted hardcopy or thru OLB. All hardcopy bids must be submitted on the bid form and in an envelope clearly identified as described in this section. NOTE: Only one bid form per bid envelope. Sealed bids must be submitted to the Unit office designated in the prospectus and must be submitted at or prior to the time established in the prospectus. The envelope should show on the outside (a) the sale name or number and (b) the date and time of bid opening, as shown in the prospectus. Bids received after the time specified in the sale prospectus are late bids and will be rejected.

It is possible for a bidder to submit multiple bids on a single sale. For example, a bid may be submitted hardcopy and a bid may be submitted thru OLB. Or, two bidders from the same company could both submit bids on the same sale. If this were to happen, the State would accept all bids received and award the contract accordingly. All bidding and contractual requirements would apply to all bids received.

5. Public Opening of Sealed Bids (7/16)

If conditions permit, the sealed bids will be publicly opened and posted at the time and place set in the prospectus.

If a bidder, present at a bid opening, has submitted bids on more than one sale, that bidder may withdraw their unopened bid envelopes or announce the withdrawal of their online bid after being declared the successful bidder on one sale.

6. Award of Contract (1/11)

Award of the contract will be made to the Bidder whose bid, conforming to the prospectus, is most advantageous to the State of Michigan on the basis of total value at rates bid for the estimated quantities. The State reserves the right to reject any bid or waive any minor irregularity in bids received. A written award mailed (or otherwise furnished) to the successful Bidder shall be deemed to result in a binding contract without further action by either party.

7. Down Payment (1/11)

The Bidder to whom award is made must make a down payment within 21 days of the sale award. The amount of the down payment will be calculated as shown in the Bond and Payment Schedule of this prospectus. Only cash may be used to meet this requirement.

8. Performance Security (1/11)

As guarantee of faithful performance, a cash bond, certificate of deposit, surety bond or irrevocable letter of credit (LOC) is required within 21 days of the sale award. The amount of the performance security is shown in the Bond and

Payment Schedule of this prospectus. If an LOC or surety is used, the coverage must extend for at least 6 months beyond the contract expiration.

9. Timber Sale Contract (9/14)

Additional conditions and requirements common to all timber sales are listed on the timber sale contract (R4031) and are available on line at www.michigan.gov/timber. Contact the Unit Manager for additional information or a sample contract. Within 21 days of the date of the award letter, the bidder must sign the contract and provide the required down payment, performance security, and verification of worker's disability compensation. The down payment and performance security shall be in accordance with the provisions of the timber sale contract, in the sums stated in this prospectus. If these actions are not taken, then the Bidder, the Bidder's corporation, and the corporation's principals may not be permitted to bid on State timber sales for a period of 1 year. In addition, the Bidder certifies that if awarded this contract, the Bidder will complete the timber sale contract in accordance with its terms and any modifications thereof including requirements to purchase, cut, and remove the included timber by the expiration date.

10. Disclaimer of Estimates and Bidder's Warranty of Inspection (7/16)

Before submitting this bid, the Bidder is advised and cautioned to inspect the sale area, review the requirements of the sale contract, and take other steps as may be reasonably necessary to ascertain the location, estimated volumes, construction estimates, and operating costs of the proposed sale. Failure to do so will not relieve the Bidder from responsibility for completing the contract.

The Bidder warrants that this bid is submitted solely on the basis of the Bidder's examination and inspection of the quality and quantity of the timber offered for sale and the Bidder's opinion of the value thereof and the costs of recovery. No reliance should be placed on the State of Michigan's estimates of timber quality, quantity or costs of recovery. Bidder further acknowledges that the State of Michigan: (i) expressly disclaims any warranty of fitness of timber for any purpose; (ii) offers this timber as is without any warranty of quality (merchantability) or quantity and (iii) expressly disclaims any warranty as to the quantity or quality of timber sold.

11. Certification and Chain-of-Custody (10/14)

Unless otherwise indicated in the contract under section 7 – Other Conditions of the Sale Specific Conditions & Requirements, the area encompassed by this timber sale is certified to the standards of the Forest Stewardship Council (FSC) - Certificate #SCS-FM/COC-00090N and the Sustainable Forestry Initiative (SFI) - Certificate #NSF-SFIS-5Y031-SF5. Forest products from this sale may be delivered to the mill as "FSC 100% and / or SFI certified" as long as the contractor hauling the forest products is chain-of-custody (COC) certified or covered under a COC certificate from the destination mill. The purchaser is responsible for maintaining COC after leaving the sale area.

12. Good Neighbor Authority (GNA) Requirements (7/16)

If the name of this timber sales contains the acronym GNA, it is authorized by the Good Neighbor Authority (GNA) and covered by various agreements between the U.S. Forest Service and the State. The timber sale occurs on federal land and the following conditions apply:

GNA contracts on US Forest Service land will not be awarded to purchasers on the Federal list of excluded parties. The System for Award Management (SAM) will be checked for active excluded parties prior to award of contract. In addition, the Bidder to whom award is made must complete an Assurance Regarding Felony Conviction or Tax Delinquent Status for Corporate Applicants (AD-3031).

13. Good Neighbor Authority (GNA) Requirements, con't (9/16)

Bidder certifies, by signing this bid form, that to the best of Bidder's knowledge that the following representations are accurate and complete.

- a. That the Bidder and its principals are not presently debarred, suspended, proposed for debarment, declared ineligible, or voluntary excluded from timber sales (covered transactions) by any Federal department or agency.
- b. That the Bidder and its principals have not within a 3-year period preceding this bid been convicted of or had a civil judgment rendered against them for commission of fraud or a criminal offense in connection with obtaining, attempting to obtain, or performing a public (Federal, State, or local) transaction or contract under a public transaction; violation of Federal or State antitrust statutes or commission of embezzlement, theft, forgery, bribery, falsification or destruction of records, making false statements, or receiving stolen property.

c. That the Bidder and its principals are not presently indicted for or otherwise criminally or civilly charged by a governmental entity (Federal, State, or local) with commission of any of the offenses enumerated in paragraph b of this certification.

d. That the Bidder and its principals have not within a 3-year period preceding this bid had one or more public transactions (Federal, State, or local) terminated for breach or default of a timber or forest product contract.

Bidders that cannot certify this requirement, in whole or in part, shall submit an explanation with their bid.

KEITH CREAGH

Director

TIMBER SALE INFORMATION

Camp 9 Complex (12-001-16)

Dickinson County (Advertised Price \$228,023.10)

SALE NOTE: Units 8 & 14 are limited to frozen ground or very dry summer conditions due to organic and saturated soils. No decking along county road (Camp 9) without permission from DCRC. GMO may require a permit to utilize their roads south of Units 2,6 & 7.

A timber sale contract for this lump sum, sealed bid timber sale will be awarded to the responsible bidder offering the highest sealed bid price. Bids must be at or above the following advertised price for each species:

<u>PRODUCTS & SPECIES</u>	<u>ESTIMATED UNITS*</u>	<u>ADVERTISED PRICE</u>
Sawtimber		
Basswood	169.30 MBF	\$ 198.00 / MBF
Sugar Maple	41.10 MBF	\$ 532.00 / MBF
Pulpwood		
Balsam Fir	252.00 Cords	\$ 17.50 / Cord
Basswood	386.00 Cords	\$ 13.45 / Cord
Mixed Hardwood	1,642.00 Cords	\$ 33.25 / Cord
Mixed Spruce	709.00 Cords	\$ 29.85 / Cord
Quaking Aspen	2,061.00 Cords	\$ 41.45 / Cord
Tamarack	102.00 Cords	\$ 18.10 / Cord

* The estimated units are final and not subject to adjustment. Prospective bidders are urged to examine this timber and to make their own estimates of quantity and quality.

BOND AND PAYMENT SCHEDULE:

1. A bond in the amount of \$18,242.00 to insure faithful performance of the conditions of the contract will be deposited by the successful bidder within 21 days of the sale award.
2. Cutting in any sale or unit without the required advance payment would be considered a trespass.
3. Total payment must be paid in advance or according to the following schedule:
 - (a) Ten percent (10%) of the sale value must be paid within 21 days of the sale award.
 - (b) The 10% down payment will be credited towards the first unit cut.
4. If no cutting takes place, the 10% down payment will not be refunded.
5. Operations on the contract issued will terminate on 06/30/2020.

Description of Timber by Payment Unit (PU)

PU	MARKET GROUP	PRODUCT	QUANTITY	UNIT	ACRES	ADVERTISE PRICE
1	Basswood	Sawtimber	19.6	MBF	23.2	\$17,263.30
	Sugar Maple		7.3	MBF		
	Basswood	Pulpwood	24.0	Cords		
	Mixed Hardwood		266.0	Cords		
	<i>Red Maple</i>	<i>Sawtimber</i>	0.1	<i>MBF</i>		
	<i>Red Maple</i>	<i>Pulpwood</i>	1.0	<i>Cords</i>		
	<i>Sugar Maple</i>		265.0	<i>Cords</i>		
	Quaking Aspen		8.0	Cords		
2	Basswood	Sawtimber	26.8	MBF	22.0	\$14,941.45
	Sugar Maple		6.0	MBF		
	Basswood	Pulpwood	39.0	Cords		
	Mixed Hardwood		178.0	Cords		
	<i>Red Maple</i>		26.0	<i>Cords</i>		
	<i>Sugar Maple</i>		152.0	<i>Cords</i>		
3	Basswood	Sawtimber	29.7	MBF	21.7	\$15,007.95
	Sugar Maple		6.1	MBF		
	Basswood	Pulpwood	74.0	Cords		
	Mixed Hardwood		137.0	Cords		
	<i>Red Maple</i>	<i>Sawtimber</i>	0.1	<i>MBF</i>		
	<i>Balsam Poplar</i>	<i>Pulpwood</i>	37.0	<i>Cords</i>		
	<i>Red Maple</i>		1.0	<i>Cords</i>		
	<i>Sugar Maple</i>		99.0	<i>Cords</i>		
	Quaking Aspen		8.0	Cords		
4	Basswood	Sawtimber	38.7	MBF	34.9	\$23,393.30
	Sugar Maple		6.4	MBF		
	Basswood	Pulpwood	93.0	Cords		
	Mixed Hardwood		272.0	Cords		
	<i>Sugar Maple</i>		272.0	<i>Cords</i>		
	Quaking Aspen		49.0	Cords		
5	Basswood	Sawtimber	54.5	MBF	26.9	\$21,851.30
	Sugar Maple		6.3	MBF		
	Basswood	Pulpwood	114.0	Cords		
	Mixed Hardwood		177.0	Cords		
	<i>Ironwood</i>		10.0	<i>Cords</i>		
	<i>Sugar Maple</i>		162.0	<i>Cords</i>		
	<i>Yellow Birch</i>		5.0	<i>Cords</i>		
	Quaking Aspen		7.0	Cords		
6	Balsam Fir	Pulpwood	6.0	Cords	16.3	\$7,872.85
	Basswood		15.0	Cords		
	Mixed Hardwood		80.0	Cords		
	<i>Red Maple</i>		6.0	<i>Cords</i>		
	<i>Sugar Maple</i>		74.0	<i>Cords</i>		
	Mixed Spruce		13.0	Cords		
	<i>White Spruce</i>		13.0	<i>Cords</i>		
	Quaking Aspen		109.0	Cords		
7	Mixed Hardwood	Pulpwood	10.0	Cords	21.9	\$13,280.05
	<i>Ironwood</i>		5.0	<i>Cords</i>		
	<i>Sugar Maple</i>		5.0	<i>Cords</i>		
	Mixed Spruce		38.0	Cords		
	<i>White Spruce</i>		38.0	<i>Cords</i>		
	Quaking Aspen		285.0	Cords		
8	Mixed Hardwood	Pulpwood	11.0	Cords	23.9	\$8,868.50
	<i>Balsam Poplar</i>		7.0	<i>Cords</i>		
	<i>Paper Birch</i>		4.0	<i>Cords</i>		
	Mixed Spruce		223.0	Cords		
	<i>Black Spruce</i>		219.0	<i>Cords</i>		

Description of Timber by Payment Unit (PU), con't

PU	MARKET GROUP	PRODUCT	QUANTITY	UNIT	ACRES	ADVERTISE PRICE
	<i>White Spruce</i>		4.0	<i>Cords</i>		
	Tamarack		102.0	Cords		
9	Balsam Fir	Pulpwood	2.0	Cords	21.6	\$13,676.25
	Basswood		14.0	Cords		
	Mixed Hardwood		17.0	Cords		
	<i>Paper Birch</i>		15.0	<i>Cords</i>		
	<i>Sugar Maple</i>		2.0	<i>Cords</i>		
	Mixed Spruce		11.0	Cords		
	<i>White Spruce</i>		11.0	<i>Cords</i>		
	Quaking Aspen		303.0	Cords		
10	Balsam Fir	Pulpwood	20.0	Cords	18.3	\$19,599.45
	Mixed Hardwood		18.0	Cords		
	<i>Balsam Poplar</i>		7.0	<i>Cords</i>		
	<i>Red Maple</i>		3.0	<i>Cords</i>		
	<i>Sugar Maple</i>		8.0	<i>Cords</i>		
	Mixed Spruce		18.0	Cords		
	<i>White Spruce</i>		18.0	<i>Cords</i>		
	Quaking Aspen		437.0	Cords		
11	Sugar Maple	Sawtimber	7.5	MBF	19.1	\$17,353.85
	Balsam Fir	Pulpwood	7.0	Cords		
	Basswood		7.0	Cords		
	Mixed Hardwood		120.0	Cords		
	<i>Balsam Poplar</i>		5.0	<i>Cords</i>		
	<i>Paper Birch</i>		9.0	<i>Cords</i>		
	<i>Red Maple</i>		4.0	<i>Cords</i>		
	<i>Sugar Maple</i>		102.0	<i>Cords</i>		
	Mixed Spruce		11.0	Cords		
	<i>White Spruce</i>		11.0	<i>Cords</i>		
	Quaking Aspen		213.0	Cords		
12	Sugar Maple	Sawtimber	1.5	MBF	15.7	\$15,226.00
	Balsam Fir	Pulpwood	12.0	Cords		
	Basswood		6.0	Cords		
	Mixed Hardwood		142.0	Cords		
	<i>Sugar Maple</i>		142.0	<i>Cords</i>		
	Mixed Spruce		3.0	Cords		
	<i>White Spruce</i>		3.0	<i>Cords</i>		
	Quaking Aspen		225.0	Cords		
13	Balsam Fir	Pulpwood	59.0	Cords	21.7	\$17,659.20
	Mixed Hardwood		102.0	Cords		
	<i>Balsam Poplar</i>		37.0	<i>Cords</i>		
	<i>Paper Birch</i>		19.0	<i>Cords</i>		
	<i>Red Maple</i>		14.0	<i>Cords</i>		
	<i>Sugar Maple</i>		32.0	<i>Cords</i>		
	Mixed Spruce		174.0	Cords		
	<i>White Spruce</i>		174.0	<i>Cords</i>		
	Quaking Aspen		194.0	Cords		
14	Balsam Fir	Pulpwood	86.0	Cords	20.7	\$15,933.15
	Mixed Hardwood		50.0	Cords		
	<i>Balsam Poplar</i>		3.0	<i>Cords</i>		
	<i>Paper Birch</i>		40.0	<i>Cords</i>		
	<i>Red Maple</i>		5.0	<i>Cords</i>		
	<i>Sugar Maple</i>		2.0	<i>Cords</i>		
	Mixed Spruce		118.0	Cords		
	<i>White Spruce</i>		118.0	<i>Cords</i>		
	Quaking Aspen		223.0	Cords		

Description of Timber by Payment Unit (PU), con't

PU	MARKET GROUP	PRODUCT	QUANTITY	UNIT	ACRES	ADVERTISE PRICE
15	Balsam Fir	Pulpwood	60.0	Cords	16.8	\$6,096.50
	Mixed Hardwood		62.0	Cords		
	<i>Balsam Poplar</i>		3.0	<i>Cords</i>		
	<i>Paper Birch</i>		4.0	<i>Cords</i>		
	<i>Red Maple</i>		50.0	<i>Cords</i>		
	<i>Sugar Maple</i>		5.0	<i>Cords</i>		
	Mixed Spruce		100.0	Cords		
	<i>Black Spruce</i>		42.0	<i>Cords</i>		
	<i>White Spruce</i>		58.0	<i>Cords</i>		
TOTAL:			210.4	MBF		
TOTAL:			5,152.0	Cords		

Sale Specific Conditions & Requirements

Sale Name: Camp 9 Complex

Sale Number: 12-001-16 Seq#: 1

1 - Sale Area

1.2 - Boundaries

1.2.1 - Painted boundaries (1/14)

The sale boundary and Payment Unit boundaries are marked and identified by blue, red and yellow paint. Exterior sale boundary lines against private property are marked with blue paint. Exterior sale boundary lines against state are marked with red paint. Interior Payment Unit boundaries are marked with yellow paint. The painted boundary line trees are not Included Timber and are to be protected unless marked with orange paint.

2 - Timber Specifications

2.1 - Included Timber

2.1.2 - Clearcut unit(s) w/o unmerchantable trees (8/11)

Within Payment Unit(s) 6-15, cut all trees which meet minimum piece specifications in 2.2 Utilization EXCEPT cedar, hemlock and pine. In addition, GREEN painted trees in Payment Units 6 and 8 are to be retained.

2.1.3 - Cut tree marked unit(s) (12/08)

Within Payment Unit(s) 1-5, all trees are designated for cutting when marked with orange paint above and below stump height, regardless of merchantability.

2.2 - Utilization

2.2.4 - Skidding length (2/14)

Skidding of unlimbed tops or lengths over 17 feet is not permissible in Payment Units 1-5.

2.2.9 - No chipping permitted (12/08)

Within Payment Unit(s) 1-5, tops may not be chipped.

3 - Payments

3.3 - Pre-measured Sales

3.3.4 - Dividing payment units (7/14)

Payment Unit(s) may be divided at the request of the Purchaser and upon approval of the Unit Manager. Dividing Payment Units is a contract modification which requires a Timber Sale Contract Supplement. There will be only one division per Payment Unit.

3.4 - Damaged Timber

3.4.1 - Damaged timber (6/14)

General Condition and Requirement 3.4 Damaged Timber, defines liquidated damages for undesignated live merchantable trees which are cut or injured. In addition, extreme care should be taken to avoid damage to tree seedlings and saplings.

If more than 40% of the sugar maple saplings (1/4" to 4.5" DBH) within Payment Units 6 and 7 are damaged, liquidated damages will be assessed at \$100 per acre for all acreage within that specified portion of the sale area that was damaged.

No damage is acceptable to merchantable trees. Within the sale area, if more than 10% of trees (> 4.5" DBH) within a specified area of the sale are damaged, liquidated damages will be assessed for all trees damaged. Rates will be in accordance with General Condition and Requirement 3.4 Damaged Timber or at a rate of \$15 per sawtimber tree and \$5 per pole sized tree, whichever is greater.

4 - Transportation

4.1 - Construction

4.1.4 - Timber removed for construction (12/09)

Trees cut or damaged in the process of pre-approved road, landing or skid trail construction will be decked in an area separate from other Designated Timber and not removed until measured by the sale administrator. Payment will be made at the specified Purchase Unit Price. No road trees are to be cut on private property.

4.1.6 - Road construction (1/09)

Construction of new roads or improvements of existing roads shall be done in such a way as to minimize the environmental and visual impacts. Merchantable trees shall be cut and utilized unless otherwise directed. Non-merchantable trees shall be severed and laid flat on the ground. Slash shall be scattered, and not left in windrows and kept a minimum of 10 feet back from the road edge. Stumps shall be set upright, not left on edge, and be moved at least 5 feet away from the road edge. Disturbed soil shall be feathered into the woods and not left in berms or windrows.

4.1.7 - Road closure (10/11)

All new roads built into the sale must be blocked to vehicle traffic upon completion of the sale. Overgrown roads that are reopened shall be considered new roads. In general, this will require constructing a four (4') foot high berm of stumps and logs covered with earth. These roads must be rendered impassable to cars and trucks. Contact the sale administrator for specific details of design and placement.

4.2 - Maintenance

4.2.1 - Hauling restriction (12/08)

Hauling may be restricted on forest roads by the Unit Manager or his/her representative. The restriction may occur during spring breakup or prolonged wet weather conditions.

4.3 - Public Right-of-Way

4.3.2 - County R-O-W (12/06)

The county must be contacted prior to decking along the county road R-O-W. This applies to Camp 9 Road.

4.4 - Access

4.4.1 - Private property access (3/11)

Permission for access across private land is the responsibility of the Purchaser. GMO may require a permit if utilizing their road on the south side of Units 2, 6 & 7.

5 - Operations

5.1 - Notification

5.1.1 - Pre-sale conference (10/11)

A pre-sale conference between the Purchaser and sale administrator is required prior to beginning any operations to determine landing and road locations. The Unit Manager or his/her representative must be contacted at least 5 days in advance to schedule the conference.

5.1.4 - Post-sale conference (6/11)

A post-sale conference on site between the Purchaser and sale administrator is required 5 days prior to the completion of active logging operations to determine clean-up and repair of landings, road edges, and the fulfillment of other contract specifications.

5.2 - Conduct of Operations

5.2.1 - Slash

5.2.1.11 - Slash for reforestation (5/07)

To facilitate reforestation, the sale area shall be left with slash evenly distributed. Bunched tops within the cutting area shall be broken up and scattered. Stumps shall be cut low to the ground. Processing sites shall not be left with a compacted layer of slash; tops from these sites shall be hauled back into the cut area and scattered.

5.2.2 - Hazard Trees/Snags

5.2.2.1 - Den trees (2/04)

Obvious hollow and/or den trees shall be protected and left standing unless they are a safety hazard.

5.2.3 - Operating Restrictions

5.2.3.1 - Operating restrictions (9/11)

Within Payment Unit(s) 8 and 14, unless changed by written agreement, cutting and skidding are limited to frozen ground or VERY DRY summer conditions only. This restriction is because of the organic and saturated soils.

The north lobe of Payment Unit 14 is accessed across an existing trail through cedar. This trail is extremely wet and may take some effort to freeze.

5.2.3.3 - Bark slippage restriction (3/09)

Within Payment Unit(s) 1-5, unless changed by written agreement, cutting and skidding are not permitted during the period of April 1 to July 15. This restriction is because of bark slippage.

5.2.3.11 - Coppice regeneration protection (4/10)

Timber harvesting in any Payment Unit must be completed before significant aspen sprouting occurs in that Payment Unit so as to minimize damage to the new regeneration. Any post harvest operations, such as chipping, must be completed before sprouting of regeneration occurs. If it is anticipated that chipping will be delayed, then tops shall be carried to one central location or left unchipped. The Unit Manager or his/her representative may cease such operations if sprouting occurs before the operation is complete.

5.2.32 - Decking/landing restoration (9/13)

All decking and landing areas must have the surface area restored to a condition equal to or better than before. This is to ensure the proper regeneration of the stand.

5.4 - Soil Protection

5.4.1 - Rutting restriction, general (7/16)

Operations are to cease immediately if equipment and weather conditions result in rutting of roads and/or skid trails which is 12 inches or greater in depth and 50 feet in length. The Unit Manager or his/her representative may restrict hauling and/or skidding if ruts exceed the specified depth. With the Unit Manager or his/her representative's approval, the Purchaser may return to the area when the risk of rutting has decreased.

6 - Safety and Fire Prevention

6.2 - Signing

6.2.1 - Road posting (9/09)

The Purchaser is responsible for posting and maintaining caution signs on Camp 9 Road prior to beginning operations. The road must be posted approximately 1/4 mile from sale area, on the north and south ends, to warn of logging activity and truck traffic. Signs must be removed when harvest operations are suspended or completed. The Purchaser will provide these signs.

7 - Other Conditions

7.2 - Extensions

7.2.1 - One year extension (2/04)

Given justification, only one, 1 year extension may be granted if the contract has been paid for in full.

7.5 - Loss

7.5.1 - Deteriorating timber (7/09)

The sale area has received damage from spruce budworm. The Purchaser should harvest the wood as soon as possible. The Department of Natural Resources is held free of responsibility of any further damage or deterioration due to delay in harvesting.



TIMBER SALE MAP

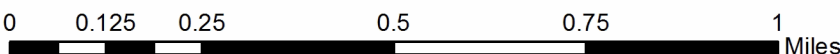
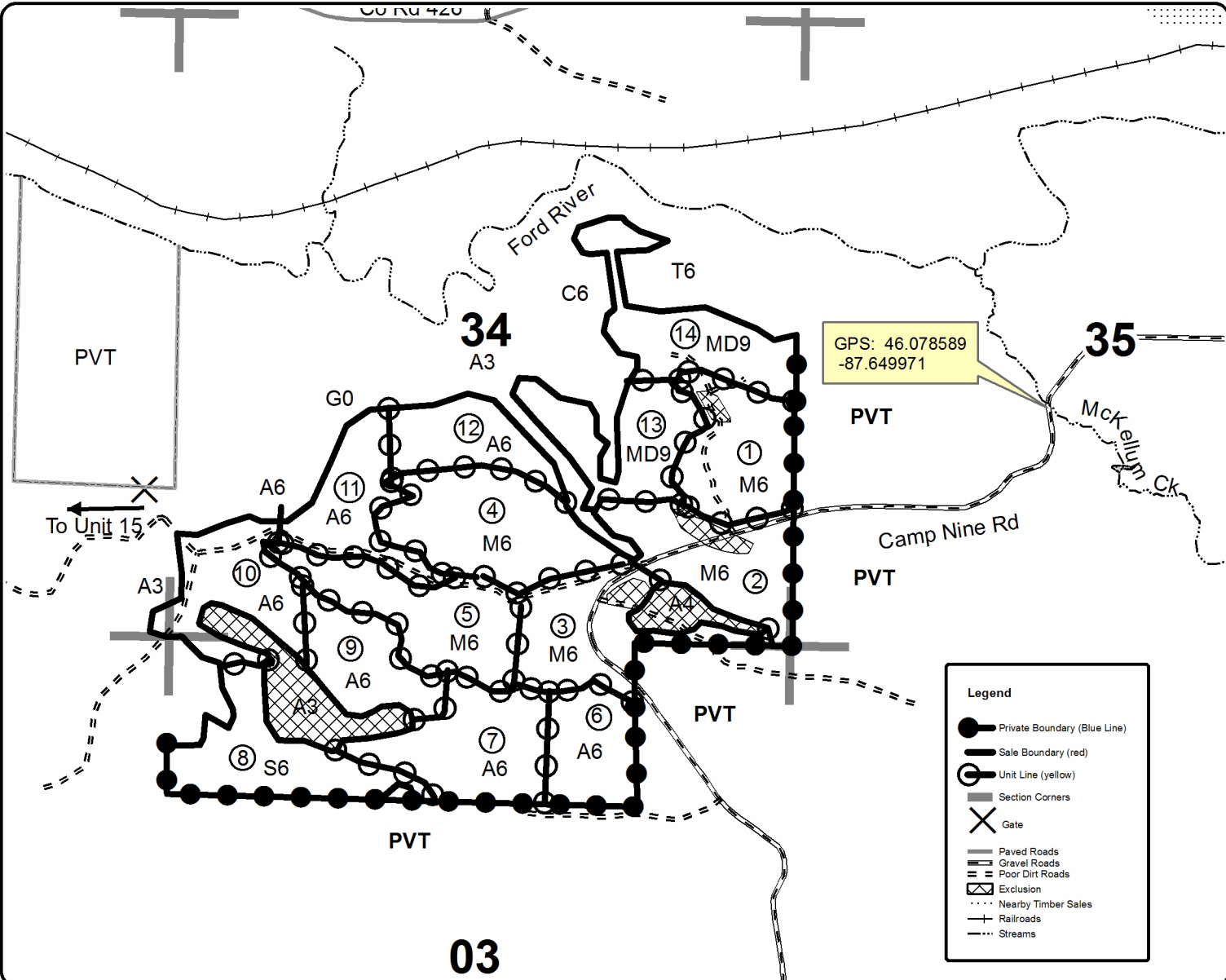
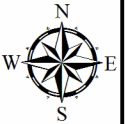
This information provided by authority of Part 525, 1994 PA 451, as amended.

Forest Management Unit Crystal Falls		County Dickinson	Mapped By Goupell		Date 9/6/2016	Page 1	of 2
Township 42/43N	Range 27W	Section(s) and Subdivision(s) 34: S1/2,S1/2NE T43N Sec 33: W1/2SW,SESW,S1/2SE 34: S1/2,S1/2NE T42N Sec 3: N1/2NW,NWNE			Scale 1:15,840		

Cover Type				Density			
A = Aspen	H = Hemlock	N = Marsh	U = Upland Brush	0 = Non Stocked	5 = Pole Timber Medium		
B = Paper Birch	J = Jack Pine	O = Oak	UM = Upland Mixed	1 = Seedling Sapling Poor	6 = Pole Timber Well		
C = Cedar	L = Lowland Brush	P = Lowland Poplar	V = Bog or Marsh	2 = Seedling Sapling Medium	7 = Saw Timber Poor		
D = Treed Bog	LM = Lowland Mixed	Q = Mixed Swamp Conifer	W = White Pine	3 = Seedling Sapling Well	8 = Saw Timber Medium		
E = Swamp Hdwoods	M = Mpl, Bch, Brch	R = Red Pine	X = Non Stocked	4 = Pole Timber Poor	9 = Saw Timber Well		
F = Spruce Fir	MC = Mixed Conifer	S = Black Spruce	Z = Water				
G = Grass	MD = Mixed Deciduous	T = Tamarack					

PU	Acres	PU	Acres	PU	Acres	PU	Acres
1	23.2	5	26.9	9	21.6	13	21.7
2	22.0	6	16.3	10	18.3	14	20.7
3	21.7	7	21.9	11	19.1	15	16.8
4	34.9	8	23.9	12	15.7		

Camp 9 Complex
Compartment 64
324.7 Acres





TIMBER SALE MAP

This information provided by authority of Part 525, 1994 PA 451, as amended.

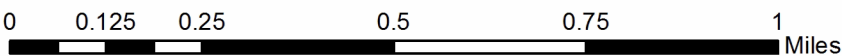
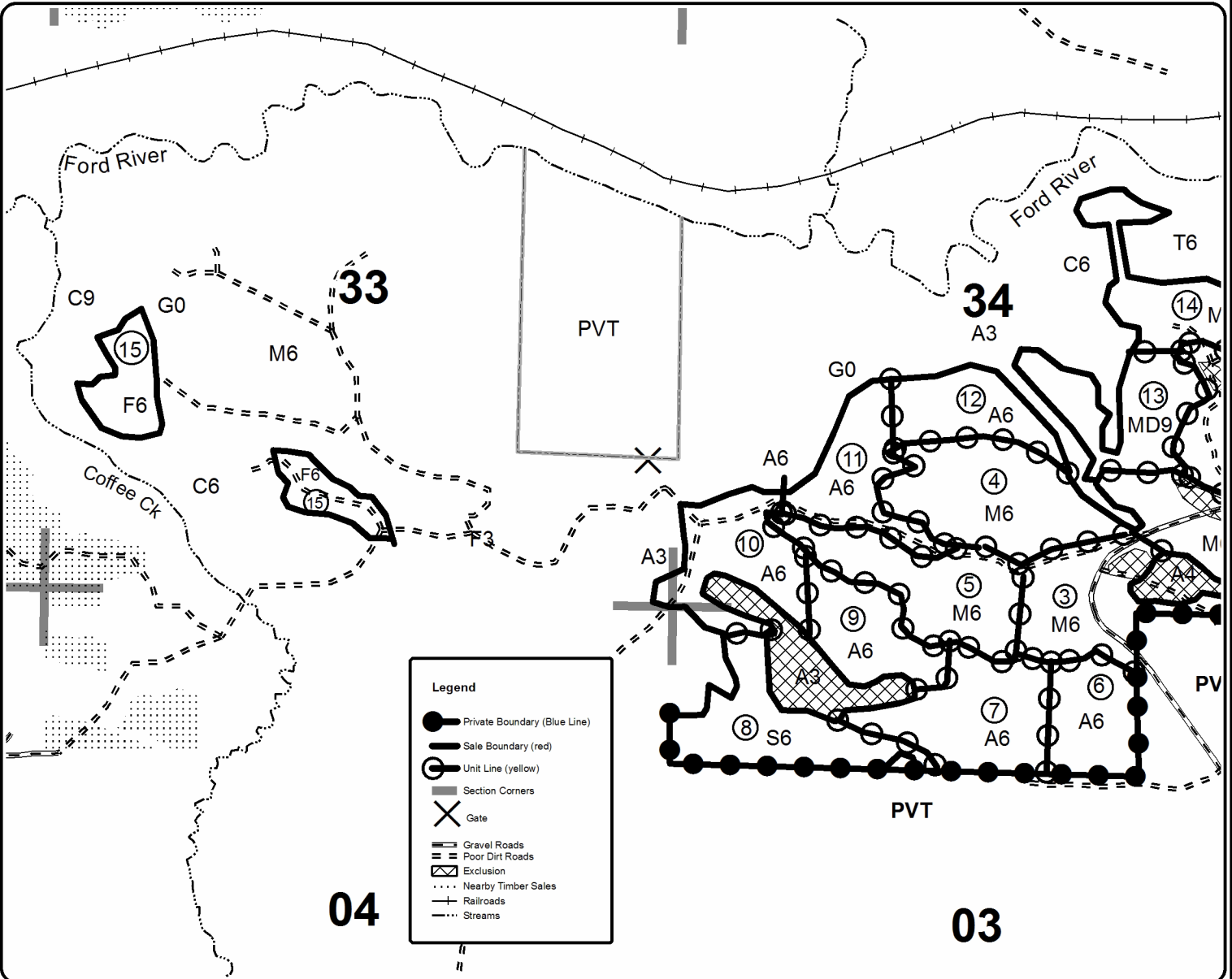
Forest Management Unit Crystal Falls		County Dickinson	Mapped By Goupell	Date 9/6/2016	Page 2	of 2
Township 42/43N	Range 27W	Section(s) and Subdivision(s) T43N Sec 33: W1/2SW, SESW, S1/2SE 34: S1/2, S1/2NE T42N Sec 3: N1/2NW, NWNE		Scale 1:15,840		

Cover Type				Density			
A = Aspen	H = Hemlock	N = Marsh	U = Upland Brush	0 = Non Stocked	5 = Pole Timber Medium		
B = Paper Birch	J = Jack Pine	O = Oak	UM = Upland Mixed	1 = Seedling Sapling Poor	6 = Pole Timber Well		
C = Cedar	L = Lowland Brush	P = Lowland Poplar	V = Bog or Marsh	2 = Seedling Sapling Medium	7 = Saw Timber Poor		
D = Treed Bog	LM = Lowland Mixed	Q = Mixed Swamp Conifer	W = White Pine	3 = Seedling Sapling Well	8 = Saw Timber Medium		
E = Swamp Hdwoods	M = Mpl, Bch, Brch	R = Red Pine	X = Non Stocked	4 = Pole Timber Poor	9 = Saw Timber Well		
F = Spruce Fir	MC = Mixed Conifer	S = Black Spruce	Z = Water				
G = Grass	MD = Mixed Deciduous	T = Tamarack					

PU	Acres	PU	Acres	PU	Acres	PU	Acres
1	23.2	5	26.9	9	21.6	13	21.7
2	22.0	6	16.3	10	18.3	14	20.7
3	21.7	7	21.9	11	19.1	15	16.8
4	34.9	8	23.9	12	15.7		

Camp 9 Complex

Compartment 64
324.7 Acres



TIMBER SALE INFORMATION

Smiling Porky SBW (12-026-16)

Dickinson County (Advertised Price \$96,040.05)

SALE NOTE: Operations limited to FROZEN GROUND conditions in Units 1, 4, 5, and 6. Roundwood operations only in Units 5 and 6. Permission across private landowners is the responsibility of the purchaser.

Access may be through private land.

A timber sale contract for this lump sum, sealed bid timber sale will be awarded to the responsible bidder offering the highest sealed bid price. Bids must be at or above the following advertised price for each species:

<u>PRODUCTS & SPECIES</u>	<u>ESTIMATED UNITS*</u>	<u>ADVERTISED PRICE</u>
Sawtimber		
Red Maple	28.70 MBF	\$ 281.00 / MBF
Sugar Maple	26.00 MBF	\$ 496.00 / MBF
Pulpwood		
Balsam Fir	174.00 Cords	\$ 16.30 / Cord
Balsam Poplar	108.00 Cords	\$ 38.70 / Cord
Basswood	37.00 Cords	\$ 12.55 / Cord
Black Spruce	250.00 Cords	\$ 27.85 / Cord
Mixed Hardwood	1,366.00 Cords	\$ 31.00 / Cord
N. White Cedar	2.00 Cords	\$ 27.85 / Cord
Quaking Aspen	247.00 Cords	\$ 38.70 / Cord
Tamarack	19.00 Cords	\$ 16.90 / Cord
White Spruce	300.00 Cords	\$ 27.85 / Cord

* The total volume is statistically estimated within plus (+) or minus (-) 10.48 percent. The estimated units are final and not subject to adjustment. Prospective bidders are urged to examine this timber and to make their own estimates of quantity and quality.

BOND AND PAYMENT SCHEDULE:

1. A bond in the amount of \$4,802.00 to insure faithful performance of the conditions of the contract will be deposited by the successful bidder within 21 days of the sale award.
2. Cutting in any sale or unit without the required advance payment would be considered a trespass.
3. Total payment must be paid in advance or according to the following schedule:
 - (a) Ten percent (10%) of the sale value must be paid within 21 days of the sale award.
 - (b) The 10% down payment will be credited towards the first unit cut.
4. If no cutting takes place, the 10% down payment will not be refunded.
5. Operations on the contract issued will terminate on 06/30/2020.

Description of Timber by Payment Unit (PU)

PU	MARKET GROUP	PRODUCT	QUANTITY	UNIT	ACRES	ADVERTISE PRICE
1	Red Maple	Sawtimber	7.9	MBF	15.1	\$11,383.15
	Sugar Maple		2.1	MBF		
	Balsam Fir	Pulpwood	10.0	Cords		
	Basswood		18.0	Cords		
	<i>Basswood</i>	<i>Sawtimber</i>	3.3	<i>MBF</i>		
	<i>Basswood</i>	<i>Pulpwood</i>	11.0	<i>Cords</i>		
	Black Spruce		15.0	Cords		
	Mixed Hardwood		218.0	Cords		
	<i>Paper Birch</i>	<i>Sawtimber</i>	1.7	<i>MBF</i>		
	<i>Black Ash</i>	<i>Pulpwood</i>	5.0	<i>Cords</i>		
	<i>Black Cherry</i>		5.0	<i>Cords</i>		
	<i>Ironwood</i>		4.0	<i>Cords</i>		
	<i>Paper Birch</i>		18.0	<i>Cords</i>		
	<i>Red Maple</i>		113.0	<i>Cords</i>		
	<i>Sugar Maple</i>		58.0	<i>Cords</i>		
	<i>Yellow Birch</i>		12.0	<i>Cords</i>		
	White Spruce		20.0	Cords		
	2	Red Maple	Sawtimber	4.4		
Sugar Maple			1.1	MBF		
Balsam Fir		Pulpwood	11.0	Cords		
Balsam Poplar			9.0	Cords		
Basswood			5.0	Cords		
<i>Basswood</i>			5.0	<i>Cords</i>		
Mixed Hardwood			165.0	Cords		
<i>Black Cherry</i>			1.0	<i>Cords</i>		
<i>Paper Birch</i>			1.0	<i>Cords</i>		
<i>Red Maple</i>			92.0	<i>Cords</i>		
<i>Sugar Maple</i>			64.0	<i>Cords</i>		
<i>Yellow Birch</i>			7.0	<i>Cords</i>		
Quaking Aspen			15.0	Cords		
White Spruce			9.0	Cords		
3	Red Maple	Sawtimber	13.9	MBF	26.6	\$25,712.40
	Sugar Maple		3.3	MBF		
	Balsam Fir	Pulpwood	36.0	Cords		
	Balsam Poplar		27.0	Cords		
	Basswood		14.0	Cords		
	<i>Basswood</i>		14.0	<i>Cords</i>		
	Mixed Hardwood		511.0	Cords		
	<i>Black Cherry</i>		2.0	<i>Cords</i>		
	<i>Paper Birch</i>		2.0	<i>Cords</i>		
	<i>Red Maple</i>		287.0	<i>Cords</i>		
	<i>Sugar Maple</i>		199.0	<i>Cords</i>		
	<i>Yellow Birch</i>		21.0	<i>Cords</i>		
	Quaking Aspen		45.0	Cords		
	White Spruce		28.0	Cords		
4	Balsam Fir	Pulpwood	55.0	Cords	15.7	\$8,438.15
	Balsam Poplar		10.0	Cords		
	Black Spruce		22.0	Cords		
	Mixed Hardwood		40.0	Cords		
	<i>Paper Birch</i>		2.0	<i>Cords</i>		
	<i>Red Maple</i>		38.0	<i>Cords</i>		
	N. White Cedar		2.0	Cords		
	Quaking Aspen		60.0	Cords		
	White Spruce		105.0	Cords		
	5	Balsam Fir	Pulpwood	42.0		
Balsam Poplar			42.0	Cords		

Description of Timber by Payment Unit (PU), con't

PU	MARKET GROUP	PRODUCT	QUANTITY	UNIT	ACRES	ADVERTISE PRICE	
5 con't	Black Spruce	Pulpwood	143.0	Cords			
	Mixed Hardwood		41.0	Cords			
	<i>Paper Birch</i>		40.0	<i>Cords</i>			
	<i>Sugar Maple</i>		1.0	<i>Cords</i>			
	Quaking Aspen		85.0	Cords			
	Tamarack		13.0	Cords			
	White Spruce		93.0	Cords			
6	Balsam Fir	Pulpwood	20.0	Cords	9.7	\$6,680.55	
	Balsam Poplar		20.0	Cords			
	Black Spruce		70.0	Cords			
	Mixed Hardwood		21.0	Cords			
	<i>Paper Birch</i>		20.0	<i>Cords</i>			
	<i>Sugar Maple</i>		1.0	<i>Cords</i>			
	Quaking Aspen		42.0	Cords			
	Tamarack		6.0	Cords			
	White Spruce		45.0	Cords			
7	Red Maple	Sawtimber	2.3	MBF	28.2	\$16,208.30	
	Sugar Maple		14.5	MBF			
	Mixed Hardwood	Pulpwood	270.0	Cords			
	<i>Ironwood</i>		7.0	<i>Cords</i>			
	<i>Red Maple</i>		48.0	<i>Cords</i>			
	<i>Sugar Maple</i>		211.0	<i>Cords</i>			
	<i>Yellow Birch</i>		4.0	<i>Cords</i>			
8	Red Maple	Sawtimber	0.2	MBF	13.2	\$5,636.20	
	Sugar Maple		5.0	MBF			
	Mixed Hardwood	Pulpwood	100.0	Cords			
	<i>Paper Birch</i>		<i>Sawtimber</i>	0.9			<i>MBF</i>
	<i>Ironwood</i>		<i>Pulpwood</i>	1.0			<i>Cords</i>
	<i>Paper Birch</i>		3.0	<i>Cords</i>			
	<i>Red Maple</i>		44.0	<i>Cords</i>			
	<i>Sugar Maple</i>		50.0	<i>Cords</i>			
TOTAL:			54.7	MBF			
TOTAL:			2,503.0	Cords			

Sale Specific Conditions & Requirements

Sale Name: Smiling Porky SBW

Sale Number: 12-026-16 Seq#: 1

1 - Sale Area

1.2 - Boundaries

1.2.1 - Painted boundaries (1/14)

The sale boundary and Payment Unit boundaries are marked and identified by blue, red and yellow paint. Exterior sale boundary lines against private property are marked with blue paint. Exterior sale boundary lines against state are marked with red paint. Interior Payment Unit boundaries are marked with yellow paint. The painted boundary line trees are not Included Timber and are to be protected unless marked with orange paint. Yellow painted trees designating an interior Payment Unit boundary are only to be cut when all surrounding Payment Units have been paid.

2 - Timber Specifications

2.1 - Included Timber

2.1.1 - Clearcut unit(s) with unmerchantable trees (6/14)

Within Payment Unit(s) #'s 4a, 4b, 4c, cut all trees that are two (2) inches or more at DBH except Pine, and Hemlock. In addition, within Payment Unit #'s 4a and 4c, leave all Cedar. Cedar is to be harvested in Payment Unit # 4b.

2.1.3 - Cut tree marked unit(s) (12/08)

Within Payment Unit(s) #'s 7, 8, all trees are designated for cutting when marked with orange paint above and below stump height, regardless of merchantability.

2.1.7 - Leave tree marked unit(s) (6/14)

Within Payment Unit(s) #'s 1, 2, 3, 5, 6, cut all trees that are two (2) inches or more at DBH except Cedar, Hemlock, Pine and trees marked with GREEN paint above and below stump height.

2.2 - Utilization

2.2.6 - Roundwood operation required (5/07)

The skidding of whole trees or tree segments with limbs attached is prohibited within Payment Unit(s) #'s 5 and 6 to provide seed for regenerating stand. All products must be produced as roundwood and forwarded to existing roads or landing areas in final product length.

3 - Payments

3.4 - Damaged Timber

3.4.1 - Damaged timber (6/14)

General Condition and Requirement 3.4 Damaged Timber, defines liquidated damages for undesignated live merchantable trees which are cut or injured. No damage is acceptable to merchantable trees. Within the sale area, if more than 10% of trees (> 4.5" DBH) within a specified area of the sale are damaged, liquidated damages will be assessed for all trees damaged. Rates will be in accordance with General Condition and Requirement 3.4 Damaged Timber.

4 - Transportation

4.1 - Construction

4.1.6 - Road construction (1/09)

Construction of new roads or improvements of existing roads shall be done in such a way as to minimize the environmental and visual impacts. Merchantable trees shall be cut and utilized unless otherwise directed. Non-merchantable trees shall be severed and laid flat on the ground. Slash shall be scattered, and not left in windrows and kept a minimum of 10 feet back from the road edge. Stumps shall be set upright, not left on edge, and be moved at least 10 feet away from the road edge. Disturbed soil shall be feathered into the woods and not left in berms or windrows.

4.1.7 - Road closure (10/11)

All new roads built into the sale must be blocked to vehicle traffic upon completion of the sale. Overgrown roads that are reopened shall be considered new roads.

4.4 - Access

4.4.1 - Private property access (3/11)

Permission for access across private land is the responsibility of the Purchaser.

5 - Operations

5.1 - Notification

5.1.1 - Pre-sale conference (10/11)

A pre-sale conference between the Purchaser and sale administrator is required prior to beginning any operations. The Unit Manager or his/her representative must be contacted at least 10 days in advance to schedule the conference.

5.2 - Conduct of Operations

5.2.1 - Slash

5.2.1.13 - Dispose of slash as directed (12/05)

Slash is to be disposed of as directed by the sale administrator.

5.2.2 - Hazard Trees/Snags

5.2.2.1 - Den trees (2/04)

Obvious hollow and/or den trees shall be protected and left standing unless they are a safety hazard.

5.2.3 - Operating Restrictions

5.2.3.1 - Operating restrictions (9/11)

Within Payment Unit(s) #'s 1, 4, 5, and 6 cutting, skidding, and hauling are limited to FROZEN GROUND conditions. This restriction is due to the wet soils.

5.2.3.3 - Bark slippage restriction (3/09)

Within Payment Unit(s) #'s 7, and 8, cutting and skidding are not permitted during the period of April 15 to July 15. This restriction is because of bark slippage.

5.4 - Soil Protection

5.4.1 - Rutting restriction, general (7/16)

Operations are to cease immediately if equipment and weather conditions result in rutting of roads and/or skid trails which is 12 inches or greater in depth and 50 feet in length. The Unit Manager or his/her representative may restrict hauling and/or skidding if ruts exceed the specified depth. With the Unit Manager or his/her representative's approval, the Purchaser may return to the area when the risk of rutting has decreased.

7 - Other Conditions

7.5 - Loss

7.5.1 - Deteriorating timber (7/09)

The sale area has received damage from Spruce Budworm. The Purchaser should harvest the wood as soon as possible. The Department of Natural Resources is held free of responsibility of any further damage or deterioration due to delay in harvesting.



TIMBER SALE MAP

This information provided by authority of Part 525, 1994 PA 451, as amended.

Forest Management Unit		County	Mapped By		Date	Page of	
Crystal Falls		Dickinson	Church		09/26/2016	1	1
Township		Section(s) and Subdivision(s)			Scale		
T42 & 43N		43N 27W: Sec 31 N1/2SE, SES; Sec 32 S1/2, SENW; Sec 33 SWSW			1:15,840		
Range		Cruised By					
R27W		Church/Goupell					

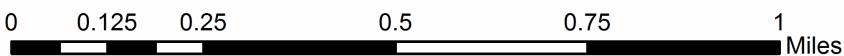
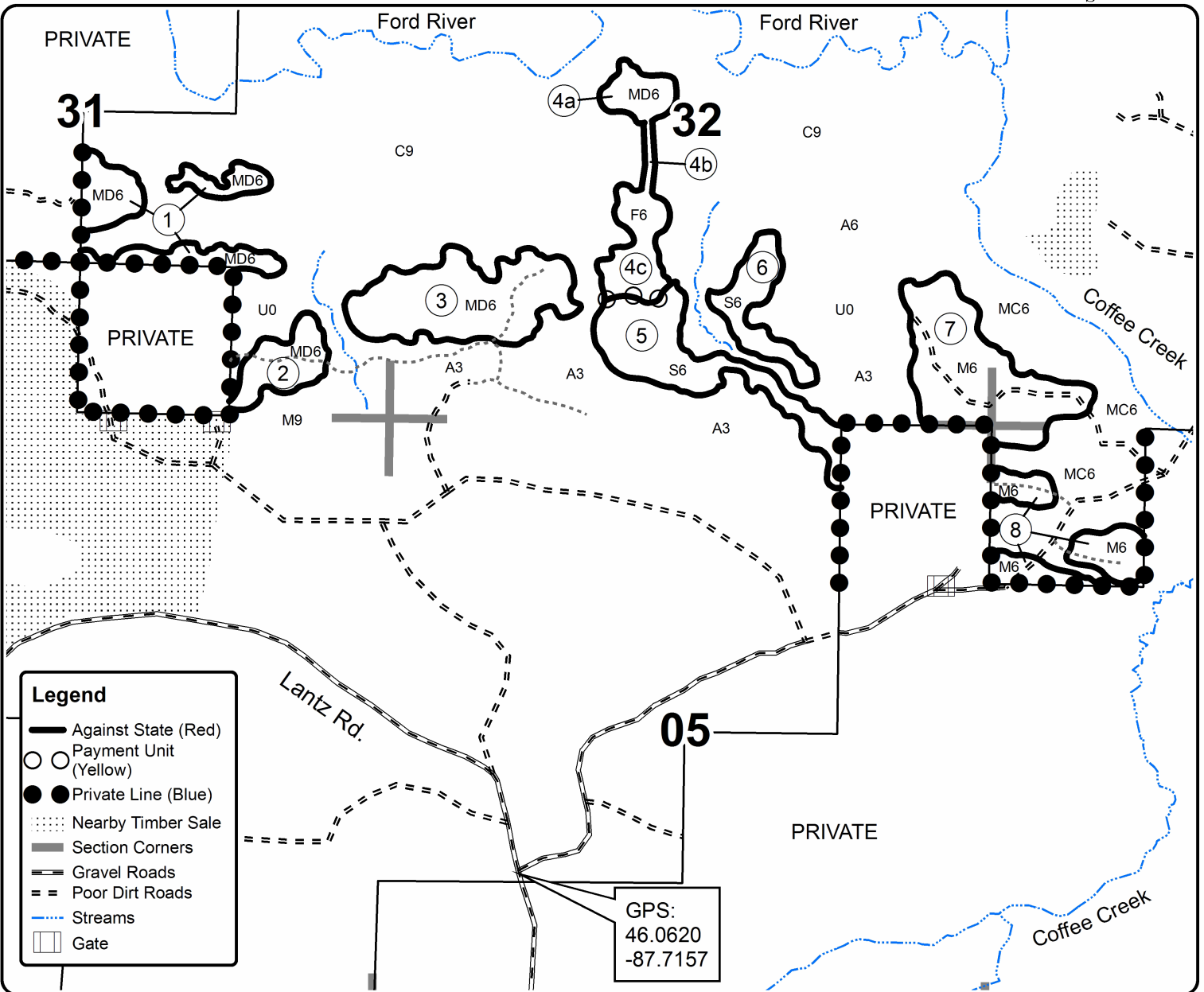
Cover Type				Density			
A = Aspen	H = Hemlock	N = Marsh	U = Upland Brush	0 = Non Stocked	5 = Pole Timber Medium		
B = Paper Birch	J = Jack Pine	O = Oak	UM = Upland Mixed	1 = Seedling Sapling Poor	6 = Pole Timber Well		
C = Cedar	L = Lowland Brush	P = Lowland Poplar	V = Bog or Marsh	2 = Seedling Sapling Medium	7 = Saw Timber Poor		
D = Treed Bog	LM = Lowland Mixed	Q = Mixed Swamp Conifer	W = White Pine	3 = Seedling Sapling Well	8 = Saw Timber Medium		
E = Swamp Hdwoods	M = Mpl, Bch, Brch	R = Red Pine	X = Non Stocked	4 = Pole Timber Poor	9 = Saw Timber Well		
F = Spruce Fir	MC = Mixed Conifer	S = Black Spruce	Z = Water				
G = Grass	MD = Mixed Deciduous	T = Tamarack					

PU	Acres	PU	Acres
1	15.1	5	19.8
2	8.5	6	9.7
3	26.6	7	28.2
4	15.7	8	13.2

Smiling Porky SBW

Compartment 64

136.8 Acres



TIMBER SALE INFORMATION

Northside Notch (12-027-16)

Dickinson County (Advertised Price \$142,278.70)

SALE NOTE: Sugar Maple quality is high.

A timber sale contract for this lump sum, sealed bid timber sale will be awarded to the responsible bidder offering the highest sealed bid price. Bids must be at or above the following advertised price for each species:

<u>PRODUCTS & SPECIES</u>	<u>ESTIMATED UNITS*</u>	<u>ADVERTISED PRICE</u>
Sawtimber		
Basswood	99.70 MBF	\$ 212.00 / MBF
Sugar Maple	131.90 MBF	\$ 567.00 / MBF
Pulpwood		
Balsam Fir	3.00 Cords	\$ 18.65 / Cord
Basswood	283.00 Cords	\$ 14.35 / Cord
Mixed Hardwood	1,184.00 Cords	\$ 35.45 / Cord
Quaking Aspen	6.00 Cords	\$ 44.20 / Cord

* The total volume is statistically estimated within plus (+) or minus (-) 11.50 percent. The estimated units are final and not subject to adjustment. Prospective bidders are urged to examine this timber and to make their own estimates of quantity and quality.

BOND AND PAYMENT SCHEDULE:

1. A bond in the amount of \$7,114.00 to insure faithful performance of the conditions of the contract will be deposited by the successful bidder within 21 days of the sale award.
2. Cutting in any sale or unit without the required advance payment would be considered a trespass.
3. Total payment must be paid in advance or according to the following schedule:
 - (a) Ten percent (10%) of the sale value must be paid within 21 days of the sale award.
 - (b) The 10% down payment will be credited towards the first unit cut.
4. If no cutting takes place, the 10% down payment will not be refunded.
5. Operations on the contract issued will terminate on 06/30/2020.

Description of Timber by Payment Unit (PU)

PU	MARKET GROUP	PRODUCT	QUANTITY	UNIT	ACRES	ADVERTISE PRICE
1	Balsam Fir	Pulpwood	3.0	Cords	7.5	\$5,681.70
	Basswood		3.0	Cords		
	Mixed Hardwood		150.0	Cords		
	<i>Paper Birch</i>	<i>Sawtimber</i>	1.7	<i>MBF</i>		
	<i>Red Maple</i>		5.8	<i>MBF</i>		
	<i>Yellow Birch</i>		1.0	<i>MBF</i>		
	<i>Paper Birch</i>	<i>Pulpwood</i>	5.0	<i>Cords</i>		
	<i>Red Maple</i>		89.0	<i>Cords</i>		
	<i>Sugar Maple</i>		23.0	<i>Cords</i>		
	<i>Yellow Birch</i>		16.0	<i>Cords</i>		
	Quaking Aspen		6.0	Cords		
2	Basswood	Sawtimber	10.6	MBF	21.6	\$14,571.90
	Sugar Maple		14.1	MBF		
	Basswood	Pulpwood	30.0	Cords		
	Mixed Hardwood		110.0	Cords		
	<i>Sugar Maple</i>		109.0	<i>Cords</i>		
	<i>Yellow Birch</i>		1.0	<i>Cords</i>		
3	Basswood	Sawtimber	13.0	MBF	26.4	\$17,825.10
	Sugar Maple		17.2	MBF		
	Basswood	Pulpwood	37.0	Cords		
	Mixed Hardwood		135.0	Cords		
	<i>Sugar Maple</i>		133.0	<i>Cords</i>		
	<i>Yellow Birch</i>		2.0	<i>Cords</i>		
4	Basswood	Sawtimber	18.3	MBF	36.9	\$24,954.95
	Sugar Maple		24.0	MBF		
	Basswood	Pulpwood	51.0	Cords		
	Mixed Hardwood		190.0	Cords		
	<i>Sugar Maple</i>		188.0	<i>Cords</i>		
	<i>Yellow Birch</i>		2.0	<i>Cords</i>		
5	Basswood	Sawtimber	7.5	MBF	15.3	\$10,326.45
	Sugar Maple		10.0	MBF		
	Basswood	Pulpwood	21.0	Cords		
	Mixed Hardwood		78.0	Cords		
	<i>Sugar Maple</i>		77.0	<i>Cords</i>		
	<i>Yellow Birch</i>		1.0	<i>Cords</i>		
6	Basswood	Sawtimber	15.3	MBF	31.1	\$21,007.30
	Sugar Maple		20.3	MBF		
	Basswood	Pulpwood	43.0	Cords		
	Mixed Hardwood		159.0	Cords		
	<i>Sugar Maple</i>		157.0	<i>Cords</i>		
	<i>Yellow Birch</i>		2.0	<i>Cords</i>		
7	Basswood	Sawtimber	17.4	MBF	35.3	\$23,813.95
	Sugar Maple		23.0	MBF		
	Basswood	Pulpwood	49.0	Cords		
	Mixed Hardwood		180.0	Cords		
	<i>Sugar Maple</i>		178.0	<i>Cords</i>		
	<i>Yellow Birch</i>		2.0	<i>Cords</i>		
8	Basswood	Sawtimber	17.6	MBF	35.7	\$24,097.35
	Sugar Maple		23.3	MBF		
	Basswood	Pulpwood	49.0	Cords		
	Mixed Hardwood		182.0	Cords		
	<i>Sugar Maple</i>		180.0	<i>Cords</i>		
	<i>Yellow Birch</i>		2.0	<i>Cords</i>		
TOTAL:			231.6	MBF		

TOTAL:	1,476.0	Cords
--------	---------	-------

Sale Specific Conditions & Requirements

Sale Name: Northside Notch

Sale Number: 12-027-16 Seq#: 1

1 - Sale Area

1.2 - Boundaries

1.2.1 - Painted boundaries (1/14)

The sale boundary and Payment Unit boundaries are marked and identified by blue, red and yellow paint. Exterior sale boundary lines against private property are marked with blue paint. Exterior sale boundary lines against state are marked with red paint. Interior Payment Unit boundaries are marked with yellow paint. The painted boundary line trees are not Included Timber and are to be protected unless marked with orange paint.

2 - Timber Specifications

2.1 - Included Timber

2.1.1 - Clearcut unit(s) with unmerchantable trees (6/14)

Within Payment Unit(s) #1, cut all trees that are two (2) inches or more at DBH except Cedar and Hemlock. In addition, leave all submerchantable conifers.

2.1.3 - Cut tree marked unit(s) (12/08)

Within Payment Unit(s) #'s 2-8, all trees are designated for cutting when marked with orange paint above and below stump height, regardless of merchantability.

3 - Payments

3.3 - Pre-measured Sales

3.3.4 - Dividing payment units (7/14)

Payment Unit(s) may be divided at the request of the Purchaser and upon approval of the Unit Manager. Dividing Payment Units is a contract modification which requires a Timber Sale Contract Supplement. There will be only one division per Payment Unit.

3.4 - Damaged Timber

3.4.1 - Damaged timber (6/14)

General Condition and Requirement 3.4 Damaged Timber, defines liquidated damages for undesignated live merchantable trees which are cut or injured. No damage is acceptable to merchantable trees. Within the sale area, if more than 10% of trees (> 4.5" DBH) within a specified area of the sale are damaged, liquidated damages will be assessed for all trees damaged. Rates will be in accordance with General Condition and Requirement 3.4 Damaged Timber.

4 - Transportation

4.1 - Construction

4.1.6 - Road construction (1/09)

Construction of new roads or improvements of existing roads shall be done in such a way as to minimize the environmental and visual impacts. Merchantable trees shall be cut and utilized unless otherwise directed. Non-merchantable trees shall be severed and laid flat on the ground. Slash shall be scattered, and not left in windrows and kept a minimum of 10 feet back from the road edge. Stumps shall be set upright, not left on edge, and be moved at least 10 feet away from the road edge. Disturbed soil shall be feathered into the woods and not left in berms or windrows.

4.1.7 - Road closure (10/11)

All new roads built into the sale must be blocked to vehicle traffic upon completion of the sale. Overgrown roads that are reopened shall be considered new roads.

4.3 - Public Right-of-Way

4.3.2 - County R-O-W (12/06)

The county must be contacted prior to operating near the county road R-O-W. This applies to the Lantz road.

5 - Operations

5.1 - Notification

5.1.1 - Pre-sale conference (10/11)

A pre-sale conference between the Purchaser and sale administrator is required prior to beginning any operations. The Unit Manager or his/her representative must be contacted at least 10 days in advance to schedule the conference.

5.2 - Conduct of Operations

5.2.1 - Slash

5.2.1.13 - Dispose of slash as directed (12/05)

Slash is to be disposed of as directed by the sale administrator.

5.2.2 - Hazard Trees/Snags

5.2.2.1 - Den trees (2/04)

Obvious hollow and/or den trees shall be protected and left standing unless they are a safety hazard.

5.2.3 - Operating Restrictions

5.2.3.3 - Bark slippage restriction (3/09)

Within Payment Unit(s) #'s 2-8, cutting and skidding are not permitted during the period of April 15 to July 15. This restriction is because of bark slippage.

5.4 - Soil Protection

5.4.1 - Rutting restriction, general (7/16)

Operations are to cease immediately if equipment and weather conditions result in rutting of roads and/or skid trails which is 12 inches or greater in depth and 50 feet in length. The Unit Manager or his/her representative may restrict hauling and/or skidding if ruts exceed the specified depth. With the Unit Manager or his/her representative's approval, the Purchaser may return to the area when the risk of rutting has decreased.



TIMBER SALE MAP

This information provided by authority of Part 525, 1994 PA 451, as amended.

Forest Management Unit		County	Mapped By	Date	Page	of
Crystal Falls		Dickinson	Church	09/27/2016	1	1
Township	Range	Section(s) and Subdivision(s)		Scale		
T42 & 43N	R27W	T43N R27W Sec 31: SESW		1:15,840		
		T42N R27W Sec 6: NW, W1/2NE				

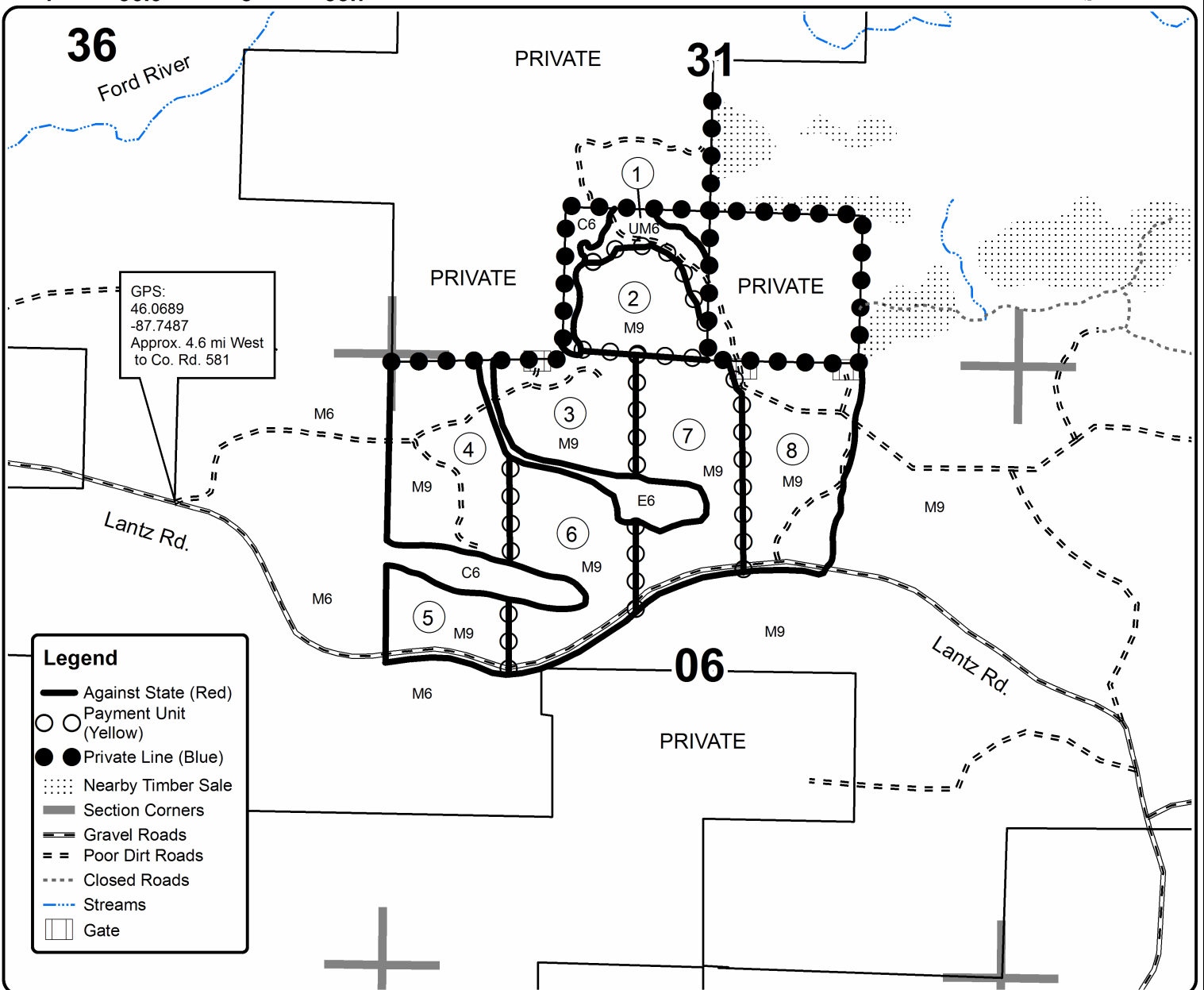
Cover Type				Density	
A = Aspen	H = Hemlock	N = Marsh	U = Upland Brush	0 = Non Stocked	5 = Pole Timber Medium
B = Paper Birch	J = Jack Pine	O = Oak	UM = Upland Mixed	1 = Seedling Sapling Poor	6 = Pole Timber Well
C = Cedar	L = Lowland Brush	P = Lowland Poplar	V = Bog or Marsh	2 = Seedling Sapling Medium	7 = Saw Timber Poor
D = Treed Bog	LM = Lowland Mixed	Q = Mixed Swamp Conifer	W = White Pine	3 = Seedling Sapling Well	8 = Saw Timber Medium
E = Swamp Hdwoods	M = Mpl, Bch, Brch	R = Red Pine	X = Non Stocked	4 = Pole Timber Poor	9 = Saw Timber Well
F = Spruce Fir	MC = Mixed Conifer	S = Black Spruce	Z = Water		
G = Grass	MD = Mixed Deciduous	T = Tamarack			

PU	Acres	PU	Acres
1	7.5	5	15.3
2	21.6	6	31.1
3	26.4	7	35.3
4	36.9	8	35.7

Northside Notch

Compartment 64

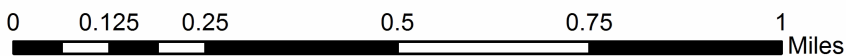
209.8 Acres



GPS:
46.0689
-87.7487
Approx. 4.6 mi West
to Co. Rd. 581

Legend

- Against State (Red)
- Payment Unit (Yellow)
- Private Line (Blue)
- Nearby Timber Sale
- Section Corners
- Gravel Roads
- Poor Dirt Roads
- Closed Roads
- Streams
- Gate



TIMBER SALE INFORMATION

DNR Road SBW (12-067-16)

Iron County (Advertised Price \$51,299.35)

SALE NOTE: The south half of Payment Unit 4 is a wet tamarack swamp. Prospective Purchasers are encouraged to evaluate this area for operability.

A recreation site such as a trail, pathway, or campground is within the sale area or the vicinity. Certain restrictions/specifications may be applicable including time restrictions.

A timber sale contract for this lump sum, sealed bid timber sale will be awarded to the responsible bidder offering the highest sealed bid price. Bids must be at or above the following advertised price for each species:

<u>PRODUCTS & SPECIES</u>	<u>ESTIMATED UNITS*</u>	<u>ADVERTISED PRICE</u>
Pulpwood		
Balsam Fir	366.00 Cords	\$ 11.65 / Cord
Mixed Hardwood	437.00 Cords	\$ 22.15 / Cord
Mixed Spruce	276.00 Cords	\$ 19.90 / Cord
Paper Birch	27.00 Cords	\$ 20.05 / Cord
Quaking Aspen	955.00 Cords	\$ 27.65 / Cord
Tamarack	408.00 Cords	\$ 12.05 / Cord

* The total volume is statistically estimated within plus (+) or minus (-) 9.35 percent. The estimated units are final and not subject to adjustment. Prospective bidders are urged to examine this timber and to make their own estimates of quantity and quality.

BOND AND PAYMENT SCHEDULE:

1. A bond in the amount of \$3,100.00 to insure faithful performance of the conditions of the contract will be deposited by the successful bidder within 21 days of the sale award.
2. Cutting in any sale or unit without the required advance payment would be considered a trespass.
3. Total payment must be paid in advance or according to the following schedule:
 - (a) Ten percent (10%) of the sale value must be paid within 21 days of the sale award.
 - (b) The 10% down payment will be credited towards the first unit cut.
4. If no cutting takes place, the 10% down payment will not be refunded.
5. Operations on the contract issued will terminate on 06/30/2020.

Description of Timber by Payment Unit (PU)

PU	MARKET GROUP	PRODUCT	QUANTITY	UNIT	ACRES	ADVERTISE PRICE
1	Balsam Fir	Pulpwood	42.0	Cords	20.2	\$10,365.70
	Mixed Hardwood		368.0	Cords		
	Mixed Spruce		20.0	Cords		
	Quaking Aspen		48.0	Cords		
2	Balsam Fir	Pulpwood	124.0	Cords	30.6	\$12,606.05
	Mixed Hardwood		30.0	Cords		
	Mixed Spruce		12.0	Cords		
	Quaking Aspen		371.0	Cords		
3	Balsam Fir	Pulpwood	137.0	Cords	33.9	\$13,955.35
	Mixed Hardwood		32.0	Cords		
	Mixed Spruce		13.0	Cords		
	Quaking Aspen		412.0	Cords		
4	Balsam Fir	Pulpwood	36.0	Cords	30.9	\$10,471.65
	Mixed Hardwood		5.0	Cords		
	Mixed Spruce		149.0	Cords		
	Paper Birch		20.0	Cords		
	Quaking Aspen		60.0	Cords		
	Tamarack		408.0	Cords		
5	Balsam Fir	Pulpwood	27.0	Cords	7.7	\$3,900.60
	Mixed Hardwood		2.0	Cords		
	Mixed Spruce		82.0	Cords		
	Paper Birch		7.0	Cords		
	Quaking Aspen		64.0	Cords		
TOTAL:			2,469.0	Cords		

Sale Specific Conditions & Requirements

Sale Name: DNR Road SBW

Sale Number: 12-067-16 Seq#: 2

1 - Sale Area

1.2 - Boundaries

1.2.1 - Painted boundaries (1/14)

The sale boundary and Payment Unit boundaries are marked and identified by blue and red paint. Exterior sale boundaries against private land are marked with blue paint. Exterior sale boundaries against state land are marked with double red paint dots. Interior Payment Unit boundaries are marked with double red paint slashes. Red painted trees designating an interior Payment Unit boundary may only be cut if the tree is a designated cut species, and when the adjacent Payment Unit has been paid.

2 - Timber Specifications

2.1 - Included Timber

2.1.2 - Clearcut unit(s) w/o unmerchantable trees (8/11)

Within Payment Unit(s) 1, cut all aspen, balsam, spruce, balsam fir, and red maple trees which meet minimum piece specifications in 2.2 Utilization (1 pulpstick tall and larger). Do not cut trees marked with orange paint.

Within Payment Unit(s) 2 and 3, cut all aspen, spruce, balsam fir, maple, jack pine, and tamarack trees which meet minimum piece specifications in 2.2 Utilization (1 pulpstick tall and larger). Do not cut trees marked with green paint.

Within Payment Unit(s) 4 - 6, cut all aspen, maple, white birch, spruce, balsam fir, and tamarack trees which meet minimum piece specifications in 2.2 Utilization (1 pulpstick tall and larger). Do not cut trees marked with green paint.

2.2 - Utilization

2.2.11 - Chipping restriction (9/14)

If chipping occurs on this sale, no woody debris present on the ground at the start of the sale may be chipped. Chip piles must be removed within 60 days of the sale expiration. In addition, after chip piles are removal, residual chip depth at the landing may not exceed 4 inches.

3 - Payments

3.4 - Damaged Timber

3.4.1 - Damaged timber (6/14)

General Condition and Requirement 3.4 Damaged Timber, defines liquidated damages for undesignated live merchantable trees which are cut or injured. In addition, extreme care should be taken to avoid damage to residual tree seedlings and saplings.

4 - Transportation

4.1 - Construction

4.1.6 - Road construction (1/09)

Improvements of existing roads shall be done in such a way as to minimize the environmental and visual impacts. Merchantable trees shall be cut and utilized unless otherwise directed. Non-merchantable trees shall be severed and laid flat on the ground. Slash shall be scattered, and not left in windrows. Stumps shall be set upright, not left on edge, and be moved at least 5 feet away from the road edge, except along the DNR Road - see spec 5.2.41. Disturbed soil shall be feathered into the woods and not left in berms or windrows.

4.1.12 - No new roads (1/12)

No new roads will be permitted. Short landing spurs may be permitted if deemed necessary.

4.2 - Maintenance

4.2.5 - Two wheel drive condition (2/04)

All existing trail roads on and adjacent to the sale area must be passable by two-wheel drive traffic for the duration of the sale.

5 - Operations

5.2 - Conduct of Operations

5.2.1 - Slash

5.2.1.8 - Slash height (12/08)

No slash may exceed 36 inches in height.

5.2.1.11 - Slash for reforestation (5/07)

To facilitate reforestation, the sale area shall be left with slash evenly distributed. Bunched tops within the cutting area shall be broken up and scattered. Stumps shall be cut low to the ground. Processing sites shall not be left with a compacted layer of slash; tops from these sites shall be hauled back into the cut area and scattered.

5.2.2 - Hazard Trees/Snags

5.2.2.1 - Den trees (2/04)

Obvious hollow and/or den trees shall be protected and left standing unless they are a safety hazard.

5.2.3 - Operating Restrictions

5.2.3.1 - Operating restrictions (9/11)

Within Payment Unit(s) 1 and 4, unless changed by written agreement, cutting, skidding, and hauling are not permitted from March 1 to December 15. This restriction is due to wet ground.

Within Payment Units 2, 3, and 5, cutting, skidding, and hauling are not permitted from March 1 to May 15. This restriction is to avoid spring breakup conditions.

5.2.38 - No decking against live trees (2/04)

Cut products may not be decked against unmarked or designated leave trees.

5.2.41 - Snowmobile trail protection (9/11)

The DNR Road is a snowmobile trail as shown on the Timber Sale Map. Do not cut or damage posts with orange trail markers or traffic control signs. Prior to December 1, the trail must be maintained and restored to a condition equal to or better than before logging operations. During the snowmobile season, a snow covered base must be left on the trail. No decking of forest products will be permitted along the snowmobile trail during the snowmobile season. The cleared shoulders of the DNR Road must be kept slash and stump free. Logging activity warning signs must be posted minimally 200 feet before the sale area at either end.

5.4 - Soil Protection

5.4.1 - Rutting restriction, general (7/16)

Operations are to cease immediately if equipment and weather conditions result in rutting of roads and/or skid trails which is 12 inches or greater in depth and 50 feet in length. The Unit Manager or his/her representative may restrict hauling and/or skidding if ruts exceed the specified depth. With the Unit Manager or his/her representative's approval, the Purchaser may return to the area when the risk of rutting has decreased.

5.8 - Protection of Endangered Species

5.8.5 - Protection of raptor nests (3/13)

All trees with raptor nests will be protected if found during harvesting operations. Notification will be made to the Unit Manager or his/her representative who will notify the Wildlife Biologist so an on-site evaluation and recommendation can be made, if necessary.



TIMBER SALE MAP

This information provided by authority of Part 525, 1994 PA 451, as amended.

Sale Number	Year
12-067 -16-01	2016

Forest Management Unit Crystal Falls	County Iron	Mapped By Rice	Date 9/30/16	Page 1	of 2
Township 44N	Range 33W	Section(s) and Subdivision(s) sec 10 N1/2NW sec 2 S1/2NE, N1/2SE, SESE, W1/2SW, SESW sec 3 SE1/4, S1/2SW	Scale 4 inches = 1 mile		

Cover Type

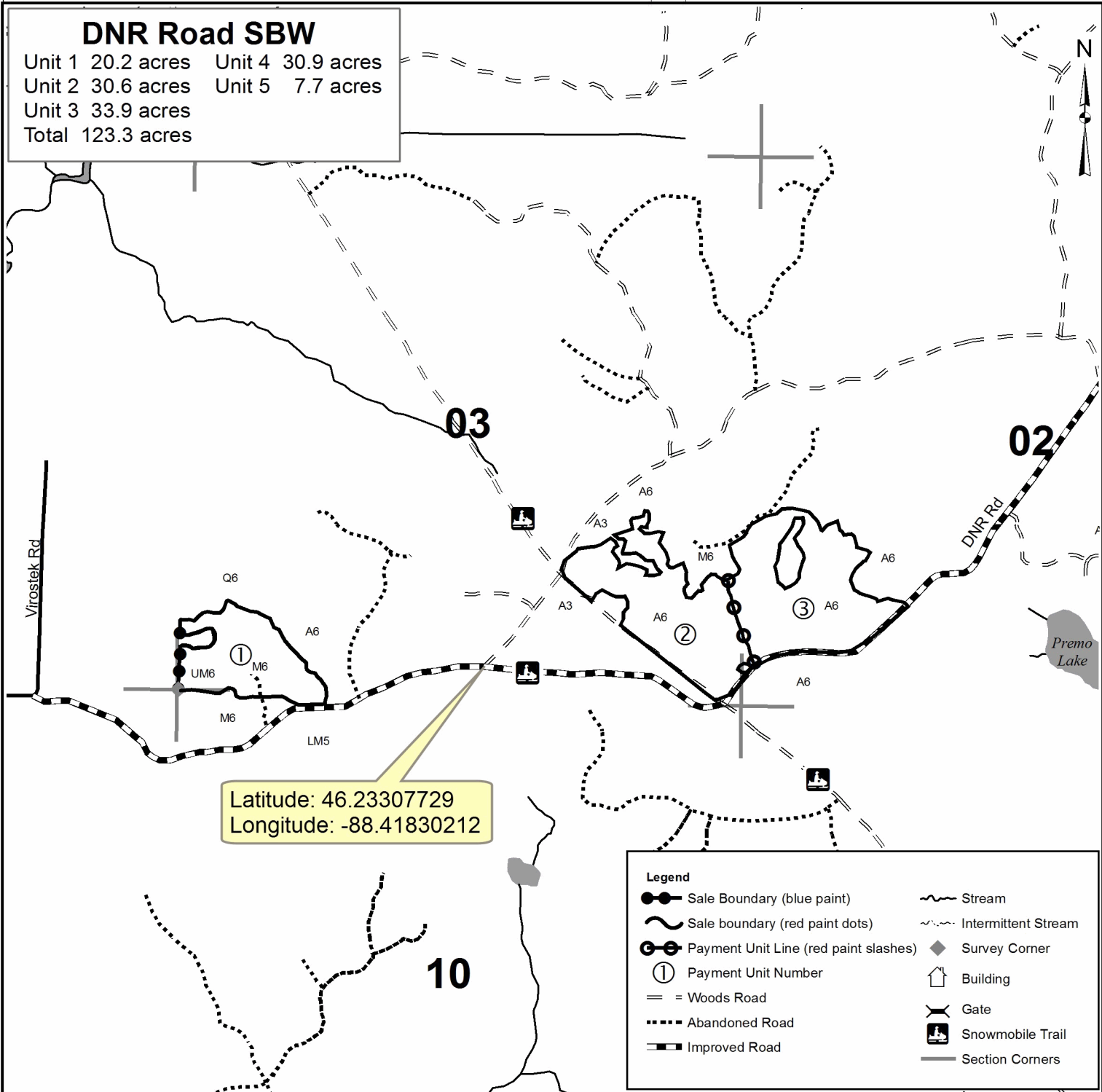
A = Aspen	H = Hemlock	N = Marsh	U = Upland Brush
B = Paper Birch	J = Jack Pine	O = Oak	UM = Upland Mixed
C = Cedar	L = Lowland Brush	P = Lowland Poplar	V = Bog or Marsh
D = Treed Bog	LM = Lowland Mixed	Q = Mixed Swamp Conifer	W = White Pine
E = Swamp Hdwoods	M = Mpl, Bch, Brch	R = Red Pine	X = Non Stocked
F = Spruce Fir	MC = Mixed Conifer	S = Black Spruce	Z = Water
G = Grass	MD = Mixed Deciduous	T = Tamarack	

Density

0 = Non Stocked	5 = Pole Timber Medium
1 = Seedling Sapling Poor	6 = Pole Timber Well
2 = Seedling Sapling Medium	7 = Saw Timber Poor
3 = Seedling Sapling Well	8 = Saw Timber Medium
4 = Pole Timber Poor	9 = Saw Timber Well

DNR Road SBW

Unit 1 20.2 acres	Unit 4 30.9 acres
Unit 2 30.6 acres	Unit 5 7.7 acres
Unit 3 33.9 acres	
Total 123.3 acres	



Legend	
	Sale Boundary (blue paint)
	Sale boundary (red paint dots)
	Payment Unit Line (red paint slashes)
	Payment Unit Number
	Woods Road
	Abandoned Road
	Improved Road
	Stream
	Intermittent Stream
	Survey Corner
	Building
	Gate
	Snowmobile Trail
	Section Corners



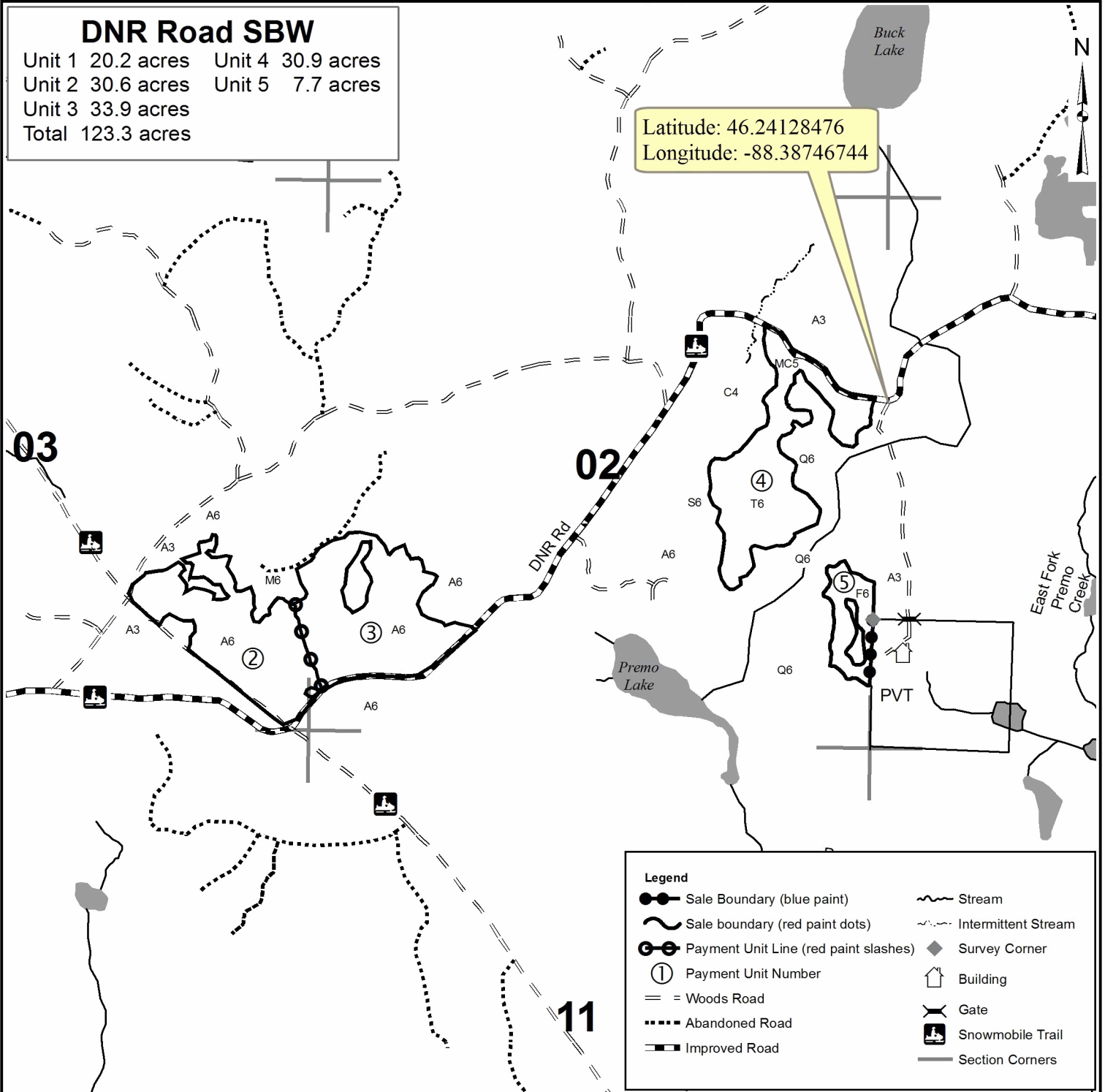
TIMBER SALE MAP

This information provided by authority of Part 525, 1994 PA 451, as amended.

Sale Number	Year
12-067 -16-01	2016

Forest Management Unit Crystal Falls	County Iron	Mapped By Rice	Date 9/30/16	Page 2	of 2
Township 44N	Range 33W	Section(s) and Subdivision(s) sec 2 S1/2NE, N1/2SE, SESE, W1/2SW, SESW sec 3 SE1/4, S1/2SW	Scale 4 inches = 1 mile		

Cover Type				Density	
A = Aspen	H = Hemlock	N = Marsh	U = Upland Brush	0 = Non Stocked	5 = Pole Timber Medium
B = Paper Birch	J = Jack Pine	O = Oak	UM = Upland Mixed	1 = Seedling Sapling Poor	6 = Pole Timber Well
C = Cedar	L = Lowland Brush	P = Lowland Poplar	V = Bog or Marsh	2 = Seedling Sapling Medium	7 = Saw Timber Poor
D = Treed Bog	LM = Lowland Mixed	Q = Mixed Swamp Conifer	W = White Pine	3 = Seedling Sapling Well	8 = Saw Timber Medium
E = Swamp Hdwoods	M = Mpl, Bch, Brch	R = Red Pine	X = Non Stocked	4 = Pole Timber Poor	9 = Saw Timber Well
F = Spruce Fir	MC = Mixed Conifer	S = Black Spruce	Z = Water		
G = Grass	MD = Mixed Deciduous	T = Tamarack			



Camp 9 Complex (12-001-16)
 ; Dickinson COUNTY

In response to the notice of sale to be held 8:30 a.m. (local time) on April 26, 2017, I am hereby submitting my sealed bid (firm offer) for the following forest products to be cut. Bids for individual species must be at or above the advertised price. All non-responsive bid forms may be rejected.

<u>PRODUCTS & SPECIES</u>	<u>ESTIMATED VOLUME*</u>	<u>ADVERTISED PRICE</u>	<u>BID PRICE</u>
Sawtimber			
Basswood	169.30 MBF	\$ 198.00/MBF	\$ _____
Sugar Maple	41.10 MBF	\$ 532.00/MBF	\$ _____
Pulpwood			
Balsam Fir	252.00 Cords	\$ 17.50/Cord	\$ _____
Basswood	386.00 Cords	\$ 13.45/Cord	\$ _____
Mixed Hardwood	1,642.00 Cords	\$ 33.25/Cord	\$ _____
Mixed Spruce	709.00 Cords	\$ 29.85/Cord	\$ _____
Quaking Aspen	2,061.00 Cords	\$ 41.45/Cord	\$ _____
Tamarack	102.00 Cords	\$ 18.10/Cord	\$ _____

*These estimated volumes are final and not subject to adjustment. Prospective bidders are urged to examine this timber and to make their own estimates of quantity and quality.

I understand that any or all bids may be rejected. All bids must be signed and all bid items must be bid or the bid form may be rejected. I also understand that consideration and awarding a contract will be based upon my past performance and ability to complete the contract based upon equipment and staffing subject to my control.

FEDERAL ID: ____ - ____ - ____ or SOCIAL SECURITY NUMBER: ____ - ____ - ____
 Company or individual bidding: _____
 Company representative's name: _____
 Address: _____
 City: _____ State: _____ Zip: _____

IF AVAILABLE, PLEASE PLACE THE PERSONALIZED LABEL FROM YOUR PROSPECTUS IN THE ABOVE BOX.

Individual or company representative's signature: _____ Date: _____

Phone number : _____ Email (optional): _____

THE WINNING BIDDER MUST COMPLETE THE VERIFICATION OF WORKER'S DISABILITY COMPENSATION ACT COMPLIANCE (ON REVERSE SIDE IF DOUBLE SIDED) WITHIN 21 DAYS OF SALE AWARD DATE

Smiling Porky SBW (12-026-16)
 ; Dickinson COUNTY

In response to the notice of sale to be held 8:30 a.m. (local time) on April 26, 2017, I am hereby submitting my sealed bid (firm offer) for the following forest products to be cut. Bids for individual species must be at or above the advertised price. All non-responsive bid forms may be rejected.

<u>PRODUCTS & SPECIES</u>	<u>ESTIMATED VOLUME*</u>	<u>ADVERTISED PRICE</u>	<u>BID PRICE</u>
Sawtimber			
Red Maple	28.70 MBF	\$ 281.00/MBF	\$ _____
Sugar Maple	26.00 MBF	\$ 496.00/MBF	\$ _____
Pulpwood			
Balsam Fir	174.00 Cords	\$ 16.30/Cord	\$ _____
Balsam Poplar	108.00 Cords	\$ 38.70/Cord	\$ _____
Basswood	37.00 Cords	\$ 12.55/Cord	\$ _____
Black Spruce	250.00 Cords	\$ 27.85/Cord	\$ _____
Mixed Hardwood	1,366.00 Cords	\$ 31.00/Cord	\$ _____
N. White Cedar	2.00 Cords	\$ 27.85/Cord	\$ _____
Quaking Aspen	247.00 Cords	\$ 38.70/Cord	\$ _____
Tamarack	19.00 Cords	\$ 16.90/Cord	\$ _____
White Spruce	300.00 Cords	\$ 27.85/Cord	\$ _____

*The volumes are statistically estimated within plus (+) or minus (-) 10.48 percent. These estimated volumes are final and not subject to adjustment. Prospective bidders are urged to examine this timber and to make their own estimates of quantity and quality.

I understand that any or all bids may be rejected. All bids must be signed and all bid items must be bid or the bid form may be rejected. I also understand that consideration and awarding a contract will be based upon my past performance and ability to complete the contract based upon equipment and staffing subject to my control.

FEDERAL ID: _____ or SOCIAL SECURITY NUMBER: _____

Company or individual bidding: _____

Company representative's name: _____

Address: _____

City: _____ State: _____ Zip: _____

IF AVAILABLE, PLEASE PLACE THE PERSONALIZED LABEL FROM YOUR PROSPECTUS IN THE ABOVE BOX.

Individual or company representative's signature: _____ Date: _____

Phone number : _____ Email (optional): _____

THE WINNING BIDDER MUST COMPLETE THE VERIFICATION OF WORKER'S DISABILITY COMPENSATION ACT COMPLIANCE (ON REVERSE SIDE IF DOUBLE SIDED) WITHIN 21 DAYS OF SALE AWARD DATE



FOR DEPARTMENT USE ONLY	
Sale Number (XX - XXX - XX - XX)	
Forest Management Unit:	

TIMBER SALE VERIFICATION OF WORKER'S DISABILITY COMPENSATION ACT COMPLIANCE

As required by Act 317, P.A. 1969 (Worker's Compensation) and
Part 5 of Act 451 of 1994, as amended.

VERIFICATION OF WORKER'S DISABILITY COMPENSATION ACT COMPLIANCE

- This verification must be completed and submitted within 21 days of contract award and prior to the issuance of the timber sale contract.
- In addition, if boxes 2B or 2C are checked, then Notice of Exclusion or Certificate of Insurance must be submitted within twenty-one (21) days of the contract award and prior to the issuance of the timber sale contract.
- All information must be typed or printed except for written signatures.

Please Check Appropriate Categories:

1. My business is organized as (you **must** check one of the boxes below):
 - A. Sole Proprietorship (individual)
 - B. Partnership
 - C. Corporation
2. You **must** check one of the boxes below:
 - A. I certify my business is a sole proprietorship and it has no employees but the sole proprietor. I am not subject to the Worker's Compensation Laws.
 - B. I certify my business has satisfied its obligation to the Worker's Compensation Act through the use of an approved Notice of Exclusion (BWC-337, Rev. 5/96). I will provide a copy of the Notice of Exclusion within 21 days of the contract award. (For questions or a copy of the BWC-337, please call the Worker's Compensation Bureau at 517-322-1195).
 - C. I certify my business has a Worker's Compensation Policy. I will provide an original Certificate of Insurance within twenty-one (21) days of the contract award.
3. If you have checked item 2(A) or 2(B), you **must** indicate the number of **both** full-time and part-time employees, other than yourself, including family members and active partners (if none, you must enter "0").

_____ Full-time Employees

_____ Part-time Employees

Name of Business		Federal ID (or) Social Security No.	
Address		Telephone ()	
City	State	ZIP	

I hereby certify that the above information is true and correct. I agree to notify the Michigan DNR of any changes that occur in factors affecting my coverage during any of my present and future operations.

Signature of Owner or Authorized Representative

Title

Date

Please complete the "SEALED BID" information on the next page

Northside Notch (12-027-16)
 ; Dickinson COUNTY

In response to the notice of sale to be held 8:30 a.m. (local time) on April 26, 2017, I am hereby submitting my sealed bid (firm offer) for the following forest products to be cut. Bids for individual species must be at or above the advertised price. All non-responsive bid forms may be rejected.

<u>PRODUCTS & SPECIES</u>	<u>ESTIMATED VOLUME*</u>	<u>ADVERTISED PRICE</u>	<u>BID PRICE</u>
Sawtimber			
Basswood	99.70 MBF	\$ 212.00/MBF	\$ _____
Sugar Maple	131.90 MBF	\$ 567.00/MBF	\$ _____
Pulpwood			
Balsam Fir	3.00 Cords	\$ 18.65/Cord	\$ _____
Basswood	283.00 Cords	\$ 14.35/Cord	\$ _____
Mixed Hardwood	1,184.00 Cords	\$ 35.45/Cord	\$ _____
Quaking Aspen	6.00 Cords	\$ 44.20/Cord	\$ _____

*The volumes are statistically estimated within plus (+) or minus (-) 11.50 percent. These estimated volumes are final and not subject to adjustment. Prospective bidders are urged to examine this timber and to make their own estimates of quantity and quality.

I understand that any or all bids may be rejected. All bids must be signed and all bid items must be bid or the bid form may be rejected. I also understand that consideration and awarding a contract will be based upon my past performance and ability to complete the contract based upon equipment and staffing subject to my control.

FEDERAL ID: _____ or SOCIAL SECURITY NUMBER: _____

Company or individual bidding: _____

Company representative's name: _____

Address: _____

City: _____ State: _____ Zip: _____

IF AVAILABLE, PLEASE PLACE THE PERSONALIZED LABEL FROM YOUR PROSPECTUS IN THE ABOVE BOX.

Individual or company representative's signature: _____ Date: _____

Phone number : _____ Email (optional): _____

THE WINNING BIDDER MUST COMPLETE THE VERIFICATION OF WORKER'S DISABILITY COMPENSATION ACT COMPLIANCE (ON REVERSE SIDE IF DOUBLE SIDED) WITHIN 21 DAYS OF SALE AWARD DATE



FOR DEPARTMENT USE ONLY
Sale Number (XX - XXX - XX - XX)
Forest Management Unit:

TIMBER SALE VERIFICATION OF WORKER'S DISABILITY COMPENSATION ACT COMPLIANCE

*As required by Act 317, P.A. 1969 (Worker's Compensation) and
Part 5 of Act 451 of 1994, as amended.*

VERIFICATION OF WORKER'S DISABILITY COMPENSATION ACT COMPLIANCE

- This verification must be completed and submitted within 21 days of contract award and prior to the issuance of the timber sale contract.
- In addition, if boxes 2B or 2C are checked, then Notice of Exclusion or Certificate of Insurance must be submitted within twenty-one (21) days of the contract award and prior to the issuance of the timber sale contract.
- All information must be typed or printed except for written signatures.

Please Check Appropriate Categories:

1. My business is organized as (you **must** check one of the boxes below):
 - A. Sole Proprietorship (individual)
 - B. Partnership
 - C. Corporation
2. You **must** check one of the boxes below:
 - A. I certify my business is a sole proprietorship and it has no employees but the sole proprietor. I am not subject to the Worker's Compensation Laws.
 - B. I certify my business has satisfied its obligation to the Worker's Compensation Act through the use of an approved Notice of Exclusion (BWC-337, Rev. 5/96). I will provide a copy of the Notice of Exclusion within 21 days of the contract award. (For questions or a copy of the BWC-337, please call the Worker's Compensation Bureau at 517-322-1195).
 - C. I certify my business has a Worker's Compensation Policy. I will provide an original Certificate of Insurance within twenty-one (21) days of the contract award.
3. If you have checked item 2(A) or 2(B), you **must** indicate the number of **both** full-time and part-time employees, other than yourself, including family members and active partners (if none, you must enter "0").

_____ Full-time Employees

_____ Part-time Employees

Name of Business		Federal ID (or) Social Security No.	
Address		Telephone ()	
City	State	ZIP	

I hereby certify that the above information is true and correct. I agree to notify the Michigan DNR of any changes that occur in factors affecting my coverage during any of my present and future operations.

Signature of Owner or Authorized Representative

Title

Date

Please complete the "SEALED BID" information on the next page

FORM

DNR Road SBW (12-067-16)

; Iron COUNTY

In response to the notice of sale to be held 8:30 a.m. (local time) on April 26, 2017, I am hereby submitting my sealed bid (firm offer) for the following forest products to be cut. Bids for individual species must be at or above the advertised price. All non-responsive bid forms may be rejected.

<u>PRODUCTS & SPECIES</u>	<u>ESTIMATED VOLUME*</u>	<u>ADVERTISED PRICE</u>	<u>BID PRICE</u>
Pulpwood			
Balsam Fir	366.00 Cords	\$ 11.65/Cord	\$ _____
Mixed Hardwood	437.00 Cords	\$ 22.15/Cord	\$ _____
Mixed Spruce	276.00 Cords	\$ 19.90/Cord	\$ _____
Paper Birch	27.00 Cords	\$ 20.05/Cord	\$ _____
Quaking Aspen	955.00 Cords	\$ 27.65/Cord	\$ _____
Tamarack	408.00 Cords	\$ 12.05/Cord	\$ _____

*The volumes are statistically estimated within plus (+) or minus (-) 9.35 percent. These estimated volumes are final and not subject to adjustment. Prospective bidders are urged to examine this timber and to make their own estimates of quantity and quality.

I understand that any or all bids may be rejected. All bids must be signed and all bid items must be bid or the bid form may be rejected. I also understand that consideration and awarding a contract will be based upon my past performance and ability to complete the contract based upon equipment and staffing subject to my control.

FEDERAL ID: ___ - ___ - ___ or SOCIAL SECURITY NUMBER: ___ - ___ - ___

Company or individual bidding: _____

Company representative's name: _____

Address: _____

City: _____ State: _____ Zip: _____

IF AVAILABLE, PLEASE PLACE THE PERSONALIZED LABEL FROM YOUR PROSPECTUS IN THE ABOVE BOX.

Individual or company representative's signature: _____ Date: _____

Phone number : _____ Email (optional): _____

THE WINNING BIDDER MUST COMPLETE THE VERIFICATION OF WORKER'S DISABILITY COMPENSATION ACT COMPLIANCE (ON REVERSE SIDE IF DOUBLE SIDED) WITHIN 21 DAYS OF SALE AWARD DATE



FOR DEPARTMENT USE ONLY
Sale Number (XX – XXX – XX – XX)
Forest Management Unit:

TIMBER SALE VERIFICATION OF WORKER'S DISABILITY COMPENSATION ACT COMPLIANCE

*As required by Act 317, P.A. 1969 (Worker's Compensation) and
Part 5 of Act 451 of 1994, as amended.*

VERIFICATION OF WORKER'S DISABILITY COMPENSATION ACT COMPLIANCE

- This verification must be completed and submitted within 21 days of contract award and prior to the issuance of the timber sale contract.
- In addition, if boxes 2B or 2C are checked, then Notice of Exclusion or Certificate of Insurance must be submitted within twenty-one (21) days of the contract award and prior to the issuance of the timber sale contract.
- All information must be typed or printed except for written signatures.

Please Check Appropriate Categories:

1. My business is organized as (you **must** check one of the boxes below):
 - A. Sole Proprietorship (individual)
 - B. Partnership
 - C. Corporation

2. You **must** check one of the boxes below:
 - A. I certify my business is a sole proprietorship and it has no employees but the sole proprietor. I am not subject to the Worker's Compensation Laws.
 - B. I certify my business has satisfied its obligation to the Worker's Compensation Act through the use of an approved Notice of Exclusion (BWC-337, Rev. 5/96). I will provide a copy of the Notice of Exclusion within 21 days of the contract award. (For questions or a copy of the BWC-337, please call the Worker's Compensation Bureau at 517-322-1195).
 - C. I certify my business has a Worker's Compensation Policy. I will provide an original Certificate of Insurance within twenty-one (21) days of the contract award.

3. If you have checked item 2(A) or 2(B), you **must** indicate the number of **both** full-time and part-time employees, other than yourself, including family members and active partners (if none, you must enter "0").

_____ Full-time Employees

_____ Part-time Employees

Name of Business		Federal ID (or) Social Security No.	
Address		Telephone ()	
City	State	ZIP	

I hereby certify that the above information is true and correct. I agree to notify the Michigan DNR of any changes that occur in factors affecting my coverage during any of my present and future operations.

Signature of Owner or Authorized Representative

Title

Date

Please complete the "SEALED BID" information on the next page