



**DEPARTMENT OF NATURAL RESOURCES  
STATE OF MICHIGAN**

**TIMBER SALE PROSPECTUS #5913**

SCHEDULED SALE DATE AND TIME: 8:30 a.m. (local time) on July 26, 2017.

LOCATION: CRYSTAL FALLS MGT UNIT, 1420 US-2 WEST, CRYSTAL FALLS, MI 49920.

PROSPECTUS NOTE: \*\*\*PLEASE NOTE - BID OPENINGS ARE NOW HELD AT 8:30 A.M. (LOCAL TIME)\*\*\*

The bidder is advised to inspect the sale area and review the location, estimated volumes, operating costs and contract terms of proposed sales. Please be aware that some landowners may request 60 days or more notice for access across their land.

Notice is hereby given that bids will be received by the Unit Manager, CRYSTAL FALLS MANAGEMENT UNIT, for certain timber on the following described lands:

Floodwood Mix (12-053-17)

Dickinson County, Advertised Price \$129,391.70, 161.0 Acres, Aspen, Hardwood.

Parlamee Mix (12-054-17)

Dickinson County, Advertised Price \$98,098.95, 135.5 Acres, Aspen, Hardwood.

Big Wheel Contract (12-050-16)

Dickinson County, Advertised Price \$136,250.90, 319.8 Acres, Aspen, Hardwood.

Sky Net (12-062-16)

Dickinson County, Advertised Price \$205,459.25, 252.5 Acres, Hardwood, Red Pine.

Grouse Covey SBW (12-063-16)

Dickinson County, Advertised Price \$19,773.60, 22.4 Acres, Aspen, Hardwood.

## BID INSTRUCTIONS (VER. 09/02/2016):

### 1. Scheduled Bid Location, Date, and Time (2/11)

Bids must be received by the Unit Manager, CRYSTAL FALLS OFFICE, 1420 US-2 WEST, CRYSTAL FALLS, MI 49920, no later than 8:30 a.m. (local time) on July 26, 2017. For further information concerning this sale, contact Dan McNamee at 906-875-6622 extension 105.

### 2. Bidder's Qualifications (5/16)

Purchaser shall obtain workers compensation insurance to cover claims under Michigan's Worker's Disability Compensation Act of 1969 or similar employee benefit act of any other state applicable to an employee. If all or part of a timber sale was prepared by a private contractor, the contractor and that contractor's company are not permitted to bid on the timber sale contract. Bids will not be accepted from individuals or companies appearing on the DNR/FRD No-Bid List. This list contains the names of purchasers who previously failed to execute a contract within 21-days or who have a history of poor performance.

### 3. Preparation of Sealed Bids (5/16)

Bid Forms may be completed online thru Michigan DNR Timber Sale Online Bidding (OLB) at [www.michigan.gov/timberbidding](http://www.michigan.gov/timberbidding) or by completing the hardcopy Bid Form found in the Timber Sale Prospectus. Hardcopy Bid Forms shall be manually signed in ink. Registration in OLB is considered your 'signature' for all bids submitted thru that system. Bid prices must be entered for each species and product in the Bid Price column for all material subject to bidding and all fill-in blanks must be completed. If erasures or other changes appear on the hardcopy Bid Form, each erasure or change must be initialed by the person signing the bid.

### 4. Submission of Sealed Bids (5/16)

Bid forms may be obtained from the Unit Manager or thru OLB. Bids may be submitted hardcopy or thru OLB. All hardcopy bids must be submitted on the bid form and in an envelope clearly identified as described in this section. NOTE: Only one bid form per bid envelope. Sealed bids must be submitted to the Unit office designated in the prospectus and must be submitted at or prior to the time established in the prospectus. The envelope should show on the outside (a) the sale name or number and (b) the date and time of bid opening, as shown in the prospectus. Bids received after the time specified in the sale prospectus are late bids and will be rejected.

It is possible for a bidder to submit multiple bids on a single sale. For example, a bid may be submitted hardcopy and a bid may be submitted thru OLB. Or, two bidders from the same company could both submit bids on the same sale. If this were to happen, the State would accept all bids received and award the contract accordingly. All bidding and contractual requirements would apply to all bids received.

### 5. Public Opening of Sealed Bids (7/16)

If conditions permit, the sealed bids will be publicly opened and posted at the time and place set in the prospectus.

If a bidder, present at a bid opening, has submitted bids on more than one sale, that bidder may withdraw their unopened bid envelopes or announce the withdrawal of their online bid after being declared the successful bidder on one sale.

### 6. Award of Contract (1/11)

Award of the contract will be made to the Bidder whose bid, conforming to the prospectus, is most advantageous to the State of Michigan on the basis of total value at rates bid for the estimated quantities. The State reserves the right to reject any bid or waive any minor irregularity in bids received. A written award mailed (or otherwise furnished) to the successful Bidder shall be deemed to result in a binding contract without further action by either party.

### 7. Down Payment (1/11)

The Bidder to whom award is made must make a down payment within 21 days of the sale award. The amount of the down payment will be calculated as shown in the Bond and Payment Schedule of this prospectus. Only cash may be used to meet this requirement.

### 8. Performance Security (1/11)

As guarantee of faithful performance, a cash bond, certificate of deposit, surety bond or irrevocable letter of credit (LOC) is required within 21 days of the sale award. The amount of the performance security is shown in the Bond and

Payment Schedule of this prospectus. If an LOC or surety is used, the coverage must extend for at least 6 months beyond the contract expiration.

#### 9. Timber Sale Contract (9/14)

Additional conditions and requirements common to all timber sales are listed on the timber sale contract (R4031) and are available on line at [www.michigan.gov/timber](http://www.michigan.gov/timber). Contact the Unit Manager for additional information or a sample contract. Within 21 days of the date of the award letter, the bidder must sign the contract and provide the required down payment, performance security, and verification of worker's disability compensation. The down payment and performance security shall be in accordance with the provisions of the timber sale contract, in the sums stated in this prospectus. If these actions are not taken, then the Bidder, the Bidder's corporation, and the corporation's principals may not be permitted to bid on State timber sales for a period of 1 year. In addition, the Bidder certifies that if awarded this contract, the Bidder will complete the timber sale contract in accordance with its terms and any modifications thereof including requirements to purchase, cut, and remove the included timber by the expiration date.

#### 10. Disclaimer of Estimates and Bidder's Warranty of Inspection (7/16)

Before submitting this bid, the Bidder is advised and cautioned to inspect the sale area, review the requirements of the sale contract, and take other steps as may be reasonably necessary to ascertain the location, estimated volumes, construction estimates, and operating costs of the proposed sale. Failure to do so will not relieve the Bidder from responsibility for completing the contract.

The Bidder warrants that this bid is submitted solely on the basis of the Bidder's examination and inspection of the quality and quantity of the timber offered for sale and the Bidder's opinion of the value thereof and the costs of recovery. No reliance should be placed on the State of Michigan's estimates of timber quality, quantity or costs of recovery. Bidder further acknowledges that the State of Michigan: (i) expressly disclaims any warranty of fitness of timber for any purpose; (ii) offers this timber as is without any warranty of quality (merchantability) or quantity and (iii) expressly disclaims any warranty as to the quantity or quality of timber sold.

#### 11. Certification and Chain-of-Custody (10/14)

Unless otherwise indicated in the contract under section 7 – Other Conditions of the Sale Specific Conditions & Requirements, the area encompassed by this timber sale is certified to the standards of the Forest Stewardship Council (FSC) - Certificate #SCS-FM/COC-00090N and the Sustainable Forestry Initiative (SFI) - Certificate # NSF-SFIS-5Y031-SF5. Forest products from this sale may be delivered to the mill as "FSC 100% and / or SFI certified" as long as the contractor hauling the forest products is chain-of-custody (COC) certified or covered under a COC certificate from the destination mill. The purchaser is responsible for maintaining COC after leaving the sale area.

#### 12. Good Neighbor Authority (GNA) Requirements (7/16)

If the name of this timber sales contains the acronym GNA, it is authorized by the Good Neighbor Authority (GNA) and covered by various agreements between the U.S. Forest Service and the State. The timber sale occurs on federal land and the following conditions apply:

GNA contracts on US Forest Service land will not be awarded to purchasers on the Federal list of excluded parties. The System for Award Management (SAM) will be checked for active excluded parties prior to award of contract. In addition, the Bidder to whom award is made must complete an Assurance Regarding Felony Conviction or Tax Delinquent Status for Corporate Applicants (AD-3031).

#### 13. Good Neighbor Authority (GNA) Requirements, con't (9/16)

Bidder certifies, by signing this bid form, that to the best of Bidder's knowledge that the following representations are accurate and complete.

- a. That the Bidder and its principals are not presently debarred, suspended, proposed for debarment, declared ineligible, or voluntary excluded from timber sales (covered transactions) by any Federal department or agency.
- b. That the Bidder and its principals have not within a 3-year period preceding this bid been convicted of or had a civil judgment rendered against them for commission of fraud or a criminal offense in connection with obtaining, attempting to obtain, or performing a public (Federal, State, or local) transaction or contract under a public transaction; violation of Federal or State antitrust statutes or commission of embezzlement, theft, forgery, bribery, falsification or destruction of records, making false statements, or receiving stolen property.

c. That the Bidder and its principals are not presently indicted for or otherwise criminally or civilly charged by a governmental entity (Federal, State, or local) with commission of any of the offenses enumerated in paragraph b of this certification.

d. That the Bidder and its principals have not within a 3-year period preceding this bid had one or more public transactions (Federal, State, or local) terminated for breach or default of a timber or forest product contract.

Bidders that cannot certify this requirement, in whole or in part, shall submit an explanation with their bid.

KEITH CREAGH

Director

# TIMBER SALE INFORMATION

## Floodwood Mix (12-053-17)

Dickinson County (Advertised Price \$129,391.70)

A timber sale contract for this lump sum, sealed bid timber sale will be awarded to the responsible bidder offering the highest sealed bid price. Bids must be at or above the following advertised price for each species:

<u>PRODUCTS &amp; SPECIES</u>	<u>ESTIMATED UNITS*</u>	<u>ADVERTISED PRICE</u>
Sawtimber		
Red Pine	1.70 MBF	\$ 142.00 / MBF
White Pine	26.30 MBF	\$ 62.00 / MBF
Pulpwood		
Balsam Fir	4.00 Cords	\$ 21.40 / Cord
Jack Pine	288.00 Cords	\$ 48.10 / Cord
Mixed Aspen	2,467.00 Cords	\$ 37.95 / Cord
Mixed Hardwood	517.00 Cords	\$ 30.55 / Cord
Red Pine	41.00 Cords	\$ 50.00 / Cord
White Pine	67.00 Cords	\$ 29.00 / Cord
White Spruce	6.00 Cords	\$ 28.55 / Cord

\* The total volume is statistically estimated within plus (+) or minus (-) 7.03 percent. The estimated units are final and not subject to adjustment. Prospective bidders are urged to examine this timber and to make their own estimates of quantity and quality.

### **BOND AND PAYMENT SCHEDULE:**

1. A bond in the amount of \$7,500.00 to insure faithful performance of the conditions of the contract will be deposited by the successful bidder within 21 days of the sale award.
2. Cutting in any sale or unit without the required advance payment would be considered a trespass.
3. Total payment must be paid in advance or according to the following schedule:
  - (a) Ten percent (10%) of the sale value must be paid within 21 days of the sale award.
  - (b) The 10% down payment will be credited towards the first unit cut.
4. If no cutting takes place, the 10% down payment will not be refunded.
5. Operations on the contract issued will terminate on 06/30/2019.

**Description of Timber by Payment Unit (PU)**

PU	MARKET GROUP	PRODUCT	QUANTITY	UNIT	ACRES	ADVERTISE PRICE
1	Jack Pine Mixed Aspen <i>B. T. Aspen</i> <i>Quaking Aspen</i> Mixed Hardwood <i>Black Cherry</i> <i>Red Maple</i>	Pulpwood	107.0 341.0 47.0 294.0 21.0 5.0 16.0	Cords Cords <i>Cords</i> <i>Cords</i> Cords <i>Cords</i> <i>Cords</i>	25.0	\$18,729.20
2	Jack Pine Mixed Aspen <i>Quaking Aspen</i> Mixed Hardwood <i>Black Cherry</i> <i>Paper Birch</i> <i>Red Maple</i> White Spruce	Pulpwood	177.0 410.0 410.0 171.0 3.0 2.0 166.0 5.0	Cords Cords <i>Cords</i> Cords <i>Cords</i> <i>Cords</i> <i>Cords</i> Cords	28.7	\$29,440.00
3	Balsam Fir Jack Pine Mixed Aspen <i>Quaking Aspen</i> Mixed Hardwood <i>Black Cherry</i> <i>Paper Birch</i> <i>Red Maple</i> White Spruce	Pulpwood	3.0 4.0 826.0 826.0 201.0 1.0 50.0 150.0 1.0	Cords Cords Cords <i>Cords</i> Cords <i>Cords</i> <i>Cords</i> <i>Cords</i> Cords	49.5	\$37,772.40
4	Balsam Fir Mixed Aspen <i>Quaking Aspen</i> Mixed Hardwood <i>Black Cherry</i> <i>Red Maple</i> Red Pine	Pulpwood	1.0 324.0 324.0 14.0 4.0 10.0 39.0	Cords Cords <i>Cords</i> Cords <i>Cords</i> <i>Cords</i> Cords	20.6	\$14,694.90
5	Red Pine White Pine Mixed Hardwood <i>Red Maple</i> Red Pine White Pine	Sawtimber  Pulpwood	1.7 26.3 2.0 2.0 2.0 67.0	MBF MBF Cords <i>Cords</i> Cords Cords	5.5	\$3,976.10
6	Mixed Aspen <i>Quaking Aspen</i> Mixed Hardwood <i>Black Cherry</i> <i>Paper Birch</i> <i>Red Maple</i>	Pulpwood	297.0 297.0 45.0 6.0 3.0 36.0	Cords <i>Cords</i> Cords <i>Cords</i> <i>Cords</i> <i>Cords</i>	19.0	\$12,645.90
7	Mixed Aspen <i>Quaking Aspen</i> Mixed Hardwood <i>Red Maple</i>	Pulpwood	269.0 269.0 63.0 63.0	Cords <i>Cords</i> Cords <i>Cords</i>	12.7	\$12,133.20
TOTAL:			28.0	MBF		
TOTAL:			3,390.0	Cords		

# Sale Specific Conditions & Requirements

**Sale Name: Floodwood Mix**

**Sale Number: 12-053-17 Seq#: 1**

## 1 - Sale Area

### 1.2 - Boundaries

#### 1.2.1 - Painted boundaries (1/14)

Timber sale boundary lines against private property are marked with blue paint. Sale boundary lines against state land are marked with double red paint dots. Interior Payment Unit boundaries are marked with double red paint slashes.

## 2 - Timber Specifications

### 2.1 - Included Timber

#### 2.1.1 - Clearcut unit(s) with unmerchantable trees (6/14)

Within Payment Unit(s) 1, 2, 3, 6 and 7, cut all trees that are two (2) inches or more at DBH, except do not cut red pine, white pine, hemlock, cedar or oak.

Within Payment Unit(s) 4, cut all red pine trees which meet minimum piece specifications in 2.2 - Utilization, except do not cut red pine marked with green paint. In addition, cut all other trees two (2) inches or more at DBH, except do not cut any white pine or oak.

Within Payment Unit(s) 5, cut all trees two (2) inches or more at DBH, except do not cut oak and pine marked with green paint.

### 2.2 - Utilization

#### 2.2.11 - Chipping restriction (9/14)

If chipping occurs on this sale, then no woody debris present on the ground at the start of the sale may be chipped. In Payment Units 1 and 2, no chipping of jack pine tops is allowed. In addition, brush or chips may not be stored or stockpiled on-site for more than 60 days past the sale expiration date. Residual chip depth at the landing may not exceed 4 inches.

### 2.3 - Log Rule

#### 2.3.1 - Log rule (12/08)

All board foot volumes of sawlog size products in this contract have been determined by the Scribner Decimal C Log Rule.

## 4 - Transportation

### 4.1 - Construction

#### 4.1.6 - Road construction (1/09)

Improvements of existing roads shall be done in such a way as to minimize the environmental and visual impacts. Merchantable trees shall be cut and utilized unless otherwise directed. Non-merchantable trees shall be severed and laid flat on the ground. Slash shall be scattered, and not left in windrows. Stumps shall be set upright, not left on edge, and be moved at least 10 feet away from the road edge. Disturbed soil shall be feathered into the woods and not left in berms or windrows.

#### 4.1.7 - Road closure (10/11)

All new roads built into the sale must be blocked to vehicle traffic within 60 days of the sale expiration. Overgrown roads that are reopened shall be considered new roads. In general, this will require constructing a four foot high berm of stumps and logs covered with dirt. Contact the sale administrator for specific design and placement.

## 5 - Operations

### 5.2 - Conduct of Operations

#### 5.2.1 - Slash

##### 5.2.1.1 - Slash within sale area (9/16)

No trees are to be felled outside the sale area and all slash is to be kept at least 10 feet back from the red and blue paint

line. If sale boundary lines are along a public road or highway, then slash must be removed 50' from these lines per General Condition & Requirement 5.2.1.

#### 5.2.1.8 - Slash height (12/08)

No slash or tree tops may exceed 36 inches in height.

#### 5.2.37 - No decking areas (12/08)

No decking is allowed on Floodwood Road or the snowmobile trail.

#### 5.2.38 - No decking against live trees (2/04)

Cut products may not be decked against unmarked or designated leave trees.

#### 5.2.41 - Snowmobile trail protection (9/11)

The snowmobile trail is shown on the Timber Sale Map. Do not cut or damage posts with orange trail markers or traffic control signs. If hauling during the snowmobile season, then a snow covered base must be left on the trail and signs must be placed at each end of the trail. Maintain a 20 foot wide slash, debris, and rut free zone daily using the snowmobile trail as the centerline. No decking of forest products will be permitted along the snowmobile trail.

### 5.4 - Soil Protection

#### 5.4.1 - Rutting restriction, general (7/16)

Operations are to cease immediately if equipment and weather conditions result in rutting of roads and/or skid trails which is 12 inches or greater in depth and 50 feet in length. The Unit Manager or his/her representative may restrict hauling and/or skidding if ruts exceed the specified depth. With the Unit Manager or his/her representative's approval, the Purchaser may return to the area when the risk of rutting has decreased.

### 5.8 - Protection of Endangered Species

#### 5.8.5 - Protection of raptor nests (3/13)

All trees with raptor nests will be protected if found during harvesting operations. Notification will be made to the Unit Manager or his/her representative who will notify the Wildlife Biologist so an on-site evaluation and recommendation can be made, if necessary.

## 6 - Safety and Fire Prevention

### 6.2 - Signing

#### 6.2.2 - Snowmobile trail posting (8/09)

The Purchaser is responsible for posting and maintaining caution signs on the snowmobile trail prior to beginning operations during the snowmobile season (approximately December 1 to March 31). The trail must be posted at appropriate distances from the sale area to warn of logging activity and truck traffic. Signs must be removed when harvest operations are suspended or completed. The Purchaser will provide these signs.





# TIMBER SALE MAP

This information provided by authority of Part 525, 1994 PA 451, as amended.

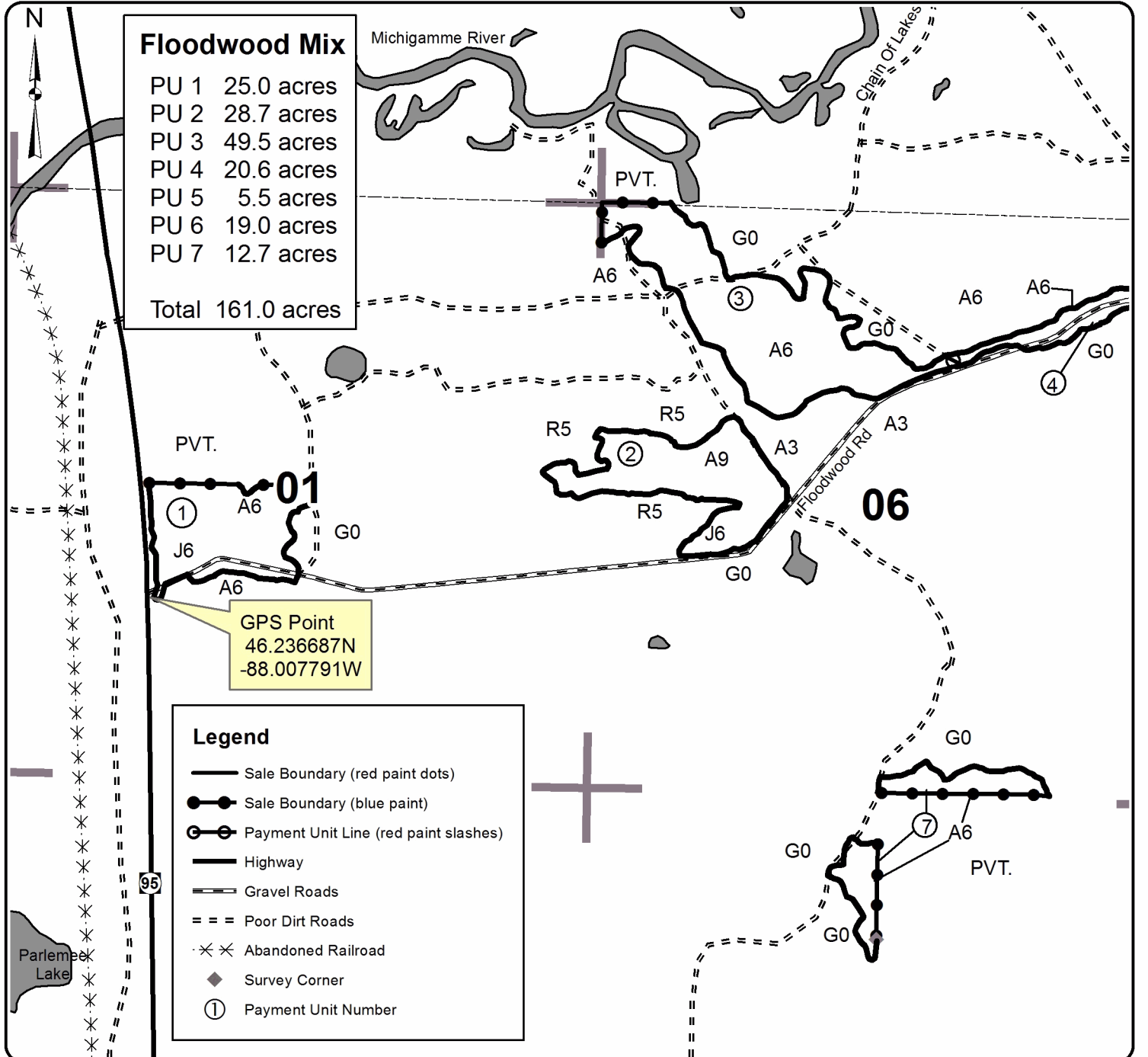
Forest Management Unit <b>CRYSTAL FALLS</b>	County <b>Dickinson</b>	Mapped By <b>SCOTT SEBERO</b>	Date <b>01/10/2017</b>	Page <b>1</b>	of <b>2</b>
Township <b>44N</b>	Range <b>29W</b>	Section(s) and Subdivision(s) <b>44N-30W 1 N1/2SW,NWSE,SENE</b>	Scale <b>1:15,840</b>		
		Cruised By <b>SCOTT SEBERO</b>			
Section(s) and Subdivision(s) <b>5 NW1/4, 6 NW1/4,N1/2SW,N1/2NE,S1/2SE, 7 E1/2NW</b>					

### Cover Type

A = Aspen	H = Hemlock	N = Marsh	U = Upland Brush
B = Paper Birch	J = Jack Pine	O = Oak	UM = Upland Mixed
C = Cedar	L = Lowland Brush	P = Lowland Poplar	V = Bog or Marsh
D = Tread Bog	LM = Lowland Mixed	Q = Mixed Swamp Conifer	W = White Pine
E = Swamp Hdwoods	M = Mpl, Bch, Brch	R = Red Pine	X = Non Stocked
F = Spruce Fir	MC = Mixed Conifer	S = Black Spruce	Z = Water
G = Grass	MD = Mixed Deciduous	T = Tamarack	

### Density

0 = Non Stocked	5 = Pole Timber Medium
1 = Seedling Sapling Poor	6 = Pole Timber Well
2 = Seedling Sapling Medium	7 = Saw Timber Poor
3 = Seedling Sapling Well	8 = Saw Timber Medium
4 = Pole Timber Poor	9 = Saw Timber Well





# TIMBER SALE MAP

This information provided by authority of Part 525, 1994 PA 451, as amended.

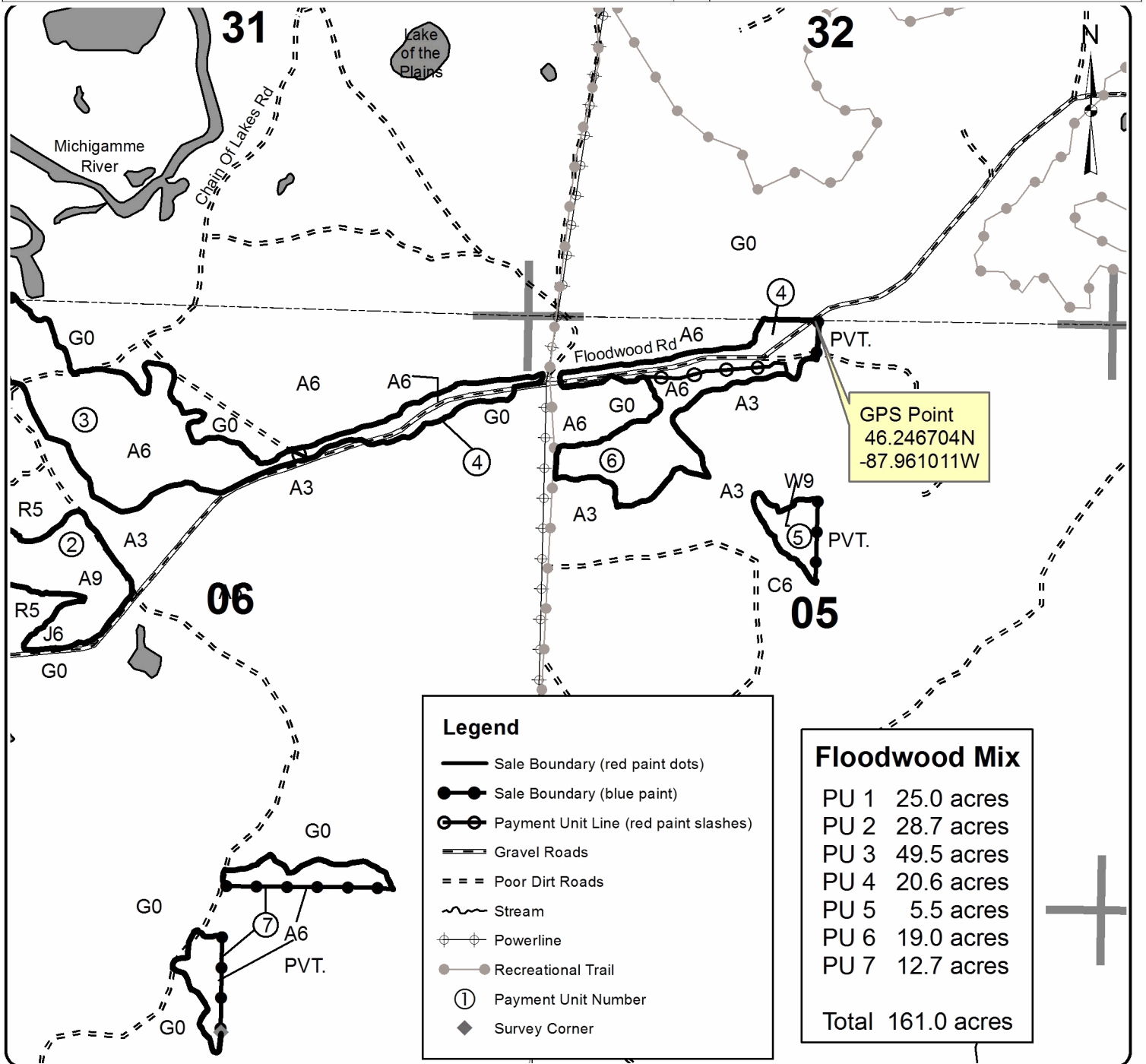
Forest Management Unit CRYSTAL FALLS	County Dickinson	Mapped By SCOTT SEBERO	Date 01/10/2017	Page 2	of 2
Township 44N	Range 29W	Section(s) and Subdivision(s) 44N-30W 1 N1/2SW,NWSE,SENE 5 NW1/4, 6 NW1/4,N1/2SW,N1/2NE,S1/2SE, 7 E1/2NW	Scale 1:15,840		
Cruised By SCOTT SEBERO					

### Cover Type

A = Aspen	H = Hemlock	N = Marsh	U = Upland Brush
B = Paper Birch	J = Jack Pine	O = Oak	UM = Upland Mixed
C = Cedar	L = Lowland Brush	P = Lowland Poplar	V = Bog or Marsh
D = Treed Bog	LM = Lowland Mixed	Q = Mixed Swamp Conifer	W = White Pine
E = Swamp Hdwoods	M = Mpl, Bch, Brch	R = Red Pine	X = Non Stocked
F = Spruce Fir	MC = Mixed Conifer	S = Black Spruce	Z = Water
G = Grass	MD = Mixed Deciduous	T = Tamarack	

### Density

0 = Non Stocked	5 = Pole Timber Medium
1 = Seedling Sapling Poor	6 = Pole Timber Well
2 = Seedling Sapling Medium	7 = Saw Timber Poor
3 = Seedling Sapling Well	8 = Saw Timber Medium
4 = Pole Timber Poor	9 = Saw Timber Well



### Legend

- Sale Boundary (red paint dots)
- Sale Boundary (blue paint)
- ⊗ Payment Unit Line (red paint slashes)
- ▬ Gravel Roads
- == Poor Dirt Roads
- ~ Stream
- ⊕ Powerline
- Recreational Trail
- ① Payment Unit Number
- ◆ Survey Corner

### Floodwood Mix

PU 1	25.0 acres
PU 2	28.7 acres
PU 3	49.5 acres
PU 4	20.6 acres
PU 5	5.5 acres
PU 6	19.0 acres
PU 7	12.7 acres
<b>Total</b>	<b>161.0 acres</b>

# TIMBER SALE INFORMATION

## Parlamee Mix (12-054-17)

Dickinson County (Advertised Price \$98,098.95)

A timber sale contract for this lump sum, sealed bid timber sale will be awarded to the responsible bidder offering the highest sealed bid price. Bids must be at or above the following advertised price for each species:

<u>PRODUCTS &amp; SPECIES</u>	<u>ESTIMATED UNITS*</u>	<u>ADVERTISED PRICE</u>
Sawtimber		
Red Pine	40.10 MBF	\$ 142.00 / MBF
Pulpwood		
Mixed Aspen	1,613.00 Cords	\$ 37.95 / Cord
Mixed Hardwood	552.00 Cords	\$ 30.55 / Cord
Red Pine	266.00 Cords	\$ 50.00 / Cord
White Spruce	36.00 Cords	\$ 28.55 / Cord

\* The total volume is statistically estimated within plus (+) or minus (-) 8.60 percent. The estimated units are final and not subject to adjustment. Prospective bidders are urged to examine this timber and to make their own estimates of quantity and quality.

### **BOND AND PAYMENT SCHEDULE:**

1. A bond in the amount of \$5,500.00 to insure faithful performance of the conditions of the contract will be deposited by the successful bidder within 21 days of the sale award.
2. Cutting in any sale or unit without the required advance payment would be considered a trespass.
3. Total payment must be paid in advance or according to the following schedule:
  - (a) Ten percent (10%) of the sale value must be paid within 21 days of the sale award.
  - (b) The 10% down payment will be credited towards the first unit cut.
4. If no cutting takes place, the 10% down payment will not be refunded.
5. Operations on the contract issued will terminate on 06/30/2019.

**Description of Timber by Payment Unit (PU)**

PU	MARKET GROUP	PRODUCT	QUANTITY	UNIT	ACRES	ADVERTISE PRICE
1	Mixed Aspen	Pulpwood	175.0	Cords	13.8	\$7,527.20
	<i>Quaking Aspen</i>		175.0	<i>Cords</i>		
	Mixed Hardwood		29.0	Cords		
	<i>Black Cherry</i>		3.0	<i>Cords</i>		
	<i>Paper Birch</i>		17.0	<i>Cords</i>		
	<i>Red Maple</i>		9.0	<i>Cords</i>		
2	Mixed Aspen	Pulpwood	225.0	Cords	17.1	\$12,593.90
	<i>B. T. Aspen</i>		49.0	<i>Cords</i>		
	<i>Balsam Poplar</i>		8.0	<i>Cords</i>		
	<i>Quaking Aspen</i>		168.0	<i>Cords</i>		
	Mixed Hardwood		129.0	Cords		
	<i>Paper Birch</i>		23.0	<i>Cords</i>		
	<i>Red Maple</i>		106.0	<i>Cords</i>		
	White Spruce		4.0	Cords		
3	Red Pine	Sawtimber	40.1	MBF	28.1	\$21,629.25
	Mixed Aspen	Pulpwood	47.0	Cords		
	<i>Quaking Aspen</i>		47.0	<i>Cords</i>		
	Mixed Hardwood		26.0	Cords		
	<i>Black Cherry</i>		12.0	<i>Cords</i>		
	<i>Paper Birch</i>		13.0	<i>Cords</i>		
	<i>Red Maple</i>		1.0	<i>Cords</i>		
	Red Pine		266.0	Cords		
	White Spruce		2.0	Cords		
	4		Mixed Aspen	Pulpwood		
<i>B. T. Aspen</i>		3.0	<i>Cords</i>			
<i>Quaking Aspen</i>		66.0	<i>Cords</i>			
Mixed Hardwood		184.0	Cords			
<i>Paper Birch</i>		42.0	<i>Cords</i>			
<i>Red Maple</i>		111.0	<i>Cords</i>			
<i>Sugar Maple</i>		31.0	<i>Cords</i>			
White Spruce		2.0	Cords			
5	Mixed Aspen	Pulpwood	426.0	Cords	24.2	\$18,680.35
	<i>B. T. Aspen</i>		10.0	<i>Cords</i>		
	<i>Quaking Aspen</i>		416.0	<i>Cords</i>		
	Mixed Hardwood		72.0	Cords		
	<i>Black Cherry</i>		1.0	<i>Cords</i>		
	<i>Paper Birch</i>		17.0	<i>Cords</i>		
	<i>Red Maple</i>		54.0	<i>Cords</i>		
	White Spruce		11.0	Cords		
6	Mixed Aspen	Pulpwood	671.0	Cords	38.2	\$29,371.40
	<i>B. T. Aspen</i>		15.0	<i>Cords</i>		
	<i>Quaking Aspen</i>		656.0	<i>Cords</i>		
	Mixed Hardwood		112.0	Cords		
	<i>Black Cherry</i>		2.0	<i>Cords</i>		
	<i>Paper Birch</i>		26.0	<i>Cords</i>		
	<i>Red Maple</i>		84.0	<i>Cords</i>		
	White Spruce		17.0	Cords		
TOTAL:			40.1	MBF		
TOTAL:			2,467.0	Cords		

## Sale Specific Conditions & Requirements

**Sale Name: Parlamee Mix**

**Sale Number: 12-054-17 Seq#: 1**

### 1 - Sale Area

#### 1.2 - Boundaries

##### 1.2.1 - Painted boundaries (1/14)

Timber sale boundary lines against private property are marked with blue paint. Sale boundary lines against state land are marked with double red paint dots. Interior Payment Unit boundaries are marked with double red paint slashes.

### 2 - Timber Specifications

#### 2.1 - Included Timber

##### 2.1.1 - Clearcut unit(s) with unmerchantable trees (6/14)

Within Payment Unit(s) 1, 2, 4, 5 and 6, cut all aspen and mixed hardwood trees that are two (2) inches or more at DBH except oak. In addition, cut all spruce, balsam, tamarack and jack pine which meet minimum piece specifications in 2.2 - Utilization.

##### 2.1.3 - Cut tree marked unit(s) (12/08)

Within Payment Unit(s) 3, red and white pine are designated for cutting when marked with orange paint above and below stump height, regardless of merchantability. In addition, cut all aspen, jack pine, spruce, balsam, birch, maple and black cherry which meet minimum piece specifications in 2.2 - Utilization.

#### 2.2 - Utilization

##### 2.2.11 - Chipping restriction (9/14)

If chipping occurs on this sale, then no woody debris present on the ground at the start of the sale may be chipped. In addition, brush or chips may not be stored or stockpiled on-site for more than 60 days past the sale expiration date. Residual chip depth at the landing may not exceed 4 inches.

#### 2.3 - Log Rule

##### 2.3.1 - Log rule (12/08)

All board foot volumes of sawlog size products in this contract have been determined by the Scribner Decimal C Log Rule.

### 4 - Transportation

#### 4.1 - Construction

##### 4.1.6 - Road construction (1/09)

Improvements of existing roads shall be done in such a way as to minimize the environmental and visual impacts. Merchantable trees shall be cut and utilized unless otherwise directed. Non-merchantable trees shall be severed and laid flat on the ground. Slash shall be scattered, and not left in windrows. Stumps shall be set upright, not left on edge, and be moved at least 10 feet away from the road edge. Disturbed soil shall be feathered into the woods and not left in berms or windrows.

##### 4.1.7 - Road closure (10/11)

All new roads built into the sale must be blocked to vehicle traffic within 60 days of the sale expiration. Overgrown roads that are reopened shall be considered new roads. In general, this will require constructing a four foot high berm of stumps and logs covered with dirt. Contact the sale administrator for specific design and placement.

### 5 - Operations

#### 5.2 - Conduct of Operations

##### 5.2.1 - Slash

###### 5.2.1.8 - Slash height (12/08)

No slash or tree tops may exceed 36 inches in height.

##### 5.2.3 - Operating Restrictions

#### 5.2.3.1 - Operating restrictions (9/11)

Within Payment Unit(s) 3, unless changed by written agreement, cutting, skidding, and hauling are not permitted from March 31 to June 1. This restriction is to avoid spring break up conditions.

#### 5.2.3.3 - Bark slippage restriction (3/09)

Within Payment Unit(s) 3, unless changed by written agreement, cutting and skidding are not permitted during the period of April 15 to July 15. This restriction is because of bark slippage.

#### 5.2.38 - No decking against live trees (2/04)

Cut products may not be decked against unmarked or designated leave trees.

### 5.4 - Soil Protection

#### 5.4.1 - Rutting restriction, general (7/16)

Operations are to cease immediately if equipment and weather conditions result in rutting of roads and/or skid trails which is 12 inches or greater in depth and 50 feet in length. The Unit Manager or his/her representative may restrict hauling and/or skidding if ruts exceed the specified depth. With the Unit Manager or his/her representative's approval, the Purchaser may return to the area when the risk of rutting has decreased.

### 5.8 - Protection of Endangered Species

#### 5.8.5 - Protection of raptor nests (3/13)

All trees with raptor nests will be protected if found during harvesting operations. Notification will be made to the Unit Manager or his/her representative who will notify the Wildlife Biologist so an on-site evaluation and recommendation can be made, if necessary.



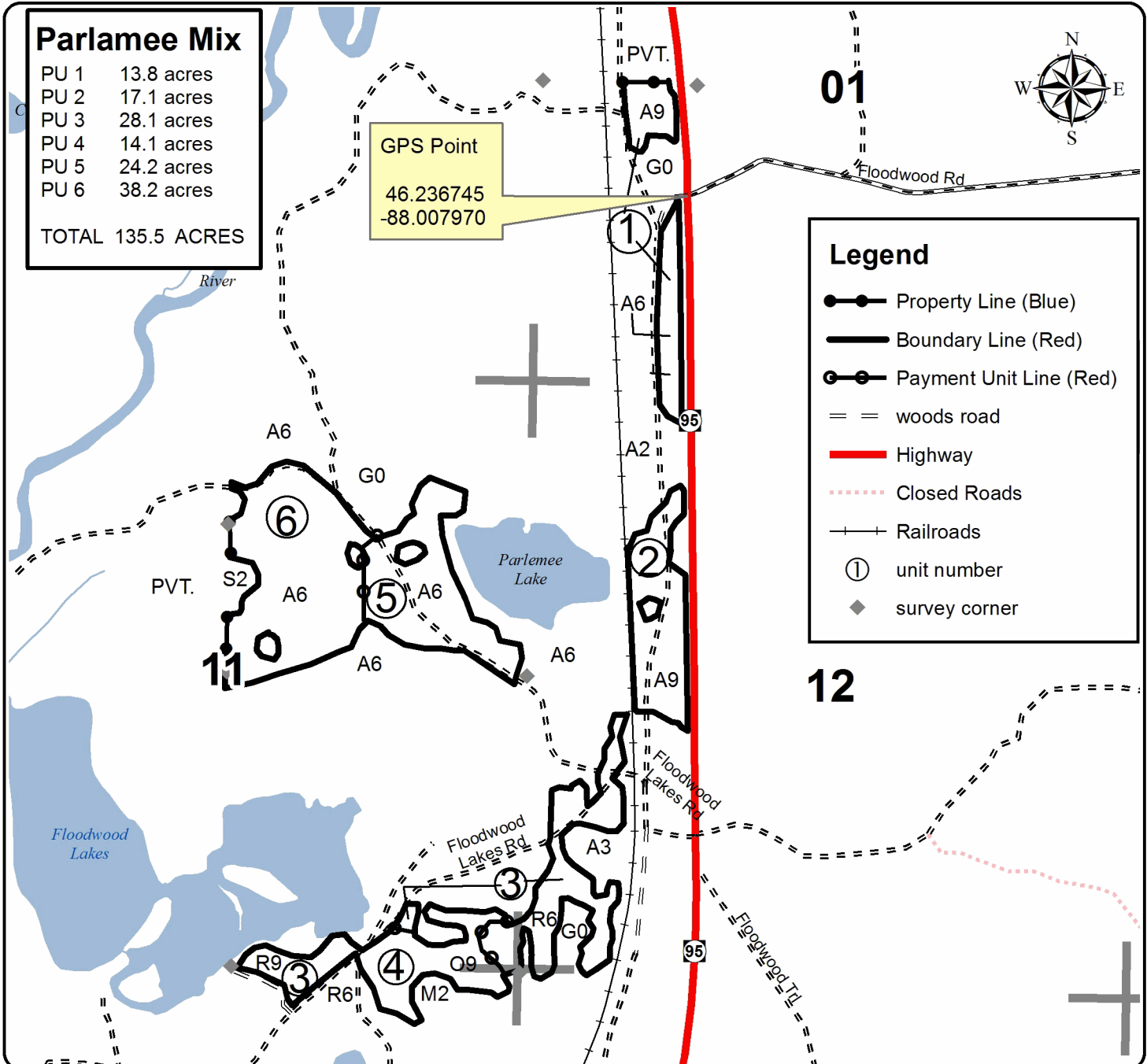
# TIMBER SALE MAP

This information provided by authority of Part 525, 1994 PA 451, as amended.

Sale Number	Year
12-054-17	2017

Forest Management Unit <b>CRYSTAL FALLS</b>	County <b>Dickinson</b>	Mapped By <b>SCOTT SEBERO</b>	Date <b>01/10/2017</b>	Page <b>1</b>	of <b>1</b>
Township <b>44 N</b>	Range <b>30W</b>	Section(s) and Subdivision(s) <b>1 W1/2SW, 11 NE1/4,S1/2SE,NWSE 12 N1/2SW,SWSW,S1/2NW,NWNW, 13 NWNW, 14 N1/2NE</b>	Scale <b>1:15,840</b>		
Cruised By <b>SCOTT SEBERO</b>					

Cover Type				Density	
A = Aspen	H = Hemlock	N = Marsh	U = Upland Brush	0 = Non Stocked	5 = Pole Timber Medium
B = Paper Birch	J = Jack Pine	O = Oak	UM = Upland Mixed	1 = Seedling Sapling Poor	6 = Pole Timber Well
C = Cedar	L = Lowland Brush	P = Lowland Poplar	V = Bog or Marsh	2 = Seedling Sapling Medium	7 = Saw Timber Poor
D = Treed Bog	LM = Lowland Mixed	Q = Mixed Swamp Conifer	W = White Pine	3 = Seedling Sapling Well	8 = Saw Timber Medium
E = Swamp Hdwoods	M = Mpl, Bch, Brch	R = Red Pine	X = Non Stocked	4 = Pole Timber Poor	9 = Saw Timber Well
F = Spruce Fir	MC = Mixed Conifer	S = Black Spruce	Z = Water		
G = Grass	MD = Mixed Deciduous	T = Tamarack			







# TIMBER SALE INFORMATION

## Big Wheel Contract (12-050-16)

Dickinson County (Advertised Price \$136,250.90)

A timber sale contract for this lump sum, sealed bid timber sale will be awarded to the responsible bidder offering the highest sealed bid price. Bids must be at or above the following advertised price for each species:

<u>PRODUCTS &amp; SPECIES</u>	<u>ESTIMATED UNITS*</u>	<u>ADVERTISED PRICE</u>
Sawtimber		
Basswood	22.10 MBF	\$ 249.00 / MBF
Paper Birch	0.30 MBF	\$ 115.00 / MBF
Red Maple	0.80 MBF	\$ 277.00 / MBF
Sugar Maple	1.60 MBF	\$ 508.00 / MBF
White Ash	1.50 MBF	\$ 87.00 / MBF
Pulpwood		
Balsam Fir	332.00 Cords	\$ 21.40 / Cord
Basswood	227.00 Cords	\$ 13.05 / Cord
Mixed Aspen	1,536.00 Cords	\$ 37.95 / Cord
Mixed Hardwood	1,810.00 Cords	\$ 30.55 / Cord
Mixed Spruce	205.00 Cords	\$ 28.55 / Cord
Tamarack	3.00 Cords	\$ 14.00 / Cord

\* The total volume is statistically estimated within plus (+) or minus (-) 8.39 percent. The estimated units are final and not subject to adjustment. Prospective bidders are urged to examine this timber and to make their own estimates of quantity and quality.

### **BOND AND PAYMENT SCHEDULE:**

1. A bond in the amount of \$10,000.00 to insure faithful performance of the conditions of the contract will be deposited by the successful bidder within 21 days of the sale award.
2. Cutting in any sale or unit without the required advance payment would be considered a trespass.
3. Total payment must be paid in advance or according to the following schedule:
  - (a) Ten percent (10%) of the sale value must be paid within 21 days of the sale award.
  - (b) The 10% down payment will be credited towards the first unit cut.
4. If no cutting takes place, the 10% down payment will not be refunded.
5. Operations on the contract issued will terminate on 06/30/2019.

**Description of Timber by Payment Unit (PU)**

PU	MARKET GROUP	PRODUCT	QUANTITY	UNIT	ACRES	ADVERTISE PRICE
1	Balsam Fir	Pulpwood	261.0	Cords	45.4	\$34,025.95
	Mixed Aspen		410.0	Cords		
	<i>Balsam Poplar</i>		159.0	<i>Cords</i>		
	<i>Quaking Aspen</i>		251.0	<i>Cords</i>		
	Mixed Hardwood		267.0	Cords		
	<i>Black Ash</i>		3.0	<i>Cords</i>		
	<i>Ironwood</i>		2.0	<i>Cords</i>		
	<i>Paper Birch</i>		99.0	<i>Cords</i>		
	<i>Red Maple</i>		138.0	<i>Cords</i>		
	<i>Sugar Maple</i>		25.0	<i>Cords</i>		
	Mixed Spruce		164.0	Cords		
	<i>Black Spruce</i>		1.0	<i>Cords</i>		
	<i>White Spruce</i>		163.0	<i>Cords</i>		
	Tamarack		3.0	Cords		
2	Basswood	Sawtimber	13.3	MBF	76.1	\$36,125.20
	Paper Birch		0.1	MBF		
	Red Maple		0.1	MBF		
	Sugar Maple		1.3	MBF		
	White Ash		0.3	MBF		
	Balsam Fir	Pulpwood	55.0	Cords		
	Basswood		49.0	Cords		
	Mixed Aspen		413.0	Cords		
	<i>B. T. Aspen</i>		9.0	<i>Cords</i>		
	<i>Balsam Poplar</i>		45.0	<i>Cords</i>		
	<i>Quaking Aspen</i>		359.0	<i>Cords</i>		
	Mixed Hardwood		447.0	Cords		
	<i>Ironwood</i>		20.0	<i>Cords</i>		
	<i>Paper Birch</i>		4.0	<i>Cords</i>		
	<i>Red Maple</i>		5.0	<i>Cords</i>		
	<i>Sugar Maple</i>		417.0	<i>Cords</i>		
	<i>White Ash</i>		1.0	<i>Cords</i>		
	Mixed Spruce		33.0	Cords		
	<i>White Spruce</i>		33.0	<i>Cords</i>		
	3		Basswood	Sawtimber		
Sugar Maple		0.1	MBF			
White Ash		0.2	MBF			
Basswood		Pulpwood	75.0	Cords		
Mixed Aspen			270.0	Cords		
<i>Balsam Poplar</i>			15.0	<i>Cords</i>		
<i>Quaking Aspen</i>			255.0	<i>Cords</i>		
Mixed Hardwood			326.0	Cords		
<i>Ironwood</i>			2.0	<i>Cords</i>		
<i>Red Maple</i>			33.0	<i>Cords</i>		
<i>Sugar Maple</i>			291.0	<i>Cords</i>		
4	Basswood	Sawtimber	3.0	MBF	75.6	\$27,923.45
	Red Maple		0.1	MBF		
	Sugar Maple		0.1	MBF		
	White Ash		0.3	MBF		
	Basswood	Pulpwood	95.0	Cords		
	Mixed Aspen		345.0	Cords		
	<i>Balsam Poplar</i>		20.0	<i>Cords</i>		
	<i>Quaking Aspen</i>		325.0	<i>Cords</i>		
	Mixed Hardwood		417.0	Cords		
	<i>Ironwood</i>		3.0	<i>Cords</i>		
	<i>Red Maple</i>		43.0	<i>Cords</i>		
	<i>Sugar Maple</i>		370.0	<i>Cords</i>		

**Description of Timber by Payment Unit (PU), con't**

PU	MARKET GROUP	PRODUCT	QUANTITY	UNIT	ACRES	ADVERTISE PRICE
4 con't	<i>White Ash</i>	<i>Pulpwood</i>	1.0	<i>Cords</i>		
5	Basswood	Sawtimber	3.5	MBF	63.2	\$16,350.85
	Paper Birch		0.2	MBF		
	Red Maple		0.6	MBF		
	Sugar Maple		0.1	MBF		
	White Ash		0.7	MBF		
	Balsam Fir	Pulpwood	16.0	Cords		
	Basswood		8.0	Cords		
	Mixed Aspen		98.0	Cords		
	<i>Quaking Aspen</i>		98.0	<i>Cords</i>		
	Mixed Hardwood		353.0	Cords		
	<i>Ironwood</i>		18.0	<i>Cords</i>		
	<i>Paper Birch</i>		1.0	<i>Cords</i>		
	<i>Red Maple</i>		140.0	<i>Cords</i>		
	<i>Sugar Maple</i>		190.0	<i>Cords</i>		
	<i>White Ash</i>		1.0	<i>Cords</i>		
	<i>Yellow Birch</i>		3.0	<i>Cords</i>		
	Mixed Spruce		8.0	Cords		
	<i>White Spruce</i>		8.0	<i>Cords</i>		
TOTAL:			26.3	MBF		
TOTAL:			4,113.0	Cords		

## Sale Specific Conditions & Requirements

**Sale Name: Big Wheel Contract**

**Sale Number: 12-050-16 Seq#: 1**

### 1 - Sale Area

#### 1.2 - Boundaries

##### 1.2.1 - Painted boundaries (1/14)

Timber sale boundary lines against private property are marked with blue paint. Sale boundary lines against state land are marked with double red paint dots. Interior Payment Unit boundaries are marked with double red paint slashes.

### 2 - Timber Specifications

#### 2.1 - Included Timber

##### 2.1.1 - Clearcut unit(s) with unmerchantable trees (6/14)

Within Payment Unit(s) 1, cut all aspen, balm, mixed hardwood, spruce, balsam, tamarack and jack pine trees that are greater than 6 inches or more at DBH except oak.

##### 2.1.3 - Cut tree marked unit(s) (12/08)

Within Payment Unit(s) 2, 3, 4 and 5, hardwood trees are designated for cutting when marked with orange paint above and below stump height, regardless of merchantability. In addition, cut all aspen, spruce, tamarack and balsam which meet minimum piece specifications in 2.2 - Utilization.

#### 2.2 - Utilization

##### 2.2.11 - Chipping restriction (9/14)

If chipping occurs on this sale, then no woody debris present on the ground at the start of the sale may be chipped. In addition, brush or chips may not be stored or stockpiled on-site for more than 60 days past the sale expiration date. Residual chip depth at the landing may not exceed 4 inches.

#### 2.3 - Log Rule

##### 2.3.1 - Log rule (12/08)

All board foot volumes of sawlog size products in this contract have been determined by the Scribner Decimal C Log Rule.

### 4 - Transportation

#### 4.1 - Construction

##### 4.1.3 - Slash and earthen piles (8/04)

Piles or windrows of earth along roads and landings that have been widened or constructed shall be leveled. Slash from road maintenance or construction, including stumps, shall be removed at least ten feet from the edge of the road and not left in piles.

##### 4.1.6 - Road construction (1/09)

Improvements of existing roads shall be done in such a way as to minimize the environmental and visual impacts. Merchantable trees shall be cut and utilized unless otherwise directed. Non-merchantable trees shall be severed and laid flat on the ground. Slash shall be scattered, and not left in windrows. Stumps shall be set upright, not left on edge, and be moved at least 10 feet away from the road edge. Disturbed soil shall be feathered into the woods and not left in berms or windrows.

##### 4.1.7 - Road closure (10/11)

All new roads built into the sale must be blocked to vehicle traffic within 60 days of the sale expiration. Overgrown roads that are reopened shall be considered new roads. In general, this will require constructing a four foot high berm of stumps and logs covered with dirt. Contact the sale administrator for specific design and placement.

### 5 - Operations

#### 5.1 - Notification

##### 5.1.1 - Pre-sale conference (10/11)

A pre-sale conference on site between the Purchaser and sale administrator is required prior to beginning any operations to determine landing and road locations. The Unit Manager or his/her representative must be contacted at least 10 days in advance to schedule the conference.

#### 5.1.4 - Post-sale conference (6/11)

A post-sale conference on site between the Purchaser and sale administrator is required 5 days prior to the completion of active logging operations to determine clean-up and repair of landings, road edges, and the fulfillment of other contract specifications.

### 5.2 - Conduct of Operations

#### 5.2.1 - Slash

##### 5.2.1.1 - Slash within sale area (2/04)

No trees are to be felled outside the sale area and all slash is to be kept at least 10 feet back from the blue and red paint line.

##### 5.2.1.8 - Slash height (12/08)

No slash or tree tops may exceed 36 inches in height.

#### 5.2.2 - Hazard Trees/Snags

##### 5.2.2.1 - Den trees (2/04)

Obvious hollow and/or den trees shall be protected and left standing unless they are a safety hazard.

#### 5.2.3 - Operating Restrictions

##### 5.2.3.1 - Operating restrictions (9/11)

Within Payment Unit(s) 2-5, unless changed by written agreement, cutting, skidding, and hauling are not permitted from March 31 to June 1. This restriction is to avoid spring break up conditions.

##### 5.2.3.3 - Bark slippage restriction (3/09)

Within Payment Unit(s) 2-5, unless changed by written agreement, cutting and skidding are not permitted during the period of April 15 to July 15. This restriction is because of bark slippage.

##### 5.2.37 - No decking areas (12/08)

No decking is allowed in the grass opening north and west of Payment Unit 5 without permission of the Unit Manager or his/her representative.

##### 5.2.38 - No decking against live trees (2/04)

Cut products may not be decked against unmarked or designated leave trees.

##### 5.2.41 - Snowmobile trail protection (9/11)

The Big Wheel Road is a snowmobile trail and is shown on the Timber Sale Map. Do not cut or damage posts with orange trail markers or traffic control signs. The road must be maintained and restored to a condition equal to or better than before the sale. The road maintenance/restoration must be done prior to December 1. If hauling during the snowmobile season, then a snow covered base must be left on the trail and signs must be placed at each end of the trail. Maintain a 20 foot wide slash, debris, and rut free zone daily using the snowmobile trail as the centerline. No decking of forest products will be permitted along the snowmobile trail during the snowmobile season.

### 5.4 - Soil Protection

#### 5.4.1 - Rutting restriction, general (7/16)

Operations are to cease immediately if equipment and weather conditions result in rutting of roads and/or skid trails which is 12 inches or greater in depth and 50 feet in length. The Unit Manager or his/her representative may restrict hauling and/or skidding if ruts exceed the specified depth. With the Unit Manager or his/her representative's approval, the Purchaser may return to the area when the risk of rutting has decreased.

### 5.7 - Protection of Historical Sites

#### 5.7.1 - Historical sites (7/12)

The Purchaser shall not cut live or dead trees or operate equipment within historical sites. Historical sites are located in the

grass opening at the north side of Payment Unit 5. The Purchaser shall protect historical sites from damage by the Purchaser's operations. If Purchaser's operations have cut or damaged historical sites through carelessness, the Purchaser shall pay \$500 as fixed, agreed and liquidated damages for each acre or part thereof cut or damaged.

#### 5.8 - Protection of Endangered Species

##### 5.8.5 - Protection of raptor nests (3/13)

All trees with raptor nests will be protected if found during harvesting operations. Notification will be made to the Unit Manager or his/her representative who will notify the Wildlife Biologist so an on-site evaluation and recommendation can be made, if necessary.

### 6 - Safety and Fire Prevention

#### 6.2 - Signing

##### 6.2.2 - Snowmobile trail posting (8/09)

The Purchaser is responsible for posting and maintaining caution signs on Big Wheel Road prior to beginning operations during the snowmobile season (approximately December 1 to March 31). The trail must be posted at appropriate distances from the sale area to warn of logging activity and truck traffic. Signs must be removed when harvest operations are suspended or completed. The Purchaser will provide these signs.



# TIMBER SALE MAP

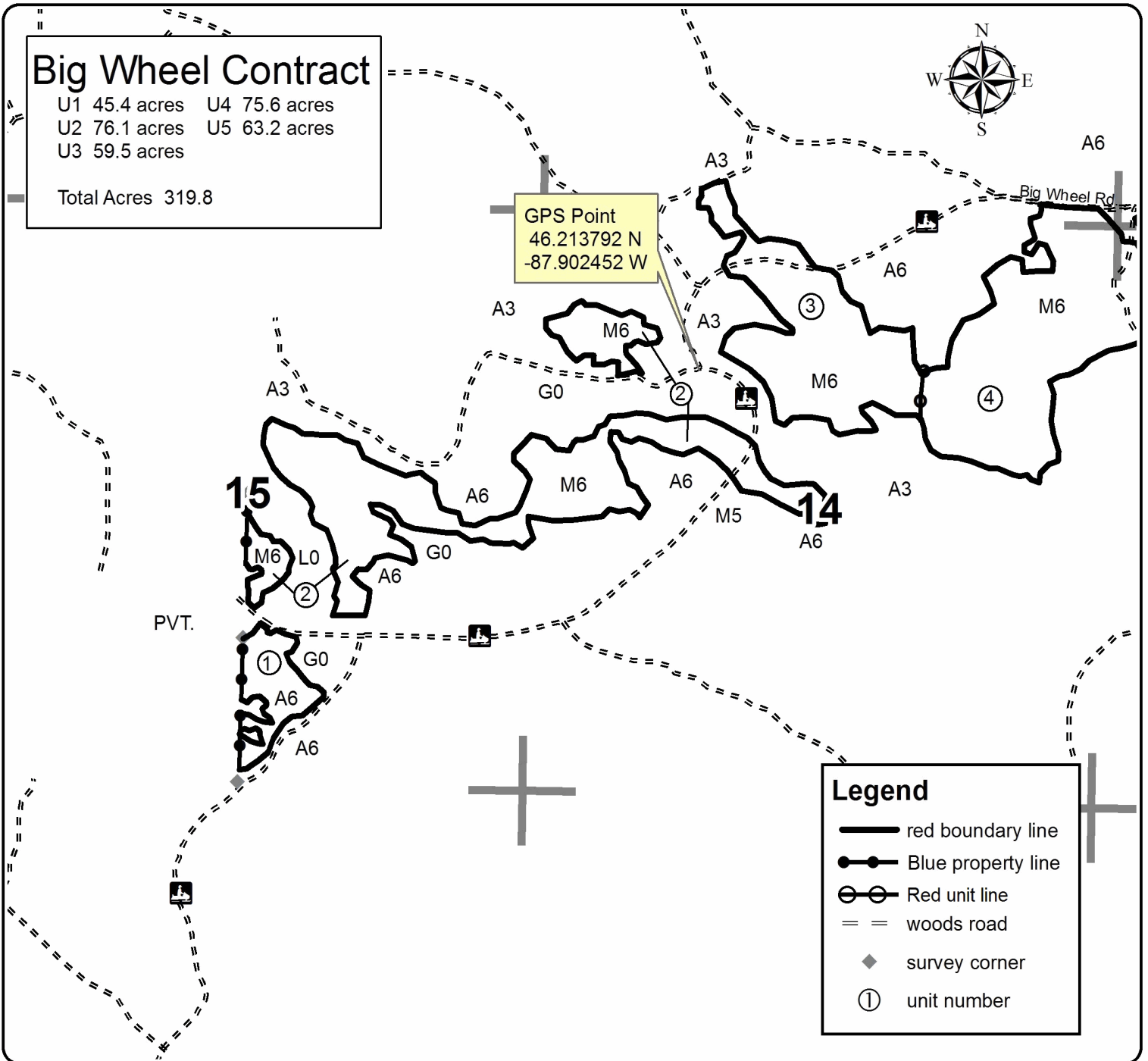
This information provided by authority of Part 525, 1994 PA 451, as amended.

Sale Number	Year
12-050-16-01	2016

Forest Management Unit	County	Mapped By	Date	Page	of
CRYSTAL FALLS	DICKINSON	Sebero	08/30/2016	1	2
		Cruised By			
		Sebero, Pogoreski			

Township	Range	Section(s) and Subdivision(s)	Scale
44N	29W	11 SESE,SESW 12 S1/2S1/2 14 N1/2,N1/2SW 13 W1/2NE,E1/2NW,NWNW,NESW 15 W1/2SE,NESE,S1/2NE	1:15,840

Cover Type				Density	
A = Aspen	H = Hemlock	N = Marsh	U = Upland Brush	0 = Non Stocked	5 = Pole Timber Medium
B = Paper Birch	J = Jack Pine	O = Oak	UM = Upland Mixed	1 = Seedling Sapling Poor	6 = Pole Timber Well
C = Cedar	L = Lowland Brush	P = Lowland Poplar	V = Bog or Marsh	2 = Seedling Sapling Medium	7 = Saw Timber Poor
D = Treed Bog	LM = Lowland Mixed	Q = Mixed Swamp Conifer	W = White Pine	3 = Seedling Sapling Well	8 = Saw Timber Medium
E = Swamp Hdwoods	M = Mpl, Bch, Brch	R = Red Pine	X = Non Stocked	4 = Pole Timber Poor	9 = Saw Timber Well
F = Spruce Fir	MC = Mixed Conifer	S = Black Spruce	Z = Water		
G = Grass	MD = Mixed Deciduous	T = Tamarack			





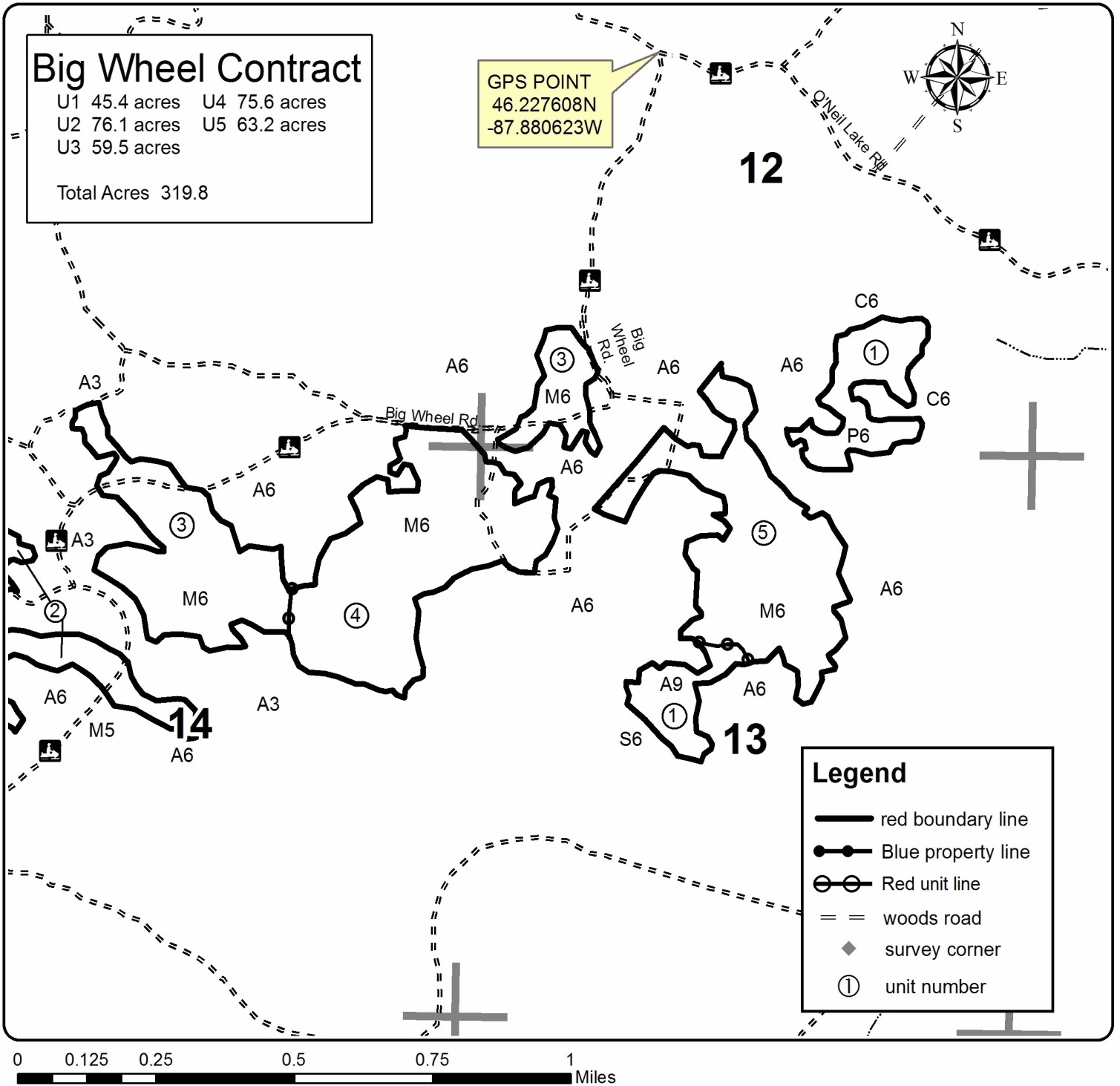
# TIMBER SALE MAP

This information provided by authority of Part 525, 1994 PA 451, as amended.

Sale Number	Year
12-050-16-01	2016

Forest Management Unit <b>CRYSTAL FALLS</b>	County <b>DICKINSON</b>	Mapped By <b>Sebero</b>	Date <b>08/30/2016</b>	Page <b>2</b>	of <b>2</b>
Township <b>44N</b>	Range <b>29W</b>	Section(s) and Subdivision(s) <b>11 SESE,SESW 12 S1/2S1/2 14 N1/2,N1/2SW 13 W1/2NE,E1/2NW,NWNW,NESW 15 W1/2SE,NESE,S1/2NE</b>	Scale <b>1:15,840</b>		
Cruised By <b>Sebero, Pogoreski</b>					

Cover Type				Density	
A = Aspen	H = Hemlock	N = Marsh	U = Upland Brush	0 = Non Stocked	5 = Pole Timber Medium
B = Paper Birch	J = Jack Pine	O = Oak	UM = Upland Mixed	1 = Seedling Sapling Poor	6 = Pole Timber Well
C = Cedar	L = Lowland Brush	P = Lowland Poplar	V = Bog or Marsh	2 = Seedling Sapling Medium	7 = Saw Timber Poor
D = Treed Bog	LM = Lowland Mixed	Q = Mixed Swamp Conifer	W = White Pine	3 = Seedling Sapling Well	8 = Saw Timber Medium
E = Swamp Hdwoods	M = Mpl, Bch, Brch	R = Red Pine	X = Non Stocked	4 = Pole Timber Poor	9 = Saw Timber Well
F = Spruce Fir	MC = Mixed Conifer	S = Black Spruce	Z = Water		
G = Grass	MD = Mixed Deciduous	T = Tamarack			





## TIMBER SALE INFORMATION

Sky Net (12-062-16)

Dickinson County (Advertised Price \$205,459.25)

A timber sale contract for this lump sum, sealed bid timber sale will be awarded to the responsible bidder offering the highest sealed bid price. Bids must be at or above the following advertised price for each species:

<u>PRODUCTS &amp; SPECIES</u>	<u>ESTIMATED UNITS*</u>		<u>ADVERTISED PRICE</u>
<b>Sawtimber</b>			
Basswood	4.10	MBF	\$ 249.00 / MBF
Paper Birch	0.70	MBF	\$ 115.00 / MBF
Red Maple	0.50	MBF	\$ 277.00 / MBF
Red Pine	92.40	MBF	\$ 142.00 / MBF
Sugar Maple	6.20	MBF	\$ 508.00 / MBF
<b>Pulpwood</b>			
Balsam Fir	231.00	Cords	\$ 21.40 / Cord
Basswood	156.00	Cords	\$ 13.05 / Cord
Jack Pine	6.00	Cords	\$ 48.10 / Cord
Mixed Aspen	1,016.00	Cords	\$ 37.95 / Cord
Mixed Hardwood	1,274.00	Cords	\$ 30.55 / Cord
Paper Birch	157.00	Cords	\$ 30.00 / Cord
Red Pine	1,739.00	Cords	\$ 50.00 / Cord
White Pine	147.00	Cords	\$ 29.00 / Cord
White Spruce	255.00	Cords	\$ 28.55 / Cord

\* The total volume is statistically estimated within plus (+) or minus (-) 8.23 percent. The estimated units are final and not subject to adjustment. Prospective bidders are urged to examine this timber and to make their own estimates of quantity and quality.

**BOND AND PAYMENT SCHEDULE:**

1. A bond in the amount of \$15,000.00 to insure faithful performance of the conditions of the contract will be deposited by the successful bidder within 21 days of the sale award.
2. Cutting in any sale or unit without the required advance payment would be considered a trespass.
3. Total payment must be paid in advance or according to the following schedule:
  - (a) Ten percent (10%) of the sale value must be paid within 21 days of the sale award.
  - (b) The 10% down payment will be credited towards the first unit cut.
4. If no cutting takes place, the 10% down payment will not be refunded.
5. Operations on the contract issued will terminate on 06/30/2019.

**Description of Timber by Payment Unit (PU)**

PU	MARKET GROUP	PRODUCT	QUANTITY	UNIT	ACRES	ADVERTISE PRICE				
1	Balsam Fir	Pulpwood	17.0	Cords	27.5	\$20,078.45				
	Mixed Aspen		132.0	Cords						
	<i>B. T. Aspen</i>		34.0	<i>Cords</i>						
	<i>Balsam Poplar</i>		7.0	<i>Cords</i>						
	<i>Quaking Aspen</i>		91.0	<i>Cords</i>						
	Mixed Hardwood		364.0	Cords						
	<i>Ironwood</i>		2.0	<i>Cords</i>						
	<i>Red Maple</i>		268.0	<i>Cords</i>						
	<i>Red Oak</i>		9.0	<i>Cords</i>						
	<i>Sugar Maple</i>		85.0	<i>Cords</i>						
	Paper Birch		90.0	Cords						
	White Spruce		31.0	Cords						
	2		Red Pine	Sawtimber			70.7	MBF	52.8	\$41,410.80
Mixed Aspen		Pulpwood	7.0	Cords						
<i>Quaking Aspen</i>			7.0	<i>Cords</i>						
Red Pine			534.0	Cords						
White Pine		147.0	Cords							
White Spruce		5.0	Cords							
3		Balsam Fir	Pulpwood	76.0	Cords	14.7	\$17,893.55			
	Mixed Aspen	320.0		Cords						
	<i>Balsam Poplar</i>	23.0		<i>Cords</i>						
	<i>Quaking Aspen</i>	297.0		<i>Cords</i>						
	Mixed Hardwood	13.0		Cords						
	<i>Red Maple</i>	13.0		<i>Cords</i>						
	Paper Birch	10.0		Cords						
	White Spruce	120.0		Cords						
4	Basswood	Sawtimber	2.0	MBF	12.4	\$4,574.25				
	Paper Birch		0.1	MBF						
	Red Maple		0.1	MBF						
	Sugar Maple		0.2	MBF						
	Balsam Fir	Pulpwood	2.0	Cords						
	Basswood		7.0	Cords						
	Mixed Aspen		39.0	Cords						
	<i>Quaking Aspen</i>		39.0	<i>Cords</i>						
	Mixed Hardwood		75.0	Cords						
	<i>Ironwood</i>		3.0	<i>Cords</i>						
	<i>Red Maple</i>		13.0	<i>Cords</i>						
	<i>Sugar Maple</i>		59.0	<i>Cords</i>						
	Paper Birch		1.0	Cords						
	5		Balsam Fir	Pulpwood			10.0	Cords	38.9	\$24,215.00
Basswood		136.0	Cords							
Mixed Aspen		265.0	Cords							
<i>B. T. Aspen</i>		3.0	<i>Cords</i>							
<i>Balsam Poplar</i>		7.0	<i>Cords</i>							
<i>Quaking Aspen</i>		255.0	<i>Cords</i>							
Mixed Hardwood		389.0	Cords							
<i>Ironwood</i>		14.0	<i>Cords</i>							
<i>Red Maple</i>		94.0	<i>Cords</i>							
<i>Sugar Maple</i>		281.0	<i>Cords</i>							
White Spruce		10.0	Cords							
6		Balsam Fir	Pulpwood		100.0	Cords	15.1	\$18,671.20		
		Basswood			1.0	Cords				
		Mixed Aspen			178.0	Cords				
	<i>B. T. Aspen</i>	6.0		<i>Cords</i>						
	<i>Balsam Poplar</i>	37.0		<i>Cords</i>						
	<i>Quaking Aspen</i>	135.0		<i>Cords</i>						

**Description of Timber by Payment Unit (PU), con't**

PU	MARKET GROUP	PRODUCT	QUANTITY	UNIT	ACRES	ADVERTISE PRICE
6 con't	Mixed Hardwood	Pulpwood	233.0	Cords		
	<i>Black Ash</i>		4.0	<i>Cords</i>		
	<i>Ironwood</i>		1.0	<i>Cords</i>		
	<i>Red Maple</i>		176.0	<i>Cords</i>		
	<i>Red Oak</i>		6.0	<i>Cords</i>		
	<i>Sugar Maple</i>		44.0	<i>Cords</i>		
	<i>Yellow Birch</i>		2.0	<i>Cords</i>		
	Paper Birch		52.0	Cords		
	White Spruce		38.0	Cords		
7	Red Pine	Sawtimber	21.7	MBF	72.7	\$66,019.75
	Balsam Fir	Pulpwood	21.0	Cords		
	Jack Pine		6.0	Cords		
	Mixed Aspen		9.0	Cords		
	<i>Quaking Aspen</i>		9.0	<i>Cords</i>		
	Mixed Hardwood		5.0	Cords		
	<i>Red Maple</i>		5.0	<i>Cords</i>		
	Red Pine		1,205.0	Cords		
	White Spruce		51.0	Cords		
8	Basswood	Sawtimber	2.1	MBF	18.4	\$12,596.25
	Paper Birch		0.6	MBF		
	Red Maple		0.4	MBF		
	Sugar Maple		6.0	MBF		
	Balsam Fir	Pulpwood	5.0	Cords		
	Basswood		12.0	Cords		
	Mixed Aspen		66.0	Cords		
	<i>Balsam Poplar</i>		10.0	<i>Cords</i>		
	<i>Quaking Aspen</i>		56.0	<i>Cords</i>		
	Mixed Hardwood		195.0	Cords		
	<i>Ironwood</i>		3.0	<i>Cords</i>		
	<i>Red Maple</i>		67.0	<i>Cords</i>		
	<i>Sugar Maple</i>		121.0	<i>Cords</i>		
	<i>Yellow Birch</i>		4.0	<i>Cords</i>		
	Paper Birch		4.0	Cords		
TOTAL:			103.9	MBF		
TOTAL:			4,981.0	Cords		

## Sale Specific Conditions & Requirements

**Sale Name: Sky Net**

**Sale Number: 12-062-16 Seq#: 1**

### 1 - Sale Area

#### 1.2 - Boundaries

##### 1.2.1 - Painted boundaries (1/14)

Timber sale boundary lines against private property are marked with blue paint. Sale boundary lines against state land are marked with double red paint dots. Interior Payment Unit boundaries are marked with double red paint slashes.

### 2 - Timber Specifications

#### 2.1 - Included Timber

##### 2.1.1 - Clearcut unit(s) with unmerchantable trees (6/14)

Within Payment Unit(s) 5, cut all aspen and mixed hardwood trees that are two (2) inches or more at DBH except oak. In addition, cut all spruce, balsam, tamarack and jack pine which meet minimum piece specifications in 2.2 - Utilization.

Within Payment Unit(s) 3 and 6, cut all trees which meet minimum piece specifications in 2.2 - Utilization except red pine, white pine, oak, hemlock and cedar.

##### 2.1.3 - Cut tree marked unit(s) (12/08)

Within Payment Unit(s) 1, cut all trees that are four (4) inches or more at DBH, except red and white pine, cedar, hemlock and trees marked with green paint.

Within Payment Unit(s) 4 and 8, hardwood trees are designated for cutting when marked with orange paint above and below stump height, regardless of merchantability. In addition, cut all aspen, jack pine, spruce and balsam which meet minimum piece specifications in 2.2 - Utilization.

Within Payment Unit(s) 2 and 7, red and white pine are designated for cutting when marked with orange paint above and below stump height, regardless of merchantability. In addition, cut all aspen, jack pine, spruce and balsam which meet minimum piece specifications in 2.2 - Utilization.

#### 2.2 - Utilization

##### 2.2.11 - Chipping restriction (9/14)

If chipping occurs on this sale, then no woody debris present on the ground at the start of the sale may be chipped. In addition, brush or chips may not be stored or stockpiled on-site for more than 60 days past the sale expiration date. Residual chip depth at the landing may not exceed 4 inches.

#### 2.3 - Log Rule

##### 2.3.1 - Log rule (12/08)

All board foot volumes of sawlog size products in this contract have been determined by the Scribner Decimal C Log Rule.

### 4 - Transportation

#### 4.1 - Construction

##### 4.1.3 - Slash and earthen piles (8/04)

Piles or windrows of earth along roads and landings that have been widened or constructed shall be leveled. Slash from road maintenance or construction, including stumps, shall be removed at least ten feet from the edge of the road and not left in piles.

##### 4.1.6 - Road construction (1/09)

Improvements of existing roads shall be done in such a way as to minimize the environmental and visual impacts. Merchantable trees shall be cut and utilized unless otherwise directed. Non-merchantable trees shall be severed and laid flat on the ground. Slash shall be scattered, and not left in windrows. Stumps shall be set upright, not left on edge, and be moved at least 10 feet away from the road edge. Disturbed soil shall be feathered into the woods and not left in berms or windrows.

#### 4.1.7 - Road closure (10/11)

All new roads built into the sale must be blocked to vehicle traffic within 60 days of the sale expiration. Overgrown roads that are reopened shall be considered new roads. In general, this will require constructing a four foot high berm of stumps and logs covered with dirt. Contact the sale administrator for specific design and placement.

### 5 - Operations

#### 5.1 - Notification

##### 5.1.1 - Pre-sale conference (10/11)

A pre-sale conference on site between the Purchaser and sale administrator is required prior to beginning any operations to determine landing and road locations. The Unit Manager or his/her representative must be contacted at least 10 days in advance to schedule the conference.

##### 5.1.4 - Post-sale conference (6/11)

A post-sale conference on site between the Purchaser and sale administrator is required 5 days prior to the completion of active logging operations to determine clean-up and repair of landings, road edges, and the fulfillment of other contract specifications.

#### 5.2 - Conduct of Operations

##### 5.2.1 - Slash

###### 5.2.1.1 - Slash within sale area (2/04)

No trees are to be felled outside the sale area and all slash is to be kept at least 10 feet back from the blue and red paint line.

###### 5.2.1.8 - Slash height (12/08)

No slash or tree tops may exceed 36 inches in height.

##### 5.2.2 - Hazard Trees/Snags

###### 5.2.2.1 - Den trees (2/04)

Obvious hollow and/or den trees shall be protected and left standing unless they are a safety hazard.

##### 5.2.3 - Operating Restrictions

###### 5.2.3.1 - Operating restrictions (9/11)

Within Payment Unit(s) 1, 2, 4, 5, 7 and 8, unless changed by written agreement, cutting, skidding, and hauling are not permitted from March 31 to June 1. This restriction is to avoid spring break up conditions.

###### 5.2.3.3 - Bark slippage restriction (3/09)

Within Payment Unit(s) 1, 2, 4, 5, 7 and 8, unless changed by written agreement, cutting and skidding are not permitted during the period of April 15 to July 15. This restriction is because of bark slippage.

##### 5.2.38 - No decking against live trees (2/04)

Cut products may not be decked against unmarked or designated leave trees.

##### 5.2.41 - Snowmobile trail protection (9/11)

The Big Wheel Road is a snowmobile trail and is shown on the Timber Sale Map. Do not cut or damage posts with orange trail markers or traffic control signs. The road must be maintained and restored to a condition equal to or better than before the sale. The road maintenance/restoration must be done prior to December 1. If hauling during the snowmobile season, then a snow covered base must be left on the trail and signs must be placed at each end of the trail. Maintain a 20 foot wide slash, debris, and rut free zone daily using the snowmobile trail as the centerline. No decking of forest products will be permitted along the snowmobile trail during the snowmobile season.

#### 5.4 - Soil Protection

##### 5.4.1 - Rutting restriction, general (7/16)

Operations are to cease immediately if equipment and weather conditions result in rutting of roads and/or skid trails which is 12 inches or greater in depth and 50 feet in length. The Unit Manager or his/her representative may restrict hauling and/or

skidding if ruts exceed the specified depth. With the Unit Manager or his/her representative's approval, the Purchaser may return to the area when the risk of rutting has decreased.

#### 5.8 - Protection of Endangered Species

##### 5.8.5 - Protection of raptor nests (3/13)

All trees with raptor nests will be protected if found during harvesting operations. Notification will be made to the Unit Manager or his/her representative who will notify the Wildlife Biologist so an on-site evaluation and recommendation can be made, if necessary.

### **6 - Safety and Fire Prevention**

#### 6.2 - Signing

##### 6.2.2 - Snowmobile trail posting (8/09)

The Purchaser is responsible for posting and maintaining caution signs on Big Wheel Road prior to beginning operations during the snowmobile season (approximately December 1 to March 31). The trail must be posted at appropriate distances from the sale area to warn of logging activity and truck traffic. Signs must be removed when harvest operations are suspended or completed. The Purchaser will provide these signs.



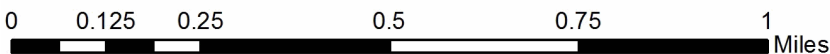
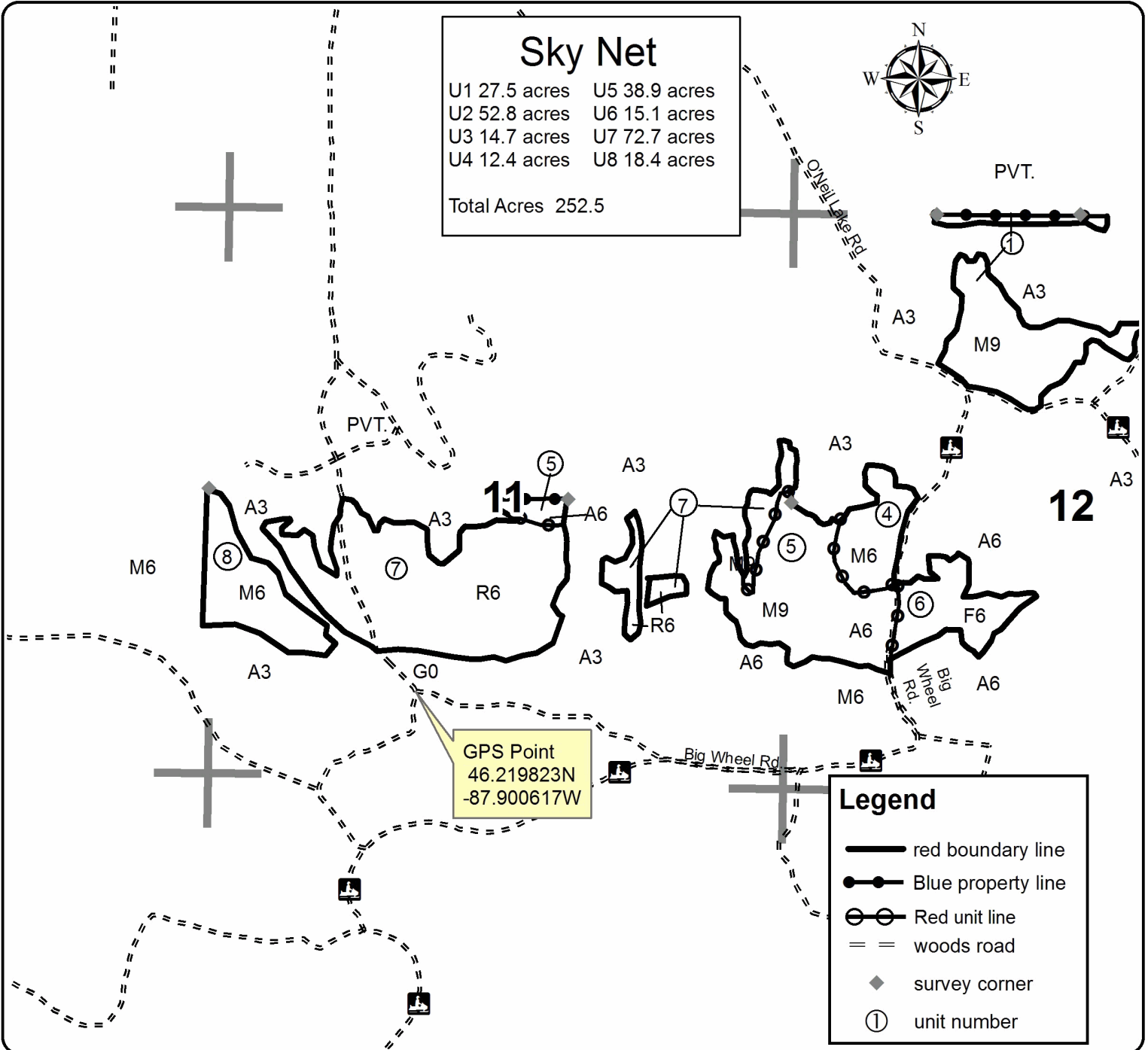
# TIMBER SALE MAP

This information provided by authority of Part 525, 1994 PA 451, as amended.

Sale Number	Year
12-062-16-01	2016

Forest Management Unit <b>CRYSTAL FALLS</b>		County <b>DICKINSON</b>	Mapped By <b>Sebero</b>	Date <b>08/30/2016</b>	Page <b>1</b>	of <b>2</b>
Township <b>44N</b>	Range <b>29W</b>	Section(s) and Subdivision(s) 1 SWSW 10 NES 11 N1/2SE,E1/2SW,SESE,SWSW 12 N1/2 SW1/4 N1/2SE SESE		Scale <b>1:15,840</b>		

Cover Type				Density	
A = Aspen	H = Hemlock	N = Marsh	U = Upland Brush	0 = Non Stocked	5 = Pole Timber Medium
B = Paper Birch	J = Jack Pine	O = Oak	UM = Upland Mixed	1 = Seedling Sapling Poor	6 = Pole Timber Well
C = Cedar	L = Lowland Brush	P = Lowland Poplar	V = Bog or Marsh	2 = Seedling Sapling Medium	7 = Saw Timber Poor
D = Treed Bog	LM = Lowland Mixed	Q = Mixed Swamp Conifer	W = White Pine	3 = Seedling Sapling Well	8 = Saw Timber Medium
E = Swamp Hdwoods	M = Mpl, Bch, Brch	R = Red Pine	X = Non Stocked	4 = Pole Timber Poor	9 = Saw Timber Well
F = Spruce Fir	MC = Mixed Conifer	S = Black Spruce	Z = Water		
G = Grass	MD = Mixed Deciduous	T = Tamarack			





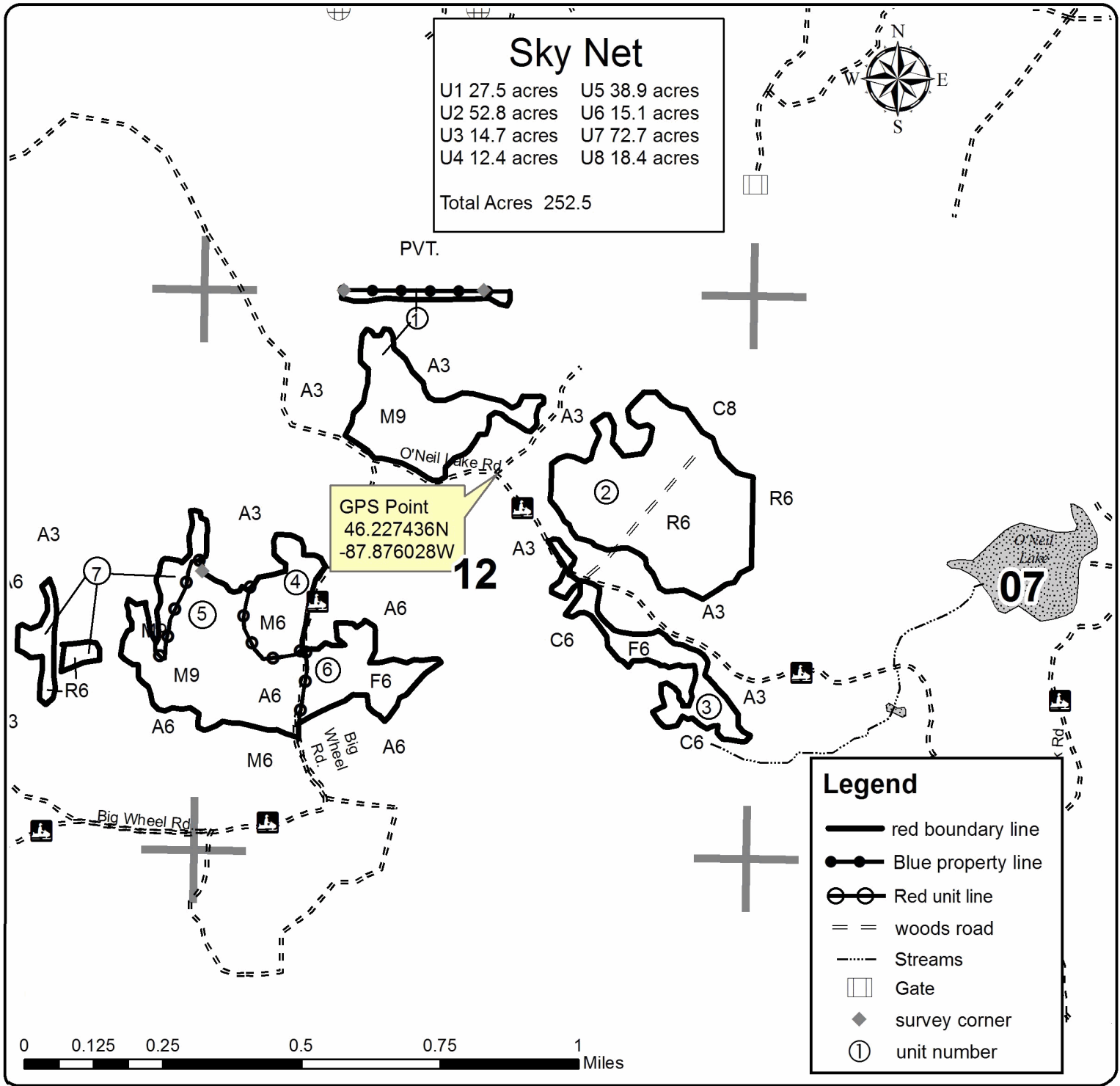
# TIMBER SALE MAP

This information provided by authority of Part 525, 1994 PA 451, as amended.

Sale Number	Year
12-062-16-01	2016

Forest Management Unit <b>CRYSTAL FALLS</b>		County <b>DICKINSON</b>	Mapped By <b>Sebero</b>	Date <b>08/30/2016</b>	Page <b>2</b>	of <b>2</b>
Township <b>44N</b>	Range <b>29W</b>	Section(s) and Subdivision(s) 1 SWSW 10 NES 11 N1/2SE, E1/2SW, SESE, SWSW 12 N1/2 SW1/4 N1/2SE SESE		Scale <b>1:15,840</b>		

Cover Type				Density			
A = Aspen	H = Hemlock	N = Marsh	U = Upland Brush	0 = Non Stocked	5 = Pole Timber Medium		
B = Paper Birch	J = Jack Pine	O = Oak	UM = Upland Mixed	1 = Seedling Sapling Poor	6 = Pole Timber Well		
C = Cedar	L = Lowland Brush	P = Lowland Poplar	V = Bog or Marsh	2 = Seedling Sapling Medium	7 = Saw Timber Poor		
D = Tread Bog	LM = Lowland Mixed	Q = Mixed Swamp Conifer	W = White Pine	3 = Seedling Sapling Well	8 = Saw Timber Medium		
E = Swamp Hdwoods	M = Mpl, Bch, Brch	R = Red Pine	X = Non Stocked	4 = Pole Timber Poor	9 = Saw Timber Well		
F = Spruce Fir	MC = Mixed Conifer	S = Black Spruce	Z = Water				
G = Grass	MD = Mixed Deciduous	T = Tamarack					





**TIMBER SALE INFORMATION**

Grouse Covey SBW (12-063-16)

Dickinson County (Advertised Price \$19,773.60)

A timber sale contract for this lump sum, sealed bid timber sale will be awarded to the responsible bidder offering the highest sealed bid price. Bids must be at or above the following advertised price for each species:

<u>PRODUCTS &amp; SPECIES</u>	<u>ESTIMATED UNITS*</u>	<u>ADVERTISED PRICE</u>
Pulpwood		
Balsam Fir	159.00 Cords	\$ 18.55 / Cord
Mixed Aspen	321.00 Cords	\$ 32.90 / Cord
Mixed Hardwood	213.00 Cords	\$ 26.50 / Cord
White Spruce	25.00 Cords	\$ 24.75 / Cord

\* The total volume is statistically estimated within plus (+) or minus (-) 13.48 percent. The estimated units are final and not subject to adjustment. Prospective bidders are urged to examine this timber and to make their own estimates of quantity and quality.

**BOND AND PAYMENT SCHEDULE:**

1. A bond in the amount of \$1,500.00 to insure faithful performance of the conditions of the contract will be deposited by the successful bidder within 21 days of the sale award.
2. Cutting in any sale or unit without the required advance payment would be considered a trespass.
3. Total payment must be paid in advance or according to the following schedule:
  - (a) Ten percent (10%) of the sale value must be paid within 21 days of the sale award.
  - (b) The remainder is due before cutting begins.
4. If no cutting takes place, the 10% down payment will not be refunded.
5. Operations on the contract issued will terminate on 06/30/2019.

**Description of Timber by Payment Unit (PU)**

PU	MARKET GROUP	PRODUCT	QUANTITY	UNIT	ACRES	ADVERTISE PRICE			
1	Balsam Fir	Pulpwood	159.0	Cords	22.4	\$19,773.60			
	Mixed Aspen		321.0	Cords					
	<i>B. T. Aspen</i>		23.0	<i>Cords</i>					
	<i>Balsam Poplar</i>		67.0	<i>Cords</i>					
	<i>Quaking Aspen</i>		231.0	<i>Cords</i>					
	Mixed Hardwood		213.0	Cords					
	<i>Black Ash</i>		1.0	<i>Cords</i>					
	<i>Paper Birch</i>		115.0	<i>Cords</i>					
	<i>Red Maple</i>		95.0	<i>Cords</i>					
	<i>Yellow Birch</i>		2.0	<i>Cords</i>					
	White Spruce		25.0	Cords					
<b>TOTAL:</b>			718.0	Cords					

## Sale Specific Conditions & Requirements

**Sale Name: Grouse Covey SBW**

**Sale Number: 12-063-16 Seq#: 1**

### 1 - Sale Area

#### 1.2 - Boundaries

##### 1.2.1 - Painted boundaries (1/14)

Timber sale boundary lines against private property are marked with blue paint. Sale boundary lines against state land are marked with double red paint dots.

### 2 - Timber Specifications

#### 2.1 - Included Timber

##### 2.1.1 - Clearcut unit(s) with unmerchantable trees (6/14)

Within Payment Unit(s) 1, cut all aspen and mixed hardwood trees that are two (2) inches or more at DBH except oak. In addition, cut all spruce, balsam, tamarack and jack pine which meet minimum piece specifications in 2.2 - Utilization.

#### 2.2 - Utilization

##### 2.2.11 - Chipping restriction (9/14)

If chipping occurs on this sale, then no woody debris present on the ground at the start of the sale may be chipped. In addition, brush or chips may not be stored or stockpiled on-site for more than 60 days past the sale expiration date. Residual chip depth at the landing may not exceed 4 inches.

### 4 - Transportation

#### 4.1 - Construction

##### 4.1.3 - Slash and earthen piles (8/04)

Piles or windrows of earth along roads and landings that have been widened or constructed shall be leveled. Slash from road maintenance or construction, including stumps, shall be removed at least ten feet from the edge of the road and not left in piles.

##### 4.1.6 - Road construction (1/09)

Improvements of existing roads shall be done in such a way as to minimize the environmental and visual impacts. Merchantable trees shall be cut and utilized unless otherwise directed. Non-merchantable trees shall be severed and laid flat on the ground. Slash shall be scattered, and not left in windrows. Stumps shall be set upright, not left on edge, and be moved at least 10 feet away from the road edge. Disturbed soil shall be feathered into the woods and not left in berms or windrows.

##### 4.1.7 - Road closure (10/11)

All new roads built into the sale must be blocked to vehicle traffic within 60 days of the sale expiration. Overgrown roads that are reopened shall be considered new roads. In general, this will require constructing a four foot high berm of stumps and logs covered with dirt. Contact the sale administrator for specific design and placement.

### 5 - Operations

#### 5.1 - Notification

##### 5.1.1 - Pre-sale conference (10/11)

A pre-sale conference on site between the Purchaser and sale administrator is required prior to beginning any operations to determine landing and road locations. The Unit Manager or his/her representative must be contacted at least 10 days in advance to schedule the conference.

##### 5.1.4 - Post-sale conference (6/11)

A post-sale conference on site between the Purchaser and sale administrator is required 5 days prior to the completion of active logging operations to determine clean-up and repair of landings, road edges, and the fulfillment of other contract specifications.

#### 5.2 - Conduct of Operations

## 5.2.1 - Slash

### 5.2.1.1 - Slash within sale area (9/16)

No trees are to be felled outside the sale area and all slash is to be kept at least 10 feet back from the blue and red paint line. If sale boundary lines are along a public road or highway, then slash must be removed 50' from these lines per General Condition & Requirement 5.2.1.

### 5.2.1.8 - Slash height (12/08)

No slash or tree tops may exceed 36 inches in height.

## 5.2.2 - Hazard Trees/Snags

### 5.2.2.1 - Den trees (2/04)

Obvious hollow and/or den trees shall be protected and left standing unless they are a safety hazard.

### 5.2.38 - No decking against live trees (2/04)

Cut products may not be decked against unmarked or designated leave trees.

## 5.4 - Soil Protection

### 5.4.1 - Rutting restriction, general (7/16)

Operations are to cease immediately if equipment and weather conditions result in rutting of roads and/or skid trails which is 12 inches or greater in depth and 50 feet in length. The Unit Manager or his/her representative may restrict hauling and/or skidding if ruts exceed the specified depth. With the Unit Manager or his/her representative's approval, the Purchaser may return to the area when the risk of rutting has decreased.

## 5.8 - Protection of Endangered Species

### 5.8.5 - Protection of raptor nests (3/13)

All trees with raptor nests will be protected if found during harvesting operations. Notification will be made to the Unit Manager or his/her representative who will notify the Wildlife Biologist so an on-site evaluation and recommendation can be made, if necessary.



# TIMBER SALE MAP

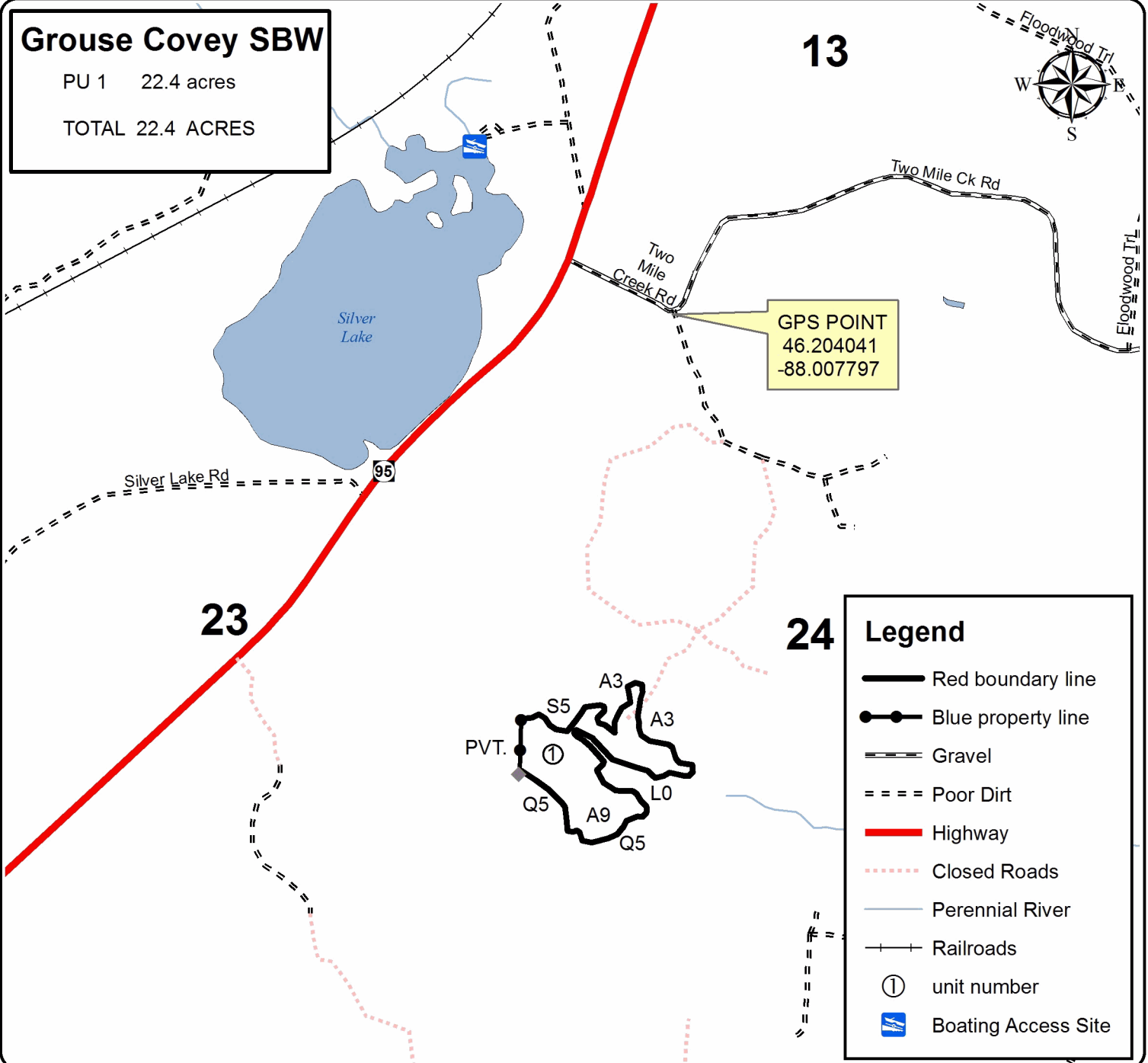
This information provided by authority of Part 525, 1994 PA 451, as amended.

Sale Number	Year
12-063-16-01	2016

Forest Management Unit <b>CRYSTAL FALLS</b>	County <b>Dickinson</b>	Mapped By <b>SCOTT SEBERO</b>	Date <b>09/28/2016</b>	Page <b>1</b>	of <b>1</b>
Cruised By <b>SCOTT SEBERO</b>					

Township <b>44 N</b>	Range <b>30W</b>	Section(s) and Subdivision(s) <b>24 N1/2SW,SWSW</b>	Scale <b>1:15,840</b>
-------------------------	---------------------	--	--------------------------

Cover Type				Density	
A = Aspen	H = Hemlock	N = Marsh	U = Upland Brush	0 = Non Stocked	5 = Pole Timber Medium
B = Paper Birch	J = Jack Pine	O = Oak	UM = Upland Mixed	1 = Seedling Sapling Poor	6 = Pole Timber Well
C = Cedar	L = Lowland Brush	P = Lowland Poplar	V = Bog or Marsh	2 = Seedling Sapling Medium	7 = Saw Timber Poor
D = Treed Bog	LM = Lowland Mixed	Q = Mixed Swamp Conifer	W = White Pine	3 = Seedling Sapling Well	8 = Saw Timber Medium
E = Swamp Hdwoods	M = Mpl, Bch, Brch	R = Red Pine	X = Non Stocked	4 = Pole Timber Poor	9 = Saw Timber Well
F = Spruce Fir	MC = Mixed Conifer	S = Black Spruce	Z = Water		
G = Grass	MD = Mixed Deciduous	T = Tamarack			



Big Wheel Contract (12-050-16)  
 ; Dickinson COUNTY

In response to the notice of sale to be held 8:30 a.m. (local time) on July 26, 2017, I am hereby submitting my sealed bid (firm offer) for the following forest products to be cut. Bids for individual species must be at or above the advertised price. All non-responsive bid forms may be rejected.

<u>PRODUCTS &amp; SPECIES</u>	<u>ESTIMATED VOLUME*</u>	<u>ADVERTISED PRICE</u>	<u>BID PRICE</u>
<b>Sawtimber</b>			
Basswood	22.10 MBF	\$ 249.00/MBF	\$ _____
Paper Birch	0.30 MBF	\$ 115.00/MBF	\$ _____
Red Maple	0.80 MBF	\$ 277.00/MBF	\$ _____
Sugar Maple	1.60 MBF	\$ 508.00/MBF	\$ _____
White Ash	1.50 MBF	\$ 87.00/MBF	\$ _____
<b>Pulpwood</b>			
Balsam Fir	332.00 Cords	\$ 21.40/Cord	\$ _____
Basswood	227.00 Cords	\$ 13.05/Cord	\$ _____
Mixed Aspen	1,536.00 Cords	\$ 37.95/Cord	\$ _____
Mixed Hardwood	1,810.00 Cords	\$ 30.55/Cord	\$ _____
Mixed Spruce	205.00 Cords	\$ 28.55/Cord	\$ _____
Tamarack	3.00 Cords	\$ 14.00/Cord	\$ _____

\*The volumes are statistically estimated within plus (+) or minus (-) 8.39 percent. These estimated volumes are final and not subject to adjustment. Prospective bidders are urged to examine this timber and to make their own estimates of quantity and quality.

I understand that any or all bids may be rejected. All bids must be signed and all bid items must be bid or the bid form may be rejected. I also understand that consideration and awarding a contract will be based upon my past performance and ability to complete the contract based upon equipment and staffing subject to my control.

FEDERAL ID: \_\_\_\_\_ or SOCIAL SECURITY NUMBER: \_\_\_\_\_

Company or individual bidding: \_\_\_\_\_

Company representative's name: \_\_\_\_\_

Address: \_\_\_\_\_

City: \_\_\_\_\_ State: \_\_\_\_\_ Zip: \_\_\_\_\_

IF AVAILABLE, PLEASE PLACE THE PERSONALIZED LABEL FROM YOUR PROSPECTUS IN THE ABOVE BOX.

Individual or company representative's signature: \_\_\_\_\_ Date: \_\_\_\_\_

Phone number : \_\_\_\_\_ Email (optional): \_\_\_\_\_

**THE WINNING BIDDER MUST COMPLETE THE VERIFICATION OF WORKER'S DISABILITY COMPENSATION ACT COMPLIANCE (ON REVERSE SIDE IF DOUBLE SIDED) WITHIN 21 DAYS OF SALE AWARD DATE**



<b>FOR DEPARTMENT USE ONLY</b>
Sale Number (XX - XXX - XX - XX)
Forest Management Unit:

## TIMBER SALE VERIFICATION OF WORKER'S DISABILITY COMPENSATION ACT COMPLIANCE

*As required by Act 317, P.A. 1969 (Worker's Compensation) and  
Part 5 of Act 451 of 1994, as amended.*

### VERIFICATION OF WORKER'S DISABILITY COMPENSATION ACT COMPLIANCE

- This verification must be completed and submitted within 21 days of contract award and prior to the issuance of the timber sale contract.
- In addition, if boxes 2B or 2C are checked, then Notice of Exclusion or Certificate of Insurance must be submitted within twenty-one (21) days of the contract award and prior to the issuance of the timber sale contract.
- All information must be typed or printed except for written signatures.

Please Check Appropriate Categories:

1. My business is organized as (you **must** check one of the boxes below):
  - A.  Sole Proprietorship (individual)
  - B.  Partnership
  - C.  Corporation
  
2. You **must** check one of the boxes below:
  - A.  I certify my business is a sole proprietorship and it has no employees but the sole proprietor. I am not subject to the Worker's Compensation Laws.
  - B.  I certify my business has satisfied its obligation to the Worker's Compensation Act through the use of an approved Notice of Exclusion (BWC-337, Rev. 5/96). I will provide a copy of the Notice of Exclusion within 21 days of the contract award. (For questions or a copy of the BWC-337, please call the Worker's Compensation Bureau at 517-322-1195).
  - C.  I certify my business has a Worker's Compensation Policy. I will provide an original Certificate of Insurance within twenty-one (21) days of the contract award.
  
3. If you have checked item 2(A) or 2(B), you **must** indicate the number of **both** full-time and part-time employees, other than yourself, including family members and active partners (if none, you must enter "0").

\_\_\_\_\_ Full-time Employees

\_\_\_\_\_ Part-time Employees

Name of Business		Federal ID (or) Social Security No.	
Address		Telephone (       )	
City	State	ZIP	

*I hereby certify that the above information is true and correct. I agree to notify the Michigan DNR of any changes that occur in factors affecting my coverage during any of my present and future operations.*

\_\_\_\_\_  
Signature of Owner or Authorized Representative

\_\_\_\_\_  
Title

\_\_\_\_\_  
Date

**Please complete the "SEALED BID" information on the next page**

Sky Net (12-062-16)  
 ; Dickinson COUNTY

In response to the notice of sale to be held 8:30 a.m. (local time) on July 26, 2017, I am hereby submitting my sealed bid (firm offer) for the following forest products to be cut. Bids for individual species must be at or above the advertised price. All non-responsive bid forms may be rejected.

<u>PRODUCTS &amp; SPECIES</u>	<u>ESTIMATED VOLUME*</u>	<u>ADVERTISED PRICE</u>	<u>BID PRICE</u>
<b>Sawtimber</b>			
Basswood	4.10 MBF	\$ 249.00/MBF	\$ _____
Paper Birch	0.70 MBF	\$ 115.00/MBF	\$ _____
Red Maple	0.50 MBF	\$ 277.00/MBF	\$ _____
Red Pine	92.40 MBF	\$ 142.00/MBF	\$ _____
Sugar Maple	6.20 MBF	\$ 508.00/MBF	\$ _____
<b>Pulpwood</b>			
Balsam Fir	231.00 Cords	\$ 21.40/Cord	\$ _____
Basswood	156.00 Cords	\$ 13.05/Cord	\$ _____
Jack Pine	6.00 Cords	\$ 48.10/Cord	\$ _____
Mixed Aspen	1,016.00 Cords	\$ 37.95/Cord	\$ _____
Mixed Hardwood	1,274.00 Cords	\$ 30.55/Cord	\$ _____
Paper Birch	157.00 Cords	\$ 30.00/Cord	\$ _____
Red Pine	1,739.00 Cords	\$ 50.00/Cord	\$ _____
White Pine	147.00 Cords	\$ 29.00/Cord	\$ _____
White Spruce	255.00 Cords	\$ 28.55/Cord	\$ _____

\*The volumes are statistically estimated within plus (+) or minus (-) 8.23 percent. These estimated volumes are final and not subject to adjustment. Prospective bidders are urged to examine this timber and to make their own estimates of quantity and quality.

I understand that any or all bids may be rejected. All bids must be signed and all bid items must be bid or the bid form may be rejected. I also understand that consideration and awarding a contract will be based upon my past performance and ability to complete the contract based upon equipment and staffing subject to my control.

FEDERAL ID: \_\_\_\_\_ or SOCIAL SECURITY NUMBER: \_\_\_\_\_

Company or individual bidding: \_\_\_\_\_

Company representative's name: \_\_\_\_\_

Address: \_\_\_\_\_

City: \_\_\_\_\_ State: \_\_\_\_\_ Zip: \_\_\_\_\_

IF AVAILABLE, PLEASE PLACE THE PERSONALIZED LABEL FROM YOUR PROSPECTUS IN THE ABOVE BOX.

Individual or company representative's signature: \_\_\_\_\_ Date: \_\_\_\_\_

Phone number : \_\_\_\_\_ Email (optional): \_\_\_\_\_

**THE WINNING BIDDER MUST COMPLETE THE VERIFICATION OF WORKER'S DISABILITY COMPENSATION ACT COMPLIANCE (ON REVERSE SIDE IF DOUBLE SIDED) WITHIN 21 DAYS OF SALE AWARD DATE**



<b>FOR DEPARTMENT USE ONLY</b>
Sale Number (XX - XXX - XX - XX)
Forest Management Unit:

## TIMBER SALE VERIFICATION OF WORKER'S DISABILITY COMPENSATION ACT COMPLIANCE

*As required by Act 317, P.A. 1969 (Worker's Compensation) and  
Part 5 of Act 451 of 1994, as amended.*

### VERIFICATION OF WORKER'S DISABILITY COMPENSATION ACT COMPLIANCE

- This verification must be completed and submitted within 21 days of contract award and prior to the issuance of the timber sale contract.
- In addition, if boxes 2B or 2C are checked, then Notice of Exclusion or Certificate of Insurance must be submitted within twenty-one (21) days of the contract award and prior to the issuance of the timber sale contract.
- All information must be typed or printed except for written signatures.

Please Check Appropriate Categories:

1. My business is organized as (you **must** check one of the boxes below):
  - A.  Sole Proprietorship (individual)
  - B.  Partnership
  - C.  Corporation
  
2. You **must** check one of the boxes below:
  - A.  I certify my business is a sole proprietorship and it has no employees but the sole proprietor. I am not subject to the Worker's Compensation Laws.
  - B.  I certify my business has satisfied its obligation to the Worker's Compensation Act through the use of an approved Notice of Exclusion (BWC-337, Rev. 5/96). I will provide a copy of the Notice of Exclusion within 21 days of the contract award. (For questions or a copy of the BWC-337, please call the Worker's Compensation Bureau at 517-322-1195).
  - C.  I certify my business has a Worker's Compensation Policy. I will provide an original Certificate of Insurance within twenty-one (21) days of the contract award.
  
3. If you have checked item 2(A) or 2(B), you **must** indicate the number of **both** full-time and part-time employees, other than yourself, including family members and active partners (if none, you must enter "0").

\_\_\_\_\_ Full-time Employees                      \_\_\_\_\_ Part-time Employees

Name of Business		Federal ID (or) Social Security No.	
Address		Telephone (       )	
City	State	ZIP	

*I hereby certify that the above information is true and correct. I agree to notify the Michigan DNR of any changes that occur in factors affecting my coverage during any of my present and future operations.*

\_\_\_\_\_  
Signature of Owner or Authorized Representative

\_\_\_\_\_    \_\_\_\_\_  
Title    Date

**Please complete the "SEALED BID" information on the next page**



Grouse Covey SBW (12-063-16)  
; Dickinson COUNTY

In response to the notice of sale to be held 8:30 a.m. (local time) on July 26, 2017, I am hereby submitting my sealed bid (firm offer) for the following forest products to be cut. Bids for individual species must be at or above the advertised price. All non-responsive bid forms may be rejected.

<u>PRODUCTS &amp; SPECIES</u>	<u>ESTIMATED VOLUME*</u>	<u>ADVERTISED PRICE</u>	<u>BID PRICE</u>
Pulpwood			
Balsam Fir	159.00 Cords	\$ 18.55/Cord	\$ _____
Mixed Aspen	321.00 Cords	\$ 32.90/Cord	\$ _____
Mixed Hardwood	213.00 Cords	\$ 26.50/Cord	\$ _____
White Spruce	25.00 Cords	\$ 24.75/Cord	\$ _____

\*The volumes are statistically estimated within plus (+) or minus (-) 13.48 percent. These estimated volumes are final and not subject to adjustment. Prospective bidders are urged to examine this timber and to make their own estimates of quantity and quality.

I understand that any or all bids may be rejected. All bids must be signed and all bid items must be bid or the bid form may be rejected. I also understand that consideration and awarding a contract will be based upon my past performance and ability to complete the contract based upon equipment and staffing subject to my control.

FEDERAL ID: \_\_\_\_ - \_\_\_\_ - \_\_\_\_ or SOCIAL SECURITY NUMBER: \_\_\_\_ - \_\_\_\_ - \_\_\_\_

Company or individual bidding: \_\_\_\_\_

Company representative's name: \_\_\_\_\_

Address: \_\_\_\_\_

City: \_\_\_\_\_ State: \_\_\_\_\_ Zip: \_\_\_\_\_

IF AVAILABLE, PLEASE PLACE THE PERSONALIZED LABEL FROM YOUR PROSPECTUS IN THE ABOVE BOX.

Individual or company representative's signature: \_\_\_\_\_ Date: \_\_\_\_\_

Phone number : \_\_\_\_\_ Email (optional): \_\_\_\_\_

**THE WINNING BIDDER MUST COMPLETE THE VERIFICATION OF WORKER'S DISABILITY COMPENSATION ACT COMPLIANCE (ON REVERSE SIDE IF DOUBLE SIDED) WITHIN 21 DAYS OF SALE AWARD DATE**



Floodwood Mix (12-053-17)  
 ; Dickinson COUNTY

In response to the notice of sale to be held 8:30 a.m. (local time) on July 26, 2017, I am hereby submitting my sealed bid (firm offer) for the following forest products to be cut. Bids for individual species must be at or above the advertised price. All non-responsive bid forms may be rejected.

<u>PRODUCTS &amp; SPECIES</u>	<u>ESTIMATED VOLUME*</u>	<u>ADVERTISED PRICE</u>	<u>BID PRICE</u>
<b>Sawtimber</b>			
Red Pine	1.70 MBF	\$ 142.00/MBF	\$ _____
White Pine	26.30 MBF	\$ 62.00/MBF	\$ _____
<b>Pulpwood</b>			
Balsam Fir	4.00 Cords	\$ 21.40/Cord	\$ _____
Jack Pine	288.00 Cords	\$ 48.10/Cord	\$ _____
Mixed Aspen	2,467.00 Cords	\$ 37.95/Cord	\$ _____
Mixed Hardwood	517.00 Cords	\$ 30.55/Cord	\$ _____
Red Pine	41.00 Cords	\$ 50.00/Cord	\$ _____
White Pine	67.00 Cords	\$ 29.00/Cord	\$ _____
White Spruce	6.00 Cords	\$ 28.55/Cord	\$ _____

\*The volumes are statistically estimated within plus (+) or minus (-) 7.03 percent. These estimated volumes are final and not subject to adjustment. Prospective bidders are urged to examine this timber and to make their own estimates of quantity and quality.

I understand that any or all bids may be rejected. All bids must be signed and all bid items must be bid or the bid form may be rejected. I also understand that consideration and awarding a contract will be based upon my past performance and ability to complete the contract based upon equipment and staffing subject to my control.

FEDERAL ID: \_\_\_\_ - \_\_\_\_ - \_\_\_\_ or SOCIAL SECURITY NUMBER: \_\_\_\_ - \_\_\_\_ - \_\_\_\_  
 Company or individual bidding: \_\_\_\_\_  
 Company representative's name: \_\_\_\_\_  
 Address: \_\_\_\_\_  
 City: \_\_\_\_\_ State: \_\_\_\_\_ Zip: \_\_\_\_\_

IF AVAILABLE, PLEASE PLACE THE PERSONALIZED LABEL FROM YOUR PROSPECTUS IN THE ABOVE BOX.

Individual or company representative's signature: \_\_\_\_\_ Date: \_\_\_\_\_

Phone number : \_\_\_\_\_ Email (optional): \_\_\_\_\_

**THE WINNING BIDDER MUST COMPLETE THE VERIFICATION OF WORKER'S DISABILITY COMPENSATION ACT COMPLIANCE (ON REVERSE SIDE IF DOUBLE SIDED) WITHIN 21 DAYS OF SALE AWARD DATE**



<b>FOR DEPARTMENT USE ONLY</b>
Sale Number (XX - XXX - XX - XX)
Forest Management Unit:

## TIMBER SALE VERIFICATION OF WORKER'S DISABILITY COMPENSATION ACT COMPLIANCE

*As required by Act 317, P.A. 1969 (Worker's Compensation) and  
Part 5 of Act 451 of 1994, as amended.*

### VERIFICATION OF WORKER'S DISABILITY COMPENSATION ACT COMPLIANCE

- This verification must be completed and submitted within 21 days of contract award and prior to the issuance of the timber sale contract.
- In addition, if boxes 2B or 2C are checked, then Notice of Exclusion or Certificate of Insurance must be submitted within twenty-one (21) days of the contract award and prior to the issuance of the timber sale contract.
- All information must be typed or printed except for written signatures.

Please Check Appropriate Categories:

1. My business is organized as (you **must** check one of the boxes below):
  - A.  Sole Proprietorship (individual)
  - B.  Partnership
  - C.  Corporation
  
2. You **must** check one of the boxes below:
  - A.  I certify my business is a sole proprietorship and it has no employees but the sole proprietor. I am not subject to the Worker's Compensation Laws.
  - B.  I certify my business has satisfied its obligation to the Worker's Compensation Act through the use of an approved Notice of Exclusion (BWC-337, Rev. 5/96). I will provide a copy of the Notice of Exclusion within 21 days of the contract award. (For questions or a copy of the BWC-337, please call the Worker's Compensation Bureau at 517-322-1195).
  - C.  I certify my business has a Worker's Compensation Policy. I will provide an original Certificate of Insurance within twenty-one (21) days of the contract award.
  
3. If you have checked item 2(A) or 2(B), you **must** indicate the number of **both** full-time and part-time employees, other than yourself, including family members and active partners (if none, you must enter "0").

\_\_\_\_\_ Full-time Employees

\_\_\_\_\_ Part-time Employees

Name of Business		Federal ID (or) Social Security No.	
Address		Telephone (       )	
City	State	ZIP	

*I hereby certify that the above information is true and correct. I agree to notify the Michigan DNR of any changes that occur in factors affecting my coverage during any of my present and future operations.*

\_\_\_\_\_  
Signature of Owner or Authorized Representative

\_\_\_\_\_  
Title

\_\_\_\_\_  
Date

**Please complete the "SEALED BID" information on the next page**

Parlamee Mix (12-054-17)  
; Dickinson COUNTY

In response to the notice of sale to be held 8:30 a.m. (local time) on July 26, 2017, I am hereby submitting my sealed bid (firm offer) for the following forest products to be cut. Bids for individual species must be at or above the advertised price. All non-responsive bid forms may be rejected.

<u>PRODUCTS &amp; SPECIES</u>	<u>ESTIMATED VOLUME*</u>	<u>ADVERTISED PRICE</u>	<u>BID PRICE</u>
Sawtimber			
Red Pine	40.10 MBF	\$ 142.00/MBF	\$ _____
Pulpwood			
Mixed Aspen	1,613.00 Cords	\$ 37.95/Cord	\$ _____
Mixed Hardwood	552.00 Cords	\$ 30.55/Cord	\$ _____
Red Pine	266.00 Cords	\$ 50.00/Cord	\$ _____
White Spruce	36.00 Cords	\$ 28.55/Cord	\$ _____

\*The volumes are statistically estimated within plus (+) or minus (-) 8.60 percent. These estimated volumes are final and not subject to adjustment. Prospective bidders are urged to examine this timber and to make their own estimates of quantity and quality.

I understand that any or all bids may be rejected. All bids must be signed and all bid items must be bid or the bid form may be rejected. I also understand that consideration and awarding a contract will be based upon my past performance and ability to complete the contract based upon equipment and staffing subject to my control.

FEDERAL ID: \_\_\_\_ - \_\_\_\_ or SOCIAL SECURITY NUMBER: \_\_\_\_ - \_\_\_\_ - \_\_\_\_

Company or individual bidding: \_\_\_\_\_

Company representative's name: \_\_\_\_\_

Address: \_\_\_\_\_

City: \_\_\_\_\_ State: \_\_\_\_\_ Zip: \_\_\_\_\_

IF AVAILABLE, PLEASE PLACE THE PERSONALIZED LABEL FROM YOUR PROSPECTUS IN THE ABOVE BOX.

Individual or company representative's signature: \_\_\_\_\_ Date: \_\_\_\_\_

Phone number : \_\_\_\_\_ Email (optional): \_\_\_\_\_

**THE WINNING BIDDER MUST COMPLETE THE VERIFICATION OF WORKER'S DISABILITY COMPENSATION ACT COMPLIANCE (ON REVERSE SIDE IF DOUBLE SIDED) WITHIN 21 DAYS OF SALE AWARD DATE**



<b>FOR DEPARTMENT USE ONLY</b>
Sale Number (XX - XXX - XX - XX)
Forest Management Unit:

## TIMBER SALE VERIFICATION OF WORKER'S DISABILITY COMPENSATION ACT COMPLIANCE

*As required by Act 317, P.A. 1969 (Worker's Compensation) and  
Part 5 of Act 451 of 1994, as amended.*

### VERIFICATION OF WORKER'S DISABILITY COMPENSATION ACT COMPLIANCE

- This verification must be completed and submitted within 21 days of contract award and prior to the issuance of the timber sale contract.
- In addition, if boxes 2B or 2C are checked, then Notice of Exclusion or Certificate of Insurance must be submitted within twenty-one (21) days of the contract award and prior to the issuance of the timber sale contract.
- All information must be typed or printed except for written signatures.

Please Check Appropriate Categories:

1. My business is organized as (you **must** check one of the boxes below):
  - A.  Sole Proprietorship (individual)
  - B.  Partnership
  - C.  Corporation
2. You **must** check one of the boxes below:
  - A.  I certify my business is a sole proprietorship and it has no employees but the sole proprietor. I am not subject to the Worker's Compensation Laws.
  - B.  I certify my business has satisfied its obligation to the Worker's Compensation Act through the use of an approved Notice of Exclusion (BWC-337, Rev. 5/96). I will provide a copy of the Notice of Exclusion within 21 days of the contract award. (For questions or a copy of the BWC-337, please call the Worker's Compensation Bureau at 517-322-1195).
  - C.  I certify my business has a Worker's Compensation Policy. I will provide an original Certificate of Insurance within twenty-one (21) days of the contract award.
3. If you have checked item 2(A) or 2(B), you **must** indicate the number of **both** full-time and part-time employees, other than yourself, including family members and active partners (if none, you must enter "0").

\_\_\_\_\_ Full-time Employees

\_\_\_\_\_ Part-time Employees

Name of Business		Federal ID (or) Social Security No.	
Address		Telephone (       )	
City	State	ZIP	

*I hereby certify that the above information is true and correct. I agree to notify the Michigan DNR of any changes that occur in factors affecting my coverage during any of my present and future operations.*

\_\_\_\_\_  
Signature of Owner or Authorized Representative

\_\_\_\_\_  
Title

\_\_\_\_\_  
Date

**Please complete the "SEALED BID" information on the next page**