



**DEPARTMENT OF NATURAL RESOURCES
STATE OF MICHIGAN**

TIMBER SALE PROSPECTUS #5909

SCHEDULED SALE DATE AND TIME: 3:00 p.m. (local time) on May 30, 2017.

LOCATION: ESCANABA OFFICE, 6833 HWY 2, 41 & M-35, GLADSTONE, MI 49837.

PROSPECTUS NOTE: The bidder is advised to inspect the sale area and review the location, estimated volumes, operating costs and contract terms of proposed sales. Please be aware that some landowners may request 60 days or more notice for access across their land.

Notice is hereby given that bids will be received by the Unit Manager, ESCANABA MANAGEMENT UNIT, for certain timber on the following described lands:

Menominee River SBW (33-023-17)

Menominee County, Advertised Price \$77,417.85, 103.7 Acres, N White Cedar, Spruce/Fir/Tamarack.

SALE NOTE: Within the sale, the spruce budworm has caused some balsam fir and spruce mortality along with a lot of defoliation. The eastern larch beetle is also present and has caused some tamarack mortality. The purchaser should harvest this sale as soon as possible.

Pemene Creek SBW (33-024-17)

Menominee County, Advertised Price \$90,611.30, 104.3 Acres, Aspen, White Pine.

SALE NOTE: Within the sale, the spruce budworm has caused some balsam fir and spruce mortality. The purchaser should harvest this sale as soon as possible. Three culverts need to be purchased and installed by the Purchaser.

South of the Fen SBW (33-025-17)

Menominee County, Advertised Price \$27,999.45, 29.9 Acres, Aspen, Hardwood.

SALE NOTE: The balsam fir and spruce have some defoliation from the spruce budworm, but no mortality at this time. The purchaser should harvest this sale as soon as possible.

Pine Trail (33-009-16)

Delta County, Advertised Price \$432,116.65, 400.3 Acres, Red Pine, Spruce/Fir/Tamarack.

SALE NOTE: A pre sale conference prior to cutting in any unit will be required with the sale administrator to lay out crossing locations along the Days River pathway. Note: the red pine pulpwood volumes include red pine sawlogs.

A recreation site such as a trail, pathway, or campground is within the sale area or the vicinity. Certain restrictions/specifications may be applicable including time restrictions.

BID INSTRUCTIONS (VER. 09/02/2016):

1. Scheduled Bid Location, Date, and Time (2/11)

Bids must be received by the Unit Manager, ESCANABA OFFICE, 6833 HWY 2, 41 & M-35, GLADSTONE, MI 49837, no later than 3:00 p.m. (local time) on May 30, 2017. For further information concerning this sale, contact Eric Thompson at 906-786-2354.

2. Bidder's Qualifications (5/16)

Purchaser shall obtain workers compensation insurance to cover claims under Michigan's Worker's Disability Compensation Act of 1969 or similar employee benefit act of any other state applicable to an employee. If all or part of a timber sale was prepared by a private contractor, the contractor and that contractor's company are not permitted to bid on the timber sale contract. Bids will not be accepted from individuals or companies appearing on the DNR/FRD No-Bid List. This list contains the names of purchasers who previously failed to execute a contract within 21-days or who have a history of poor performance.

3. Preparation of Sealed Bids (5/16)

Bid Forms may be completed online thru Michigan DNR Timber Sale Online Bidding (OLB) at www.michigan.gov/timberbidding or by completing the hardcopy Bid Form found in the Timber Sale Prospectus. Hardcopy Bid Forms shall be manually signed in ink. Registration in OLB is considered your 'signature' for all bids submitted thru that system. Bid prices must be entered for each species and product in the Bid Price column for all material subject to bidding and all fill-in blanks must be completed. If erasures or other changes appear on the hardcopy Bid Form, each erasure or change must be initialed by the person signing the bid.

4. Submission of Sealed Bids (5/16)

Bid forms may be obtained from the Unit Manager or thru OLB. Bids may be submitted hardcopy or thru OLB. All hardcopy bids must be submitted on the bid form and in an envelope clearly identified as described in this section. NOTE: Only one bid form per bid envelope. Sealed bids must be submitted to the Unit office designated in the prospectus and must be submitted at or prior to the time established in the prospectus. The envelope should show on the outside (a) the sale name or number and (b) the date and time of bid opening, as shown in the prospectus. Bids received after the time specified in the sale prospectus are late bids and will be rejected.

It is possible for a bidder to submit multiple bids on a single sale. For example, a bid may be submitted hardcopy and a bid may be submitted thru OLB. Or, two bidders from the same company could both submit bids on the same sale. If this were to happen, the State would accept all bids received and award the contract accordingly. All bidding and contractual requirements would apply to all bids received.

5. Public Opening of Sealed Bids (7/16)

If conditions permit, the sealed bids will be publicly opened and posted at the time and place set in the prospectus.

If a bidder, present at a bid opening, has submitted bids on more than one sale, that bidder may withdraw their unopened bid envelopes or announce the withdrawal of their online bid after being declared the successful bidder on one sale.

6. Award of Contract (1/11)

Award of the contract will be made to the Bidder whose bid, conforming to the prospectus, is most advantageous to the State of Michigan on the basis of total value at rates bid for the estimated quantities. The State reserves the right to reject any bid or waive any minor irregularity in bids received. A written award mailed (or otherwise furnished) to the successful Bidder shall be deemed to result in a binding contract without further action by either party.

7. Down Payment (1/11)

The Bidder to whom award is made must make a down payment within 21 days of the sale award. The amount of the down payment will be calculated as shown in the Bond and Payment Schedule of this prospectus. Only cash may be used to meet this requirement.

8. Performance Security (1/11)

As guarantee of faithful performance, a cash bond, certificate of deposit, surety bond or irrevocable letter of credit (LOC) is required within 21 days of the sale award. The amount of the performance security is shown in the Bond and

Payment Schedule of this prospectus. If an LOC or surety is used, the coverage must extend for at least 6 months beyond the contract expiration.

9. Timber Sale Contract (9/14)

Additional conditions and requirements common to all timber sales are listed on the timber sale contract (R4031) and are available on line at www.michigan.gov/timber. Contact the Unit Manager for additional information or a sample contract. Within 21 days of the date of the award letter, the bidder must sign the contract and provide the required down payment, performance security, and verification of worker's disability compensation. The down payment and performance security shall be in accordance with the provisions of the timber sale contract, in the sums stated in this prospectus. If these actions are not taken, then the Bidder, the Bidder's corporation, and the corporation's principals may not be permitted to bid on State timber sales for a period of 1 year. In addition, the Bidder certifies that if awarded this contract, the Bidder will complete the timber sale contract in accordance with its terms and any modifications thereof including requirements to purchase, cut, and remove the included timber by the expiration date.

10. Disclaimer of Estimates and Bidder's Warranty of Inspection (7/16)

Before submitting this bid, the Bidder is advised and cautioned to inspect the sale area, review the requirements of the sale contract, and take other steps as may be reasonably necessary to ascertain the location, estimated volumes, construction estimates, and operating costs of the proposed sale. Failure to do so will not relieve the Bidder from responsibility for completing the contract.

The Bidder warrants that this bid is submitted solely on the basis of the Bidder's examination and inspection of the quality and quantity of the timber offered for sale and the Bidder's opinion of the value thereof and the costs of recovery. No reliance should be placed on the State of Michigan's estimates of timber quality, quantity or costs of recovery. Bidder further acknowledges that the State of Michigan: (i) expressly disclaims any warranty of fitness of timber for any purpose; (ii) offers this timber as is without any warranty of quality (merchantability) or quantity and (iii) expressly disclaims any warranty as to the quantity or quality of timber sold.

11. Certification and Chain-of-Custody (10/14)

Unless otherwise indicated in the contract under section 7 – Other Conditions of the Sale Specific Conditions & Requirements, the area encompassed by this timber sale is certified to the standards of the Forest Stewardship Council (FSC) - Certificate #SCS-FM/COC-00090N and the Sustainable Forestry Initiative (SFI) - Certificate #NSF-SFIS-5Y031-SF5. Forest products from this sale may be delivered to the mill as "FSC 100% and / or SFI certified" as long as the contractor hauling the forest products is chain-of-custody (COC) certified or covered under a COC certificate from the destination mill. The purchaser is responsible for maintaining COC after leaving the sale area.

12. Good Neighbor Authority (GNA) Requirements (7/16)

If the name of this timber sales contains the acronym GNA, it is authorized by the Good Neighbor Authority (GNA) and covered by various agreements between the U.S. Forest Service and the State. The timber sale occurs on federal land and the following conditions apply:

GNA contracts on US Forest Service land will not be awarded to purchasers on the Federal list of excluded parties. The System for Award Management (SAM) will be checked for active excluded parties prior to award of contract. In addition, the Bidder to whom award is made must complete an Assurance Regarding Felony Conviction or Tax Delinquent Status for Corporate Applicants (AD-3031).

13. Good Neighbor Authority (GNA) Requirements, con't (9/16)

Bidder certifies, by signing this bid form, that to the best of Bidder's knowledge that the following representations are accurate and complete.

- a. That the Bidder and its principals are not presently debarred, suspended, proposed for debarment, declared ineligible, or voluntary excluded from timber sales (covered transactions) by any Federal department or agency.
- b. That the Bidder and its principals have not within a 3-year period preceding this bid been convicted of or had a civil judgment rendered against them for commission of fraud or a criminal offense in connection with obtaining, attempting to obtain, or performing a public (Federal, State, or local) transaction or contract under a public transaction; violation of Federal or State antitrust statutes or commission of embezzlement, theft, forgery, bribery, falsification or destruction of records, making false statements, or receiving stolen property.

c. That the Bidder and its principals are not presently indicted for or otherwise criminally or civilly charged by a governmental entity (Federal, State, or local) with commission of any of the offenses enumerated in paragraph b of this certification.

d. That the Bidder and its principals have not within a 3-year period preceding this bid had one or more public transactions (Federal, State, or local) terminated for breach or default of a timber or forest product contract.

Bidders that cannot certify this requirement, in whole or in part, shall submit an explanation with their bid.

KEITH CREAGH

Director

TIMBER SALE INFORMATION

Menominee River SBW (33-023-17)

Menominee County (Advertised Price \$77,417.85)

SALE NOTE: Within the sale, the spruce budworm has caused some balsam fir and spruce mortality along with a lot of defoliation. The eastern larch beetle is also present and has caused some tamarack mortality. The purchaser should harvest this sale as soon as possible.

A timber sale contract for this lump sum, sealed bid timber sale will be awarded to the responsible bidder offering the highest sealed bid price. Bids must be at or above the following advertised price for each species:

<u>PRODUCTS & SPECIES</u>	<u>ESTIMATED UNITS*</u>		<u>ADVERTISED PRICE</u>
Sawtimber			
Red Oak	32.10	MBF	\$ 245.00 / MBF
White Pine	4.10	MBF	\$ 72.00 / MBF
Pulpwood			
Balsam Fir	81.00	Cords	\$ 25.30 / Cord
Mixed Aspen	356.00	Cords	\$ 31.35 / Cord
Mixed Hardwood	380.00	Cords	\$ 34.60 / Cord
Mixed Spruce	554.00	Cords	\$ 25.60 / Cord
N. White Cedar	771.00	Cords	\$ 31.40 / Cord
Red Oak	104.00	Cords	\$ 19.00 / Cord
Tamarack	72.00	Cords	\$ 17.60 / Cord
White Pine	35.00	Cords	\$ 36.15 / Cord

* The total volume is statistically estimated within plus (+) or minus (-) 10.63 percent. The estimated units are final and not subject to adjustment. Prospective bidders are urged to examine this timber and to make their own estimates of quantity and quality.

BOND AND PAYMENT SCHEDULE:

1. A bond in the amount of \$3,871.00 to insure faithful performance of the conditions of the contract will be deposited by the successful bidder within 21 days of the sale award.
2. Cutting in any sale or unit without the required advance payment would be considered a trespass.
3. Total payment must be paid in advance or according to the following schedule:
 - (a) Ten percent (10%) of the sale value must be paid within 21 days of the sale award.
 - (b) The 10% down payment will be credited towards the first unit cut.
4. If no cutting takes place, the 10% down payment will not be refunded.
5. Operations on the contract issued will terminate on 06/30/2019.

Description of Timber by Payment Unit (PU)

PU	MARKET GROUP	PRODUCT	QUANTITY	UNIT	ACRES	ADVERTISE PRICE
1	Balsam Fir	Pulpwood	5.0	Cords	13.3	\$8,361.50
	Mixed Aspen		84.0	Cords		
	<i>Quaking Aspen</i>		84.0	<i>Cords</i>		
	Mixed Hardwood		8.0	Cords		
	<i>Black Cherry</i>		8.0	<i>Cords</i>		
	Mixed Spruce		208.0	Cords		
	<i>White Spruce</i>		208.0	<i>Cords</i>		
2	Balsam Fir	Pulpwood	11.0	Cords	20.1	\$12,955.60
	Mixed Aspen		21.0	Cords		
	<i>Balsam Poplar</i>		9.0	<i>Cords</i>		
	<i>Quaking Aspen</i>		12.0	<i>Cords</i>		
	Mixed Hardwood		118.0	Cords		
	<i>Black Ash</i>		39.0	<i>Cords</i>		
	<i>Black Cherry</i>		7.0	<i>Cords</i>		
	<i>Paper Birch</i>		31.0	<i>Cords</i>		
	<i>Red Maple</i>		39.0	<i>Cords</i>		
	<i>White Oak</i>		2.0	<i>Cords</i>		
	Mixed Spruce		29.0	Cords		
	<i>Black Spruce</i>		21.0	<i>Cords</i>		
	<i>White Spruce</i>		8.0	<i>Cords</i>		
	N. White Cedar		200.0	Cords		
	Tamarack		17.0	Cords		
White Pine	17.0	Cords				
3	White Pine	Sawtimber	3.0	MBF	18.1	\$10,516.40
	Balsam Fir	Pulpwood	5.0	Cords		
	Mixed Aspen		24.0	Cords		
	<i>Balsam Poplar</i>		23.0	<i>Cords</i>		
	<i>Quaking Aspen</i>		1.0	<i>Cords</i>		
	Mixed Hardwood		37.0	Cords		
	<i>Black Ash</i>		7.0	<i>Cords</i>		
	<i>Paper Birch</i>		14.0	<i>Cords</i>		
	<i>Red Maple</i>		16.0	<i>Cords</i>		
	Mixed Spruce		54.0	Cords		
	<i>Black Spruce</i>		47.0	<i>Cords</i>		
	<i>White Spruce</i>		7.0	<i>Cords</i>		
	N. White Cedar		182.0	Cords		
	Tamarack		47.0	Cords		
	White Pine		6.0	Cords		
4	White Pine	Sawtimber	1.1	MBF	18.9	\$18,778.80
	Mixed Aspen	Pulpwood	19.0	Cords		
	<i>Balsam Poplar</i>		12.0	<i>Cords</i>		
	<i>Quaking Aspen</i>		7.0	<i>Cords</i>		
	Mixed Hardwood		2.0	Cords		
	<i>Black Ash</i>		2.0	<i>Cords</i>		
	Mixed Spruce		243.0	Cords		
	<i>Black Spruce</i>		242.0	<i>Cords</i>		
	<i>White Spruce</i>		1.0	<i>Cords</i>		
	N. White Cedar		366.0	Cords		
	Tamarack		8.0	Cords		
White Pine	5.0	Cords				
5	Red Oak	Sawtimber	32.1	MBF	33.3	\$26,805.55
	Balsam Fir	Pulpwood	60.0	Cords		
	Mixed Aspen		208.0	Cords		
	<i>B. T. Aspen</i>		140.0	<i>Cords</i>		
	<i>Balsam Poplar</i>		8.0	<i>Cords</i>		
	<i>Quaking Aspen</i>		60.0	<i>Cords</i>		

Description of Timber by Payment Unit (PU), con't

PU	MARKET GROUP	PRODUCT	QUANTITY	UNIT	ACRES	ADVERTISE PRICE
5 con't	Mixed Hardwood	Pulpwood	215.0	Cords		
		<i>Black Ash</i>	4.0	<i>Cords</i>		
		<i>Black Cherry</i>	11.0	<i>Cords</i>		
		<i>Paper Birch</i>	21.0	<i>Cords</i>		
		<i>Red Maple</i>	174.0	<i>Cords</i>		
		<i>Sugar Maple</i>	5.0	<i>Cords</i>		
		Mixed Spruce	20.0	Cords		
		<i>White Spruce</i>	20.0	<i>Cords</i>		
		N. White Cedar	23.0	Cords		
		Red Oak	104.0	Cords		
		White Pine	7.0	Cords		
TOTAL:			36.2	MBF		
TOTAL:			2,353.0	Cords		

Sale Specific Conditions & Requirements

Sale Name: Menominee River SBW

Sale Number: 33-023-17 Seq#: 1

1 - Sale Area

1.2 - Boundaries

1.2.1 - Painted boundaries (1/14)

The sale boundary and Payment Unit boundaries are marked and identified by red and yellow paint. Exterior sale boundary lines against state are marked with red paint. Interior Payment Unit boundaries are marked with yellow paint. The painted boundary line trees are not Included Timber and are to be protected; except the double dot red painted trees along the State Road in Payment Unit 5 are Included Timber and are to be cut. Yellow painted trees designating an interior Payment Unit boundary are only to be cut when all surrounding Payment Units have been paid for.

2 - Timber Specifications

2.1 - Included Timber

2.1.1 - Clearcut unit(s) with unmerchantable trees (6/14)

Within Payment Unit(s) 1 - 5, cut all trees that are three (3) inches or more at DBH; except within Payment Unit 5 there are two retention patches that are bounded by a red paint line and need to be protected. No harvesting activities may occur within these areas.

3 - Payments

3.3 - Pre-measured Sales

3.3.4 - Dividing payment units (7/14)

Payment Unit(s) \$18,000 in value or greater may be divided at the request of the Purchaser and upon approval of the Unit Manager. Dividing Payment Units is a contract modification which requires a Timber Sale Contract Supplement. There will be only one division per Payment Unit.

4 - Transportation

4.2 - Maintenance

4.2.1 - Hauling restriction (12/08)

Hauling may be restricted on forest roads by the Unit Manager or his/her representative. The restriction may occur during spring breakup or during other wet weather conditions.

4.2.4 - Grading (10/16)

For completion of the sale, state forest roads must be graded. In general, this will require a road grader or bull dozer to shape up the roads after forest products have been hauled off site. This includes cleaning of drainage areas, grading, crowning and filling with gravel, if necessary. The grading equipment to be used must be approved by the Unit Manager or his/her representative.

5 - Operations

5.2 - Conduct of Operations

5.2.3 - Operating Restrictions

5.2.3.1 - Operating restrictions (9/11)

Within Payment Unit(s) 2 - 4, cutting and skidding are limited to the period of December 1st to March 31st, unless there is an extended dry or frozen period and the sale administrator approves of harvesting during that time period. This restriction is because of low wet ground within all of the units.

5.2.3.11 - Coppice regeneration protection (4/10)

To promote aspen regeneration, harvesting is limited to October 1st through April 30th within Payment Unit 1.

5.4 - Soil Protection

5.4.1 - Rutting restriction, general (7/16)

Operations are to cease immediately if equipment and weather conditions result in rutting of roads and/or skid trails which is 12 inches or greater in depth and 50 feet in length. The Unit Manager or his/her representative may restrict hauling and/or skidding if ruts exceed the specified depth. With the Unit Manager or his/her representative's approval, the Purchaser may return to the area when the risk of rutting has decreased.

7 - Other Conditions

7.5 - Loss

7.5.1 - Deteriorating timber (7/09)

The sale area has received damage from the spruce budworm and the eastern larch beetle. The Purchaser should harvest the wood as soon as possible. The Department of Natural Resources is held free of responsibility of any further damage or deterioration due to delay in harvesting.



TIMBER SALE MAP

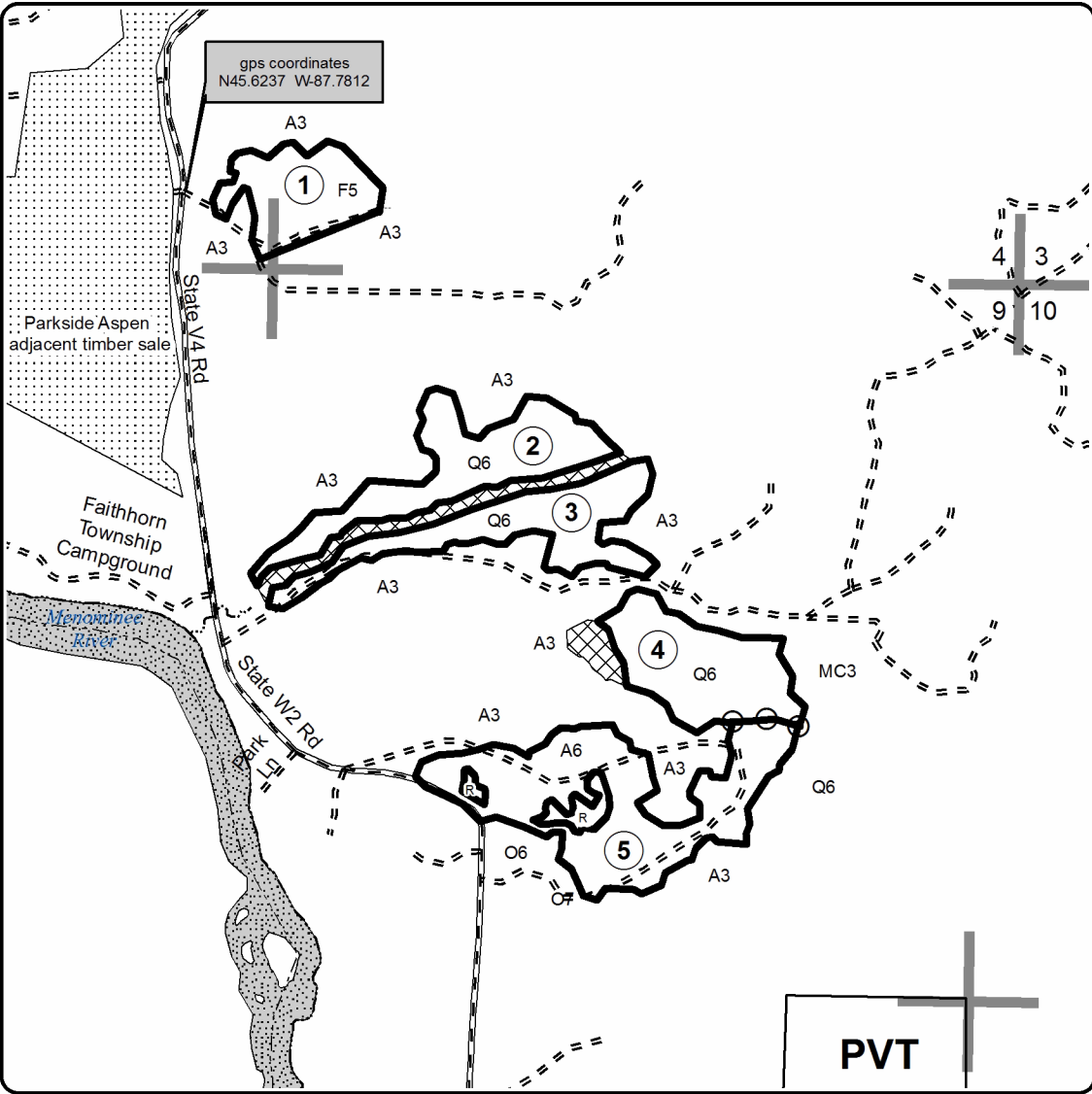
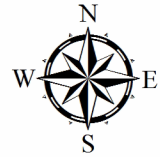
This information provided by authority of Part 525, 1994 PA 451, as amended.

Forest Management Unit Escanaba Management Unit		County Menominee County	Mapped By Beaudo	Date 11/17/2016	Page 1	of 1
Township 37N	Range 28W	Section(s) and Subdivision(s) Sec 4 - SWSW; Sec 5 - SESE; Sec 9 - NENW, NESW, NWNW, NWSE, NWSW, SENW, SESW, SWNE, SWNW & SWSE.		Scale 1:15,840		

Cover Type				Density	
A = Aspen	H = Hemlock	N = Marsh	U = Upland Brush	0 = Non Stocked	5 = Pole Timber Medium
B = Paper Birch	J = Jack Pine	O = Oak	UM = Upland Mixed	1 = Seedling Sapling Poor	6 = Pole Timber Well
C = Cedar	L = Lowland Brush	P = Lowland Poplar	V = Bog or Marsh	2 = Seedling Sapling Medium	7 = Saw Timber Poor
D = Treed Bog	LM = Lowland Mixed	Q = Mixed Swamp Conifer	W = White Pine	3 = Seedling Sapling Well	8 = Saw Timber Medium
E = Swamp Hdwoods	M = Mpl, Bch, Brch	R = Red Pine	X = Non Stocked	4 = Pole Timber Poor	9 = Saw Timber Well
F = Spruce Fir	MC = Mixed Conifer	S = Black Spruce	Z = Water		
G = Grass	MD = Mixed Deciduous	T = Tamarack			

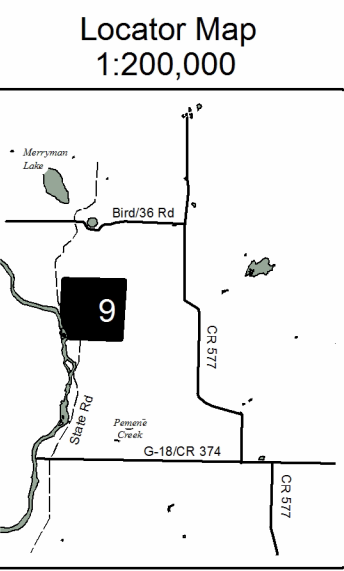
PU	Acres	PU	Acres
1	13.3	4	18.9
2	20.1	5	33.3
3	18.1		

Menominee River SBW
Compartment 113
103.7 Acres



Legend

- Against State (Red)
- Payment Unit (Yellow)
- Section Corners
- Section Number
- Gravel Roads
- Poor Dirt Roads
- State Land Boundary
- Payment Unit
- Retention Patch
- Stand Retention
- PVT Private Property



TIMBER SALE INFORMATION

Pemene Creek SBW (33-024-17)

Menominee County (Advertised Price \$90,611.30)

SALE NOTE: Within the sale, the spruce budworm has caused some balsam fir and spruce mortality. The purchaser should harvest this sale as soon as possible. Three culverts need to be purchased and installed by the Purchaser.

A timber sale contract for this lump sum, sealed bid timber sale will be awarded to the responsible bidder offering the highest sealed bid price. Bids must be at or above the following advertised price for each species:

<u>PRODUCTS & SPECIES</u>	<u>ESTIMATED UNITS*</u>	<u>ADVERTISED PRICE</u>
Sawtimber		
White Pine	69.20 MBF	\$ 72.00 / MBF
Pulpwood		
Balsam Fir	120.00 Cords	\$ 25.30 / Cord
Mixed Aspen	1,318.00 Cords	\$ 31.35 / Cord
Mixed Hardwood	152.00 Cords	\$ 34.60 / Cord
N. White Cedar	49.00 Cords	\$ 31.40 / Cord
Red Oak	33.00 Cords	\$ 19.00 / Cord
Red Pine	192.00 Cords	\$ 61.10 / Cord
Tamarack	2.00 Cords	\$ 17.60 / Cord
White Pine	528.00 Cords	\$ 36.15 / Cord
White Spruce	117.00 Cords	\$ 25.60 / Cord

* The total volume is statistically estimated within plus (+) or minus (-) 7.34 percent. The estimated units are final and not subject to adjustment. Prospective bidders are urged to examine this timber and to make their own estimates of quantity and quality.

BOND AND PAYMENT SCHEDULE:

1. A bond in the amount of \$4,531.00 to insure faithful performance of the conditions of the contract will be deposited by the successful bidder within 21 days of the sale award.
2. Cutting in any sale or unit without the required advance payment would be considered a trespass.
3. Total payment must be paid in advance or according to the following schedule:
 - (a) Ten percent (10%) of the sale value must be paid within 21 days of the sale award.
 - (b) The 10% down payment will be credited towards the first unit cut.
4. If no cutting takes place, the 10% down payment will not be refunded.
5. Operations on the contract issued will terminate on 12/31/2018.

Description of Timber by Payment Unit (PU)

PU	MARKET GROUP	PRODUCT	QUANTITY	UNIT	ACRES	ADVERTISE PRICE
1	White Pine	Sawtimber	41.9	MBF	29.0	\$31,706.75
	Balsam Fir	Pulpwood	25.0	Cords		
	Mixed Aspen		237.0	Cords		
	<i>Quaking Aspen</i>		237.0	<i>Cords</i>		
	Mixed Hardwood		61.0	Cords		
	<i>Paper Birch</i>		11.0	<i>Cords</i>		
	<i>Red Maple</i>		50.0	<i>Cords</i>		
	Red Oak		12.0	Cords		
	Red Pine		103.0	Cords		
	White Pine		312.0	Cords		
	White Spruce		28.0	Cords		
	2	White Pine	Sawtimber	7.2		
Balsam Fir		Pulpwood	21.0	Cords		
Mixed Aspen			145.0	Cords		
<i>B. T. Aspen</i>			15.0	<i>Cords</i>		
<i>Quaking Aspen</i>			130.0	<i>Cords</i>		
Mixed Hardwood			17.0	Cords		
<i>Paper Birch</i>			2.0	<i>Cords</i>		
<i>Red Maple</i>			15.0	<i>Cords</i>		
N. White Cedar			5.0	Cords		
Red Pine			23.0	Cords		
White Pine			138.0	Cords		
White Spruce			25.0	Cords		
3	White Pine	Sawtimber	2.9	MBF	22.4	\$15,485.95
	Balsam Fir	Pulpwood	54.0	Cords		
	Mixed Aspen		314.0	Cords		
	<i>B. T. Aspen</i>		112.0	<i>Cords</i>		
	<i>Balsam Poplar</i>		54.0	<i>Cords</i>		
	<i>Quaking Aspen</i>		148.0	<i>Cords</i>		
	Mixed Hardwood		26.0	Cords		
	<i>Basswood</i>		3.0	<i>Cords</i>		
	<i>Paper Birch</i>		6.0	<i>Cords</i>		
	<i>Red Maple</i>		17.0	<i>Cords</i>		
	Red Pine		30.0	Cords		
	White Pine		27.0	Cords		
White Spruce		14.0	Cords			
4	White Pine	Sawtimber	11.6	MBF	19.6	\$16,427.45
	Balsam Fir	Pulpwood	9.0	Cords		
	Mixed Aspen		364.0	Cords		
	<i>B. T. Aspen</i>		289.0	<i>Cords</i>		
	<i>Quaking Aspen</i>		75.0	<i>Cords</i>		
	Mixed Hardwood		13.0	Cords		
	<i>Red Maple</i>		13.0	<i>Cords</i>		
	Red Oak		20.0	Cords		
	Red Pine		26.0	Cords		
	White Pine		29.0	Cords		
	White Spruce		19.0	Cords		
	5	White Pine	Sawtimber	5.6		
Balsam Fir		Pulpwood	11.0	Cords		
Mixed Aspen			258.0	Cords		
<i>Balsam Poplar</i>			16.0	<i>Cords</i>		
<i>Quaking Aspen</i>			242.0	<i>Cords</i>		
Mixed Hardwood			35.0	Cords		
<i>Black Ash</i>			20.0	<i>Cords</i>		
<i>Paper Birch</i>			3.0	<i>Cords</i>		
<i>Red Maple</i>			12.0	<i>Cords</i>		

Description of Timber by Payment Unit (PU), con't

PU	MARKET GROUP	PRODUCT	QUANTITY	UNIT	ACRES	ADVERTISE PRICE
5 con't	N. White Cedar	Pulpwood	44.0	Cords		
	Red Oak		1.0	Cords		
	Red Pine		10.0	Cords		
	Tamarack		2.0	Cords		
	White Pine		22.0	Cords		
	White Spruce		31.0	Cords		
TOTAL:			69.2	MBF		
TOTAL:			2,511.0	Cords		

Sale Specific Conditions & Requirements

Sale Name: Pemene Creek SBW

Sale Number: 33-024-17 Seq#: 1

1 - Sale Area

1.2 - Boundaries

1.2.1 - Painted boundaries (1/14)

The sale boundary and Payment Unit boundaries are marked and identified by blue, red and yellow paint. Exterior sale boundary lines against private property are marked with blue paint. Exterior sale boundary lines against state are marked with red paint. There are some double dot red painted trees along G-18 and the North State Road, these trees are included timber and should be harvested. Interior Payment Unit boundaries are marked with yellow paint. The painted boundary line trees are not Included Timber and are to be protected. Yellow painted trees designating an interior Payment Unit boundary are only to be cut when all surrounding Payment Units have been paid for.

2 - Timber Specifications

2.1 - Included Timber

2.1.1 - Clearcut unit(s) with unmerchantable trees (6/14)

Within Payment Unit(s) 1 - 5, cut all trees that are three (3) inches or more at DBH; except white pine greater than 22" inches at DBH.

3 - Payments

3.3 - Pre-measured Sales

3.3.4 - Dividing payment units (7/14)

Payment Unit(s) \$18,000 in value or greater may be divided at the request of the Purchaser and upon approval of the Unit Manager. Dividing Payment Units is a contract modification which requires a Timber Sale Contract Supplement. There will be only one division per Payment Unit.

4 - Transportation

4.1 - Construction

4.1.2 - Stream crossings, specific (3/11)

There is a small creek/drain that flows between the two portions of Payment Unit 5. A small bridge, mats, or other approved crossing will need to be set before skidding the wood from the northern part of Payment Unit 5, if the ground isn't frozen.

4.1.8 - Road work (1) (8/07)

The following road work is required: three new 15" X 24' corrugated steel culverts will need to be purchased and installed by the purchaser. Two of the culverts will be installed on the access road within Payment Unit 2 and the third one will be installed on the access road into Payment Unit 5. The approximate culvert locations are shown on the timber sale map. All of the culverts must have a minimum of 12" inches of gravel placed over them. All of the required road work must be completed before any harvesting activities may occur on the affected units. Gravel is available from a state pit, just to the east of Payment Unit 5.

4.2 - Maintenance

4.2.1 - Hauling restriction (12/08)

Hauling may be restricted on forest roads by the Unit Manager or his/her representative. The restriction may occur during spring breakup or during other wet weather conditions.

4.2.4 - Grading (10/16)

For completion of the sale, state forest roads must be graded. In general, this will require a road grader or bull dozer to shape up the roads after forest products have been hauled off site. This includes cleaning of drainage areas, grading, crowning and filling with gravel, if necessary. The grading equipment to be used must be approved by the Unit Manager or his/her representative.

5 - Operations

5.2 - Conduct of Operations

5.2.22 - Operating Caution

5.2.22.1 - Operating caution (6/11)

It is recommended, but not required, that within Payment Unit(s) 5, cutting, skidding, and hauling occur during dry summer or frozen winter conditions. The reason for the recommendation is because the access road into Payment Unit 5 is lower ground. The contractor may haul in more gravel to build up the access road if they want to cut the stand during wetter periods.

5.4 - Soil Protection

5.4.1 - Rutting restriction, general (7/16)

Operations are to cease immediately if equipment and weather conditions result in rutting of roads and/or skid trails which is 12 inches or greater in depth and 50 feet in length. The Unit Manager or his/her representative may restrict hauling and/or skidding if ruts exceed the specified depth. With the Unit Manager or his/her representative's approval, the Purchaser may return to the area when the risk of rutting has decreased.

6 - Safety and Fire Prevention

6.2 - Signing

6.2.1 - Road posting (9/09)

The Purchaser is responsible for posting and maintaining caution signs on G-18 and the State W2 Road prior to beginning operations. The road must be posted at appropriate distances from the sale area to warn of logging activity and truck traffic. Signs must be removed when harvest operations are suspended or completed. The Purchaser will provide these signs.

7 - Other Conditions

7.5 - Loss

7.5.1 - Deteriorating timber (7/09)

The sale area has received damage from the spruce budworm. The Purchaser should harvest the wood as soon as possible. The Department of Natural Resources is held free of responsibility of any further damage or deterioration due to delay in harvesting. A high percentage of the balsam fir has died out already, and the spruce is dying out.



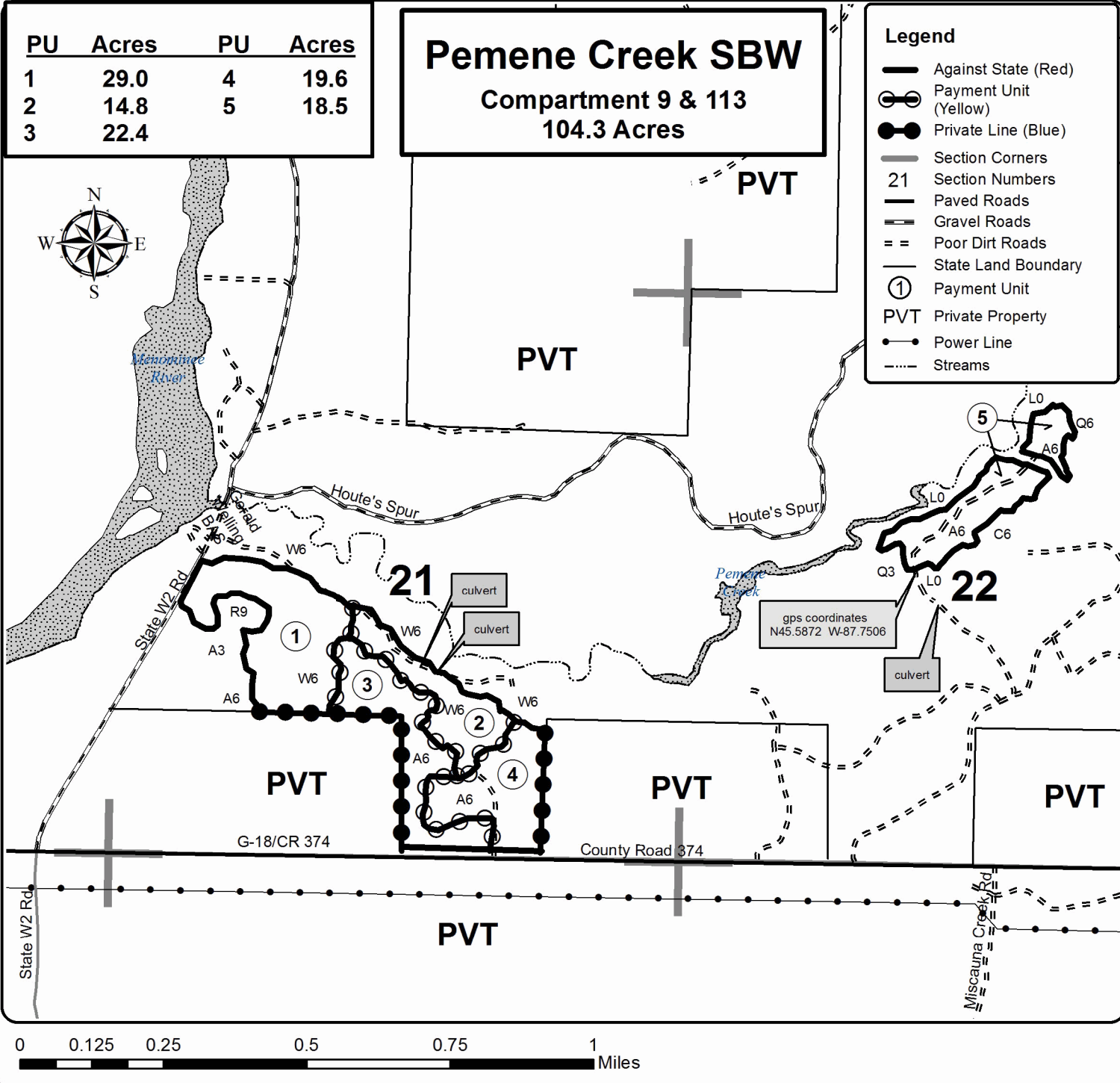
TIMBER SALE MAP

This information provided by authority of Part 525, 1994 PA 451, as amended.

Sale Number	Year
33-024	17

Forest Management Unit Escanaba Management Unit	County Menominee County	Mapped By Beaudo	Date 11/30/2016	Page 1	of 1
Township 37N	Range 28W	Section(s) and Subdivision(s) Sec 21 - NESW, NWSE, NWSW, SENW, SWNW, SWSE; Sec 22 - NWNE, SENW & SWNE.	Scale 1:15,840		

Cover Type				Density	
A = Aspen	H = Hemlock	N = Marsh	U = Upland Brush	0 = Non Stocked	5 = Pole Timber Medium
B = Paper Birch	J = Jack Pine	O = Oak	UM = Upland Mixed	1 = Seedling Sapling Poor	6 = Pole Timber Well
C = Cedar	L = Lowland Brush	P = Lowland Poplar	V = Bog or Marsh	2 = Seedling Sapling Medium	7 = Saw Timber Poor
D = Treed Bog	LM = Lowland Mixed	Q = Mixed Swamp Conifer	W = White Pine	3 = Seedling Sapling Well	8 = Saw Timber Medium
E = Swamp Hdwoods	M = Mpl, Bch, Brch	R = Red Pine	X = Non Stocked	4 = Pole Timber Poor	9 = Saw Timber Well
F = Spruce Fir	MC = Mixed Conifer	S = Black Spruce	Z = Water		
G = Grass	MD = Mixed Deciduous	T = Tamarack			



TIMBER SALE INFORMATION

South of the Fen SBW (33-025-17)

Menominee County (Advertised Price \$27,999.45)

SALE NOTE: The balsam fir and spruce have some defoliation from the spruce budworm, but no mortality at this time. The purchaser should harvest this sale as soon as possible.

A timber sale contract for this lump sum, sealed bid timber sale will be awarded to the responsible bidder offering the highest sealed bid price. Bids must be at or above the following advertised price for each species:

<u>PRODUCTS & SPECIES</u>	<u>ESTIMATED UNITS*</u>	<u>ADVERTISED PRICE</u>
Sawtimber		
Basswood	5.00 MBF	\$ 166.00 / MBF
Red Oak	1.10 MBF	\$ 245.00 / MBF
Pulpwood		
Balsam Fir	126.00 Cords	\$ 25.30 / Cord
Mixed Aspen	465.00 Cords	\$ 31.35 / Cord
Mixed Hardwood	199.00 Cords	\$ 34.60 / Cord
N. White Cedar	33.00 Cords	\$ 31.40 / Cord
Tamarack	2.00 Cords	\$ 17.60 / Cord
White Spruce	46.00 Cords	\$ 25.60 / Cord

* The total volume is statistically estimated within plus (+) or minus (-) 13.21 percent. The estimated units are final and not subject to adjustment. Prospective bidders are urged to examine this timber and to make their own estimates of quantity and quality.

BOND AND PAYMENT SCHEDULE:

1. A bond in the amount of \$1,400.00 to insure faithful performance of the conditions of the contract will be deposited by the successful bidder within 21 days of the sale award.
2. Cutting in any sale or unit without the required advance payment would be considered a trespass.
3. Total payment must be paid in advance or according to the following schedule:
 - (a) Ten percent (10%) of the sale value must be paid within 21 days of the sale award.
 - (b) The remainder is due before cutting begins.
4. If no cutting takes place, the 10% down payment will not be refunded.
5. Operations on the contract issued will terminate on 06/30/2019.

Description of Timber by Payment Unit (PU)

PU	MARKET GROUP	PRODUCT	QUANTITY	UNIT	ACRES	ADVERTISE PRICE
1	Basswood	Sawtimber	5.0	MBF	29.9	\$27,999.45
	Red Oak		1.1	MBF		
	Balsam Fir	Pulpwood	126.0	Cords		
	Mixed Aspen		465.0	Cords		
	<i>B. T. Aspen</i>		168.0	<i>Cords</i>		
	<i>Balsam Poplar</i>		9.0	<i>Cords</i>		
	<i>Quaking Asple</i>		288.0	<i>Cords</i>		
	Mixed Hardwood		199.0	Cords		
	<i>Basswood</i>		39.0	<i>Cords</i>		
	<i>Beech</i>		1.0	<i>Cords</i>		
	<i>Ironwood</i>		3.0	<i>Cords</i>		
	<i>Paper Birch</i>		2.0	<i>Cords</i>		
	<i>Red Maple</i>		55.0	<i>Cords</i>		
	<i>Red Oak</i>		9.0	<i>Cords</i>		
	<i>Sugar Maple</i>		80.0	<i>Cords</i>		
	<i>White Ash</i>		9.0	<i>Cords</i>		
	<i>Yellow Birch</i>		1.0	<i>Cords</i>		
	N. White Cedar		33.0	Cords		
	Tamarack		2.0	Cords		
	White Spruce		46.0	Cords		
TOTAL:			6.1	MBF		
TOTAL:			871.0	Cords		

Sale Specific Conditions & Requirements

Sale Name: South of the Fen SBW

Sale Number: 33-025-17 Seq#: 1

1 - Sale Area

1.2 - Boundaries

1.2.1 - Painted boundaries (1/14)

The sale boundary is marked and identified by blue and red paint. Exterior sale boundary lines against private property are marked with blue paint. Exterior sale boundary lines against state are marked with red paint.

2 - Timber Specifications

2.1 - Included Timber

2.1.1 - Clearcut unit(s) with unmerchantable trees (6/14)

Within Payment Unit(s) 1, cut all trees that are three (3) inches or more at DBH.

3 - Payments

3.3 - Pre-measured Sales

3.3.4 - Dividing payment units (7/14)

Payment Unit(s) \$18,000 in value or greater may be divided at the request of the Purchaser and upon approval of the Unit Manager. Dividing Payment Units is a contract modification which requires a Timber Sale Contract Supplement. There will be only one division per Payment Unit.

4 - Transportation

4.2 - Maintenance

4.2.1 - Hauling restriction (12/08)

Hauling may be restricted on forest roads by the Unit Manager or his/her representative. The restriction may occur during spring breakup or during other wet weather conditions.

4.2.4 - Grading (10/16)

For completion of the sale, state forest roads must be graded. In general, this will require a road grader or bull dozer to shape up the roads after forest products have been hauled off site. This includes cleaning of drainage areas, grading, crowning and filling with gravel, if necessary. The grading equipment to be used must be approved by the Unit Manager or his/her representative.

5 - Operations

5.2 - Conduct of Operations

5.2.3 - Operating Restrictions

5.2.3.1 - Operating restrictions (9/11)

Within Payment Unit(s) 1 cutting, skidding, and hauling are limited to the period of July 15th to March 31st; if access will be on the road through state land coming in from the north. If access is obtained from an adjacent private landowner to the west or south, this sale can be harvested and hauled at any time.

This restriction is because the access road through state land runs through the Carney Fen and disturbance needs to be minimized during the active orchid flowering period.

5.4 - Soil Protection

5.4.1 - Rutting restriction, general (7/16)

Operations are to cease immediately if equipment and weather conditions result in rutting of roads and/or skid trails which is 12 inches or greater in depth and 50 feet in length. The Unit Manager or his/her representative may restrict hauling and/or skidding if ruts exceed the specified depth. With the Unit Manager or his/her representative's approval, the Purchaser may

return to the area when the risk of rutting has decreased.

7 - Other Conditions

7.5 - Loss

7.5.1 - Deteriorating timber (7/09)

The sale area has received damage from the spruce budworm. The Purchaser should harvest the wood as soon as possible. The Department of Natural Resources is held free of responsibility of any further damage or deterioration due to delay in harvesting.



TIMBER SALE MAP

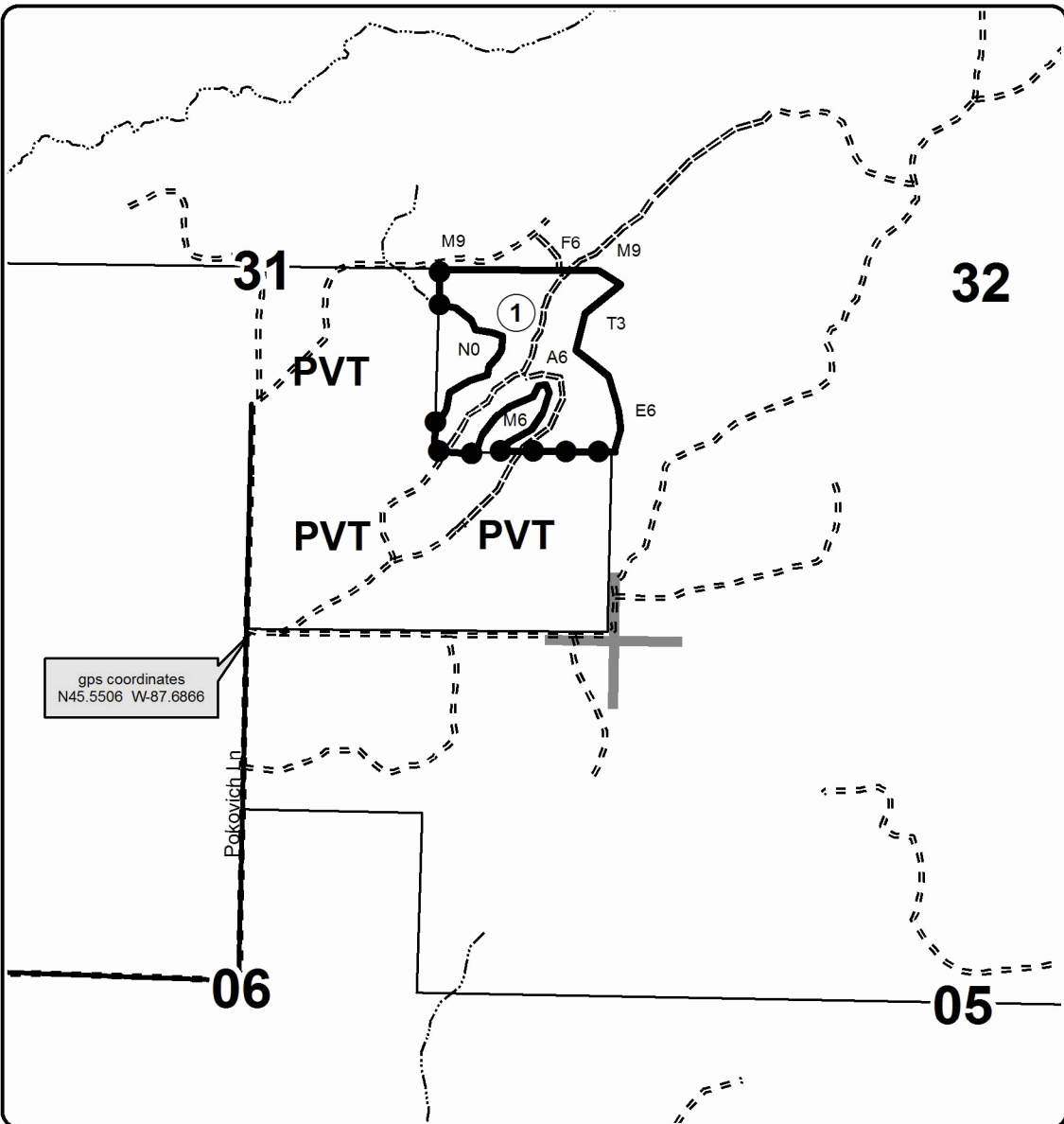
This information provided by authority of Part 525, 1994 PA 451, as amended.

Forest Management Unit Escanaba Management Unit		County Menominee County	Mapped By Beudo	Date 2/8/2017	Page 1	of 1
Township 37N	Range 27W	Section(s) and Subdivision(s) Sec 31 : NESE & SENE; Sec 32 : NWSW		Scale 1:15,840		

Cover Type				Density	
A = Aspen	H = Hemlock	N = Marsh	U = Upland Brush	0 = Non Stocked	5 = Pole Timber Medium
B = Paper Birch	J = Jack Pine	O = Oak	UM = Upland Mixed	1 = Seedling Sapling Poor	6 = Pole Timber Well
C = Cedar	L = Lowland Brush	P = Lowland Poplar	V = Bog or Marsh	2 = Seedling Sapling Medium	7 = Saw Timber Poor
D = Tread Bog	LM = Lowland Mixed	Q = Mixed Swamp Conifer	W = White Pine	3 = Seedling Sapling Well	8 = Saw Timber Medium
E = Swamp Hdwoods	M = Mpl, Bch, Brch	R = Red Pine	X = Non Stocked	4 = Pole Timber Poor	9 = Saw Timber Well
F = Spruce Fir	MC = Mixed Conifer	S = Black Spruce	Z = Water		
G = Grass	MD = Mixed Deciduous	T = Tamarack			

PU	Acres
1	29.9

South of the Fen SBW
Compartment 6
29.9 Acres

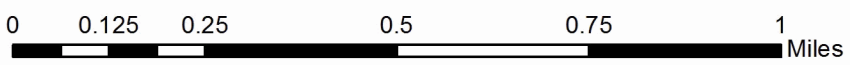
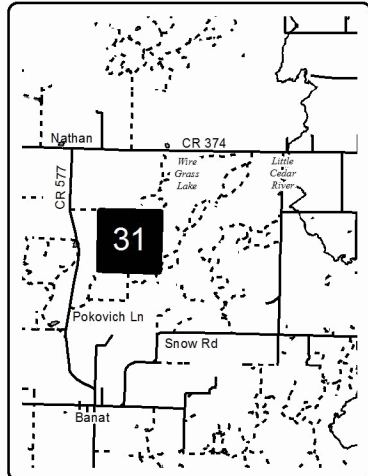


gps coordinates
 N45.5506 W-87.6866

Legend

- Against State (Red)
- Private Line (Blue)
- County Gravel Road
- Poor Dirt Roads
- Section Corners
- 31 Section Number
- State Land Boundary
- ① Payment Unit
- PVT Private Property
- Streams

Locator Map
 1:200,000



TIMBER SALE INFORMATION

Pine Trail (33-009-16)

Delta County (Advertised Price \$432,116.65)

SALE NOTE: A pre sale conference prior to cutting in any unit will be required with the sale administrator to lay out crossing locations along the Days River pathway. Note: the red pine pulpwood volumes include red pine sawlogs.

A recreation site such as a trail, pathway, or campground is within the sale area or the vicinity. Certain restrictions/specifications may be applicable including time restrictions.

A timber sale contract for this lump sum, sealed bid timber sale will be awarded to the responsible bidder offering the highest sealed bid price. Bids must be at or above the following advertised price for each species:

<u>PRODUCTS & SPECIES</u>	<u>ESTIMATED UNITS*</u>	<u>ADVERTISED PRICE</u>
Sawtimber		
Paper Birch	2.00 MBF	\$ 113.00 / MBF
Red Maple	0.50 MBF	\$ 243.00 / MBF
Pulpwood		
Balsam Fir	49.00 Cords	\$ 25.30 / Cord
Jack Pine	7.00 Cords	\$ 46.35 / Cord
Mixed Hardwood	43.00 Cords	\$ 34.60 / Cord
Mixed Spruce	378.00 Cords	\$ 25.60 / Cord
N. White Cedar	106.00 Cords	\$ 31.40 / Cord
Quaking Aspen	70.00 Cords	\$ 31.35 / Cord
Red Pine	5,330.00 Cords	\$ 77.55 / Cord
Tamarack	10.00 Cords	\$ 17.60 / Cord

* The total volume is statistically estimated within plus (+) or minus (-) 12.12 percent. The estimated units are final and not subject to adjustment. Prospective bidders are urged to examine this timber and to make their own estimates of quantity and quality.

BOND AND PAYMENT SCHEDULE:

1. A bond in the amount of \$21,606.00 to insure faithful performance of the conditions of the contract will be deposited by the successful bidder within 21 days of the sale award.
2. Cutting in any sale or unit without the required advance payment would be considered a trespass.
3. Total payment must be paid in advance or according to the following schedule:
 - (a) Ten percent (10%) of the sale value must be paid within 21 days of the sale award.
 - (b) The 10% down payment will be credited towards the first unit cut.
4. If no cutting takes place, the 10% down payment will not be refunded.
5. Operations on the contract issued will terminate on 12/31/2019.

Description of Timber by Payment Unit (PU)

PU	MARKET GROUP	PRODUCT	QUANTITY	UNIT	ACRES	ADVERTISE PRICE
1	Red Pine	Pulpwood	1,444.0	Cords	31.9	\$111,982.20
2	Red Pine	Pulpwood	838.0	Cords	65.9	\$64,986.90
3	Paper Birch Red Maple Balsam Fir Mixed Hardwood Mixed Spruce Quaking Aspen Red Pine	Sawtimber Pulpwood	0.5 0.5 29.0 15.0 21.0 53.0 74.0	MBF MBF Cords Cords Cords Cords Cords	7.9	\$9,368.55
4	Paper Birch Balsam Fir Mixed Hardwood Mixed Spruce N. White Cedar Quaking Aspen Red Pine Tamarack	Sawtimber Pulpwood	1.5 20.0 28.0 357.0 106.0 3.0 3.0 10.0	MBF Cords Cords Cords Cords Cords Cords Cords	15.4	\$14,614.60
5	Red Pine	Pulpwood	696.0	Cords	54.7	\$53,974.80
6	Jack Pine Quaking Aspen Red Pine	Pulpwood	1.0 1.0 226.0	Cords Cords Cords	22.0	\$17,604.00
7	Jack Pine Quaking Aspen Red Pine	Pulpwood	1.0 3.0 430.0	Cords Cords Cords	41.9	\$33,486.90
8	Jack Pine Quaking Aspen Red Pine	Pulpwood	1.0 2.0 359.0	Cords Cords Cords	35.0	\$27,949.50
9	Jack Pine Quaking Aspen Red Pine	Pulpwood	1.0 3.0 400.0	Cords Cords Cords	39.0	\$31,160.40
10	Jack Pine Quaking Aspen Red Pine	Pulpwood	1.0 2.0 252.0	Cords Cords Cords	24.6	\$19,651.65
11	Jack Pine Quaking Aspen Red Pine	Pulpwood	2.0 3.0 483.0	Cords Cords Cords	47.1	\$37,643.40
12	Red Pine	Pulpwood	125.0	Cords	14.9	\$9,693.75
TOTAL:			2.5	MBF		
TOTAL:			5,993.0	Cords		

Sale Specific Conditions & Requirements

Sale Name: Pine Trail

Sale Number: 33-009-16 Seq#: 2

1 - Sale Area

1.2 - Boundaries

1.2.1 - Painted boundaries (1/14)

The sale boundary and Payment Unit boundaries are marked and identified by blue, red and yellow paint. Exterior sale boundary lines against private property are marked with blue paint. Exterior sale boundary lines against state are marked with red paint. Interior Payment Unit boundaries are marked with yellow paint. The painted boundary line trees are not Included Timber and are to be protected unless marked with orange paint. Yellow painted trees designating an interior Payment Unit boundary are only to be cut when all surrounding Payment Units have been paid.

2 - Timber Specifications

2.1 - Included Timber

2.1.1 - Clearcut unit(s) with unmerchantable trees (6/14)

Within Payment Unit(s) 1 and 4, cut all trees that are two (2) inches or more at DBH except do not cut any green marked trees within Payment Unit 4.

2.1.3 - Cut tree marked unit(s) (12/08)

Within Payment Unit(s) 2, 5, 6, 7, 8, 9, 10, 11, and 12, all trees are designated for cutting when marked with orange paint above and below stump height, regardless of merchantability.

2.1.4 - Species designation unit(s) (12/08)

Within Payment Unit(s) 3, all aspen, paper birch, red maple, balsam fir, spruce and pine trees greater than 14 inches (DBH) diameter at breast height are designated for cutting which meet minimum piece specifications in 2.2 - Utilization. For timber sale administration purposes, pine trees at 14 inches DBH are 16.5 inches at stump diameter measured at a point 12 inches above ground level.

2.1.11 - Description of timber note (2/04)

Note that red pine pulpwood includes sawlog volumes.

2.2 - Utilization

2.2.3 - Stump heights (4/07)

Stump heights within Payment Unit(s) 1, 2, 5, 6, 7, 8, 9, 10, 11, and 12 shall not exceed 6 inches for all trees.

3 - Payments

3.3 - Pre-measured Sales

3.3.4 - Dividing payment units (7/14)

Payment Unit(s) with a purchase value of \$15,000 dollars or more may be divided at the request of the Purchaser and upon approval of the Unit Manager. Dividing Payment Units is a contract modification which requires a Timber Sale Contract Supplement. There will be only one division per Payment Unit unless agreed to by the Unit Manager.

3.4 - Damaged Timber

3.4.1 - Damaged timber (6/14)

General Condition and Requirement 3.4 Damaged Timber, defines liquidated damages for undesignated live merchantable trees which are cut or injured. In addition, extreme care should be taken to avoid damage to tree seedlings and saplings.

In areas with significant red pine regeneration, if more than 25% of the tree seedlings or saplings (1/4" to 4.5" DBH) within a specified portion of the sale area are damaged, liquidated damages will be assessed at \$100 dollars per acre for all acreage within that specified portion of the sale area that was damaged.

4 - Transportation

4.1 - Construction

4.1.6 - Road construction (1/09)

Construction of new roads or improvements of existing roads shall be done in such a way as to minimize the environmental and visual impacts. Merchantable trees shall be cut and utilized unless otherwise directed. Non-merchantable trees shall be severed and laid flat on the ground. Slash shall be scattered, and not left in windrows and kept a minimum of 10 feet back from the road edge. Stumps shall be set upright, not left on edge, and be moved at least 10 feet away from the road edge. Disturbed soil shall be feathered into the woods and not left in berms or windrows.

4.1.7 - Road closure (10/11)

All new roads built into the sale must be blocked to vehicle traffic upon completion of the sale. Overgrown roads that are reopened shall be considered new roads. In general, this will require constructing a four (4') foot high berm of stumps and logs covered with earth. Stumps and brush must be placed along the remainder of the trail. Contact the sale administrator for specific details of design and placement.

4.2 - Maintenance

4.2.2 - Fill material (4/07)

To maintain roads, fill material may be needed in areas where "holes" exist or may be expected to develop. This fill material should be placed before trucking begins. Contact the sale administrator regarding the availability of onsite sand or gravel from adjacent State-owned lands.

4.2.4 - Grading (12/14)

For completion of the sale, state forest roads must be graded. In general, this will require a road grader or bull dozer to shape up the roads after forest products have been hauled off site. This includes cleaning of drainage areas, grading, crowning and filling with gravel, if necessary. The grading equipment to be used must be approved by the Unit Manager or his/her representative.

4.2.5 - Two wheel drive condition (2/04)

All existing trail roads on and adjacent to the sale area must be passable by two-wheel drive traffic for the duration of the sale.

4.4 - Access

4.4.2 - Alternate route on private property (2/04)

It is the Purchaser's responsibility to obtain access across private land for any routes other than the route shown on the sale map.

5 - Operations

5.1 - Notification

5.1.1 - Pre-sale conference (10/11)

A pre-sale conference on site between the Purchaser and sale administrator is required prior to beginning a Payment Unit to determine landing and road locations. The Unit Manager or his/her representative must be contacted at least 5 days in advance to schedule the conference.

5.1.4 - Post-sale conference (6/11)

A post-sale conference on site between the Purchaser and sale administrator is required 5 days prior to the completion of active logging operations to determine clean-up and repair of landings, road edges, and the fulfillment of other contract specifications.

5.1.6 - Utility R.O.W. (1/15)

It is the responsibility of the Purchaser to obtain permission from the utility company to utilize the power line R.O.W. for operations.

5.2 - Conduct of Operations

5.2.1 - Slash

5.2.1.2 - Slash Removal

5.2.1.2.1 - Slash removal, right-of-way (9/16)

All slash must be removed at least 15 feet from the cleared right-of-way of forest roads.

5.2.1.2.6 - Slash removal, general (7/05)

All slash must be removed from Payment Unit 1. The reason is because this will assist in the scarification done post harvest.

5.2.1.8 - Slash height (12/08)

No slash or tree tops may exceed 24 inches in height.

5.2.2 - Hazard Trees/Snags

5.2.2.1 - Den trees (2/04)

Obvious hollow and/or den trees shall be protected and left standing unless they are a safety hazard.

5.2.3 - Operating Restrictions

5.2.3.1 - Operating restrictions (9/11)

Within Payment Unit(s) 3, 5, 6, 7, 8, 9, 10, 11, and 12, unless changed by written agreement, cutting, skidding, and hauling are limited to the period of July 15th to December 1st. This restriction is because of the cross country ski trail. If weather permits (snow free), work could continue after December 1st with the permission of the unit manager.

5.2.3.3 - Bark slippage restriction (3/09)

Within Payment Unit(s) 2, 5, 6, 7, 8, 9, 10, 11, and 12, unless changed by written agreement, cutting and skidding are not permitted during the period of April 15 to July 15. This restriction is because of bark slippage.

5.2.3.6 - Bark beetle restriction (12/08)

In the event drought creates a high risk of pine bark beetle infestation, pine is not to be cut during the period March 1 through July 1, unless all portions of trees greater than two inches in diameter are removed from the sale area, reduced to chips, or treated to the satisfaction of the Unit Manager or his/her representative, within fifteen days of being severed from the stump. Pine log decks, pulpwood piles and treetops that are piled for chipping in the fall or winter within a 1/4 mile of susceptible sites must be removed before March 15. Residual slash must not be placed in piles or rows and must be spread over the site for quick drying. The Department of Natural Resources will exercise this specification if the risk of damage warrants.

5.2.22 - Operating Caution

5.2.22.1 - Operating caution (6/11)

It is recommended, but not required, that within Payment Unit(s) 4, cutting, skidding, and hauling occur during a dry summer or snow free winter conditions. The reason for the recommendation is because within the sale unit area is low and wet and will require crossing the Days River pathway in the winter months for access.

5.2.37 - No decking areas (12/08)

No decking is allowed within 50 feet of the powerline without permission of the powerline company. No decking is allowed in the Days River parking lot; see GPS point on the Timber Sale Map.

5.2.40 - Pathway protection (10/10)

The Days River pathway is a bike, hiking, ski trail and is shown on the Timber Sale Map. Do not cut trees or damage posts with blue pathway markers. Maintain a 20-foot wide slash, debris, and rut free zone daily, using the pathway as the centerline. Do not run equipment down the pathway. Skidding across the trail may only occur in locations approved by the sale administrator.

5.2.41 - Snowmobile trail protection (9/11)

The road on the west side is a snowmobile and ORV trail and is shown on the Timber Sale Map. Do not cut or damage posts with orange trail markers or traffic control signs. If the trail is used, it must be maintained and restored to a condition equal to or better than before the sale. If the trail is used for hauling from July 15th to December 1st, it must be graded to the satisfaction of the Unit Manager or his/her representative prior to December 1st. If the trail road is to be used for hauling during the snowmobile season, then a snow covered base must be left on the trail. Maintain a 20 foot wide slash, debris, and rut free zone daily using the snowmobile trail as the centerline. No decking of forest products will be permitted along the snowmobile and ORV trail and the trail will be maintained and not blocked during the ORV/ATV season.

5.4 - Soil Protection

5.4.1 - Rutting restriction, general (7/16)

Operations are to cease immediately if equipment and weather conditions result in rutting of roads and/or skid trails which is 12 inches or greater in depth and 50 feet in length. The Unit Manager or his/her representative may restrict hauling and/or skidding if ruts exceed the specified depth. With the Unit Manager or his/her representative's approval, the Purchaser may return to the area when the risk of rutting has decreased.

6 - Safety and Fire Prevention

6.2 - Signing

6.2.1 - Road posting (9/09)

The Purchaser is responsible for posting and maintaining caution signs on the access roads and the Days River Road that are being used prior to beginning operations. The road must be posted at locations designated by the timber sale administrator to warn of logging activity and truck traffic. Signs must be removed when harvest operations are suspended or completed. The Purchaser will provide these signs.

6.2.2 - Snowmobile trail posting (8/09)

The Purchaser is responsible for posting and maintaining caution signs on the snowmobile trail prior to beginning operations during the snowmobile season (approximately December 1 to March 31). The trail must be posted at appropriate distances from the sale area to warn of logging activity and truck traffic. Signs must be removed when harvest operations are suspended or completed. The Purchaser will provide these signs.

6.2.3 - Recreational trail posting (2/10)

The Purchaser is responsible for posting and maintaining caution signs on the Days River pathway and ATV/ORV trail prior to beginning operations. The trail must be posted at locations designated by the timber sale administrator to warn of logging activity and truck traffic at both ends of the trail. Signs must be removed when harvest operations are suspended or completed. The Purchaser will provide these signs.

7 - Other Conditions

7.3 - Contract Modifications

7.3.1 - Emerald Ash Borer

7.3.1.1 - Emerald ash borer, no ash or firewood on sale (2/05)

There is no ash or "firewood" in this sale, but it is located within an emerald ash borer quarantined area. The Director of the Michigan Department of Agriculture (MDA) by the authority of Act No. 72 of the Public Acts of 1945, as amended, and Quarantine Regulation No. 620, has promulgated this quarantine to prevent the further spread of this pest and sets forth: definitions, regulated articles, regulated areas, conditions of movement, violations and penalties, and special exemptions. The Purchaser must comply with this quarantine. Contact the MDA for further information.



TIMBER SALE MAP

This information provided by authority of Part 525, 1994 PA 451, as amended.

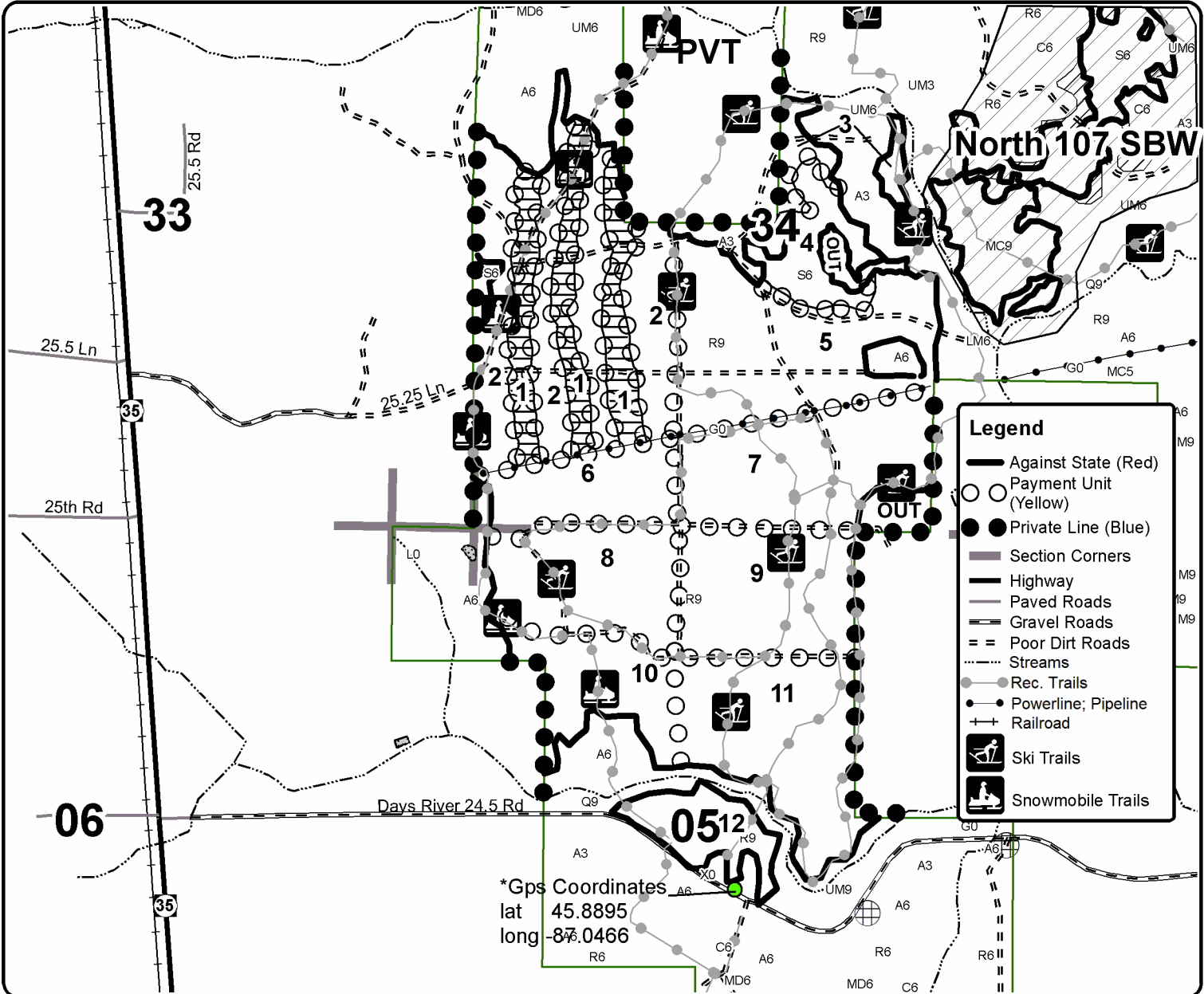
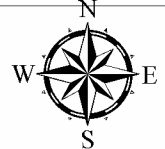
Sale Number	Year
33-009-16-01	16

Forest Management Unit Escanaba	County Delta	Mapped By Racine	Date 09/25/2016	Page 1	of 1
Township 40, 41N	Range 22W	Section(s) and Subdivision(s) See Proposal	Scale 1:15,840		

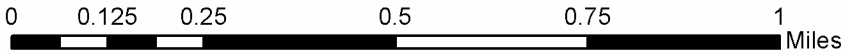
Cover Type				Density			
A = Aspen	H = Hemlock	N = Marsh	U = Upland Brush	0 = Non Stocked	5 = Pole Timber Medium		
B = Paper Birch	J = Jack Pine	O = Oak	UM = Upland Mixed	1 = Seedling Sapling Poor	6 = Pole Timber Well		
C = Cedar	L = Lowland Brush	P = Lowland Poplar	V = Bog or Marsh	2 = Seedling Sapling Medium	7 = Saw Timber Poor		
D = Treed Bog	LM = Lowland Mixed	Q = Mixed Swamp Conifer	W = White Pine	3 = Seedling Sapling Well	8 = Saw Timber Medium		
E = Swamp Hdwoods	M = Mpl, Bch, Brch	R = Red Pine	X = Non Stocked	4 = Pole Timber Poor	9 = Saw Timber Well		
F = Spruce Fir	MC = Mixed Conifer	S = Black Spruce	Z = Water				
G = Grass	MD = Mixed Deciduous	T = Tamarack					

PU	Acres	PU	Acres	PU	Acres	PU	Acres
1	31.9	4	15.4	7	41.9	10	24.6
2	65.9	5	54.7	8	35	11	47.1
3	7.9	6	22	9	39	12	14.9

Pine Trail
Compartment 107
400.3 Acres



*Gps Coordinates
 lat 45.8895
 long -84.0466



Menominee River SBW (33-023-17)
 ; Menominee COUNTY

In response to the notice of sale to be held 3:00 p.m. (local time) on May 30, 2017, I am hereby submitting my sealed bid (firm offer) for the following forest products to be cut. Bids for individual species must be at or above the advertised price. All non-responsive bid forms may be rejected.

<u>PRODUCTS & SPECIES</u>	<u>ESTIMATED VOLUME*</u>	<u>ADVERTISED PRICE</u>	<u>BID PRICE</u>
Sawtimber			
Red Oak	32.10 MBF	\$ 245.00/MBF	\$ _____
White Pine	4.10 MBF	\$ 72.00/MBF	\$ _____
Pulpwood			
Balsam Fir	81.00 Cords	\$ 25.30/Cord	\$ _____
Mixed Aspen	356.00 Cords	\$ 31.35/Cord	\$ _____
Mixed Hardwood	380.00 Cords	\$ 34.60/Cord	\$ _____
Mixed Spruce	554.00 Cords	\$ 25.60/Cord	\$ _____
N. White Cedar	771.00 Cords	\$ 31.40/Cord	\$ _____
Red Oak	104.00 Cords	\$ 19.00/Cord	\$ _____
Tamarack	72.00 Cords	\$ 17.60/Cord	\$ _____
White Pine	35.00 Cords	\$ 36.15/Cord	\$ _____

*The volumes are statistically estimated within plus (+) or minus (-) 10.63 percent. These estimated volumes are final and not subject to adjustment. Prospective bidders are urged to examine this timber and to make their own estimates of quantity and quality.

I understand that any or all bids may be rejected. All bids must be signed and all bid items must be bid or the bid form may be rejected. I also understand that consideration and awarding a contract will be based upon my past performance and ability to complete the contract based upon equipment and staffing subject to my control.

FEDERAL ID: _____ or SOCIAL SECURITY NUMBER: _____

Company or individual bidding: _____

Company representative's name: _____

Address: _____

City: _____ State: _____ Zip: _____

IF AVAILABLE, PLEASE PLACE THE PERSONALIZED LABEL FROM YOUR PROSPECTUS IN THE ABOVE BOX.

Individual or company representative's signature: _____ Date: _____

Phone number : _____ Email (optional): _____

THE WINNING BIDDER MUST COMPLETE THE VERIFICATION OF WORKER'S DISABILITY COMPENSATION ACT COMPLIANCE (ON REVERSE SIDE IF DOUBLE SIDED) WITHIN 21 DAYS OF SALE AWARD DATE



FOR DEPARTMENT USE ONLY
Sale Number (XX - XXX - XX - XX)
Forest Management Unit:

TIMBER SALE VERIFICATION OF WORKER'S DISABILITY COMPENSATION ACT COMPLIANCE

*As required by Act 317, P.A. 1969 (Worker's Compensation) and
Part 5 of Act 451 of 1994, as amended.*

VERIFICATION OF WORKER'S DISABILITY COMPENSATION ACT COMPLIANCE

- This verification must be completed and submitted within 21 days of contract award and prior to the issuance of the timber sale contract.
- In addition, if boxes 2B or 2C are checked, then Notice of Exclusion or Certificate of Insurance must be submitted within twenty-one (21) days of the contract award and prior to the issuance of the timber sale contract.
- All information must be typed or printed except for written signatures.

Please Check Appropriate Categories:

1. My business is organized as (you **must** check one of the boxes below):
 - A. Sole Proprietorship (individual)
 - B. Partnership
 - C. Corporation

2. You **must** check one of the boxes below:
 - A. I certify my business is a sole proprietorship and it has no employees but the sole proprietor. I am not subject to the Worker's Compensation Laws.
 - B. I certify my business has satisfied its obligation to the Worker's Compensation Act through the use of an approved Notice of Exclusion (BWC-337, Rev. 5/96). I will provide a copy of the Notice of Exclusion within 21 days of the contract award. (For questions or a copy of the BWC-337, please call the Worker's Compensation Bureau at 517-322-1195).
 - C. I certify my business has a Worker's Compensation Policy. I will provide an original Certificate of Insurance within twenty-one (21) days of the contract award.

3. If you have checked item 2(A) or 2(B), you **must** indicate the number of **both** full-time and part-time employees, other than yourself, including family members and active partners (if none, you must enter "0").

_____ Full-time Employees

_____ Part-time Employees

Name of Business		Federal ID (or) Social Security No.	
Address		Telephone ()	
City	State	ZIP	

I hereby certify that the above information is true and correct. I agree to notify the Michigan DNR of any changes that occur in factors affecting my coverage during any of my present and future operations.

Signature of Owner or Authorized Representative

Title

Date

Please complete the "SEALED BID" information on the next page

Pemene Creek SBW (33-024-17)
 ; Menominee COUNTY

In response to the notice of sale to be held 3:00 p.m. (local time) on May 30, 2017, I am hereby submitting my sealed bid (firm offer) for the following forest products to be cut. Bids for individual species must be at or above the advertised price. All non-responsive bid forms may be rejected.

<u>PRODUCTS & SPECIES</u>	<u>ESTIMATED VOLUME*</u>	<u>ADVERTISED PRICE</u>	<u>BID PRICE</u>
Sawtimber			
White Pine	69.20 MBF	\$ 72.00/MBF	\$ _____
Pulpwood			
Balsam Fir	120.00 Cords	\$ 25.30/Cord	\$ _____
Mixed Aspen	1,318.00 Cords	\$ 31.35/Cord	\$ _____
Mixed Hardwood	152.00 Cords	\$ 34.60/Cord	\$ _____
N. White Cedar	49.00 Cords	\$ 31.40/Cord	\$ _____
Red Oak	33.00 Cords	\$ 19.00/Cord	\$ _____
Red Pine	192.00 Cords	\$ 61.10/Cord	\$ _____
Tamarack	2.00 Cords	\$ 17.60/Cord	\$ _____
White Pine	528.00 Cords	\$ 36.15/Cord	\$ _____
White Spruce	117.00 Cords	\$ 25.60/Cord	\$ _____

*The volumes are statistically estimated within plus (+) or minus (-) 7.34 percent. These estimated volumes are final and not subject to adjustment. Prospective bidders are urged to examine this timber and to make their own estimates of quantity and quality.

I understand that any or all bids may be rejected. All bids must be signed and all bid items must be bid or the bid form may be rejected. I also understand that consideration and awarding a contract will be based upon my past performance and ability to complete the contract based upon equipment and staffing subject to my control.

FEDERAL ID: _____ or SOCIAL SECURITY NUMBER: _____

Company or individual bidding: _____

Company representative's name: _____

Address: _____

City: _____ State: _____ Zip: _____

IF AVAILABLE, PLEASE PLACE THE PERSONALIZED LABEL FROM YOUR PROSPECTUS IN THE ABOVE BOX.

Individual or company representative's signature: _____ Date: _____

Phone number : _____ Email (optional): _____

THE WINNING BIDDER MUST COMPLETE THE VERIFICATION OF WORKER'S DISABILITY COMPENSATION ACT COMPLIANCE (ON REVERSE SIDE IF DOUBLE SIDED) WITHIN 21 DAYS OF SALE AWARD DATE

South of the Fen SBW (33-025-17)
 ; Menominee COUNTY

In response to the notice of sale to be held 3:00 p.m. (local time) on May 30, 2017, I am hereby submitting my sealed bid (firm offer) for the following forest products to be cut. Bids for individual species must be at or above the advertised price. All non-responsive bid forms may be rejected.

<u>PRODUCTS & SPECIES</u>	<u>ESTIMATED VOLUME*</u>	<u>ADVERTISED PRICE</u>	<u>BID PRICE</u>
Sawtimber			
Basswood	5.00 MBF	\$ 166.00/MBF	\$ _____
Red Oak	1.10 MBF	\$ 245.00/MBF	\$ _____
Pulpwood			
Balsam Fir	126.00 Cords	\$ 25.30/Cord	\$ _____
Mixed Aspen	465.00 Cords	\$ 31.35/Cord	\$ _____
Mixed Hardwood	199.00 Cords	\$ 34.60/Cord	\$ _____
N. White Cedar	33.00 Cords	\$ 31.40/Cord	\$ _____
Tamarack	2.00 Cords	\$ 17.60/Cord	\$ _____
White Spruce	46.00 Cords	\$ 25.60/Cord	\$ _____

*The volumes are statistically estimated within plus (+) or minus (-) 13.21 percent. These estimated volumes are final and not subject to adjustment. Prospective bidders are urged to examine this timber and to make their own estimates of quantity and quality.

I understand that any or all bids may be rejected. All bids must be signed and all bid items must be bid or the bid form may be rejected. I also understand that consideration and awarding a contract will be based upon my past performance and ability to complete the contract based upon equipment and staffing subject to my control.

FEDERAL ID: ____ - ____ - ____ or SOCIAL SECURITY NUMBER: ____ - ____ - ____
 Company or individual bidding: _____
 Company representative's name: _____
 Address: _____
 City: _____ State: _____ Zip: _____

IF AVAILABLE, PLEASE PLACE THE PERSONALIZED LABEL FROM YOUR PROSPECTUS IN THE ABOVE BOX.

Individual or company representative's signature: _____ Date: _____

Phone number : _____ Email (optional): _____

THE WINNING BIDDER MUST COMPLETE THE VERIFICATION OF WORKER'S DISABILITY COMPENSATION ACT COMPLIANCE (ON REVERSE SIDE IF DOUBLE SIDED) WITHIN 21 DAYS OF SALE AWARD DATE



FOR DEPARTMENT USE ONLY
Sale Number (XX - XXX - XX - XX)
Forest Management Unit:

TIMBER SALE VERIFICATION OF WORKER'S DISABILITY COMPENSATION ACT COMPLIANCE

*As required by Act 317, P.A. 1969 (Worker's Compensation) and
Part 5 of Act 451 of 1994, as amended.*

VERIFICATION OF WORKER'S DISABILITY COMPENSATION ACT COMPLIANCE

- This verification must be completed and submitted within 21 days of contract award and prior to the issuance of the timber sale contract.
- In addition, if boxes 2B or 2C are checked, then Notice of Exclusion or Certificate of Insurance must be submitted within twenty-one (21) days of the contract award and prior to the issuance of the timber sale contract.
- All information must be typed or printed except for written signatures.

Please Check Appropriate Categories:

1. My business is organized as (you **must** check one of the boxes below):
 - A. Sole Proprietorship (individual)
 - B. Partnership
 - C. Corporation

2. You **must** check one of the boxes below:
 - A. I certify my business is a sole proprietorship and it has no employees but the sole proprietor. I am not subject to the Worker's Compensation Laws.
 - B. I certify my business has satisfied its obligation to the Worker's Compensation Act through the use of an approved Notice of Exclusion (BWC-337, Rev. 5/96). I will provide a copy of the Notice of Exclusion within 21 days of the contract award. (For questions or a copy of the BWC-337, please call the Worker's Compensation Bureau at 517-322-1195).
 - C. I certify my business has a Worker's Compensation Policy. I will provide an original Certificate of Insurance within twenty-one (21) days of the contract award.

3. If you have checked item 2(A) or 2(B), you **must** indicate the number of **both** full-time and part-time employees, other than yourself, including family members and active partners (if none, you must enter "0").

_____ Full-time Employees

_____ Part-time Employees

Name of Business		Federal ID (or) Social Security No.	
Address		Telephone ()	
City	State	ZIP	

I hereby certify that the above information is true and correct. I agree to notify the Michigan DNR of any changes that occur in factors affecting my coverage during any of my present and future operations.

Signature of Owner or Authorized Representative

Title

Date

Please complete the "SEALED BID" information on the next page

Pine Trail (33-009-16)
; Delta COUNTY

In response to the notice of sale to be held 3:00 p.m. (local time) on May 30, 2017, I am hereby submitting my sealed bid (firm offer) for the following forest products to be cut. Bids for individual species must be at or above the advertised price. All non-responsive bid forms may be rejected.

<u>PRODUCTS & SPECIES</u>	<u>ESTIMATED VOLUME*</u>	<u>ADVERTISED PRICE</u>	<u>BID PRICE</u>
Sawtimber			
Paper Birch	2.00 MBF	\$ 113.00/MBF	\$ _____
Red Maple	0.50 MBF	\$ 243.00/MBF	\$ _____
Pulpwood			
Balsam Fir	49.00 Cords	\$ 25.30/Cord	\$ _____
Jack Pine	7.00 Cords	\$ 46.35/Cord	\$ _____
Mixed Hardwood	43.00 Cords	\$ 34.60/Cord	\$ _____
Mixed Spruce	378.00 Cords	\$ 25.60/Cord	\$ _____
N. White Cedar	106.00 Cords	\$ 31.40/Cord	\$ _____
Quaking Aspen	70.00 Cords	\$ 31.35/Cord	\$ _____
Red Pine	5,330.00 Cords	\$ 77.55/Cord	\$ _____
Tamarack	10.00 Cords	\$ 17.60/Cord	\$ _____

*The volumes are statistically estimated within plus (+) or minus (-) 12.12 percent. These estimated volumes are final and not subject to adjustment. Prospective bidders are urged to examine this timber and to make their own estimates of quantity and quality.

I understand that any or all bids may be rejected. All bids must be signed and all bid items must be bid or the bid form may be rejected. I also understand that consideration and awarding a contract will be based upon my past performance and ability to complete the contract based upon equipment and staffing subject to my control.

FEDERAL ID: _____ or SOCIAL SECURITY NUMBER: _____

Company or individual bidding: _____

Company representative's name: _____

Address: _____

City: _____ State: _____ Zip: _____

IF AVAILABLE, PLEASE PLACE THE PERSONALIZED LABEL FROM YOUR PROSPECTUS IN THE ABOVE BOX.

Individual or company representative's signature: _____ Date: _____

Phone number : _____ Email (optional): _____

THE WINNING BIDDER MUST COMPLETE THE VERIFICATION OF WORKER'S DISABILITY COMPENSATION ACT COMPLIANCE (ON REVERSE SIDE IF DOUBLE SIDED) WITHIN 21 DAYS OF SALE AWARD DATE



FOR DEPARTMENT USE ONLY
Sale Number (XX - XXX - XX - XX)
Forest Management Unit:

TIMBER SALE VERIFICATION OF WORKER'S DISABILITY COMPENSATION ACT COMPLIANCE

*As required by Act 317, P.A. 1969 (Worker's Compensation) and
Part 5 of Act 451 of 1994, as amended.*

VERIFICATION OF WORKER'S DISABILITY COMPENSATION ACT COMPLIANCE

- This verification must be completed and submitted within 21 days of contract award and prior to the issuance of the timber sale contract.
- In addition, if boxes 2B or 2C are checked, then Notice of Exclusion or Certificate of Insurance must be submitted within twenty-one (21) days of the contract award and prior to the issuance of the timber sale contract.
- All information must be typed or printed except for written signatures.

Please Check Appropriate Categories:

1. My business is organized as (you **must** check one of the boxes below):
 - A. Sole Proprietorship (individual)
 - B. Partnership
 - C. Corporation
2. You **must** check one of the boxes below:
 - A. I certify my business is a sole proprietorship and it has no employees but the sole proprietor. I am not subject to the Worker's Compensation Laws.
 - B. I certify my business has satisfied its obligation to the Worker's Compensation Act through the use of an approved Notice of Exclusion (BWC-337, Rev. 5/96). I will provide a copy of the Notice of Exclusion within 21 days of the contract award. (For questions or a copy of the BWC-337, please call the Worker's Compensation Bureau at 517-322-1195).
 - C. I certify my business has a Worker's Compensation Policy. I will provide an original Certificate of Insurance within twenty-one (21) days of the contract award.
3. If you have checked item 2(A) or 2(B), you **must** indicate the number of **both** full-time and part-time employees, other than yourself, including family members and active partners (if none, you must enter "0").

_____ Full-time Employees

_____ Part-time Employees

Name of Business		Federal ID (or) Social Security No.	
Address		Telephone ()	
City	State	ZIP	

I hereby certify that the above information is true and correct. I agree to notify the Michigan DNR of any changes that occur in factors affecting my coverage during any of my present and future operations.

Signature of Owner or Authorized Representative

Title

Date

Please complete the "SEALED BID" information on the next page