



**DEPARTMENT OF NATURAL RESOURCES
STATE OF MICHIGAN**

TIMBER SALE PROSPECTUS #5944

SCHEDULED SALE DATE AND TIME: 3:00 p.m. (local time) on June 29, 2017.

LOCATION: ESCANABA OFFICE, 6833 HWY 2, 41 & M-35, GLADSTONE, MI 49837.

PROSPECTUS NOTE: The bidder is advised to inspect the sale area and review the location, estimated volumes, operating costs and contract terms of proposed sales. Please be aware that some landowners may request 60 days or more notice for access across their land.

Notice is hereby given that bids will be received by the Unit Manager, ESCANABA MANAGEMENT UNIT, for certain timber on the following described lands:

PAST THE GATE MWR (33-004-17)

Delta County, Advertised Price \$11,356.70, 30.0 Acres, Hardwood, Sugar Maple.

SALE NOTE: This sale is included in a research project. The sale expires on March 15th, 2018. No extensions will be allowed on this sale. However, with stipulations (see spec 7.2.7), a free 1 year extension can be applied to another State Forest Timber Sale Contract.

All slash less than nine inches (<9") may not be removed from the sale area, e.g. tops. These tops are to be left intact where they fall with branches remaining upright. In addition, trees less than nine inches (<9") must be cut and left.

The sale must be cut and skid between August 15th, 2017 and March 15th, 2018. The Department has a management easement on the closed access road into the sale. Contact the Escanaba Forest Resources Division office for landowner contact information and a key for access.

Access may be through private land.

DETEMPLE MWR (33-026-17)

Menominee County, Advertised Price \$14,053.60, 28.5 Acres, Aspen, Hardwood.

SALE NOTE: This sale has a very short contract length, to facilitate a research project. The sale must be cut and skid between August 15, 2017 and March 15, 2018. No extensions will be given. A free extension may be applied towards one other State Forest Timber Sale Contract, see specification 7.2.7 for details.

DETEMPLE SBW (33-027-17)

Menominee County, Advertised Price \$17,185.40, 34.8 Acres, Hardwood, Spruce/Fir/Tamarack.

SALE NOTE: The spruce budworm is present within the sale and has caused some defoliation, but no mortality has occurred yet. The Purchaser should harvest this sale as soon as possible.

County Line MWR (33-028-17)

Menominee County, Advertised Price \$43,907.75, 31.7 Acres, Hardwood, Sugar Maple.

SALE NOTE: In Payment Units 1 and 2, all slash less than nine inches (<9") top diameter outside bark at the small end may not be removed from the sale area. In addition, trees less than nine inches (<9") must be cut and left (See spec 2.2.8).

This sale has a very short contract length, to facilitate a research project. The sale must be cut and skid between August 15, 2017 and March 15, 2018. No extensions will be given. A free extension may be applied towards one other State Forest Timber Sale Contract, see specification 7.2.7 for details.

WESTMAN MWR (33-029-17)

Menominee County, Advertised Price \$13,312.25, 30.5 Acres, Hardwood, Sugar Maple.

SALE NOTE: This sale has a very short contract length, to facilitate a research project. The sale must be cut and skid between August 15, 2017 and March 15, 2018. No extensions will be given. A free extension may be applied towards one other State Forest Timber Sale Contract, see specification 7.2.7 for details.

BID INSTRUCTIONS (VER. 09/02/2016):

1. Scheduled Bid Location, Date, and Time (2/11)

Bids must be received by the Unit Manager, ESCANABA OFFICE, 6833 HWY 2, 41 & M-35, GLADSTONE, MI 49837, no later than 3:00 p.m. (local time) on June 29, 2017. For further information concerning this sale, contact Eric Thompson at 906-786-2354.

2. Bidder's Qualifications (5/16)

Purchaser shall obtain workers compensation insurance to cover claims under Michigan's Worker's Disability Compensation Act of 1969 or similar employee benefit act of any other state applicable to an employee. If all or part of a timber sale was prepared by a private contractor, the contractor and that contractor's company are not permitted to bid on the timber sale contract. Bids will not be accepted from individuals or companies appearing on the DNR/FRD No-Bid List. This list contains the names of purchasers who previously failed to execute a contract within 21-days or who have a history of poor performance.

3. Preparation of Sealed Bids (5/16)

Bid Forms may be completed online thru Michigan DNR Timber Sale Online Bidding (OLB) at www.michigan.gov/timberbidding or by completing the hardcopy Bid Form found in the Timber Sale Prospectus. Hardcopy Bid Forms shall be manually signed in ink. Registration in OLB is considered your 'signature' for all bids submitted thru that system. Bid prices must be entered for each species and product in the Bid Price column for all material subject to bidding and all fill-in blanks must be completed. If erasures or other changes appear on the hardcopy Bid Form, each erasure or change must be initialed by the person signing the bid.

4. Submission of Sealed Bids (5/16)

Bid forms may be obtained from the Unit Manager or thru OLB. Bids may be submitted hardcopy or thru OLB. All hardcopy bids must be submitted on the bid form and in an envelope clearly identified as described in this section. NOTE: Only one bid form per bid envelope. Sealed bids must be submitted to the Unit office designated in the prospectus and must be submitted at or prior to the time established in the prospectus. The envelope should show on the outside (a) the sale name or number and (b) the date and time of bid opening, as shown in the prospectus. Bids received after the time specified in the sale prospectus are late bids and will be rejected.

It is possible for a bidder to submit multiple bids on a single sale. For example, a bid may be submitted hardcopy and a bid may be submitted thru OLB. Or, two bidders from the same company could both submit bids on the same sale. If this were to happen, the State would accept all bids received and award the contract accordingly. All bidding and contractual requirements would apply to all bids received.

5. Public Opening of Sealed Bids (7/16)

If conditions permit, the sealed bids will be publicly opened and posted at the time and place set in the prospectus.

If a bidder, present at a bid opening, has submitted bids on more than one sale, that bidder may withdraw their unopened bid envelopes or announce the withdrawal of their online bid after being declared the successful bidder on one sale.

6. Award of Contract (1/11)

Award of the contract will be made to the Bidder whose bid, conforming to the prospectus, is most advantageous to the State of Michigan on the basis of total value at rates bid for the estimated quantities. The State reserves the right to reject any bid or waive any minor irregularity in bids received. A written award mailed (or otherwise furnished) to the successful Bidder shall be deemed to result in a binding contract without further action by either party.

7. Down Payment (1/11)

The Bidder to whom award is made must make a down payment within 21 days of the sale award. The amount of the down payment will be calculated as shown in the Bond and Payment Schedule of this prospectus. Only cash may be used to meet this requirement.

8. Performance Security (1/11)

As guarantee of faithful performance, a cash bond, certificate of deposit, surety bond or irrevocable letter of credit (LOC) is required within 21 days of the sale award. The amount of the performance security is shown in the Bond and

Payment Schedule of this prospectus. If an LOC or surety is used, the coverage must extend for at least 6 months beyond the contract expiration.

9. Timber Sale Contract (9/14)

Additional conditions and requirements common to all timber sales are listed on the timber sale contract (R4031) and are available on line at www.michigan.gov/timber. Contact the Unit Manager for additional information or a sample contract. Within 21 days of the date of the award letter, the bidder must sign the contract and provide the required down payment, performance security, and verification of worker's disability compensation. The down payment and performance security shall be in accordance with the provisions of the timber sale contract, in the sums stated in this prospectus. If these actions are not taken, then the Bidder, the Bidder's corporation, and the corporation's principals may not be permitted to bid on State timber sales for a period of 1 year. In addition, the Bidder certifies that if awarded this contract, the Bidder will complete the timber sale contract in accordance with its terms and any modifications thereof including requirements to purchase, cut, and remove the included timber by the expiration date.

10. Disclaimer of Estimates and Bidder's Warranty of Inspection (7/16)

Before submitting this bid, the Bidder is advised and cautioned to inspect the sale area, review the requirements of the sale contract, and take other steps as may be reasonably necessary to ascertain the location, estimated volumes, construction estimates, and operating costs of the proposed sale. Failure to do so will not relieve the Bidder from responsibility for completing the contract.

The Bidder warrants that this bid is submitted solely on the basis of the Bidder's examination and inspection of the quality and quantity of the timber offered for sale and the Bidder's opinion of the value thereof and the costs of recovery. No reliance should be placed on the State of Michigan's estimates of timber quality, quantity or costs of recovery. Bidder further acknowledges that the State of Michigan: (i) expressly disclaims any warranty of fitness of timber for any purpose; (ii) offers this timber as is without any warranty of quality (merchantability) or quantity and (iii) expressly disclaims any warranty as to the quantity or quality of timber sold.

11. Certification and Chain-of-Custody (10/14)

Unless otherwise indicated in the contract under section 7 – Other Conditions of the Sale Specific Conditions & Requirements, the area encompassed by this timber sale is certified to the standards of the Forest Stewardship Council (FSC) - Certificate #SCS-FM/COC-00090N and the Sustainable Forestry Initiative (SFI) - Certificate #NSF-SFIS-5Y031-SF5. Forest products from this sale may be delivered to the mill as "FSC 100% and / or SFI certified" as long as the contractor hauling the forest products is chain-of-custody (COC) certified or covered under a COC certificate from the destination mill. The purchaser is responsible for maintaining COC after leaving the sale area.

12. Good Neighbor Authority (GNA) Requirements (7/16)

If the name of this timber sales contains the acronym GNA, it is authorized by the Good Neighbor Authority (GNA) and covered by various agreements between the U.S. Forest Service and the State. The timber sale occurs on federal land and the following conditions apply:

GNA contracts on US Forest Service land will not be awarded to purchasers on the Federal list of excluded parties. The System for Award Management (SAM) will be checked for active excluded parties prior to award of contract. In addition, the Bidder to whom award is made must complete an Assurance Regarding Felony Conviction or Tax Delinquent Status for Corporate Applicants (AD-3031).

13. Good Neighbor Authority (GNA) Requirements, con't (9/16)

Bidder certifies, by signing this bid form, that to the best of Bidder's knowledge that the following representations are accurate and complete.

- a. That the Bidder and its principals are not presently debarred, suspended, proposed for debarment, declared ineligible, or voluntary excluded from timber sales (covered transactions) by any Federal department or agency.
- b. That the Bidder and its principals have not within a 3-year period preceding this bid been convicted of or had a civil judgment rendered against them for commission of fraud or a criminal offense in connection with obtaining, attempting to obtain, or performing a public (Federal, State, or local) transaction or contract under a public transaction; violation of Federal or State antitrust statutes or commission of embezzlement, theft, forgery, bribery, falsification or destruction of records, making false statements, or receiving stolen property.

c. That the Bidder and its principals are not presently indicted for or otherwise criminally or civilly charged by a governmental entity (Federal, State, or local) with commission of any of the offenses enumerated in paragraph b of this certification.

d. That the Bidder and its principals have not within a 3-year period preceding this bid had one or more public transactions (Federal, State, or local) terminated for breach or default of a timber or forest product contract.

Bidders that cannot certify this requirement, in whole or in part, shall submit an explanation with their bid.

KEITH CREAGH

Director

TIMBER SALE INFORMATION

PAST THE GATE MWR (33-004-17)

Delta County (Advertised Price \$11,356.70)

SALE NOTE: This sale is included in a research project. The sale expires on March 15th, 2018. No extensions will be allowed on this sale. However, with stipulations (see spec 7.2.7), a free 1 year extension can be applied to another State Forest Timber Sale Contract.

All slash less than nine inches (<9") may not be removed from the sale area, e.g. tops. These tops are to be left intact where they fall with branches remaining upright. In addition, trees less than nine inches (<9") must be cut and left.

The sale must be cut and skid between August 15th, 2017 and March 15th, 2018. The Department has a management easement on the closed access road into the sale. Contact the Escanaba Forest Resources Division office for landowner contact information and a key for access.

Access may be through private land.

A timber sale contract for this lump sum, sealed bid timber sale will be awarded to the responsible bidder offering the highest sealed bid price. Bids must be at or above the following advertised price for each species:

<u>PRODUCTS & SPECIES</u>	<u>ESTIMATED UNITS*</u>	<u>ADVERTISED PRICE</u>
Sawtimber		
Basswood	4.20 MBF	\$ 118.00 / MBF
Red Maple	1.80 MBF	\$ 178.00 / MBF
Sugar Maple	31.20 MBF	\$ 290.00 / MBF
Pulpwood		
Mixed Hardwood	59.00 Cords	\$ 25.30 / Cord

* The total volume is statistically estimated within plus (+) or minus (-) 22.34 percent. The estimated units are final and not subject to adjustment. Prospective bidders are urged to examine this timber and to make their own estimates of quantity and quality.

BOND AND PAYMENT SCHEDULE:

1. A bond in the amount of \$1,000.00 to insure faithful performance of the conditions of the contract will be deposited by the successful bidder within 21 days of the sale award.
2. Cutting in any sale or unit without the required advance payment would be considered a trespass.
3. Total payment must be paid in advance or according to the following schedule:
 - (a) Ten percent (10%) of the sale value must be paid within 21 days of the sale award.
 - (b) The remainder is due before cutting begins.
4. If no cutting takes place, the 10% down payment will not be refunded.
5. Operations on the contract issued will terminate on 03/15/2018.

Description of Timber by Payment Unit (PU)

PU	MARKET GROUP	PRODUCT	QUANTITY	UNIT	ACRES	ADVERTISE PRICE
1	Basswood	Sawtimber	4.2	MBF	30.0	\$11,356.70
	Red Maple		1.8	MBF		
	Sugar Maple		31.2	MBF		
	Mixed Hardwood	Pulpwood	59.0	Cords		
	<i>Basswood</i>		5.0	<i>Cords</i>		
	<i>Red Maple</i>		8.0	<i>Cords</i>		
	<i>Sugar Maple</i>		46.0	<i>Cords</i>		
TOTAL:			37.2	MBF		
TOTAL:			59.0	Cords		

Sale Specific Conditions & Requirements

Sale Name: PAST THE GATE MWR

Sale Number: 33-004-17 Seq#: 1

1 - Sale Area

1.2 - Boundaries

1.2.1 - Painted boundaries (1/14)

The sale boundary is marked and identified by red paint. Exterior sale boundary lines against state are marked with red paint. Interior sale boundaries are marked with yellow paint, designating patch cuts.

2 - Timber Specifications

2.1 - Included Timber

2.1.3 - Cut tree marked unit(s) (12/08)

Within Payment Unit(s) 1, all trees are designated for cutting when marked with orange paint above and below stump height, regardless of merchantability. In addition, within Payment Unit 1, cut all trees that are two (2) inches or more at DBH within the designated patch-cut areas (bounded by yellow paint). Yellow painted boundary trees are not to be harvested unless marked with orange paint. The total area of the patch cuts is 1.95 acres with each patch being 0.15 acres in size. Thirteen patch cut areas are located within the 30 acre treatment area.

2.2 - Utilization

2.2.8 - Utilization and removal (5/14)

In Payment Unit 1, all slash less than nine inches (<9") top diameter outside the bark at the small end may not be removed from the sale area, e.g. tops. The tops shall be left intact where they fall, with the branches remaining upright. In addition, trees less than nine inches (<9") are to be cut and left. This is because of the research nature of this project.

3 - Payments

3.4 - Damaged Timber

3.4.1 - Damaged timber (6/14)

General Condition and Requirement 3.4 Damaged Timber, defines liquidated damages for undesignated live merchantable trees which are cut or injured.

No damage is acceptable to merchantable trees. Within the sale area, if more than 5% of trees (> than 4.5" DBH) within a specified area of the sale are damaged, liquidated damages will be assessed for all trees damaged. Rates will be in accordance with General Condition and Requirement 3.4 Damaged Timber, or at a rate of \$50 dollars per sawtimber tree and \$5 dollars per pole sized tree, whichever is greater.

4 - Transportation

4.1 - Construction

4.1.7 - Road closure (10/11)

All new roads built into the sale must be blocked to vehicle traffic upon completion of the sale. Overgrown roads that are reopened shall be considered new roads. In general, this will require constructing a four (4') foot high berm of stumps and logs covered with earth. Stumps and brush must be placed along the remainder of the trail. These roads must be rendered impassable to cars and trucks. Temporary berms may be required if no sale activity occurs for 30 or more consecutive days. Contact the sale administrator for specific details of design and placement.

4.2 - Maintenance

4.2.4 - Grading (10/16)

For completion of the sale, state forest roads must be graded. In general, this will require a road grader or bull dozer to shape up the roads after forest products have been hauled off site. This includes cleaning of drainage areas, grading, crowning and filling with gravel, if necessary. The grading equipment to be used must be approved by the Unit Manager or his/her representative.

5 - Operations

5.1 - Notification

5.1.1 - Pre-sale conference (10/16)

A pre-sale conference on site between the Purchaser and sale administrator is required prior to beginning any operations. The Unit Manager or his/her representative must be contacted at least 5 days in advance to schedule the conference.

5.2 - Conduct of Operations

5.2.3 - Operating Restrictions

5.2.3.1 - Operating restrictions (9/11)

Within Payment Unit(s) 1, unless changed by written agreement, cutting and skidding is limited to the period of December 1st, 2017 to March 15th, 2018. Payments must be completed and operations must begin no later than February 1st, 2018. This restriction is due to the necessity of assuring that all operations are on schedule for timely completion of the research project.

5.4 - Soil Protection

5.4.1 - Rutting restriction, general (7/16)

Operations are to cease immediately if equipment and weather conditions result in rutting of roads and/or skid trails which is 12 inches or greater in depth and 50 feet in length. The Unit Manager or his/her representative may restrict hauling and/or skidding if ruts exceed the specified depth. With the Unit Manager or his/her representative's approval, the Purchaser may return to the area when the risk of rutting has decreased.

7 - Other Conditions

7.2 - Extensions

7.2.2 - No extensions (3/09)

There will be no extensions granted on this contract.

7.2.7 - Research extension (12/16)

This is a research sale with a short contract length. The sale must be harvested promptly. One (1), twelve (12) month extension can be applied to one (1) other State Forest Timber Sale Contract owned by the purchaser or owned by one (1) designated sub-contractor of the Purchaser that works this contract. To qualify, the contract expiration date of the contract to be extended must be within twelve (12) months from the issue date of this contract. If this is the first extension on the other State Forest Timber Sale Contract, then the 5% extension fee will be waived. If this is an additional extension, the 10% fee will be reduced to 5%. The salvage extension must be used before this contract is closed-out. This specification does not alleviate the purchaser from any contractual obligations of the extended State Forest Timber Sale Contract. Per General Condition & Requirement 7.2, extensions are at the sole discretion of the DNR.



TIMBER SALE MAP

This information provided by authority of Par 525, 1994 PA 451, as amended.

Sale Number	Year
33 - 004	17

Forest Management Unit Escanaba	County Delta	Mapped By Jacob Siler	Date 05/05/2017	Page 1	of 1
Township 43N	Range 22W	Section(s) and Subdivision(s) W1/2 NW1/4, S15	Scale 1:15,840		

Cover Type

A = Aspen	H = Hemlock	N = Marsh	U = Upland Brush
B = Paper Birch	J = Jack Pine	O = Oak	UM = Upland Mixed
C = Cedar	L = Lowland Brush	P = Lowland Poplar	V = Bog or Marsh
D = Tread Bog	LM = Lowland Mixed	Q = Mixed Swamp Conifer	W = White Pine
E = Swamp Hdwoods	M = Mpl, Bch, Bich	R = Red Pine	X = Non Stocked
F = Spruce Fir	MC = Mixed Conifer	S = Black Spruce	Z = Water
G = Grass	MD = Mixed Deciduous	T = Tamarack	

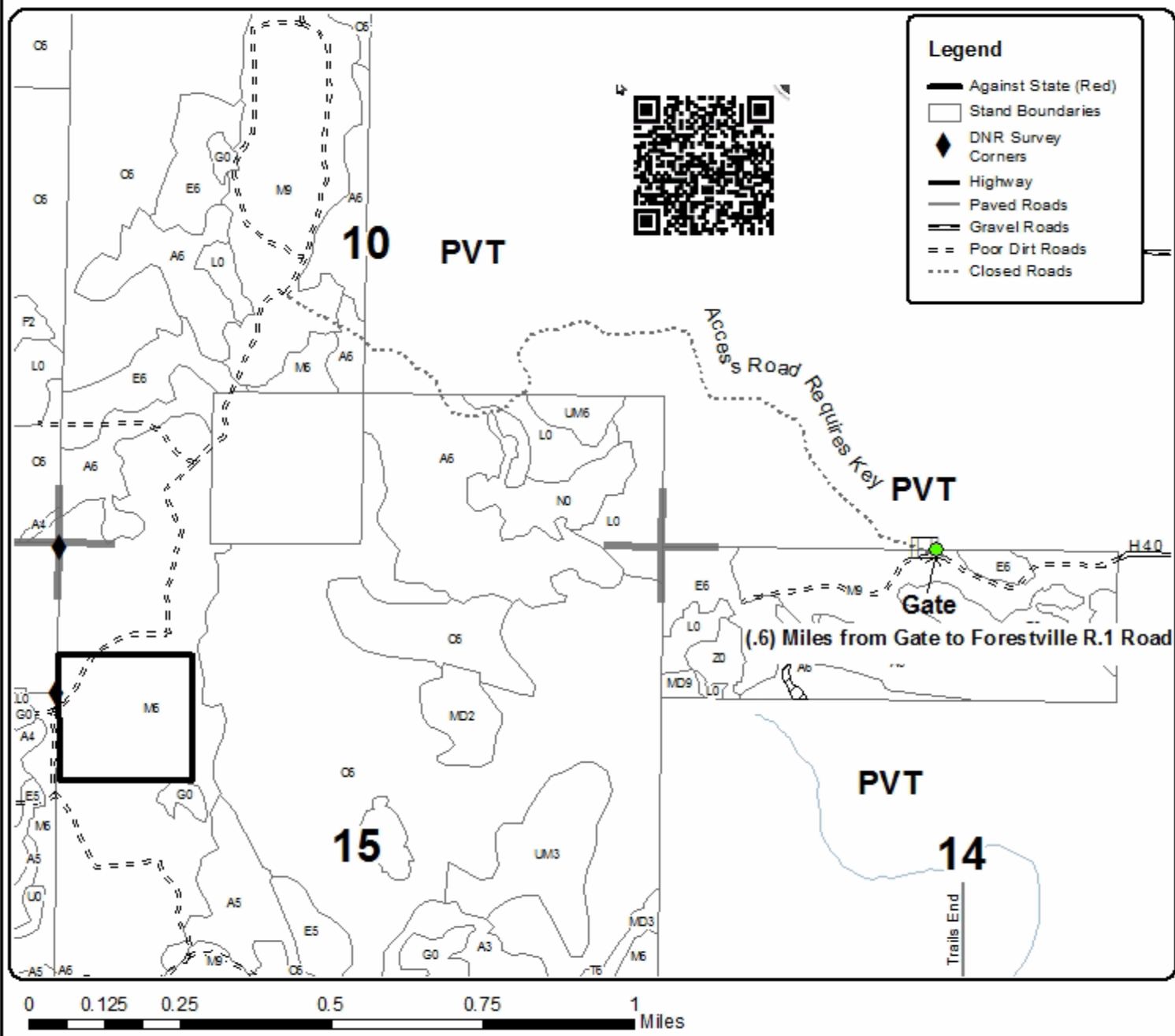
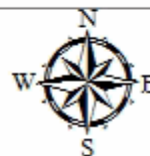
Density

0 = Non Stocked	5 = Pole Timber Medium
1 = Seeding Sapling Poor	6 = Pole Timber Well
2 = Seeding Sapling Medium	7 = Saw Timber Poor
3 = Seeding Sapling Well	8 = Saw Timber Medium
4 = Pole Timber Poor	9 = Saw Timber Well

PU Acres
1 30

Past The Gate MWR

Compartment 93
30 Acres



TIMBER SALE INFORMATION

DETEMPLE MWR (33-026-17)

Menominee County (Advertised Price \$14,053.60)

SALE NOTE: This sale has a very short contract length, to facilitate a research project. The sale must be cut and skid between August 15, 2017 and March 15, 2018. No extensions will be given. A free extension may be applied towards one other State Forest Timber Sale Contract, see specification 7.2.7 for details.

A timber sale contract for this lump sum, sealed bid timber sale will be awarded to the responsible bidder offering the highest sealed bid price. Bids must be at or above the following advertised price for each species:

<u>PRODUCTS & SPECIES</u>	<u>ESTIMATED UNITS*</u>	<u>ADVERTISED PRICE</u>
Sawtimber		
Basswood	10.30 MBF	\$ 128.00 / MBF
Sugar Maple	3.20 MBF	\$ 316.00 / MBF
White Ash	6.30 MBF	\$ 60.00 / MBF
Pulpwood		
Mixed Hardwood	398.00 Cords	\$ 27.60 / Cord
Quaking Aspen	14.00 Cords	\$ 25.80 / Cord

* The total volume is statistically estimated within plus (+) or minus (-) 31.77 percent. The estimated units are final and not subject to adjustment. Prospective bidders are urged to examine this timber and to make their own estimates of quantity and quality.

BOND AND PAYMENT SCHEDULE:

1. A bond in the amount of \$703.00 to insure faithful performance of the conditions of the contract will be deposited by the successful bidder within 21 days of the sale award.
2. Cutting in any sale or unit without the required advance payment would be considered a trespass.
3. Total payment must be paid in advance or according to the following schedule:
 - (a) Ten percent (10%) of the sale value must be paid within 21 days of the sale award.
 - (b) The remainder is due before cutting begins.
4. If no cutting takes place, the 10% down payment will not be refunded.
5. Operations on the contract issued will terminate on 06/30/2018.

Description of Timber by Payment Unit (PU)

PU	MARKET GROUP	PRODUCT	QUANTITY	UNIT	ACRES	ADVERTISE PRICE
1	Basswood	Sawtimber	10.3	MBF	28.5	\$14,053.60
	Sugar Maple		3.2	MBF		
	White Ash		6.3	MBF		
	Mixed Hardwood	Pulpwood	398.0	Cords		
	<i>Basswood</i>		176.0	<i>Cords</i>		
	<i>Beech</i>		3.0	<i>Cords</i>		
	<i>Ironwood</i>		13.0	<i>Cords</i>		
	<i>Sugar Maple</i>		76.0	<i>Cords</i>		
	<i>White Ash</i>		130.0	<i>Cords</i>		
	Quaking Aspen		14.0	Cords		
TOTAL:			19.8	MBF		
TOTAL:			412.0	Cords		

Sale Specific Conditions & Requirements

Sale Name: DETEMPLE MWR

Sale Number: 33-026-17 Seq#: 1

1 - Sale Area

1.2 - Boundaries

1.2.1 - Painted boundaries (1/14)

The sale boundary and Payment Unit boundaries are marked and identified by red and yellow paint. Exterior sale boundary lines against state are marked with red paint. Interior sale boundaries are marked with yellow paint, designating patch cuts. The painted boundary line trees are not Included Timber and are to be protected unless marked with orange paint.

2 - Timber Specifications

2.1 - Included Timber

2.1.3 - Cut tree marked unit(s) (12/08)

Within Payment Unit(s) 1, all trees are designated for cutting when marked with orange paint above and below stump height, regardless of merchantability. ALSO, within Payment Unit 1, cut all trees that are two (2) inches or more at DBH within designated patch-cut areas (bounded by yellow paint). Yellow painted boundary trees are not to be harvested. The total area of the patch cuts is 1.95 acres with each patch being 0.15 acres in size. Thirteen patch cut areas are located within the 30 acre treatment area.

2.2 - Utilization

2.2.3 - Stump heights (4/07)

Stump heights within Payment Unit(s) 1, shall not exceed 12 inches for trees greater than 10 inches DBH and 4 inches for trees smaller than 10 inches DBH.

2.2.8 - Utilization and removal (5/14)

Payment Unit 1 is part of a research project. As part of the research, the slash must be removed from the 13 patch-cut areas, and then dispersed into the remainder of the sale area.

Slash removal must be completed by March 15th, 2018. If the deadline is not met, damages will be collected at a rate determined by the cost for the Department to hire a contractor to complete this specification.

The requirement to retain approximately 1/6 to 1/3 of tree tops and limbs less than four inches in diameter does not apply (G. C. & R. 2.2.).

This is because of the research nature of this project.

3 - Payments

3.3 - Pre-measured Sales

3.3.4 - Dividing payment units (7/14)

Payment Unit(s) \$18,000 in value or greater may be divided at the request of the Purchaser and upon approval of the Unit Manager. Dividing Payment Units is a contract modification which requires a Timber Sale Contract Supplement. There will be only one division per Payment Unit.

3.4 - Damaged Timber

3.4.1 - Damaged timber (6/14)

General Condition and Requirement 3.4 Damaged Timber, defines liquidated damages for undesignated live merchantable trees which are cut or injured. No damage is acceptable to residual merchantable trees. Within the sale area, if more than 5% of trees (> 4.5" DBH) within a specified area of the sale are damaged, liquidated damages will be assessed for all trees damaged. Rates will be in accordance with General Condition and Requirement 3.4 Damaged Timber, or at a rate of \$50 per sawtimber tree and \$5 per pole sized tree, whichever is greater.

4 - Transportation

4.2 - Maintenance

4.2.4 - Grading (10/16)

For completion of the sale, state forest roads must be graded. In general, this will require a road grader or bull dozer to shape up the roads after forest products have been hauled off site. This includes cleaning of drainage areas, grading, crowning and filling with gravel, if necessary. The grading equipment to be used must be approved by the Unit Manager or his/her representative.

5 - Operations

5.2 - Conduct of Operations

5.2.3 - Operating Restrictions

5.2.3.1 - Operating restrictions (9/11)

Within Payment Unit(s) 1, cutting and skidding is limited to the period from August 15th, 2017 to March 15th, 2018.

Payments must be completed and operations must begin no later than February 1st 2018. This restriction is due to the necessity of assuring that all operations are on schedule for timely completion of the research project.

5.4 - Soil Protection

5.4.1 - Rutting restriction, general (7/16)

Operations are to cease immediately if equipment and weather conditions result in rutting of roads and/or skid trails which is 12 inches or greater in depth and 50 feet in length. The Unit Manager or his/her representative may restrict hauling and/or skidding if ruts exceed the specified depth. With the Unit Manager or his/her representative's approval, the Purchaser may return to the area when the risk of rutting has decreased.

6 - Safety and Fire Prevention

6.2 - Signing

6.2.1 - Road posting (9/09)

The Purchaser is responsible for posting and maintaining caution signs on the West Branch of the DeTemple Road prior to beginning operations. The road must be posted at appropriate distances from the sale area to warn of logging activity and truck traffic. Signs must be removed when harvest operations are suspended or completed. The Purchaser will provide these signs.

7 - Other Conditions

7.2 - Extensions

7.2.2 - No extensions (3/09)

There will be no extensions granted on this contract.

7.2.7 - Research extension (12/16)

This is a research sale with a short contract length. The sale must be harvested promptly. One (1), twelve (12) month extension can be applied to one (1) other State Forest Timber Sale Contract owned by the purchaser or owned by one (1) designated sub-contractor of the Purchaser that works this contract. To qualify, the contract expiration date of the contract to be extended must be within twelve (12) months from the issue date of this contract. If this is the first extension on the other State Forest Timber Sale Contract, then the 5% extension fee will be waived. If this is an additional extension, the 10% fee will be reduced to 5%. The salvage extension must be used before this contract is closed-out. This specification does not alleviate the purchaser from any contractual obligations of the extended State Forest Timber Sale Contract. Per General Condition & Requirement 7.2, extensions are at the sole discretion of the DNR.



TIMBER SALE MAP

This information provided by authority of Part 525, 1994 PA 451, as amended.

Forest Management Unit Escanaba Management Unit		County Menominee County	Mapped By Beaudo	Date 5/15/2017	Page 1	of 1
Township 37N	Range 27W	Section(s) and Subdivision(s) Section 7 - SWNE & NWSE.		Scale 1:15,840		

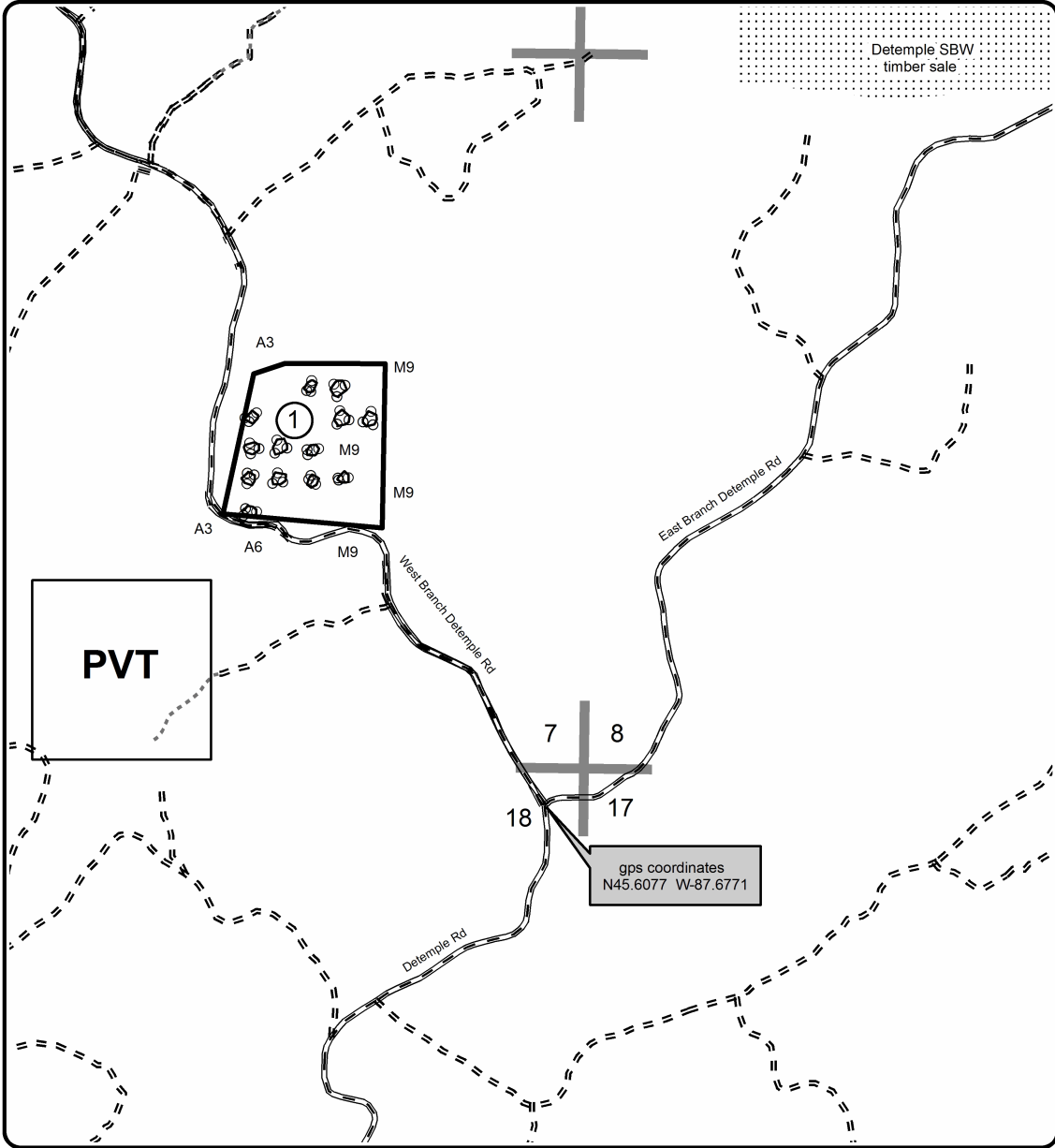
Cover Type				Density	
A = Aspen	H = Hemlock	N = Marsh	U = Upland Brush	0 = Non Stocked	5 = Pole Timber Medium
B = Paper Birch	J = Jack Pine	O = Oak	UM = Upland Mixed	1 = Seedling Sapling Poor	6 = Pole Timber Well
C = Cedar	L = Lowland Brush	P = Lowland Poplar	V = Bog or Marsh	2 = Seedling Sapling Medium	7 = Saw Timber Poor
D = Treed Bog	LM = Lowland Mixed	Q = Mixed Swamp Conifer	W = White Pine	3 = Seedling Sapling Well	8 = Saw Timber Medium
E = Swamp Hdwoods	M = Mpl, Bch, Brch	R = Red Pine	X = Non Stocked	4 = Pole Timber Poor	9 = Saw Timber Well
F = Spruce Fir	MC = Mixed Conifer	S = Black Spruce	Z = Water		
G = Grass	MD = Mixed Deciduous	T = Tamarack			

PU	Acres
1	28.5



Detemple MWR
Compartment 2
28.5 Acres

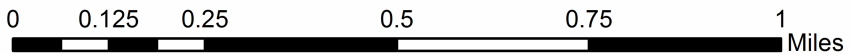
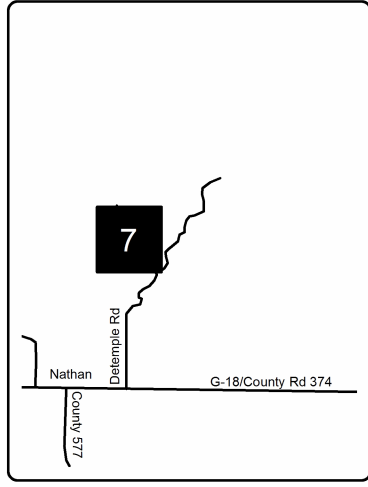
QR Code opens map in PDF Maps App



Legend

- Against State (Red)
- Patch-cut areas (Yellow)
- Section Corners
- 7 Section Number
- Gravel Road
- - - Poor Dirt Road
- ① Payment Unit
- PVT Private Property

Locator Map
1:200,000



TIMBER SALE INFORMATION

DETEMPLE SBW (33-027-17)

Menominee County (Advertised Price \$17,185.40)

SALE NOTE: The spruce budworm is present within the sale and has caused some defoliation, but no mortality has occurred yet. The Purchaser should harvest this sale as soon as possible.

A timber sale contract for this lump sum, sealed bid timber sale will be awarded to the responsible bidder offering the highest sealed bid price. Bids must be at or above the following advertised price for each species:

<u>PRODUCTS & SPECIES</u>	<u>ESTIMATED UNITS*</u>	<u>ADVERTISED PRICE</u>
Pulpwood		
Balsam Fir	128.00 Cords	\$ 22.35 / Cord
Mixed Hardwood	199.00 Cords	\$ 29.90 / Cord
N. White Cedar	33.00 Cords	\$ 26.65 / Cord
Quaking Aspen	177.00 Cords	\$ 27.95 / Cord
White Spruce	114.00 Cords	\$ 22.35 / Cord

* The total volume is statistically estimated within plus (+) or minus (-) 23.76 percent. The estimated units are final and not subject to adjustment. Prospective bidders are urged to examine this timber and to make their own estimates of quantity and quality.

BOND AND PAYMENT SCHEDULE:

1. A bond in the amount of \$859.00 to insure faithful performance of the conditions of the contract will be deposited by the successful bidder within 21 days of the sale award.
2. Cutting in any sale or unit without the required advance payment would be considered a trespass.
3. Total payment must be paid in advance or according to the following schedule:
 - (a) Ten percent (10%) of the sale value must be paid within 21 days of the sale award.
 - (b) The 10% down payment will be credited towards the first unit cut.
4. If no cutting takes place, the 10% down payment will not be refunded.
5. Operations on the contract issued will terminate on 09/30/2019.

Description of Timber by Payment Unit (PU)

PU	MARKET GROUP	PRODUCT	QUANTITY	UNIT	ACRES	ADVERTISE PRICE
1	Balsam Fir	Pulpwood	76.0	Cords	16.6	\$9,965.45
	Mixed Hardwood		83.0	Cords		
	<i>American Elm</i>		1.0	<i>Cords</i>		
	<i>Balsam Poplar</i>		13.0	<i>Cords</i>		
	<i>Basswood</i>		23.0	<i>Cords</i>		
	<i>Black Ash</i>		18.0	<i>Cords</i>		
	<i>Black Cherry</i>		3.0	<i>Cords</i>		
	<i>Paper Birch</i>		2.0	<i>Cords</i>		
	<i>Red Maple</i>		23.0	<i>Cords</i>		
	N. White Cedar		30.0	Cords		
	Quaking Aspen		128.0	Cords		
	White Spruce		63.0	Cords		
	2		Balsam Fir	Pulpwood		
Mixed Hardwood		116.0	Cords			
<i>American Elm</i>		3.0	<i>Cords</i>			
<i>Balsam Poplar</i>		3.0	<i>Cords</i>			
<i>Black Ash</i>		51.0	<i>Cords</i>			
<i>Black Cherry</i>		4.0	<i>Cords</i>			
<i>Paper Birch</i>		3.0	<i>Cords</i>			
<i>Red Maple</i>		42.0	<i>Cords</i>			
<i>White Oak</i>		5.0	<i>Cords</i>			
<i>Yellow Birch</i>		5.0	<i>Cords</i>			
N. White Cedar		3.0	Cords			
Quaking Aspen		49.0	Cords			
White Spruce		51.0	Cords			
TOTAL:			651.0	Cords		

Sale Specific Conditions & Requirements

Sale Name: DETEMPLE SBW

Sale Number: 33-027-17 Seq#: 1

1 - Sale Area

1.2 - Boundaries

1.2.1 - Painted boundaries (1/14)

The sale boundary and Payment Unit boundaries are marked and identified by blue, red, and yellow paint. Exterior sale boundary lines against private property are marked with blue paint. Exterior sale boundary lines against state are marked with red paint. Interior Payment Unit boundaries are marked with yellow paint. The painted boundary line trees are not Included Timber and are to be protected. Yellow painted trees designating an interior Payment Unit boundary are only to be cut when all surrounding Payment Units have been paid for.

2 - Timber Specifications

2.1 - Included Timber

2.1.1 - Clearcut unit(s) with unmerchantable trees (6/14)

Within Payment Unit(s) 1 and 2, cut all trees that are three (3) inches or more at DBH.

3 - Payments

3.3 - Pre-measured Sales

3.3.4 - Dividing payment units (7/14)

Payment Unit(s) \$18,000 in value or greater may be divided at the request of the Purchaser and upon approval of the Unit Manager. Dividing Payment Units is a contract modification which requires a Timber Sale Contract Supplement. There will be only one division per Payment Unit.

4 - Transportation

4.2 - Maintenance

4.2.1 - Hauling restriction (12/08)

Hauling may be restricted on forest roads by the Unit Manager or his/her representative. The restriction may occur during spring breakup or during other wet weather conditions.

4.2.4 - Grading (10/16)

For completion of the sale, state forest roads must be graded. In general, this will require a road grader or bull dozer to shape up the roads after forest products have been hauled off site. This includes cleaning of drainage areas, grading, crowning and filling with gravel, if necessary. The grading equipment to be used must be approved by the Unit Manager or his/her representative.

5 - Operations

5.2 - Conduct of Operations

5.2.3 - Operating Restrictions

5.2.3.1 - Operating restrictions (9/11)

Within Payment Unit(s) 2, cutting and skidding are limited to the period of December 1st to March 31st, unless there is an extended dry or frozen period and the sale administrator approves of harvesting during that time period. This restriction is because of some low wet ground within the Payment Unit.

5.4 - Soil Protection

5.4.1 - Rutting restriction, general (7/16)

Operations are to cease immediately if equipment and weather conditions result in rutting of roads and/or skid trails which is 12 inches or greater in depth and 50 feet in length. The Unit Manager or his/her representative may restrict hauling and/or skidding if ruts exceed the specified depth. With the Unit Manager or his/her representative's approval, the Purchaser may

return to the area when the risk of rutting has decreased.

6 - Safety and Fire Prevention

6.2 - Signing

6.2.1 - Road posting (9/09)

The Purchaser is responsible for posting and maintaining caution signs on the DeTemple Road prior to beginning operations. The road must be posted at appropriate distances from the sale area to warn of logging activity and truck traffic. Signs must be removed when harvest operations are suspended or completed. The Purchaser will provide these signs.

7 - Other Conditions

7.5 - Loss

7.5.1 - Deteriorating timber (7/09)

The sale area has received damage from the spruce budworm. The Purchaser should harvest the wood as soon as possible. The Department of Natural Resources is held free of responsibility of any further damage or deterioration due to delay in harvesting.



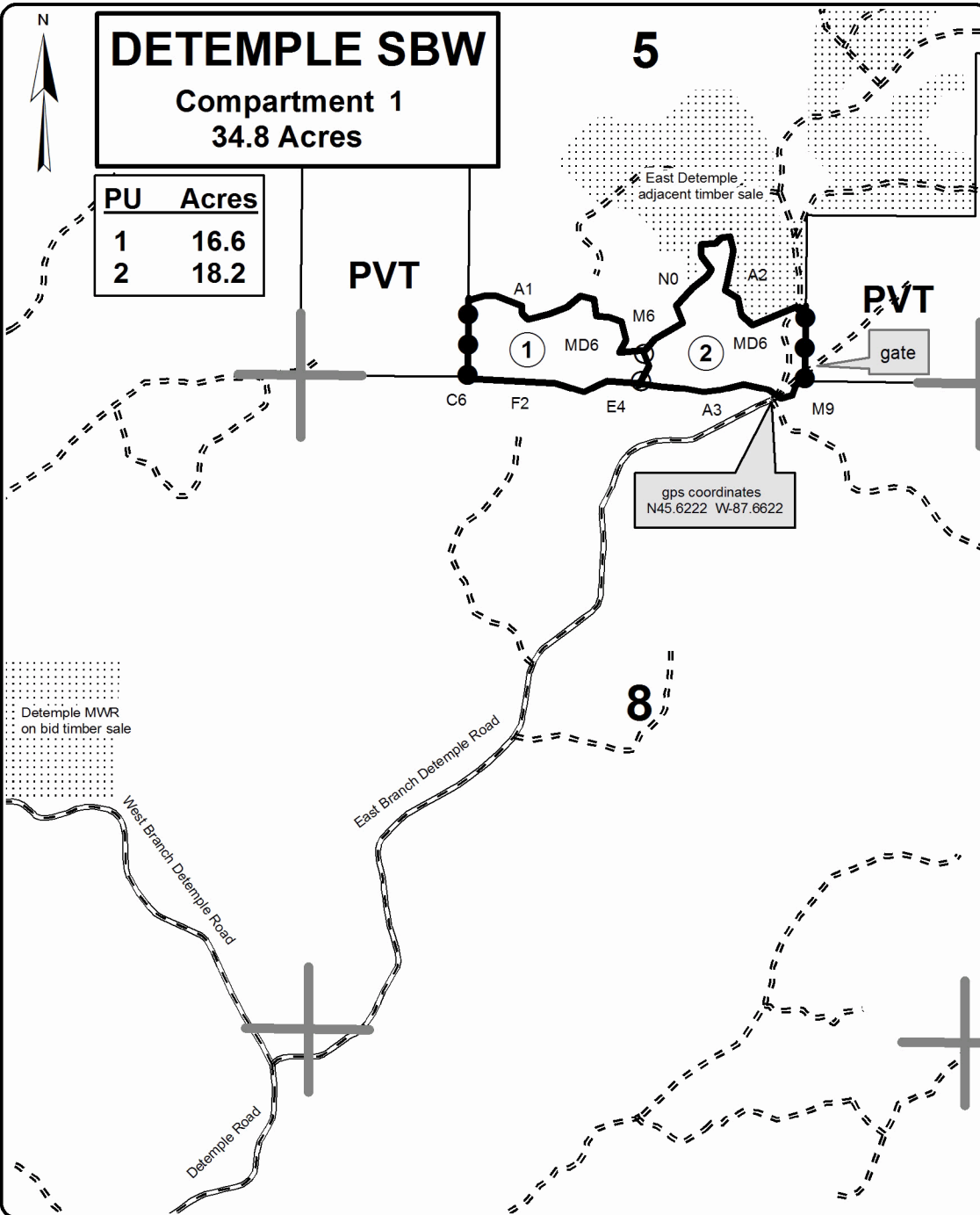
TIMBER SALE MAP

This information provided by authority of Part 525, 1994 PA 451, as amended.

Sale Number	Year
33-027	17

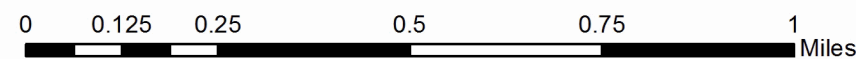
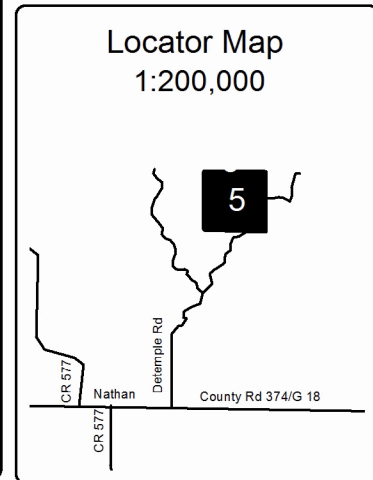
Forest Management Unit Escanaba Management Unit		County Menominee County	Mapped By Beaudo	Date 5/2/2017	Page 1	of 1
Township 37N	Range 27W	Section(s) and Subdivision(s) Sec 5 : SESW & SWSE; Sec 8 : NENW, NWNE & NWNW		Scale 1:15,840		

Cover Type				Density			
A = Aspen	H = Hemlock	N = Marsh	U = Upland Brush	0 = Non Stocked	5 = Pole Timber Medium		
B = Paper Birch	J = Jack Pine	O = Oak	UM = Upland Mixed	1 = Seedling Sapling Poor	6 = Pole Timber Well		
C = Cedar	L = Lowland Brush	P = Lowland Poplar	V = Bog or Marsh	2 = Seedling Sapling Medium	7 = Saw Timber Poor		
D = Tread Bog	LM = Lowland Mixed	Q = Mixed Swamp Conifer	W = White Pine	3 = Seedling Sapling Well	8 = Saw Timber Medium		
E = Swamp Hdwoods	M = Mpl, Bch, Brch	R = Red Pine	X = Non Stocked	4 = Pole Timber Poor	9 = Saw Timber Well		
F = Spruce Fir	MC = Mixed Conifer	S = Black Spruce	Z = Water				
G = Grass	MD = Mixed Deciduous	T = Tamarack					



QR Code opens map in PDF Maps App

Legend	
	Against State (Red)
	Payment Unit (Yellow)
	Private Line (Blue)
	State Land Boundary
	Section Corners
	Highway
	Paved Roads
	Gravel Roads
	Poor Dirt Roads
	Closed Roads
	Section Number
	Payment Unit
	Private Property
	State Timber Sale



TIMBER SALE INFORMATION

County Line MWR (33-028-17)

Menominee County (Advertised Price \$43,907.75)

SALE NOTE: In Payment Units 1 and 2, all slash less than nine inches (<9") top diameter outside bark at the small end may not be removed from the sale area. In addition, trees less than nine inches (<9") must be cut and left (See spec 2.2.8).

This sale has a very short contract length, to facilitate a research project. The sale must be cut and skid between August 15, 2017 and March 15, 2018. No extensions will be given. A free extension may be applied towards one other State Forest Timber Sale Contract, see specification 7.2.7 for details.

A timber sale contract for this lump sum, sealed bid timber sale will be awarded to the responsible bidder offering the highest sealed bid price. Bids must be at or above the following advertised price for each species:

<u>PRODUCTS & SPECIES</u>	<u>ESTIMATED UNITS*</u>	<u>ADVERTISED PRICE</u>
Sawtimber		
Basswood	28.20 MBF	\$ 128.00 / MBF
Beech	16.90 MBF	\$ 67.00 / MBF
Red Maple	7.10 MBF	\$ 194.00 / MBF
Sugar Maple	78.20 MBF	\$ 316.00 / MBF
White Ash	28.00 MBF	\$ 60.00 / MBF
Yellow Birch	5.50 MBF	\$ 95.00 / MBF
Pulpwood		
Balsam Fir	6.00 Cords	\$ 20.65 / Cord
Hemlock	29.00 Cords	\$ 9.25 / Cord
Mixed Hardwood	370.00 Cords	\$ 27.60 / Cord
N. White Cedar	11.00 Cords	\$ 24.60 / Cord

* The total volume is statistically estimated within plus (+) or minus (-) 12.34 percent. The estimated units are final and not subject to adjustment. Prospective bidders are urged to examine this timber and to make their own estimates of quantity and quality.

BOND AND PAYMENT SCHEDULE:

1. A bond in the amount of \$2,195.00 to insure faithful performance of the conditions of the contract will be deposited by the successful bidder within 21 days of the sale award.
2. Cutting in any sale or unit without the required advance payment would be considered a trespass.
3. Total payment must be paid in advance or according to the following schedule:
 - (a) Ten percent (10%) of the sale value must be paid within 21 days of the sale award.
 - (b) The 10% down payment will be credited towards the first unit cut.
4. If no cutting takes place, the 10% down payment will not be refunded.
5. Operations on the contract issued will terminate on 06/30/2018.

Description of Timber by Payment Unit (PU)

PU	MARKET GROUP	PRODUCT	QUANTITY	UNIT	ACRES	ADVERTISE PRICE	
1	Basswood	Sawtimber	12.7	MBF	16.0	\$17,877.15	
	Beech		5.8	MBF			
	Sugar Maple		30.8	MBF			
	White Ash		13.4	MBF			
	Yellow Birch		0.5	MBF			
	Balsam Fir		Pulpwood	3.0			Cords
	Hemlock			6.0			Cords
	Mixed Hardwood			187.0			Cords
	<i>Basswood</i>			32.0			<i>Cords</i>
	<i>Beech</i>		33.0	<i>Cords</i>			
	<i>Sugar Maple</i>	83.0	<i>Cords</i>				
	<i>White Ash</i>	34.0	<i>Cords</i>				
	<i>Yellow Birch</i>	5.0	<i>Cords</i>				
	2	Basswood	Sawtimber	15.5	MBF	15.7	\$26,030.60
Beech		11.1		MBF			
Red Maple		7.1		MBF			
Sugar Maple		47.4		MBF			
White Ash		14.6		MBF			
Yellow Birch		5.0		MBF			
Balsam Fir		Pulpwood		3.0	Cords		
Hemlock				23.0	Cords		
Mixed Hardwood				183.0	Cords		
<i>Balsam Poplar</i>				4.0	<i>Cords</i>		
<i>Basswood</i>			30.0	<i>Cords</i>			
<i>Beech</i>			40.0	<i>Cords</i>			
<i>Black Ash</i>			6.0	<i>Cords</i>			
<i>Red Maple</i>			19.0	<i>Cords</i>			
<i>Sugar Maple</i>			55.0	<i>Cords</i>			
<i>White Ash</i>		17.0	<i>Cords</i>				
<i>Yellow Birch</i>		12.0	<i>Cords</i>				
N. White Cedar		11.0	Cords				
TOTAL:			163.9	MBF			
TOTAL:			416.0	Cords			

Sale Specific Conditions & Requirements

Sale Name: County Line MWR

Sale Number: 33-028-17 Seq#: 1

1 - Sale Area

1.2 - Boundaries

1.2.1 - Painted boundaries (1/14)

The sale boundary and Payment Unit boundaries are marked and identified by red and yellow paint. Exterior sale boundary lines against state are marked with red paint. Interior Payment Unit boundaries are marked with yellow paint. The painted boundary line trees are not Included Timber and are to be protected. Yellow painted trees designating an interior Payment Unit boundary are only to be cut when all surrounding Payment Units have been paid for and they are not marked with orange paint.

2 - Timber Specifications

2.1 - Included Timber

2.1.7 - Leave tree marked unit(s) (6/14)

Within Payment Unit(s) 1 and 2, cut all trees that are two (2) inches or more at DBH; except trees marked with orange paint above and below stump height.

2.2 - Utilization

2.2.8 - Utilization and removal (5/14)

In Payment Units 1 and 2, all slash less than nine inches (<9") top diameter outside bark at the small end may not be removed from the sale area, e.g. tops and whole trees. Tops are to be left intact where they fall with branches remaining upright. Trees less than nine inches (<9") must be cut and left. This is because of the research nature of this project.

3 - Payments

3.3 - Pre-measured Sales

3.3.4 - Dividing payment units (7/14)

Payment Unit(s) \$18,000 in value or greater may be divided at the request of the Purchaser and upon approval of the Unit Manager. Dividing Payment Units is a contract modification which requires a Timber Sale Contract Supplement. There will be only one division per Payment Unit.

3.4 - Damaged Timber

3.4.1 - Damaged timber (6/14)

General Condition and Requirement 3.4 Damaged Timber, defines liquidated damages for undesignated live merchantable trees which are cut or injured. No damage is acceptable to residual merchantable trees. Within the sale area, if more than 5% of trees (> 4.5" DBH) within a specified area of the sale are damaged, liquidated damages will be assessed for all trees damaged. Rates will be in accordance with General Condition and Requirement 3.4 Damaged Timber, or at a rate of \$50 per sawtimber tree and \$5 per pole sized tree, whichever is greater.

4 - Transportation

4.1 - Construction

4.1.7 - Road closure (10/11)

All new roads built into the sale must be blocked to vehicle traffic upon completion of the sale. Overgrown roads that are reopened shall be considered new roads. In general, this will require constructing a four (4') foot high berm of stumps and logs covered with earth. Stumps and brush must be placed along the remainder of the trail. These roads must be rendered impassable to cars and trucks. Contact the sale administrator for specific details of design and placement.

4.2 - Maintenance

4.2.4 - Grading (10/16)

For completion of the sale, state forest roads must be graded. In general, this will require a road grader or bull dozer to shape

up the roads after forest products have been hauled off site. This includes cleaning of drainage areas, grading, crowning and filling with gravel, if necessary. The grading equipment to be used must be approved by the Unit Manager or his/her representative.

5 - Operations

5.2 - Conduct of Operations

5.2.3 - Operating Restrictions

5.2.3.1 - Operating restrictions (9/11)

Within Payment Unit(s) 1 and 2, unless changed by written agreement, cutting and skidding is limited to the period of December 1st 2017 to March 15th 2018. Payments must be completed and operations must begin no later than February 1st 2018. This restriction is due to the necessity of assuring that all operations are on schedule for timely completion of the research project.

5.4 - Soil Protection

5.4.1 - Rutting restriction, general (7/16)

Operations are to cease immediately if equipment and weather conditions result in rutting of roads and/or skid trails which is 12 inches or greater in depth and 50 feet in length. The Unit Manager or his/her representative may restrict hauling and/or skidding if ruts exceed the specified depth. With the Unit Manager or his/her representative's approval, the Purchaser may return to the area when the risk of rutting has decreased.

6 - Safety and Fire Prevention

6.2 - Signing

6.2.1 - Road posting (9/09)

The Purchaser is responsible for posting and maintaining caution signs on the County Line Road prior to beginning operations. The road must be posted at appropriate distances from the sale area to warn of logging activity and truck traffic. Signs must be removed when harvest operations are suspended or completed. The Purchaser will provide these signs.

7 - Other Conditions

7.2 - Extensions

7.2.2 - No extensions (3/09)

There will be no extensions granted on this contract.

7.2.7 - Research extension (12/16)

This is a research sale with a short contract length. The sale must be harvested promptly. One (1), twelve (12) month extension can be applied to one (1) other State Forest Timber Sale Contract owned by the purchaser or owned by one (1) designated sub-contractor of the Purchaser that works this contract. To qualify, the contract expiration date of the contract to be extended must be within twelve (12) months from the issue date of this contract. If this is the first extension on the other State Forest Timber Sale Contract, then the 5% extension fee will be waived. If this is an additional extension, the 10% fee will be reduced to 5%. The salvage extension must be used before this contract is closed-out. This specification does not alleviate the purchaser from any contractual obligations of the extended State Forest Timber Sale Contract. Per General Condition & Requirement 7.2, extensions are at the sole discretion of the DNR.



TIMBER SALE MAP

This information provided by authority of Part 525, 1994 PA 451, as amended.

Sale Number	Year
33-028	17

Forest Management Unit Escanaba Management Unit	County Menominee County	Mapped By Bealdo	Date 5/9/2017	Page 1	of 1
Township 37N	Range 25W	Section(s) and Subdivision(s) Section 1 : NESE & SESE	Scale 1:15,840		

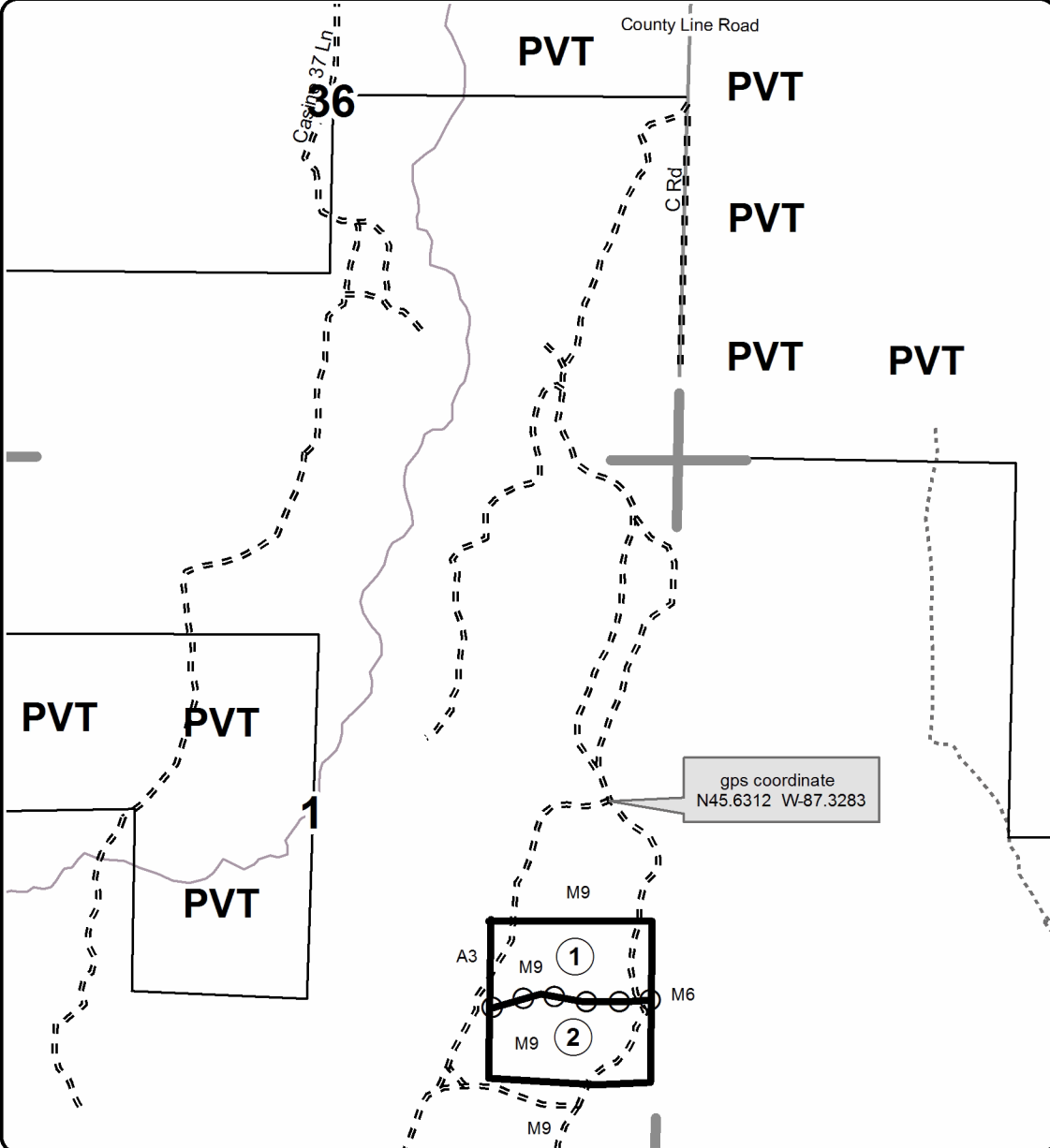
Cover Type				Density	
A = Aspen	H = Hemlock	N = Marsh	U = Upland Brush	0 = Non Stocked	5 = Pole Timber Medium
B = Paper Birch	J = Jack Pine	O = Oak	UM = Upland Mixed	1 = Seedling Sapling Poor	6 = Pole Timber Well
C = Cedar	L = Lowland Brush	P = Lowland Poplar	V = Bog or Marsh	2 = Seedling Sapling Medium	7 = Saw Timber Poor
D = Treed Bog	LM = Lowland Mixed	Q = Mixed Swamp Conifer	W = White Pine	3 = Seedling Sapling Well	8 = Saw Timber Medium
E = Swamp Hdwoods	M = Mpl, Bch, Brch	R = Red Pine	X = Non Stocked	4 = Pole Timber Poor	9 = Saw Timber Well
F = Spruce Fir	MC = Mixed Conifer	S = Black Spruce	Z = Water		
G = Grass	MD = Mixed Deciduous	T = Tamarack			

PU	Acres
1	16.0
2	15.7



County Line MWR
 Compartment 32
 31.7 Acres

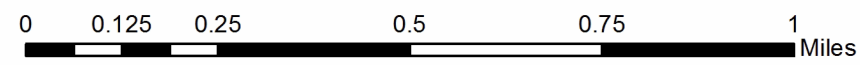
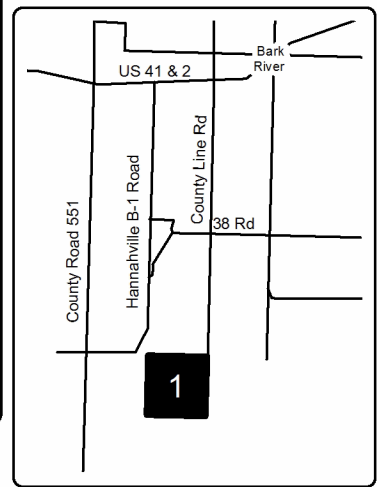
QR Code opens map
 in PDF Maps App



Legend

- Against State (Red)
- ⊙ Payment Unit (Yellow)
- Section Corners
- Highway
- Paved Roads
- Gravel Roads
- == Poor Dirt Roads
- Closed Roads
- 1 Section Number
- ⊙ Payment Unit
- PVT Private Property
- State Land Boundary

Locator Map
 1:200,000



TIMBER SALE INFORMATION

WESTMAN MWR (33-029-17)

Menominee County (Advertised Price \$13,312.25)

SALE NOTE: This sale has a very short contract length, to facilitate a research project. The sale must be cut and skid between August 15, 2017 and March 15, 2018. No extensions will be given. A free extension may be applied towards one other State Forest Timber Sale Contract, see specification 7.2.7 for details.

A timber sale contract for this lump sum, sealed bid timber sale will be awarded to the responsible bidder offering the highest sealed bid price. Bids must be at or above the following advertised price for each species:

<u>PRODUCTS & SPECIES</u>	<u>ESTIMATED UNITS*</u>	<u>ADVERTISED PRICE</u>
Sawtimber		
Basswood	23.90 MBF	\$ 118.00 / MBF
Red Maple	0.40 MBF	\$ 178.00 / MBF
Sugar Maple	19.70 MBF	\$ 290.00 / MBF
White Ash	9.20 MBF	\$ 55.00 / MBF
Pulpwood		
Balsam Fir	1.00 Cords	\$ 18.90 / Cord
Hemlock	1.00 Cords	\$ 8.45 / Cord
Mixed Hardwood	165.00 Cords	\$ 25.30 / Cord

* The estimated units are final and not subject to adjustment. Prospective bidders are urged to examine this timber and to make their own estimates of quantity and quality.

BOND AND PAYMENT SCHEDULE:

1. A bond in the amount of \$666.00 to insure faithful performance of the conditions of the contract will be deposited by the successful bidder within 21 days of the sale award.
2. Cutting in any sale or unit without the required advance payment would be considered a trespass.
3. Total payment must be paid in advance or according to the following schedule:
 - (a) Ten percent (10%) of the sale value must be paid within 21 days of the sale award.
 - (b) The remainder is due before cutting begins.
4. If no cutting takes place, the 10% down payment will not be refunded.
5. Operations on the contract issued will terminate on 06/30/2018.

Description of Timber by Payment Unit (PU)

PU	MARKET GROUP	PRODUCT	QUANTITY	UNIT	ACRES	ADVERTISE PRICE
1	Basswood	Sawtimber	23.9	MBF	30.5	\$13,312.25
	Red Maple		0.4	MBF		
	Sugar Maple		19.7	MBF		
	White Ash		9.2	MBF		
	Balsam Fir	Pulpwood	1.0	Cords		
	Hemlock		1.0	Cords		
	Mixed Hardwood		165.0	Cords		
	<i>B. T. Aspen</i>		1.0	<i>Cords</i>		
	<i>Basswood</i>		25.0	<i>Cords</i>		
	<i>Beech</i>		2.0	<i>Cords</i>		
	<i>Ironwood</i>		1.0	<i>Cords</i>		
	<i>Paper Birch</i>		5.0	<i>Cords</i>		
	<i>Red Maple</i>	15.0	<i>Cords</i>			
	<i>Sugar Maple</i>	100.0	<i>Cords</i>			
	<i>White Ash</i>	15.0	<i>Cords</i>			
	<i>Yellow Birch</i>	1.0	<i>Cords</i>			
TOTAL:			53.2	MBF		
TOTAL:			167.0	Cords		

Sale Specific Conditions & Requirements

Sale Name: WESTMAN MWR

Sale Number: 33-029-17 Seq#: 1

1 - Sale Area

1.2 - Boundaries

1.2.1 - Painted boundaries (1/14)

The sale boundary and Payment Unit boundaries are marked and identified by red and yellow paint. Exterior sale boundary lines against state are marked with red paint. Interior sale boundaries are marked with yellow paint, designating patch cuts. The painted boundary line trees are not Included Timber and are to be protected.

2 - Timber Specifications

2.1 - Included Timber

2.1.1 - Clearcut unit(s) with unmerchantable trees (6/14)

Within Payment Unit(s) 1, cut all trees that are two (2) inches or more at DBH within designated patch-cut areas (bounded by yellow paint). Yellow painted boundary trees are not to be harvested. The total area of the patch cuts is 12.5 acres with patches ranging from 1/3 acre to 1 acre. Twenty patch cut areas are located within the 30 acre treatment area. No trees will be harvested outside of the designated patch cut areas.

2.2 - Utilization

2.2.2 - Chipping required (5/14)

Payment Unit 1 must be chip harvested to facilitate follow-up scarification. Products may be produced as roundwood and forwarded to decking areas in final product length, but the tops must be left intact and skidded to the landing for chipping. If market conditions limit the practicality of chipping, the producer may skid all remaining topwood out of the payment unit and scatter in locations approved by the sale administrator. Chipping or slash removal must be completed by March 15th, 2018. If the deadline is not met, damages will be collected at a rate determined by the cost for the Department to hire a contractor to complete this specification. The requirement to retain approximately 1/6 to 1/3 of tree tops and limbs less than four inches in diameter does not apply (G. C. & R. 2.2). This is due to the research nature of the unit.

2.2.3 - Stump heights (4/07)

Stump heights within Payment Unit 1 shall not exceed 12 inches for trees greater than 10 inches DBH and 4 inches for trees smaller than 10 inches DBH.

2.2.8 - Utilization and removal (5/14)

Payment Unit 1 is part of a research project. All slash and all forest products meeting standards set forth in General Condition and Requirement 2.2 - Utilization must be removed from the sale area. The slash must be chipped unless another option is negotiated with the Unit Manager or their representative to reduce, eliminate, and/or disperse the slash into the surrounding area. Chipping or slash removal must be completed by March 15th, 2018. This is because of the research nature of this project.

3 - Payments

3.3 - Pre-measured Sales

3.3.4 - Dividing payment units (7/14)

Payment Unit(s) \$18,000 in value or greater may be divided at the request of the Purchaser and upon approval of the Unit Manager. Dividing Payment Units is a contract modification which requires a Timber Sale Contract Supplement. There will be only one division per Payment Unit.

3.4 - Damaged Timber

3.4.1 - Damaged timber (6/14)

General Condition and Requirement 3.4 Damaged Timber, defines liquidated damages for undesignated live merchantable trees which are cut or injured. No damage is acceptable to residual merchantable trees. Within the sale area, if more than 5% of trees (> 4.5" DBH) within a specified area of the sale are damaged, liquidated damages will be assessed for all trees damaged. Rates will be in accordance with General Condition and Requirement 3.4 Damaged Timber, or at a rate of \$50 per

sawtimber tree and \$5 per pole sized tree, whichever is greater.

4 - Transportation

4.2 - Maintenance

4.2.1 - Hauling restriction (12/08)

Hauling may be restricted on forest roads by the Unit Manager or his/her representative. The restriction may occur during spring breakup or during other wet weather conditions.

4.2.4 - Grading (10/16)

For completion of the sale, state forest roads must be graded. In general, this will require a road grader or bull dozer to shape up the roads after forest products have been hauled off site. This includes cleaning of drainage areas, grading, crowning and filling with gravel, if necessary. The grading equipment to be used must be approved by the Unit Manager or his/her representative.

5 - Operations

5.2 - Conduct of Operations

5.2.3 - Operating Restrictions

5.2.3.1 - Operating restrictions (9/11)

Within Payment Unit(s) 1, cutting and skidding is limited to the period from August 15th, 2017 to March 15th, 2018.

Payments must be completed and operations must begin no later than February 1st 2018. This restriction is due to the necessity of assuring that all operations are on schedule for timely completion of the research project.

5.4 - Soil Protection

5.4.1 - Rutting restriction, general (7/16)

Operations are to cease immediately if equipment and weather conditions result in rutting of roads and/or skid trails which is 12 inches or greater in depth and 50 feet in length. The Unit Manager or his/her representative may restrict hauling and/or skidding if ruts exceed the specified depth. With the Unit Manager or his/her representative's approval, the Purchaser may return to the area when the risk of rutting has decreased.

7 - Other Conditions

7.2 - Extensions

7.2.2 - No extensions (3/09)

There will be no extensions granted on this contract, due to an ongoing research project.

7.2.7 - Research extension (12/16)

This is a research sale with a short contract length. The sale must be harvested promptly. One (1), twelve (12) month extension can be applied to one (1) other State Forest Timber Sale Contract owned by the purchaser or owned by one (1) designated sub-contractor of the Purchaser that works this contract. To qualify, the contract expiration date of the contract to be extended must be within twelve (12) months from the issue date of this contract. If this is the first extension on the other State Forest Timber Sale Contract, then the 5% extension fee will be waived. If this is an additional extension, the 10% fee will be reduced to 5%. The salvage extension must be used before this contract is closed-out. This specification does not alleviate the purchaser from any contractual obligations of the extended State Forest Timber Sale Contract. Per General Condition & Requirement 7.2, extensions are at the sole discretion of the DNR.



TIMBER SALE MAP

This information provided by authority of Part 525, 1994 PA 451, as amended.

Forest Management Unit Escanaba Management Unit		County Menominee County	Mapped By Bealdo	Date 5/15/2017	Page 1	of 1
Township 36N	Range 25W	Section(s) and Subdivision(s) Section 31 - NESE & SENE; Section 32 - NWSW & SWNW.		Scale 1:15,840		

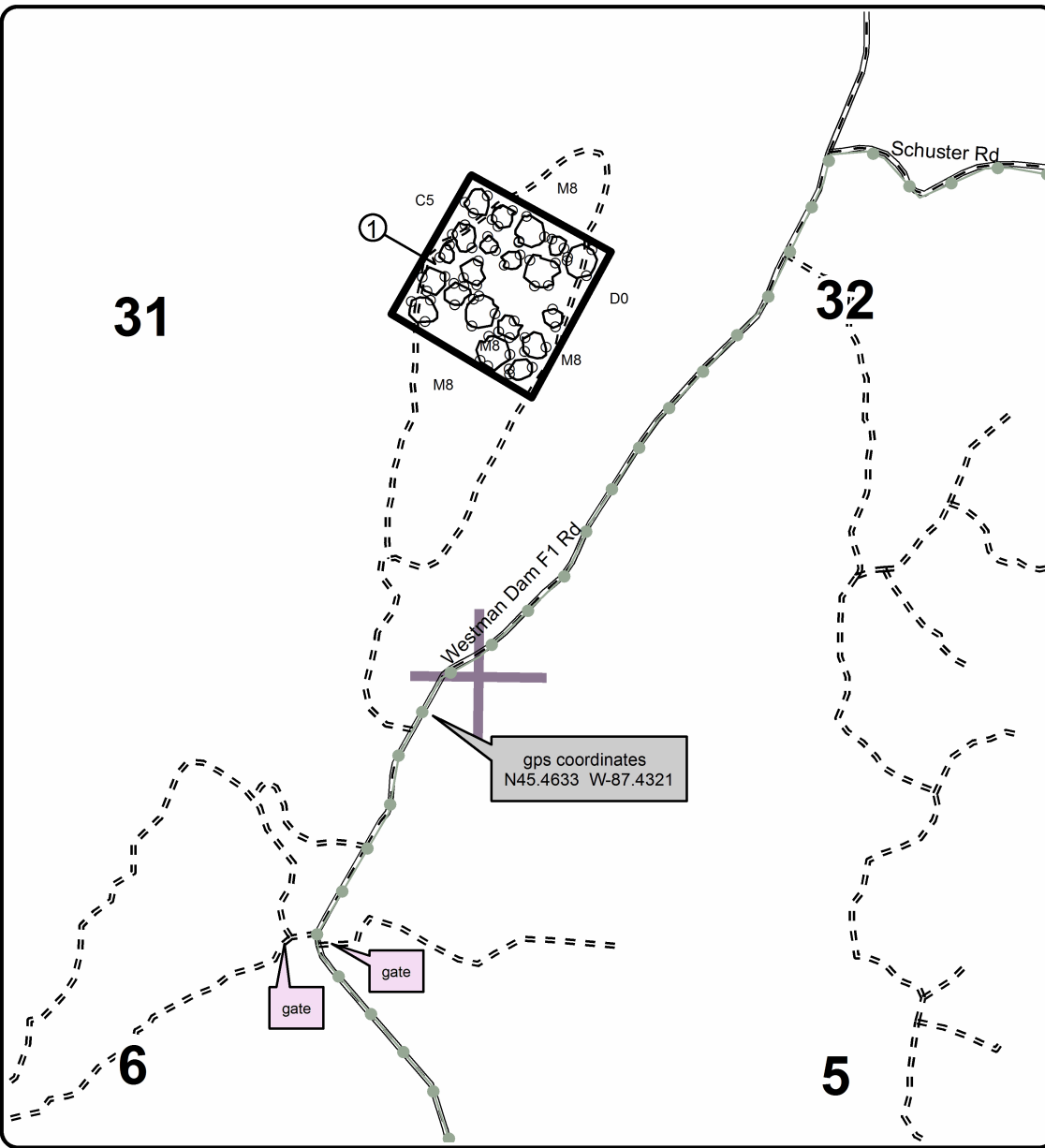
Cover Type				Density	
A = Aspen	H = Hemlock	N = Marsh	U = Upland Brush	0 = Non Stocked	5 = Pole Timber Medium
B = Paper Birch	J = Jack Pine	O = Oak	UM = Upland Mixed	1 = Seedling Sapling Poor	6 = Pole Timber Well
C = Cedar	L = Lowland Brush	P = Lowland Poplar	V = Bog or Marsh	2 = Seedling Sapling Medium	7 = Saw Timber Poor
D = Treed Bog	LM = Lowland Mixed	Q = Mixed Swamp Conifer	W = White Pine	3 = Seedling Sapling Well	8 = Saw Timber Medium
E = Swamp Hdwoods	M = Mpl, Bch, Brch	R = Red Pine	X = Non Stocked	4 = Pole Timber Poor	9 = Saw Timber Well
F = Spruce Fir	MC = Mixed Conifer	S = Black Spruce	Z = Water		
G = Grass	MD = Mixed Deciduous	T = Tamarack			

PU	Acres
1	30.5



Westman MWR
Compartment 48
30.5 Acres

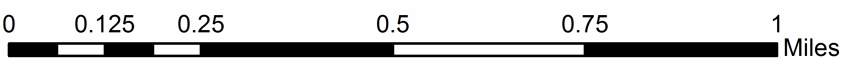
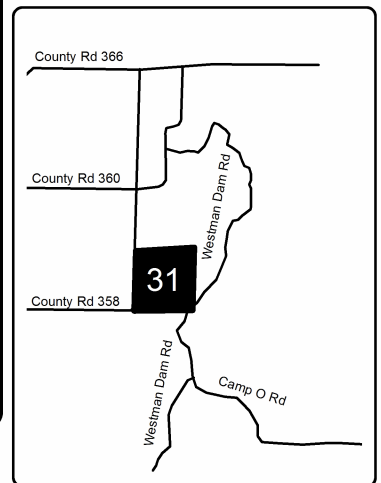
QR Code opens map in PDF Maps App



Legend

- Against State (Red)
- Patch-cut areas (Yellow)
- 31 Section Number
- ▬ Section Corners
- ▬ Gravel Roads
- - - Poor Dirt Roads
- ORV Route
- ① Payment Unit

Locator Map
1:200,000



DETEMPLE SBW (33-027-17)

; Menominee COUNTY

In response to the notice of sale to be held 3:00 p.m. (local time) on June 29, 2017, I am hereby submitting my sealed bid (firm offer) for the following forest products to be cut. Bids for individual species must be at or above the advertised price. All non-responsive bid forms may be rejected.

<u>PRODUCTS & SPECIES</u>	<u>ESTIMATED VOLUME*</u>	<u>ADVERTISED PRICE</u>	<u>BID PRICE</u>
Pulpwood			
Balsam Fir	128.00 Cords	\$ 22.35/Cord	\$ _____
Mixed Hardwood	199.00 Cords	\$ 29.90/Cord	\$ _____
N. White Cedar	33.00 Cords	\$ 26.65/Cord	\$ _____
Quaking Aspen	177.00 Cords	\$ 27.95/Cord	\$ _____
White Spruce	114.00 Cords	\$ 22.35/Cord	\$ _____

*The volumes are statistically estimated within plus (+) or minus (-) 23.76 percent. These estimated volumes are final and not subject to adjustment. Prospective bidders are urged to examine this timber and to make their own estimates of quantity and quality.

I understand that any or all bids may be rejected. All bids must be signed and all bid items must be bid or the bid form may be rejected. I also understand that consideration and awarding a contract will be based upon my past performance and ability to complete the contract based upon equipment and staffing subject to my control.

FEDERAL ID: _____ - _____ or SOCIAL SECURITY NUMBER: _____ - _____ - _____

Company or individual bidding: _____

Company representative's name: _____

Address: _____

City: _____ State: _____ Zip: _____

IF AVAILABLE, PLEASE PLACE THE PERSONALIZED LABEL FROM YOUR PROSPECTUS IN THE ABOVE BOX.

Individual or company representative's signature: _____ Date: _____

Phone number : _____ Email (optional): _____

THE WINNING BIDDER MUST COMPLETE THE VERIFICATION OF WORKER'S DISABILITY COMPENSATION ACT COMPLIANCE (ON REVERSE SIDE IF DOUBLE SIDED) WITHIN 21 DAYS OF SALE AWARD DATE



FOR DEPARTMENT USE ONLY
Sale Number (XX - XXX - XX - XX)
Forest Management Unit:

TIMBER SALE VERIFICATION OF WORKER'S DISABILITY COMPENSATION ACT COMPLIANCE

*As required by Act 317, P.A. 1969 (Worker's Compensation) and
Part 5 of Act 451 of 1994, as amended.*

VERIFICATION OF WORKER'S DISABILITY COMPENSATION ACT COMPLIANCE

- This verification must be completed and submitted within 21 days of contract award and prior to the issuance of the timber sale contract.
- In addition, if boxes 2B or 2C are checked, then Notice of Exclusion or Certificate of Insurance must be submitted within twenty-one (21) days of the contract award and prior to the issuance of the timber sale contract.
- All information must be typed or printed except for written signatures.

Please Check Appropriate Categories:

1. My business is organized as (you **must** check one of the boxes below):
 - A. Sole Proprietorship (individual)
 - B. Partnership
 - C. Corporation

2. You **must** check one of the boxes below:
 - A. I certify my business is a sole proprietorship and it has no employees but the sole proprietor. I am not subject to the Worker's Compensation Laws.
 - B. I certify my business has satisfied its obligation to the Worker's Compensation Act through the use of an approved Notice of Exclusion (BWC-337, Rev. 5/96). I will provide a copy of the Notice of Exclusion within 21 days of the contract award. (For questions or a copy of the BWC-337, please call the Worker's Compensation Bureau at 517-322-1195).
 - C. I certify my business has a Worker's Compensation Policy. I will provide an original Certificate of Insurance within twenty-one (21) days of the contract award.

3. If you have checked item 2(A) or 2(B), you **must** indicate the number of **both** full-time and part-time employees, other than yourself, including family members and active partners (if none, you must enter "0").

_____ Full-time Employees

_____ Part-time Employees

Name of Business		Federal ID (or) Social Security No.	
Address		Telephone ()	
City	State	ZIP	

I hereby certify that the above information is true and correct. I agree to notify the Michigan DNR of any changes that occur in factors affecting my coverage during any of my present and future operations.

Signature of Owner or Authorized Representative

Title

Date

Please complete the "SEALED BID" information on the next page

County Line MWR (33-028-17)
 ; Menominee COUNTY

In response to the notice of sale to be held 3:00 p.m. (local time) on June 29, 2017, I am hereby submitting my sealed bid (firm offer) for the following forest products to be cut. Bids for individual species must be at or above the advertised price. All non-responsive bid forms may be rejected.

<u>PRODUCTS & SPECIES</u>	<u>ESTIMATED VOLUME*</u>	<u>ADVERTISED PRICE</u>	<u>BID PRICE</u>
Sawtimber			
Basswood	28.20 MBF	\$ 128.00/MBF	\$ _____
Beech	16.90 MBF	\$ 67.00/MBF	\$ _____
Red Maple	7.10 MBF	\$ 194.00/MBF	\$ _____
Sugar Maple	78.20 MBF	\$ 316.00/MBF	\$ _____
White Ash	28.00 MBF	\$ 60.00/MBF	\$ _____
Yellow Birch	5.50 MBF	\$ 95.00/MBF	\$ _____
Pulpwood			
Balsam Fir	6.00 Cords	\$ 20.65/Cord	\$ _____
Hemlock	29.00 Cords	\$ 9.25/Cord	\$ _____
Mixed Hardwood	370.00 Cords	\$ 27.60/Cord	\$ _____
N. White Cedar	11.00 Cords	\$ 24.60/Cord	\$ _____

*The volumes are statistically estimated within plus (+) or minus (-) 12.34 percent. These estimated volumes are final and not subject to adjustment. Prospective bidders are urged to examine this timber and to make their own estimates of quantity and quality.

I understand that any or all bids may be rejected. All bids must be signed and all bid items must be bid or the bid form may be rejected. I also understand that consideration and awarding a contract will be based upon my past performance and ability to complete the contract based upon equipment and staffing subject to my control.

FEDERAL ID: _____ or SOCIAL SECURITY NUMBER: _____
 Company or individual bidding: _____
 Company representative's name: _____
 Address: _____
 City: _____ State: _____ Zip: _____

IF AVAILABLE, PLEASE PLACE THE PERSONALIZED LABEL FROM YOUR PROSPECTUS IN THE ABOVE BOX.

Individual or company representative's signature: _____ Date: _____

Phone number : _____ Email (optional): _____

THE WINNING BIDDER MUST COMPLETE THE VERIFICATION OF WORKER'S DISABILITY COMPENSATION ACT COMPLIANCE (ON REVERSE SIDE IF DOUBLE SIDED) WITHIN 21 DAYS OF SALE AWARD DATE



FOR DEPARTMENT USE ONLY
Sale Number (XX - XXX - XX - XX)
Forest Management Unit:

TIMBER SALE VERIFICATION OF WORKER'S DISABILITY COMPENSATION ACT COMPLIANCE

*As required by Act 317, P.A. 1969 (Worker's Compensation) and
Part 5 of Act 451 of 1994, as amended.*

VERIFICATION OF WORKER'S DISABILITY COMPENSATION ACT COMPLIANCE

- This verification must be completed and submitted within 21 days of contract award and prior to the issuance of the timber sale contract.
- In addition, if boxes 2B or 2C are checked, then Notice of Exclusion or Certificate of Insurance must be submitted within twenty-one (21) days of the contract award and prior to the issuance of the timber sale contract.
- All information must be typed or printed except for written signatures.

Please Check Appropriate Categories:

1. My business is organized as (you **must** check one of the boxes below):
 - A. Sole Proprietorship (individual)
 - B. Partnership
 - C. Corporation

2. You **must** check one of the boxes below:
 - A. I certify my business is a sole proprietorship and it has no employees but the sole proprietor. I am not subject to the Worker's Compensation Laws.
 - B. I certify my business has satisfied its obligation to the Worker's Compensation Act through the use of an approved Notice of Exclusion (BWC-337, Rev. 5/96). I will provide a copy of the Notice of Exclusion within 21 days of the contract award. (For questions or a copy of the BWC-337, please call the Worker's Compensation Bureau at 517-322-1195).
 - C. I certify my business has a Worker's Compensation Policy. I will provide an original Certificate of Insurance within twenty-one (21) days of the contract award.

3. If you have checked item 2(A) or 2(B), you **must** indicate the number of **both** full-time and part-time employees, other than yourself, including family members and active partners (if none, you must enter "0").

_____ Full-time Employees

_____ Part-time Employees

Name of Business		Federal ID (or) Social Security No.	
Address		Telephone ()	
City	State	ZIP	

I hereby certify that the above information is true and correct. I agree to notify the Michigan DNR of any changes that occur in factors affecting my coverage during any of my present and future operations.

Signature of Owner or Authorized Representative

Title

Date

Please complete the "SEALED BID" information on the next page

WESTMAN MWR (33-029-17)
; Menominee COUNTY

In response to the notice of sale to be held 3:00 p.m. (local time) on June 29, 2017, I am hereby submitting my sealed bid (firm offer) for the following forest products to be cut. Bids for individual species must be at or above the advertised price. All non-responsive bid forms may be rejected.

<u>PRODUCTS & SPECIES</u>	<u>ESTIMATED VOLUME*</u>	<u>ADVERTISED PRICE</u>	<u>BID PRICE</u>
Sawtimber			
Basswood	23.90 MBF	\$ 118.00/MBF	\$ _____
Red Maple	0.40 MBF	\$ 178.00/MBF	\$ _____
Sugar Maple	19.70 MBF	\$ 290.00/MBF	\$ _____
White Ash	9.20 MBF	\$ 55.00/MBF	\$ _____
Pulpwood			
Balsam Fir	1.00 Cords	\$ 18.90/Cord	\$ _____
Hemlock	1.00 Cords	\$ 8.45/Cord	\$ _____
Mixed Hardwood	165.00 Cords	\$ 25.30/Cord	\$ _____

*These estimated volumes are final and not subject to adjustment. Prospective bidders are urged to examine this timber and to make their own estimates of quantity and quality.

I understand that any or all bids may be rejected. All bids must be signed and all bid items must be bid or the bid form may be rejected. I also understand that consideration and awarding a contract will be based upon my past performance and ability to complete the contract based upon equipment and staffing subject to my control.

FEDERAL ID: _____ or SOCIAL SECURITY NUMBER: _____

Company or individual bidding: _____

Company representative's name: _____

Address: _____

City: _____ State: _____ Zip: _____

IF AVAILABLE, PLEASE PLACE THE PERSONALIZED LABEL FROM YOUR PROSPECTUS IN THE ABOVE BOX.

Individual or company representative's signature: _____ Date: _____

Phone number : _____ Email (optional): _____

THE WINNING BIDDER MUST COMPLETE THE VERIFICATION OF WORKER'S DISABILITY COMPENSATION ACT COMPLIANCE (ON REVERSE SIDE IF DOUBLE SIDED) WITHIN 21 DAYS OF SALE AWARD DATE



FOR DEPARTMENT USE ONLY
Sale Number (XX - XXX - XX - XX)
Forest Management Unit:

TIMBER SALE VERIFICATION OF WORKER'S DISABILITY COMPENSATION ACT COMPLIANCE

*As required by Act 317, P.A. 1969 (Worker's Compensation) and
Part 5 of Act 451 of 1994, as amended.*

VERIFICATION OF WORKER'S DISABILITY COMPENSATION ACT COMPLIANCE

- This verification must be completed and submitted within 21 days of contract award and prior to the issuance of the timber sale contract.
- In addition, if boxes 2B or 2C are checked, then Notice of Exclusion or Certificate of Insurance must be submitted within twenty-one (21) days of the contract award and prior to the issuance of the timber sale contract.
- All information must be typed or printed except for written signatures.

Please Check Appropriate Categories:

1. My business is organized as (you **must** check one of the boxes below):
 - A. Sole Proprietorship (individual)
 - B. Partnership
 - C. Corporation

2. You **must** check one of the boxes below:
 - A. I certify my business is a sole proprietorship and it has no employees but the sole proprietor. I am not subject to the Worker's Compensation Laws.
 - B. I certify my business has satisfied its obligation to the Worker's Compensation Act through the use of an approved Notice of Exclusion (BWC-337, Rev. 5/96). I will provide a copy of the Notice of Exclusion within 21 days of the contract award. (For questions or a copy of the BWC-337, please call the Worker's Compensation Bureau at 517-322-1195).
 - C. I certify my business has a Worker's Compensation Policy. I will provide an original Certificate of Insurance within twenty-one (21) days of the contract award.

3. If you have checked item 2(A) or 2(B), you **must** indicate the number of **both** full-time and part-time employees, other than yourself, including family members and active partners (if none, you must enter "0").

_____ Full-time Employees

_____ Part-time Employees

Name of Business		Federal ID (or) Social Security No.	
Address		Telephone ()	
City	State	ZIP	

I hereby certify that the above information is true and correct. I agree to notify the Michigan DNR of any changes that occur in factors affecting my coverage during any of my present and future operations.

Signature of Owner or Authorized Representative

Title

Date

Please complete the "SEALED BID" information on the next page

DETEMPLE MWR (33-026-17)
; Menominee COUNTY

In response to the notice of sale to be held 3:00 p.m. (local time) on June 29, 2017, I am hereby submitting my sealed bid (firm offer) for the following forest products to be cut. Bids for individual species must be at or above the advertised price. All non-responsive bid forms may be rejected.

<u>PRODUCTS & SPECIES</u>	<u>ESTIMATED VOLUME*</u>	<u>ADVERTISED PRICE</u>	<u>BID PRICE</u>
Sawtimber			
Basswood	10.30 MBF	\$ 128.00/MBF	\$ _____
Sugar Maple	3.20 MBF	\$ 316.00/MBF	\$ _____
White Ash	6.30 MBF	\$ 60.00/MBF	\$ _____
Pulpwood			
Mixed Hardwood	398.00 Cords	\$ 27.60/Cord	\$ _____
Quaking Aspen	14.00 Cords	\$ 25.80/Cord	\$ _____

*The volumes are statistically estimated within plus (+) or minus (-) 31.77 percent. These estimated volumes are final and not subject to adjustment. Prospective bidders are urged to examine this timber and to make their own estimates of quantity and quality.

I understand that any or all bids may be rejected. All bids must be signed and all bid items must be bid or the bid form may be rejected. I also understand that consideration and awarding a contract will be based upon my past performance and ability to complete the contract based upon equipment and staffing subject to my control.

FEDERAL ID: ____ - ____ - ____ or SOCIAL SECURITY NUMBER: ____ - ____ - ____

Company or individual bidding: _____

Company representative's name: _____

Address: _____

City: _____ State: _____ Zip: _____

IF AVAILABLE, PLEASE PLACE THE PERSONALIZED LABEL FROM YOUR PROSPECTUS IN THE ABOVE BOX.

Individual or company representative's signature: _____ Date: _____

Phone number : _____ Email (optional): _____

THE WINNING BIDDER MUST COMPLETE THE VERIFICATION OF WORKER'S DISABILITY COMPENSATION ACT COMPLIANCE (ON REVERSE SIDE IF DOUBLE SIDED) WITHIN 21 DAYS OF SALE AWARD DATE



FOR DEPARTMENT USE ONLY	
Sale Number (XX - XXX - XX - XX)	
Forest Management Unit:	

TIMBER SALE VERIFICATION OF WORKER'S DISABILITY COMPENSATION ACT COMPLIANCE

As required by Act 317, P.A. 1969 (Worker's Compensation) and
Part 5 of Act 451 of 1994, as amended.

VERIFICATION OF WORKER'S DISABILITY COMPENSATION ACT COMPLIANCE

- This verification must be completed and submitted within 21 days of contract award and prior to the issuance of the timber sale contract.
- In addition, if boxes 2B or 2C are checked, then Notice of Exclusion or Certificate of Insurance must be submitted within twenty-one (21) days of the contract award and prior to the issuance of the timber sale contract.
- All information must be typed or printed except for written signatures.

Please Check Appropriate Categories:

1. My business is organized as (you **must** check one of the boxes below):
 - A. Sole Proprietorship (individual)
 - B. Partnership
 - C. Corporation
2. You **must** check one of the boxes below:
 - A. I certify my business is a sole proprietorship and it has no employees but the sole proprietor. I am not subject to the Worker's Compensation Laws.
 - B. I certify my business has satisfied its obligation to the Worker's Compensation Act through the use of an approved Notice of Exclusion (BWC-337, Rev. 5/96). I will provide a copy of the Notice of Exclusion within 21 days of the contract award. (For questions or a copy of the BWC-337, please call the Worker's Compensation Bureau at 517-322-1195).
 - C. I certify my business has a Worker's Compensation Policy. I will provide an original Certificate of Insurance within twenty-one (21) days of the contract award.
3. If you have checked item 2(A) or 2(B), you **must** indicate the number of **both** full-time and part-time employees, other than yourself, including family members and active partners (if none, you must enter "0").

_____ Full-time Employees

_____ Part-time Employees

Name of Business		Federal ID (or) Social Security No.	
Address		Telephone ()	
City	State	ZIP	

I hereby certify that the above information is true and correct. I agree to notify the Michigan DNR of any changes that occur in factors affecting my coverage during any of my present and future operations.

Signature of Owner or Authorized Representative

Title

Date

Please complete the "SEALED BID" information on the next page

FORM

PAST THE GATE MWR (33-004-17)

; Delta COUNTY

In response to the notice of sale to be held 3:00 p.m. (local time) on June 29, 2017, I am hereby submitting my sealed bid (firm offer) for the following forest products to be cut. Bids for individual species must be at or above the advertised price. All non-responsive bid forms may be rejected.

<u>PRODUCTS & SPECIES</u>	<u>ESTIMATED VOLUME*</u>	<u>ADVERTISED PRICE</u>	<u>BID PRICE</u>
Sawtimber			
Basswood	4.20 MBF	\$ 118.00/MBF	\$ _____
Red Maple	1.80 MBF	\$ 178.00/MBF	\$ _____
Sugar Maple	31.20 MBF	\$ 290.00/MBF	\$ _____
Pulpwood			
Mixed Hardwood	59.00 Cords	\$ 25.30/Cord	\$ _____

*The volumes are statistically estimated within plus (+) or minus (-) 22.34 percent. These estimated volumes are final and not subject to adjustment. Prospective bidders are urged to examine this timber and to make their own estimates of quantity and quality.

I understand that any or all bids may be rejected. All bids must be signed and all bid items must be bid or the bid form may be rejected. I also understand that consideration and awarding a contract will be based upon my past performance and ability to complete the contract based upon equipment and staffing subject to my control.

FEDERAL ID: _____ or SOCIAL SECURITY NUMBER: _____

Company or individual bidding: _____

Company representative's name: _____

Address: _____

City: _____ State: _____ Zip: _____

IF AVAILABLE, PLEASE PLACE THE PERSONALIZED LABEL FROM YOUR PROSPECTUS IN THE ABOVE BOX.

Individual or company representative's signature: _____ Date: _____

Phone number : _____ Email (optional): _____

THE WINNING BIDDER MUST COMPLETE THE VERIFICATION OF WORKER'S DISABILITY COMPENSATION ACT COMPLIANCE (ON REVERSE SIDE IF DOUBLE SIDED) WITHIN 21 DAYS OF SALE AWARD DATE



FOR DEPARTMENT USE ONLY
Sale Number (XX - XXX - XX - XX)
Forest Management Unit:

TIMBER SALE VERIFICATION OF WORKER'S DISABILITY COMPENSATION ACT COMPLIANCE

*As required by Act 317, P.A. 1969 (Worker's Compensation) and
Part 5 of Act 451 of 1994, as amended.*

VERIFICATION OF WORKER'S DISABILITY COMPENSATION ACT COMPLIANCE

- This verification must be completed and submitted within 21 days of contract award and prior to the issuance of the timber sale contract.
- In addition, if boxes 2B or 2C are checked, then Notice of Exclusion or Certificate of Insurance must be submitted within twenty-one (21) days of the contract award and prior to the issuance of the timber sale contract.
- All information must be typed or printed except for written signatures.

Please Check Appropriate Categories:

1. My business is organized as (you **must** check one of the boxes below):
 - A. Sole Proprietorship (individual)
 - B. Partnership
 - C. Corporation

2. You **must** check one of the boxes below:
 - A. I certify my business is a sole proprietorship and it has no employees but the sole proprietor. I am not subject to the Worker's Compensation Laws.
 - B. I certify my business has satisfied its obligation to the Worker's Compensation Act through the use of an approved Notice of Exclusion (BWC-337, Rev. 5/96). I will provide a copy of the Notice of Exclusion within 21 days of the contract award. (For questions or a copy of the BWC-337, please call the Worker's Compensation Bureau at 517-322-1195).
 - C. I certify my business has a Worker's Compensation Policy. I will provide an original Certificate of Insurance within twenty-one (21) days of the contract award.

3. If you have checked item 2(A) or 2(B), you **must** indicate the number of **both** full-time and part-time employees, other than yourself, including family members and active partners (if none, you must enter "0").

_____ Full-time Employees

_____ Part-time Employees

Name of Business		Federal ID (or) Social Security No.	
Address		Telephone ()	
City	State	ZIP	

I hereby certify that the above information is true and correct. I agree to notify the Michigan DNR of any changes that occur in factors affecting my coverage during any of my present and future operations.

Signature of Owner or Authorized Representative

Title

Date

Please complete the "SEALED BID" information on the next page