



**DEPARTMENT OF NATURAL RESOURCES
STATE OF MICHIGAN**

TIMBER SALE PROSPECTUS #5977

SCHEDULED SALE DATE AND TIME: 3:00 p.m. (local time) on August 10, 2017.

LOCATION: GAYLORD FIELD OFFICE, 1732 WEST M-32, GAYLORD, MI 49735.

PROSPECTUS NOTE: The bidder is advised to inspect the sale area and review the location, estimated volumes, operating costs and contract terms of proposed sales. Please be aware that some landowners may request 60 days or more notice for access across their land.

Notice is hereby given that bids will be received by the Unit Manager, GAYLORD MANAGEMENT UNIT, for certain timber on the following described lands:

Hophornbeamaspens (52-018-16)

Antrim County, Advertised Price \$114,295.40, 254.7 Acres, Aspen, Hardwood, Sugar Maple.

SALE NOTE: Some rolling topography and slopes, but mostly flat. No operating restriction periods.

A significant amount of pre-merchantable trees are present in the understory and will need to be cut; see spec 2.1.1 for details.

Access will be off of Harvey Road from the south, which is gated at Landslide Overlook. Harvey Road is also part of the North Country trail.

A recreation site such as a trail, pathway, or campground is within the sale area or the vicinity. Certain restrictions/specifications may be applicable including time restrictions.

Landslide Hardwoods 3 (52-022-16)

Antrim County, Advertised Price \$46,271.40, 157.9 Acres, Hardwood, Sugar Maple.

SALE NOTE: Some rolling topography and steep slopes, but overall mostly flat and easily workable. No harvesting during bark slip: April 15 to July 15. Access will be off of Harvey Road from the south, which is gated at Landslide Overlook. Harvey Road is also part of the North Country trail.

A recreation site such as a trail, pathway, or campground is within the sale area or the vicinity. Certain restrictions/specifications may be applicable including time restrictions.

Big Plan Hardwoods (52-026-16)

Antrim County, Advertised Price \$28,131.40, 94.6 Acres, Hardwood, Sugar Maple.

SALE NOTE: Sale is located 3 miles from the nearest gravel road. Relatively flat terrain.

BID INSTRUCTIONS (VER. 09/02/2016):

1. Scheduled Bid Location, Date, and Time (2/11)

Bids must be received by the Unit Manager, GAYLORD OFFICE, 1732 WEST M-32, GAYLORD, MI 49735, no later than 3:00 p.m. (local time) on August 10, 2017. For further information concerning this sale, contact Joyce Angel at 989-732-3541 extension 5440.

2. Bidder's Qualifications (5/16)

Purchaser shall obtain workers compensation insurance to cover claims under Michigan's Worker's Disability Compensation Act of 1969 or similar employee benefit act of any other state applicable to an employee. If all or part of a timber sale was prepared by a private contractor, the contractor and that contractor's company are not permitted to bid on the timber sale contract. Bids will not be accepted from individuals or companies appearing on the DNR/FRD No-Bid List. This list contains the names of purchasers who previously failed to execute a contract within 21-days or who have a history of poor performance.

3. Preparation of Sealed Bids (5/16)

Bid Forms may be completed online thru Michigan DNR Timber Sale Online Bidding (OLB) at www.michigan.gov/timberbidding or by completing the hardcopy Bid Form found in the Timber Sale Prospectus. Hardcopy Bid Forms shall be manually signed in ink. Registration in OLB is considered your 'signature' for all bids submitted thru that system. Bid prices must be entered for each species and product in the Bid Price column for all material subject to bidding and all fill-in blanks must be completed. If erasures or other changes appear on the hardcopy Bid Form, each erasure or change must be initialed by the person signing the bid.

4. Submission of Sealed Bids (5/16)

Bid forms may be obtained from the Unit Manager or thru OLB. Bids may be submitted hardcopy or thru OLB. All hardcopy bids must be submitted on the bid form and in an envelope clearly identified as described in this section. NOTE: Only one bid form per bid envelope. Sealed bids must be submitted to the Unit office designated in the prospectus and must be submitted at or prior to the time established in the prospectus. The envelope should show on the outside (a) the sale name or number and (b) the date and time of bid opening, as shown in the prospectus. Bids received after the time specified in the sale prospectus are late bids and will be rejected.

It is possible for a bidder to submit multiple bids on a single sale. For example, a bid may be submitted hardcopy and a bid may be submitted thru OLB. Or, two bidders from the same company could both submit bids on the same sale. If this were to happen, the State would accept all bids received and award the contract accordingly. All bidding and contractual requirements would apply to all bids received.

5. Public Opening of Sealed Bids (7/16)

If conditions permit, the sealed bids will be publicly opened and posted at the time and place set in the prospectus.

If a bidder, present at a bid opening, has submitted bids on more than one sale, that bidder may withdraw their unopened bid envelopes or announce the withdrawal of their online bid after being declared the successful bidder on one sale.

6. Award of Contract (1/11)

Award of the contract will be made to the Bidder whose bid, conforming to the prospectus, is most advantageous to the State of Michigan on the basis of total value at rates bid for the estimated quantities. The State reserves the right to reject any bid or waive any minor irregularity in bids received. A written award mailed (or otherwise furnished) to the successful Bidder shall be deemed to result in a binding contract without further action by either party.

7. Down Payment (1/11)

The Bidder to whom award is made must make a down payment within 21 days of the sale award. The amount of the down payment will be calculated as shown in the Bond and Payment Schedule of this prospectus. Only cash may be used to meet this requirement.

8. Performance Security (1/11)

As guarantee of faithful performance, a cash bond, certificate of deposit, surety bond or irrevocable letter of credit (LOC) is required within 21 days of the sale award. The amount of the performance security is shown in the Bond and

Payment Schedule of this prospectus. If an LOC or surety is used, the coverage must extend for at least 6 months beyond the contract expiration.

9. Timber Sale Contract (9/14)

Additional conditions and requirements common to all timber sales are listed on the timber sale contract (R4031) and are available on line at www.michigan.gov/timber. Contact the Unit Manager for additional information or a sample contract. Within 21 days of the date of the award letter, the bidder must sign the contract and provide the required down payment, performance security, and verification of worker's disability compensation. The down payment and performance security shall be in accordance with the provisions of the timber sale contract, in the sums stated in this prospectus. If these actions are not taken, then the Bidder, the Bidder's corporation, and the corporation's principals may not be permitted to bid on State timber sales for a period of 1 year. In addition, the Bidder certifies that if awarded this contract, the Bidder will complete the timber sale contract in accordance with its terms and any modifications thereof including requirements to purchase, cut, and remove the included timber by the expiration date.

10. Disclaimer of Estimates and Bidder's Warranty of Inspection (7/16)

Before submitting this bid, the Bidder is advised and cautioned to inspect the sale area, review the requirements of the sale contract, and take other steps as may be reasonably necessary to ascertain the location, estimated volumes, construction estimates, and operating costs of the proposed sale. Failure to do so will not relieve the Bidder from responsibility for completing the contract.

The Bidder warrants that this bid is submitted solely on the basis of the Bidder's examination and inspection of the quality and quantity of the timber offered for sale and the Bidder's opinion of the value thereof and the costs of recovery. No reliance should be placed on the State of Michigan's estimates of timber quality, quantity or costs of recovery. Bidder further acknowledges that the State of Michigan: (i) expressly disclaims any warranty of fitness of timber for any purpose; (ii) offers this timber as is without any warranty of quality (merchantability) or quantity and (iii) expressly disclaims any warranty as to the quantity or quality of timber sold.

11. Certification and Chain-of-Custody (10/14)

Unless otherwise indicated in the contract under section 7 – Other Conditions of the Sale Specific Conditions & Requirements, the area encompassed by this timber sale is certified to the standards of the Forest Stewardship Council (FSC) - Certificate #SCS-FM/COC-00090N and the Sustainable Forestry Initiative (SFI) - Certificate # NSF-SFIS-5Y031-SF5. Forest products from this sale may be delivered to the mill as "FSC 100% and / or SFI certified" as long as the contractor hauling the forest products is chain-of-custody (COC) certified or covered under a COC certificate from the destination mill. The purchaser is responsible for maintaining COC after leaving the sale area.

12. Good Neighbor Authority (GNA) Requirements (7/16)

If the name of this timber sales contains the acronym GNA, it is authorized by the Good Neighbor Authority (GNA) and covered by various agreements between the U.S. Forest Service and the State. The timber sale occurs on federal land and the following conditions apply:

GNA contracts on US Forest Service land will not be awarded to purchasers on the Federal list of excluded parties. The System for Award Management (SAM) will be checked for active excluded parties prior to award of contract. In addition, the Bidder to whom award is made must complete an Assurance Regarding Felony Conviction or Tax Delinquent Status for Corporate Applicants (AD-3031).

13. Good Neighbor Authority (GNA) Requirements, con't (9/16)

Bidder certifies, by signing this bid form, that to the best of Bidder's knowledge that the following representations are accurate and complete.

- a. That the Bidder and its principals are not presently debarred, suspended, proposed for debarment, declared ineligible, or voluntary excluded from timber sales (covered transactions) by any Federal department or agency.
- b. That the Bidder and its principals have not within a 3-year period preceding this bid been convicted of or had a civil judgment rendered against them for commission of fraud or a criminal offense in connection with obtaining, attempting to obtain, or performing a public (Federal, State, or local) transaction or contract under a public transaction; violation of Federal or State antitrust statutes or commission of embezzlement, theft, forgery, bribery, falsification or destruction of records, making false statements, or receiving stolen property.

c. That the Bidder and its principals are not presently indicted for or otherwise criminally or civilly charged by a governmental entity (Federal, State, or local) with commission of any of the offenses enumerated in paragraph b of this certification.

d. That the Bidder and its principals have not within a 3-year period preceding this bid had one or more public transactions (Federal, State, or local) terminated for breach or default of a timber or forest product contract.

Bidders that cannot certify this requirement, in whole or in part, shall submit an explanation with their bid.

KEITH CREAGH

Director

TIMBER SALE INFORMATION

Hophornbeamaspens (52-018-16)

Antrim County (Advertised Price \$114,295.40)

SALE NOTE: Some rolling topography and slopes, but mostly flat. No operating restriction periods.

A significant amount of pre-merchantable trees are present in the understory and will need to be cut; see spec 2.1.1 for details.

Access will be off of Harvey Road from the south, which is gated at Landslide Overlook. Harvey Road is also part of the North Country trail.

A recreation site such as a trail, pathway, or campground is within the sale area or the vicinity. Certain restrictions/specifications may be applicable including time restrictions.

A timber sale contract for this lump sum, sealed bid timber sale will be awarded to the responsible bidder offering the highest sealed bid price. Bids must be at or above the following advertised price for each species:

<u>PRODUCTS & SPECIES</u>	<u>ESTIMATED UNITS*</u>	<u>ADVERTISED PRICE</u>
Sawtimber		
American Elm	6.50 MBF	\$ 111.00 / MBF
Basswood	188.40 MBF	\$ 59.00 / MBF
Mixed Aspen	82.80 MBF	\$ 47.00 / MBF
Red Maple	51.00 MBF	\$ 139.00 / MBF
Sugar Maple	215.10 MBF	\$ 238.00 / MBF
Pulpwood		
Basswood	943.00 Cords	\$ 5.40 / Cord
Mixed Aspen	434.00 Cords	\$ 14.55 / Cord
Mixed Hardwood	192.00 Cords	\$ 16.75 / Cord
Red Maple	395.00 Cords	\$ 16.75 / Cord
Sugar Maple	1,137.00 Cords	\$ 16.75 / Cord

* The total volume is statistically estimated within plus (+) or minus (-) 9.72 percent. The estimated units are final and not subject to adjustment. Prospective bidders are urged to examine this timber and to make their own estimates of quantity and quality.

BOND AND PAYMENT SCHEDULE:

1. A bond in the amount of \$5,715.00 to insure faithful performance of the conditions of the contract will be deposited by the successful bidder within 21 days of the sale award.
2. Cutting in any sale or unit without the required advance payment would be considered a trespass.
3. Total payment must be paid in advance or according to the following schedule:
 - (a) Ten percent (10%) of the sale value must be paid within 21 days of the sale award.
 - (b) The 10% down payment will be credited towards the first unit cut.
4. If no cutting takes place, the 10% down payment will not be refunded.
5. Operations on the contract issued will terminate on 09/30/2020.

Description of Timber by Payment Unit (PU)

PU	MARKET GROUP	PRODUCT	QUANTITY	UNIT	ACRES	ADVERTISE PRICE
1	American Elm Basswood Mixed Aspen <i>B. T. Aspen</i> <i>Quaking Aspen</i> Red Maple Sugar Maple	Sawtimber	1.3	MBF	44.6	\$20,243.00
			34.5	MBF		
			15.3	MBF		
			3.6	<i>MBF</i>		
			11.7	<i>MBF</i>		
			5.6	MBF		
			40.9	MBF		
		Pulpwood	174.0	Cords		
			78.0	Cords		
			24.0	<i>Cords</i>		
			54.0	<i>Cords</i>		
			35.0	Cords		
			15.0	<i>Cords</i>		
			4.0	<i>Cords</i>		
			16.0	<i>Cords</i>		
			42.0	Cords		
			207.0	Cords		
2	American Elm Basswood Mixed Aspen <i>B. T. Aspen</i> <i>Quaking Aspen</i> Red Maple Sugar Maple	Sawtimber	1.1	MBF	38.7	\$16,527.95
			29.0	MBF		
			12.5	MBF		
			3.0	<i>MBF</i>		
			9.5	<i>MBF</i>		
			4.5	MBF		
			33.2	MBF		
		Pulpwood	144.0	Cords		
			63.0	Cords		
			19.0	<i>Cords</i>		
			44.0	<i>Cords</i>		
			30.0	Cords		
			12.0	<i>Cords</i>		
			5.0	<i>Cords</i>		
			13.0	<i>Cords</i>		
			34.0	Cords		
			168.0	Cords		
3	American Elm Basswood Mixed Aspen <i>B. T. Aspen</i> <i>Quaking Aspen</i> Red Maple Sugar Maple	Sawtimber	1.5	MBF	47.1	\$21,764.40
			36.8	MBF		
			16.4	MBF		
			3.9	<i>MBF</i>		
			12.5	<i>MBF</i>		
			6.0	MBF		
			44.0	MBF		
		Pulpwood	186.0	Cords		
			85.0	Cords		
			26.0	<i>Cords</i>		
			59.0	<i>Cords</i>		
			37.0	Cords		
			16.0	<i>Cords</i>		
			4.0	<i>Cords</i>		
			17.0	<i>Cords</i>		
			46.0	Cords		
			222.0	Cords		
4	American Elm Basswood Mixed Aspen <i>B. T. Aspen</i> <i>Quaking Aspen</i>	Sawtimber	1.3	MBF	42.1	\$19,447.75
			32.9	MBF		
			14.7	MBF		
			3.5	<i>MBF</i>		
			11.2	<i>MBF</i>		

Description of Timber by Payment Unit (PU), con't

PU	MARKET GROUP	PRODUCT	QUANTITY	UNIT	ACRES	ADVERTISE PRICE			
4 con't	Red Maple	Sawtimber	5.4	MBF					
	Sugar Maple		39.4	MBF					
	Basswood	Pulpwood	166.0	Cords					
	Mixed Aspen		75.0	Cords					
	<i>B. T. Aspen</i>		23.0	<i>Cords</i>					
	<i>Quaking Aspen</i>		52.0	<i>Cords</i>					
	Mixed Hardwood		32.0	Cords					
	<i>American Elm</i>		14.0	<i>Cords</i>					
	<i>Black Cherry</i>		3.0	<i>Cords</i>					
	<i>Ironwood</i>		15.0	<i>Cords</i>					
	Red Maple		41.0	Cords					
	Sugar Maple		199.0	Cords					
	5	American Elm	Sawtimber	1.3			MBF	43.1	\$19,893.05
		Basswood		33.7			MBF		
Mixed Aspen			15.1	MBF					
<i>B. T. Aspen</i>			3.6	<i>MBF</i>					
<i>Quaking Aspen</i>			11.5	<i>MBF</i>					
Red Maple			5.5	MBF					
Sugar Maple			40.3	MBF					
Basswood		Pulpwood	170.0	Cords					
Mixed Aspen			77.0	Cords					
<i>B. T. Aspen</i>			23.0	<i>Cords</i>					
<i>Quaking Aspen</i>			54.0	<i>Cords</i>					
Mixed Hardwood			32.0	Cords					
<i>American Elm</i>			14.0	<i>Cords</i>					
<i>Black Cherry</i>			3.0	<i>Cords</i>					
<i>Ironwood</i>			15.0	<i>Cords</i>					
Red Maple			42.0	Cords					
Sugar Maple			204.0	Cords					
6		Basswood	Sawtimber	21.5	MBF	39.1	\$16,419.25		
	Mixed Aspen		8.8	MBF					
	<i>B. T. Aspen</i>		8.8	<i>MBF</i>					
	Red Maple		24.0	MBF					
	Sugar Maple		17.3	MBF					
	Basswood	Pulpwood	103.0	Cords					
	Mixed Aspen		56.0	Cords					
	<i>B. T. Aspen</i>		56.0	<i>Cords</i>					
	Mixed Hardwood		26.0	Cords					
	<i>Black Cherry</i>	<i>Sawtimber</i>	0.4	<i>MBF</i>					
	<i>White Ash</i>		0.4	<i>MBF</i>					
	<i>Beech</i>	<i>Pulpwood</i>	2.0	<i>Cords</i>					
	<i>Black Cherry</i>		12.0	<i>Cords</i>					
	<i>Ironwood</i>		3.0	<i>Cords</i>					
	<i>White Ash</i>		5.0	<i>Cords</i>					
	<i>Yellow Birch</i>		2.0	<i>Cords</i>					
	Red Maple		190.0	Cords					
	Sugar Maple		137.0	Cords					
TOTAL:			543.8	MBF					
TOTAL:			3,101.0	Cords					

Sale Specific Conditions & Requirements

Sale Name: Hophornbeamaspen

Sale Number: 52-018-16 Seq#: 1

1 - Sale Area

1.2 - Boundaries

1.2.1 - Painted boundaries (1/14)

The sale boundary and Payment Unit boundaries are marked and identified by red and yellow paint. Exterior sale boundary lines against state are marked with red paint. Interior Payment Unit boundaries are marked with yellow paint. The painted boundary line trees are not Included Timber and are to be protected. Yellow painted trees designating an interior Payment Unit boundary are only to be cut when all surrounding Payment Units have been paid.

2 - Timber Specifications

2.1 - Included Timber

2.1.1 - Clearcut unit(s) with unmerchantable trees (6/14)

Within Payment Unit(s) 1, 2, 3, 4, 5, & 6, cut all trees that are two (2) inches or more at DBH, except do not cut any hemlock or oak. In addition, there are a significant amount of premerchantable trees present in the understory, mostly ironwood and elm. Trees less than 4.5 inches DBH may be felled as necessary to facilitate the timber harvest. Such trees must be severed at ground level and laid flat on the ground.

3 - Payments

3.3 - Pre-measured Sales

3.3.4 - Dividing payment units (7/14)

Payment Unit(s) 1, 2, 3, 4, 5, & 6 may be divided at the request of the Purchaser and upon approval of the Unit Manager. Dividing Payment Units is a contract modification which requires a Timber Sale Contract Supplement. There will be only one division per Payment Unit.

4 - Transportation

4.1 - Construction

4.1.3 - Slash and earthen piles (8/04)

Piles or windrows of earth along roads and landings that have been widened or constructed shall be leveled. Slash from road maintenance or construction, including stumps, shall be dispersed throughout the sale or utilized.

4.1.6 - Road construction (1/09)

Construction of new roads or improvements of existing roads shall be done in such a way as to minimize the environmental and visual impacts. Merchantable trees shall be cut and utilized unless otherwise directed. Non-merchantable trees shall be severed and laid flat on the ground. Slash shall be scattered, and not left in windrows and kept a minimum of 10 feet back from the road edge. Stumps shall be set upright, not left on edge, and be moved at least 10 feet away from the road edge. Disturbed soil shall be feathered into the woods and not left in berms or windrows.

4.1.7 - Road closure (10/11)

All new roads built into the sale must be blocked to vehicle traffic upon completion of the sale. Overgrown roads that are reopened shall be considered new roads. In general, this will require constructing a four (4') foot high berm of stumps and logs covered with earth. These roads must be rendered impassable to cars and trucks. All stumps from road building and landing construction must be reserved to block any newly constructed roads upon completion of the sale. These stumps must be scattered along the road system to prohibit vehicular movement. The existing access road off of Harvey Road will also need to be closed near the gate, and the DNR will remove the gate. Contact the sale administrator for specific details of design and placement.

4.2 - Maintenance

4.2.1 - Hauling restriction (12/08)

Hauling may be restricted on forest roads by the Unit Manager or his/her representative. The restriction may occur during

wet weather conditions, or potentially during large, organized recreational events on the trails.

4.2.4 - Grading (12/14)

For completion of the sale, state forest roads must be graded. In general, this will require a road grader or bull dozer to shape up the roads after forest products have been hauled off site. The grading equipment to be used must be approved by the Unit Manager or his/her representative.

4.2.5 - Two wheel drive condition (2/04)

All existing trail roads on and adjacent to the sale area must be passable by two-wheel drive traffic for the duration of the sale.

4.4 - Access

4.4.3 - Access gate (12/08)

The access gate at the end of Harvey Road may be kept open during harvest operations, but must be locked if there will be no activity for an extended period of time. When locking the gate, make sure no one is locked inside. Make arrangements with the sale administrator to unlock the gate when necessary.

5 - Operations

5.1 - Notification

5.1.1 - Pre-sale conference (10/11)

A pre-sale conference on site between the Purchaser and sale administrator is required prior to beginning any operations to determine landing and road locations. The Unit Manager or his/her representative must be contacted at least 5 days in advance to schedule the conference.

5.1.4 - Post-sale conference (6/11)

A post-sale conference on site between the Purchaser and sale administrator is required 5 days prior to the completion of active logging operations to determine clean-up and repair of landings, road edges, and the fulfillment of other contract specifications.

5.2 - Conduct of Operations

5.2.1 - Slash

5.2.1.8 - Slash height (12/08)

No slash or tree tops may exceed 36 inches in height.

5.2.1.13 - Dispose of slash as directed (12/05)

Slash is to be disposed of as directed by the sale administrator.

5.2.2 - Hazard Trees/Snags

5.2.2.1 - Den trees (2/04)

Obvious hollow and/or den trees shall be protected and left standing unless they are a safety hazard.

5.2.29 - Shrub protection (9/07)

Do not cut or damage hawthorn, witch-hazel, dogwood or junberry as much as possible. These woody-shrub plants are highly beneficial to various wildlife species.

5.2.32 - Decking/landing restoration (9/13)

All decking and landing areas must have the surface area restored to a condition equal to or better than before. This is to ensure the proper regeneration of the stand. Wood debris, chips and "cookies" from trimmings must be removed or scattered away from landing and loading areas and may not be windrowed on the edge.

5.2.40 - Pathway protection (10/10)

The Jordan Valley Pathway is a hiking trail and is shown on the Timber Sale Map. The access road inside the gate crosses this trail. In addition, Harvey Road is part of the North Country Trail. Maintain a 20-foot wide slash, debris, and rut free zone daily, using the pathway as the centerline. Access can also be obtained off of Jordan River Road to Landslide Overlook, to avoid Harvey Road if issues with the pathway arise.

5.4 - Soil Protection

5.4.1 - Rutting restriction, general (1/09)

Operations are to cease immediately if equipment and weather conditions result in rutting of roads and skid trails which is 12 inches or greater in depth and 50 feet in length. The Unit Manager or his/her representative may restrict hauling and/or skidding if ruts exceed the specified depth. With the Unit Manager or his/her representative's approval, the Purchaser may return to the area when the risk of rutting has decreased.

5.4.2 - Skid trails (2/04)

Skid trails up and down slopes should be avoided. If however this is unavoidable, these trails will be left in a non-erodible condition using water bars, logs, and slash. Placing of slash on these skid trails while logging is ongoing may alleviate need for any further action. At the direction of the sale administrator, seed, fertilizer, and mulch may also be required.

5.8 - Protection of Endangered Species

5.8.5 - Protection of raptor nests (3/13)

All trees with raptor nests will be protected if found during harvesting operations. Notification will be made to the Unit Manager or his/her representative who will notify the Wildlife Biologist so an on-site evaluation and recommendation can be made, if necessary.

6 - Safety and Fire Prevention

6.2 - Signing

6.2.1 - Road posting (9/09)

The Purchaser is responsible for posting and maintaining caution signs on Harvey Road, which is also part of the North Country Trail, prior to beginning operations. The road must be posted on both ends of the road to warn of logging activity and truck traffic. Signs must be removed when harvest operations are suspended or completed. The Purchaser will provide these signs.

6.2.3 - Recreational trail posting (2/10)

The Purchaser is responsible for posting and maintaining caution signs on the Jordan Valley Pathway prior to beginning operations. The trail must be posted approximately 100 feet from both sides of the access road to warn of logging activity and truck traffic at both ends of the trail. Signs must be removed when harvest operations are suspended or completed. The Purchaser will provide these signs. Also, refer to specification 6.2.1 - Road posting, for sign posting instructions on the North Country Trail.



TIMBER SALE MAP

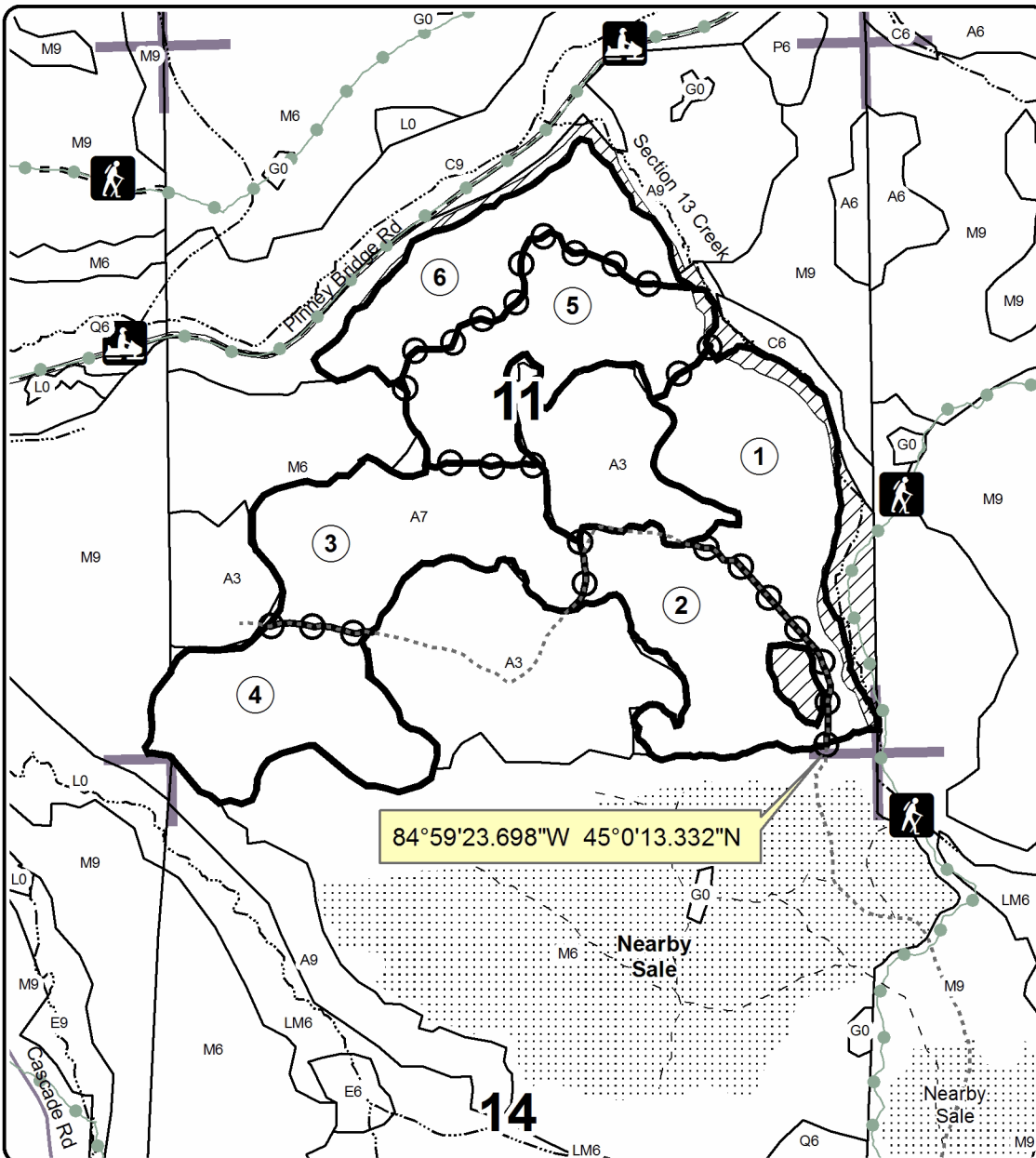
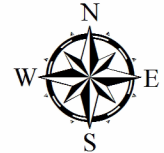
This information provided by authority of Part 525, 1994 PA 451, as amended.

Sale Number	Year
52 - 018	2016

Forest Management Unit Gaylord (South)	County Antrim	Mapped By Gilner	Date 08/24/2016	Page 1	of 1
Township 30N	Range 06W	Section(s) and Subdivision(s) Sec. 10: SESE, Sec. 14: N2NW, N2NE, Sec. 11: SW4, SE4, E2NW, SWNW, W2NE, SENE,	Scale 1:15,840		

Cover Type				Density	
A = Aspen	H = Hemlock	N = Marsh	U = Upland Brush	0 = Non Stocked	5 = Pole Timber Medium
B = Paper Birch	J = Jack Pine	O = Oak	UM = Upland Mixed	1 = Seedling Sapling Poor	6 = Pole Timber Well
C = Cedar	L = Lowland Brush	P = Lowland Poplar	V = Bog or Marsh	2 = Seedling Sapling Medium	7 = Saw Timber Poor
D = Treed Bog	LM = Lowland Mixed	Q = Mixed Swamp Conifer	W = White Pine	3 = Seedling Sapling Well	8 = Saw Timber Medium
E = Swamp Hdwoods	M = Mpl, Bch, Brch	R = Red Pine	X = Non Stocked	4 = Pole Timber Poor	9 = Saw Timber Well
F = Spruce Fir	MC = Mixed Conifer	S = Black Spruce	Z = Water		
G = Grass	MD = Mixed Deciduous	T = Tamarack			

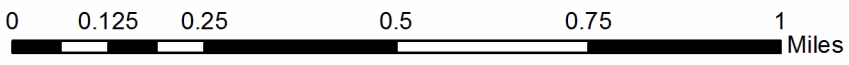
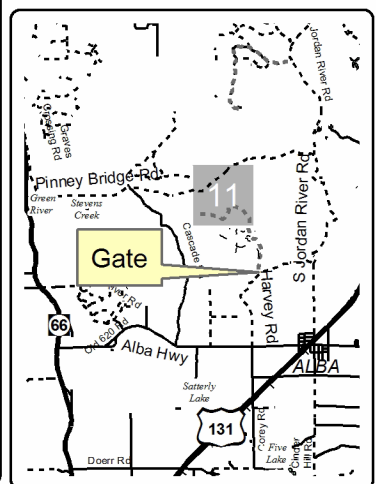
Hophornbeamspen Compartment 057 254.7 Acres



Legend

- Sale Boundary**
 - Against State (Red)
 - Payment Unit (Yellow)
- Retention Area (Hatched)
- Adjacent Stand Boundaries (Dotted)
- Adjacent Timber Sale (Dashed)
- Section Corners (Purple)
- Highway (Thick Black)
- Paved Roads (Thin Black)
- Gravel Roads (Dashed)
- Poor Dirt Roads (Dotted)
- Closed Roads (Dashed)
- Old Skid Trail (Dotted)
- Recreational Trail (Green)
- Streams (Blue)
- PU_Label (Circle)

PU	Acres	PU	Acres
1	44.6	4	42.1
2	38.7	5	43.1
3	47.1	6	39.1



Locator Map
1:200,000

TIMBER SALE INFORMATION

Landslide Hardwoods 3 (52-022-16)

Antrim County (Advertised Price \$46,271.40)

SALE NOTE: Some rolling topography and steep slopes, but overall mostly flat and easily workable. No harvesting during bark slip: April 15 to July 15. Access will be off of Harvey Road from the south, which is gated at Landslide Overlook. Harvey Road is also part of the North Country trail.

A recreation site such as a trail, pathway, or campground is within the sale area or the vicinity. Certain restrictions/specifications may be applicable including time restrictions.

A timber sale contract for this lump sum, sealed bid timber sale will be awarded to the responsible bidder offering the highest sealed bid price. Bids must be at or above the following advertised price for each species:

<u>PRODUCTS & SPECIES</u>	<u>ESTIMATED UNITS*</u>	<u>ADVERTISED PRICE</u>
Sawtimber		
American Elm	0.10 MBF	\$ 141.00 / MBF
B. T. Aspen	0.60 MBF	\$ 59.00 / MBF
Basswood	104.00 MBF	\$ 74.00 / MBF
Beech	5.20 MBF	\$ 44.00 / MBF
Black Cherry	9.70 MBF	\$ 195.00 / MBF
Red Maple	48.60 MBF	\$ 176.00 / MBF
Sugar Maple	39.80 MBF	\$ 302.00 / MBF
Yellow Birch	0.50 MBF	\$ 178.00 / MBF
Pulpwood		
B. T. Aspen	1.00 Cords	\$ 18.45 / Cord
Basswood	237.00 Cords	\$ 6.85 / Cord
Misc. Species 1	258.00 Cords	\$ 4.25 / Cord
Mixed Hardwood	612.00 Cords	\$ 21.25 / Cord

* The total volume is statistically estimated within plus (+) or minus (-) 19.39 percent. The estimated units are final and not subject to adjustment. Prospective bidders are urged to examine this timber and to make their own estimates of quantity and quality.

BOND AND PAYMENT SCHEDULE:

1. A bond in the amount of \$2,776.00 to insure faithful performance of the conditions of the contract will be deposited by the successful bidder within 21 days of the sale award.
2. Cutting in any sale or unit without the required advance payment would be considered a trespass.
3. Total payment must be paid in advance or according to the following schedule:
 - (a) Ten percent (10%) of the sale value must be paid within 21 days of the sale award.
 - (b) The 10% down payment will be credited towards the first unit cut.
4. If no cutting takes place, the 10% down payment will not be refunded.
5. Operations on the contract issued will terminate on 09/30/2020.

Description of Timber by Payment Unit (PU)

PU	MARKET GROUP	PRODUCT	QUANTITY	UNIT	ACRES	ADVERTISE PRICE	
1	American Elm	Sawtimber	0.1	MBF	43.7	\$12,816.85	
	B. T. Aspen		0.2	MBF			
	Basswood		28.7	MBF			
	Beech		1.5	MBF			
	Black Cherry		2.7	MBF			
	Red Maple		13.5	MBF			
	Sugar Maple		10.9	MBF			
	Yellow Birch		0.1	MBF			
	B. T. Aspen		Pulpwood	1.0			Cords
	Basswood			66.0			Cords
	Misc. Species 1	72.0		Cords			
	<i>White Ash</i>	72.0		<i>Cords</i>			
	Mixed Hardwood	170.0		Cords			
	<i>American Elm</i>	1.0		<i>Cords</i>			
	<i>Beech</i>	7.0		<i>Cords</i>			
	<i>Black Cherry</i>	8.0	<i>Cords</i>				
	<i>Ironwood</i>	14.0	<i>Cords</i>				
<i>Red Maple</i>	47.0	<i>Cords</i>					
<i>Sugar Maple</i>	93.0	<i>Cords</i>					
2	B. T. Aspen	Sawtimber	0.1	MBF	28.8	\$8,444.35	
	Basswood		19.0	MBF			
	Beech		0.9	MBF			
	Black Cherry		1.8	MBF			
	Red Maple		8.9	MBF			
	Sugar Maple		7.3	MBF			
	Yellow Birch		0.1	MBF			
	Basswood		Pulpwood	43.0			Cords
	Misc. Species 1			47.0			Cords
	<i>White Ash</i>			47.0			<i>Cords</i>
	Mixed Hardwood	111.0		Cords			
	<i>Beech</i>	4.0		<i>Cords</i>			
	<i>Black Cherry</i>	5.0		<i>Cords</i>			
	<i>Ironwood</i>	9.0		<i>Cords</i>			
	<i>Red Maple</i>	30.0	<i>Cords</i>				
	<i>Sugar Maple</i>	62.0	<i>Cords</i>				
	<i>Yellow Birch</i>	1.0	<i>Cords</i>				
3	B. T. Aspen	Sawtimber	0.1	MBF	26.8	\$7,874.15	
	Basswood		17.7	MBF			
	Beech		0.9	MBF			
	Black Cherry		1.6	MBF			
	Red Maple		8.2	MBF			
	Sugar Maple		6.8	MBF			
	Yellow Birch		0.1	MBF			
	Basswood		Pulpwood	40.0			Cords
	Misc. Species 1			44.0			Cords
	<i>White Ash</i>			44.0			<i>Cords</i>
	Mixed Hardwood	105.0		Cords			
	<i>Beech</i>	4.0		<i>Cords</i>			
	<i>Black Cherry</i>	5.0		<i>Cords</i>			
	<i>Ironwood</i>	9.0		<i>Cords</i>			
	<i>Red Maple</i>	28.0	<i>Cords</i>				
	<i>Sugar Maple</i>	58.0	<i>Cords</i>				
	<i>Yellow Birch</i>	1.0	<i>Cords</i>				
4	B. T. Aspen	Sawtimber	0.1	MBF	36.4	\$10,654.85	
	Basswood		24.0	MBF			
	Beech		1.2	MBF			

Description of Timber by Payment Unit (PU), con't

PU	MARKET GROUP	PRODUCT	QUANTITY	UNIT	ACRES	ADVERTISE PRICE	
4 con't	Black Cherry	Sawtimber	2.2	MBF			
	Red Maple		11.2	MBF			
	Sugar Maple		9.2	MBF			
	Yellow Birch		0.1	MBF			
	Basswood		Pulpwood	55.0			Cords
	Misc. Species 1			59.0			Cords
	<i>White Ash</i>			59.0			<i>Cords</i>
	Mixed Hardwood			141.0			Cords
	<i>Beech</i>			6.0			<i>Cords</i>
	<i>Black Cherry</i>			6.0			<i>Cords</i>
	<i>Ironwood</i>			12.0			<i>Cords</i>
	<i>Red Maple</i>			38.0			<i>Cords</i>
	<i>Sugar Maple</i>			78.0			<i>Cords</i>
	<i>Yellow Birch</i>			1.0			<i>Cords</i>
5	B. T. Aspen	Sawtimber	0.1	MBF	22.2	\$6,481.20	
	Basswood		14.6	MBF			
	Beech		0.7	MBF			
	Black Cherry		1.4	MBF			
	Red Maple		6.8	MBF			
	Sugar Maple		5.6	MBF			
	Yellow Birch		0.1	MBF			
	Basswood		Pulpwood	33.0			Cords
	Misc. Species 1			36.0			Cords
	<i>White Ash</i>			36.0			<i>Cords</i>
	Mixed Hardwood			85.0			Cords
	<i>Beech</i>			3.0			<i>Cords</i>
	<i>Black Cherry</i>			4.0			<i>Cords</i>
	<i>Ironwood</i>			7.0			<i>Cords</i>
	<i>Red Maple</i>			23.0			<i>Cords</i>
	<i>Sugar Maple</i>			48.0			<i>Cords</i>
	TOTAL:			208.5			MBF
TOTAL:			1,108.0	Cords			

Sale Specific Conditions & Requirements

Sale Name: Landslide Hardwoods 3

Sale Number: 52-022-16 Seq#: 1

1 - Sale Area

1.2 - Boundaries

1.2.1 - Painted boundaries (1/14)

The sale boundary and Payment Unit boundaries are marked and identified by red and yellow paint. Exterior sale boundary lines against state are marked with red paint. Interior Payment Unit boundaries are marked with yellow paint. The painted boundary line trees are not Included Timber and are to be protected unless marked with orange paint. Yellow painted trees designating an interior Payment Unit boundary are only to be cut when all surrounding Payment Units have been paid.

2 - Timber Specifications

2.1 - Included Timber

2.1.3 - Cut tree marked unit(s) (12/08)

Within Payment Unit(s) 1, 2, 3, 4, & 5, all trees are designated for cutting when marked with orange paint above and below stump height, regardless of merchantability. In addition, all white ash trees are designated for cutting, regardless of merchantability. Per General Condition & Requirement 3.5 - Adjustment of Quantity, there will be no adjustment to contract volume, but unharvested white ash trees may not be considered a violation of General Condition & Requirement 8.3 - Uncompleted or Terminated Contract.

2.1.11 - Description of timber note (2/04)

Note that Misc. Species 1 = dead ash, which was cruised as pulpwood.

2.2 - Utilization

2.2.4 - Skidding length (2/14)

Skidding of lengths over 17 feet is permissible as long as the timber sale administrator approves the method and machinery used. If at any point damage exceeds specification 3.4.1, all of the remaining wood must be skid in lengths less than 17 feet.

3 - Payments

3.3 - Pre-measured Sales

3.3.4 - Dividing payment units (7/14)

Payment Unit(s) may be divided at the request of the Purchaser and upon approval of the Unit Manager. Dividing Payment Units is a contract modification which requires a Timber Sale Contract Supplement. There will be only one division per Payment Unit.

3.4 - Damaged Timber

3.4.1 - Damaged timber (6/14)

General Condition and Requirement 3.4 Damaged Timber, defines liquidated damages for undesignated live merchantable trees which are cut or injured.

No damage is acceptable to merchantable trees. Within the sale area, if more than 5% of trees (> 4.5" DBH) within a specified area of the sale are damaged, liquidated damages will be assessed for all trees damaged. Rates will be in accordance with General Condition and Requirement 3.4 Damaged Timber.

3.4.2 - Special Protection Trees (4/14)

The Purchaser shall not cut live or dead special protection trees within cutting units or clearings. Special protection trees are marked with green paint, as well as hemlock. If the Purchaser's operations have cut or damaged special protection trees through carelessness, the Purchaser shall pay \$100.00 as fixed, agreed and liquidated damages for each special protection tree cut or damaged. Such payment does not constitute ownership of the undesignated timber.

4 - Transportation

4.1 - Construction

4.1.3 - Slash and earthen piles (8/04)

Piles or windrows of earth along roads and landings that have been widened or constructed shall be leveled. Slash from road maintenance or construction, including stumps, shall be dispersed throughout the sale.

4.1.4 - Timber removed for construction (12/09)

Trees cut or damaged in the process of pre-approved road, landing or skid trail construction will be decked in an area separate from other Designated Timber and not removed until measured by the sale administrator. Payment will be made at the specified Purchase Unit Price.

4.1.6 - Road construction (1/09)

Construction of new roads or improvements of existing roads shall be done in such a way as to minimize the environmental and visual impacts. Merchantable trees shall be cut and utilized unless otherwise directed. Non-merchantable trees shall be severed and laid flat on the ground. Slash shall be scattered, and not left in windrows and kept a minimum of 10 feet back from the road edge. Stumps shall be set upright, not left on edge, and be moved at least 10 feet away from the road edge. Disturbed soil shall be feathered into the woods and not left in berms or windrows.

4.1.7 - Road closure (10/11)

All new roads built into the sale must be blocked to vehicle traffic upon completion of the sale. Overgrown roads that are reopened shall be considered new roads. In general, this will require constructing a four (4') foot high berm of stumps and logs covered with earth. These roads must be rendered impassable to cars and trucks. All stumps from road building and landing construction must be reserved to block any newly constructed roads upon completion of the sale. These stumps must be scattered along the road system to prohibit vehicular movement. The existing access road off of Harvey Road will also need to be closed near the gate, and the DNR will remove the gate. Contact the sale administrator for specific details of design and placement.

4.2 - Maintenance

4.2.1 - Hauling restriction (12/08)

Hauling may be restricted on forest roads by the Unit Manager or his/her representative. The restriction may occur during wet weather conditions, or potentially during large, organized recreational events on the trails.

4.2.4 - Grading (12/14)

For completion of the sale, state forest roads must be graded. In general, this will require a road grader or bull dozer to shape up the roads after forest products have been hauled off site. The grading equipment to be used must be approved by the Unit Manager or his/her representative.

4.2.5 - Two wheel drive condition (2/04)

All existing trail roads on and adjacent to the sale area must be passable by two-wheel drive traffic for the duration of the sale.

4.4 - Access

4.4.3 - Access gate (12/08)

The access gate at the end of Harvey Road may be kept open during harvest operations, but must be locked if there will be no activity for an extended period of time. When locking the gate, make sure no one is locked inside. Make arrangements with the sale administrator to unlock the gate when necessary.

5 - Operations

5.1 - Notification

5.1.1 - Pre-sale conference (10/11)

A pre-sale conference on site between the Purchaser and sale administrator is required prior to beginning any operations to determine landing, road locations, and other sale specifics. The Unit Manager or his/her representative must be contacted at least 5 days in advance to schedule the conference.

5.1.4 - Post-sale conference (6/11)

A post-sale conference on site between the Purchaser and sale administrator is required 5 days prior to the completion of active logging operations to determine clean-up and repair of landings, road edges, and the fulfillment of other contract specifications.

5.2 - Conduct of Operations

5.2.1 - Slash

5.2.1.8 - Slash height (12/08)

No slash or tree tops may exceed 36 inches in height.

5.2.1.13 - Dispose of slash as directed (12/05)

Slash is to be disposed of as directed by sale administrator.

5.2.2 - Hazard Trees/Snags

5.2.2.1 - Den trees (2/04)

Obvious hollow and/or den trees shall be protected and left standing unless they are a safety hazard.

5.2.3 - Operating Restrictions

5.2.3.3 - Bark slippage restriction (3/09)

Within Payment Unit(s) 1, 2, 3, 4, & 5, unless changed by written agreement, cutting and skidding are not permitted during the period of April 15 to July 15. This restriction is because of bark slippage.

5.2.29 - Shrub protection (9/07)

Do not cut or damage hawthorn, witch-hazel, dogwood or juneberry. These woody-shrub plants are highly beneficial to various wildlife species.

5.2.32 - Decking/landing restoration (9/13)

All decking and landing areas must have the surface area restored to a condition equal to or better than before. This is to ensure the proper regeneration of the stand. Wood debris, chips and "cookies" from trimmings must be removed or scattered away from landing and loading areas and may not be windrowed on the edge.

5.2.38 - No decking against live trees (2/04)

Cut products may not be decked against unmarked or designated leave trees.

5.2.40 - Pathway protection (10/10)

The Jordan Valley Pathway is a hiking trail and is shown on the Timber Sale Map. The access road inside the gate crosses this trail. In addition, Harvey Road is part of the North Country Trail. Do not cut trees or damage posts with blue pathway markers. Maintain a 20-foot wide slash, debris, and rut free zone daily, using the pathway as the centerline. Access can also be obtained off of Jordan River Road to Landslide Overlook, in order to avoid Harvey Road if issues with the pathway arise.

5.4 - Soil Protection

5.4.1 - Rutting restriction, general (7/16)

Operations are to cease immediately if equipment and weather conditions result in rutting of roads and/or skid trails which is 12 inches or greater in depth and 50 feet in length. The Unit Manager or his/her representative may restrict hauling and/or skidding if ruts exceed the specified depth. With the Unit Manager or his/her representative's approval, the Purchaser may return to the area when the risk of rutting has decreased.

5.4.2 - Skid trails (2/04)

Skid trails up and down slopes should be avoided. If however this is unavoidable, these trails will be left in a non-erodible condition using water bars, logs, and slash. Placing of slash on these skid trails while logging is ongoing may alleviate need for any further action. At the direction of the sale administrator, seed, fertilizer, and mulch may also be required.

5.8 - Protection of Endangered Species

5.8.5 - Protection of raptor nests (3/13)

All trees with raptor nests will be protected if found during harvesting operations. Notification will be made to the Unit Manager or his/her representative who will notify the Wildlife Biologist so an on-site evaluation and recommendation can be made, if necessary.

6 - Safety and Fire Prevention

6.2 - Signing

6.2.1 - Road posting (9/09)

The Purchaser is responsible for posting and maintaining caution signs on Harvey Road, which is also part of the North Country Trail, prior to beginning operations. The road must be posted at both ends of the road to warn of logging activity and truck traffic. Signs must be removed when harvest operations are suspended or completed. The Purchaser will provide these signs.

6.2.3 - Recreational trail posting (2/10)

The Purchaser is responsible for posting and maintaining caution signs on the Jordan Valley Pathway prior to beginning operations. The trail must be posted approximately 100 feet from both sides of the access road to warn of logging activity and truck traffic at both ends of the trail. Signs must be removed when harvest operations are suspended or completed. The Purchaser will provide these signs.

7 - Other Conditions

7.5 - Loss

7.5.1 - Deteriorating timber (7/09)

The sale area has received damage from the emerald ash borer and beech bark disease. The Purchaser should harvest the wood as soon as possible. The Department of Natural Resources is held free of responsibility of any further damage or deterioration due to delay in harvesting.



TIMBER SALE MAP

This information provided by authority of Part 525, 1994 PA 451, as amended.

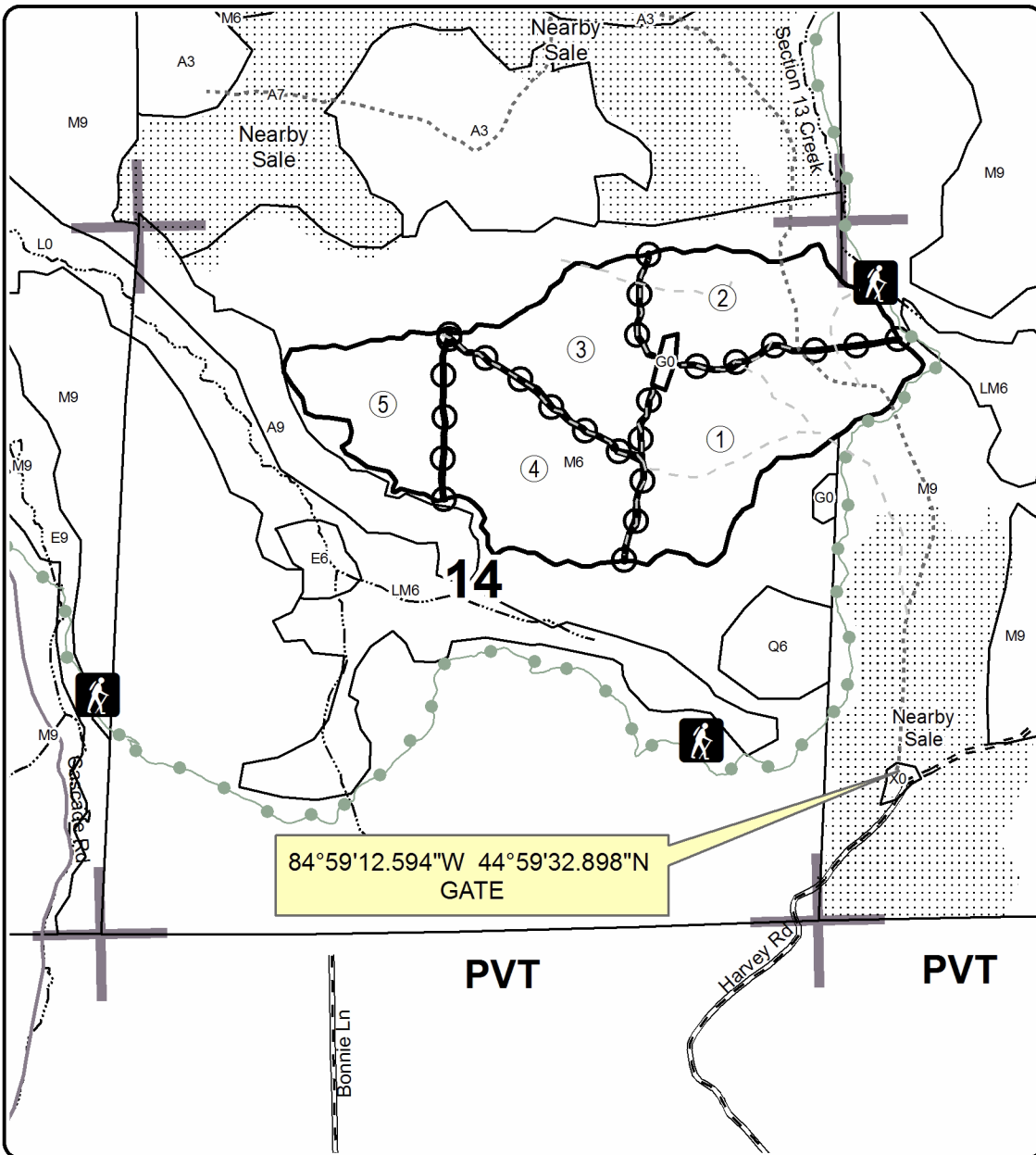
Forest Management Unit Gaylord (South)	County Antrim	Mapped By Gilner	Date 09/13/2016	Page 1	of 1
Township 30N	Range 06W	Section(s) and Subdivision(s) Section 14: NE4, E2NW, NWNW Section 13: W2NW	Scale 1:15,840		

Cover Type				Density	
A = Aspen	H = Hemlock	N = Marsh	U = Upland Brush	0 = Non Stocked	5 = Pole Timber Medium
B = Paper Birch	J = Jack Pine	O = Oak	UM = Upland Mixed	1 = Seedling Sapling Poor	6 = Pole Timber Well
C = Cedar	L = Lowland Brush	P = Lowland Poplar	V = Bog or Marsh	2 = Seedling Sapling Medium	7 = Saw Timber Poor
D = Tread Bog	LM = Lowland Mixed	Q = Mixed Swamp Conifer	W = White Pine	3 = Seedling Sapling Well	8 = Saw Timber Medium
E = Swamp Hdwoods	M = Mpl, Bch, Brch	R = Red Pine	X = Non Stocked	4 = Pole Timber Poor	9 = Saw Timber Well
F = Spruce Fir	MC = Mixed Conifer	S = Black Spruce	Z = Water		
G = Grass	MD = Mixed Deciduous	T = Tamarack			

Landslide Hardwoods 3

Compartment 057

157.9 Acres



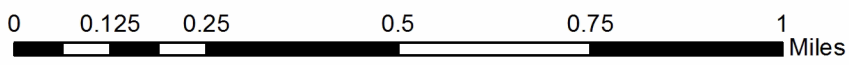
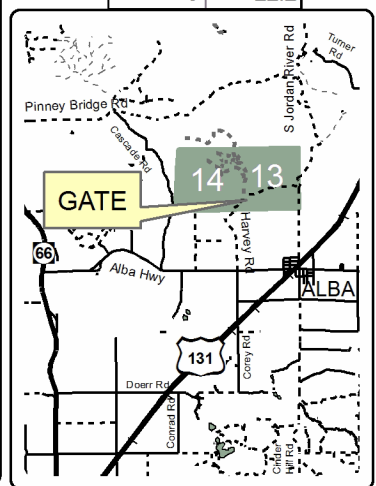
Legend

- Highway
- Paved Roads
- Gravel Roads
- Poor Dirt Roads
- Closed Roads
- Old Skid Trail
- Section Corners
- Recreational Trail
- Streams
- Nearby Timber Sale
- Stand Boundaries
- PU_Label

Sale Boundary

- Against State (Red)
- Payment Unit (Yellow)

PUNum	Acres
1	43.7
2	28.8
3	26.8
4	36.4
5	22.2



Locator Map
1:200,000

TIMBER SALE INFORMATION

Big Plan Hardwoods (52-026-16)

Antrim County (Advertised Price \$28,131.40)

SALE NOTE: Sale is located 3 miles from the nearest gravel road. Relatively flat terrain.

A timber sale contract for this lump sum, sealed bid timber sale will be awarded to the responsible bidder offering the highest sealed bid price. Bids must be at or above the following advertised price for each species:

<u>PRODUCTS & SPECIES</u>	<u>ESTIMATED UNITS*</u>	<u>ADVERTISED PRICE</u>
Sawtimber		
American Elm	0.70 MBF	\$ 70.00 / MBF
Basswood	67.30 MBF	\$ 61.00 / MBF
Beech	1.20 MBF	\$ 36.00 / MBF
Black Cherry	1.60 MBF	\$ 161.00 / MBF
Quaking Aspen	1.10 MBF	\$ 49.00 / MBF
Red Maple	7.10 MBF	\$ 145.00 / MBF
Sugar Maple	57.70 MBF	\$ 249.00 / MBF
Pulpwood		
Basswood	182.00 Cords	\$ 5.65 / Cord
Beech	1.00 Cords	\$ 17.50 / Cord
Misc. Species 1	84.00 Cords	\$ 3.50 / Cord
Mixed Hardwood	390.00 Cords	\$ 17.50 / Cord
Quaking Aspen	4.00 Cords	\$ 15.20 / Cord

* The total volume is statistically estimated within plus (+) or minus (-) 19.93 percent. The estimated units are final and not subject to adjustment. Prospective bidders are urged to examine this timber and to make their own estimates of quantity and quality.

BOND AND PAYMENT SCHEDULE:

1. A bond in the amount of \$3,000.00 to insure faithful performance of the conditions of the contract will be deposited by the successful bidder within 21 days of the sale award.
2. Cutting in any sale or unit without the required advance payment would be considered a trespass.
3. Total payment must be paid in advance or according to the following schedule:
 - (a) Ten percent (10%) of the sale value must be paid within 21 days of the sale award.
 - (b) The 10% down payment will be credited towards the first unit cut.
4. If no cutting takes place, the 10% down payment will not be refunded.
5. Operations on the contract issued will terminate on 09/30/2020.

Description of Timber by Payment Unit (PU)

PU	MARKET GROUP	PRODUCT	QUANTITY	UNIT	ACRES	ADVERTISE PRICE			
1	American Elm	Sawtimber	0.2	MBF	28.0	\$8,339.10			
	Basswood		19.9	MBF					
	Beech		0.4	MBF					
	Black Cherry		0.4	MBF					
	Quaking Aspen		0.3	MBF					
	Red Maple		2.1	MBF					
	Sugar Maple		17.1	MBF					
	Basswood		Pulpwood	54.0			Cords		
	Beech			1.0			Cords		
	Misc. Species 1			25.0			Cords		
	<i>White Ash</i>	25.0		<i>Cords</i>					
	Mixed Hardwood	116.0		Cords					
	<i>American Elm</i>	3.0		<i>Cords</i>					
	<i>Black Cherry</i>	1.0		<i>Cords</i>					
	<i>Ironwood</i>	12.0		<i>Cords</i>					
	<i>Red Maple</i>	2.0	<i>Cords</i>						
	<i>Sugar Maple</i>	98.0	<i>Cords</i>						
	Quaking Aspen	1.0	Cords						
2	American Elm	Sawtimber	0.2	MBF	27.4	\$8,148.45			
	Basswood		19.5	MBF					
	Beech		0.3	MBF					
	Black Cherry		0.5	MBF					
	Quaking Aspen		0.3	MBF					
	Red Maple		2.1	MBF					
	Sugar Maple		16.7	MBF					
	Basswood		Pulpwood	53.0			Cords		
	Misc. Species 1			24.0			Cords		
	<i>White Ash</i>			24.0			<i>Cords</i>		
	Mixed Hardwood	113.0		Cords					
	<i>American Elm</i>	3.0		<i>Cords</i>					
	<i>Ironwood</i>	12.0		<i>Cords</i>					
	<i>Red Maple</i>	3.0		<i>Cords</i>					
	<i>Sugar Maple</i>	95.0		<i>Cords</i>					
	Quaking Aspen	1.0	Cords						
	3	American Elm	Sawtimber	0.2			MBF	23.9	\$7,100.90
		Basswood		17.0			MBF		
Beech		0.3		MBF					
Black Cherry		0.4		MBF					
Quaking Aspen		0.3		MBF					
Red Maple		1.8		MBF					
Sugar Maple		14.6		MBF					
Basswood		Pulpwood		46.0	Cords				
Misc. Species 1				21.0	Cords				
<i>White Ash</i>				21.0	<i>Cords</i>				
Mixed Hardwood			98.0	Cords					
<i>American Elm</i>			2.0	<i>Cords</i>					
<i>Ironwood</i>			10.0	<i>Cords</i>					
<i>Red Maple</i>			3.0	<i>Cords</i>					
<i>Sugar Maple</i>			83.0	<i>Cords</i>					
Quaking Aspen		1.0	Cords						
4		American Elm	Sawtimber	0.1	MBF	15.3	\$4,542.95		
		Basswood		10.9	MBF				
	Beech	0.2		MBF					
	Black Cherry	0.3		MBF					
	Quaking Aspen	0.2		MBF					
	Red Maple	1.1		MBF					

Description of Timber by Payment Unit (PU), con't

PU	MARKET GROUP	PRODUCT	QUANTITY	UNIT	ACRES	ADVERTISE PRICE
4 con't	Sugar Maple	Sawtimber	9.3	MBF		
	Basswood	Pulpwood	29.0	Cords		
	Misc. Species 1		14.0	Cords		
	<i>White Ash</i>		14.0	<i>Cords</i>		
	Mixed Hardwood		63.0	Cords		
	<i>American Elm</i>		1.0	<i>Cords</i>		
	<i>Ironwood</i>		7.0	<i>Cords</i>		
	<i>Red Maple</i>		2.0	<i>Cords</i>		
	<i>Sugar Maple</i>		53.0	<i>Cords</i>		
	Quaking Aspen		1.0	Cords		
TOTAL:			136.7	MBF		
TOTAL:			661.0	Cords		

Sale Specific Conditions & Requirements

Sale Name: Big Plan Hardwoods

Sale Number: 52-026-16 Seq#: 1

1 - Sale Area

1.2 - Boundaries

1.2.1 - Painted boundaries (1/14)

The sale boundary and Payment Unit boundaries are marked and identified by red and yellow paint. Exterior sale boundary lines against state are marked with red paint. Interior Payment Unit boundaries are marked with yellow paint. The painted boundary line trees are not Included Timber and are to be protected unless marked with orange paint. Yellow painted trees designating an interior Payment Unit boundary are only to be cut when all surrounding Payment Units have been paid.

2 - Timber Specifications

2.1 - Included Timber

2.1.3 - Cut tree marked unit(s) (12/08)

Within Payment Unit(s) 1-4, all trees are designated for cutting when marked with orange paint above and below stump height, regardless of merchantability. In addition, all white ash trees are designated for cutting, regardless of merchantability. Per General Condition & Requirement 3.5 - Adjustment of Quantity, there will be no adjustment to contract volume, but unharvested white pine may not be considered a violation of General Condition & Requirement 8.3 - Uncompleted or Terminated Contract.

2.1.11 - Description of timber note (2/04)

Note that Misc. Species 1 = dead ash. Mixed hardwood pulp includes elm, red maple, and sugar maple.

2.2 - Utilization

2.2.5 - Limbed tree skidding (1/09)

The skidding of whole trees or tree segments with limbs attached is prohibited unless approved by the Unit Manager or his/her representative.

3 - Payments

3.3 - Pre-measured Sales

3.3.4 - Dividing payment units (7/14)

Payment Unit(s) 1-4 may be divided at the request of the Purchaser and upon approval of the Unit Manager. Dividing Payment Units is a contract modification which requires a Timber Sale Contract Supplement. There will be only one division per Payment Unit.

3.4 - Damaged Timber

3.4.1 - Damaged timber (6/14)

General Condition and Requirement 3.4 Damaged Timber, defines liquidated damages for undesignated live merchantable trees which are cut or injured. In addition, extreme care should be taken to avoid damage to tree seedlings and saplings.

Within the sale area, if more than 33% of the tree seedlings or saplings (1/4" to 4.5" DBH) within a specified portion of the sale area are damaged, liquidated damages will be assessed at \$500 per acre for all acreage within that specified portion of the sale area that was damaged.

No damage is acceptable to merchantable trees. Within the sale area, if more than 10% of trees (> 4.5" DBH) within a specified area of the sale are damaged, liquidated damages will be assessed for all trees damaged. Rates will be in accordance with General Condition and Requirement 3.4 Damaged Timber.

4 - Transportation

4.1 - Construction

4.1.3 - Slash and earthen piles (8/04)

Piles or windrows of earth along roads and landings that have been widened or constructed shall be leveled. Slash from road maintenance or construction, including stumps, shall be dispersed throughout the sale.

4.1.4 - Timber removed for construction (12/09)

Trees cut or damaged in the process of pre-approved road, landing or skid trail construction will be decked in an area separate from other Designated Timber and not removed until measured by the sale administrator. Payment will be made at the specified Purchase Unit Price.

4.1.6 - Road construction (1/09)

Construction of new roads or improvements of existing roads shall be done in such a way as to minimize the environmental and visual impacts. Merchantable trees shall be cut and utilized unless otherwise directed. Non-merchantable trees shall be severed and laid flat on the ground. Slash shall be scattered, and not left in windrows and kept a minimum of 10 feet back from the road edge. Stumps shall be set upright, not left on edge, and be moved at least 10 feet away from the road edge. Disturbed soil shall be feathered into the woods and not left in berms or windrows.

4.1.7 - Road closure (10/11)

All new roads built into the sale must be blocked to vehicle traffic upon completion of the sale. Overgrown roads that are reopened shall be considered new roads. In general, this will require constructing a four (4') foot high berm of stumps and logs covered with earth. Stumps and brush must be placed along the remainder of the trail. These roads must be rendered impassable to cars and trucks. All stumps from road building and landing construction must be reserved to block any newly constructed roads upon completion of the sale. These stumps must be scattered along the road system to prohibit vehicular movement. Contact the sale administrator for specific details of design and placement.

4.2 - Maintenance

4.2.4 - Grading (12/14)

For completion of the sale, state forest roads must be graded. In general, this will require a road grader or bull dozer to shape up the roads after forest products have been hauled off site. This includes cleaning of drainage areas, grading, crowning and filling with gravel, if necessary. The grading equipment to be used must be approved by the Unit Manager or his/her representative.

4.2.5 - Two wheel drive condition (2/04)

All existing trail roads on and adjacent to the sale area must be passable by two-wheel drive traffic for the duration of the sale.

5 - Operations

5.1 - Notification

5.1.1 - Pre-sale conference (10/11)

A pre-sale conference on site between the Purchaser and sale administrator is required prior to beginning any operations to determine landing and road locations. The Unit Manager or his/her representative must be contacted at least 10 days in advance to schedule the conference.

5.1.4 - Post-sale conference (6/11)

A post-sale conference on site between the Purchaser and sale administrator is required 5 days prior to the completion of active logging operations to determine clean-up and repair of landings, road edges, and the fulfillment of other contract specifications.

5.2 - Conduct of Operations

5.2.1 - Slash

5.2.1.8 - Slash height (12/08)

No slash or tree tops may exceed 24 inches in height.

5.2.2 - Hazard Trees/Snags

5.2.2.1 - Den trees (2/04)

Obvious hollow and/or den trees shall be protected and left standing unless they are a safety hazard.

5.2.3 - Operating Restrictions

5.2.3.3 - Bark slippage restriction (3/09)

Within Payment Unit(s) 1-4, unless changed by written agreement, cutting and skidding are not permitted during the period of April 15 to July 15. This restriction is because of bark slippage.

5.2.32 - Decking/landing restoration (9/13)

All decking and landing areas must have the surface area restored to a condition equal to or better than before. This is to ensure the proper regeneration of the stand. Wood debris, chips and "cookies" from trimmings must be removed or scattered away from landing and loading areas and may not be windrowed on the edge.

5.2.38 - No decking against live trees (2/04)

Cut products may not be decked against unmarked or designated leave trees.

5.2.41 - Snowmobile trail protection (9/11)

The snowmobile trail is shown on the Timber Sale Map. Do not cut or damage posts with orange trail markers or traffic control signs. If the trail is used, it must be maintained and restored to a condition equal to or better than before the sale. The road maintenance/restoration must be done prior to December 1. The snowmobile trail may not be used for hauling from December 1 to March 31, unless written permission is granted from the Unit Manager. If written permission is granted to use the trail road for hauling during the snowmobile season, then a snow covered base must be left on the trail. If the trail is used for hauling, it must be graded to the satisfaction of the Unit Manager or his/her representative prior to December 1st. The snowmobile trail may only be crossed at right angles. Maintain a 20 foot wide slash, debris, and rut free zone daily using the snowmobile trail as the centerline. No decking of forest products will be permitted along the snowmobile trail.

5.4 - Soil Protection

5.4.1 - Rutting restriction, general (7/16)

Operations are to cease immediately if equipment and weather conditions result in rutting of roads and/or skid trails which is 12 inches or greater in depth and 50 feet in length. The Unit Manager or his/her representative may restrict hauling and/or skidding if ruts exceed the specified depth. With the Unit Manager or his/her representative's approval, the Purchaser may return to the area when the risk of rutting has decreased.

5.4.2 - Skid trails (2/04)

Skid trails up and down slopes should be avoided. If however this is unavoidable, these trails will be left in a non-erodible condition using water bars, logs, and slash. Placing of slash on these skid trails while logging is ongoing may alleviate need for any further action. At the direction of the sale administrator, seed, fertilizer, and mulch may also be required.

5.8 - Protection of Endangered Species

5.8.3 - Red shoulder hawk or goshawk (2/16)

In the event that an active red shoulder hawk or goshawk nest is found, the contract may be amended to protect the nest site until the nest is determined to be inactive. The value of the trees in this excluded area will be refunded or credited to the Purchaser. The nest will be buffered with a five-chain radius (eight acre) protection area, centered on the nest tree, in which there will be no cutting or new roads constructed. Avoid human disturbance, including loading and skidding, in the protection area.

An additional zone of five chains (ten chains centered on the active nest tree) will be established in which there is no management activity from March 15 to July 15 (NLP). Limit biomass harvesting and chipping operations within this ten-chain zone, retain the maximum one-third of residues per the Woody Biomass Harvesting Guidelines (Michigan DNR 2010). Nests determined to be inactive will be protected with a one-chain no-harvest buffer.

5.8.5 - Protection of raptor nests (3/13)

All trees with raptor nests will be protected if found during harvesting operations. Notification will be made to the Unit Manager or his/her representative who will notify the Wildlife Biologist so an on-site evaluation and recommendation can be made, if necessary.

6 - Safety and Fire Prevention

6.2 - Signing

6.2.1 - Road posting (9/09)

The Purchaser is responsible for posting and maintaining caution signs on Jordan Valley Road prior to beginning operations. The road must be posted at appropriate distances from the sale area to warn of logging activity and truck traffic. Signs must be removed when harvest operations are suspended or completed. The Purchaser will provide these signs.



TIMBER SALE MAP

This information provided by authority of Part 525 1994 PA 451 as amended.

Sale Number

52-026

Year

16

Forest Management Unit Gaylord		County Antrim	Mapped By Zachary Crew		Date 09/13/2016	Page 1 of 1	
Township 30N, 31N	Range 06W	Section(s) and Subdivision(s) 2 - NE, E1/2NW; 1 - W1/2NW; 36 - S1/2SW			Scale 1:15,840		

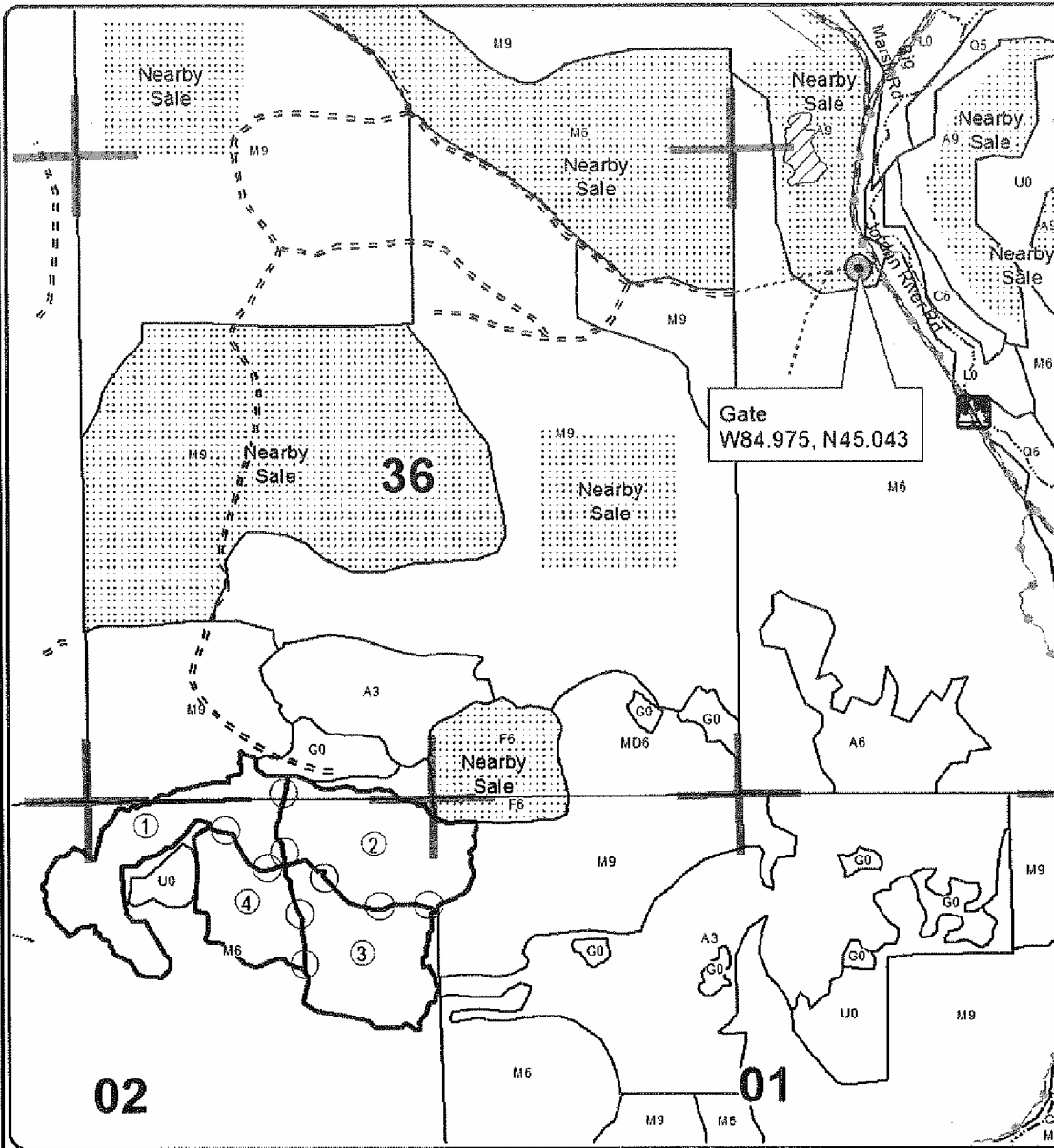
Cover Type				Density	
A = Aspen	H = Hemlock	N = Marsh	U = Upland Brush	0 = Non Stocked	5 = Pole Timber Medium
B = Paper Birch	J = Jack Pine	O = Oak	UB = Upland Mixed	1 = Seeding Sapling Poor	6 = Pole Timber Well
C = Cedar	L = Lowland Brush	P = Lowland Poplar	V = Bog or Marsh	2 = Seeding Sapling Medium	7 = Saw Timber Poor
D = Tree Bog	LM = Lowland Mixed	Q = Mixed Swamp Conifer	W = White Pine	3 = Seeding Sapling Well	8 = Saw Timber Medium
E = Swamp Hardwoods	M = Mpl. Ech, Brch	R = Red Pine	X = Non Stocked	4 = Pole Timber Poor	9 = Saw Timber Well
F = Spruce Fir	MC = Mixed Conifer	S = Black Spruce	Z = Water		
G = Grass	MD = Mixed Deciduous	T = Tamarack			

PU	Acres	PU	Acres
1	28	4	15.3
2	27.4		
3	23.9		

Big Plan Hardwoods

Compartment 057

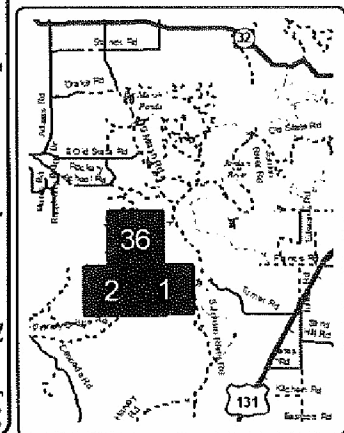
94.6 Acres



Legend

- Sale Boundary (Red)
- Unit Line (Yellow)
- Retention Area
- Stand Boundaries
- Section Corners
- Gravel Roads
- Poor Dirt Roads
- Closed Roads
- Recreational Trail
- Snowmobile Trail
- Streams

Locator Map
1:200,000



Hophornbeamaspen (52-018-16)
 ; Antrim COUNTY

In response to the notice of sale to be held 3:00 p.m. (local time) on August 10, 2017, I am hereby submitting my sealed bid (firm offer) for the following forest products to be cut. Bids for individual species must be at or above the advertised price. All non-responsive bid forms may be rejected.

<u>PRODUCTS & SPECIES</u>	<u>ESTIMATED VOLUME*</u>	<u>ADVERTISED PRICE</u>	<u>BID PRICE</u>
Sawtimber			
American Elm	6.50 MBF	\$ 111.00/MBF	\$ _____
Basswood	188.40 MBF	\$ 59.00/MBF	\$ _____
Mixed Aspen	82.80 MBF	\$ 47.00/MBF	\$ _____
Red Maple	51.00 MBF	\$ 139.00/MBF	\$ _____
Sugar Maple	215.10 MBF	\$ 238.00/MBF	\$ _____
Pulpwood			
Basswood	943.00 Cords	\$ 5.40/Cord	\$ _____
Mixed Aspen	434.00 Cords	\$ 14.55/Cord	\$ _____
Mixed Hardwood	192.00 Cords	\$ 16.75/Cord	\$ _____
Red Maple	395.00 Cords	\$ 16.75/Cord	\$ _____
Sugar Maple	1,137.00 Cords	\$ 16.75/Cord	\$ _____

*The volumes are statistically estimated within plus (+) or minus (-) 9.72 percent. These estimated volumes are final and not subject to adjustment. Prospective bidders are urged to examine this timber and to make their own estimates of quantity and quality.

I understand that any or all bids may be rejected. All bids must be signed and all bid items must be bid or the bid form may be rejected. I also understand that consideration and awarding a contract will be based upon my past performance and ability to complete the contract based upon equipment and staffing subject to my control.

FEDERAL ID: _____ or SOCIAL SECURITY NUMBER: _____
 Company or individual bidding: _____
 Company representative's name: _____
 Address: _____
 City: _____ State: _____ Zip: _____

IF AVAILABLE, PLEASE PLACE THE PERSONALIZED LABEL FROM YOUR PROSPECTUS IN THE ABOVE BOX.

Individual or company representative's signature: _____ Date: _____

Phone number : _____ Email (optional): _____

THE WINNING BIDDER MUST COMPLETE THE VERIFICATION OF WORKER'S DISABILITY COMPENSATION ACT COMPLIANCE (ON REVERSE SIDE IF DOUBLE SIDED) WITHIN 21 DAYS OF SALE AWARD DATE



FOR DEPARTMENT USE ONLY
Sale Number (XX - XXX - XX - XX)
Forest Management Unit:

TIMBER SALE VERIFICATION OF WORKER'S DISABILITY COMPENSATION ACT COMPLIANCE

*As required by Act 317, P.A. 1969 (Worker's Compensation) and
Part 5 of Act 451 of 1994, as amended.*

VERIFICATION OF WORKER'S DISABILITY COMPENSATION ACT COMPLIANCE

- This verification must be completed and submitted within 21 days of contract award and prior to the issuance of the timber sale contract.
- In addition, if boxes 2B or 2C are checked, then Notice of Exclusion or Certificate of Insurance must be submitted within twenty-one (21) days of the contract award and prior to the issuance of the timber sale contract.
- All information must be typed or printed except for written signatures.

Please Check Appropriate Categories:

1. My business is organized as (you **must** check one of the boxes below):
 - A. Sole Proprietorship (individual)
 - B. Partnership
 - C. Corporation
2. You **must** check one of the boxes below:
 - A. I certify my business is a sole proprietorship and it has no employees but the sole proprietor. I am not subject to the Worker's Compensation Laws.
 - B. I certify my business has satisfied its obligation to the Worker's Compensation Act through the use of an approved Notice of Exclusion (BWC-337, Rev. 5/96). I will provide a copy of the Notice of Exclusion within 21 days of the contract award. (For questions or a copy of the BWC-337, please call the Worker's Compensation Bureau at 517-322-1195).
 - C. I certify my business has a Worker's Compensation Policy. I will provide an original Certificate of Insurance within twenty-one (21) days of the contract award.
3. If you have checked item 2(A) or 2(B), you **must** indicate the number of **both** full-time and part-time employees, other than yourself, including family members and active partners (if none, you must enter "0").

_____ Full-time Employees

_____ Part-time Employees

Name of Business		Federal ID (or) Social Security No.	
Address		Telephone ()	
City	State	ZIP	

I hereby certify that the above information is true and correct. I agree to notify the Michigan DNR of any changes that occur in factors affecting my coverage during any of my present and future operations.

Signature of Owner or Authorized Representative

Title

Date

Please complete the "SEALED BID" information on the next page

Landslide Hardwoods 3 (52-022-16)
 ; Antrim COUNTY

In response to the notice of sale to be held 3:00 p.m. (local time) on August 10, 2017, I am hereby submitting my sealed bid (firm offer) for the following forest products to be cut. Bids for individual species must be at or above the advertised price. All non-responsive bid forms may be rejected.

<u>PRODUCTS & SPECIES</u>	<u>ESTIMATED VOLUME*</u>	<u>ADVERTISED PRICE</u>	<u>BID PRICE</u>
Sawtimber			
American Elm	0.10 MBF	\$ 141.00/MBF	\$ _____
B. T. Aspen	0.60 MBF	\$ 59.00/MBF	\$ _____
Basswood	104.00 MBF	\$ 74.00/MBF	\$ _____
Beech	5.20 MBF	\$ 44.00/MBF	\$ _____
Black Cherry	9.70 MBF	\$ 195.00/MBF	\$ _____
Red Maple	48.60 MBF	\$ 176.00/MBF	\$ _____
Sugar Maple	39.80 MBF	\$ 302.00/MBF	\$ _____
Yellow Birch	0.50 MBF	\$ 178.00/MBF	\$ _____
Pulpwood			
B. T. Aspen	1.00 Cords	\$ 18.45/Cord	\$ _____
Basswood	237.00 Cords	\$ 6.85/Cord	\$ _____
Misc. Species 1	258.00 Cords	\$ 4.25/Cord	\$ _____
Mixed Hardwood	612.00 Cords	\$ 21.25/Cord	\$ _____

*The volumes are statistically estimated within plus (+) or minus (-) 19.39 percent. These estimated volumes are final and not subject to adjustment. Prospective bidders are urged to examine this timber and to make their own estimates of quantity and quality.

I understand that any or all bids may be rejected. All bids must be signed and all bid items must be bid or the bid form may be rejected. I also understand that consideration and awarding a contract will be based upon my past performance and ability to complete the contract based upon equipment and staffing subject to my control.

FEDERAL ID: _____ or SOCIAL SECURITY NUMBER: _____
 Company or individual bidding: _____
 Company representative's name: _____
 Address: _____
 City: _____ State: _____ Zip: _____

IF AVAILABLE, PLEASE PLACE THE PERSONALIZED LABEL FROM YOUR PROSPECTUS IN THE ABOVE BOX.

Individual or company representative's signature: _____ Date: _____

Phone number : _____ Email (optional): _____

THE WINNING BIDDER MUST COMPLETE THE VERIFICATION OF WORKER'S DISABILITY COMPENSATION ACT COMPLIANCE (ON REVERSE SIDE IF DOUBLE SIDED) WITHIN 21 DAYS OF SALE AWARD DATE



FOR DEPARTMENT USE ONLY
Sale Number (XX - XXX - XX - XX)
Forest Management Unit:

TIMBER SALE VERIFICATION OF WORKER'S DISABILITY COMPENSATION ACT COMPLIANCE

*As required by Act 317, P.A. 1969 (Worker's Compensation) and
Part 5 of Act 451 of 1994, as amended.*

VERIFICATION OF WORKER'S DISABILITY COMPENSATION ACT COMPLIANCE

- This verification must be completed and submitted within 21 days of contract award and prior to the issuance of the timber sale contract.
- In addition, if boxes 2B or 2C are checked, then Notice of Exclusion or Certificate of Insurance must be submitted within twenty-one (21) days of the contract award and prior to the issuance of the timber sale contract.
- All information must be typed or printed except for written signatures.

Please Check Appropriate Categories:

1. My business is organized as (you **must** check one of the boxes below):
 - A. Sole Proprietorship (individual)
 - B. Partnership
 - C. Corporation
2. You **must** check one of the boxes below:
 - A. I certify my business is a sole proprietorship and it has no employees but the sole proprietor. I am not subject to the Worker's Compensation Laws.
 - B. I certify my business has satisfied its obligation to the Worker's Compensation Act through the use of an approved Notice of Exclusion (BWC-337, Rev. 5/96). I will provide a copy of the Notice of Exclusion within 21 days of the contract award. (For questions or a copy of the BWC-337, please call the Worker's Compensation Bureau at 517-322-1195).
 - C. I certify my business has a Worker's Compensation Policy. I will provide an original Certificate of Insurance within twenty-one (21) days of the contract award.
3. If you have checked item 2(A) or 2(B), you **must** indicate the number of **both** full-time and part-time employees, other than yourself, including family members and active partners (if none, you must enter "0").

_____ Full-time Employees

_____ Part-time Employees

Name of Business		Federal ID (or) Social Security No.	
Address		Telephone ()	
City	State	ZIP	

I hereby certify that the above information is true and correct. I agree to notify the Michigan DNR of any changes that occur in factors affecting my coverage during any of my present and future operations.

Signature of Owner or Authorized Representative

Title

Date

Please complete the "SEALED BID" information on the next page

Big Plan Hardwoods (52-026-16)
 ; Antrim COUNTY

In response to the notice of sale to be held 3:00 p.m. (local time) on August 10, 2017, I am hereby submitting my sealed bid (firm offer) for the following forest products to be cut. Bids for individual species must be at or above the advertised price. All non-responsive bid forms may be rejected.

<u>PRODUCTS & SPECIES</u>	<u>ESTIMATED VOLUME*</u>	<u>ADVERTISED PRICE</u>	<u>BID PRICE</u>
Sawtimber			
American Elm	0.70 MBF	\$ 70.00/MBF	\$ _____
Basswood	67.30 MBF	\$ 61.00/MBF	\$ _____
Beech	1.20 MBF	\$ 36.00/MBF	\$ _____
Black Cherry	1.60 MBF	\$ 161.00/MBF	\$ _____
Quaking Aspen	1.10 MBF	\$ 49.00/MBF	\$ _____
Red Maple	7.10 MBF	\$ 145.00/MBF	\$ _____
Sugar Maple	57.70 MBF	\$ 249.00/MBF	\$ _____
Pulpwood			
Basswood	182.00 Cords	\$ 5.65/Cord	\$ _____
Beech	1.00 Cords	\$ 17.50/Cord	\$ _____
Misc. Species 1	84.00 Cords	\$ 3.50/Cord	\$ _____
Mixed Hardwood	390.00 Cords	\$ 17.50/Cord	\$ _____
Quaking Aspen	4.00 Cords	\$ 15.20/Cord	\$ _____

*The volumes are statistically estimated within plus (+) or minus (-) 19.93 percent. These estimated volumes are final and not subject to adjustment. Prospective bidders are urged to examine this timber and to make their own estimates of quantity and quality.

I understand that any or all bids may be rejected. All bids must be signed and all bid items must be bid or the bid form may be rejected. I also understand that consideration and awarding a contract will be based upon my past performance and ability to complete the contract based upon equipment and staffing subject to my control.

FEDERAL ID: ____ - ____ - ____ or SOCIAL SECURITY NUMBER: ____ - ____ - ____
 Company or individual bidding: _____
 Company representative's name: _____
 Address: _____
 City: _____ State: _____ Zip: _____

IF AVAILABLE, PLEASE PLACE THE PERSONALIZED LABEL FROM YOUR PROSPECTUS IN THE ABOVE BOX.

Individual or company representative's signature: _____ Date: _____

Phone number : _____ Email (optional): _____

THE WINNING BIDDER MUST COMPLETE THE VERIFICATION OF WORKER'S DISABILITY COMPENSATION ACT COMPLIANCE (ON REVERSE SIDE IF DOUBLE SIDED) WITHIN 21 DAYS OF SALE AWARD DATE



FOR DEPARTMENT USE ONLY
Sale Number (XX - XXX - XX - XX)
Forest Management Unit:

TIMBER SALE VERIFICATION OF WORKER'S DISABILITY COMPENSATION ACT COMPLIANCE

*As required by Act 317, P.A. 1969 (Worker's Compensation) and
Part 5 of Act 451 of 1994, as amended.*

VERIFICATION OF WORKER'S DISABILITY COMPENSATION ACT COMPLIANCE

- This verification must be completed and submitted within 21 days of contract award and prior to the issuance of the timber sale contract.
- In addition, if boxes 2B or 2C are checked, then Notice of Exclusion or Certificate of Insurance must be submitted within twenty-one (21) days of the contract award and prior to the issuance of the timber sale contract.
- All information must be typed or printed except for written signatures.

Please Check Appropriate Categories:

1. My business is organized as (you **must** check one of the boxes below):
 - A. Sole Proprietorship (individual)
 - B. Partnership
 - C. Corporation
2. You **must** check one of the boxes below:
 - A. I certify my business is a sole proprietorship and it has no employees but the sole proprietor. I am not subject to the Worker's Compensation Laws.
 - B. I certify my business has satisfied its obligation to the Worker's Compensation Act through the use of an approved Notice of Exclusion (BWC-337, Rev. 5/96). I will provide a copy of the Notice of Exclusion within 21 days of the contract award. (For questions or a copy of the BWC-337, please call the Worker's Compensation Bureau at 517-322-1195).
 - C. I certify my business has a Worker's Compensation Policy. I will provide an original Certificate of Insurance within twenty-one (21) days of the contract award.
3. If you have checked item 2(A) or 2(B), you **must** indicate the number of **both** full-time and part-time employees, other than yourself, including family members and active partners (if none, you must enter "0").

_____ Full-time Employees _____ Part-time Employees

Name of Business		Federal ID (or) Social Security No.	
Address		Telephone ()	
City	State	ZIP	

I hereby certify that the above information is true and correct. I agree to notify the Michigan DNR of any changes that occur in factors affecting my coverage during any of my present and future operations.

Signature of Owner or Authorized Representative

_____ _____
Title Date

Please complete the "SEALED BID" information on the next page