



**DEPARTMENT OF NATURAL RESOURCES  
STATE OF MICHIGAN**

**TIMBER SALE PROSPECTUS #5751**

SCHEDULED SALE DATE AND TIME: 4:00 p.m. (local time) on December 12, 2016.

LOCATION: KALKASKA FIELD OFFICE, 2089 N BIRCH ST, KALKASKA, MI 49646.

PROSPECTUS NOTE: The bidder is advised to inspect the sale area and review the location, estimated volumes, operating costs and contract terms of proposed sales. Please be aware that some landowners may request 60 days or more notice for access across their land.

Notice is hereby given that bids will be received by the Unit Manager, TRAVERSE CITY MANAGEMENT UNIT, for certain timber on the following described lands:

Deja Vu Hardwoods (61-102-16)

Kalkaska County, Advertised Price \$154,369.10, 424.6 Acres, Hardwood, Sugar Maple.

SALE NOTE: Please note that operations on this sale are not permitted from April 15 to July 15 due to bark slippage and oak wilt. There will be NO flexibility on this restriction.

A recreation site such as a trail, pathway, or campground is within the sale area or the vicinity. Certain restrictions/specifications may be applicable including time restrictions.

119 Epic Beast (61-119-16)

Kalkaska County, Advertised Price \$328,458.20, 418.8 Acres, Hardwood, Sugar Maple.

SALE NOTE: Class A access, nice black cherry, red maple and sugar maple logs and LOTS of hardwood pulp! Work needs to be performed during good frozen ground conditions or during a very dry summer, work will NOT be allowed during wet or thawing ground conditions.

The Hornets Nest (61-144-16)

Kalkaska County, Advertised Price \$18,439.50, 32.9 Acres, Hardwood, Spruce/Fir/Tamarack.

SALE NOTE: A recreation site such as a trail, pathway, or campground is within the sale area or the vicinity. Certain restrictions/specifications may be applicable including time restrictions.

WWGD Red Pine (61-157-16)

Kalkaska County, Advertised Price \$152,240.55, 99.8 Acres, Red Pine, White Pine.

Occidental Mix (61-158-16)

Kalkaska County, Advertised Price \$133,035.40, 191.9 Acres, Hardwood, Red Pine.

SALE NOTE: A recreation site such as a trail, pathway, or campground is within the sale area or the vicinity. Certain restrictions/specifications may be applicable including time restrictions.

Down Stream Mix (61-162-16)

Kalkaska County, Advertised Price \$73,904.25, 125.8 Acres, Hardwood, White Pine.

SALE NOTE: This timber sale contains areas of wet ground. Please take this into consideration when bidding on the sale.

## BID INSTRUCTIONS (VER. 09/02/2016):

### 1. Scheduled Bid Location, Date, and Time (2/11)

Bids must be received by the Unit Manager, KALKASKA OFFICE, 2089 N BIRCH ST, KALKASKA, MI 49646, no later than 4:00 p.m. (local time) on December 12, 2016. For further information concerning this sale, contact David Lemmien at 231-922-5280 extension 6840.

### 2. Bidder's Qualifications (5/16)

Purchaser shall obtain workers compensation insurance to cover claims under Michigan's Worker's Disability Compensation Act of 1969 or similar employee benefit act of any other state applicable to an employee. If all or part of a timber sale was prepared by a private contractor, the contractor and that contractor's company are not permitted to bid on the timber sale contract. Bids will not be accepted from individuals or companies appearing on the DNR/FRD No-Bid List. This list contains the names of purchasers who previously failed to execute a contract within 21-days or who have a history of poor performance.

### 3. Preparation of Sealed Bids (5/16)

Bid Forms may be completed online thru Michigan DNR Timber Sale Online Bidding (OLB) at [www.michigan.gov/timberbidding](http://www.michigan.gov/timberbidding) or by completing the hardcopy Bid Form found in the Timber Sale Prospectus. Hardcopy Bid Forms shall be manually signed in ink. Registration in OLB is considered your 'signature' for all bids submitted thru that system. Bid prices must be entered for each species and product in the Bid Price column for all material subject to bidding and all fill-in blanks must be completed. If erasures or other changes appear on the hardcopy Bid Form, each erasure or change must be initialed by the person signing the bid.

### 4. Submission of Sealed Bids (5/16)

Bid forms may be obtained from the Unit Manager or thru OLB. Bids may be submitted hardcopy or thru OLB. All hardcopy bids must be submitted on the bid form and in an envelope clearly identified as described in this section. NOTE: Only one bid form per bid envelope. Sealed bids must be submitted to the Unit office designated in the prospectus and must be submitted at or prior to the time established in the prospectus. The envelope should show on the outside (a) the sale name or number and (b) the date and time of bid opening, as shown in the prospectus. Bids received after the time specified in the sale prospectus are late bids and will be rejected.

It is possible for a bidder to submit multiple bids on a single sale. For example, a bid may be submitted hardcopy and a bid may be submitted thru OLB. Or, two bidders from the same company could both submit bids on the same sale. If this were to happen, the State would accept all bids received and award the contract accordingly. All bidding and contractual requirements would apply to all bids received.

### 5. Public Opening of Sealed Bids (7/16)

If conditions permit, the sealed bids will be publicly opened and posted at the time and place set in the prospectus.

If a bidder, present at a bid opening, has submitted bids on more than one sale, that bidder may withdraw their unopened bid envelopes or announce the withdrawal of their online bid after being declared the successful bidder on one sale.

### 6. Award of Contract (1/11)

Award of the contract will be made to the Bidder whose bid, conforming to the prospectus, is most advantageous to the State of Michigan on the basis of total value at rates bid for the estimated quantities. The State reserves the right to reject any bid or waive any minor irregularity in bids received. A written award mailed (or otherwise furnished) to the successful Bidder shall be deemed to result in a binding contract without further action by either party.

### 7. Down Payment (1/11)

The Bidder to whom award is made must make a down payment within 21 days of the sale award. The amount of the down payment will be calculated as shown in the Bond and Payment Schedule of this prospectus. Only cash may be used to meet this requirement.

### 8. Performance Security (1/11)

As guarantee of faithful performance, a cash bond, certificate of deposit, surety bond or irrevocable letter of credit (LOC) is required within 21 days of the sale award. The amount of the performance security is shown in the Bond and

Payment Schedule of this prospectus. If an LOC or surety is used, the coverage must extend for at least 6 months beyond the contract expiration.

#### 9. Timber Sale Contract (9/14)

Additional conditions and requirements common to all timber sales are listed on the timber sale contract (R4031) and are available on line at [www.michigan.gov/timber](http://www.michigan.gov/timber). Contact the Unit Manager for additional information or a sample contract. Within 21 days of the date of the award letter, the bidder must sign the contract and provide the required down payment, performance security, and verification of worker's disability compensation. The down payment and performance security shall be in accordance with the provisions of the timber sale contract, in the sums stated in this prospectus. If these actions are not taken, then the Bidder, the Bidder's corporation, and the corporation's principals may not be permitted to bid on State timber sales for a period of 1 year. In addition, the Bidder certifies that if awarded this contract, the Bidder will complete the timber sale contract in accordance with its terms and any modifications thereof including requirements to purchase, cut, and remove the included timber by the expiration date.

#### 10. Disclaimer of Estimates and Bidder's Warranty of Inspection (7/16)

Before submitting this bid, the Bidder is advised and cautioned to inspect the sale area, review the requirements of the sale contract, and take other steps as may be reasonably necessary to ascertain the location, estimated volumes, construction estimates, and operating costs of the proposed sale. Failure to do so will not relieve the Bidder from responsibility for completing the contract.

The Bidder warrants that this bid is submitted solely on the basis of the Bidder's examination and inspection of the quality and quantity of the timber offered for sale and the Bidder's opinion of the value thereof and the costs of recovery. No reliance should be placed on the State of Michigan's estimates of timber quality, quantity or costs of recovery. Bidder further acknowledges that the State of Michigan: (i) expressly disclaims any warranty of fitness of timber for any purpose; (ii) offers this timber as is without any warranty of quality (merchantability) or quantity and (iii) expressly disclaims any warranty as to the quantity or quality of timber sold.

#### 11. Certification and Chain-of-Custody (10/14)

Unless otherwise indicated in the contract under section 7 – Other Conditions of the Sale Specific Conditions & Requirements, the area encompassed by this timber sale is certified to the standards of the Forest Stewardship Council (FSC) - Certificate #SCS-FM/COC-00090N and the Sustainable Forestry Initiative (SFI) - Certificate # NSF-SFIS-5Y031-SF5. Forest products from this sale may be delivered to the mill as "FSC 100% and / or SFI certified" as long as the contractor hauling the forest products is chain-of-custody (COC) certified or covered under a COC certificate from the destination mill. The purchaser is responsible for maintaining COC after leaving the sale area.

#### 12. Good Neighbor Authority (GNA) Requirements (7/16)

If the name of this timber sales contains the acronym GNA, it is authorized by the Good Neighbor Authority (GNA) and covered by various agreements between the U.S. Forest Service and the State. The timber sale occurs on federal land and the following conditions apply:

GNA contracts on US Forest Service land will not be awarded to purchasers on the Federal list of excluded parties. The System for Award Management (SAM) will be checked for active excluded parties prior to award of contract. In addition, the Bidder to whom award is made must complete an Assurance Regarding Felony Conviction or Tax Delinquent Status for Corporate Applicants (AD-3031).

#### 13. Good Neighbor Authority (GNA) Requirements, con't (9/16)

Bidder certifies, by signing this bid form, that to the best of Bidder's knowledge that the following representations are accurate and complete.

- a. That the Bidder and its principals are not presently debarred, suspended, proposed for debarment, declared ineligible, or voluntary excluded from timber sales (covered transactions) by any Federal department or agency.
- b. That the Bidder and its principals have not within a 3-year period preceding this bid been convicted of or had a civil judgment rendered against them for commission of fraud or a criminal offense in connection with obtaining, attempting to obtain, or performing a public (Federal, State, or local) transaction or contract under a public transaction; violation of Federal or State antitrust statutes or commission of embezzlement, theft, forgery, bribery, falsification or destruction of records, making false statements, or receiving stolen property.

c. That the Bidder and its principals are not presently indicted for or otherwise criminally or civilly charged by a governmental entity (Federal, State, or local) with commission of any of the offenses enumerated in paragraph b of this certification.

d. That the Bidder and its principals have not within a 3-year period preceding this bid had one or more public transactions (Federal, State, or local) terminated for breach or default of a timber or forest product contract.

Bidders that cannot certify this requirement, in whole or in part, shall submit an explanation with their bid.

KEITH CREAGH

Director

# TIMBER SALE INFORMATION

## Deja Vu Hardwoods (61-102-16)

Kalkaska County (Advertised Price \$154,369.10)

SALE NOTE: Please note that operations on this sale are not permitted from April 15 to July 15 due to bark slippage and oak wilt. There will be NO flexibility on this restriction.

A recreation site such as a trail, pathway, or campground is within the sale area or the vicinity. Certain restrictions/specifications may be applicable including time restrictions.

A timber sale contract for this lump sum, sealed bid timber sale will be awarded to the responsible bidder offering the highest sealed bid price. Bids must be at or above the following advertised price for each species:

<u>PRODUCTS &amp; SPECIES</u>	<u>ESTIMATED UNITS*</u>		<u>ADVERTISED PRICE</u>
<b>Sawtimber</b>			
Beech	113.40	MBF	\$ 92.00 / MBF
Black Cherry	3.60	MBF	\$ 260.00 / MBF
Paper Birch	2.00	MBF	\$ 45.00 / MBF
Red Maple	152.40	MBF	\$ 159.00 / MBF
Red Oak	76.00	MBF	\$ 228.00 / MBF
Sugar Maple	227.60	MBF	\$ 284.00 / MBF
White Pine	0.40	MBF	\$ 86.00 / MBF
<b>Pulpwood</b>			
Beech	537.00	Cords	\$ 21.05 / Cord
Misc. Species 1	42.00	Cords	\$ 3.75 / Cord
Mixed Hardwood	1,141.00	Cords	\$ 21.05 / Cord
Red Oak	60.00	Cords	\$ 15.60 / Cord
White Pine	15.00	Cords	\$ 17.50 / Cord

\* The total volume is statistically estimated within plus (+) or minus (-) 18.22 percent. The estimated units are final and not subject to adjustment. Prospective bidders are urged to examine this timber and to make their own estimates of quantity and quality.

**BOND AND PAYMENT SCHEDULE:**

1. A bond in the amount of \$15,437.00 to insure faithful performance of the conditions of the contract will be deposited by the successful bidder within 21 days of the sale award.
2. Cutting in any sale or unit without the required advance payment would be considered a trespass.
3. Total payment must be paid in advance or according to the following schedule:
  - (a) Ten percent (10%) of the sale value must be paid within 21 days of the sale award.
  - (b) The 10% down payment will be credited towards the first unit cut.
4. If no cutting takes place, the 10% down payment will not be refunded.
5. Operations on the contract issued will terminate on 12/31/2019.

**Description of Timber by Payment Unit (PU)**

PU	MARKET GROUP	PRODUCT	QUANTITY	UNIT	ACRES	ADVERTISE PRICE
1	Beech Black Cherry Paper Birch Red Maple Red Oak Sugar Maple	Sawtimber	11.8	MBF	44.1	\$16,045.50
			0.4	MBF		
			0.2	MBF		
			15.8	MBF		
			7.9	MBF		
			23.6	MBF		
		Pulpwood	Beech	56.0	Cords	
			Misc. Species 1	5.0	Cords	
			<i>Misc. Species 1</i>	1.0	<i>Cords</i>	
			<i>Misc. Species 2</i>	4.0	<i>Cords</i>	
			Mixed Hardwood	119.0	Cords	
			<i>Black Cherry</i>	4.0	<i>Cords</i>	
			<i>Ironwood</i>	2.0	<i>Cords</i>	
			<i>Paper Birch</i>	1.0	<i>Cords</i>	
			<i>Red Maple</i>	34.0	<i>Cords</i>	
			<i>Sugar Maple</i>	78.0	<i>Cords</i>	
			Red Oak	6.0	Cords	
White Pine	2.0	Cords				
2	Beech Black Cherry Paper Birch Red Maple Red Oak Sugar Maple White Pine	Sawtimber	14.4	MBF	54.1	\$19,704.20
			0.5	MBF		
			0.3	MBF		
			19.5	MBF		
			9.7	MBF		
			29.0	MBF		
		Pulpwood	White Pine	0.3	MBF	
			Beech	68.0	Cords	
			Misc. Species 1	4.0	Cords	
			<i>Misc. Species 2</i>	4.0	<i>Cords</i>	
			Mixed Hardwood	146.0	Cords	
			<i>Black Cherry</i>	5.0	<i>Cords</i>	
			<i>Ironwood</i>	2.0	<i>Cords</i>	
			<i>Paper Birch</i>	3.0	<i>Cords</i>	
			<i>Red Maple</i>	42.0	<i>Cords</i>	
			<i>Sugar Maple</i>	94.0	<i>Cords</i>	
			Red Oak	8.0	Cords	
White Pine	1.0	Cords				
3	Beech Black Cherry Paper Birch Red Maple Red Oak Sugar Maple	Sawtimber	13.1	MBF	49.1	\$17,817.80
			0.4	MBF		
			0.2	MBF		
			17.6	MBF		
			8.8	MBF		
			26.3	MBF		
		Pulpwood	Beech	62.0	Cords	
			Misc. Species 1	5.0	Cords	
			<i>Misc. Species 1</i>	1.0	<i>Cords</i>	
			<i>Misc. Species 2</i>	4.0	<i>Cords</i>	
			Mixed Hardwood	131.0	Cords	
			<i>Black Cherry</i>	5.0	<i>Cords</i>	
			<i>Ironwood</i>	2.0	<i>Cords</i>	
			<i>Paper Birch</i>	1.0	<i>Cords</i>	
			<i>Red Maple</i>	37.0	<i>Cords</i>	
			<i>Sugar Maple</i>	86.0	<i>Cords</i>	
			Red Oak	7.0	Cords	
White Pine	2.0	Cords				
4	Beech Black Cherry	Sawtimber	9.3	MBF	34.8	\$12,648.85
			0.3	MBF		

Description of Timber by Payment Unit (PU), con't

PU	MARKET GROUP	PRODUCT	QUANTITY	UNIT	ACRES	ADVERTISE PRICE	
4 con't	Paper Birch	Sawtimber	0.2	MBF			
	Red Maple		12.5	MBF			
	Red Oak		6.2	MBF			
	Sugar Maple		18.7	MBF			
	Beech		Pulpwood	44.0			Cords
	Misc. Species 1			4.0			Cords
	<i>Misc. Species 1</i>			1.0			<i>Cords</i>
	<i>Misc. Species 2</i>			3.0			<i>Cords</i>
	Mixed Hardwood			93.0			Cords
	<i>Black Cherry</i>			3.0			<i>Cords</i>
	<i>Ironwood</i>			1.0			<i>Cords</i>
	<i>Paper Birch</i>			1.0			<i>Cords</i>
	<i>Red Maple</i>			27.0			<i>Cords</i>
	<i>Sugar Maple</i>			61.0			<i>Cords</i>
	Red Oak		5.0	Cords			
	White Pine		1.0	Cords			
5	Beech	Sawtimber	4.9	MBF	18.5	\$6,750.20	
	Black Cherry		0.2	MBF			
	Paper Birch		0.1	MBF			
	Red Maple		6.6	MBF			
	Red Oak		3.3	MBF			
	Sugar Maple		9.9	MBF			
	Beech		Pulpwood	23.0			Cords
	Misc. Species 1			2.0			Cords
	<i>Misc. Species 2</i>			2.0			<i>Cords</i>
	Mixed Hardwood			51.0			Cords
	<i>Black Cherry</i>			2.0			<i>Cords</i>
	<i>Ironwood</i>			1.0			<i>Cords</i>
	<i>Paper Birch</i>			1.0			<i>Cords</i>
	<i>Red Maple</i>			14.0			<i>Cords</i>
	<i>Sugar Maple</i>			33.0			<i>Cords</i>
	Red Oak			3.0			Cords
White Pine	1.0	Cords					
6	Beech	Sawtimber	10.3	MBF	38.6	\$14,006.80	
	Black Cherry		0.3	MBF			
	Paper Birch		0.2	MBF			
	Red Maple		13.9	MBF			
	Red Oak		6.9	MBF			
	Sugar Maple		20.7	MBF			
	Beech		Pulpwood	49.0			Cords
	Misc. Species 1			4.0			Cords
	<i>Misc. Species 1</i>			1.0			<i>Cords</i>
	<i>Misc. Species 2</i>			3.0			<i>Cords</i>
	Mixed Hardwood			103.0			Cords
	<i>Black Cherry</i>			4.0			<i>Cords</i>
	<i>Ironwood</i>			1.0			<i>Cords</i>
	<i>Paper Birch</i>			1.0			<i>Cords</i>
	<i>Red Maple</i>			29.0			<i>Cords</i>
	<i>Sugar Maple</i>			68.0			<i>Cords</i>
Red Oak	5.0	Cords					
White Pine	1.0	Cords					
7	Beech	Sawtimber	9.7	MBF	36.3	\$13,208.10	
	Black Cherry		0.3	MBF			
	Paper Birch		0.2	MBF			
	Red Maple		13.0	MBF			
	Red Oak		6.5	MBF			

Description of Timber by Payment Unit (PU), con't

PU	MARKET GROUP	PRODUCT	QUANTITY	UNIT	ACRES	ADVERTISE PRICE
7 con't	Sugar Maple	Sawtimber	19.5	MBF		
	Beech	Pulpwood	46.0	Cords		
	Misc. Species 1		4.0	Cords		
	<i>Misc. Species 1</i>		1.0	<i>Cords</i>		
	<i>Misc. Species 2</i>		3.0	<i>Cords</i>		
	Mixed Hardwood		98.0	Cords		
	<i>Black Cherry</i>		4.0	<i>Cords</i>		
	<i>Ironwood</i>		1.0	<i>Cords</i>		
	<i>Paper Birch</i>		1.0	<i>Cords</i>		
	<i>Red Maple</i>		28.0	<i>Cords</i>		
	<i>Sugar Maple</i>		64.0	<i>Cords</i>		
	Red Oak		5.0	Cords		
	White Pine		1.0	Cords		
	8	Beech	Sawtimber	13.1		
Black Cherry			0.4	MBF		
Paper Birch			0.2	MBF		
Red Maple			17.6	MBF		
Red Oak			8.8	MBF		
Sugar Maple			26.2	MBF		
Beech		Pulpwood	62.0	Cords		
Misc. Species 1			5.0	Cords		
<i>Misc. Species 1</i>			1.0	<i>Cords</i>		
<i>Misc. Species 2</i>			4.0	<i>Cords</i>		
Mixed Hardwood			131.0	Cords		
<i>Black Cherry</i>			5.0	<i>Cords</i>		
<i>Ironwood</i>			2.0	<i>Cords</i>		
<i>Paper Birch</i>			1.0	<i>Cords</i>		
<i>Red Maple</i>			37.0	<i>Cords</i>		
<i>Sugar Maple</i>			86.0	<i>Cords</i>		
Red Oak			7.0	Cords		
White Pine			2.0	Cords		
9		Beech	Sawtimber	12.7	MBF	47.5
	Black Cherry		0.4	MBF		
	Paper Birch		0.2	MBF		
	Red Maple		17.0	MBF		
	Red Oak		8.5	MBF		
	Sugar Maple		25.5	MBF		
	Beech	Pulpwood	60.0	Cords		
	Misc. Species 1		5.0	Cords		
	<i>Misc. Species 1</i>		1.0	<i>Cords</i>		
	<i>Misc. Species 2</i>		4.0	<i>Cords</i>		
	Mixed Hardwood		128.0	Cords		
	<i>Black Cherry</i>		5.0	<i>Cords</i>		
	<i>Ironwood</i>		2.0	<i>Cords</i>		
	<i>Paper Birch</i>		1.0	<i>Cords</i>		
	<i>Red Maple</i>		36.0	<i>Cords</i>		
	<i>Sugar Maple</i>		84.0	<i>Cords</i>		
	Red Oak		7.0	Cords		
	White Pine		2.0	Cords		
	10	Beech	Sawtimber	14.1	MBF	
Black Cherry			0.4	MBF		
Paper Birch			0.2	MBF		
Red Maple			18.9	MBF		
Red Oak			9.4	MBF		
Sugar Maple			28.2	MBF		
White Pine			0.1	MBF		



**Description of Timber by Payment Unit (PU), con't**

PU	MARKET GROUP	PRODUCT	QUANTITY	UNIT	ACRES	ADVERTISE PRICE
10 con't	Beech	Pulpwood	67.0	Cords		
	Misc. Species 1		5.0	Cords		
	<i>Misc. Species 1</i>		1.0	<i>Cords</i>		
	<i>Misc. Species 2</i>		4.0	<i>Cords</i>		
	Mixed Hardwood		141.0	Cords		
	<i>Black Cherry</i>		5.0	<i>Cords</i>		
	<i>Ironwood</i>		2.0	<i>Cords</i>		
	<i>Paper Birch</i>		1.0	<i>Cords</i>		
	<i>Red Maple</i>		40.0	<i>Cords</i>		
	<i>Sugar Maple</i>		93.0	<i>Cords</i>		
	Red Oak		7.0	Cords		
	White Pine		2.0	Cords		
	TOTAL:			575.4	MBF	
TOTAL:			1,796.0	Cords		

## Sale Specific Conditions & Requirements

**Sale Name: Deja Vu Hardwoods**

**Sale Number: 61-102-16 Seq#: 1**

### 1 - Sale Area

#### 1.2 - Boundaries

##### 1.2.1 - Painted boundaries (1/14)

The sale boundary and Payment Unit boundaries are marked and identified by blue, red and yellow paint. Exterior sale boundary lines against private property are marked with blue paint. Exterior sale boundary lines against state are marked with red paint. Interior Payment Unit boundaries are marked with yellow paint. The painted boundary and payment unit line trees are not Included Timber and are to be protected unless marked with orange paint or otherwise designated for removal.

### 2 - Timber Specifications

#### 2.1 - Included Timber

##### 2.1.3 - Cut tree marked unit(s) (12/08)

Within Payment Unit(s) 1, 2, 3, 4, 5, 6, 7, 8, 9, and 10, all trees are designated for cutting when marked with orange paint above and below stump height, regardless of merchantability. In addition, cut all aspen, ironwood and beech except those marked with an orange X. Dead trees marked with orange paint may be cut.

##### 2.1.11 - Description of timber note (2/04)

Note that Miscellaneous Species 1 is dead oak or maple which may be cut if marked with orange paint.

#### 2.2 - Utilization

##### 2.2.3 - Stump heights (4/07)

Stump heights within the Sale Area shall not exceed 12 inches for trees greater than 10 inches DBH and 4 inches for trees smaller than 10 inches DBH. A written waiver of this requirement may be obtained if wet summer weather makes winter logging necessary.

##### 2.2.4 - Skidding length (2/14)

Skidding of unlimbed tops or lengths over 17 feet is not permissible unless approved by the Unit Manager or his representative.

### 3 - Payments

#### 3.3 - Pre-measured Sales

##### 3.3.4 - Dividing payment units (7/14)

Payment Unit(s) greater than \$20,000 may be divided at the request of the Purchaser and upon approval of the Unit Manager. Dividing Payment Units is a contract modification which requires a Timber Sale Contract Supplement. There will be only one division per Payment Unit.

#### 3.4 - Damaged Timber

##### 3.4.1 - Damaged timber (6/14)

General Condition and Requirement 3.4 Damaged Timber, defines liquidated damages for undesignated live merchantable trees which are cut or injured. In addition, extreme care should be taken to avoid damage to tree seedlings and saplings. Within the sale area, if more than 25% of the tree seedlings or saplings (1/4" to 4.5" DBH) within a specified portion of the sale area are damaged, liquidated damages will be assessed at \$300 per acre for all acreage within that specified portion of the sale area that was damaged.

No damage is acceptable to merchantable trees. Within the sale area, if more than 10% of trees (> 4.5" DBH) within a specified area of the sale are damaged, liquidated damages will be assessed for all trees damaged. Rates will be in accordance with General Condition and Requirement 3.4 Damaged Timber.

### 4 - Transportation

#### 4.1 - Construction

#### 4.1.6 - Road construction (1/09)

Construction of new roads or improvements of existing roads shall be done in such a way as to minimize the environmental and visual impacts. Merchantable trees shall be cut and utilized unless otherwise directed. Non-merchantable trees shall be severed and laid flat on the ground. Slash shall be scattered, and not left in windrows and kept a minimum of 10 feet back from the road edge. Stumps shall be set upright, not left on edge, and be moved at least 10 feet away from the road edge. Disturbed soil shall be feathered into the woods and not left in berms or windrows.

#### 4.1.7 - Road closure (10/11)

All new roads built into the sale must be blocked to vehicle traffic within 30 days of completion of hauling. Overgrown roads that are reopened shall be considered new roads. In general, this will require constructing a four (4') foot high berm of stumps and logs covered with earth. These roads must be rendered impassable to cars, trucks and ORVs. Temporary berms may be required if no sale activity occurs for 30 or more consecutive days. Contact the sale administrator for specific details of design and placement.

#### 4.1.11 - Permits (2/12)

The Purchaser will secure any necessary Kaskaska County Road Commission driveway permits that may be required.

### 5 - Operations

#### 5.1 - Notification

##### 5.1.1 - Pre-sale conference (10/11)

A pre-sale conference on site between the Purchaser and sale administrator is required prior to beginning any operations a Payment Unit to determine landing and road locations. The Sale Administrator must be contacted at least 5 days in advance to schedule the conference.

##### 5.1.4 - Post-sale conference (6/11)

A post-sale conference on site between the Purchaser and sale administrator is required 3 days prior to the completion of active logging operations to determine clean-up and repair of landings, road edges, and the fulfillment of other contract specifications.

#### 5.2 - Conduct of Operations

##### 5.2.1 - Slash

###### 5.2.1.8 - Slash height (12/08)

No slash or tree tops may exceed 36 inches in height.

##### 5.2.2 - Hazard Trees/Snags

###### 5.2.2.1 - Den trees (2/04)

Obvious hollow and/or den trees shall be protected and left standing unless they are a safety hazard.

##### 5.2.3 - Operating Restrictions

###### 5.2.3.3 - Bark slippage restriction (3/09)

Within Payment Unit(s) 1, 2, 3, 4, 5, 6, 7, 8, 9, and 10, cutting, skidding, and hauling are not permitted during the period of April 15 to July 15. This restriction is because of bark slippage and oak wilt.

##### 5.2.29 - Shrub protection (9/07)

Do not cut or damage hawthorn, witch-hazel, dogwood or juneberry. These woody-shrub plants are highly beneficial to various wildlife species.

##### 5.2.32 - Decking/landing restoration (9/13)

All decking and landing areas must have the surface area restored to a condition equal to or better than before. This is to ensure the proper regeneration of the stand. Wood debris, chips and "cookies" from trimmings must be removed or scattered away from landing and loading areas and may not be windrowed on the edge.

##### 5.2.38 - No decking against live trees (2/04)

Cut products may not be decked against unmarked or designated leave trees.

##### 5.2.39 - ORV trail/route protection (12/12)

There is an ORV trail shown on the Timber Sale Map. Do not cut trees or damage posts with orange ORV markers. All stumps within 5 feet of the trail must be cut flush with the ground. Maintain a 20 foot wide slash, debris, and rut free zone daily using the ORV trail as the centerline. DO NOT RUN EQUIPMENT DOWN THE ORV TRAIL. Skidding across the trail may only occur in locations approved by the sale administrator.

#### 5.4 - Soil Protection

##### 5.4.1 - Rutting restriction, general (7/16)

Operations are to cease immediately if equipment and weather conditions result in rutting of roads and/or skid trails which is 12 inches or greater in depth and 50 feet in length. The Unit Manager or his/her representative may restrict hauling and/or skidding if ruts exceed the specified depth. With the Unit Manager or his/her representative's approval, the Purchaser may return to the area when the risk of rutting has decreased.

##### 5.4.4 - Slope protection (5/15)

Skid trails and roads on slopes shall be water barred with slash, stumps, and/or clean straw bales native to the area as soon as use is complete to prevent erosion.

#### 5.8 - Protection of Endangered Species

##### 5.8.5 - Protection of raptor nests (3/13)

All trees with raptor nests will be protected if found during harvesting operations. Notification will be made to the Unit Manager or his/her representative who will notify the Wildlife Biologist so an on-site evaluation and recommendation can be made, if necessary.

### 6 - Safety and Fire Prevention

#### 6.2 - Signing

##### 6.2.1 - Road posting (9/09)

The Purchaser is responsible for posting and maintaining caution signs on haul roads prior to beginning operations. The road must be posted at appropriate distances from the sale area to warn of logging activity and truck traffic. Signs must be removed when harvest operations are suspended or completed. The Purchaser will provide these signs.

##### 6.2.3 - Recreational trail posting (2/10)

The Purchaser is responsible for posting and maintaining caution signs on the ORV trail prior to beginning operations. The trail must be posted at appropriate distances from both ends the sale area to warn of logging activity and truck traffic at both ends of the trail. Signs must be removed when harvest operations are suspended or completed. The Purchaser will provide these signs.





# TIMBER SALE INFORMATION

## 119 Epic Beast (61-119-16)

Kalkaska County (Advertised Price \$328,458.20)

SALE NOTE: Class A access, nice black cherry, red maple and sugar maple logs and LOTS of hardwood pulp! Work needs to be performed during good frozen ground conditions or during a very dry summer, work will NOT be allowed during wet or thawing ground conditions.

A timber sale contract for this lump sum, sealed bid timber sale will be awarded to the responsible bidder offering the highest sealed bid price. Bids must be at or above the following advertised price for each species:

<u>PRODUCTS &amp; SPECIES</u>	<u>ESTIMATED UNITS*</u>		<u>ADVERTISED PRICE</u>
Sawtimber			
Basswood	30.20	MBF	\$ 102.00 / MBF
Beech	4.20	MBF	\$ 92.00 / MBF
Black Cherry	254.60	MBF	\$ 260.00 / MBF
Mixed Aspen	9.30	MBF	\$ 106.00 / MBF
Paper Birch	1.30	MBF	\$ 45.00 / MBF
Red Maple	636.80	MBF	\$ 159.00 / MBF
Sugar Maple	157.30	MBF	\$ 284.00 / MBF
White Pine	34.60	MBF	\$ 86.00 / MBF
Pulpwood			
Balsam Fir	116.00	Cords	\$ 15.75 / Cord
Basswood	57.00	Cords	\$ 12.45 / Cord
Black Spruce	6.00	Cords	\$ 25.45 / Cord
Hemlock	2.00	Cords	\$ 7.50 / Cord
Mixed Aspen	208.00	Cords	\$ 21.25 / Cord
Mixed Hardwood	4,759.00	Cords	\$ 21.05 / Cord
N. White Cedar	14.00	Cords	\$ 33.20 / Cord
White Pine	62.00	Cords	\$ 17.50 / Cord

\* The total volume is statistically estimated within plus (+) or minus (-) 6.18 percent. The estimated units are final and not subject to adjustment. Prospective bidders are urged to examine this timber and to make their own estimates of quantity and quality.

### **BOND AND PAYMENT SCHEDULE:**

1. A bond in the amount of \$16,423.00 to insure faithful performance of the conditions of the contract will be deposited by the successful bidder within 21 days of the sale award.
2. Cutting in any sale or unit without the required advance payment would be considered a trespass.
3. Total payment must be paid in advance or according to the following schedule:
  - (a) Ten percent (10%) of the sale value must be paid within 21 days of the sale award.
  - (b) The 10% down payment will be credited towards the first unit cut.
4. If no cutting takes place, the 10% down payment will not be refunded.
5. Operations on the contract issued will terminate on 12/31/2019.

**Description of Timber by Payment Unit (PU)**

PU	MARKET GROUP	PRODUCT	QUANTITY	UNIT	ACRES	ADVERTISE PRICE	
1	Black Cherry	Sawtimber	11.7	MBF	38.2	\$27,440.40	
	Red Maple		25.3	MBF			
	Sugar Maple		46.1	MBF			
	Mixed Hardwood		346.0	Cords			
	<i>Beech</i>		6.0	<i>Cords</i>			
	<i>Black Cherry</i>		29.0	<i>Cords</i>			
	<i>Red Maple</i>		135.0	<i>Cords</i>			
	<i>Sugar Maple</i>		176.0	<i>Cords</i>			
2	Basswood	Sawtimber	1.0	MBF	44.3	\$33,714.35	
	Beech		1.4	MBF			
	Black Cherry		18.7	MBF			
	Red Maple		26.3	MBF			
	Sugar Maple		58.6	MBF			
	White Pine		1.0	MBF			
	Basswood		Pulpwood	2.0			Cords
	Mixed Hardwood			361.0			Cords
	<i>Beech</i>			16.0			<i>Cords</i>
	<i>Black Cherry</i>			37.0			<i>Cords</i>
	<i>Red Maple</i>			99.0			<i>Cords</i>
	<i>Sugar Maple</i>			209.0			<i>Cords</i>
	White Pine			5.0			Cords
3	Black Cherry	Sawtimber	36.9	MBF	38.1	\$31,709.65	
	Red Maple		52.1	MBF			
	Sugar Maple		13.2	MBF			
	Mixed Hardwood		479.0	Cords			
	<i>Beech</i>		16.0	<i>Cords</i>			
	<i>Black Cherry</i>		98.0	<i>Cords</i>			
	<i>Red Maple</i>		304.0	<i>Cords</i>			
	<i>Sugar Maple</i>		61.0	<i>Cords</i>			
4	Black Cherry	Sawtimber	20.0	MBF	38.5	\$21,773.70	
	Red Maple		44.1	MBF			
	Sugar Maple		1.1	MBF			
	White Pine		1.1	MBF			
	Balsam Fir		Pulpwood	3.0			Cords
	Mixed Hardwood			431.0			Cords
	<i>Beech</i>			44.0			<i>Cords</i>
	<i>Black Cherry</i>			90.0			<i>Cords</i>
	<i>Red Maple</i>			282.0			<i>Cords</i>
	<i>Sugar Maple</i>			15.0			<i>Cords</i>
	White Pine			2.0			Cords
	5		Basswood	Sawtimber			20.3
Beech		2.1	MBF				
Black Cherry		16.4	MBF				
Red Maple		57.6	MBF				
Sugar Maple		9.3	MBF				
Basswood		Pulpwood	45.0		Cords		
Hemlock			2.0		Cords		
Mixed Aspen			13.0		Cords		
<i>Quaking Aspen</i>			13.0		<i>Cords</i>		
Mixed Hardwood			411.0		Cords		
<i>Beech</i>			12.0		<i>Cords</i>		
<i>Black Cherry</i>			48.0		<i>Cords</i>		
<i>Paper Birch</i>			5.0		<i>Cords</i>		
<i>Red Maple</i>			221.0		<i>Cords</i>		
<i>Sugar Maple</i>			95.0		<i>Cords</i>		
<i>White Ash</i>		30.0	<i>Cords</i>				



Description of Timber by Payment Unit (PU), con't

PU	MARKET GROUP	PRODUCT	QUANTITY	UNIT	ACRES	ADVERTISE PRICE			
5 con't	N. White Cedar	Pulpwood	14.0	Cords					
6	Black Cherry	Sawtimber	61.6	MBF	40.3	\$34,530.95			
	Red Maple		44.6	MBF					
	Balsam Fir	Pulpwood	11.0	Cords					
	Mixed Aspen		48.0	Cords					
	<i>Quaking Aspen</i>		48.0	<i>Cords</i>					
	Mixed Hardwood		486.0	Cords					
	<i>Black Cherry</i>		106.0	<i>Cords</i>					
	<i>Paper Birch</i>		10.0	<i>Cords</i>					
	<i>Red Maple</i>		366.0	<i>Cords</i>					
	<i>Sugar Maple</i>		4.0	<i>Cords</i>					
7	Black Cherry	Sawtimber	7.2	MBF	8.2	\$7,356.00			
	Red Maple		12.5	MBF					
	Mixed Aspen	Pulpwood	11.0	Cords					
	<i>Quaking Aspen</i>		11.0	<i>Cords</i>					
	Mixed Hardwood		155.0	Cords					
	<i>Black Cherry</i>		13.0	<i>Cords</i>					
	<i>Paper Birch</i>		4.0	<i>Cords</i>					
	<i>Red Maple</i>		138.0	<i>Cords</i>					
	8	Black Cherry	Sawtimber	31.3			MBF	35.2	\$33,600.20
		Mixed Aspen		3.7			MBF		
<i>B. T. Aspen</i>			3.7	<i>MBF</i>					
Red Maple			73.8	MBF					
Balsam Fir		Pulpwood	58.0	Cords					
Mixed Aspen			14.0	Cords					
<i>B. T. Aspen</i>			14.0	<i>Cords</i>					
Mixed Hardwood			576.0	Cords					
<i>Black Cherry</i>			73.0	<i>Cords</i>					
<i>Red Maple</i>			503.0	<i>Cords</i>					
9	Mixed Aspen	Sawtimber	5.6	MBF	15.9	\$11,178.20			
	<i>B. T. Aspen</i>		1.6	<i>MBF</i>					
	<i>Quaking Aspen</i>		4.0	<i>MBF</i>					
	Paper Birch		0.9	MBF					
	Red Maple		24.6	MBF					
	Balsam Fir	Pulpwood	30.0	Cords					
	Mixed Aspen		68.0	Cords					
	<i>B. T. Aspen</i>		21.0	<i>Cords</i>					
	<i>Quaking Aspen</i>		47.0	<i>Cords</i>					
	Mixed Hardwood		224.0	Cords					
	<i>Black Cherry</i>		5.0	<i>Cords</i>					
	<i>Paper Birch</i>		18.0	<i>Cords</i>					
	<i>Red Maple</i>		201.0	<i>Cords</i>					
10	Black Cherry	Sawtimber	20.4	MBF	72.0	\$54,466.75			
	Red Maple		177.6	MBF					
	Sugar Maple		10.2	MBF					
	Black Spruce	Pulpwood	6.0	Cords					
	Mixed Aspen		17.0	Cords					
	<i>B. T. Aspen</i>		14.0	<i>Cords</i>					
	<i>Quaking Aspen</i>		3.0	<i>Cords</i>					
	Mixed Hardwood		832.0	Cords					
	<i>Beech</i>		12.0	<i>Cords</i>					
	<i>Black Cherry</i>		46.0	<i>Cords</i>					
	<i>Paper Birch</i>		2.0	<i>Cords</i>					
	<i>Red Maple</i>		722.0	<i>Cords</i>					
	<i>Sugar Maple</i>		50.0	<i>Cords</i>					
	11	Black Cherry	Sawtimber	4.9			MBF	14.6	\$12,656.15

**Description of Timber by Payment Unit (PU), con't**

PU	MARKET GROUP	PRODUCT	QUANTITY	UNIT	ACRES	ADVERTISE PRICE			
	Paper Birch	Pulpwood	0.4	MBF					
	Red Maple		25.0	MBF					
	White Pine		32.5	MBF					
	Balsam Fir		11.0	Cords					
	Mixed Aspen		31.0	Cords					
	<i>B. T. Aspen</i>		28.0	<i>Cords</i>					
	<i>Quaking Aspen</i>		3.0	<i>Cords</i>					
	Mixed Hardwood		133.0	Cords					
	<i>Black Cherry</i>		33.0	<i>Cords</i>					
	<i>Paper Birch</i>		3.0	<i>Cords</i>					
	<i>Red Maple</i>		97.0	<i>Cords</i>					
	White Pine		55.0	Cords					
12	Black Cherry		Sawtimber	22.6			MBF	12.4	\$13,976.35
	Red Maple	Pulpwood	27.5	MBF					
	Sugar Maple		0.8	MBF					
	Balsam Fir		3.0	Cords					
	Mixed Aspen		6.0	Cords					
	<i>Quaking Aspen</i>		6.0	<i>Cords</i>					
	Mixed Hardwood		158.0	Cords					
	<i>Black Cherry</i>		33.0	<i>Cords</i>					
	<i>Ironwood</i>		2.0	<i>Cords</i>					
	<i>Red Maple</i>		103.0	<i>Cords</i>					
	<i>Sugar Maple</i>		20.0	<i>Cords</i>					
13	Basswood		Sawtimber	8.9	MBF	15.3	\$17,760.25		
	Beech		Pulpwood	0.7	MBF				
	Black Cherry			2.9	MBF				
	Red Maple	45.8		MBF					
	Sugar Maple	18.0		MBF					
	Basswood	10.0		Cords					
	Mixed Hardwood	167.0		Cords					
	<i>White Ash</i>	<i>Sawtimber</i>		3.1	<i>MBF</i>				
	<i>Beech</i>	<i>Pulpwood</i>		9.0	<i>Cords</i>				
	<i>Black Cherry</i>			3.0	<i>Cords</i>				
	<i>Misc. Species 2</i>			6.0	<i>Cords</i>				
	<i>Red Maple</i>			92.0	<i>Cords</i>				
	<i>Sugar Maple</i>			42.0	<i>Cords</i>				
	<i>White Ash</i>			8.0	<i>Cords</i>				
	<i>Yellow Birch</i>			1.0	<i>Cords</i>				
TOTAL:				1,128.3	MBF				
TOTAL:				5,224.0	Cords				

# Sale Specific Conditions & Requirements

**Sale Name: 119 Epic Beast**

**Sale Number: 61-119-16 Seq#: 1**

## 1 - Sale Area

### 1.2 - Boundaries

#### 1.2.1 - Painted boundaries (1/14)

The sale boundary and Payment Unit boundaries are marked and identified by blue, red and yellow paint. Exterior sale boundary lines against private property are marked with blue paint. Exterior sale boundary lines against state are marked with red paint. Interior Payment Unit boundaries are marked with yellow paint, with the exception of the boundary between Payment Units 8 and 9, which is identified by the road. Yellow painted Payment Unit trees are to remain uncut and undamaged unless they are marked with orange paint.

## 2 - Timber Specifications

### 2.1 - Included Timber

#### 2.1.1 - Clearcut unit(s) with unmerchantable trees (6/14)

Within Payment Unit(s) 8, 9 & 10, cut all trees that are three (3) inches or more at DBH except DO NOT cut any cedar, hemlock, yellow birch, white pine or trees marked with green paint above and below stump height.

#### 2.1.3 - Cut tree marked unit(s) (12/08)

Within Payment Unit(s) 1, 2, 3, 4, 5, 6, 12 & 13, all trees are designated for cutting when marked with orange paint above and below stump height, regardless of merchantability. In addition, cut all aspen, beech, ironwood and ash except DO NOT cut or damage those that are marked with an orange X.

#### 2.1.7 - Leave tree marked unit(s) (6/14)

Within Payment Unit(s) 7 & 11, all trees, which meet minimum piece specifications in 2.2 Utilization, are designated for cutting except DO NOT cut cedar, hemlock, yellow birch, elm or any trees marked with green paint above and below stump height.

### 2.2 - Utilization

#### 2.2.6 - Roundwood operation required (5/07)

The skidding of whole trees or tree segments with limbs attached is prohibited within Payment Unit's 1, 2, 3, 4, 5, 6, 12 & 13. All products must be produced as roundwood and forwarded to existing roads or landing areas in final product length.

## 3 - Payments

### 3.3 - Pre-measured Sales

#### 3.3.4 - Dividing payment units (7/14)

Payment Unit(s) over \$20,000 in value may be divided at the request of the Purchaser and upon approval of the Unit Manager. Dividing Payment Units is a contract modification which requires a Timber Sale Contract Supplement. There will be only one division per unit.

## 4 - Transportation

### 4.1 - Construction

#### 4.1.4 - Timber removed for construction (12/09)

Trees cut or damaged in the process of pre-approved road, landing or skid trail construction will be decked in an area separate from other Designated Timber and not removed until measured by the sale administrator. Payment will be made at the specified Purchase Unit Price.

#### 4.1.7 - Road closure (10/11)

All new roads built into the sale must be blocked to vehicle traffic upon completion of the sale. Overgrown roads that are reopened shall be considered new roads. In general, this will require constructing a four (4') foot high berm of stumps and logs covered with earth. Stumps and brush must be placed along the remainder of the trail where they are readily available. These roads must be rendered impassable to cars and trucks.

## 4.2 - Maintenance

### 4.2.1 - Hauling restriction (12/08)

Hauling may be restricted on forest roads by the Unit Manager or his/her representative. The restriction may occur during spring breakup or wet weather conditions.

### 4.2.3 - Road maintenance (8/13)

The following road maintenance is required: Within 60 days of completion of hauling the road must be shaped up and final dressed and left in as good or better shape than when the timber sale started. If frozen ground conditions hinder the 60 day time frame, it may be extended with the Unit Managers permission. This final dress of the road includes cleaning of drainage areas, crowning up and shaping up of all used forest roads. Care should be taken to avoid damage to geo-fabric over the culverts. Damages will be assessed if grading/repair does not occur.

## 4.4 - Access

### 4.4.3 - Access gate (12/08)

The access gate must be locked at all times. This is to prevent someone other than the Purchaser from going through the gate and being locked in.

## 5 - Operations

### 5.1 - Notification

#### 5.1.1 - Pre-sale conference (10/11)

A pre-sale conference on site between the Purchaser and sale administrator is required prior to beginning any operations to determine landing and road locations and to go over sale specifications. The Unit Manager or his/her representative must be contacted at least 3 days in advance to schedule the conference.

#### 5.1.4 - Post-sale conference (6/11)

A post-sale conference on site between the Purchaser and sale administrator is required 3 days prior to the completion of active logging operations to determine clean-up and repair of landings, road edges, and the fulfillment of other contract specifications.

### 5.2 - Conduct of Operations

#### 5.2.1 - Slash

##### 5.2.1.1 - Slash within sale area (2/04)

No trees are to be felled outside the sale area and all slash is to be kept at least 10 feet back from the blue paint line. Slash should also be kept out of the MDOT road Right of way.

#### 5.2.2 - Hazard Trees/Snags

##### 5.2.2.1 - Den trees (2/04)

Obvious hollow and/or den trees shall be protected and left standing unless they are a safety hazard.

#### 5.2.3 - Operating Restrictions

##### 5.2.3.1 - Operating restrictions (9/11)

Within Payment Unit(s) 1-13, cutting, skidding, and hauling are limited to frozen ground conditions or very dry ground conditions. This restriction is because of high water tables in most of the sale area and a vulnerable road system.

##### 5.2.3.3 - Bark slippage restriction (3/09)

Within Payment Unit(s) 1, 2, 3, 4, 5, 6, 7, 12 & 13, unless changed by written agreement cutting and skidding are not permitted during the period of April 15 to July 15. This restriction is because of bark slippage.

#### 5.2.32 - Decking/landing restoration (9/13)

All decking and landing areas must have the surface area restored to a condition equal to or better than before. This is to ensure the proper regeneration of the stand. Wood debris, chips and "cookies" from trimmings must be removed or scattered away from landing and loading areas and may not be windrowed on the edge.

#### 5.2.38 - No decking against live trees (2/04)

Cut products may not be decked against unmarked or designated leave trees.

#### 5.4 - Soil Protection

##### 5.4.1 - Rutting restriction, general (7/16)

Operations are to cease immediately if equipment and weather conditions result in rutting of roads and/or skid trails which is 12 inches or greater in depth and 50 feet in length. The Unit Manager or his/her representative may restrict hauling and/or skidding if ruts exceed the specified depth. With the Unit Manager or his/her representative's approval, the Purchaser may return to the area when the risk of rutting has decreased.

#### 5.8 - Protection of Endangered Species

##### 5.8.5 - Protection of raptor nests (3/13)

All trees with raptor nests will be protected if found during harvesting operations. Notification will be made to the Unit Manager or his/her representative who will notify the Wildlife Biologist so an on-site evaluation and recommendation can be made, if necessary.

##### 5.8.8 - Protected species, other (2/12)

Some of the sale area may be modified as needed for protection of rare and endangered species. This may include removing some of the sale area (producer will be reimbursed for removed volume) or it may include limiting the timing of harvest operations in a given area. This will be at the direction of the statewide Endangered Species Coordinator and the sale administrator.

### 6 - Safety and Fire Prevention

#### 6.2 - Signing

##### 6.2.1 - Road posting (9/09)

The Purchaser is responsible for posting and maintaining caution signs on M72 prior to beginning operations. The road must be posted at appropriate distances from the sale area, or as directed by MDOT, to warn of logging activity and truck traffic. Signs must be removed when harvest operations are suspended or completed. The Purchaser will provide these signs and they must be installed according to MDOT standards. 36" reflective signs on ground driven metal posts will likely be needed to warn of trucks entering highway.



# TIMBER SALE MAP

This information provided by authority of Part 525, 1994 PA 451, as amended.

Sale Number	Year
61- 119	16

Forest Management Unit Traverse City	County Kalkaska	Mapped By Kelly Standerfer	Date 6/27/2013	Page 1	of 1
Township 26&27N	Range 06W	Section(s) and Subdivision(s) 3, 27, 34 & 35 (see sale proposal)	Scale 1:23,760		

Cover Type				Density			
A = Aspen	H = Hemlock	N = Marsh	U = Upland Brush	0 = Non Stocked	5 = Pole Timber Medium		
B = Paper Birch	J = Jack Pine	O = Oak	UM = Upland Mixed	1 = Seedling Sapling Poor	6 = Pole Timber Well		
C = Cedar	L = Lowland Brush	P = Lowland Poplar	V = Bog or Marsh	2 = Seedling Sapling Medium	7 = Saw Timber Poor		
D = Tread Bog	LM = Lowland Mixed	Q = Mixed Swamp Conifer	W = White Pine	3 = Seedling Sapling Well	8 = Saw Timber Medium		
E = Swamp Hdwoods	M = Mpl, Bch, Brch	R = Red Pine	X = Non Stocked	4 = Pole Timber Poor	9 = Saw Timber Well		
F = Spruce Fir	MC = Mixed Conifer	S = Black Spruce	Z = Water				
G = Grass	MD = Mixed Deciduous	T = Tamarack					

## PU - Acres

1 - 38.2Ac	2 - 44.3Ac	3 - 38.1Ac	4 - 38.5Ac
5 - 45.8Ac	6 - 40.3Ac	7 - 8.2Ac	8 - 35.2Ac
9 - 15.9Ac	10 - 72.0Ac	11 - 14.6Ac	12 - 12.4Ac
13 - 15.3Ac			

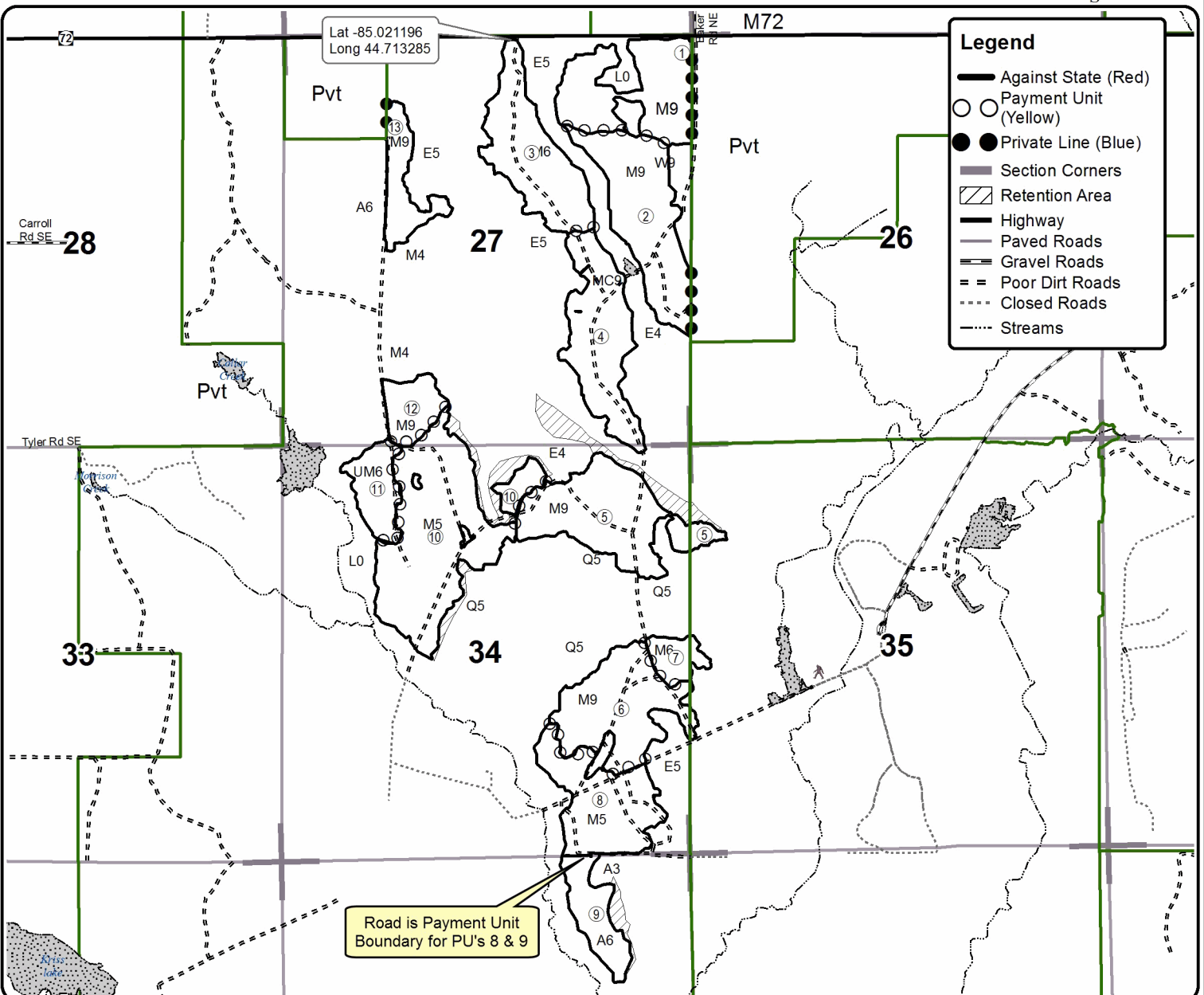
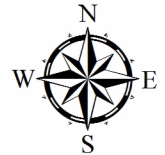
# 119 Epic Beast

## Compartment 119 & 120

### 418.8 Acres



Sale Map  
QR Code



**TIMBER SALE INFORMATION**

The Hornets Nest (61-144-16)

Kalkaska County (Advertised Price \$18,439.50)

SALE NOTE: A recreation site such as a trail, pathway, or campground is within the sale area or the vicinity. Certain restrictions/specifications may be applicable including time restrictions.

A timber sale contract for this lump sum, sealed bid timber sale will be awarded to the responsible bidder offering the highest sealed bid price. Bids must be at or above the following advertised price for each species:

<u>PRODUCTS &amp; SPECIES</u>	<u>ESTIMATED UNITS*</u>	<u>ADVERTISED PRICE</u>
<b>Sawtimber</b>		
Balsam Fir	15.80 MBF	\$ 38.00 / MBF
Black Cherry	18.40 MBF	\$ 260.00 / MBF
Mixed Aspen	14.90 MBF	\$ 106.00 / MBF
Red Maple	11.40 MBF	\$ 159.00 / MBF
<b>Pulpwood</b>		
Balsam Fir	81.00 Cords	\$ 15.75 / Cord
Mixed Aspen	78.00 Cords	\$ 21.25 / Cord
Mixed Hardwood	304.00 Cords	\$ 21.05 / Cord
Tamarack	17.00 Cords	\$ 19.45 / Cord

\* The total volume is statistically estimated within plus (+) or minus (-) 16.95 percent. The estimated units are final and not subject to adjustment. Prospective bidders are urged to examine this timber and to make their own estimates of quantity and quality.

**BOND AND PAYMENT SCHEDULE:**

1. A bond in the amount of \$922.00 to insure faithful performance of the conditions of the contract will be deposited by the successful bidder within 21 days of the sale award.
2. Cutting in any sale or unit without the required advance payment would be considered a trespass.
3. Total payment must be paid in advance or according to the following schedule:
  - (a) Ten percent (10%) of the sale value must be paid within 21 days of the sale award.
  - (b) The remainder is due before cutting begins.
4. If no cutting takes place, the 10% down payment will not be refunded.
5. Operations on the contract issued will terminate on 12/31/2018.

**Description of Timber by Payment Unit (PU)**

PU	MARKET GROUP	PRODUCT	QUANTITY	UNIT	ACRES	ADVERTISE PRICE
1	Balsam Fir	Sawtimber	15.8	MBF	32.9	\$18,439.50
	Black Cherry		18.4	MBF		
	Mixed Aspen		14.9	MBF		
	<i>B. T. Aspen</i>		2.0	<i>MBF</i>		
	<i>Quaking Aspen</i>		12.9	<i>MBF</i>		
	Red Maple		11.4	MBF		
	Balsam Fir	Pulpwood	81.0	Cords		
	Mixed Aspen		78.0	Cords		
	<i>B. T. Aspen</i>		6.0	<i>Cords</i>		
	<i>Quaking Aspen</i>		72.0	<i>Cords</i>		
	Mixed Hardwood		304.0	Cords		
	<i>Black Cherry</i>		177.0	<i>Cords</i>		
	<i>Red Maple</i>		123.0	<i>Cords</i>		
	<i>Sugar Maple</i>		4.0	<i>Cords</i>		
	Tamarack		17.0	Cords		
<b>TOTAL:</b>			60.5	MBF		
<b>TOTAL:</b>			480.0	Cords		

## Sale Specific Conditions & Requirements

**Sale Name: The Hornets Nest**

**Sale Number: 61-144-16 Seq#: 1**

### 1 - Sale Area

#### 1.2 - Boundaries

##### 1.2.1 - Painted boundaries (1/14)

The sale boundary is marked and identified by red paint. Exterior sale boundary lines against state are marked with red paint.

### 2 - Timber Specifications

#### 2.1 - Included Timber

##### 2.1.1 - Clearcut unit(s) with unmerchantable trees (6/14)

Within Payment Unit(s) 1, cut all trees that are four (4) inches or more at DBH. In addition, leave all trees marked with green paint.

### 3 - Payments

#### 3.3 - Pre-measured Sales

##### 3.3.4 - Dividing payment units (7/14)

Payment Unit(s) 1 may be divided at the request of the Purchaser and upon approval of the Unit Manager. Dividing Payment Units is a contract modification which requires a Timber Sale Contract Supplement. There will be only one division per Payment Unit.

### 4 - Transportation

#### 4.1 - Construction

##### 4.1.6 - Road construction (1/09)

Construction of new roads or improvements of existing roads shall be done in such a way as to minimize the environmental and visual impacts. Merchantable trees shall be cut and utilized unless otherwise directed. Non-merchantable trees shall be severed and laid flat on the ground. Slash shall be scattered, and not left in windrows and kept a minimum of 10 feet back from the road edge. Stumps shall be set upright, not left on edge, and be moved at least 10 feet away from the road edge. Disturbed soil shall be feathered into the woods and not left in berms or windrows.

#### 4.2 - Maintenance

##### 4.2.5 - Two wheel drive condition (2/04)

All existing trail roads on and adjacent to the sale area must be passable by two-wheel drive traffic for the duration of the sale.

### 5 - Operations

#### 5.1 - Notification

##### 5.1.1 - Pre-sale conference (10/11)

A pre-sale conference between the Purchaser and sale administrator is required prior to beginning any operations to determine landing and road locations. The Unit Manager or his/her representative must be contacted at least 3 days in advance to schedule the conference.

##### 5.1.4 - Post-sale conference (6/11)

A post-sale conference on site between the Purchaser and sale administrator is required 3 days prior to the completion of active logging operations to determine clean-up and repair of landings, road edges, and the fulfillment of other contract specifications.

#### 5.2 - Conduct of Operations

##### 5.2.2 - Hazard Trees/Snags



#### 5.2.2.1 - Den trees (2/04)

Obvious hollow and/or den trees shall be protected and left standing unless they are a safety hazard.

#### 5.2.39 - ORV trail/route protection (12/12)

The ORV route are shown on the Timber Sale Map. The ORV route is the two track which is the access for the sale. Do not cut trees or damage posts with orange ORV markers. All stumps within 5 feet of the trail must be cut flush with the ground. Maintain a 20 foot wide slash, debris, and rut free zone daily using the ORV trail as the centerline.

#### 5.2.41 - Snowmobile trail protection (9/11)

The snowmobile trail and is shown on the Timber Sale Map. Do not cut or damage posts with orange trail markers or traffic control signs. If the trail is used, it must be maintained and restored to a condition equal to or better than before the sale. If the trail road is to be used for hauling during the snowmobile season, then a snow covered base must be left on the trail. Maintain a 20 foot wide slash, debris, and rut free zone daily using the snowmobile trail as the centerline. No decking of forest products will be permitted along the snowmobile trail. All stumps within 20 feet of the snowmobile trail must be cut at ground level.

### 5.4 - Soil Protection

#### 5.4.1 - Rutting restriction, general (7/16)

Operations are to cease immediately if equipment and weather conditions result in rutting of roads and/or skid trails which is 12 inches or greater in depth and 50 feet in length. The Unit Manager or his/her representative may restrict hauling and/or skidding if ruts exceed the specified depth. With the Unit Manager or his/her representative's approval, the Purchaser may return to the area when the risk of rutting has decreased.

### 5.8 - Protection of Endangered Species

#### 5.8.5 - Protection of raptor nests (3/13)

All trees with raptor nests will be protected if found during harvesting operations. Notification will be made to the Unit Manager or his/her representative who will notify the Wildlife Biologist so an on-site evaluation and recommendation can be made, if necessary.

## 6 - Safety and Fire Prevention

### 6.2 - Signing

#### 6.2.3 - Recreational trail posting (2/10)

The Purchaser is responsible for posting and maintaining caution signs on the ORV Route and Snowmobile Trail prior to beginning operations. The trail must be posted at appropriate distances from the sale area to warn of logging activity and truck traffic at both ends of the trail. Signs must be removed when harvest operations are suspended or completed. The Purchaser will provide these signs.



# TIMBER SALE MAP

This information provided by authority of Part 525, 1994 PA 451, as amended.

Sale Number	Year
61-144	16

Forest Management Unit Traverse City	County Kalkaska	Mapped By Roell	Date 07/13/2016	Page 1	of 1
Township 27N	Range 06W	Section(s) and Subdivision(s) Section 1 E1/2NE, NESE	Scale 1:15,840		

Cover Type				Density	
A = Aspen	H = Hemlock	N = Marsh	U = Upland Brush	0 = Non Stocked	5 = Pole Timber Medium
B = Paper Birch	J = Jack Pine	O = Oak	UM = Upland Mixed	1 = Seedling Sapling Poor	6 = Pole Timber Well
C = Cedar	L = Lowland Brush	P = Lowland Poplar	V = Bog or Marsh	2 = Seedling Sapling Medium	7 = Saw Timber Poor
D = Tread Bog	LM = Lowland Mixed	Q = Mixed Swamp Conifer	W = White Pine	3 = Seedling Sapling Well	8 = Saw Timber Medium
E = Swamp Hdwoods	M = Mpl, Bch, Brch	R = Red Pine	X = Non Stocked	4 = Pole Timber Poor	9 = Saw Timber Well
F = Spruce Fir	MC = Mixed Conifer	S = Black Spruce	Z = Water		
G = Grass	MD = Mixed Deciduous	T = Tamarack			

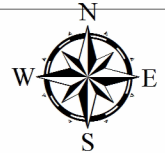
## PU Acres

1 32.9

# The Hornets Nest

## Compartment 109

### 32.9 Acres

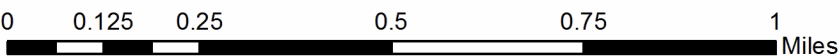
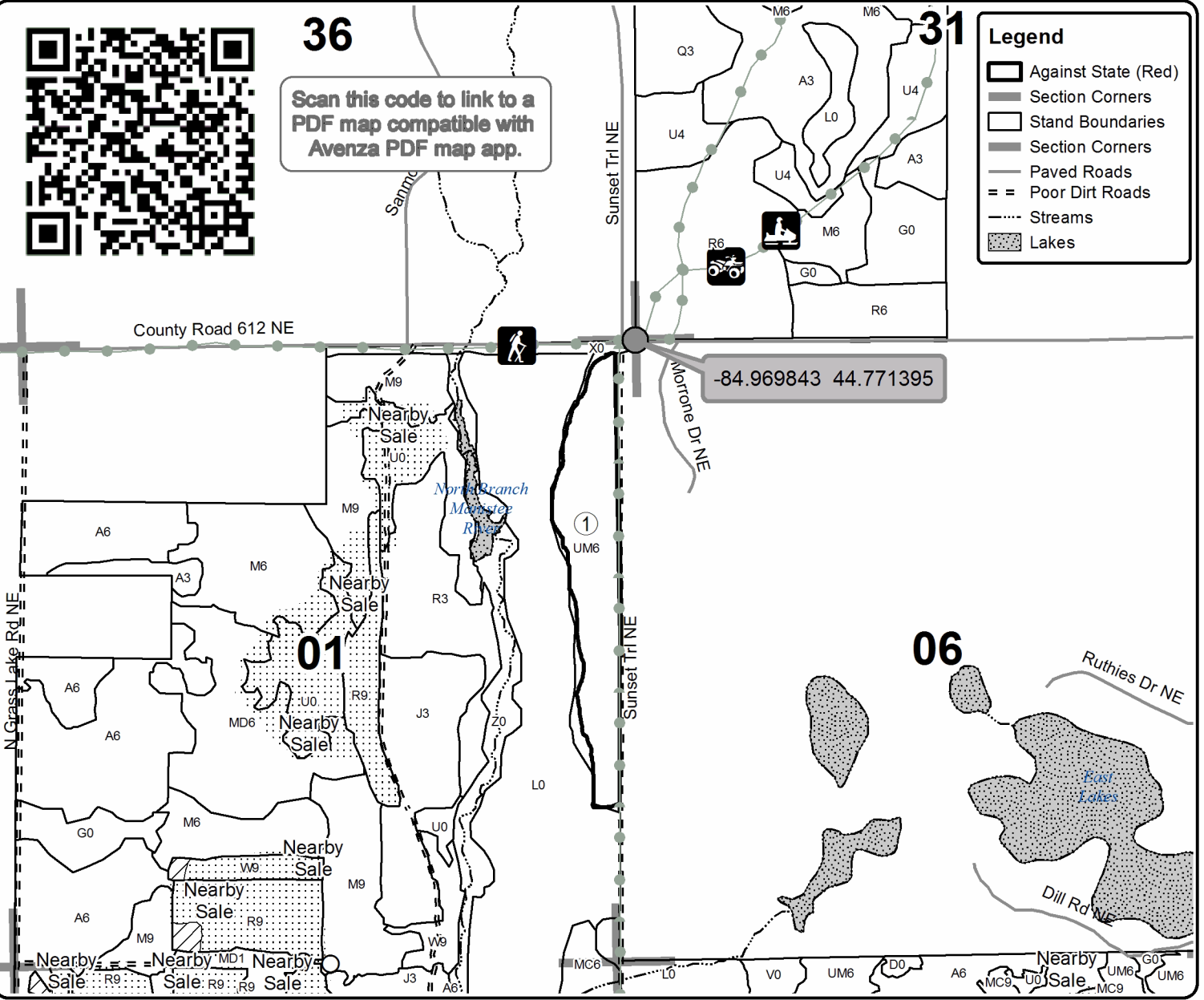


**36**

Scan this code to link to a PDF map compatible with Avenza PDF map app.

### Legend

- Against State (Red)
- Section Corners
- Stand Boundaries
- Section Corners
- Paved Roads
- Poor Dirt Roads
- Streams
- Lakes



TIMBER SALE INFORMATION

WWGD Red Pine (61-157-16)

Kalkaska County (Advertised Price \$152,240.55)

A timber sale contract for this lump sum, sealed bid timber sale will be awarded to the responsible bidder offering the highest sealed bid price. Bids must be at or above the following advertised price for each species:

<u>PRODUCTS &amp; SPECIES</u>	<u>ESTIMATED UNITS*</u>	<u>ADVERTISED PRICE</u>
Sawtimber		
Red Maple	12.10 MBF	\$ 148.00 / MBF
Red Oak	24.90 MBF	\$ 212.00 / MBF
Red Pine	826.70 MBF	\$ 113.00 / MBF
White Pine	85.40 MBF	\$ 81.00 / MBF
Pulpwood		
Jack Pine	157.00 Cords	\$ 10.15 / Cord
Mixed Aspen	176.00 Cords	\$ 19.80 / Cord
Mixed Hardwood	247.00 Cords	\$ 19.65 / Cord
Red Oak	87.00 Cords	\$ 14.55 / Cord
Red Pine	801.00 Cords	\$ 36.75 / Cord
White Pine	257.00 Cords	\$ 16.35 / Cord

\* The total volume is statistically estimated within plus (+) or minus (-) 11.37 percent. The estimated units are final and not subject to adjustment. Prospective bidders are urged to examine this timber and to make their own estimates of quantity and quality.

**BOND AND PAYMENT SCHEDULE:**

1. A bond in the amount of \$7,612.00 to insure faithful performance of the conditions of the contract will be deposited by the successful bidder within 21 days of the sale award.
2. Cutting in any sale or unit without the required advance payment would be considered a trespass.
3. Total payment must be paid in advance or according to the following schedule:
  - (a) Ten percent (10%) of the sale value must be paid within 21 days of the sale award.
  - (b) The 10% down payment will be credited towards the first unit cut.
4. If no cutting takes place, the 10% down payment will not be refunded.
5. Operations on the contract issued will terminate on 12/31/2018.





# Sale Specific Conditions & Requirements

**Sale Name: WWGD Red Pine**

**Sale Number: 61-157-16 Seq#: 1**

## 1 - Sale Area

### 1.2 - Boundaries

#### 1.2.1 - Painted boundaries (1/14)

The sale boundary and Payment Unit boundaries are marked and identified by blue, red and orange paint. Exterior sale boundary lines against private property are marked with blue paint. Exterior sale boundary lines against state are marked with red paint. Interior Payment Unit boundaries are marked with orange paint. Orange painted trees designating an interior Payment Unit boundary may be cut when all surrounding Payment Units have been paid, unless they are painted with green paint.

## 2 - Timber Specifications

### 2.1 - Included Timber

#### 2.1.1 - Clearcut unit(s) with unmerchantable trees (6/14)

Within Payment Unit(s) 1, 2, 3, 4, and 5, cut all trees that are two (2) inches or more at DBH.

#### 2.1.7 - Leave tree marked unit(s) (6/14)

Within Payment Unit(s) 6, cut all trees that are four (4) inches or more at DBH except trees marked with green paint above and below stump height.

#### 2.1.11 - Description of timber note (2/04)

Note that red oak pulpwood includes approximately 6 cords of dead oak, which is designated for cutting. Mixed Hardwood pulpwood includes approximately 212 cords red maple, 6 cords beech, 15 cords black cherry, and 14 cords paper birch.

### 2.2 - Utilization

#### 2.2.2 - Chipping required (5/14)

Payment Units 1, 2, 3, 4, and 5 must be chip harvested to facilitate subsequent planting operations. The Purchaser has the option to produce sawlogs or pulpwood bolts, but the remaining portion of the trees must be chipped and hauled. Do not chip 1/6 to 1/3 of the slash from harvested trees (tree tops and limbs less than four inches in diameter).

#### 2.2.3 - Stump heights (4/07)

Stump heights within Payment Units 1, 2, 3, 4, and 5 shall not exceed 8 inches for trees greater than 10 inches DBH and 4 inches for trees smaller than 10 inches DBH. This is in order to facilitate planting operations.

## 3 - Payments

### 3.3 - Pre-measured Sales

#### 3.3.4 - Dividing payment units (7/14)

Payment Unit(s) greater than \$15,000 may be divided at the request of the Purchaser and upon approval of the Unit Manager. Dividing Payment Units is a contract modification which requires a Timber Sale Contract Supplement. There will be only one division per Payment Unit.

### 3.4 - Damaged Timber

#### 3.4.1 - Damaged timber (6/14)

General Condition and Requirement 3.4 Damaged Timber, defines liquidated damages for undesignated live merchantable trees which are cut or injured. In addition, extreme care should be taken to avoid damage to pockets of dense tree seedlings and saplings in Payment Unit 6. Due to the abundance of advanced regeneration in some areas, some damage will be inevitable but should be minimized.

Within the sale area, if more than 50% the tree seedlings or saplings (1/4" to 4.5" DBH) within a specified portion of the sale area are damaged, liquidated damages will be assessed at \$300 per acre for all acreage within that specified portion of the sale area that was damaged.

## 4 - Transportation

### 4.1 - Construction

#### 4.1.6 - Road construction (1/09)

Construction of new roads or improvements of existing roads shall be done in such a way as to minimize the environmental and visual impacts. Merchantable trees shall be cut and utilized unless otherwise directed. Non-merchantable trees shall be severed and laid flat on the ground. Slash shall be chipped, scattered, and not left in windrows and kept a minimum of 10 feet back from the road edge. Stumps shall be set upright, not left on edge, and be moved at least 10 feet away from the road edge. Disturbed soil shall be feathered into the woods and not left in berms or windrows.

#### 4.1.7 - Road closure (10/11)

All new roads built into the sale must be blocked to vehicle traffic within 30 days of completion of hauling. Overgrown roads that are reopened shall be considered new roads. In general, this will require constructing a four (4') foot high berm of stumps and logs covered with earth. All stumps from road building and landing construction should be reserved to block any newly constructed roads upon completion of the sale. Temporary berms may be required if no sale activity occurs for 30 or more consecutive days. Contact the sale administrator for specific details of design and placement.

## 5 - Operations

### 5.1 - Notification

#### 5.1.1 - Pre-sale conference (10/11)

A pre-sale conference on site between the Purchaser and sale administrator is required prior to beginning any operations to determine landing and road locations. The sale administrator must be contacted at least 5 days in advance to schedule the conference.

#### 5.1.4 - Post-sale conference (6/11)

A post-sale conference on site between the Purchaser and sale administrator is required 3 days prior to the completion of active logging operations to determine clean-up and repair of landings, road edges, and the fulfillment of other contract specifications.

### 5.2 - Conduct of Operations

#### 5.2.1 - Slash

##### 5.2.1.8 - Slash height (12/08)

No slash or tree tops may exceed 24 inches in height.

#### 5.2.2 - Hazard Trees/Snags

##### 5.2.2.1 - Den trees (2/04)

Obvious hollow and/or den trees shall be protected and left standing unless they are a safety hazard.

#### 5.2.3 - Operating Restrictions

##### 5.2.3.6 - Bark beetle restriction (12/08)

In the event drought creates a high risk of pine bark beetle infestation, pine is not to be cut during the period March 1 through July 1, unless all portions of trees greater than two inches in diameter are removed from the sale area, reduced to chips, or treated to the satisfaction of the Unit Manager or his/her representative, within fifteen days of being severed from the stump. Pine log decks, pulpwood piles and treetops that are piled for chipping in the fall or winter within a 1/4 mile of susceptible sites must be removed before March 15. Residual slash must not be placed in piles or rows and must be spread over the site for quick drying. The Department of Natural Resources will exercise this specification if the risk of damage warrants.

#### 5.2.29 - Shrub protection (9/07)

Do not cut or damage hawthorn, witch hazel, or juneberry in Payment Unit 6. These woody-shrub plants are highly beneficial to various wildlife species. In areas where these shrubs are dense, some damage is inevitable but should be minimized.

#### 5.2.32 - Decking/landing restoration (9/13)

All decking and landing areas must have the surface area restored to a condition equal to or better than before. This is to

ensure the proper regeneration of the stand. Wood debris, chips and "cookies" from trimmings must be removed or scattered away from landing and loading areas and may not be windrowed on the edge.

#### 5.2.38 - No decking against live trees (2/04)

Cut products may not be decked against unmarked or designated leave trees.

### 5.4 - Soil Protection

#### 5.4.1 - Rutting restriction, general (7/16)

Operations are to cease immediately if equipment and weather conditions result in rutting of roads and/or skid trails which is 12 inches or greater in depth and 50 feet in length. The Unit Manager or his/her representative may restrict hauling and/or skidding if ruts exceed the specified depth. With the Unit Manager or his/her representative's approval, the Purchaser may return to the area when the risk of rutting has decreased.

## 6 - Safety and Fire Prevention

### 6.2 - Signing

#### 6.2.1 - Road posting (9/09)

The Purchaser is responsible for posting and maintaining caution signs on haul roads prior to beginning operations. The road must be posted at appropriate distances from the sale area to warn of logging activity and truck traffic. Signs must be removed when harvest operations are suspended or completed. The Purchaser will provide these signs.

#### 6.2.3 - Recreational trail posting (2/10)

The Purchaser is responsible for posting and maintaining caution signs on the ORV trail if it will be crossed by trucks prior to beginning operations. The trail must be posted 200 feet on either side of where the haul road(s) cross it, to warn of logging activity and truck traffic at both ends of the trail. Signs must be removed when harvest operations are suspended or completed. The Purchaser will provide these signs.

## 7 - Other Conditions

### 7.3 - Contract Modifications

#### 7.3.3 - Modification for reforestation (8/05)

When contractual work of Purchaser has been accepted for any Payment Unit identified on Sale Area Map, Payment Unit will be eliminated from the Sale Area on written notice so that reforestation operations can begin.





# TIMBER SALE MAP

This information provided by authority of Part 525, 1994 PA 451, as amended.

Sale Number	Year
61-157-16-01	2016

Forest Management Unit <b>Traverse City FMU</b>		County <b>Kalkaska</b>	Mapped By <b>Armstrong</b>		Date <b>8/11/2016</b>	Page <b>1</b>	of <b>1</b>
Township <b>27N</b>	Range <b>5W</b>	Section(s) and Subdivision(s) <b>Sec 15: SWSW; Sec 21: NE1/4; Sec 22: NENW, NWNW</b>			Scale <b>1:15,840</b>		
Cover Type				Density			
A = Aspen	H = Hemlock	N = Marsh	U = Upland Brush	0 = Non Stocked	5 = Pole Timber Medium		
B = Paper Birch	J = Jack Pine	O = Oak	UM = Upland Mixed	1 = Seedling Sapling Poor	6 = Pole Timber Well		
C = Cedar	L = Lowland Brush	P = Lowland Poplar	V = Bog or Marsh	2 = Seedling Sapling Medium	7 = Saw Timber Poor		
D = Treed Bog	LM = Lowland Mixed	Q = Mixed Swamp Conifer	W = White Pine	3 = Seedling Sapling Well	8 = Saw Timber Medium		
E = Swamp Hdwoods	M = Mpl, Bch, Brch	R = Red Pine	X = Non Stocked	4 = Pole Timber Poor	9 = Saw Timber Well		
F = Spruce Fir	MC = Mixed Conifer	S = Black Spruce	Z = Water				
G = Grass	MD = Mixed Deciduous	T = Tamarack					

## WWGD Red Pine Compartment 116 99.8 acres

P. Unit	Acres	P. Unit	Acres
1	7.4	4	19.1
2	14.9	5	12.3
3	16.1	6	30.0



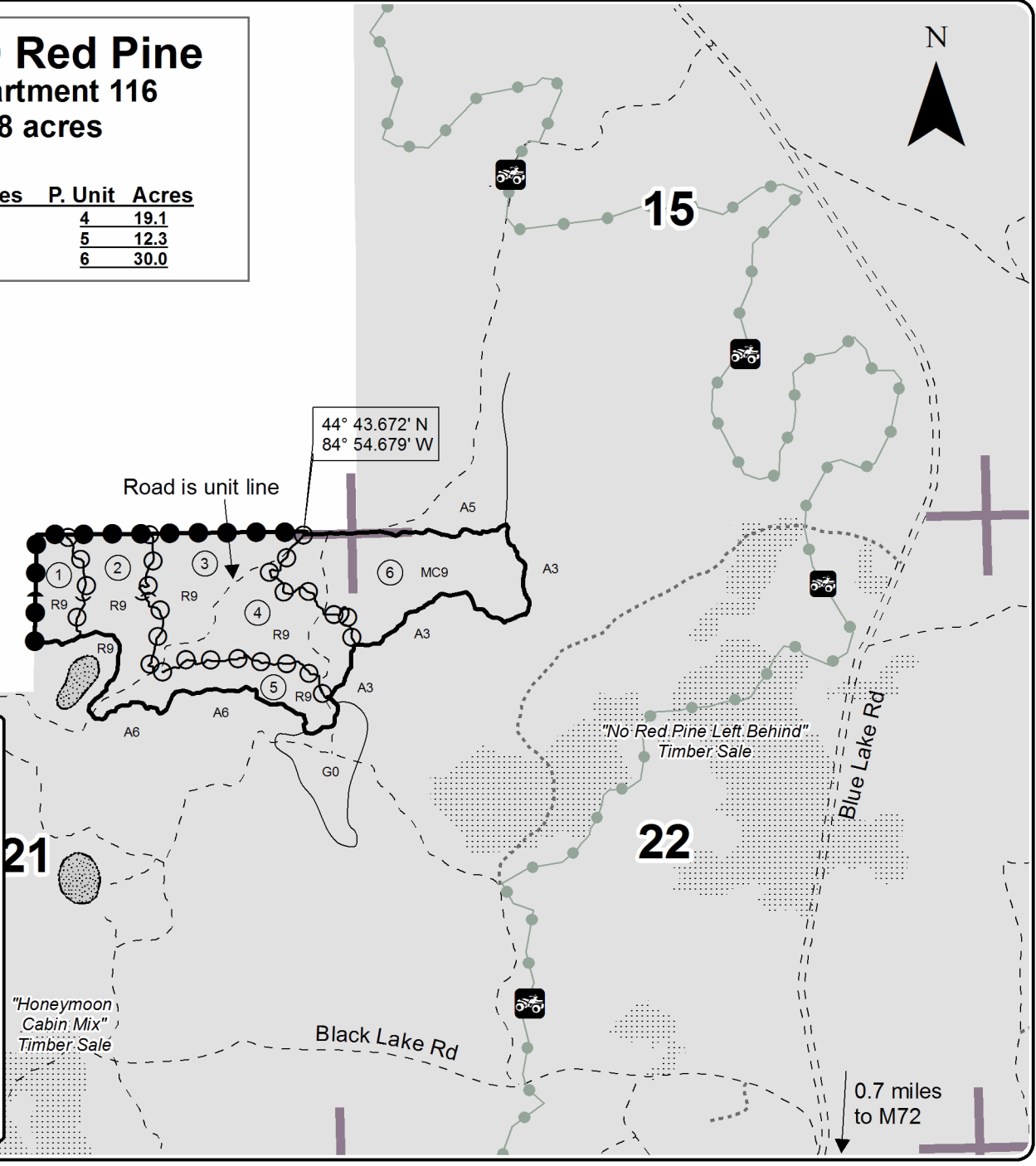
Middle Black Lake

44° 43.672' N  
84° 54.679' W

Road is unit line

**Legend**

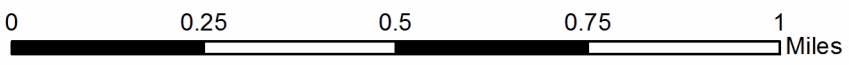
- Sale Boundary
- Against State (red)
- Payment Unit (orange)
- Against Private (blue)
- Stand Boundaries
- Recreational Trail
- Roads**
  - Paved Roads
  - Gravel Roads
  - Poor Dirt Roads
  - Closed Roads
  - Berm (to be added after sale)
- State Forest
- Section Corners



"No Red Pine Left Behind" Timber Sale

"Honeymoon Cabin Mix" Timber Sale

0.7 miles to M72





# TIMBER SALE INFORMATION

## Occidental Mix (61-158-16)

Kalkaska County (Advertised Price \$133,035.40)

SALE NOTE: A recreation site such as a trail, pathway, or campground is within the sale area or the vicinity. Certain restrictions/specifications may be applicable including time restrictions.

A timber sale contract for this lump sum, sealed bid timber sale will be awarded to the responsible bidder offering the highest sealed bid price. Bids must be at or above the following advertised price for each species:

<u>PRODUCTS &amp; SPECIES</u>	<u>ESTIMATED UNITS*</u>	<u>ADVERTISED PRICE</u>
Sawtimber		
Black Cherry	1.40 MBF	\$ 277.00 / MBF
Red Maple	10.10 MBF	\$ 170.00 / MBF
Red Pine	316.30 MBF	\$ 130.00 / MBF
Sugar Maple	14.80 MBF	\$ 303.00 / MBF
White Pine	20.00 MBF	\$ 92.00 / MBF
Pulpwood		
Balsam Fir	3.00 Cords	\$ 16.80 / Cord
Jack Pine	8.00 Cords	\$ 11.60 / Cord
Mixed Aspen	134.00 Cords	\$ 22.65 / Cord
Mixed Hardwood	527.00 Cords	\$ 22.45 / Cord
Red Pine	1,606.00 Cords	\$ 42.00 / Cord
White Pine	55.00 Cords	\$ 18.65 / Cord

\* The total volume is statistically estimated within plus (+) or minus (-) 7.47 percent. The estimated units are final and not subject to adjustment. Prospective bidders are urged to examine this timber and to make their own estimates of quantity and quality.

### **BOND AND PAYMENT SCHEDULE:**

1. A bond in the amount of \$6,652.00 to insure faithful performance of the conditions of the contract will be deposited by the successful bidder within 21 days of the sale award.
2. Cutting in any sale or unit without the required advance payment would be considered a trespass.
3. Total payment must be paid in advance or according to the following schedule:
  - (a) Ten percent (10%) of the sale value must be paid within 21 days of the sale award.
  - (b) The 10% down payment will be credited towards the first unit cut.
4. If no cutting takes place, the 10% down payment will not be refunded.
5. Operations on the contract issued will terminate on 12/31/2018.

**Description of Timber by Payment Unit (PU)**

PU	MARKET GROUP	PRODUCT	QUANTITY	UNIT	ACRES	ADVERTISE PRICE
1	Red Pine	Sawtimber	55.3	MBF	35.1	\$29,917.70
	White Pine		20.0	MBF		
	Mixed Aspen	Pulpwood	10.0	Cords		
	<i>Quaking Aspen</i>		10.0	<i>Cords</i>		
	Mixed Hardwood		1.0	Cords		
	<i>Black Cherry</i>		1.0	<i>Cords</i>		
	Red Pine		467.0	Cords		
	White Pine		55.0	Cords		
2	Red Pine	Sawtimber	52.0	MBF	28.1	\$26,880.15
	Sugar Maple		1.3	MBF		
	Mixed Hardwood	Pulpwood	5.0	Cords		
	<i>Red Maple</i>		3.0	<i>Cords</i>		
	<i>Sugar Maple</i>		2.0	<i>Cords</i>		
	Red Pine		467.0	Cords		
3	Red Pine	Sawtimber	181.0	MBF	62.0	\$42,556.00
	Red Pine	Pulpwood	453.0	Cords		
4	Red Pine	Sawtimber	18.0	MBF	16.5	\$11,038.75
	Mixed Aspen	Pulpwood	12.0	Cords		
	<i>B. T. Aspen</i>		12.0	<i>Cords</i>		
	Mixed Hardwood		91.0	Cords		
	<i>Black Cherry</i>		7.0	<i>Cords</i>		
	<i>Red Maple</i>		52.0	<i>Cords</i>		
	<i>Sugar Maple</i>		32.0	<i>Cords</i>		
	Red Pine		152.0	Cords		
5	Red Maple	Sawtimber	0.9	MBF	16.2	\$6,039.85
	Red Pine		10.0	MBF		
	Balsam Fir	Pulpwood	2.0	Cords		
	Jack Pine		8.0	Cords		
	Mixed Aspen		38.0	Cords		
	<i>B. T. Aspen</i>		38.0	<i>Cords</i>		
	Mixed Hardwood		35.0	Cords		
	<i>Black Cherry</i>		5.0	<i>Cords</i>		
	<i>Red Maple</i>		30.0	<i>Cords</i>		
	Red Pine		67.0	Cords		
6	Black Cherry	Sawtimber	1.4	MBF	12.0	\$7,589.40
	Red Maple		3.8	MBF		
	Sugar Maple		12.3	MBF		
	Mixed Hardwood	Pulpwood	126.0	Cords		
	<i>Beech</i>	<i>Sawtimber</i>	0.6	<i>MBF</i>		
	<i>Beech</i>	<i>Pulpwood</i>	9.0	<i>Cords</i>		
	<i>Black Cherry</i>		11.0	<i>Cords</i>		
	<i>Ironwood</i>		13.0	<i>Cords</i>		
	<i>Red Maple</i>		10.0	<i>Cords</i>		
	<i>Sugar Maple</i>		82.0	<i>Cords</i>		
	7	Red Maple	Sawtimber	5.4		
Sugar Maple			1.2	MBF		
Balsam Fir		Pulpwood	1.0	Cords		
Mixed Aspen			74.0	Cords		
<i>B. T. Aspen</i>		<i>Sawtimber</i>	2.6	<i>MBF</i>		
<i>B. T. Aspen</i>		<i>Pulpwood</i>	69.0	<i>Cords</i>		
Mixed Hardwood			269.0	Cords		
<i>Red Maple</i>			181.0	<i>Cords</i>		
<i>Sugar Maple</i>			88.0	<i>Cords</i>		
TOTAL:			362.6	MBF		

TOTAL:	2,333.0	Cords
--------	---------	-------

# Sale Specific Conditions & Requirements

**Sale Name: Occidental Mix**

**Sale Number: 61-158-16 Seq#: 1**

## 1 - Sale Area

### 1.2 - Boundaries

#### 1.2.1 - Painted boundaries (1/14)

The sale boundary and Payment Unit boundaries are marked and identified by blue, red and yellow paint. Exterior sale boundary lines against private property are marked with blue paint. Exterior sale boundary lines against state are marked with red paint. Interior Payment Unit boundaries are marked with yellow paint or double red paint, as shown on Timber Sale Map. The painted boundary line trees are not Included Timber and are to be protected unless marked with orange paint.

## 2 - Timber Specifications

### 2.1 - Included Timber

#### 2.1.1 - Clearcut unit(s) with unmerchantable trees (6/14)

Within Payment Unit(s) 5d, cut all trees that are two (2) inches or more at DBH.

#### 2.1.3 - Cut tree marked unit(s) (12/08)

Within Payment Unit(s) 3, 4, 5a, 5b, 5c, and 6, all trees are designated for cutting when marked with orange paint above and below stump height, regardless of merchantability. In addition, cut all aspen, beech, and ironwood.

#### 2.1.7 - Leave tree marked unit(s) (6/14)

Within Payment Unit(s) 7, cut all trees that are two (2) inches or more at DBH except trees marked with green paint above and below stump height.

#### 2.1.8 - Designated plantation row unit(s) (12/08)

Within Payment Unit(s) 1 and 2, all red pine and white pine trees which meet minimum piece specifications in 2.2 Utilization, within designated plantation rows are designated for cutting. Designated plantation rows begin with the third row in from the outside of the plantation, then continue every third row. Because of the variability of row direction, it shall be the responsibility of the producer to maintain the third row sequence. In addition, maple, cherry and aspen species within the cut rows may be cut.

#### 2.1.11 - Description of timber note (2/04)

Note that Mixed Aspen Pulpwood includes approximately 2.6 mbf sawlogs and that Mixed Hardwood Pulpwood includes approximately 0.6 mbf and 9 cords beech, 24 cords black cherry, 13 cords ironwood, 276 cords red maple, and 204 cords sugar maple.

## 3 - Payments

### 3.3 - Pre-measured Sales

#### 3.3.4 - Dividing payment units (7/14)

Payment Unit(s) greater than \$15,000 may be divided at the request of the Purchaser and upon approval of the Unit Manager. Dividing Payment Units is a contract modification which requires a Timber Sale Contract Supplement. There will be only one division per Payment Unit.

### 3.4 - Damaged Timber

#### 3.4.1 - Damaged timber (6/14)

General Condition and Requirement 3.4 Damaged Timber, defines liquidated damages for undesignated live merchantable trees which are cut or injured. In addition, extreme care should be taken to avoid damage to tree seedlings and saplings. Within the sale area, if more than 25% of the tree seedlings or saplings (1/4" to 4.5" DBH) within a specified portion of the sale area are damaged, liquidated damages will be assessed at \$300 per acre for all acreage within that specified portion of the sale area that was damaged.

## 4 - Transportation

### 4.1 - Construction

#### 4.1.6 - Road construction (1/09)

Construction of new roads or improvements of existing roads shall be done in such a way as to minimize the environmental and visual impacts. Merchantable trees shall be cut and utilized unless otherwise directed. Non-merchantable trees shall be severed and laid flat on the ground. Slash shall be scattered, and not left in windrows and kept a minimum of 10 feet back from the road edge. Stumps shall be set upright, not left on edge, and be moved at least 10 feet away from the road edge. Disturbed soil shall be feathered into the woods and not left in berms or windrows.

#### 4.1.7 - Road closure (10/11)

All new roads built into the sale must be blocked to vehicle traffic within 30 days of completion of hauling. Overgrown roads that are reopened shall be considered new roads. In general, this will require constructing a four (4') foot high berm of stumps and logs covered with earth. Temporary berms may be required if no sale activity occurs for 30 or more consecutive days. Contact the sale administrator for specific details of design and placement.

#### 4.1.11 - Permits (2/12)

The Purchaser will secure any necessary driveway permits that may be required.

### 5 - Operations

#### 5.1 - Notification

##### 5.1.1 - Pre-sale conference (10/11)

A pre-sale conference on site between the Purchaser and sale administrator is required prior to beginning any operations to determine landing locations. The sale administrator must be contacted at least 3 days in advance to schedule the conference.

##### 5.1.3 - Well heads and natural gas pipelines (11/15)

The Purchaser is responsible for contacting the gas or pipeline company prior to operating equipment in the vicinity of well heads or natural gas pipelines. It may be desirable to access parts of Payment Units 4, 5 and 7 through the gated oil/gas facility shown on the timber sale map. Contact Merit Energy at 231-258-9157.

##### 5.1.4 - Post-sale conference (6/11)

A post-sale conference on site between the Purchaser and sale administrator is required 3 days prior to the completion of active logging operations to determine clean-up and repair of landings, road edges, and the fulfillment of other contract specifications.

#### 5.2 - Conduct of Operations

##### 5.2.1 - Slash

###### 5.2.1.8 - Slash height (12/08)

No slash or tree tops may exceed 36 inches in height.

##### 5.2.2 - Hazard Trees/Snags

###### 5.2.2.1 - Den trees (2/04)

Obvious hollow and/or den trees shall be protected and left standing unless they are a safety hazard.

##### 5.2.3 - Operating Restrictions

###### 5.2.3.3 - Bark slippage restriction (3/09)

Within Payment Unit(s) 1, 2, 3, 4, 5a, 5b, 5c, and 6, unless changed by written agreement, cutting and skidding are not permitted during the period of April 15 to July 15. This restriction is because of bark slippage.

###### 5.2.3.6 - Bark beetle restriction (12/08)

In the event drought creates a high risk of pine bark beetle infestation, pine is not to be cut during the period March 1 through July 1, unless all portions of trees greater than two inches in diameter are removed from the sale area, reduced to chips, or treated to the satisfaction of the Unit Manager or his/her representative, within fifteen days of being severed from the stump. Pine log decks, pulpwood piles and treetops that are piled for chipping in the fall or winter within a 1/4 mile of susceptible sites must be removed before March 15. Residual slash must not be placed in piles or rows and must be spread over the site for quick drying. The Department of Natural Resources will exercise this specification if the risk of damage warrants.

#### 5.2.32 - Decking/landing restoration (9/13)

All decking and landing areas must have the surface area restored to a condition equal to or better than before. This is to ensure the proper regeneration of the stand. Wood debris, chips and "cookies" from trimmings must be removed or scattered away from landing and loading areas and may not be windrowed on the edge.

#### 5.2.38 - No decking against live trees (2/04)

Cut products may not be decked against unmarked or designated leave trees.

#### 5.2.40 - Pathway protection (10/10)

The Shore-to-Shore Trail horse trail is shown on the Timber Sale Map. Do not cut trees or damage posts with blue pathway markers. Maintain a 20-foot wide slash, debris, and rut free zone daily, using the pathway as the centerline. **DO NOT RUN EQUIPMENT DOWN THE PATHWAY.** Skidding across the trail may only occur in locations approved by the sale administrator.

### 5.4 - Soil Protection

#### 5.4.1 - Rutting restriction, general (7/16)

Operations are to cease immediately if equipment and weather conditions result in rutting of roads and/or skid trails which is 12 inches or greater in depth and 50 feet in length. The Unit Manager or his/her representative may restrict hauling and/or skidding if ruts exceed the specified depth. With the Unit Manager or his/her representative's approval, the Purchaser may return to the area when the risk of rutting has decreased.

## 6 - Safety and Fire Prevention

### 6.2 - Signing

#### 6.2.3 - Recreational trail posting (2/10)

The Purchaser is responsible for posting and maintaining caution signs on the Shore-to-Shore Horse Trail prior to beginning operations. The trail must be posted at appropriate distances from both sides of Payment Unit 2 to warn of logging activity and truck traffic at both ends of the trail. Signs must be removed when harvest operations are suspended or completed. The Purchaser will provide these signs.





# TIMBER SALE MAP

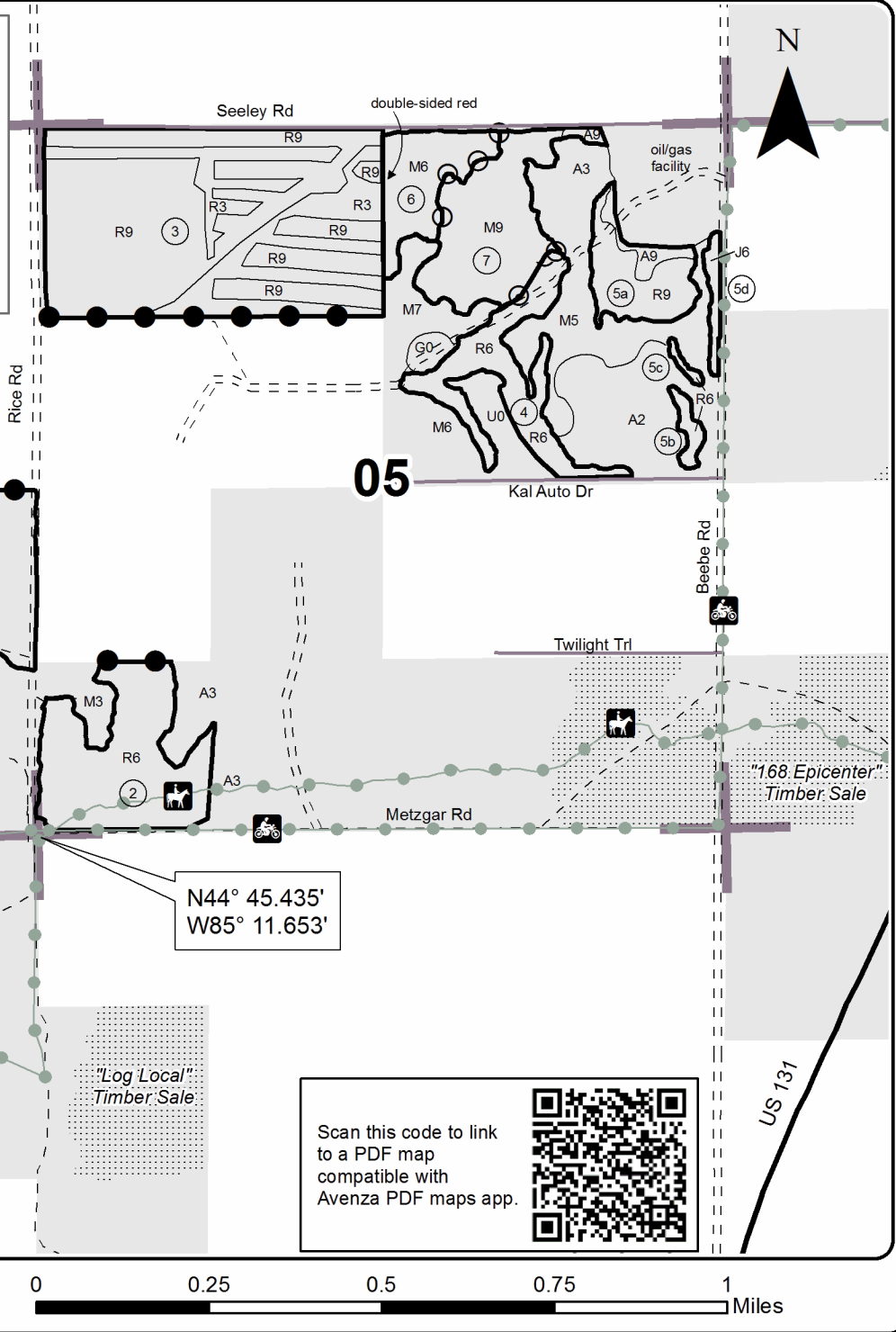
This information provided by authority of Part 525, 1994 PA 451, as amended.

Sale Number	Year
61-158-16-01	2016

Forest Management Unit Traverse City FMU		County Kalkaska	Mapped By Armstrong Cruised By Kalkaska crew		Date 9/6/2016	Page 1	of 1
Township 27N	Range 7W	Section(s) and Subdivision(s) Sec 5: NE1/4, N1/2NW, S1/2SW; Sec 6: NESE, NWSE, SESE			Scale 1:15,840		
<b>Cover Type</b>				<b>Density</b>			
A = Aspen	H = Hemlock	N = Marsh	U = Upland Brush	0 = Non Stocked	5 = Pole Timber Medium		
B = Paper Birch	J = Jack Pine	O = Oak	UM = Upland Mixed	1 = Seedling Sapling Poor	6 = Pole Timber Well		
C = Cedar	L = Lowland Brush	P = Lowland Poplar	V = Bog or Marsh	2 = Seedling Sapling Medium	7 = Saw Timber Poor		
D = Treed Bog	LM = Lowland Mixed	Q = Mixed Swamp Conifer	W = White Pine	3 = Seedling Sapling Well	8 = Saw Timber Medium		
E = Swamp Hdwoods	M = Mpl, Bch, Brch	R = Red Pine	X = Non Stocked	4 = Pole Timber Poor	9 = Saw Timber Well		
F = Spruce Fir	MC = Mixed Conifer	S = Black Spruce	Z = Water				
G = Grass	MD = Mixed Deciduous	T = Tamarack					

## Occidental Mix Compartment 168 191.9 acres

P. Unit	Acres	P. Unit	Acres
1	35.1	5b	1.8
2	28.1	5c	0.6
3	62.0	5d	2.1
4	16.5	6	12.0
5a	11.7	7	22.0



**Legend**

- Sale Boundary
- Against State (red)
- Payment Unit (yellow)
- Against Private (blue)
- Nearby Timber Sale
- Stand Boundaries
- Recreational Trail
- Roads**
  - Highway
  - Paved Roads
  - Gravel Roads
  - Poor Dirt Roads
- State Forest
- Section Corners

N44° 45.435'  
W85° 11.653'

Scan this code to link to a PDF map compatible with Avenza PDF maps app.



# TIMBER SALE INFORMATION

## Down Stream Mix (61-162-16)

Kalkaska County (Advertised Price \$73,904.25)

SALE NOTE: This timber sale contains areas of wet ground. Please take this into consideration when bidding on the sale.

A timber sale contract for this lump sum, sealed bid timber sale will be awarded to the responsible bidder offering the highest sealed bid price. Bids must be at or above the following advertised price for each species:

<u>PRODUCTS &amp; SPECIES</u>	<u>ESTIMATED UNITS*</u>	<u>ADVERTISED PRICE</u>
Sawtimber		
Basswood	2.20 MBF	\$ 82.00 / MBF
Black Cherry	0.50 MBF	\$ 208.00 / MBF
Paper Birch	8.10 MBF	\$ 36.00 / MBF
Red Maple	117.20 MBF	\$ 127.00 / MBF
Red Pine	150.50 MBF	\$ 97.00 / MBF
White Pine	158.80 MBF	\$ 69.00 / MBF
Pulpwood		
Balsam Fir	227.00 Cords	\$ 12.60 / Cord
Black Spruce	205.00 Cords	\$ 20.35 / Cord
Jack Pine	22.00 Cords	\$ 8.70 / Cord
Mixed Aspen	337.00 Cords	\$ 17.00 / Cord
Mixed Hardwood	657.00 Cords	\$ 16.85 / Cord
Red Pine	139.00 Cords	\$ 31.50 / Cord
Tamarack	29.00 Cords	\$ 15.60 / Cord
White Pine	278.00 Cords	\$ 14.00 / Cord
White Spruce	7.00 Cords	\$ 20.35 / Cord

\* The total volume is statistically estimated within plus (+) or minus (-) 6.85 percent. The estimated units are final and not subject to adjustment. Prospective bidders are urged to examine this timber and to make their own estimates of quantity and quality.

### **BOND AND PAYMENT SCHEDULE:**

1. A bond in the amount of \$3,695.00 to insure faithful performance of the conditions of the contract will be deposited by the successful bidder within 21 days of the sale award.
2. Cutting in any sale or unit without the required advance payment would be considered a trespass.
3. Total payment must be paid in advance or according to the following schedule:
  - (a) Ten percent (10%) of the sale value must be paid within 21 days of the sale award.
  - (b) The 10% down payment will be credited towards the first unit cut.
4. If no cutting takes place, the 10% down payment will not be refunded.
5. Operations on the contract issued will terminate on 12/31/2019.



Description of Timber by Payment Unit (PU), con't

PU	MARKET GROUP	PRODUCT	QUANTITY	UNIT	ACRES	ADVERTISE PRICE
6	Paper Birch	Sawtimber	4.0	MBF	16.8	\$9,509.70
	Red Maple		32.5	MBF		
	White Pine		5.8	MBF		
	Balsam Fir	Pulpwood	69.0	Cords		
	Black Spruce		55.0	Cords		
	Mixed Aspen		24.0	Cords		
	<i>Quaking Aspen</i>	<i>Sawtimber</i>	1.1	<i>MBF</i>		
	<i>Quaking Aspen</i>	<i>Pulpwood</i>	22.0	<i>Cords</i>		
	Mixed Hardwood		122.0	Cords		
	<i>Black Cherry</i>		5.0	<i>Cords</i>		
	<i>Paper Birch</i>		17.0	<i>Cords</i>		
	<i>Red Maple</i>		100.0	<i>Cords</i>		
	Tamarack		12.0	Cords		
	White Pine		4.0	Cords		
	White Spruce		7.0	Cords		
7	Black Cherry	Sawtimber	0.5	MBF	10.2	\$5,907.75
	Paper Birch		0.8	MBF		
	Red Maple		4.8	MBF		
	Red Pine		21.8	MBF		
	White Pine		8.0	MBF		
	Balsam Fir	Pulpwood	7.0	Cords		
	Black Spruce		43.0	Cords		
	Mixed Aspen		10.0	Cords		
	<i>Quaking Aspen</i>		10.0	<i>Cords</i>		
	Mixed Hardwood		42.0	Cords		
	<i>Black Cherry</i>		2.0	<i>Cords</i>		
	<i>Paper Birch</i>		1.0	<i>Cords</i>		
	<i>Red Maple</i>		39.0	<i>Cords</i>		
	Red Pine		10.0	Cords		
	Tamarack		13.0	Cords		
White Pine		10.0	Cords			
8	Paper Birch	Sawtimber	0.5	MBF	9.2	\$3,928.25
	Red Maple		9.1	MBF		
	Red Pine		4.9	MBF		
	White Pine		15.2	MBF		
	Balsam Fir	Pulpwood	13.0	Cords		
	Mixed Aspen		5.0	Cords		
	<i>Quaking Aspen</i>		5.0	<i>Cords</i>		
	Mixed Hardwood		45.0	Cords		
	<i>Black Cherry</i>		5.0	<i>Cords</i>		
	<i>Paper Birch</i>		9.0	<i>Cords</i>		
	<i>Red Maple</i>		31.0	<i>Cords</i>		
	Red Pine		2.0	Cords		
	Tamarack		4.0	Cords		
	White Pine		7.0	Cords		
	9	Basswood	Sawtimber	2.2		
Paper Birch			2.4	MBF		
Red Maple			51.6	MBF		
Red Pine			4.8	MBF		
White Pine			16.7	MBF		
Balsam Fir		Pulpwood	50.0	Cords		
Black Spruce			3.0	Cords		
Mixed Aspen			17.0	Cords		
<i>Quaking Aspen</i>			17.0	<i>Cords</i>		
Mixed Hardwood			191.0	Cords		
<i>Basswood</i>			5.0	<i>Cords</i>		

**Description of Timber by Payment Unit (PU), con't**

PU	MARKET GROUP	PRODUCT	QUANTITY	UNIT	ACRES	ADVERTISE PRICE
9 con't	<i>Paper Birch</i>	<i>Pulpwood</i>	11.0	<i>Cords</i>		
	<i>Red Maple</i>		172.0	<i>Cords</i>		
	<i>Sugar Maple</i>		3.0	<i>Cords</i>		
	Red Pine		5.0	Cords		
	White Pine		12.0	Cords		
TOTAL:			437.3	MBF		
TOTAL:			1,901.0	Cords		

## Sale Specific Conditions & Requirements

**Sale Name: Down Stream Mix**

**Sale Number: 61-162-16 Seq#: 1**

### 1 - Sale Area

#### 1.2 - Boundaries

##### 1.2.1 - Painted boundaries (1/14)

The sale boundary and Payment Unit boundaries are marked and identified by blue, red and yellow paint. Exterior sale boundary lines against private property are marked with blue paint. Exterior sale boundary lines against state are marked with red paint. Interior Payment Unit boundaries are marked with yellow paint. The painted boundary line trees are not Included Timber and are to be protected unless marked with orange paint.

### 2 - Timber Specifications

#### 2.1 - Included Timber

##### 2.1.3 - Cut tree marked unit(s) (12/08)

Within Payment Unit(s) 2, 3, 4, and 7, all trees are designated for cutting when marked with orange paint above and below stump height, regardless of merchantability. In addition, cut all jack pine and aspen. Also, cut all spruce, fir and tamarack that is greater than 4" in diameter.

##### 2.1.7 - Leave tree marked unit(s) (6/14)

Within Payment Unit(s) 1, 5, 6, 8 and 9, cut all trees that are two (2) inches or more at DBH except, DO NOT CUT spruce, balsam fir or pine that are less than 4" in diameter. Also, DO NOT CUT oak, cedar, hemlock and trees marked with GREEN paint.

#### 2.2 - Utilization

##### 2.2.4 - Skidding length (2/14)

Skidding of unlimbed tops or lengths over 17 feet is not permissible with in Payment Units 2, 3, and 4.

##### 2.2.9 - No chipping permitted (12/08)

Within Payment Unit(s) 1-9, all wood must be removed by tree segment, or roundwood. No chipping is permitted.

### 3 - Payments

#### 3.4 - Damaged Timber

##### 3.4.1 - Damaged timber (6/14)

General Condition and Requirement 3.4 Damaged Timber, defines liquidated damages for undesignated live merchantable trees which are cut or injured. In addition, extreme care should be taken to avoid damage to tree seedlings and saplings.

Within the sale area, if more than 25% of the tree seedlings or saplings (1/4" to 4.5" DBH) within a specified portion of the sale area are damaged, liquidated damages will be assessed at \$200 per acre for all acreage within that specified portion of the sale area that was damaged.

No damage is acceptable to merchantable trees. Within the sale area, if more than 10% of trees (> 4.5" DBH) within a specified area of the sale are damaged, liquidated damages will be assessed for all trees damaged. Rates will be in accordance with General Condition and Requirement 3.4 Damaged Timber.

### 4 - Transportation

#### 4.1 - Construction

##### 4.1.6 - Road construction (1/09)

Construction of new roads or improvements of existing roads shall be done in such a way as to minimize the environmental and visual impacts. Merchantable trees shall be cut and utilized unless otherwise directed. Non-merchantable trees shall be severed and laid flat on the ground. Slash shall be scattered, and not left in windrows and kept a minimum of 10 feet back from the road edge. Stumps shall be set upright, not left on edge, and be moved at least 10 feet away from the road edge.

Disturbed soil shall be feathered into the woods and not left in berms or windrows.

#### 4.1.7 - Road closure (10/11)

All new roads built into the sale must be blocked to vehicle traffic within 30 days of completion of hauling. Overgrown roads that are reopened shall be considered new roads. In general, this will require constructing a four (4') foot high berm of stumps and logs covered with earth. Stumps and brush must be placed along the remainder of the trail. These roads must be rendered impassable to cars, trucks and ORVs. Contact the sale administrator for specific details of design and placement.

## 5 - Operations

### 5.1 - Notification

#### 5.1.1 - Pre-sale conference (10/11)

A pre-sale conference between the Purchaser and sale administrator is required prior to beginning any operations to determine landing and road locations. The sale administrator must be contacted at least 3 days in advance to schedule the conference.

#### 5.1.4 - Post-sale conference (6/11)

A post-sale conference on site between the Purchaser and sale administrator is required 3 days prior to the completion of active logging operations to determine clean-up and repair of landings, road edges, and the fulfillment of other contract specifications.

### 5.2 - Conduct of Operations

#### 5.2.1 - Slash

##### 5.2.1.8 - Slash height (12/08)

No slash may exceed 24 inches in height.

#### 5.2.2 - Hazard Trees/Snags

##### 5.2.2.1 - Den trees (2/04)

Obvious hollow and/or den trees shall be protected and left standing unless they are a safety hazard.

#### 5.2.4 - Dead and Down Creation

##### 5.2.4.4 - Dead and down creation, grouse (8/13)

To encourage grouse and other wildlife, in Payment Unit(s) 1, 6, 8, and 9, leave at least six (6) large tops in a single pile and at least one pile per 4 acres. These will be evenly scattered throughout the unit.

#### 5.2.22 - Operating Caution

##### 5.2.22.2 - Operating caution (6/11)

It is recommended, but not required, that within Payment Unit(s) 1-9, cutting and skidding occur during dry summer or frozen winter conditions. The reason for the recommendation is because of wet ground conditions.

#### 5.2.29 - Shrub protection (9/07)

Do not cut or damage hawthorn, witch-hazel, dogwood or junberry. These woody-shrub plants are highly beneficial to various wildlife species.

#### 5.2.32 - Decking/landing restoration (9/13)

All decking and landing areas must have the surface area restored to a condition equal to or better than before. This is to ensure the proper regeneration of the stand.

### 5.4 - Soil Protection

#### 5.4.1 - Rutting restriction, general (7/16)

Operations are to cease immediately if equipment and weather conditions result in rutting of roads and/or skid trails which is 12 inches or greater in depth and 50 feet in length. The Unit Manager or his/her representative may restrict hauling and/or skidding if ruts exceed the specified depth. With the Unit Manager or his/her representative's approval, the Purchaser may return to the area when the risk of rutting has decreased.

#### 5.4.6 - Wet area protection (5/10)



No harvesting operations, including skidding and felling, are to take place within ephemeral drainages. When harvesting occurs, there should be no disturbance to the depression or drainages. All equipment, trees and tops should be kept out of this area. Within 50 feet of the pond or drainage, equipment should only be used when the soil is in a dry or frozen condition. Care must be taken by the Purchaser to identify and avoid operating in these areas of the timber sale. Payment Units 1, 5, 6 and 9 contain seasonal drainages.

#### 5.8 - Protection of Endangered Species

##### 5.8.5 - Protection of raptor nests (3/13)

All trees with raptor nests will be protected if found during harvesting operations. Notification will be made to the Unit Manager or his/her representative who will notify the Wildlife Biologist so an on-site evaluation and recommendation can be made, if necessary.

### **6 - Safety and Fire Prevention**

#### 6.2 - Signing

##### 6.2.1 - Road posting (9/09)

The Purchaser is responsible for posting and maintaining caution signs on Dutch John rd. prior to beginning operations. The road must be posted at appropriate distances from the sale area to warn of logging activity and truck traffic. Signs must be removed when harvest operations are suspended or completed. The Purchaser will provide these signs.



# TIMBER SALE MAP

This information provided by authority of Part 525, 1994 PA 451, as amended.

Forest Management Unit Traverse City		County Kalkaska	Mapped By Crigier	Date 08/08/2016	Page 1	of 1
Township 25N	Range 07W	Section(s) and Subdivision(s) 27: W1/2NE, NENE, W1/2SE, NESW, E1/2NW 33: N1/2NE 34: NWNF, NWNW	Cruised By Kalkaska Crew	Scale 1:15,840		

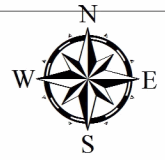
Cover Type				Density			
A = Aspen	H = Hemlock	N = Marsh	U = Upland Brush	0 = Non Stocked	5 = Pole Timber Medium		
B = Paper Birch	J = Jack Pine	O = Oak	UM = Upland Mixed	1 = Seedling Sapling Poor	6 = Pole Timber Well		
C = Cedar	L = Lowland Brush	P = Lowland Poplar	V = Bog or Marsh	2 = Seedling Sapling Medium	7 = Saw Timber Poor		
D = Treed Bog	LM = Lowland Mixed	Q = Mixed Swamp Conifer	W = White Pine	3 = Seedling Sapling Well	8 = Saw Timber Medium		
E = Swamp Hdwoods	M = Mpl, Bch, Brch	R = Red Pine	X = Non Stocked	4 = Pole Timber Poor	9 = Saw Timber Well		
F = Spruce Fir	MC = Mixed Conifer	S = Black Spruce	Z = Water				
G = Grass	MD = Mixed Deciduous	T = Tamarack					

PU	Acres	PU	Acres
1	26.4	6	16.8
2	14.3	7	10.2
3	3.9	8	9.2
4	12.9	9	16
5	16.1		

## Down Stream Mix

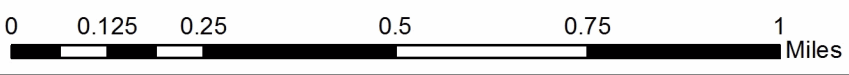
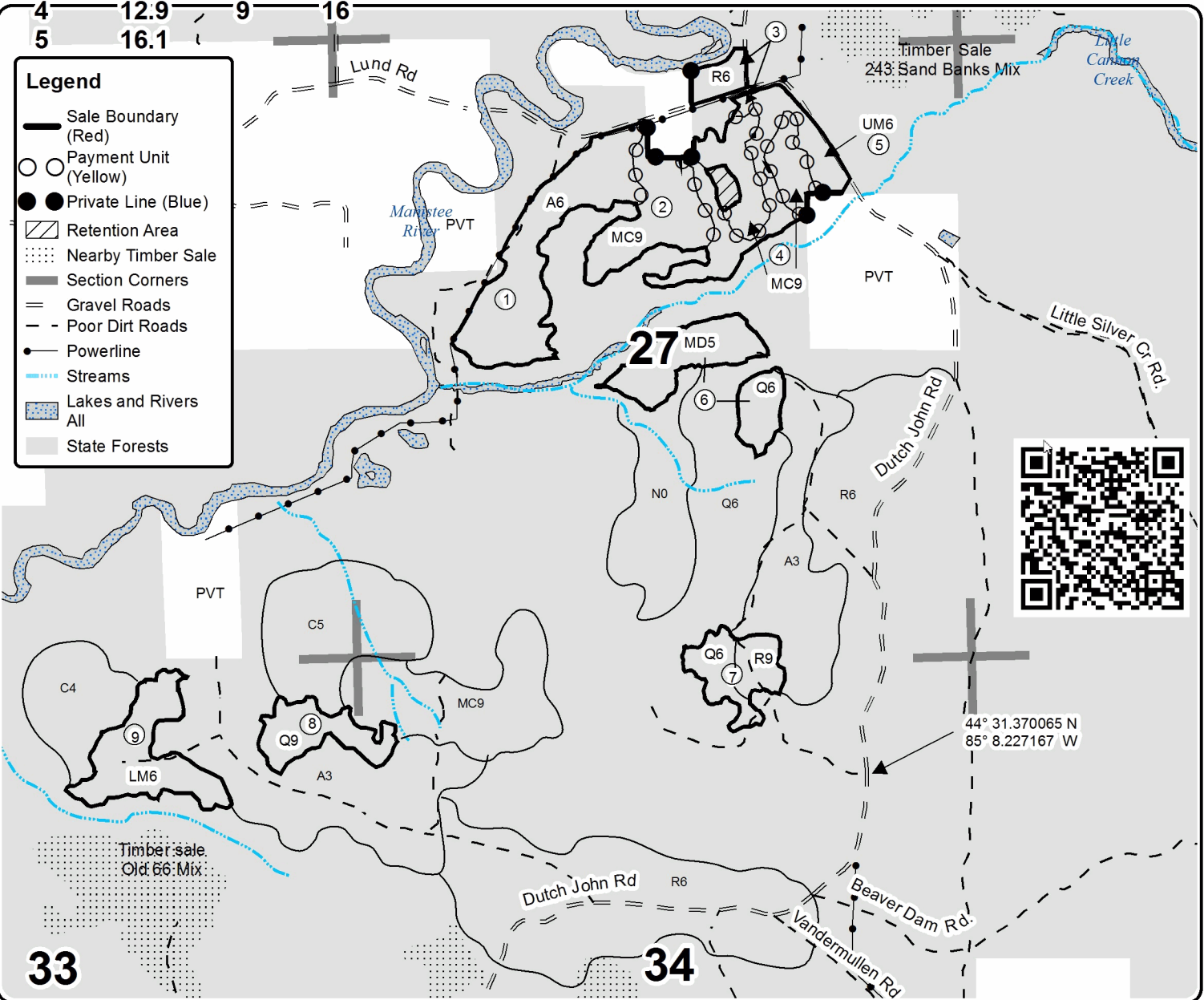
### Compartment 245

125.8 Acres



**Legend**

- Sale Boundary (Red)
- Payment Unit (Yellow)
- Private Line (Blue)
- Retention Area
- Nearby Timber Sale
- Section Corners
- Gravel Roads
- Poor Dirt Roads
- Powerline
- Streams
- Lakes and Rivers All
- State Forests



119 Epic Beast (61-119-16)  
 ; Kalkaska COUNTY

In response to the notice of sale to be held 4:00 p.m. (local time) on December 12, 2016, I am hereby submitting my sealed bid (firm offer) for the following forest products to be cut. Bids for individual species must be at or above the advertised price. All non-responsive bid forms may be rejected.

<u>PRODUCTS &amp; SPECIES</u>	<u>ESTIMATED VOLUME*</u>	<u>ADVERTISED PRICE</u>	<u>BID PRICE</u>
<b>Sawtimber</b>			
Basswood	30.20 MBF	\$ 102.00/MBF	\$ _____
Beech	4.20 MBF	\$ 92.00/MBF	\$ _____
Black Cherry	254.60 MBF	\$ 260.00/MBF	\$ _____
Mixed Aspen	9.30 MBF	\$ 106.00/MBF	\$ _____
Paper Birch	1.30 MBF	\$ 45.00/MBF	\$ _____
Red Maple	636.80 MBF	\$ 159.00/MBF	\$ _____
Sugar Maple	157.30 MBF	\$ 284.00/MBF	\$ _____
White Pine	34.60 MBF	\$ 86.00/MBF	\$ _____
<b>Pulpwood</b>			
Balsam Fir	116.00 Cords	\$ 15.75/Cord	\$ _____
Basswood	57.00 Cords	\$ 12.45/Cord	\$ _____
Black Spruce	6.00 Cords	\$ 25.45/Cord	\$ _____
Hemlock	2.00 Cords	\$ 7.50/Cord	\$ _____
Mixed Aspen	208.00 Cords	\$ 21.25/Cord	\$ _____
Mixed Hardwood	4,759.00 Cords	\$ 21.05/Cord	\$ _____
N. White Cedar	14.00 Cords	\$ 33.20/Cord	\$ _____
White Pine	62.00 Cords	\$ 17.50/Cord	\$ _____

\*The volumes are statistically estimated within plus (+) or minus (-) 6.18 percent. These estimated volumes are final and not subject to adjustment. Prospective bidders are urged to examine this timber and to make their own estimates of quantity and quality.

I understand that any or all bids may be rejected. All bids must be signed and all bid items must be bid or the bid form may be rejected. I also understand that consideration and awarding a contract will be based upon my past performance and ability to complete the contract based upon equipment and staffing subject to my control.

FEDERAL ID: \_\_\_\_ - \_\_\_\_ - \_\_\_\_ or SOCIAL SECURITY NUMBER: \_\_\_\_ - \_\_\_\_ - \_\_\_\_

Company or individual bidding: \_\_\_\_\_

Company representative's name: \_\_\_\_\_

Address: \_\_\_\_\_

City: \_\_\_\_\_ State: \_\_\_\_\_ Zip: \_\_\_\_\_

IF AVAILABLE, PLEASE PLACE THE PERSONALIZED LABEL FROM YOUR PROSPECTUS IN THE ABOVE BOX.

Individual or company representative's signature: \_\_\_\_\_ Date: \_\_\_\_\_

Phone number : \_\_\_\_\_ Email (optional): \_\_\_\_\_

**THE WINNING BIDDER MUST COMPLETE THE VERIFICATION OF WORKER'S DISABILITY COMPENSATION ACT COMPLIANCE (ON REVERSE SIDE IF DOUBLE SIDED) WITHIN 21 DAYS OF SALE AWARD DATE**



FOR DEPARTMENT USE ONLY	
Sale Number (XX - XXX - XX - XX)	
Forest Management Unit:	

# TIMBER SALE VERIFICATION OF WORKER'S DISABILITY COMPENSATION ACT COMPLIANCE

As required by Act 317, P.A. 1969 (Worker's Compensation) and  
Part 5 of Act 451 of 1994, as amended.

## VERIFICATION OF WORKER'S DISABILITY COMPENSATION ACT COMPLIANCE

- This verification must be completed and submitted within 21 days of contract award and prior to the issuance of the timber sale contract.
- In addition, if boxes 2B or 2C are checked, then Notice of Exclusion or Certificate of Insurance must be submitted within twenty-one (21) days of the contract award and prior to the issuance of the timber sale contract.
- All information must be typed or printed except for written signatures.

Please Check Appropriate Categories:

1. My business is organized as (you **must** check one of the boxes below):
  - A.  Sole Proprietorship (individual)
  - B.  Partnership
  - C.  Corporation
2. You **must** check one of the boxes below:
  - A.  I certify my business is a sole proprietorship and it has no employees but the sole proprietor. I am not subject to the Worker's Compensation Laws.
  - B.  I certify my business has satisfied its obligation to the Worker's Compensation Act through the use of an approved Notice of Exclusion (BWC-337, Rev. 5/96). I will provide a copy of the Notice of Exclusion within 21 days of the contract award. (For questions or a copy of the BWC-337, please call the Worker's Compensation Bureau at 517-322-1195).
  - C.  I certify my business has a Worker's Compensation Policy. I will provide an original Certificate of Insurance within twenty-one (21) days of the contract award.
3. If you have checked item 2(A) or 2(B), you **must** indicate the number of **both** full-time and part-time employees, other than yourself, including family members and active partners (if none, you must enter "0").

\_\_\_\_\_ Full-time Employees

\_\_\_\_\_ Part-time Employees

Name of Business		Federal ID (or) Social Security No.	
Address		Telephone (       )	
City	State	ZIP	

*I hereby certify that the above information is true and correct. I agree to notify the Michigan DNR of any changes that occur in factors affecting my coverage during any of my present and future operations.*

\_\_\_\_\_  
Signature of Owner or Authorized Representative

\_\_\_\_\_  
Title

\_\_\_\_\_  
Date

Please complete the "SEALED BID" information on the next page

Deja Vu Hardwoods (61-102-16)  
 ; Kalkaska COUNTY

In response to the notice of sale to be held 4:00 p.m. (local time) on December 12, 2016, I am hereby submitting my sealed bid (firm offer) for the following forest products to be cut. Bids for individual species must be at or above the advertised price. All non-responsive bid forms may be rejected.

<u>PRODUCTS &amp; SPECIES</u>	<u>ESTIMATED VOLUME*</u>	<u>ADVERTISED PRICE</u>	<u>BID PRICE</u>
<b>Sawtimber</b>			
Beech	113.40 MBF	\$ 92.00/MBF	\$ _____
Black Cherry	3.60 MBF	\$ 260.00/MBF	\$ _____
Paper Birch	2.00 MBF	\$ 45.00/MBF	\$ _____
Red Maple	152.40 MBF	\$ 159.00/MBF	\$ _____
Red Oak	76.00 MBF	\$ 228.00/MBF	\$ _____
Sugar Maple	227.60 MBF	\$ 284.00/MBF	\$ _____
White Pine	0.40 MBF	\$ 86.00/MBF	\$ _____
<b>Pulpwood</b>			
Beech	537.00 Cords	\$ 21.05/Cord	\$ _____
Misc. Species 1	42.00 Cords	\$ 3.75/Cord	\$ _____
Mixed Hardwood	1,141.00 Cords	\$ 21.05/Cord	\$ _____
Red Oak	60.00 Cords	\$ 15.60/Cord	\$ _____
White Pine	15.00 Cords	\$ 17.50/Cord	\$ _____

\*The volumes are statistically estimated within plus (+) or minus (-) 18.22 percent. These estimated volumes are final and not subject to adjustment. Prospective bidders are urged to examine this timber and to make their own estimates of quantity and quality.

I understand that any or all bids may be rejected. All bids must be signed and all bid items must be bid or the bid form may be rejected. I also understand that consideration and awarding a contract will be based upon my past performance and ability to complete the contract based upon equipment and staffing subject to my control.

FEDERAL ID: \_\_\_\_ - \_\_\_\_ - \_\_\_\_ or SOCIAL SECURITY NUMBER: \_\_\_\_ - \_\_\_\_ - \_\_\_\_

Company or individual bidding: \_\_\_\_\_

Company representative's name: \_\_\_\_\_

Address: \_\_\_\_\_

City: \_\_\_\_\_ State: \_\_\_\_\_ Zip: \_\_\_\_\_

IF AVAILABLE, PLEASE PLACE THE PERSONALIZED LABEL FROM YOUR PROSPECTUS IN THE ABOVE BOX.

Individual or company representative's signature: \_\_\_\_\_ Date: \_\_\_\_\_

Phone number : \_\_\_\_\_ Email (optional): \_\_\_\_\_

**THE WINNING BIDDER MUST COMPLETE THE VERIFICATION OF WORKER'S DISABILITY COMPENSATION ACT COMPLIANCE (ON REVERSE SIDE IF DOUBLE SIDED) WITHIN 21 DAYS OF SALE AWARD DATE**



The Hornets Nest (61-144-16)  
 ; Kalkaska COUNTY

In response to the notice of sale to be held 4:00 p.m. (local time) on December 12, 2016, I am hereby submitting my sealed bid (firm offer) for the following forest products to be cut. Bids for individual species must be at or above the advertised price. All non-responsive bid forms may be rejected.

<u>PRODUCTS &amp; SPECIES</u>	<u>ESTIMATED VOLUME*</u>	<u>ADVERTISED PRICE</u>	<u>BID PRICE</u>
<b>Sawtimber</b>			
Balsam Fir	15.80 MBF	\$ 38.00/MBF	\$ _____
Black Cherry	18.40 MBF	\$ 260.00/MBF	\$ _____
Mixed Aspen	14.90 MBF	\$ 106.00/MBF	\$ _____
Red Maple	11.40 MBF	\$ 159.00/MBF	\$ _____
<b>Pulpwood</b>			
Balsam Fir	81.00 Cords	\$ 15.75/Cord	\$ _____
Mixed Aspen	78.00 Cords	\$ 21.25/Cord	\$ _____
Mixed Hardwood	304.00 Cords	\$ 21.05/Cord	\$ _____
Tamarack	17.00 Cords	\$ 19.45/Cord	\$ _____

\*The volumes are statistically estimated within plus (+) or minus (-) 16.95 percent. These estimated volumes are final and not subject to adjustment. Prospective bidders are urged to examine this timber and to make their own estimates of quantity and quality.

I understand that any or all bids may be rejected. All bids must be signed and all bid items must be bid or the bid form may be rejected. I also understand that consideration and awarding a contract will be based upon my past performance and ability to complete the contract based upon equipment and staffing subject to my control.

FEDERAL ID: \_\_\_\_\_ - \_\_\_\_\_ or SOCIAL SECURITY NUMBER: \_\_\_\_\_ - \_\_\_\_\_ - \_\_\_\_\_

Company or individual bidding: \_\_\_\_\_

Company representative's name: \_\_\_\_\_

Address: \_\_\_\_\_

City: \_\_\_\_\_ State: \_\_\_\_\_ Zip: \_\_\_\_\_

IF AVAILABLE, PLEASE PLACE THE PERSONALIZED LABEL FROM YOUR PROSPECTUS IN THE ABOVE BOX.

Individual or company representative's signature: \_\_\_\_\_ Date: \_\_\_\_\_

Phone number : \_\_\_\_\_ Email (optional): \_\_\_\_\_

**THE WINNING BIDDER MUST COMPLETE THE VERIFICATION OF WORKER'S DISABILITY COMPENSATION ACT COMPLIANCE (ON REVERSE SIDE IF DOUBLE SIDED) WITHIN 21 DAYS OF SALE AWARD DATE**



<b>FOR DEPARTMENT USE ONLY</b>
Sale Number (XX - XXX - XX - XX)
Forest Management Unit:

## TIMBER SALE VERIFICATION OF WORKER'S DISABILITY COMPENSATION ACT COMPLIANCE

*As required by Act 317, P.A. 1969 (Worker's Compensation) and  
Part 5 of Act 451 of 1994, as amended.*

### VERIFICATION OF WORKER'S DISABILITY COMPENSATION ACT COMPLIANCE

- This verification must be completed and submitted within 21 days of contract award and prior to the issuance of the timber sale contract.
- In addition, if boxes 2B or 2C are checked, then Notice of Exclusion or Certificate of Insurance must be submitted within twenty-one (21) days of the contract award and prior to the issuance of the timber sale contract.
- All information must be typed or printed except for written signatures.

Please Check Appropriate Categories:

1. My business is organized as (you **must** check one of the boxes below):
  - A.  Sole Proprietorship (individual)
  - B.  Partnership
  - C.  Corporation
  
2. You **must** check one of the boxes below:
  - A.  I certify my business is a sole proprietorship and it has no employees but the sole proprietor. I am not subject to the Worker's Compensation Laws.
  - B.  I certify my business has satisfied its obligation to the Worker's Compensation Act through the use of an approved Notice of Exclusion (BWC-337, Rev. 5/96). I will provide a copy of the Notice of Exclusion within 21 days of the contract award. (For questions or a copy of the BWC-337, please call the Worker's Compensation Bureau at 517-322-1195).
  - C.  I certify my business has a Worker's Compensation Policy. I will provide an original Certificate of Insurance within twenty-one (21) days of the contract award.
  
3. If you have checked item 2(A) or 2(B), you **must** indicate the number of **both** full-time and part-time employees, other than yourself, including family members and active partners (if none, you must enter "0").

\_\_\_\_\_ Full-time Employees

\_\_\_\_\_ Part-time Employees

Name of Business		Federal ID (or) Social Security No.	
Address		Telephone (       )	
City	State	ZIP	

*I hereby certify that the above information is true and correct. I agree to notify the Michigan DNR of any changes that occur in factors affecting my coverage during any of my present and future operations.*

\_\_\_\_\_  
Signature of Owner or Authorized Representative

\_\_\_\_\_  
Title

\_\_\_\_\_  
Date

**Please complete the "SEALED BID" information on the next page**



Down Stream Mix (61-162-16)  
 ; Kalkaska COUNTY

In response to the notice of sale to be held 4:00 p.m. (local time) on December 12, 2016, I am hereby submitting my sealed bid (firm offer) for the following forest products to be cut. Bids for individual species must be at or above the advertised price. All non-responsive bid forms may be rejected.

<u>PRODUCTS &amp; SPECIES</u>	<u>ESTIMATED VOLUME*</u>	<u>ADVERTISED PRICE</u>	<u>BID PRICE</u>
<b>Sawtimber</b>			
Basswood	2.20 MBF	\$ 82.00/MBF	\$ _____
Black Cherry	0.50 MBF	\$ 208.00/MBF	\$ _____
Paper Birch	8.10 MBF	\$ 36.00/MBF	\$ _____
Red Maple	117.20 MBF	\$ 127.00/MBF	\$ _____
Red Pine	150.50 MBF	\$ 97.00/MBF	\$ _____
White Pine	158.80 MBF	\$ 69.00/MBF	\$ _____
<b>Pulpwood</b>			
Balsam Fir	227.00 Cords	\$ 12.60/Cord	\$ _____
Black Spruce	205.00 Cords	\$ 20.35/Cord	\$ _____
Jack Pine	22.00 Cords	\$ 8.70/Cord	\$ _____
Mixed Aspen	337.00 Cords	\$ 17.00/Cord	\$ _____
Mixed Hardwood	657.00 Cords	\$ 16.85/Cord	\$ _____
Red Pine	139.00 Cords	\$ 31.50/Cord	\$ _____
Tamarack	29.00 Cords	\$ 15.60/Cord	\$ _____
White Pine	278.00 Cords	\$ 14.00/Cord	\$ _____
White Spruce	7.00 Cords	\$ 20.35/Cord	\$ _____

\*The volumes are statistically estimated within plus (+) or minus (-) 6.85 percent. These estimated volumes are final and not subject to adjustment. Prospective bidders are urged to examine this timber and to make their own estimates of quantity and quality.

I understand that any or all bids may be rejected. All bids must be signed and all bid items must be bid or the bid form may be rejected. I also understand that consideration and awarding a contract will be based upon my past performance and ability to complete the contract based upon equipment and staffing subject to my control.

FEDERAL ID: \_\_\_\_\_ or SOCIAL SECURITY NUMBER: \_\_\_\_\_

Company or individual bidding: \_\_\_\_\_

Company representative's name: \_\_\_\_\_

Address: \_\_\_\_\_

City: \_\_\_\_\_ State: \_\_\_\_\_ Zip: \_\_\_\_\_

IF AVAILABLE, PLEASE PLACE THE PERSONALIZED LABEL FROM YOUR PROSPECTUS IN THE ABOVE BOX.

Individual or company representative's signature: \_\_\_\_\_ Date: \_\_\_\_\_

Phone number : \_\_\_\_\_ Email (optional): \_\_\_\_\_

**THE WINNING BIDDER MUST COMPLETE THE VERIFICATION OF WORKER'S DISABILITY COMPENSATION ACT COMPLIANCE (ON REVERSE SIDE IF DOUBLE SIDED) WITHIN 21 DAYS OF SALE AWARD DATE**



FOR DEPARTMENT USE ONLY	
Sale Number (XX - XXX - XX - XX)	
Forest Management Unit:	

# TIMBER SALE VERIFICATION OF WORKER'S DISABILITY COMPENSATION ACT COMPLIANCE

As required by Act 317, P.A. 1969 (Worker's Compensation) and  
Part 5 of Act 451 of 1994, as amended.

## VERIFICATION OF WORKER'S DISABILITY COMPENSATION ACT COMPLIANCE

- This verification must be completed and submitted within 21 days of contract award and prior to the issuance of the timber sale contract.
- In addition, if boxes 2B or 2C are checked, then Notice of Exclusion or Certificate of Insurance must be submitted within twenty-one (21) days of the contract award and prior to the issuance of the timber sale contract.
- All information must be typed or printed except for written signatures.

Please Check Appropriate Categories:

1. My business is organized as (you **must** check one of the boxes below):
  - A.  Sole Proprietorship (individual)
  - B.  Partnership
  - C.  Corporation
2. You **must** check one of the boxes below:
  - A.  I certify my business is a sole proprietorship and it has no employees but the sole proprietor. I am not subject to the Worker's Compensation Laws.
  - B.  I certify my business has satisfied its obligation to the Worker's Compensation Act through the use of an approved Notice of Exclusion (BWC-337, Rev. 5/96). I will provide a copy of the Notice of Exclusion within 21 days of the contract award. (For questions or a copy of the BWC-337, please call the Worker's Compensation Bureau at 517-322-1195).
  - C.  I certify my business has a Worker's Compensation Policy. I will provide an original Certificate of Insurance within twenty-one (21) days of the contract award.
3. If you have checked item 2(A) or 2(B), you **must** indicate the number of **both** full-time and part-time employees, other than yourself, including family members and active partners (if none, you must enter "0").

\_\_\_\_\_ Full-time Employees

\_\_\_\_\_ Part-time Employees

Name of Business		Federal ID (or) Social Security No.	
Address		Telephone (       )	
City	State	ZIP	

*I hereby certify that the above information is true and correct. I agree to notify the Michigan DNR of any changes that occur in factors affecting my coverage during any of my present and future operations.*

\_\_\_\_\_  
Signature of Owner or Authorized Representative

\_\_\_\_\_  
Title

\_\_\_\_\_  
Date

Please complete the "SEALED BID" information on the next page

WWGD Red Pine (61-157-16)  
 ; Kalkaska COUNTY

In response to the notice of sale to be held 4:00 p.m. (local time) on December 12, 2016, I am hereby submitting my sealed bid (firm offer) for the following forest products to be cut. Bids for individual species must be at or above the advertised price. All non-responsive bid forms may be rejected.

<u>PRODUCTS &amp; SPECIES</u>	<u>ESTIMATED VOLUME*</u>	<u>ADVERTISED PRICE</u>	<u>BID PRICE</u>
<b>Sawtimber</b>			
Red Maple	12.10 MBF	\$ 148.00/MBF	\$ _____
Red Oak	24.90 MBF	\$ 212.00/MBF	\$ _____
Red Pine	826.70 MBF	\$ 113.00/MBF	\$ _____
White Pine	85.40 MBF	\$ 81.00/MBF	\$ _____
<b>Pulpwood</b>			
Jack Pine	157.00 Cords	\$ 10.15/Cord	\$ _____
Mixed Aspen	176.00 Cords	\$ 19.80/Cord	\$ _____
Mixed Hardwood	247.00 Cords	\$ 19.65/Cord	\$ _____
Red Oak	87.00 Cords	\$ 14.55/Cord	\$ _____
Red Pine	801.00 Cords	\$ 36.75/Cord	\$ _____
White Pine	257.00 Cords	\$ 16.35/Cord	\$ _____

\*The volumes are statistically estimated within plus (+) or minus (-) 11.37 percent. These estimated volumes are final and not subject to adjustment. Prospective bidders are urged to examine this timber and to make their own estimates of quantity and quality.

I understand that any or all bids may be rejected. All bids must be signed and all bid items must be bid or the bid form may be rejected. I also understand that consideration and awarding a contract will be based upon my past performance and ability to complete the contract based upon equipment and staffing subject to my control.

FEDERAL ID: \_\_\_\_\_ or SOCIAL SECURITY NUMBER: \_\_\_\_\_

Company or individual bidding: \_\_\_\_\_

Company representative's name: \_\_\_\_\_

Address: \_\_\_\_\_

City: \_\_\_\_\_ State: \_\_\_\_\_ Zip: \_\_\_\_\_

IF AVAILABLE, PLEASE PLACE THE PERSONALIZED LABEL FROM YOUR PROSPECTUS IN THE ABOVE BOX.

Individual or company representative's signature: \_\_\_\_\_ Date: \_\_\_\_\_

Phone number : \_\_\_\_\_ Email (optional): \_\_\_\_\_

**THE WINNING BIDDER MUST COMPLETE THE VERIFICATION OF WORKER'S DISABILITY COMPENSATION ACT COMPLIANCE (ON REVERSE SIDE IF DOUBLE SIDED) WITHIN 21 DAYS OF SALE AWARD DATE**



<b>FOR DEPARTMENT USE ONLY</b>
Sale Number (XX - XXX - XX - XX)
Forest Management Unit:

## TIMBER SALE VERIFICATION OF WORKER'S DISABILITY COMPENSATION ACT COMPLIANCE

*As required by Act 317, P.A. 1969 (Worker's Compensation) and  
Part 5 of Act 451 of 1994, as amended.*

### VERIFICATION OF WORKER'S DISABILITY COMPENSATION ACT COMPLIANCE

- This verification must be completed and submitted within 21 days of contract award and prior to the issuance of the timber sale contract.
- In addition, if boxes 2B or 2C are checked, then Notice of Exclusion or Certificate of Insurance must be submitted within twenty-one (21) days of the contract award and prior to the issuance of the timber sale contract.
- All information must be typed or printed except for written signatures.

Please Check Appropriate Categories:

1. My business is organized as (you **must** check one of the boxes below):
  - A.  Sole Proprietorship (individual)
  - B.  Partnership
  - C.  Corporation
  
2. You **must** check one of the boxes below:
  - A.  I certify my business is a sole proprietorship and it has no employees but the sole proprietor. I am not subject to the Worker's Compensation Laws.
  - B.  I certify my business has satisfied its obligation to the Worker's Compensation Act through the use of an approved Notice of Exclusion (BWC-337, Rev. 5/96). I will provide a copy of the Notice of Exclusion within 21 days of the contract award. (For questions or a copy of the BWC-337, please call the Worker's Compensation Bureau at 517-322-1195).
  - C.  I certify my business has a Worker's Compensation Policy. I will provide an original Certificate of Insurance within twenty-one (21) days of the contract award.
  
3. If you have checked item 2(A) or 2(B), you **must** indicate the number of **both** full-time and part-time employees, other than yourself, including family members and active partners (if none, you must enter "0").

\_\_\_\_\_ Full-time Employees

\_\_\_\_\_ Part-time Employees

Name of Business		Federal ID (or) Social Security No.	
Address		Telephone (       )	
City	State	ZIP	

*I hereby certify that the above information is true and correct. I agree to notify the Michigan DNR of any changes that occur in factors affecting my coverage during any of my present and future operations.*

\_\_\_\_\_  
Signature of Owner or Authorized Representative

\_\_\_\_\_  
Title

\_\_\_\_\_  
Date

**Please complete the "SEALED BID" information on the next page**

Occidental Mix (61-158-16)  
 ; Kalkaska COUNTY

In response to the notice of sale to be held 4:00 p.m. (local time) on December 12, 2016, I am hereby submitting my sealed bid (firm offer) for the following forest products to be cut. Bids for individual species must be at or above the advertised price. All non-responsive bid forms may be rejected.

<u>PRODUCTS &amp; SPECIES</u>	<u>ESTIMATED VOLUME*</u>	<u>ADVERTISED PRICE</u>	<u>BID PRICE</u>
<b>Sawtimber</b>			
Black Cherry	1.40 MBF	\$ 277.00/MBF	\$ _____
Red Maple	10.10 MBF	\$ 170.00/MBF	\$ _____
Red Pine	316.30 MBF	\$ 130.00/MBF	\$ _____
Sugar Maple	14.80 MBF	\$ 303.00/MBF	\$ _____
White Pine	20.00 MBF	\$ 92.00/MBF	\$ _____
<b>Pulpwood</b>			
Balsam Fir	3.00 Cords	\$ 16.80/Cord	\$ _____
Jack Pine	8.00 Cords	\$ 11.60/Cord	\$ _____
Mixed Aspen	134.00 Cords	\$ 22.65/Cord	\$ _____
Mixed Hardwood	527.00 Cords	\$ 22.45/Cord	\$ _____
Red Pine	1,606.00 Cords	\$ 42.00/Cord	\$ _____
White Pine	55.00 Cords	\$ 18.65/Cord	\$ _____

\*The volumes are statistically estimated within plus (+) or minus (-) 7.47 percent. These estimated volumes are final and not subject to adjustment. Prospective bidders are urged to examine this timber and to make their own estimates of quantity and quality.

I understand that any or all bids may be rejected. All bids must be signed and all bid items must be bid or the bid form may be rejected. I also understand that consideration and awarding a contract will be based upon my past performance and ability to complete the contract based upon equipment and staffing subject to my control.

FEDERAL ID: \_\_\_\_\_ or SOCIAL SECURITY NUMBER: \_\_\_\_\_

Company or individual bidding: \_\_\_\_\_

Company representative's name: \_\_\_\_\_

Address: \_\_\_\_\_

City: \_\_\_\_\_ State: \_\_\_\_\_ Zip: \_\_\_\_\_

IF AVAILABLE, PLEASE PLACE THE PERSONALIZED LABEL FROM YOUR PROSPECTUS IN THE ABOVE BOX.

Individual or company representative's signature: \_\_\_\_\_ Date: \_\_\_\_\_

Phone number : \_\_\_\_\_ Email (optional): \_\_\_\_\_

**THE WINNING BIDDER MUST COMPLETE THE VERIFICATION OF WORKER'S DISABILITY COMPENSATION ACT COMPLIANCE (ON REVERSE SIDE IF DOUBLE SIDED) WITHIN 21 DAYS OF SALE AWARD DATE**



FOR DEPARTMENT USE ONLY	
Sale Number (XX - XXX - XX - XX)	
Forest Management Unit:	

## TIMBER SALE VERIFICATION OF WORKER'S DISABILITY COMPENSATION ACT COMPLIANCE

As required by Act 317, P.A. 1969 (Worker's Compensation) and  
Part 5 of Act 451 of 1994, as amended.

### VERIFICATION OF WORKER'S DISABILITY COMPENSATION ACT COMPLIANCE

- This verification must be completed and submitted within 21 days of contract award and prior to the issuance of the timber sale contract.
- In addition, if boxes 2B or 2C are checked, then Notice of Exclusion or Certificate of Insurance must be submitted within twenty-one (21) days of the contract award and prior to the issuance of the timber sale contract.
- All information must be typed or printed except for written signatures.

Please Check Appropriate Categories:

1. My business is organized as (you **must** check one of the boxes below):
  - A.  Sole Proprietorship (individual)
  - B.  Partnership
  - C.  Corporation
2. You **must** check one of the boxes below:
  - A.  I certify my business is a sole proprietorship and it has no employees but the sole proprietor. I am not subject to the Worker's Compensation Laws.
  - B.  I certify my business has satisfied its obligation to the Worker's Compensation Act through the use of an approved Notice of Exclusion (BWC-337, Rev. 5/96). I will provide a copy of the Notice of Exclusion within 21 days of the contract award. (For questions or a copy of the BWC-337, please call the Worker's Compensation Bureau at 517-322-1195).
  - C.  I certify my business has a Worker's Compensation Policy. I will provide an original Certificate of Insurance within twenty-one (21) days of the contract award.
3. If you have checked item 2(A) or 2(B), you **must** indicate the number of **both** full-time and part-time employees, other than yourself, including family members and active partners (if none, you must enter "0").

\_\_\_\_\_ Full-time Employees

\_\_\_\_\_ Part-time Employees

Name of Business		Federal ID (or) Social Security No.	
Address		Telephone (       )	
City	State	ZIP	

*I hereby certify that the above information is true and correct. I agree to notify the Michigan DNR of any changes that occur in factors affecting my coverage during any of my present and future operations.*

\_\_\_\_\_  
Signature of Owner or Authorized Representative

\_\_\_\_\_  
Title

\_\_\_\_\_  
Date

Please complete the "SEALED BID" information on the next page