



**DEPARTMENT OF NATURAL RESOURCES
STATE OF MICHIGAN**

TIMBER SALE PROSPECTUS #5863

SCHEDULED SALE DATE AND TIME: 4:00 p.m. (local time) on May 1, 2017.

LOCATION: KALKASKA FIELD OFFICE, 2089 N BIRCH ST, KALKASKA, MI 49646.

PROSPECTUS NOTE: The bidder is advised to inspect the sale area and review the location, estimated volumes, operating costs and contract terms of proposed sales. Please be aware that some landowners may request 60 days or more notice for access across their land.

Notice is hereby given that bids will be received by the Unit Manager, TRAVERSE CITY MANAGEMENT UNIT, for certain timber on the following described lands:

Lake Effect Hardwoods (61-104-17)

Kalkaska County, Advertised Price \$197,596.40, 389.7 Acres, Aspen, Hardwood.

SALE NOTE: Parts of the timber sale area are on steep terrain.

A recreation site such as a trail, pathway, or campground is within the sale area or the vicinity. Certain restrictions/specifications may be applicable including time restrictions.

Salvage Strips (61-107-17)

Kalkaska County, Advertised Price \$23,486.65, 42.5 Acres, Hardwood, Red Oak.

MWR Comp 110 Hardwoods (61-108-17)

Kalkaska County, Advertised Price \$37,473.75, 30.7 Acres, Hardwood, Sugar Maple.

SALE NOTE: Hardwood research project Sale, short sale duration. Tops need to be pulled off site or chipped. One free 5% extension can be applied to another state timber sale held by the purchaser that is set to expire within one year (see Spec 7.2.7). Cut all trees 2" and up except for those marked with green paint and do not cut boundary trees.

A recreation site such as a trail, pathway, or campground is within the sale area or the vicinity. Certain restrictions/specifications may be applicable including time restrictions.

Sop Sops KW Jack Pine (61-115-17)

Crawford County, Advertised Price \$91,087.40, 583.2 Acres, Jack Pine, Red Pine.

SALE NOTE: This sale is being cut to create habitat for the endangered Kirtland's warbler. It must be chip harvested. Unit 5 is approximately 20-year-old jack pine which will only be valuable as chips. Please note that it is being sold by the acre. There will be no extensions of this contract due to the planting schedule. There is a horse trail that uses Waterfowl Road. Contact the sale administrator to discuss permitted trail ride dates to minimize conflicts.

A recreation site such as a trail, pathway, or campground is within the sale area or the vicinity. Certain restrictions/specifications may be applicable including time restrictions.

KING RED ADD-ON (61-113-16) / T26N, R05W, SEC. 30, S1/2SW, NESW.

Kalkaska County, Advertised Price \$11,186.65, 20.0 Acres, Jack Pine, Red Pine.

BID INSTRUCTIONS (VER. 09/02/2016):

1. Scheduled Bid Location, Date, and Time (2/11)

Bids must be received by the Unit Manager, KALKASKA OFFICE, 2089 N BIRCH ST, KALKASKA, MI 49646, no later than 4:00 p.m. (local time) on May 1, 2017. For further information concerning this sale, contact David Lemmien at 231-922-5280 extension 6840.

2. Bidder's Qualifications (5/16)

Purchaser shall obtain workers compensation insurance to cover claims under Michigan's Worker's Disability Compensation Act of 1969 or similar employee benefit act of any other state applicable to an employee. If all or part of a timber sale was prepared by a private contractor, the contractor and that contractor's company are not permitted to bid on the timber sale contract. Bids will not be accepted from individuals or companies appearing on the DNR/FRD No-Bid List. This list contains the names of purchasers who previously failed to execute a contract within 21-days or who have a history of poor performance.

3. Preparation of Sealed Bids (5/16)

Bid Forms may be completed online thru Michigan DNR Timber Sale Online Bidding (OLB) at www.michigan.gov/timberbidding or by completing the hardcopy Bid Form found in the Timber Sale Prospectus. Hardcopy Bid Forms shall be manually signed in ink. Registration in OLB is considered your 'signature' for all bids submitted thru that system. Bid prices must be entered for each species and product in the Bid Price column for all material subject to bidding and all fill-in blanks must be completed. If erasures or other changes appear on the hardcopy Bid Form, each erasure or change must be initialed by the person signing the bid.

4. Submission of Sealed Bids (5/16)

Bid forms may be obtained from the Unit Manager or thru OLB. Bids may be submitted hardcopy or thru OLB. All hardcopy bids must be submitted on the bid form and in an envelope clearly identified as described in this section. NOTE: Only one bid form per bid envelope. Sealed bids must be submitted to the Unit office designated in the prospectus and must be submitted at or prior to the time established in the prospectus. The envelope should show on the outside (a) the sale name or number and (b) the date and time of bid opening, as shown in the prospectus. Bids received after the time specified in the sale prospectus are late bids and will be rejected.

It is possible for a bidder to submit multiple bids on a single sale. For example, a bid may be submitted hardcopy and a bid may be submitted thru OLB. Or, two bidders from the same company could both submit bids on the same sale. If this were to happen, the State would accept all bids received and award the contract accordingly. All bidding and contractual requirements would apply to all bids received.

5. Public Opening of Sealed Bids (7/16)

If conditions permit, the sealed bids will be publicly opened and posted at the time and place set in the prospectus.

If a bidder, present at a bid opening, has submitted bids on more than one sale, that bidder may withdraw their unopened bid envelopes or announce the withdrawal of their online bid after being declared the successful bidder on one sale.

6. Award of Contract (1/11)

Award of the contract will be made to the Bidder whose bid, conforming to the prospectus, is most advantageous to the State of Michigan on the basis of total value at rates bid for the estimated quantities. The State reserves the right to reject any bid or waive any minor irregularity in bids received. A written award mailed (or otherwise furnished) to the successful Bidder shall be deemed to result in a binding contract without further action by either party.

7. Down Payment (1/11)

The Bidder to whom award is made must make a down payment within 21 days of the sale award. The amount of the down payment will be calculated as shown in the Bond and Payment Schedule of this prospectus. Only cash may be used to meet this requirement.

8. Performance Security (1/11)

As guarantee of faithful performance, a cash bond, certificate of deposit, surety bond or irrevocable letter of credit (LOC) is required within 21 days of the sale award. The amount of the performance security is shown in the Bond and

Payment Schedule of this prospectus. If an LOC or surety is used, the coverage must extend for at least 6 months beyond the contract expiration.

9. Timber Sale Contract (9/14)

Additional conditions and requirements common to all timber sales are listed on the timber sale contract (R4031) and are available on line at www.michigan.gov/timber. Contact the Unit Manager for additional information or a sample contract. Within 21 days of the date of the award letter, the bidder must sign the contract and provide the required down payment, performance security, and verification of worker's disability compensation. The down payment and performance security shall be in accordance with the provisions of the timber sale contract, in the sums stated in this prospectus. If these actions are not taken, then the Bidder, the Bidder's corporation, and the corporation's principals may not be permitted to bid on State timber sales for a period of 1 year. In addition, the Bidder certifies that if awarded this contract, the Bidder will complete the timber sale contract in accordance with its terms and any modifications thereof including requirements to purchase, cut, and remove the included timber by the expiration date.

10. Disclaimer of Estimates and Bidder's Warranty of Inspection (7/16)

Before submitting this bid, the Bidder is advised and cautioned to inspect the sale area, review the requirements of the sale contract, and take other steps as may be reasonably necessary to ascertain the location, estimated volumes, construction estimates, and operating costs of the proposed sale. Failure to do so will not relieve the Bidder from responsibility for completing the contract.

The Bidder warrants that this bid is submitted solely on the basis of the Bidder's examination and inspection of the quality and quantity of the timber offered for sale and the Bidder's opinion of the value thereof and the costs of recovery. No reliance should be placed on the State of Michigan's estimates of timber quality, quantity or costs of recovery. Bidder further acknowledges that the State of Michigan: (i) expressly disclaims any warranty of fitness of timber for any purpose; (ii) offers this timber as is without any warranty of quality (merchantability) or quantity and (iii) expressly disclaims any warranty as to the quantity or quality of timber sold.

11. Certification and Chain-of-Custody (10/14)

Unless otherwise indicated in the contract under section 7 – Other Conditions of the Sale Specific Conditions & Requirements, the area encompassed by this timber sale is certified to the standards of the Forest Stewardship Council (FSC) - Certificate #SCS-FM/COC-00090N and the Sustainable Forestry Initiative (SFI) - Certificate # NSF-SFIS-5Y031-SF5. Forest products from this sale may be delivered to the mill as "FSC 100% and / or SFI certified" as long as the contractor hauling the forest products is chain-of-custody (COC) certified or covered under a COC certificate from the destination mill. The purchaser is responsible for maintaining COC after leaving the sale area.

12. Good Neighbor Authority (GNA) Requirements (7/16)

If the name of this timber sales contains the acronym GNA, it is authorized by the Good Neighbor Authority (GNA) and covered by various agreements between the U.S. Forest Service and the State. The timber sale occurs on federal land and the following conditions apply:

GNA contracts on US Forest Service land will not be awarded to purchasers on the Federal list of excluded parties. The System for Award Management (SAM) will be checked for active excluded parties prior to award of contract. In addition, the Bidder to whom award is made must complete an Assurance Regarding Felony Conviction or Tax Delinquent Status for Corporate Applicants (AD-3031).

13. Good Neighbor Authority (GNA) Requirements, con't (9/16)

Bidder certifies, by signing this bid form, that to the best of Bidder's knowledge that the following representations are accurate and complete.

- a. That the Bidder and its principals are not presently debarred, suspended, proposed for debarment, declared ineligible, or voluntary excluded from timber sales (covered transactions) by any Federal department or agency.
- b. That the Bidder and its principals have not within a 3-year period preceding this bid been convicted of or had a civil judgment rendered against them for commission of fraud or a criminal offense in connection with obtaining, attempting to obtain, or performing a public (Federal, State, or local) transaction or contract under a public transaction; violation of Federal or State antitrust statutes or commission of embezzlement, theft, forgery, bribery, falsification or destruction of records, making false statements, or receiving stolen property.

c. That the Bidder and its principals are not presently indicted for or otherwise criminally or civilly charged by a governmental entity (Federal, State, or local) with commission of any of the offenses enumerated in paragraph b of this certification.

d. That the Bidder and its principals have not within a 3-year period preceding this bid had one or more public transactions (Federal, State, or local) terminated for breach or default of a timber or forest product contract.

Bidders that cannot certify this requirement, in whole or in part, shall submit an explanation with their bid.

KEITH CREAGH

Director

TIMBER SALE INFORMATION

Lake Effect Hardwoods (61-104-17)

Kalkaska County (Advertised Price \$197,596.40)

SALE NOTE: Parts of the timber sale area are on steep terrain.

A recreation site such as a trail, pathway, or campground is within the sale area or the vicinity. Certain restrictions/specifications may be applicable including time restrictions.

A timber sale contract for this lump sum, sealed bid timber sale will be awarded to the responsible bidder offering the highest sealed bid price. Bids must be at or above the following advertised price for each species:

<u>PRODUCTS & SPECIES</u>	<u>ESTIMATED UNITS*</u>	<u>ADVERTISED PRICE</u>
Sawtimber		
Basswood	396.10 MBF	\$ 97.00 / MBF
Beech	110.50 MBF	\$ 96.00 / MBF
Black Cherry	1.70 MBF	\$ 196.00 / MBF
Mixed Aspen	132.60 MBF	\$ 106.00 / MBF
Paper Birch	0.50 MBF	\$ 33.00 / MBF
Red Maple	144.90 MBF	\$ 133.00 / MBF
Red Pine	31.20 MBF	\$ 104.00 / MBF
Sugar Maple	120.70 MBF	\$ 296.00 / MBF
Pulpwood		
Basswood	984.00 Cords	\$ 13.25 / Cord
Beech	663.00 Cords	\$ 17.25 / Cord
Mixed Aspen	594.00 Cords	\$ 21.25 / Cord
Mixed Hardwood	2,045.00 Cords	\$ 17.25 / Cord
Red Pine	99.00 Cords	\$ 35.80 / Cord

* The total volume is statistically estimated within plus (+) or minus (-) 8.85 percent. The estimated units are final and not subject to adjustment. Prospective bidders are urged to examine this timber and to make their own estimates of quantity and quality.

BOND AND PAYMENT SCHEDULE:

1. A bond in the amount of \$19,760.00 to insure faithful performance of the conditions of the contract will be deposited by the successful bidder within 21 days of the sale award.
2. Cutting in any sale or unit without the required advance payment would be considered a trespass.
3. Total payment must be paid in advance or according to the following schedule:
 - (a) Ten percent (10%) of the sale value must be paid within 21 days of the sale award.
 - (b) The 10% down payment will be credited towards the first unit cut.
4. If no cutting takes place, the 10% down payment will not be refunded.
5. Operations on the contract issued will terminate on 06/30/2020.

Description of Timber by Payment Unit (PU)

PU	MARKET GROUP	PRODUCT	QUANTITY	UNIT	ACRES	ADVERTISE PRICE	
1	Basswood	Sawtimber	28.5	MBF	61.0	\$29,993.50	
	Beech		15.4	MBF			
	Mixed Aspen		44.9	MBF			
	<i>B. T. Aspen</i>		44.9	<i>MBF</i>			
	Red Maple		21.1	MBF			
	Sugar Maple		23.4	MBF			
	Basswood		Pulpwood	63.0			Cords
	Beech			81.0			Cords
	Mixed Aspen			109.0			Cords
	<i>B. T. Aspen</i>			102.0			<i>Cords</i>
	<i>Quaking Aspen</i>	7.0		<i>Cords</i>			
	Mixed Hardwood	389.0		Cords			
	<i>Black Cherry</i>	20.0	<i>Cords</i>				
	<i>Ironwood</i>	34.0	<i>Cords</i>				
	<i>Red Maple</i>	140.0	<i>Cords</i>				
	<i>Sugar Maple</i>	195.0	<i>Cords</i>				
2	Basswood	Sawtimber	57.7	MBF	55.7	\$23,594.45	
	Beech		6.2	MBF			
	Red Maple		19.7	MBF			
	Sugar Maple		20.0	MBF			
	Basswood		Pulpwood	189.0			Cords
	Beech			75.0			Cords
	Mixed Aspen			37.0			Cords
	<i>Quaking Aspen</i>			37.0			<i>Cords</i>
	Mixed Hardwood			248.0			Cords
	<i>Ironwood</i>			19.0			<i>Cords</i>
	<i>Red Maple</i>			69.0			<i>Cords</i>
	<i>Sugar Maple</i>			160.0			<i>Cords</i>
3	Basswood	Sawtimber	43.9	MBF	47.4	\$17,307.75	
	Beech		5.0	MBF			
	Mixed Aspen		12.2	MBF			
	<i>B. T. Aspen</i>		12.2	<i>MBF</i>			
	Sugar Maple		16.5	MBF			
	Basswood		Pulpwood	110.0			Cords
	Beech			15.0			Cords
	Mixed Aspen			65.0			Cords
	<i>B. T. Aspen</i>			31.0			<i>Cords</i>
	<i>Quaking Aspen</i>			34.0			<i>Cords</i>
	Mixed Hardwood			191.0			Cords
	<i>Ironwood</i>			14.0			<i>Cords</i>
	<i>Sugar Maple</i>			177.0			<i>Cords</i>
4	Basswood	Sawtimber	78.6	MBF	58.1	\$23,555.50	
	Beech		6.0	MBF			
	Mixed Aspen		0.9	MBF			
	<i>B. T. Aspen</i>		0.9	<i>MBF</i>			
	Red Maple		6.3	MBF			
	Sugar Maple		14.0	MBF			
	Basswood		Pulpwood	313.0			Cords
	Beech			50.0			Cords
	Mixed Aspen			19.0			Cords
	<i>B. T. Aspen</i>			19.0			<i>Cords</i>
	Mixed Hardwood			282.0			Cords
	<i>Ironwood</i>			16.0			<i>Cords</i>
	<i>Misc. Species 2</i>			2.0			<i>Cords</i>
	<i>Red Maple</i>			12.0			<i>Cords</i>
	<i>Sugar Maple</i>			252.0			<i>Cords</i>

Description of Timber by Payment Unit (PU), con't

PU	MARKET GROUP	PRODUCT	QUANTITY	UNIT	ACRES	ADVERTISE PRICE
5	Beech Black Cherry Mixed Aspen <i>B. T. Aspen</i> Paper Birch Red Maple Red Pine	Sawtimber	1.1	MBF	21.0	\$20,204.10
			1.7	MBF		
			47.8	MBF		
			47.8	<i>MBF</i>		
			0.5	MBF		
			11.0	MBF		
		Pulpwood	31.2	MBF		
			2.0	Cords		
			193.0	Cords		
			193.0	<i>Cords</i>		
			133.0	Cords		
			12.0	<i>Cords</i>		
			3.0	<i>Cords</i>		
			111.0	<i>Cords</i>		
			7.0	<i>Cords</i>		
99.0	Cords					
6	Basswood Beech Mixed Aspen <i>B. T. Aspen</i> Red Maple Sugar Maple Basswood Beech Mixed Aspen <i>B. T. Aspen</i> Mixed Hardwood <i>Ironwood</i> <i>Red Maple</i> <i>Sugar Maple</i>	Sawtimber	39.2	MBF	37.3	\$23,661.05
			26.0	MBF		
			3.0	MBF		
			3.0	<i>MBF</i>		
			33.4	MBF		
			16.7	MBF		
		Pulpwood	97.0	Cords		
			55.0	Cords		
			41.0	Cords		
			41.0	<i>Cords</i>		
			264.0	Cords		
			8.0	<i>Cords</i>		
			78.0	<i>Cords</i>		
			178.0	<i>Cords</i>		
7	Basswood Beech Mixed Aspen <i>B. T. Aspen</i> Red Maple Sugar Maple Basswood Beech Mixed Aspen <i>B. T. Aspen</i> Mixed Hardwood <i>Ironwood</i> <i>Red Maple</i> <i>Sugar Maple</i>	Sawtimber	49.8	MBF	34.9	\$18,227.15
			15.8	MBF		
			8.8	MBF		
			8.8	<i>MBF</i>		
			21.4	MBF		
			5.5	MBF		
		Pulpwood	70.0	Cords		
			70.0	Cords		
			71.0	Cords		
			71.0	<i>Cords</i>		
			164.0	Cords		
			10.0	<i>Cords</i>		
			84.0	<i>Cords</i>		
			70.0	<i>Cords</i>		
8	Basswood Beech Mixed Aspen <i>B. T. Aspen</i> Sugar Maple Basswood Beech Mixed Aspen <i>B. T. Aspen</i> Mixed Hardwood <i>Ironwood</i> <i>Red Maple</i>	Sawtimber	94.5	MBF	37.1	\$24,190.65
			11.7	MBF		
			12.9	MBF		
			12.9	<i>MBF</i>		
			15.3	MBF		
			131.0	Cords		
		Pulpwood	176.0	Cords		
			32.0	Cords		
			32.0	<i>Cords</i>		
			148.0	Cords		
			2.0	<i>Cords</i>		
			16.0	<i>Cords</i>		

Description of Timber by Payment Unit (PU), con't

PU	MARKET GROUP	PRODUCT	QUANTITY	UNIT	ACRES	ADVERTISE PRICE
8 con't	<i>Sugar Maple</i>	<i>Pulpwood</i>	130.0	<i>Cords</i>		
9	Basswood	Sawtimber	3.9	MBF	37.2	\$16,862.25
	Beech		23.3	MBF		
	Mixed Aspen		2.1	MBF		
	<i>B. T. Aspen</i>		1.3	<i>MBF</i>		
	<i>Quaking Aspen</i>		0.8	<i>MBF</i>		
	Red Maple		32.0	MBF		
	Sugar Maple		9.3	MBF		
	Basswood	Pulpwood	11.0	Cords		
	Beech		139.0	Cords		
	Mixed Aspen		27.0	Cords		
	<i>B. T. Aspen</i>		5.0	<i>Cords</i>		
	<i>Quaking Aspen</i>		22.0	<i>Cords</i>		
	Mixed Hardwood		226.0	Cords		
	<i>Ironwood</i>		9.0	<i>Cords</i>		
	<i>Red Maple</i>		120.0	<i>Cords</i>		
	<i>Sugar Maple</i>		97.0	<i>Cords</i>		
TOTAL:			938.2	MBF		
TOTAL:			4,385.0	Cords		

Sale Specific Conditions & Requirements

Sale Name: Lake Effect Hardwoods

Sale Number: 61-104-17 Seq#: 1

1 - Sale Area

1.2 - Boundaries

1.2.1 - Painted boundaries (1/14)

The sale boundary and Payment Unit boundaries are marked and identified by blue, red and yellow paint. Exterior sale boundary lines against private property are marked with blue paint. Exterior sale boundary lines against state are marked with red paint. Interior Payment Unit boundaries are marked with yellow paint. The painted boundary line trees and unit line trees are not Included Timber and are to be protected unless marked with orange paint.

2 - Timber Specifications

2.1 - Included Timber

2.1.3 - Cut tree marked unit(s) (12/08)

Within Payment Unit(s) 1, 2, 3, 4, 6, 7, 8 and 9, all trees are designated for cutting when marked with orange paint above and below stump height, regardless of merchantability. In addition, cut all ironwood, aspen, and beech trees unless they are marked with an orange 'X'.

2.1.4 - Species designation unit(s) (12/08)

Within Payment Unit(s) 5, all aspen, ironwood, red maple, and cherry trees that are greater than 4 inches in diameter are designated for cutting. Also, cut all trees marked with orange paint.

2.2 - Utilization

2.2.4 - Skidding length (2/14)

Skidding of unlimbed tops or lengths over 17 feet is not permissible unless approved by the Unit Manager or his/her representative.

3 - Payments

3.3 - Pre-measured Sales

3.3.4 - Dividing payment units (7/14)

Payment Unit(s) with a value of \$10,000 or more may be divided at the request of the Purchaser and upon approval of the Unit Manager. Dividing Payment Units is a contract modification which requires a Timber Sale Contract Supplement. There will be only one division per Payment Unit.

4 - Transportation

4.1 - Construction

4.1.6 - Road construction (1/09)

Construction of new roads or improvements of existing roads shall be done in such a way as to minimize the environmental and visual impacts. Merchantable trees shall be cut and utilized unless otherwise directed. Non-merchantable trees shall be severed and laid flat on the ground. Slash shall be scattered, and not left in windrows and kept a minimum of 10 feet back from the road edge. Stumps shall be set upright, not left on edge, and be moved at least 10 feet away from the road edge. Disturbed soil shall be feathered into the woods and not left in berms or windrows.

4.1.7 - Road closure (10/11)

All new roads built into the sale must be blocked to vehicle traffic within 30 days of completion of hauling. Overgrown roads that are reopened shall be considered new roads. In general, this will require constructing a four (4') foot high berm of stumps and logs covered with earth. Stumps and brush must be placed along the remainder of the trail. These roads must be rendered impassable to cars and trucks. Temporary berms may be required if no sale activity occurs for 30 or more consecutive days. Contact the sale administrator for specific details of design and placement.

5 - Operations

5.1 - Notification

5.1.1 - Pre-sale conference (10/16)

A pre-sale conference between the Purchaser and sale administrator is required prior to beginning any operations to determine landing and road locations. The Unit Manager or his/her representative must be contacted at least 3 days in advance to schedule the conference.

5.1.3 - Well heads and natural gas pipelines (11/15)

The Purchaser is responsible for contacting the gas or pipeline company 10 days prior to operating equipment in the vicinity of well heads or natural gas pipelines. Contact Lee Able with Merit Energy at 231-258-6404.

5.1.4 - Post-sale conference (10/16)

A post-sale conference on site between the Purchaser and sale administrator is required 5 days prior to the completion of active logging operations to determine clean-up and repair of landings, road edges, and the fulfillment of other contract specifications.

5.2 - Conduct of Operations

5.2.1 - Slash

5.2.1.8 - Slash height (12/08)

No slash or tree tops may exceed 24 inches in height.

5.2.3 - Operating Restrictions

5.2.3.3 - Bark slippage restriction (3/09)

Within Payment Unit(s) 1, 2, 3, 4, 6, 7, 8 and 9, cutting and skidding are not permitted during the period of April 15 to July 15. This restriction is because of bark slippage.

5.2.32 - Decking/landing restoration (9/13)

All decking and landing areas must have the surface area restored to a condition equal to or better than before. This is to ensure the proper regeneration of the stand.

5.2.37 - No decking areas (12/08)

No decking is allowed along the snowmobile trail.

5.2.39 - ORV trail/route protection (12/12)

There is an ORV trail and route and is shown on the Timber Sale Map. Do not cut trees or damage posts with orange ORV markers. All stumps within 5 feet of the trail must be cut flush with the ground. Maintain a 20 foot wide slash, debris, and rut free zone daily using the ORV trail or route as the centerline. Do not run equipment down the ORV trail or route. Skidding across the trail or route may only occur in locations approved by the sale administrator.

5.2.40 - Pathway protection (10/10)

The North Country Trail is a hiking trail and is shown on the Timber Sale Map. Do not cut trees or damage posts with blue pathway markers. Maintain a 20-foot wide slash, debris, and rut free zone daily, using the pathway as the centerline. Do not run equipment down the pathway. Skidding across the trail may only occur in locations approved by the sale administrator.

5.2.41 - Snowmobile trail protection (9/11)

There is a snowmobile trail and is shown on the Timber Sale Map. Do not cut or damage posts with orange trail markers or traffic control signs. If the trail is used, it must be maintained and restored to a condition equal to or better than before the sale. If the trail road is to be used for hauling during the snowmobile season, then a snow covered base must be left on the trail. Maintain a 20 foot wide slash, debris, and rut free zone daily using the snowmobile trail as the centerline. No decking of forest products will be permitted along the snowmobile trail. All stumps within 20 feet of the snowmobile trail must be cut at ground level. In addition, any trees cut within 5 feet of the trail must have the stumps removed and be disposed of according to the direction of the Unit Manager or his/her representative.

5.4 - Soil Protection

5.4.1 - Rutting restriction, general (7/16)

Operations are to cease immediately if equipment and weather conditions result in rutting of roads and/or skid trails which is 12 inches or greater in depth and 50 feet in length. In addition, operations are to cease immediately if equipment and weather

conditions result in rutting on skid trails which is 12 inches or greater in depth and 50 feet in length. The Unit Manager or his/her representative may restrict hauling and/or skidding if ruts exceed the specified depth. With the Unit Manager or his/her representative's approval, the Purchaser may return to the area when the risk of rutting has decreased.

5.4.4 - Slope protection (5/15)

Skid trails and roads on slopes shall be water barred with slash, stumps, and/or clean straw bales native to the area as soon as use is complete to prevent erosion.

5.8 - Protection of Endangered Species

5.8.5 - Protection of raptor nests (3/13)

All trees with raptor nests will be protected if found during harvesting operations. Notification will be made to the Unit Manager or his/her representative who will notify the Wildlife Biologist so an on-site evaluation and recommendation can be made, if necessary.

6 - Safety and Fire Prevention

6.2 - Signing

6.2.1 - Road posting (9/09)

The Purchaser is responsible for posting and maintaining caution signs on haul roads prior to beginning operations. The road must be posted at appropriate distances from the sale area to warn of logging activity and truck traffic. Signs must be removed when harvest operations are suspended or completed. The Purchaser will provide these signs.

6.2.3 - Recreational trail posting (2/10)

The Purchaser is responsible for posting and maintaining caution signs on ORV trails and snowmobile trail prior to beginning operations. The trail must be posted at appropriate distances from the sale area to warn of logging activity and truck traffic at both ends of the trail. Signs must be removed when harvest operations are suspended or completed. The Purchaser will provide these signs.



TIMBER SALE MAP

This information provided by authority of Part 525, 1994 PA 451, as amended.

Sale Number	Year
61 - 104	17

Forest Management Unit Traverse City		County Kalkaska	Mapped By Crigier	Date 12/12/2016	Page 1	of 1
Township 28N	Range 5W	Section(s) and Subdivision(s) 8: NE1/4, SE1/4, SW1/4 9: NW1/4, NWSW		Scale 1:15,840		

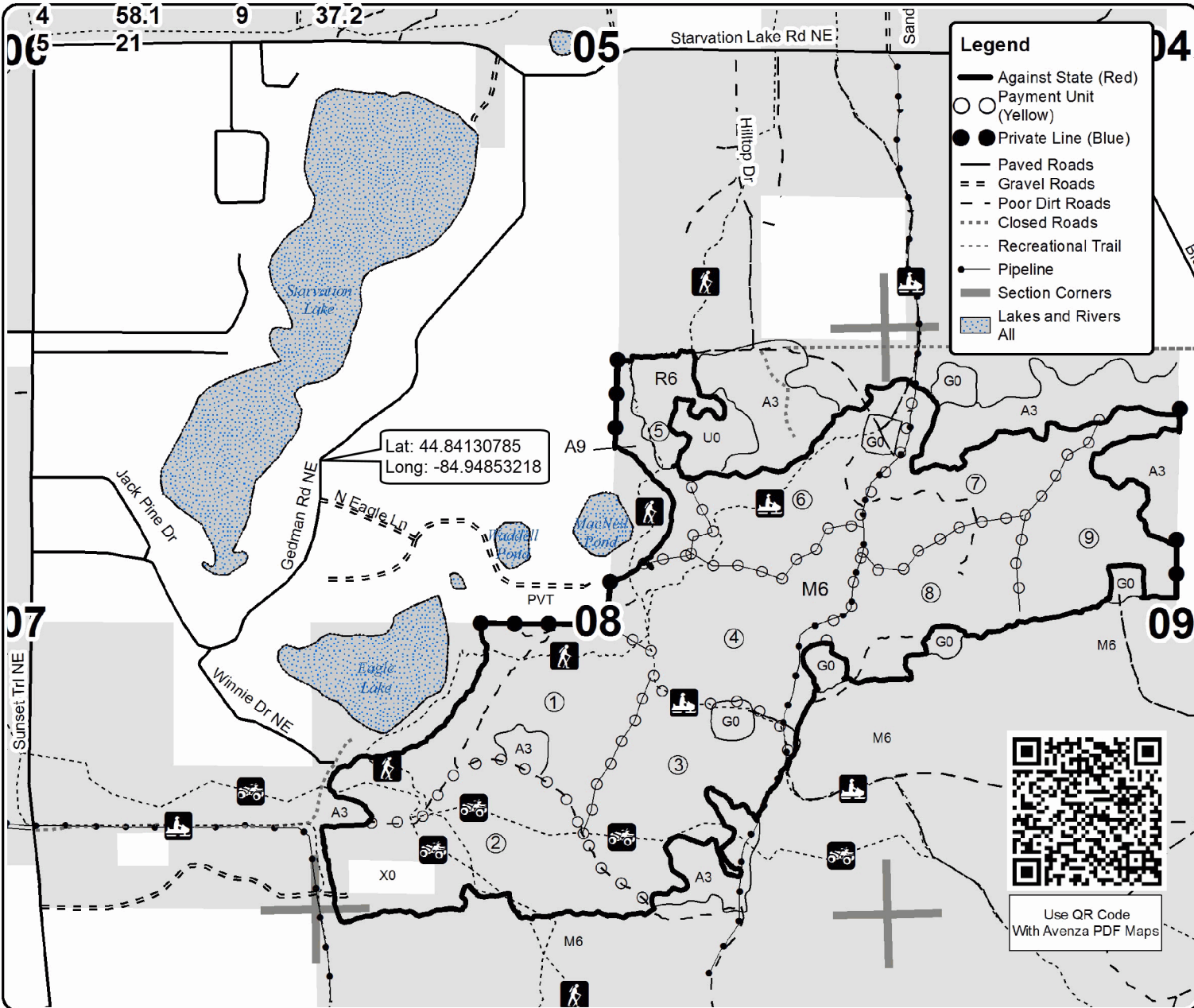
Cover Type				Density			
A = Aspen	H = Hemlock	N = Marsh	U = Upland Brush	0 = Non Stocked	5 = Pole Timber Medium		
B = Paper Birch	J = Jack Pine	O = Oak	UM = Upland Mixed	1 = Seedling Sapling Poor	6 = Pole Timber Well		
C = Cedar	L = Lowland Brush	P = Lowland Poplar	V = Bog or Marsh	2 = Seedling Sapling Medium	7 = Saw Timber Poor		
D = Treed Bog	LM = Lowland Mixed	Q = Mixed Swamp Conifer	W = White Pine	3 = Seedling Sapling Well	8 = Saw Timber Medium		
E = Swamp Hdwoods	M = Mpl, Bch, Brch	R = Red Pine	X = Non Stocked	4 = Pole Timber Poor	9 = Saw Timber Well		
F = Spruce Fir	MC = Mixed Conifer	S = Black Spruce	Z = Water				
G = Grass	MD = Mixed Deciduous	T = Tamarack					

PU	Acres	PU	Acres
1	61	6	37.3
2	55.7	7	34.9
3	47.4	8	37.1
4	58.1	9	37.2

Lake Effect Hardwoods

Compartment 102

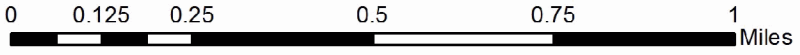
389.7 Acres



Lat: 44.84130785
Long: -84.94853218



Use QR Code
With Avenza PDF Maps



TIMBER SALE INFORMATION

Salvage Strips (61-107-17)

Kalkaska County (Advertised Price \$23,486.65)

A timber sale contract for this lump sum, sealed bid timber sale will be awarded to the responsible bidder offering the highest sealed bid price. Bids must be at or above the following advertised price for each species:

<u>PRODUCTS & SPECIES</u>	<u>ESTIMATED UNITS*</u>	<u>ADVERTISED PRICE</u>
Sawtimber		
Red Maple	1.20 MBF	\$ 143.00 / MBF
Red Oak	75.40 MBF	\$ 232.00 / MBF
White Oak	17.20 MBF	\$ 60.00 / MBF
Pulpwood		
Misc. Species 1	37.00 Cords	\$ 3.75 / Cord
Red Maple	7.00 Cords	\$ 18.50 / Cord
Red Oak	190.00 Cords	\$ 14.00 / Cord
White Oak	133.00 Cords	\$ 14.00 / Cord

* The total volume is statistically estimated within plus (+) or minus (-) 26.84 percent. The estimated units are final and not subject to adjustment. Prospective bidders are urged to examine this timber and to make their own estimates of quantity and quality.

BOND AND PAYMENT SCHEDULE:

1. A bond in the amount of \$2,114.00 to insure faithful performance of the conditions of the contract will be deposited by the successful bidder within 21 days of the sale award.
2. Cutting in any sale or unit without the required advance payment would be considered a trespass.
3. Total payment must be paid in advance or according to the following schedule:
 - (a) Ten percent (10%) of the sale value must be paid within 21 days of the sale award.
 - (b) The remainder is due before cutting begins.
4. If no cutting takes place, the 10% down payment will not be refunded.
5. Operations on the contract issued will terminate on 06/30/2019.

Description of Timber by Payment Unit (PU)

PU	MARKET GROUP	PRODUCT	QUANTITY	UNIT	ACRES	ADVERTISE PRICE
1	Red Maple	Sawtimber	1.2	MBF	42.5	\$23,486.65
	Red Oak		75.4	MBF		
	White Oak		17.2	MBF		
	Misc. Species 1	Pulpwood	37.0	Cords		
	Red Maple		7.0	Cords		
	Red Oak		190.0	Cords		
	White Oak		133.0	Cords		
TOTAL:			93.8	MBF		
TOTAL:			367.0	Cords		

Sale Specific Conditions & Requirements

Sale Name: Salvage Strips

Sale Number: 61-107-17 Seq#: 1

1 - Sale Area

1.2 - Boundaries

1.2.1 - Painted boundaries (1/14)

The sale boundary is marked and identified by red paint. Exterior sale boundary lines against state are marked and identified with red paint. The painted boundary line trees are not Included Timber and are to be protected.

2 - Timber Specifications

2.1 - Included Timber

2.1.1 - Clearcut unit(s) with unmerchantable trees (6/14)

Within Payment Unit(s) 1, cut all trees that are two (2) inches or more at DBH.

2.1.11 - Description of timber note (2/04)

Note that Misc Species 1 is dead oak which may be cut throughout the sale.

2.2 - Utilization

2.2.2 - Chipping required (5/14)

Payment Unit 1 must be chip harvested to facilitate future silvicultural activities. The Purchaser has the option to produce sawlogs or pulpwood bolts, but the remaining portion of the trees must be chipped and hauled. Products may be produced as roundwood and forwarded to decking areas in final product length, but the tops must be left intact and skidded to the landing for chipping in order to minimize the amount of residual slash left in Military training areas. Do not chip 1/6 to 1/3 of the slash from harvested trees (tree tops and limbs less than four inches in diameter).

2.2.3 - Stump heights (4/07)

Stump heights within Payment Units 1 shall not exceed 8 inches for trees greater than 10 inches DBH and 4 inches for trees smaller than 10 inches DBH.

3 - Payments

3.3 - Pre-measured Sales

3.3.4 - Dividing payment units (7/14)

Payment Unit(s) 1 may be divided at the request of the Purchaser and upon approval of the Unit Manager. Dividing Payment Units is a contract modification which requires a Timber Sale Contract Supplement. There will be a maximum of one division per Payment Unit.

4 - Transportation

4.1 - Construction

4.1.6 - Road construction (1/09)

Construction of new roads or improvements of existing roads shall be done in such a way as to minimize the environmental and visual impacts. Merchantable trees shall be cut and utilized unless otherwise directed. Non-merchantable trees shall be severed and laid flat on the ground. Slash shall be chipped, scattered, and not left in windrows and kept a minimum of 10 feet back from the road edge. Stumps shall be set upright, not left on edge, and be moved at least 10 feet away from the road edge. Disturbed soil shall be feathered into the woods and not left in berms or windrows.

4.1.7 - Road closure (10/11)

All new roads built into the sale must be blocked to vehicle traffic within 30 days of completion of hauling. Overgrown roads that are reopened shall be considered new roads. In general, this will require constructing a four (4') foot high berm of stumps and logs covered with earth. All stumps from road building and landing construction should be reserved to block any newly constructed roads upon completion of the sale. Temporary berms may be required if no sale activity occurs for 30 or more consecutive days. Contact the sale administrator for specific details of design and placement.

4.2 - Maintenance

4.2.3 - Road maintenance (8/13)

The following road maintenance may be needed: gravel or fill on sandy roads, or the Purchaser may find it more efficient to haul in winter.

5 - Operations

5.1 - Notification

5.1.1 - Pre-sale conference (10/16)

A pre-sale conference on site between the Purchaser and sale administrator is required prior to beginning any operations to determine landing and road locations. The Unit Manager or his/her representative must be contacted at least 3 days in advance to schedule the conference.

5.1.4 - Post-sale conference (10/16)

A post-sale conference on site between the Purchaser and sale administrator is required 5 days prior to the completion of active logging operations to determine clean-up and repair of landings, road edges, and the fulfillment of other contract specifications.

5.2 - Conduct of Operations

5.2.2 - Hazard Trees/Snags

5.2.2.1 - Den trees (10/16)

Obvious hollow and/or den trees shall be protected and left standing unless they are a safety hazard.

5.2.3 - Operating Restrictions

5.2.3.4 - Oak wilt restriction (6/10)

Within Payment Unit(s) 1 cutting, skidding, and hauling are not permitted during the period of April 15 to July 15. This is necessary to reduce the spread of oak wilt. For more information, contact the Unit Manager or his/her representative.

5.2.3.11 - Coppice regeneration protection (4/10)

Timber harvesting in any Payment Unit must be completed before significant aspen sprouting occurs in that Payment Unit so as to minimize damage to the new regeneration. Any post-harvest operations, such as chipping, must be completed before sprouting of regeneration occurs. If it is anticipated that chipping will be delayed, then tops shall be carried to one central location or left unchipped. The Unit Manager or sale administrator may cease such operations if sprouting occurs before the operation is complete.

5.2.32 - Decking/landing restoration (9/13)

All decking and landing areas must have the surface area restored to a condition equal to or better than before. This is to ensure the proper regeneration of the stand. Wood debris, chips and "cookies" from trimmings must be removed or scattered away from landing and loading areas and may not be windrowed on the edge.

5.2.38 - No decking against live trees (2/04)

Cut products may not be decked against unmarked or designated leave trees.

5.4 - Soil Protection

5.4.1 - Rutting restriction, general (7/16)

Operations are to cease immediately if equipment and weather conditions result in rutting of roads and/or skid trails which is 12 inches or greater in depth and 50 feet in length. The Unit Manager or his/her representative may restrict hauling and/or skidding if ruts exceed the specified depth. With the Unit Manager or his/her representative's approval, the Purchaser may return to the area when the risk of rutting has decreased.

6 - Safety and Fire Prevention

6.2 - Signing

6.2.1 - Road posting (9/09)

The Purchaser is responsible for posting and maintaining caution signs on haul roads prior to beginning operations. The road

must be posted at appropriate distances from the sale area to warn of logging activity and truck traffic. Signs must be removed when harvest operations are suspended or completed. The Purchaser will provide these signs.

7 - Other Conditions

7.5 - Loss

7.5.1 - Deteriorating timber (7/09)

The sale area has received damage from gypsy moth and much of the oak is dead or dying. The Purchaser should harvest the wood as soon as possible. The Department of Natural Resources is held free of responsibility of any further damage or deterioration due to delay in harvesting.



TIMBER SALE MAP

This information provided by authority of Pari 525, 1994 PA 451, as amended.

Sale Number	Year
61-107	17

Forest Management Unit Traverse City	County Kalkaska	Mapped By Roell	Date 12/14/2016	Page 1	of 1
		Cruised By Roell			

Township 25N	Range 05W	Section(s) and Subdivision(s) W1/2NE, E1/2NW, NWNW Sec 14	Scale 1:15,840
-----------------	--------------	--	-------------------

Cover Type

A = Aspen	H = Hemlock	N = Marsh	U = Upland Brush
B = Paper Birch	J = Jack Pine	O = Oak	UM = Upland Mixed
C = Cedar	L = Lowland Brush	P = Lowland Poplar	V = Bog or Marsh
D = Treed Bog	LM = Lowland Mixed	Q = Mixed Swamp Conifer	W = White Pine
E = Swamp Hdwoods	M = Mpl. Bch. Birch	R = Red Pine	X = Non Stocked
F = Spruce Fir	MC = Mixed Conifer	S = Black Spruce	Z = Water
G = Grass	MD = Mixed Deciduous	T = Tamarack	

Density

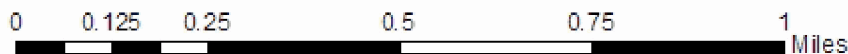
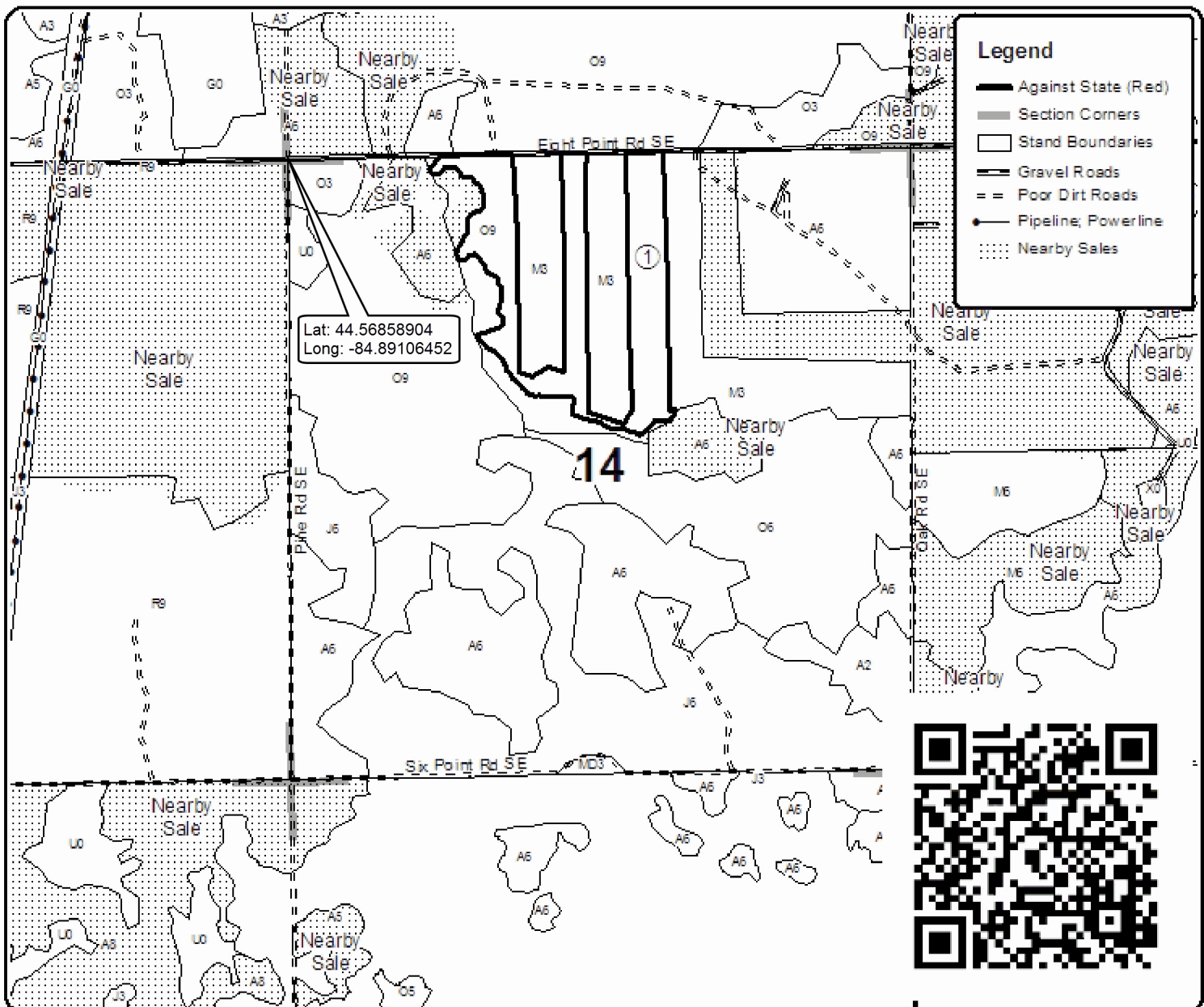
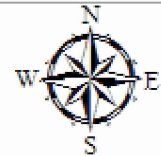
0 = Non Stocked	5 = Pole Timber Medium
1 = Seeding Sapling Poor	6 = Pole Timber Well
2 = Seeding Sapling Medium	7 = Saw Timber Poor
3 = Seeding Sapling Well	8 = Saw Timber Medium
4 = Pole Timber Poor	9 = Saw Timber Well

PU Acres
1 42.5

Salvage Strips

Compartment 140

42.5 Acres



TIMBER SALE INFORMATION

MWR Comp 110 Hardwoods (61-108-17)

Kalkaska County (Advertised Price \$37,473.75)

SALE NOTE: Hardwood research project Sale, short sale duration. Tops need to be pulled off site or chipped. One free 5% extension can be applied to another state timber sale held by the purchaser that is set to expire within one year (see Spec 7.2.7). Cut all trees 2" and up except for those marked with green paint and do not cut boundary trees.

A recreation site such as a trail, pathway, or campground is within the sale area or the vicinity. Certain restrictions/specifications may be applicable including time restrictions.

A timber sale contract for this lump sum, sealed bid timber sale will be awarded to the responsible bidder offering the highest sealed bid price. Bids must be at or above the following advertised price for each species:

<u>PRODUCTS & SPECIES</u>	<u>ESTIMATED UNITS*</u>	<u>ADVERTISED PRICE</u>
Sawtimber		
Beech	41.90 MBF	\$ 75.00 / MBF
Red Maple	16.10 MBF	\$ 105.00 / MBF
Red Oak	2.10 MBF	\$ 170.00 / MBF
Sugar Maple	116.40 MBF	\$ 233.00 / MBF
Pulpwood		
Mixed Hardwood	381.00 Cords	\$ 13.55 / Cord

* The total volume is statistically estimated within plus (+) or minus (-) 17.69 percent. The estimated units are final and not subject to adjustment. Prospective bidders are urged to examine this timber and to make their own estimates of quantity and quality.

BOND AND PAYMENT SCHEDULE:

1. A bond in the amount of \$3,747.00 to insure faithful performance of the conditions of the contract will be deposited by the successful bidder within 21 days of the sale award.
2. Cutting in any sale or unit without the required advance payment would be considered a trespass.
3. Total payment must be paid in advance or according to the following schedule:
 - (a) Ten percent (10%) of the sale value must be paid within 21 days of the sale award.
 - (b) The remainder is due before cutting begins.
4. If no cutting takes place, the 10% down payment will not be refunded.
5. Operations on the contract issued will terminate on 06/30/2018.

Description of Timber by Payment Unit (PU)

PU	MARKET GROUP	PRODUCT	QUANTITY	UNIT	ACRES	ADVERTISE PRICE
1	Beech	Sawtimber	41.9	MBF	30.7	\$37,473.75
	Red Maple		16.1	MBF		
	Red Oak		2.1	MBF		
	Sugar Maple		116.4	MBF		
	Mixed Hardwood	Pulpwood	381.0	Cords		
	<i>Beech</i>		108.0	<i>Cords</i>		
	<i>Red Maple</i>		21.0	<i>Cords</i>		
	<i>Red Oak</i>		6.0	<i>Cords</i>		
	<i>Sugar Maple</i>		246.0	<i>Cords</i>		
TOTAL:			176.5	MBF		
TOTAL:			381.0	Cords		

Sale Specific Conditions & Requirements

Sale Name: MWR Comp 110 Hardwoods

Sale Number: 61-108-17 Seq#: 1

1 - Sale Area

1.2 - Boundaries

1.2.1 - Painted boundaries (1/14)

Exterior sale boundary lines against state land are marked with red paint. The painted boundary line trees are not Included Timber and are to be protected.

2 - Timber Specifications

2.1 - Included Timber

2.1.7 - Leave tree marked unit(s) (6/14)

Within Payment Unit(s) 1, all trees over 2" DBH are designated for cutting except DO NOT cut or damage trees marked with green paint above and below stump height.

2.2 - Utilization

2.2.2 - Chipping required (5/14)

This area must be chip harvested to facilitate follow up scarification. Products may be produced as roundwood and forwarded to decking areas in final product length, but the tops must be left intact and skidded to the landing for chipping in order to minimize the amount of residual slash left in research area areas. If the producer decides that chipping is not desirable they have the option to forward all of tops and brush out of the payment unit as directed by the sale administrator. Chipping or slash removal must be completed by March 15th 2018. If the deadline is not met, damages will be collected as a rate determined by the cost for the Department to hire a contractor to complete the chipping or removal of the tops from the sale area. The requirement to retain approximately 1/6 to 1/3 of tree tops and limbs less than four inches in diameter does not apply (G. C. & R. 2.2). This is due to the research nature of this sale.

2.2.3 - Stump heights (4/07)

Stump heights within the sale area stumps shall not exceed 12 inches for trees greater than 10 inches DBH and 4 inches for trees smaller than 10 inches DBH. A written waiver of this requirement may be obtained if snow levels make these heights unobtainable.

2.2.8 - Utilization and removal (5/14)

Payment Unit 1 is part of a research project. All slash and all forest products meeting standards set forth in General Condition and Requirement 2.2 - Utilization must be removed from the sale area. The slash must be chipped unless another option is negotiated with the Unit Manager or their representative to reduce, eliminate, and/or disperse the slash into the surrounding area. Chipping or slash removal must be completed by March 15th 2018. This is because of the research nature of this project.

3 - Payments

3.4 - Damaged Timber

3.4.1 - Damaged timber (6/14)

General Condition and Requirement 3.4 Damaged Timber, defines liquidated damages for undesignated live merchantable trees which are cut or injured. No damage is acceptable to residual merchantable trees. Within the sale area, if more than 5% of trees (> 4.5" DBH) within a specified area of the sale are damaged, liquidated damages will be assessed for all trees damaged. Rates will be in accordance with General Condition and Requirement 3.4 Damaged Timber, or at a rate of \$50 per sawtimber tree and \$5 per pole sized tree, whichever is greater.

4 - Transportation

4.1 - Construction

4.1.3 - Slash and earthen piles (8/04)

Piles or windrows of earth along roads and landings that have been widened or constructed shall be leveled. Slash from road

maintenance or construction, including stumps, shall be chipped, utilized or otherwise removed from the sale.

4.1.12 - No new roads (1/12)

No new roads will be permitted. Skid trails only will be allowed.

5 - Operations

5.2 - Conduct of Operations

5.2.3 - Operating Restrictions

5.2.3.1 - Operating restrictions (9/11)

Within Payment Unit(s) 1, operations must begin by February 1, 2018. This restriction is due to the necessity of assuring that all operations are on schedule for timely completion of the research project.

5.2.3.2 - Operating restrictions (9/11)

Within Payment Unit(s) 1, unless changed by written agreement, cutting and skidding is limited to the period from August 15, 2017 to March 15, 2018. This restriction is to meet the requirements of a silviculture research project.

5.2.38 - No decking against live trees (2/04)

Cut products may not be decked against unmarked or designated leave trees.

5.2.41 - Snowmobile trail protection (9/11)

The snowmobile trail is shown on the Timber Sale Map. Do not cut or damage posts with orange trail markers or traffic control signs. If the trail is used, it must be maintained and restored to a condition equal to or better than before the sale. If the trail is used for hauling, it must be graded to the satisfaction of the Unit Manager or his/her representative within 30 days of completion of hauling. If the trail road is to be used for hauling during the snowmobile season, then a snow covered base must be left on the trail.

6 - Safety and Fire Prevention

6.2 - Signing

6.2.2 - Snowmobile trail posting (8/09)

The Purchaser is responsible for posting and maintaining caution signs on the snowmobile trail prior to beginning operations during the snowmobile season (approximately December 1 to March 31). The trail must be posted at appropriate distances from the sale area to warn of logging activity and truck traffic. Signs must be removed when harvest operations are suspended or completed. The Purchaser will provide these signs.

7 - Other Conditions

7.2 - Extensions

7.2.7 - Research extension (12/16)

This is a research sale with a short contract length. The sale must be harvested promptly. One (1), twelve (12) month extension can be applied to one (1) other State Forest Timber Sale Contract owned by the purchaser or owned by one (1) designated sub-contractor of the Purchaser that works this contract. To qualify, the contract expiration date of the contract to be extended must be within twelve (12) months from the issue date of this contract. If this is the first extension on the other State Forest Timber Sale Contract, then the 5% extension fee will be waived. If this is an additional extension, the 10% fee will be reduced to 5%. The salvage extension must be used before this contract is closed-out. This specification does not alleviate the purchaser from any contractual obligations of the extended State Forest Timber Sale Contract. Per General Condition & Requirement 7.2, extensions are at the sole discretion of the DNR.



TIMBER SALE MAP

This information provided by authority of Part 525, 1994 PA 451, as amended.

Forest Management Unit Traverse City	County Kalkaska	Mapped By Armstrong	Date 1/18/2017	Page 1	of 1
Township 27N	Range 5W	Section(s) and Subdivision(s) Section 2: SENW	Scale 1:15,840		
		Cruised By Crigier & Standerfer			

Cover Type				Density	
A = Aspen	H = Hemlock	N = Marsh	U = Upland Brush	0 = Non Stocked	5 = Pole Timber Medium
B = Paper Birch	J = Jack Pine	O = Oak	UM = Upland Mixed	1 = Seedling Sapling Poor	6 = Pole Timber Well
C = Cedar	L = Lowland Brush	P = Lowland Poplar	V = Bog or Marsh	2 = Seedling Sapling Medium	7 = Saw Timber Poor
D = Treed Bog	LM = Lowland Mixed	Q = Mixed Swamp Conifer	W = White Pine	3 = Seedling Sapling Well	8 = Saw Timber Medium
E = Swamp Hdwoods	M = Mpl, Bch, Brch	R = Red Pine	X = Non Stocked	4 = Pole Timber Poor	9 = Saw Timber Well
F = Spruce Fir	MC = Mixed Conifer	S = Black Spruce	Z = Water		
G = Grass	MD = Mixed Deciduous	T = Tamarack			

MWR Comp 110 Hardwoods



Legend

Sale Boundary

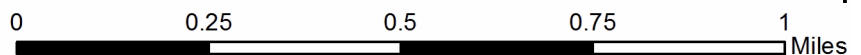
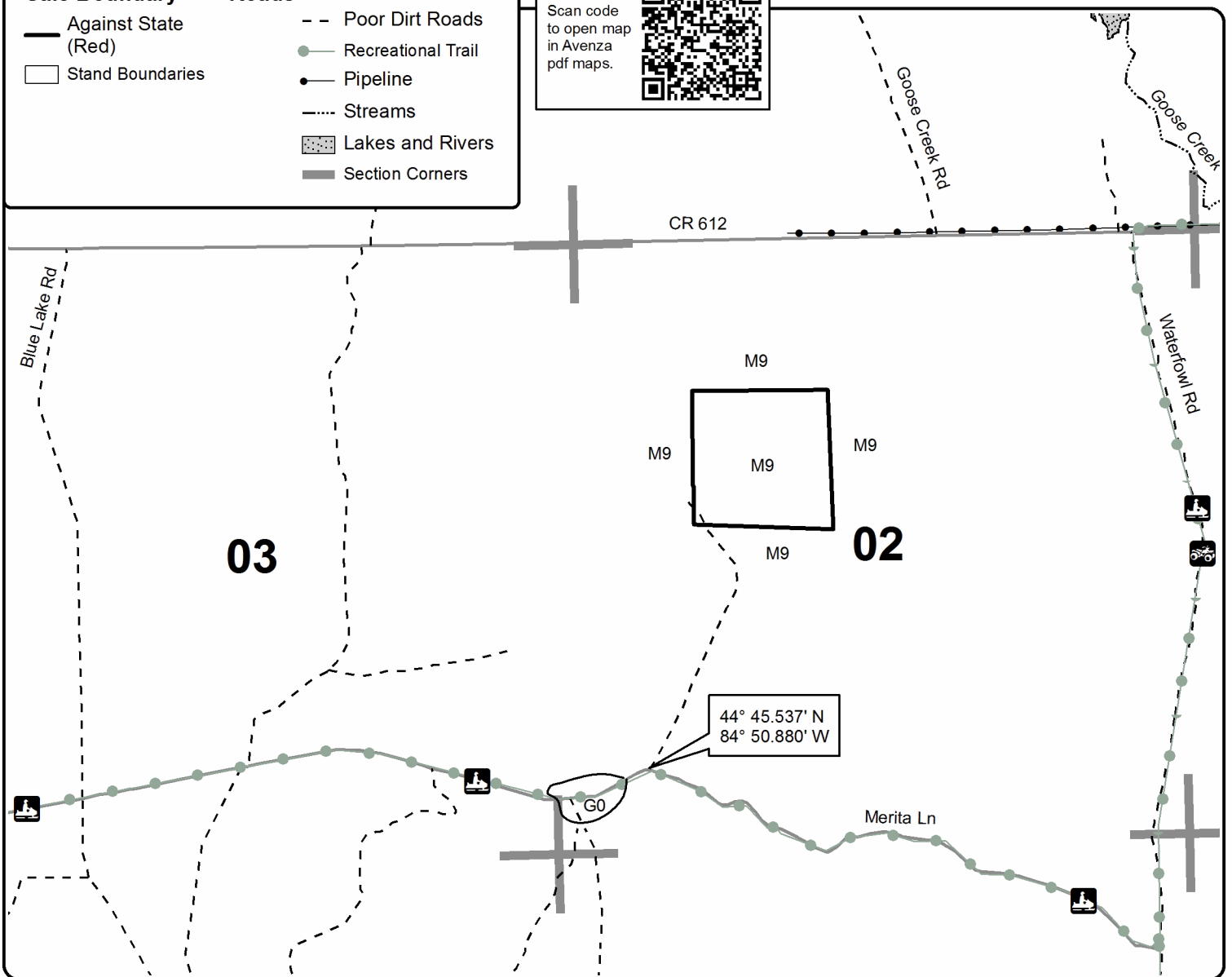
- Against State (Red)
- Stand Boundaries

Roads

- Paved Roads
- - - Poor Dirt Roads
- Recreational Trail
- Pipeline
- · - · - Streams
- ▨ Lakes and Rivers
- Section Corners

30.7 acres

Scan code to open map in Avenza pdf maps.



TIMBER SALE INFORMATION

Sop Sops KW Jack Pine (61-115-17)

Crawford County (Advertised Price \$91,087.40)

SALE NOTE: This sale is being cut to create habitat for the endangered Kirtland's warbler. It must be chip harvested. Unit 5 is approximately 20-year-old jack pine which will only be valuable as chips. Please note that it is being sold by the acre. There will be no extensions of this contract due to the planting schedule. There is a horse trail that uses Waterfowl Road. Contact the sale administrator to discuss permitted trail ride dates to minimize conflicts.

A recreation site such as a trail, pathway, or campground is within the sale area or the vicinity. Certain restrictions/specifications may be applicable including time restrictions.

A timber sale contract for this lump sum, sealed bid timber sale will be awarded to the responsible bidder offering the highest sealed bid price. Bids must be at or above the following advertised price for each species:

<u>PRODUCTS & SPECIES</u>	<u>ESTIMATED UNITS*</u>	<u>ADVERTISED PRICE</u>
Sawtimber		
Red Oak	12.80 MBF	\$ 232.00 / MBF
Red Pine	144.90 MBF	\$ 112.00 / MBF
Pulpwood		
Black Cherry	34.00 Cords	\$ 18.50 / Cord
Jack Pine	5,473.00 Cords	\$ 10.70 / Cord
Jack Pine	181.00 Acres	\$ 23.00 / Acre
Misc. Species 2	22.00 Cords	\$ 3.75 / Cord
Quaking Aspen	36.00 Cords	\$ 22.75 / Cord
Red Maple	30.00 Cords	\$ 18.50 / Cord
Red Oak	22.00 Cords	\$ 14.00 / Cord
Red Pine	161.00 Cords	\$ 38.40 / Cord
White Pine	38.00 Cords	\$ 15.50 / Cord

* The total volume is statistically estimated within plus (+) or minus (-) 11.56 percent. The estimated units are final and not subject to adjustment. Prospective bidders are urged to examine this timber and to make their own estimates of quantity and quality.

BOND AND PAYMENT SCHEDULE:

1. A bond in the amount of \$4,554.00 to insure faithful performance of the conditions of the contract will be deposited by the successful bidder within 21 days of the sale award.
2. Cutting in any sale or unit without the required advance payment would be considered a trespass.
3. Total payment must be paid in advance or according to the following schedule:
 - (a) Ten percent (10%) of the sale value must be paid within 21 days of the sale award.
 - (b) The 10% down payment will be credited towards the first unit cut.
4. If no cutting takes place, the 10% down payment will not be refunded.
5. Operations on the contract issued will terminate on 12/31/2019.

Description of Timber by Payment Unit (PU)

PU	MARKET GROUP	PRODUCT	QUANTITY	UNIT	ACRES	ADVERTISE PRICE
1	Red Oak	Sawtimber	12.8	MBF	133.6	\$30,225.80
	Red Pine		35.2	MBF		
	Black Cherry	Pulpwood	26.0	Cords		
	Jack Pine		1,963.0	Cords		
	<i>Jack Pine</i>	<i>Sawtimber</i>	71.0	<i>MBF</i>		
	<i>Jack Pine</i>	<i>Pulpwood</i>	1,821.0	<i>Cords</i>		
	Misc. Species 2		22.0	Cords		
	Red Maple		30.0	Cords		
	Red Oak		22.0	Cords		
	Red Pine		23.0	Cords		
2	Red Pine	Sawtimber	0.1	MBF	100.8	\$13,932.40
	Jack Pine	Pulpwood	1,246.0	Cords		
	<i>Jack Pine</i>	<i>Sawtimber</i>	25.8	<i>MBF</i>		
	<i>Jack Pine</i>	<i>Pulpwood</i>	1,194.0	<i>Cords</i>		
	White Pine		38.0	Cords		
3	Red Pine	Sawtimber	58.5	MBF	128.7	\$31,540.50
	Black Cherry	Pulpwood	8.0	Cords		
	Jack Pine		1,861.0	Cords		
	<i>Jack Pine</i>	<i>Sawtimber</i>	172.5	<i>MBF</i>		
	<i>Jack Pine</i>	<i>Pulpwood</i>	1,516.0	<i>Cords</i>		
	Quaking Aspen		36.0	Cords		
	Red Pine		107.0	Cords		
4	Red Pine	Sawtimber	51.1	MBF	39.1	\$11,236.40
	Jack Pine	Pulpwood	404.0	Cords		
	<i>Jack Pine</i>		404.0	<i>Cords</i>		
	Red Pine		31.0	Cords		
5	Jack Pine	Pulpwood	181.0	Acres	181.0	\$4,163.00
TOTAL:			157.7	MBF		
TOTAL:			5,817.0	Cords		
TOTAL:			181.0	Acres		

Sale Specific Conditions & Requirements

Sale Name: Sop Sops KW Jack Pine

Sale Number: 61-115-17 Seq#: 1

1 - Sale Area

1.2 - Boundaries

1.2.1 - Painted boundaries (1/14)

The sale boundary and Payment Unit boundaries are marked and identified by red and yellow paint. Exterior sale boundary lines against state are marked with red paint. Interior Payment Unit boundaries are marked with yellow paint, with the following exceptions: The boundary between Payment Units 3 & 4 is identified by the pipeline, and the boundary between Payment Units 3 & 5 is identified by the stand line (see Timber Sale Map). The painted boundary line trees are Included Timber and are to be cut. Yellow painted trees designating an interior Payment Unit boundary are only to be cut when all surrounding Payment Units have been paid.

2 - Timber Specifications

2.1 - Included Timber

2.1.1 - Clearcut unit(s) with unmerchantable trees (6/14)

Within Payment Unit(s) 1, 2, 3, 4, and 5, cut all trees that are one (1) inch or more at DBH regardless of merchantability.

2.1.11 - Description of timber note (2/04)

Note that Misc. Species 2 is dead oak, which is designated for cutting. Also note that Payment Unit 5 is approximately 20-year-old jack pine, which will only be valuable as chips.

2.2 - Utilization

2.2.2 - Chipping required (5/14)

This area must be chip harvested to facilitate subsequent planting operations for Kirtland's warbler habitat. The Purchaser has the option to produce sawlogs or pulpwood bolts, but the remaining portion of the trees must be chipped and hauled. Do not chip 1/6 to 1/3 of the slash from harvested trees (tree tops and limbs less than four inches in diameter).

2.2.3 - Stump heights (4/07)

Stump heights within the Sale Area shall not exceed 6 inches for all trees. This is in order to facilitate planting operations.

3 - Payments

3.3 - Pre-measured Sales

3.3.4 - Dividing payment units (7/14)

Payment Unit(s) greater than \$20,000 may be divided at the request of the Purchaser and upon approval of the Unit Manager. Dividing Payment Units is a contract modification which requires a Timber Sale Contract Supplement. There will be only one division per Payment Unit.

4 - Transportation

4.1 - Construction

4.1.6 - Road construction (1/09)

Construction of new roads or improvements of existing roads shall be done in such a way as to minimize the environmental and visual impacts. Merchantable trees shall be cut and utilized unless otherwise directed. Non-merchantable trees shall be severed and laid flat on the ground. Slash shall be chipped, utilized or otherwise removed from the sale. Stumps shall be set upright, not left on edge, and be moved at least 10 feet away from the road edge or used to construct berms. Disturbed soil shall be feathered into the woods and not left in berms or windrows.

4.1.7 - Road closure (10/11)

All new roads built into the sale must be blocked to vehicle traffic within 30 days of completion of hauling. Overgrown roads that are reopened shall be considered new roads. In general, this will require constructing a four (4') foot high berm of stumps and logs covered with earth. These roads must be rendered impassable to cars and trucks. Contact the sale administrator for specific details of design and placement.

5 - Operations

5.1 - Notification

5.1.1 - Pre-sale conference (10/16)

A pre-sale conference on site between the Purchaser and sale administrator is required prior to beginning any operations. The sale administrator must be contacted at least 3 days in advance to schedule the conference.

5.1.3 - Well heads and natural gas pipelines (11/15)

The Purchaser is responsible for contacting the gas or pipeline company prior to operating equipment in the vicinity of well heads or natural gas pipelines. Contact Eric Parrett with TransCanada at 989-588-9958 (main) or 989-339-0789 (cell). TransCanada needs at least 3 weeks notice to armor any necessary pipeline crossings.

5.2 - Conduct of Operations

5.2.32 - Decking/landing restoration (9/13)

All decking and landing areas must have the surface area restored to a condition equal to or better than before. This is to ensure the proper regeneration of the stand. Wood debris, chips and "cookies" from trimmings must be removed or scattered away from landing and loading areas and may not be windrowed on the edge.

5.2.37 - No decking areas (12/08)

No decking is allowed along Waterfowl Road because it is a county road and a horse trail.

5.2.38 - No decking against live trees (2/04)

Cut products may not be decked against unmarked or designated leave trees.

5.4 - Soil Protection

5.4.1 - Rutting restriction, general (7/16)

Operations are to cease immediately if equipment and weather conditions result in rutting of roads and/or skid trails which is 12 inches or greater in depth and 50 feet in length. The Unit Manager or his/her representative may restrict hauling and/or skidding if ruts exceed the specified depth. With the Unit Manager or his/her representative's approval, the Purchaser may return to the area when the risk of rutting has decreased.

5.8 - Protection of Endangered Species

5.8.1 - Kirtland's warbler (1) (10/12)

This sale is adjacent to a young jack pine stand which may be used by the endangered Kirtland's Warbler. The Department reserves the right to temporarily restrict all harvesting operations in a buffer zone of up to 500 feet if it is determined that Warbler territory has been established in the adjacent stand. The restricted period, if put into effect, would apply from May 1st to August 15th.

6 - Safety and Fire Prevention

6.2 - Signing

6.2.3 - Recreational trail posting (2/10)

The Purchaser is responsible for posting and maintaining caution signs on Waterfowl Rd which is also the horse trail prior to beginning operations. The trail must be posted at appropriate distances from the sale area to warn of logging activity and truck traffic at both ends of the trail. Signs must be removed when harvest operations are suspended or completed. The Purchaser will provide these signs.

7 - Other Conditions

7.2 - Extensions

7.2.2 - No extensions (3/09)

There will be no extensions granted on this contract. The purpose of this sale is to create habitat for the endangered Kirtland's warbler and these stands are already scheduled for planting.



TIMBER SALE MAP

This information provided by authority of Part 525, 1994 PA 451, as amended.

Forest Management Unit Traverse City	County Kalkaska	Mapped By Armstrong	Date 1/17/2017	Page 1	of 1
Township 27N	Range 5W	Cruised By Armstrong & Crigier	Scale 1:15,840		
Section(s) and Subdivision(s) Sections 12 & 13 - see prospectus					

Cover Type

A = Aspen	H = Hemlock	N = Marsh	U = Upland Brush
B = Paper Birch	J = Jack Pine	O = Oak	UM = Upland Mixed
C = Cedar	L = Lowland Brush	P = Lowland Poplar	V = Bog or Marsh
D = Treed Bog	LM = Lowland Mixed	Q = Mixed Swamp Conifer	W = White Pine
E = Swamp Hdwoods	M = Mpl, Bch, Brch	R = Red Pine	X = Non Stocked
F = Spruce Fir	MC = Mixed Conifer	S = Black Spruce	Z = Water
G = Grass	MD = Mixed Deciduous	T = Tamarack	

Density

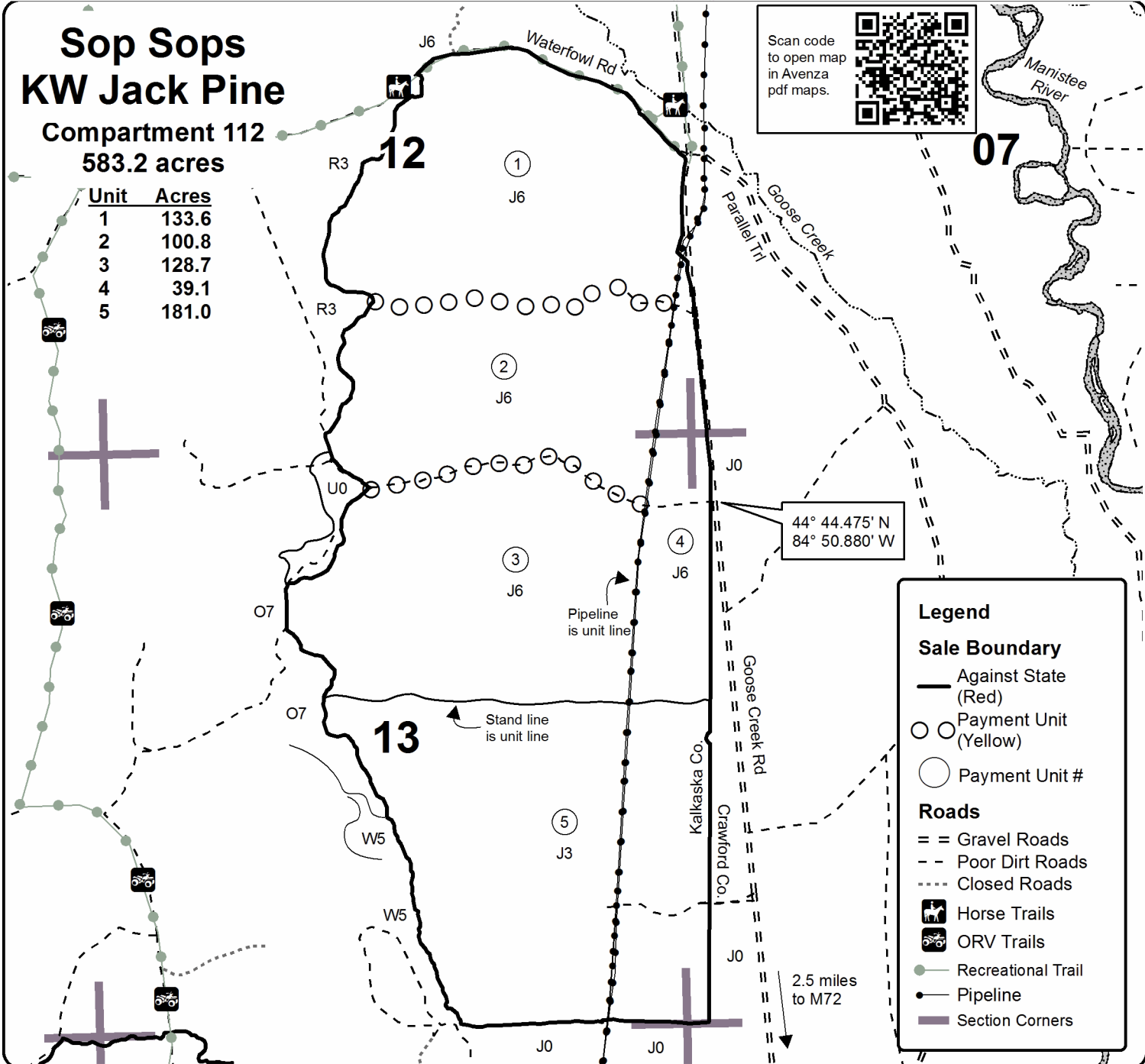
0 = Non Stocked	5 = Pole Timber Medium
1 = Seedling Sapling Poor	6 = Pole Timber Well
2 = Seedling Sapling Medium	7 = Saw Timber Poor
3 = Seedling Sapling Well	8 = Saw Timber Medium
4 = Pole Timber Poor	9 = Saw Timber Well



Sop Sops KW Jack Pine

Compartment 112
583.2 acres

Unit	Acres
1	133.6
2	100.8
3	128.7
4	39.1
5	181.0



Scan code to open map in Avenza pdf maps.

44° 44.475' N
84° 50.880' W

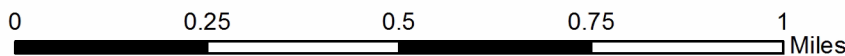
Legend

Sale Boundary

- Against State (Red)
- Payment Unit (Yellow)
- Payment Unit #

Roads

- == Gravel Roads
- - Poor Dirt Roads
- ... Closed Roads
- 🐎 Horse Trails
- 🛵 ORV Trails
- 🌳 Recreational Trail
- Pipeline
- Section Corners



TIMBER SALE INFORMATION

KING RED ADD-ON (61-113-16)
 T26N, R05W, SEC. 30.
 Kalkaska County (Advertised Price \$11,186.65)

A timber sale contract for this lump sum, sealed bid timber sale will be awarded to the responsible bidder offering the highest sealed bid price. Bids must be at or above the following advertised price for each species:

<u>PRODUCTS & SPECIES</u>	<u>ESTIMATED UNITS*</u>	<u>ADVERTISED PRICE</u>
Sawtimber		
Red Pine	15.00 MBF	\$ 97.00 / MBF
Pulpwood		
Red Pine	269.00 Cords	\$ 34.30 / Cord

In addition, the successful bidder agrees to purchase the following species at the indicated advertised price for a total value of \$504.95:

<u>PRODUCTS & SPECIES</u>	<u>ESTIMATED UNITS*</u>	<u>ADVERTISED PRICE</u>
Pulpwood		
Jack Pine	19.00 Cords	\$ 11.75 / Cord
Red Maple	18.00 Cords	\$ 15.65 / Cord

* The total volume is statistically estimated within plus (+) or minus (-) 19.56 percent. The estimated units are final and not subject to adjustment. Prospective bidders are urged to examine this timber and to make their own estimates of quantity and quality.

BOND AND PAYMENT SCHEDULE:

1. A bond in the amount of \$600.00 to insure faithful performance of the conditions of the contract will be deposited by the successful bidder within 21 days of the sale award.
2. Cutting in any sale or unit without the required advance payment would be considered a trespass.
3. Total payment must be paid in advance or according to the following schedule:
 - (a) Ten percent (10%) of the sale value must be paid within 21 days of the sale award.
 - (b) The 10% down payment will be credited towards the first unit cut.
4. If no cutting takes place, the 10% down payment will not be refunded.
5. Operations on the contract issued will terminate on 06/30/2019.

Sale Specific Conditions & Requirements

Sale Name: KING RED ADD-ON

Sale Number: 61-113-16 Seq#: 1

1 - Sale Area

1.2 - Boundaries

1.2.1 - Painted boundaries (1/14)

The sale boundary is marked and identified by blue and red paint. Exterior sale boundary lines against private property are marked with blue paint. Exterior sale boundary lines against state are marked with red paint. The painted boundary line trees are not Included Timber and are to be protected.

2 - Timber Specifications

2.1 - Included Timber

2.1.8 - Designated plantation row unit(s) (12/08)

Within Payment Unit(s) 1 and 2, all red pine trees which meet minimum piece specifications in 2.2 Utilization, within designated plantation rows are designated for cutting. Designated plantation rows begin with the third row in from the outside of the plantation, then continue every third row. Because of the variability of row direction, it shall be the responsibility of the producer to maintain the third row sequence. Also cut all jack pine and red maple pockets.

4 - Transportation

4.1 - Construction

4.1.6 - Road construction (1/09)

Construction of new roads or improvements of existing roads shall be done in such a way as to minimize the environmental and visual impacts. Merchantable trees shall be cut and utilized unless otherwise directed. Non-merchantable trees shall be severed and laid flat on the ground. Slash shall be scattered, and not left in windrows and kept a minimum of 10 feet back from the road edge. Stumps shall be set upright, not left on edge, and be moved at least 10 feet away from the road edge. Disturbed soil shall be feathered into the woods and not left in berms or windrows.

4.1.7 - Road closure (10/11)

All new roads built into the sale must be blocked to vehicle traffic upon completion of the sale. In general, this will require constructing a four (4') foot high berm of stumps and logs covered with earth. Stumps and brush must be placed along the remainder of the trail. These roads must be rendered impassable to cars and trucks. All stumps from road building and landing construction must be reserved to block any newly constructed roads upon completion of the sale. These stumps must be scattered along the road system to prohibit vehicular movement. Contact the sale administrator for specific details of design and placement.

4.2 - Maintenance

4.2.1 - Hauling restriction (12/08)

Hauling may be restricted on King Road by the Road Commission. The restriction may occur during spring breakup or during wet weather conditions.

5 - Operations

5.1 - Notification

5.1.1 - Pre-sale conference (10/11)

A pre-sale conference on site between the Purchaser and sale administrator is required prior to beginning any operations to determine landing locations. The Unit Manager or his/her representative must be contacted at least 3 days in advance to schedule the conference.

5.2 - Conduct of Operations

5.2.1 - Slash

5.2.1.1 - Slash within sale area (2/04)

No trees are to be felled outside the sale area and all slash is to be kept at least 10 feet back from the blue paint line.

5.2.3 - Operating Restrictions

5.2.3.6 - Bark beetle restriction (12/08)

In the event drought creates a high risk of pine bark beetle infestation, pine is not to be cut during the period March 1 through July 1, unless all portions of trees greater than two inches in diameter are removed from the sale area, reduced to chips, or treated to the satisfaction of the Unit Manager or his/her representative, within fifteen days of being severed from the stump. Pine log decks, pulpwood piles and treetops that are piled for chipping in the fall or winter within a 1/4 mile of susceptible sites must be removed before March 15. Residual slash must not be placed in piles or rows and must be spread over the site for quick drying. The Department of Natural Resources will exercise this specification if the risk of damage warrants.

6 - Safety and Fire Prevention

6.2 - Signing

6.2.1 - Road posting (9/09)

The Purchaser is responsible for posting and maintaining caution signs on King Road prior to beginning operations. The road must be posted at appropriate distances from the sale area to warn of logging activity and truck traffic. Signs must be removed when harvest operations are suspended or completed. The Purchaser will provide these signs.



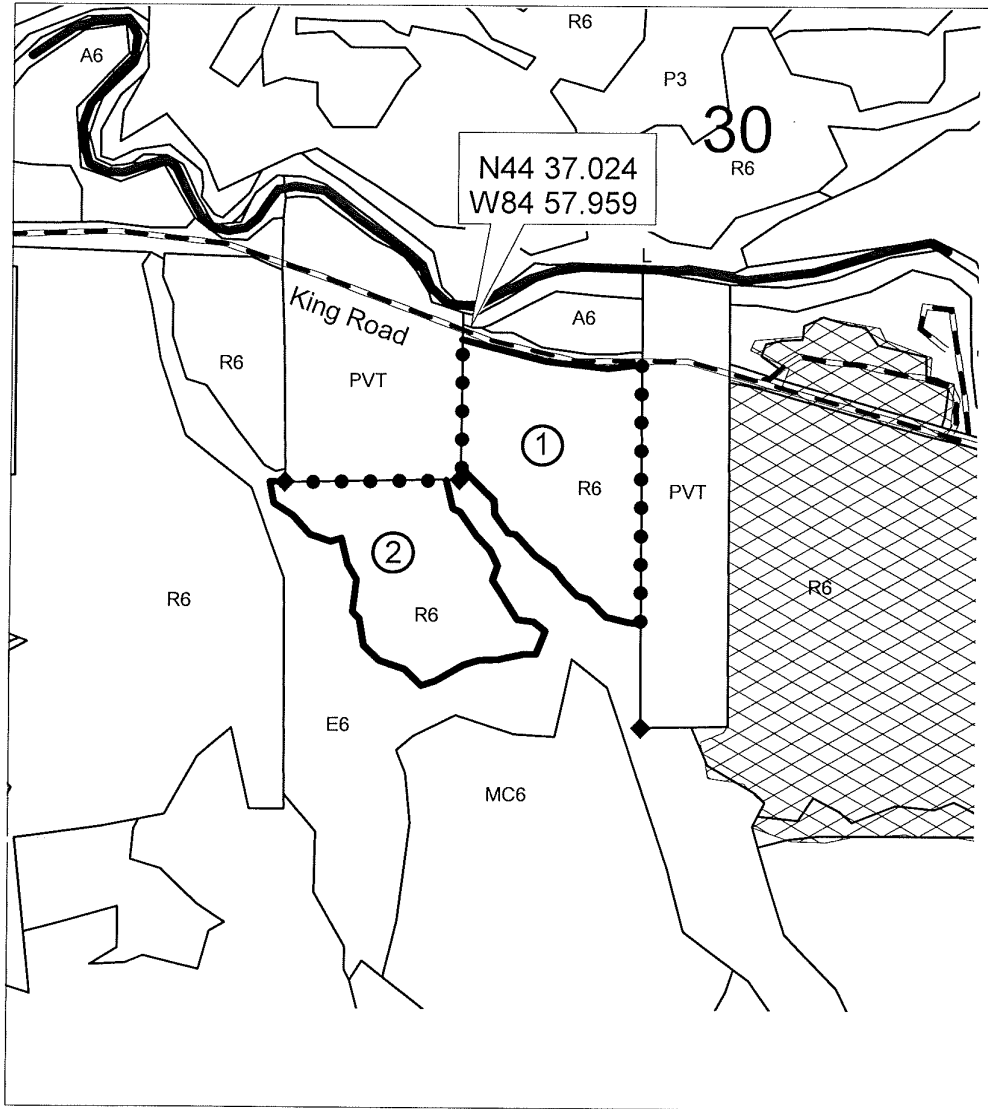
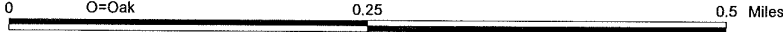
Michigan Department of Natural Resources-Forest Resources Division
TIMBER SALE MAP

This information provided under authority of Part 525, Act 451 of 1994, as amended.

Sale No.	Year	Sale Type
61-113	16	01

State Forest and Forest Management Unit: Pere Marquette/Traverse City MU		Mapped & Cruised By: Donna Hagan		Date: 12/08/15
Township 26 N	Range 05 W	Section(s) 30	Subdivision S1/2SW, NESW	Scale: 1:7920

Cover Type				Density		
A=Aspen	H=Hemlock	P=Lowland Poplar	V=Bog or Marsh	1=Non Stocked	7=Saw Timber Poor	
B=Paper Birch	J=Jack Pine	Q=Mixed Swamp Cnfr	W=White Pine	2=Seedling Sapling Poor	8=Saw Timber Medium	
C=Cedar	L=Lowland Brush	R=Red Pine	X=Non Stocked	3=Seedling Sapling Well	9=Saw Timber Well	
E=Swamp Hdwoods	M=Mpl, Bch, Brch	S=Black Spruce	Z=Water	4=Pole Timber Poor		
F=Spruce Fir	MC=Mixed Conifer	T=Tamarack		5=Pole Timber Medium		
G=Grass	N=Marsh	U=Upland Brush		6=Pole Timber Well		
	O=Oak					



Legend

- Sale Boundary Against State (Red)
- Private Line (Blue)
- PU Label
- Adj Sold Sale
- Adj Stand Boundaries
- Section Corners
- Roads
- Manisteer Rver
- Survey Corner

<h2 style="margin: 0;">King Red Add-On</h2> <h3 style="margin: 0;">20 Acres</h3>	PU#	ACRES
	1	11.0
	2	9.0

KING RED ADD-ON (61-113-16)
T26N, R05W, SEC. 30; Kalkaska COUNTY

In response to the notice of sale to be held 4:00 p.m. (local time) on May 1, 2017, I am hereby submitting my sealed bid (firm offer) for the following forest products to be cut. Bids for individual species must be at or above the advertised price. All non-responsive bid forms may be rejected.

<u>PRODUCTS & SPECIES</u>	<u>ESTIMATED VOLUME*</u>	<u>ADVERTISED PRICE</u>	<u>BID PRICE</u>
Sawtimber			
Red Pine	15.00 MBF	\$ 97.00/MBF	\$ _____
Pulpwood			
Red Pine	269.00 Cords	\$ 34.30/Cord	\$ _____

In addition, the successful bidder agrees to purchase the following species at the indicated advertised price for a total value of \$504.95 :

<u>PRODUCTS & SPECIES</u>	<u>ESTIMATED VOLUME*</u>	<u>ADVERTISED PRICE</u>
Pulpwood		
Jack Pine	19.00 Cords	\$ 11.75/Cord
Red Maple	18.00 Cords	\$ 15.65/Cord

*The volumes are statistically estimated within plus (+) or minus (-) 19.56 percent. These estimated volumes are final and not subject to adjustment. Prospective bidders are urged to examine this timber and to make their own estimates of quantity and quality.

I understand that any or all bids may be rejected. All bids must be signed and all bid items must be bid or the bid form may be rejected. I also understand that consideration and awarding a contract will be based upon my past performance and ability to complete the contract based upon equipment and staffing subject to my control.

FEDERAL ID: ____ - ____ - ____ or SOCIAL SECURITY NUMBER: ____ - ____ - ____

Company or individual bidding: _____

Company representative's name: _____

Address: _____

City: _____ State: _____ Zip: _____

IF AVAILABLE, PLEASE PLACE THE PERSONALIZED LABEL FROM YOUR PROSPECTUS IN THE ABOVE BOX.

Individual or company representative's signature: _____ Date: _____

Phone number : _____ Email (optional): _____

THE WINNING BIDDER MUST COMPLETE THE VERIFICATION OF WORKER'S DISABILITY COMPENSATION ACT COMPLIANCE (ON REVERSE SIDE IF DOUBLE SIDED) WITHIN 21 DAYS OF SALE AWARD DATE

Lake Effect Hardwoods (61-104-17)
 ; Kalkaska COUNTY

In response to the notice of sale to be held 4:00 p.m. (local time) on May 1, 2017, I am hereby submitting my sealed bid (firm offer) for the following forest products to be cut. Bids for individual species must be at or above the advertised price. All non-responsive bid forms may be rejected.

<u>PRODUCTS & SPECIES</u>	<u>ESTIMATED VOLUME*</u>	<u>ADVERTISED PRICE</u>	<u>BID PRICE</u>
Sawtimber			
Basswood	396.10 MBF	\$ 97.00/MBF	\$ _____
Beech	110.50 MBF	\$ 96.00/MBF	\$ _____
Black Cherry	1.70 MBF	\$ 196.00/MBF	\$ _____
Mixed Aspen	132.60 MBF	\$ 106.00/MBF	\$ _____
Paper Birch	0.50 MBF	\$ 33.00/MBF	\$ _____
Red Maple	144.90 MBF	\$ 133.00/MBF	\$ _____
Red Pine	31.20 MBF	\$ 104.00/MBF	\$ _____
Sugar Maple	120.70 MBF	\$ 296.00/MBF	\$ _____
Pulpwood			
Basswood	984.00 Cords	\$ 13.25/Cord	\$ _____
Beech	663.00 Cords	\$ 17.25/Cord	\$ _____
Mixed Aspen	594.00 Cords	\$ 21.25/Cord	\$ _____
Mixed Hardwood	2,045.00 Cords	\$ 17.25/Cord	\$ _____
Red Pine	99.00 Cords	\$ 35.80/Cord	\$ _____

*The volumes are statistically estimated within plus (+) or minus (-) 8.85 percent. These estimated volumes are final and not subject to adjustment. Prospective bidders are urged to examine this timber and to make their own estimates of quantity and quality.

I understand that any or all bids may be rejected. All bids must be signed and all bid items must be bid or the bid form may be rejected. I also understand that consideration and awarding a contract will be based upon my past performance and ability to complete the contract based upon equipment and staffing subject to my control.

FEDERAL ID: _____ or SOCIAL SECURITY NUMBER: _____
 Company or individual bidding: _____
 Company representative's name: _____
 Address: _____
 City: _____ State: _____ Zip: _____

IF AVAILABLE, PLEASE PLACE THE PERSONALIZED LABEL FROM YOUR PROSPECTUS IN THE ABOVE BOX.

Individual or company representative's signature: _____ Date: _____

Phone number : _____ Email (optional): _____

THE WINNING BIDDER MUST COMPLETE THE VERIFICATION OF WORKER'S DISABILITY COMPENSATION ACT COMPLIANCE (ON REVERSE SIDE IF DOUBLE SIDED) WITHIN 21 DAYS OF SALE AWARD DATE



FOR DEPARTMENT USE ONLY
Sale Number (XX - XXX - XX - XX)
Forest Management Unit:

TIMBER SALE VERIFICATION OF WORKER'S DISABILITY COMPENSATION ACT COMPLIANCE

*As required by Act 317, P.A. 1969 (Worker's Compensation) and
Part 5 of Act 451 of 1994, as amended.*

VERIFICATION OF WORKER'S DISABILITY COMPENSATION ACT COMPLIANCE

- This verification must be completed and submitted within 21 days of contract award and prior to the issuance of the timber sale contract.
- In addition, if boxes 2B or 2C are checked, then Notice of Exclusion or Certificate of Insurance must be submitted within twenty-one (21) days of the contract award and prior to the issuance of the timber sale contract.
- All information must be typed or printed except for written signatures.

Please Check Appropriate Categories:

1. My business is organized as (you **must** check one of the boxes below):
 - A. Sole Proprietorship (individual)
 - B. Partnership
 - C. Corporation

2. You **must** check one of the boxes below:
 - A. I certify my business is a sole proprietorship and it has no employees but the sole proprietor. I am not subject to the Worker's Compensation Laws.
 - B. I certify my business has satisfied its obligation to the Worker's Compensation Act through the use of an approved Notice of Exclusion (BWC-337, Rev. 5/96). I will provide a copy of the Notice of Exclusion within 21 days of the contract award. (For questions or a copy of the BWC-337, please call the Worker's Compensation Bureau at 517-322-1195).
 - C. I certify my business has a Worker's Compensation Policy. I will provide an original Certificate of Insurance within twenty-one (21) days of the contract award.

3. If you have checked item 2(A) or 2(B), you **must** indicate the number of **both** full-time and part-time employees, other than yourself, including family members and active partners (if none, you must enter "0").

_____ Full-time Employees

_____ Part-time Employees

Name of Business		Federal ID (or) Social Security No.	
Address		Telephone ()	
City	State	ZIP	

I hereby certify that the above information is true and correct. I agree to notify the Michigan DNR of any changes that occur in factors affecting my coverage during any of my present and future operations.

Signature of Owner or Authorized Representative

Title

Date

Please complete the "SEALED BID" information on the next page

Salvage Strips (61-107-17)
 ; Kalkaska COUNTY

In response to the notice of sale to be held 4:00 p.m. (local time) on May 1, 2017, I am hereby submitting my sealed bid (firm offer) for the following forest products to be cut. Bids for individual species must be at or above the advertised price. All non-responsive bid forms may be rejected.

<u>PRODUCTS & SPECIES</u>	<u>ESTIMATED VOLUME*</u>	<u>ADVERTISED PRICE</u>	<u>BID PRICE</u>
Sawtimber			
Red Maple	1.20 MBF	\$ 143.00/MBF	\$ _____
Red Oak	75.40 MBF	\$ 232.00/MBF	\$ _____
White Oak	17.20 MBF	\$ 60.00/MBF	\$ _____
Pulpwood			
Misc. Species 1	37.00 Cords	\$ 3.75/Cord	\$ _____
Red Maple	7.00 Cords	\$ 18.50/Cord	\$ _____
Red Oak	190.00 Cords	\$ 14.00/Cord	\$ _____
White Oak	133.00 Cords	\$ 14.00/Cord	\$ _____

*The volumes are statistically estimated within plus (+) or minus (-) 26.84 percent. These estimated volumes are final and not subject to adjustment. Prospective bidders are urged to examine this timber and to make their own estimates of quantity and quality.

I understand that any or all bids may be rejected. All bids must be signed and all bid items must be bid or the bid form may be rejected. I also understand that consideration and awarding a contract will be based upon my past performance and ability to complete the contract based upon equipment and staffing subject to my control.

FEDERAL ID: _____ or SOCIAL SECURITY NUMBER: _____
 Company or individual bidding: _____
 Company representative's name: _____
 Address: _____
 City: _____ State: _____ Zip: _____

IF AVAILABLE, PLEASE PLACE THE PERSONALIZED LABEL FROM YOUR PROSPECTUS IN THE ABOVE BOX.

Individual or company representative's signature: _____ Date: _____

Phone number : _____ Email (optional): _____

THE WINNING BIDDER MUST COMPLETE THE VERIFICATION OF WORKER'S DISABILITY COMPENSATION ACT COMPLIANCE (ON REVERSE SIDE IF DOUBLE SIDED) WITHIN 21 DAYS OF SALE AWARD DATE



FOR DEPARTMENT USE ONLY	
Sale Number (XX - XXX - XX - XX)	
Forest Management Unit:	

TIMBER SALE VERIFICATION OF WORKER'S DISABILITY COMPENSATION ACT COMPLIANCE

As required by Act 317, P.A. 1969 (Worker's Compensation) and
Part 5 of Act 451 of 1994, as amended.

VERIFICATION OF WORKER'S DISABILITY COMPENSATION ACT COMPLIANCE

- This verification must be completed and submitted within 21 days of contract award and prior to the issuance of the timber sale contract.
- In addition, if boxes 2B or 2C are checked, then Notice of Exclusion or Certificate of Insurance must be submitted within twenty-one (21) days of the contract award and prior to the issuance of the timber sale contract.
- All information must be typed or printed except for written signatures.

Please Check Appropriate Categories:

1. My business is organized as (you **must** check one of the boxes below):
 - A. Sole Proprietorship (individual)
 - B. Partnership
 - C. Corporation
2. You **must** check one of the boxes below:
 - A. I certify my business is a sole proprietorship and it has no employees but the sole proprietor. I am not subject to the Worker's Compensation Laws.
 - B. I certify my business has satisfied its obligation to the Worker's Compensation Act through the use of an approved Notice of Exclusion (BWC-337, Rev. 5/96). I will provide a copy of the Notice of Exclusion within 21 days of the contract award. (For questions or a copy of the BWC-337, please call the Worker's Compensation Bureau at 517-322-1195).
 - C. I certify my business has a Worker's Compensation Policy. I will provide an original Certificate of Insurance within twenty-one (21) days of the contract award.
3. If you have checked item 2(A) or 2(B), you **must** indicate the number of **both** full-time and part-time employees, other than yourself, including family members and active partners (if none, you must enter "0").

_____ Full-time Employees

_____ Part-time Employees

Name of Business		Federal ID (or) Social Security No.	
Address		Telephone ()	
City	State	ZIP	

I hereby certify that the above information is true and correct. I agree to notify the Michigan DNR of any changes that occur in factors affecting my coverage during any of my present and future operations.

Signature of Owner or Authorized Representative

Title

Date

Please complete the "SEALED BID" information on the next page

Sop Sops KW Jack Pine (61-115-17)
 ; Crawford COUNTY

In response to the notice of sale to be held 4:00 p.m. (local time) on May 1, 2017, I am hereby submitting my sealed bid (firm offer) for the following forest products to be cut. Bids for individual species must be at or above the advertised price. All non-responsive bid forms may be rejected.

<u>PRODUCTS & SPECIES</u>	<u>ESTIMATED VOLUME*</u>	<u>ADVERTISED PRICE</u>	<u>BID PRICE</u>
Sawtimber			
Red Oak	12.80 MBF	\$ 232.00/MBF	\$ _____
Red Pine	144.90 MBF	\$ 112.00/MBF	\$ _____
Pulpwood			
Black Cherry	34.00 Cords	\$ 18.50/Cord	\$ _____
Jack Pine	5,473.00 Cords	\$ 10.70/Cord	\$ _____
Jack Pine	181.00 Acres	\$ 23.00/Acres	\$ _____
Misc. Species 2	22.00 Cords	\$ 3.75/Cord	\$ _____
Quaking Aspen	36.00 Cords	\$ 22.75/Cord	\$ _____
Red Maple	30.00 Cords	\$ 18.50/Cord	\$ _____
Red Oak	22.00 Cords	\$ 14.00/Cord	\$ _____
Red Pine	161.00 Cords	\$ 38.40/Cord	\$ _____
White Pine	38.00 Cords	\$ 15.50/Cord	\$ _____

*The volumes are statistically estimated within plus (+) or minus (-) 11.56 percent. These estimated volumes are final and not subject to adjustment. Prospective bidders are urged to examine this timber and to make their own estimates of quantity and quality.

I understand that any or all bids may be rejected. All bids must be signed and all bid items must be bid or the bid form may be rejected. I also understand that consideration and awarding a contract will be based upon my past performance and ability to complete the contract based upon equipment and staffing subject to my control.

FEDERAL ID: _____ or SOCIAL SECURITY NUMBER: _____

Company or individual bidding: _____

Company representative's name: _____

Address: _____

City: _____ State: _____ Zip: _____

IF AVAILABLE, PLEASE PLACE THE PERSONALIZED LABEL FROM YOUR PROSPECTUS IN THE ABOVE BOX.

Individual or company representative's signature: _____ Date: _____

Phone number : _____ Email (optional): _____

THE WINNING BIDDER MUST COMPLETE THE VERIFICATION OF WORKER'S DISABILITY COMPENSATION ACT COMPLIANCE (ON REVERSE SIDE IF DOUBLE SIDED) WITHIN 21 DAYS OF SALE AWARD DATE



FOR DEPARTMENT USE ONLY
Sale Number (XX - XXX - XX - XX)
Forest Management Unit:

TIMBER SALE VERIFICATION OF WORKER'S DISABILITY COMPENSATION ACT COMPLIANCE

*As required by Act 317, P.A. 1969 (Worker's Compensation) and
Part 5 of Act 451 of 1994, as amended.*

VERIFICATION OF WORKER'S DISABILITY COMPENSATION ACT COMPLIANCE

- This verification must be completed and submitted within 21 days of contract award and prior to the issuance of the timber sale contract.
- In addition, if boxes 2B or 2C are checked, then Notice of Exclusion or Certificate of Insurance must be submitted within twenty-one (21) days of the contract award and prior to the issuance of the timber sale contract.
- All information must be typed or printed except for written signatures.

Please Check Appropriate Categories:

1. My business is organized as (you **must** check one of the boxes below):
 - A. Sole Proprietorship (individual)
 - B. Partnership
 - C. Corporation
2. You **must** check one of the boxes below:
 - A. I certify my business is a sole proprietorship and it has no employees but the sole proprietor. I am not subject to the Worker's Compensation Laws.
 - B. I certify my business has satisfied its obligation to the Worker's Compensation Act through the use of an approved Notice of Exclusion (BWC-337, Rev. 5/96). I will provide a copy of the Notice of Exclusion within 21 days of the contract award. (For questions or a copy of the BWC-337, please call the Worker's Compensation Bureau at 517-322-1195).
 - C. I certify my business has a Worker's Compensation Policy. I will provide an original Certificate of Insurance within twenty-one (21) days of the contract award.
3. If you have checked item 2(A) or 2(B), you **must** indicate the number of **both** full-time and part-time employees, other than yourself, including family members and active partners (if none, you must enter "0").

_____ Full-time Employees

_____ Part-time Employees

Name of Business		Federal ID (or) Social Security No.	
Address		Telephone ()	
City	State	ZIP	

I hereby certify that the above information is true and correct. I agree to notify the Michigan DNR of any changes that occur in factors affecting my coverage during any of my present and future operations.

Signature of Owner or Authorized Representative

Title

Date

Please complete the "SEALED BID" information on the next page

MWR Comp 110 Hardwoods (61-108-17)
; Kalkaska COUNTY

In response to the notice of sale to be held 4:00 p.m. (local time) on May 1, 2017, I am hereby submitting my sealed bid (firm offer) for the following forest products to be cut. Bids for individual species must be at or above the advertised price. All non-responsive bid forms may be rejected.

<u>PRODUCTS & SPECIES</u>	<u>ESTIMATED VOLUME*</u>	<u>ADVERTISED PRICE</u>	<u>BID PRICE</u>
Sawtimber			
Beech	41.90 MBF	\$ 75.00/MBF	\$ _____
Red Maple	16.10 MBF	\$ 105.00/MBF	\$ _____
Red Oak	2.10 MBF	\$ 170.00/MBF	\$ _____
Sugar Maple	116.40 MBF	\$ 233.00/MBF	\$ _____
Pulpwood			
Mixed Hardwood	381.00 Cords	\$ 13.55/Cord	\$ _____

*The volumes are statistically estimated within plus (+) or minus (-) 17.69 percent. These estimated volumes are final and not subject to adjustment. Prospective bidders are urged to examine this timber and to make their own estimates of quantity and quality.

I understand that any or all bids may be rejected. All bids must be signed and all bid items must be bid or the bid form may be rejected. I also understand that consideration and awarding a contract will be based upon my past performance and ability to complete the contract based upon equipment and staffing subject to my control.

FEDERAL ID: ____ - ____ - ____ or SOCIAL SECURITY NUMBER: ____ - ____ - ____

Company or individual bidding: _____

Company representative's name: _____

Address: _____

City: _____ State: _____ Zip: _____

IF AVAILABLE, PLEASE PLACE THE PERSONALIZED LABEL FROM YOUR PROSPECTUS IN THE ABOVE BOX.

Individual or company representative's signature: _____ Date: _____

Phone number : _____ Email (optional): _____

THE WINNING BIDDER MUST COMPLETE THE VERIFICATION OF WORKER'S DISABILITY COMPENSATION ACT COMPLIANCE (ON REVERSE SIDE IF DOUBLE SIDED) WITHIN 21 DAYS OF SALE AWARD DATE



FOR DEPARTMENT USE ONLY
Sale Number (XX - XXX - XX - XX)
Forest Management Unit:

TIMBER SALE VERIFICATION OF WORKER'S DISABILITY COMPENSATION ACT COMPLIANCE

*As required by Act 317, P.A. 1969 (Worker's Compensation) and
Part 5 of Act 451 of 1994, as amended.*

VERIFICATION OF WORKER'S DISABILITY COMPENSATION ACT COMPLIANCE

- This verification must be completed and submitted within 21 days of contract award and prior to the issuance of the timber sale contract.
- In addition, if boxes 2B or 2C are checked, then Notice of Exclusion or Certificate of Insurance must be submitted within twenty-one (21) days of the contract award and prior to the issuance of the timber sale contract.
- All information must be typed or printed except for written signatures.

Please Check Appropriate Categories:

1. My business is organized as (you **must** check one of the boxes below):
 - A. Sole Proprietorship (individual)
 - B. Partnership
 - C. Corporation
2. You **must** check one of the boxes below:
 - A. I certify my business is a sole proprietorship and it has no employees but the sole proprietor. I am not subject to the Worker's Compensation Laws.
 - B. I certify my business has satisfied its obligation to the Worker's Compensation Act through the use of an approved Notice of Exclusion (BWC-337, Rev. 5/96). I will provide a copy of the Notice of Exclusion within 21 days of the contract award. (For questions or a copy of the BWC-337, please call the Worker's Compensation Bureau at 517-322-1195).
 - C. I certify my business has a Worker's Compensation Policy. I will provide an original Certificate of Insurance within twenty-one (21) days of the contract award.
3. If you have checked item 2(A) or 2(B), you **must** indicate the number of **both** full-time and part-time employees, other than yourself, including family members and active partners (if none, you must enter "0").

_____ Full-time Employees

_____ Part-time Employees

Name of Business		Federal ID (or) Social Security No.	
Address		Telephone ()	
City	State	ZIP	

I hereby certify that the above information is true and correct. I agree to notify the Michigan DNR of any changes that occur in factors affecting my coverage during any of my present and future operations.

Signature of Owner or Authorized Representative

Title

Date

Please complete the "SEALED BID" information on the next page