



**DEPARTMENT OF NATURAL RESOURCES  
STATE OF MICHIGAN**

**TIMBER SALE PROSPECTUS #5789**

SCHEDULED SALE DATE AND TIME: 11:00 a.m. (local time) on April 19, 2017.

LOCATION: ROSCOMMON MGMT UNIT, PO BOX 218, ROSCOMMON, MI 48653.

PROSPECTUS NOTE: The bidder is advised to inspect the sale area and review the location, estimated volumes, operating costs and contract terms of proposed sales. Please be aware that some landowners may request 60 days or more notice for access across their land.

Notice is hereby given that bids will be received by the Unit Manager, ROSCOMMON MANAGEMENT UNIT, for certain timber on the following described lands:

Hot Tub Oak (71-015-16)

Ogemaw County, Advertised Price \$23,259.15, 40.0 Acres, Hardwood, Red Oak.

Backyard Aspen (71-017-16)

Roscommon County, Advertised Price \$26,494.85, 34.4 Acres, Aspen, Hardwood.

SALE NOTE: Preferred access to the timber sale will be through private property. If the purchaser cannot arrange access through private property, road construction will be necessary to complete the timber sale. Refer to Location (A.) on the Timber Sale Map (Sale Spec 4.4.1). The purchaser may need to use crane mats in lowland areas of constructing the road, which the DNR can provide (Sale Spec 5.2.17).

A recreation site such as a trail, pathway, or campground is within the sale area or the vicinity. Certain restrictions/specifications may be applicable including time restrictions. Access may be through private or other public land.

Spruce Anyone (71-023-16)

Roscommon County, Advertised Price \$5,710.20, 16.7 Acres, Hardwood, Spruce/Fir/Tamarack.

SALE NOTE: This sale will be restricted to operations being during the winter months due to the soils within the unit being poorly drained and have the potential for rutting, and the access route into the sale area is through a wildlife food plot. To lessen the chance of damage to the food plot such as soil compaction, etc., frozen ground is required

Due to the sensitive soils the sale area encompasses, harvesting equipment operating within the sale shall be tracked to lessen the ground pressure footprint of that piece of equipment. Wheeled units with tracks will be allowed.

## BID INSTRUCTIONS (VER. 09/02/2016):

### 1. Scheduled Bid Location, Date, and Time (2/11)

Bids must be received by the Unit Manager, ROSCOMMON OFFICE, PO BOX 218, ROSCOMMON, MI 48653, no later than 11:00 a.m. (local time) on April 19, 2017. For further information concerning this sale, contact Steve Anderson at 989-275-4622 extension 2740.

### 2. Bidder's Qualifications (5/16)

Purchaser shall obtain workers compensation insurance to cover claims under Michigan's Worker's Disability Compensation Act of 1969 or similar employee benefit act of any other state applicable to an employee. If all or part of a timber sale was prepared by a private contractor, the contractor and that contractor's company are not permitted to bid on the timber sale contract. Bids will not be accepted from individuals or companies appearing on the DNR/FRD No-Bid List. This list contains the names of purchasers who previously failed to execute a contract within 21-days or who have a history of poor performance.

### 3. Preparation of Sealed Bids (5/16)

Bid Forms may be completed online thru Michigan DNR Timber Sale Online Bidding (OLB) at [www.michigan.gov/timberbidding](http://www.michigan.gov/timberbidding) or by completing the hardcopy Bid Form found in the Timber Sale Prospectus. Hardcopy Bid Forms shall be manually signed in ink. Registration in OLB is considered your 'signature' for all bids submitted thru that system. Bid prices must be entered for each species and product in the Bid Price column for all material subject to bidding and all fill-in blanks must be completed. If erasures or other changes appear on the hardcopy Bid Form, each erasure or change must be initialed by the person signing the bid.

### 4. Submission of Sealed Bids (5/16)

Bid forms may be obtained from the Unit Manager or thru OLB. Bids may be submitted hardcopy or thru OLB. All hardcopy bids must be submitted on the bid form and in an envelope clearly identified as described in this section. NOTE: Only one bid form per bid envelope. Sealed bids must be submitted to the Unit office designated in the prospectus and must be submitted at or prior to the time established in the prospectus. The envelope should show on the outside (a) the sale name or number and (b) the date and time of bid opening, as shown in the prospectus. Bids received after the time specified in the sale prospectus are late bids and will be rejected.

It is possible for a bidder to submit multiple bids on a single sale. For example, a bid may be submitted hardcopy and a bid may be submitted thru OLB. Or, two bidders from the same company could both submit bids on the same sale. If this were to happen, the State would accept all bids received and award the contract accordingly. All bidding and contractual requirements would apply to all bids received.

### 5. Public Opening of Sealed Bids (7/16)

If conditions permit, the sealed bids will be publicly opened and posted at the time and place set in the prospectus.

If a bidder, present at a bid opening, has submitted bids on more than one sale, that bidder may withdraw their unopened bid envelopes or announce the withdrawal of their online bid after being declared the successful bidder on one sale.

### 6. Award of Contract (1/11)

Award of the contract will be made to the Bidder whose bid, conforming to the prospectus, is most advantageous to the State of Michigan on the basis of total value at rates bid for the estimated quantities. The State reserves the right to reject any bid or waive any minor irregularity in bids received. A written award mailed (or otherwise furnished) to the successful Bidder shall be deemed to result in a binding contract without further action by either party.

### 7. Down Payment (1/11)

The Bidder to whom award is made must make a down payment within 21 days of the sale award. The amount of the down payment will be calculated as shown in the Bond and Payment Schedule of this prospectus. Only cash may be used to meet this requirement.

### 8. Performance Security (1/11)

As guarantee of faithful performance, a cash bond, certificate of deposit, surety bond or irrevocable letter of credit (LOC) is required within 21 days of the sale award. The amount of the performance security is shown in the Bond and

Payment Schedule of this prospectus. If an LOC or surety is used, the coverage must extend for at least 6 months beyond the contract expiration.

#### 9. Timber Sale Contract (9/14)

Additional conditions and requirements common to all timber sales are listed on the timber sale contract (R4031) and are available on line at [www.michigan.gov/timber](http://www.michigan.gov/timber). Contact the Unit Manager for additional information or a sample contract. Within 21 days of the date of the award letter, the bidder must sign the contract and provide the required down payment, performance security, and verification of worker's disability compensation. The down payment and performance security shall be in accordance with the provisions of the timber sale contract, in the sums stated in this prospectus. If these actions are not taken, then the Bidder, the Bidder's corporation, and the corporation's principals may not be permitted to bid on State timber sales for a period of 1 year. In addition, the Bidder certifies that if awarded this contract, the Bidder will complete the timber sale contract in accordance with its terms and any modifications thereof including requirements to purchase, cut, and remove the included timber by the expiration date.

#### 10. Disclaimer of Estimates and Bidder's Warranty of Inspection (7/16)

Before submitting this bid, the Bidder is advised and cautioned to inspect the sale area, review the requirements of the sale contract, and take other steps as may be reasonably necessary to ascertain the location, estimated volumes, construction estimates, and operating costs of the proposed sale. Failure to do so will not relieve the Bidder from responsibility for completing the contract.

The Bidder warrants that this bid is submitted solely on the basis of the Bidder's examination and inspection of the quality and quantity of the timber offered for sale and the Bidder's opinion of the value thereof and the costs of recovery. No reliance should be placed on the State of Michigan's estimates of timber quality, quantity or costs of recovery. Bidder further acknowledges that the State of Michigan: (i) expressly disclaims any warranty of fitness of timber for any purpose; (ii) offers this timber as is without any warranty of quality (merchantability) or quantity and (iii) expressly disclaims any warranty as to the quantity or quality of timber sold.

#### 11. Certification and Chain-of-Custody (10/14)

Unless otherwise indicated in the contract under section 7 – Other Conditions of the Sale Specific Conditions & Requirements, the area encompassed by this timber sale is certified to the standards of the Forest Stewardship Council (FSC) - Certificate #SCS-FM/COC-00090N and the Sustainable Forestry Initiative (SFI) - Certificate #NSF-SFIS-5Y031-SF5. Forest products from this sale may be delivered to the mill as "FSC 100% and / or SFI certified" as long as the contractor hauling the forest products is chain-of-custody (COC) certified or covered under a COC certificate from the destination mill. The purchaser is responsible for maintaining COC after leaving the sale area.

#### 12. Good Neighbor Authority (GNA) Requirements (7/16)

If the name of this timber sales contains the acronym GNA, it is authorized by the Good Neighbor Authority (GNA) and covered by various agreements between the U.S. Forest Service and the State. The timber sale occurs on federal land and the following conditions apply:

GNA contracts on US Forest Service land will not be awarded to purchasers on the Federal list of excluded parties. The System for Award Management (SAM) will be checked for active excluded parties prior to award of contract. In addition, the Bidder to whom award is made must complete an Assurance Regarding Felony Conviction or Tax Delinquent Status for Corporate Applicants (AD-3031).

#### 13. Good Neighbor Authority (GNA) Requirements, con't (9/16)

Bidder certifies, by signing this bid form, that to the best of Bidder's knowledge that the following representations are accurate and complete.

- a. That the Bidder and its principals are not presently debarred, suspended, proposed for debarment, declared ineligible, or voluntary excluded from timber sales (covered transactions) by any Federal department or agency.
- b. That the Bidder and its principals have not within a 3-year period preceding this bid been convicted of or had a civil judgment rendered against them for commission of fraud or a criminal offense in connection with obtaining, attempting to obtain, or performing a public (Federal, State, or local) transaction or contract under a public transaction; violation of Federal or State antitrust statutes or commission of embezzlement, theft, forgery, bribery, falsification or destruction of records, making false statements, or receiving stolen property.

c. That the Bidder and its principals are not presently indicted for or otherwise criminally or civilly charged by a governmental entity (Federal, State, or local) with commission of any of the offenses enumerated in paragraph b of this certification.

d. That the Bidder and its principals have not within a 3-year period preceding this bid had one or more public transactions (Federal, State, or local) terminated for breach or default of a timber or forest product contract.

Bidders that cannot certify this requirement, in whole or in part, shall submit an explanation with their bid.

KEITH CREAGH

Director

# TIMBER SALE INFORMATION

## Hot Tub Oak (71-015-16)

Ogemaw County (Advertised Price \$23,259.15)

A timber sale contract for this lump sum, sealed bid timber sale will be awarded to the responsible bidder offering the highest sealed bid price. Bids must be at or above the following advertised price for each species:

<u>PRODUCTS &amp; SPECIES</u>	<u>ESTIMATED UNITS*</u>	<u>ADVERTISED PRICE</u>
Sawtimber		
BI/R/Hybrid Oak	103.10 MBF	\$ 116.00 / MBF
Red Oak	25.40 MBF	\$ 189.00 / MBF
White Oak	4.60 MBF	\$ 63.00 / MBF
Pulpwood		
B. T. Aspen	11.00 Cords	\$ 37.70 / Cord
BI/R/Hybrid Oak	267.00 Cords	\$ 15.55 / Cord
Red Maple	30.00 Cords	\$ 19.90 / Cord
Red Oak	31.00 Cords	\$ 15.55 / Cord
Red Pine	3.00 Cords	\$ 49.00 / Cord
White Oak	21.00 Cords	\$ 15.55 / Cord
White Pine	4.00 Cords	\$ 22.50 / Cord

\* The total volume is statistically estimated within plus (+) or minus (-) 17.93 percent. The estimated units are final and not subject to adjustment. Prospective bidders are urged to examine this timber and to make their own estimates of quantity and quality.

### **BOND AND PAYMENT SCHEDULE:**

1. A bond in the amount of \$1,163.00 to insure faithful performance of the conditions of the contract will be deposited by the successful bidder within 21 days of the sale award.
2. Cutting in any sale or unit without the required advance payment would be considered a trespass.
3. Total payment must be paid in advance or according to the following schedule:
  - (a) Ten percent (10%) of the sale value must be paid within 21 days of the sale award.
  - (b) The 10% down payment will be credited towards the first unit cut.
4. If no cutting takes place, the 10% down payment will not be refunded.
5. Operations on the contract issued will terminate on 03/31/2019.

**Description of Timber by Payment Unit (PU)**

PU	MARKET GROUP	PRODUCT	QUANTITY	UNIT	ACRES	ADVERTISE PRICE
1	BI/R/Hybrid Oak	Sawtimber	40.9	MBF	17.2	\$8,973.60
	Red Oak		12.3	MBF		
	White Oak		0.6	MBF		
	BI/R/Hybrid Oak	Pulpwood	100.0	Cords		
	Red Oak		13.0	Cords		
	Red Pine		1.0	Cords		
	White Oak		1.0	Cords		
	White Pine		2.0	Cords		
	<i>White Pine</i>	<i>Sawtimber</i>	<i>0.3</i>	<i>MBF</i>		
	<i>White Pine</i>	<i>Pulpwood</i>	<i>1.0</i>	<i>Cords</i>		
2	BI/R/Hybrid Oak	Sawtimber	32.8	MBF	13.8	\$7,112.80
	Red Oak		9.8	MBF		
	White Oak		0.4	MBF		
	BI/R/Hybrid Oak	Pulpwood	81.0	Cords		
	Red Oak		11.0	Cords		
3	BI/R/Hybrid Oak	Sawtimber	29.4	MBF	9.0	\$7,172.75
	Red Oak		3.3	MBF		
	White Oak		3.6	MBF		
	B. T. Aspen	Pulpwood	11.0	Cords		
	BI/R/Hybrid Oak		86.0	Cords		
	Red Maple		30.0	Cords		
	<i>Red Maple</i>	<i>Sawtimber</i>	<i>1.6</i>	<i>MBF</i>		
	<i>Red Maple</i>	<i>Pulpwood</i>	<i>27.0</i>	<i>Cords</i>		
	Red Oak		7.0	Cords		
	Red Pine		2.0	Cords		
	White Oak		20.0	Cords		
	White Pine		2.0	Cords		
	<i>White Pine</i>		<i>2.0</i>	<i>Cords</i>		
TOTAL:			133.1	MBF		
TOTAL:			367.0	Cords		

# Sale Specific Conditions & Requirements

**Sale Name: Hot Tub Oak**

**Sale Number: 71-015-16 Seq#: 1**

## 1 - Sale Area

### 1.2 - Boundaries

#### 1.2.1 - Painted boundaries (1/14)

The sale boundary and Payment Unit boundaries are marked and identified by blue, red and yellow paint. Exterior sale boundary lines against private property are marked with blue paint. Exterior sale boundary lines against state are marked with red paint. Interior Payment Unit boundaries are marked with yellow paint. The painted boundary line trees are not Included Timber and are to be protected. Yellow painted trees designating an interior Payment Unit boundary are only to be cut when all surrounding Payment Units have been paid.

## 2 - Timber Specifications

### 2.1 - Included Timber

#### 2.1.3 - Cut tree marked unit(s) (12/08)

Within Payment Unit(s) #1 and #2, all trees are designated for cutting when marked with ORANGE paint above and below stump height, regardless of merchantability. In addition, cut all merchantable red maple and aspen.

#### 2.1.7 - Leave tree marked unit(s) (6/14)

Within Payment Unit(s) #3, all trees, which meet minimum piece specifications in 2.2 Utilization, are designated for cutting except trees marked with green paint above and below stump height.

### 2.2 - Utilization

#### 2.2.3 - Stump heights (4/07)

Stump heights within the Sale Area shall not exceed 12 inches for trees greater than 10 inches DBH and 4 inches for trees smaller than 10 inches DBH.

#### 2.2.6 - Roundwood operation required (5/07)

The skidding of whole trees or tree segments with limbs attached is prohibited within Payment Units #1, #2, and #3. All products must be produced as roundwood and forwarded to existing roads or landing areas in final product length.

## 3 - Payments

### 3.3 - Pre-measured Sales

#### 3.3.4 - Dividing payment units (7/14)

Payment Unit(s) may be divided at the request of the Purchaser and upon approval of the Unit Manager. Dividing Payment Units is a contract modification which requires a Timber Sale Contract Supplement.

### 3.4 - Damaged Timber

#### 3.4.1 - Damaged timber (6/14)

General Condition and Requirement 3.4 Damaged Timber, defines liquidated damages for undesignated live merchantable trees which are cut or injured. No damage is acceptable to merchantable trees. Within the sale area, if more than 5% of trees (> 4.5" DBH) within a specified area of the sale are damaged, liquidated damages will be assessed for all trees damaged. Rates will be in accordance with General Condition and Requirement 3.4 Damaged Timber.

## 4 - Transportation

### 4.1 - Construction

#### 4.1.3 - Slash and earthen piles (8/04)

Piles or windrows of earth along roads and landings that have been widened or constructed shall be leveled. Slash from road maintenance or construction, including stumps, shall be dispersed throughout the sale.

#### 4.1.6 - Road construction (1/09)

Construction of new roads or improvements of existing roads shall be done in such a way as to minimize the environmental and visual impacts. Merchantable trees shall be cut and utilized unless otherwise directed. Non-merchantable trees shall be severed and laid flat on the ground. Slash shall be scattered, and not left in windrows and kept a minimum of 10 feet back from the road edge. Stumps shall be set upright, not left on edge, and be moved at least 10 feet away from the road edge. Disturbed soil shall be feathered into the woods and not left in berms or windrows.

#### 4.1.7 - Road closure (10/11)

All new roads built into the sale must be blocked to vehicle traffic upon completion of the sale. All new roads built into the sale must be blocked to vehicle traffic within 30 days of completion of hauling. In general, this will require constructing a four (4') foot high berm of stumps and logs covered with earth. These roads must be rendered impassable to cars and trucks. All stumps from road building and landing construction must be reserved to block any newly constructed roads upon completion of the sale. These stumps must be scattered along the road system to prohibit vehicular movement. Contact the sale administrator for specific details of design and placement.

### 4.2 - Maintenance

#### 4.2.1 - Hauling restriction (12/08)

Hauling may be restricted on forest roads by the Unit Manager or his/her representative. The restriction may occur during wet weather conditions.

#### 4.2.3 - Road maintenance (8/13)

The following road maintenance is required: is required: Within 60 days of completion of hauling, or if no hauling occurs for 60 days, the road must be maintained and graded. This includes cleaning of drainage areas, grading, crowning and filling with gravel, if necessary. Damages will be assessed if grading/repair does not occur.

#### 4.2.5 - Two wheel drive condition (2/04)

All existing trail roads on and adjacent to the sale area must be passable by two-wheel drive traffic for the duration of the sale.

## 5 - Operations

### 5.2 - Conduct of Operations

#### 5.2.1 - Slash

##### 5.2.1.8 - Slash height (12/08)

No slash may exceed 24 inches in height.

#### 5.2.2 - Hazard Trees/Snags

##### 5.2.2.1 - Den trees (2/04)

Obvious hollow and/or den trees shall be protected and left standing unless they are a safety hazard.

#### 5.2.3 - Operating Restrictions

##### 5.2.3.4 - Oak wilt restriction (6/10)

Within Payment Unit(s) #1, #2, and #3, unless changed by written agreement, cutting, skidding, and hauling are not permitted during the period of April 15 to July 15. This is necessary to reduce the spread of oak wilt. For more information, contact the Unit Manager or his/her representative.

##### 5.2.3.11 - Coppice regeneration protection (4/10)

Timber harvesting in any Payment Unit must be completed before significant aspen sprouting occurs in that Payment Unit so as to minimize damage to the new regeneration. Any post harvest operations, such as chipping, must be completed before sprouting of regeneration occurs. If it is anticipated that chipping will be delayed, then tops shall be carried to one central location or left unchipped. The Unit Manager or his/her representative may cease such operations if sprouting occurs before the operation is complete.

#### 5.2.4 - Dead and Down Creation

##### 5.2.4.4 - Dead and down creation, grouse (8/13)

To encourage grouse and other wildlife, in Payment Unit(s) #1 and #2, leave one (1) slash pile for every two (2) acres. Slash piles should be at least 15' x 15' x 5'. Use red maple bunch piles when possible. Crisscross the slash when building



the pile.

#### 5.2.32 - Decking/landing restoration (9/13)

All decking and landing areas must have the surface area restored to a condition equal to or better than before. This is to ensure the proper regeneration of the stand. Wood debris, chips and "cookies" from trimmings must be removed or scattered away from landing and loading areas and may not be windrowed on the edge.

#### 5.2.38 - No decking against live trees (2/04)

Cut products may not be decked against unmarked or designated leave trees.

#### 5.2.39 - ORV trail/route protection (12/12)

The west side of Payment Unit #3 has the Ogemaw ORV Trail along the edge. Do not cut trees or damage posts with orange ORV markers. All stumps within 5 feet of the trail must be cut flush with the ground. Maintain a 20 foot wide slash, debris, and rut free zone daily using the ORV trail or route as the centerline.

### 5.4 - Soil Protection

#### 5.4.1 - Rutting restriction, general (7/16)

Operations are to cease immediately if equipment and weather conditions result in rutting of roads and/or skid trails which is 12 inches or greater in depth and 50 feet in length. The Unit Manager or his/her representative may restrict hauling and/or skidding if ruts exceed the specified depth. With the Unit Manager or his/her representative's approval, the Purchaser may return to the area when the risk of rutting has decreased.

## 6 - Safety and Fire Prevention

### 6.2 - Signing

#### 6.2.1 - Road posting (9/09)

The Purchaser is responsible for posting and maintaining caution signs on St. Helen Trail prior to beginning operations. The road must be posted at appropriate distances from the sale area to warn of logging activity and truck traffic. Signs must be removed when harvest operations are suspended or completed.

#### 6.2.3 - Recreational trail posting (2/10)

The Purchaser is responsible for posting and maintaining caution signs on Ogemaw ORV Trail prior to beginning operations. The trail must be posted at appropriate distances from the sale area to warn of logging activity and truck traffic at both ends of the trail. Signs must be removed when harvest operations are suspended or completed. The Purchaser will provide these signs.



Sale Number	Year
71 - 015	16

# TIMBER SALE MAP

This information provided by authority of Part 525, 1994 PA 451, as amended.

Forest Management Unit	County	Mapped By	Charlie VanKalker	Date	Page	of
Roscommon	Roscommon	Cruised By	Charlie VanKalker	09/06/2016	1	1
Township	Range	Section(s) and Subdivision(s)	Scale			
22N	01/02E	22N 01E, Sec. 1--NENW,NWNE 22N 02E, Sec. 6--NWNW	1:15,840			

Cover Type				Density	
A = Aspen	H = Hemlock	N = Marsh	U = Upland Brush	0 = Non Stocked	5 = Pole Timber Medium
B = Paper Birch	J = Jack Pine	O = Oak	UM = Upland Mixed	1 = Seedling Sapling Poor	6 = Pole Timber Well
C = Cedar	L = Lowland Brush	P = Lowland Poplar	V = Bog or Marsh	2 = Seedling Sapling Medium	7 = Saw Timber Poor
D = Tread Bog	LM = Lowland Mixed	Q = Mixed Swamp Conifer	W = White Pine	3 = Seedling Sapling Well	8 = Saw Timber Medium
E = Swamp Hdwoods	M = Mpl, Bch, Brch	R = Red Pine	X = Non Stocked	4 = Pole Timber Poor	9 = Saw Timber Well
F = Spruce Fir	MC = Mixed Conifer	S = Black Spruce	Z = Water		
G = Grass	MD = Mixed Deciduous	T = Tamarack			

PU	Acres
1	17.2
2	13.8
3	9.0

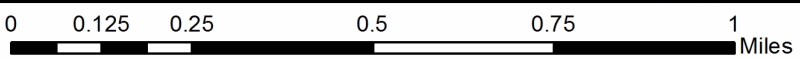
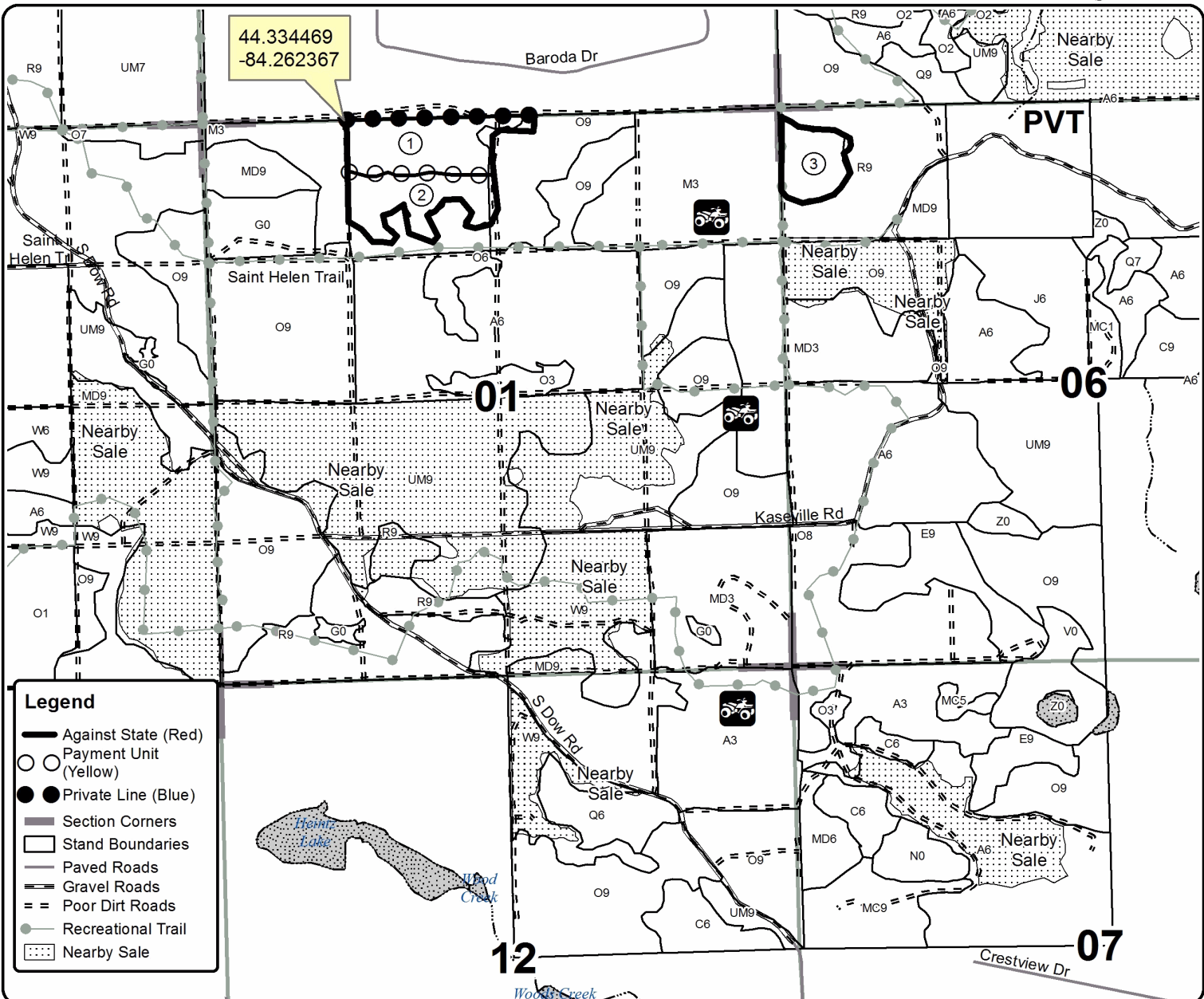
## Hot Tub Oak

### Compartment 190

### 40.0 Acres



44.334469  
-84.262367



# TIMBER SALE INFORMATION

## Backyard Aspen (71-017-16)

Roscommon County (Advertised Price \$26,494.85)

SALE NOTE: Preferred access to the timber sale will be through private property. If the purchaser cannot arrange access through private property, road construction will be necessary to complete the timber sale. Refer to Location (A.) on the Timber Sale Map (Sale Spec 4.4.1). The purchaser may need to use crane mats in lowland areas of constructing the road, which the DNR can provide (Sale Spec 5.2.17).

A recreation site such as a trail, pathway, or campground is within the sale area or the vicinity. Certain restrictions/specifications may be applicable including time restrictions. Access may be through private or other public land.

A timber sale contract for this lump sum, sealed bid timber sale will be awarded to the responsible bidder offering the highest sealed bid price. Bids must be at or above the following advertised price for each species:

<u>PRODUCTS &amp; SPECIES</u>	<u>ESTIMATED UNITS*</u>	<u>ADVERTISED PRICE</u>
Sawtimber		
B. T. Aspen	23.10 MBF	\$ 72.00 / MBF
Bl/R/Hybrid Oak	15.30 MBF	\$ 108.00 / MBF
Quaking Aspen	12.10 MBF	\$ 72.00 / MBF
Red Maple	10.60 MBF	\$ 46.00 / MBF
White Pine	4.30 MBF	\$ 97.00 / MBF
Pulpwood		
Bl/R/Hybrid Oak	61.00 Cords	\$ 14.55 / Cord
Jack Pine	13.00 Cords	\$ 14.85 / Cord
Mixed Aspen	477.00 Cords	\$ 35.20 / Cord
Paper Birch	16.00 Cords	\$ 16.05 / Cord
Red Maple	128.00 Cords	\$ 18.60 / Cord
Red Pine	9.00 Cords	\$ 45.75 / Cord
White Pine	23.00 Cords	\$ 21.00 / Cord

\* The total volume is statistically estimated within plus (+) or minus (-) 13.89 percent. The estimated units are final and not subject to adjustment. Prospective bidders are urged to examine this timber and to make their own estimates of quantity and quality.

### **BOND AND PAYMENT SCHEDULE:**

1. A bond in the amount of \$1,325.00 to insure faithful performance of the conditions of the contract will be deposited by the successful bidder within 21 days of the sale award.
2. Cutting in any sale or unit without the required advance payment would be considered a trespass.
3. Total payment must be paid in advance or according to the following schedule:
  - (a) Ten percent (10%) of the sale value must be paid within 21 days of the sale award.
  - (b) The 10% down payment will be credited towards the first unit cut.
4. If no cutting takes place, the 10% down payment will not be refunded.
5. Operations on the contract issued will terminate on 09/30/2019.

**Description of Timber by Payment Unit (PU)**

PU	MARKET GROUP	PRODUCT	QUANTITY	UNIT	ACRES	ADVERTISE PRICE	
1	B. T. Aspen	Sawtimber	23.1	MBF	16.5	\$20,038.25	
	BI/R/Hybrid Oak		2.1	MBF			
	Quaking Aspen		12.1	MBF			
	Red Maple		9.0	MBF			
	White Pine		4.3	MBF			
	BI/R/Hybrid Oak		Pulpwood	6.0			Cords
	Mixed Aspen			400.0			Cords
	<i>B. T. Aspen</i>			161.0			<i>Cords</i>
	<i>Quaking Aspen</i>			239.0			<i>Cords</i>
	Paper Birch			16.0			Cords
	Red Maple			81.0			Cords
	<i>Ironwood</i>			2.0			<i>Cords</i>
	<i>Red Maple</i>			79.0			<i>Cords</i>
	Red Pine			3.0			Cords
	White Pine			18.0			Cords
2	BI/R/Hybrid Oak	Sawtimber	13.2	MBF	17.9	\$6,456.60	
	Red Maple		1.6	MBF			
	BI/R/Hybrid Oak	Pulpwood	55.0	Cords			
	Jack Pine		13.0	Cords			
	Mixed Aspen		77.0	Cords			
	<i>Quaking Aspen</i>		77.0	<i>Cords</i>			
	Red Maple		47.0	Cords			
	<i>Red Maple</i>		47.0	<i>Cords</i>			
	Red Pine		6.0	Cords			
	White Pine		5.0	Cords			
TOTAL:			65.4	MBF			
TOTAL:			727.0	Cords			

## Sale Specific Conditions & Requirements

**Sale Name: Backyard Aspen**

**Sale Number: 71-017-16 Seq#: 1**

### 1 - Sale Area

#### 1.2 - Boundaries

##### 1.2.1 - Painted boundaries (1/14)

The sale boundaries are marked and identified by blue and red paint. Exterior sale boundary lines against private property are marked with blue paint. Exterior sale boundary lines against state are marked with red paint.

### 2 - Timber Specifications

#### 2.1 - Included Timber

##### 2.1.1 - Clearcut unit(s) with unmerchantable trees (6/14)

Within Payment Unit(s) #1 and #2, cut all trees that are two (2) inches or more at DBH except GREEN painted trees.

#### 2.2 - Utilization

##### 2.2.3 - Stump heights (4/07)

Stump heights within the Sale Area shall not exceed 12 inches for trees greater than 10 inches DBH and 4 inches for trees smaller than 10 inches DBH.

### 3 - Payments

#### 3.3 - Pre-measured Sales

##### 3.3.4 - Dividing payment units (7/14)

Payment Unit(s) may be divided at the request of the Purchaser and upon approval of the Unit Manager. Dividing Payment Units is a contract modification which requires a Timber Sale Contract Supplement.

### 4 - Transportation

#### 4.1 - Construction

##### 4.1.3 - Slash and earthen piles (8/04)

Piles or windrows of earth along roads and landings that have been widened or constructed shall be leveled. Slash from road maintenance or construction, including stumps, shall be dispersed throughout the sale.

##### 4.1.6 - Road construction (1/09)

Construction of new roads or improvements of existing roads shall be done in such a way as to minimize the environmental and visual impacts. Merchantable trees shall be cut and utilized unless otherwise directed. Non-merchantable trees shall be severed and laid flat on the ground. Slash shall be scattered, and not left in windrows and kept a minimum of 10 feet back from the road edge. Stumps shall be set upright, not left on edge, and be moved at least 10 feet away from the road edge. Disturbed soil shall be feathered into the woods and not left in berms or windrows.

##### 4.1.7 - Road closure (10/11)

All new roads built into the sale must be blocked to vehicle traffic upon completion of the sale. In general, this will require constructing a four (4') foot high berm of stumps and logs covered with earth. Stumps and brush must be placed along the remainder of the trail. These roads must be rendered impassable to cars and trucks. All stumps from road building and landing construction must be reserved to block any newly constructed roads upon completion of the sale. These stumps must be scattered along the road system to prohibit vehicular movement. Contact the sale administrator for specific details of design and placement.

#### 4.2 - Maintenance

##### 4.2.1 - Hauling restriction (12/08)

Hauling may be restricted on forest roads by the Unit Manager or his/her representative. The restriction may occur during wet weather conditions.

#### 4.2.3 - Road maintenance (8/13)

The following road maintenance is required: Within 60 days of completion of hauling, or if no hauling occurs for 60 days, the road must be maintained and graded. This includes cleaning of drainage areas, grading, crowning and filling with gravel, if necessary. Damages will be assessed if grading/repair does not occur.

#### 4.2.5 - Two wheel drive condition (2/04)

All existing trail roads on and adjacent to the sale area must be passable by two-wheel drive traffic for the duration of the sale.

### 4.4 - Access

#### 4.4.1 - Private property access (3/11)

Permission for access across private land is the responsibility of the Purchaser. A copy of the written permission from the private landowner must be given to the Unit Manager within 30 days of the bid opening and prior to the beginning of operations.

ALTERNATIVE ROUTE: If permission is not obtained to cross private land, it will be necessary to build a road into the timber sale. It will be the responsibility of the Purchaser to construct the new road (location 'A.' on the Timber Sale Map).

## 5 - Operations

### 5.2 - Conduct of Operations

#### 5.2.1 - Slash

##### 5.2.1.8 - Slash height (12/08)

No slash or tree tops may exceed 24 inches in height.

#### 5.2.2 - Hazard Trees/Snags

##### 5.2.2.1 - Den trees (2/04)

Obvious hollow and/or den trees shall be protected and left standing unless they are a safety hazard.

#### 5.2.3 - Operating Restrictions

##### 5.2.3.11 - Coppice regeneration protection (4/10)

Timber harvesting in any Payment Unit must be completed before significant aspen sprouting occurs in that Payment Unit so as to minimize damage to the new regeneration. Any post harvest operations, such as chipping, must be completed before sprouting of regeneration occurs. If it is anticipated that chipping will be delayed, then tops shall be carried to one central location or left unchipped. The Unit Manager or his/her representative may cease such operations if sprouting occurs before the operation is complete.

#### 5.2.17 - Crane Mats/Timber Mats (10/14)

If Purchaser is to construct new road at Location (A.) on Timber Sale Map, the road may require extra protection such as that afforded by Crane Mats/Timber Mats. If available, Crane Mats/Timber Mats may be borrowed from the DNR and are located at the Marquette ICC and the Grayling Field Office. Contact the sale administrator for specific details. A Timber Sale Contract Supplement will be used to document the Purchaser's use of the DNR's Crane Mats/Timber Mats. It is the responsibility of the Purchaser to contact the sale administrator to schedule pick up and drop off. In addition, all mats must be cleaned prior to drop off. A charge of \$350.00 will be assessed for all damaged or non-returned mats. Damage is defined as misuse resulting in three or more broken cants.

#### 5.2.32 - Decking/landing restoration (9/13)

All decking and landing areas must have the surface area restored to a condition equal to or better than before. This is to ensure the proper regeneration of the stand. Wood debris, chips and "cookies" from trimmings must be removed or scattered away from landing and loading areas and may not be windrowed on the edge.

#### 5.2.38 - No decking against live trees (2/04)

Cut products may not be decked against unmarked or designated leave trees.

#### 5.2.40 - Pathway protection (10/10)

The "Midland to Mackinaw" pathway is shared with Ingleson Dr. on the east side of Payment Unit #2. Do not cut trees or

damage posts with blue pathway markers. Maintain a 20-foot wide slash, debris, and rut free zone daily, using the pathway as the centerline.

#### 5.4 - Soil Protection

##### 5.4.1 - Rutting restriction, general (7/16)

Operations are to cease immediately if equipment and weather conditions result in rutting of roads and/or skid trails which is 12 inches or greater in depth and 50 feet in length. The Unit Manager or his/her representative may restrict hauling and/or skidding if ruts exceed the specified depth. With the Unit Manager or his/her representative's approval, the Purchaser may return to the area when the risk of rutting has decreased.

### 6 - Safety and Fire Prevention

#### 6.2 - Signing

##### 6.2.1 - Road posting (9/09)

The Purchaser is responsible for posting and maintaining caution signs on Saint Helen Rd and Pine Rd. This shall be done prior to beginning operations. The road must be posted at appropriate distances from the sale area to warn of logging activity and truck traffic. Signs must be removed when harvest operations are suspended or completed. The Purchaser will provide these signs.



# TIMBER SALE MAP

This information provided by authority of Part 525, 1994 PA 451, as amended.

Forest Management Unit	County	Mapped By	Date	Page	of
Roscommon	Roscommon	Charlie VanKalker	10/25/2016	1	1
		Cruised By			
		Charlie VanKalker			

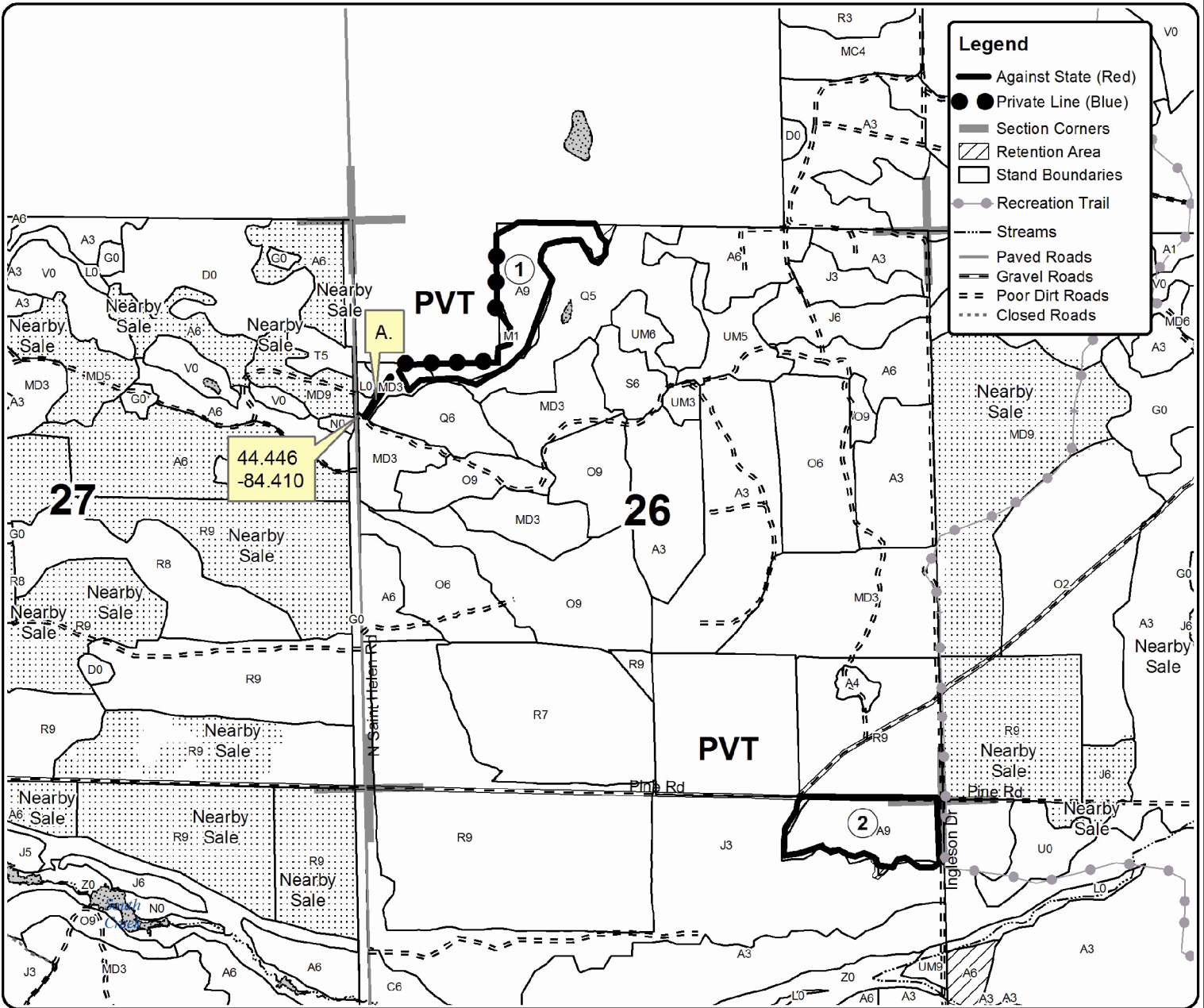
Township	Range	Section(s) and Subdivision(s)	Scale
24N	01W	Sec.26: S1/2NW, NENW    Sec.35: N1/2NE	1:15,840

Cover Type				Density			
A = Aspen	H = Hemlock	N = Marsh	U = Upland Brush	0 = Non Stocked	5 = Pole Timber Medium		
B = Paper Birch	J = Jack Pine	O = Oak	UM = Upland Mixed	1 = Seedling Sapling Poor	6 = Pole Timber Well		
C = Cedar	L = Lowland Brush	P = Lowland Poplar	V = Bog or Marsh	2 = Seedling Sapling Medium	7 = Saw Timber Poor		
D = Treed Bog	LM = Lowland Mixed	Q = Mixed Swamp Conifer	W = White Pine	3 = Seedling Sapling Well	8 = Saw Timber Medium		
E = Swamp Hdwoods	M = Mpl, Bch, Brch	R = Red Pine	X = Non Stocked	4 = Pole Timber Poor	9 = Saw Timber Well		
F = Spruce Fir	MD = Mixed Deciduous	S = Black Spruce	Z = Water				
G = Grass							

PU	Acres
1	16.5
2	17.9

## Backyard Aspen

Compartment 49  
34.4 Acres





## TIMBER SALE INFORMATION

### Spruce Anyone (71-023-16)

Roscommon County (Advertised Price \$5,710.20)

SALE NOTE: This sale will be restricted to operations being during the winter months due to the soils within the unit being poorly drained and have the potential for rutting, and the access route into the sale area is through a wildlife food plot. To lessen the chance of damage to the food plot such as soil compaction, etc., frozen ground is required

Due to the sensitive soils the sale area encompasses, harvesting equipment operating within the sale shall be tracked to lessen the ground pressure footprint of that piece of equipment. Wheeled units with tracks will be allowed.

A timber sale contract for this lump sum, sealed bid timber sale will be awarded to the responsible bidder offering the highest sealed bid price. Bids must be at or above the following advertised price for each species:

<u>PRODUCTS &amp; SPECIES</u>	<u>ESTIMATED UNITS*</u>	<u>ADVERTISED PRICE</u>
Sawtimber		
Black Spruce	16.20 MBF	\$ 40.00 / MBF
Pulpwood		
Balsam Fir	4.00 Cords	\$ 12.95 / Cord
BI/R/Hybrid Oak	2.00 Cords	\$ 10.40 / Cord
Black Spruce	204.00 Cords	\$ 19.80 / Cord
Paper Birch	9.00 Cords	\$ 11.45 / Cord
Quaking Aspen	21.00 Cords	\$ 25.15 / Cord
Red Maple	24.00 Cords	\$ 13.30 / Cord

\* The total volume is statistically estimated within plus (+) or minus (-) 17.26 percent. The estimated units are final and not subject to adjustment. Prospective bidders are urged to examine this timber and to make their own estimates of quantity and quality.

#### **BOND AND PAYMENT SCHEDULE:**

1. A bond in the amount of \$286.00 to insure faithful performance of the conditions of the contract will be deposited by the successful bidder within 21 days of the sale award.
2. Cutting in any sale or unit without the required advance payment would be considered a trespass.
3. Total payment must be paid in advance or according to the following schedule:
  - (a) Ten percent (10%) of the sale value must be paid within 21 days of the sale award.
  - (b) The 10% down payment will be credited towards the first unit cut.
4. If no cutting takes place, the 10% down payment will not be refunded.
5. Operations on the contract issued will terminate on 06/30/2019.

#### **Description of Timber by Payment Unit (PU)**

PU	MARKET GROUP	PRODUCT	QUANTITY	UNIT	ACRES	ADVERTISE PRICE
1	Black Spruce	Sawtimber	9.8	MBF	9.7	\$2,090.05
	Balsam Fir	Pulpwood	4.0	Cords		
	BI/R/Hybrid Oak		2.0	Cords		
	Black Spruce		58.0	Cords		
	Paper Birch		5.0	Cords		
	Quaking Aspen		4.0	Cords		
	Red Maple		24.0	Cords		
	2	Black Spruce	Sawtimber	6.4		
Black Spruce		Pulpwood	146.0	Cords		
Paper Birch			4.0	Cords		
Quaking Aspen			17.0	Cords		
TOTAL:			16.2	MBF		
TOTAL:			264.0	Cords		

# Sale Specific Conditions & Requirements

**Sale Name: Spruce Anyone**

**Sale Number: 71-023-16 Seq#: 2**

## 1 - Sale Area

### 1.2 - Boundaries

#### 1.2.1 - Painted boundaries (1/14)

The sale boundary and Payment Unit boundaries are marked and identified by red and yellow paint. Exterior sale boundary lines against state are marked with red paint. Interior Payment Unit boundaries are marked with yellow paint. The painted boundary line trees are not Included Timber and are to be protected. Yellow painted trees designating an interior Payment Unit boundary are only to be cut when all surrounding Payment Units have been paid.

## 2 - Timber Specifications

### 2.1 - Included Timber

#### 2.1.1 - Clearcut unit(s) with unmerchantable trees (6/14)

Within Payment Unit(s) 1 and 2, cut all trees that are two (2) inches or more at DBH with the following exceptions:

Within Payment Unit 1, do not cut any red pine trees. Also, do not cut any white pine with a DBH of 16 inches and greater. In addition, do not cut any trees with green paint above and below stump height.

Within Payment Unit 2, do not cut any cedar trees. In addition, do not cut any trees with green paint above and below stump height.

### 2.2 - Utilization

#### 2.2.3 - Stump heights (4/07)

Stump heights within the Sale Area shall not exceed 6 inches for all trees.

#### 2.2.10 - No chipping tops and limbs (8/16)

Within Payment Unit(s) 1 and 2, chipping of limbs or tops is not permitted. Limbs and the remaining top must be left on site and scattered.

## 3 - Payments

### 3.4 - Damaged Timber

#### 3.4.1 - Damaged timber (6/14)

General Condition and Requirement 3.4 Damaged Timber, defines liquidated damages for undesignated live merchantable trees which are cut or injured. In addition, extreme care should be taken to avoid damage to tree seedlings and saplings.

Within the sale area, if more than 30% of the tree seedlings or saplings (1/4" to 4.5" DBH) within a specified portion of the sale area are damaged, liquidated damages will be assessed at \$300 per acre for all acreage within that specified portion of the sale area that was damaged.

No damage is acceptable to merchantable trees. Within the sale area, if more than 5% of trees (> 4.5" DBH) within a specified area of the sale are damaged, liquidated damages will be assessed for all trees damaged. Rates will be in accordance with General Condition and Requirement 3.4 Damaged Timber.

## 4 - Transportation

### 4.1 - Construction

#### 4.1.3 - Slash and earthen piles (8/04)

Piles or windrows of earth along roads and landings that have been widened or constructed shall be leveled. Slash from road maintenance or construction, including stumps, shall be dispersed throughout the sale.

#### 4.1.6 - Road construction (1/09)

Improvements of existing roads shall be done in such a way as to minimize the environmental and visual impacts. Merchantable trees shall be cut and utilized unless otherwise directed. Non-merchantable trees shall be severed and laid flat on the ground. Slash shall be scattered, and not left in windrows and kept a minimum of 10 feet back from the road edge. Stumps shall be set upright, not left on edge, and be moved at least 10 feet away from the road edge. Disturbed soil shall be feathered into the woods and not left in berms or windrows.

#### 4.1.8 - Road work (1) (8/07)

The following road work will be allowed within the operations of the timber sale: The sharp "S" curves on the existing two-track immediately south of W. Pine Drive may be straightened out to allow better access. Debris from this activity shall be scattered out into the immediate surrounding area and/or utilized with no materials being placed into the wildlife food plot to the immediate south. Removal of snow is allowed from the haul route through the food plot, however only minimal disturbance to the underlying soil/vegetation will be allowed.

#### 4.1.10 - Oversight (12/08)

The Unit Manager, or his/her representative, must be present when the road improvement project is initiated.

#### 4.1.12 - No new roads (1/12)

No new roads will be permitted in any Payment Unit. All operations are limited to existing roads. Skid trails only will be allowed.

### 4.2 - Maintenance

#### 4.2.3 - Road maintenance (8/13)

The following road maintenance is required: Within 60 days of completion of hauling, or if no hauling occurs for 60 days, the road must be maintained and graded to its condition prior to usage. This may include cleaning of drainage areas, grading, crowning and filling with gravel, if necessary. Damages will be assessed if grading/repair does not occur.

## 5 - Operations

### 5.1 - Notification

#### 5.1.1 - Pre-sale conference (10/16)

A pre-sale conference on site between the Purchaser and sale administrator is required prior to beginning any operations to determine landing and road improvement restrictions.

#### 5.1.4 - Post-sale conference (6/11)

A post-sale conference on site between the Purchaser and sale administrator is required 5 days prior to the completion of active logging operations to determine clean-up and repair of landings, road edges, and the fulfillment of other contract specifications.

### 5.2 - Conduct of Operations

#### 5.2.1 - Slash

##### 5.2.1.8 - Slash height (12/08)

No slash or tree tops may exceed 24 inches in height.

##### 5.2.1.10 - No slash in openings (5/10)

No brush or logging debris is to be left in the maintained wildlife opening which is indicated by G0 on the Timber Sale Map. Any damage to the opening shall be repaired according to specifications of the Unit Manager or his/her representative. Only hauling is allowed on the existing two-track identified by the timber sale administrator.

#### 5.2.2 - Hazard Trees/Snags

##### 5.2.2.1 - Den trees (2/04)

Obvious hollow and/or den trees shall be protected and left standing unless they are a safety hazard.

#### 5.2.3 - Operating Restrictions

##### 5.2.3.1 - Operating restrictions (9/11)

Within Payment Unit(s) 1 and 2, cutting, skidding, and hauling are limited to the period of December 01 to March 15. This restriction is because of wet soils and lessen impact to the wildlife opening the haul route is going through.

## 5.2.4 - Dead and Down Creation

### 5.2.4.2 - Dead and down creation, hare and grouse (1/14)

To improve habitat for snowshoe hare, grouse, and other species, the Purchaser is to leave one brush pile on the ground for every two acres. These piles should be scattered along the west side of the sale boundary. If possible, two or more pieces of log or tree, with a minimum length of 5 feet and 6 inches in diameter, should be felled so they overlap. They can be of any tree species and can be an un-merchantable pieces of wood, a full tree, or any combination of each. Then these pieces need to be covered with smaller limbs/brush creating a "pile."

### 5.2.18 - Equipment requirements (1/09)

Harvesting equipment must either be tracked or have large flotation type tires. Tracks placed over the tires to distribute the weight will be allowed.

### 5.2.31 - Landing locations (9/13)

The landing must be confined to within the sale boundary and not extend out into the wildlife opening.

### 5.2.32 - Decking/landing restoration (9/13)

All decking and landing areas must have the surface area restored to a condition equal to or better than before. This is to ensure the proper regeneration of the stand. Upon sale completion, all debris must be scattered uniformly over the landing locations closing this off from potential future vehicle use.

## 5.4 - Soil Protection

### 5.4.1 - Rutting restriction, general (7/16)

Operations are to cease immediately if equipment and weather conditions result in rutting of roads and/or skid trails which is 12 inches or greater in depth and 50 feet in length. The Unit Manager or his/her representative may restrict hauling and/or skidding if ruts exceed the specified depth. With the Unit Manager or his/her representative's approval, the Purchaser may return to the area when the risk of rutting has decreased.

### 5.4.5 - Soil caution (11/04)

Care must be taken to minimize soil damage due to the saturated organic soils.

## 7 - Other Conditions

### 7.2 - Extensions

#### 7.2.5 - Weather related extension (1/13)

If weather conditions during the operating period of this contract prevent harvesting, this sale may qualify for a weather related extension. If approved, the normal extension fee would be waived. To qualify, there must be a documented attempt each year to harvest in the difficult portion of the sale.



# TIMBER SALE MAP

This information provided by authority of Part 525, 1994 PA 451, as amended.

Sale Number	Year
71-023	16

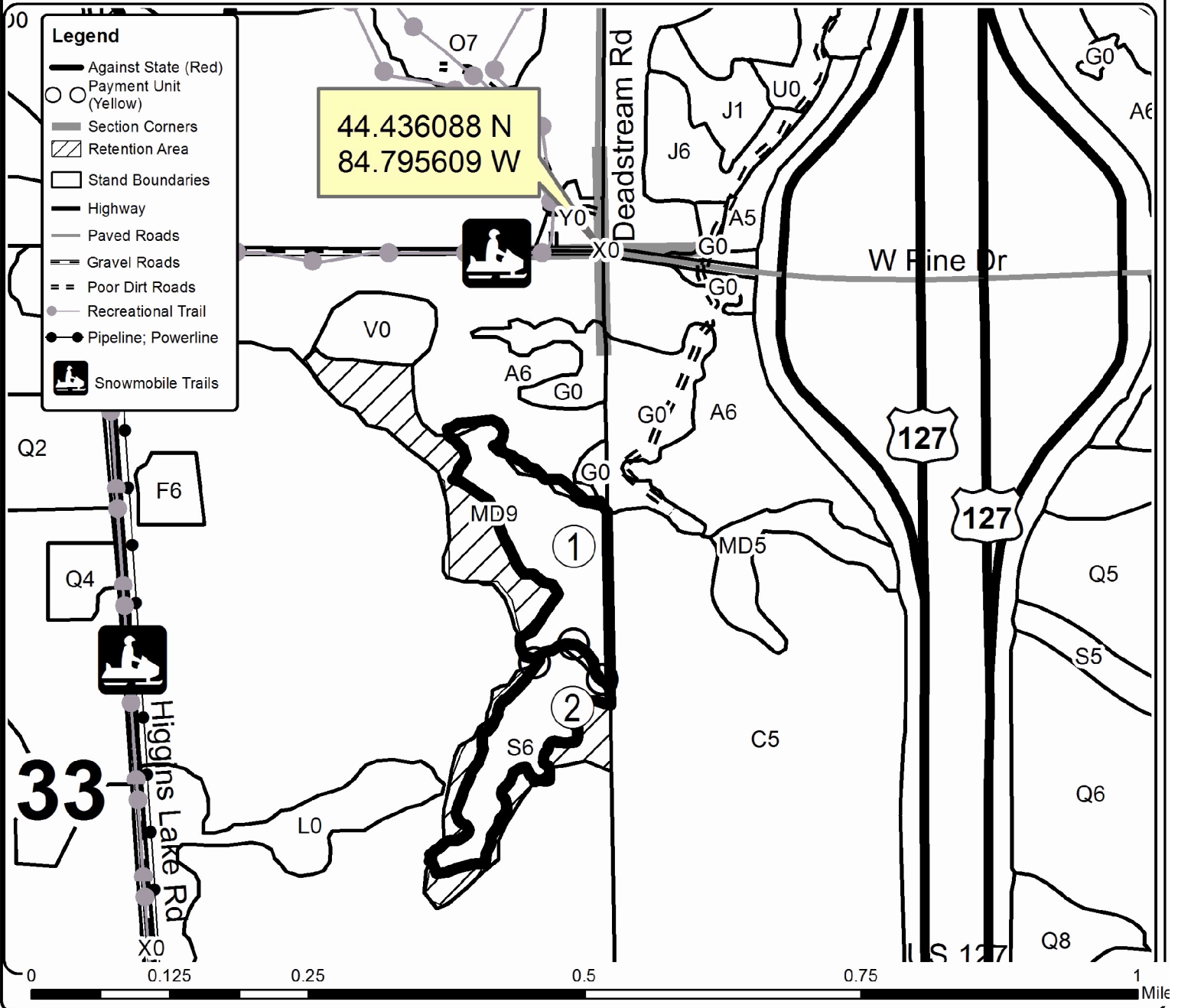
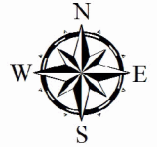
Forest Management Unit Roscommon	County Roscommon	Mapped By Bates	Date 10/04/2016	Page 1	of 1
Township 24N	Range 04W	Section(s) and Subdivision(s) 33 - E1/2NE; NESE	Scale 1:7,920		

Cover Type				Density			
A = Aspen	H = Hemlock	N = Marsh	U = Upland Brush	0 = Non Stocked	5 = Pole Timber Medium		
B = Paper Birch	J = Jack Pine	O = Oak	UM = Upland Mixed	1 = Seedling Sapling Poor	6 = Pole Timber Well		
C = Cedar	L = Lowland Brush	P = Lowland Poplar	V = Bog or Marsh	2 = Seedling Sapling Medium	7 = Saw Timber Poor		
D = Treed Bog	LM = Lowland Mixed	Q = Mixed Swamp Conifer	W = White Pine	3 = Seedling Sapling Well	8 = Saw Timber Medium		
E = Swamp Hdwoods	M = Mpl, Bch, Brch	R = Red Pine	X = Non Stocked	4 = Pole Timber Poor	9 = Saw Timber Well		
F = Spruce Fir	MC = Mixed Conifer	S = Black Spruce	Z = Water				
G = Grass	MD = Mixed Deciduous	T = Tamarack					

PU	Acres
1	9.7
2	7.0

## Spruce Anyone

Compartment 27  
16.7 Acres





Hot Tub Oak (71-015-16)  
 ; Ogemaw COUNTY

In response to the notice of sale to be held 11:00 a.m. (local time) on April 19, 2017, I am hereby submitting my sealed bid (firm offer) for the following forest products to be cut. Bids for individual species must be at or above the advertised price. All non-responsive bid forms may be rejected.

<u>PRODUCTS &amp; SPECIES</u>	<u>ESTIMATED VOLUME*</u>	<u>ADVERTISED PRICE</u>	<u>BID PRICE</u>
<b>Sawtimber</b>			
BI/R/Hybrid Oak	103.10 MBF	\$ 116.00/MBF	\$ _____
Red Oak	25.40 MBF	\$ 189.00/MBF	\$ _____
White Oak	4.60 MBF	\$ 63.00/MBF	\$ _____
<b>Pulpwood</b>			
B. T. Aspen	11.00 Cords	\$ 37.70/Cord	\$ _____
BI/R/Hybrid Oak	267.00 Cords	\$ 15.55/Cord	\$ _____
Red Maple	30.00 Cords	\$ 19.90/Cord	\$ _____
Red Oak	31.00 Cords	\$ 15.55/Cord	\$ _____
Red Pine	3.00 Cords	\$ 49.00/Cord	\$ _____
White Oak	21.00 Cords	\$ 15.55/Cord	\$ _____
White Pine	4.00 Cords	\$ 22.50/Cord	\$ _____

\*The volumes are statistically estimated within plus (+) or minus (-) 17.93 percent. These estimated volumes are final and not subject to adjustment. Prospective bidders are urged to examine this timber and to make their own estimates of quantity and quality.

I understand that any or all bids may be rejected. All bids must be signed and all bid items must be bid or the bid form may be rejected. I also understand that consideration and awarding a contract will be based upon my past performance and ability to complete the contract based upon equipment and staffing subject to my control.

FEDERAL ID: \_\_\_\_\_ or SOCIAL SECURITY NUMBER: \_\_\_\_\_  
 Company or individual bidding: \_\_\_\_\_  
 Company representative's name: \_\_\_\_\_  
 Address: \_\_\_\_\_  
 City: \_\_\_\_\_ State: \_\_\_\_\_ Zip: \_\_\_\_\_

IF AVAILABLE, PLEASE PLACE THE PERSONALIZED LABEL FROM YOUR PROSPECTUS IN THE ABOVE BOX.

Individual or company representative's signature: \_\_\_\_\_ Date: \_\_\_\_\_

Phone number : \_\_\_\_\_ Email (optional): \_\_\_\_\_

**THE WINNING BIDDER MUST COMPLETE THE VERIFICATION OF WORKER'S DISABILITY COMPENSATION ACT COMPLIANCE (ON REVERSE SIDE IF DOUBLE SIDED) WITHIN 21 DAYS OF SALE AWARD DATE**



<b>FOR DEPARTMENT USE ONLY</b>
Sale Number (XX - XXX - XX - XX)
Forest Management Unit:

## TIMBER SALE VERIFICATION OF WORKER'S DISABILITY COMPENSATION ACT COMPLIANCE

*As required by Act 317, P.A. 1969 (Worker's Compensation) and  
Part 5 of Act 451 of 1994, as amended.*

### VERIFICATION OF WORKER'S DISABILITY COMPENSATION ACT COMPLIANCE

- This verification must be completed and submitted within 21 days of contract award and prior to the issuance of the timber sale contract.
- In addition, if boxes 2B or 2C are checked, then Notice of Exclusion or Certificate of Insurance must be submitted within twenty-one (21) days of the contract award and prior to the issuance of the timber sale contract.
- All information must be typed or printed except for written signatures.

Please Check Appropriate Categories:

1. My business is organized as (you **must** check one of the boxes below):
  - A.  Sole Proprietorship (individual)
  - B.  Partnership
  - C.  Corporation
  
2. You **must** check one of the boxes below:
  - A.  I certify my business is a sole proprietorship and it has no employees but the sole proprietor. I am not subject to the Worker's Compensation Laws.
  - B.  I certify my business has satisfied its obligation to the Worker's Compensation Act through the use of an approved Notice of Exclusion (BWC-337, Rev. 5/96). I will provide a copy of the Notice of Exclusion within 21 days of the contract award. (For questions or a copy of the BWC-337, please call the Worker's Compensation Bureau at 517-322-1195).
  - C.  I certify my business has a Worker's Compensation Policy. I will provide an original Certificate of Insurance within twenty-one (21) days of the contract award.
  
3. If you have checked item 2(A) or 2(B), you **must** indicate the number of **both** full-time and part-time employees, other than yourself, including family members and active partners (if none, you must enter "0").

\_\_\_\_\_ Full-time Employees

\_\_\_\_\_ Part-time Employees

Name of Business		Federal ID (or) Social Security No.	
Address		Telephone (       )	
City	State	ZIP	

*I hereby certify that the above information is true and correct. I agree to notify the Michigan DNR of any changes that occur in factors affecting my coverage during any of my present and future operations.*

\_\_\_\_\_  
Signature of Owner or Authorized Representative

\_\_\_\_\_  
Title

\_\_\_\_\_  
Date

**Please complete the "SEALED BID" information on the next page**



Backyard Aspen (71-017-16)  
 ; Roscommon COUNTY

In response to the notice of sale to be held 11:00 a.m. (local time) on April 19, 2017, I am hereby submitting my sealed bid (firm offer) for the following forest products to be cut. Bids for individual species must be at or above the advertised price. All non-responsive bid forms may be rejected.

<u>PRODUCTS &amp; SPECIES</u>	<u>ESTIMATED VOLUME*</u>	<u>ADVERTISED PRICE</u>	<u>BID PRICE</u>
<b>Sawtimber</b>			
B. T. Aspen	23.10 MBF	\$ 72.00/MBF	\$ _____
Bl/R/Hybrid Oak	15.30 MBF	\$ 108.00/MBF	\$ _____
Quaking Aspen	12.10 MBF	\$ 72.00/MBF	\$ _____
Red Maple	10.60 MBF	\$ 46.00/MBF	\$ _____
White Pine	4.30 MBF	\$ 97.00/MBF	\$ _____
<b>Pulpwood</b>			
Bl/R/Hybrid Oak	61.00 Cords	\$ 14.55/Cord	\$ _____
Jack Pine	13.00 Cords	\$ 14.85/Cord	\$ _____
Mixed Aspen	477.00 Cords	\$ 35.20/Cord	\$ _____
Paper Birch	16.00 Cords	\$ 16.05/Cord	\$ _____
Red Maple	128.00 Cords	\$ 18.60/Cord	\$ _____
Red Pine	9.00 Cords	\$ 45.75/Cord	\$ _____
White Pine	23.00 Cords	\$ 21.00/Cord	\$ _____

\*The volumes are statistically estimated within plus (+) or minus (-) 13.89 percent. These estimated volumes are final and not subject to adjustment. Prospective bidders are urged to examine this timber and to make their own estimates of quantity and quality.

I understand that any or all bids may be rejected. All bids must be signed and all bid items must be bid or the bid form may be rejected. I also understand that consideration and awarding a contract will be based upon my past performance and ability to complete the contract based upon equipment and staffing subject to my control.

FEDERAL ID: \_\_\_\_\_ - \_\_\_\_\_ or SOCIAL SECURITY NUMBER: \_\_\_\_\_ - \_\_\_\_\_ - \_\_\_\_\_

Company or individual bidding: \_\_\_\_\_

Company representative's name: \_\_\_\_\_

Address: \_\_\_\_\_

City: \_\_\_\_\_ State: \_\_\_\_\_ Zip: \_\_\_\_\_

IF AVAILABLE, PLEASE PLACE THE PERSONALIZED LABEL FROM YOUR PROSPECTUS IN THE ABOVE BOX.

Individual or company representative's signature: \_\_\_\_\_ Date: \_\_\_\_\_

Phone number : \_\_\_\_\_ Email (optional): \_\_\_\_\_

**THE WINNING BIDDER MUST COMPLETE THE VERIFICATION OF WORKER'S DISABILITY COMPENSATION ACT COMPLIANCE (ON REVERSE SIDE IF DOUBLE SIDED) WITHIN 21 DAYS OF SALE AWARD DATE**



Spruce Anyone (71-023-16)  
; Roscommon COUNTY

In response to the notice of sale to be held 11:00 a.m. (local time) on April 19, 2017, I am hereby submitting my sealed bid (firm offer) for the following forest products to be cut. Bids for individual species must be at or above the advertised price. All non-responsive bid forms may be rejected.

<u>PRODUCTS &amp; SPECIES</u>	<u>ESTIMATED VOLUME*</u>	<u>ADVERTISED PRICE</u>	<u>BID PRICE</u>
Sawtimber			
Black Spruce	16.20 MBF	\$ 40.00/MBF	\$ _____
Pulpwood			
Balsam Fir	4.00 Cords	\$ 12.95/Cord	\$ _____
Bl/R/Hybrid Oak	2.00 Cords	\$ 10.40/Cord	\$ _____
Black Spruce	204.00 Cords	\$ 19.80/Cord	\$ _____
Paper Birch	9.00 Cords	\$ 11.45/Cord	\$ _____
Quaking Aspen	21.00 Cords	\$ 25.15/Cord	\$ _____
Red Maple	24.00 Cords	\$ 13.30/Cord	\$ _____

\*The volumes are statistically estimated within plus (+) or minus (-) 17.26 percent. These estimated volumes are final and not subject to adjustment. Prospective bidders are urged to examine this timber and to make their own estimates of quantity and quality.

I understand that any or all bids may be rejected. All bids must be signed and all bid items must be bid or the bid form may be rejected. I also understand that consideration and awarding a contract will be based upon my past performance and ability to complete the contract based upon equipment and staffing subject to my control.

FEDERAL ID: \_\_\_\_\_ or SOCIAL SECURITY NUMBER: \_\_\_\_\_

Company or individual bidding: \_\_\_\_\_

Company representative's name: \_\_\_\_\_

Address: \_\_\_\_\_

City: \_\_\_\_\_ State: \_\_\_\_\_ Zip: \_\_\_\_\_

IF AVAILABLE, PLEASE PLACE THE PERSONALIZED LABEL FROM YOUR PROSPECTUS IN THE ABOVE BOX.

Individual or company representative's signature: \_\_\_\_\_ Date: \_\_\_\_\_

Phone number : \_\_\_\_\_ Email (optional): \_\_\_\_\_

**THE WINNING BIDDER MUST COMPLETE THE VERIFICATION OF WORKER'S DISABILITY COMPENSATION ACT COMPLIANCE (ON REVERSE SIDE IF DOUBLE SIDED) WITHIN 21 DAYS OF SALE AWARD DATE**



<b>FOR DEPARTMENT USE ONLY</b>
Sale Number (XX - XXX - XX - XX)
Forest Management Unit:

## TIMBER SALE VERIFICATION OF WORKER'S DISABILITY COMPENSATION ACT COMPLIANCE

*As required by Act 317, P.A. 1969 (Worker's Compensation) and  
Part 5 of Act 451 of 1994, as amended.*

### VERIFICATION OF WORKER'S DISABILITY COMPENSATION ACT COMPLIANCE

- This verification must be completed and submitted within 21 days of contract award and prior to the issuance of the timber sale contract.
- In addition, if boxes 2B or 2C are checked, then Notice of Exclusion or Certificate of Insurance must be submitted within twenty-one (21) days of the contract award and prior to the issuance of the timber sale contract.
- All information must be typed or printed except for written signatures.

Please Check Appropriate Categories:

1. My business is organized as (you **must** check one of the boxes below):
  - A.  Sole Proprietorship (individual)
  - B.  Partnership
  - C.  Corporation
2. You **must** check one of the boxes below:
  - A.  I certify my business is a sole proprietorship and it has no employees but the sole proprietor. I am not subject to the Worker's Compensation Laws.
  - B.  I certify my business has satisfied its obligation to the Worker's Compensation Act through the use of an approved Notice of Exclusion (BWC-337, Rev. 5/96). I will provide a copy of the Notice of Exclusion within 21 days of the contract award. (For questions or a copy of the BWC-337, please call the Worker's Compensation Bureau at 517-322-1195).
  - C.  I certify my business has a Worker's Compensation Policy. I will provide an original Certificate of Insurance within twenty-one (21) days of the contract award.
3. If you have checked item 2(A) or 2(B), you **must** indicate the number of **both** full-time and part-time employees, other than yourself, including family members and active partners (if none, you must enter "0").

\_\_\_\_\_ Full-time Employees

\_\_\_\_\_ Part-time Employees

Name of Business		Federal ID (or) Social Security No.	
Address		Telephone (       )	
City	State	ZIP	

*I hereby certify that the above information is true and correct. I agree to notify the Michigan DNR of any changes that occur in factors affecting my coverage during any of my present and future operations.*

\_\_\_\_\_  
Signature of Owner or Authorized Representative

\_\_\_\_\_  
Title

\_\_\_\_\_  
Date

**Please complete the "SEALED BID" information on the next page**