



**DEPARTMENT OF NATURAL RESOURCES  
STATE OF MICHIGAN**

**TIMBER SALE PROSPECTUS #5745**

SCHEDULED SALE DATE AND TIME: 3:00 p.m. (local time) on December 13, 2016.

LOCATION: ESCANABA OFFICE, 6833 HWY 2, 41 & M-35, GLADSTONE, MI 49837.

PROSPECTUS NOTE: The bidder is advised to inspect the sale area and review the location, estimated volumes, operating costs and contract terms of proposed sales. Please be aware that some landowners may request 60 days or more notice for access across their land.

Notice is hereby given that bids will be received by the Unit Manager, ESCANABA MANAGEMENT UNIT, for certain timber on the following described lands:

Pony Express Hardwood (33-032-16)

Menominee County, Advertised Price \$277,011.10, 198.9 Acres, Hardwood, N White Cedar.

SALE NOTE: Payment Units 1 - 6 may be accessed through state land (but Payment Units 2 - 6 are best accessed through private property), but Payment Units 7 - 11 can only be accessed through private property. The landowners have indicated they would work with a contractor to access the sale. There is some beech scale present within Payment Unit 5, but no mortality at this time. Two culverts will need to be purchased and installed by the purchaser.

Access may be through private land.

Powerline Divide ELB (33-033-16)

Menominee County, Advertised Price \$107,650.75, 149.3 Acres, Hardwood, N White Cedar.

SALE NOTE: The Eastern Larch Beetle has caused some tamarack mortality along the eastern edge of unit 8. The Purchaser should harvest this unit as soon as possible. The best access into units 2 - 7 is through private property. The purchaser will have to get written permission from one of the adjacent landowners. Some gravel will need to be hauled, in order to access unit 1.

Access may be through private land.

Checkerboard Hardwood SBW (33-034-16)

Menominee County, Advertised Price \$88,644.75, 113.0 Acres, Hardwood, Spruce/Fir/Tamarack.

SALE NOTE: The spruce budworm is present, there is some defoliation at this time, but no mortality. The best access into this sale is through private property off of Town Road. Three different landowners will need to be crossed, one of them is local and will provide guidance for access into the sale. The landowners will require that the Purchaser level the access road prior to starting harvesting and after all of the wood has been hauled. There is a culvert west of unit 2 on private land, that the landowner will require more fill spread over the top to prevent it from getting crushed.

Access may be through private land.

Blue Chair SBW (33-035-16)

Menominee County, Advertised Price \$85,852.20, 92.1 Acres, Hardwood, White Pine.

SALE NOTE: The spruce budworm is present, but only some minor defoliation has occurred at this time. The gate on the access road into Payment Units 1 and 2 is locked, the DNR will provide a key for it.

Pine Ridge Mix (33-036-16)

Menominee County, Advertised Price \$115,081.75, 104.2 Acres, Hardwood, Red Pine.

SALE NOTE: Payment Units 3, 4, part of 6, and 8 will be planted with red pine following the harvest. So, all trees greater than two (2) inches need to be cut and all stumps must cut off low.

## BID INSTRUCTIONS (VER. 09/02/2016):

### 1. Scheduled Bid Location, Date, and Time (2/11)

Bids must be received by the Unit Manager, ESCANABA OFFICE, 6833 HWY 2, 41 & M-35, GLADSTONE, MI 49837, no later than 3:00 p.m. (local time) on December 13, 2016. For further information concerning this sale, contact Eric Thompson at 906-786-2354.

### 2. Bidder's Qualifications (5/16)

Purchaser shall obtain workers compensation insurance to cover claims under Michigan's Worker's Disability Compensation Act of 1969 or similar employee benefit act of any other state applicable to an employee. If all or part of a timber sale was prepared by a private contractor, the contractor and that contractor's company are not permitted to bid on the timber sale contract. Bids will not be accepted from individuals or companies appearing on the DNR/FRD No-Bid List. This list contains the names of purchasers who previously failed to execute a contract within 21-days or who have a history of poor performance.

### 3. Preparation of Sealed Bids (5/16)

Bid Forms may be completed online thru Michigan DNR Timber Sale Online Bidding (OLB) at [www.michigan.gov/timberbidding](http://www.michigan.gov/timberbidding) or by completing the hardcopy Bid Form found in the Timber Sale Prospectus. Hardcopy Bid Forms shall be manually signed in ink. Registration in OLB is considered your 'signature' for all bids submitted thru that system. Bid prices must be entered for each species and product in the Bid Price column for all material subject to bidding and all fill-in blanks must be completed. If erasures or other changes appear on the hardcopy Bid Form, each erasure or change must be initialed by the person signing the bid.

### 4. Submission of Sealed Bids (5/16)

Bid forms may be obtained from the Unit Manager or thru OLB. Bids may be submitted hardcopy or thru OLB. All hardcopy bids must be submitted on the bid form and in an envelope clearly identified as described in this section. NOTE: Only one bid form per bid envelope. Sealed bids must be submitted to the Unit office designated in the prospectus and must be submitted at or prior to the time established in the prospectus. The envelope should show on the outside (a) the sale name or number and (b) the date and time of bid opening, as shown in the prospectus. Bids received after the time specified in the sale prospectus are late bids and will be rejected.

It is possible for a bidder to submit multiple bids on a single sale. For example, a bid may be submitted hardcopy and a bid may be submitted thru OLB. Or, two bidders from the same company could both submit bids on the same sale. If this were to happen, the State would accept all bids received and award the contract accordingly. All bidding and contractual requirements would apply to all bids received.

### 5. Public Opening of Sealed Bids (7/16)

If conditions permit, the sealed bids will be publicly opened and posted at the time and place set in the prospectus.

If a bidder, present at a bid opening, has submitted bids on more than one sale, that bidder may withdraw their unopened bid envelopes or announce the withdrawal of their online bid after being declared the successful bidder on one sale.

### 6. Award of Contract (1/11)

Award of the contract will be made to the Bidder whose bid, conforming to the prospectus, is most advantageous to the State of Michigan on the basis of total value at rates bid for the estimated quantities. The State reserves the right to reject any bid or waive any minor irregularity in bids received. A written award mailed (or otherwise furnished) to the successful Bidder shall be deemed to result in a binding contract without further action by either party.

### 7. Down Payment (1/11)

The Bidder to whom award is made must make a down payment within 21 days of the sale award. The amount of the down payment will be calculated as shown in the Bond and Payment Schedule of this prospectus. Only cash may be used to meet this requirement.

### 8. Performance Security (1/11)

As guarantee of faithful performance, a cash bond, certificate of deposit, surety bond or irrevocable letter of credit (LOC) is required within 21 days of the sale award. The amount of the performance security is shown in the Bond and

Payment Schedule of this prospectus. If an LOC or surety is used, the coverage must extend for at least 6 months beyond the contract expiration.

#### 9. Timber Sale Contract (9/14)

Additional conditions and requirements common to all timber sales are listed on the timber sale contract (R4031) and are available on line at [www.michigan.gov/timber](http://www.michigan.gov/timber). Contact the Unit Manager for additional information or a sample contract. Within 21 days of the date of the award letter, the bidder must sign the contract and provide the required down payment, performance security, and verification of worker's disability compensation. The down payment and performance security shall be in accordance with the provisions of the timber sale contract, in the sums stated in this prospectus. If these actions are not taken, then the Bidder, the Bidder's corporation, and the corporation's principals may not be permitted to bid on State timber sales for a period of 1 year. In addition, the Bidder certifies that if awarded this contract, the Bidder will complete the timber sale contract in accordance with its terms and any modifications thereof including requirements to purchase, cut, and remove the included timber by the expiration date.

#### 10. Disclaimer of Estimates and Bidder's Warranty of Inspection (7/16)

Before submitting this bid, the Bidder is advised and cautioned to inspect the sale area, review the requirements of the sale contract, and take other steps as may be reasonably necessary to ascertain the location, estimated volumes, construction estimates, and operating costs of the proposed sale. Failure to do so will not relieve the Bidder from responsibility for completing the contract.

The Bidder warrants that this bid is submitted solely on the basis of the Bidder's examination and inspection of the quality and quantity of the timber offered for sale and the Bidder's opinion of the value thereof and the costs of recovery. No reliance should be placed on the State of Michigan's estimates of timber quality, quantity or costs of recovery. Bidder further acknowledges that the State of Michigan: (i) expressly disclaims any warranty of fitness of timber for any purpose; (ii) offers this timber as is without any warranty of quality (merchantability) or quantity and (iii) expressly disclaims any warranty as to the quantity or quality of timber sold.

#### 11. Certification and Chain-of-Custody (10/14)

Unless otherwise indicated in the contract under section 7 – Other Conditions of the Sale Specific Conditions & Requirements, the area encompassed by this timber sale is certified to the standards of the Forest Stewardship Council (FSC) - Certificate #SCS-FM/COC-00090N and the Sustainable Forestry Initiative (SFI) - Certificate #NSF-SFIS-5Y031-SF5. Forest products from this sale may be delivered to the mill as "FSC 100% and / or SFI certified" as long as the contractor hauling the forest products is chain-of-custody (COC) certified or covered under a COC certificate from the destination mill. The purchaser is responsible for maintaining COC after leaving the sale area.

#### 12. Good Neighbor Authority (GNA) Requirements (7/16)

If the name of this timber sales contains the acronym GNA, it is authorized by the Good Neighbor Authority (GNA) and covered by various agreements between the U.S. Forest Service and the State. The timber sale occurs on federal land and the following conditions apply:

GNA contracts on US Forest Service land will not be awarded to purchasers on the Federal list of excluded parties. The System for Award Management (SAM) will be checked for active excluded parties prior to award of contract. In addition, the Bidder to whom award is made must complete an Assurance Regarding Felony Conviction or Tax Delinquent Status for Corporate Applicants (AD-3031).

#### 13. Good Neighbor Authority (GNA) Requirements, con't (9/16)

Bidder certifies, by signing this bid form, that to the best of Bidder's knowledge that the following representations are accurate and complete.

- a. That the Bidder and its principals are not presently debarred, suspended, proposed for debarment, declared ineligible, or voluntary excluded from timber sales (covered transactions) by any Federal department or agency.
- b. That the Bidder and its principals have not within a 3-year period preceding this bid been convicted of or had a civil judgment rendered against them for commission of fraud or a criminal offense in connection with obtaining, attempting to obtain, or performing a public (Federal, State, or local) transaction or contract under a public transaction; violation of Federal or State antitrust statutes or commission of embezzlement, theft, forgery, bribery, falsification or destruction of records, making false statements, or receiving stolen property.

c. That the Bidder and its principals are not presently indicted for or otherwise criminally or civilly charged by a governmental entity (Federal, State, or local) with commission of any of the offenses enumerated in paragraph b of this certification.

d. That the Bidder and its principals have not within a 3-year period preceding this bid had one or more public transactions (Federal, State, or local) terminated for breach or default of a timber or forest product contract.

Bidders that cannot certify this requirement, in whole or in part, shall submit an explanation with their bid.

KEITH CREAGH

Director



# TIMBER SALE INFORMATION

Pony Express Hardwood (33-032-16)

Menominee County (Advertised Price \$277,011.10)

SALE NOTE: Payment Units 1 - 6 may be accessed through state land (but Payment Units 2 - 6 are best accessed through private property), but Payment Units 7 - 11 can only be accessed through private property. The landowners have indicated they would work with a contractor to access the sale. There is some beech scale present within Payment Unit 5, but no mortality at this time. Two culverts will need to be purchased and installed by the purchaser.

Access may be through private land.

A timber sale contract for this lump sum, sealed bid timber sale will be awarded to the responsible bidder offering the highest sealed bid price. Bids must be at or above the following advertised price for each species:

<u>PRODUCTS &amp; SPECIES</u>	<u>ESTIMATED UNITS*</u>	<u>ADVERTISED PRICE</u>
Sawtimber		
Basswood	17.00 MBF	\$ 230.00 / MBF
Beech	18.00 MBF	\$ 55.00 / MBF
Black Ash	3.70 MBF	\$ 90.00 / MBF
Green Ash	46.30 MBF	\$ 90.00 / MBF
Red Maple	249.10 MBF	\$ 237.00 / MBF
Sugar Maple	98.10 MBF	\$ 406.00 / MBF
White Pine	16.30 MBF	\$ 75.00 / MBF
Yellow Birch	24.10 MBF	\$ 90.00 / MBF
Pulpwood		
Balsam Fir	157.00 Cords	\$ 28.45 / Cord
Hemlock	59.00 Cords	\$ 15.00 / Cord
Mixed Aspen	65.00 Cords	\$ 35.00 / Cord
Mixed Hardwood	3,216.00 Cords	\$ 35.75 / Cord
Mixed Spruce	7.00 Cords	\$ 26.00 / Cord
N. White Cedar	1,202.00 Cords	\$ 33.30 / Cord
Tamarack	8.00 Cords	\$ 17.85 / Cord
White Pine	59.00 Cords	\$ 40.75 / Cord

\* The estimated units are final and not subject to adjustment. Prospective bidders are urged to examine this timber and to make their own estimates of quantity and quality.

## BOND AND PAYMENT SCHEDULE:

1. A bond in the amount of \$13,851.00 to insure faithful performance of the conditions of the contract will be deposited by the successful bidder within 21 days of the sale award.
2. Cutting in any sale or unit without the required advance payment would be considered a trespass.
3. Total payment must be paid in advance or according to the following schedule:
  - (a) Ten percent (10%) of the sale value must be paid within 21 days of the sale award.
  - (b) The 10% down payment will be credited towards the first unit cut.
4. If no cutting takes place, the 10% down payment will not be refunded.
5. Operations on the contract issued will terminate on 09/30/2019.

**Description of Timber by Payment Unit (PU)**

PU	MARKET GROUP	PRODUCT	QUANTITY	UNIT	ACRES	ADVERTISE PRICE
1	Red Maple	Sawtimber	0.7	MBF	22.6	\$19,035.80
	White Pine		2.0	MBF		
	Balsam Fir	Pulpwood	51.0	Cords		
	Hemlock		6.0	Cords		
	Mixed Aspen		34.0	Cords		
	<i>Quaking Aspen</i>		34.0	<i>Cords</i>		
	Mixed Hardwood		227.0	Cords		
	<i>Balsam Poplar</i>		2.0	<i>Cords</i>		
	<i>Black Ash</i>		51.0	<i>Cords</i>		
	<i>Green Ash</i>		71.0	<i>Cords</i>		
	<i>Paper Birch</i>		3.0	<i>Cords</i>		
	<i>Red Maple</i>		92.0	<i>Cords</i>		
	<i>Yellow Birch</i>		8.0	<i>Cords</i>		
	Mixed Spruce		3.0	Cords		
	<i>Black Spruce</i>		3.0	<i>Cords</i>		
	N. White Cedar		198.0	Cords		
	Tamarack		8.0	Cords		
	White Pine		26.0	Cords		
	2	Green Ash	Sawtimber	0.8		
Red Maple			10.1	MBF		
White Pine			1.1	MBF		
Yellow Birch			1.0	MBF		
Balsam Fir		Pulpwood	28.0	Cords		
Hemlock			53.0	Cords		
Mixed Aspen			16.0	Cords		
<i>Quaking Aspen</i>			16.0	<i>Cords</i>		
Mixed Hardwood			457.0	Cords		
<i>Balsam Poplar</i>			6.0	<i>Cords</i>		
<i>Black Ash</i>			226.0	<i>Cords</i>		
<i>Green Ash</i>			23.0	<i>Cords</i>		
<i>Paper Birch</i>			3.0	<i>Cords</i>		
<i>Red Maple</i>			138.0	<i>Cords</i>		
<i>Yellow Birch</i>			61.0	<i>Cords</i>		
Mixed Spruce			1.0	Cords		
<i>Black Spruce</i>			1.0	<i>Cords</i>		
N. White Cedar			460.0	Cords		
White Pine			4.0	Cords		
3	Beech	Sawtimber	0.9	MBF	33.9	\$58,720.65
	Green Ash		3.3	MBF		
	Red Maple		118.1	MBF		
	Sugar Maple		21.9	MBF		
	Yellow Birch		7.2	MBF		
	Balsam Fir	Pulpwood	29.0	Cords		
	Mixed Hardwood		560.0	Cords		
	<i>Beech</i>		12.0	<i>Cords</i>		
	<i>Black Ash</i>		15.0	<i>Cords</i>		
	<i>Green Ash</i>		32.0	<i>Cords</i>		
	<i>Red Maple</i>		352.0	<i>Cords</i>		
	<i>Sugar Maple</i>		65.0	<i>Cords</i>		
	<i>Yellow Birch</i>		84.0	<i>Cords</i>		
4	Black Ash	Sawtimber	0.8	MBF	7.5	\$11,188.50
	Red Maple		9.3	MBF		
	Yellow Birch		0.6	MBF		
	Balsam Fir	Pulpwood	6.0	Cords		
	Mixed Aspen		7.0	Cords		
	<i>Quaking Aspen</i>		7.0	<i>Cords</i>		



Description of Timber by Payment Unit (PU), con't

PU	MARKET GROUP	PRODUCT	QUANTITY	UNIT	ACRES	ADVERTISE PRICE
4 con't	Mixed Hardwood	Pulpwood	116.0	Cords		
	<i>Black Ash</i>		37.0	<i>Cords</i>		
	<i>Green Ash</i>		7.0	<i>Cords</i>		
	<i>Paper Birch</i>		2.0	<i>Cords</i>		
	<i>Red Maple</i>		48.0	<i>Cords</i>		
	<i>Yellow Birch</i>		22.0	<i>Cords</i>		
	N. White Cedar		129.0	Cords		
5	Basswood	Sawtimber	3.6	MBF	24.9	\$35,179.40
	Beech		14.0	MBF		
	Green Ash		1.8	MBF		
	Red Maple		25.1	MBF		
	Sugar Maple		42.5	MBF		
	Balsam Fir	Pulpwood	11.0	Cords		
	Mixed Hardwood		277.0	Cords		
	<i>Basswood</i>		7.0	<i>Cords</i>		
	<i>Beech</i>		76.0	<i>Cords</i>		
	<i>Green Ash</i>		15.0	<i>Cords</i>		
	<i>Red Maple</i>		72.0	<i>Cords</i>		
	<i>Sugar Maple</i>		89.0	<i>Cords</i>		
	<i>Yellow Birch</i>		18.0	<i>Cords</i>		
	6	Basswood	Sawtimber	1.6		
Red Maple			6.5	MBF		
Sugar Maple			6.7	MBF		
Mixed Hardwood		Pulpwood	71.0	Cords		
<i>Basswood</i>			4.0	<i>Cords</i>		
<i>Green Ash</i>			5.0	<i>Cords</i>		
<i>Red Maple</i>			35.0	<i>Cords</i>		
<i>Sugar Maple</i>			27.0	<i>Cords</i>		
N. White Cedar			7.0	Cords		
7		Beech	Sawtimber	0.5	MBF	4.6
	Green Ash		1.3	MBF		
	Red Maple		5.6	MBF		
	White Pine		0.7	MBF		
	Yellow Birch		0.8	MBF		
	Balsam Fir	Pulpwood	10.0	Cords		
	Mixed Aspen		2.0	Cords		
	<i>Quaking Aspen</i>		2.0	<i>Cords</i>		
	Mixed Hardwood		108.0	Cords		
	<i>Beech</i>		5.0	<i>Cords</i>		
	<i>Green Ash</i>		14.0	<i>Cords</i>		
	<i>Red Maple</i>		80.0	<i>Cords</i>		
	<i>Yellow Birch</i>		9.0	<i>Cords</i>		
	N. White Cedar		47.0	Cords		
	White Pine		1.0	Cords		
8	Basswood	Sawtimber	11.8	MBF	16.9	\$31,547.90
	Beech		2.6	MBF		
	Green Ash		13.1	MBF		
	Red Maple		10.7	MBF		
	Sugar Maple		27.0	MBF		
	Yellow Birch		6.6	MBF		
	Balsam Fir	Pulpwood	5.0	Cords		
	Mixed Aspen		3.0	Cords		
	<i>B. T. Aspen</i>		3.0	<i>Cords</i>		
	Mixed Hardwood		343.0	Cords		
	<i>Basswood</i>		30.0	<i>Cords</i>		
	<i>Beech</i>		13.0	<i>Cords</i>		

**Description of Timber by Payment Unit (PU), con't**

PU	MARKET GROUP	PRODUCT	QUANTITY	UNIT	ACRES	ADVERTISE PRICE
8 con't	<i>Green Ash</i>	<i>Pulpwood</i>	43.0	<i>Cords</i>		
	<i>Paper Birch</i>		3.0	<i>Cords</i>		
	<i>Red Maple</i>		91.0	<i>Cords</i>		
	<i>Sugar Maple</i>		121.0	<i>Cords</i>		
	<i>Yellow Birch</i>		42.0	<i>Cords</i>		
	Mixed Spruce		3.0	<i>Cords</i>		
	<i>White Spruce</i>		3.0	<i>Cords</i>		
	N. White Cedar		25.0	<i>Cords</i>		
9	Black Ash	Sawtimber	2.9	MBF	20.7	\$29,689.15
	Green Ash		17.7	MBF		
	Red Maple		29.6	MBF		
	White Pine		1.4	MBF		
	Yellow Birch		7.0	MBF		
	Balsam Fir	Pulpwood	5.0	<i>Cords</i>		
	Mixed Aspen		3.0	<i>Cords</i>		
	<i>Quaking Aspen</i>		3.0	<i>Cords</i>		
	Mixed Hardwood		401.0	<i>Cords</i>		
	<i>Basswood</i>		13.0	<i>Cords</i>		
	<i>Black Ash</i>		96.0	<i>Cords</i>		
	<i>Green Ash</i>		83.0	<i>Cords</i>		
	<i>Red Maple</i>		117.0	<i>Cords</i>		
	<i>Yellow Birch</i>		92.0	<i>Cords</i>		
	N. White Cedar		164.0	<i>Cords</i>		
	White Pine		1.0	<i>Cords</i>		
10	Green Ash	Sawtimber	0.5	MBF	11.4	\$12,742.70
	Red Maple		10.6	MBF		
	White Pine		8.5	MBF		
	Mixed Hardwood	Pulpwood	242.0	<i>Cords</i>		
	<i>Black Ash</i>		41.0	<i>Cords</i>		
	<i>Green Ash</i>		14.0	<i>Cords</i>		
	<i>Red Maple</i>		147.0	<i>Cords</i>		
	<i>Yellow Birch</i>		40.0	<i>Cords</i>		
	White Pine		22.0	<i>Cords</i>		
11	Green Ash	Sawtimber	7.8	MBF	23.2	\$27,454.85
	Red Maple		22.8	MBF		
	White Pine		2.6	MBF		
	Yellow Birch		0.9	MBF		
	Balsam Fir	Pulpwood	12.0	<i>Cords</i>		
	Mixed Hardwood		414.0	<i>Cords</i>		
	<i>Balsam Poplar</i>		4.0	<i>Cords</i>		
	<i>Basswood</i>		6.0	<i>Cords</i>		
	<i>Black Ash</i>		36.0	<i>Cords</i>		
	<i>Green Ash</i>		78.0	<i>Cords</i>		
	<i>Red Maple</i>		225.0	<i>Cords</i>		
	<i>Yellow Birch</i>		65.0	<i>Cords</i>		
	N. White Cedar		172.0	<i>Cords</i>		
	White Pine		5.0	<i>Cords</i>		
TOTAL:			472.6	MBF		
TOTAL:			4,773.0	<i>Cords</i>		

## Sale Specific Conditions & Requirements

**Sale Name: Pony Express Hardwood**

**Sale Number: 33-032-16 Seq#: 1**

### 1 - Sale Area

#### 1.2 - Boundaries

##### 1.2.1 - Painted boundaries (1/14)

The sale boundary and Payment Unit boundaries are marked and identified by blue, red and yellow paint. Exterior sale boundary lines against private property are marked with blue paint. Exterior sale boundary lines against state are marked with red paint. Interior Payment Unit boundaries are marked with yellow paint. Yellow painted trees designating an interior Payment Unit boundary are only to be cut when all surrounding Payment Units have been paid for. All of the retention patches are bounded by red and/or blue paint and need to be protected; no harvesting activities may occur within these retention patches.

### 2 - Timber Specifications

#### 2.1 - Included Timber

##### 2.1.1 - Clearcut unit(s) with unmerchantable trees (6/14)

Within Payment Unit(s) 1 and 2, cut all trees that are four (4) inches or more at DBH; except trees marked with green paint.

Within Payment Unit 4, cut all trees that are four (4) inches or more at DBH; except hemlock, white pine, and trees marked with green paint.

Within Payment Units 7, 8, 9, and 11, cut all trees that are four (4) inches or more at DBH; except hemlock. In addition, within Payment Units 8 and 11, do not cut trees marked with green paint.

Within Payment Unit 10, cut all trees that are four (4) inches or more at DBH; except hemlock, cedar, and trees marked with green paint.

##### 2.1.2 - Clearcut unit(s) w/o unmerchantable trees (8/11)

Within Payment Unit(s) 6, cut all trees which meet minimum piece specifications in 2.2 Utilization; except trees marked with green paint.

Within Payment Unit 3, cut all trees that are five (5) inches or more at DBH; except hemlock, cedar, and trees marked with green paint.

##### 2.1.3 - Cut tree marked unit(s) (12/08)

Within Payment Unit(s) 5, all trees are designated for cutting when marked with orange paint above and below stump height, regardless of merchantability.

#### 2.2 - Utilization

##### 2.2.4 - Skidding length (2/14)

Skidding of unlimbed tops or lengths over 17 feet is not permissible unless approved by the Unit Manager or his/her representative.

### 3 - Payments

#### 3.3 - Pre-measured Sales

##### 3.3.4 - Dividing payment units (7/14)

Payment Unit(s) \$18,000 in value or greater may be divided at the request of the Purchaser and upon approval of the Unit Manager. Dividing Payment Units is a contract modification which requires a Timber Sale Contract Supplement. There will be only one division per Payment Unit.

### 4 - Transportation

#### 4.1 - Construction

#### 4.1.8 - Road work (1) (8/07)

The following road work is required prior to hauling any wood products: Two new corrugated steel culverts will need to be purchased and installed by the contractor. One culvert will need to be 24" inches in diameter by 24' long and the other will be 12" inches in diameter by 24' foot long. The culverts must have a minimum of twelve inches of gravel placed over them. The culverts are needed to improve cross drainage and to haul wood products. The culvert locations are shown on the timber sale map. Gravel is available from a state pit, that is approximately four miles from the sale.

#### 4.2 - Maintenance

##### 4.2.1 - Hauling restriction (12/08)

Hauling may be restricted on forest roads by the Unit Manager or his/her representative. The restriction may occur during spring breakup or during other wet weather conditions.

##### 4.2.4 - Grading (12/14)

For completion of the sale, state forest roads must be graded. In general, this will require a road grader or bull dozer to shape up the roads after forest products have been hauled off site. This includes cleaning of drainage areas, grading, crowning and filling with gravel, if necessary. The grading equipment to be used must be approved by the Unit Manager or his/her representative.

#### 4.4 - Access

##### 4.4.1 - Private property access (3/11)

Permission for access across private land is the responsibility of the Purchaser. The DNR has contacted the landowners and they have indicated they would work with a contractor to allow access. Once the Purchaser determines their access route, they must obtain written permission from the landowner(s), which should include DNR staff. A copy of the written permission must be given to the DNR.

### 5 - Operations

#### 5.2 - Conduct of Operations

##### 5.2.3 - Operating Restrictions

###### 5.2.3.1 - Operating restrictions (9/11)

Within Payment Unit(s) 1, 2, 4, 9, and 11, cutting and skidding are limited to the period of December 1st to March 31st, unless there is an extended dry or frozen period and the sale administrator approves of harvesting during that time period. This restriction is because of low wet ground within each of the units.

###### 5.2.3.3 - Bark slippage restriction (3/09)

Within Payment Unit(s) 5, cutting and skidding are not permitted during the period of April 15 to July 15. This restriction is because of bark slippage.

##### 5.2.22 - Operating Caution

###### 5.2.22.1 - Operating caution (6/11)

It is recommended, but not required, that within Payment Unit(s) 3, 6, 7, 8, and 10, cutting and skidding occur during dry summer or frozen winter conditions. The reason for the recommendation is because of some low ground within each of the units.

#### 5.4 - Soil Protection

##### 5.4.1 - Rutting restriction, general (7/16)

Operations are to cease immediately if equipment and weather conditions result in rutting of roads and/or skid trails which is 12 inches or greater in depth and 50 feet in length. The Unit Manager or his/her representative may restrict hauling and/or skidding if ruts exceed the specified depth. With the Unit Manager or his/her representative's approval, the Purchaser may return to the area when the risk of rutting has decreased.

### 7 - Other Conditions

#### 7.5 - Loss

#### 7.5.1 - Deteriorating timber (7/09)

The sale area has received damage from Beech Bark disease. The population of the beech scale was very low at the time of sale preparation, and no mortality has occurred yet. Payment Units 3 and 5 contain the majority of the beech within the sale. The Purchaser should harvest the wood as soon as possible. The Department of Natural Resources is held free of responsibility of any further damage or deterioration due to delay in harvesting.



# TIMBER SALE MAP

This information provided by authority of Part 525, 1994 PA 451, as amended.

Sale Number	Year
33-032	16

Forest Management Unit		County	Mapped By	Date	Page	of
Escanaba Management Unit		Menominee County	Beaudou	8/11/2016	1	1
Township	Range	Section(s) and Subdivision(s)		Scale		
34N	26W	Sec 12 - E1/2NW, E1/2SW, NWNE, SENE & NESE		1:15,840		

Cover Type				Density			
A = Aspen	H = Hemlock	N = Marsh	U = Upland Brush	0 = Non Stocked	5 = Pole Timber Medium		
B = Paper Birch	J = Jack Pine	O = Oak	UM = Upland Mixed	1 = Seedling Sapling Poor	6 = Pole Timber Well		
C = Cedar	L = Lowland Brush	P = Lowland Poplar	V = Bog or Marsh	2 = Seedling Sapling Medium	7 = Saw Timber Poor		
D = Treed Bog	LM = Lowland Mixed	Q = Mixed Swamp Conifer	W = White Pine	3 = Seedling Sapling Well	8 = Saw Timber Medium		
E = Swamp Hdwoods	M = Mpl, Bch, Brch	R = Red Pine	X = Non Stocked	4 = Pole Timber Poor	9 = Saw Timber Well		
F = Spruce Fir	MC = Mixed Conifer	S = Black Spruce	Z = Water				
G = Grass	MD = Mixed Deciduous	T = Tamarack					

PU	Acres	PU	Acres
1	22.6	7	4.6
2	26.2	8	16.9
3	33.9	9	20.7
4	7.5	10	11.4
5	24.9	11	23.2
6	7.0		

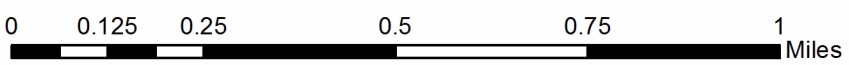
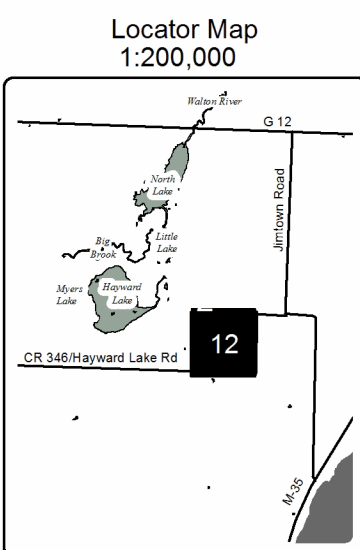
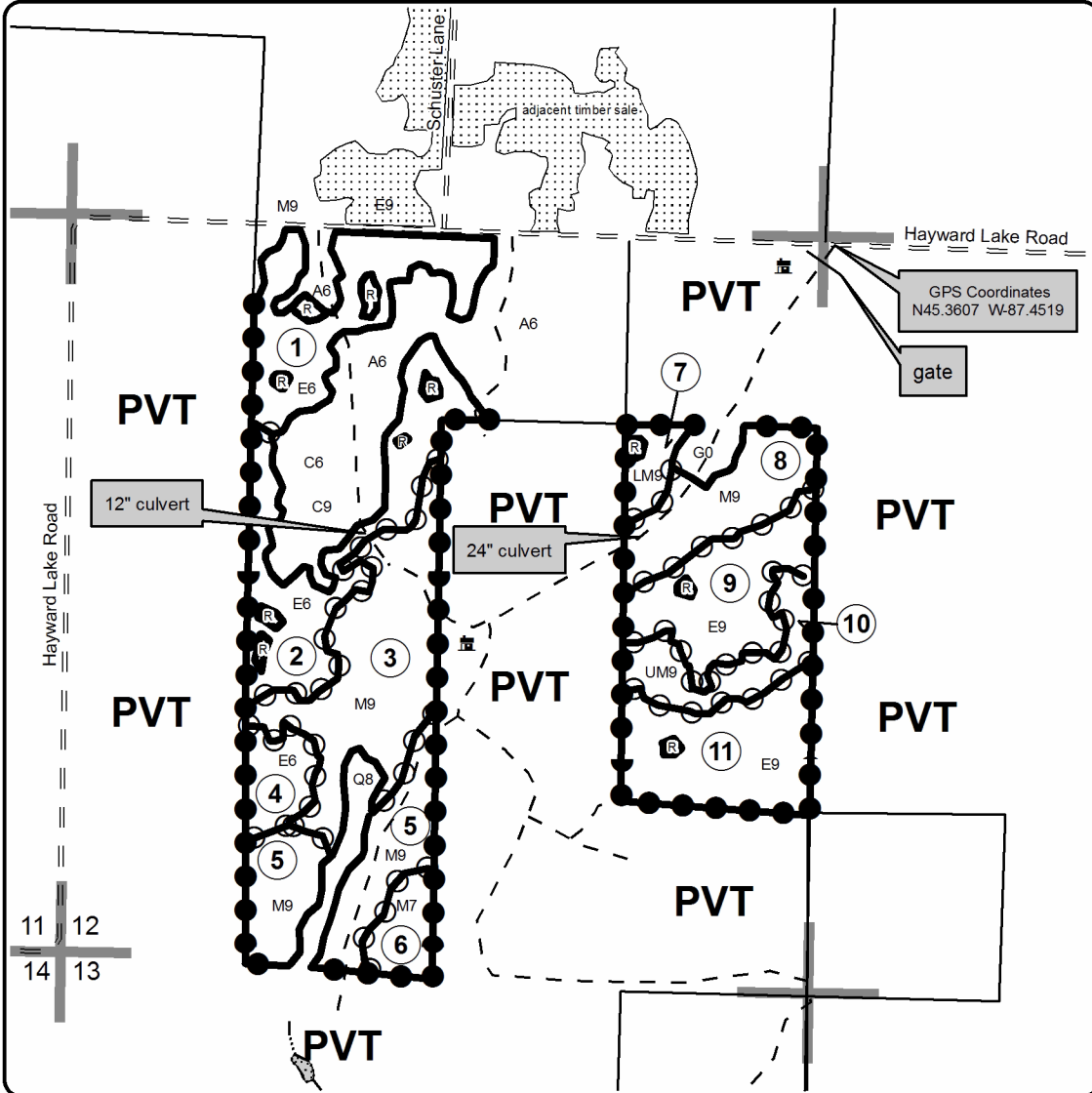
## Pony Express Hardwood

Compartment 61  
198.9 Acres



### Legend

- Against State (Red)
- Payment Unit (Yellow)
- Private Line (Blue)
- Section Corners
- 12 Section Number
- == County Gravel Road
- - - Two Track Road
- - - Stream
- State Land Boundary
- ① Payment Unit
- R Retention Patch
- PVT Private Property
- ▨ State Timber Sale
- 🏠 Cabin



# TIMBER SALE INFORMATION

## Powerline Divide ELB (33-033-16)

Menominee County (Advertised Price \$107,650.75)

SALE NOTE: The Eastern Larch Beetle has caused some tamarack mortality along the eastern edge of unit 8. The Purchaser should harvest this unit as soon as possible. The best access into units 2 - 7 is through private property. The purchaser will have to get written permission from one of the adjacent landowners. Some gravel will need to be hauled, in order to access unit 1.

Access may be through private land.

A timber sale contract for this lump sum, sealed bid timber sale will be awarded to the responsible bidder offering the highest sealed bid price. Bids must be at or above the following advertised price for each species:

<u>PRODUCTS &amp; SPECIES</u>	<u>ESTIMATED UNITS*</u>	<u>ADVERTISED PRICE</u>
Sawtimber		
Paper Birch	0.30 MBF	\$ 66.00 / MBF
Red Maple	7.30 MBF	\$ 190.00 / MBF
Sugar Maple	6.80 MBF	\$ 324.00 / MBF
Pulpwood		
Balsam Fir	246.00 Cords	\$ 22.75 / Cord
Balsam Poplar	93.00 Cords	\$ 28.00 / Cord
Black Spruce	27.00 Cords	\$ 20.80 / Cord
Hemlock	21.00 Cords	\$ 12.00 / Cord
Mixed Aspen	479.00 Cords	\$ 28.00 / Cord
Mixed Hardwood	1,122.00 Cords	\$ 28.60 / Cord
N. White Cedar	1,789.00 Cords	\$ 26.65 / Cord
Tamarack	116.00 Cords	\$ 14.25 / Cord
White Pine	6.00 Cords	\$ 32.60 / Cord

\* The total volume is statistically estimated within plus (+) or minus (-) 7.87 percent. The estimated units are final and not subject to adjustment. Prospective bidders are urged to examine this timber and to make their own estimates of quantity and quality.

### **BOND AND PAYMENT SCHEDULE:**

1. A bond in the amount of \$5,383.00 to insure faithful performance of the conditions of the contract will be deposited by the successful bidder within 21 days of the sale award.
2. Cutting in any sale or unit without the required advance payment would be considered a trespass.
3. Total payment must be paid in advance or according to the following schedule:
  - (a) Ten percent (10%) of the sale value must be paid within 21 days of the sale award.
  - (b) The 10% down payment will be credited towards the first unit cut.
4. If no cutting takes place, the 10% down payment will not be refunded.
5. Operations on the contract issued will terminate on 06/30/2019.

**Description of Timber by Payment Unit (PU)**

PU	MARKET GROUP	PRODUCT	QUANTITY	UNIT	ACRES	ADVERTISE PRICE
1	Sugar Maple Balsam Fir Black Spruce Mixed Aspen <i>B. T. Aspen</i> <i>Quaking Aspen</i> Mixed Hardwood <i>Beech</i> <i>Black Ash</i> <i>Black Cherry</i> <i>Ironwood</i> <i>Paper Birch</i> <i>Red Maple</i> <i>Sugar Maple</i> <i>White Ash</i> N. White Cedar Tamarack White Pine	Sawtimber	3.0	MBF	26.4	\$19,061.75
		Pulpwood	69.0	Cords		
			4.0	Cords		
			408.0	Cords		
			240.0	Cords		
			168.0	Cords		
			113.0	Cords		
			7.0	Cords		
			10.0	Cords		
			2.0	Cords		
			1.0	Cords		
			7.0	Cords		
			61.0	Cords		
			18.0	Cords		
			7.0	Cords		
			53.0	Cords		
			19.0	Cords		
			3.0	Cords		
		2	Red Maple Balsam Fir Balsam Poplar Black Spruce Hemlock Mixed Aspen <i>Quaking Aspen</i> Mixed Hardwood <i>Black Ash</i> <i>Green Ash</i> <i>Paper Birch</i> <i>Red Maple</i> <i>Yellow Birch</i> N. White Cedar	Sawtimber		
Pulpwood	47.0			Cords		
	57.0			Cords		
	18.0			Cords		
	1.0			Cords		
	10.0			Cords		
	10.0			Cords		
	134.0			Cords		
	14.0			Cords		
	48.0			Cords		
	29.0			Cords		
	23.0			Cords		
	20.0			Cords		
	418.0			Cords		
3	Balsam Fir Balsam Poplar Mixed Aspen <i>B. T. Aspen</i> <i>Quaking Aspen</i> Mixed Hardwood <i>Basswood</i> <i>Black Ash</i> <i>Paper Birch</i> <i>Red Maple</i> <i>Sugar Maple</i> N. White Cedar	Pulpwood	20.0	Cords	6.7	\$4,508.80
			24.0	Cords		
			49.0	Cords		
			47.0	Cords		
			2.0	Cords		
			33.0	Cords		
			1.0	Cords		
			5.0	Cords		
			4.0	Cords		
			10.0	Cords		
			13.0	Cords		
			40.0	Cords		
		4	Balsam Fir Mixed Hardwood <i>Black Ash</i> <i>Paper Birch</i> <i>Red Maple</i> <i>Yellow Birch</i>	Pulpwood		
	53.0			Cords		
	31.0			Cords		
	2.0			Cords		
	6.0			Cords		
	14.0			Cords		
5	Balsam Fir Balsam Poplar Hemlock Mixed Hardwood <i>Black Ash</i> <i>Green Ash</i>	Pulpwood	15.0	Cords	17.4	\$10,587.65
			3.0	Cords		
			1.0	Cords		
			176.0	Cords		
			109.0	Cords		
			6.0	Cords		



Description of Timber by Payment Unit (PU), con't

PU	MARKET GROUP	PRODUCT	QUANTITY	UNIT	ACRES	ADVERTISE PRICE
5 con't	<i>Paper Birch</i>	<i>Pulpwood</i>	5.0	<i>Cords</i>		
	<i>Red Maple</i>		41.0	<i>Cords</i>		
	<i>Yellow Birch</i>		15.0	<i>Cords</i>		
	N. White Cedar		192.0	Cords		
6	Balsam Fir	Pulpwood	34.0	Cords	24.7	\$18,129.95
	Balsam Poplar		3.0	Cords		
	Black Spruce		3.0	Cords		
	Hemlock		7.0	Cords		
	Mixed Hardwood		219.0	Cords		
	<i>Basswood</i>		2.0	<i>Cords</i>		
	<i>Black Ash</i>		145.0	<i>Cords</i>		
	<i>Green Ash</i>		3.0	<i>Cords</i>		
	<i>Paper Birch</i>		9.0	<i>Cords</i>		
	<i>Red Maple</i>		38.0	<i>Cords</i>		
	<i>Yellow Birch</i>		22.0	<i>Cords</i>		
	N. White Cedar		406.0	Cords		
	Tamarack		3.0	Cords		
	7		Paper Birch	Sawtimber		
Red Maple		0.3	MBF			
Sugar Maple		3.8	MBF			
Balsam Fir		Pulpwood	1.0	Cords		
Mixed Aspen			1.0	Cords		
<i>Quaking Aspen</i>			1.0	<i>Cords</i>		
Mixed Hardwood			37.0	Cords		
<i>Basswood</i>			2.0	<i>Cords</i>		
<i>Paper Birch</i>			1.0	<i>Cords</i>		
<i>Red Maple</i>			7.0	<i>Cords</i>		
<i>Sugar Maple</i>			26.0	<i>Cords</i>		
<i>Yellow Birch</i>			1.0	<i>Cords</i>		
N. White Cedar			2.0	Cords		
8			Red Maple	Sawtimber	0.5	MBF
	Balsam Fir	Pulpwood	18.0	Cords		
	Balsam Poplar		6.0	Cords		
	Black Spruce		2.0	Cords		
	Hemlock		2.0	Cords		
	Mixed Aspen		3.0	Cords		
	<i>Quaking Aspen</i>		3.0	<i>Cords</i>		
	Mixed Hardwood		77.0	Cords		
	<i>Black Ash</i>		6.0	<i>Cords</i>		
	<i>Green Ash</i>		18.0	<i>Cords</i>		
	<i>Paper Birch</i>		13.0	<i>Cords</i>		
	<i>Red Maple</i>		27.0	<i>Cords</i>		
	<i>Yellow Birch</i>		13.0	<i>Cords</i>		
	N. White Cedar		124.0	Cords		
Tamarack	77.0	Cords				
9	Red Maple	Sawtimber	6.0	MBF	8.0	\$6,582.75
	Balsam Fir	Pulpwood	14.0	Cords		
	Mixed Aspen		6.0	Cords		
	<i>Quaking Aspen</i>		6.0	<i>Cords</i>		
	Mixed Hardwood		109.0	Cords		
	<i>American Elm</i>		3.0	<i>Cords</i>		
	<i>Beech</i>		3.0	<i>Cords</i>		
	<i>Black Ash</i>		21.0	<i>Cords</i>		
	<i>Green Ash</i>		20.0	<i>Cords</i>		
	<i>Red Maple</i>		42.0	<i>Cords</i>		
	<i>Sugar Maple</i>		6.0	<i>Cords</i>		

**Description of Timber by Payment Unit (PU), con't**

PU	MARKET GROUP	PRODUCT	QUANTITY	UNIT	ACRES	ADVERTISE PRICE
9 con't	<i>Yellow Birch</i>	<i>Pulpwood</i>	14.0	<i>Cords</i>		
	N. White Cedar		69.0	Cords		
10	Balsam Fir	Pulpwood	26.0	Cords	24.0	\$18,923.40
	Hemlock		10.0	Cords		
	Mixed Aspen		2.0	Cords		
	<i>Quaking Aspen</i>		2.0	<i>Cords</i>		
	Mixed Hardwood		171.0	Cords		
	<i>Black Ash</i>		72.0	<i>Cords</i>		
	<i>Green Ash</i>		8.0	<i>Cords</i>		
	<i>Paper Birch</i>		42.0	<i>Cords</i>		
	<i>Red Maple</i>		29.0	<i>Cords</i>		
	<i>Yellow Birch</i>		20.0	<i>Cords</i>		
	N. White Cedar		485.0	Cords		
	Tamarack		17.0	Cords		
	White Pine		3.0	Cords		
	TOTAL:			14.4		
TOTAL:			3,899.0	Cords		

## Sale Specific Conditions & Requirements

**Sale Name: Powerline Divide ELB**

**Sale Number: 33-033-16 Seq#: 1**

### 1 - Sale Area

#### 1.2 - Boundaries

##### 1.2.1 - Painted boundaries (1/14)

The sale boundary and Payment Unit boundaries are marked and identified by blue, red and/or yellow paint. Exterior sale boundary lines against private property are marked with blue paint. Exterior sale boundary lines against state are marked with red paint. Interior Payment Unit boundaries are marked with yellow paint. Yellow painted trees designating an interior Payment Unit boundary are only to be cut when all surrounding Payment Units have been paid for. Interior retention patches are marked with red paint; no harvesting activities may occur within these areas.

### 2 - Timber Specifications

#### 2.1 - Included Timber

##### 2.1.1 - Clearcut unit(s) with unmerchantable trees (6/14)

Within Payment Unit(s) 1, 3, and 8, cut all trees that are three (3) inches or more at DBH.

Within Payment Unit(s) 2, 4, 5, 6, 9, and 10, cut all trees that are four (4) inches or more at DBH. Except, within Payment Unit 4 do not cut any cedar, and within Payment Unit 9 do not cut hemlock and white pine.

Within Payment Units 8 and 10 there is some old green paint on some of the trees, disregard it. Follow the cutting specifications for each Payment Unit.

##### 2.1.3 - Cut tree marked unit(s) (12/08)

Within Payment Unit(s) 7, all trees are designated for cutting when marked with orange paint above and below stump height, regardless of merchantability.

### 3 - Payments

#### 3.3 - Pre-measured Sales

##### 3.3.4 - Dividing payment units (7/14)

Payment Unit(s) \$18,000 in value or greater may be divided at the request of the Purchaser and upon approval of the Unit Manager. Dividing Payment Units is a contract modification which requires a Timber Sale Contract Supplement. There will be only one division per Payment Unit.

### 4 - Transportation

#### 4.1 - Construction

##### 4.1.8 - Road work (1) (8/07)

The following road work is required: prior to any hauling on Sauerkraut Lane from Payment Unit 1, a minimum of 160 yards of gravel must be hauled and spread on the road. The gravel is available from a state pit, which is about 4 miles from the sale.

#### 4.2 - Maintenance

##### 4.2.1 - Hauling restriction (12/08)

Hauling may be restricted on forest roads by the Unit Manager or his/her representative. The restriction may occur during spring breakup or during other wet weather conditions.

##### 4.2.4 - Grading (12/14)

For completion of the sale, state forest roads must be graded. In general, this will require a road grader or bull dozer to shape up the roads after forest products have been hauled off site. This includes cleaning of drainage areas, grading, crowning and filling with gravel, if necessary. The grading equipment to be used must be approved by the Unit Manager or his/her representative.

#### 4.4 - Access

##### 4.4.1 - Private property access (3/11)

Permission for access across private land into Payment Units 2 - 7 is the responsibility of the Purchaser. A copy of the written permission from the private landowner must be given to the Unit Manager within 21 days of the bid opening and prior to the beginning of operations.

### 5 - Operations

#### 5.2 - Conduct of Operations

##### 5.2.3 - Operating Restrictions

###### 5.2.3.1 - Operating restrictions (9/11)

Within Payment Unit(s) 2, 4, 5, 6, 8, 9, and 10 cutting and skidding are limited to the period of December 1st to March 31st, unless there is an extended dry or frozen period and the sale administrator approves of harvesting during that time period. This restriction is because of low wet ground throughout the Payment Units.

###### 5.2.3.3 - Bark slippage restriction (3/09)

Within Payment Unit(s) 7, cutting and skidding are not permitted during the period of April 15 to July 15. This restriction is because of bark slippage.

##### 5.2.22 - Operating Caution

###### 5.2.22.1 - Operating caution (6/11)

It is recommended, but not required, that within Payment Unit(s) 3, cutting and skidding occur during dry summer or frozen winter conditions. The reason for the recommendation is because there is some low ground within the unit.

#### 5.4 - Soil Protection

##### 5.4.1 - Rutting restriction, general (7/16)

Operations are to cease immediately if equipment and weather conditions result in rutting of roads and/or skid trails which is 12 inches or greater in depth and 50 feet in length. The Unit Manager or his/her representative may restrict hauling and/or skidding if ruts exceed the specified depth. With the Unit Manager or his/her representative's approval, the Purchaser may return to the area when the risk of rutting has decreased.

### 6 - Safety and Fire Prevention

#### 6.2 - Signing

##### 6.2.1 - Road posting (9/09)

The Purchaser is responsible for posting and maintaining caution signs on Schuster Lane and the Hayward Lake Road prior to beginning operations. The road must be posted at appropriate distances from the sale area to warn of logging activity and truck traffic. Signs must be removed when harvest operations are suspended or completed. The Purchaser will provide these signs.

### 7 - Other Conditions

#### 7.2 - Extensions

##### 7.2.5 - Weather related extension (1/13)

If weather conditions during the operating period of this contract prevent harvesting, this sale may qualify for a weather related extension. If approved, the normal extension fee would be waived. To qualify, there must be a documented attempt each year to harvest in the difficult portion of the sale.

#### 7.5 - Loss

##### 7.5.1 - Deteriorating timber (7/09)

The sale area has received damage from the Eastern Larch Beetle. It has caused some tamarack mortality along the eastern edge of Payment Unit 8. The Purchaser should harvest the wood as soon as possible. The Department of Natural Resources is held free of responsibility of any further damage or deterioration due to delay in harvesting.





# TIMBER SALE MAP

This information provided by authority of Part 525, 1994 PA 451, as amended.

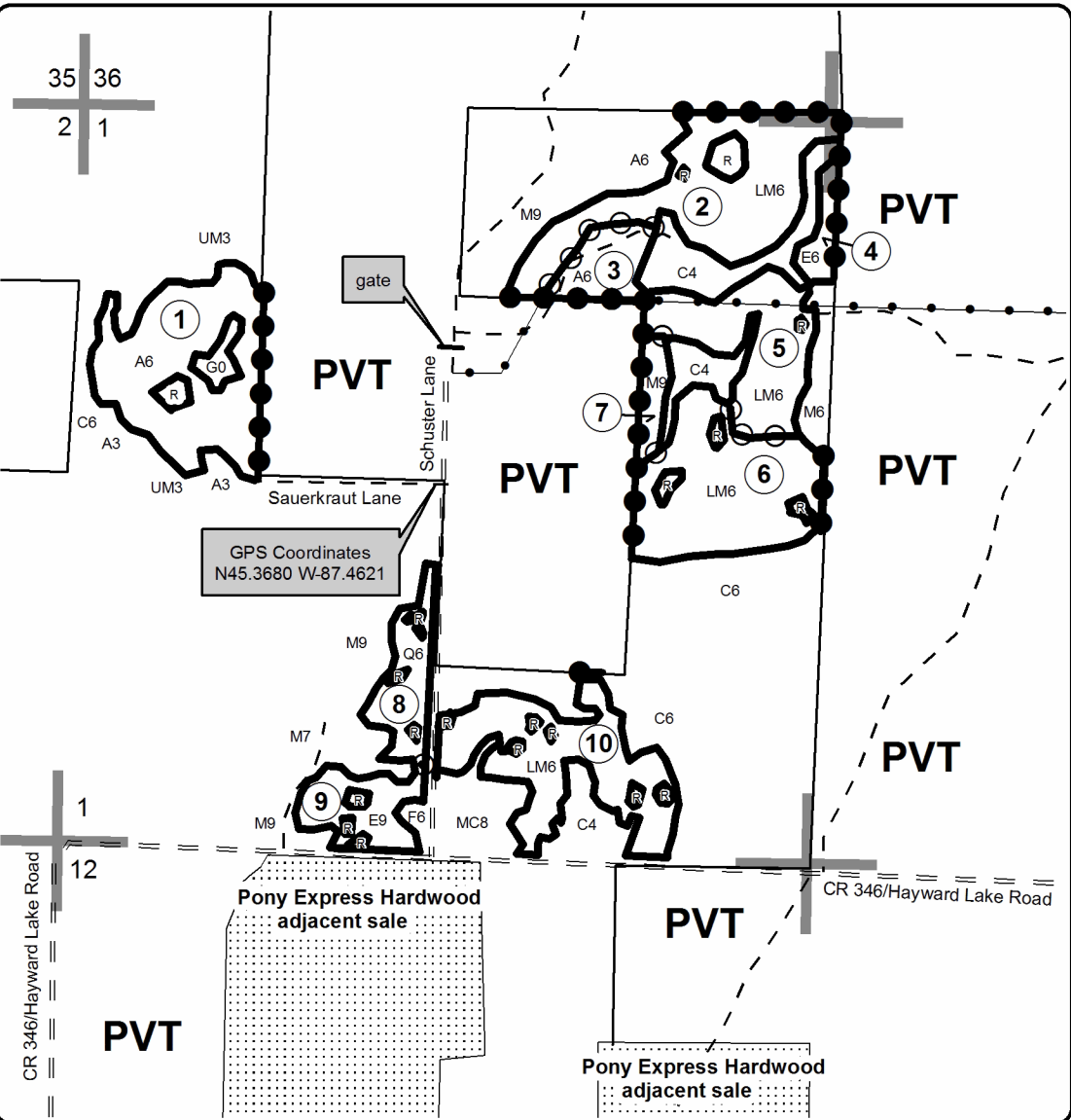
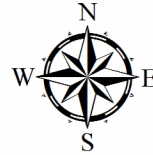
Sale Number	Year
33-033	16

Forest Management Unit	County	Mapped By	Date	Page	of
Escanaba Management Unit	Menominee County	Beaudo	8/19/2016	1	1
Township	Range	Section(s) and Subdivision(s)	Scale		
34N	26W	Sec 1 - NENE, NESE, NESW, NWNE, NWNW, SENE, SESE, SESW, SWNW, SWSE; Sec 12 - NENW, NWNE. T35NR25W Sec 31 - SWSW.	1:15,840		

Cover Type				Density			
A = Aspen	H = Hemlock	N = Marsh	U = Upland Brush	0 = Non Stocked	5 = Pole Timber Medium		
B = Paper Birch	J = Jack Pine	O = Oak	UM = Upland Mixed	1 = Seedling Sapling Poor	6 = Pole Timber Well		
C = Cedar	L = Lowland Brush	P = Lowland Poplar	V = Bog or Marsh	2 = Seedling Sapling Medium	7 = Saw Timber Poor		
D = Tread Bog	LM = Lowland Mixed	Q = Mixed Swamp Conifer	W = White Pine	3 = Seedling Sapling Well	8 = Saw Timber Medium		
E = Swamp Hdwoods	M = Mpl, Bch, Brch	R = Red Pine	X = Non Stocked	4 = Pole Timber Poor	9 = Saw Timber Well		
F = Spruce Fir	MC = Mixed Conifer	S = Black Spruce	Z = Water				
G = Grass	MD = Mixed Deciduous	T = Tamarack					

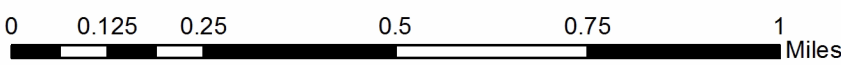
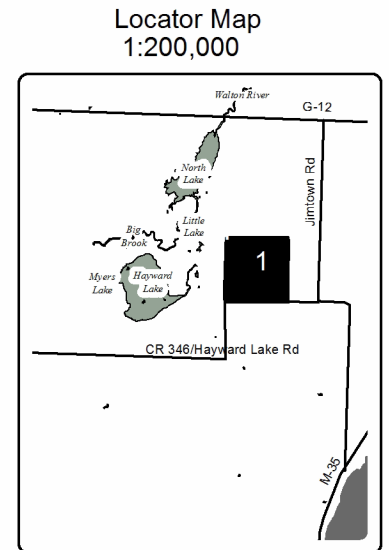
PU	Acres	PU	Acres
1	26.4	6	24.7
2	26.7	7	3.3
3	6.7	8	8.4
4	3.7	9	8.0
5	17.4	10	24.0

**Powerline Divide ELB**  
**Compartment 61**  
**149.3 Acres**



**Legend**

- Against State (Red)
- Payment Unit (Yellow)
- Private Line (Blue)
- Section Corners
- 1 Section Number
- State Land Boundary
- == County Gravel Road
- - Two Track Road
- ① Payment Unit
- R Retention Patch
- PVT Private Property
- ▨ Adjacent Timber Sale
- Powerline



# TIMBER SALE INFORMATION

## Checkerboard Hardwood SBW (33-034-16)

Menominee County (Advertised Price \$88,644.75)

SALE NOTE: The spruce budworm is present, there is some defoliation at this time, but no mortality. The best access into this sale is through private property off of Town Road. Three different landowners will need to be crossed, one of them is local and will provide guidance for access into the sale. The landowners will require that the Purchaser level the access road prior to starting harvesting and after all of the wood has been hauled. There is a culvert west of unit 2 on private land, that the landowner will require more fill spread over the top to prevent it from getting crushed.

Access may be through private land.

A timber sale contract for this lump sum, sealed bid timber sale will be awarded to the responsible bidder offering the highest sealed bid price. Bids must be at or above the following advertised price for each species:

<u>PRODUCTS &amp; SPECIES</u>	<u>ESTIMATED UNITS*</u>		<u>ADVERTISED PRICE</u>
Sawtimber			
Green Ash	13.90	MBF	\$ 90.00 / MBF
Paper Birch	2.40	MBF	\$ 83.00 / MBF
Red Maple	57.00	MBF	\$ 237.00 / MBF
White Pine	3.50	MBF	\$ 75.00 / MBF
Pulpwood			
Balsam Fir	459.00	Cords	\$ 28.45 / Cord
Balsam Poplar	70.00	Cords	\$ 35.00 / Cord
Mixed Hardwood	1,418.00	Cords	\$ 35.75 / Cord
N. White Cedar	5.00	Cords	\$ 33.30 / Cord
Quaking Aspen	77.00	Cords	\$ 35.00 / Cord
White Pine	10.00	Cords	\$ 40.75 / Cord
White Spruce	152.00	Cords	\$ 26.00 / Cord

\* The total volume is statistically estimated within plus (+) or minus (-) 7.34 percent. The estimated units are final and not subject to adjustment. Prospective bidders are urged to examine this timber and to make their own estimates of quantity and quality.

### **BOND AND PAYMENT SCHEDULE:**

1. A bond in the amount of \$4,432.00 to insure faithful performance of the conditions of the contract will be deposited by the successful bidder within 21 days of the sale award.
2. Cutting in any sale or unit without the required advance payment would be considered a trespass.
3. Total payment must be paid in advance or according to the following schedule:
  - (a) Ten percent (10%) of the sale value must be paid within 21 days of the sale award.
  - (b) The 10% down payment will be credited towards the first unit cut.
4. If no cutting takes place, the 10% down payment will not be refunded.
5. Operations on the contract issued will terminate on 09/30/2019.

**Description of Timber by Payment Unit (PU)**

PU	MARKET GROUP	PRODUCT	QUANTITY	UNIT	ACRES	ADVERTISE PRICE
1	Red Maple	Sawtimber	16.4	MBF	25.7	\$20,221.10
	White Pine		3.5	MBF		
	Balsam Fir	Pulpwood	9.0	Cords		
	Mixed Hardwood		415.0	Cords		
	<i>Black Ash</i>		19.0	<i>Cords</i>		
	<i>Green Ash</i>		120.0	<i>Cords</i>		
	<i>Paper Birch</i>		34.0	<i>Cords</i>		
	<i>Red Maple</i>		229.0	<i>Cords</i>		
	<i>Yellow Birch</i>		13.0	<i>Cords</i>		
	White Pine		10.0	Cords		
	White Spruce		22.0	Cords		
2	Green Ash	Sawtimber	10.8	MBF	31.2	\$29,734.35
	Paper Birch		2.4	MBF		
	Red Maple		32.7	MBF		
	Balsam Fir	Pulpwood	55.0	Cords		
	Balsam Poplar		4.0	Cords		
	Mixed Hardwood		494.0	Cords		
	<i>Basswood</i>		3.0	<i>Cords</i>		
	<i>Black Ash</i>		15.0	<i>Cords</i>		
	<i>Green Ash</i>		119.0	<i>Cords</i>		
	<i>Paper Birch</i>		56.0	<i>Cords</i>		
	<i>Red Maple</i>		301.0	<i>Cords</i>		
	Quaking Aspen		2.0	Cords		
	White Spruce		53.0	Cords		
	3	Red Maple	Sawtimber	7.4		
Balsam Fir		Pulpwood	25.0	Cords		
Balsam Poplar			6.0	Cords		
Mixed Hardwood			257.0	Cords		
<i>Green Ash</i>			17.0	<i>Cords</i>		
<i>Paper Birch</i>			37.0	<i>Cords</i>		
<i>Red Maple</i>			174.0	<i>Cords</i>		
<i>Yellow Birch</i>			29.0	<i>Cords</i>		
White Spruce			8.0	Cords		
4		Red Maple	Sawtimber	0.5	MBF	8.1
	Balsam Fir	Pulpwood	14.0	Cords		
	Balsam Poplar		5.0	Cords		
	Mixed Hardwood		155.0	Cords		
	<i>Black Ash</i>		57.0	<i>Cords</i>		
	<i>Green Ash</i>		88.0	<i>Cords</i>		
	<i>Red Maple</i>		10.0	<i>Cords</i>		
	Quaking Aspen		5.0	Cords		
	White Spruce		7.0	Cords		
5	Green Ash	Sawtimber	3.1	MBF	4.7	\$3,788.50
	Balsam Fir	Pulpwood	45.0	Cords		
	Balsam Poplar		12.0	Cords		
	Mixed Hardwood		23.0	Cords		
	<i>Green Ash</i>		23.0	<i>Cords</i>		
	Quaking Aspen		23.0	Cords		
	White Spruce		7.0	Cords		
6	Balsam Fir	Pulpwood	311.0	Cords	30.0	\$16,239.95
	Balsam Poplar		43.0	Cords		
	Mixed Hardwood		74.0	Cords		
	<i>Green Ash</i>		62.0	<i>Cords</i>		
	<i>Paper Birch</i>		6.0	<i>Cords</i>		
	<i>Red Maple</i>		6.0	<i>Cords</i>		
	N. White Cedar		5.0	Cords		



**Description of Timber by Payment Unit (PU), con't**

PU	MARKET GROUP	PRODUCT	QUANTITY	UNIT	ACRES	ADVERTISE PRICE
6 con't	Quaking Aspen	Pulpwood	47.0	Cords		
	White Spruce		55.0	Cords		
TOTAL:			76.8	MBF		
TOTAL:			2,191.0	Cords		

## Sale Specific Conditions & Requirements

**Sale Name: Checkerboard Hardwood SBW**

**Sale Number: 33-034-16 Seq#: 1**

### 1 - Sale Area

#### 1.2 - Boundaries

##### 1.2.1 - Painted boundaries (1/14)

The sale boundary and Payment Unit boundaries are marked and identified by blue, red and yellow paint. Exterior sale boundary lines against private property are marked with blue paint. Exterior sale boundary lines against state are marked with red paint. Interior Payment Unit boundaries are marked with yellow paint. Yellow painted trees designating an interior Payment Unit boundary are only to be cut when all surrounding Payment Units have been paid for. Interior retention patches are marked with red paint; no harvesting activities may occur within these retention areas.

### 2 - Timber Specifications

#### 2.1 - Included Timber

##### 2.1.1 - Clearcut unit(s) with unmerchantable trees (6/14)

Within Payment Unit(s) 1, 2, 4, 5, and 6, cut all trees that are three (3) inches or more at DBH; with the following exceptions:

Within Payment Unit(s) 1 and 2, do not cut cedar and hemlock. Also, do not cut white pine and spruce marked with green paint.

Within Payment Unit(s) 4, do not cut cedar.

##### 2.1.4 - Species designation unit(s) (12/08)

Within Payment Unit(s) 3, all hardwood trees three (3) inches or more at DBH and all balsam fir and spruce trees four (4) inches or more at DBH are designated for cutting.

### 3 - Payments

#### 3.3 - Pre-measured Sales

##### 3.3.4 - Dividing payment units (7/14)

Payment Unit(s) \$18,000 in value or greater may be divided at the request of the Purchaser and upon approval of the Unit Manager. Dividing Payment Units is a contract modification which requires a Timber Sale Contract Supplement. There will be only one division per Payment Unit.

### 4 - Transportation

#### 4.2 - Maintenance

##### 4.2.1 - Hauling restriction (12/08)

Hauling may be restricted on forest roads by the Unit Manager or his/her representative. The restriction may occur during spring breakup or during other wet weather conditions.

##### 4.2.4 - Grading (12/14)

For completion of the sale, state forest roads must be graded. In general, this will require a road grader or bull dozer to shape up the roads after forest products have been hauled off site. This includes cleaning of drainage areas, grading, crowning and filling with gravel, if necessary. The grading equipment to be used must be approved by the Unit Manager or his/her representative.

#### 4.4 - Access

##### 4.4.1 - Private property access (3/11)

Permission for access across private land is the responsibility of the Purchaser.

### 5 - Operations

#### 5.2 - Conduct of Operations

## 5.2.3 - Operating Restrictions

### 5.2.3.1 - Operating restrictions (9/11)

Within Payment Unit(s) 4 and 5, cutting and skidding are limited to the period of December 1st to March 31st, unless there is an extended dry or frozen period and the sale administrator approves of harvesting during that time period. This restriction is because of low wet ground throughout the Payment Units.

### 5.2.3.11 - Coppice regeneration protection (4/10)

To promote aspen regeneration, harvesting in Payment Unit 6 is limited to October 1st through April 15th.

There is some low ground within the unit, so not all of it will be dry enough to harvest in the spring or during a wet fall.

## 5.2.22 - Operating Caution

### 5.2.22.1 - Operating caution (6/11)

It is recommended, but not required, that within Payment Unit(s) 1, 2, 3, cutting and skidding occur during dry summer or frozen winter conditions. The reason for the recommendation is because of areas of low wet ground within each of the Payment Units. The majority of the units are on high dry ground, but there are areas of low ground interspersed.

## 5.4 - Soil Protection

### 5.4.1 - Rutting restriction, general (7/16)

Operations are to cease immediately if equipment and weather conditions result in rutting of roads and/or skid trails which is 12 inches or greater in depth and 50 feet in length. The Unit Manager or his/her representative may restrict hauling and/or skidding if ruts exceed the specified depth. With the Unit Manager or his/her representative's approval, the Purchaser may return to the area when the risk of rutting has decreased.

## 7 - Other Conditions

### 7.5 - Loss

#### 7.5.1 - Deteriorating timber (7/09)

The sale area has received damage from the spruce budworm. The spruce budworm is present and has caused some defoliation, but no mortality was present at the time of sale preparation. The Purchaser should harvest the wood as soon as possible. The Department of Natural Resources is held free of responsibility of any further damage or deterioration due to delay in harvesting.



# TIMBER SALE MAP

This information provided by authority of Part 525, 1994 PA 451, as amended.

Forest Management Unit		County	Mapped By		Date	Page of	
Escanaba Management Unit		Menominee County	Beardo		8/24/2016	1	1
Township	Range	Section(s) and Subdivision(s)			Scale		
35N	25W	Sec 9 - NENE, NESE, NESW, NWSE, SESE, SWNE; Sec 10 - NESW, NWSW & SWSW.			1:15,840		
Cover Type				Density			
A = Aspen	H = Hemlock	N = Marsh	U = Upland Brush	0 = Non Stocked	5 = Pole Timber Medium		
B = Paper Birch	J = Jack Pine	O = Oak	UM = Upland Mixed	1 = Seedling Sapling Poor	6 = Pole Timber Well		
C = Cedar	L = Lowland Brush	P = Lowland Poplar	V = Bog or Marsh	2 = Seedling Sapling Medium	7 = Saw Timber Poor		
D = Treed Bog	LM = Lowland Mixed	Q = Mixed Swamp Conifer	W = White Pine	3 = Seedling Sapling Well	8 = Saw Timber Medium		
E = Swamp Hdwoods	M = Mpl, Bch, Brch	R = Red Pine	X = Non Stocked	4 = Pole Timber Poor	9 = Saw Timber Well		
F = Spruce Fir	MC = Mixed Conifer	S = Black Spruce	Z = Water				
G = Grass	MD = Mixed Deciduous	T = Tamarack					

## Checkerboard Hardwood SBW

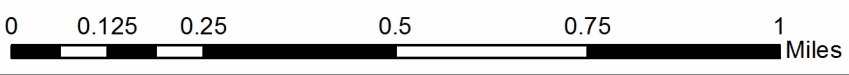
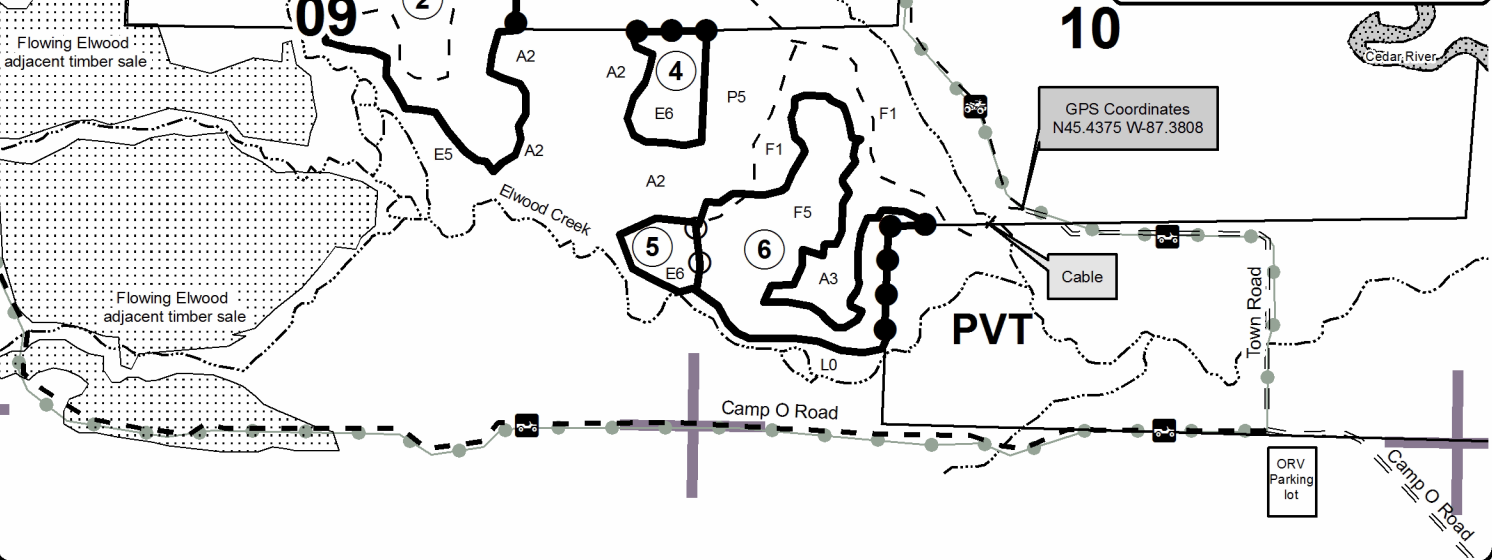
### Compartment 51

#### 113.0 Acres

PU	Acres	PU	Acres
1	25.7	4	8.1
2	31.2	5	4.7
3	13.3	6	30.0

### Legend

- Against State (Red)
- Payment Unit (Yellow)
- Private Line (Blue)
- Section Corners
- 9** Section Number
- County Gravel Road
- State Forest Road
- Two Track Road
- ORV Trail
- ORV Route
- Stream
- State Land Boundary
- Payment Unit
- Retention Patch
- Private Property
- State Timber Sale
- Camp



# TIMBER SALE INFORMATION

## Blue Chair SBW (33-035-16)

Menominee County (Advertised Price \$85,852.20)

SALE NOTE: The spruce budworm is present, but only some minor defoliation has occurred at this time. The gate on the access road into Payment Units 1 and 2 is locked, the DNR will provide a key for it.

A timber sale contract for this lump sum, sealed bid timber sale will be awarded to the responsible bidder offering the highest sealed bid price. Bids must be at or above the following advertised price for each species:

<u>PRODUCTS &amp; SPECIES</u>	<u>ESTIMATED UNITS*</u>	<u>ADVERTISED PRICE</u>
Sawtimber		
Paper Birch	0.50 MBF	\$ 83.00 / MBF
Red Maple	48.50 MBF	\$ 237.00 / MBF
White Pine	98.60 MBF	\$ 75.00 / MBF
Pulpwood		
Balsam Fir	113.00 Cords	\$ 28.45 / Cord
Mixed Aspen	60.00 Cords	\$ 35.00 / Cord
Mixed Hardwood	752.00 Cords	\$ 35.75 / Cord
Mixed Spruce	95.00 Cords	\$ 26.00 / Cord
N. White Cedar	164.00 Cords	\$ 33.30 / Cord
Red Pine	148.00 Cords	\$ 61.80 / Cord
White Pine	433.00 Cords	\$ 40.75 / Cord

\* The total volume is statistically estimated within plus (+) or minus (-) 11.24 percent. The estimated units are final and not subject to adjustment. Prospective bidders are urged to examine this timber and to make their own estimates of quantity and quality.

### **BOND AND PAYMENT SCHEDULE:**

1. A bond in the amount of \$4,293.00 to insure faithful performance of the conditions of the contract will be deposited by the successful bidder within 21 days of the sale award.
2. Cutting in any sale or unit without the required advance payment would be considered a trespass.
3. Total payment must be paid in advance or according to the following schedule:
  - (a) Ten percent (10%) of the sale value must be paid within 21 days of the sale award.
  - (b) The 10% down payment will be credited towards the first unit cut.
4. If no cutting takes place, the 10% down payment will not be refunded.
5. Operations on the contract issued will terminate on 09/30/2019.

**Description of Timber by Payment Unit (PU)**

PU	MARKET GROUP	PRODUCT	QUANTITY	UNIT	ACRES	ADVERTISE PRICE
1	Red Maple	Sawtimber	16.1	MBF	33.8	\$26,867.00
	White Pine		51.6	MBF		
	Balsam Fir	Pulpwood	30.0	Cords		
	Mixed Aspen		32.0	Cords		
	<i>B. T. Aspen</i>		22.0	<i>Cords</i>		
	<i>Quaking Aspen</i>		10.0	<i>Cords</i>		
	Mixed Hardwood		237.0	Cords		
	<i>Paper Birch</i>		2.0	<i>Cords</i>		
	<i>Red Maple</i>		235.0	<i>Cords</i>		
	Mixed Spruce		20.0	Cords		
	<i>Black Spruce</i>		4.0	<i>Cords</i>		
	<i>White Spruce</i>		16.0	<i>Cords</i>		
	Red Pine		36.0	Cords		
	White Pine		147.0	Cords		
	2	Red Maple	Sawtimber	20.1		
White Pine			26.1	MBF		
Balsam Fir		Pulpwood	24.0	Cords		
Mixed Hardwood			206.0	Cords		
<i>Beech</i>			2.0	<i>Cords</i>		
<i>Black Ash</i>			1.0	<i>Cords</i>		
<i>Green Ash</i>			11.0	<i>Cords</i>		
<i>Red Maple</i>			192.0	<i>Cords</i>		
Mixed Spruce			18.0	Cords		
<i>Black Spruce</i>			12.0	<i>Cords</i>		
<i>White Spruce</i>			6.0	<i>Cords</i>		
Red Pine			42.0	Cords		
White Pine			155.0	Cords		
3	Red Maple	Sawtimber	9.2	MBF	17.5	\$18,517.25
	White Pine		8.4	MBF		
	Balsam Fir	Pulpwood	10.0	Cords		
	Mixed Aspen		13.0	Cords		
	<i>Quaking Aspen</i>		13.0	<i>Cords</i>		
	Mixed Hardwood		184.0	Cords		
	<i>Paper Birch</i>		5.0	<i>Cords</i>		
	<i>Red Maple</i>		179.0	<i>Cords</i>		
	Mixed Spruce		17.0	Cords		
	<i>Black Spruce</i>		4.0	<i>Cords</i>		
	<i>White Spruce</i>		13.0	<i>Cords</i>		
	Red Pine		62.0	Cords		
	White Pine		101.0	Cords		
4	Paper Birch	Sawtimber	0.5	MBF	19.2	\$16,319.60
	Red Maple		3.1	MBF		
	White Pine		12.5	MBF		
	Balsam Fir	Pulpwood	49.0	Cords		
	Mixed Aspen		15.0	Cords		
	<i>B. T. Aspen</i>		15.0	<i>Cords</i>		
	Mixed Hardwood		125.0	Cords		
	<i>Balsam Poplar</i>		5.0	<i>Cords</i>		
	<i>Black Ash</i>		26.0	<i>Cords</i>		
	<i>Paper Birch</i>		39.0	<i>Cords</i>		
	<i>Red Maple</i>		52.0	<i>Cords</i>		
	<i>Yellow Birch</i>		3.0	<i>Cords</i>		
	Mixed Spruce		40.0	Cords		
	<i>Black Spruce</i>		40.0	<i>Cords</i>		
	N. White Cedar		164.0	Cords		
	Red Pine		8.0	Cords		

**Description of Timber by Payment Unit (PU), con't**

PU	MARKET GROUP	PRODUCT	QUANTITY	UNIT	ACRES	ADVERTISE PRICE
4 con't	White Pine	Pulpwood	30.0	Cords		
TOTAL:			147.6	MBF		
TOTAL:			1,765.0	Cords		

## Sale Specific Conditions & Requirements

**Sale Name: Blue Chair SBW**

**Sale Number: 33-035-16 Seq#: 1**

### 1 - Sale Area

#### 1.2 - Boundaries

##### 1.2.1 - Painted boundaries (1/14)

The sale boundary and Payment Unit boundaries are marked and identified by blue, red and/or yellow paint. Exterior sale boundary lines against private property are marked with blue paint. Exterior sale boundary lines against state are marked with red paint. The red painted trees along County Road 551, within Payment Units 1 and 3, are included timber and should be cut when the Payment Units have been paid for. Interior Payment Unit boundaries are marked with yellow paint. Yellow painted trees designating an interior Payment Unit boundary are only to be cut when all surrounding Payment Units have been paid for. The interior retention area within Payment Unit 4 is marked with red paint; no harvesting activities may occur within this retention area.

### 2 - Timber Specifications

#### 2.1 - Included Timber

##### 2.1.1 - Clearcut unit(s) with unmerchantable trees (6/14)

Within Payment Unit(s) 4, cut all trees that are three (3) inches or more at DBH; except hemlock. Also, do not cut trees marked with green paint.

##### 2.1.4 - Species designation unit(s) (12/08)

Within Payment Unit(s) 1, 2, and 3, all trees greater than six (6) inches at DBH are designated for cutting; except cedar, hemlock, and those pine and spruce marked with green paint. Also, cut all spruce and balsam fir four (4) inches or more at DBH.

#### 2.2 - Utilization

##### 2.2.4 - Skidding length (2/14)

Skidding of unlimbed tops or lengths over 17 feet is not permissible within Payment Units 1, 2, and 3. This is to protect the advanced regeneration within these units.

### 3 - Payments

#### 3.3 - Pre-measured Sales

##### 3.3.4 - Dividing payment units (7/14)

Payment Unit(s) \$18,000 in value or greater may be divided at the request of the Purchaser and upon approval of the Unit Manager. Dividing Payment Units is a contract modification which requires a Timber Sale Contract Supplement. There will be only one division per Payment Unit.

#### 3.4 - Damaged Timber

##### 3.4.1 - Damaged timber (6/14)

General Condition and Requirement 3.4 Damaged Timber, defines liquidated damages for undesignated live merchantable trees which are cut or injured. In addition, extreme care should be taken to avoid damage to tree seedlings and saplings.

Within the sale area, if more than 40% of the tree seedlings or saplings (1/4" to 4.5" DBH) within a specified portion of the sale area are damaged, liquidated damages will be assessed at \$500 per acre for all acreage within that specified portion of the sale area that was damaged.

### 4 - Transportation

#### 4.2 - Maintenance

##### 4.2.1 - Hauling restriction (12/08)

Hauling may be restricted on forest roads by the Unit Manager or his/her representative. The restriction may occur during spring breakup or during other wet weather conditions.



## **5 - Operations**

### 5.2 - Conduct of Operations

#### 5.2.3 - Operating Restrictions

##### 5.2.3.1 - Operating restrictions (9/11)

Within Payment Unit(s) 4, cutting and skidding limited to the period of December 1st to March 31st, unless there is an extended dry or frozen period and the sale administrator approves of harvesting during that time period. This restriction is because of low wet ground within the Payment Unit.

#### 5.2.22 - Operating Caution

##### 5.2.22.1 - Operating caution (6/11)

It is recommended, but not required, that within Payment Unit(s) 1, 2, and 3, cutting and skidding occur during dry summer or frozen winter conditions. The reason for the recommendation is because of some low areas within each of the Payment Units.

### 5.4 - Soil Protection

#### 5.4.1 - Rutting restriction, general (7/16)

Operations are to cease immediately if equipment and weather conditions result in rutting of roads and/or skid trails which is 12 inches or greater in depth and 50 feet in length. The Unit Manager or his/her representative may restrict hauling and/or skidding if ruts exceed the specified depth. With the Unit Manager or his/her representative's approval, the Purchaser may return to the area when the risk of rutting has decreased.

## **6 - Safety and Fire Prevention**

### 6.2 - Signing

#### 6.2.1 - Road posting (9/09)

The Purchaser is responsible for posting and maintaining caution signs on County Road 551 prior to beginning operations. The road must be posted at appropriate distances from the sale area to warn of logging activity and truck traffic. Signs must be removed when harvest operations are suspended or completed. The Purchaser will provide these signs.

## **7 - Other Conditions**

### 7.5 - Loss

#### 7.5.1 - Deteriorating timber (7/09)

The sale area has received damage from the spruce budworm. The Purchaser should harvest the wood as soon as possible. The Department of Natural Resources is held free of responsibility of any further damage or deterioration due to delay in harvesting. At this time, some defoliation is occurring but no mortality has occurred.



# TIMBER SALE MAP

This information provided by authority of Part 525, 1994 PA 451, as amended.

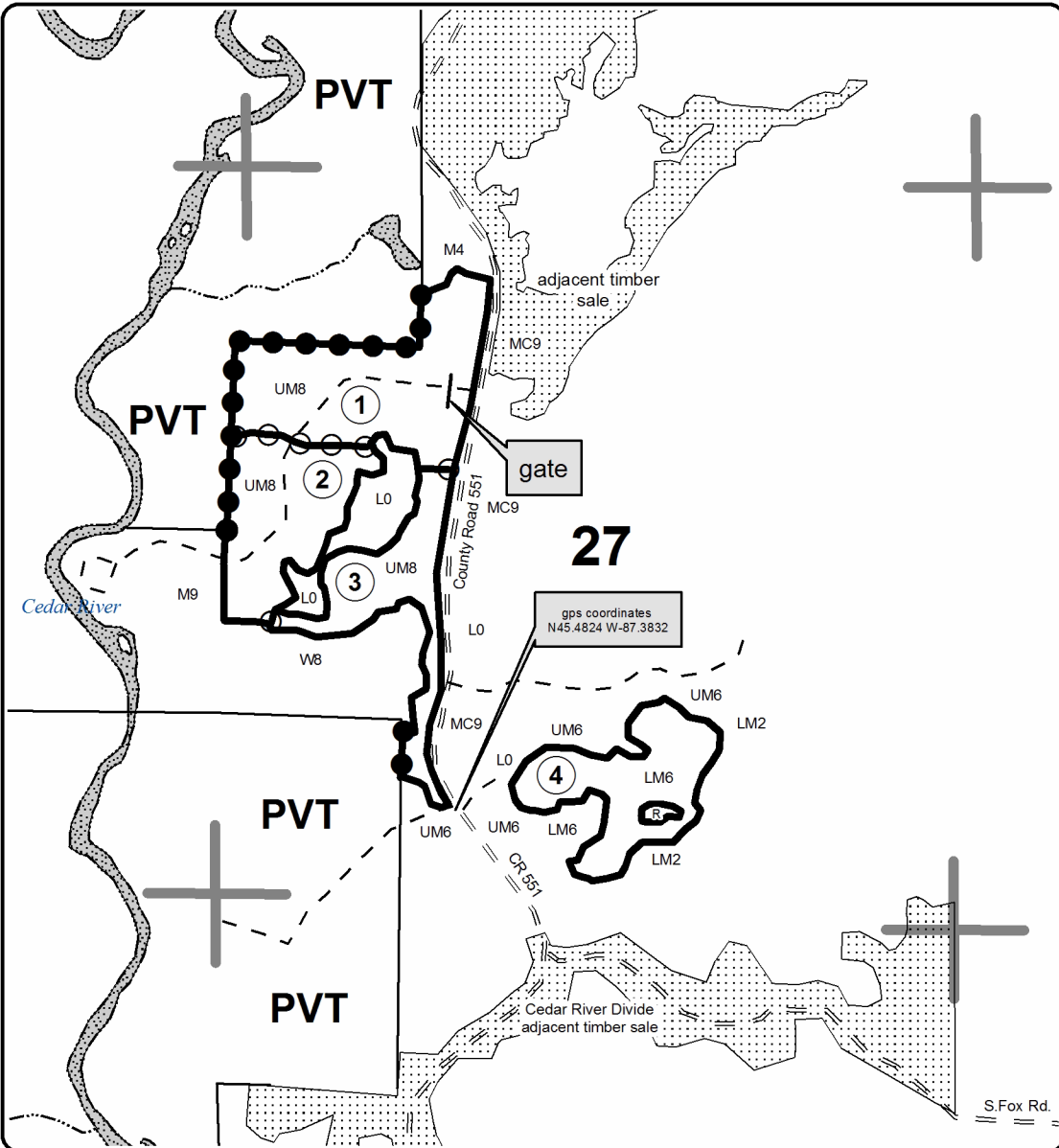
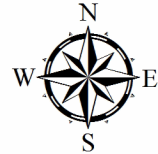
Sale Number	Year
33-035	16

Forest Management Unit Escanaba Management Unit	County Menominee County	Mapped By Beaudo	Date 8/31/2016	Page 1	of 1
Township 36N	Range 25W	Section(s) and Subdivision(s) Sec 27 - NENW, NESW, NWSE, NWSW, SENW, SESW, SWNW, SWSE; Sec 28 - NESE & SENE.	Scale 1:15,840		

Cover Type				Density	
A = Aspen	H = Hemlock	N = Marsh	U = Upland Brush	0 = Non Stocked	5 = Pole Timber Medium
B = Paper Birch	J = Jack Pine	O = Oak	UM = Upland Mixed	1 = Seedling Sapling Poor	6 = Pole Timber Well
C = Cedar	L = Lowland Brush	P = Lowland Poplar	V = Bog or Marsh	2 = Seedling Sapling Medium	7 = Saw Timber Poor
D = Treed Bog	LM = Lowland Mixed	Q = Mixed Swamp Conifer	W = White Pine	3 = Seedling Sapling Well	8 = Saw Timber Medium
E = Swamp Hdwoods	M = Mpl, Bch, Brch	R = Red Pine	X = Non Stocked	4 = Pole Timber Poor	9 = Saw Timber Well
F = Spruce Fir	MC = Mixed Conifer	S = Black Spruce	Z = Water		
G = Grass	MD = Mixed Deciduous	T = Tamarack			

PU	Acres	PU	Acres
1	33.8	3	17.5
2	21.6	4	19.2

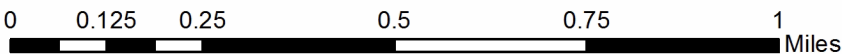
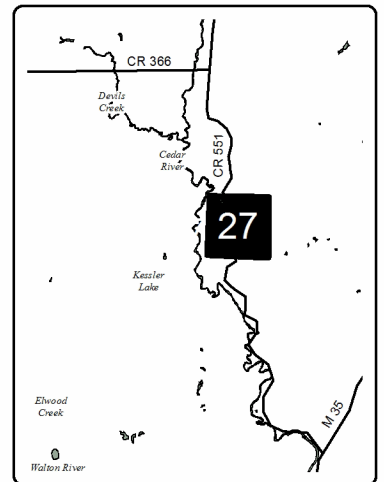
**Blue Chair SBW**  
**Compartment 45**  
**92.1 Acres**



**Legend**

- Against State (Red)
- Payment Unit (Yellow)
- Private Line (Blue)
- Section Corners
- 27** Section Number
- County Gravel Road
- Two Track Road
- State Land Boundary
- Payment Unit
- Retention Patch
- PVT** Private Property
- State Timber Sale

Locator Map  
1:200,000



## TIMBER SALE INFORMATION

### Pine Ridge Mix (33-036-16)

Menominee County (Advertised Price \$115,081.75)

SALE NOTE: Payment Units 3, 4, part of 6, and 8 will be planted with red pine following the harvest. So, all trees greater than two (2) inches need to be cut and all stumps must cut off low.

A timber sale contract for this lump sum, sealed bid timber sale will be awarded to the responsible bidder offering the highest sealed bid price. Bids must be at or above the following advertised price for each species:

<u>PRODUCTS &amp; SPECIES</u>	<u>ESTIMATED UNITS*</u>	<u>ADVERTISED PRICE</u>
Sawtimber		
Green Ash	4.60 MBF	\$ 80.00 / MBF
Paper Birch	1.50 MBF	\$ 88.00 / MBF
Red Maple	7.10 MBF	\$ 253.00 / MBF
White Pine	51.00 MBF	\$ 87.00 / MBF
Pulpwood		
B. T. Aspen	78.00 Cords	\$ 37.30 / Cord
Balsam Fir	56.00 Cords	\$ 30.35 / Cord
Hemlock	2.00 Cords	\$ 16.00 / Cord
Mixed Hardwood	808.00 Cords	\$ 38.10 / Cord
Mixed Spruce	75.00 Cords	\$ 27.75 / Cord
N. White Cedar	136.00 Cords	\$ 35.50 / Cord
Red Pine	811.00 Cords	\$ 65.95 / Cord
Tamarack	19.00 Cords	\$ 19.05 / Cord
White Pine	280.00 Cords	\$ 43.45 / Cord

\* The total volume is statistically estimated within plus (+) or minus (-) 9.79 percent. The estimated units are final and not subject to adjustment. Prospective bidders are urged to examine this timber and to make their own estimates of quantity and quality.

#### **BOND AND PAYMENT SCHEDULE:**

1. A bond in the amount of \$5,754.00 to insure faithful performance of the conditions of the contract will be deposited by the successful bidder within 21 days of the sale award.
2. Cutting in any sale or unit without the required advance payment would be considered a trespass.
3. Total payment must be paid in advance or according to the following schedule:
  - (a) Ten percent (10%) of the sale value must be paid within 21 days of the sale award.
  - (b) The 10% down payment will be credited towards the first unit cut.
4. If no cutting takes place, the 10% down payment will not be refunded.
5. Operations on the contract issued will terminate on 09/30/2019.

**Description of Timber by Payment Unit (PU)**

PU	MARKET GROUP	PRODUCT	QUANTITY	UNIT	ACRES	ADVERTISE PRICE
1	White Pine	Sawtimber	6.8	MBF	11.4	\$12,725.00
	B. T. Aspen	Pulpwood	13.0	Cords		
	Balsam Fir		8.0	Cords		
	Mixed Hardwood		50.0	Cords		
	<i>Paper Birch</i>		4.0	<i>Cords</i>		
	<i>Red Maple</i>		46.0	<i>Cords</i>		
	Red Pine		121.0	Cords		
	White Pine		35.0	Cords		
2	Green Ash	Sawtimber	4.6	MBF	26.4	\$25,358.85
	Paper Birch		1.5	MBF		
	Red Maple		5.9	MBF		
	White Pine		2.5	MBF		
	B. T. Aspen	Pulpwood	8.0	Cords		
	Balsam Fir		22.0	Cords		
	Mixed Hardwood		430.0	Cords		
	<i>Black Ash</i>		2.0	<i>Cords</i>		
	<i>Green Ash</i>		56.0	<i>Cords</i>		
	<i>Paper Birch</i>		39.0	<i>Cords</i>		
	<i>Red Maple</i>		331.0	<i>Cords</i>		
	<i>Yellow Birch</i>		2.0	<i>Cords</i>		
	Mixed Spruce		28.0	Cords		
	<i>Black Spruce</i>		24.0	<i>Cords</i>		
	<i>White Spruce</i>		4.0	<i>Cords</i>		
	N. White Cedar		19.0	Cords		
	Red Pine		35.0	Cords		
	Tamarack		9.0	Cords		
White Pine		43.0	Cords			
3	White Pine	Sawtimber	7.8	MBF	18.9	\$21,968.15
	B. T. Aspen	Pulpwood	19.0	Cords		
	Balsam Fir		5.0	Cords		
	Mixed Hardwood		58.0	Cords		
	<i>Paper Birch</i>		4.0	<i>Cords</i>		
	<i>Red Maple</i>		54.0	<i>Cords</i>		
	Mixed Spruce		17.0	Cords		
	<i>Black Spruce</i>		17.0	<i>Cords</i>		
	Red Pine		250.0	Cords		
	White Pine		29.0	Cords		
4	White Pine	Sawtimber	8.6	MBF	7.8	\$14,336.00
	B. T. Aspen	Pulpwood	6.0	Cords		
	Hemlock		2.0	Cords		
	Mixed Hardwood		9.0	Cords		
	<i>Red Maple</i>		9.0	<i>Cords</i>		
	Mixed Spruce		2.0	Cords		
	<i>Black Spruce</i>		2.0	<i>Cords</i>		
	N. White Cedar		2.0	Cords		
	Red Pine		170.0	Cords		
	White Pine		38.0	Cords		
5	Red Maple	Sawtimber	1.2	MBF	12.5	\$9,523.75
	Balsam Fir	Pulpwood	14.0	Cords		
	Mixed Hardwood		123.0	Cords		
	<i>Black Ash</i>		58.0	<i>Cords</i>		
	<i>Green Ash</i>		8.0	<i>Cords</i>		
	<i>Paper Birch</i>		15.0	<i>Cords</i>		
	<i>Red Maple</i>		37.0	<i>Cords</i>		
	<i>Yellow Birch</i>		5.0	<i>Cords</i>		
	N. White Cedar		111.0	Cords		

**Description of Timber by Payment Unit (PU), con't**

PU	MARKET GROUP	PRODUCT	QUANTITY	UNIT	ACRES	ADVERTISE PRICE
5 con't	Tamarack	Pulpwood	2.0	Cords		
	White Pine		3.0	Cords		
6	B. T. Aspen	Pulpwood	12.0	Cords	7.7	\$3,929.45
	Balsam Fir		2.0	Cords		
	Mixed Hardwood		17.0	Cords		
	<i>Paper Birch</i>		1.0	<i>Cords</i>		
	<i>Red Maple</i>		16.0	<i>Cords</i>		
	Mixed Spruce		7.0	Cords		
	<i>Black Spruce</i>		7.0	<i>Cords</i>		
	Red Pine		34.0	Cords		
	Tamarack		4.0	Cords		
	White Pine		6.0	Cords		
7	Mixed Hardwood	Pulpwood	55.0	Cords	3.1	\$2,433.70
	<i>Black Ash</i>		1.0	<i>Cords</i>		
	<i>Paper Birch</i>		4.0	<i>Cords</i>		
	<i>Red Maple</i>		50.0	<i>Cords</i>		
	Mixed Spruce		1.0	Cords		
	<i>White Spruce</i>		1.0	<i>Cords</i>		
	N. White Cedar		4.0	Cords		
	Tamarack		2.0	Cords		
	White Pine		3.0	Cords		
	8		White Pine	Sawtimber		
B. T. Aspen		Pulpwood	20.0	Cords		
Balsam Fir			5.0	Cords		
Mixed Hardwood			66.0	Cords		
<i>Paper Birch</i>			5.0	<i>Cords</i>		
<i>Red Maple</i>			61.0	<i>Cords</i>		
Mixed Spruce			20.0	Cords		
<i>Black Spruce</i>			17.0	<i>Cords</i>		
<i>White Spruce</i>			3.0	<i>Cords</i>		
Red Pine			201.0	Cords		
Tamarack			2.0	Cords		
White Pine			123.0	Cords		
TOTAL:			64.2	MBF		
TOTAL:			2,265.0	Cords		

## Sale Specific Conditions & Requirements

**Sale Name: Pine Ridge Mix**

**Sale Number: 33-036-16 Seq#: 1**

### 1 - Sale Area

#### 1.2 - Boundaries

##### 1.2.1 - Painted boundaries (1/14)

The sale boundary and Payment Unit boundaries are marked and identified by blue, red and yellow paint. Exterior sale boundary lines against private property are marked with blue paint. Exterior sale boundary lines against state are marked with red paint. The red painted trees along County Road 551 within Payment Units 1, 2, and 8 are included timber and should be harvested when each Payment Unit is paid for. Interior Payment Unit boundaries are marked with yellow paint. Yellow painted trees designating an interior Payment Unit boundary are only to be cut when all surrounding Payment Units have been paid for. Retention patches are bounded by red paint; no harvesting activities may occur within these retention areas.

### 2 - Timber Specifications

#### 2.1 - Included Timber

##### 2.1.1 - Clearcut unit(s) with unmerchantable trees (6/14)

Within Payment Unit(s) 3, 4, and 8, cut all trees that are two (2) inches or more at DBH.

Within Payment Units 2, 5, and 7, cut all trees that are three (3) inches or more at DBH; except trees marked with green paint. In addition, within Payment Unit 2, do not cut hemlock.

Within Payment Unit 6, cut all trees that are four (4) inches or more at DBH.

##### 2.1.4 - Species designation unit(s) (12/08)

Within Payment Unit(s) 1, all trees five (5) inches or more at DBH are designated for cutting; except hemlock, cedar, and those trees marked with green paint.

#### 2.2 - Utilization

##### 2.2.3 - Stump heights (4/07)

Stump heights within Payment Unit(s) 3, 4, 6, and 8 shall not exceed 12 inches for trees greater than 10 inches DBH and 4 inches for trees smaller than 10 inches DBH. This is in order to facilitate planting operations.

##### 2.2.4 - Skidding length (2/14)

Skidding of unlimbed tops or lengths over 17 feet is not permissible within Payment Unit 1. This is to prevent damage to the advanced regeneration that is present.

### 3 - Payments

#### 3.3 - Pre-measured Sales

##### 3.3.4 - Dividing payment units (7/14)

Payment Unit(s) \$18,000 in value or greater may be divided at the request of the Purchaser and upon approval of the Unit Manager. Dividing Payment Units is a contract modification which requires a Timber Sale Contract Supplement. There will be only one division per Payment Unit.

#### 3.4 - Damaged Timber

##### 3.4.1 - Damaged timber (6/14)

General Condition and Requirement 3.4 Damaged Timber, defines liquidated damages for undesignated live merchantable trees which are cut or injured. In addition, extreme care should be taken to avoid damage to tree seedlings and saplings.

Within Payment Unit 1, if more than 50% of the tree seedlings or saplings (1/4" to 4.5" DBH) within a specified portion of the sale area are damaged, liquidated damages will be assessed at \$500 per acre for all acreage within that specified portion of the sale area that was damaged.

## **4 - Transportation**

### 4.2 - Maintenance

#### 4.2.1 - Hauling restriction (12/08)

Hauling may be restricted on forest roads by the Unit Manager or his/her representative. The restriction may occur during spring breakup or during wet weather conditions.

#### 4.2.4 - Grading (12/14)

For completion of the sale, state forest roads must be graded. In general, this will require a road grader or bull dozer to shape up the roads after forest products have been hauled off site. This includes cleaning of drainage areas, grading, crowning and filling with gravel, if necessary. The grading equipment to be used must be approved by the Unit Manager or his/her representative.

## **5 - Operations**

### 5.2 - Conduct of Operations

#### 5.2.3 - Operating Restrictions

##### 5.2.3.1 - Operating restrictions (9/11)

Within Payment Unit(s) 2, 5, and 7, cutting and skidding are limited to the period of December 1st to March 31st, unless there is an extended dry or frozen period and the sale administrator approves of harvesting during that time period. This restriction is because of low wet ground within each of the units.

### 5.4 - Soil Protection

#### 5.4.1 - Rutting restriction, general (7/16)

Operations are to cease immediately if equipment and weather conditions result in rutting of roads and/or skid trails which is 12 inches or greater in depth and 50 feet in length. The Unit Manager or his/her representative may restrict hauling and/or skidding if ruts exceed the specified depth. With the Unit Manager or his/her representative's approval, the Purchaser may return to the area when the risk of rutting has decreased.

## **6 - Safety and Fire Prevention**

### 6.2 - Signing

#### 6.2.1 - Road posting (9/09)

The Purchaser is responsible for posting and maintaining caution signs on County Road 551 prior to beginning operations. The road must be posted at appropriate distances from the sale area to warn of logging activity and truck traffic. Signs must be removed when harvest operations are suspended or completed. The Purchaser will provide these signs.

## **7 - Other Conditions**

### 7.3 - Contract Modifications

#### 7.3.3 - Modification for reforestation (8/05)

When contractual work of Purchaser has been accepted for any Payment Unit identified on Sale Area Map, Payment Unit will be eliminated from the Sale Area on written notice so that reforestation operations can begin.



# TIMBER SALE MAP

This information provided by authority of Part 525, 1994 PA 451, as amended.

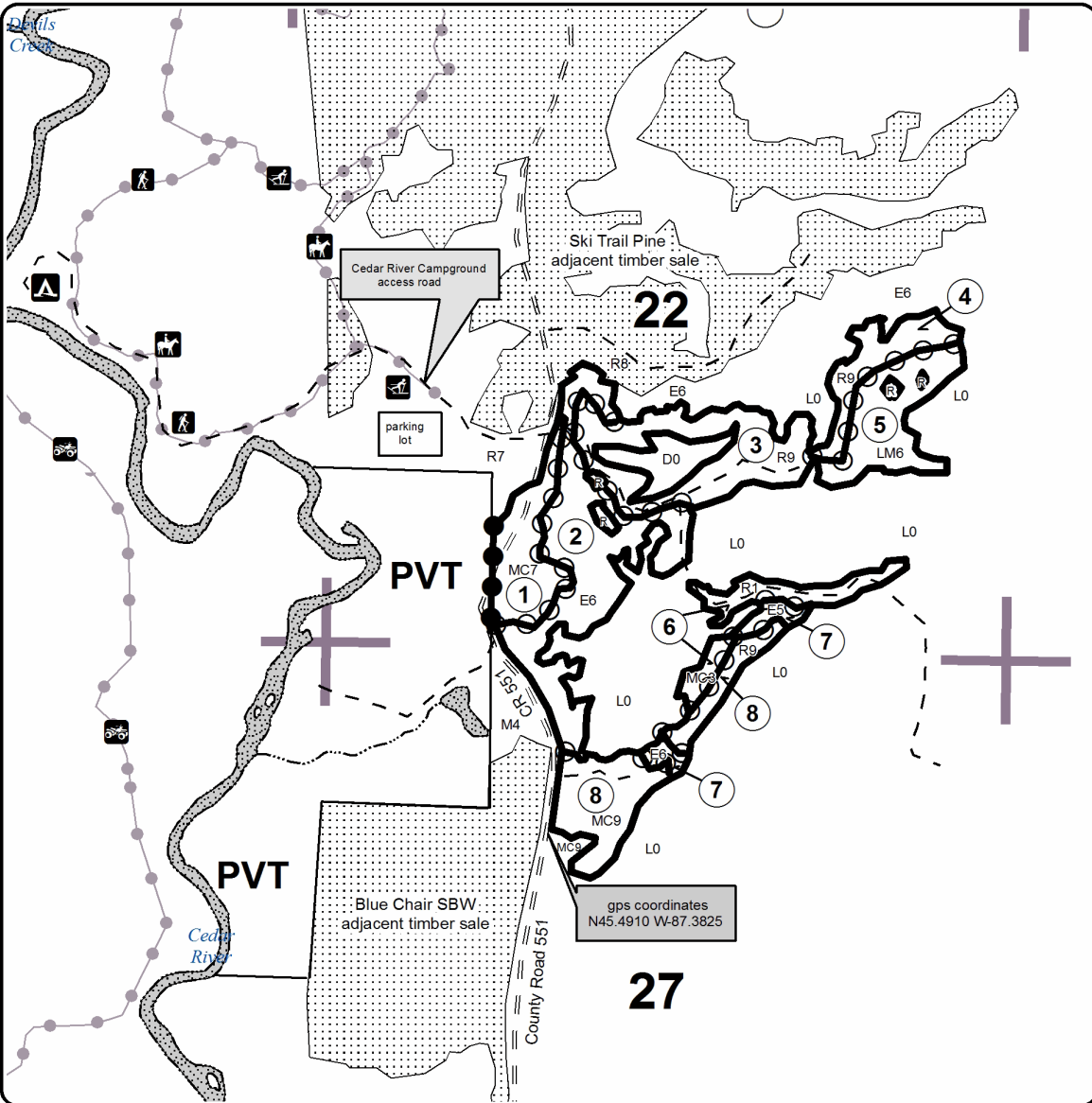
Sale Number	Year
33-036	16

Forest Management Unit	County	Mapped By	Date	Page	of
Escanaba Management Unit	Menominee County	Beaudou	9/15/2016	1	1
Township	Range	Section(s) and Subdivision(s)	Scale		
36N	25W	Sec 22 - NESE, NESW, NWSE, SENE, SESE, SESW, SWSE, SWSW; Sec 27 - NENW, NWNE & SENW.	1:15,840		

Cover Type				Density	
A = Aspen	H = Hemlock	N = Marsh	U = Upland Brush	0 = Non Stocked	5 = Pole Timber Medium
B = Paper Birch	J = Jack Pine	O = Oak	UM = Upland Mixed	1 = Seedling Sapling Poor	6 = Pole Timber Well
C = Cedar	L = Lowland Brush	P = Lowland Poplar	V = Bog or Marsh	2 = Seedling Sapling Medium	7 = Saw Timber Poor
D = Treed Bog	LM = Lowland Mixed	Q = Mixed Swamp Conifer	W = White Pine	3 = Seedling Sapling Well	8 = Saw Timber Medium
E = Swamp Hdwoods	M = Mpl, Bch, Brch	R = Red Pine	X = Non Stocked	4 = Pole Timber Poor	9 = Saw Timber Well
F = Spruce Fir	MC = Mixed Conifer	S = Black Spruce	Z = Water		
G = Grass	MD = Mixed Deciduous	T = Tamarack			

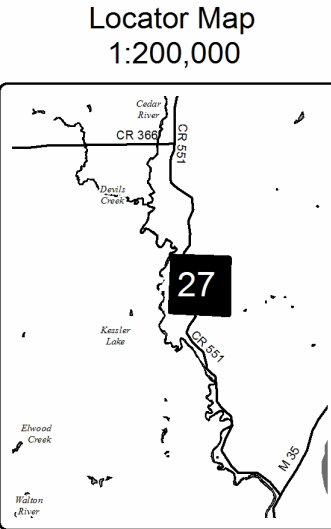
PU	Acres	PU	Acres
1	11.4	5	12.5
2	26.4	6	7.7
3	18.9	7	3.1
4	7.8	8	16.4

**Pine Ridge Mix**  
**Compartment 45**  
**104.2 Acres**



**Legend**

- Against State (Red)
- Payment Unit (Yellow)
- Private Line (Blue)
- Section Corner
- 27** Section Number
- County Gravel Road
- Two Track Road
- State Land Boundary
- Payment Unit
- Retention Patch
- Private Property
- State Timber Sale
- ORV Route
- Multi-use Trail





Pony Express Hardwood (33-032-16)  
 ; Menominee COUNTY

In response to the notice of sale to be held 3:00 p.m. (local time) on December 13, 2016, I am hereby submitting my sealed bid (firm offer) for the following forest products to be cut. Bids for individual species must be at or above the advertised price. All non-responsive bid forms may be rejected.

<u>PRODUCTS &amp; SPECIES</u>	<u>ESTIMATED VOLUME*</u>	<u>ADVERTISED PRICE</u>	<u>BID PRICE</u>
<b>Sawtimber</b>			
Basswood	17.00 MBF	\$ 230.00/MBF	\$ _____
Beech	18.00 MBF	\$ 55.00/MBF	\$ _____
Black Ash	3.70 MBF	\$ 90.00/MBF	\$ _____
Green Ash	46.30 MBF	\$ 90.00/MBF	\$ _____
Red Maple	249.10 MBF	\$ 237.00/MBF	\$ _____
Sugar Maple	98.10 MBF	\$ 406.00/MBF	\$ _____
White Pine	16.30 MBF	\$ 75.00/MBF	\$ _____
Yellow Birch	24.10 MBF	\$ 90.00/MBF	\$ _____
<b>Pulpwood</b>			
Balsam Fir	157.00 Cords	\$ 28.45/Cord	\$ _____
Hemlock	59.00 Cords	\$ 15.00/Cord	\$ _____
Mixed Aspen	65.00 Cords	\$ 35.00/Cord	\$ _____
Mixed Hardwood	3,216.00 Cords	\$ 35.75/Cord	\$ _____
Mixed Spruce	7.00 Cords	\$ 26.00/Cord	\$ _____
N. White Cedar	1,202.00 Cords	\$ 33.30/Cord	\$ _____
Tamarack	8.00 Cords	\$ 17.85/Cord	\$ _____
White Pine	59.00 Cords	\$ 40.75/Cord	\$ _____

\*These estimated volumes are final and not subject to adjustment. Prospective bidders are urged to examine this timber and to make their own estimates of quantity and quality.

I understand that any or all bids may be rejected. All bids must be signed and all bid items must be bid or the bid form may be rejected. I also understand that consideration and awarding a contract will be based upon my past performance and ability to complete the contract based upon equipment and staffing subject to my control.

FEDERAL ID: \_\_\_\_ - \_\_\_\_ - \_\_\_\_ or SOCIAL SECURITY NUMBER: \_\_\_\_ - \_\_\_\_ - \_\_\_\_

Company or individual bidding: \_\_\_\_\_

Company representative's name: \_\_\_\_\_

Address: \_\_\_\_\_

City: \_\_\_\_\_ State: \_\_\_\_\_ Zip: \_\_\_\_\_

IF AVAILABLE, PLEASE PLACE THE PERSONALIZED LABEL FROM YOUR PROSPECTUS IN THE ABOVE BOX.

Individual or company representative's signature: \_\_\_\_\_ Date: \_\_\_\_\_

Phone number : \_\_\_\_\_ Email (optional): \_\_\_\_\_

**THE WINNING BIDDER MUST COMPLETE THE VERIFICATION OF WORKER'S DISABILITY COMPENSATION ACT COMPLIANCE (ON REVERSE SIDE IF DOUBLE SIDED) WITHIN 21 DAYS OF SALE AWARD DATE**



FOR DEPARTMENT USE ONLY	
Sale Number (XX - XXX - XX - XX)	
Forest Management Unit:	

## TIMBER SALE VERIFICATION OF WORKER'S DISABILITY COMPENSATION ACT COMPLIANCE

As required by Act 317, P.A. 1969 (Worker's Compensation) and  
Part 5 of Act 451 of 1994, as amended.

### VERIFICATION OF WORKER'S DISABILITY COMPENSATION ACT COMPLIANCE

- This verification must be completed and submitted within 21 days of contract award and prior to the issuance of the timber sale contract.
- In addition, if boxes 2B or 2C are checked, then Notice of Exclusion or Certificate of Insurance must be submitted within twenty-one (21) days of the contract award and prior to the issuance of the timber sale contract.
- All information must be typed or printed except for written signatures.

Please Check Appropriate Categories:

1. My business is organized as (you **must** check one of the boxes below):
  - A.  Sole Proprietorship (individual)
  - B.  Partnership
  - C.  Corporation
2. You **must** check one of the boxes below:
  - A.  I certify my business is a sole proprietorship and it has no employees but the sole proprietor. I am not subject to the Worker's Compensation Laws.
  - B.  I certify my business has satisfied its obligation to the Worker's Compensation Act through the use of an approved Notice of Exclusion (BWC-337, Rev. 5/96). I will provide a copy of the Notice of Exclusion within 21 days of the contract award. (For questions or a copy of the BWC-337, please call the Worker's Compensation Bureau at 517-322-1195).
  - C.  I certify my business has a Worker's Compensation Policy. I will provide an original Certificate of Insurance within twenty-one (21) days of the contract award.
3. If you have checked item 2(A) or 2(B), you **must** indicate the number of **both** full-time and part-time employees, other than yourself, including family members and active partners (if none, you must enter "0").

\_\_\_\_\_ Full-time Employees

\_\_\_\_\_ Part-time Employees

Name of Business		Federal ID (or) Social Security No.	
Address		Telephone (       )	
City	State	ZIP	

*I hereby certify that the above information is true and correct. I agree to notify the Michigan DNR of any changes that occur in factors affecting my coverage during any of my present and future operations.*

\_\_\_\_\_  
Signature of Owner or Authorized Representative

\_\_\_\_\_  
Title

\_\_\_\_\_  
Date

Please complete the "SEALED BID" information on the next page

FORM

Powerline Divide ELB (33-033-16)

; Menominee COUNTY

In response to the notice of sale to be held 3:00 p.m. (local time) on December 13, 2016, I am hereby submitting my sealed bid (firm offer) for the following forest products to be cut. Bids for individual species must be at or above the advertised price. All non-responsive bid forms may be rejected.

<u>PRODUCTS &amp; SPECIES</u>	<u>ESTIMATED VOLUME*</u>	<u>ADVERTISED PRICE</u>	<u>BID PRICE</u>
<b>Sawtimber</b>			
Paper Birch	0.30 MBF	\$ 66.00/MBF	\$ _____
Red Maple	7.30 MBF	\$ 190.00/MBF	\$ _____
Sugar Maple	6.80 MBF	\$ 324.00/MBF	\$ _____
<b>Pulpwood</b>			
Balsam Fir	246.00 Cords	\$ 22.75/Cord	\$ _____
Balsam Poplar	93.00 Cords	\$ 28.00/Cord	\$ _____
Black Spruce	27.00 Cords	\$ 20.80/Cord	\$ _____
Hemlock	21.00 Cords	\$ 12.00/Cord	\$ _____
Mixed Aspen	479.00 Cords	\$ 28.00/Cord	\$ _____
Mixed Hardwood	1,122.00 Cords	\$ 28.60/Cord	\$ _____
N. White Cedar	1,789.00 Cords	\$ 26.65/Cord	\$ _____
Tamarack	116.00 Cords	\$ 14.25/Cord	\$ _____
White Pine	6.00 Cords	\$ 32.60/Cord	\$ _____

\*The volumes are statistically estimated within plus (+) or minus (-) 7.87 percent. These estimated volumes are final and not subject to adjustment. Prospective bidders are urged to examine this timber and to make their own estimates of quantity and quality.

I understand that any or all bids may be rejected. All bids must be signed and all bid items must be bid or the bid form may be rejected. I also understand that consideration and awarding a contract will be based upon my past performance and ability to complete the contract based upon equipment and staffing subject to my control.

FEDERAL ID: \_\_\_\_\_ or SOCIAL SECURITY NUMBER: \_\_\_\_\_

Company or individual bidding: \_\_\_\_\_

Company representative's name: \_\_\_\_\_

Address: \_\_\_\_\_

City: \_\_\_\_\_ State: \_\_\_\_\_ Zip: \_\_\_\_\_

IF AVAILABLE, PLEASE PLACE THE PERSONALIZED LABEL FROM YOUR PROSPECTUS IN THE ABOVE BOX.

Individual or company representative's signature: \_\_\_\_\_ Date: \_\_\_\_\_

Phone number : \_\_\_\_\_ Email (optional): \_\_\_\_\_

**THE WINNING BIDDER MUST COMPLETE THE VERIFICATION OF WORKER'S DISABILITY COMPENSATION ACT COMPLIANCE (ON REVERSE SIDE IF DOUBLE SIDED) WITHIN 21 DAYS OF SALE AWARD DATE**



<b>FOR DEPARTMENT USE ONLY</b>
Sale Number (XX - XXX - XX - XX)
Forest Management Unit:

## TIMBER SALE VERIFICATION OF WORKER'S DISABILITY COMPENSATION ACT COMPLIANCE

*As required by Act 317, P.A. 1969 (Worker's Compensation) and  
Part 5 of Act 451 of 1994, as amended.*

### VERIFICATION OF WORKER'S DISABILITY COMPENSATION ACT COMPLIANCE

- This verification must be completed and submitted within 21 days of contract award and prior to the issuance of the timber sale contract.
- In addition, if boxes 2B or 2C are checked, then Notice of Exclusion or Certificate of Insurance must be submitted within twenty-one (21) days of the contract award and prior to the issuance of the timber sale contract.
- All information must be typed or printed except for written signatures.

Please Check Appropriate Categories:

1. My business is organized as (you **must** check one of the boxes below):
  - A.  Sole Proprietorship (individual)
  - B.  Partnership
  - C.  Corporation
2. You **must** check one of the boxes below:
  - A.  I certify my business is a sole proprietorship and it has no employees but the sole proprietor. I am not subject to the Worker's Compensation Laws.
  - B.  I certify my business has satisfied its obligation to the Worker's Compensation Act through the use of an approved Notice of Exclusion (BWC-337, Rev. 5/96). I will provide a copy of the Notice of Exclusion within 21 days of the contract award. (For questions or a copy of the BWC-337, please call the Worker's Compensation Bureau at 517-322-1195).
  - C.  I certify my business has a Worker's Compensation Policy. I will provide an original Certificate of Insurance within twenty-one (21) days of the contract award.
3. If you have checked item 2(A) or 2(B), you **must** indicate the number of **both** full-time and part-time employees, other than yourself, including family members and active partners (if none, you must enter "0").

\_\_\_\_\_ Full-time Employees

\_\_\_\_\_ Part-time Employees

Name of Business		Federal ID (or) Social Security No.	
Address		Telephone (       )	
City	State	ZIP	

*I hereby certify that the above information is true and correct. I agree to notify the Michigan DNR of any changes that occur in factors affecting my coverage during any of my present and future operations.*

\_\_\_\_\_  
Signature of Owner or Authorized Representative

\_\_\_\_\_  
Title

\_\_\_\_\_  
Date

**Please complete the "SEALED BID" information on the next page**

Checkerboard Hardwood SBW (33-034-16)  
 ; Menominee COUNTY

In response to the notice of sale to be held 3:00 p.m. (local time) on December 13, 2016, I am hereby submitting my sealed bid (firm offer) for the following forest products to be cut. Bids for individual species must be at or above the advertised price. All non-responsive bid forms may be rejected.

<u>PRODUCTS &amp; SPECIES</u>	<u>ESTIMATED VOLUME*</u>	<u>ADVERTISED PRICE</u>	<u>BID PRICE</u>
<b>Sawtimber</b>			
Green Ash	13.90 MBF	\$ 90.00/MBF	\$ _____
Paper Birch	2.40 MBF	\$ 83.00/MBF	\$ _____
Red Maple	57.00 MBF	\$ 237.00/MBF	\$ _____
White Pine	3.50 MBF	\$ 75.00/MBF	\$ _____
<b>Pulpwood</b>			
Balsam Fir	459.00 Cords	\$ 28.45/Cord	\$ _____
Balsam Poplar	70.00 Cords	\$ 35.00/Cord	\$ _____
Mixed Hardwood	1,418.00 Cords	\$ 35.75/Cord	\$ _____
N. White Cedar	5.00 Cords	\$ 33.30/Cord	\$ _____
Quaking Aspen	77.00 Cords	\$ 35.00/Cord	\$ _____
White Pine	10.00 Cords	\$ 40.75/Cord	\$ _____
White Spruce	152.00 Cords	\$ 26.00/Cord	\$ _____

\*The volumes are statistically estimated within plus (+) or minus (-) 7.34 percent. These estimated volumes are final and not subject to adjustment. Prospective bidders are urged to examine this timber and to make their own estimates of quantity and quality.

I understand that any or all bids may be rejected. All bids must be signed and all bid items must be bid or the bid form may be rejected. I also understand that consideration and awarding a contract will be based upon my past performance and ability to complete the contract based upon equipment and staffing subject to my control.

FEDERAL ID: \_\_\_\_\_ or SOCIAL SECURITY NUMBER: \_\_\_\_\_

Company or individual bidding: \_\_\_\_\_

Company representative's name: \_\_\_\_\_

Address: \_\_\_\_\_

City: \_\_\_\_\_ State: \_\_\_\_\_ Zip: \_\_\_\_\_

IF AVAILABLE, PLEASE PLACE THE PERSONALIZED LABEL FROM YOUR PROSPECTUS IN THE ABOVE BOX.

Individual or company representative's signature: \_\_\_\_\_ Date: \_\_\_\_\_

Phone number : \_\_\_\_\_ Email (optional): \_\_\_\_\_

**THE WINNING BIDDER MUST COMPLETE THE VERIFICATION OF WORKER'S DISABILITY COMPENSATION ACT COMPLIANCE (ON REVERSE SIDE IF DOUBLE SIDED) WITHIN 21 DAYS OF SALE AWARD DATE**



<b>FOR DEPARTMENT USE ONLY</b>
Sale Number (XX - XXX - XX - XX)
Forest Management Unit:

## TIMBER SALE VERIFICATION OF WORKER'S DISABILITY COMPENSATION ACT COMPLIANCE

*As required by Act 317, P.A. 1969 (Worker's Compensation) and  
Part 5 of Act 451 of 1994, as amended.*

### VERIFICATION OF WORKER'S DISABILITY COMPENSATION ACT COMPLIANCE

- This verification must be completed and submitted within 21 days of contract award and prior to the issuance of the timber sale contract.
- In addition, if boxes 2B or 2C are checked, then Notice of Exclusion or Certificate of Insurance must be submitted within twenty-one (21) days of the contract award and prior to the issuance of the timber sale contract.
- All information must be typed or printed except for written signatures.

Please Check Appropriate Categories:

1. My business is organized as (you **must** check one of the boxes below):
  - A.  Sole Proprietorship (individual)
  - B.  Partnership
  - C.  Corporation
  
2. You **must** check one of the boxes below:
  - A.  I certify my business is a sole proprietorship and it has no employees but the sole proprietor. I am not subject to the Worker's Compensation Laws.
  - B.  I certify my business has satisfied its obligation to the Worker's Compensation Act through the use of an approved Notice of Exclusion (BWC-337, Rev. 5/96). I will provide a copy of the Notice of Exclusion within 21 days of the contract award. (For questions or a copy of the BWC-337, please call the Worker's Compensation Bureau at 517-322-1195).
  - C.  I certify my business has a Worker's Compensation Policy. I will provide an original Certificate of Insurance within twenty-one (21) days of the contract award.
  
3. If you have checked item 2(A) or 2(B), you **must** indicate the number of **both** full-time and part-time employees, other than yourself, including family members and active partners (if none, you must enter "0").

\_\_\_\_\_ Full-time Employees

\_\_\_\_\_ Part-time Employees

Name of Business		Federal ID (or) Social Security No.	
Address		Telephone (       )	
City	State	ZIP	

*I hereby certify that the above information is true and correct. I agree to notify the Michigan DNR of any changes that occur in factors affecting my coverage during any of my present and future operations.*

\_\_\_\_\_  
Signature of Owner or Authorized Representative

\_\_\_\_\_  
Title

\_\_\_\_\_  
Date

**Please complete the "SEALED BID" information on the next page**

FORM

Blue Chair SBW (33-035-16)  
; Menominee COUNTY

In response to the notice of sale to be held 3:00 p.m. (local time) on December 13, 2016, I am hereby submitting my sealed bid (firm offer) for the following forest products to be cut. Bids for individual species must be at or above the advertised price. All non-responsive bid forms may be rejected.

<u>PRODUCTS &amp; SPECIES</u>	<u>ESTIMATED VOLUME*</u>	<u>ADVERTISED PRICE</u>	<u>BID PRICE</u>
<b>Sawtimber</b>			
Paper Birch	0.50 MBF	\$ 83.00/MBF	\$ _____
Red Maple	48.50 MBF	\$ 237.00/MBF	\$ _____
White Pine	98.60 MBF	\$ 75.00/MBF	\$ _____
<b>Pulpwood</b>			
Balsam Fir	113.00 Cords	\$ 28.45/Cord	\$ _____
Mixed Aspen	60.00 Cords	\$ 35.00/Cord	\$ _____
Mixed Hardwood	752.00 Cords	\$ 35.75/Cord	\$ _____
Mixed Spruce	95.00 Cords	\$ 26.00/Cord	\$ _____
N. White Cedar	164.00 Cords	\$ 33.30/Cord	\$ _____
Red Pine	148.00 Cords	\$ 61.80/Cord	\$ _____
White Pine	433.00 Cords	\$ 40.75/Cord	\$ _____

\*The volumes are statistically estimated within plus (+) or minus (-) 11.24 percent. These estimated volumes are final and not subject to adjustment. Prospective bidders are urged to examine this timber and to make their own estimates of quantity and quality.

I understand that any or all bids may be rejected. All bids must be signed and all bid items must be bid or the bid form may be rejected. I also understand that consideration and awarding a contract will be based upon my past performance and ability to complete the contract based upon equipment and staffing subject to my control.

FEDERAL ID: \_\_\_\_\_ or SOCIAL SECURITY NUMBER: \_\_\_\_\_

Company or individual bidding: \_\_\_\_\_

Company representative's name: \_\_\_\_\_

Address: \_\_\_\_\_

City: \_\_\_\_\_ State: \_\_\_\_\_ Zip: \_\_\_\_\_

IF AVAILABLE, PLEASE PLACE THE PERSONALIZED LABEL FROM YOUR PROSPECTUS IN THE ABOVE BOX.

Individual or company representative's signature: \_\_\_\_\_ Date: \_\_\_\_\_

Phone number : \_\_\_\_\_ Email (optional): \_\_\_\_\_

**THE WINNING BIDDER MUST COMPLETE THE VERIFICATION OF WORKER'S DISABILITY COMPENSATION ACT COMPLIANCE (ON REVERSE SIDE IF DOUBLE SIDED) WITHIN 21 DAYS OF SALE AWARD DATE**



<b>FOR DEPARTMENT USE ONLY</b>
Sale Number (XX - XXX - XX - XX)
Forest Management Unit:

## TIMBER SALE VERIFICATION OF WORKER'S DISABILITY COMPENSATION ACT COMPLIANCE

*As required by Act 317, P.A. 1969 (Worker's Compensation) and  
Part 5 of Act 451 of 1994, as amended.*

### VERIFICATION OF WORKER'S DISABILITY COMPENSATION ACT COMPLIANCE

- This verification must be completed and submitted within 21 days of contract award and prior to the issuance of the timber sale contract.
- In addition, if boxes 2B or 2C are checked, then Notice of Exclusion or Certificate of Insurance must be submitted within twenty-one (21) days of the contract award and prior to the issuance of the timber sale contract.
- All information must be typed or printed except for written signatures.

Please Check Appropriate Categories:

1. My business is organized as (you **must** check one of the boxes below):
  - A.  Sole Proprietorship (individual)
  - B.  Partnership
  - C.  Corporation
2. You **must** check one of the boxes below:
  - A.  I certify my business is a sole proprietorship and it has no employees but the sole proprietor. I am not subject to the Worker's Compensation Laws.
  - B.  I certify my business has satisfied its obligation to the Worker's Compensation Act through the use of an approved Notice of Exclusion (BWC-337, Rev. 5/96). I will provide a copy of the Notice of Exclusion within 21 days of the contract award. (For questions or a copy of the BWC-337, please call the Worker's Compensation Bureau at 517-322-1195).
  - C.  I certify my business has a Worker's Compensation Policy. I will provide an original Certificate of Insurance within twenty-one (21) days of the contract award.
3. If you have checked item 2(A) or 2(B), you **must** indicate the number of **both** full-time and part-time employees, other than yourself, including family members and active partners (if none, you must enter "0").

\_\_\_\_\_ Full-time Employees

\_\_\_\_\_ Part-time Employees

Name of Business		Federal ID (or) Social Security No.	
Address		Telephone (       )	
City	State	ZIP	

*I hereby certify that the above information is true and correct. I agree to notify the Michigan DNR of any changes that occur in factors affecting my coverage during any of my present and future operations.*

\_\_\_\_\_  
Signature of Owner or Authorized Representative

\_\_\_\_\_  
Title

\_\_\_\_\_  
Date

**Please complete the "SEALED BID" information on the next page**



Pine Ridge Mix (33-036-16)  
 ; Menominee COUNTY

In response to the notice of sale to be held 3:00 p.m. (local time) on December 13, 2016, I am hereby submitting my sealed bid (firm offer) for the following forest products to be cut. Bids for individual species must be at or above the advertised price. All non-responsive bid forms may be rejected.

<u>PRODUCTS &amp; SPECIES</u>	<u>ESTIMATED VOLUME*</u>	<u>ADVERTISED PRICE</u>	<u>BID PRICE</u>
<b>Sawtimber</b>			
Green Ash	4.60 MBF	\$ 80.00/MBF	\$ _____
Paper Birch	1.50 MBF	\$ 88.00/MBF	\$ _____
Red Maple	7.10 MBF	\$ 253.00/MBF	\$ _____
White Pine	51.00 MBF	\$ 87.00/MBF	\$ _____
<b>Pulpwood</b>			
B. T. Aspen	78.00 Cords	\$ 37.30/Cord	\$ _____
Balsam Fir	56.00 Cords	\$ 30.35/Cord	\$ _____
Hemlock	2.00 Cords	\$ 16.00/Cord	\$ _____
Mixed Hardwood	808.00 Cords	\$ 38.10/Cord	\$ _____
Mixed Spruce	75.00 Cords	\$ 27.75/Cord	\$ _____
N. White Cedar	136.00 Cords	\$ 35.50/Cord	\$ _____
Red Pine	811.00 Cords	\$ 65.95/Cord	\$ _____
Tamarack	19.00 Cords	\$ 19.05/Cord	\$ _____
White Pine	280.00 Cords	\$ 43.45/Cord	\$ _____

\*The volumes are statistically estimated within plus (+) or minus (-) 9.79 percent. These estimated volumes are final and not subject to adjustment. Prospective bidders are urged to examine this timber and to make their own estimates of quantity and quality.

I understand that any or all bids may be rejected. All bids must be signed and all bid items must be bid or the bid form may be rejected. I also understand that consideration and awarding a contract will be based upon my past performance and ability to complete the contract based upon equipment and staffing subject to my control.

FEDERAL ID: \_\_\_\_\_ or SOCIAL SECURITY NUMBER: \_\_\_\_\_  
 Company or individual bidding: \_\_\_\_\_  
 Company representative's name: \_\_\_\_\_  
 Address: \_\_\_\_\_  
 City: \_\_\_\_\_ State: \_\_\_\_\_ Zip: \_\_\_\_\_

IF AVAILABLE, PLEASE PLACE THE PERSONALIZED LABEL FROM YOUR PROSPECTUS IN THE ABOVE BOX.

Individual or company representative's signature: \_\_\_\_\_ Date: \_\_\_\_\_

Phone number : \_\_\_\_\_ Email (optional): \_\_\_\_\_

**THE WINNING BIDDER MUST COMPLETE THE VERIFICATION OF WORKER'S DISABILITY COMPENSATION ACT COMPLIANCE (ON REVERSE SIDE IF DOUBLE SIDED) WITHIN 21 DAYS OF SALE AWARD DATE**



FOR DEPARTMENT USE ONLY	
Sale Number (XX - XXX - XX - XX)	
Forest Management Unit:	

## TIMBER SALE VERIFICATION OF WORKER'S DISABILITY COMPENSATION ACT COMPLIANCE

As required by Act 317, P.A. 1969 (Worker's Compensation) and  
Part 5 of Act 451 of 1994, as amended.

### VERIFICATION OF WORKER'S DISABILITY COMPENSATION ACT COMPLIANCE

- This verification must be completed and submitted within 21 days of contract award and prior to the issuance of the timber sale contract.
- In addition, if boxes 2B or 2C are checked, then Notice of Exclusion or Certificate of Insurance must be submitted within twenty-one (21) days of the contract award and prior to the issuance of the timber sale contract.
- All information must be typed or printed except for written signatures.

Please Check Appropriate Categories:

1. My business is organized as (you **must** check one of the boxes below):
  - A.  Sole Proprietorship (individual)
  - B.  Partnership
  - C.  Corporation
2. You **must** check one of the boxes below:
  - A.  I certify my business is a sole proprietorship and it has no employees but the sole proprietor. I am not subject to the Worker's Compensation Laws.
  - B.  I certify my business has satisfied its obligation to the Worker's Compensation Act through the use of an approved Notice of Exclusion (BWC-337, Rev. 5/96). I will provide a copy of the Notice of Exclusion within 21 days of the contract award. (For questions or a copy of the BWC-337, please call the Worker's Compensation Bureau at 517-322-1195).
  - C.  I certify my business has a Worker's Compensation Policy. I will provide an original Certificate of Insurance within twenty-one (21) days of the contract award.
3. If you have checked item 2(A) or 2(B), you **must** indicate the number of **both** full-time and part-time employees, other than yourself, including family members and active partners (if none, you must enter "0").

\_\_\_\_\_ Full-time Employees

\_\_\_\_\_ Part-time Employees

Name of Business		Federal ID (or) Social Security No.	
Address		Telephone (       )	
City	State	ZIP	

*I hereby certify that the above information is true and correct. I agree to notify the Michigan DNR of any changes that occur in factors affecting my coverage during any of my present and future operations.*

\_\_\_\_\_  
Signature of Owner or Authorized Representative

\_\_\_\_\_  
Title

\_\_\_\_\_  
Date

Please complete the "SEALED BID" information on the next page