



**DEPARTMENT OF NATURAL RESOURCES  
STATE OF MICHIGAN**

**TIMBER SALE PROSPECTUS #5788**

SCHEDULED SALE DATE AND TIME: 3:00 p.m. (local time) on January 10, 2017.

LOCATION: ESCANABA OFFICE, 6833 HWY 2, 41 & M-35, GLADSTONE, MI 49837.

PROSPECTUS NOTE: The bidder is advised to inspect the sale area and review the location, estimated volumes, operating costs and contract terms of proposed sales. Please be aware that some landowners may request 60 days or more notice for access across their land.

Notice is hereby given that bids will be received by the Unit Manager, ESCANABA MANAGEMENT UNIT, for certain timber on the following described lands:

East of Rapid (33-002-16)

Delta County, Advertised Price \$43,073.50, 71.2 Acres, Hardwood, Spruce/Fir/Tamarack.

SALE NOTE: The best access into units 4, 5, 6, 7, and 8 is through private property to the south. A winter road will be required off the Engineer road if access through private property is not obtained. Contact the Escanaba Forest Resources Office for landowner contact information.

North and West of Rapid (33-008-16)

Delta County, Advertised Price \$13,761.60, 36.7 Acres, Hardwood, Spruce/Fir/Tamarack.

SALE NOTE: Sale access is in winter months due to landowner requirements. Contact the Escanaba Forest Management Unit Office for landowner contact information.

Access may be through private land.

Pine Trail (33-009-16)

Delta County, Advertised Price \$433,173.65, 400.3 Acres, Red Pine, Spruce/Fir/Tamarack.

SALE NOTE: A pre sale conference prior to cutting in any unit will be required with the sale administrator to lay out crossing locations along the Days River pathway. Note: the red pine pulpwood volumes include red pine sawlogs.

A recreation site such as a trail, pathway, or campground is within the sale area or the vicinity. Certain restrictions/specifications may be applicable including time restrictions.

Minnewaska (33-010-16)

Delta County, Advertised Price \$50,245.95, 86.2 Acres, Red Pine, Spruce/Fir/Tamarack.

SALE NOTE: Note: The red pine pulpwood volumes consist of red pine sawlog and pulpwood.

Over the Bridge (33-011-16)

Delta County, Advertised Price \$87,292.10, 135.4 Acres, Hardwood, Red Pine.

SALE NOTE: A Department gate is located at the beginning of the access road into the sale. The Department has a management easement for use of this access road. Contact the Escanaba Forest Resources Division office for landowner contact information.

Access may be through private land.

BID INSTRUCTIONS (VER. 09/02/2016):

1. Scheduled Bid Location, Date, and Time (2/11)

Bids must be received by the Unit Manager, ESCANABA OFFICE, 6833 HWY 2, 41 & M-35, GLADSTONE, MI 49837, no later than 3:00 p.m. (local time) on January 10, 2017. For further information concerning this sale, contact Eric Thompson at 906-786-2354.

2. Bidder's Qualifications (5/16)

Purchaser shall obtain workers compensation insurance to cover claims under Michigan's Worker's Disability Compensation Act of 1969 or similar employee benefit act of any other state applicable to an employee. If all or part of a timber sale was prepared by a private contractor, the contractor and that contractor's company are not permitted to bid on the timber sale contract. Bids will not be accepted from individuals or companies appearing on the DNR/FRD No-Bid List. This list contains the names of purchasers who previously failed to execute a contract within 21-days or who have a history of poor performance.

3. Preparation of Sealed Bids (5/16)

Bid Forms may be completed online thru Michigan DNR Timber Sale Online Bidding (OLB) at [www.michigan.gov/timberbidding](http://www.michigan.gov/timberbidding) or by completing the hardcopy Bid Form found in the Timber Sale Prospectus. Hardcopy Bid Forms shall be manually signed in ink. Registration in OLB is considered your 'signature' for all bids submitted thru that system. Bid prices must be entered for each species and product in the Bid Price column for all material subject to bidding and all fill-in blanks must be completed. If erasures or other changes appear on the hardcopy Bid Form, each erasure or change must be initialed by the person signing the bid.

4. Submission of Sealed Bids (5/16)

Bid forms may be obtained from the Unit Manager or thru OLB. Bids may be submitted hardcopy or thru OLB. All hardcopy bids must be submitted on the bid form and in an envelope clearly identified as described in this section. NOTE: Only one bid form per bid envelope. Sealed bids must be submitted to the Unit office designated in the prospectus and must be submitted at or prior to the time established in the prospectus. The envelope should show on the outside (a) the sale name or number and (b) the date and time of bid opening, as shown in the prospectus. Bids received after the time specified in the sale prospectus are late bids and will be rejected.

It is possible for a bidder to submit multiple bids on a single sale. For example, a bid may be submitted hardcopy and a bid may be submitted thru OLB. Or, two bidders from the same company could both submit bids on the same sale. If this were to happen, the State would accept all bids received and award the contract accordingly. All bidding and contractual requirements would apply to all bids received.

5. Public Opening of Sealed Bids (7/16)

If conditions permit, the sealed bids will be publicly opened and posted at the time and place set in the prospectus.

If a bidder, present at a bid opening, has submitted bids on more than one sale, that bidder may withdraw their unopened bid envelopes or announce the withdrawal of their online bid after being declared the successful bidder on one sale.

6. Award of Contract (1/11)

Award of the contract will be made to the Bidder whose bid, conforming to the prospectus, is most advantageous to the State of Michigan on the basis of total value at rates bid for the estimated quantities. The State reserves the right to reject any bid or waive any minor irregularity in bids received. A written award mailed (or otherwise furnished) to the successful Bidder shall be deemed to result in a binding contract without further action by either party.

7. Down Payment (1/11)

The Bidder to whom award is made must make a down payment within 21 days of the sale award. The amount of the down payment will be calculated as shown in the Bond and Payment Schedule of this prospectus. Only cash may be used to meet this requirement.

8. Performance Security (1/11)

As guarantee of faithful performance, a cash bond, certificate of deposit, surety bond or irrevocable letter of credit (LOC) is required within 21 days of the sale award. The amount of the performance security is shown in the Bond and

Payment Schedule of this prospectus. If an LOC or surety is used, the coverage must extend for at least 6 months beyond the contract expiration.

#### 9. Timber Sale Contract (9/14)

Additional conditions and requirements common to all timber sales are listed on the timber sale contract (R4031) and are available on line at [www.michigan.gov/timber](http://www.michigan.gov/timber). Contact the Unit Manager for additional information or a sample contract. Within 21 days of the date of the award letter, the bidder must sign the contract and provide the required down payment, performance security, and verification of worker's disability compensation. The down payment and performance security shall be in accordance with the provisions of the timber sale contract, in the sums stated in this prospectus. If these actions are not taken, then the Bidder, the Bidder's corporation, and the corporation's principals may not be permitted to bid on State timber sales for a period of 1 year. In addition, the Bidder certifies that if awarded this contract, the Bidder will complete the timber sale contract in accordance with its terms and any modifications thereof including requirements to purchase, cut, and remove the included timber by the expiration date.

#### 10. Disclaimer of Estimates and Bidder's Warranty of Inspection (7/16)

Before submitting this bid, the Bidder is advised and cautioned to inspect the sale area, review the requirements of the sale contract, and take other steps as may be reasonably necessary to ascertain the location, estimated volumes, construction estimates, and operating costs of the proposed sale. Failure to do so will not relieve the Bidder from responsibility for completing the contract.

The Bidder warrants that this bid is submitted solely on the basis of the Bidder's examination and inspection of the quality and quantity of the timber offered for sale and the Bidder's opinion of the value thereof and the costs of recovery. No reliance should be placed on the State of Michigan's estimates of timber quality, quantity or costs of recovery. Bidder further acknowledges that the State of Michigan: (i) expressly disclaims any warranty of fitness of timber for any purpose; (ii) offers this timber as is without any warranty of quality (merchantability) or quantity and (iii) expressly disclaims any warranty as to the quantity or quality of timber sold.

#### 11. Certification and Chain-of-Custody (10/14)

Unless otherwise indicated in the contract under section 7 – Other Conditions of the Sale Specific Conditions & Requirements, the area encompassed by this timber sale is certified to the standards of the Forest Stewardship Council (FSC) - Certificate #SCS-FM/COC-00090N and the Sustainable Forestry Initiative (SFI) - Certificate #NSF-SFIS-5Y031-SF5. Forest products from this sale may be delivered to the mill as "FSC 100% and / or SFI certified" as long as the contractor hauling the forest products is chain-of-custody (COC) certified or covered under a COC certificate from the destination mill. The purchaser is responsible for maintaining COC after leaving the sale area.

#### 12. Good Neighbor Authority (GNA) Requirements (7/16)

If the name of this timber sales contains the acronym GNA, it is authorized by the Good Neighbor Authority (GNA) and covered by various agreements between the U.S. Forest Service and the State. The timber sale occurs on federal land and the following conditions apply:

GNA contracts on US Forest Service land will not be awarded to purchasers on the Federal list of excluded parties. The System for Award Management (SAM) will be checked for active excluded parties prior to award of contract. In addition, the Bidder to whom award is made must complete an Assurance Regarding Felony Conviction or Tax Delinquent Status for Corporate Applicants (AD-3031).

#### 13. Good Neighbor Authority (GNA) Requirements, con't (9/16)

Bidder certifies, by signing this bid form, that to the best of Bidder's knowledge that the following representations are accurate and complete.

- a. That the Bidder and its principals are not presently debarred, suspended, proposed for debarment, declared ineligible, or voluntary excluded from timber sales (covered transactions) by any Federal department or agency.
- b. That the Bidder and its principals have not within a 3-year period preceding this bid been convicted of or had a civil judgment rendered against them for commission of fraud or a criminal offense in connection with obtaining, attempting to obtain, or performing a public (Federal, State, or local) transaction or contract under a public transaction; violation of Federal or State antitrust statutes or commission of embezzlement, theft, forgery, bribery, falsification or destruction of records, making false statements, or receiving stolen property.

c. That the Bidder and its principals are not presently indicted for or otherwise criminally or civilly charged by a governmental entity (Federal, State, or local) with commission of any of the offenses enumerated in paragraph b of this certification.

d. That the Bidder and its principals have not within a 3-year period preceding this bid had one or more public transactions (Federal, State, or local) terminated for breach or default of a timber or forest product contract.

Bidders that cannot certify this requirement, in whole or in part, shall submit an explanation with their bid.

KEITH CREAGH

Director

# TIMBER SALE INFORMATION

East of Rapid (33-002-16)

Delta County (Advertised Price \$43,073.50)

SALE NOTE: The best access into units 4, 5, 6, 7, and 8 is through private property to the south. A winter road will be required off the Engineer road if access through private property is not obtained. Contact the Escanaba Forest Resources Office for landowner contact information.

A timber sale contract for this lump sum, sealed bid timber sale will be awarded to the responsible bidder offering the highest sealed bid price. Bids must be at or above the following advertised price for each species:

<u>PRODUCTS &amp; SPECIES</u>	<u>ESTIMATED UNITS*</u>	<u>ADVERTISED PRICE</u>
Sawtimber		
Paper Birch	1.00 MBF	\$ 113.00 / MBF
Red Maple	21.10 MBF	\$ 237.00 / MBF
Sugar Maple	8.20 MBF	\$ 414.00 / MBF
Yellow Birch	1.30 MBF	\$ 83.00 / MBF
Pulpwood		
Balsam Fir	119.00 Cords	\$ 28.45 / Cord
Mixed Hardwood	582.00 Cords	\$ 35.90 / Cord
Mixed Spruce	99.00 Cords	\$ 26.00 / Cord
N. White Cedar	20.00 Cords	\$ 35.15 / Cord
Quaking Aspen	143.00 Cords	\$ 35.40 / Cord
Tamarack	103.00 Cords	\$ 17.85 / Cord

\* The total volume is statistically estimated within plus (+) or minus (-) 14.53 percent. The estimated units are final and not subject to adjustment. Prospective bidders are urged to examine this timber and to make their own estimates of quantity and quality.

## **BOND AND PAYMENT SCHEDULE:**

1. A bond in the amount of \$2,154.00 to insure faithful performance of the conditions of the contract will be deposited by the successful bidder within 21 days of the sale award.
2. Cutting in any sale or unit without the required advance payment would be considered a trespass.
3. Total payment must be paid in advance or according to the following schedule:
  - (a) Ten percent (10%) of the sale value must be paid within 21 days of the sale award.
  - (b) The 10% down payment will be credited towards the first unit cut.
4. If no cutting takes place, the 10% down payment will not be refunded.
5. Operations on the contract issued will terminate on 09/30/2019.

**Description of Timber by Payment Unit (PU)**

PU	MARKET GROUP	PRODUCT	QUANTITY	UNIT	ACRES	ADVERTISE PRICE
1	Red Maple	Sawtimber	3.2	MBF	25.2	\$9,502.40
	Balsam Fir	Pulpwood	71.0	Cords		
	Mixed Hardwood		72.0	Cords		
	<i>Balsam Poplar</i>		20.0	<i>Cords</i>		
	<i>Black Ash</i>		27.0	<i>Cords</i>		
	<i>Paper Birch</i>		7.0	<i>Cords</i>		
	<i>Red Maple</i>		18.0	<i>Cords</i>		
	Mixed Spruce		77.0	Cords		
	<i>Black Spruce</i>		38.0	<i>Cords</i>		
	<i>White Spruce</i>		39.0	<i>Cords</i>		
	N. White Cedar		7.0	Cords		
	Quaking Aspen		3.0	Cords		
	Tamarack		100.0	Cords		
	2	Paper Birch	Sawtimber	1.0		
Red Maple			0.7	MBF		
Balsam Fir		Pulpwood	17.0	Cords		
Mixed Hardwood			67.0	Cords		
<i>Balsam Poplar</i>			14.0	<i>Cords</i>		
<i>Black Ash</i>			20.0	<i>Cords</i>		
<i>Paper Birch</i>			2.0	<i>Cords</i>		
<i>Red Maple</i>			28.0	<i>Cords</i>		
<i>Yellow Birch</i>			3.0	<i>Cords</i>		
Mixed Spruce			15.0	Cords		
<i>White Spruce</i>			15.0	<i>Cords</i>		
N. White Cedar			2.0	Cords		
Quaking Aspen			22.0	Cords		
Tamarack			3.0	Cords		
3	Red Maple	Sawtimber	1.2	MBF	4.6	\$1,469.10
	Mixed Hardwood	Pulpwood	33.0	Cords		
	<i>Red Maple</i>		32.0	<i>Cords</i>		
	<i>Sugar Maple</i>		1.0	<i>Cords</i>		
4	Red Maple	Sawtimber	1.8	MBF	9.3	\$5,644.80
	Sugar Maple		4.8	MBF		
	Mixed Hardwood	Pulpwood	90.0	Cords		
	<i>Red Maple</i>		42.0	<i>Cords</i>		
	<i>Sugar Maple</i>		48.0	<i>Cords</i>		
5	Red Maple	Sawtimber	6.4	MBF	8.7	\$8,657.85
	Yellow Birch		1.3	MBF		
	Balsam Fir	Pulpwood	18.0	Cords		
	Mixed Hardwood		150.0	Cords		
	<i>Balsam Poplar</i>		21.0	<i>Cords</i>		
	<i>Black Ash</i>		22.0	<i>Cords</i>		
	<i>Red Maple</i>		88.0	<i>Cords</i>		
	<i>Sugar Maple</i>		5.0	<i>Cords</i>		
	<i>Yellow Birch</i>		14.0	<i>Cords</i>		
	Mixed Spruce		7.0	Cords		
	<i>White Spruce</i>		7.0	<i>Cords</i>		
	N. White Cedar		7.0	Cords		
	Quaking Aspen		20.0	Cords		
6	Red Maple	Sawtimber	7.8	MBF	6.2	\$9,171.95
	Balsam Fir	Pulpwood	13.0	Cords		
	Mixed Hardwood		103.0	Cords		
	<i>Black Ash</i>		2.0	<i>Cords</i>		
	<i>Red Maple</i>		86.0	<i>Cords</i>		
	<i>Sugar Maple</i>		7.0	<i>Cords</i>		
	<i>Yellow Birch</i>		8.0	<i>Cords</i>		

**Description of Timber by Payment Unit (PU), con't**

PU	MARKET GROUP	PRODUCT	QUANTITY	UNIT	ACRES	ADVERTISE PRICE
6 con't	N. White Cedar Quaking Aspen	Pulpwood	4.0	Cords		
			88.0	Cords		
7	Sugar Maple	Sawtimber	0.7	MBF	3.7	\$1,223.20
	Mixed Hardwood	Pulpwood	26.0	Cords		
	<i>Sugar Maple</i>		26.0	<i>Cords</i>		
8	Sugar Maple	Sawtimber	2.7	MBF	6.4	\$2,943.70
	Mixed Hardwood	Pulpwood	41.0	Cords		
	<i>Black Ash</i>		2.0	<i>Cords</i>		
	<i>Red Maple</i>		12.0	<i>Cords</i>		
	<i>Sugar Maple</i>		27.0	<i>Cords</i>		
	Quaking Aspen		10.0	Cords		
TOTAL:			31.6	MBF		
TOTAL:			1,066.0	Cords		

## Sale Specific Conditions & Requirements

**Sale Name: East of Rapid**

**Sale Number: 33-002-16 Seq#: 1**

### 1 - Sale Area

#### 1.2 - Boundaries

##### 1.2.1 - Painted boundaries (1/14)

The sale boundary and Payment Unit boundaries are marked and identified by blue, red and yellow paint. Exterior sale boundary lines against private property are marked with blue paint. Exterior sale boundary lines against state are marked with red paint. Interior Payment Unit boundaries are marked with yellow paint. The painted boundary line trees are not Included Timber and are to be protected unless marked with orange paint. Yellow painted trees designating an interior Payment Unit boundary are only to be cut when all surrounding Payment Units have been paid.

### 2 - Timber Specifications

#### 2.1 - Included Timber

##### 2.1.2 - Clearcut unit(s) w/o unmerchantable trees (8/11)

Within Payment Unit(s) 1, 2, 5, and 6, cut all trees which meet minimum piece specifications in 2.2 Utilization with the following exception: Within Payment Unit 1, do not cut any trees marked with green paint.

##### 2.1.3 - Cut tree marked unit(s) (12/08)

Within Payment Unit(s) 3, 4, 7, and 8, all trees are designated for cutting when marked with orange paint above and below stump height, regardless of merchantability.

### 3 - Payments

#### 3.4 - Damaged Timber

##### 3.4.1 - Damaged timber (6/14)

General Condition and Requirement 3.4 Damaged Timber, defines liquidated damages for undesignated live merchantable trees which are cut or injured. In addition, extreme care should be taken to avoid damage to tree seedlings and saplings.

Within Payment Unit 5, if more than 25% of the tree seedlings or saplings (1/4" to 4.5" DBH) within a specified portion of the unit sale area are damaged, liquidated damages will be assessed at 100 dollars per acre for all acreage within that specified portion of the sale area that was damaged.

### 4 - Transportation

#### 4.1 - Construction

##### 4.1.6 - Road construction (1/09)

Construction of new roads or improvements of existing roads shall be done in such a way as to minimize the environmental and visual impacts. Merchantable trees shall be cut and utilized unless otherwise directed. Non-merchantable trees shall be severed and laid flat on the ground. Slash shall be scattered, and not left in windrows and kept a minimum of 10 feet back from the road edge. Stumps shall be set upright, not left on edge, and be moved at least 10 feet away from the road edge. Disturbed soil shall be feathered into the woods and not left in berms or windrows.

##### 4.1.7 - Road closure (10/11)

All new roads built into the sale must be blocked to vehicle traffic upon completion of the sale. In general, this will require constructing a four (4') foot high berm of stumps and logs covered with earth. Contact the sale administrator for specific details of design and placement.

#### 4.2 - Maintenance

##### 4.2.2 - Fill material (4/07)

To maintain roads, fill material may be needed in areas where "holes" exist or may be expected to develop. This fill material should be placed before trucking begins. Contact the sale administrator regarding the availability of onsite sand or gravel from adjacent State-owned lands.



#### 4.2.4 - Grading (12/14)

For completion of the sale, state forest roads must be graded. In general, this will require a road grader or bull dozer to shape up the roads after forest products have been hauled off site. This includes cleaning of drainage areas, grading, crowning and filling with gravel, if necessary. The grading equipment to be used must be approved by the Unit Manager or his/her representative.

#### 4.4 - Access

##### 4.4.1 - Private property access (3/11)

Permission for access across private land is the responsibility of the Purchaser. Contact the Escanaba Forest Resources Office for landowner contact information. If access through private property is not obtained a winter skid road potential haul road off the Engineer Rd. will be required.

### 5 - Operations

#### 5.1 - Notification

##### 5.1.1 - Pre-sale conference (10/11)

A pre-sale conference between the Purchaser and sale administrator is required prior to beginning any operations to determine landing and road locations. The Unit Manager or his/her representative must be contacted at least 5 days in advance to schedule the conference.

##### 5.1.4 - Post-sale conference (6/11)

A post-sale conference on site between the Purchaser and sale administrator is required 5 days prior to the completion of active logging operations to determine clean-up and repair of landings, road edges, and the fulfillment of other contract specifications.

#### 5.2 - Conduct of Operations

##### 5.2.2 - Hazard Trees/Snags

###### 5.2.2.1 - Den trees (2/04)

Obvious hollow and/or den trees shall be protected and left standing unless they are a safety hazard.

##### 5.2.3 - Operating Restrictions

###### 5.2.3.1 - Operating restrictions (9/11)

Within Payment Unit(s) 1, 4, 5, 6, 7, and 8, unless changed by written agreement, cutting, skidding, and hauling are limited to the period of 12/01 to 03/31 or frozen ground conditions. If the access is obtained through private property to the south within Payment Units 4, 5, 6, 7, and 8, this restriction does not apply to these units and will not require a written agreement. This restriction is because the access through state land into these units is low and wet.

###### 5.2.3.3 - Bark slippage restriction (3/09)

Within Payment Unit(s) 4, 7, and 8, unless changed by written agreement, cutting and skidding are not permitted during the period of April 15 to July 15. This restriction is because of bark slippage.

##### 5.2.22 - Operating Caution

###### 5.2.22.1 - Operating caution (6/11)

It is recommended, but not required, that within Payment Unit(s) 2 and 3, cutting, skidding, and hauling occur during dry summer or frozen winter conditions. The reason for the recommendation is because access to these units is through wet ground.

### 7 - Other Conditions

#### 7.3 - Contract Modifications

##### 7.3.1 - Emerald Ash Borer

###### 7.3.1.2 - Emerald ash borer, ash or firewood on sale (2/05)

There is ash and/or "firewood" in this sale and it is located within an emerald ash borer quarantined area. The Director of the Michigan Department of Agriculture (MDA) by the authority of Act No. 72 of the Public Acts of 1945, as amended,

and Quarantine Regulation No. 620, has promulgated this quarantine to prevent the further spread of this pest and sets forth: definitions, regulated articles, regulated areas, conditions of movement, violations and penalties, and special exemptions. The Purchaser must comply with this quarantine. Contact the MDA for further information.



# TIMBER SALE MAP

This information provided by authority of Part 525, 1994 PA 451, as amended.

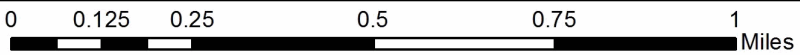
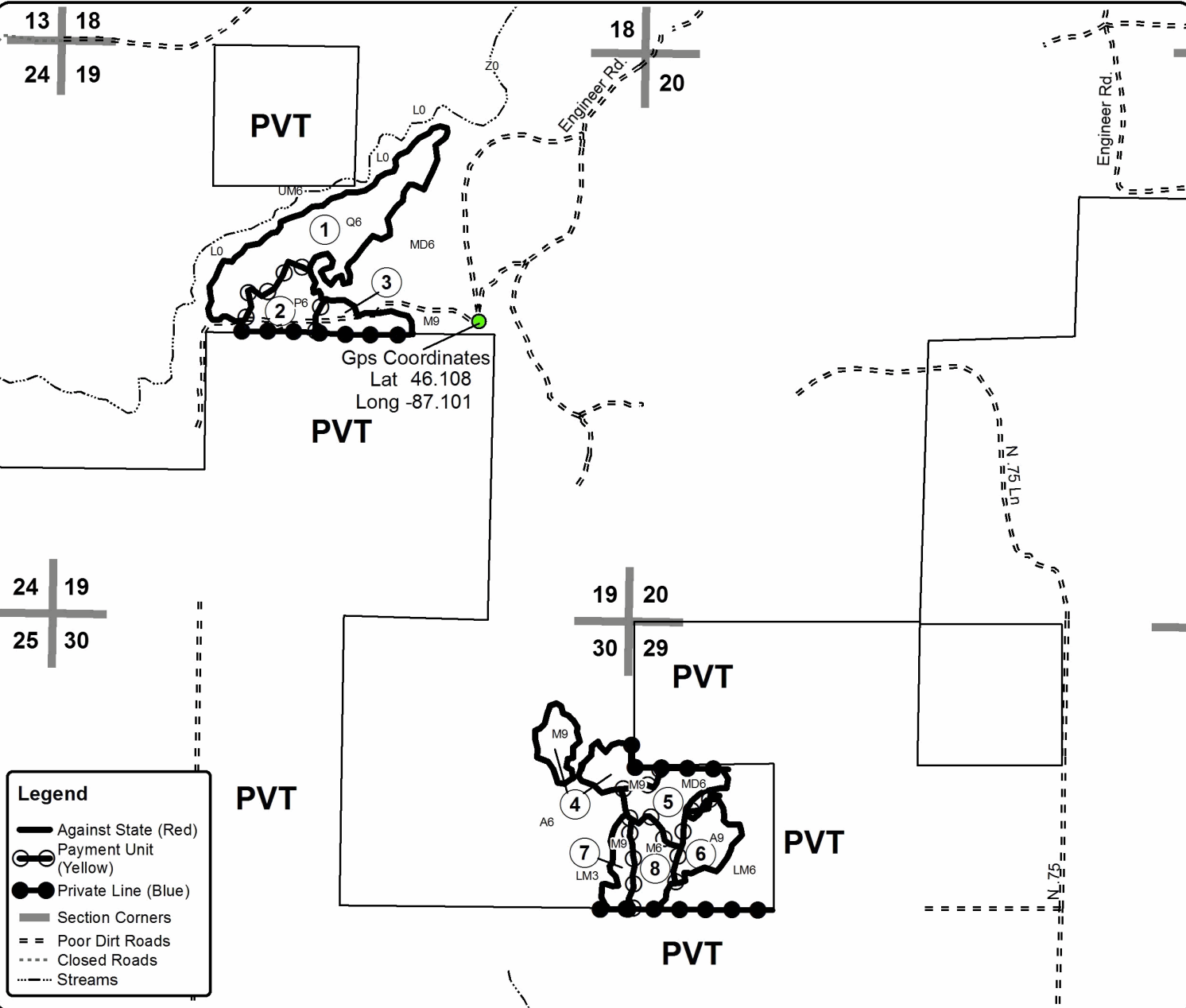
Sale Number 33-002-16-01	Year 16
-----------------------------	------------

Forest Management Unit Escanaba	County Delta	Mapped By Racine	Date 09/25/2016	Page 1	of 1
Township 43N	Range 22W	Section(s) and Subdivision(s) 19) NWNE, SWNE, SENW 29) SWNW 30) NENE, SENE	Scale 1:15,840		

Cover Type				Density			
A = Aspen	H = Hemlock	N = Marsh	U = Upland Brush	0 = Non Stocked	5 = Pole Timber Medium		
B = Paper Birch	J = Jack Pine	O = Oak	UM = Upland Mixed	1 = Seedling Sapling Poor	6 = Pole Timber Well		
C = Cedar	L = Lowland Brush	P = Lowland Poplar	V = Bog or Marsh	2 = Seedling Sapling Medium	7 = Saw Timber Poor		
D = Treed Bog	LM = Lowland Mixed	Q = Mixed Swamp Conifer	W = White Pine	3 = Seedling Sapling Well	8 = Saw Timber Medium		
E = Swamp Hdwoods	M = Mpl, Bch, Brch	R = Red Pine	X = Non Stocked	4 = Pole Timber Poor	9 = Saw Timber Well		
F = Spruce Fir	MC = Mixed Conifer	S = Black Spruce	Z = Water				
G = Grass	MD = Mixed Deciduous	T = Tamarack					

PU	Acres	PU	Acres	PU	Acres
1	25.2	4	9.3	7	3.7
2	7.1	5	8.7	8	6.4
3	4.6	6	6.2		

**East of Rapid**  
**Compartment 99, 98**  
**71.2 Acres**





TIMBER SALE INFORMATION

North and West of Rapid (33-008-16)

Delta County (Advertised Price \$13,761.60)

SALE NOTE: Sale access is in winter months due to landowner requirements. Contact the Escanaba Forest Management Unit Office for landowner contact information.

Access may be through private land.

A timber sale contract for this lump sum, sealed bid timber sale will be awarded to the responsible bidder offering the highest sealed bid price. Bids must be at or above the following advertised price for each species:

<u>PRODUCTS &amp; SPECIES</u>	<u>ESTIMATED UNITS*</u>	<u>ADVERTISED PRICE</u>
Sawtimber		
Green Ash	0.80 MBF	\$ 91.00 / MBF
Paper Birch	0.50 MBF	\$ 98.00 / MBF
Red Maple	6.90 MBF	\$ 206.00 / MBF
Pulpwood		
Balsam Fir	58.00 Cords	\$ 24.65 / Cord
Mixed Hardwood	326.00 Cords	\$ 31.10 / Cord
Mixed Spruce	22.00 Cords	\$ 22.55 / Cord
Quaking Aspen	2.00 Cords	\$ 30.65 / Cord
Tamarack	6.00 Cords	\$ 15.45 / Cord

\* The total volume is statistically estimated within plus (+) or minus (-) 19.10 percent. The estimated units are final and not subject to adjustment. Prospective bidders are urged to examine this timber and to make their own estimates of quantity and quality.

**BOND AND PAYMENT SCHEDULE:**

1. A bond in the amount of \$688.00 to insure faithful performance of the conditions of the contract will be deposited by the successful bidder within 21 days of the sale award.
2. Cutting in any sale or unit without the required advance payment would be considered a trespass.
3. Total payment must be paid in advance or according to the following schedule:
  - (a) Ten percent (10%) of the sale value must be paid within 21 days of the sale award.
  - (b) The 10% down payment will be credited towards the first unit cut.
4. If no cutting takes place, the 10% down payment will not be refunded.
5. Operations on the contract issued will terminate on 03/31/2019.

**Description of Timber by Payment Unit (PU)**

PU	MARKET GROUP	PRODUCT	QUANTITY	UNIT	ACRES	ADVERTISE PRICE
1	Red Maple	Sawtimber	0.9	MBF	17.5	\$6,003.85
	Balsam Fir	Pulpwood	32.0	Cords		
	Mixed Hardwood		161.0	Cords		
	<i>Black Ash</i>		2.0	<i>Cords</i>		
	<i>Red Maple</i>		158.0	<i>Cords</i>		
	<i>Sugar Maple</i>		1.0	<i>Cords</i>		
	Mixed Spruce		1.0	Cords		
	<i>White Spruce</i>		1.0	<i>Cords</i>		
	2	Green Ash	Sawtimber	0.8		
Red Maple			2.1	MBF		
Balsam Fir		Pulpwood	18.0	Cords		
Mixed Hardwood			125.0	Cords		
<i>Balsam Poplar</i>			14.0	<i>Cords</i>		
<i>Black Ash</i>			25.0	<i>Cords</i>		
<i>Green Ash</i>			2.0	<i>Cords</i>		
<i>Red Maple</i>			75.0	<i>Cords</i>		
<i>Sugar Maple</i>			3.0	<i>Cords</i>		
<i>Yellow Birch</i>			6.0	<i>Cords</i>		
Mixed Spruce			11.0	Cords		
<i>Black Spruce</i>			7.0	<i>Cords</i>		
<i>White Spruce</i>			4.0	<i>Cords</i>		
Tamarack			4.0	Cords		
3		Paper Birch	Sawtimber	0.5	MBF	2.8
	Red Maple		3.9	MBF		
	Balsam Fir	Pulpwood	8.0	Cords		
	Mixed Hardwood		40.0	Cords		
	<i>Paper Birch</i>		1.0	<i>Cords</i>		
	<i>Red Maple</i>		37.0	<i>Cords</i>		
	<i>Yellow Birch</i>		2.0	<i>Cords</i>		
	Mixed Spruce		10.0	Cords		
	<i>White Spruce</i>		10.0	<i>Cords</i>		
	Quaking Aspen		2.0	Cords		
	Tamarack		2.0	Cords		
TOTAL:			8.2	MBF		
TOTAL:			414.0	Cords		

## Sale Specific Conditions & Requirements

**Sale Name: North and West of Rapid**

**Sale Number: 33-008-16 Seq#: 1**

### 1 - Sale Area

#### 1.2 - Boundaries

##### 1.2.1 - Painted boundaries (1/14)

The sale boundary and Payment Unit boundaries are marked and identified by blue and red paint. Exterior sale boundary lines against private property are marked with blue paint. Exterior sale boundary lines against state are marked with red paint. Interior Payment Unit boundaries are marked with red paint. Red painted trees designating an interior Payment Unit boundary are only to be cut when all surrounding Payment Units have been paid.

### 2 - Timber Specifications

#### 2.1 - Included Timber

##### 2.1.4 - Species designation unit(s) (12/08)

Within Payment Unit(s) 1, all aspen, balsam, spruce, fir, and ash are designated for cutting which meet minimum piece specifications in 2.2 - Utilization. In addition, maple less than 12 inches (DBH) diameter at breast height are designated for cutting which meet minimum piece specifications in 2.2 - Utilization. The 12 inch DBH is equivalent to a 13.5 inch stump diameter measured at 12 inches above ground level for timber sale inspection purposes.

##### 2.1.7 - Leave tree marked unit(s) (6/14)

Within Payment Unit(s) 2 and 3, all trees, which meet minimum piece specifications in 2.2 Utilization, are designated for cutting except cedar, hemlock and trees marked with green paint above and below stump height.

### 3 - Payments

#### 3.4 - Damaged Timber

##### 3.4.1 - Damaged timber (6/14)

General Condition and Requirement 3.4 Damaged Timber, defines liquidated damages for undesignated live merchantable trees which are cut or injured. In addition, extreme care should be taken to avoid damage to tree seedlings and saplings.

Within the sale area, if more than 25% of the tree seedlings or saplings (1/4" to 4.5" DBH) within a specified portion of the sale area are damaged, liquidated damages will be assessed at \$100 dollars per acre for all acreage within that specified portion of the sale area that was damaged.

### 4 - Transportation

#### 4.1 - Construction

##### 4.1.6 - Road construction (1/09)

Construction of new roads or improvements of existing roads shall be done in such a way as to minimize the environmental and visual impacts. Merchantable trees shall be cut and utilized unless otherwise directed. Non-merchantable trees shall be severed and laid flat on the ground. Slash shall be scattered, and not left in windrows and kept a minimum of 10 feet back from the road edge. Stumps shall be set upright, not left on edge, and be moved at least 10 feet away from the road edge. Disturbed soil shall be feathered into the woods and not left in berms or windrows.

#### 4.2 - Maintenance

##### 4.2.2 - Fill material (4/07)

To maintain roads, fill material may be needed in areas where "holes" exist or may be expected to develop. This fill material should be placed before trucking begins. Contact the sale administrator regarding the availability of onsite sand or gravel from adjacent State-owned lands.

##### 4.2.4 - Grading (12/14)

For completion of the sale, state forest roads must be graded. In general, this will require a road grader or bull dozer to shape up the roads after forest products have been hauled off site. This includes cleaning of drainage areas, grading, crowning and

filling with gravel, if necessary. The grading equipment to be used must be approved by the Unit Manager or his/her representative.

#### 4.4 - Access

##### 4.4.1 - Private property access (3/11)

Permission for access across private land is the responsibility of the Purchaser. Contact the Escanaba Forest Resources Division Office for landowner contact information.

### 5 - Operations

#### 5.1 - Notification

##### 5.1.1 - Pre-sale conference (10/11)

A pre-sale conference between the Purchaser and sale administrator is required prior to beginning any operations. The Unit Manager or his/her representative must be contacted at least 5 days in advance to schedule the conference.

##### 5.1.4 - Post-sale conference (6/11)

A post-sale conference on site between the Purchaser and sale administrator is required 5 days prior to the completion of active logging operations to determine clean-up and repair of landings, road edges, and the fulfillment of other contract specifications.

#### 5.2 - Conduct of Operations

##### 5.2.2 - Hazard Trees/Snags

###### 5.2.2.1 - Den trees (2/04)

Obvious hollow and/or den trees shall be protected and left standing unless they are a safety hazard.

##### 5.2.3 - Operating Restrictions

###### 5.2.3.1 - Operating restrictions (9/11)

Within Payment Unit(s) 1, 2, and 3, unless changed by written agreement, cutting, skidding, and hauling are limited to the period of 12/01 to 03/31 frozen ground conditions. This restriction is because the access through private property requires winter month operations only.

#### 5.4 - Soil Protection

##### 5.4.1 - Rutting restriction, general (7/16)

Operations are to cease immediately if equipment and weather conditions result in rutting of roads and/or skid trails which is 12 inches or greater in depth and 50 feet in length. The Unit Manager or his/her representative may restrict hauling and/or skidding if ruts exceed the specified depth. With the Unit Manager or his/her representative's approval, the Purchaser may return to the area when the risk of rutting has decreased.

### 7 - Other Conditions

#### 7.3 - Contract Modifications

##### 7.3.1 - Emerald Ash Borer

###### 7.3.1.2 - Emerald ash borer, ash or firewood on sale (2/05)

There is ash and/or "firewood" in this sale and it is located within an emerald ash borer quarantined area. The Director of the Michigan Department of Agriculture (MDA) by the authority of Act No. 72 of the Public Acts of 1945, as amended, and Quarantine Regulation No. 620, has promulgated this quarantine to prevent the further spread of this pest and sets forth: definitions, regulated articles, regulated areas, conditions of movement, violations and penalties, and special exemptions. The Purchaser must comply with this quarantine. Contact the MDA for further information.





# TIMBER SALE MAP

This information provided by authority of Part 525, 1994 PA 451, as amended.

Forest Management Unit Escanaba	County Delta	Mapped By Racine	Date 9/22/2016	Page 1	of 1
Township 43N	Range 22W, 23W	Section(s) and Subdivision(s) 43N 22W 19)SWNW SENW NWSW 43N 23W 24)SENE NESE	Scale 1:15,840		

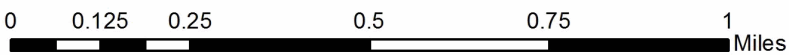
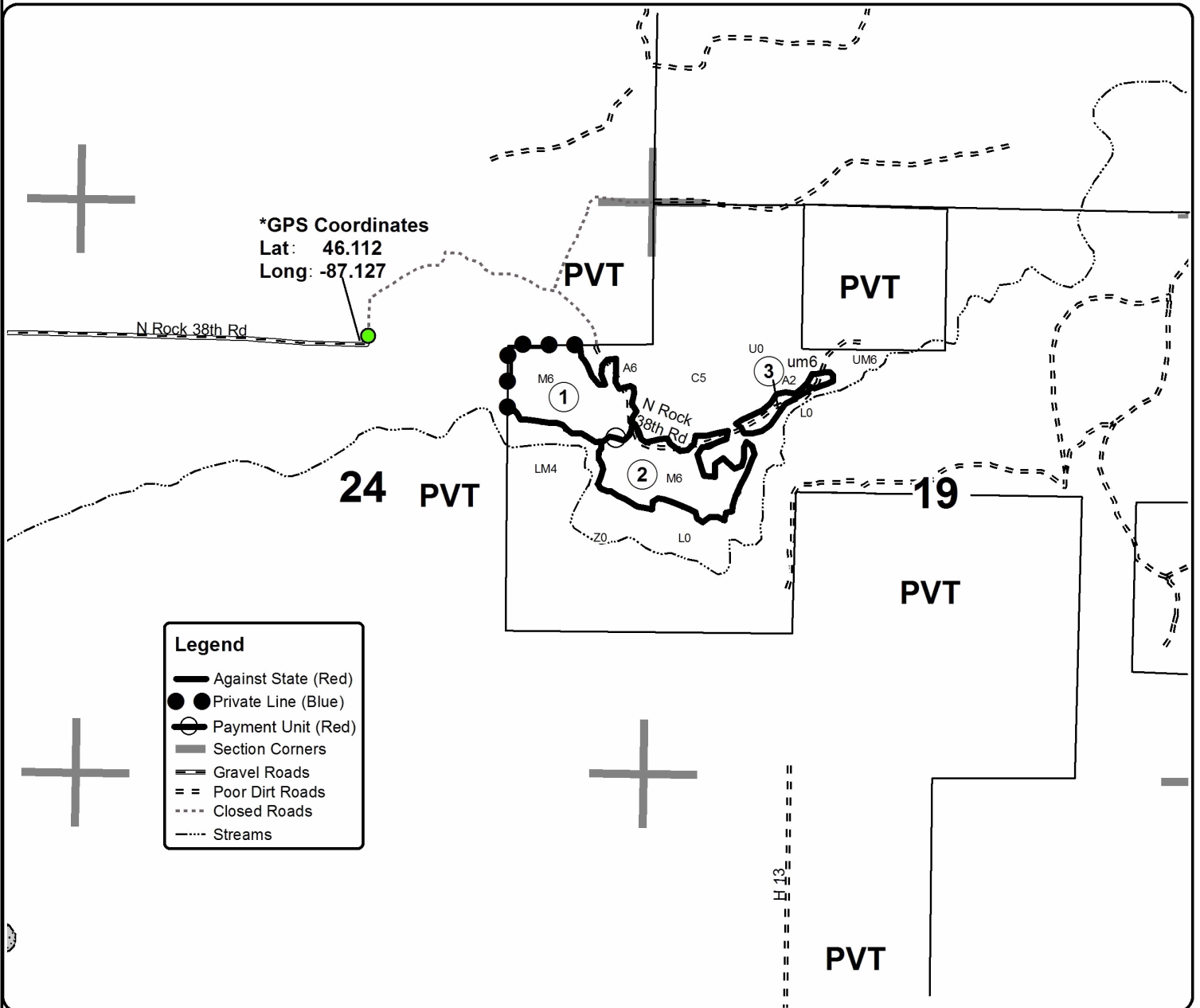
Cover Type				Density	
A = Aspen	H = Hemlock	N = Marsh	U = Upland Brush	0 = Non Stocked	5 = Pole Timber Medium
B = Paper Birch	J = Jack Pine	O = Oak	UM = Upland Mixed	1 = Seedling Sapling Poor	6 = Pole Timber Well
C = Cedar	L = Lowland Brush	P = Lowland Poplar	V = Bog or Marsh	2 = Seedling Sapling Medium	7 = Saw Timber Poor
D = Treed Bog	LM = Lowland Mixed	Q = Mixed Swamp Conifer	W = White Pine	3 = Seedling Sapling Well	8 = Saw Timber Medium
E = Swamp Hdwoods	M = Mpl, Bch, Brch	R = Red Pine	X = Non Stocked	4 = Pole Timber Poor	9 = Saw Timber Well
F = Spruce Fir	MC = Mixed Conifer	S = Black Spruce	Z = Water		
G = Grass	MD = Mixed Deciduous	T = Tamarack			

PU	Acres
1	17.5
2	16.4
3	2.8

## North and West of Rapid

### Compartment 99

36.7 Acres





# TIMBER SALE INFORMATION

## Pine Trail (33-009-16)

Delta County (Advertised Price \$433,173.65)

SALE NOTE: A pre sale conference prior to cutting in any unit will be required with the sale administrator to lay out crossing locations along the Days River pathway. Note: the red pine pulpwood volumes include red pine sawlogs.

A recreation site such as a trail, pathway, or campground is within the sale area or the vicinity. Certain restrictions/specifications may be applicable including time restrictions.

A timber sale contract for this lump sum, sealed bid timber sale will be awarded to the responsible bidder offering the highest sealed bid price. Bids must be at or above the following advertised price for each species:

<u>PRODUCTS &amp; SPECIES</u>	<u>ESTIMATED UNITS*</u>	<u>ADVERTISED PRICE</u>
Sawtimber		
Paper Birch	2.00 MBF	\$ 113.00 / MBF
Red Maple	0.50 MBF	\$ 237.00 / MBF
Pulpwood		
Balsam Fir	49.00 Cords	\$ 28.45 / Cord
Jack Pine	7.00 Cords	\$ 48.50 / Cord
Mixed Hardwood	43.00 Cords	\$ 35.90 / Cord
Mixed Spruce	378.00 Cords	\$ 26.00 / Cord
N. White Cedar	106.00 Cords	\$ 35.15 / Cord
Quaking Aspen	70.00 Cords	\$ 35.40 / Cord
Red Pine	5,330.00 Cords	\$ 77.55 / Cord
Tamarack	10.00 Cords	\$ 17.85 / Cord

\* The total volume is statistically estimated within plus (+) or minus (-) 12.12 percent. The estimated units are final and not subject to adjustment. Prospective bidders are urged to examine this timber and to make their own estimates of quantity and quality.

### **BOND AND PAYMENT SCHEDULE:**

1. A bond in the amount of \$21,659.00 to insure faithful performance of the conditions of the contract will be deposited by the successful bidder within 21 days of the sale award.
2. Cutting in any sale or unit without the required advance payment would be considered a trespass.
3. Total payment must be paid in advance or according to the following schedule:
  - (a) Ten percent (10%) of the sale value must be paid within 21 days of the sale award.
  - (b) The 10% down payment will be credited towards the first unit cut.
4. If no cutting takes place, the 10% down payment will not be refunded.
5. Operations on the contract issued will terminate on 12/31/2019.

**Description of Timber by Payment Unit (PU)**

PU	MARKET GROUP	PRODUCT	QUANTITY	UNIT	ACRES	ADVERTISE PRICE
1	Red Pine	Pulpwood	1,444.0	Cords	31.9	\$111,982.20
2	Red Pine	Pulpwood	838.0	Cords	65.9	\$64,986.90
3	Paper Birch	Sawtimber	0.5	MBF	7.9	\$9,699.45
	Red Maple		0.5	MBF		
	Balsam Fir	Pulpwood	29.0	Cords		
	Mixed Hardwood		15.0	Cords		
	<i>Paper Birch</i>		5.0	<i>Cords</i>		
	<i>Red Maple</i>		10.0	<i>Cords</i>		
	Mixed Spruce		21.0	Cords		
	<i>Black Spruce</i>		3.0	<i>Cords</i>		
	<i>White Spruce</i>		18.0	<i>Cords</i>		
	Quaking Aspen		53.0	Cords		
	Red Pine		74.0	Cords		
4	Paper Birch	Sawtimber	1.5	MBF	15.4	\$15,268.95
	Balsam Fir	Pulpwood	20.0	Cords		
	Mixed Hardwood		28.0	Cords		
	<i>Balsam Poplar</i>		3.0	<i>Cords</i>		
	<i>Paper Birch</i>		13.0	<i>Cords</i>		
	<i>Red Maple</i>		9.0	<i>Cords</i>		
	<i>Yellow Birch</i>		3.0	<i>Cords</i>		
	Mixed Spruce		357.0	Cords		
	<i>Black Spruce</i>		357.0	<i>Cords</i>		
	N. White Cedar		106.0	Cords		
	Quaking Aspen		3.0	Cords		
	Red Pine		3.0	Cords		
	Tamarack		10.0	Cords		
5	Red Pine	Pulpwood	696.0	Cords	54.7	\$53,974.80
6	Jack Pine	Pulpwood	1.0	Cords	22.0	\$17,610.20
	Quaking Aspen		1.0	Cords		
	Red Pine		226.0	Cords		
7	Jack Pine	Pulpwood	1.0	Cords	41.9	\$33,501.20
	Quaking Aspen		3.0	Cords		
	Red Pine		430.0	Cords		
8	Jack Pine	Pulpwood	1.0	Cords	35.0	\$27,959.75
	Quaking Aspen		2.0	Cords		
	Red Pine		359.0	Cords		
9	Jack Pine	Pulpwood	1.0	Cords	39.0	\$31,174.70
	Quaking Aspen		3.0	Cords		
	Red Pine		400.0	Cords		
10	Jack Pine	Pulpwood	1.0	Cords	24.6	\$19,661.90
	Quaking Aspen		2.0	Cords		
	Red Pine		252.0	Cords		
11	Jack Pine	Pulpwood	2.0	Cords	47.1	\$37,659.85
	Quaking Aspen		3.0	Cords		
	Red Pine		483.0	Cords		
12	Red Pine	Pulpwood	125.0	Cords	14.9	\$9,693.75
TOTAL:			2.5	MBF		
TOTAL:			5,993.0	Cords		

## Sale Specific Conditions & Requirements

**Sale Name: Pine Trail**

**Sale Number: 33-009-16 Seq#: 1**

### 1 - Sale Area

#### 1.2 - Boundaries

##### 1.2.1 - Painted boundaries (1/14)

The sale boundary and Payment Unit boundaries are marked and identified by blue, red and yellow paint. Exterior sale boundary lines against private property are marked with blue paint. Exterior sale boundary lines against state are marked with red paint. Interior Payment Unit boundaries are marked with yellow paint. The painted boundary line trees are not Included Timber and are to be protected unless marked with orange paint. Yellow painted trees designating an interior Payment Unit boundary are only to be cut when all surrounding Payment Units have been paid.

### 2 - Timber Specifications

#### 2.1 - Included Timber

##### 2.1.1 - Clearcut unit(s) with unmerchantable trees (6/14)

Within Payment Unit(s) 1 and 4, cut all trees that are two (2) inches or more at DBH except do not cut any green marked trees within Payment Unit 4.

##### 2.1.3 - Cut tree marked unit(s) (12/08)

Within Payment Unit(s) 2, 5, 6, 7, 8, 9, 10, 11, and 12, all trees are designated for cutting when marked with orange paint above and below stump height, regardless of merchantability.

##### 2.1.4 - Species designation unit(s) (12/08)

Within Payment Unit(s) 3, all aspen, paper birch, red maple, balsam fir, spruce and pine trees greater than 14 inches (DBH) diameter at breast height are designated for cutting which meet minimum piece specifications in 2.2 - Utilization. For timber sale administration purposes, pine trees at 14 inches DBH are 16.5 inches at stump diameter measured at a point 12 inches above ground level.

##### 2.1.11 - Description of timber note (2/04)

Note that red pine pulpwood includes sawlog volumes.

#### 2.2 - Utilization

##### 2.2.3 - Stump heights (4/07)

Stump heights within Payment Unit(s) 1, 2, 5, 6, 7, 8, 9, 10, 11, and 12 shall not exceed 6 inches for all trees.

### 3 - Payments

#### 3.3 - Pre-measured Sales

##### 3.3.4 - Dividing payment units (7/14)

Payment Unit(s) with a purchase value of \$15,000 dollars or more may be divided at the request of the Purchaser and upon approval of the Unit Manager. Dividing Payment Units is a contract modification which requires a Timber Sale Contract Supplement. There will be only one division per Payment Unit unless agreed to by the Unit Manager.

#### 3.4 - Damaged Timber

##### 3.4.1 - Damaged timber (6/14)

General Condition and Requirement 3.4 Damaged Timber, defines liquidated damages for undesignated live merchantable trees which are cut or injured. In addition, extreme care should be taken to avoid damage to tree seedlings and saplings.

In areas with significant red pine regeneration, if more than 25% of the tree seedlings or saplings (1/4" to 4.5" DBH) within a specified portion of the sale area are damaged, liquidated damages will be assessed at \$100 dollars per acre for all acreage within that specified portion of the sale area that was damaged.

### 4 - Transportation

## 4.1 - Construction

### 4.1.6 - Road construction (1/09)

Construction of new roads or improvements of existing roads shall be done in such a way as to minimize the environmental and visual impacts. Merchantable trees shall be cut and utilized unless otherwise directed. Non-merchantable trees shall be severed and laid flat on the ground. Slash shall be scattered, and not left in windrows and kept a minimum of 10 feet back from the road edge. Stumps shall be set upright, not left on edge, and be moved at least 10 feet away from the road edge. Disturbed soil shall be feathered into the woods and not left in berms or windrows.

### 4.1.7 - Road closure (10/11)

All new roads built into the sale must be blocked to vehicle traffic upon completion of the sale. Overgrown roads that are reopened shall be considered new roads. In general, this will require constructing a four (4') foot high berm of stumps and logs covered with earth. Stumps and brush must be placed along the remainder of the trail. Contact the sale administrator for specific details of design and placement.

## 4.2 - Maintenance

### 4.2.2 - Fill material (4/07)

To maintain roads, fill material may be needed in areas where "holes" exist or may be expected to develop. This fill material should be placed before trucking begins. Contact the sale administrator regarding the availability of onsite sand or gravel from adjacent State-owned lands.

### 4.2.4 - Grading (12/14)

For completion of the sale, state forest roads must be graded. In general, this will require a road grader or bull dozer to shape up the roads after forest products have been hauled off site. This includes cleaning of drainage areas, grading, crowning and filling with gravel, if necessary. The grading equipment to be used must be approved by the Unit Manager or his/her representative.

### 4.2.5 - Two wheel drive condition (2/04)

All existing trail roads on and adjacent to the sale area must be passable by two-wheel drive traffic for the duration of the sale.

## 4.4 - Access

### 4.4.2 - Alternate route on private property (2/04)

It is the Purchaser's responsibility to obtain access across private land for any routes other than the route shown on the sale map.

## 5 - Operations

### 5.1 - Notification

#### 5.1.1 - Pre-sale conference (10/11)

A pre-sale conference on site between the Purchaser and sale administrator is required prior to beginning a Payment Unit to determine landing and road locations. The Unit Manager or his/her representative must be contacted at least 5 days in advance to schedule the conference.

#### 5.1.4 - Post-sale conference (6/11)

A post-sale conference on site between the Purchaser and sale administrator is required 5 days prior to the completion of active logging operations to determine clean-up and repair of landings, road edges, and the fulfillment of other contract specifications.

#### 5.1.6 - Utility R.O.W. (1/15)

It is the responsibility of the Purchaser to obtain permission from the utility company to utilize the power line R.O.W. for operations.

### 5.2 - Conduct of Operations

#### 5.2.1 - Slash

##### 5.2.1.2 - Slash Removal

#### 5.2.1.2.1 - Slash removal, right-of-way (9/16)

All slash must be removed at least 15 feet from the cleared right-of-way of forest roads.

#### 5.2.1.2.6 - Slash removal, general (7/05)

All slash must be removed from Payment Unit 1. The reason is because this will assist in the scarification done post harvest.

#### 5.2.1.8 - Slash height (12/08)

No slash or tree tops may exceed 24 inches in height.

### 5.2.2 - Hazard Trees/Snags

#### 5.2.2.1 - Den trees (2/04)

Obvious hollow and/or den trees shall be protected and left standing unless they are a safety hazard.

### 5.2.3 - Operating Restrictions

#### 5.2.3.1 - Operating restrictions (9/11)

Within Payment Unit(s) 3, 5, 6, 7, 8, 9, 10, 11, and 12, unless changed by written agreement, cutting, skidding, and hauling are limited to the period of July 15th to December 1st. This restriction is because of the cross country ski trail. If weather permits (snow free), work could continue after December 1st with the permission of the unit manager.

#### 5.2.3.3 - Bark slippage restriction (3/09)

Within Payment Unit(s) 2, 5, 6, 7, 8, 9, 10, 11, and 12, unless changed by written agreement, cutting and skidding are not permitted during the period of April 15 to July 15. This restriction is because of bark slippage.

#### 5.2.3.6 - Bark beetle restriction (12/08)

In the event drought creates a high risk of pine bark beetle infestation, pine is not to be cut during the period March 1 through July 1, unless all portions of trees greater than two inches in diameter are removed from the sale area, reduced to chips, or treated to the satisfaction of the Unit Manager or his/her representative, within fifteen days of being severed from the stump. Pine log decks, pulpwood piles and treetops that are piled for chipping in the fall or winter within a 1/4 mile of susceptible sites must be removed before March 15. Residual slash must not be placed in piles or rows and must be spread over the site for quick drying. The Department of Natural Resources will exercise this specification if the risk of damage warrants.

### 5.2.22 - Operating Caution

#### 5.2.22.1 - Operating caution (6/11)

It is recommended, but not required, that within Payment Unit(s) 4, cutting, skidding, and hauling occur during a dry summer or snow free winter conditions. The reason for the recommendation is because within the sale unit area is low and wet and will require crossing the Days River pathway in the winter months for access.

### 5.2.37 - No decking areas (12/08)

No decking is allowed within 50 feet of the powerline without permission of the powerline company. No decking is allowed in the Days River parking lot; see GPS point on the Timber Sale Map.

### 5.2.40 - Pathway protection (10/10)

The Days River pathway is a bike, hiking, ski trail and is shown on the Timber Sale Map. Do not cut trees or damage posts with blue pathway markers. Maintain a 20-foot wide slash, debris, and rut free zone daily, using the pathway as the centerline. Do not run equipment down the pathway. Skidding across the trail may only occur in locations approved by the sale administrator.

### 5.2.41 - Snowmobile trail protection (9/11)

The road on the west side is a snowmobile and ORV trail and is shown on the Timber Sale Map. Do not cut or damage posts with orange trail markers or traffic control signs. If the trail is used, it must be maintained and restored to a condition equal to or better than before the sale. If the trail is used for hauling from July 15th to December 1st, it must be graded to the satisfaction of the Unit Manager or his/her representative prior to December 1st. If the trail road is to be used for hauling during the snowmobile season, then a snow covered base must be left on the trail. Maintain a 20 foot wide slash, debris, and rut free zone daily using the snowmobile trail as the centerline. No decking of forest products will be permitted along the snowmobile and ORV trail and the trail will be maintained and not blocked during the ORV/ATV season.

## 5.4 - Soil Protection

#### 5.4.1 - Rutting restriction, general (7/16)

Operations are to cease immediately if equipment and weather conditions result in rutting of roads and/or skid trails which is 12 inches or greater in depth and 50 feet in length. The Unit Manager or his/her representative may restrict hauling and/or skidding if ruts exceed the specified depth. With the Unit Manager or his/her representative's approval, the Purchaser may return to the area when the risk of rutting has decreased.

### 6 - Safety and Fire Prevention

#### 6.2 - Signing

##### 6.2.1 - Road posting (9/09)

The Purchaser is responsible for posting and maintaining caution signs on the access roads and the Days River Road that are being used prior to beginning operations. The road must be posted at locations designated by the timber sale administrator to warn of logging activity and truck traffic. Signs must be removed when harvest operations are suspended or completed. The Purchaser will provide these signs.

##### 6.2.2 - Snowmobile trail posting (8/09)

The Purchaser is responsible for posting and maintaining caution signs on the snowmobile trail prior to beginning operations during the snowmobile season (approximately December 1 to March 31). The trail must be posted at appropriate distances from the sale area to warn of logging activity and truck traffic. Signs must be removed when harvest operations are suspended or completed. The Purchaser will provide these signs.

##### 6.2.3 - Recreational trail posting (2/10)

The Purchaser is responsible for posting and maintaining caution signs on the Days River pathway and ATV/ORV trail prior to beginning operations. The trail must be posted at locations designated by the timber sale administrator to warn of logging activity and truck traffic at both ends of the trail. Signs must be removed when harvest operations are suspended or completed. The Purchaser will provide these signs.

### 7 - Other Conditions

#### 7.3 - Contract Modifications

##### 7.3.1 - Emerald Ash Borer

###### 7.3.1.1 - Emerald ash borer, no ash or firewood on sale (2/05)

There is no ash or "firewood" in this sale, but it is located within an emerald ash borer quarantined area. The Director of the Michigan Department of Agriculture (MDA) by the authority of Act No. 72 of the Public Acts of 1945, as amended, and Quarantine Regulation No. 620, has promulgated this quarantine to prevent the further spread of this pest and sets forth: definitions, regulated articles, regulated areas, conditions of movement, violations and penalties, and special exemptions. The Purchaser must comply with this quarantine. Contact the MDA for further information.





# TIMBER SALE MAP

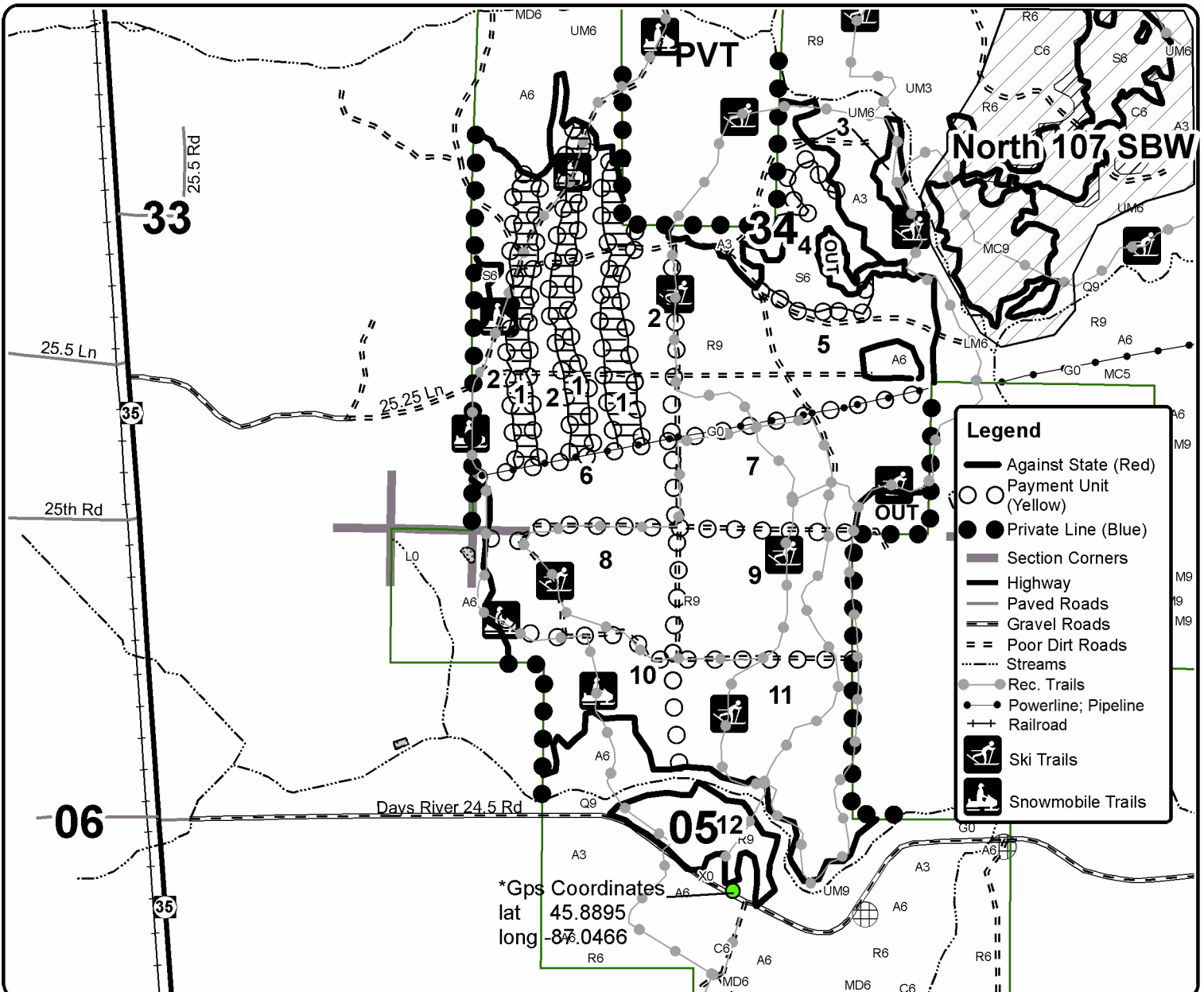
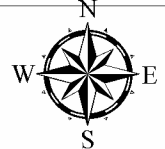
This information provided by authority of Part 525, 1994 PA 451, as amended.

Forest Management Unit Escanaba	County Delta	Mapped By Racine	Date 09/25/2016	Page 1	of 1
Township 40, 41N	Range 22W	Section(s) and Subdivision(s) See Proposal	Scale 1:15,840		
Cruised By Racine					

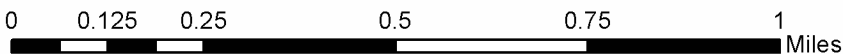
Cover Type				Density			
A = Aspen	H = Hemlock	N = Marsh	U = Upland Brush	0 = Non Stocked	5 = Pole Timber Medium		
B = Paper Birch	J = Jack Pine	O = Oak	UM = Upland Mixed	1 = Seedling Sapling Poor	6 = Pole Timber Well		
C = Cedar	L = Lowland Brush	P = Lowland Poplar	V = Bog or Marsh	2 = Seedling Sapling Medium	7 = Saw Timber Poor		
D = Treed Bog	LM = Lowland Mixed	Q = Mixed Swamp Conifer	W = White Pine	3 = Seedling Sapling Well	8 = Saw Timber Medium		
E = Swamp Hdwoods	M = Mpl, Bch, Brch	R = Red Pine	X = Non Stocked	4 = Pole Timber Poor	9 = Saw Timber Well		
F = Spruce Fir	MC = Mixed Conifer	S = Black Spruce	Z = Water				
G = Grass	MD = Mixed Deciduous	T = Tamarack					

PU	Acres	PU	Acres	PU	Acres	PU	Acres
1	31.9	4	15.4	7	41.9	10	24.6
2	65.9	5	54.7	8	35	11	47.1
3	7.9	6	22	9	39	12	14.9

**Pine Trail**  
**Compartment 107**  
**400.3 Acres**



\*Gps Coordinates  
 lat 45.8895  
 long -84.0466





TIMBER SALE INFORMATION

Minnewaska (33-010-16)

Delta County (Advertised Price \$50,245.95)

SALE NOTE: Note: The red pine pulpwood volumes consist of red pine sawlog and pulpwood.

A timber sale contract for this lump sum, sealed bid timber sale will be awarded to the responsible bidder offering the highest sealed bid price. Bids must be at or above the following advertised price for each species:

<u>PRODUCTS &amp; SPECIES</u>	<u>ESTIMATED UNITS*</u>	<u>ADVERTISED PRICE</u>
Sawtimber		
Red Maple	1.20 MBF	\$ 237.00 / MBF
Pulpwood		
Balsam Fir	3.00 Cords	\$ 28.45 / Cord
Black Spruce	90.00 Cords	\$ 26.00 / Cord
Jack Pine	62.00 Cords	\$ 48.50 / Cord
Mixed Hardwood	39.00 Cords	\$ 35.90 / Cord
N. White Cedar	112.00 Cords	\$ 35.15 / Cord
Quaking Aspen	7.00 Cords	\$ 35.40 / Cord
Red Pine	571.00 Cords	\$ 61.45 / Cord
Tamarack	143.00 Cords	\$ 17.85 / Cord
White Pine	32.00 Cords	\$ 40.75 / Cord

\* The total volume is statistically estimated within plus (+) or minus (-) 13.20 percent. The estimated units are final and not subject to adjustment. Prospective bidders are urged to examine this timber and to make their own estimates of quantity and quality.

**BOND AND PAYMENT SCHEDULE:**

1. A bond in the amount of \$2,512.00 to insure faithful performance of the conditions of the contract will be deposited by the successful bidder within 21 days of the sale award.
2. Cutting in any sale or unit without the required advance payment would be considered a trespass.
3. Total payment must be paid in advance or according to the following schedule:
  - (a) Ten percent (10%) of the sale value must be paid within 21 days of the sale award.
  - (b) The 10% down payment will be credited towards the first unit cut.
4. If no cutting takes place, the 10% down payment will not be refunded.
5. Operations on the contract issued will terminate on 12/31/2019.

**Description of Timber by Payment Unit (PU)**

PU	MARKET GROUP	PRODUCT	QUANTITY	UNIT	ACRES	ADVERTISE PRICE
1	Red Pine	Pulpwood	120.0	Cords	13.2	\$7,374.00
2	Balsam Fir	Pulpwood	3.0	Cords	13.0	\$8,152.35
	Black Spruce		50.0	Cords		
	Jack Pine		49.0	Cords		
	Mixed Hardwood		8.0	Cords		
	<i>Paper Birch</i>		3.0	<i>Cords</i>		
	<i>Red Maple</i>		5.0	<i>Cords</i>		
	N. White Cedar		45.0	Cords		
	Quaking Aspen		3.0	Cords		
	Red Pine		6.0	Cords		
	Tamarack		69.0	Cords		
	White Pine		20.0	Cords		
3	Black Spruce		Pulpwood	40.0		
	Jack Pine	13.0		Cords		
	Mixed Hardwood	10.0		Cords		
	<i>Paper Birch</i>	3.0		<i>Cords</i>		
	<i>Red Maple</i>	7.0		<i>Cords</i>		
	N. White Cedar	67.0		Cords		
	Red Pine	8.0		Cords		
	Tamarack	74.0		Cords		
	White Pine	12.0		Cords		
4	Red Pine	Pulpwood		68.0	Cords	11.0
5	Red Maple	Sawtimber	1.2	MBF	38.3	\$23,854.95
	Mixed Hardwood	Pulpwood	21.0	Cords		
	<i>Red Maple</i>		21.0	<i>Cords</i>		
	Quaking Aspen		4.0	Cords		
	Red Pine		369.0	Cords		
TOTAL:			1.2	MBF		
TOTAL:			1,059.0	Cords		

## Sale Specific Conditions & Requirements

**Sale Name: Minnewaska**

**Sale Number: 33-010-16 Seq#: 1**

### 1 - Sale Area

#### 1.2 - Boundaries

##### 1.2.1 - Painted boundaries (1/14)

The sale boundary and Payment Unit boundaries are marked and identified by blue and red paint. Exterior sale boundary lines against private property are marked with blue paint. Exterior sale boundary lines against state are marked with red paint. Within Payment Unit 2 do not cut within the retention areas marked with red painted x marks. The painted boundary line trees are not Included Timber and are to be protected unless marked with orange paint.

### 2 - Timber Specifications

#### 2.1 - Included Timber

##### 2.1.2 - Clearcut unit(s) w/o unmerchantable trees (8/11)

Within Payment Unit(s) 2 and 3, cut all trees which meet minimum piece specifications in 2.2 Utilization.

##### 2.1.3 - Cut tree marked unit(s) (12/08)

Within Payment Unit(s) 1, 4, and 5, all trees are designated for cutting when marked with orange paint above and below stump height, regardless of merchantability.

##### 2.1.11 - Description of timber note (2/04)

Note that the red pine pulpwood volumes include sawlog volumes.

### 3 - Payments

#### 3.3 - Pre-measured Sales

##### 3.3.4 - Dividing payment units (7/14)

Payment Unit(s) 5 may be divided at the request of the Purchaser and upon approval of the Unit Manager. Dividing Payment Units is a contract modification which requires a Timber Sale Contract Supplement. There will be only one division in Payment Unit 5 unless agreed to by the unit manager.

### 4 - Transportation

#### 4.1 - Construction

##### 4.1.6 - Road construction (1/09)

Construction of new roads or improvements of existing roads shall be done in such a way as to minimize the environmental and visual impacts. Merchantable trees shall be cut and utilized unless otherwise directed. Non-merchantable trees shall be severed and laid flat on the ground. Slash shall be scattered, and not left in windrows and kept a minimum of 10 feet back from the road edge. Stumps shall be set upright, not left on edge, and be moved at least 10 feet away from the road edge. Disturbed soil shall be feathered into the woods and not left in berms or windrows.

##### 4.1.7 - Road closure (10/11)

All new roads built into the sale must be blocked to vehicle traffic upon completion of the sale. In general, this will require constructing a four (4') foot high berm of stumps and logs covered with earth. Contact the sale administrator for specific details of design and placement.

#### 4.2 - Maintenance

##### 4.2.2 - Fill material (4/07)

To maintain roads, fill material may be needed in areas where "holes" exist or may be expected to develop. This fill material should be placed before trucking begins. Contact the sale administrator regarding the availability of onsite sand or gravel from adjacent State-owned lands.

##### 4.2.4 - Grading (12/14)

For completion of the sale, state forest roads must be graded. In general, this will require a road grader or bull dozer to shape

up the roads after forest products have been hauled off site. This includes cleaning of drainage areas, grading, crowning and filling with gravel, if necessary. The grading equipment to be used must be approved by the Unit Manager or his/her representative.

## 5 - Operations

### 5.1 - Notification

#### 5.1.1 - Pre-sale conference (10/11)

A pre-sale conference on site between the Purchaser and sale administrator is required prior to beginning any operations. The Unit Manager or his/her representative must be contacted at least 5 days in advance to schedule the conference.

#### 5.1.4 - Post-sale conference (6/11)

A post-sale conference on site between the Purchaser and sale administrator is required 5 days prior to the completion of active logging operations to determine clean-up and repair of landings, road edges, and the fulfillment of other contract specifications.

### 5.2 - Conduct of Operations

#### 5.2.1 - Slash

##### 5.2.1.8 - Slash height (12/08)

No slash or tree tops may exceed 24 inches in height.

#### 5.2.2 - Hazard Trees/Snags

##### 5.2.2.1 - Den trees (2/04)

Obvious hollow and/or den trees shall be protected and left standing unless they are a safety hazard.

#### 5.2.3 - Operating Restrictions

##### 5.2.3.3 - Bark slippage restriction (3/09)

Within Payment Unit(s) 1, 4, and 5, unless changed by written agreement, cutting and skidding are not permitted during the period of April 15 to July 15. This restriction is because of bark slippage.

#### 5.2.22 - Operating Caution

##### 5.2.22.1 - Operating caution (6/11)

It is recommended, but not required, that within Payment Unit(s) 4 and 5, cutting, skidding, and hauling occur during the time period of July 15th through December 1st. The reason for the recommendation is because the snowmobile trail will be used for access.

##### 5.2.22.2 - Operating caution (6/11)

It is recommended, but not required, that within Payment Unit(s) 2 and 3, cutting, skidding, and hauling occur during frozen winter conditions. The reason for the recommendation is because these units are low and wet.

#### 5.2.37 - No decking areas (12/08)

No decking is allowed within 50 feet of the Brampton snowmobile/ORV trail without permission of the Unit Manager or his/her representative.

#### 5.2.39 - ORV trail/route protection (12/12)

The Brampton trail is an ORV trail or route and is shown on the Timber Sale Map. Do not cut trees or damage posts with orange ORV markers. The trail must be maintained and kept open during operations.

#### 5.2.41 - Snowmobile trail protection (9/11)

The Brampton trail is a snowmobile trail and is shown on the Timber Sale Map. Do not cut or damage posts with orange trail markers or traffic control signs. If the trail is used, it must be maintained and restored to a condition equal to or better than before the sale. If the trail is used for hauling from July 15th through December 1st, it must be graded to the satisfaction of the Unit Manager or his/her representative prior to December 1st. If the trail road is to be used for hauling during the snowmobile season, then a snow covered base must be left on the trail. No decking of forest products will be permitted along the snowmobile trail.

## 5.4 - Soil Protection

### 5.4.1 - Rutting restriction, general (7/16)

Operations are to cease immediately if equipment and weather conditions result in rutting of roads and/or skid trails which is 12 inches or greater in depth and 50 feet in length. The Unit Manager or his/her representative may restrict hauling and/or skidding if ruts exceed the specified depth. With the Unit Manager or his/her representative's approval, the Purchaser may return to the area when the risk of rutting has decreased.

## 6 - Safety and Fire Prevention

### 6.2 - Signing

#### 6.2.1 - Road posting (9/09)

The Purchaser is responsible for posting and maintaining caution signs on the Days River Road prior to beginning operations. The road must be posted at appropriate distances from the sale area to warn of logging activity and truck traffic. Signs must be removed when harvest operations are suspended or completed. The Purchaser will provide these signs.

#### 6.2.2 - Snowmobile trail posting (8/09)

The Purchaser is responsible for posting and maintaining caution signs on the Brampton snowmobile trail prior to beginning operations during the snowmobile season (approximately December 1 to March 31). The trail must be posted at appropriate distances from the sale area to warn of logging activity and truck traffic. Signs must be removed when harvest operations are suspended or completed. The Purchaser will provide these signs.

#### 6.2.3 - Recreational trail posting (2/10)

The Purchaser is responsible for posting and maintaining caution signs on the Brampton ORV trail prior to beginning operations. The trail must be posted at appropriate distances from the sale area to warn of logging activity and truck traffic at both ends of the trail. Signs must be removed when harvest operations are suspended or completed. The Purchaser will provide these signs.

## 7 - Other Conditions

### 7.3 - Contract Modifications

#### 7.3.1 - Emerald Ash Borer

##### 7.3.1.1 - Emerald ash borer, no ash or firewood on sale (2/05)

There is no ash or "firewood" in this sale, but it is located within an emerald ash borer quarantined area. The Director of the Michigan Department of Agriculture (MDA) by the authority of Act No. 72 of the Public Acts of 1945, as amended, and Quarantine Regulation No. 620, has promulgated this quarantine to prevent the further spread of this pest and sets forth: definitions, regulated articles, regulated areas, conditions of movement, violations and penalties, and special exemptions. The Purchaser must comply with this quarantine. Contact the MDA for further information.



# TIMBER SALE MAP

This information provided by authority of Part 525, 1994 PA 451, as amended.

Sale Number	Year
33-010-16-01	16

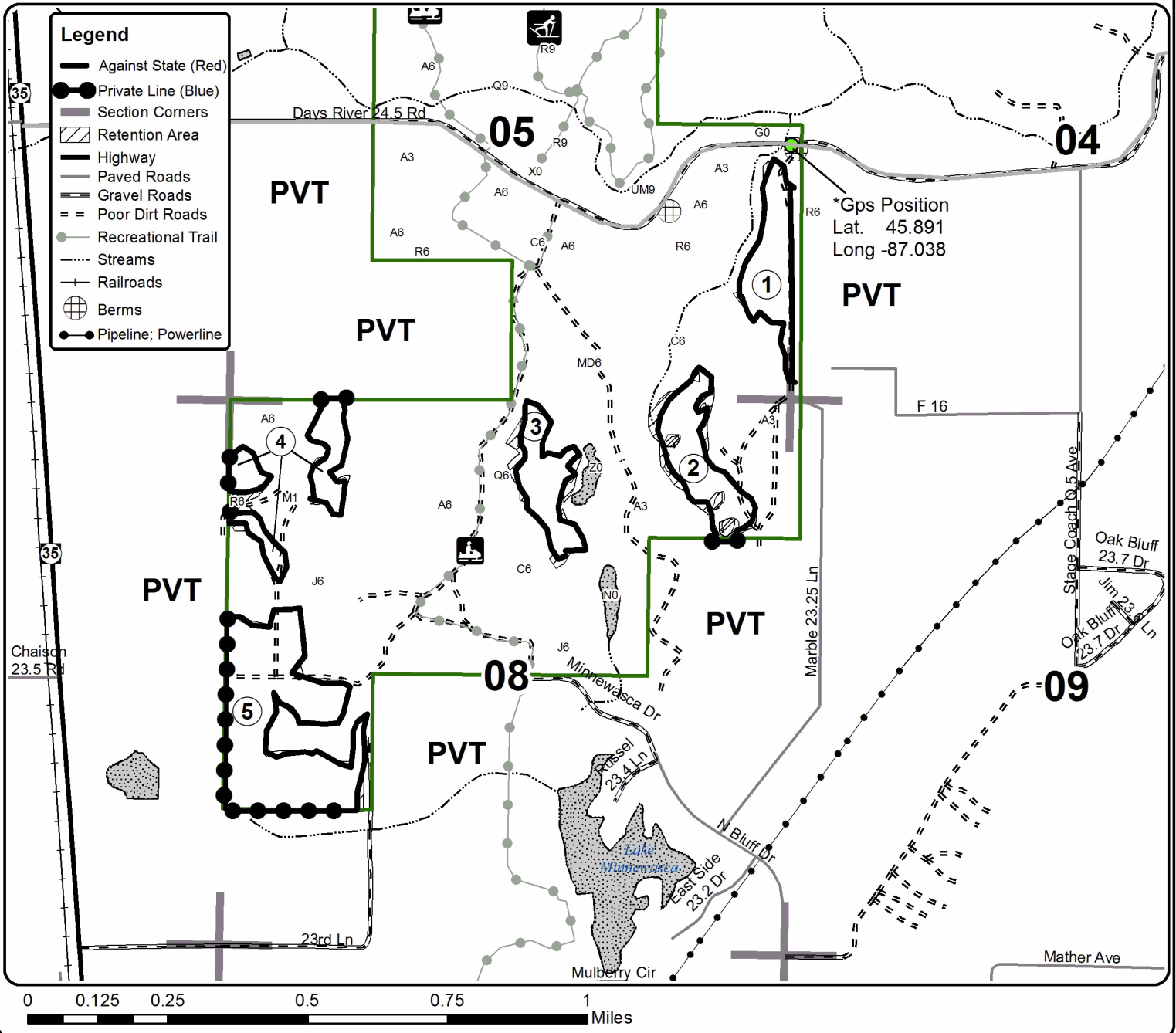
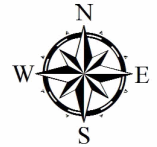
Forest Management Unit Escanaba	County Delta	Mapped By Racine	Date 9/27/2016	Page 1	of 1
Township 40N	Range 22W	Section(s) and Subdivision(s) 5) NESE, SESE 8) NENE, NWNE, SWNE, NWNW, SWNW, NWSW	Scale 1:15,840		

Cover Type				Density			
A = Aspen	H = Hemlock	N = Marsh	U = Upland Brush	0 = Non Stocked	5 = Pole Timber Medium		
B = Paper Birch	J = Jack Pine	O = Oak	UM = Upland Mixed	1 = Seedling Sapling Poor	6 = Pole Timber Well		
C = Cedar	L = Lowland Brush	P = Lowland Poplar	V = Bog or Marsh	2 = Seedling Sapling Medium	7 = Saw Timber Poor		
D = Treed Bog	LM = Lowland Mixed	Q = Mixed Swamp Conifer	W = White Pine	3 = Seedling Sapling Well	8 = Saw Timber Medium		
E = Swamp Hdwoods	M = Mpl, Bch, Brch	R = Red Pine	X = Non Stocked	4 = Pole Timber Poor	9 = Saw Timber Well		
F = Spruce Fir	MC = Mixed Conifer	S = Black Spruce	Z = Water				
G = Grass	MD = Mixed Deciduous	T = Tamarack					

PU	Acres	PU	Acres
1	13.2	4	11
2	13	5	38.3
3	10.7		

## Minnewaska

Compartment 107  
86.2 Acres





## TIMBER SALE INFORMATION

### Over the Bridge (33-011-16)

Delta County (Advertised Price \$87,292.10)

SALE NOTE: A Department gate is located at the beginning of the access road into the sale. The Department has a management easement for use of this access road. Contact the Escanaba Forest Resources Division office for landowner contact information.

Access may be through private land.

A timber sale contract for this lump sum, sealed bid timber sale will be awarded to the responsible bidder offering the highest sealed bid price. Bids must be at or above the following advertised price for each species:

<u>PRODUCTS &amp; SPECIES</u>	<u>ESTIMATED UNITS*</u>	<u>ADVERTISED PRICE</u>
Sawtimber		
Beech	5.30 MBF	\$ 74.00 / MBF
Paper Birch	5.90 MBF	\$ 113.00 / MBF
Red Maple	59.00 MBF	\$ 237.00 / MBF
Red Oak	1.10 MBF	\$ 201.00 / MBF
White Pine	2.80 MBF	\$ 75.00 / MBF
Yellow Birch	2.70 MBF	\$ 83.00 / MBF
Pulpwood		
Balsam Fir	119.00 Cords	\$ 28.45 / Cord
Hemlock	5.00 Cords	\$ 22.50 / Cord
Jack Pine	2.00 Cords	\$ 48.50 / Cord
Mixed Hardwood	1,129.00 Cords	\$ 35.90 / Cord
Mixed Spruce	25.00 Cords	\$ 26.00 / Cord
N. White Cedar	4.00 Cords	\$ 35.15 / Cord
Quaking Aspen	15.00 Cords	\$ 35.40 / Cord
Red Pine	395.00 Cords	\$ 61.45 / Cord
White Pine	46.00 Cords	\$ 40.75 / Cord

\* The total volume is statistically estimated within plus (+) or minus (-) 9.51 percent. The estimated units are final and not subject to adjustment. Prospective bidders are urged to examine this timber and to make their own estimates of quantity and quality.

### **BOND AND PAYMENT SCHEDULE:**

1. A bond in the amount of \$4,365.00 to insure faithful performance of the conditions of the contract will be deposited by the successful bidder within 21 days of the sale award.
2. Cutting in any sale or unit without the required advance payment would be considered a trespass.
3. Total payment must be paid in advance or according to the following schedule:
  - (a) Ten percent (10%) of the sale value must be paid within 21 days of the sale award.
  - (b) The 10% down payment will be credited towards the first unit cut.
4. If no cutting takes place, the 10% down payment will not be refunded.
5. Operations on the contract issued will terminate on 12/31/2019.

**Description of Timber by Payment Unit (PU)**

PU	MARKET GROUP	PRODUCT	QUANTITY	UNIT	ACRES	ADVERTISE PRICE
1	Red Pine	Pulpwood	109.0	Cords	7.2	\$6,820.30
	White Pine		3.0	Cords		
2	White Pine	Sawtimber	1.1	MBF	14.2	\$9,978.80
	Balsam Fir	Pulpwood	9.0	Cords		
	Mixed Hardwood		16.0	Cords		
	<i>Red Maple</i>		16.0	Cords		
	Mixed Spruce		3.0	Cords		
	<i>White Spruce</i>		3.0	Cords		
	Red Pine		133.0	Cords		
	White Pine		20.0	Cords		
3	Red Maple	Sawtimber	1.9	MBF	9.4	\$4,122.30
	Balsam Fir	Pulpwood	45.0	Cords		
	Mixed Hardwood		21.0	Cords		
	<i>Beech</i>		2.0	Cords		
	<i>Black Ash</i>		3.0	Cords		
	<i>Red Maple</i>		16.0	Cords		
	Mixed Spruce		19.0	Cords		
	<i>Black Spruce</i>		10.0	Cords		
	<i>White Spruce</i>		9.0	Cords		
	N. White Cedar		4.0	Cords		
	Quaking Aspen		11.0	Cords		
	Red Pine		8.0	Cords		
	White Pine		3.0	Cords		
	4		White Pine	Sawtimber		
Balsam Fir		Pulpwood	26.0	Cords		
Jack Pine			2.0	Cords		
Mixed Hardwood			3.0	Cords		
<i>Red Maple</i>			3.0	Cords		
Mixed Spruce			3.0	Cords		
<i>White Spruce</i>			3.0	Cords		
Red Pine			141.0	Cords		
White Pine			20.0	Cords		
5	Paper Birch	Sawtimber	0.8	MBF	20.6	\$10,276.50
	Red Maple	Pulpwood	9.4	MBF		
	Balsam Fir		16.0	Cords		
	Mixed Hardwood		209.0	Cords		
	<i>Beech</i>		7.0	Cords		
	<i>Paper Birch</i>		22.0	Cords		
	<i>Red Maple</i>		180.0	Cords		
6	Paper Birch	Sawtimber	1.6	MBF	19.7	\$6,701.40
	Red Maple	Pulpwood	4.5	MBF		
	Hemlock		5.0	Cords		
	Mixed Hardwood		138.0	Cords		
	<i>Beech</i>		12.0	Cords		
	<i>Paper Birch</i>		17.0	Cords		
	<i>Red Maple</i>		96.0	Cords		
	<i>Sugar Maple</i>		13.0	Cords		
	Quaking Aspen		4.0	Cords		
	Red Pine		4.0	Cords		
7	Beech	Sawtimber	5.3	MBF	21.6	\$17,537.80
	Red Maple	Pulpwood	25.0	MBF		
	Red Oak		1.1	MBF		
	Yellow Birch		1.9	MBF		
	Mixed Hardwood		302.0	Cords		
	<i>Beech</i>		129.0	Cords		
	<i>Black Cherry</i>		3.0	Cords		

**Description of Timber by Payment Unit (PU), con't**

PU	MARKET GROUP	PRODUCT	QUANTITY	UNIT	ACRES	ADVERTISE PRICE
	<i>Paper Birch</i>		3.0	<i>Cords</i>		
	<i>Red Maple</i>		158.0	<i>Cords</i>		
	<i>Red Oak</i>		2.0	<i>Cords</i>		
	<i>Yellow Birch</i>		7.0	<i>Cords</i>		
8	Paper Birch	Sawtimber	3.5	MBF	25.3	\$21,225.65
	Red Maple		18.2	MBF		
	Yellow Birch		0.8	MBF		
	Balsam Fir	Pulpwood	23.0	Cords		
	Mixed Hardwood		440.0	Cords		
	<i>Beech</i>		38.0	<i>Cords</i>		
	<i>Paper Birch</i>		59.0	<i>Cords</i>		
	<i>Red Maple</i>		340.0	<i>Cords</i>		
	<i>Yellow Birch</i>		3.0	<i>Cords</i>		
TOTAL:			76.8	MBF		
TOTAL:			1,740.0	Cords		

## Sale Specific Conditions & Requirements

**Sale Name: Over the Bridge**

**Sale Number: 33-011-16 Seq#: 1**

### 1 - Sale Area

#### 1.2 - Boundaries

##### 1.2.1 - Painted boundaries (1/14)

The sale boundary and Payment Unit boundaries are marked and identified by blue, red and yellow paint. Exterior sale boundary lines against private property are marked with blue paint. Exterior sale boundary lines against state are marked with red paint. Interior Payment Unit boundaries are marked with yellow paint. The painted boundary line trees are not Included Timber and are to be protected unless marked with orange paint. Yellow painted trees designating an interior Payment Unit boundary are only to be cut when all surrounding Payment Units have been paid.

### 2 - Timber Specifications

#### 2.1 - Included Timber

##### 2.1.2 - Clearcut unit(s) w/o unmerchantable trees (8/11)

Within Payment Unit(s) 3, 5, 7, and 8, cut all trees which meet minimum piece specifications in 2.2 Utilization with the following exceptions:

Within Payment Unit 3, do not cut any pine and hemlock except those pine trees marked with orange paint. Do not cut any birch and cedar trees marked with orange X marks. The designated trees for harvest will not be required to cut on the slope.

Within Payment Unit 5, do not cut any pine.

Within Payment Unit 7, do not cut any hemlock. Also, see spec 2.1.9.

Within Payment Unit 8, do not cut any hemlock.

##### 2.1.3 - Cut tree marked unit(s) (12/08)

Within Payment Unit(s) 4 and 6, all trees are designated for cutting when marked with orange paint above and below stump height, regardless of merchantability. Within Payment Unit 4, cut all merchantable spruce and fir trees. Also, see spec 2.1.9, which applies to Payment Unit 6.

##### 2.1.7 - Leave tree marked unit(s) (6/14)

Within Payment Unit(s) 1 and 2, all trees, which meet minimum piece specifications in 2.2 Utilization, are designated for cutting except hemlock and trees marked with green paint above and below stump height.

##### 2.1.9 - Harvest exception (12/08)

Do not cut hemlock within Payment Units 6 and 7 other than those that are necessary to remove in order to operate within the sale area. Every effort must be made to preserve the existing hemlock and to leave an intact stand upon sale completion. All cut hemlock shall be piled separately by products and scaled in the woods unless other scaling arrangements are agreed to by the Unit Manager or his/her representative. Stumpage price for any unmarked hemlock shall be \$50.00 per cord.

##### 2.1.11 - Description of timber note (2/04)

Note that all red pine pulpwood volumes include sawlog volumes.

### 3 - Payments

#### 3.3 - Pre-measured Sales

##### 3.3.4 - Dividing payment units (7/14)

Payment Unit(s) with a purchase value greater than \$15,000 dollars may be divided at the request of the Purchaser and upon approval of the Unit Manager. Dividing Payment Units is a contract modification which requires a Timber Sale Contract Supplement. There will be only one division per Payment Unit unless agreed to by the unit manager.

### 4 - Transportation

## 4.1 - Construction

### 4.1.6 - Road construction (1/09)

Construction of new roads or improvements of existing roads shall be done in such a way as to minimize the environmental and visual impacts. Merchantable trees shall be cut and utilized unless otherwise directed. Non-merchantable trees shall be severed and laid flat on the ground. Slash shall be scattered, and not left in windrows and kept a minimum of 10 feet back from the road edge. Stumps shall be set upright, not left on edge, and be moved at least 10 feet away from the road edge. Disturbed soil shall be feathered into the woods and not left in berms or windrows.

### 4.1.7 - Road closure (10/11)

All new roads built into the sale must be blocked to vehicle traffic upon completion of the sale. In general, this will require constructing a four (4') foot high berm of stumps and logs covered with earth. Contact the sale administrator for specific details of design and placement.

## 4.2 - Maintenance

### 4.2.2 - Fill material (4/07)

To maintain roads, fill material may be needed in areas where "holes" exist or may be expected to develop. This fill material should be placed before trucking begins. Contact the sale administrator regarding the availability of onsite sand or gravel from adjacent State-owned lands.

### 4.2.4 - Grading (12/14)

For completion of the sale, state forest roads must be graded. In general, this will require a road grader or bull dozer to shape up the roads after forest products have been hauled off site. This includes cleaning of drainage areas, grading, crowning and filling with gravel, if necessary. The grading equipment to be used must be approved by the Unit Manager or his/her representative.

## 4.4 - Access

### 4.4.1 - Private property access (3/11)

Permission for access across private land has been obtained by the DNR.

### 4.4.3 - Access gate (12/08)

The access gate must be locked at the completion of each day unless otherwise approved by the Unit Manager or his/her representative.

## 5 - Operations

### 5.1 - Notification

#### 5.1.1 - Pre-sale conference (10/11)

A pre-sale conference on site between the Purchaser and sale administrator is required prior to beginning any operations to determine landing and road locations. The Unit Manager or his/her representative must be contacted at least 5 days in advance to schedule the conference.

#### 5.1.4 - Post-sale conference (6/11)

A post-sale conference on site between the Purchaser and sale administrator is required 5 days prior to the completion of active logging operations to determine clean-up and repair of landings, road edges, and the fulfillment of other contract specifications.

#### 5.1.6 - Utility R.O.W. (1/15)

It is the responsibility of the Purchaser to obtain permission from the utility company to utilize the power line R.O.W. for operations.

### 5.2 - Conduct of Operations

#### 5.2.1 - Slash

##### 5.2.1.8 - Slash height (12/08)

No slash or tree tops may exceed 24 inches in height.

#### 5.2.2 - Hazard Trees/Snags

#### 5.2.2.1 - Den trees (2/04)

Obvious hollow and/or den trees shall be protected and left standing unless they are a safety hazard.

#### 5.2.3 - Operating Restrictions

##### 5.2.3.3 - Bark slippage restriction (3/09)

Within Payment Unit(s) 1, 2, 4, and 6, unless changed by written agreement, cutting and skidding are not permitted during the period of April 15 to July 15. This restriction is because of bark slippage.

##### 5.2.3.9 - Beech hauling restriction (3/11)

American beech wood products with bark still attached, other than chips, are not to be transported from stands infested with beech scale to or through uninfested beech areas from July 15 to November 15. Beech scale is mobile at this time of year and can move from infested wood to live beech. (See Map of current beech scale distribution on the DNR Forest Health Website, [www.michigan.gov/dnr](http://www.michigan.gov/dnr).)

#### 5.2.37 - No decking areas (12/08)

No decking is allowed within 50 feet of the powerline without permission of the powerline company.

#### 5.4 - Soil Protection

##### 5.4.1 - Rutting restriction, general (7/16)

Operations are to cease immediately if equipment and weather conditions result in rutting of roads and/or skid trails which is 12 inches or greater in depth and 50 feet in length. The Unit Manager or his/her representative may restrict hauling and/or skidding if ruts exceed the specified depth. With the Unit Manager or his/her representative's approval, the Purchaser may return to the area when the risk of rutting has decreased.

### 6 - Safety and Fire Prevention

#### 6.2 - Signing

##### 6.2.1 - Road posting (9/09)

The Purchaser is responsible for posting and maintaining caution signs on the Days River Road prior to beginning operations. The road must be posted at appropriate distances from the sale area to warn of logging activity and truck traffic. Signs must be removed when harvest operations are suspended or completed. The Purchaser will provide these signs.

### 7 - Other Conditions

#### 7.3 - Contract Modifications

##### 7.3.1 - Emerald Ash Borer

###### 7.3.1.2 - Emerald ash borer, ash or firewood on sale (2/05)

There is ash and/or "firewood" in this sale and it is located within an emerald ash borer quarantined area. The Director of the Michigan Department of Agriculture (MDA) by the authority of Act No. 72 of the Public Acts of 1945, as amended, and Quarantine Regulation No. 620, has promulgated this quarantine to prevent the further spread of this pest and sets forth: definitions, regulated articles, regulated areas, conditions of movement, violations and penalties, and special exemptions. The Purchaser must comply with this quarantine. Contact the MDA for further information.



# TIMBER SALE MAP

This information provided by authority of Part 525, 1994 PA 451, as amended.

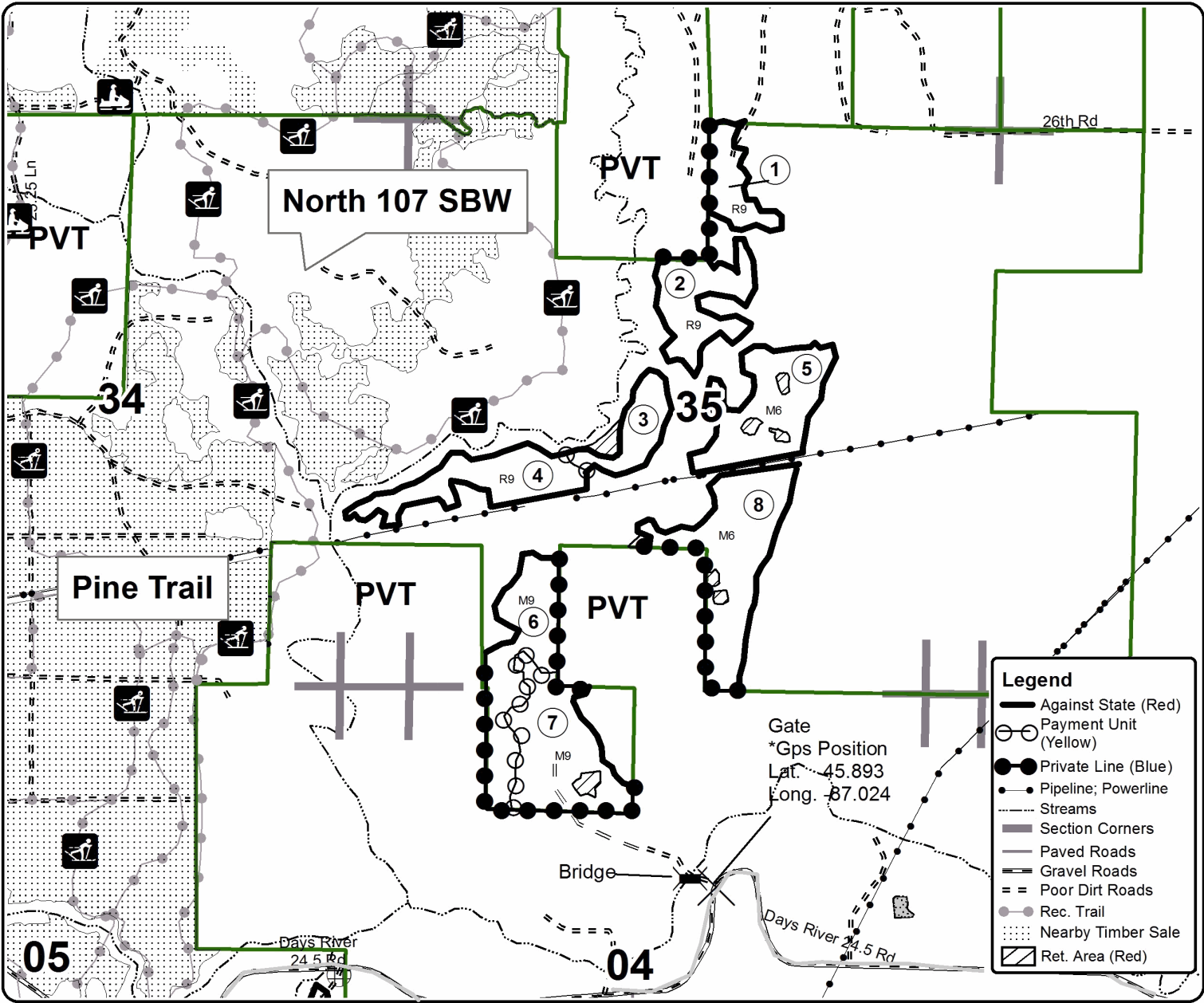
Sale Number	Year
33-011-16-01	16

Forest Management Unit	County	Mapped By	Racine	Date	Page	of
Escanaba	Delta	Cruised By	Racine	9/29/2016	1	1
Township	Range	Section(s) and Subdivision(s)	Scale			
40, 41N	22W	See Proposal	1:15,840			

Cover Type				Density	
A = Aspen	H = Hemlock	N = Marsh	U = Upland Brush	0 = Non Stocked	5 = Pole Timber Medium
B = Paper Birch	J = Jack Pine	O = Oak	UM = Upland Mixed	1 = Seedling Sapling Poor	6 = Pole Timber Well
C = Cedar	L = Lowland Brush	P = Lowland Poplar	V = Bog or Marsh	2 = Seedling Sapling Medium	7 = Saw Timber Poor
D = Treed Bog	LM = Lowland Mixed	Q = Mixed Swamp Conifer	W = White Pine	3 = Seedling Sapling Well	8 = Saw Timber Medium
E = Swamp Hdwoods	M = Mpl, Bch, Brch	R = Red Pine	X = Non Stocked	4 = Pole Timber Poor	9 = Saw Timber Well
F = Spruce Fir	MC = Mixed Conifer	S = Black Spruce	Z = Water		
G = Grass	MD = Mixed Deciduous	T = Tamarack			

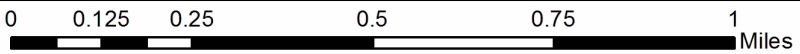
PU	Acres	PU	Acres	PU	Acres
1	7.2	4	17.4	7	21.6
2	14.2	5	20.6	8	25.3
3	9.4	6	19.7		

**Over the Bridge**  
**Compartment 107**  
**135.4 Acres**



**Legend**

- Against State (Red)
- Payment Unit (Yellow)
- Private Line (Blue)
- Pipeline; Powerline
- Streams
- Section Corners
- Paved Roads
- Gravel Roads
- == Poor Dirt Roads
- Rec. Trail
- ⋯ Nearby Timber Sale
- ▨ Ret. Area (Red)







North and West of Rapid (33-008-16)  
 ; Delta COUNTY

In response to the notice of sale to be held 3:00 p.m. (local time) on January 10, 2017, I am hereby submitting my sealed bid (firm offer) for the following forest products to be cut. Bids for individual species must be at or above the advertised price. All non-responsive bid forms may be rejected.

<u>PRODUCTS &amp; SPECIES</u>	<u>ESTIMATED VOLUME*</u>	<u>ADVERTISED PRICE</u>	<u>BID PRICE</u>
<b>Sawtimber</b>			
Green Ash	0.80 MBF	\$ 91.00/MBF	\$ _____
Paper Birch	0.50 MBF	\$ 98.00/MBF	\$ _____
Red Maple	6.90 MBF	\$ 206.00/MBF	\$ _____
<b>Pulpwood</b>			
Balsam Fir	58.00 Cords	\$ 24.65/Cord	\$ _____
Mixed Hardwood	326.00 Cords	\$ 31.10/Cord	\$ _____
Mixed Spruce	22.00 Cords	\$ 22.55/Cord	\$ _____
Quaking Aspen	2.00 Cords	\$ 30.65/Cord	\$ _____
Tamarack	6.00 Cords	\$ 15.45/Cord	\$ _____

\*The volumes are statistically estimated within plus (+) or minus (-) 19.10 percent. These estimated volumes are final and not subject to adjustment. Prospective bidders are urged to examine this timber and to make their own estimates of quantity and quality.

I understand that any or all bids may be rejected. All bids must be signed and all bid items must be bid or the bid form may be rejected. I also understand that consideration and awarding a contract will be based upon my past performance and ability to complete the contract based upon equipment and staffing subject to my control.

FEDERAL ID: \_\_\_\_\_ or SOCIAL SECURITY NUMBER: \_\_\_\_\_

Company or individual bidding: \_\_\_\_\_

Company representative's name: \_\_\_\_\_

Address: \_\_\_\_\_

City: \_\_\_\_\_ State: \_\_\_\_\_ Zip: \_\_\_\_\_

IF AVAILABLE, PLEASE PLACE THE PERSONALIZED LABEL FROM YOUR PROSPECTUS IN THE ABOVE BOX.

Individual or company representative's signature: \_\_\_\_\_ Date: \_\_\_\_\_

Phone number : \_\_\_\_\_ Email (optional): \_\_\_\_\_

**THE WINNING BIDDER MUST COMPLETE THE VERIFICATION OF WORKER'S DISABILITY COMPENSATION ACT COMPLIANCE (ON REVERSE SIDE IF DOUBLE SIDED) WITHIN 21 DAYS OF SALE AWARD DATE**



<b>FOR DEPARTMENT USE ONLY</b>
Sale Number (XX - XXX - XX - XX)
Forest Management Unit:

## TIMBER SALE VERIFICATION OF WORKER'S DISABILITY COMPENSATION ACT COMPLIANCE

*As required by Act 317, P.A. 1969 (Worker's Compensation) and  
Part 5 of Act 451 of 1994, as amended.*

### VERIFICATION OF WORKER'S DISABILITY COMPENSATION ACT COMPLIANCE

- This verification must be completed and submitted within 21 days of contract award and prior to the issuance of the timber sale contract.
- In addition, if boxes 2B or 2C are checked, then Notice of Exclusion or Certificate of Insurance must be submitted within twenty-one (21) days of the contract award and prior to the issuance of the timber sale contract.
- All information must be typed or printed except for written signatures.

Please Check Appropriate Categories:

1. My business is organized as (you **must** check one of the boxes below):
  - A.  Sole Proprietorship (individual)
  - B.  Partnership
  - C.  Corporation
2. You **must** check one of the boxes below:
  - A.  I certify my business is a sole proprietorship and it has no employees but the sole proprietor. I am not subject to the Worker's Compensation Laws.
  - B.  I certify my business has satisfied its obligation to the Worker's Compensation Act through the use of an approved Notice of Exclusion (BWC-337, Rev. 5/96). I will provide a copy of the Notice of Exclusion within 21 days of the contract award. (For questions or a copy of the BWC-337, please call the Worker's Compensation Bureau at 517-322-1195).
  - C.  I certify my business has a Worker's Compensation Policy. I will provide an original Certificate of Insurance within twenty-one (21) days of the contract award.
3. If you have checked item 2(A) or 2(B), you **must** indicate the number of **both** full-time and part-time employees, other than yourself, including family members and active partners (if none, you must enter "0").

\_\_\_\_\_ Full-time Employees

\_\_\_\_\_ Part-time Employees

Name of Business		Federal ID (or) Social Security No.	
Address		Telephone (       )	
City	State	ZIP	

*I hereby certify that the above information is true and correct. I agree to notify the Michigan DNR of any changes that occur in factors affecting my coverage during any of my present and future operations.*

\_\_\_\_\_  
Signature of Owner or Authorized Representative

\_\_\_\_\_  
Title

\_\_\_\_\_  
Date

**Please complete the "SEALED BID" information on the next page**

East of Rapid (33-002-16)  
 ; Delta COUNTY

In response to the notice of sale to be held 3:00 p.m. (local time) on January 10, 2017, I am hereby submitting my sealed bid (firm offer) for the following forest products to be cut. Bids for individual species must be at or above the advertised price. All non-responsive bid forms may be rejected.

<u>PRODUCTS &amp; SPECIES</u>	<u>ESTIMATED VOLUME*</u>	<u>ADVERTISED PRICE</u>	<u>BID PRICE</u>
<b>Sawtimber</b>			
Paper Birch	1.00 MBF	\$ 113.00/MBF	\$ _____
Red Maple	21.10 MBF	\$ 237.00/MBF	\$ _____
Sugar Maple	8.20 MBF	\$ 414.00/MBF	\$ _____
Yellow Birch	1.30 MBF	\$ 83.00/MBF	\$ _____
<b>Pulpwood</b>			
Balsam Fir	119.00 Cords	\$ 28.45/Cord	\$ _____
Mixed Hardwood	582.00 Cords	\$ 35.90/Cord	\$ _____
Mixed Spruce	99.00 Cords	\$ 26.00/Cord	\$ _____
N. White Cedar	20.00 Cords	\$ 35.15/Cord	\$ _____
Quaking Aspen	143.00 Cords	\$ 35.40/Cord	\$ _____
Tamarack	103.00 Cords	\$ 17.85/Cord	\$ _____

\*The volumes are statistically estimated within plus (+) or minus (-) 14.53 percent. These estimated volumes are final and not subject to adjustment. Prospective bidders are urged to examine this timber and to make their own estimates of quantity and quality.

I understand that any or all bids may be rejected. All bids must be signed and all bid items must be bid or the bid form may be rejected. I also understand that consideration and awarding a contract will be based upon my past performance and ability to complete the contract based upon equipment and staffing subject to my control.

FEDERAL ID: \_\_\_\_\_ or SOCIAL SECURITY NUMBER: \_\_\_\_\_

Company or individual bidding: \_\_\_\_\_

Company representative's name: \_\_\_\_\_

Address: \_\_\_\_\_

City: \_\_\_\_\_ State: \_\_\_\_\_ Zip: \_\_\_\_\_

IF AVAILABLE, PLEASE PLACE THE PERSONALIZED LABEL FROM YOUR PROSPECTUS IN THE ABOVE BOX.

Individual or company representative's signature: \_\_\_\_\_ Date: \_\_\_\_\_

Phone number : \_\_\_\_\_ Email (optional): \_\_\_\_\_

**THE WINNING BIDDER MUST COMPLETE THE VERIFICATION OF WORKER'S DISABILITY COMPENSATION ACT COMPLIANCE (ON REVERSE SIDE IF DOUBLE SIDED) WITHIN 21 DAYS OF SALE AWARD DATE**



<b>FOR DEPARTMENT USE ONLY</b>
Sale Number (XX - XXX - XX - XX)
Forest Management Unit:

## TIMBER SALE VERIFICATION OF WORKER'S DISABILITY COMPENSATION ACT COMPLIANCE

*As required by Act 317, P.A. 1969 (Worker's Compensation) and  
Part 5 of Act 451 of 1994, as amended.*

### VERIFICATION OF WORKER'S DISABILITY COMPENSATION ACT COMPLIANCE

- This verification must be completed and submitted within 21 days of contract award and prior to the issuance of the timber sale contract.
- In addition, if boxes 2B or 2C are checked, then Notice of Exclusion or Certificate of Insurance must be submitted within twenty-one (21) days of the contract award and prior to the issuance of the timber sale contract.
- All information must be typed or printed except for written signatures.

Please Check Appropriate Categories:

1. My business is organized as (you **must** check one of the boxes below):
  - A.  Sole Proprietorship (individual)
  - B.  Partnership
  - C.  Corporation
2. You **must** check one of the boxes below:
  - A.  I certify my business is a sole proprietorship and it has no employees but the sole proprietor. I am not subject to the Worker's Compensation Laws.
  - B.  I certify my business has satisfied its obligation to the Worker's Compensation Act through the use of an approved Notice of Exclusion (BWC-337, Rev. 5/96). I will provide a copy of the Notice of Exclusion within 21 days of the contract award. (For questions or a copy of the BWC-337, please call the Worker's Compensation Bureau at 517-322-1195).
  - C.  I certify my business has a Worker's Compensation Policy. I will provide an original Certificate of Insurance within twenty-one (21) days of the contract award.
3. If you have checked item 2(A) or 2(B), you **must** indicate the number of **both** full-time and part-time employees, other than yourself, including family members and active partners (if none, you must enter "0").

\_\_\_\_\_ Full-time Employees

\_\_\_\_\_ Part-time Employees

Name of Business		Federal ID (or) Social Security No.	
Address		Telephone (       )	
City	State	ZIP	

*I hereby certify that the above information is true and correct. I agree to notify the Michigan DNR of any changes that occur in factors affecting my coverage during any of my present and future operations.*

\_\_\_\_\_  
Signature of Owner or Authorized Representative

\_\_\_\_\_  
Title

\_\_\_\_\_  
Date

**Please complete the "SEALED BID" information on the next page**

Pine Trail (33-009-16)  
 ; Delta COUNTY

In response to the notice of sale to be held 3:00 p.m. (local time) on January 10, 2017, I am hereby submitting my sealed bid (firm offer) for the following forest products to be cut. Bids for individual species must be at or above the advertised price. All non-responsive bid forms may be rejected.

<u>PRODUCTS &amp; SPECIES</u>	<u>ESTIMATED VOLUME*</u>	<u>ADVERTISED PRICE</u>	<u>BID PRICE</u>
<b>Sawtimber</b>			
Paper Birch	2.00 MBF	\$ 113.00/MBF	\$ _____
Red Maple	0.50 MBF	\$ 237.00/MBF	\$ _____
<b>Pulpwood</b>			
Balsam Fir	49.00 Cords	\$ 28.45/Cord	\$ _____
Jack Pine	7.00 Cords	\$ 48.50/Cord	\$ _____
Mixed Hardwood	43.00 Cords	\$ 35.90/Cord	\$ _____
Mixed Spruce	378.00 Cords	\$ 26.00/Cord	\$ _____
N. White Cedar	106.00 Cords	\$ 35.15/Cord	\$ _____
Quaking Aspen	70.00 Cords	\$ 35.40/Cord	\$ _____
Red Pine	5,330.00 Cords	\$ 77.55/Cord	\$ _____
Tamarack	10.00 Cords	\$ 17.85/Cord	\$ _____

\*The volumes are statistically estimated within plus (+) or minus (-) 12.12 percent. These estimated volumes are final and not subject to adjustment. Prospective bidders are urged to examine this timber and to make their own estimates of quantity and quality.

I understand that any or all bids may be rejected. All bids must be signed and all bid items must be bid or the bid form may be rejected. I also understand that consideration and awarding a contract will be based upon my past performance and ability to complete the contract based upon equipment and staffing subject to my control.

FEDERAL ID: \_\_\_\_\_ or SOCIAL SECURITY NUMBER: \_\_\_\_\_

Company or individual bidding: \_\_\_\_\_

Company representative's name: \_\_\_\_\_

Address: \_\_\_\_\_

City: \_\_\_\_\_ State: \_\_\_\_\_ Zip: \_\_\_\_\_

IF AVAILABLE, PLEASE PLACE THE PERSONALIZED LABEL FROM YOUR PROSPECTUS IN THE ABOVE BOX.

Individual or company representative's signature: \_\_\_\_\_ Date: \_\_\_\_\_

Phone number : \_\_\_\_\_ Email (optional): \_\_\_\_\_

**THE WINNING BIDDER MUST COMPLETE THE VERIFICATION OF WORKER'S DISABILITY COMPENSATION ACT COMPLIANCE (ON REVERSE SIDE IF DOUBLE SIDED) WITHIN 21 DAYS OF SALE AWARD DATE**



<b>FOR DEPARTMENT USE ONLY</b>
Sale Number (XX - XXX - XX - XX)
Forest Management Unit:

## TIMBER SALE VERIFICATION OF WORKER'S DISABILITY COMPENSATION ACT COMPLIANCE

*As required by Act 317, P.A. 1969 (Worker's Compensation) and  
Part 5 of Act 451 of 1994, as amended.*

### VERIFICATION OF WORKER'S DISABILITY COMPENSATION ACT COMPLIANCE

- This verification must be completed and submitted within 21 days of contract award and prior to the issuance of the timber sale contract.
- In addition, if boxes 2B or 2C are checked, then Notice of Exclusion or Certificate of Insurance must be submitted within twenty-one (21) days of the contract award and prior to the issuance of the timber sale contract.
- All information must be typed or printed except for written signatures.

Please Check Appropriate Categories:

1. My business is organized as (you **must** check one of the boxes below):
  - A.  Sole Proprietorship (individual)
  - B.  Partnership
  - C.  Corporation
  
2. You **must** check one of the boxes below:
  - A.  I certify my business is a sole proprietorship and it has no employees but the sole proprietor. I am not subject to the Worker's Compensation Laws.
  - B.  I certify my business has satisfied its obligation to the Worker's Compensation Act through the use of an approved Notice of Exclusion (BWC-337, Rev. 5/96). I will provide a copy of the Notice of Exclusion within 21 days of the contract award. (For questions or a copy of the BWC-337, please call the Worker's Compensation Bureau at 517-322-1195).
  - C.  I certify my business has a Worker's Compensation Policy. I will provide an original Certificate of Insurance within twenty-one (21) days of the contract award.
  
3. If you have checked item 2(A) or 2(B), you **must** indicate the number of **both** full-time and part-time employees, other than yourself, including family members and active partners (if none, you must enter "0").

\_\_\_\_\_ Full-time Employees

\_\_\_\_\_ Part-time Employees

Name of Business		Federal ID (or) Social Security No.	
Address		Telephone (       )	
City	State	ZIP	

*I hereby certify that the above information is true and correct. I agree to notify the Michigan DNR of any changes that occur in factors affecting my coverage during any of my present and future operations.*

\_\_\_\_\_  
Signature of Owner or Authorized Representative

\_\_\_\_\_  
Title

\_\_\_\_\_  
Date

**Please complete the "SEALED BID" information on the next page**

FORM

Minnewaska (33-010-16)

; Delta COUNTY

In response to the notice of sale to be held 3:00 p.m. (local time) on January 10, 2017, I am hereby submitting my sealed bid (firm offer) for the following forest products to be cut. Bids for individual species must be at or above the advertised price. All non-responsive bid forms may be rejected.

<u>PRODUCTS &amp; SPECIES</u>	<u>ESTIMATED VOLUME*</u>	<u>ADVERTISED PRICE</u>	<u>BID PRICE</u>
<b>Sawtimber</b>			
Red Maple	1.20 MBF	\$ 237.00/MBF	\$ _____
<b>Pulpwood</b>			
Balsam Fir	3.00 Cords	\$ 28.45/Cord	\$ _____
Black Spruce	90.00 Cords	\$ 26.00/Cord	\$ _____
Jack Pine	62.00 Cords	\$ 48.50/Cord	\$ _____
Mixed Hardwood	39.00 Cords	\$ 35.90/Cord	\$ _____
N. White Cedar	112.00 Cords	\$ 35.15/Cord	\$ _____
Quaking Aspen	7.00 Cords	\$ 35.40/Cord	\$ _____
Red Pine	571.00 Cords	\$ 61.45/Cord	\$ _____
Tamarack	143.00 Cords	\$ 17.85/Cord	\$ _____
White Pine	32.00 Cords	\$ 40.75/Cord	\$ _____

\*The volumes are statistically estimated within plus (+) or minus (-) 13.20 percent. These estimated volumes are final and not subject to adjustment. Prospective bidders are urged to examine this timber and to make their own estimates of quantity and quality.

I understand that any or all bids may be rejected. All bids must be signed and all bid items must be bid or the bid form may be rejected. I also understand that consideration and awarding a contract will be based upon my past performance and ability to complete the contract based upon equipment and staffing subject to my control.

FEDERAL ID: \_\_\_\_-\_\_\_\_-\_\_\_\_ or SOCIAL SECURITY NUMBER: \_\_\_\_-\_\_\_\_-\_\_\_\_

Company or individual bidding: \_\_\_\_\_

Company representative's name: \_\_\_\_\_

Address: \_\_\_\_\_

City: \_\_\_\_\_ State: \_\_\_\_\_ Zip: \_\_\_\_\_

IF AVAILABLE, PLEASE PLACE THE PERSONALIZED LABEL FROM YOUR PROSPECTUS IN THE ABOVE BOX.

Individual or company representative's signature: \_\_\_\_\_ Date: \_\_\_\_\_

Phone number : \_\_\_\_\_ Email (optional): \_\_\_\_\_

**THE WINNING BIDDER MUST COMPLETE THE VERIFICATION OF WORKER'S DISABILITY COMPENSATION ACT COMPLIANCE (ON REVERSE SIDE IF DOUBLE SIDED) WITHIN 21 DAYS OF SALE AWARD DATE**



<b>FOR DEPARTMENT USE ONLY</b>
Sale Number (XX - XXX - XX - XX)
Forest Management Unit:

## TIMBER SALE VERIFICATION OF WORKER'S DISABILITY COMPENSATION ACT COMPLIANCE

*As required by Act 317, P.A. 1969 (Worker's Compensation) and  
Part 5 of Act 451 of 1994, as amended.*

### VERIFICATION OF WORKER'S DISABILITY COMPENSATION ACT COMPLIANCE

- This verification must be completed and submitted within 21 days of contract award and prior to the issuance of the timber sale contract.
- In addition, if boxes 2B or 2C are checked, then Notice of Exclusion or Certificate of Insurance must be submitted within twenty-one (21) days of the contract award and prior to the issuance of the timber sale contract.
- All information must be typed or printed except for written signatures.

Please Check Appropriate Categories:

1. My business is organized as (you **must** check one of the boxes below):
  - A.  Sole Proprietorship (individual)
  - B.  Partnership
  - C.  Corporation
  
2. You **must** check one of the boxes below:
  - A.  I certify my business is a sole proprietorship and it has no employees but the sole proprietor. I am not subject to the Worker's Compensation Laws.
  - B.  I certify my business has satisfied its obligation to the Worker's Compensation Act through the use of an approved Notice of Exclusion (BWC-337, Rev. 5/96). I will provide a copy of the Notice of Exclusion within 21 days of the contract award. (For questions or a copy of the BWC-337, please call the Worker's Compensation Bureau at 517-322-1195).
  - C.  I certify my business has a Worker's Compensation Policy. I will provide an original Certificate of Insurance within twenty-one (21) days of the contract award.
  
3. If you have checked item 2(A) or 2(B), you **must** indicate the number of **both** full-time and part-time employees, other than yourself, including family members and active partners (if none, you must enter "0").

\_\_\_\_\_ Full-time Employees

\_\_\_\_\_ Part-time Employees

Name of Business		Federal ID (or) Social Security No.	
Address		Telephone (       )	
City	State	ZIP	

*I hereby certify that the above information is true and correct. I agree to notify the Michigan DNR of any changes that occur in factors affecting my coverage during any of my present and future operations.*

\_\_\_\_\_  
Signature of Owner or Authorized Representative

\_\_\_\_\_  
Title

\_\_\_\_\_  
Date

**Please complete the "SEALED BID" information on the next page**



FORM

Over the Bridge (33-011-16)  
; Delta COUNTY

In response to the notice of sale to be held 3:00 p.m. (local time) on January 10, 2017, I am hereby submitting my sealed bid (firm offer) for the following forest products to be cut. Bids for individual species must be at or above the advertised price. All non-responsive bid forms may be rejected.

PRODUCTS & SPECIES	ESTIMATED VOLUME*	ADVERTISED PRICE	BID PRICE
<b>Sawtimber</b>			
Beech	5.30 MBF	\$ 74.00/MBF	\$ _____
Paper Birch	5.90 MBF	\$ 113.00/MBF	\$ _____
Red Maple	59.00 MBF	\$ 237.00/MBF	\$ _____
Red Oak	1.10 MBF	\$ 201.00/MBF	\$ _____
White Pine	2.80 MBF	\$ 75.00/MBF	\$ _____
Yellow Birch	2.70 MBF	\$ 83.00/MBF	\$ _____
<b>Pulpwood</b>			
Balsam Fir	119.00 Cords	\$ 28.45/Cord	\$ _____
Hemlock	5.00 Cords	\$ 22.50/Cord	\$ _____
Jack Pine	2.00 Cords	\$ 48.50/Cord	\$ _____
Mixed Hardwood	1,129.00 Cords	\$ 35.90/Cord	\$ _____
Mixed Spruce	25.00 Cords	\$ 26.00/Cord	\$ _____
N. White Cedar	4.00 Cords	\$ 35.15/Cord	\$ _____
Quaking Aspen	15.00 Cords	\$ 35.40/Cord	\$ _____
Red Pine	395.00 Cords	\$ 61.45/Cord	\$ _____
White Pine	46.00 Cords	\$ 40.75/Cord	\$ _____

\*The volumes are statistically estimated within plus (+) or minus (-) 9.51 percent. These estimated volumes are final and not subject to adjustment. Prospective bidders are urged to examine this timber and to make their own estimates of quantity and quality.

I understand that any or all bids may be rejected. All bids must be signed and all bid items must be bid or the bid form may be rejected. I also understand that consideration and awarding a contract will be based upon my past performance and ability to complete the contract based upon equipment and staffing subject to my control.

FEDERAL ID: \_\_\_\_\_ or SOCIAL SECURITY NUMBER: \_\_\_\_\_

Company or individual bidding: \_\_\_\_\_

Company representative's name: \_\_\_\_\_

Address: \_\_\_\_\_

City: \_\_\_\_\_ State: \_\_\_\_\_ Zip: \_\_\_\_\_

IF AVAILABLE, PLEASE PLACE THE PERSONALIZED LABEL FROM YOUR PROSPECTUS IN THE ABOVE BOX.

Individual or company representative's signature: \_\_\_\_\_ Date: \_\_\_\_\_

Phone number : \_\_\_\_\_ Email (optional): \_\_\_\_\_

**THE WINNING BIDDER MUST COMPLETE THE VERIFICATION OF WORKER'S DISABILITY COMPENSATION ACT COMPLIANCE (ON REVERSE SIDE IF DOUBLE SIDED) WITHIN 21 DAYS OF SALE AWARD DATE**



<b>FOR DEPARTMENT USE ONLY</b>
Sale Number (XX – XXX – XX – XX)
Forest Management Unit:

## TIMBER SALE VERIFICATION OF WORKER'S DISABILITY COMPENSATION ACT COMPLIANCE

*As required by Act 317, P.A. 1969 (Worker's Compensation) and  
Part 5 of Act 451 of 1994, as amended.*

### VERIFICATION OF WORKER'S DISABILITY COMPENSATION ACT COMPLIANCE

- This verification must be completed and submitted within 21 days of contract award and prior to the issuance of the timber sale contract.
- In addition, if boxes 2B or 2C are checked, then Notice of Exclusion or Certificate of Insurance must be submitted within twenty-one (21) days of the contract award and prior to the issuance of the timber sale contract.
- All information must be typed or printed except for written signatures.

Please Check Appropriate Categories:

1. My business is organized as (you **must** check one of the boxes below):
  - A.  Sole Proprietorship (individual)
  - B.  Partnership
  - C.  Corporation
2. You **must** check one of the boxes below:
  - A.  I certify my business is a sole proprietorship and it has no employees but the sole proprietor. I am not subject to the Worker's Compensation Laws.
  - B.  I certify my business has satisfied its obligation to the Worker's Compensation Act through the use of an approved Notice of Exclusion (BWC-337, Rev. 5/96). I will provide a copy of the Notice of Exclusion within 21 days of the contract award. (For questions or a copy of the BWC-337, please call the Worker's Compensation Bureau at 517-322-1195).
  - C.  I certify my business has a Worker's Compensation Policy. I will provide an original Certificate of Insurance within twenty-one (21) days of the contract award.
3. If you have checked item 2(A) or 2(B), you **must** indicate the number of **both** full-time and part-time employees, other than yourself, including family members and active partners (if none, you must enter "0").

\_\_\_\_\_ Full-time Employees

\_\_\_\_\_ Part-time Employees

Name of Business		Federal ID (or) Social Security No.	
Address		Telephone (       )	
City	State	ZIP	

*I hereby certify that the above information is true and correct. I agree to notify the Michigan DNR of any changes that occur in factors affecting my coverage during any of my present and future operations.*

\_\_\_\_\_  
Signature of Owner or Authorized Representative

\_\_\_\_\_  
Title

\_\_\_\_\_  
Date

**Please complete the "SEALED BID" information on the next page**