



**DEPARTMENT OF NATURAL RESOURCES
STATE OF MICHIGAN**

TIMBER SALE PROSPECTUS #5924

SCHEDULED SALE DATE AND TIME: 3:00 p.m. (local time) on May 15, 2017.

LOCATION: **GWINN MGMT UNIT, 410 WEST M-35, GWINN, MI 49841.**

PROSPECTUS NOTE: Please note the sales advertised on this prospectus are part of a research project and have a research related free extension available to use on another sale. See specification 7.2.7. They have a short contract length as well research specific sale specifications.

The bidder is advised to inspect the sale area and review the location, estimated volumes, operating costs and contract terms of proposed sales. Please be aware that some landowners may request 60 days or more notice for access across their land.

Notice is hereby given that bids will be received by the Unit Manager, GWINN MANAGEMENT UNIT, for certain timber Watson Shortcut MWR (32-007-17)

Marquette County, Advertised Price \$58,853.80, 60.5 Acres, Hardwood, Sugar Maple.

SALE NOTE: This sale is part of a large research project and as a result has specific harvesting requirements. Onsite review prior to bidding is highly recommended. No extensions will be allowed on this sale. However, with stipulations (see spec 7.2.7), a free 1 year extension can be applied to another State Forest Timber Sale Contract.

Ladoga/Paulson MWR (32-008-17)

Alger County, Advertised Price \$11,166.70, 60.0 Acres, Hardwood, Sugar Maple.

SALE NOTE: This sale is part of a large research project and as a result has specific harvesting requirements. Onsite review prior to bidding is highly recommended. No extensions will be allowed on this sale. However, with stipulations (see spec 7.2.7), a free 1 year extension can be applied to another State Forest Timber Sale Contract.

Access may be through private or other public land.

West Gem MWR (32-010-17)

Marquette County, Advertised Price \$24,889.80, 59.2 Acres, Hardwood, Sugar Maple.

SALE NOTE: This sale is part of a large research project and as a result has specific harvesting requirements. Onsite review prior to bidding is highly recommended. No extensions will be allowed on this sale. However, with stipulations (see spec 7.2.7), a free 1 year extension can be applied to another State Forest Timber Sale Contract.

Engman Lake MWR (32-011-17)

Marquette County, Advertised Price \$18,958.50, 30.0 Acres, Hardwood, Sugar Maple.

SALE NOTE: This sale is part of a large research project and as a result has specific harvesting requirements. Onsite review prior to bidding is highly recommended. No extensions will be allowed on this sale. However, with stipulations (see spec 7.2.7), a free 1 year extension can be applied to another State Forest Timber Sale Contract.

Access may be through private or other public land.

Grimms Lake MWR (32-013-17)

Marquette County, Advertised Price \$26,621.10, 30.3 Acres, Hardwood, Sugar Maple.

SALE NOTE: This sale is part of a large research project and as a result has specific harvesting requirements. Onsite review prior to bidding is highly recommended. No extensions will be allowed on this sale. However, with stipulations (see spec 7.2.7), a free 1 year extension can be applied to another State Forest Timber Sale Contract.

Access may be through private or other public land.

BID INSTRUCTIONS (VER. 09/02/2016):

1. Scheduled Bid Location, Date, and Time (2/11)

Bids must be received by the Unit Manager, GWINN OFFICE, 410 WEST M-35, GWINN, MI 49841, no later than 3:00 p.m. (local time) on May 15, 2017. For further information concerning this sale, contact Tom Seablom at 906-346-9201.

2. Bidder's Qualifications (5/16)

Purchaser shall obtain workers compensation insurance to cover claims under Michigan's Worker's Disability Compensation Act of 1969 or similar employee benefit act of any other state applicable to an employee. If all or part of a timber sale was prepared by a private contractor, the contractor and that contractor's company are not permitted to bid on the timber sale contract. Bids will not be accepted from individuals or companies appearing on the DNR/FRD No-Bid List. This list contains the names of purchasers who previously failed to execute a contract within 21-days or who have a history of poor performance.

3. Preparation of Sealed Bids (5/16)

Bid Forms may be completed online thru Michigan DNR Timber Sale Online Bidding (OLB) at www.michigan.gov/timberbidding or by completing the hardcopy Bid Form found in the Timber Sale Prospectus. Hardcopy Bid Forms shall be manually signed in ink. Registration in OLB is considered your 'signature' for all bids submitted thru that system. Bid prices must be entered for each species and product in the Bid Price column for all material subject to bidding and all fill-in blanks must be completed. If erasures or other changes appear on the hardcopy Bid Form, each erasure or change must be initialed by the person signing the bid.

4. Submission of Sealed Bids (5/16)

Bid forms may be obtained from the Unit Manager or thru OLB. Bids may be submitted hardcopy or thru OLB. All hardcopy bids must be submitted on the bid form and in an envelope clearly identified as described in this section. NOTE: Only one bid form per bid envelope. Sealed bids must be submitted to the Unit office designated in the prospectus and must be submitted at or prior to the time established in the prospectus. The envelope should show on the outside (a) the sale name or number and (b) the date and time of bid opening, as shown in the prospectus. Bids received after the time specified in the sale prospectus are late bids and will be rejected.

It is possible for a bidder to submit multiple bids on a single sale. For example, a bid may be submitted hardcopy and a bid may be submitted thru OLB. Or, two bidders from the same company could both submit bids on the same sale. If this were to happen, the State would accept all bids received and award the contract accordingly. All bidding and contractual requirements would apply to all bids received.

5. Public Opening of Sealed Bids (7/16)

If conditions permit, the sealed bids will be publicly opened and posted at the time and place set in the prospectus.

If a bidder, present at a bid opening, has submitted bids on more than one sale, that bidder may withdraw their unopened bid envelopes or announce the withdrawal of their online bid after being declared the successful bidder on one sale.

6. Award of Contract (1/11)

Award of the contract will be made to the Bidder whose bid, conforming to the prospectus, is most advantageous to the State of Michigan on the basis of total value at rates bid for the estimated quantities. The State reserves the right to reject any bid or waive any minor irregularity in bids received. A written award mailed (or otherwise furnished) to the successful Bidder shall be deemed to result in a binding contract without further action by either party.

7. Down Payment (1/11)

The Bidder to whom award is made must make a down payment within 21 days of the sale award. The amount of the down payment will be calculated as shown in the Bond and Payment Schedule of this prospectus. Only cash may be used to meet this requirement.

8. Performance Security (1/11)

As guarantee of faithful performance, a cash bond, certificate of deposit, surety bond or irrevocable letter of credit (LOC) is required within 21 days of the sale award. The amount of the performance security is shown in the Bond and

Payment Schedule of this prospectus. If an LOC or surety is used, the coverage must extend for at least 6 months beyond the contract expiration.

9. Timber Sale Contract (9/14)

Additional conditions and requirements common to all timber sales are listed on the timber sale contract (R4031) and are available on line at www.michigan.gov/timber. Contact the Unit Manager for additional information or a sample contract. Within 21 days of the date of the award letter, the bidder must sign the contract and provide the required down payment, performance security, and verification of worker's disability compensation. The down payment and performance security shall be in accordance with the provisions of the timber sale contract, in the sums stated in this prospectus. If these actions are not taken, then the Bidder, the Bidder's corporation, and the corporation's principals may not be permitted to bid on State timber sales for a period of 1 year. In addition, the Bidder certifies that if awarded this contract, the Bidder will complete the timber sale contract in accordance with its terms and any modifications thereof including requirements to purchase, cut, and remove the included timber by the expiration date.

10. Disclaimer of Estimates and Bidder's Warranty of Inspection (7/16)

Before submitting this bid, the Bidder is advised and cautioned to inspect the sale area, review the requirements of the sale contract, and take other steps as may be reasonably necessary to ascertain the location, estimated volumes, construction estimates, and operating costs of the proposed sale. Failure to do so will not relieve the Bidder from responsibility for completing the contract.

The Bidder warrants that this bid is submitted solely on the basis of the Bidder's examination and inspection of the quality and quantity of the timber offered for sale and the Bidder's opinion of the value thereof and the costs of recovery. No reliance should be placed on the State of Michigan's estimates of timber quality, quantity or costs of recovery. Bidder further acknowledges that the State of Michigan: (i) expressly disclaims any warranty of fitness of timber for any purpose; (ii) offers this timber as is without any warranty of quality (merchantability) or quantity and (iii) expressly disclaims any warranty as to the quantity or quality of timber sold.

11. Certification and Chain-of-Custody (10/14)

Unless otherwise indicated in the contract under section 7 – Other Conditions of the Sale Specific Conditions & Requirements, the area encompassed by this timber sale is certified to the standards of the Forest Stewardship Council (FSC) - Certificate #SCS-FM/COC-00090N and the Sustainable Forestry Initiative (SFI) - Certificate # NSF-SFIS-5Y031-SF5. Forest products from this sale may be delivered to the mill as "FSC 100% and / or SFI certified" as long as the contractor hauling the forest products is chain-of-custody (COC) certified or covered under a COC certificate from the destination mill. The purchaser is responsible for maintaining COC after leaving the sale area.

12. Good Neighbor Authority (GNA) Requirements (7/16)

If the name of this timber sales contains the acronym GNA, it is authorized by the Good Neighbor Authority (GNA) and covered by various agreements between the U.S. Forest Service and the State. The timber sale occurs on federal land and the following conditions apply:

GNA contracts on US Forest Service land will not be awarded to purchasers on the Federal list of excluded parties. The System for Award Management (SAM) will be checked for active excluded parties prior to award of contract. In addition, the Bidder to whom award is made must complete an Assurance Regarding Felony Conviction or Tax Delinquent Status for Corporate Applicants (AD-3031).

13. Good Neighbor Authority (GNA) Requirements, con't (9/16)

Bidder certifies, by signing this bid form, that to the best of Bidder's knowledge that the following representations are accurate and complete.

- a. That the Bidder and its principals are not presently debarred, suspended, proposed for debarment, declared ineligible, or voluntary excluded from timber sales (covered transactions) by any Federal department or agency.
- b. That the Bidder and its principals have not within a 3-year period preceding this bid been convicted of or had a civil judgment rendered against them for commission of fraud or a criminal offense in connection with obtaining, attempting to obtain, or performing a public (Federal, State, or local) transaction or contract under a public transaction; violation of Federal or State antitrust statutes or commission of embezzlement, theft, forgery, bribery, falsification or destruction of records, making false statements, or receiving stolen property.

c. That the Bidder and its principals are not presently indicted for or otherwise criminally or civilly charged by a governmental entity (Federal, State, or local) with commission of any of the offenses enumerated in paragraph b of this certification.

d. That the Bidder and its principals have not within a 3-year period preceding this bid had one or more public transactions (Federal, State, or local) terminated for breach or default of a timber or forest product contract.

Bidders that cannot certify this requirement, in whole or in part, shall submit an explanation with their bid.

KEITH CREAGH

Director

TIMBER SALE INFORMATION

Watson Shortcut MWR (32-007-17)

Marquette County (Advertised Price \$58,853.80)

SALE NOTE: This sale is part of a large research project and as a result has specific harvesting requirements. Onsite review prior to bidding is highly recommended. No extensions will be allowed on this sale. However, with stipulations (see spec 7.2.7), a free 1 year extension can be applied to another State Forest Timber Sale Contract.

A timber sale contract for this lump sum, sealed bid timber sale will be awarded to the responsible bidder offering the highest sealed bid price. Bids must be at or above the following advertised price for each species:

<u>PRODUCTS & SPECIES</u>	<u>ESTIMATED UNITS*</u>	<u>ADVERTISED PRICE</u>
Sawtimber		
Basswood	39.50 MBF	\$ 181.00 / MBF
Sugar Maple	75.00 MBF	\$ 467.00 / MBF
Yellow Birch	6.90 MBF	\$ 86.00 / MBF
Pulpwood		
B. T. Aspen	56.00 Cords	\$ 28.65 / Cord
Balsam Fir	19.00 Cords	\$ 37.85 / Cord
Balsam Poplar	24.00 Cords	\$ 28.65 / Cord
Basswood	189.00 Cords	\$ 13.00 / Cord
Black Cherry	5.00 Cords	\$ 21.60 / Cord
Quaking Aspen	63.00 Cords	\$ 28.65 / Cord
Sugar Maple	386.00 Cords	\$ 21.60 / Cord
Yellow Birch	17.00 Cords	\$ 21.60 / Cord

* The estimated units are final and not subject to adjustment. Prospective bidders are urged to examine this timber and to make their own estimates of quantity and quality.

BOND AND PAYMENT SCHEDULE:

1. A bond in the amount of \$2,943.00 to insure faithful performance of the conditions of the contract will be deposited by the successful bidder within 21 days of the sale award.
2. Cutting in any sale or unit without the required advance payment would be considered a trespass.
3. Total payment must be paid in advance or according to the following schedule:
 - (a) Ten percent (10%) of the sale value must be paid within 21 days of the sale award.
 - (b) The 10% down payment will be credited towards the first unit cut.
4. If no cutting takes place, the 10% down payment will not be refunded.
5. Operations on the contract issued will terminate on 03/15/2018.

Description of Timber by Payment Unit (PU)

PU	MARKET GROUP	PRODUCT	QUANTITY	UNIT	ACRES	ADVERTISE PRICE	
1	Basswood	Sawtimber	22.7	MBF	30.3	\$38,720.80	
	Sugar Maple		50.9	MBF			
	Yellow Birch		4.7	MBF			
	B. T. Aspen	Pulpwood	56.0	Cords			
	Basswood		93.0	Cords			
	Quaking Aspen		52.0	Cords			
	Sugar Maple		269.0	Cords			
	Yellow Birch		15.0	Cords			
2	Basswood	Sawtimber	16.8	MBF	30.2	\$20,133.00	
	Sugar Maple		24.1	MBF			
	Yellow Birch		2.2	MBF			
	Balsam Fir	Pulpwood	19.0	Cords			
	Balsam Poplar		24.0	Cords			
	Basswood		96.0	Cords			
	Black Cherry		5.0	Cords			
	Quaking Aspen		11.0	Cords			
	Sugar Maple		117.0	Cords			
	Yellow Birch		2.0	Cords			
TOTAL:			121.4	MBF			
TOTAL:			759.0	Cords			

Sale Specific Conditions & Requirements

Sale Name: Watson Shortcut MWR

Sale Number: 32-007-17 Seq#: 1

1 - Sale Area

1.2 - Boundaries

1.2.1 - Painted boundaries (1/14)

The sale boundary is marked and identified by red paint. The painted boundary line trees are not Included Timber and are to be protected unless marked with orange paint.

2 - Timber Specifications

2.1 - Included Timber

2.1.7 - Leave tree marked unit(s) (6/14)

Within Payment Unit(s) 1 and 2, cut all trees that are two (2) inches or more at DBH except hemlock, white pine, and trees marked with green paint above and below stump height.

2.2 - Utilization

2.2.2 - Chipping required (5/14)

Payment Unit 1 must be chip harvested to facilitate follow-up scarification. Products may be produced as roundwood and forwarded to decking areas in final product length, but the tops must be left intact and skidded to the landing for chipping. If market conditions limit the practicality of chipping, the producer may skid all remaining topwood out of these payment units and scatter in locations approved by the sale administrator. Chipping or slash removal must be completed by March 15 2018. If the deadline is not met damages will be collected at a rate determined by the cost for the Department to hire a contractor to complete this specification.

2.2.3 - Stump heights (4/07)

Stump heights within Payment Unit 1 shall not exceed 12 inches for trees greater than 10 inches DBH and 4 inches for trees smaller than 10 inches DBH.

2.2.4 - Skidding length (2/14)

Skidding of unlimbed tops or lengths over 26 feet is not permissible in Payment Units 1 and 2 unless approved by the Unit Manager or his/her representative.

2.2.7 - Uncut designated trees (2/04)

Liquidated damages of \$10.00 per tree will be assessed for every marked tree not cut.

2.2.8 - Utilization and removal (5/14)

Within Payment Unit 1, all products meeting standards set forth in General Condition and Requirement 2.2 - Utilization must be removed from the unit. This slash must be chipped unless another option is negotiated with the Unit Manager or his/her representative to reduce, eliminate, and/or disperse the slash into the surrounding area.

Within Payment Unit 2, all slash less than nine inches (<9") top diameter outside bark at the small end may not be removed from the sale area, e.g. tops. These tops are to be left intact where they fall with branches remaining upright.

This is because of the research nature of this project.

3 - Payments

3.4 - Damaged Timber

3.4.1 - Damaged timber (6/14)

General Condition and Requirement 3.4 Damaged Timber, defines liquidated damages for undesignated live merchantable trees which are cut or injured. No damage is acceptable to residual merchantable trees. Within the sale area, if more than 5% of trees (> 4.5" DBH) within a specified area of the sale are damaged, liquidated damages will be assessed for all trees damaged. Rates will be in accordance with General Condition and Requirement 3.4 Damaged Timber, or at a rate of \$50 per sawtimber tree and \$5 per pole sized tree, whichever is greater.

4 - Transportation

4.1 - Construction

4.1.12 - No new roads (1/12)

No new roads will be permitted in any Payment Unit. All operations are limited to existing roads. Skid trails only will be allowed.

5 - Operations

5.1 - Notification

5.1.1 - Pre-sale conference (10/16)

A pre-sale conference on site between the Purchaser and sale administrator is required prior to beginning any operations to discuss the logging plan, landings and research requirements. The Unit Manager or his/her representative must be contacted at least 10 days in advance to schedule the conference.

5.2 - Conduct of Operations

5.2.1 - Slash

5.2.1.14 - Chipping of slash (10/08)

If tops are chipped, they must be skidded to the landing separately from the bole section of the tree. Skidding of tops must be done in such a way as to minimize damage to the residual trees. Chips shall not be stored on site.

5.2.2 - Hazard Trees/Snags

5.2.2.1 - Den trees (10/16)

Obvious hollow and/or den trees shall be protected and left standing unless they are a safety hazard.

5.2.3 - Operating Restrictions

5.2.3.1 - Operating restrictions (9/11)

Within Payment Unit(s) 1 and 2, payments must be completed and operations must begin by February 1st 2018. This restriction is due to the necessity of assuring that all operations are on schedule for timely completion of the research project.

5.2.3.2 - Operating restrictions (9/11)

Within Payment Unit(s) 1, unless changed by written agreement, cutting and skidding is limited to the period from August 15th 2017 to March 15th 2018. Within Payment Unit 2, unless changed by written agreement, cutting and skidding is limited to the period of December 1st 2017 to March 15th 2018. This restriction is due to the necessity of assuring that all operations are on schedule for timely completion of the research project.

5.2.32 - Decking/landing restoration (9/13)

All decking and landing areas must have the surface area restored to a condition equal to or better than before. This is to ensure the proper regeneration of the stand. Wood debris, chips and "cookies" from trimmings must be removed or scattered away from landing and loading areas and may not be windrowed on the edge.

5.2.38 - No decking against live trees (2/04)

Cut products may not be decked against unmarked or designated leave trees.

5.4 - Soil Protection

5.4.1 - Rutting restriction, general (7/16)

Operations are to cease immediately if equipment and weather conditions result in rutting of roads and/or skid trails which is 12 inches or greater in depth and 50 feet in length. The Unit Manager or his/her representative may restrict hauling and/or skidding if ruts exceed the specified depth. With the Unit Manager or his/her representative's approval, the Purchaser may return to the area when the risk of rutting has decreased.

5.8 - Protection of Endangered Species

5.8.5 - Protection of raptor nests (3/13)

All trees with raptor nests will be protected if found during harvesting operations. Notification will be made to the Unit Manager or his/her representative who will notify the Wildlife Biologist so an on-site evaluation and recommendation can be made, if necessary.

7 - Other Conditions

7.2 - Extensions

7.2.7 - Research extension (12/16)

This is a research sale with a short contract length. The sale must be harvested promptly. One (1), twelve (12) month extension can be applied to one (1) other State Forest Timber Sale Contract owned by the purchaser or owned by one (1) designated sub-contractor of the Purchaser that works this contract. To qualify, the contract expiration date of the contract to be extended must be within twelve (12) months from the issue date of this contract. If this is the first extension on the other State Forest Timber Sale Contract, then the 5% extension fee will be waived. If this is an additional extension, the 10% fee will be reduced to 5%. The salvage extension must be used before this contract is closed-out. This specification does not alleviate the purchaser from any contractual obligations of the extended State Forest Timber Sale Contract. Per General Condition & Requirement 7.2, extensions are at the sole discretion of the DNR.

7.3 - Contract Modifications

7.3.1 - Emerald Ash Borer

7.3.1.2 - Emerald ash borer, ash or firewood on sale (2/05)

There is ash and/or "firewood" in this sale and it is located within an emerald ash borer quarantined area. The Director of the Michigan Department of Agriculture (MDA) by the authority of Act No. 72 of the Public Acts of 1945, as amended, and Quarantine Regulation No. 620, has promulgated this quarantine to prevent the further spread of this pest and sets forth: definitions, regulated articles, regulated areas, conditions of movement, violations and penalties, and special exemptions. The Purchaser must comply with this quarantine. Contact the MDA for further information.



TIMBER SALE MAP

This information provided by authority of Part 525, 1994 PA 451, as amended.

Sale Number	Year
32-007-17	2017

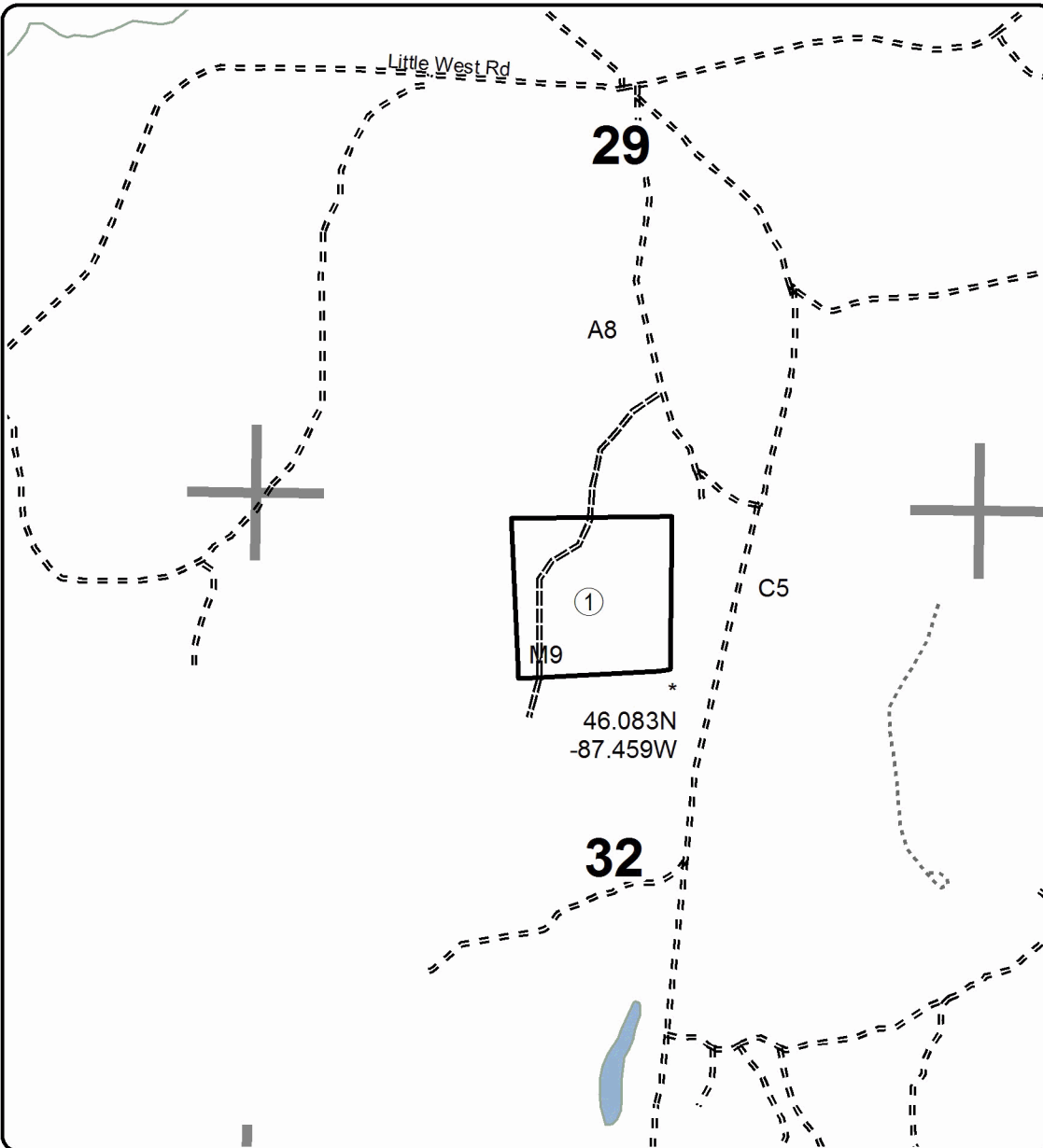
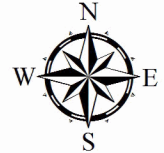
Forest Management Unit Gwinn	County Marquette	Mapped By McDonald	Date 03/16/2017	Page 1	of 2
Township 43N	Range 25W	Section(s) and Subdivision(s) Section 32, 34	Cruised By LaBumbard	Scale 1:15,840	

Cover Type				Density	
A = Aspen	H = Hemlock	N = Marsh	U = Upland Brush	0 = Non Stocked	5 = Pole Timber Medium
B = Paper Birch	J = Jack Pine	O = Oak	UM = Upland Mixed	1 = Seedling Sapling Poor	6 = Pole Timber Well
C = Cedar	L = Lowland Brush	P = Lowland Poplar	V = Bog or Marsh	2 = Seedling Sapling Medium	7 = Saw Timber Poor
D = Treed Bog	LM = Lowland Mixed	Q = Mixed Swamp Conifer	W = White Pine	3 = Seedling Sapling Well	8 = Saw Timber Medium
E = Swamp Hdwoods	M = Mpl, Bch, Brch	R = Red Pine	X = Non Stocked	4 = Pole Timber Poor	9 = Saw Timber Well
F = Spruce Fir	MC = Mixed Conifer	S = Black Spruce	Z = Water		
G = Grass	MD = Mixed Deciduous	T = Tamarack			

PU	Acres
1	30.3
2	30.2

Watson Shortcut MWR

Compartments 70, 71
60.5 Acres

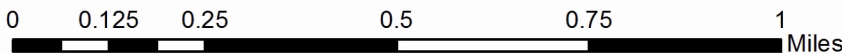
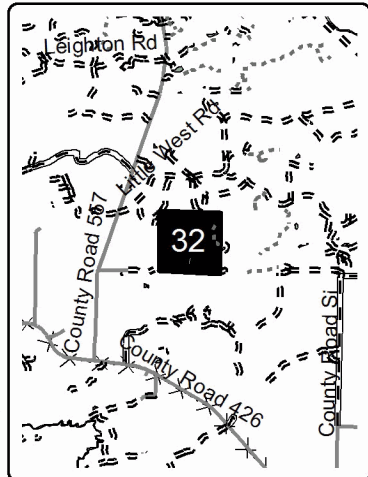


Legend

- Against State (Red)
- Section Corners
- Highway
- Paved Roads
- Gravel Roads
- Poor Dirt Roads
- Closed Roads



Locator Map
1:200,000





TIMBER SALE MAP

This information provided by authority of Part 525, 1994 PA 451, as amended.

Sale Number	Year
32-007-17	2017

Forest Management Unit Gwinn	County Marquette	Mapped By McDonald	Date 03/16/2017	Page 2	of 2
Township 43N	Range 25W	Section(s) and Subdivision(s) Section 32, 34	Scale 1:15,840		

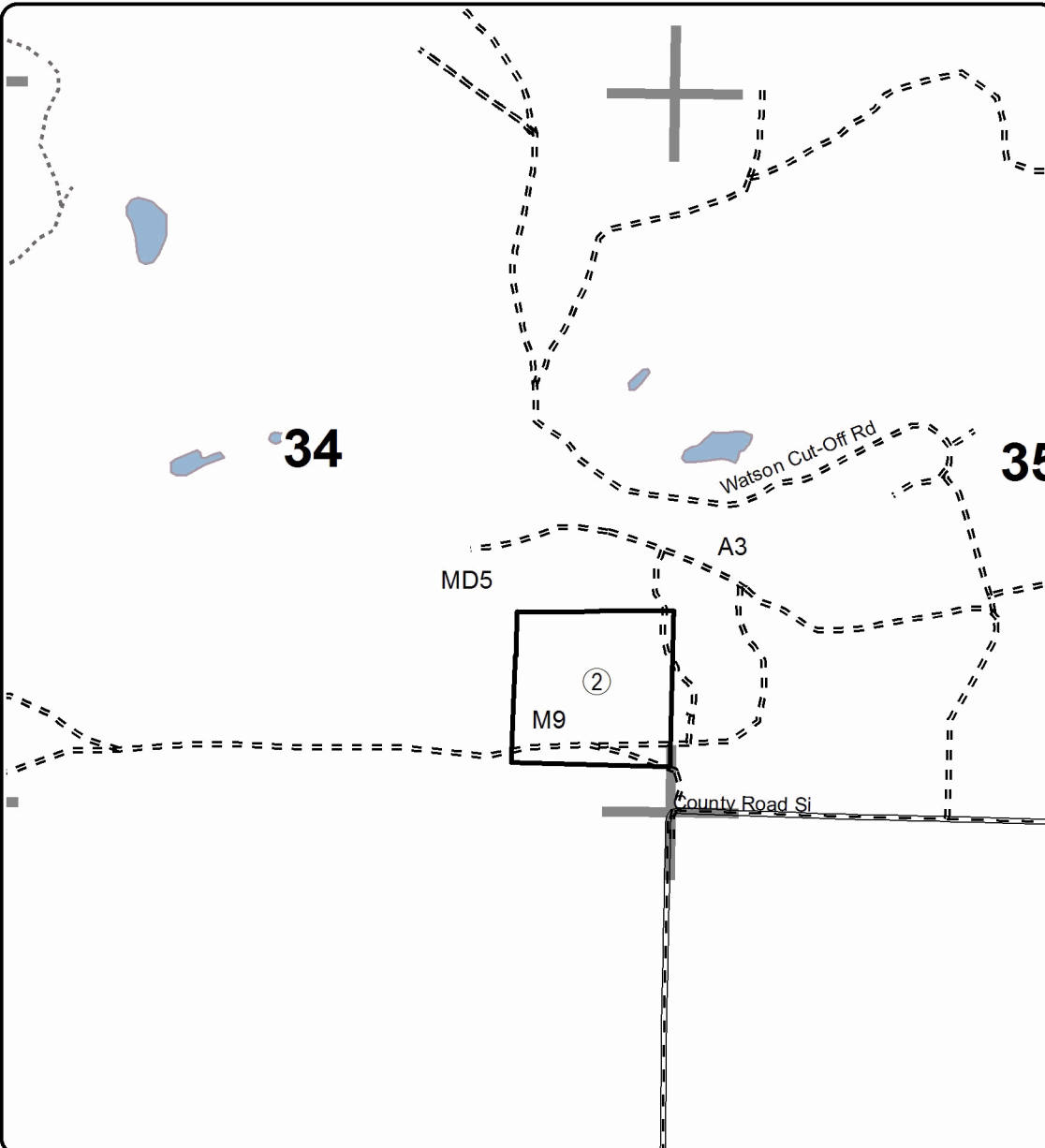
Cover Type				Density	
A = Aspen	H = Hemlock	N = Marsh	U = Upland Brush	0 = Non Stocked	5 = Pole Timber Medium
B = Paper Birch	J = Jack Pine	O = Oak	UM = Upland Mixed	1 = Seedling Sapling Poor	6 = Pole Timber Well
C = Cedar	L = Lowland Brush	P = Lowland Poplar	V = Bog or Marsh	2 = Seedling Sapling Medium	7 = Saw Timber Poor
D = Tread Bog	LM = Lowland Mixed	Q = Mixed Swamp Conifer	W = White Pine	3 = Seedling Sapling Well	8 = Saw Timber Medium
E = Swamp Hdwoods	M = Mpl, Bch, Brch	R = Red Pine	X = Non Stocked	4 = Pole Timber Poor	9 = Saw Timber Well
F = Spruce Fir	MC = Mixed Conifer	S = Black Spruce	Z = Water		
G = Grass	MD = Mixed Deciduous	T = Tamarack			

PU	Acres
1	30.3
2	30.2

Watson Shortcut MWR

Compartments 70, 71

60.5 Acres

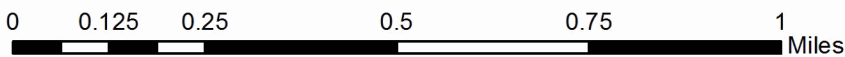
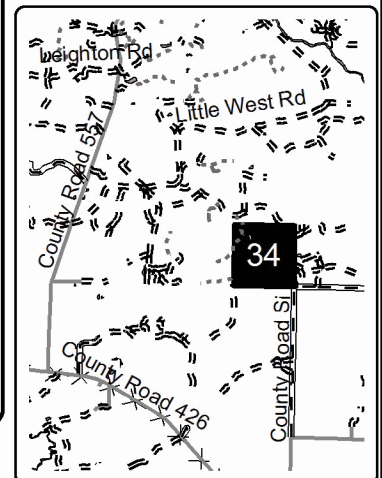


Legend

- Against State (Red)
- Section Corners
- Highway
- Paved Roads
- Gravel Roads
- Poor Dirt Roads
- Closed Roads
- Lakes and Rivers



Locator Map
1:200,000



TIMBER SALE INFORMATION

Ladoga/Paulson MWR (32-008-17)

Alger County (Advertised Price \$11,166.70)

SALE NOTE: This sale is part of a large research project and as a result has specific harvesting requirements. Onsite review prior to bidding is highly recommended. No extensions will be allowed on this sale. However, with stipulations (see spec 7.2.7), a free 1 year extension can be applied to another State Forest Timber Sale Contract.

Access may be through private or other public land.

A timber sale contract for this lump sum, sealed bid timber sale will be awarded to the responsible bidder offering the highest sealed bid price. Bids must be at or above the following advertised price for each species:

<u>PRODUCTS & SPECIES</u>	<u>ESTIMATED UNITS*</u>	<u>ADVERTISED PRICE</u>
Sawtimber		
Red Maple	0.80 MBF	\$ 100.00 / MBF
Sugar Maple	19.10 MBF	\$ 359.00 / MBF
Pulpwood		
Basswood	3.00 Cords	\$ 10.00 / Cord
Black Cherry	21.00 Cords	\$ 16.60 / Cord
Red Maple	18.00 Cords	\$ 16.60 / Cord
Sugar Maple	214.00 Cords	\$ 16.60 / Cord

* The estimated units are final and not subject to adjustment. Prospective bidders are urged to examine this timber and to make their own estimates of quantity and quality.

BOND AND PAYMENT SCHEDULE:

1. A bond in the amount of \$558.00 to insure faithful performance of the conditions of the contract will be deposited by the successful bidder within 21 days of the sale award.
2. Cutting in any sale or unit without the required advance payment would be considered a trespass.
3. Total payment must be paid in advance or according to the following schedule:
 - (a) Ten percent (10%) of the sale value must be paid within 21 days of the sale award.
 - (b) The 10% down payment will be credited towards the first unit cut.
4. If no cutting takes place, the 10% down payment will not be refunded.
5. Operations on the contract issued will terminate on 03/15/2018.

Description of Timber by Payment Unit (PU)

PU	MARKET GROUP	PRODUCT	QUANTITY	UNIT	ACRES	ADVERTISE PRICE
1	Sugar Maple	Sawtimber	13.2	MBF	29.4	\$7,076.20
	Basswood	Pulpwood	3.0	Cords		
	Red Maple		3.0	Cords		
	Sugar Maple		136.0	Cords		
2	Red Maple	Sawtimber	0.8	MBF	30.6	\$4,090.50
	Sugar Maple		5.9	MBF		
	Black Cherry	Pulpwood	21.0	Cords		
	Red Maple		15.0	Cords		
	Sugar Maple		78.0	Cords		
TOTAL:			19.9	MBF		
TOTAL:			256.0	Cords		

Sale Specific Conditions & Requirements

Sale Name: Ladoga/Paulson MWR

Sale Number: 32-008-17 Seq#: 1

1 - Sale Area

1.2 - Boundaries

1.2.1 - Painted boundaries (1/14)

The sale boundary is marked and identified by red and yellow paint. Exterior sale boundary lines against state are marked with red paint. Interior canopy gaps are marked with yellow paint, designating patch cuts. The perimeter trees of the gaps are painted with yellow "V's" and are not to be cut. The painted boundary line trees are not Included Timber and are to be protected unless marked with orange paint.

2 - Timber Specifications

2.1 - Included Timber

2.1.3 - Cut tree marked unit(s) (12/08)

Within Payment Unit(s) 1 and 2, all trees are designated for cutting when marked with orange paint above and below stump height, regardless of merchantability. In addition, cut all trees that are two (2) inches or more at DBH within the designated patch-cut/gap areas (bounded by yellow painted "V's"). Yellow painted boundary trees are not to be harvested. Exception: do not cut any white pine.

2.2 - Utilization

2.2.2 - Chipping required (5/14)

Payment Units 1 and 2 must be chip harvested to facilitate follow-up scarification. If market conditions limit the practicality of chipping, and with Unit Manager approval, the producer may skid all remaining topwood out of these patch cut areas and scatter in locations approved by the sale administrator. Products may be produced as roundwood and forwarded to decking areas in final product length, but the tops must be left intact and skidded to the landing for chipping. Chipping or slash removal must be completed by March 15th 2018. If the deadline is not met, damages will be collected at a rate determined by the cost for the department to hire a contractor to complete this specification. The requirement to retain approximately 1/6 to 1/3 of tree tops and limbs less than four inches in diameter does not apply (G. C. & R. 2.2). This is due to the research nature of these units.

2.2.3 - Stump heights (4/07)

Stump heights within Payment Units 1 and 2 shall not exceed 12 inches for trees greater than 10 inches DBH and 4 inches for trees smaller than 10 inches DBH.

2.2.8 - Utilization and removal (5/14)

Payment Units 1 and 2 are part of a research project. All slash and all forest products meeting standards set forth in General Condition and Requirement 2.2 - Utilization must be removed from the patch cut areas. The slash must be chipped unless another option is negotiated with the Unit Manager or their representative to reduce, eliminate, and/or disperse the slash into the surrounding area. Chipping or slash removal must be completed by March 15th 2018. This is because of the research nature of this project.

3 - Payments

3.4 - Damaged Timber

3.4.1 - Damaged timber (6/14)

General Condition and Requirement 3.4 Damaged Timber, defines liquidated damages for undesignated live merchantable trees which are cut or injured. No damage is acceptable to residual merchantable trees. Within the sale area, if more than 5% of trees (> 4.5" DBH) within a specified area of the sale are damaged, liquidated damages will be assessed for all trees damaged. Rates will be in accordance with General Condition and Requirement 3.4 Damaged Timber, or at a rate of \$50 per sawtimber tree and \$5 per pole sized tree, whichever is greater.

4 - Transportation

4.1 - Construction

4.1.5 - Culverts (5/14)

The access road will require the installation of a culvert as shown on the Timber Sale Map for cross drainage and must be installed prior to hauling. The culvert shall be new, corrugated metal. The culvert will be a minimum of 12 inches in diameter and 24 feet in length and shall be removed after the sale is completed. A DEQ permit is required and must be obtained by the Purchaser.

4.1.6 - Road construction (1/09)

Construction of new roads or improvements of existing roads shall be done in such a way as to minimize the environmental and visual impacts. Merchantable trees shall be cut and utilized unless otherwise directed. Non-merchantable trees shall be severed and laid flat on the ground. Slash shall be scattered, and not left in windrows and kept a minimum of 10 feet back from the road edge. Stumps shall be set upright, not left on edge, and be moved at least 10 feet away from the road edge. Disturbed soil shall be feathered into the woods and not left in berms or windrows.

4.1.7 - Road closure (10/11)

All new roads built into the sale must be blocked to vehicle traffic upon completion of the sale. In general, this will require obliterating the road, rendering it impassible to ORV and vehicle traffic. Contact the sale administrator for specific details of design and placement.

4.4 - Access

4.4.1 - Private property access (3/11)

Permission for access across private land (Weyerhaeuser), is the responsibility of the Purchaser.

5 - Operations

5.1 - Notification

5.1.1 - Pre-sale conference (10/16)

A pre-sale conference on site between the Purchaser and sale administrator is required prior to beginning any operations to discuss the logging plan, landings and research requirements. The Unit Manager or his/her representative must be contacted at least 10 days in advance to schedule the conference.

5.2 - Conduct of Operations

5.2.2 - Hazard Trees/Snags

5.2.2.1 - Den trees (10/16)

Obvious hollow and/or den trees shall be protected and left standing unless they are a safety hazard.

5.2.3 - Operating Restrictions

5.2.3.1 - Operating restrictions (9/11)

Within Payment Unit(s) 1 and 2, payments must be completed and operations must begin by February 1st 2018. This restriction is due to the necessity of assuring that all operations are on schedule for timely completion of the research project.

5.2.3.2 - Operating restrictions (9/11)

Within Payment Unit(s) 1 and 2, and unless changed by written agreement, cutting and skidding is limited to the period from August 15th 2017 to March 15th 2018. This restriction is to meet the requirements of a silviculture research project.

5.2.32 - Decking/landing restoration (9/13)

All decking and landing areas must have the surface area restored to a condition equal to or better than before. This is to ensure the proper regeneration of the stand. Wood debris, chips and "cookies" from trimmings must be removed or scattered away from landing and loading areas and may not be windrowed on the edge.

5.2.38 - No decking against live trees (2/04)

Cut products may not be decked against unmarked or designated leave trees.

5.4 - Soil Protection

5.4.1 - Rutting restriction, general (7/16)

Operations are to cease immediately if equipment and weather conditions result in rutting of roads and/or skid trails which is

12 inches or greater in depth and 50 feet in length. The Unit Manager or his/her representative may restrict hauling and/or skidding if ruts exceed the specified depth. With the Unit Manager or his/her representative's approval, the Purchaser may return to the area when the risk of rutting has decreased.

5.8 - Protection of Endangered Species

5.8.5 - Protection of raptor nests (3/13)

All trees with raptor nests will be protected if found during harvesting operations. Notification will be made to the Unit Manager or his/her representative who will notify the Wildlife Biologist so an on-site evaluation and recommendation can be made, if necessary.

7 - Other Conditions

7.2 - Extensions

7.2.7 - Research extension (12/16)

This is a research sale with a short contract length. The sale must be harvested promptly. One (1), twelve (12) month extension can be applied to one (1) other State Forest Timber Sale Contract owned by the purchaser or owned by one (1) designated sub-contractor of the Purchaser that works this contract. To qualify, the contract expiration date of the contract to be extended must be within twelve (12) months from the issue date of this contract. If this is the first extension on the other State Forest Timber Sale Contract, then the 5% extension fee will be waived. If this is an additional extension, the 10% fee will be reduced to 5%. The salvage extension must be used before this contract is closed-out. This specification does not alleviate the purchaser from any contractual obligations of the extended State Forest Timber Sale Contract. Per General Condition & Requirement 7.2, extensions are at the sole discretion of the DNR.

7.3 - Contract Modifications

7.3.1 - Emerald Ash Borer

7.3.1.2 - Emerald ash borer, ash or firewood on sale (2/05)

There is ash and/or "firewood" in this sale and it is located within an emerald ash borer quarantined area. The Director of the Michigan Department of Agriculture (MDA) by the authority of Act No. 72 of the Public Acts of 1945, as amended, and Quarantine Regulation No. 620, has promulgated this quarantine to prevent the further spread of this pest and sets forth: definitions, regulated articles, regulated areas, conditions of movement, violations and penalties, and special exemptions. The Purchaser must comply with this quarantine. Contact the MDA for further information.



TIMBER SALE MAP

This information provided by authority of Part 525, 1994 PA 451, as amended.

Sale Number	Year
32-008-17	2017

Forest Management Unit Gwinn	County Alger	Mapped By McDonald	Date 03/16/2017	Page 1	of 2
Township 45N	Range 22W	Section(s) and Subdivision(s) Section 11	Scale 1:15,840		

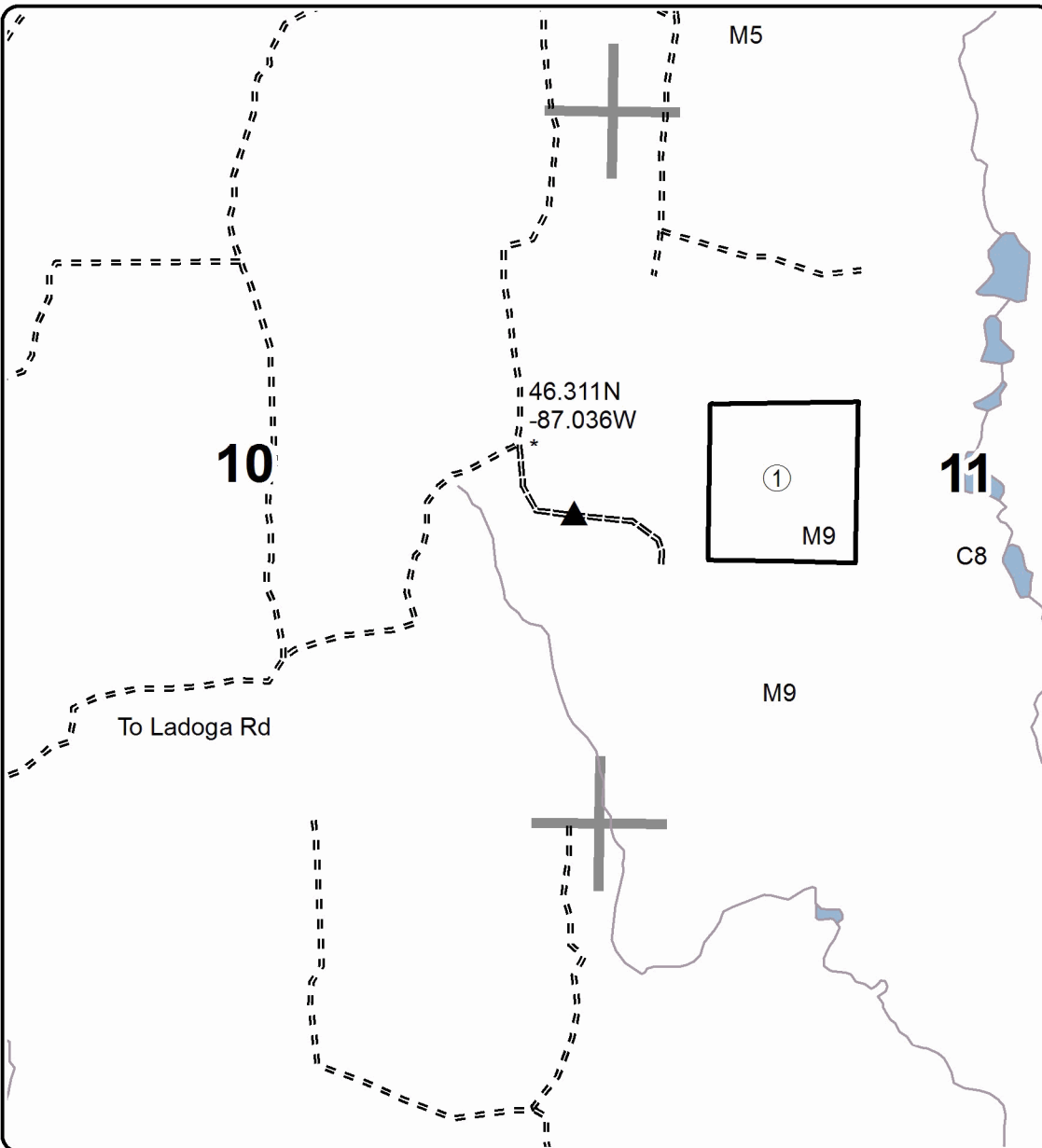
Cover Type				Density	
A = Aspen	H = Hemlock	N = Marsh	U = Upland Brush	0 = Non Stocked	5 = Pole Timber Medium
B = Paper Birch	J = Jack Pine	O = Oak	UM = Upland Mixed	1 = Seedling Sapling Poor	6 = Pole Timber Well
C = Cedar	L = Lowland Brush	P = Lowland Poplar	V = Bog or Marsh	2 = Seedling Sapling Medium	7 = Saw Timber Poor
D = Treed Bog	LM = Lowland Mixed	Q = Mixed Swamp Conifer	W = White Pine	3 = Seedling Sapling Well	8 = Saw Timber Medium
E = Swamp Hdwoods	M = Mpl, Bch, Brch	R = Red Pine	X = Non Stocked	4 = Pole Timber Poor	9 = Saw Timber Well
F = Spruce Fir	MC = Mixed Conifer	S = Black Spruce	Z = Water		
G = Grass	MD = Mixed Deciduous	T = Tamarack			

PU	Acres
1	29.4
2	30.6

Ladoga/Paulson MWR

Compartments 95, 100

60 Acres

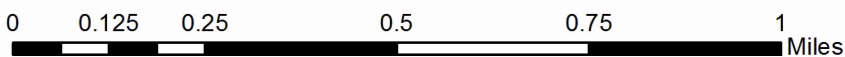
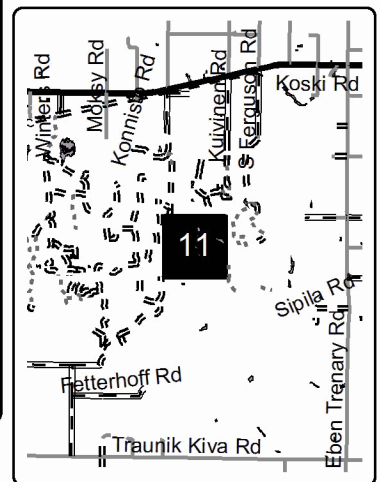


Legend

- Against State (Red)
- Section Corners
- Highway
- Paved Roads
- Gravel Roads
- Poor Dirt Roads
- Closed Roads
- Lakes and Rivers
- Culvert needed



Locator Map
1:200,000





TIMBER SALE MAP

This information provided by authority of Part 525, 1994 PA 451, as amended.

Forest Management Unit Gwinn		County Alger	Mapped By McDonald	Date 03/16/2017	Page 2	of 2
Township 45N	Range 21W	Section(s) and Subdivision(s) Section 11		Cruised By LaBumbard		
				Scale 1:15,840		

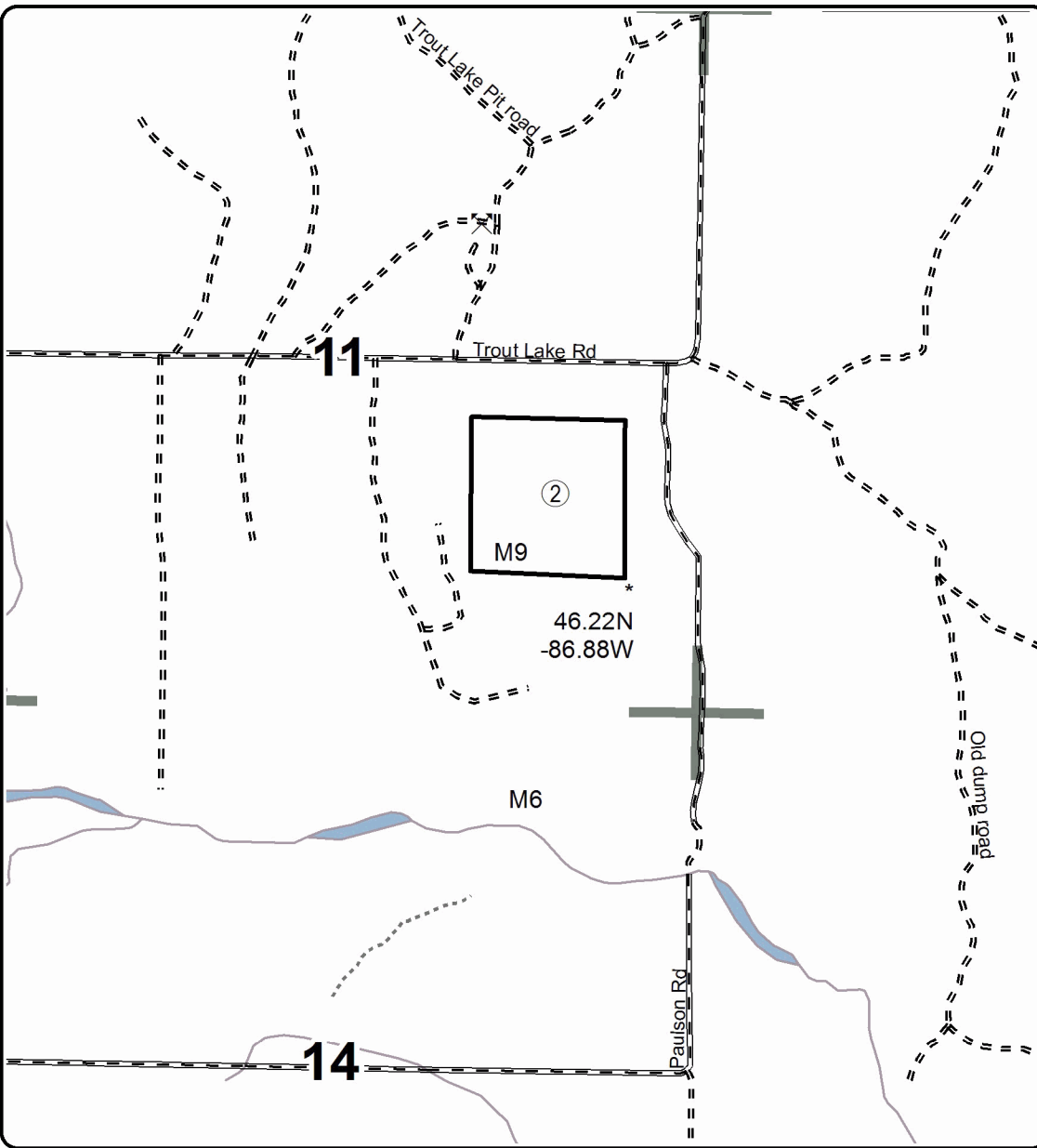
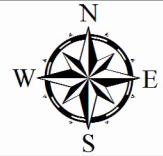
Cover Type				Density			
A = Aspen	H = Hemlock	N = Marsh	U = Upland Brush	0 = Non Stocked	5 = Pole Timber Medium		
B = Paper Birch	J = Jack Pine	O = Oak	UM = Upland Mixed	1 = Seedling Sapling Poor	6 = Pole Timber Well		
C = Cedar	L = Lowland Brush	P = Lowland Poplar	V = Bog or Marsh	2 = Seedling Sapling Medium	7 = Saw Timber Poor		
D = Treed Bog	LM = Lowland Mixed	Q = Mixed Swamp Conifer	W = White Pine	3 = Seedling Sapling Well	8 = Saw Timber Medium		
E = Swamp Hdwoods	M = Mpl, Bch, Brch	R = Red Pine	X = Non Stocked	4 = Pole Timber Poor	9 = Saw Timber Well		
F = Spruce Fir	MC = Mixed Conifer	S = Black Spruce	Z = Water				
G = Grass	MD = Mixed Deciduous	T = Tamarack					

PU	Acres
1	29.4
2	30.6

Ladoga/Paulson MWR

Compartments 95, 100

60 Acres

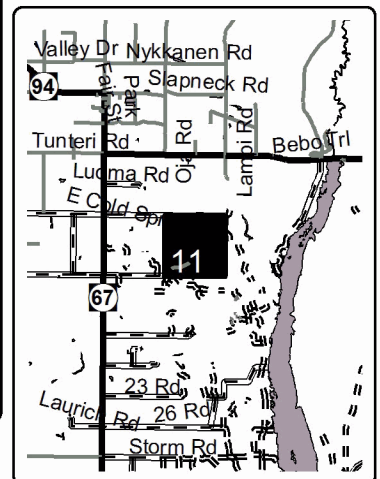


Legend

- Against State (Red)
- Section Corners
- Highway
- Paved Roads
- Gravel Roads
- Poor Dirt Roads
- Closed Roads
- Lakes and Rivers
- All



Locator Map
1:200,000



TIMBER SALE INFORMATION

West Gem MWR (32-010-17)

Marquette County (Advertised Price \$24,889.80)

SALE NOTE: This sale is part of a large research project and as a result has specific harvesting requirements. Onsite review prior to bidding is highly recommended. No extensions will be allowed on this sale. However, with stipulations (see spec 7.2.7), a free 1 year extension can be applied to another State Forest Timber Sale Contract.

A timber sale contract for this lump sum, sealed bid timber sale will be awarded to the responsible bidder offering the highest sealed bid price. Bids must be at or above the following advertised price for each species:

<u>PRODUCTS & SPECIES</u>	<u>ESTIMATED UNITS*</u>	<u>ADVERTISED PRICE</u>
Sawtimber		
Basswood	13.20 MBF	\$ 140.00 / MBF
Sugar Maple	51.90 MBF	\$ 359.00 / MBF
White Ash	1.10 MBF	\$ 44.00 / MBF
Pulpwood		
Balsam Poplar	2.00 Cords	\$ 22.05 / Cord
Basswood	30.00 Cords	\$ 10.00 / Cord
Sugar Maple	241.00 Cords	\$ 16.60 / Cord
White Ash	1.00 Cords	\$ 16.60 / Cord

* The estimated units are final and not subject to adjustment. Prospective bidders are urged to examine this timber and to make their own estimates of quantity and quality.

BOND AND PAYMENT SCHEDULE:

1. A bond in the amount of \$1,244.00 to insure faithful performance of the conditions of the contract will be deposited by the successful bidder within 21 days of the sale award.
2. Cutting in any sale or unit without the required advance payment would be considered a trespass.
3. Total payment must be paid in advance or according to the following schedule:
 - (a) Ten percent (10%) of the sale value must be paid within 21 days of the sale award.
 - (b) The 10% down payment will be credited towards the first unit cut.
4. If no cutting takes place, the 10% down payment will not be refunded.
5. Operations on the contract issued will terminate on 03/15/2018.

Description of Timber by Payment Unit (PU)

PU	MARKET GROUP	PRODUCT	QUANTITY	UNIT	ACRES	ADVERTISE PRICE
1	Basswood	Sawtimber	11.7	MBF	29.8	\$19,656.60
	Sugar Maple		42.8	MBF		
	Basswood	Pulpwood	18.0	Cords		
	Sugar Maple		149.0	Cords		
2	Basswood	Sawtimber	1.5	MBF	29.4	\$5,233.20
	Sugar Maple		9.1	MBF		
	White Ash		1.1	MBF		
	Balsam Poplar	Pulpwood	2.0	Cords		
	Basswood		12.0	Cords		
	Sugar Maple		92.0	Cords		
	White Ash		1.0	Cords		
TOTAL:			66.2	MBF		
TOTAL:			274.0	Cords		

Sale Specific Conditions & Requirements

Sale Name: West Gem MWR

Sale Number: 32-010-17 Seq#: 1

1 - Sale Area

1.2 - Boundaries

1.2.1 - Painted boundaries (1/14)

The sale boundary is marked and identified by red and yellow paint. Exterior sale boundary lines are marked with red paint. Interior sale boundaries are marked with yellow paint in a "V" pattern, designating patch cuts. The painted boundary trees are not Included Timber and are to be protected.

2 - Timber Specifications

2.1 - Included Timber

2.1.1 - Clearcut unit(s) with unmerchantable trees (6/14)

Within Payment Unit(s) 1, cut all trees that are two (2) inches or more at DBH within designated patch-cut areas (bounded by yellow paint). Yellow painted boundary trees are not to be harvested. The total area of the patch cuts is 12.5 acres with patches ranging from 1/3 acre to 1 acre. 20 patch cut areas are located within the 30 acre treatment area bounded by red paint. No trees will be harvested outside of the designated patch cut areas unless marked with orange paint. These trees were marked to create skid trails between the patch cuts.

2.1.3 - Cut tree marked unit(s) (12/08)

Within Payment Unit(s) 2, all trees are designated for cutting when marked with orange paint above and below stump height, regardless of merchantability. In addition, cut all trees that are two (2) inches or more at DBH within the designated patch-cut/gap areas (bounded by yellow painted "V's"). Yellow painted boundary trees are not to be harvested. Exception: do not cut any white pine.

2.2 - Utilization

2.2.4 - Skidding length (2/14)

Skidding of lengths over 26 feet is not permissible in Payment Units 1 and 2 unless approved by the Unit Manager or his/her representative.

2.2.7 - Uncut designated trees (2/04)

Liquidated damages of \$10.00 per tree will be assessed for every marked tree not cut.

2.2.8 - Utilization and removal (5/14)

Within Payment Units 1 and 2, all slash less than nine inches (<9") top diameter outside bark at the small end may not be removed from the sale area, e.g. tops. These tops are to be left intact where they fall with branches remaining upright. This is because of the research nature of this project.

3 - Payments

3.4 - Damaged Timber

3.4.1 - Damaged timber (6/14)

General Condition and Requirement 3.4 Damaged Timber, defines liquidated damages for undesignated live merchantable trees which are cut or injured. No damage is acceptable to residual merchantable trees. Within the sale area, if more than 5% of trees (> 4.5" DBH) within a specified area of the sale are damaged, liquidated damages will be assessed for all trees damaged. Rates will be in accordance with General Condition and Requirement 3.4 Damaged Timber, or at a rate of \$50 per sawtimber tree and \$5 per pole sized tree, whichever is greater.

4 - Transportation

4.1 - Construction

4.1.5 - Culverts (5/14)

Roads will require the installation of culverts for cross drainage or at natural drainage-ways with their placement specified by the sale administrator. It is recommended they be installed prior to hauling. The culverts shall be new, corrugated metal or

plastic gauge. Culverts will be a minimum of 12 inches in diameter and 24 feet in length.

4.1.11 - Permits (2/12)

The Purchaser will secure any necessary stream crossing permits that may be required.

4.1.12 - No new roads (1/12)

No new roads will be permitted in any Payment Unit. All operations are limited to existing roads. Skid trails only will be allowed.

5 - Operations

5.2 - Conduct of Operations

5.2.2 - Hazard Trees/Snags

5.2.2.1 - Den trees (10/16)

Obvious hollow and/or den trees shall be protected and left standing unless they are a safety hazard.

5.2.3 - Operating Restrictions

5.2.3.1 - Operating restrictions (9/11)

Within Payment Unit(s) 1 and 2, payments must be completed and operations must begin by February 1st 2018. This restriction is due to the necessity of assuring that all operations are on schedule for timely completion of the research project.

5.2.3.2 - Operating restrictions (9/11)

Within Payment Unit(s) 1 and 2, unless changed by written agreement, cutting and skidding is limited to the period from December 1st 2017 to March 15th 2018. This restriction is due to the necessity of assuring that all operations are on schedule for timely completion of the research project.

5.2.32 - Decking/landing restoration (9/13)

All decking and landing areas must have the surface area restored to a condition equal to or better than before. This is to ensure the proper regeneration of the stand. Wood debris, chips and "cookies" from trimmings must be removed or scattered away from landing and loading areas and may not be windrowed on the edge.

5.2.38 - No decking against live trees (2/04)

Cut products may not be decked against unmarked or designated leave trees.

5.4 - Soil Protection

5.4.1 - Rutting restriction, general (7/16)

Operations are to cease immediately if equipment and weather conditions result in rutting of roads and/or skid trails which is 12 inches or greater in depth and 50 feet in length. The Unit Manager or his/her representative may restrict hauling and/or skidding if ruts exceed the specified depth. With the Unit Manager or his/her representative's approval, the Purchaser may return to the area when the risk of rutting has decreased.

5.8 - Protection of Endangered Species

5.8.5 - Protection of raptor nests (3/13)

All trees with raptor nests will be protected if found during harvesting operations. Notification will be made to the Unit Manager or his/her representative who will notify the Wildlife Biologist so an on-site evaluation and recommendation can be made, if necessary.

6 - Safety and Fire Prevention

6.2 - Signing

6.2.2 - Snowmobile trail posting (8/09)

The Purchaser is responsible for posting and maintaining caution signs on Perrin Brothers Road, which is a State designated snowmobile trail, prior to beginning operations during the snowmobile season (approximately December 1 to March 31). The trail must be posted at appropriate distances from the sale area to warn of logging activity and truck traffic. Signs must be removed when harvest operations are suspended or completed. The Purchaser will provide these signs.

6.2.3 - Recreational trail posting (2/10)

The Purchaser is responsible for posting and maintaining caution signs on the access road to Payment Unit 2 prior to beginning operations. The trail must be posted at appropriate distances from the sale area to warn of logging activity and truck traffic at both ends of the trail. Signs must be removed when harvest operations are suspended or completed. The Purchaser will provide these signs.

7 - Other Conditions

7.2 - Extensions

7.2.7 - Research extension (12/16)

This is a research sale with a short contract length. The sale must be harvested promptly. One (1), twelve (12) month extension can be applied to one (1) other State Forest Timber Sale Contract owned by the purchaser or owned by one (1) designated sub-contractor of the Purchaser that works this contract. To qualify, the contract expiration date of the contract to be extended must be within twelve (12) months from the issue date of this contract. If this is the first extension on the other State Forest Timber Sale Contract, then the 5% extension fee will be waived. If this is an additional extension, the 10% fee will be reduced to 5%. The salvage extension must be used before this contract is closed-out. This specification does not alleviate the purchaser from any contractual obligations of the extended State Forest Timber Sale Contract. Per General Condition & Requirement 7.2, extensions are at the sole discretion of the DNR.

7.3 - Contract Modifications

7.3.1 - Emerald Ash Borer

7.3.1.2 - Emerald ash borer, ash or firewood on sale (2/05)

There is ash and/or "firewood" in this sale and it is located within an emerald ash borer quarantined area. The Director of the Michigan Department of Agriculture (MDA) by the authority of Act No. 72 of the Public Acts of 1945, as amended, and Quarantine Regulation No. 620, has promulgated this quarantine to prevent the further spread of this pest and sets forth: definitions, regulated articles, regulated areas, conditions of movement, violations and penalties, and special exemptions. The Purchaser must comply with this quarantine. Contact the MDA for further information.



TIMBER SALE MAP

This information provided by authority of Part 525, 1994 PA 451, as amended.

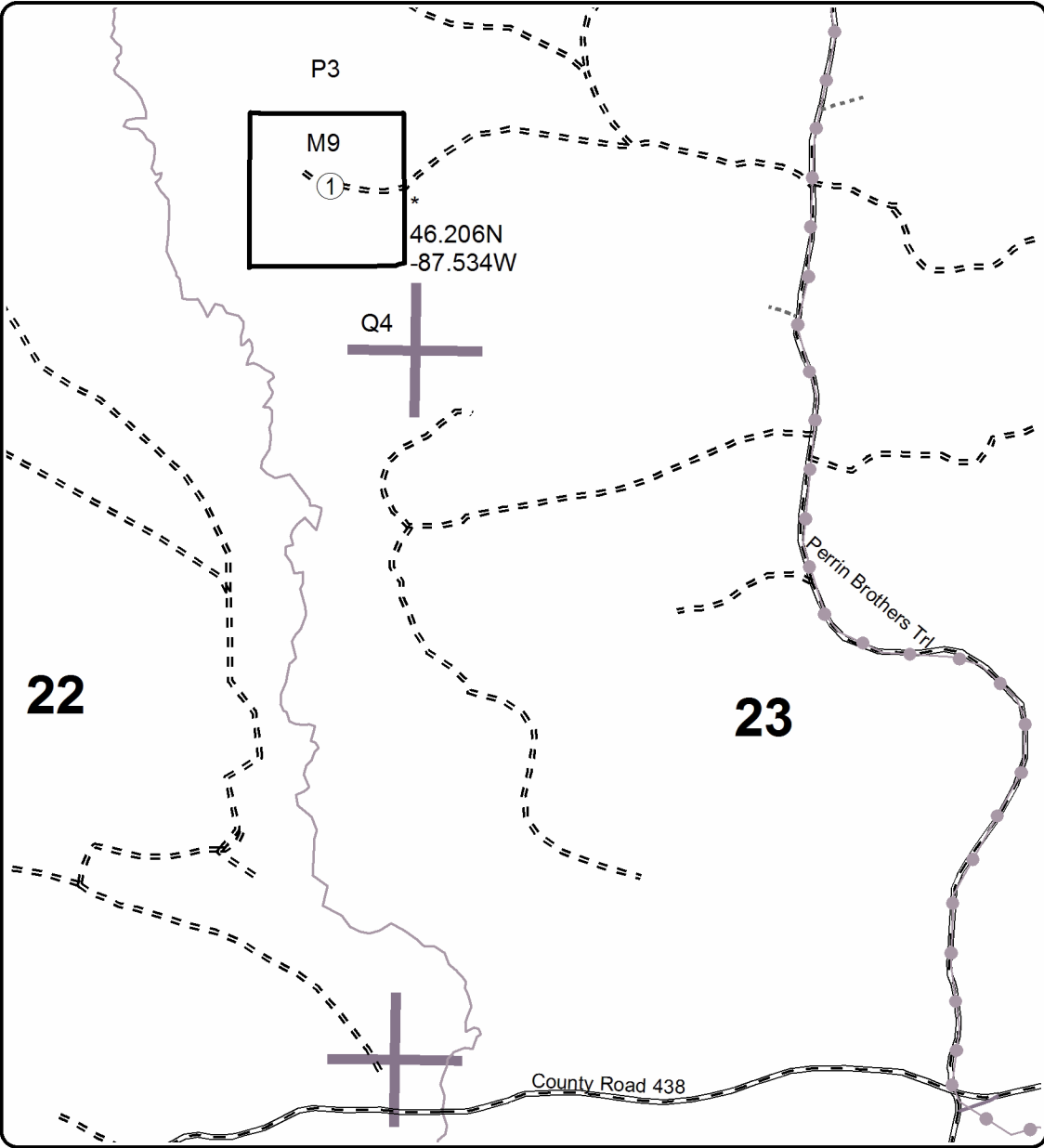
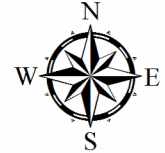
Sale Number	Year
32-010	2017

Forest Management Unit Gwinn	County Marquette	Mapped By McDonald	Date 03/22/2017	Page 1	of 2
Township 44N	Range 26W	Section(s) and Subdivision(s) Sections 15, 20, 21	Cruised By LaBumbard	Scale 1:15,840	

Cover Type				Density	
A = Aspen	H = Hemlock	N = Marsh	U = Upland Brush	0 = Non Stocked	5 = Pole Timber Medium
B = Paper Birch	J = Jack Pine	O = Oak	UM = Upland Mixed	1 = Seedling Sapling Poor	6 = Pole Timber Well
C = Cedar	L = Lowland Brush	P = Lowland Poplar	V = Bog or Marsh	2 = Seedling Sapling Medium	7 = Saw Timber Poor
D = Treed Bog	LM = Lowland Mixed	Q = Mixed Swamp Conifer	W = White Pine	3 = Seedling Sapling Well	8 = Saw Timber Medium
E = Swamp Hdwoods	M = Mpl, Bch, Brch	R = Red Pine	X = Non Stocked	4 = Pole Timber Poor	9 = Saw Timber Well
F = Spruce Fir	MC = Mixed Conifer	S = Black Spruce	Z = Water		
G = Grass	MD = Mixed Deciduous	T = Tamarack			

PU	Acres
1	29.8
2	29.4

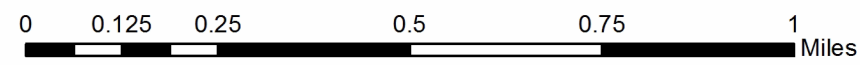
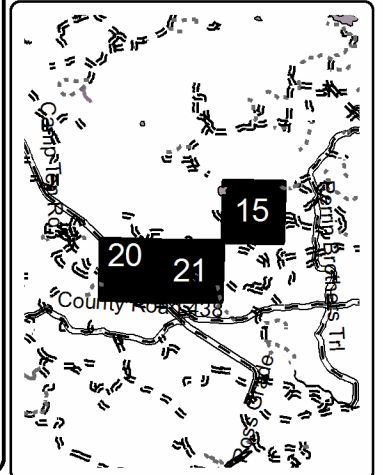
West GEM MWR Compartment 51 59.2 Acres



Legend

- Against State (Red)
- Section Corners
- Culvert Needed
- Highway
- Paved Roads
- Gravel Roads
- Poor Dirt Roads
- Closed Roads
- Streams
- Recreational Trail

Locator Map
1:200,000





TIMBER SALE MAP

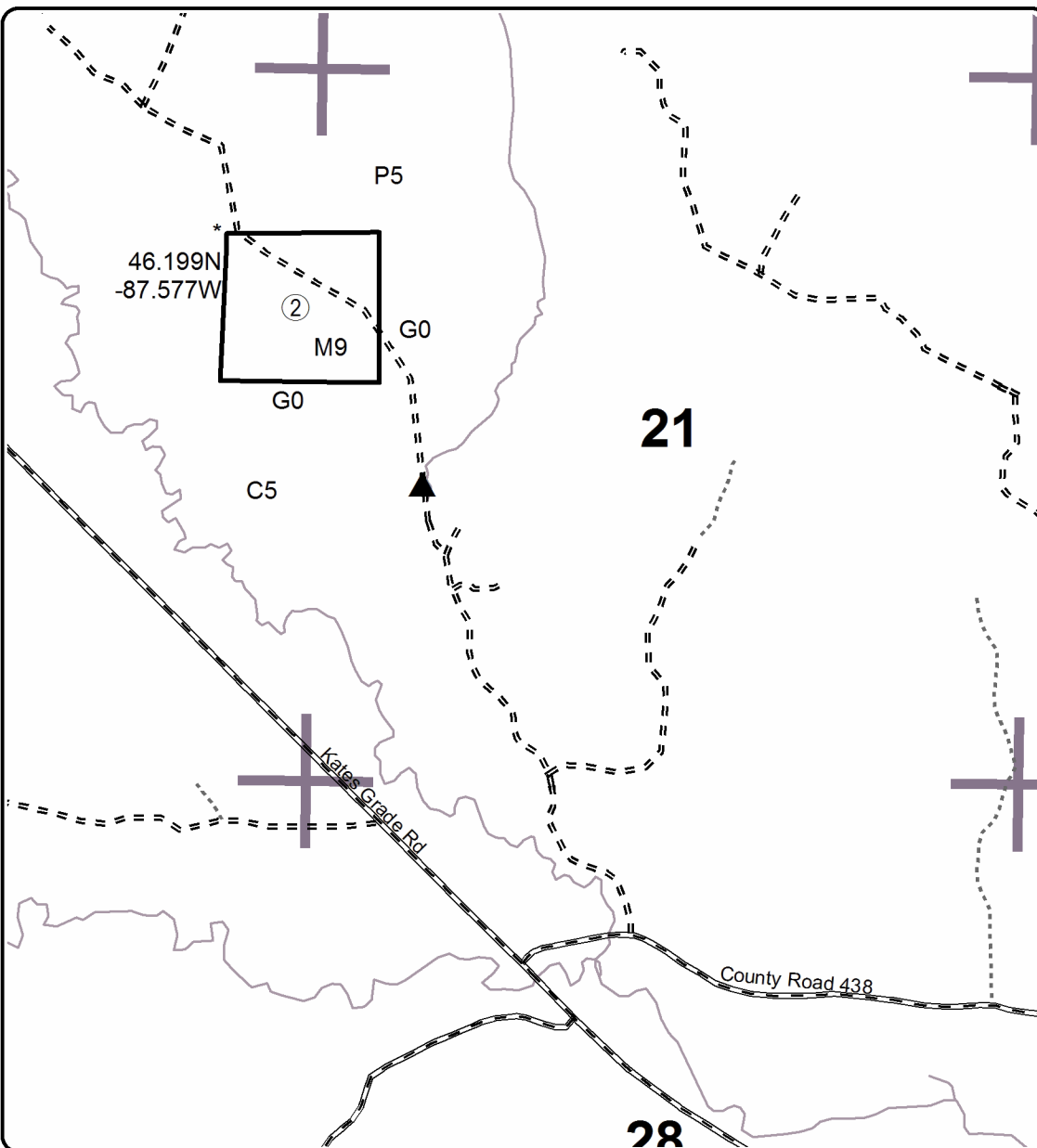
This information provided by authority of Part 525, 1994 PA 451, as amended.

Forest Management Unit Gwinn		County Marquette	Mapped By McDonald	Date 03/22/2017	Page 2	of 2
Township 44N	Range 26W	Section(s) and Subdivision(s) Sections 15, 20, 21		Scale 1:15,840		
Cruised By LaBumbard						

Cover Type				Density			
A = Aspen	H = Hemlock	N = Marsh	U = Upland Brush	0 = Non Stocked	5 = Pole Timber Medium		
B = Paper Birch	J = Jack Pine	O = Oak	UM = Upland Mixed	1 = Seedling Sapling Poor	6 = Pole Timber Well		
C = Cedar	L = Lowland Brush	P = Lowland Poplar	V = Bog or Marsh	2 = Seedling Sapling Medium	7 = Saw Timber Poor		
D = Treed Bog	LM = Lowland Mixed	Q = Mixed Swamp Conifer	W = White Pine	3 = Seedling Sapling Well	8 = Saw Timber Medium		
E = Swamp Hdwoods	M = Mpl, Bch, Brch	R = Red Pine	X = Non Stocked	4 = Pole Timber Poor	9 = Saw Timber Well		
F = Spruce Fir	MC = Mixed Conifer	S = Black Spruce	Z = Water				
G = Grass	MD = Mixed Deciduous	T = Tamarack					

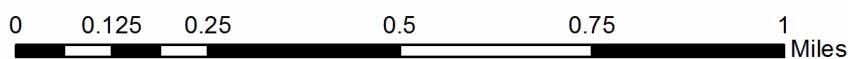
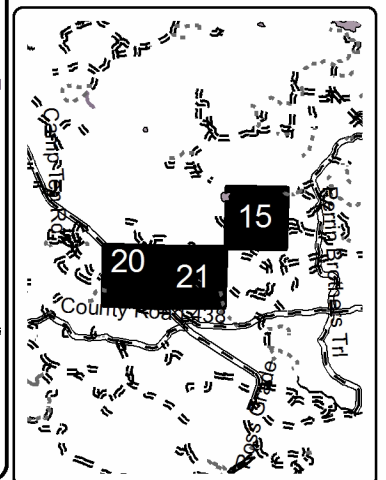
PU	Acres
1	29.8
2	29.4

West GEM MWR Compartment 51 59.2 Acres



Legend	
	Against State (Red)
	Section Corners
	Culvert Needed
	Highway
	Paved Roads
	Gravel Roads
	Poor Dirt Roads
	Closed Roads
	Streams
	Recreational Trail

Locator Map
1:200,000



TIMBER SALE INFORMATION

Engman Lake MWR (32-011-17)

Marquette County (Advertised Price \$18,958.50)

SALE NOTE: This sale is part of a large research project and as a result has specific harvesting requirements. Onsite review prior to bidding is highly recommended. No extensions will be allowed on this sale. However, with stipulations (see spec 7.2.7), a free 1 year extension can be applied to another State Forest Timber Sale Contract.

Access may be through private or other public land.

A timber sale contract for this lump sum, sealed bid timber sale will be awarded to the responsible bidder offering the highest sealed bid price. Bids must be at or above the following advertised price for each species:

<u>PRODUCTS & SPECIES</u>	<u>ESTIMATED UNITS*</u>	<u>ADVERTISED PRICE</u>
Sawtimber		
Basswood	2.00 MBF	\$ 140.00 / MBF
Black Cherry	7.60 MBF	\$ 111.00 / MBF
Red Maple	1.00 MBF	\$ 100.00 / MBF
Red Oak	4.30 MBF	\$ 164.00 / MBF
Sugar Maple	38.30 MBF	\$ 359.00 / MBF
Yellow Birch	0.80 MBF	\$ 66.00 / MBF
Pulpwood		
Basswood	8.00 Cords	\$ 10.00 / Cord
Black Cherry	29.00 Cords	\$ 16.60 / Cord
Red Maple	12.00 Cords	\$ 16.60 / Cord
Red Oak	6.00 Cords	\$ 12.70 / Cord
Sugar Maple	137.00 Cords	\$ 16.60 / Cord
Yellow Birch	7.00 Cords	\$ 16.60 / Cord

* The estimated units are final and not subject to adjustment. Prospective bidders are urged to examine this timber and to make their own estimates of quantity and quality.

BOND AND PAYMENT SCHEDULE:

1. A bond in the amount of \$948.00 to insure faithful performance of the conditions of the contract will be deposited by the successful bidder within 21 days of the sale award.
2. Cutting in any sale or unit without the required advance payment would be considered a trespass.
3. Total payment must be paid in advance or according to the following schedule:
 - (a) Ten percent (10%) of the sale value must be paid within 21 days of the sale award.
 - (b) The remainder is due before cutting begins.
4. If no cutting takes place, the 10% down payment will not be refunded.
5. Operations on the contract issued will terminate on 03/15/2018.

Description of Timber by Payment Unit (PU)

PU	MARKET GROUP	PRODUCT	QUANTITY	UNIT	ACRES	ADVERTISE PRICE			
1	Basswood	Sawtimber	2.0	MBF	30.0	\$18,958.50			
	Black Cherry		7.6	MBF					
	Red Maple		1.0	MBF					
	Red Oak		4.3	MBF					
	Sugar Maple		38.3	MBF					
	Yellow Birch		0.8	MBF					
	Basswood		Pulpwood	8.0			Cords		
	Black Cherry	29.0		Cords					
	Red Maple	12.0		Cords					
	Red Oak	6.0		Cords					
	Sugar Maple	137.0		Cords					
	Yellow Birch	7.0		Cords					
	TOTAL:			54.0			MBF		
	TOTAL:			199.0			Cords		

Sale Specific Conditions & Requirements

Sale Name: Engman Lake MWR

Sale Number: 32-011-17 Seq#: 1

1 - Sale Area

1.2 - Boundaries

1.2.1 - Painted boundaries (1/14)

The sale boundary and interior patch cut boundaries are marked and identified by red and yellow paint. Sale boundary lines against state land are marked with red paint. Interior small patch boundaries are marked with yellow paint in a "V" pattern, designating patch cuts. The painted boundary trees are not Included Timber and are to be protected.

2 - Timber Specifications

2.1 - Included Timber

2.1.1 - Clearcut unit(s) with unmerchantable trees (6/14)

Within Payment Unit(s) 1, cut all trees that are two (2) inches or more at DBH within designated patch-cut areas (bounded by yellow paint). Yellow painted boundary trees are not to be harvested. The total area of the patch cuts is 12.5 acres with patches ranging from 1/3 acre to 1 acre. 20 patch cut areas are located within the 30 acre treatment area. No trees will be harvested outside of the designated patch cut areas.

2.2 - Utilization

2.2.2 - Chipping required (5/14)

Payment Unit 1 must be chip harvested to facilitate follow-up scarification. Products may be produced as roundwood and forwarded to decking areas in final product length, but the tops must be left intact and skidded to the landing for chipping. If market conditions limit the practicality of chipping, the producer may skid all remaining topwood out of these payment units and scatter in locations approved by the sale administrator. Chipping or slash removal must be completed by March 15 2018. If the deadline is not met damages will be collected at a rate determined by the cost for the department to hire a contractor to complete this specification.

2.2.3 - Stump heights (4/07)

Stump heights within Payment Unit 1 shall not exceed 12 inches for trees greater than 10 inches DBH and 4 inches for trees smaller than 10 inches DBH.

2.2.4 - Skidding length (2/14)

Skidding of unlimbed tops or lengths over 26 feet is not permissible unless approved by the Unit Manager or his/her representative.

2.2.7 - Uncut designated trees (2/04)

Liquidated damages of \$10.00 per tree will be assessed for every marked tree not cut.

2.2.8 - Utilization and removal (5/14)

Payment Unit 1 is part of a large research project. All products meeting standards set forth in General Condition and Requirement 2.2 - Utilization must be removed from the sale area. This slash must be chipped unless another option is negotiated with the unit manager or there representative to reduce, eliminate, and/or disperse the slash into the surrounding area. Chipping or slash removal must be completed by March 15th 2018. This is because of the research nature of this project.

3 - Payments

3.4 - Damaged Timber

3.4.1 - Damaged timber (6/14)

General Condition and Requirement 3.4 Damaged Timber, defines liquidated damages for undesignated live merchantable trees which are cut or injured. No damage is acceptable to residual merchantable trees. Within the sale area, if more than 5% of trees (> 4.5" DBH) within a specified area of the sale are damaged, liquidated damages will be assessed for all trees damaged. Rates will be in accordance with General Condition and Requirement 3.4 Damaged Timber, or at a rate of \$50 per sawtimber tree and \$5 per pole sized tree, whichever is greater.

4 - Transportation

4.1 - Construction

4.1.12 - No new roads (1/12)

No new roads will be permitted for the sale. All operations are limited to existing roads. Skid trails only will be allowed.

5 - Operations

5.1 - Notification

5.1.1 - Pre-sale conference (10/16)

A pre-sale conference on site between the Purchaser and sale administrator is required prior to beginning any operations to discuss the logging plan, landings and research requirements. The Unit Manager or his/her representative must be contacted at least 10 days in advance to schedule the conference.

5.2 - Conduct of Operations

5.2.1 - Slash

5.2.1.14 - Chipping of slash (10/08)

If tops are chipped, they must be skidded to the landing separately from the bole section of the tree. Skidding of tops must be done in such a way as to minimize damage to the residual trees. Chips shall not be stored on site.

5.2.2 - Hazard Trees/Snags

5.2.2.1 - Den trees (10/16)

Obvious hollow and/or den trees shall be protected and left standing unless they are a safety hazard.

5.2.3 - Operating Restrictions

5.2.3.1 - Operating restrictions (9/11)

Within Payment Unit(s) 1, payments must be completed and operations must begin by February 1st 2018. This restriction is due to the necessity of assuring that all operations are on schedule for timely completion of the research project.

5.2.3.2 - Operating restrictions (9/11)

Within Payment Unit(s) 1, unless changed by written agreement, cutting and skidding is limited to the period from August 15th 2017 to March 15th 2018. This restriction is due to the necessity of assuring that all operations are on schedule for timely completion of the research project.

5.2.32 - Decking/landing restoration (9/13)

All decking and landing areas must have the surface area restored to a condition equal to or better than before. This is to ensure the proper regeneration of the stand. Wood debris, chips and "cookies" from trimmings must be removed or scattered away from landing and loading areas and may not be windrowed on the edge.

5.2.38 - No decking against live trees (2/04)

Cut products may not be decked against unmarked or designated leave trees.

5.4 - Soil Protection

5.4.1 - Rutting restriction, general (7/16)

Operations are to cease immediately if equipment and weather conditions result in rutting of roads and/or skid trails which is 12 inches or greater in depth and 50 feet in length. The Unit Manager or his/her representative may restrict hauling and/or skidding if ruts exceed the specified depth. With the Unit Manager or his/her representative's approval, the Purchaser may return to the area when the risk of rutting has decreased.

5.8 - Protection of Endangered Species

5.8.5 - Protection of raptor nests (3/13)

All trees with raptor nests will be protected if found during harvesting operations. Notification will be made to the Unit Manager or his/her representative who will notify the Wildlife Biologist so an on-site evaluation and recommendation can be made, if necessary.

7 - Other Conditions

7.2 - Extensions

7.2.7 - Research extension (12/16)

This is a research sale with a short contract length. The sale must be harvested promptly. One (1), twelve (12) month extension can be applied to one (1) other State Forest Timber Sale Contract owned by the purchaser or owned by one (1) designated sub-contractor of the Purchaser that works this contract. To qualify, the contract expiration date of the contract to be extended must be within twelve (12) months from the issue date of this contract. If this is the first extension on the other State Forest Timber Sale Contract, then the 5% extension fee will be waived. If this is an additional extension, the 10% fee will be reduced to 5%. The salvage extension must be used before this contract is closed-out. This specification does not alleviate the purchaser from any contractual obligations of the extended State Forest Timber Sale Contract. Per General Condition & Requirement 7.2, extensions are at the sole discretion of the DNR.

7.3 - Contract Modifications

7.3.1 - Emerald Ash Borer

7.3.1.2 - Emerald ash borer, ash or firewood on sale (2/05)

There is ash and/or "firewood" in this sale and it is located within an emerald ash borer quarantined area. The Director of the Michigan Department of Agriculture (MDA) by the authority of Act No. 72 of the Public Acts of 1945, as amended, and Quarantine Regulation No. 620, has promulgated this quarantine to prevent the further spread of this pest and sets forth: definitions, regulated articles, regulated areas, conditions of movement, violations and penalties, and special exemptions. The Purchaser must comply with this quarantine. Contact the MDA for further information.



TIMBER SALE MAP

This information provided by authority of Part 525, 1994 PA 451, as amended.

Forest Management Unit Gwinn		County Marquette	Mapped By McDonald	Date 03/16/2017	Page 1	of 1
Township 46N	Range 24W	Section(s) and Subdivision(s) Section 32		Cruised By LaBumbard		
				Scale 1:15,840		

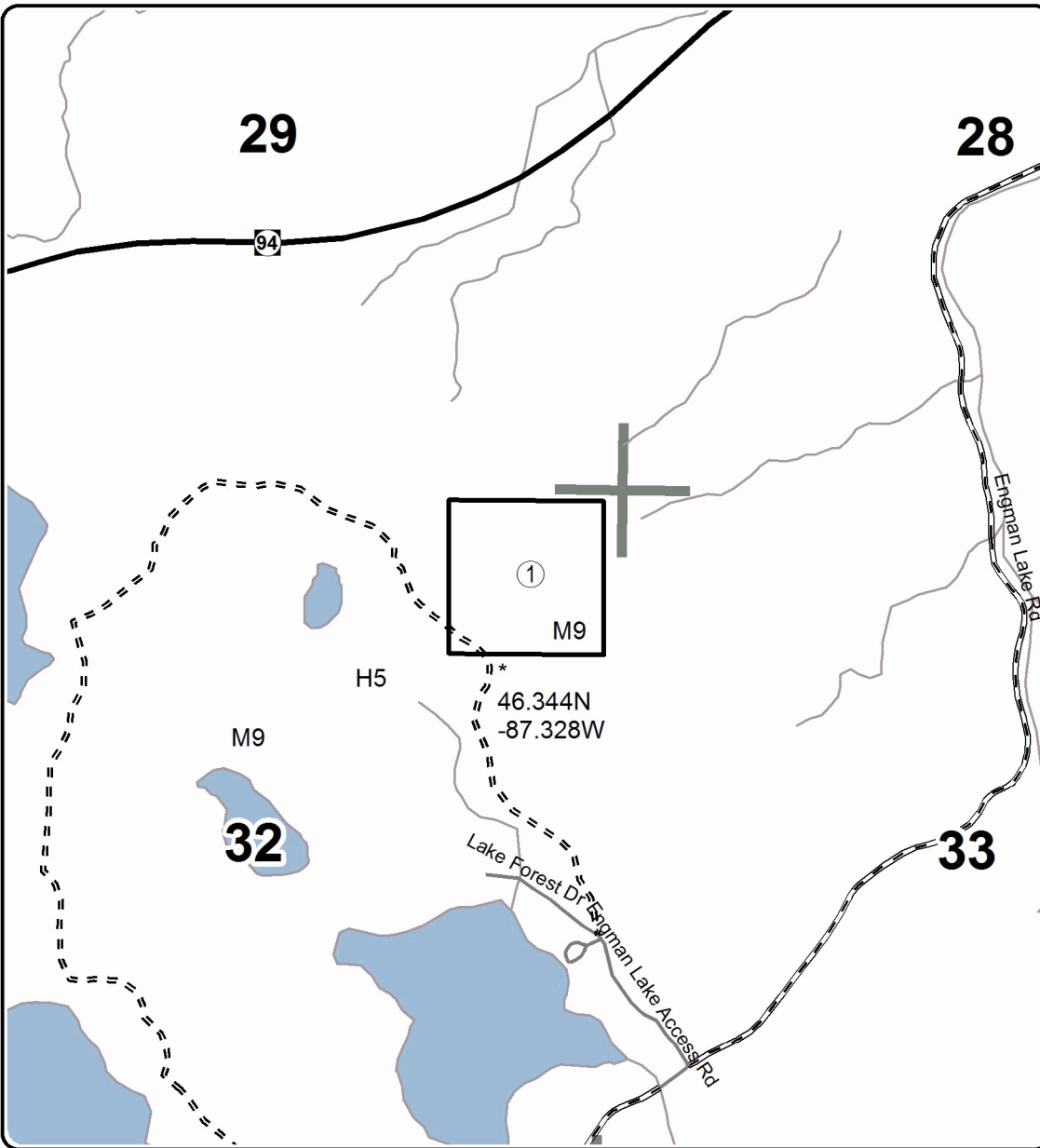
Cover Type				Density			
A = Aspen	H = Hemlock	N = Marsh	U = Upland Brush	0 = Non Stocked	5 = Pole Timber Medium		
B = Paper Birch	J = Jack Pine	O = Oak	UM = Upland Mixed	1 = Seedling Sapling Poor	6 = Pole Timber Well		
C = Cedar	L = Lowland Brush	P = Lowland Poplar	V = Bog or Marsh	2 = Seedling Sapling Medium	7 = Saw Timber Poor		
D = Treed Bog	LM = Lowland Mixed	Q = Mixed Swamp Conifer	W = White Pine	3 = Seedling Sapling Well	8 = Saw Timber Medium		
E = Swamp Hdwoods	M = Mpl, Bch, Brch	R = Red Pine	X = Non Stocked	4 = Pole Timber Poor	9 = Saw Timber Well		
F = Spruce Fir	MC = Mixed Conifer	S = Black Spruce	Z = Water				
G = Grass	MD = Mixed Deciduous	T = Tamarack					

PU	Acres
1	30.0

Engman Lake MWR

Compartment 281

30 Acres

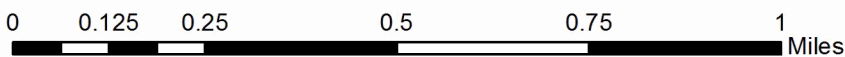
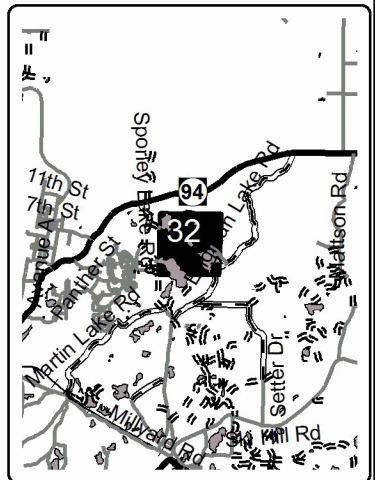


Legend

- Against State (Red)
- Section Corners
- Highway
- Paved Roads
- Gravel Roads
- == Poor Dirt Roads
- ... Closed Roads
- Lakes and Rivers



Locator Map
1:200,000



TIMBER SALE INFORMATION

Grimms Lake MWR (32-013-17)

Marquette County (Advertised Price \$26,621.10)

SALE NOTE: This sale is part of a large research project and as a result has specific harvesting requirements. Onsite review prior to bidding is highly recommended. No extensions will be allowed on this sale. However, with stipulations (see spec 7.2.7), a free 1 year extension can be applied to another State Forest Timber Sale Contract.

Access may be through private or other public land.

A timber sale contract for this lump sum, sealed bid timber sale will be awarded to the responsible bidder offering the highest sealed bid price. Bids must be at or above the following advertised price for each species:

<u>PRODUCTS & SPECIES</u>	<u>ESTIMATED UNITS*</u>	<u>ADVERTISED PRICE</u>
Sawtimber		
Red Maple	4.40 MBF	\$ 100.00 / MBF
Sugar Maple	57.90 MBF	\$ 359.00 / MBF
Pulpwood		
Black Cherry	5.00 Cords	\$ 16.60 / Cord
Red Maple	45.00 Cords	\$ 16.60 / Cord
Sugar Maple	275.00 Cords	\$ 16.60 / Cord

* The estimated units are final and not subject to adjustment. Prospective bidders are urged to examine this timber and to make their own estimates of quantity and quality.

BOND AND PAYMENT SCHEDULE:

1. A bond in the amount of \$1,331.00 to insure faithful performance of the conditions of the contract will be deposited by the successful bidder within 21 days of the sale award.
2. Cutting in any sale or unit without the required advance payment would be considered a trespass.
3. Total payment must be paid in advance or according to the following schedule:
 - (a) Ten percent (10%) of the sale value must be paid within 21 days of the sale award.
 - (b) The remainder is due before cutting begins.
4. If no cutting takes place, the 10% down payment will not be refunded.
5. Operations on the contract issued will terminate on 03/15/2018.

Description of Timber by Payment Unit (PU)

PU	MARKET GROUP	PRODUCT	QUANTITY	UNIT	ACRES	ADVERTISE PRICE
1	Red Maple	Sawtimber	4.4	MBF	30.3	\$26,621.10
	Sugar Maple		57.9	MBF		
	Black Cherry	Pulpwood	5.0	Cords		
	Red Maple		45.0	Cords		
	Sugar Maple		275.0	Cords		
TOTAL:			62.3	MBF		
TOTAL:			325.0	Cords		

Sale Specific Conditions & Requirements

Sale Name: Grimms Lake MWR

Sale Number: 32-013-17 Seq#: 1

1 - Sale Area

1.2 - Boundaries

1.2.1 - Painted boundaries (1/14)

The sale boundary is marked and identified by blue and red paint. Exterior sale boundary lines against private property are marked with blue paint. Exterior sale boundary lines against state are marked with red paint. The painted boundary line trees are not Included Timber and are to be protected.

2 - Timber Specifications

2.1 - Included Timber

2.1.7 - Leave tree marked unit(s) (6/14)

Within Payment Unit(s) 1, cut all trees that are two (2) inches or more at DBH except hemlock, white pine, and trees marked with green paint above and below stump height.

2.2 - Utilization

2.2.8 - Utilization and removal (5/14)

Within Payment Unit 1, all slash less than nine inches (<9") top diameter outside bark at the small end may not be removed from the sale area. These tops are to be left intact where they fall with branches remaining upright. This is because of the research nature of this project.

3 - Payments

3.4 - Damaged Timber

3.4.1 - Damaged timber (6/14)

General Condition and Requirement 3.4 Damaged Timber, defines liquidated damages for undesignated live merchantable trees which are cut or injured. No damage is acceptable to residual merchantable trees. Within the sale area, if more than 5% of trees (> 4.5" DBH) within a specified area of the sale are damaged, liquidated damages will be assessed for all trees damaged. Rates will be in accordance with General Condition and Requirement 3.4 Damaged Timber, or at a rate of \$50 per sawtimber tree and \$5 per pole sized tree, whichever is greater.

4 - Transportation

4.1 - Construction

4.1.12 - No new roads (1/12)

No new roads will be permitted. All operations are limited to existing roads. Skid trails only will be allowed.

5 - Operations

5.1 - Notification

5.1.1 - Pre-sale conference (10/16)

A pre-sale conference on site between the Purchaser and sale administrator is required prior to beginning any operations to discuss the logging plan, landings and research requirements. The Unit Manager or his/her representative must be contacted at least 10 days in advance to schedule the conference.

5.2 - Conduct of Operations

5.2.2 - Hazard Trees/Snags

5.2.2.1 - Den trees (10/16)

Obvious hollow and/or den trees shall be protected and left standing unless they are a safety hazard.

5.2.3 - Operating Restrictions

5.2.3.1 - Operating restrictions (9/11)

Within Payment Unit(s) 1, payments must be completed and operations must begin by February 1st 2018. This restriction is due to the necessity of assuring that all operations are on schedule for timely completion of the research project.

5.2.3.2 - Operating restrictions (9/11)

Within Payment Unit(s) 1, unless changed by written agreement, cutting and skidding is limited to the period from December 1st, 2017 to March 15th, 2018. This restriction is due to the necessity of assuring that all operations are on schedule for timely completion of the research project.

5.2.32 - Decking/landing restoration (9/13)

All decking and landing areas must have the surface area restored to a condition equal to or better than before. This is to ensure the proper regeneration of the stand. Wood debris, chips and "cookies" from trimmings must be removed or scattered away from landing and loading areas and may not be windrowed on the edge.

5.2.38 - No decking against live trees (2/04)

Cut products may not be decked against unmarked or designated leave trees.

5.4 - Soil Protection

5.4.1 - Rutting restriction, general (7/16)

Operations are to cease immediately if equipment and weather conditions result in rutting of roads and/or skid trails which is 12 inches or greater in depth and 50 feet in length. The Unit Manager or his/her representative may restrict hauling and/or skidding if ruts exceed the specified depth. With the Unit Manager or his/her representative's approval, the Purchaser may return to the area when the risk of rutting has decreased.

5.8 - Protection of Endangered Species

5.8.5 - Protection of raptor nests (3/13)

All trees with raptor nests will be protected if found during harvesting operations. Notification will be made to the Unit Manager or his/her representative who will notify the Wildlife Biologist so an on-site evaluation and recommendation can be made, if necessary.

7 - Other Conditions

7.2 - Extensions

7.2.7 - Research extension (12/16)

This is a research sale with a short contract length. The sale must be harvested promptly. One (1), twelve (12) month extension can be applied to one (1) other State Forest Timber Sale Contract owned by the purchaser or owned by one (1) designated sub-contractor of the Purchaser that works this contract. To qualify, the contract expiration date of the contract to be extended must be within twelve (12) months from the issue date of this contract. If this is the first extension on the other State Forest Timber Sale Contract, then the 5% extension fee will be waived. If this is an additional extension, the 10% fee will be reduced to 5%. The salvage extension must be used before this contract is closed-out. This specification does not alleviate the purchaser from any contractual obligations of the extended State Forest Timber Sale Contract. Per General Condition & Requirement 7.2, extensions are at the sole discretion of the DNR.

7.3 - Contract Modifications

7.3.1 - Emerald Ash Borer

7.3.1.2 - Emerald ash borer, ash or firewood on sale (2/05)

There is ash and/or "firewood" in this sale and it is located within an emerald ash borer quarantined area. The Director of the Michigan Department of Agriculture (MDA) by the authority of Act No. 72 of the Public Acts of 1945, as amended, and Quarantine Regulation No. 620, has promulgated this quarantine to prevent the further spread of this pest and sets forth: definitions, regulated articles, regulated areas, conditions of movement, violations and penalties, and special exemptions. The Purchaser must comply with this quarantine. Contact the MDA for further information.



TIMBER SALE MAP

This information provided by authority of Part 525, 1994 PA 451, as amended.

Forest Management Unit Gwinn	County Marquette	Mapped By McDonald	Date 03/17/2017	Page 1	of 1
Township 45N	Range 24W	Section(s) and Subdivision(s) Section 24	Scale 1:15,840		

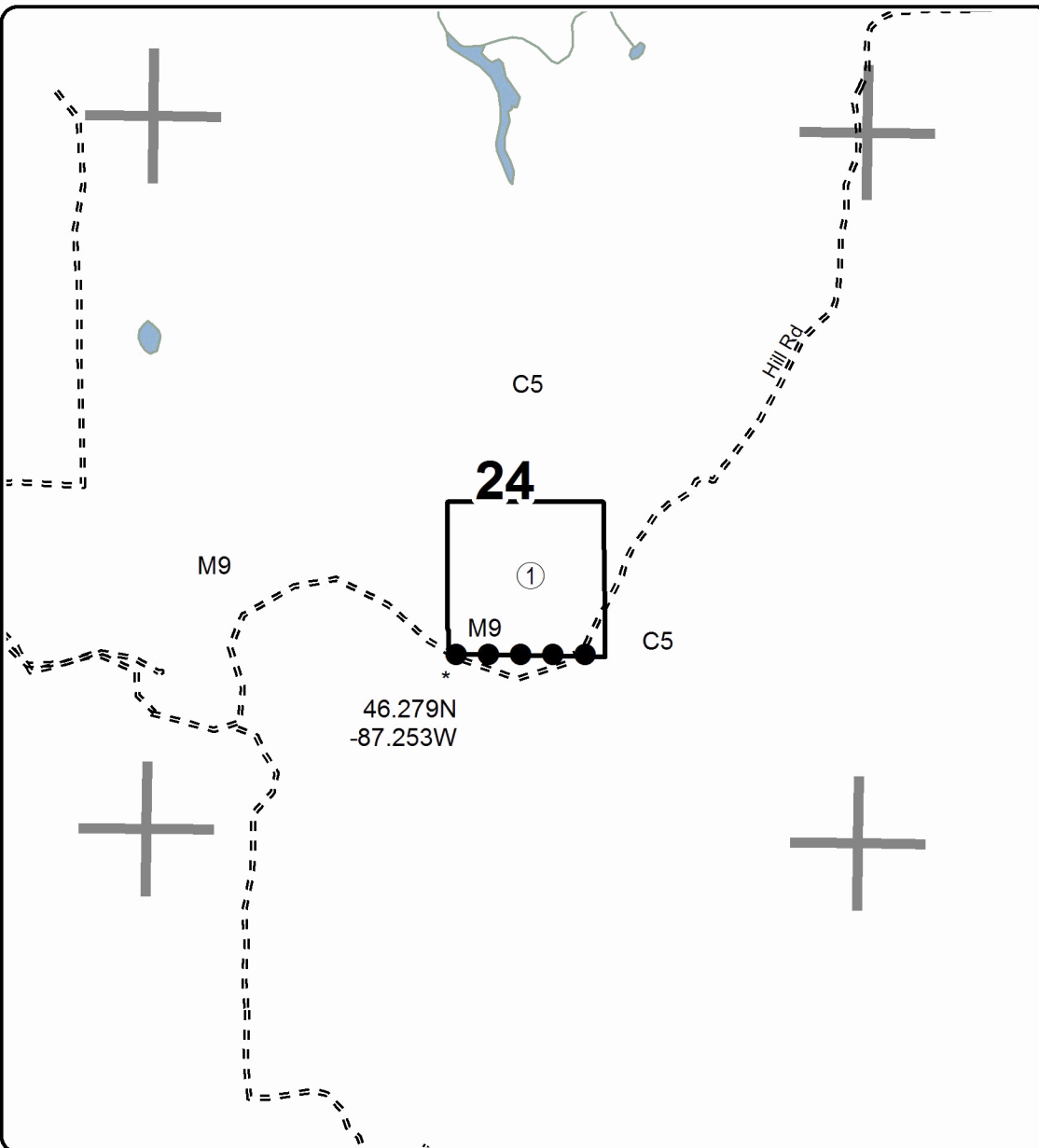
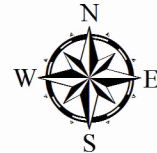
Cover Type				Density	
A = Aspen	H = Hemlock	N = Marsh	U = Upland Brush	0 = Non Stocked	5 = Pole Timber Medium
B = Paper Birch	J = Jack Pine	O = Oak	UM = Upland Mixed	1 = Seedling Sapling Poor	6 = Pole Timber Well
C = Cedar	L = Lowland Brush	P = Lowland Poplar	V = Bog or Marsh	2 = Seedling Sapling Medium	7 = Saw Timber Poor
D = Tread Bog	LM = Lowland Mixed	Q = Mixed Swamp Conifer	W = White Pine	3 = Seedling Sapling Well	8 = Saw Timber Medium
E = Swamp Hdwoods	M = Mpl, Bch, Brch	R = Red Pine	X = Non Stocked	4 = Pole Timber Poor	9 = Saw Timber Well
F = Spruce Fir	MC = Mixed Conifer	S = Black Spruce	Z = Water		
G = Grass	MD = Mixed Deciduous	T = Tamarack			

PU	Acres
1	30.3

Grimms Lake MWR

Compartment 15

30.3 Acres

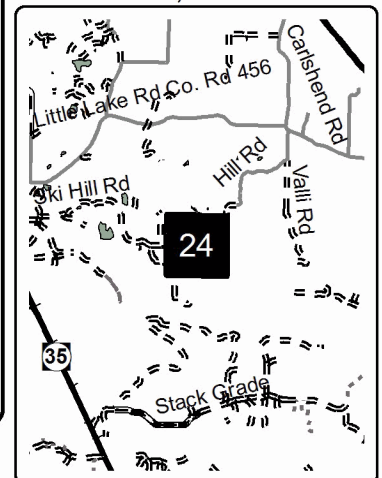


Legend

- Against State (Red)
- Private Line (Blue)
- Section Corners
- Highway
- Paved Roads
- Gravel Roads
- Poor Dirt Roads
- Closed Roads
- Lakes and Rivers



Locator Map
1:200,000



Watson Shortcut MWR (32-007-17)
 ; Marquette COUNTY

In response to the notice of sale to be held 3:00 p.m. (local time) on May 15, 2017, I am hereby submitting my sealed bid (firm offer) for the following forest products to be cut. Bids for individual species must be at or above the advertised price. All non-responsive bid forms may be rejected.

<u>PRODUCTS & SPECIES</u>	<u>ESTIMATED VOLUME*</u>	<u>ADVERTISED PRICE</u>	<u>BID PRICE</u>
Sawtimber			
Basswood	39.50 MBF	\$ 181.00/MBF	\$ _____
Sugar Maple	75.00 MBF	\$ 467.00/MBF	\$ _____
Yellow Birch	6.90 MBF	\$ 86.00/MBF	\$ _____
Pulpwood			
B. T. Aspen	56.00 Cords	\$ 28.65/Cord	\$ _____
Balsam Fir	19.00 Cords	\$ 37.85/Cord	\$ _____
Balsam Poplar	24.00 Cords	\$ 28.65/Cord	\$ _____
Basswood	189.00 Cords	\$ 13.00/Cord	\$ _____
Black Cherry	5.00 Cords	\$ 21.60/Cord	\$ _____
Quaking Aspen	63.00 Cords	\$ 28.65/Cord	\$ _____
Sugar Maple	386.00 Cords	\$ 21.60/Cord	\$ _____
Yellow Birch	17.00 Cords	\$ 21.60/Cord	\$ _____

*These estimated volumes are final and not subject to adjustment. Prospective bidders are urged to examine this timber and to make their own estimates of quantity and quality.

I understand that any or all bids may be rejected. All bids must be signed and all bid items must be bid or the bid form may be rejected. I also understand that consideration and awarding a contract will be based upon my past performance and ability to complete the contract based upon equipment and staffing subject to my control.

FEDERAL ID: _____ or SOCIAL SECURITY NUMBER: _____

Company or individual bidding: _____

Company representative's name: _____

Address: _____

City: _____ State: _____ Zip: _____

IF AVAILABLE, PLEASE PLACE THE PERSONALIZED LABEL FROM YOUR PROSPECTUS IN THE ABOVE BOX.

Individual or company representative's signature: _____ Date: _____

Phone number : _____ Email (optional): _____

THE WINNING BIDDER MUST COMPLETE THE VERIFICATION OF WORKER'S DISABILITY COMPENSATION ACT COMPLIANCE (ON REVERSE SIDE IF DOUBLE SIDED) WITHIN 21 DAYS OF SALE AWARD DATE



FOR DEPARTMENT USE ONLY
Sale Number (XX - XXX - XX - XX)
Forest Management Unit:

TIMBER SALE VERIFICATION OF WORKER'S DISABILITY COMPENSATION ACT COMPLIANCE

*As required by Act 317, P.A. 1969 (Worker's Compensation) and
Part 5 of Act 451 of 1994, as amended.*

VERIFICATION OF WORKER'S DISABILITY COMPENSATION ACT COMPLIANCE

- This verification must be completed and submitted within 21 days of contract award and prior to the issuance of the timber sale contract.
- In addition, if boxes 2B or 2C are checked, then Notice of Exclusion or Certificate of Insurance must be submitted within twenty-one (21) days of the contract award and prior to the issuance of the timber sale contract.
- All information must be typed or printed except for written signatures.

Please Check Appropriate Categories:

1. My business is organized as (you **must** check one of the boxes below):
 - A. Sole Proprietorship (individual)
 - B. Partnership
 - C. Corporation

2. You **must** check one of the boxes below:
 - A. I certify my business is a sole proprietorship and it has no employees but the sole proprietor. I am not subject to the Worker's Compensation Laws.
 - B. I certify my business has satisfied its obligation to the Worker's Compensation Act through the use of an approved Notice of Exclusion (BWC-337, Rev. 5/96). I will provide a copy of the Notice of Exclusion within 21 days of the contract award. (For questions or a copy of the BWC-337, please call the Worker's Compensation Bureau at 517-322-1195).
 - C. I certify my business has a Worker's Compensation Policy. I will provide an original Certificate of Insurance within twenty-one (21) days of the contract award.

3. If you have checked item 2(A) or 2(B), you **must** indicate the number of **both** full-time and part-time employees, other than yourself, including family members and active partners (if none, you must enter "0").

_____ Full-time Employees

_____ Part-time Employees

Name of Business		Federal ID (or) Social Security No.	
Address		Telephone ()	
City	State	ZIP	

I hereby certify that the above information is true and correct. I agree to notify the Michigan DNR of any changes that occur in factors affecting my coverage during any of my present and future operations.

Signature of Owner or Authorized Representative

Title

Date

Please complete the "SEALED BID" information on the next page

West Gem MWR (32-010-17)
 ; Marquette COUNTY

In response to the notice of sale to be held 3:00 p.m. (local time) on May 15, 2017, I am hereby submitting my sealed bid (firm offer) for the following forest products to be cut. Bids for individual species must be at or above the advertised price. All non-responsive bid forms may be rejected.

<u>PRODUCTS & SPECIES</u>	<u>ESTIMATED VOLUME*</u>	<u>ADVERTISED PRICE</u>	<u>BID PRICE</u>
Sawtimber			
Basswood	13.20 MBF	\$ 140.00/MBF	\$ _____
Sugar Maple	51.90 MBF	\$ 359.00/MBF	\$ _____
White Ash	1.10 MBF	\$ 44.00/MBF	\$ _____
Pulpwood			
Balsam Poplar	2.00 Cords	\$ 22.05/Cord	\$ _____
Basswood	30.00 Cords	\$ 10.00/Cord	\$ _____
Sugar Maple	241.00 Cords	\$ 16.60/Cord	\$ _____
White Ash	1.00 Cords	\$ 16.60/Cord	\$ _____

*These estimated volumes are final and not subject to adjustment. Prospective bidders are urged to examine this timber and to make their own estimates of quantity and quality.

I understand that any or all bids may be rejected. All bids must be signed and all bid items must be bid or the bid form may be rejected. I also understand that consideration and awarding a contract will be based upon my past performance and ability to complete the contract based upon equipment and staffing subject to my control.

FEDERAL ID: _____ or SOCIAL SECURITY NUMBER: _____

Company or individual bidding: _____

Company representative's name: _____

Address: _____

City: _____ State: _____ Zip: _____

IF AVAILABLE, PLEASE PLACE THE PERSONALIZED LABEL FROM YOUR PROSPECTUS IN THE ABOVE BOX.

Individual or company representative's signature: _____ Date: _____

Phone number : _____ Email (optional): _____

THE WINNING BIDDER MUST COMPLETE THE VERIFICATION OF WORKER'S DISABILITY COMPENSATION ACT COMPLIANCE (ON REVERSE SIDE IF DOUBLE SIDED) WITHIN 21 DAYS OF SALE AWARD DATE



FOR DEPARTMENT USE ONLY	
Sale Number (XX - XXX - XX - XX)	
Forest Management Unit:	

TIMBER SALE VERIFICATION OF WORKER'S DISABILITY COMPENSATION ACT COMPLIANCE

As required by Act 317, P.A. 1969 (Worker's Compensation) and
Part 5 of Act 451 of 1994, as amended.

VERIFICATION OF WORKER'S DISABILITY COMPENSATION ACT COMPLIANCE

- This verification must be completed and submitted within 21 days of contract award and prior to the issuance of the timber sale contract.
- In addition, if boxes 2B or 2C are checked, then Notice of Exclusion or Certificate of Insurance must be submitted within twenty-one (21) days of the contract award and prior to the issuance of the timber sale contract.
- All information must be typed or printed except for written signatures.

Please Check Appropriate Categories:

1. My business is organized as (you **must** check one of the boxes below):
 - A. Sole Proprietorship (individual)
 - B. Partnership
 - C. Corporation
2. You **must** check one of the boxes below:
 - A. I certify my business is a sole proprietorship and it has no employees but the sole proprietor. I am not subject to the Worker's Compensation Laws.
 - B. I certify my business has satisfied its obligation to the Worker's Compensation Act through the use of an approved Notice of Exclusion (BWC-337, Rev. 5/96). I will provide a copy of the Notice of Exclusion within 21 days of the contract award. (For questions or a copy of the BWC-337, please call the Worker's Compensation Bureau at 517-322-1195).
 - C. I certify my business has a Worker's Compensation Policy. I will provide an original Certificate of Insurance within twenty-one (21) days of the contract award.
3. If you have checked item 2(A) or 2(B), you **must** indicate the number of **both** full-time and part-time employees, other than yourself, including family members and active partners (if none, you must enter "0").

_____ Full-time Employees

_____ Part-time Employees

Name of Business		Federal ID (or) Social Security No.	
Address		Telephone ()	
City	State	ZIP	

I hereby certify that the above information is true and correct. I agree to notify the Michigan DNR of any changes that occur in factors affecting my coverage during any of my present and future operations.

Signature of Owner or Authorized Representative

Title

Date

Please complete the "SEALED BID" information on the next page

Ladoga/Paulson MWR (32-008-17)
; Alger COUNTY

In response to the notice of sale to be held 3:00 p.m. (local time) on May 15, 2017, I am hereby submitting my sealed bid (firm offer) for the following forest products to be cut. Bids for individual species must be at or above the advertised price. All non-responsive bid forms may be rejected.

<u>PRODUCTS & SPECIES</u>	<u>ESTIMATED VOLUME*</u>	<u>ADVERTISED PRICE</u>	<u>BID PRICE</u>
Sawtimber			
Red Maple	0.80 MBF	\$ 100.00/MBF	\$ _____
Sugar Maple	19.10 MBF	\$ 359.00/MBF	\$ _____
Pulpwood			
Basswood	3.00 Cords	\$ 10.00/Cord	\$ _____
Black Cherry	21.00 Cords	\$ 16.60/Cord	\$ _____
Red Maple	18.00 Cords	\$ 16.60/Cord	\$ _____
Sugar Maple	214.00 Cords	\$ 16.60/Cord	\$ _____

*These estimated volumes are final and not subject to adjustment. Prospective bidders are urged to examine this timber and to make their own estimates of quantity and quality.

I understand that any or all bids may be rejected. All bids must be signed and all bid items must be bid or the bid form may be rejected. I also understand that consideration and awarding a contract will be based upon my past performance and ability to complete the contract based upon equipment and staffing subject to my control.

FEDERAL ID: _____ or SOCIAL SECURITY NUMBER: _____

Company or individual bidding: _____

Company representative's name: _____

Address: _____

City: _____ State: _____ Zip: _____

IF AVAILABLE, PLEASE PLACE THE PERSONALIZED LABEL FROM YOUR PROSPECTUS IN THE ABOVE BOX.

Individual or company representative's signature: _____ Date: _____

Phone number : _____ Email (optional): _____

THE WINNING BIDDER MUST COMPLETE THE VERIFICATION OF WORKER'S DISABILITY COMPENSATION ACT COMPLIANCE (ON REVERSE SIDE IF DOUBLE SIDED) WITHIN 21 DAYS OF SALE AWARD DATE



FOR DEPARTMENT USE ONLY
Sale Number (XX - XXX - XX - XX)
Forest Management Unit:

TIMBER SALE VERIFICATION OF WORKER'S DISABILITY COMPENSATION ACT COMPLIANCE

*As required by Act 317, P.A. 1969 (Worker's Compensation) and
Part 5 of Act 451 of 1994, as amended.*

VERIFICATION OF WORKER'S DISABILITY COMPENSATION ACT COMPLIANCE

- This verification must be completed and submitted within 21 days of contract award and prior to the issuance of the timber sale contract.
- In addition, if boxes 2B or 2C are checked, then Notice of Exclusion or Certificate of Insurance must be submitted within twenty-one (21) days of the contract award and prior to the issuance of the timber sale contract.
- All information must be typed or printed except for written signatures.

Please Check Appropriate Categories:

1. My business is organized as (you **must** check one of the boxes below):
 - A. Sole Proprietorship (individual)
 - B. Partnership
 - C. Corporation

2. You **must** check one of the boxes below:
 - A. I certify my business is a sole proprietorship and it has no employees but the sole proprietor. I am not subject to the Worker's Compensation Laws.
 - B. I certify my business has satisfied its obligation to the Worker's Compensation Act through the use of an approved Notice of Exclusion (BWC-337, Rev. 5/96). I will provide a copy of the Notice of Exclusion within 21 days of the contract award. (For questions or a copy of the BWC-337, please call the Worker's Compensation Bureau at 517-322-1195).
 - C. I certify my business has a Worker's Compensation Policy. I will provide an original Certificate of Insurance within twenty-one (21) days of the contract award.

3. If you have checked item 2(A) or 2(B), you **must** indicate the number of **both** full-time and part-time employees, other than yourself, including family members and active partners (if none, you must enter "0").

_____ Full-time Employees

_____ Part-time Employees

Name of Business		Federal ID (or) Social Security No.	
Address		Telephone ()	
City	State	ZIP	

I hereby certify that the above information is true and correct. I agree to notify the Michigan DNR of any changes that occur in factors affecting my coverage during any of my present and future operations.

Signature of Owner or Authorized Representative

Title

Date

Please complete the "SEALED BID" information on the next page

Engman Lake MWR (32-011-17)
 ; Marquette COUNTY

In response to the notice of sale to be held 3:00 p.m. (local time) on May 15, 2017, I am hereby submitting my sealed bid (firm offer) for the following forest products to be cut. Bids for individual species must be at or above the advertised price. All non-responsive bid forms may be rejected.

<u>PRODUCTS & SPECIES</u>	<u>ESTIMATED VOLUME*</u>	<u>ADVERTISED PRICE</u>	<u>BID PRICE</u>
Sawtimber			
Basswood	2.00 MBF	\$ 140.00/MBF	\$ _____
Black Cherry	7.60 MBF	\$ 111.00/MBF	\$ _____
Red Maple	1.00 MBF	\$ 100.00/MBF	\$ _____
Red Oak	4.30 MBF	\$ 164.00/MBF	\$ _____
Sugar Maple	38.30 MBF	\$ 359.00/MBF	\$ _____
Yellow Birch	0.80 MBF	\$ 66.00/MBF	\$ _____
Pulpwood			
Basswood	8.00 Cords	\$ 10.00/Cord	\$ _____
Black Cherry	29.00 Cords	\$ 16.60/Cord	\$ _____
Red Maple	12.00 Cords	\$ 16.60/Cord	\$ _____
Red Oak	6.00 Cords	\$ 12.70/Cord	\$ _____
Sugar Maple	137.00 Cords	\$ 16.60/Cord	\$ _____
Yellow Birch	7.00 Cords	\$ 16.60/Cord	\$ _____

*These estimated volumes are final and not subject to adjustment. Prospective bidders are urged to examine this timber and to make their own estimates of quantity and quality.

I understand that any or all bids may be rejected. All bids must be signed and all bid items must be bid or the bid form may be rejected. I also understand that consideration and awarding a contract will be based upon my past performance and ability to complete the contract based upon equipment and staffing subject to my control.

FEDERAL ID: _____ or SOCIAL SECURITY NUMBER: _____

Company or individual bidding: _____

Company representative's name: _____

Address: _____

City: _____ State: _____ Zip: _____

IF AVAILABLE, PLEASE PLACE THE PERSONALIZED LABEL FROM YOUR PROSPECTUS IN THE ABOVE BOX.

Individual or company representative's signature: _____ Date: _____

Phone number : _____ Email (optional): _____

THE WINNING BIDDER MUST COMPLETE THE VERIFICATION OF WORKER'S DISABILITY COMPENSATION ACT COMPLIANCE (ON REVERSE SIDE IF DOUBLE SIDED) WITHIN 21 DAYS OF SALE AWARD DATE



FOR DEPARTMENT USE ONLY
Sale Number (XX - XXX - XX - XX)
Forest Management Unit:

TIMBER SALE VERIFICATION OF WORKER'S DISABILITY COMPENSATION ACT COMPLIANCE

*As required by Act 317, P.A. 1969 (Worker's Compensation) and
Part 5 of Act 451 of 1994, as amended.*

VERIFICATION OF WORKER'S DISABILITY COMPENSATION ACT COMPLIANCE

- This verification must be completed and submitted within 21 days of contract award and prior to the issuance of the timber sale contract.
- In addition, if boxes 2B or 2C are checked, then Notice of Exclusion or Certificate of Insurance must be submitted within twenty-one (21) days of the contract award and prior to the issuance of the timber sale contract.
- All information must be typed or printed except for written signatures.

Please Check Appropriate Categories:

1. My business is organized as (you **must** check one of the boxes below):
 - A. Sole Proprietorship (individual)
 - B. Partnership
 - C. Corporation
2. You **must** check one of the boxes below:
 - A. I certify my business is a sole proprietorship and it has no employees but the sole proprietor. I am not subject to the Worker's Compensation Laws.
 - B. I certify my business has satisfied its obligation to the Worker's Compensation Act through the use of an approved Notice of Exclusion (BWC-337, Rev. 5/96). I will provide a copy of the Notice of Exclusion within 21 days of the contract award. (For questions or a copy of the BWC-337, please call the Worker's Compensation Bureau at 517-322-1195).
 - C. I certify my business has a Worker's Compensation Policy. I will provide an original Certificate of Insurance within twenty-one (21) days of the contract award.
3. If you have checked item 2(A) or 2(B), you **must** indicate the number of **both** full-time and part-time employees, other than yourself, including family members and active partners (if none, you must enter "0").

_____ Full-time Employees

_____ Part-time Employees

Name of Business		Federal ID (or) Social Security No.	
Address		Telephone ()	
City	State	ZIP	

I hereby certify that the above information is true and correct. I agree to notify the Michigan DNR of any changes that occur in factors affecting my coverage during any of my present and future operations.

Signature of Owner or Authorized Representative

Title

Date

Please complete the "SEALED BID" information on the next page

Grimms Lake MWR (32-013-17)
; Marquette COUNTY

In response to the notice of sale to be held 3:00 p.m. (local time) on May 15, 2017, I am hereby submitting my sealed bid (firm offer) for the following forest products to be cut. Bids for individual species must be at or above the advertised price. All non-responsive bid forms may be rejected.

<u>PRODUCTS & SPECIES</u>	<u>ESTIMATED VOLUME*</u>	<u>ADVERTISED PRICE</u>	<u>BID PRICE</u>
Sawtimber			
Red Maple	4.40 MBF	\$ 100.00/MBF	\$ _____
Sugar Maple	57.90 MBF	\$ 359.00/MBF	\$ _____
Pulpwood			
Black Cherry	5.00 Cords	\$ 16.60/Cord	\$ _____
Red Maple	45.00 Cords	\$ 16.60/Cord	\$ _____
Sugar Maple	275.00 Cords	\$ 16.60/Cord	\$ _____

*These estimated volumes are final and not subject to adjustment. Prospective bidders are urged to examine this timber and to make their own estimates of quantity and quality.

I understand that any or all bids may be rejected. All bids must be signed and all bid items must be bid or the bid form may be rejected. I also understand that consideration and awarding a contract will be based upon my past performance and ability to complete the contract based upon equipment and staffing subject to my control.

FEDERAL ID: ____ - ____ - ____ or SOCIAL SECURITY NUMBER: ____ - ____ - ____

Company or individual bidding: _____

Company representative's name: _____

Address: _____

City: _____ State: _____ Zip: _____

IF AVAILABLE, PLEASE PLACE THE PERSONALIZED LABEL FROM YOUR PROSPECTUS IN THE ABOVE BOX.

Individual or company representative's signature: _____ Date: _____

Phone number : _____ Email (optional): _____

THE WINNING BIDDER MUST COMPLETE THE VERIFICATION OF WORKER'S DISABILITY COMPENSATION ACT COMPLIANCE (ON REVERSE SIDE IF DOUBLE SIDED) WITHIN 21 DAYS OF SALE AWARD DATE



FOR DEPARTMENT USE ONLY
Sale Number (XX - XXX - XX - XX)
Forest Management Unit:

TIMBER SALE VERIFICATION OF WORKER'S DISABILITY COMPENSATION ACT COMPLIANCE

*As required by Act 317, P.A. 1969 (Worker's Compensation) and
Part 5 of Act 451 of 1994, as amended.*

VERIFICATION OF WORKER'S DISABILITY COMPENSATION ACT COMPLIANCE

- This verification must be completed and submitted within 21 days of contract award and prior to the issuance of the timber sale contract.
- In addition, if boxes 2B or 2C are checked, then Notice of Exclusion or Certificate of Insurance must be submitted within twenty-one (21) days of the contract award and prior to the issuance of the timber sale contract.
- All information must be typed or printed except for written signatures.

Please Check Appropriate Categories:

1. My business is organized as (you **must** check one of the boxes below):
 - A. Sole Proprietorship (individual)
 - B. Partnership
 - C. Corporation

2. You **must** check one of the boxes below:
 - A. I certify my business is a sole proprietorship and it has no employees but the sole proprietor. I am not subject to the Worker's Compensation Laws.
 - B. I certify my business has satisfied its obligation to the Worker's Compensation Act through the use of an approved Notice of Exclusion (BWC-337, Rev. 5/96). I will provide a copy of the Notice of Exclusion within 21 days of the contract award. (For questions or a copy of the BWC-337, please call the Worker's Compensation Bureau at 517-322-1195).
 - C. I certify my business has a Worker's Compensation Policy. I will provide an original Certificate of Insurance within twenty-one (21) days of the contract award.

3. If you have checked item 2(A) or 2(B), you **must** indicate the number of **both** full-time and part-time employees, other than yourself, including family members and active partners (if none, you must enter "0").

_____ Full-time Employees

_____ Part-time Employees

Name of Business		Federal ID (or) Social Security No.	
Address		Telephone ()	
City	State	ZIP	

I hereby certify that the above information is true and correct. I agree to notify the Michigan DNR of any changes that occur in factors affecting my coverage during any of my present and future operations.

Signature of Owner or Authorized Representative

Title

Date

Please complete the "SEALED BID" information on the next page