



**DEPARTMENT OF NATURAL RESOURCES  
STATE OF MICHIGAN**

**TIMBER SALE PROSPECTUS #5961**

SCHEDULED SALE DATE AND TIME: 3:00 p.m. (local time) on August 22, 2017.

LOCATION: MANTON FIELD OFFICE, 521 N MICHIGAN, MANTON, MI 49663.

PROSPECTUS NOTE: The bidder is advised to inspect the sale area and review the location, estimated volumes, operating costs and contract terms of proposed sales. Please be aware that some landowners may request 60 days or more notice for access across their land.

Notice is hereby given that bids will be received by the Unit Manager, CADILLAC MANAGEMENT UNIT, for certain timber on the following described lands:

131 Pine (63-001-17)

Wexford County, Advertised Price \$122,461.30, 134.4 Acres, Hardwood, Red Pine.

139 Pine (63-002-17)

Wexford County, Advertised Price \$93,785.85, 158.3 Acres, Aspen, Red Pine.

SALE NOTE: A recreation site such as a trail, pathway, or campground is within the sale area or the vicinity. Certain restrictions/specifications may be applicable including time restrictions.

86 Mix (63-010-17)

Missaukee County, Advertised Price \$11,911.90, 42.0 Acres, Red Oak, White Pine.

## BID INSTRUCTIONS (VER. 09/02/2016):

### 1. Scheduled Bid Location, Date, and Time (2/11)

Bids must be received by the Unit Manager, MANTON OFFICE, 521 N MICHIGAN, MANTON, MI 49663, no later than 3:00 p.m. (local time) on August 22, 2017. For further information concerning this sale, contact Joe Ventimglia at 231-824-3591 extension 11.

### 2. Bidder's Qualifications (5/16)

Purchaser shall obtain workers compensation insurance to cover claims under Michigan's Worker's Disability Compensation Act of 1969 or similar employee benefit act of any other state applicable to an employee. If all or part of a timber sale was prepared by a private contractor, the contractor and that contractor's company are not permitted to bid on the timber sale contract. Bids will not be accepted from individuals or companies appearing on the DNR/FRD No-Bid List. This list contains the names of purchasers who previously failed to execute a contract within 21-days or who have a history of poor performance.

### 3. Preparation of Sealed Bids (5/16)

Bid Forms may be completed online thru Michigan DNR Timber Sale Online Bidding (OLB) at [www.michigan.gov/timberbidding](http://www.michigan.gov/timberbidding) or by completing the hardcopy Bid Form found in the Timber Sale Prospectus. Hardcopy Bid Forms shall be manually signed in ink. Registration in OLB is considered your 'signature' for all bids submitted thru that system. Bid prices must be entered for each species and product in the Bid Price column for all material subject to bidding and all fill-in blanks must be completed. If erasures or other changes appear on the hardcopy Bid Form, each erasure or change must be initialed by the person signing the bid.

### 4. Submission of Sealed Bids (5/16)

Bid forms may be obtained from the Unit Manager or thru OLB. Bids may be submitted hardcopy or thru OLB. All hardcopy bids must be submitted on the bid form and in an envelope clearly identified as described in this section. NOTE: Only one bid form per bid envelope. Sealed bids must be submitted to the Unit office designated in the prospectus and must be submitted at or prior to the time established in the prospectus. The envelope should show on the outside (a) the sale name or number and (b) the date and time of bid opening, as shown in the prospectus. Bids received after the time specified in the sale prospectus are late bids and will be rejected.

It is possible for a bidder to submit multiple bids on a single sale. For example, a bid may be submitted hardcopy and a bid may be submitted thru OLB. Or, two bidders from the same company could both submit bids on the same sale. If this were to happen, the State would accept all bids received and award the contract accordingly. All bidding and contractual requirements would apply to all bids received.

### 5. Public Opening of Sealed Bids (7/16)

If conditions permit, the sealed bids will be publicly opened and posted at the time and place set in the prospectus.

If a bidder, present at a bid opening, has submitted bids on more than one sale, that bidder may withdraw their unopened bid envelopes or announce the withdrawal of their online bid after being declared the successful bidder on one sale.

### 6. Award of Contract (1/11)

Award of the contract will be made to the Bidder whose bid, conforming to the prospectus, is most advantageous to the State of Michigan on the basis of total value at rates bid for the estimated quantities. The State reserves the right to reject any bid or waive any minor irregularity in bids received. A written award mailed (or otherwise furnished) to the successful Bidder shall be deemed to result in a binding contract without further action by either party.

### 7. Down Payment (1/11)

The Bidder to whom award is made must make a down payment within 21 days of the sale award. The amount of the down payment will be calculated as shown in the Bond and Payment Schedule of this prospectus. Only cash may be used to meet this requirement.

### 8. Performance Security (1/11)

As guarantee of faithful performance, a cash bond, certificate of deposit, surety bond or irrevocable letter of credit (LOC) is required within 21 days of the sale award. The amount of the performance security is shown in the Bond and

Payment Schedule of this prospectus. If an LOC or surety is used, the coverage must extend for at least 6 months beyond the contract expiration.

#### 9. Timber Sale Contract (9/14)

Additional conditions and requirements common to all timber sales are listed on the timber sale contract (R4031) and are available on line at [www.michigan.gov/timber](http://www.michigan.gov/timber). Contact the Unit Manager for additional information or a sample contract. Within 21 days of the date of the award letter, the bidder must sign the contract and provide the required down payment, performance security, and verification of worker's disability compensation. The down payment and performance security shall be in accordance with the provisions of the timber sale contract, in the sums stated in this prospectus. If these actions are not taken, then the Bidder, the Bidder's corporation, and the corporation's principals may not be permitted to bid on State timber sales for a period of 1 year. In addition, the Bidder certifies that if awarded this contract, the Bidder will complete the timber sale contract in accordance with its terms and any modifications thereof including requirements to purchase, cut, and remove the included timber by the expiration date.

#### 10. Disclaimer of Estimates and Bidder's Warranty of Inspection (7/16)

Before submitting this bid, the Bidder is advised and cautioned to inspect the sale area, review the requirements of the sale contract, and take other steps as may be reasonably necessary to ascertain the location, estimated volumes, construction estimates, and operating costs of the proposed sale. Failure to do so will not relieve the Bidder from responsibility for completing the contract.

The Bidder warrants that this bid is submitted solely on the basis of the Bidder's examination and inspection of the quality and quantity of the timber offered for sale and the Bidder's opinion of the value thereof and the costs of recovery. No reliance should be placed on the State of Michigan's estimates of timber quality, quantity or costs of recovery. Bidder further acknowledges that the State of Michigan: (i) expressly disclaims any warranty of fitness of timber for any purpose; (ii) offers this timber as is without any warranty of quality (merchantability) or quantity and (iii) expressly disclaims any warranty as to the quantity or quality of timber sold.

#### 11. Certification and Chain-of-Custody (10/14)

Unless otherwise indicated in the contract under section 7 – Other Conditions of the Sale Specific Conditions & Requirements, the area encompassed by this timber sale is certified to the standards of the Forest Stewardship Council (FSC) - Certificate #SCS-FM/COC-00090N and the Sustainable Forestry Initiative (SFI) - Certificate #NSF-SFIS-5Y031-SF5. Forest products from this sale may be delivered to the mill as "FSC 100% and / or SFI certified" as long as the contractor hauling the forest products is chain-of-custody (COC) certified or covered under a COC certificate from the destination mill. The purchaser is responsible for maintaining COC after leaving the sale area.

#### 12. Good Neighbor Authority (GNA) Requirements (7/16)

If the name of this timber sales contains the acronym GNA, it is authorized by the Good Neighbor Authority (GNA) and covered by various agreements between the U.S. Forest Service and the State. The timber sale occurs on federal land and the following conditions apply:

GNA contracts on US Forest Service land will not be awarded to purchasers on the Federal list of excluded parties. The System for Award Management (SAM) will be checked for active excluded parties prior to award of contract. In addition, the Bidder to whom award is made must complete an Assurance Regarding Felony Conviction or Tax Delinquent Status for Corporate Applicants (AD-3031).

#### 13. Good Neighbor Authority (GNA) Requirements, con't (9/16)

Bidder certifies, by signing this bid form, that to the best of Bidder's knowledge that the following representations are accurate and complete.

- a. That the Bidder and its principals are not presently debarred, suspended, proposed for debarment, declared ineligible, or voluntary excluded from timber sales (covered transactions) by any Federal department or agency.
- b. That the Bidder and its principals have not within a 3-year period preceding this bid been convicted of or had a civil judgment rendered against them for commission of fraud or a criminal offense in connection with obtaining, attempting to obtain, or performing a public (Federal, State, or local) transaction or contract under a public transaction; violation of Federal or State antitrust statutes or commission of embezzlement, theft, forgery, bribery, falsification or destruction of records, making false statements, or receiving stolen property.

c. That the Bidder and its principals are not presently indicted for or otherwise criminally or civilly charged by a governmental entity (Federal, State, or local) with commission of any of the offenses enumerated in paragraph b of this certification.

d. That the Bidder and its principals have not within a 3-year period preceding this bid had one or more public transactions (Federal, State, or local) terminated for breach or default of a timber or forest product contract.

Bidders that cannot certify this requirement, in whole or in part, shall submit an explanation with their bid.

KEITH CREAGH

Director

TIMBER SALE INFORMATION

131 Pine (63-001-17)

Wexford County (Advertised Price \$122,461.30)

A timber sale contract for this lump sum, sealed bid timber sale will be awarded to the responsible bidder offering the highest sealed bid price. Bids must be at or above the following advertised price for each species:

<u>PRODUCTS &amp; SPECIES</u>	<u>ESTIMATED UNITS*</u>	<u>ADVERTISED PRICE</u>
Sawtimber		
Basswood	26.00 MBF	\$ 105.00 / MBF
Black Cherry	14.20 MBF	\$ 119.00 / MBF
Quaking Aspen	32.20 MBF	\$ 120.00 / MBF
Red Maple	40.00 MBF	\$ 131.00 / MBF
Red Oak	26.00 MBF	\$ 245.00 / MBF
Red Pine	424.50 MBF	\$ 108.00 / MBF
Pulpwood		
Basswood	110.00 Cords	\$ 16.80 / Cord
Black Cherry	76.00 Cords	\$ 21.10 / Cord
Quaking Aspen	224.00 Cords	\$ 17.05 / Cord
Red Maple	242.00 Cords	\$ 21.10 / Cord
Red Oak	104.00 Cords	\$ 18.00 / Cord
Red Pine	1,050.00 Cords	\$ 40.45 / Cord

\* The total volume is statistically estimated within plus (+) or minus (-) 11.15 percent. The estimated units are final and not subject to adjustment. Prospective bidders are urged to examine this timber and to make their own estimates of quantity and quality.

**BOND AND PAYMENT SCHEDULE:**

1. A bond in the amount of \$6,123.00 to insure faithful performance of the conditions of the contract will be deposited by the successful bidder within 21 days of the sale award.
2. Cutting in any sale or unit without the required advance payment would be considered a trespass.
3. Total payment must be paid in advance or according to the following schedule:
  - (a) Ten percent (10%) of the sale value must be paid within 21 days of the sale award.
  - (b) The 10% down payment will be credited towards the first unit cut.
4. If no cutting takes place, the 10% down payment will not be refunded.
5. Operations on the contract issued will terminate on 09/30/2019.

**Description of Timber by Payment Unit (PU)**

PU	MARKET GROUP	PRODUCT	QUANTITY	UNIT	ACRES	ADVERTISE PRICE	
1	Basswood	Sawtimber	14.6	MBF	75.6	\$68,877.85	
	<i>American Elm</i>		1.6	<i>MBF</i>			
	<i>Basswood</i>		13.0	<i>MBF</i>			
	Black Cherry		8.0	MBF			
	Quaking Aspen		18.1	MBF			
	Red Maple		22.5	MBF			
	<i>Red Maple</i>		19.7	<i>MBF</i>			
	<i>Sugar Maple</i>		1.2	<i>MBF</i>			
	<i>White Ash</i>		1.6	<i>MBF</i>			
	Red Oak		14.6	MBF			
	Red Pine		238.7	MBF			
	<i>Jack Pine</i>		0.4	<i>MBF</i>			
	<i>Red Pine</i>		238.3	<i>MBF</i>			
	Basswood		Pulpwood	62.0			Cords
	Black Cherry			43.0			Cords
	Quaking Aspen			126.0			Cords
	Red Maple			136.0			Cords
	<i>American Elm</i>			3.0			<i>Cords</i>
	<i>Red Maple</i>			125.0			<i>Cords</i>
	<i>Sugar Maple</i>			4.0			<i>Cords</i>
	<i>White Ash</i>	4.0		<i>Cords</i>			
	Red Oak	58.0		Cords			
	Red Pine	591.0		Cords			
	<i>Jack Pine</i>	3.0	<i>Cords</i>				
	<i>Red Pine</i>	582.0	<i>Cords</i>				
	<i>White Pine</i>	6.0	<i>Cords</i>				
	2	Basswood	Sawtimber	11.4	MBF	58.8	\$53,583.45
		<i>American Elm</i>		1.2	<i>MBF</i>		
		<i>Basswood</i>		10.2	<i>MBF</i>		
		Black Cherry		6.2	MBF		
Quaking Aspen		14.1		MBF			
Red Maple		17.5		MBF			
<i>Red Maple</i>		15.3		<i>MBF</i>			
<i>Sugar Maple</i>		1.0		<i>MBF</i>			
<i>White Ash</i>		1.2		<i>MBF</i>			
Red Oak		11.4		MBF			
Red Pine		185.8		MBF			
<i>Jack Pine</i>		0.4		<i>MBF</i>			
<i>Red Pine</i>		185.4		<i>MBF</i>			
Basswood		Pulpwood		48.0	Cords		
Black Cherry			33.0	Cords			
Quaking Aspen			98.0	Cords			
Red Maple			106.0	Cords			
<i>American Elm</i>			2.0	<i>Cords</i>			
<i>Red Maple</i>			97.0	<i>Cords</i>			
<i>Sugar Maple</i>			4.0	<i>Cords</i>			
<i>White Ash</i>			3.0	<i>Cords</i>			
Red Oak			46.0	Cords			
Red Pine			459.0	Cords			
<i>Jack Pine</i>		2.0	<i>Cords</i>				
<i>Red Pine</i>	452.0	<i>Cords</i>					
<i>White Pine</i>	5.0	<i>Cords</i>					
TOTAL:			562.9	MBF			
TOTAL:			1,806.0	Cords			

## Sale Specific Conditions & Requirements

**Sale Name: 131 Pine**

**Sale Number: 63-001-17 Seq#: 1**

### 1 - Sale Area

#### 1.2 - Boundaries

##### 1.2.1 - Painted boundaries (1/14)

The sale boundary and Payment Unit boundaries are marked and identified by red paint and a two-track road. Exterior sale boundary lines against state are marked with red paint. The interior Payment Unit boundary is unpainted and identified by the north/south two-track, as shown on the Timber Sale Map.

### 2 - Timber Specifications

#### 2.1 - Included Timber

##### 2.1.3 - Cut tree marked unit(s) (12/08)

Within Payment Unit(s) 1 and 2, all trees are designated for cutting when marked with orange paint above and below stump height, regardless of merchantability. In addition, cut all hardwood, aspen, and oak regardless of merchantability.

### 3 - Payments

#### 3.3 - Pre-measured Sales

##### 3.3.4 - Dividing payment units (7/14)

Payment Unit(s) 1 and 2 may be divided at the request of the Purchaser and upon approval of the Unit Manager. Dividing Payment Units is a contract modification which requires a Timber Sale Contract Supplement. There will be only one division per Payment Unit.

### 4 - Transportation

#### 4.1 - Construction

##### 4.1.12 - No new roads (1/12)

No new roads will be permitted. All operations are limited to existing roads. Skid trails only will be allowed.

#### 4.2 - Maintenance

##### 4.2.5 - Two wheel drive condition (2/04)

All existing trail roads on and adjacent to the sale area must be passable by two-wheel drive traffic for the duration of the sale.

### 5 - Operations

#### 5.1 - Notification

##### 5.1.1 - Pre-sale conference (10/16)

A pre-sale conference on site between the Purchaser and sale administrator is required prior to beginning any operations in a Payment Unit. The Unit Manager or his/her representative must be contacted at least 3 days in advance to schedule the conference.

##### 5.1.4 - Post-sale conference (10/16)

A post-sale conference on site between the Purchaser and sale administrator is required 3 days prior to the completion of active logging operations to determine clean-up and repair of landings, road edges, and the fulfillment of other contract specifications.

#### 5.2 - Conduct of Operations

##### 5.2.2 - Hazard Trees/Snags

###### 5.2.2.1 - Den trees (10/16)

Obvious hollow and/or den trees shall be protected and left standing unless they are a safety hazard.

## **6 - Safety and Fire Prevention**

### **6.2 - Signing**

#### **6.2.1 - Road posting (9/09)**

The Purchaser is responsible for posting and maintaining caution signs on 4 Rd (north of the area shown on the Timber Sale Map) prior to beginning operations. The road must be posted at appropriate distances from the sale area to warn of logging activity and truck traffic. Signs must be removed when harvest operations are suspended or completed. The Purchaser will provide these signs.





# TIMBER SALE MAP

This information provided by authority of Part 525, 1994 PA 451, as amended.

Sale Number	Year
63-001-17-01	17

Forest Management Unit Cadillac	County Wexford	Mapped By Ventimiglia	Date 06/13/17	Page 1	of 1
Township 24N	Range 11W	Section(s) and Subdivision(s) Section 14 Various	Scale 1:15,840		

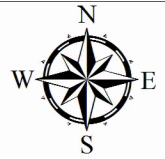
Cover Type				Density	
A = Aspen	H = Hemlock	N = Marsh	U = Upland Brush	0 = Non Stocked	5 = Pole Timber Medium
B = Paper Birch	J = Jack Pine	O = Oak	UM = Upland Mixed	1 = Seedling Sapling Poor	6 = Pole Timber Well
C = Cedar	L = Lowland Brush	P = Lowland Poplar	V = Bog or Marsh	2 = Seedling Sapling Medium	7 = Saw Timber Poor
D = Tread Bog	LM = Lowland Mixed	Q = Mixed Swamp Conifer	W = White Pine	3 = Seedling Sapling Well	8 = Saw Timber Medium
E = Swamp Hdwoods	M = Mpl, Bch, Brch	R = Red Pine	X = Non Stocked	4 = Pole Timber Poor	9 = Saw Timber Well
F = Spruce Fir	MC = Mixed Conifer	S = Black Spruce	Z = Water		
G = Grass	MD = Mixed Deciduous	T = Tamarack			

PU	Acres
1	75.6
2	58.8

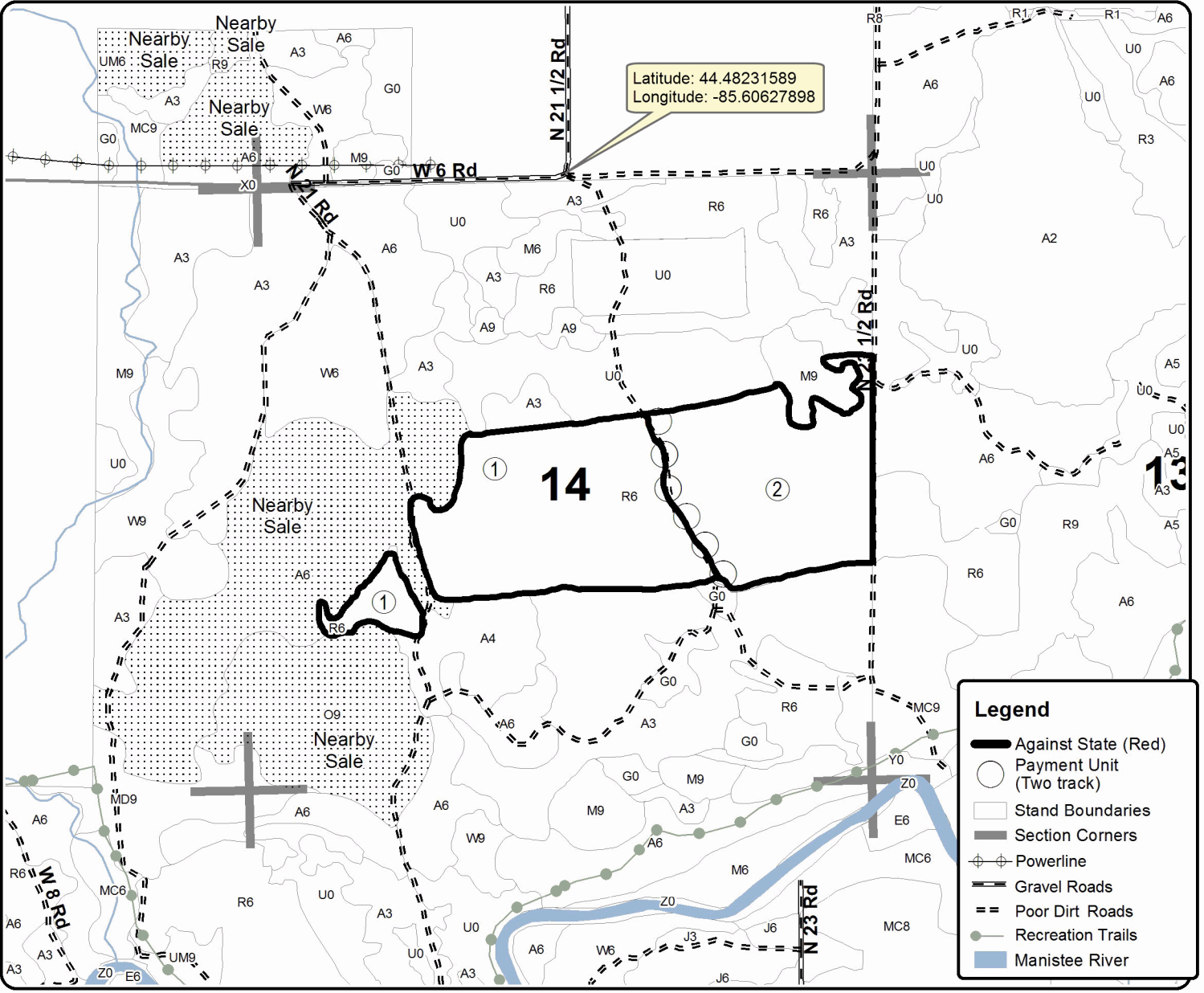
## 131 Red Pine

### Compartment 131

### 134.4 Acres



Latitude: 44.48231589  
Longitude: -85.60627898





# TIMBER SALE INFORMATION

## 139 Pine (63-002-17)

Wexford County (Advertised Price \$93,785.85)

SALE NOTE: A recreation site such as a trail, pathway, or campground is within the sale area or the vicinity. Certain restrictions/specifications may be applicable including time restrictions.

A timber sale contract for this lump sum, sealed bid timber sale will be awarded to the responsible bidder offering the highest sealed bid price. Bids must be at or above the following advertised price for each species:

<u>PRODUCTS &amp; SPECIES</u>	<u>ESTIMATED UNITS*</u>	<u>ADVERTISED PRICE</u>
Sawtimber		
Quaking Aspen	56.60 MBF	\$ 103.00 / MBF
Red Maple	16.00 MBF	\$ 112.00 / MBF
Red Pine	378.20 MBF	\$ 93.00 / MBF
White Pine	16.20 MBF	\$ 65.00 / MBF
Pulpwood		
Mixed Hardwood	60.00 Cords	\$ 18.10 / Cord
Quaking Aspen	249.00 Cords	\$ 14.60 / Cord
Red Maple	123.00 Cords	\$ 18.10 / Cord
Red Pine	1,215.00 Cords	\$ 34.65 / Cord
White Pine	54.00 Cords	\$ 16.50 / Cord

\* The total volume is statistically estimated within plus (+) or minus (-) 9.91 percent. The estimated units are final and not subject to adjustment. Prospective bidders are urged to examine this timber and to make their own estimates of quantity and quality.

### **BOND AND PAYMENT SCHEDULE:**

1. A bond in the amount of \$4,689.00 to insure faithful performance of the conditions of the contract will be deposited by the successful bidder within 21 days of the sale award.
2. Cutting in any sale or unit without the required advance payment would be considered a trespass.
3. Total payment must be paid in advance or according to the following schedule:
  - (a) Ten percent (10%) of the sale value must be paid within 21 days of the sale award.
  - (b) The 10% down payment will be credited towards the first unit cut.
4. If no cutting takes place, the 10% down payment will not be refunded.
5. Operations on the contract issued will terminate on 09/30/2019.

**Description of Timber by Payment Unit (PU)**

PU	MARKET GROUP	PRODUCT	QUANTITY	UNIT	ACRES	ADVERTISE PRICE	
1	Red Maple	Sawtimber	1.5	MBF	12.3	\$8,768.30	
	<i>Red Maple</i>		1.5	<i>MBF</i>			
	Red Pine		36.0	MBF			
	Mixed Hardwood		Pulpwood	7.0			Cords
	<i>Sugar Maple</i>			7.0			<i>Cords</i>
	Red Maple			19.0			Cords
	Red Pine			138.0			Cords
2	Quaking Aspen	Sawtimber	55.2	MBF	65.8	\$27,005.20	
	Red Maple		11.4	MBF			
	<i>Black Cherry</i>		0.5	<i>MBF</i>			
	<i>Red Maple</i>		8.6	<i>MBF</i>			
	<i>Sugar Maple</i>		2.3	<i>MBF</i>			
	Red Pine		43.3	MBF			
	White Pine		15.7	MBF			
	Mixed Hardwood		Pulpwood	53.0			Cords
	<i>Beech</i>			20.0			<i>Cords</i>
	<i>Black Cherry</i>			10.0			<i>Cords</i>
	<i>Sugar Maple</i>			23.0			<i>Cords</i>
	Quaking Aspen			232.0			Cords
	Red Maple			70.0			Cords
	Red Pine			246.0			Cords
	White Pine		52.0	Cords			
3	Quaking Aspen	Sawtimber	1.4	MBF	7.3	\$5,351.00	
	Red Maple		0.5	MBF			
	<i>Red Maple</i>		0.5	<i>MBF</i>			
	Red Pine		16.6	MBF			
	White Pine		0.5	MBF			
	Quaking Aspen		Pulpwood	17.0			Cords
	Red Maple			2.0			Cords
	Red Pine			94.0			Cords
White Pine	2.0	Cords					
4	Red Maple	Sawtimber	1.8	MBF	25.0	\$16,918.95	
	<i>Black Cherry</i>		1.8	<i>MBF</i>			
	Red Pine		115.3	MBF			
	Red Pine		Pulpwood	173.0			Cords
Red Pine	564.0	Cords					
5	Red Maple	Sawtimber	0.8	MBF	47.9	\$35,742.40	
	<i>Red Maple</i>		0.8	<i>MBF</i>			
	Red Pine		167.0	MBF			
	Red Maple		Pulpwood	32.0			Cords
	Red Pine			564.0			Cords
TOTAL:			467.0	MBF			
TOTAL:			1,701.0	Cords			

## Sale Specific Conditions & Requirements

**Sale Name: 139 Pine**

**Sale Number: 63-002-17 Seq#: 1**

### 1 - Sale Area

#### 1.2 - Boundaries

##### 1.2.1 - Painted boundaries (1/14)

The sale boundary is marked in red paint. The painted boundary line trees are not Included Timber and are to be protected unless marked with orange paint.

### 2 - Timber Specifications

#### 2.1 - Included Timber

##### 2.1.3 - Cut tree marked unit(s) (12/08)

Within Payment Unit(s) 1, 2, 4, and 5, all trees are designated for cutting when marked with orange paint above and below stump height, regardless of merchantability. In addition, cut all hardwood and aspen, regardless of merchantability.

##### 2.1.8 - Designated plantation row unit(s) (12/08)

Within Payment Unit(s) 3, all trees which meet minimum piece specifications in 2.2 Utilization, within designated plantation rows are designated for cutting. Designated plantation rows are every third row. Begin with the third row in from the outside of the plantation, then continue every third row. Because of the variability of row direction, it shall be the responsibility of the producer to maintain the third row sequence.

### 3 - Payments

#### 3.3 - Pre-measured Sales

##### 3.3.4 - Dividing payment units (7/14)

Payment Unit(s) 2 may be divided at the request of the Purchaser and upon approval of the Unit Manager. Dividing Payment Units is a contract modification which requires a Timber Sale Contract Supplement. There will be only one division per Payment Unit.

### 4 - Transportation

#### 4.1 - Construction

##### 4.1.12 - No new roads (1/12)

No new roads will be permitted in any Payment Unit. All operations are limited to existing roads. Skid trails only will be allowed.

#### 4.2 - Maintenance

##### 4.2.5 - Two wheel drive condition (2/04)

All existing trail roads on and adjacent to the sale area must be passable by two-wheel drive traffic for the duration of the sale.

### 5 - Operations

#### 5.1 - Notification

##### 5.1.1 - Pre-sale conference (10/16)

A pre-sale conference on site between the Purchaser and sale administrator is required prior to beginning any operations in a Payment Unit to determine landing and road locations. The Unit Manager or his/her representative must be contacted at least 3 days in advance to schedule the conference.

##### 5.1.4 - Post-sale conference (10/16)

A post-sale conference on site between the Purchaser and sale administrator is required 3 days prior to the completion of active logging operations to determine clean-up and repair of landings, road edges, and the fulfillment of other contract specifications.

## 5.2 - Conduct of Operations

### 5.2.20 - Equipment width (2/04)

Equipment used to remove designated rows must be capable of moving through cut rows without damaging residual trees. This applies to Payment Unit 3.

### 5.2.39 - ORV trail/route protection (12/12)

The ORV trail is shown on the Timber Sale Map. Do not cut trees or damage posts with orange ORV markers. All stumps within 5 feet of the trail must be cut flush with the ground. Maintain a 20 foot wide slash, debris, and rut free zone daily using the ORV trail or route as the centerline. Do not run equipment down the ORV trail or route. Skidding across the trail or route may only occur in locations approved by the sale administrator.

## 5.4 - Soil Protection

### 5.4.1 - Rutting restriction, general (7/16)

Operations are to cease immediately if equipment and weather conditions result in rutting of roads and/or skid trails which is 12 inches or greater in depth and 50 feet in length. The Unit Manager or his/her representative may restrict hauling and/or skidding if ruts exceed the specified depth. With the Unit Manager or his/her representative's approval, the Purchaser may return to the area when the risk of rutting has decreased.

## 6 - Safety and Fire Prevention

### 6.2 - Signing

#### 6.2.1 - Road posting (9/09)

The Purchaser is responsible for posting and maintaining caution signs on logging access roads prior to beginning operations. The road must be posted at appropriate distances from the sale area to warn of logging activity and truck traffic. Signs must be removed when harvest operations are suspended or completed. The Purchaser will provide these signs.

#### 6.2.3 - Recreational trail posting (2/10)

The Purchaser is responsible for posting and maintaining caution signs on ORV trails prior to beginning operations. The trail must be posted at appropriate distances from the sale area to warn of logging activity and truck traffic at both ends of the trail. Signs must be removed when harvest operations are suspended or completed. The Purchaser will provide these signs.



# TIMBER SALE MAP

This information provided by authority of Part 525, 1994 PA 451, as amended.

Forest Management Unit Cadillac	County Wexford	Mapped By Ventimiglia	Date 06/14/17	Page 1	of 3
Township 23N	Range 10W	Section(s) and Subdivision(s) Section 14 S1/2 of NE	Cruised By UMLM		
					Scale 1:15,840

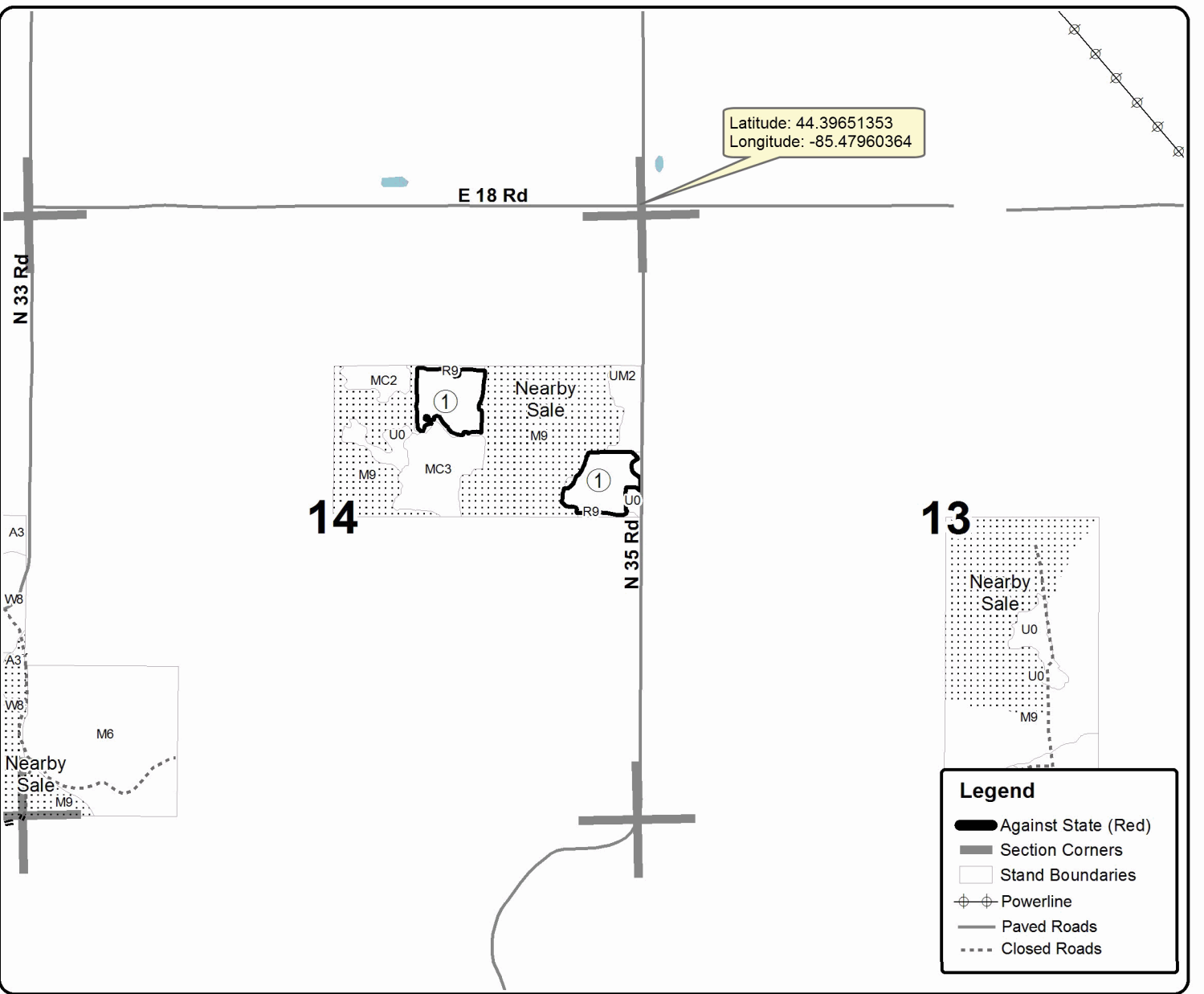
Cover Type				Density	
A = Aspen	H = Hemlock	N = Marsh	U = Upland Brush	0 = Non Stocked	5 = Pole Timber Medium
B = Paper Birch	J = Jack Pine	O = Oak	UM = Upland Mixed	1 = Seedling Sapling Poor	6 = Pole Timber Well
C = Cedar	L = Lowland Brush	P = Lowland Poplar	V = Bog or Marsh	2 = Seedling Sapling Medium	7 = Saw Timber Poor
D = Treed Bog	LM = Lowland Mixed	Q = Mixed Swamp Conifer	W = White Pine	3 = Seedling Sapling Well	8 = Saw Timber Medium
E = Swamp Hdwoods	M = Mpl, Bch, Brch	R = Red Pine	X = Non Stocked	4 = Pole Timber Poor	9 = Saw Timber Well
F = Spruce Fir	MC = Mixed Conifer	S = Black Spruce	Z = Water		
G = Grass	MD = Mixed Deciduous	T = Tamarack			

PU	Acres	PU	Acres
1	12.3	4	25
2	65.8	5	47.9
3	7.3		

**139 Pine**  
**Compartment 139**  
**158.3 Acres**



Latitude: 44.39651353  
Longitude: -85.47960364











Sale Number	Year
63-002-17-01	17

# TIMBER SALE MAP

This information provided by authority of Part 525, 1994 PA 451, as amended.

Forest Management Unit Cadillac		County Wexford	Mapped By Ventimiglia	Date 06/14/17	Page 3	of 3
Township 23N	Range 09W	Section(s) and Subdivision(s) Section 7 W1/2 of SE, SWNE		Scale 1:15,840		

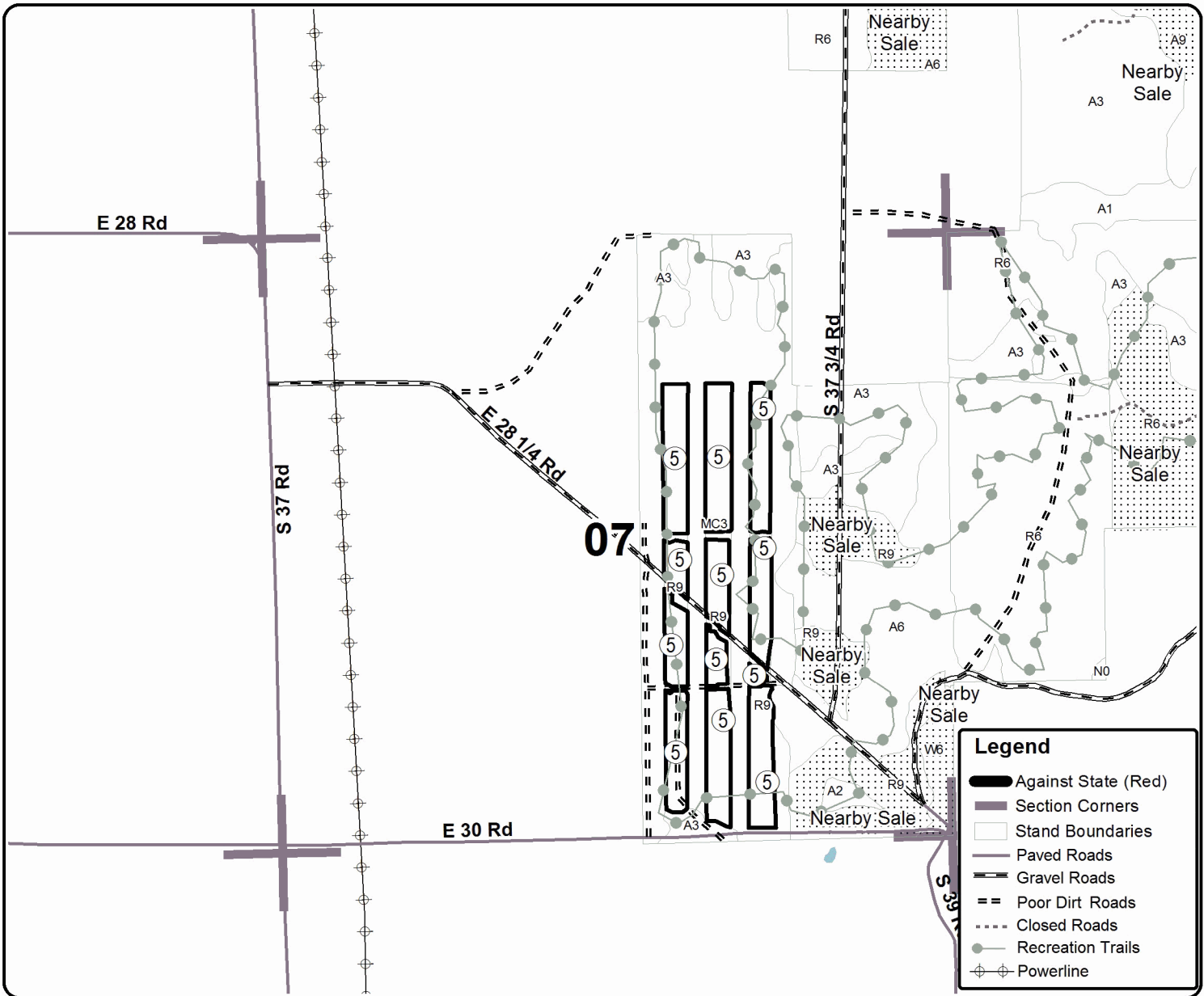
Cover Type				Density	
A = Aspen	H = Hemlock	N = Marsh	U = Upland Brush	0 = Non Stocked	5 = Pole Timber Medium
B = Paper Birch	J = Jack Pine	O = Oak	UM = Upland Mixed	1 = Seedling Sapling Poor	6 = Pole Timber Well
C = Cedar	L = Lowland Brush	P = Lowland Poplar	V = Bog or Marsh	2 = Seedling Sapling Medium	7 = Saw Timber Poor
D = Treed Bog	LM = Lowland Mixed	Q = Mixed Swamp Conifer	W = White Pine	3 = Seedling Sapling Well	8 = Saw Timber Medium
E = Swamp Hdwoods	M = Mpl, Bch, Brch	R = Red Pine	X = Non Stocked	4 = Pole Timber Poor	9 = Saw Timber Well
F = Spruce Fir	MC = Mixed Conifer	S = Black Spruce	Z = Water		
G = Grass	MD = Mixed Deciduous	T = Tamarack			

PU	Acres	PU	Acres
1	12.3	4	25
2	65.8	5	47.9
3	7.3		

## 139 Pine

### Compartment 139

### 158.3 Acres





**TIMBER SALE INFORMATION**

86 Mix (63-010-17)

Missaukee County (Advertised Price \$11,911.90)

A timber sale contract for this lump sum, sealed bid timber sale will be awarded to the responsible bidder offering the highest sealed bid price. Bids must be at or above the following advertised price for each species:

<u>PRODUCTS &amp; SPECIES</u>	<u>ESTIMATED UNITS*</u>		<u>ADVERTISED PRICE</u>
<b>Sawtimber</b>			
B. T. Aspen	7.00	MBF	\$ 60.00 / MBF
Red Maple	1.80	MBF	\$ 66.00 / MBF
Red Oak	40.70	MBF	\$ 123.00 / MBF
Red Pine	6.90	MBF	\$ 54.00 / MBF
White Pine	19.80	MBF	\$ 38.00 / MBF
<b>Pulpwood</b>			
B. T. Aspen	76.00	Cords	\$ 8.50 / Cord
Balsam Fir	30.00	Cords	\$ 6.45 / Cord
Beech	2.00	Cords	\$ 10.55 / Cord
Paper Birch	5.00	Cords	\$ 8.90 / Cord
Red Maple	107.00	Cords	\$ 10.55 / Cord
Red Oak	164.00	Cords	\$ 9.00 / Cord
Red Pine	21.00	Cords	\$ 20.25 / Cord
White Oak	14.00	Cords	\$ 9.00 / Cord
White Pine	123.00	Cords	\$ 9.60 / Cord

\* The total volume is statistically estimated within plus (+) or minus (-) 12.25 percent. The estimated units are final and not subject to adjustment. Prospective bidders are urged to examine this timber and to make their own estimates of quantity and quality.

**BOND AND PAYMENT SCHEDULE:**

1. A bond in the amount of \$596.00 to insure faithful performance of the conditions of the contract will be deposited by the successful bidder within 21 days of the sale award.
2. Cutting in any sale or unit without the required advance payment would be considered a trespass.
3. Total payment must be paid in advance or according to the following schedule:
  - (a) Ten percent (10%) of the sale value must be paid within 21 days of the sale award.
  - (b) The 10% down payment will be credited towards the first unit cut.
4. If no cutting takes place, the 10% down payment will not be refunded.
5. Operations on the contract issued will terminate on 06/30/2019.

**Description of Timber by Payment Unit (PU)**

PU	MARKET GROUP	PRODUCT	QUANTITY	UNIT	ACRES	ADVERTISE PRICE
1	B. T. Aspen	Sawtimber	2.7	MBF	16.9	\$3,748.15
	Red Maple		0.9	MBF		
	Red Oak		11.8	MBF		
	Red Pine		3.6	MBF		
	White Pine		3.6	MBF		
	B. T. Aspen		Pulpwood	16.0		
	Beech	2.0		Cords		
	Red Maple	34.0		Cords		
	Red Oak	52.0		Cords		
	Red Pine	11.0		Cords		
	White Pine	56.0		Cords		
	2	Red Oak	Sawtimber	18.1		
White Pine		7.6		MBF		
Red Maple		Pulpwood	17.0	Cords		
Red Oak			81.0	Cords		
White Oak			14.0	Cords		
White Pine			20.0	Cords		
3	Red Pine	Sawtimber	3.3	MBF	5.4	\$1,047.70
	White Pine		7.8	MBF		
	B. T. Aspen	Pulpwood	3.0	Cords		
	Red Maple		2.0	Cords		
	Red Oak		4.0	Cords		
	Red Pine		10.0	Cords		
	White Pine		30.0	Cords		
4	B. T. Aspen	Sawtimber	4.3	MBF	8.4	\$2,735.50
	Red Oak		10.8	MBF		
	B. T. Aspen	Pulpwood	47.0	Cords		
	Balsam Fir		14.0	Cords		
	Red Maple		34.0	Cords		
	Red Oak		27.0	Cords		
	White Pine		6.0	Cords		
5	Red Maple	Sawtimber	0.9	MBF	4.3	\$639.10
	White Pine		0.8	MBF		
	B. T. Aspen	Pulpwood	10.0	Cords		
	Balsam Fir		16.0	Cords		
	Paper Birch		5.0	Cords		
	Red Maple		20.0	Cords		
	White Pine		11.0	Cords		
TOTAL:			76.2	MBF		
TOTAL:			542.0	Cords		

## Sale Specific Conditions & Requirements

**Sale Name: 86 Mix**

**Sale Number: 63-010-17 Seq#: 2**

### 1 - Sale Area

#### 1.2 - Boundaries

##### 1.2.1 - Painted boundaries (1/14)

The sale boundary is marked and identified by red paint. Exterior sale boundary lines against state are marked with red paint. The painted boundary line trees are not Included Timber and are to be protected.

### 2 - Timber Specifications

#### 2.1 - Included Timber

##### 2.1.1 - Clearcut unit(s) with unmerchantable trees (6/14)

Within Payment Unit(s) 1-5, cut all aspen, maple, beech, and jack pine trees that are two (2) inches or more at DBH. Do not cut any trees marked with green paint. In addition:

Within Payment Unit(s) 1, cut all orange marked red pine and oak; cut all white pine down to a two (2) inch DBH.

Within Payment Unit(s) 2, 3 and 4, cut all oak and pine larger than ten (10) inches DBH.

Within Payment Unit(s) 5, do not cut any oak or cedar.

#### 2.2 - Utilization

##### 2.2.6 - Roundwood operation required (5/07)

The skidding of whole trees or tree segments with limbs attached is prohibited within Payment Unit(s) 1-5. All products must be produced as roundwood and forwarded to existing roads or landing areas in final product length.

### 3 - Payments

#### 3.4 - Damaged Timber

##### 3.4.1 - Damaged timber (6/14)

General Condition and Requirement 3.4 Damaged Timber, defines liquidated damages for undesignated live merchantable trees which are cut or injured. In addition, extreme care should be taken to avoid damage to tree seedlings and saplings.

Within the sale area, if more than 25% of the tree seedlings or saplings (1/4" to 4.5" DBH) within a specified portion of the sale area are damaged, liquidated damages will be assessed at \$300 per acre for all acreage within that specified portion of the sale area that was damaged.

No damage is acceptable to merchantable trees. Within the sale area, if more than 5 % of trees (> 4.5" DBH) within a specified area of the sale are damaged, liquidated damages will be assessed for all trees damaged. Rates will be in accordance with General Condition and Requirement 3.4 Damaged Timber.

### 4 - Transportation

#### 4.1 - Construction

##### 4.1.12 - No new roads (1/12)

No new roads will be permitted in any Payment Unit. All operations are limited to existing roads. Skid trails only will be allowed. A new skid trail will have to be established to access Payment Unit 2.

#### 4.2 - Maintenance

##### 4.2.3 - Road maintenance (8/13)

The following road maintenance is required: Within 30 days of completion of hauling, or if no hauling occurs for 30 days, the road must be maintained and graded. This includes cleaning of drainage areas, grading, crowning and filling with gravel, if

necessary. Damages will be assessed if grading/repair does not occur.

#### 4.2.5 - Two wheel drive condition (2/04)

All existing trail roads on and adjacent to the sale area must be passable by two-wheel drive traffic for the duration of the sale.

## 5 - Operations

### 5.2 - Conduct of Operations

#### 5.2.1 - Slash

##### 5.2.1.8 - Slash height (12/08)

No slash or tree tops may exceed 24 inches in height.

#### 5.2.3 - Operating Restrictions

##### 5.2.3.4 - Oak wilt restriction (4/17)

Within Payment Unit(s) 1-5, unless changed by written agreement, cutting and skidding, are not permitted during the period of April 15 to July 15. Operations may be allowed if specific steps are taken to prevent damaging uncut oak during the high risk period. Those steps include completing all road brushing before April 15th, clearing a tree-length buffer along uncut oak cover before April 15th or leaving an uncut buffer there until after July 15th. This is necessary to reduce the spread of oak wilt. For more information, contact the Unit Manager or his/her representative.

#### 5.2.4 - Dead and Down Creation

##### 5.2.4.5 - Dead and down creation, reptiles and amphibians (2/05)

To encourage reptiles and amphibians, within unit(s) 1-5 leave one, 14 inch DBH or greater full-length tree on the ground, with the top still intact, per 5 acres. These trees shall be evenly scattered through out the unit(s) and identified by blue flagging.

#### 5.2.22 - Operating Caution

##### 5.2.22.1 - Operating caution (6/11)

It is recommended, but not required, that within Payment Unit(s) 1-5, cutting, skidding, and hauling occur during dry summer or frozen winter conditions. The reason for the recommendation is because of wet areas and sensitive soils.

#### 5.2.41 - Snowmobile trail protection (9/11)

The Miss Kal is a snowmobile trail and is shown on the Timber Sale Map. Do not cut or damage posts with orange trail markers or traffic control signs. If the trail is used, it must be maintained and restored to a condition equal to or better than before the sale. The road maintenance/restoration must be done prior to December 1. If the trail is used for hauling, it must be graded to the satisfaction of the Unit Manager or his/her representative prior to December 1st. If the trail road is to be used for hauling during the snowmobile season, then a snow covered base must be left on the trail. The snowmobile trail may only be crossed at right angles. No decking of forest products will be permitted along the snowmobile trail. All stumps within 20 feet of the snowmobile trail must be cut at ground level. In addition, any trees cut within 5 feet of the trail must have the stumps removed and be disposed of according to the direction of the Unit Manager or his/her representative.

### 5.4 - Soil Protection

#### 5.4.1 - Rutting restriction, general (7/16)

Operations are to cease immediately if equipment and weather conditions result in rutting of roads and/or skid trails which is 12 inches or greater in depth and 50 feet in length. The Unit Manager or his/her representative may restrict hauling and/or skidding if ruts exceed the specified depth. With the Unit Manager or his/her representative's approval, the Purchaser may return to the area when the risk of rutting has decreased.

#### 5.4.5 - Soil caution (11/04)

Care must be taken to minimize soil damage due to the wet soils.

## 6 - Safety and Fire Prevention

### 6.2 - Signing

#### 6.2.2 - Snowmobile trail posting (8/09)

The Purchaser is responsible for posting and maintaining caution signs on the Miss Kal snowmobile trail prior to beginning operations during the snowmobile season (approximately December 1 to March 31). The trail must be posted at appropriate distances from the sale area to warn of logging activity and truck traffic. Signs must be removed when harvest operations are suspended or completed. The Purchaser will provide these signs.



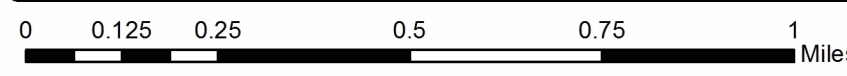
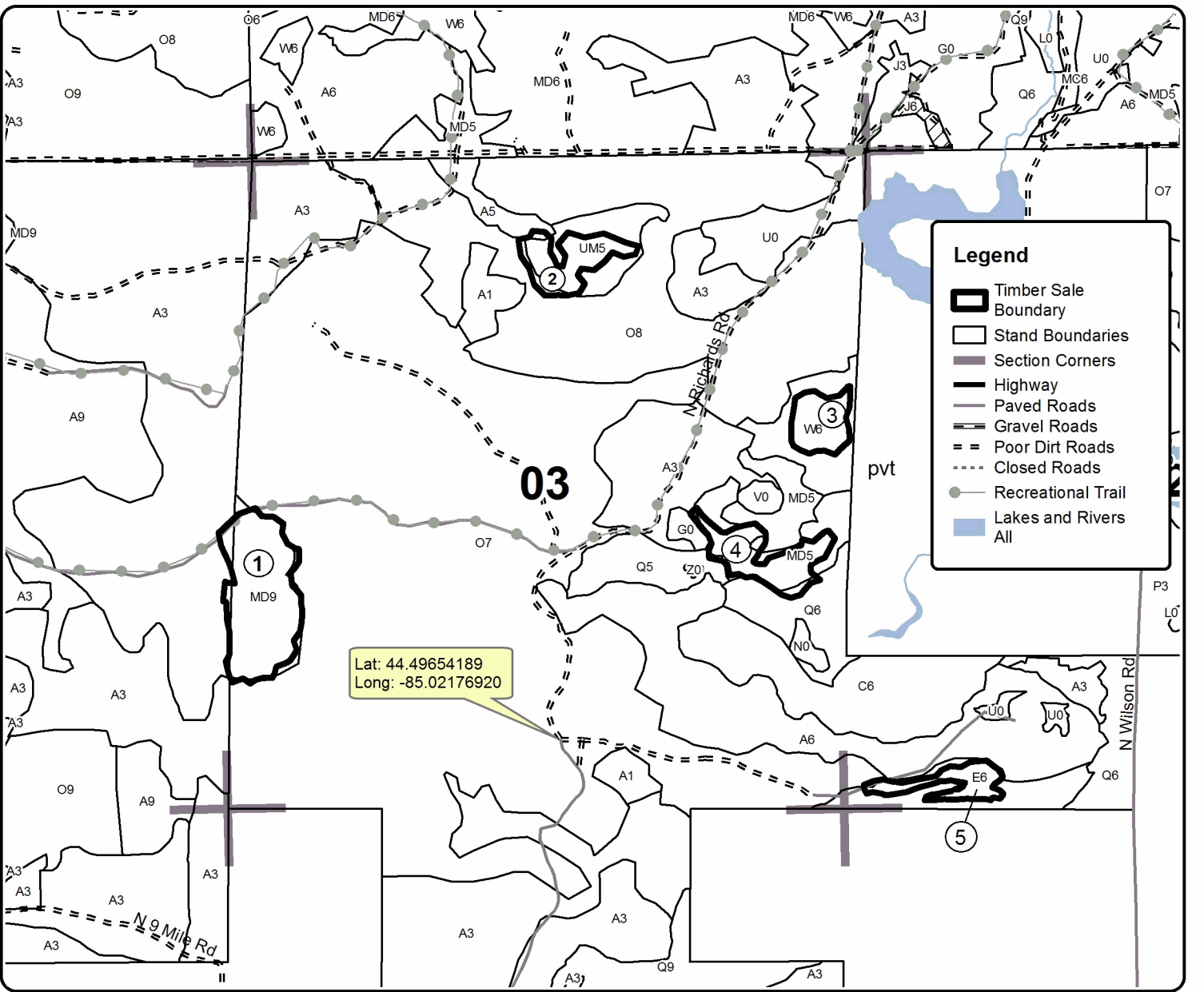
# TIMBER SALE MAP

This information provided by authority of Part 525, 1994 PA 451, as amended.

Forest Management Unit Cadillac		County Missaukee	Mapped By Eisele	Date 03/28/2017	Page 1	of 1
Township T24N	Range R6W	Section(s) and Subdivision(s) 2-SWSW 3-NWSW, NESE, SENE, NWNE		Scale 1:15,840		

Cover Type				Density	
A = Aspen	H = Hemlock	N = Marsh	U = Upland Brush	0 = Non Stocked	5 = Pole Timber Medium
B = Paper Birch	J = Jack Pine	O = Oak	UM = Upland Mixed	1 = Seedling Sapling Poor	6 = Pole Timber Well
C = Cedar	L = Lowland Brush	P = Lowland Poplar	V = Bog or Marsh	2 = Seedling Sapling Medium	7 = Saw Timber Poor
D = Tread Bog	LM = Lowland Mixed	Q = Mixed Swamp Conifer	W = White Pine	3 = Seedling Sapling Well	8 = Saw Timber Medium
E = Swamp Hdwoods	M = Mpl, Bch, Brch	R = Red Pine	X = Non Stocked	4 = Pole Timber Poor	9 = Saw Timber Well
F = Spruce Fir	MC = Mixed Conifer	S = Black Spruce	Z = Water		
G = Grass	MD = Mixed Deciduous	T = Tamarack			

PU	Acres	PU	Acres	<b>86 Mix</b> <b>Compartment 86</b> <b>42 Acres</b>	
1	16.9	4	8.4		
2	7.0	5	4.3		
3	5.4				





131 Pine (63-001-17)  
 ; Wexford COUNTY

In response to the notice of sale to be held 3:00 p.m. (local time) on August 22, 2017, I am hereby submitting my sealed bid (firm offer) for the following forest products to be cut. Bids for individual species must be at or above the advertised price. All non-responsive bid forms may be rejected.

<u>PRODUCTS &amp; SPECIES</u>	<u>ESTIMATED VOLUME*</u>	<u>ADVERTISED PRICE</u>	<u>BID PRICE</u>
<b>Sawtimber</b>			
Basswood	26.00 MBF	\$ 105.00/MBF	\$ _____
Black Cherry	14.20 MBF	\$ 119.00/MBF	\$ _____
Quaking Aspen	32.20 MBF	\$ 120.00/MBF	\$ _____
Red Maple	40.00 MBF	\$ 131.00/MBF	\$ _____
Red Oak	26.00 MBF	\$ 245.00/MBF	\$ _____
Red Pine	424.50 MBF	\$ 108.00/MBF	\$ _____
<b>Pulpwood</b>			
Basswood	110.00 Cords	\$ 16.80/Cord	\$ _____
Black Cherry	76.00 Cords	\$ 21.10/Cord	\$ _____
Quaking Aspen	224.00 Cords	\$ 17.05/Cord	\$ _____
Red Maple	242.00 Cords	\$ 21.10/Cord	\$ _____
Red Oak	104.00 Cords	\$ 18.00/Cord	\$ _____
Red Pine	1,050.00 Cords	\$ 40.45/Cord	\$ _____

\*The volumes are statistically estimated within plus (+) or minus (-) 11.15 percent. These estimated volumes are final and not subject to adjustment. Prospective bidders are urged to examine this timber and to make their own estimates of quantity and quality.

I understand that any or all bids may be rejected. All bids must be signed and all bid items must be bid or the bid form may be rejected. I also understand that consideration and awarding a contract will be based upon my past performance and ability to complete the contract based upon equipment and staffing subject to my control.

FEDERAL ID: \_\_\_\_ - \_\_\_\_ - \_\_\_\_ or SOCIAL SECURITY NUMBER: \_\_\_\_ - \_\_\_\_ - \_\_\_\_  
 Company or individual bidding: \_\_\_\_\_  
 Company representative's name: \_\_\_\_\_  
 Address: \_\_\_\_\_  
 City: \_\_\_\_\_ State: \_\_\_\_\_ Zip: \_\_\_\_\_

IF AVAILABLE, PLEASE PLACE THE PERSONALIZED LABEL FROM YOUR PROSPECTUS IN THE ABOVE BOX.

Individual or company representative's signature: \_\_\_\_\_ Date: \_\_\_\_\_

Phone number : \_\_\_\_\_ Email (optional): \_\_\_\_\_

**THE WINNING BIDDER MUST COMPLETE THE VERIFICATION OF WORKER'S DISABILITY COMPENSATION ACT COMPLIANCE (ON REVERSE SIDE IF DOUBLE SIDED) WITHIN 21 DAYS OF SALE AWARD DATE**



<b>FOR DEPARTMENT USE ONLY</b>
Sale Number (XX - XXX - XX - XX)
Forest Management Unit:

## TIMBER SALE VERIFICATION OF WORKER'S DISABILITY COMPENSATION ACT COMPLIANCE

*As required by Act 317, P.A. 1969 (Worker's Compensation) and  
Part 5 of Act 451 of 1994, as amended.*

### VERIFICATION OF WORKER'S DISABILITY COMPENSATION ACT COMPLIANCE

- This verification must be completed and submitted within 21 days of contract award and prior to the issuance of the timber sale contract.
- In addition, if boxes 2B or 2C are checked, then Notice of Exclusion or Certificate of Insurance must be submitted within twenty-one (21) days of the contract award and prior to the issuance of the timber sale contract.
- All information must be typed or printed except for written signatures.

Please Check Appropriate Categories:

1. My business is organized as (you **must** check one of the boxes below):
  - A.  Sole Proprietorship (individual)
  - B.  Partnership
  - C.  Corporation
  
2. You **must** check one of the boxes below:
  - A.  I certify my business is a sole proprietorship and it has no employees but the sole proprietor. I am not subject to the Worker's Compensation Laws.
  - B.  I certify my business has satisfied its obligation to the Worker's Compensation Act through the use of an approved Notice of Exclusion (BWC-337, Rev. 5/96). I will provide a copy of the Notice of Exclusion within 21 days of the contract award. (For questions or a copy of the BWC-337, please call the Worker's Compensation Bureau at 517-322-1195).
  - C.  I certify my business has a Worker's Compensation Policy. I will provide an original Certificate of Insurance within twenty-one (21) days of the contract award.
  
3. If you have checked item 2(A) or 2(B), you **must** indicate the number of **both** full-time and part-time employees, other than yourself, including family members and active partners (if none, you must enter "0").

\_\_\_\_\_ Full-time Employees

\_\_\_\_\_ Part-time Employees

Name of Business		Federal ID (or) Social Security No.	
Address		Telephone (       )	
City	State	ZIP	

*I hereby certify that the above information is true and correct. I agree to notify the Michigan DNR of any changes that occur in factors affecting my coverage during any of my present and future operations.*

\_\_\_\_\_  
Signature of Owner or Authorized Representative

\_\_\_\_\_  
Title

\_\_\_\_\_  
Date

**Please complete the "SEALED BID" information on the next page**

139 Pine (63-002-17)  
 ; Wexford COUNTY

In response to the notice of sale to be held 3:00 p.m. (local time) on August 22, 2017, I am hereby submitting my sealed bid (firm offer) for the following forest products to be cut. Bids for individual species must be at or above the advertised price. All non-responsive bid forms may be rejected.

<u>PRODUCTS &amp; SPECIES</u>	<u>ESTIMATED VOLUME*</u>	<u>ADVERTISED PRICE</u>	<u>BID PRICE</u>
<b>Sawtimber</b>			
Quaking Aspen	56.60 MBF	\$ 103.00/MBF	\$ _____
Red Maple	16.00 MBF	\$ 112.00/MBF	\$ _____
Red Pine	378.20 MBF	\$ 93.00/MBF	\$ _____
White Pine	16.20 MBF	\$ 65.00/MBF	\$ _____
<b>Pulpwood</b>			
Mixed Hardwood	60.00 Cords	\$ 18.10/Cord	\$ _____
Quaking Aspen	249.00 Cords	\$ 14.60/Cord	\$ _____
Red Maple	123.00 Cords	\$ 18.10/Cord	\$ _____
Red Pine	1,215.00 Cords	\$ 34.65/Cord	\$ _____
White Pine	54.00 Cords	\$ 16.50/Cord	\$ _____

\*The volumes are statistically estimated within plus (+) or minus (-) 9.91 percent. These estimated volumes are final and not subject to adjustment. Prospective bidders are urged to examine this timber and to make their own estimates of quantity and quality.

I understand that any or all bids may be rejected. All bids must be signed and all bid items must be bid or the bid form may be rejected. I also understand that consideration and awarding a contract will be based upon my past performance and ability to complete the contract based upon equipment and staffing subject to my control.

FEDERAL ID: \_\_\_\_ - \_\_\_\_ - \_\_\_\_ or SOCIAL SECURITY NUMBER: \_\_\_\_ - \_\_\_\_ - \_\_\_\_  
 Company or individual bidding: \_\_\_\_\_  
 Company representative's name: \_\_\_\_\_  
 Address: \_\_\_\_\_  
 City: \_\_\_\_\_ State: \_\_\_\_\_ Zip: \_\_\_\_\_

IF AVAILABLE, PLEASE PLACE THE PERSONALIZED LABEL FROM YOUR PROSPECTUS IN THE ABOVE BOX.

Individual or company representative's signature: \_\_\_\_\_ Date: \_\_\_\_\_

Phone number : \_\_\_\_\_ Email (optional): \_\_\_\_\_

**THE WINNING BIDDER MUST COMPLETE THE VERIFICATION OF WORKER'S DISABILITY COMPENSATION ACT COMPLIANCE (ON REVERSE SIDE IF DOUBLE SIDED) WITHIN 21 DAYS OF SALE AWARD DATE**



<b>FOR DEPARTMENT USE ONLY</b>
Sale Number (XX - XXX - XX - XX)
Forest Management Unit:

## TIMBER SALE VERIFICATION OF WORKER'S DISABILITY COMPENSATION ACT COMPLIANCE

*As required by Act 317, P.A. 1969 (Worker's Compensation) and  
Part 5 of Act 451 of 1994, as amended.*

### VERIFICATION OF WORKER'S DISABILITY COMPENSATION ACT COMPLIANCE

- This verification must be completed and submitted within 21 days of contract award and prior to the issuance of the timber sale contract.
- In addition, if boxes 2B or 2C are checked, then Notice of Exclusion or Certificate of Insurance must be submitted within twenty-one (21) days of the contract award and prior to the issuance of the timber sale contract.
- All information must be typed or printed except for written signatures.

Please Check Appropriate Categories:

1. My business is organized as (you **must** check one of the boxes below):
  - A.  Sole Proprietorship (individual)
  - B.  Partnership
  - C.  Corporation
  
2. You **must** check one of the boxes below:
  - A.  I certify my business is a sole proprietorship and it has no employees but the sole proprietor. I am not subject to the Worker's Compensation Laws.
  - B.  I certify my business has satisfied its obligation to the Worker's Compensation Act through the use of an approved Notice of Exclusion (BWC-337, Rev. 5/96). I will provide a copy of the Notice of Exclusion within 21 days of the contract award. (For questions or a copy of the BWC-337, please call the Worker's Compensation Bureau at 517-322-1195).
  - C.  I certify my business has a Worker's Compensation Policy. I will provide an original Certificate of Insurance within twenty-one (21) days of the contract award.
  
3. If you have checked item 2(A) or 2(B), you **must** indicate the number of **both** full-time and part-time employees, other than yourself, including family members and active partners (if none, you must enter "0").

\_\_\_\_\_ Full-time Employees

\_\_\_\_\_ Part-time Employees

Name of Business		Federal ID (or) Social Security No.	
Address		Telephone (       )	
City	State	ZIP	

*I hereby certify that the above information is true and correct. I agree to notify the Michigan DNR of any changes that occur in factors affecting my coverage during any of my present and future operations.*

\_\_\_\_\_  
Signature of Owner or Authorized Representative

\_\_\_\_\_  
Title

\_\_\_\_\_  
Date

**Please complete the "SEALED BID" information on the next page**

86 Mix (63-010-17)  
 ; Missaukee COUNTY

In response to the notice of sale to be held 3:00 p.m. (local time) on August 22, 2017, I am hereby submitting my sealed bid (firm offer) for the following forest products to be cut. Bids for individual species must be at or above the advertised price. All non-responsive bid forms may be rejected.

<u>PRODUCTS &amp; SPECIES</u>	<u>ESTIMATED VOLUME*</u>	<u>ADVERTISED PRICE</u>	<u>BID PRICE</u>
<b>Sawtimber</b>			
B. T. Aspen	7.00 MBF	\$ 60.00/MBF	\$ _____
Red Maple	1.80 MBF	\$ 66.00/MBF	\$ _____
Red Oak	40.70 MBF	\$ 123.00/MBF	\$ _____
Red Pine	6.90 MBF	\$ 54.00/MBF	\$ _____
White Pine	19.80 MBF	\$ 38.00/MBF	\$ _____
<b>Pulpwood</b>			
B. T. Aspen	76.00 Cords	\$ 8.50/Cord	\$ _____
Balsam Fir	30.00 Cords	\$ 6.45/Cord	\$ _____
Beech	2.00 Cords	\$ 10.55/Cord	\$ _____
Paper Birch	5.00 Cords	\$ 8.90/Cord	\$ _____
Red Maple	107.00 Cords	\$ 10.55/Cord	\$ _____
Red Oak	164.00 Cords	\$ 9.00/Cord	\$ _____
Red Pine	21.00 Cords	\$ 20.25/Cord	\$ _____
White Oak	14.00 Cords	\$ 9.00/Cord	\$ _____
White Pine	123.00 Cords	\$ 9.60/Cord	\$ _____

\*The volumes are statistically estimated within plus (+) or minus (-) 12.25 percent. These estimated volumes are final and not subject to adjustment. Prospective bidders are urged to examine this timber and to make their own estimates of quantity and quality.

I understand that any or all bids may be rejected. All bids must be signed and all bid items must be bid or the bid form may be rejected. I also understand that consideration and awarding a contract will be based upon my past performance and ability to complete the contract based upon equipment and staffing subject to my control.

FEDERAL ID: \_\_\_\_ - \_\_\_\_ - \_\_\_\_ or SOCIAL SECURITY NUMBER: \_\_\_\_ - \_\_\_\_ - \_\_\_\_  
 Company or individual bidding: \_\_\_\_\_  
 Company representative's name: \_\_\_\_\_  
 Address: \_\_\_\_\_  
 City: \_\_\_\_\_ State: \_\_\_\_\_ Zip: \_\_\_\_\_

IF AVAILABLE, PLEASE PLACE THE PERSONALIZED LABEL FROM YOUR PROSPECTUS IN THE ABOVE BOX.

Individual or company representative's signature: \_\_\_\_\_ Date: \_\_\_\_\_  
 Phone number : \_\_\_\_\_ Email (optional): \_\_\_\_\_

**THE WINNING BIDDER MUST COMPLETE THE VERIFICATION OF WORKER'S DISABILITY COMPENSATION ACT COMPLIANCE (ON REVERSE SIDE IF DOUBLE SIDED) WITHIN 21 DAYS OF SALE AWARD DATE**



<b>FOR DEPARTMENT USE ONLY</b>
Sale Number (XX - XXX - XX - XX)
Forest Management Unit:

## TIMBER SALE VERIFICATION OF WORKER'S DISABILITY COMPENSATION ACT COMPLIANCE

*As required by Act 317, P.A. 1969 (Worker's Compensation) and  
Part 5 of Act 451 of 1994, as amended.*

### VERIFICATION OF WORKER'S DISABILITY COMPENSATION ACT COMPLIANCE

- This verification must be completed and submitted within 21 days of contract award and prior to the issuance of the timber sale contract.
- In addition, if boxes 2B or 2C are checked, then Notice of Exclusion or Certificate of Insurance must be submitted within twenty-one (21) days of the contract award and prior to the issuance of the timber sale contract.
- All information must be typed or printed except for written signatures.

Please Check Appropriate Categories:

1. My business is organized as (you **must** check one of the boxes below):
  - A.  Sole Proprietorship (individual)
  - B.  Partnership
  - C.  Corporation
2. You **must** check one of the boxes below:
  - A.  I certify my business is a sole proprietorship and it has no employees but the sole proprietor. I am not subject to the Worker's Compensation Laws.
  - B.  I certify my business has satisfied its obligation to the Worker's Compensation Act through the use of an approved Notice of Exclusion (BWC-337, Rev. 5/96). I will provide a copy of the Notice of Exclusion within 21 days of the contract award. (For questions or a copy of the BWC-337, please call the Worker's Compensation Bureau at 517-322-1195).
  - C.  I certify my business has a Worker's Compensation Policy. I will provide an original Certificate of Insurance within twenty-one (21) days of the contract award.
3. If you have checked item 2(A) or 2(B), you **must** indicate the number of **both** full-time and part-time employees, other than yourself, including family members and active partners (if none, you must enter "0").

\_\_\_\_\_ Full-time Employees

\_\_\_\_\_ Part-time Employees

Name of Business		Federal ID (or) Social Security No.	
Address		Telephone (       )	
City	State	ZIP	

*I hereby certify that the above information is true and correct. I agree to notify the Michigan DNR of any changes that occur in factors affecting my coverage during any of my present and future operations.*

\_\_\_\_\_  
Signature of Owner or Authorized Representative

\_\_\_\_\_  
Title

\_\_\_\_\_  
Date

**Please complete the "SEALED BID" information on the next page**