



**DEPARTMENT OF NATURAL RESOURCES  
STATE OF MICHIGAN**

**TIMBER SALE PROSPECTUS #6098**

SCHEDULED SALE DATE AND TIME: 10:00 a.m. (local time) on June 19, 2018.

LOCATION: ATLANTA MGMT UNIT, 13501 M-33, ATLANTA, MI 49709.

PROSPECTUS NOTE: The bidder is advised to inspect the sale area and review the location, estimated volumes, operating costs and contract terms of proposed sales. Please be aware that some landowners may request 60 days or more notice for access across their land.

Notice is hereby given that bids will be received by the Unit Manager, ATLANTA MANAGEMENT UNIT, for certain timber on the following described lands:

Big Wolf Red Pine (54-001-17)

Montmorency County, Advertised Price \$59,768.55, 62.7 Acres, Jack Pine, Red Pine.

Big Wolf Hardwood (54-016-17)

Montmorency County, Advertised Price \$33,722.60, 75.5 Acres, Aspen, Hardwood.

SALE NOTE: A recreation site such as a trail, pathway, or campground is within the sale area or the vicinity. Certain restrictions/specifications may be applicable including time restrictions.

Joy an' Mitigation (54-030-17)

Montmorency County, Advertised Price \$31,894.15, 51.9 Acres, Aspen, Hardwood.

Meridian Line Aspen Oak (54-033-17)

Montmorency County, Advertised Price \$127,068.45, 127.7 Acres, Aspen, Red Oak.

SALE NOTE: Payment Unit 8 may be removed from the sale if a raptor nest is still active when operations begin. See spec 5.8.8 for details.

## BID INSTRUCTIONS (VER. 11/28/2017):

### 1. Scheduled Bid Location, Date, and Time (2/11)

Bids must be received by the Unit Manager, ATLANTA OFFICE, 13501 M-33, ATLANTA, MI 49709, no later than 10:00 a.m. (local time) on June 19, 2018. For further information concerning this sale, contact Cody Stevens at 989-785-4251 extension 5240.

### 2. Bidder's Qualifications (5/16)

Purchaser shall obtain workers compensation insurance to cover claims under Michigan's Worker's Disability Compensation Act of 1969 or similar employee benefit act of any other state applicable to an employee. If all or part of a timber sale was prepared by a private contractor, the contractor and that contractor's company are not permitted to bid on the timber sale contract. Bids will not be accepted from individuals or companies appearing on the DNR/FRD No-Bid List. This list contains the names of purchasers who previously failed to execute a contract within 21-days or who have a history of poor performance.

### 3. Preparation of Sealed Bids (5/16)

Bid Forms may be completed online thru Michigan DNR Timber Sale Online Bidding (OLB) at [www.michigan.gov/timberbidding](http://www.michigan.gov/timberbidding) or by completing the hardcopy Bid Form found in the Timber Sale Prospectus. Hardcopy Bid Forms shall be manually signed in ink. Registration in OLB is considered your 'signature' for all bids submitted thru that system. Bid prices must be entered for each species and product in the Bid Price column for all material subject to bidding and all fill-in blanks must be completed. If erasures or other changes appear on the hardcopy Bid Form, each erasure or change must be initialed by the person signing the bid.

### 4. Submission of Sealed Bids (5/16)

Bid forms may be obtained from the Unit Manager or thru OLB. Bids may be submitted hardcopy or thru OLB. All hardcopy bids must be submitted on the bid form and in an envelope clearly identified as described in this section. NOTE: Only one bid form per bid envelope. Sealed bids must be submitted to the Unit office designated in the prospectus and must be submitted at or prior to the time established in the prospectus. The envelope should show on the outside (a) the sale name or number and (b) the date and time of bid opening, as shown in the prospectus. Bids received after the time specified in the sale prospectus are late bids and will be rejected.

It is possible for a bidder to submit multiple bids on a single sale. For example, a bid may be submitted hardcopy and a bid may be submitted thru OLB. Or, two bidders from the same company could both submit bids on the same sale. If this were to happen, the State would accept all bids received and award the contract accordingly. All bidding and contractual requirements would apply to all bids received.

### 5. Public Opening of Sealed Bids (7/16)

If conditions permit, the sealed bids will be publicly opened and posted at the time and place set in the prospectus.

If a bidder, present at a bid opening, has submitted bids on more than one sale, that bidder may withdraw their unopened bid envelopes or announce the withdrawal of their online bid after being declared the successful bidder on one sale.

### 6. Award of Contract (1/11)

Award of the contract will be made to the Bidder whose bid, conforming to the prospectus, is most advantageous to the State of Michigan on the basis of total value at rates bid for the estimated quantities. The State reserves the right to reject any bid or waive any minor irregularity in bids received. A written award mailed (or otherwise furnished) to the successful Bidder shall be deemed to result in a binding contract without further action by either party.

### 7. Down Payment (1/11)

The Bidder to whom award is made must make a down payment within 21 days of the sale award. The amount of the down payment will be calculated as shown in the Bond and Payment Schedule of this prospectus. Only cash may be used to meet this requirement.

### 8. Performance Security (1/11)

As guarantee of faithful performance, a cash bond, certificate of deposit, surety bond or irrevocable letter of credit (LOC) is required within 21 days of the sale award. The amount of the performance security is shown in the Bond and

Payment Schedule of this prospectus. If an LOC or surety is used, the coverage must extend for at least 6 months beyond the contract expiration.

#### 9. Timber Sale Contract (11/17)

Additional conditions and requirements common to all timber sales are listed on the timber sale contract (R4031) and are available on line at [www.michigan.gov/timber](http://www.michigan.gov/timber). Contact the Unit Manager for additional information or a sample contract. Within 21 days of the date of the award letter, the bidder must sign the contract and provide the required down payment, performance security, and verification of worker's disability compensation. The down payment and performance security shall be in accordance with the provisions of the timber sale contract, in the sums stated in this prospectus. If these actions are not taken, then the Bidder, the Bidder's corporation, and the corporation's principals may not be permitted to bid on State timber sales for a period of 1 year. In addition, the Bidder certifies that if awarded this contract, the Bidder will complete the timber sale contract in accordance with its terms and any modifications thereof including requirements to purchase, cut, and remove the included timber by the expiration date.

Payment Unit values in the State Forest Timber Sale Contract are calculated based on the advertised value of the Payment Unit as a percentage of the total advertised value of the contract. The advertised value of each Payment Unit is given in the Description of Timber by Payment Unit table on the Timber Sale Information page. For example, if the value of Payment Unit 1 is advertised as \$1,500 and the total Timber Sale value is advertised as \$10,000, the contract price for Payment Unit 1 will be 15% of the total bid price ( $\$1,500/\$10,000 * 100$ ).

#### 10. Disclaimer of Estimates and Bidder's Warranty of Inspection (7/16)

Before submitting this bid, the Bidder is advised and cautioned to inspect the sale area, review the requirements of the sale contract, and take other steps as may be reasonably necessary to ascertain the location, estimated volumes, construction estimates, and operating costs of the proposed sale. Failure to do so will not relieve the Bidder from responsibility for completing the contract.

The Bidder warrants that this bid is submitted solely on the basis of the Bidder's examination and inspection of the quality and quantity of the timber offered for sale and the Bidder's opinion of the value thereof and the costs of recovery. No reliance should be placed on the State of Michigan's estimates of timber quality, quantity or costs of recovery. Bidder further acknowledges that the State of Michigan: (i) expressly disclaims any warranty of fitness of timber for any purpose; (ii) offers this timber as is without any warranty of quality (merchantability) or quantity and (iii) expressly disclaims any warranty as to the quantity or quality of timber sold.

#### 11. Certification and Chain-of-Custody (10/14)

Unless otherwise indicated in the contract under section 7 – Other Conditions of the Sale Specific Conditions & Requirements, the area encompassed by this timber sale is certified to the standards of the Forest Stewardship Council (FSC) - Certificate #SCS-FM/COC-00090N and the Sustainable Forestry Initiative (SFI) - Certificate # NSF-SFIS-5Y031-SF5. Forest products from this sale may be delivered to the mill as "FSC 100% and / or SFI certified" as long as the contractor hauling the forest products is chain-of-custody (COC) certified or covered under a COC certificate from the destination mill. The purchaser is responsible for maintaining COC after leaving the sale area.

#### 12. Good Neighbor Authority (GNA) Requirements (7/16)

If the name of this timber sales contains the acronym GNA, it is authorized by the Good Neighbor Authority (GNA) and covered by various agreements between the U.S. Forest Service and the State. The timber sale occurs on federal land and the following conditions apply:

GNA contracts on US Forest Service land will not be awarded to purchasers on the Federal list of excluded parties. The System for Award Management (SAM) will be checked for active excluded parties prior to award of contract. In addition, the Bidder to whom award is made must complete an Assurance Regarding Felony Conviction or Tax Delinquent Status for Corporate Applicants (AD-3031).

#### 13. Good Neighbor Authority (GNA) Requirements, con't (9/16)

Bidder certifies, by signing this bid form, that to the best of Bidder's knowledge that the following representations are accurate and complete.

a. That the Bidder and its principals are not presently debarred, suspended, proposed for debarment, declared ineligible, or voluntary excluded from timber sales (covered transactions) by any Federal department or agency.

b. That the Bidder and its principals have not within a 3-year period preceding this bid been convicted of or had a civil judgment rendered against them for commission of fraud or a criminal offense in connection with obtaining, attempting to obtain, or performing a public (Federal, State, or local) transaction or contract under a public transaction; violation of Federal or State antitrust statutes or commission of embezzlement, theft, forgery, bribery, falsification or destruction of records, making false statements, or receiving stolen property.

c. That the Bidder and its principals are not presently indicted for or otherwise criminally or civilly charged by a governmental entity (Federal, State, or local) with commission of any of the offenses enumerated in paragraph b of this certification.

d. That the Bidder and its principals have not within a 3-year period preceding this bid had one or more public transactions (Federal, State, or local) terminated for breach or default of a timber or forest product contract.

Bidders that cannot certify this requirement, in whole or in part, shall submit an explanation with their bid.

KEITH CREAGH

Director

**TIMBER SALE INFORMATION**

Big Wolf Red Pine (54-001-17)

Montmorency County (Advertised Price \$59,768.55)

A timber sale contract for this lump sum, sealed bid timber sale will be awarded to the responsible bidder offering the highest sealed bid price. Bids must be at or above the following advertised price for each species:

<u>PRODUCTS &amp; SPECIES</u>	<u>ESTIMATED UNITS*</u>	<u>ADVERTISED PRICE</u>
Sawtimber		
Red Pine	160.10 MBF	\$ 119.00 / MBF
Pulpwood		
Jack Pine	19.00 Cords	\$ 23.25 / Cord
Red Pine	827.00 Cords	\$ 48.70 / Cord

\* The total volume is statistically estimated within plus (+) or minus (-) 12.36 percent. The estimated units are final and not subject to adjustment. Prospective bidders are urged to examine this timber and to make their own estimates of quantity and quality.

**BOND AND PAYMENT SCHEDULE:**

1. A bond in the amount of \$2,988.00 to insure faithful performance of the conditions of the contract will be deposited by the successful bidder within 21 days of the sale award.
2. Cutting in any sale or unit without the required advance payment would be considered a trespass.
3. Total payment must be paid in advance or according to the following schedule:
  - (a) Ten percent (10%) of the sale value must be paid within 21 days of the sale award.
  - (b) The 10% down payment will be credited towards the first unit cut.
  - (c) Payment for each of the following units must be made before cutting begins in that unit:
 

<u>PAYMENT UNIT NUMBER</u>	<u>PERCENT OF TOTAL SALE VALUE</u>
01	12.0%
02	32.3%
03	17.3%
04	12.3%
05	12.6%
06	13.5%
4. If no cutting takes place, the 10% down payment will not be refunded.
5. Operations on the contract issued will terminate on 12/31/2020.

**Description of Timber by Payment Unit (PU)**

PU	MARKET GROUP	PRODUCT	QUANTITY	UNIT	ACRES	ADVERTISE PRICE
1	Red Pine	Sawtimber	30.9	MBF	9.1	\$7,197.95
	Jack Pine	Pulpwood	9.0	Cords		
	<i>Jack Pine</i>	<i>Sawtimber</i>	<i>0.4</i>	<i>MBF</i>		
	<i>Jack Pine</i>	<i>Pulpwood</i>	<i>8.0</i>	<i>Cords</i>		
	Red Pine		68.0	Cords		
2	Red Pine	Sawtimber	61.5	MBF	14.5	\$19,298.70
	Red Pine	Pulpwood	246.0	Cords		
3	Red Pine	Sawtimber	18.2	MBF	12.1	\$10,366.25
	Jack Pine	Pulpwood	5.0	Cords		
	<i>Jack Pine</i>		<i>5.0</i>	<i>Cords</i>		
	Red Pine		166.0	Cords		
4	Red Pine	Sawtimber	17.3	MBF	9.4	\$7,337.15
	Jack Pine	Pulpwood	5.0	Cords		
	<i>Jack Pine</i>		<i>5.0</i>	<i>Cords</i>		
	Red Pine		106.0	Cords		
5	Red Pine	Sawtimber	16.8	MBF	8.6	\$7,502.30
	Red Pine	Pulpwood	113.0	Cords		
6	Red Pine	Sawtimber	15.4	MBF	9.0	\$8,066.20
	Red Pine	Pulpwood	128.0	Cords		
TOTAL:			160.1	MBF		
TOTAL:			846.0	Cords		

# Sale Specific Conditions & Requirements

**Sale Name: Big Wolf Red Pine**

**Sale Number: 54-001-17 Seq#: 1**

## 1 - Sale Area

### 1.2 - Boundaries

#### 1.2.1 - Painted boundaries (1/14)

The sale boundaries are marked and identified by red paint, along with county roads and a type change. Exterior sale boundary lines against state are marked with red paint, with the following exceptions: The north boundaries of Payment Units 3, 5 and 6 are unpainted and identified by Big Wolf Lake Road. The west boundary of Payment Unit 3 is unpainted and identified by Town Line Road. The north boundary of Payment Unit 4 is unpainted and identified by the R9/U0 type change. The painted boundary line trees are not Included Timber and are to be protected unless marked with orange paint.

## 2 - Timber Specifications

### 2.1 - Included Timber

#### 2.1.3 - Cut tree marked unit(s) (12/08)

Within Payment Unit(s) 2-6, all trees are designated for cutting when marked with orange paint above and below stump height, regardless of merchantability.

#### 2.1.8 - Designated plantation row unit(s) (12/08)

Within Payment Unit(s) 1, all trees which meet minimum piece specifications in 2.2 Utilization, within designated plantation rows are designated for cutting. Designated plantation rows are every third row. Begin with the third row in from the outside of the plantation, then continue every third row. Due to the variability of row direction, it shall be the responsibility of the producer to maintain the third row sequence.

### 2.2 - Utilization

#### 2.2.4 - Skidding length (2/14)

Skidding of unlimbed tops is not permissible unless approved by the Unit Manager or his/her representative. Skidding of lengths over 17 feet is permissible as long as the timber sale administrator approves the method and machinery used. If at any point damage exceeds specification 3.4.1, all of the remaining wood must be skid in lengths less than 17 feet.

## 3 - Payments

### 3.4 - Damaged Timber

#### 3.4.1 - Damaged timber (6/14)

General Condition and Requirement 3.4 Damaged Timber, defines liquidated damages for undesignated live merchantable trees which are cut or injured. No damage is acceptable to merchantable trees. Within the sale area, if more than 5% of trees (> 4.5" DBH) within a specified area of the sale are damaged, liquidated damages will be assessed for all trees damaged. Rates will be in accordance with General Condition and Requirement 3.4 Damaged Timber.

## 4 - Transportation

### 4.1 - Construction

#### 4.1.12 - No new roads (1/12)

No new roads will be permitted in any Payment Unit. All operations are limited to existing roads. Skid trails only will be allowed.

### 4.2 - Maintenance

#### 4.2.5 - Two wheel drive condition (2/04)

All existing trail roads on and adjacent to the sale area must be passable by two-wheel drive traffic for the duration of the sale.

## 5 - Operations

## 5.1 - Notification

### 5.1.1 - Pre-sale conference (10/16)

A pre-sale conference on site between the Purchaser and sale administrator is required prior to beginning any operations to determine landing locations. The Unit Manager or his/her representative must be contacted at least 10 days in advance to schedule the conference.

### 5.1.3 - Well heads and natural gas pipelines (11/15)

The Purchaser is responsible for contacting the gas or pipeline company 30 days prior to operating equipment in the vicinity of well heads or natural gas pipelines.

### 5.1.4 - Post-sale conference (10/16)

A post-sale conference on site between the Purchaser and sale administrator is required 5 days prior to the completion of active logging operations to determine clean-up and repair of landings, road edges, and the fulfillment of other contract specifications.

## 5.2 - Conduct of Operations

### 5.2.1 - Slash

#### 5.2.1.1 - Slash within sale area (9/16)

No trees are to be felled outside the sale area and all slash is to be kept at least 10 feet back from the red paint line. If sale boundary lines are along a public road or highway, then slash must be removed 50' from these lines per General Condition & Requirement 5.2.1.

#### 5.2.1.10 - No slash in openings (5/10)

No brush or logging debris is to be left in the maintained wildlife opening which is indicated by G0 on the Timber Sale Map. Any damage to the opening shall be repaired according to specifications of the Unit Manager or his/her representative.

### 5.2.2 - Hazard Trees/Snags

#### 5.2.2.1 - Den trees (10/16)

Obvious hollow and/or den trees shall be protected and left standing unless they are a safety hazard.

### 5.2.3 - Operating Restrictions

#### 5.2.3.3 - Bark slippage restriction (3/09)

Within Payment Unit(s) 1-6, unless changed by written agreement, cutting and skidding are not permitted during the period of April 15 to July 15. This restriction is because of bark slippage.

#### 5.2.3.6 - Bark beetle restriction (12/08)

In the event drought creates a high risk of pine bark beetle infestation, pine is not to be cut during the period March 1 through July 1, unless all portions of trees greater than two inches in diameter are removed from the sale area, reduced to chips, or treated to the satisfaction of the Unit Manager or his/her representative, within fifteen days of being severed from the stump. Pine log decks, pulpwood piles and treetops that are piled for chipping in the fall or winter within a 1/4 mile of susceptible sites must be removed before March 15. Residual slash must not be placed in piles or rows and must be spread over the site for quick drying. The Department of Natural Resources will exercise this specification if the risk of damage warrants.

### 5.2.20 - Equipment width (2/04)

Equipment used to remove designated rows must be capable of moving through cut rows without damaging residual trees.

### 5.2.32 - Decking/landing restoration (9/13)

All decking and landing areas must have the surface area restored to a condition equal to or better than before. This is to ensure the proper regeneration of the stand. Wood debris, chips and "cookies" from trimmings must be removed or scattered away from landing and loading areas and may not be windrowed on the edge.

### 5.2.33 - Gas well re-vegetation (12/08)

In the event that the gas well is utilized for a landing, the site must be re-vegetated with a seeding mixture specified by the Unit Manager or his/her representative.



5.2.38 - No decking against live trees (2/04)

Cut products may not be decked against unmarked or designated leave trees.

5.4 - Soil Protection

5.4.1 - Rutting restriction, general (7/16)

Operations are to cease immediately if equipment and weather conditions result in rutting of roads and/or skid trails which is 12 inches or greater in depth and 50 feet in length. The Unit Manager or his/her representative may restrict hauling and/or skidding if ruts exceed the specified depth. With the Unit Manager or his/her representative's approval, the Purchaser may return to the area when the risk of rutting has decreased.

5.8 - Protection of Endangered Species

5.8.5 - Protection of raptor nests (3/13)

All trees with raptor nests will be protected if found during harvesting operations. Notification will be made to the Unit Manager or his/her representative who will notify the Wildlife Biologist so an on-site evaluation and recommendation can be made, if necessary.



## TIMBER SALE INFORMATION

### Big Wolf Hardwood (54-016-17)

Montmorency County (Advertised Price \$33,722.60)

SALE NOTE: A recreation site such as a trail, pathway, or campground is within the sale area or the vicinity. Certain restrictions/specifications may be applicable including time restrictions.

A timber sale contract for this lump sum, sealed bid timber sale will be awarded to the responsible bidder offering the highest sealed bid price. Bids must be at or above the following advertised price for each species:

<u>PRODUCTS &amp; SPECIES</u>	<u>ESTIMATED UNITS*</u>		<u>ADVERTISED PRICE</u>
Sawtimber			
B. T. Aspen	15.20	MBF	\$ 89.00 / MBF
Jack Pine	14.40	MBF	\$ 47.00 / MBF
Mixed Oak	74.20	MBF	\$ 106.00 / MBF
Red Maple	4.00	MBF	\$ 138.00 / MBF
Red Pine	5.40	MBF	\$ 119.00 / MBF
Pulpwood			
Balsam Fir	2.00	Cords	\$ 32.10 / Cord
Jack Pine	159.00	Cords	\$ 23.25 / Cord
Mixed Aspen	258.00	Cords	\$ 24.75 / Cord
Mixed Hardwood	147.00	Cords	\$ 19.80 / Cord
Mixed Oak	430.00	Cords	\$ 21.35 / Cord
Red Pine	7.00	Cords	\$ 48.70 / Cord
White Pine	1.00	Cords	\$ 54.75 / Cord

\* The total volume is statistically estimated within plus (+) or minus (-) 16.22 percent. The estimated units are final and not subject to adjustment. Prospective bidders are urged to examine this timber and to make their own estimates of quantity and quality.

#### **BOND AND PAYMENT SCHEDULE:**

1. A bond in the amount of \$1,686.00 to insure faithful performance of the conditions of the contract will be deposited by the successful bidder within 21 days of the sale award.
2. Cutting in any sale or unit without the required advance payment would be considered a trespass.
3. Total payment must be paid in advance or according to the following schedule:
  - (a) Ten percent (10%) of the sale value must be paid within 21 days of the sale award.
  - (b) The 10% down payment will be credited towards the first unit cut.
  - (c) Payment for each of the following units must be made before cutting begins in that unit:
 

PAYMENT UNIT NUMBER	PERCENT OF TOTAL SALE VALUE
01	29.5%
02	22.2%
03	34.5%
04	9.2%
05	4.6%
4. If no cutting takes place, the 10% down payment will not be refunded.
5. Operations on the contract issued will terminate on 06/30/2021.

**Description of Timber by Payment Unit (PU)**

PU	MARKET GROUP	PRODUCT	QUANTITY	UNIT	ACRES	ADVERTISE PRICE	
1	Jack Pine	Sawtimber	13.3	MBF	34.7	\$9,944.25	
	Mixed Oak		12.3	MBF			
	<i>Northern Pin Oak</i>		12.3	<i>MBF</i>			
	Red Pine		3.2	MBF			
	Balsam Fir		Pulpwood	2.0			Cords
	Jack Pine			155.0			Cords
	Mixed Aspen			54.0			Cords
	<i>B. T. Aspen</i>			14.0			<i>Cords</i>
	<i>Quaking Aspen</i>			40.0			<i>Cords</i>
	Mixed Hardwood			3.0			Cords
	<i>Black Cherry</i>			3.0			<i>Cords</i>
	Mixed Oak			111.0			Cords
	<i>Northern Pin Oak</i>			111.0			<i>Cords</i>
	Red Pine			3.0			Cords
	White Pine		1.0	Cords			
	2		B. T. Aspen	Sawtimber			0.7
<i>B. T. Aspen</i>		0.7	<i>MBF</i>				
Mixed Oak		23.3	MBF				
<i>BI/R/Hybrid Oak</i>		23.3	<i>MBF</i>				
Red Maple		0.4	MBF				
Red Pine		1.1	MBF				
Mixed Aspen		Pulpwood	72.0		Cords		
<i>B. T. Aspen</i>			72.0		<i>Cords</i>		
Mixed Hardwood			37.0		Cords		
<i>Red Maple</i>			37.0		<i>Cords</i>		
Mixed Oak			101.0		Cords		
<i>BI/R/Hybrid Oak</i>			101.0		<i>Cords</i>		
Red Pine	2.0	Cords					
3	B. T. Aspen	Sawtimber	14.2	MBF	17.4	\$11,642.10	
	<i>B. T. Aspen</i>		13.8	<i>MBF</i>			
	<i>Quaking Aspen</i>		0.4	<i>MBF</i>			
	Mixed Oak		27.8	MBF			
	<i>BI/R/Hybrid Oak</i>		6.2	<i>MBF</i>			
	<i>Northern Pin Oak</i>		12.9	<i>MBF</i>			
	<i>Red Oak</i>		7.5	<i>MBF</i>			
	<i>White Oak</i>		1.2	<i>MBF</i>			
	Red Maple		3.6	MBF			
	Mixed Aspen		Pulpwood	100.0			Cords
	<i>B. T. Aspen</i>			94.0			<i>Cords</i>
	<i>Quaking Aspen</i>			6.0			<i>Cords</i>
	Mixed Hardwood			98.0			Cords
	<i>Red Maple</i>			98.0			<i>Cords</i>
	Mixed Oak			118.0			Cords
	<i>BI/R/Hybrid Oak</i>			23.0			<i>Cords</i>
	<i>Northern Pin Oak</i>			84.0			<i>Cords</i>
	<i>Red Oak</i>			8.0			<i>Cords</i>
<i>White Oak</i>	3.0	<i>Cords</i>					
4	B. T. Aspen	Sawtimber	0.3	MBF	9.5	\$3,089.70	
	<i>B. T. Aspen</i>		0.3	<i>MBF</i>			
	Mixed Oak		6.9	MBF			
	<i>White Oak</i>		6.9	<i>MBF</i>			
	Red Pine		1.1	MBF			
	Mixed Aspen		Pulpwood	32.0			Cords
	<i>B. T. Aspen</i>			31.0			<i>Cords</i>
	<i>Quaking Aspen</i>			1.0			<i>Cords</i>
Mixed Hardwood	8.0	Cords					

**Description of Timber by Payment Unit (PU), con't**

PU	MARKET GROUP	PRODUCT	QUANTITY	UNIT	ACRES	ADVERTISE PRICE
4 con't	<i>Red Maple</i>	<i>Pulpwood</i>	8.0	<i>Cords</i>		
	Mixed Oak		54.0	Cords		
	<i>Northern Pin Oak</i>		13.0	<i>Cords</i>		
	<i>White Oak</i>		41.0	<i>Cords</i>		
	Red Pine		2.0	Cords		
5	Jack Pine	Sawtimber	1.1	MBF	5.9	\$1,560.00
	Mixed Oak		3.9	MBF		
	<i>Northern Pin Oak</i>		3.9	<i>MBF</i>		
	Jack Pine	Pulpwood	4.0	Cords		
	Mixed Hardwood		1.0	Cords		
	<i>Red Maple</i>		1.0	<i>Cords</i>		
	Mixed Oak		46.0	Cords		
	<i>Northern Pin Oak</i>		40.0	<i>Cords</i>		
	<i>White Oak</i>		6.0	<i>Cords</i>		
	TOTAL:			113.2		
TOTAL:			1,004.0	Cords		

# Sale Specific Conditions & Requirements

**Sale Name: Big Wolf Hardwood**

**Sale Number: 54-016-17 Seq#: 1**

## 1 - Sale Area

### 1.2 - Boundaries

#### 1.2.1 - Painted boundaries (1/14)

The sale boundary and Payment Unit boundaries are marked and identified by blue, red, green, and yellow paint. Exterior sale boundary lines against private property are marked with blue paint. Exterior sale boundary lines against state are marked with red paint. The special protection area is marked with green paint. Interior Payment Unit boundaries are marked with yellow paint. The painted boundary line trees are not Included Timber and are to be protected, except red painted boundary trees along county roads, which are Included Timber unless marked with multiple red marks above stump height. Yellow painted trees designating an interior Payment Unit boundary are only to be cut when all surrounding Payment Units have been paid.

## 2 - Timber Specifications

### 2.1 - Included Timber

#### 2.1.1 - Clearcut unit(s) with unmerchantable trees (6/14)

Within Payment Unit(s) 1 - 5, cut all trees that are two (2) inches or more at DBH. In addition, within Payment Unit 2, special protection trees identified in accordance with condition 3.4.2, within clearcutting unit boundaries, are not Included Timber and are to be protected.

#### 2.1.11 - Description of timber note (2/04)

Note that Mixed Aspen pulpwood includes bigtooth and quaking aspen, Mixed Hardwood pulpwood includes black cherry and red maple, and Mixed Oak pulpwood includes black/red/hybrid oak, northern pin oak, red oak, and white oak.

### 2.2 - Utilization

#### 2.2.4 - Skidding length (2/14)

Skidding of unlimbed tops or lengths over 17 feet is not permissible unless approved by the Unit Manager or his/her representative. If at any point damage exceeds specification 3.4.1, 3.4.2, or 5.4.1, all of the remaining wood must be skidded in lengths less than 17 feet.

## 3 - Payments

### 3.4 - Damaged Timber

#### 3.4.1 - Damaged timber (6/14)

General Condition and Requirement 3.4 Damaged Timber, defines liquidated damages for undesignated live merchantable trees which are cut or injured. No damage is acceptable to merchantable trees. Within the sale area, if more than 5% of trees (> 4.5" DBH) within a specified area of the sale are damaged, liquidated damages will be assessed for all trees damaged. Rates will be in accordance with General Condition and Requirement 3.4 Damaged Timber.

#### 3.4.2 - Special Protection Trees (4/14)

The Purchaser shall not cut live or dead special protection trees within cutting units or clearings. Special protection trees are marked with green paint. If the Purchaser's operations have cut or damaged special protection trees through carelessness, the Purchaser shall pay \$150 as fixed, agreed and liquidated damages for each special protection tree cut or damaged. Such payment does not constitute ownership of the undesignated timber.

#### 3.4.3 - Special Protection Areas (8/11)

The Purchaser shall protect special protection areas from damage by the Purchaser's operations. Special protection areas are located within northeastern portion of Payment Unit 5, and are marked with a green boundary line or excluded with red boundary line. The Purchaser shall not cut live or dead trees within, operate within, or fall trees into special protection areas. If the Purchaser's operations have cut or damaged special protection areas through carelessness, the Purchaser shall pay \$1,000 as fixed, agreed and liquidated damages for each acre or part thereof cut or damaged. Such payment does not constitute ownership of the undesignated timber.

## 4 - Transportation

## 4.1 - Construction

### 4.1.3 - Slash and earthen piles (8/04)

Piles or windrows of earth along roads and landings that have been widened or constructed shall be leveled. Slash from road maintenance or construction, including stumps, shall be dispersed throughout the sale.

### 4.1.12 - No new roads (1/12)

No new roads will be permitted. All operations are limited to existing roads. Skid trails only will be allowed.

## 4.2 - Maintenance

### 4.2.5 - Two wheel drive condition (2/04)

All existing trail roads on and adjacent to the sale area must be passable by two-wheel drive traffic for the duration of the sale.

## 5 - Operations

### 5.1 - Notification

#### 5.1.1 - Pre-sale conference (10/16)

A pre-sale conference between the Purchaser and sale administrator is required prior to beginning any operations to determine landing and road locations.

#### 5.1.3 - Well heads and natural gas pipelines (11/15)

The Purchaser is responsible for contacting the gas or pipeline company 30 days prior to operating equipment in the vicinity of well heads or natural gas pipelines. Contact Riverside Energy Michigan, LLC at 231-995-4000 (Traverse City Office) or at 989-705-7665 (Emergency).

#### 5.1.4 - Post-sale conference (10/16)

A post-sale conference on site between the Purchaser and sale administrator is required prior to the completion of active logging operations to determine clean-up and repair of landings, road edges, and the fulfillment of other contract specifications.

### 5.2 - Conduct of Operations

#### 5.2.2 - Hazard Trees/Snags

##### 5.2.2.1 - Den trees (10/16)

Obvious hollow and/or den trees shall be protected and left standing unless they are a safety hazard.

#### 5.2.3 - Operating Restrictions

##### 5.2.3.4 - Oak wilt restriction (4/17)

Within Payment Unit(s) 1 - 5, unless changed by written agreement, cutting, skidding, and hauling are not permitted during the period of April 15 to July 15. Operations may be allowed if specific steps are taken to prevent damaging uncut oak during the high risk period. Those steps include completing all road brushing before April 15th, clearing a tree-length buffer along uncut oak cover before April 15th or leaving an uncut buffer there until after July 15th. If special protection trees, including painted boundary trees, are injured after April 15th, the wound must be covered with spray paint immediately to prevent infection. This is necessary to reduce the spread of oak wilt. For more information, contact the Unit Manager or his/her representative.

##### 5.2.3.6 - Bark beetle restriction (12/08)

In the event drought creates a high risk of pine bark beetle infestation, pine is not to be cut during the period March 1 through July 1, unless all portions of trees greater than two inches in diameter are removed from the sale area, reduced to chips, or treated to the satisfaction of the Unit Manager or his/her representative, within fifteen days of being severed from the stump. Pine log decks, pulpwood piles and treetops that are piled for chipping in the fall or winter within a 1/4 mile of susceptible sites must be removed before March 15. Residual slash must not be placed in piles or rows and must be spread over the site for quick drying. The Department of Natural Resources will exercise this specification if the risk of damage warrants.

##### 5.2.3.11 - Coppice regeneration protection (4/10)

Timber harvesting in any Payment Unit must be completed before significant deciduous sprouting occurs in that Payment

Unit so as to minimize damage to the new regeneration. Any post harvest operations, such as chipping, forwarding, or skidding, must be completed before sprouting of regeneration occurs. If it is anticipated that these activities will be delayed, then tops, roundwood or stems shall be carried to one central location or left in the harvest area. If operations damage sprouting regeneration, the damaged stems shall be sheared to ground level. The Unit Manager or his/her representative may cease harvest activity if sprouting occurs before the operation is complete.

#### 5.2.4 - Dead and Down Creation

##### 5.2.4.4 - Dead and down creation, grouse (8/13)

To encourage grouse and other wildlife, in Payment Unit(s) 2 and 3, leave one, 10" diameter or larger log-length piece on the ground for every 2 acres. This can be an unmerchantable piece or a full tree.

##### 5.2.32 - Decking/landing restoration (9/13)

All decking and landing areas must have the surface area restored to a condition equal to or better than before. This is to ensure the proper regeneration of the stand. Wood debris, chips and "cookies" from trimmings must be removed or scattered away from landing and loading areas and may not be windrowed on the edge. Once harvest operations are complete within the Payment Unit, all decked wood must be hauled from the landing within 60 days and the landing restored immediately thereafter. Where the landing is used for multiple Payment Units, all decked wood must be hauled from the landing within 60 days of completion of the final unit using the landing and the landing restored immediately thereafter.

##### 5.2.38 - No decking against live trees (2/04)

Cut products may not be decked against unmarked or designated leave trees.

##### 5.2.39 - ORV trail/route protection (12/12)

The Hunt Creek Motorcycle Trail is an ORV trail or route shown on the Timber Sale Map. Do not cut trees or damage posts with orange ORV markers. All stumps within 5 feet of the trail must be cut flush with the ground. Maintain a 20 foot wide slash, debris, and rut free zone daily using the ORV trail or route as the centerline. Do not run equipment down the ORV trail or route. Skidding across the trail or route may only occur in locations approved by the sale administrator.

#### 5.4 - Soil Protection

##### 5.4.1 - Rutting restriction, general (7/16)

Operations are to cease immediately if equipment and weather conditions result in rutting of roads and/or skid trails which is 12 inches or greater in depth and 50 feet in length. Additionally, skidding operations shall not result in translocation of soil. The Unit Manager or his/her representative may restrict hauling and/or skidding if ruts exceed the specified depth. With the Unit Manager or his/her representative's approval, the Purchaser may return to the area when the risk of rutting has decreased.

##### 5.4.2 - Skid trails (2/04)

Skid trails up and down slopes should be avoided. If however this is unavoidable, these trails will be left in a non-erodible condition using water bars, logs, and slash. Placing of slash on these skid trails while logging is ongoing may alleviate need for any further action. At the direction of the sale administrator, seed, fertilizer, and mulch may also be required.

#### 5.8 - Protection of Endangered Species

##### 5.8.5 - Protection of raptor nests (3/13)

All trees with raptor nests will be protected if found during harvesting operations. Notification will be made to the Unit Manager or his/her representative who will notify the Wildlife Biologist so an on-site evaluation and recommendation can be made, if necessary.

### 6 - Safety and Fire Prevention

#### 6.2 - Signing

##### 6.2.3 - Recreational trail posting (2/10)

The Purchaser is responsible for posting and maintaining caution signs on Hunt Creek Motorcycle Trail prior to beginning operations. The trail must be posted at appropriate distances from the sale area (approximately 200 feet) to warn of logging activity and truck traffic at both ends of the trail. Signs must be removed when harvest operations are suspended or completed. The Purchaser will provide these signs.

### 7 - Other Conditions



## 7.3 - Contract Modifications

### 7.3.2 - Modification for oak wilt (2/05)

Within the sale area, there may be patches of oak wilt. If oak wilt is identified within the sale area, this contract may be modified. The following modifications could occur: time of cutting, species to cut, volume to harvest, or various others dealing with the treatment of oak wilt. If a species is not specified in this contract, it shall be paid for at the average price received for that species and product.



# TIMBER SALE MAP

This information provided by authority of Part 525, 1994 PA 451, as amended.

Sale Number	Year
54 - 016	17

Forest Management Unit Atlanta	County Montmorency	Mapped By D. Natzke	Date 07/26/2017	Page 1	of 2
Township 29N	Range 02E	Section(s) and Subdivision(s) 30 - E2SW, SWSE & 32 - N2NE, SESE	Scale 1:15,840		

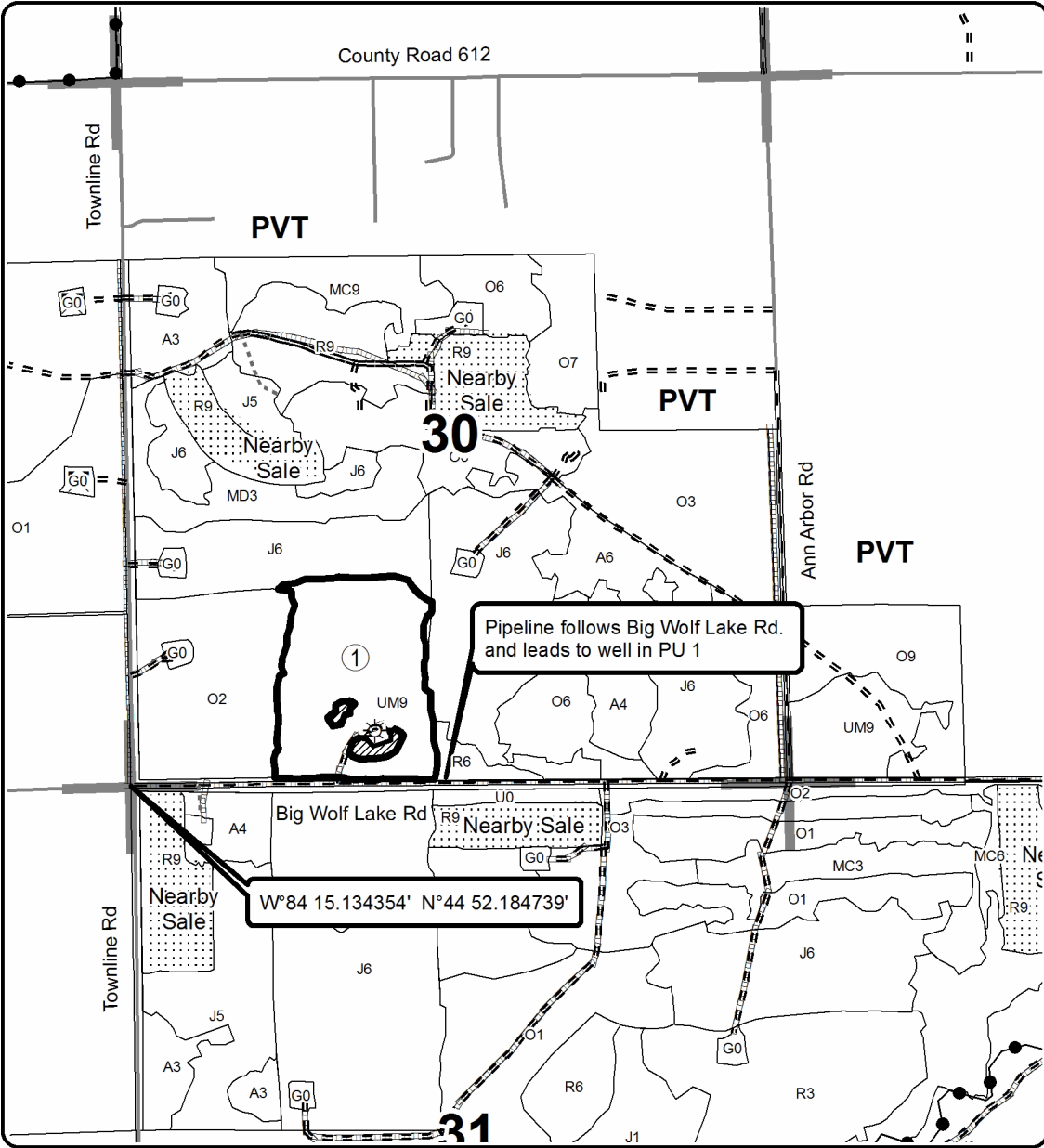
Cover Type				Density	
A = Aspen	H = Hemlock	N = Marsh	U = Upland Brush	0 = Non Stocked	5 = Pole Timber Medium
B = Paper Birch	J = Jack Pine	O = Oak	UM = Upland Mixed	1 = Seedling Sapling Poor	6 = Pole Timber Well
C = Cedar	L = Lowland Brush	P = Lowland Poplar	V = Bog or Marsh	2 = Seedling Sapling Medium	7 = Saw Timber Poor
D = Tread Bog	LM = Lowland Mixed	Q = Mixed Swamp Conifer	W = White Pine	3 = Seedling Sapling Well	8 = Saw Timber Medium
E = Swamp Hdwoods	M = Mpl, Bch, Brch	R = Red Pine	X = Non Stocked	4 = Pole Timber Poor	9 = Saw Timber Well
F = Spruce Fir	MC = Mixed Conifer	S = Black Spruce	Z = Water		
G = Grass	MD = Mixed Deciduous	T = Tamarack			

PU	Acres	PU	Acres
1	34.7	4	9.5
2	8.0	5	5.9
3	17.4		

## Big Wolf Hardwood

### Compartment 11

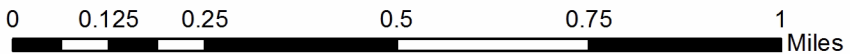
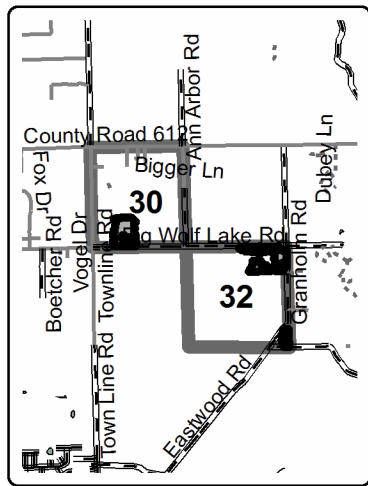
75.5 Acres



### Legend

- Against State (Red)
- ○ Payment Unit (Yellow)
- ● Private Line (Blue)
- ✕ ✕ Special Protection Area (Green)
- Section Corners
- Gravel Roads
- == Poor Dirt Roads
- Closed Roads
- Gas Pipeline
- Streams
- ▨ Retention Area
- Stand Boundaries
- Payment Unit
- ☼ Gas Well

Locator Map  
1:120,000





Sale Number	Year
54 - 016	17

# TIMBER SALE MAP

This information provided by authority of Part 525, 1994 PA 451, as amended.

Forest Management Unit Atlanta	County Montmorency	Mapped By D. Natzke	Date 07/26/2017	Page 2	of 2
Township 29N	Range 02E	Section(s) and Subdivision(s) 30 - E2SW, SWSE & 32 - N2NE, SESE	Scale 1:15,840		
Cruised By D. Natzke					

### Cover Type

A = Aspen	H = Hemlock	N = Marsh	U = Upland Brush
B = Paper Birch	J = Jack Pine	O = Oak	UM = Upland Mixed
C = Cedar	L = Lowland Brush	P = Lowland Poplar	V = Bog or Marsh
D = Tread Bog	LM = Lowland Mixed	Q = Mixed Swamp Conifer	W = White Pine
E = Swamp Hdwoods	M = Mpl, Bch, Brch	R = Red Pine	X = Non Stocked
F = Spruce Fir	MC = Mixed Conifer	S = Black Spruce	Z = Water
G = Grass	MD = Mixed Deciduous	T = Tamarack	

### Density

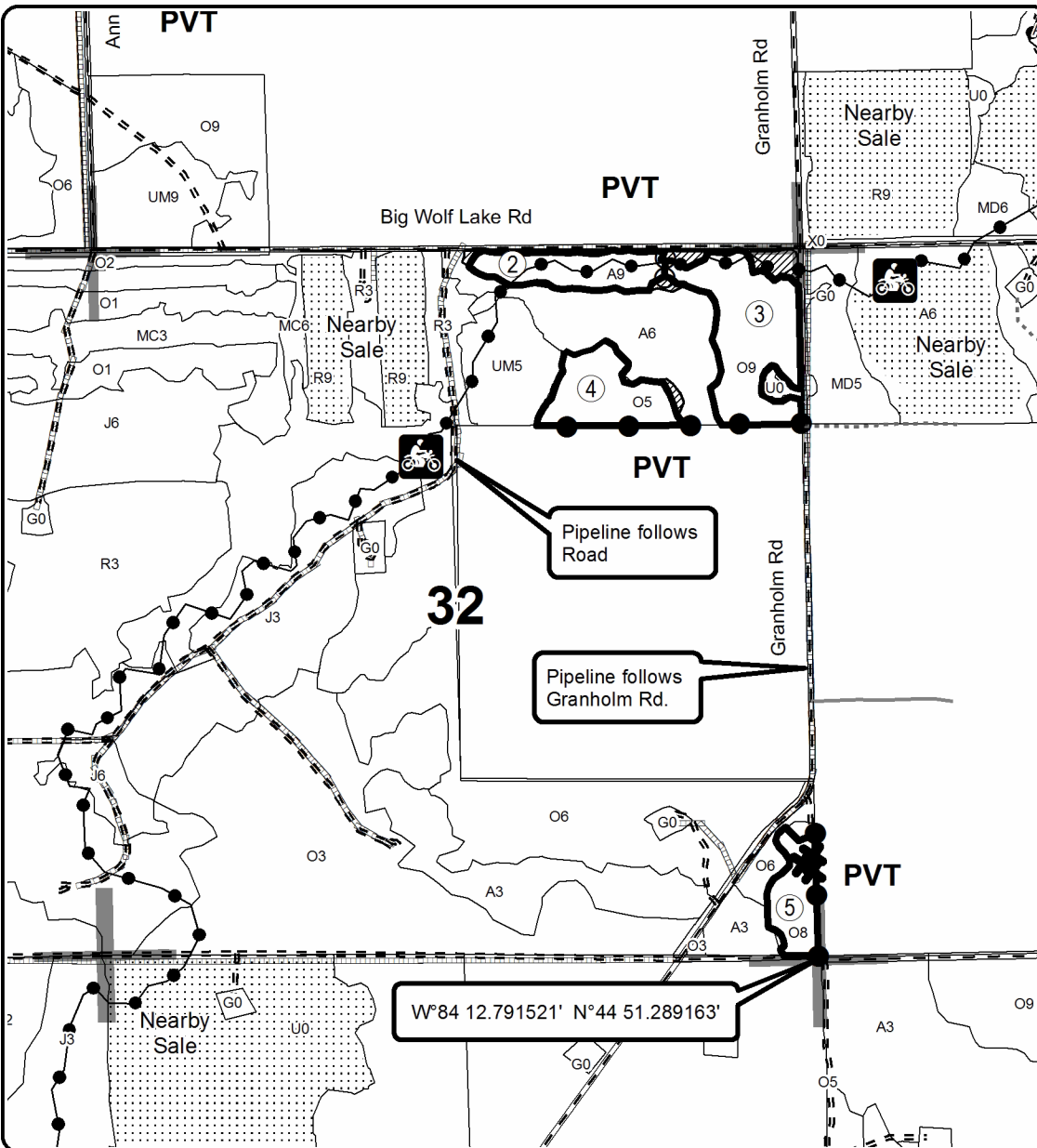
0 = Non Stocked	5 = Pole Timber Medium
1 = Seedling Sapling Poor	6 = Pole Timber Well
2 = Seedling Sapling Medium	7 = Saw Timber Poor
3 = Seedling Sapling Well	8 = Saw Timber Medium
4 = Pole Timber Poor	9 = Saw Timber Well

PU	Acres	PU	Acres
1	34.7	4	9.5
2	8.0	5	5.9
3	17.4		

## Big Wolf Hardwood

### Compartment 11

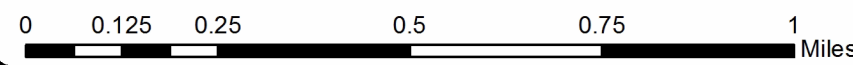
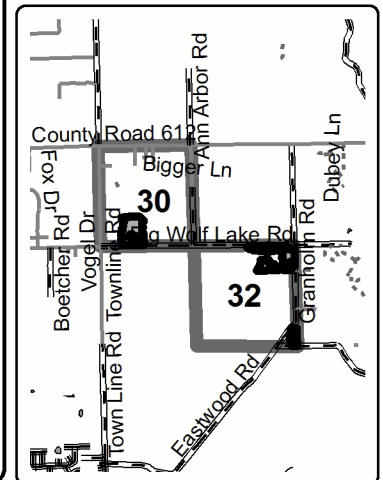
75.5 Acres



### Legend

- Against State (Red)
- Payment Unit (Yellow)
- Private Line (Blue)
- Special Protection Area (Green)
- Section Corners
- Gravel Roads
- Poor Dirt Roads
- Closed Roads
- Gas Pipeline
- Streams
- Retention Area
- Stand Boundaries
- Payment Unit
- Gas Well

Locator Map  
1:120,000





## TIMBER SALE INFORMATION

Joy an' Mitigation (54-030-17)

Montmorency County (Advertised Price \$31,894.15)

A timber sale contract for this lump sum, sealed bid timber sale will be awarded to the responsible bidder offering the highest sealed bid price. Bids must be at or above the following advertised price for each species:

<u>PRODUCTS &amp; SPECIES</u>	<u>ESTIMATED UNITS*</u>		<u>ADVERTISED PRICE</u>
Sawtimber			
Mixed Aspen	98.60	MBF	\$ 89.00 / MBF
Red Oak	4.30	MBF	\$ 169.00 / MBF
White Pine	6.90	MBF	\$ 97.00 / MBF
Pulpwood			
Balsam Fir	120.00	Cords	\$ 32.10 / Cord
Black Spruce	3.00	Cords	\$ 36.60 / Cord
Mixed Aspen	445.00	Cords	\$ 24.75 / Cord
Mixed Hardwood	231.00	Cords	\$ 19.80 / Cord
Red Oak	26.00	Cords	\$ 21.35 / Cord
Red Pine	4.00	Cords	\$ 48.70 / Cord
White Pine	26.00	Cords	\$ 54.75 / Cord

\* The total volume is statistically estimated within plus (+) or minus (-) 17.20 percent. The estimated units are final and not subject to adjustment. Prospective bidders are urged to examine this timber and to make their own estimates of quantity and quality.

**BOND AND PAYMENT SCHEDULE:**

1. A bond in the amount of \$1,595.00 to insure faithful performance of the conditions of the contract will be deposited by the successful bidder within 21 days of the sale award.
2. Cutting in any sale or unit without the required advance payment would be considered a trespass.
3. Total payment must be paid in advance or according to the following schedule:
  - (a) Ten percent (10%) of the sale value must be paid within 21 days of the sale award.
  - (b) The 10% down payment will be credited towards the first unit cut.
  - (c) Payment for each of the following units must be made before cutting begins in that unit:

PAYMENT UNIT NUMBER	PERCENT OF TOTAL SALE VALUE
01	14.4%
02	18.2%
03	32.3%
04	16.2%
05	18.9%

4. If no cutting takes place, the 10% down payment will not be refunded.
5. Operations on the contract issued will terminate on 10/31/2020.

**Description of Timber by Payment Unit (PU)**

PU	MARKET GROUP	PRODUCT	QUANTITY	UNIT	ACRES	ADVERTISE PRICE
1	Mixed Aspen	Sawtimber	15.6	MBF	8.1	\$4,596.65
	<i>B. T. Aspen</i>		14.5	<i>MBF</i>		
	<i>Balsam Poplar</i>		0.3	<i>MBF</i>		
	<i>Quaking Aspen</i>		0.8	<i>MBF</i>		
	White Pine		1.1	MBF		
	Balsam Fir	Pulpwood	28.0	Cords		
	<i>Balsam Fir</i>	<i>Sawtimber</i>	1.1	<i>MBF</i>		
	<i>Balsam Fir</i>	<i>Pulpwood</i>	26.0	<i>Cords</i>		
	Mixed Aspen		61.0	Cords		
	<i>B. T. Aspen</i>		49.0	<i>Cords</i>		
	<i>Balsam Poplar</i>		8.0	<i>Cords</i>		
	<i>Quaking Aspen</i>		4.0	<i>Cords</i>		
	Mixed Hardwood		29.0	Cords		
	<i>Red Maple</i>	<i>Sawtimber</i>	0.2	<i>MBF</i>		
	<i>Red Maple</i>	<i>Pulpwood</i>	29.0	<i>Cords</i>		
	Red Oak		3.0	Cords		
	White Pine		1.0	Cords		
2	Mixed Aspen	Sawtimber	19.6	MBF	10.2	\$5,803.30
	<i>B. T. Aspen</i>		18.3	<i>MBF</i>		
	<i>Balsam Poplar</i>		0.4	<i>MBF</i>		
	<i>Quaking Aspen</i>		0.9	<i>MBF</i>		
	White Pine		1.4	MBF		
	Balsam Fir	Pulpwood	34.0	Cords		
	<i>Balsam Fir</i>	<i>Sawtimber</i>	1.4	<i>MBF</i>		
	<i>Balsam Fir</i>	<i>Pulpwood</i>	31.0	<i>Cords</i>		
	Mixed Aspen		77.0	Cords		
	<i>B. T. Aspen</i>		62.0	<i>Cords</i>		
	<i>Balsam Poplar</i>		10.0	<i>Cords</i>		
	<i>Quaking Aspen</i>		5.0	<i>Cords</i>		
	Mixed Hardwood		38.0	Cords		
	<i>Red Maple</i>	<i>Sawtimber</i>	0.3	<i>MBF</i>		
	<i>Red Maple</i>	<i>Pulpwood</i>	37.0	<i>Cords</i>		
	Red Oak		3.0	Cords		
	White Pine		2.0	Cords		
3	Mixed Aspen	Sawtimber	29.7	MBF	15.8	\$10,301.65
	<i>B. T. Aspen</i>		29.0	<i>MBF</i>		
	<i>Balsam Poplar</i>		0.2	<i>MBF</i>		
	<i>Quaking Aspen</i>		0.5	<i>MBF</i>		
	Red Oak		2.4	MBF		
	White Pine		2.1	MBF		
	Balsam Fir	Pulpwood	22.0	Cords		
	<i>Balsam Fir</i>	<i>Sawtimber</i>	0.7	<i>MBF</i>		
	<i>Balsam Fir</i>	<i>Pulpwood</i>	21.0	<i>Cords</i>		
	Black Spruce		2.0	Cords		
	<i>Black Spruce</i>	<i>Sawtimber</i>	0.4	<i>MBF</i>		
	<i>Black Spruce</i>	<i>Pulpwood</i>	1.0	<i>Cords</i>		
	Mixed Aspen		148.0	Cords		
	<i>B. T. Aspen</i>		140.0	<i>Cords</i>		
	<i>Balsam Poplar</i>		5.0	<i>Cords</i>		
	<i>Quaking Aspen</i>		3.0	<i>Cords</i>		
	Mixed Hardwood		80.0	Cords		
	<i>Red Maple</i>	<i>Sawtimber</i>	0.1	<i>MBF</i>		
	<i>Paper Birch</i>	<i>Pulpwood</i>	17.0	<i>Cords</i>		
	<i>Red Maple</i>		61.0	<i>Cords</i>		
	<i>Sugar Maple</i>		2.0	<i>Cords</i>		
	Red Oak		10.0	Cords		

**Description of Timber by Payment Unit (PU), con't**

PU	MARKET GROUP	PRODUCT	QUANTITY	UNIT	ACRES	ADVERTISE PRICE			
3 con't	Red Pine	Pulpwood	2.0	Cords					
	White Pine		13.0	Cords					
4	Mixed Aspen	Sawtimber	17.4	MBF	9.0	\$5,172.15			
	<i>B. T. Aspen</i>		16.1	<i>MBF</i>					
	<i>Balsam Poplar</i>		0.4	<i>MBF</i>					
	<i>Quaking Aspen</i>		0.9	<i>MBF</i>					
	White Pine		1.2	MBF					
	Balsam Fir	Pulpwood	32.0	Cords					
	<i>Balsam Fir</i>	<i>Sawtimber</i>	1.3	<i>MBF</i>					
	<i>Balsam Fir</i>	<i>Pulpwood</i>	29.0	<i>Cords</i>					
	Mixed Aspen		69.0	Cords					
	<i>B. T. Aspen</i>		55.0	<i>Cords</i>					
	<i>Balsam Poplar</i>		9.0	<i>Cords</i>					
	<i>Quaking Aspen</i>		5.0	<i>Cords</i>					
	Mixed Hardwood		33.0	Cords					
	<i>Red Maple</i>	<i>Sawtimber</i>	0.2	<i>MBF</i>					
	<i>Red Maple</i>	<i>Pulpwood</i>	33.0	<i>Cords</i>					
	Red Oak		3.0	Cords					
	White Pine		1.0	Cords					
	5	Mixed Aspen	Sawtimber	16.3			MBF	8.8	\$6,037.20
		<i>B. T. Aspen</i>		16.3			<i>MBF</i>		
		Red Oak		1.9			MBF		
White Pine			1.1	MBF					
Balsam Fir		Pulpwood	4.0	Cords					
<i>Balsam Fir</i>			4.0	<i>Cords</i>					
Black Spruce			2.0	Cords					
<i>Black Spruce</i>		<i>Sawtimber</i>	0.3	<i>MBF</i>					
<i>Black Spruce</i>		<i>Pulpwood</i>	1.0	<i>Cords</i>					
Mixed Aspen			90.0	Cords					
<i>B. T. Aspen</i>			90.0	<i>Cords</i>					
Mixed Hardwood			50.0	Cords					
<i>Paper Birch</i>			13.0	<i>Cords</i>					
<i>Red Maple</i>			35.0	<i>Cords</i>					
<i>Sugar Maple</i>			2.0	<i>Cords</i>					
Red Oak			7.0	Cords					
Red Pine			2.0	Cords					
White Pine		9.0	Cords						
TOTAL:			109.8	MBF					
TOTAL:			855.0	Cords					

## Sale Specific Conditions & Requirements

**Sale Name: Joy an' Mitigation**

**Sale Number: 54-030-17 Seq#: 1**

### 1 - Sale Area

#### 1.2 - Boundaries

##### 1.2.1 - Painted boundaries (1/14)

The sale boundary and Payment Unit boundaries are marked and identified by red and yellow paint, along with a road. Exterior sale boundary lines against state are marked with red paint. Interior Payment Unit boundaries are marked with yellow paint, with the exception of the boundaries between Payment Units 2 & 3 and 4 & 5, which are unpainted and identified by Meaford Road. The painted boundary line trees are not Included Timber and are to be protected. Yellow painted trees designating an interior Payment Unit boundary are only to be cut when all surrounding Payment Units have been paid.

### 2 - Timber Specifications

#### 2.1 - Included Timber

##### 2.1.1 - Clearcut unit(s) with unmerchantable trees (6/14)

Within Payment Unit(s) 1-5, cut all trees that are two (2) inches or more at DBH, except hemlock and cedar, if present. In addition, do not cut red pine or white pine that are 26" at DBH or greater, if present. Special protection trees identified in accordance with condition 3.4.2, within clearcutting unit boundaries, are not Included Timber and are to be protected.

### 3 - Payments

#### 3.4 - Damaged Timber

##### 3.4.2 - Special Protection Trees (4/14)

The Purchaser shall not cut live or dead special protection trees within cutting units or clearings. Special protection trees are red pine and white pine that are 26" at DBH or greater. If the Purchaser's operations have cut or damaged special protection trees through carelessness, the Purchaser shall pay \$200.00 as fixed, agreed and liquidated damages for each special protection tree cut or damaged. Such payment does not constitute ownership of the undesignated timber.

#### 3.6 - Payment Unit Cutting Schedule

##### 3.6.3 - Operating schedule (12/08)

Unless changed by written agreement, only 2 Payment Unit(s) may be operated at any one time. All contractual requirements on a Payment Unit shall be completed and accepted by the Unit Manager or his/her representative prior to the opening of an additional Payment Unit.

### 4 - Transportation

#### 4.1 - Construction

##### 4.1.6 - Road construction (1/09)

Improvements of existing roads shall be done in such a way as to minimize the environmental and visual impacts. Merchantable trees shall be cut and utilized unless otherwise directed. Non-merchantable trees shall be severed and laid flat on the ground. Slash shall be scattered, and not left in windrows and kept a minimum of 10 feet back from the road edge. Stumps shall be set upright, not left on edge, and be moved at least 10 feet away from the road edge, or reserved for closing landings. Disturbed soil shall be feathered into the woods and not left in berms or windrows.

##### 4.1.12 - No new roads (1/12)

No new roads will be permitted in any Payment Unit. All operations are limited to existing roads. Skid trails only will be allowed.

#### 4.2 - Maintenance

##### 4.2.5 - Two wheel drive condition (2/04)

All existing trail roads on and adjacent to the sale area must be passable by two-wheel drive traffic for the duration of the



sale.

## 5 - Operations

### 5.1 - Notification

#### 5.1.1 - Pre-sale conference (10/16)

A pre-sale conference on site between the Purchaser and sale administrator is required prior to beginning any operations to determine landing and road locations. The Unit Manager or his/her representative must be contacted at least 10 days in advance to schedule the conference.

#### 5.1.3 - Well heads and natural gas pipelines (11/15)

The Purchaser is responsible for contacting the gas or pipeline company prior to operating equipment in the vicinity of well heads or natural gas pipelines.

#### 5.1.4 - Post-sale conference (10/16)

A post-sale conference on site between the Purchaser and sale administrator is required 5 days prior to the completion of active logging operations to determine clean-up and repair of landings, road edges, and the fulfillment of other contract specifications.

### 5.2 - Conduct of Operations

#### 5.2.2 - Hazard Trees/Snags

##### 5.2.2.1 - Den trees (10/16)

Obvious hollow and/or den trees shall be protected and left standing unless they are a safety hazard.

#### 5.2.3 - Operating Restrictions

##### 5.2.3.11 - Coppice regeneration protection (4/10)

Timber harvesting in any Payment Unit must be completed before significant aspen sprouting occurs in that Payment Unit so as to minimize damage to the new regeneration. Any post harvest operations, such as chipping, must be completed before sprouting of regeneration occurs. If it is anticipated that chipping will be delayed, then tops shall be carried to one central location or left unchipped. The Unit Manager or his/her representative may cease such operations if sprouting occurs before the operation is complete.

#### 5.2.4 - Dead and Down Creation

##### 5.2.4.4 - Dead and down creation, grouse (8/13)

To encourage grouse and other wildlife, in Payment Unit(s) 1-5, leave one, 12" diameter or larger log-length (8 foot minimum) piece on the ground for every 2 acres. These will be evenly scattered throughout the unit. This can be an unmerchantable piece or a full tree.

#### 5.2.31 - Landing locations (9/13)

Landing areas are marked on the Timber Sale Map. Operations must be confined to these designated sites unless otherwise authorized by the Unit Manager or his/her representative.

#### 5.2.32 - Decking/landing restoration (9/13)

All decking and landing areas must have the surface area restored to a condition equal to or better than before. This is to ensure the proper regeneration of the stand. Wood debris, chips and "cookies" from trimmings must be removed or scattered away from landing and loading areas and may not be windrowed on the edge.

#### 5.2.37 - No decking areas (12/08)

No decking is allowed within 50 feet of Meaford Road without the permission of the Montmorency County Road Commission.

### 5.4 - Soil Protection

#### 5.4.1 - Rutting restriction, general (7/16)

Operations are to cease immediately if equipment and weather conditions result in rutting of roads and/or skid trails which is 12 inches or greater in depth and 50 feet in length. The Unit Manager or his/her representative may restrict hauling and/or skidding if ruts exceed the specified depth. With the Unit Manager or his/her representative's approval, the Purchaser may return to the area when the risk of rutting has decreased.

#### 5.4.2 - Skid trails (2/04)

Skid trails up and down slopes should be avoided. If however this is unavoidable, these trails will be left in a non-erodible condition using water bars, logs, and slash. Placing of slash on these skid trails while logging is ongoing may alleviate need for any further action. At the direction of the sale administrator, seed, fertilizer, and mulch may also be required.



# TIMBER SALE MAP

This information provided by authority of Part 525, 1994 PA 451, as amended.

Forest Management Unit Atlanta		County Montmorency	Mapped By Barber	Date 08/28/2017	Page 1	of 1
Township 31N	Range 01E	Section(s) and Subdivision(s) 25: NENE, S2NE, E2SW, W2SE; 36: NENW		Scale 1:15,840		

### Cover Type

A = Aspen	H = Hemlock	N = Marsh	U = Upland Brush
B = Paper Birch	J = Jack Pine	O = Oak	UM = Upland Mixed
C = Cedar	L = Lowland Brush	P = Lowland Poplar	V = Bog or Marsh
D = Treed Bog	LM = Lowland Mixed	Q = Mixed Swamp Conifer	W = White Pine
E = Swamp Hdwoods	M = Mpl, Bch, Brch	R = Red Pine	X = Non Stocked
F = Spruce Fir	MC = Mixed Conifer	S = Black Spruce	Z = Water
G = Grass	MD = Mixed Deciduous	T = Tamarack	

### Density

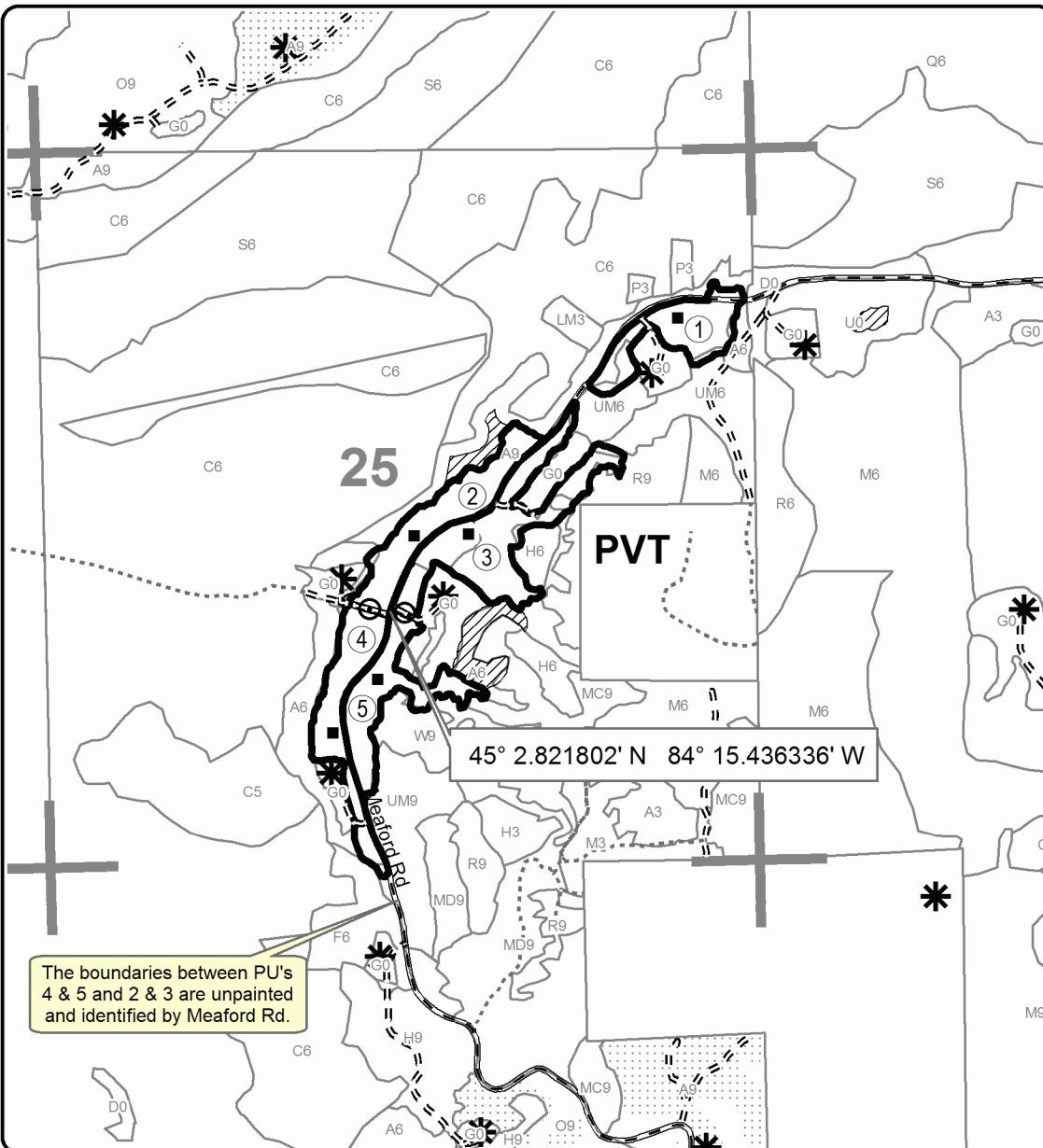
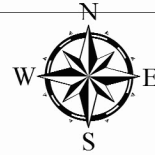
0 = Non Stocked	5 = Pole Timber Medium
1 = Seedling Sapling Poor	6 = Pole Timber Well
2 = Seedling Sapling Medium	7 = Saw Timber Poor
3 = Seedling Sapling Well	8 = Saw Timber Medium
4 = Pole Timber Poor	9 = Saw Timber Well

PU	Acres	PU	Acres
1	8.1	4	9.0
2	10.2	5	8.8
3	15.8		

## Joy an' Mitigation

### Compartment 38

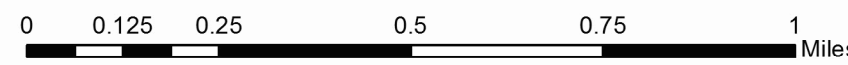
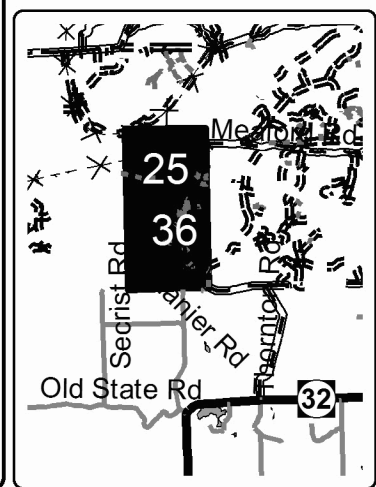
51.9 Acres



### Legend

- Against State (Red)
- Payment Unit (Yellow)
- PU\_Label
- Landing
- Retention Area
- Stand Boundaries
- Gravel Roads
- Poor Dirt Roads
- Closed Roads
- Section Corners
- Nearby Sales
- Gas Well

Locator Map  
1:150,000





**TIMBER SALE INFORMATION**

Meridian Line Aspen Oak (54-033-17)

Montmorency County (Advertised Price \$127,068.45)

SALE NOTE: Payment Unit 8 may be removed from the sale if a raptor nest is still active when operations begin. See spec 5.8.8 for details.

A timber sale contract for this lump sum, sealed bid timber sale will be awarded to the responsible bidder offering the highest sealed bid price. Bids must be at or above the following advertised price for each species:

<u>PRODUCTS &amp; SPECIES</u>	<u>ESTIMATED UNITS*</u>	<u>ADVERTISED PRICE</u>
<b>Sawtimber</b>		
Mixed Aspen	265.60 MBF	\$ 89.00 / MBF
Red Maple	27.30 MBF	\$ 138.00 / MBF
Red Oak	206.40 MBF	\$ 169.00 / MBF
Sugar Maple	20.90 MBF	\$ 406.00 / MBF
White Spruce	31.30 MBF	\$ 68.00 / MBF
<b>Pulpwood</b>		
Balsam Fir	229.00 Cords	\$ 32.10 / Cord
Basswood	22.00 Cords	\$ 13.45 / Cord
Mixed Aspen	800.00 Cords	\$ 24.75 / Cord
Mixed Hardwood	431.00 Cords	\$ 19.80 / Cord
Paper Birch	59.00 Cords	\$ 22.60 / Cord
Red Oak	600.00 Cords	\$ 21.35 / Cord
White Pine	7.00 Cords	\$ 54.75 / Cord
White Spruce	100.00 Cords	\$ 36.60 / Cord

\* The total volume is statistically estimated within plus (+) or minus (-) 9.13 percent. The estimated units are final and not subject to adjustment. Prospective bidders are urged to examine this timber and to make their own estimates of quantity and quality.

**BOND AND PAYMENT SCHEDULE:**

1. A bond in the amount of \$6,353.00 to insure faithful performance of the conditions of the contract will be deposited by the successful bidder within 21 days of the sale award.
2. Cutting in any sale or unit without the required advance payment would be considered a trespass.
3. Total payment must be paid in advance or according to the following schedule:
  - (a) Ten percent (10%) of the sale value must be paid within 21 days of the sale award.
  - (b) The 10% down payment will be credited towards the first unit cut.
  - (c) Payment for each of the following units must be made before cutting begins in that unit:

<u>PAYMENT UNIT NUMBER</u>	<u>PERCENT OF TOTAL SALE VALUE</u>
01	17.5%
02	14.5%
03	4.4%
04	8.6%
05	4.6%
06	15.4%
07	32.3%
08	2.7%

4. If no cutting takes place, the 10% down payment will not be refunded.
5. Operations on the contract issued will terminate on 12/31/2020.

**Description of Timber by Payment Unit (PU)**

PU	MARKET GROUP	PRODUCT	QUANTITY	UNIT	ACRES	ADVERTISE PRICE
1	Mixed Aspen	Sawtimber	94.9	MBF	19.1	\$22,266.50
	<i>Balsam Poplar</i>		11.2	<i>MBF</i>		
	<i>Quaking Aspen</i>		83.7	<i>MBF</i>		
	Red Maple		1.1	MBF		
	White Spruce		27.8	MBF		
	Balsam Fir	Pulpwood	116.0	Cords		
	<i>Balsam Fir</i>	<i>Sawtimber</i>	8.4	<i>MBF</i>		
	<i>Balsam Fir</i>	<i>Pulpwood</i>	99.0	<i>Cords</i>		
	Mixed Aspen		212.0	Cords		
	<i>Balsam Poplar</i>		35.0	<i>Cords</i>		
	<i>Quaking Aspen</i>		177.0	<i>Cords</i>		
	Mixed Hardwood		3.0	Cords		
	<i>Red Maple</i>		3.0	<i>Cords</i>		
	Paper Birch		5.0	Cords		
	<i>Paper Birch</i>	<i>Sawtimber</i>	1.1	<i>MBF</i>		
	<i>Paper Birch</i>	<i>Pulpwood</i>	3.0	<i>Cords</i>		
	White Spruce		72.0	Cords		
2	Mixed Aspen	Sawtimber	78.2	MBF	24.2	\$18,479.60
	<i>B. T. Aspen</i>		26.9	<i>MBF</i>		
	<i>Balsam Poplar</i>		1.3	<i>MBF</i>		
	<i>Quaking Aspen</i>		50.0	<i>MBF</i>		
	White Spruce		3.5	MBF		
	Balsam Fir	Pulpwood	74.0	Cords		
	<i>Balsam Fir</i>	<i>Sawtimber</i>	5.1	<i>MBF</i>		
	<i>Balsam Fir</i>	<i>Pulpwood</i>	64.0	<i>Cords</i>		
	Mixed Aspen		288.0	Cords		
	<i>B. T. Aspen</i>		102.0	<i>Cords</i>		
	<i>Balsam Poplar</i>		26.0	<i>Cords</i>		
	<i>Quaking Aspen</i>		160.0	<i>Cords</i>		
	Mixed Hardwood		27.0	Cords		
	<i>Red Maple</i>		27.0	<i>Cords</i>		
	White Pine		4.0	Cords		
	<i>White Pine</i>		4.0	<i>Cords</i>		
	White Spruce		28.0	Cords		
3	Mixed Aspen	Sawtimber	17.7	MBF	4.9	\$5,585.75
	<i>B. T. Aspen</i>		17.7	<i>MBF</i>		
	Red Oak		0.6	MBF		
	Sugar Maple		5.7	MBF		
	Mixed Aspen	Pulpwood	40.0	Cords		
	<i>B. T. Aspen</i>		40.0	<i>Cords</i>		
	Mixed Hardwood		23.0	Cords		
	<i>Sugar Maple</i>		23.0	<i>Cords</i>		
Red Oak		7.0	Cords			
4	Mixed Aspen	Sawtimber	19.0	MBF	13.3	\$10,919.30
	<i>Quaking Aspen</i>		19.0	<i>MBF</i>		
	Red Maple		16.3	MBF		
	Red Oak		4.9	MBF		
	Balsam Fir	Pulpwood	39.0	Cords		
	<i>Balsam Fir</i>	<i>Sawtimber</i>	0.6	<i>MBF</i>		
	<i>Balsam Fir</i>	<i>Pulpwood</i>	38.0	<i>Cords</i>		
	Basswood		19.0	Cords		
	<i>Basswood</i>	<i>Sawtimber</i>	3.9	<i>MBF</i>		
	<i>Basswood</i>	<i>Pulpwood</i>	11.0	<i>Cords</i>		
	Mixed Aspen		56.0	Cords		
<i>Quaking Aspen</i>		56.0	<i>Cords</i>			
Mixed Hardwood		124.0	Cords			

Description of Timber by Payment Unit (PU), con't

PU	MARKET GROUP	PRODUCT	QUANTITY	UNIT	ACRES	ADVERTISE PRICE
4 con't	<i>Ironwood</i>	<i>Pulpwood</i>	1.0	<i>Cords</i>		
	<i>Red Maple</i>		123.0	<i>Cords</i>		
	Paper Birch		15.0	<i>Cords</i>		
	<i>Paper Birch</i>		15.0	<i>Cords</i>		
	Red Oak		14.0	<i>Cords</i>		
	White Pine		3.0	<i>Cords</i>		
	<i>White Pine</i>	<i>Sawtimber</i>	0.7	<i>MBF</i>		
	<i>White Pine</i>	<i>Pulpwood</i>	2.0	<i>Cords</i>		
5	Mixed Aspen	Sawtimber	13.6	MBF	11.0	\$5,854.05
	<i>B. T. Aspen</i>		13.6	<i>MBF</i>		
	Red Maple		0.3	MBF		
	Red Oak		7.9	MBF		
	Sugar Maple		1.1	MBF		
	Basswood	Pulpwood	3.0	<i>Cords</i>		
	<i>Basswood</i>		3.0	<i>Cords</i>		
	Mixed Aspen		38.0	<i>Cords</i>		
	<i>B. T. Aspen</i>		38.0	<i>Cords</i>		
	Mixed Hardwood		39.0	<i>Cords</i>		
	<i>Ironwood</i>		1.0	<i>Cords</i>		
	<i>Red Maple</i>		6.0	<i>Cords</i>		
	<i>Sugar Maple</i>		32.0	<i>Cords</i>		
	Red Oak		50.0	<i>Cords</i>		
6	Mixed Aspen	Sawtimber	31.9	MBF	23.8	\$19,604.15
	<i>B. T. Aspen</i>		31.9	<i>MBF</i>		
	Red Maple		0.6	MBF		
	Red Oak		45.0	MBF		
	Sugar Maple		0.6	MBF		
	Mixed Aspen	Pulpwood	144.0	<i>Cords</i>		
	<i>B. T. Aspen</i>		144.0	<i>Cords</i>		
	Mixed Hardwood		64.0	<i>Cords</i>		
	<i>Red Maple</i>		55.0	<i>Cords</i>		
	<i>Sugar Maple</i>		9.0	<i>Cords</i>		
	Paper Birch		8.0	<i>Cords</i>		
	<i>Paper Birch</i>		8.0	<i>Cords</i>		
	Red Oak		179.0	<i>Cords</i>		
7	Mixed Aspen	Sawtimber	1.0	MBF	25.4	\$40,957.45
	<i>Quaking Aspen</i>		1.0	<i>MBF</i>		
	Red Maple		8.0	MBF		
	Red Oak		140.9	MBF		
	Sugar Maple		13.5	MBF		
	Mixed Aspen	Pulpwood	2.0	<i>Cords</i>		
	<i>Quaking Aspen</i>		2.0	<i>Cords</i>		
	Mixed Hardwood		147.0	<i>Cords</i>		
	<i>Beech</i>		6.0	<i>Cords</i>		
	<i>Red Maple</i>		72.0	<i>Cords</i>		
	<i>Sugar Maple</i>		69.0	<i>Cords</i>		
	Paper Birch		31.0	<i>Cords</i>		
	<i>Paper Birch</i>	<i>Sawtimber</i>	3.5	<i>MBF</i>		
	<i>Paper Birch</i>	<i>Pulpwood</i>	24.0	<i>Cords</i>		
Red Oak		319.0	<i>Cords</i>			
8	Mixed Aspen	Sawtimber	9.3	MBF	6.0	\$3,401.65
	<i>B. T. Aspen</i>		9.3	<i>MBF</i>		
	Red Maple		1.0	MBF		
	Red Oak		7.1	MBF		
	Mixed Aspen	Pulpwood	20.0	<i>Cords</i>		
	<i>B. T. Aspen</i>		20.0	<i>Cords</i>		

**Description of Timber by Payment Unit (PU), con't**

PU	MARKET GROUP	PRODUCT	QUANTITY	UNIT	ACRES	ADVERTISE PRICE
8 con't	Mixed Hardwood	Pulpwood	4.0	Cords		
	<i>Red Maple</i>		4.0	<i>Cords</i>		
	Red Oak		31.0	Cords		
TOTAL:			551.5	MBF		
TOTAL:			2,248.0	Cords		



## Sale Specific Conditions & Requirements

**Sale Name: Meridian Line Aspen Oak**

**Sale Number: 54-033-17 Seq#: 1**

### 1 - Sale Area

#### 1.2 - Boundaries

##### 1.2.1 - Painted boundaries (1/14)

The sale boundary and Payment Unit boundaries are marked and identified by blue, red and yellow paint. Exterior sale boundary lines against private property are marked with blue paint. Exterior sale boundary lines against state are marked with red paint, with the exception of the west boundary of Payment Units 5 and 8, which is unpainted and identified by Meridian Line Road, and the north boundary of Payment Unit 3, which is unpainted and identified by County Road 622. Interior Payment Unit boundaries are marked with yellow paint. The painted boundary line trees are Included Timber against all maintained openings. Yellow painted trees designating an interior Payment Unit boundary are only to be cut when all surrounding Payment Units have been paid.

### 2 - Timber Specifications

#### 2.1 - Included Timber

##### 2.1.2 - Clearcut unit(s) w/o unmerchantable trees (8/11)

Within Payment Unit(s) 1-8, cut all trees which meet minimum piece specifications in 2.2 Utilization, with the following exceptions:

Within Payment Units 1 and 4, do not cut northern white cedar and hemlock.

Within Payment Units 5 and 6, do not cut red pine and white pine.

Within Payment Unit 7, do not cut red pine, white pine, northern white cedar and hemlock.

##### 2.1.11 - Description of timber note (2/04)

Note that Mixed Aspen is B.T. aspen, quaking aspen and balsam poplar. Mixed Hardwood is beech, ironwood, red maple, and sugar maple.

#### 2.2 - Utilization

##### 2.2.6 - Roundwood operation required (5/07)

The skidding of whole trees or tree segments with limbs attached is prohibited within Payment Unit 7. All products must be produced as roundwood and forwarded to existing roads or landing areas in final product length.

### 3 - Payments

#### 3.3 - Pre-measured Sales

##### 3.3.4 - Dividing payment units (7/14)

Payment Unit(s) 7 may be divided at the request of the Purchaser and upon approval of the Unit Manager. Dividing Payment Units is a contract modification which requires a Timber Sale Contract Supplement. There will be only one division per Payment Unit.

#### 3.4 - Damaged Timber

##### 3.4.1 - Damaged timber (6/14)

General Condition and Requirement 3.4 Damaged Timber, defines liquidated damages for undesignated live merchantable trees which are cut or injured. In addition, extreme care should be taken to avoid damage to red pine and white pine seedlings and saplings.

Within the sale area, if more than 25% of the red pine or white pine seedlings and saplings (1/4" to 4.5" DBH) within a specified portion of the sale area are damaged, liquidated damages will be assessed at \$100 per acre for all acreage within that specified portion of the sale area that was damaged.

No damage is acceptable to undesignated merchantable trees. Within the sale area, if more than 50% of trees (> 4.5" DBH) within a specified area of the sale are damaged, liquidated damages will be assessed for all trees damaged. Rates will be in accordance with General Condition and Requirement 3.4 Damaged Timber.

#### 3.4.2 - Special Protection Trees (4/14)

The Purchaser shall not cut live or dead special protection trees within cutting units or clearings. Special protection trees are white pine trees greater than 26 inches at DBH. If the Purchaser's operations have cut or damaged special protection trees through carelessness, the Purchaser shall pay \$100 as fixed, agreed and liquidated damages for each special protection tree cut or damaged. Such payment does not constitute ownership of the undesignated timber.

### 4 - Transportation

#### 4.1 - Construction

##### 4.1.3 - Slash and earthen piles (8/04)

Piles or windrows of earth along roads and landings that have been widened or constructed shall be leveled. Slash from road maintenance or construction, including stumps, shall be dispersed throughout the sale or chipped, utilized or otherwise removed from the sale.

##### 4.1.6 - Road construction (1/09)

Construction of new roads or improvements of existing roads shall be done in such a way as to minimize the environmental and visual impacts. Merchantable trees shall be cut and utilized unless otherwise directed. Non-merchantable trees shall be severed and laid flat on the ground. Slash shall be chipped, utilized or otherwise removed from the sale. Stumps shall be set upright, not left on edge, and be moved at least 10 feet away from the road edge. Disturbed soil shall be feathered into the woods and not left in berms or windrows.

##### 4.1.7 - Road closure (10/11)

All new roads built into the sale must be blocked to vehicle traffic within 30 days of completion of hauling. Overgrown roads that are reopened shall be considered new roads. In general, this will require constructing a four (4') foot high berm of stumps and logs covered with earth. These roads must be rendered impassable to cars and trucks. All stumps from road building and landing construction must be reserved to block any newly constructed roads upon completion of the sale. These stumps must be scattered along the road system to prohibit vehicular movement.

#### 4.2 - Maintenance

##### 4.2.3 - Road maintenance (8/13)

The following road maintenance is required: Within 60 days of completion of hauling, or if no hauling occurs for 60 days, the road must be maintained and graded. This includes cleaning of drainage areas, grading, crowning and filling with gravel, if necessary. Damages will be assessed if grading/repair does not occur.

##### 4.2.5 - Two wheel drive condition (2/04)

All existing trail roads on and adjacent to the sale area must be passable by two-wheel drive traffic for the duration of the sale.

#### 4.4 - Access

##### 4.4.1 - Private property access (3/11)

Permission for access across private land is the responsibility of the Purchaser. Should the Purchaser desire to cross private land, a copy of the written permission from the private land-owner is required by the DNR.

### 5 - Operations

#### 5.1 - Notification

##### 5.1.3 - Well heads and natural gas pipelines (11/15)

The Purchaser is responsible for contacting the gas or pipeline company 30 days prior to operating equipment in the vicinity of well heads or natural gas pipelines. Contact George Kassuba @ (989) 390-1614.

#### 5.2 - Conduct of Operations

##### 5.2.1 - Slash

#### 5.2.1.10 - No slash in openings (5/10)

No brush or logging debris is to be left in the maintained wildlife openings are indicated by G0 on the Timber Sale Map. Any damage to the opening shall be repaired according to specifications of the Unit Manager or his/her representative.

### 5.2.2 - Hazard Trees/Snags

#### 5.2.2.1 - Den trees (10/16)

Obvious hollow and/or den trees shall be protected and left standing unless they are a safety hazard.

### 5.2.3 - Operating Restrictions

#### 5.2.3.1 - Operating restrictions (9/11)

Within Payment Unit(s) 1 and 2, unless changed by written agreement, cutting, skidding, and hauling are limited to winter with frozen ground conditions. This restriction is because wildlife considerations.

#### 5.2.3.4 - Oak wilt restriction (4/17)

Within Payment Unit(s) 5-8, unless changed by written agreement, cutting, skidding, and hauling are not permitted during the period of April 15 to July 15. Operations may be allowed if specific steps are taken to prevent damaging uncut oak during the high risk period. Those steps include completing all road brushing before April 15th, clearing a tree-length buffer along uncut oak cover before April 15th or leaving an uncut buffer there until after July 15th. This is necessary to reduce the spread of oak wilt. For more information, contact the Unit Manager or his/her representative.

#### 5.2.3.11 - Coppice regeneration protection (4/10)

Timber harvesting in any Payment Unit must be completed before significant sprouting occurs in that Payment Unit so as to minimize damage to the new regeneration. Any post harvest operations, such as chipping, must be completed before sprouting of regeneration occurs. If it is anticipated that chipping will be delayed, then tops shall be carried to one central location or left unchipped. The Unit Manager or his/her representative may cease such operations if sprouting occurs before the operation is complete.

### 5.2.4 - Dead and Down Creation

#### 5.2.4.4 - Dead and down creation, grouse (8/13)

To encourage grouse and other wildlife, in Payment Unit(s) 1-6 and 8, leave one, 12" diameter or larger log-length (8 foot minimum) piece on the ground for every 2 acres. These will be evenly scattered throughout the unit. This can be an unmerchantable piece or a full tree.

#### 5.2.17 - Crane Mats/Timber Mats (10/14)

Some roads or skid trails may require extra protection such as that afforded by Crane Mats/Timber Mats. Approximately 40 feet of Crane Mats/Timber Mats or something similar must be used on haul trails at locations shown on the Timber Sale Map. If available, Crane Mats/Timber Mats may be borrowed from the DNR and are located at the Marquette ICC and the Grayling Field Office. Contact the sale administrator for specific details. A Timber Sale Contract Supplement will be used to document the Purchaser's use of the DNR's Crane Mats/Timber Mats. It is the responsibility of the Purchaser to contact the sale administrator to schedule pick up and drop off. In addition, all mats must be cleaned prior to drop off. A charge of \$350.00 will be assessed for all damaged or non-returned mats. Damage is defined as misuse resulting in three or more broken cants.

#### 5.2.32 - Decking/landing restoration (9/13)

All decking and landing areas must have the surface area restored to a condition equal to or better than before. This is to ensure the proper regeneration of the stand. Wood debris, chips and "cookies" from trimmings must be removed or scattered away from landing and loading areas and may not be windrowed on the edge.

#### 5.2.38 - No decking against live trees (2/04)

Cut products may not be decked against unmarked or designated leave trees.

### 5.4 - Soil Protection

#### 5.4.1 - Rutting restriction, general (7/16)

Operations are to cease immediately if equipment and weather conditions result in rutting of roads and/or skid trails which is 12 inches or greater in depth and 50 feet in length. The Unit Manager or his/her representative may restrict hauling and/or skidding if ruts exceed the specified depth. With the Unit Manager or his/her representative's approval, the Purchaser may

return to the area when the risk of rutting has decreased.

#### 5.4.6 - Wet area protection (5/10)

No harvesting operations, including skidding and felling, are to take place within the vernal pond areas or drainages. When harvesting occurs, there should be no disturbance to the vernal pond depression. All equipment, trees and tops should be kept out of this area. Within 100 feet of the pond, equipment should only be used when the soil is in a dry or frozen condition. Care must be taken by the Purchaser to identify and avoid operating in these areas of the timber sale.

### 5.8 - Protection of Endangered Species

#### 5.8.5 - Protection of raptor nests (3/13)

All trees with raptor nests will be protected if found during harvesting operations. Notification will be made to the Unit Manager or his/her representative who will notify the Wildlife Biologist so an on-site evaluation and recommendation can be made, if necessary.

#### 5.8.8 - Protected species, other (2/12)

There is an active raptor nest within Payment Unit 8. The Purchaser is responsible for notifying the Unit Manager or his/her representative before operations begin in Payment Unit 8 so a Wildlife Biologist can make an on-site evaluation to determine if the nest is still active. If it is determined that the nest is active after all other Payment Units have been completed, Payment Unit 8 will be removed from the sale with a Timber Sale Contract Supplement.

## 6 - Safety and Fire Prevention

### 6.2 - Signing

#### 6.2.1 - Road posting (9/09)

The Purchaser is responsible for posting and maintaining caution signs on forest roads prior to beginning operations. The road must be posted at appropriate distances from the sale area to warn of logging activity and truck traffic. Signs must be removed when harvest operations are suspended or completed. The Purchaser will provide these signs.



Sale Number	Year
54 - 033	17

# TIMBER SALE MAP

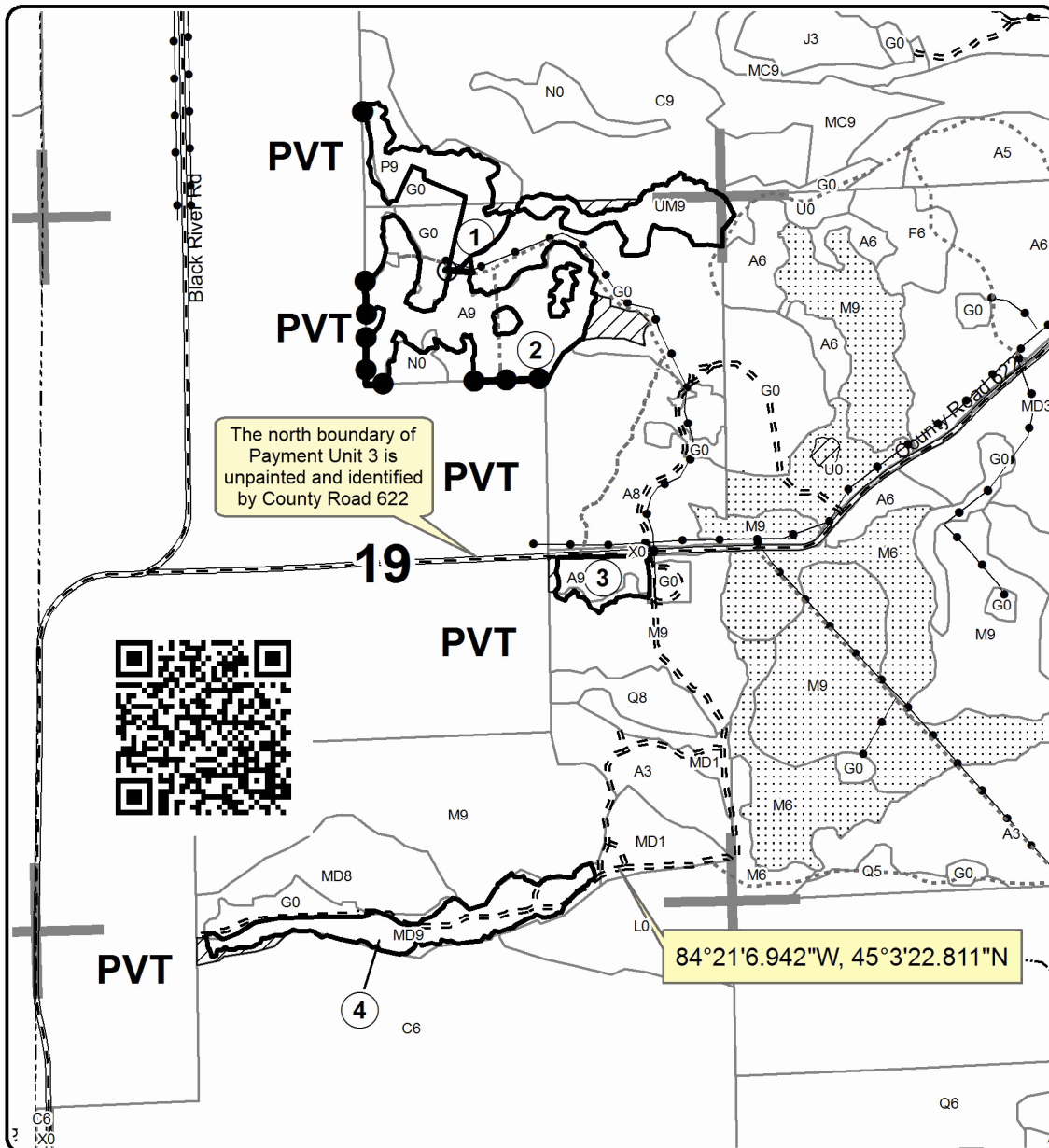
This information provided by authority of Part 525, 1994 PA 451, as amended.

Forest Management Unit Atlanta Management Unit		County Montmorency	Mapped By A Krugh	Date 08/17/2017	Page 1	of 2
Township 31N	Range 01E	Section(s) and Subdivision(s) Sec 18 S2SE Sec 19 N2NE NESE SESW Sec 20 NWNW Sec 30 NWNE NENW Sec 31 S2NE NWNE NW NWSE N2SW		Scale 1:15,840		

Cover Type				Density			
A = Aspen	H = Hemlock	N = Marsh	U = Upland Brush	0 = Non Stocked	5 = Pole Timber Medium		
B = Paper Birch	J = Jack Pine	O = Oak	UM = Upland Mixed	1 = Seedling Sapling Poor	6 = Pole Timber Well		
C = Cedar	L = Lowland Brush	P = Lowland Poplar	V = Bog or Marsh	2 = Seedling Sapling Medium	7 = Saw Timber Poor		
D = Treed Bog	LM = Lowland Mixed	Q = Mixed Swamp Conifer	W = White Pine	3 = Seedling Sapling Well	8 = Saw Timber Medium		
E = Swamp Hdwoods	M = Mpl, Bch, Brch	R = Red Pine	X = Non Stocked	4 = Pole Timber Poor	9 = Saw Timber Well		
F = Spruce Fir	MC = Mixed Conifer	S = Black Spruce	Z = Water				
G = Grass	MD = Mixed Deciduous	T = Tamarack					

PU	Acres	PU	Acres
1	19.1	5	11.0
2	24.2	6	23.8
3	4.9	7	25.4
4	13.3	8	6.0

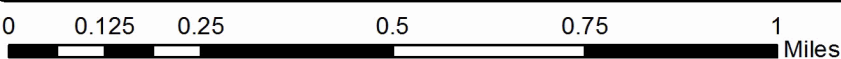
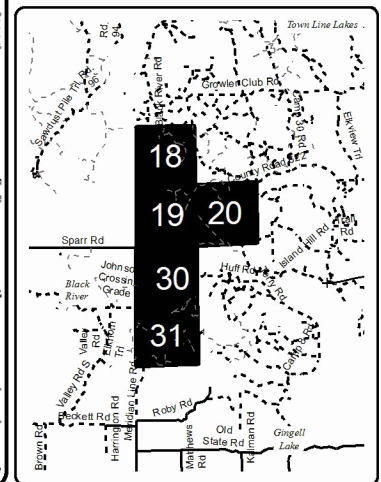
## Meridian Line Aspen Oak Compartment 33 127.7 Acres



**Legend**

- Against State (Red)
- Payment Unit (Yellow)
- Private Line (Blue)
- Payment Unit
- ▨ Retention Area
- ▤ Nearby Timber Sale
- ▭ Stand Boundaries
- Section Corners
- Paved Roads
- Gravel Roads
- Poor Dirt Roads
- Closed Roads
- Pipeline, Powerline
- Streams

Locator Map  
1:200,000





Sale Number	Year
54 - 033	17

# TIMBER SALE MAP

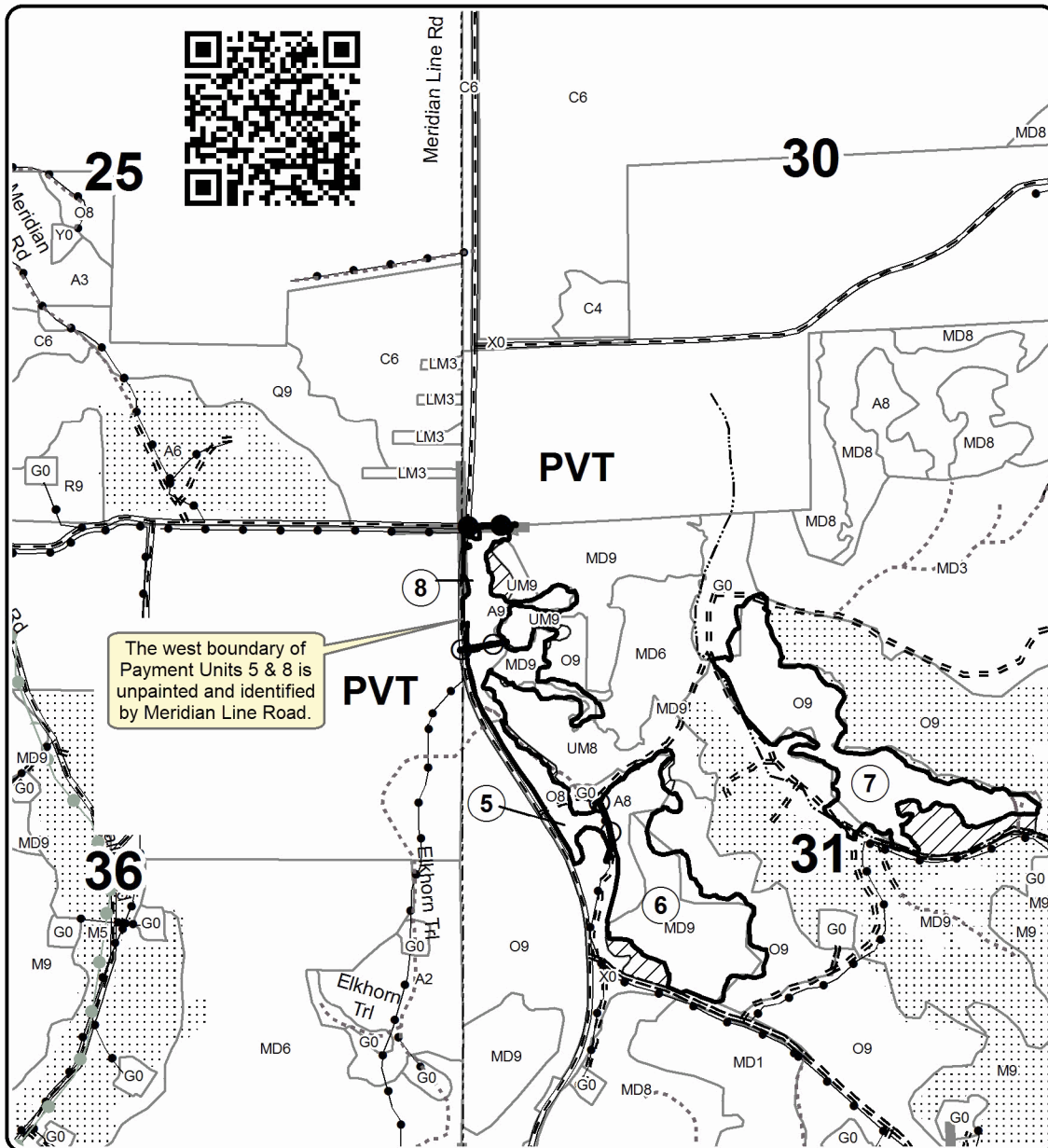
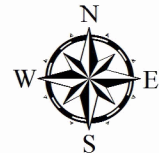
This information provided by authority of Part 525, 1994 PA 451, as amended.

Forest Management Unit Atlanta Management Unit		County Montmorency	Mapped By A Krugh	Date 08/17/2017	Page 2	of 2
Township 31N	Range 01E	Section(s) and Subdivision(s) Sec 18 S2SE Sec 19 N2NE NESE SESW Sec 20 NWNW Sec 30 NWNE NENW Sec 31 S2NE NWNE NW NWSE N2SW		Scale 1:15,840		

Cover Type				Density	
A = Aspen	H = Hemlock	N = Marsh	U = Upland Brush	0 = Non Stocked	5 = Pole Timber Medium
B = Paper Birch	J = Jack Pine	O = Oak	UM = Upland Mixed	1 = Seedling Sapling Poor	6 = Pole Timber Well
C = Cedar	L = Lowland Brush	P = Lowland Poplar	V = Bog or Marsh	2 = Seedling Sapling Medium	7 = Saw Timber Poor
D = Tread Bog	LM = Lowland Mixed	Q = Mixed Swamp Conifer	W = White Pine	3 = Seedling Sapling Well	8 = Saw Timber Medium
E = Swamp Hdwoods	M = Mpl, Bch, Brch	R = Red Pine	X = Non Stocked	4 = Pole Timber Poor	9 = Saw Timber Well
F = Spruce Fir	MC = Mixed Conifer	S = Black Spruce	Z = Water		
G = Grass	MD = Mixed Deciduous	T = Tamarack			

PU	Acres	PU	Acres
1	19.1	5	11.0
2	24.2	6	23.8
3	4.9	7	25.4
4	13.3	8	6.0

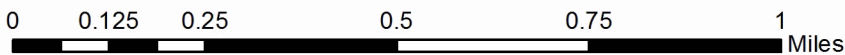
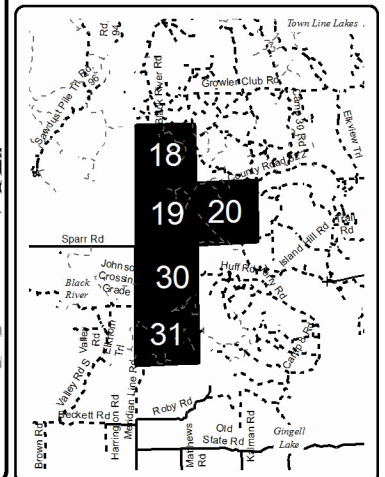
## Meridian Line Aspen Oak Compartment 33 127.7 Acres



**Legend**

- Against State (Red)
- Payment Unit (Yellow)
- Private Line (Blue)
- Payment Unit
- ▨ Retention Area
- ⋯ Nearby Timber Sale
- Stand Boundaries
- Section Corners
- == Gravel Roads
- - - Poor Dirt Roads
- ⋯ Closed Roads
- Pipeline; Powerline

Locator Map  
1:200,000



Big Wolf Red Pine (54-001-17)  
; Montmorency COUNTY

In response to the notice of sale to be held 10:00 a.m. (local time) on June 19, 2018, I am hereby submitting my sealed bid (firm offer) for the following forest products to be cut. Bids for individual species must be at or above the advertised price. All non-responsive bid forms may be rejected.

<u>PRODUCTS &amp; SPECIES</u>	<u>ESTIMATED VOLUME*</u>	<u>ADVERTISED PRICE</u>	<u>BID PRICE/UNIT</u>
Sawtimber			
Red Pine	160.10 MBF	\$ 119.00/MBF	\$ _____
Pulpwood			
Jack Pine	19.00 Cords	\$ 23.25/Cord	\$ _____
Red Pine	827.00 Cords	\$ 48.70/Cord	\$ _____

\*The volumes are statistically estimated within plus (+) or minus (-) 12.36 percent. These estimated volumes are final and not subject to adjustment. Prospective bidders are urged to examine this timber and to make their own estimates of quantity and quality.

I understand that any or all bids may be rejected. All bids must be signed and all bid items must be bid or the bid form may be rejected. I also understand that consideration and awarding a contract will be based upon my past performance and ability to complete the contract based upon equipment and staffing subject to my control.

FEDERAL ID: \_\_\_\_\_ or SOCIAL SECURITY NUMBER: \_\_\_\_\_

Company or individual bidding: \_\_\_\_\_

Company representative's name: \_\_\_\_\_

Address: \_\_\_\_\_

City: \_\_\_\_\_ State: \_\_\_\_\_ Zip: \_\_\_\_\_

IF AVAILABLE, PLEASE PLACE THE PERSONALIZED LABEL FROM YOUR PROSPECTUS IN THE ABOVE BOX.

Individual or company representative's signature: \_\_\_\_\_ Date: \_\_\_\_\_

Phone number : \_\_\_\_\_ Email (optional): \_\_\_\_\_

**THE WINNING BIDDER MUST COMPLETE THE VERIFICATION OF WORKER'S DISABILITY COMPENSATION ACT COMPLIANCE (ON REVERSE SIDE IF DOUBLE SIDED) WITHIN 21 DAYS OF SALE AWARD DATE**





FOR DEPARTMENT USE ONLY	
Sale Number (XX - XXX - XX - XX)	
Forest Management Unit:	

## TIMBER SALE VERIFICATION OF WORKER'S DISABILITY COMPENSATION ACT COMPLIANCE

As required by Act 317, P.A. 1969 (Worker's Compensation) and  
Part 5 of Act 451 of 1994, as amended.

### VERIFICATION OF WORKER'S DISABILITY COMPENSATION ACT COMPLIANCE

- This verification must be completed and submitted within 21 days of contract award and prior to the issuance of the timber sale contract.
- In addition, if boxes 2B or 2C are checked, then Notice of Exclusion or Certificate of Insurance must be submitted within twenty-one (21) days of the contract award and prior to the issuance of the timber sale contract.
- All information must be typed or printed except for written signatures.

Please Check Appropriate Categories:

1. My business is organized as (you **must** check one of the boxes below):
  - A.  Sole Proprietorship (individual)
  - B.  Partnership
  - C.  Corporation
2. You **must** check one of the boxes below:
  - A.  I certify my business is a sole proprietorship and it has no employees but the sole proprietor. I am not subject to the Worker's Compensation Laws.
  - B.  I certify my business has satisfied its obligation to the Worker's Compensation Act through the use of an approved Notice of Exclusion (BWC-337, Rev. 5/96). I will provide a copy of the Notice of Exclusion within 21 days of the contract award. (For questions or a copy of the BWC-337, please call the Worker's Compensation Bureau at 517-322-1195).
  - C.  I certify my business has a Worker's Compensation Policy. I will provide an original Certificate of Insurance within twenty-one (21) days of the contract award.
3. If you have checked item 2(A) or 2(B), you **must** indicate the number of **both** full-time and part-time employees, other than yourself, including family members and active partners (if none, you must enter "0").

\_\_\_\_\_ Full-time Employees

\_\_\_\_\_ Part-time Employees

Name of Business		Federal ID (or) Social Security No.	
Address		Telephone (       )	
City	State	ZIP	

*I hereby certify that the above information is true and correct. I agree to notify the Michigan DNR of any changes that occur in factors affecting my coverage during any of my present and future operations.*

\_\_\_\_\_  
Signature of Owner or Authorized Representative

\_\_\_\_\_  
Title

\_\_\_\_\_  
Date

Please complete the "SEALED BID" information on the next page



Big Wolf Hardwood (54-016-17)  
; Montmorency COUNTY

In response to the notice of sale to be held 10:00 a.m. (local time) on June 19, 2018, I am hereby submitting my sealed bid (firm offer) for the following forest products to be cut. Bids for individual species must be at or above the advertised price. All non-responsive bid forms may be rejected.

<u>PRODUCTS &amp; SPECIES</u>	<u>ESTIMATED VOLUME*</u>	<u>ADVERTISED PRICE</u>	<u>BID PRICE/UNIT</u>
<b>Sawtimber</b>			
B. T. Aspen	15.20 MBF	\$ 89.00/MBF	\$ _____
Jack Pine	14.40 MBF	\$ 47.00/MBF	\$ _____
Mixed Oak	74.20 MBF	\$ 106.00/MBF	\$ _____
Red Maple	4.00 MBF	\$ 138.00/MBF	\$ _____
Red Pine	5.40 MBF	\$ 119.00/MBF	\$ _____
<b>Pulpwood</b>			
Balsam Fir	2.00 Cords	\$ 32.10/Cord	\$ _____
Jack Pine	159.00 Cords	\$ 23.25/Cord	\$ _____
Mixed Aspen	258.00 Cords	\$ 24.75/Cord	\$ _____
Mixed Hardwood	147.00 Cords	\$ 19.80/Cord	\$ _____
Mixed Oak	430.00 Cords	\$ 21.35/Cord	\$ _____
Red Pine	7.00 Cords	\$ 48.70/Cord	\$ _____
White Pine	1.00 Cords	\$ 54.75/Cord	\$ _____

\*The volumes are statistically estimated within plus (+) or minus (-) 16.22 percent. These estimated volumes are final and not subject to adjustment. Prospective bidders are urged to examine this timber and to make their own estimates of quantity and quality.

I understand that any or all bids may be rejected. All bids must be signed and all bid items must be bid or the bid form may be rejected. I also understand that consideration and awarding a contract will be based upon my past performance and ability to complete the contract based upon equipment and staffing subject to my control.

FEDERAL ID: \_\_\_\_ - \_\_\_\_ - \_\_\_\_ or SOCIAL SECURITY NUMBER: \_\_\_\_ - \_\_\_\_ - \_\_\_\_

Company or individual bidding: \_\_\_\_\_

Company representative's name: \_\_\_\_\_

Address: \_\_\_\_\_

City: \_\_\_\_\_ State: \_\_\_\_\_ Zip: \_\_\_\_\_

IF AVAILABLE, PLEASE PLACE THE PERSONALIZED LABEL FROM YOUR PROSPECTUS IN THE ABOVE BOX.

Individual or company representative's signature: \_\_\_\_\_ Date: \_\_\_\_\_

Phone number : \_\_\_\_\_ Email (optional): \_\_\_\_\_

**THE WINNING BIDDER MUST COMPLETE THE VERIFICATION OF WORKER'S DISABILITY COMPENSATION ACT COMPLIANCE (ON REVERSE SIDE IF DOUBLE SIDED) WITHIN 21 DAYS OF SALE AWARD DATE**



<b>FOR DEPARTMENT USE ONLY</b>
Sale Number (XX - XXX - XX - XX)
Forest Management Unit:

## TIMBER SALE VERIFICATION OF WORKER'S DISABILITY COMPENSATION ACT COMPLIANCE

*As required by Act 317, P.A. 1969 (Worker's Compensation) and  
Part 5 of Act 451 of 1994, as amended.*

### VERIFICATION OF WORKER'S DISABILITY COMPENSATION ACT COMPLIANCE

- This verification must be completed and submitted within 21 days of contract award and prior to the issuance of the timber sale contract.
- In addition, if boxes 2B or 2C are checked, then Notice of Exclusion or Certificate of Insurance must be submitted within twenty-one (21) days of the contract award and prior to the issuance of the timber sale contract.
- All information must be typed or printed except for written signatures.

Please Check Appropriate Categories:

1. My business is organized as (you **must** check one of the boxes below):
  - A.  Sole Proprietorship (individual)
  - B.  Partnership
  - C.  Corporation
  
2. You **must** check one of the boxes below:
  - A.  I certify my business is a sole proprietorship and it has no employees but the sole proprietor. I am not subject to the Worker's Compensation Laws.
  - B.  I certify my business has satisfied its obligation to the Worker's Compensation Act through the use of an approved Notice of Exclusion (BWC-337, Rev. 5/96). I will provide a copy of the Notice of Exclusion within 21 days of the contract award. (For questions or a copy of the BWC-337, please call the Worker's Compensation Bureau at 517-322-1195).
  - C.  I certify my business has a Worker's Compensation Policy. I will provide an original Certificate of Insurance within twenty-one (21) days of the contract award.
  
3. If you have checked item 2(A) or 2(B), you **must** indicate the number of **both** full-time and part-time employees, other than yourself, including family members and active partners (if none, you must enter "0").

\_\_\_\_\_ Full-time Employees

\_\_\_\_\_ Part-time Employees

Name of Business		Federal ID (or) Social Security No.	
Address		Telephone (       )	
City	State	ZIP	

*I hereby certify that the above information is true and correct. I agree to notify the Michigan DNR of any changes that occur in factors affecting my coverage during any of my present and future operations.*

\_\_\_\_\_  
Signature of Owner or Authorized Representative

\_\_\_\_\_  
Title

\_\_\_\_\_  
Date

**Please complete the "SEALED BID" information on the next page**

Meridian Line Aspen Oak (54-033-17)  
; Montmorency COUNTY

In response to the notice of sale to be held 10:00 a.m. (local time) on June 19, 2018, I am hereby submitting my sealed bid (firm offer) for the following forest products to be cut. Bids for individual species must be at or above the advertised price. All non-responsive bid forms may be rejected.

<u>PRODUCTS &amp; SPECIES</u>	<u>ESTIMATED VOLUME*</u>	<u>ADVERTISED PRICE</u>	<u>BID PRICE/UNIT</u>
<b>Sawtimber</b>			
Mixed Aspen	265.60 MBF	\$ 89.00/MBF	\$ _____
Red Maple	27.30 MBF	\$ 138.00/MBF	\$ _____
Red Oak	206.40 MBF	\$ 169.00/MBF	\$ _____
Sugar Maple	20.90 MBF	\$ 406.00/MBF	\$ _____
White Spruce	31.30 MBF	\$ 68.00/MBF	\$ _____
<b>Pulpwood</b>			
Balsam Fir	229.00 Cords	\$ 32.10/Cord	\$ _____
Basswood	22.00 Cords	\$ 13.45/Cord	\$ _____
Mixed Aspen	800.00 Cords	\$ 24.75/Cord	\$ _____
Mixed Hardwood	431.00 Cords	\$ 19.80/Cord	\$ _____
Paper Birch	59.00 Cords	\$ 22.60/Cord	\$ _____
Red Oak	600.00 Cords	\$ 21.35/Cord	\$ _____
White Pine	7.00 Cords	\$ 54.75/Cord	\$ _____
White Spruce	100.00 Cords	\$ 36.60/Cord	\$ _____

\*The volumes are statistically estimated within plus (+) or minus (-) 9.13 percent. These estimated volumes are final and not subject to adjustment. Prospective bidders are urged to examine this timber and to make their own estimates of quantity and quality.

I understand that any or all bids may be rejected. All bids must be signed and all bid items must be bid or the bid form may be rejected. I also understand that consideration and awarding a contract will be based upon my past performance and ability to complete the contract based upon equipment and staffing subject to my control.

FEDERAL ID: \_\_\_\_\_ or SOCIAL SECURITY NUMBER: \_\_\_\_\_

Company or individual bidding: \_\_\_\_\_

Company representative's name: \_\_\_\_\_

Address: \_\_\_\_\_

City: \_\_\_\_\_ State: \_\_\_\_\_ Zip: \_\_\_\_\_

IF AVAILABLE, PLEASE PLACE THE PERSONALIZED LABEL FROM YOUR PROSPECTUS IN THE ABOVE BOX.

Individual or company representative's signature: \_\_\_\_\_ Date: \_\_\_\_\_

Phone number : \_\_\_\_\_ Email (optional): \_\_\_\_\_

**THE WINNING BIDDER MUST COMPLETE THE VERIFICATION OF WORKER'S DISABILITY COMPENSATION ACT COMPLIANCE (ON REVERSE SIDE IF DOUBLE SIDED) WITHIN 21 DAYS OF SALE AWARD DATE**



FOR DEPARTMENT USE ONLY	
Sale Number (XX - XXX - XX - XX)	
Forest Management Unit:	

## TIMBER SALE VERIFICATION OF WORKER'S DISABILITY COMPENSATION ACT COMPLIANCE

As required by Act 317, P.A. 1969 (Worker's Compensation) and  
Part 5 of Act 451 of 1994, as amended.

### VERIFICATION OF WORKER'S DISABILITY COMPENSATION ACT COMPLIANCE

- This verification must be completed and submitted within 21 days of contract award and prior to the issuance of the timber sale contract.
- In addition, if boxes 2B or 2C are checked, then Notice of Exclusion or Certificate of Insurance must be submitted within twenty-one (21) days of the contract award and prior to the issuance of the timber sale contract.
- All information must be typed or printed except for written signatures.

Please Check Appropriate Categories:

1. My business is organized as (you **must** check one of the boxes below):
  - A.  Sole Proprietorship (individual)
  - B.  Partnership
  - C.  Corporation
2. You **must** check one of the boxes below:
  - A.  I certify my business is a sole proprietorship and it has no employees but the sole proprietor. I am not subject to the Worker's Compensation Laws.
  - B.  I certify my business has satisfied its obligation to the Worker's Compensation Act through the use of an approved Notice of Exclusion (BWC-337, Rev. 5/96). I will provide a copy of the Notice of Exclusion within 21 days of the contract award. (For questions or a copy of the BWC-337, please call the Worker's Compensation Bureau at 517-322-1195).
  - C.  I certify my business has a Worker's Compensation Policy. I will provide an original Certificate of Insurance within twenty-one (21) days of the contract award.
3. If you have checked item 2(A) or 2(B), you **must** indicate the number of **both** full-time and part-time employees, other than yourself, including family members and active partners (if none, you must enter "0").

\_\_\_\_\_ Full-time Employees

\_\_\_\_\_ Part-time Employees

Name of Business		Federal ID (or) Social Security No.	
Address		Telephone (       )	
City	State	ZIP	

*I hereby certify that the above information is true and correct. I agree to notify the Michigan DNR of any changes that occur in factors affecting my coverage during any of my present and future operations.*

\_\_\_\_\_  
Signature of Owner or Authorized Representative

\_\_\_\_\_  
Title

\_\_\_\_\_  
Date

Please complete the "SEALED BID" information on the next page

Joy an' Mitigation (54-030-17)  
; Montmorency COUNTY

In response to the notice of sale to be held 10:00 a.m. (local time) on June 19, 2018, I am hereby submitting my sealed bid (firm offer) for the following forest products to be cut. Bids for individual species must be at or above the advertised price. All non-responsive bid forms may be rejected.

<u>PRODUCTS &amp; SPECIES</u>	<u>ESTIMATED VOLUME*</u>	<u>ADVERTISED PRICE</u>	<u>BID PRICE/UNIT</u>
<b>Sawtimber</b>			
Mixed Aspen	98.60 MBF	\$ 89.00/MBF	\$ _____
Red Oak	4.30 MBF	\$ 169.00/MBF	\$ _____
White Pine	6.90 MBF	\$ 97.00/MBF	\$ _____
<b>Pulpwood</b>			
Balsam Fir	120.00 Cords	\$ 32.10/Cord	\$ _____
Black Spruce	3.00 Cords	\$ 36.60/Cord	\$ _____
Mixed Aspen	445.00 Cords	\$ 24.75/Cord	\$ _____
Mixed Hardwood	231.00 Cords	\$ 19.80/Cord	\$ _____
Red Oak	26.00 Cords	\$ 21.35/Cord	\$ _____
Red Pine	4.00 Cords	\$ 48.70/Cord	\$ _____
White Pine	26.00 Cords	\$ 54.75/Cord	\$ _____

\*The volumes are statistically estimated within plus (+) or minus (-) 17.20 percent. These estimated volumes are final and not subject to adjustment. Prospective bidders are urged to examine this timber and to make their own estimates of quantity and quality.

I understand that any or all bids may be rejected. All bids must be signed and all bid items must be bid or the bid form may be rejected. I also understand that consideration and awarding a contract will be based upon my past performance and ability to complete the contract based upon equipment and staffing subject to my control.

FEDERAL ID: \_\_\_\_\_ or SOCIAL SECURITY NUMBER: \_\_\_\_\_

Company or individual bidding: \_\_\_\_\_

Company representative's name: \_\_\_\_\_

Address: \_\_\_\_\_

City: \_\_\_\_\_ State: \_\_\_\_\_ Zip: \_\_\_\_\_

IF AVAILABLE, PLEASE PLACE THE PERSONALIZED LABEL FROM YOUR PROSPECTUS IN THE ABOVE BOX.

Individual or company representative's signature: \_\_\_\_\_ Date: \_\_\_\_\_

Phone number : \_\_\_\_\_ Email (optional): \_\_\_\_\_

**THE WINNING BIDDER MUST COMPLETE THE VERIFICATION OF WORKER'S DISABILITY COMPENSATION ACT COMPLIANCE (ON REVERSE SIDE IF DOUBLE SIDED) WITHIN 21 DAYS OF SALE AWARD DATE**



FOR DEPARTMENT USE ONLY	
Sale Number (XX - XXX - XX - XX)	
Forest Management Unit:	

## TIMBER SALE VERIFICATION OF WORKER'S DISABILITY COMPENSATION ACT COMPLIANCE

As required by Act 317, P.A. 1969 (Worker's Compensation) and  
Part 5 of Act 451 of 1994, as amended.

### VERIFICATION OF WORKER'S DISABILITY COMPENSATION ACT COMPLIANCE

- This verification must be completed and submitted within 21 days of contract award and prior to the issuance of the timber sale contract.
- In addition, if boxes 2B or 2C are checked, then Notice of Exclusion or Certificate of Insurance must be submitted within twenty-one (21) days of the contract award and prior to the issuance of the timber sale contract.
- All information must be typed or printed except for written signatures.

Please Check Appropriate Categories:

1. My business is organized as (you **must** check one of the boxes below):
  - A.  Sole Proprietorship (individual)
  - B.  Partnership
  - C.  Corporation
2. You **must** check one of the boxes below:
  - A.  I certify my business is a sole proprietorship and it has no employees but the sole proprietor. I am not subject to the Worker's Compensation Laws.
  - B.  I certify my business has satisfied its obligation to the Worker's Compensation Act through the use of an approved Notice of Exclusion (BWC-337, Rev. 5/96). I will provide a copy of the Notice of Exclusion within 21 days of the contract award. (For questions or a copy of the BWC-337, please call the Worker's Compensation Bureau at 517-322-1195).
  - C.  I certify my business has a Worker's Compensation Policy. I will provide an original Certificate of Insurance within twenty-one (21) days of the contract award.
3. If you have checked item 2(A) or 2(B), you **must** indicate the number of **both** full-time and part-time employees, other than yourself, including family members and active partners (if none, you must enter "0").

\_\_\_\_\_ Full-time Employees

\_\_\_\_\_ Part-time Employees

Name of Business		Federal ID (or) Social Security No.	
Address		Telephone (       )	
City	State	ZIP	

*I hereby certify that the above information is true and correct. I agree to notify the Michigan DNR of any changes that occur in factors affecting my coverage during any of my present and future operations.*

\_\_\_\_\_  
Signature of Owner or Authorized Representative

\_\_\_\_\_  
Title

\_\_\_\_\_  
Date

Please complete the "SEALED BID" information on the next page