



**DEPARTMENT OF NATURAL RESOURCES
STATE OF MICHIGAN**

TIMBER SALE PROSPECTUS #6068

SCHEDULED SALE DATE AND TIME: 3:00 p.m. (local time) on January 23, 2018.

LOCATION: INDIAN RIVER FIELD OFFICE, 6984 WILSON RD, INDIAN RIVER, MI 49749.

PROSPECTUS NOTE: The bidder is advised to inspect the sale area and review the location, estimated volumes, operating costs and contract terms of proposed sales. Please be aware that some landowners may request 60 days or more notice for access across their land.

Notice is hereby given that bids will be received by the Unit Manager, GAYLORD MANAGEMENT UNIT, for certain timber on the following described lands:

Cyclone Aspen (52-107-17)

Cheboygan County, Advertised Price \$94,160.80, 119.6 Acres, Aspen, Hardwood.

SALE NOTE: A recreation site such as a trail, pathway, or campground is within the sale area or the vicinity. Certain restrictions/specifications may be applicable including time restrictions.

Tilhorn Mix (52-109-17)

Cheboygan County, Advertised Price \$101,764.55, 129.2 Acres, Aspen, N White Cedar.

Hebron Mix (52-110-17)

Cheboygan County, Advertised Price \$121,278.70, 187.0 Acres, Aspen, N White Cedar.

BID INSTRUCTIONS (VER. 11/28/2017):

1. Scheduled Bid Location, Date, and Time (2/11)

Bids must be received by the Unit Manager, INDIAN RIVER OFFICE, 6984 WILSON RD, INDIAN RIVER, MI 49749, no later than 3:00 p.m. (local time) on January 23, 2018. For further information concerning this sale, contact Joyce Angel at 989-732-3541 extension 5440.

2. Bidder's Qualifications (5/16)

Purchaser shall obtain workers compensation insurance to cover claims under Michigan's Worker's Disability Compensation Act of 1969 or similar employee benefit act of any other state applicable to an employee. If all or part of a timber sale was prepared by a private contractor, the contractor and that contractor's company are not permitted to bid on the timber sale contract. Bids will not be accepted from individuals or companies appearing on the DNR/FRD No-Bid List. This list contains the names of purchasers who previously failed to execute a contract within 21-days or who have a history of poor performance.

3. Preparation of Sealed Bids (5/16)

Bid Forms may be completed online thru Michigan DNR Timber Sale Online Bidding (OLB) at www.michigan.gov/timberbidding or by completing the hardcopy Bid Form found in the Timber Sale Prospectus. Hardcopy Bid Forms shall be manually signed in ink. Registration in OLB is considered your 'signature' for all bids submitted thru that system. Bid prices must be entered for each species and product in the Bid Price column for all material subject to bidding and all fill-in blanks must be completed. If erasures or other changes appear on the hardcopy Bid Form, each erasure or change must be initialed by the person signing the bid.

4. Submission of Sealed Bids (5/16)

Bid forms may be obtained from the Unit Manager or thru OLB. Bids may be submitted hardcopy or thru OLB. All hardcopy bids must be submitted on the bid form and in an envelope clearly identified as described in this section. NOTE: Only one bid form per bid envelope. Sealed bids must be submitted to the Unit office designated in the prospectus and must be submitted at or prior to the time established in the prospectus. The envelope should show on the outside (a) the sale name or number and (b) the date and time of bid opening, as shown in the prospectus. Bids received after the time specified in the sale prospectus are late bids and will be rejected.

It is possible for a bidder to submit multiple bids on a single sale. For example, a bid may be submitted hardcopy and a bid may be submitted thru OLB. Or, two bidders from the same company could both submit bids on the same sale. If this were to happen, the State would accept all bids received and award the contract accordingly. All bidding and contractual requirements would apply to all bids received.

5. Public Opening of Sealed Bids (7/16)

If conditions permit, the sealed bids will be publicly opened and posted at the time and place set in the prospectus.

If a bidder, present at a bid opening, has submitted bids on more than one sale, that bidder may withdraw their unopened bid envelopes or announce the withdrawal of their online bid after being declared the successful bidder on one sale.

6. Award of Contract (1/11)

Award of the contract will be made to the Bidder whose bid, conforming to the prospectus, is most advantageous to the State of Michigan on the basis of total value at rates bid for the estimated quantities. The State reserves the right to reject any bid or waive any minor irregularity in bids received. A written award mailed (or otherwise furnished) to the successful Bidder shall be deemed to result in a binding contract without further action by either party.

7. Down Payment (1/11)

The Bidder to whom award is made must make a down payment within 21 days of the sale award. The amount of the down payment will be calculated as shown in the Bond and Payment Schedule of this prospectus. Only cash may be used to meet this requirement.

8. Performance Security (1/11)

As guarantee of faithful performance, a cash bond, certificate of deposit, surety bond or irrevocable letter of credit (LOC) is required within 21 days of the sale award. The amount of the performance security is shown in the Bond and

Payment Schedule of this prospectus. If an LOC or surety is used, the coverage must extend for at least 6 months beyond the contract expiration.

9. Timber Sale Contract (11/17)

Additional conditions and requirements common to all timber sales are listed on the timber sale contract (R4031) and are available on line at www.michigan.gov/timber. Contact the Unit Manager for additional information or a sample contract. Within 21 days of the date of the award letter, the bidder must sign the contract and provide the required down payment, performance security, and verification of worker's disability compensation. The down payment and performance security shall be in accordance with the provisions of the timber sale contract, in the sums stated in this prospectus. If these actions are not taken, then the Bidder, the Bidder's corporation, and the corporation's principals may not be permitted to bid on State timber sales for a period of 1 year. In addition, the Bidder certifies that if awarded this contract, the Bidder will complete the timber sale contract in accordance with its terms and any modifications thereof including requirements to purchase, cut, and remove the included timber by the expiration date.

Payment Unit values in the State Forest Timber Sale Contract are calculated based on the advertised value of the Payment Unit as a percentage of the total advertised value of the contract. The advertised value of each Payment Unit is given in the Description of Timber by Payment Unit table on the Timber Sale Information page. For example, if the value of Payment Unit 1 is advertised as \$1,500 and the total Timber Sale value is advertised as \$10,000, the contract price for Payment Unit 1 will be 15% of the total bid price ($\$1,500/\$10,000 * 100$).

10. Disclaimer of Estimates and Bidder's Warranty of Inspection (7/16)

Before submitting this bid, the Bidder is advised and cautioned to inspect the sale area, review the requirements of the sale contract, and take other steps as may be reasonably necessary to ascertain the location, estimated volumes, construction estimates, and operating costs of the proposed sale. Failure to do so will not relieve the Bidder from responsibility for completing the contract.

The Bidder warrants that this bid is submitted solely on the basis of the Bidder's examination and inspection of the quality and quantity of the timber offered for sale and the Bidder's opinion of the value thereof and the costs of recovery. No reliance should be placed on the State of Michigan's estimates of timber quality, quantity or costs of recovery. Bidder further acknowledges that the State of Michigan: (i) expressly disclaims any warranty of fitness of timber for any purpose; (ii) offers this timber as is without any warranty of quality (merchantability) or quantity and (iii) expressly disclaims any warranty as to the quantity or quality of timber sold.

11. Certification and Chain-of-Custody (10/14)

Unless otherwise indicated in the contract under section 7 – Other Conditions of the Sale Specific Conditions & Requirements, the area encompassed by this timber sale is certified to the standards of the Forest Stewardship Council (FSC) - Certificate #SCS-FM/COC-00090N and the Sustainable Forestry Initiative (SFI) - Certificate # NSF-SFIS-5Y031-SF5. Forest products from this sale may be delivered to the mill as "FSC 100% and / or SFI certified" as long as the contractor hauling the forest products is chain-of-custody (COC) certified or covered under a COC certificate from the destination mill. The purchaser is responsible for maintaining COC after leaving the sale area.

12. Good Neighbor Authority (GNA) Requirements (7/16)

If the name of this timber sales contains the acronym GNA, it is authorized by the Good Neighbor Authority (GNA) and covered by various agreements between the U.S. Forest Service and the State. The timber sale occurs on federal land and the following conditions apply:

GNA contracts on US Forest Service land will not be awarded to purchasers on the Federal list of excluded parties. The System for Award Management (SAM) will be checked for active excluded parties prior to award of contract. In addition, the Bidder to whom award is made must complete an Assurance Regarding Felony Conviction or Tax Delinquent Status for Corporate Applicants (AD-3031).

13. Good Neighbor Authority (GNA) Requirements, con't (9/16)

Bidder certifies, by signing this bid form, that to the best of Bidder's knowledge that the following representations are accurate and complete.

a. That the Bidder and its principals are not presently debarred, suspended, proposed for debarment, declared ineligible, or voluntary excluded from timber sales (covered transactions) by any Federal department or agency.

b. That the Bidder and its principals have not within a 3-year period preceding this bid been convicted of or had a civil judgment rendered against them for commission of fraud or a criminal offense in connection with obtaining, attempting to obtain, or performing a public (Federal, State, or local) transaction or contract under a public transaction; violation of Federal or State antitrust statutes or commission of embezzlement, theft, forgery, bribery, falsification or destruction of records, making false statements, or receiving stolen property.

c. That the Bidder and its principals are not presently indicted for or otherwise criminally or civilly charged by a governmental entity (Federal, State, or local) with commission of any of the offenses enumerated in paragraph b of this certification.

d. That the Bidder and its principals have not within a 3-year period preceding this bid had one or more public transactions (Federal, State, or local) terminated for breach or default of a timber or forest product contract.

Bidders that cannot certify this requirement, in whole or in part, shall submit an explanation with their bid.

KEITH CREAGH
Director

TIMBER SALE INFORMATION

Cyclone Aspen (52-107-17)

Cheboygan County (Advertised Price \$94,160.80)

SALE NOTE: A recreation site such as a trail, pathway, or campground is within the sale area or the vicinity. Certain restrictions/specifications may be applicable including time restrictions.

A timber sale contract for this lump sum, sealed bid timber sale will be awarded to the responsible bidder offering the highest sealed bid price. Bids must be at or above the following advertised price for each species:

<u>PRODUCTS & SPECIES</u>	<u>ESTIMATED UNITS*</u>	<u>ADVERTISED PRICE</u>
Sawtimber		
B. T. Aspen	421.50 MBF	\$ 55.00 / MBF
Red Maple	36.80 MBF	\$ 150.00 / MBF
Red Pine	9.30 MBF	\$ 109.00 / MBF
White Pine	2.00 MBF	\$ 62.00 / MBF
Pulpwood		
B. T. Aspen	2,187.00 Cords	\$ 20.00 / Cord
Balsam Fir	9.00 Cords	\$ 21.90 / Cord
Jack Pine	238.00 Cords	\$ 25.15 / Cord
Red Maple	513.00 Cords	\$ 22.60 / Cord
Red Pine	16.00 Cords	\$ 46.55 / Cord
White Pine	66.00 Cords	\$ 31.20 / Cord

* The total volume is statistically estimated within plus (+) or minus (-) 14.85 percent. The estimated units are final and not subject to adjustment. Prospective bidders are urged to examine this timber and to make their own estimates of quantity and quality.

BOND AND PAYMENT SCHEDULE:

1. A bond in the amount of \$4,708.00 to insure faithful performance of the conditions of the contract will be deposited by the successful bidder within 21 days of the sale award.
2. Cutting in any sale or unit without the required advance payment would be considered a trespass.
3. Total payment must be paid in advance or according to the following schedule:
 - (a) Ten percent (10%) of the sale value must be paid within 21 days of the sale award.
 - (b) The 10% down payment will be credited towards the first unit cut.
4. If no cutting takes place, the 10% down payment will not be refunded.
5. Operations on the contract issued will terminate on 12/31/2020.

Description of Timber by Payment Unit (PU)

PU	MARKET GROUP	PRODUCT	QUANTITY	UNIT	ACRES	ADVERTISE PRICE
1	B. T. Aspen	Sawtimber	14.7	MBF	19.3	\$11,727.10
	Red Maple		7.1	MBF		
	Red Pine		9.3	MBF		
	B. T. Aspen	Pulpwood	239.0	Cords		
	Jack Pine		67.0	Cords		
	<i>Jack Pine</i>	<i>Sawtimber</i>	3.5	<i>MBF</i>		
	<i>Jack Pine</i>	<i>Pulpwood</i>	60.0	<i>Cords</i>		
	Red Maple		70.0	Cords		
	Red Pine		11.0	Cords		
	White Pine		9.0	Cords		
	2	B. T. Aspen	Sawtimber	24.0		
Red Maple			19.6	MBF		
White Pine			2.0	MBF		
B. T. Aspen		Pulpwood	173.0	Cords		
Jack Pine			23.0	Cords		
<i>Jack Pine</i>			23.0	<i>Cords</i>		
Red Maple			163.0	Cords		
Red Pine			5.0	Cords		
White Pine			11.0	Cords		
3		B. T. Aspen	Sawtimber	28.7	MBF	16.0
	B. T. Aspen	Pulpwood	396.0	Cords		
	Jack Pine		87.0	Cords		
	<i>Jack Pine</i>		87.0	<i>Cords</i>		
	White Pine		9.0	Cords		
4	B. T. Aspen	Sawtimber	172.2	MBF	32.0	\$28,103.30
	Red Maple		4.9	MBF		
	B. T. Aspen	Pulpwood	671.0	Cords		
	Balsam Fir		4.0	Cords		
	Jack Pine		30.0	Cords		
	<i>Jack Pine</i>		30.0	<i>Cords</i>		
	Red Maple		136.0	Cords		
	White Pine		18.0	Cords		
5	B. T. Aspen	Sawtimber	181.9	MBF	33.8	\$29,680.85
	Red Maple		5.2	MBF		
	B. T. Aspen	Pulpwood	708.0	Cords		
	Balsam Fir		5.0	Cords		
	Jack Pine		31.0	Cords		
	<i>Jack Pine</i>		31.0	<i>Cords</i>		
	Red Maple		144.0	Cords		
	White Pine		19.0	Cords		
	TOTAL:			469.6		
TOTAL:			3,029.0	Cords		

Sale Specific Conditions & Requirements

Sale Name: Cyclone Aspen

Sale Number: 52-107-17 Seq#: 1

1 - Sale Area

1.2 - Boundaries

1.2.1 - Painted boundaries (1/14)

The sale boundary and Payment Unit boundaries are marked and identified by blue, red and yellow paint. Exterior sale boundary lines against private property are marked with blue paint. Exterior sale boundary lines against state are marked with red paint. Interior Payment Unit boundaries are marked with yellow paint. The painted boundary line trees are not Included Timber and are to be protected. Yellow painted trees designating an interior Payment Unit boundary are only to be cut when all surrounding Payment Units have been paid.

2 - Timber Specifications

2.1 - Included Timber

2.1.1 - Clearcut unit(s) with unmerchantable trees (6/14)

Within Payment Unit(s) 1 - 5, cut all trees that are two (2) inches or more at DBH, except oak and green painted trees.

3 - Payments

3.3 - Pre-measured Sales

3.3.4 - Dividing payment units (7/14)

Payment Unit(s) 1 - 5 may be divided at the request of the Purchaser and upon approval of the Unit Manager. Dividing Payment Units is a contract modification which requires a Timber Sale Contract Supplement. There will be only one division per Payment Unit.

3.4 - Damaged Timber

3.4.1 - Damaged timber (6/14)

General Condition and Requirement 3.4 Damaged Timber, defines liquidated damages for undesignated live merchantable trees which are cut or injured.

No damage is acceptable to merchantable trees. Within the sale area, if more than 5% of trees (> 4.5" DBH) within a specified area of the sale are damaged, liquidated damages will be assessed for all trees damaged. Rates will be in accordance with General Condition and Requirement 3.4 Damaged Timber.

4 - Transportation

4.1 - Construction

4.1.3 - Slash and earthen piles (8/04)

Piles or windrows of earth along roads and landings that have been widened or constructed shall be leveled. Slash from road maintenance or construction, including stumps, shall be dispersed throughout the sale.

4.2 - Maintenance

4.2.5 - Two wheel drive condition (2/04)

All existing trail roads on and adjacent to the sale area must be passable by two-wheel drive traffic for the duration of the sale.

5 - Operations

5.1 - Notification

5.1.1 - Pre-sale conference (10/16)

A pre-sale conference on site between the Purchaser and sale administrator is required prior to beginning any operations to determine landing and road locations. The Unit Manager or his/her representative must be contacted at least 3 days in

advance to schedule the conference.

5.1.6 - Utility R.O.W. (1/15)

It is the responsibility of the Purchaser to obtain permission from the utility company to utilize the power line R.O.W. for operations.

5.2 - Conduct of Operations

5.2.2 - Hazard Trees/Snags

5.2.2.1 - Den trees (10/16)

Obvious hollow and/or den trees shall be protected and left standing unless they are a safety hazard.

5.2.3 - Operating Restrictions

5.2.3.4 - Oak wilt restriction (4/17)

Within Payment Unit(s) 1 - 5, unless changed by written agreement, cutting, skidding, and hauling are not permitted during the period of April 15 to July 15. This is necessary to reduce the spread of oak wilt. For more information, contact the Unit Manager or his/her representative.

5.2.39 - ORV trail/route protection (12/12)

The MCCCT trail is shown on the Timber Sale Map. Do not cut trees or damage posts with orange ORV markers. All stumps within 5 feet of the trail must be cut flush with the ground. Maintain a 20 foot wide slash, debris, and rut free zone daily using the MCCCT trail as the centerline. Do not run equipment down the ORV trail or route.

5.4 - Soil Protection

5.4.1 - Rutting restriction, general (7/16)

Operations are to cease immediately if equipment and weather conditions result in rutting of roads and/or skid trails which is 12 inches or greater in depth and 50 feet in length. The Unit Manager or his/her representative may restrict hauling and/or skidding if ruts exceed the specified depth. With the Unit Manager or his/her representative's approval, the Purchaser may return to the area when the risk of rutting has decreased.

5.8 - Protection of Endangered Species

5.8.5 - Protection of raptor nests (3/13)

All trees with raptor nests will be protected if found during harvesting operations. Notification will be made to the Unit Manager or his/her representative who will notify the Wildlife Biologist so an on-site evaluation and recommendation can be made, if necessary.

6 - Safety and Fire Prevention

6.2 - Signing

6.2.3 - Recreational trail posting (2/10)

The Purchaser is responsible for posting and maintaining caution signs on The MCCCT trail prior to beginning operations. The trail must be posted at appropriate distances from the sale area to warn of logging activity and truck traffic at both ends of the trail. Signs must be removed when harvest operations are suspended or completed. The Purchaser will provide these signs.



TIMBER SALE MAP

This information provided by authority of Par 525, 1994 PA 451, as amended.

Forest Management Unit Indian River FRD		County Cheboygan	Mapped By Harig, S. Schanz, B.	Date 07/31/2017	Page 1	of 1
Township 35N	Range 02W	Section(s) and Subdivision(s) Sec 6; S1/2 NW, S1/2 NE, NENE Sec 5; S1/2 NW, NESW		Scale 1:15,840		

Cover Type

A = Aspen	H = Hemlock	N = Marsh	U = Upland Brush
B = Paper Birch	J = Jack Pine	O = Oak	UM = Upland Mixed
C = Cedar	L = Lowland Brush	P = Lowland Poplar	V = Bog or Marsh
D = Treed Bog	LM = Lowland Mixed	Q = Mixed Swamp Conifer	W = White Pine
E = Swamp Hdwoods	M = Mpl, Bch, Bich	R = Red Pine	X = Non Stocked
F = Spruce Fir	MC = Mixed Conifer	S = Black Spruce	Z = Water
G = Grass	MD = Mixed Deciduous	T = Tamarack	

Density

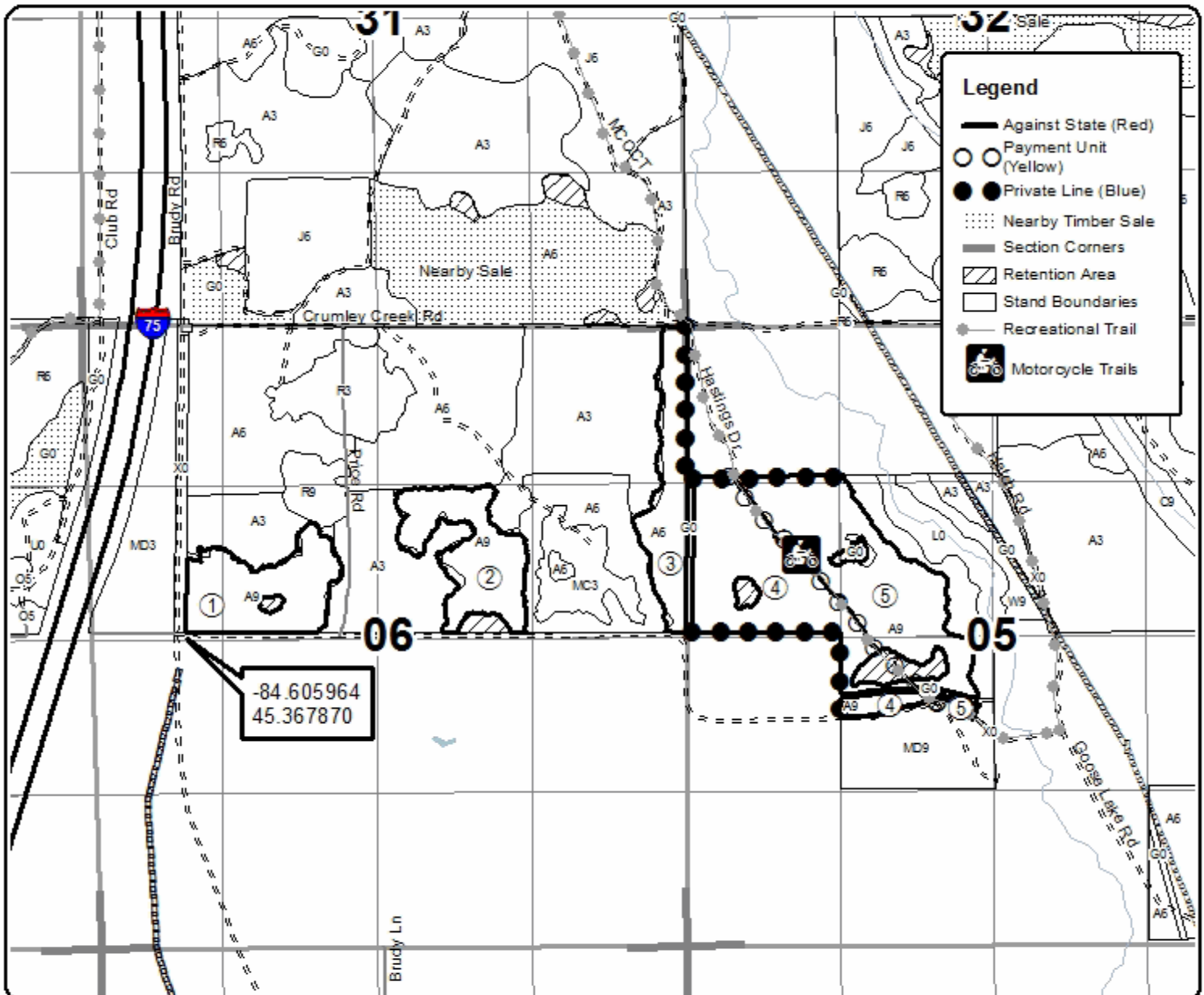
0 = Non Stocked	5 = Pole Timber Medium
1 = Seeding Sapling Poor	6 = Pole Timber Well
2 = Seeding Sapling Medium	7 = Saw Timber Poor
3 = Seeding Sapling Well	8 = Saw Timber Medium
4 = Pole Timber Poor	9 = Saw Timber Well

PU	Acres	PU	Acres
1	19.3	4	32.0
2	18.5	5	33.8
3	16.0		

Cyclone Aspen

Compartment 169

119.6 Acres



TIMBER SALE INFORMATION

Tilhorn Mix (52-109-17)

Cheboygan County (Advertised Price \$101,764.55)

A timber sale contract for this lump sum, sealed bid timber sale will be awarded to the responsible bidder offering the highest sealed bid price. Bids must be at or above the following advertised price for each species:

<u>PRODUCTS & SPECIES</u>	<u>ESTIMATED UNITS*</u>		<u>ADVERTISED PRICE</u>
Sawtimber			
Mixed Aspen	217.40	MBF	\$ 55.00 / MBF
Mixed Spruce	36.00	MBF	\$ 83.00 / MBF
N. White Cedar	152.60	MBF	\$ 38.00 / MBF
Paper Birch	44.90	MBF	\$ 58.00 / MBF
Red Maple	101.80	MBF	\$ 150.00 / MBF
Red Pine	81.70	MBF	\$ 109.00 / MBF
White Pine	24.00	MBF	\$ 62.00 / MBF
Pulpwood			
Balsam Fir	82.00	Cords	\$ 21.90 / Cord
Mixed Aspen	592.00	Cords	\$ 20.00 / Cord
Mixed Hardwood	693.00	Cords	\$ 22.60 / Cord
Mixed Spruce	172.00	Cords	\$ 41.10 / Cord
N. White Cedar	599.00	Cords	\$ 18.95 / Cord
Red Pine	92.00	Cords	\$ 46.55 / Cord
Tamarack	8.00	Cords	\$ 20.00 / Cord
White Pine	19.00	Cords	\$ 31.20 / Cord

* The total volume is statistically estimated within plus (+) or minus (-) 13.30 percent. The estimated units are final and not subject to adjustment. Prospective bidders are urged to examine this timber and to make their own estimates of quantity and quality.

BOND AND PAYMENT SCHEDULE:

1. A bond in the amount of \$5,088.00 to insure faithful performance of the conditions of the contract will be deposited by the successful bidder within 21 days of the sale award.
2. Cutting in any sale or unit without the required advance payment would be considered a trespass.
3. Total payment must be paid in advance or according to the following schedule:
 - (a) Ten percent (10%) of the sale value must be paid within 21 days of the sale award.
 - (b) The 10% down payment will be credited towards the first unit cut.
4. If no cutting takes place, the 10% down payment will not be refunded.
5. Operations on the contract issued will terminate on 12/31/2020.

Description of Timber by Payment Unit (PU)

PU	MARKET GROUP	PRODUCT	QUANTITY	UNIT	ACRES	ADVERTISE PRICE			
1	Mixed Aspen	Sawtimber	60.4	MBF	54.3	\$44,875.60			
	<i>B. T. Aspen</i>		7.9	<i>MBF</i>					
	<i>Quaking Aspen</i>		52.5	<i>MBF</i>					
	Mixed Spruce		15.3	MBF					
	<i>Black Spruce</i>		10.0	<i>MBF</i>					
	<i>White Spruce</i>		5.3	<i>MBF</i>					
	N. White Cedar		66.4	MBF					
	Paper Birch		19.7	MBF					
	Red Maple		84.9	MBF					
	Red Pine		4.4	MBF					
	White Pine		13.3	MBF					
	Balsam Fir		Pulpwood	65.0			Cords		
	<i>Balsam Fir</i>			<i>Sawtimber</i>			1.0	<i>MBF</i>	
	<i>Balsam Fir</i>	<i>Pulpwood</i>		63.0			<i>Cords</i>		
	Mixed Aspen	176.0		Cords					
	<i>B. T. Aspen</i>	61.0		<i>Cords</i>					
	<i>Balsam Poplar</i>	6.0		<i>Cords</i>					
	<i>Quaking Aspen</i>	109.0		<i>Cords</i>					
	Mixed Hardwood	440.0		Cords					
	<i>Beech</i>	2.0		<i>Cords</i>					
	<i>Black Ash</i>	8.0		<i>Cords</i>					
	<i>Paper Birch</i>	83.0	<i>Cords</i>						
	<i>Red Maple</i>	347.0	<i>Cords</i>						
	Mixed Spruce	82.0	Cords						
	<i>Black Spruce</i>	79.0	<i>Cords</i>						
	<i>White Spruce</i>	3.0	<i>Cords</i>						
	N. White Cedar	211.0	Cords						
	Red Pine	1.0	Cords						
	Tamarack	6.0	Cords						
	White Pine	5.0	Cords						
	2	Mixed Aspen	Sawtimber	8.2			MBF	9.3	\$11,722.05
		<i>B. T. Aspen</i>		8.2			<i>MBF</i>		
		Red Maple		2.2			MBF		
Red Pine		64.2	MBF						
Mixed Aspen		Pulpwood	55.0	Cords					
<i>B. T. Aspen</i>			42.0	<i>Cords</i>					
<i>Quaking Aspen</i>			13.0	<i>Cords</i>					
Mixed Hardwood			29.0	Cords					
<i>Paper Birch</i>			6.0	<i>Cords</i>					
<i>Red Maple</i>			23.0	<i>Cords</i>					
Red Pine	47.0		Cords						
3	Mixed Aspen	Sawtimber	72.7	MBF	33.7	\$27,848.25			
	<i>B. T. Aspen</i>		29.0	<i>MBF</i>					
	<i>Balsam Poplar</i>		11.3	<i>MBF</i>					
	<i>Quaking Aspen</i>		32.4	<i>MBF</i>					
	Mixed Spruce		20.2	MBF					
	<i>White Spruce</i>		20.2	<i>MBF</i>					
	N. White Cedar		85.3	MBF					
	Paper Birch		19.4	MBF					
	Red Maple		6.1	MBF					
	Balsam Fir		Pulpwood	16.0			Cords		
	<i>Balsam Fir</i>			16.0			<i>Cords</i>		
	Mixed Aspen			184.0			Cords		
	<i>B. T. Aspen</i>		54.0	<i>Cords</i>					
	<i>Balsam Poplar</i>		7.0	<i>Cords</i>					
	<i>Quaking Aspen</i>		123.0	<i>Cords</i>					

Description of Timber by Payment Unit (PU), con't

PU	MARKET GROUP	PRODUCT	QUANTITY	UNIT	ACRES	ADVERTISE PRICE
3 con't	Mixed Hardwood	Pulpwood	90.0	Cords		
	<i>Paper Birch</i>		62.0	<i>Cords</i>		
	<i>Red Maple</i>		28.0	<i>Cords</i>		
	Mixed Spruce		85.0	Cords		
	<i>Black Spruce</i>		5.0	<i>Cords</i>		
	<i>White Spruce</i>		80.0	<i>Cords</i>		
	N. White Cedar		387.0	Cords		
4	Red Pine	Sawtimber	4.8	MBF	12.3	\$2,385.20
	Red Pine	Pulpwood	40.0	Cords		
5	Mixed Aspen	Sawtimber	76.1	MBF	19.6	\$14,933.45
	<i>B. T. Aspen</i>		65.9	<i>MBF</i>		
	<i>Quaking Aspen</i>		10.2	<i>MBF</i>		
	Mixed Spruce		0.5	MBF		
	<i>Black Spruce</i>		0.5	<i>MBF</i>		
	N. White Cedar		0.9	MBF		
	Paper Birch		5.8	MBF		
	Red Maple		8.6	MBF		
	Red Pine		8.3	MBF		
	White Pine		10.7	MBF		
	Balsam Fir	Pulpwood	1.0	Cords		
	<i>Balsam Fir</i>		1.0	<i>Cords</i>		
	Mixed Aspen		177.0	Cords		
	<i>B. T. Aspen</i>		133.0	<i>Cords</i>		
	<i>Quaking Aspen</i>		44.0	<i>Cords</i>		
	Mixed Hardwood		134.0	Cords		
	<i>Sugar Maple</i>	<i>Sawtimber</i>	0.5	<i>MBF</i>		
	<i>Paper Birch</i>	<i>Pulpwood</i>	50.0	<i>Cords</i>		
	<i>Red Maple</i>		81.0	<i>Cords</i>		
	<i>Sugar Maple</i>		2.0	<i>Cords</i>		
	Mixed Spruce		5.0	Cords		
	<i>Black Spruce</i>		5.0	<i>Cords</i>		
	N. White Cedar		1.0	Cords		
	Red Pine		4.0	Cords		
	Tamarack		2.0	Cords		
	White Pine		14.0	Cords		
	TOTAL:			658.4		
TOTAL:			2,257.0	Cords		

Sale Specific Conditions & Requirements

Sale Name: Tilhorn Mix

Sale Number: 52-109-17 Seq#: 1

1 - Sale Area

1.2 - Boundaries

1.2.1 - Painted boundaries (1/14)

The sale boundary is marked and identified by blue and red paint. Exterior sale boundary lines against private property are marked with blue paint. Exterior sale boundary lines against state are marked with red paint. The painted boundary line trees are not Included Timber and are to be protected.

2 - Timber Specifications

2.1 - Included Timber

2.1.1 - Clearcut unit(s) with unmerchantable trees (6/14)

Within Payment Unit(s) 1 and 3, cut all trees that are four (4) inches or more at DBH, except oak.

Within Payment Unit(s) 5, cut all trees that are two (2) inches or more at DBH, except oak.

2.1.3 - Cut tree marked unit(s) (12/08)

Within Payment Unit(s) 4, all trees are designated for cutting when marked with orange paint above and below stump height, regardless of merchantability.

2.1.7 - Leave tree marked unit(s) (6/14)

Within Payment Unit(s) 2, cut all trees that are two (2) inches or more at DBH, except oak and trees marked with green paint above and below stump height.

3 - Payments

3.3 - Pre-measured Sales

3.3.4 - Dividing payment units (7/14)

Payment Unit(s) 1 - 5 may be divided at the request of the Purchaser and upon approval of the Unit Manager. Dividing Payment Units is a contract modification which requires a Timber Sale Contract Supplement. There will be only one division per Payment Unit.

4 - Transportation

4.1 - Construction

4.1.4 - Timber removed for construction (12/09)

Trees cut or damaged in the process of pre-approved road, landing or skid trail construction will be decked in an area separate from other Designated Timber and not removed until measured by the sale administrator. Payment will be made at the specified Purchase Unit Price.

4.1.6 - Road construction (1/09)

Construction of new roads or improvements of existing roads shall be done in such a way as to minimize the environmental and visual impacts. Merchantable trees shall be cut and utilized unless otherwise directed. Non-merchantable trees shall be severed and laid flat on the ground. Slash shall be scattered, and not left in windrows and kept a minimum of 10 feet back from the road edge. Stumps shall be set upright, not left on edge, and be moved at least 10 feet away from the road edge. Disturbed soil shall be feathered into the woods and not left in berms or windrows.

4.1.7 - Road closure (10/11)

All new roads built into the sale must be blocked to vehicle traffic upon completion of the sale. In general, this will require constructing a four (4') foot high berm of stumps and logs covered with earth. All stumps from road building and landing construction must be reserved to block any newly constructed roads upon completion of the sale. These stumps must be scattered along the road system to prohibit vehicular movement. Contact the sale administrator for specific details of design and placement.

4.2 - Maintenance

4.2.5 - Two wheel drive condition (2/04)

All existing trail roads on and adjacent to the sale area must be passable by two-wheel drive traffic for the duration of the sale.

5 - Operations

5.1 - Notification

5.1.1 - Pre-sale conference (10/16)

A pre-sale conference on site between the Purchaser and sale administrator is required prior to beginning any operations to determine landing and road locations. The Unit Manager or his/her representative must be contacted at least 3 days in advance to schedule the conference.

5.2 - Conduct of Operations

5.2.2 - Hazard Trees/Snags

5.2.2.1 - Den trees (10/16)

Obvious hollow and/or den trees shall be protected and left standing unless they are a safety hazard.

5.2.17 - Crane Mats/Timber Mats (9/17)

Some roads or skid trails may require extra protection such as that afforded by Crane Mats/Timber Mats. If available, Crane Mats/Timber Mats may be borrowed from the DNR and are located at the Marquette ICC, the Newberry Field Office and the Grayling Field Office. Contact the sale administrator for specific details. A Timber Sale Contract Supplement will be used to document the Purchaser's use of the DNR's Crane Mats/Timber Mats. It is the responsibility of the Purchaser to contact the sale administrator to schedule pick up and drop off. In addition, all mats must be cleaned prior to drop off. A charge of \$350.00 will be assessed for all damaged or non-returned mats. Damage is defined as misuse resulting in three or more broken cants.

5.2.22 - Operating Caution

5.2.22.1 - Operating caution (6/11)

It is recommended, but not required, that within Payment Unit(s) 1, 2, 3 and 5, cutting, skidding, and hauling occur during dry summer or frozen winter conditions. The reason for the recommendation is because of potentially wet soils in the sale.

5.4 - Soil Protection

5.4.1 - Rutting restriction, general (7/16)

Operations are to cease immediately if equipment and weather conditions result in rutting of roads and/or skid trails which is 12 inches or greater in depth and 50 feet in length. The Unit Manager or his/her representative may restrict hauling and/or skidding if ruts exceed the specified depth. With the Unit Manager or his/her representative's approval, the Purchaser may return to the area when the risk of rutting has decreased.

5.8 - Protection of Endangered Species

5.8.5 - Protection of raptor nests (3/13)

All trees with raptor nests will be protected if found during harvesting operations. Notification will be made to the Unit Manager or his/her representative who will notify the Wildlife Biologist so an on-site evaluation and recommendation can be made, if necessary.

7 - Other Conditions

7.2 - Extensions

7.2.5 - Weather related extension (1/13)

If weather conditions during the operating period of this contract prevent harvesting, this sale may qualify for a weather related extension. If approved, the normal extension fee would be waived. To qualify, there must be a documented attempt each year to harvest in the difficult portion of the sale.



TIMBER SALE MAP

This information provided by authority of Part 525, 1994 PA 451, as amended.

Forest Management Unit Indian River FRD	County Cheboygan	Mapped By Harig, S. Schanz, B.	Date 08/01/2017	Page 1	of 3
Township 38N	Range 03W	Section(s) and Subdivision(s) Parts of Sections 10, 13, 14, 15 and 16.	Scale 1:15,840		
Cruised By Contractors					

Cover Type

A = Aspen	H = Hemlock	N = Marsh	U = Upland Brush
B = Paper Birch	J = Jack Pine	O = Oak	UM = Upland Mixed
C = Cedar	L = Lowland Brush	P = Lowland Poplar	V = Bog or Marsh
D = Treed Bog	LM = Lowland Mixed	Q = Mixed Swamp Conifer	W = White Pine
E = Swamp Hdwoods	M = Mpl, Bch, Brch	R = Red Pine	X = Non Stocked
F = Spruce Fir	MC = Mixed Conifer	S = Black Spruce	Z = Water
G = Grass	MD = Mixed Deciduous	T = Tamarack	

Density

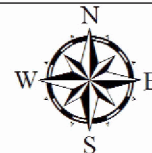
0 = Non Stocked	5 = Pole Timber Medium
1 = Seedling Sapling Poor	6 = Pole Timber Well
2 = Seedling Sapling Medium	7 = Saw Timber Poor
3 = Seedling Sapling Well	8 = Saw Timber Medium
4 = Pole Timber Poor	9 = Saw Timber Well

PU	Acres	PU	Acres
1	54.3	4	12.3
2	9.3	5	19.6
3	33.7		

Tilhorn Mix

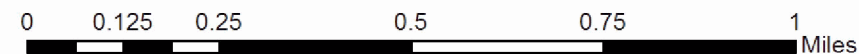
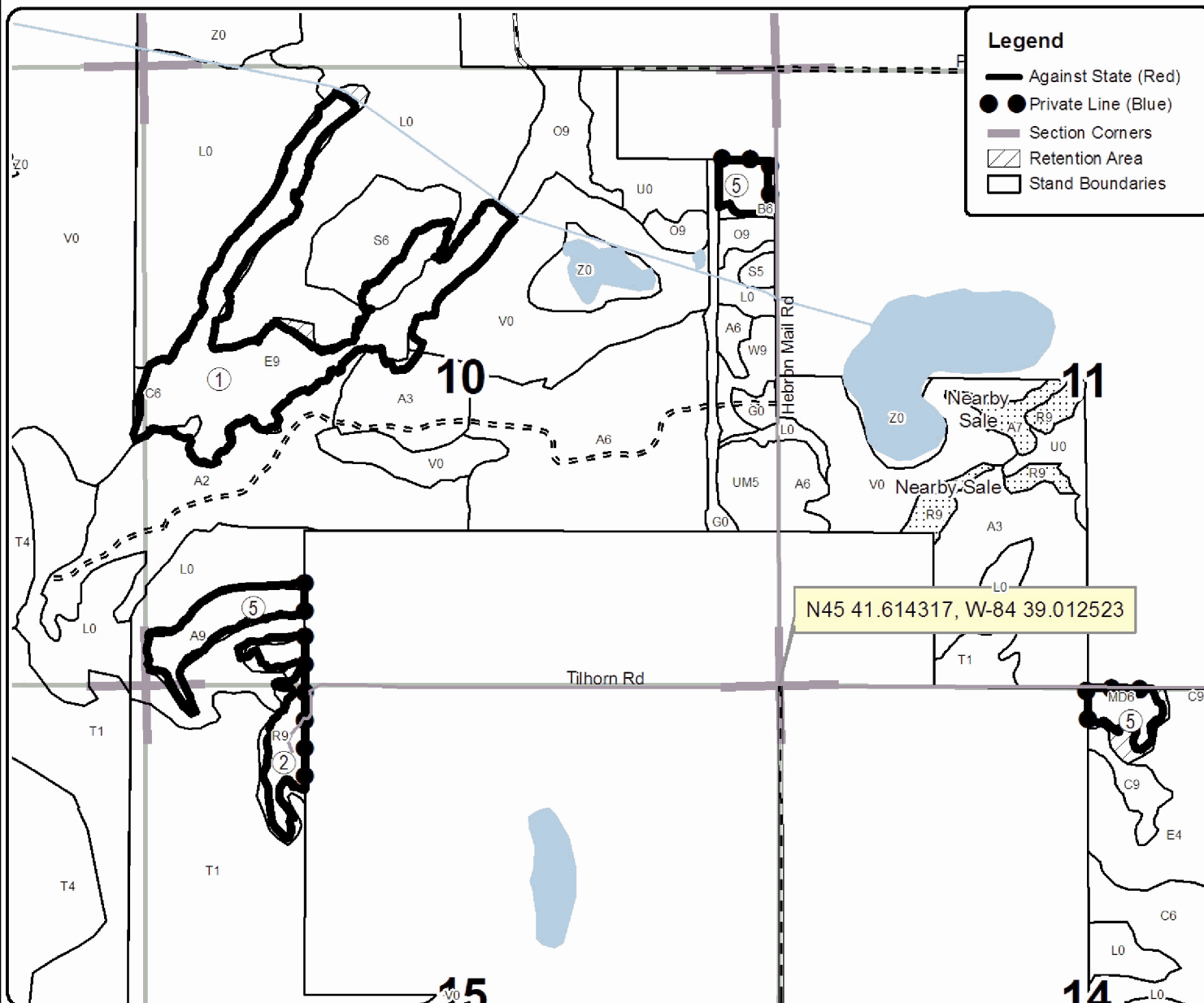
Compartment 163

129.2 Acres



Legend

- Against State (Red)
- Private Line (Blue)
- Section Corners
- Retention Area
- Stand Boundaries





TIMBER SALE MAP

This information provided by authority of Part 525, 1994 PA 451, as amended.

Forest Management Unit Indian River FRD		County Cheboygan	Mapped By Harig, S. Schanz, B.	Date 08/01/2017	Page 2	of 3
Township 38N	Range 03W	Section(s) and Subdivision(s) Parts of Sections 10, 13, 14, 15 and 16.		Scale 1:15,840		

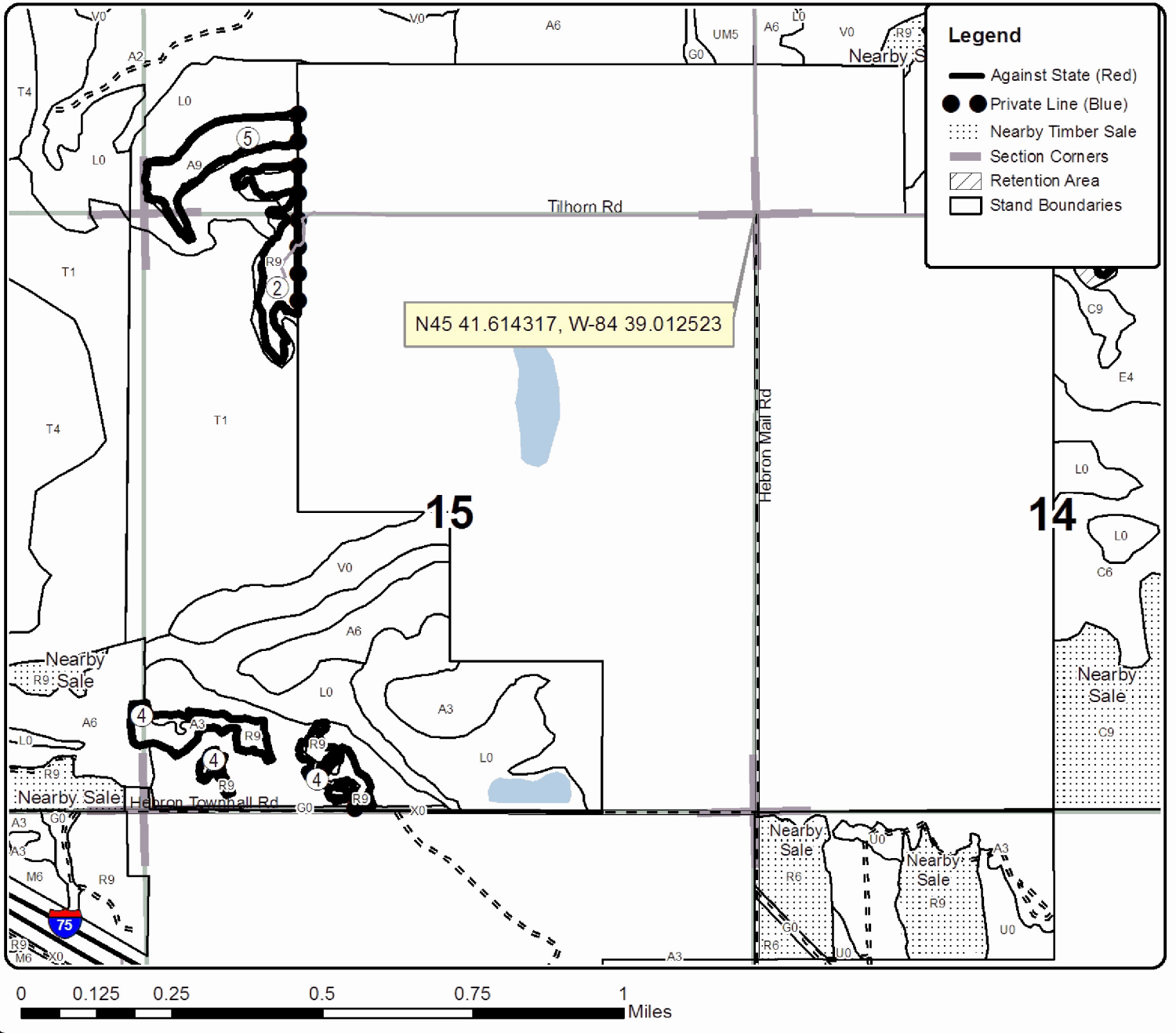
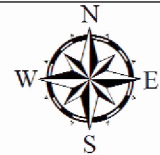
Cover Type				Density	
A = Aspen	H = Hemlock	N = Marsh	U = Upland Brush	0 = Non Stocked	5 = Pole Timber Medium
B = Paper Birch	J = Jack Pine	O = Oak	UM = Upland Mixed	1 = Seedling Sapling Poor	6 = Pole Timber Well
C = Cedar	L = Lowland Brush	P = Lowland Poplar	V = Bog or Marsh	2 = Seedling Sapling Medium	7 = Saw Timber Poor
D = Treed Bog	LM = Lowland Mixed	Q = Mixed Swamp Conifer	W = White Pine	3 = Seedling Sapling Well	8 = Saw Timber Medium
E = Swamp Hdwoods	M = Mpl, Bch, Brch	R = Red Pine	X = Non Stocked	4 = Pole Timber Poor	9 = Saw Timber Well
F = Spruce Fir	MC = Mixed Conifer	S = Black Spruce	Z = Water		
G = Grass	MD = Mixed Deciduous	T = Tamarack			

PU	Acres	Pu	Acres
1	54.3	4	12.3
2	9.3	5	19.6
3	33.7		

Tilhorn Mix

Compartment 163

129.2 Acres





TIMBER SALE MAP

This information provided by authority of Part 525, 1994 PA 451, as amended.

Sale Number	Year
52-109	17

Forest Management Unit Indian River FRD	County Cheboygan	Mapped By Harig, S. Schanz, B.	Date 08/01/2017	Page 3	of 3
Township 38N	Range 03W	Section(s) and Subdivision(s) Parts of Sections 10, 13, 14, 15 and 16.	Scale 1:15,840		

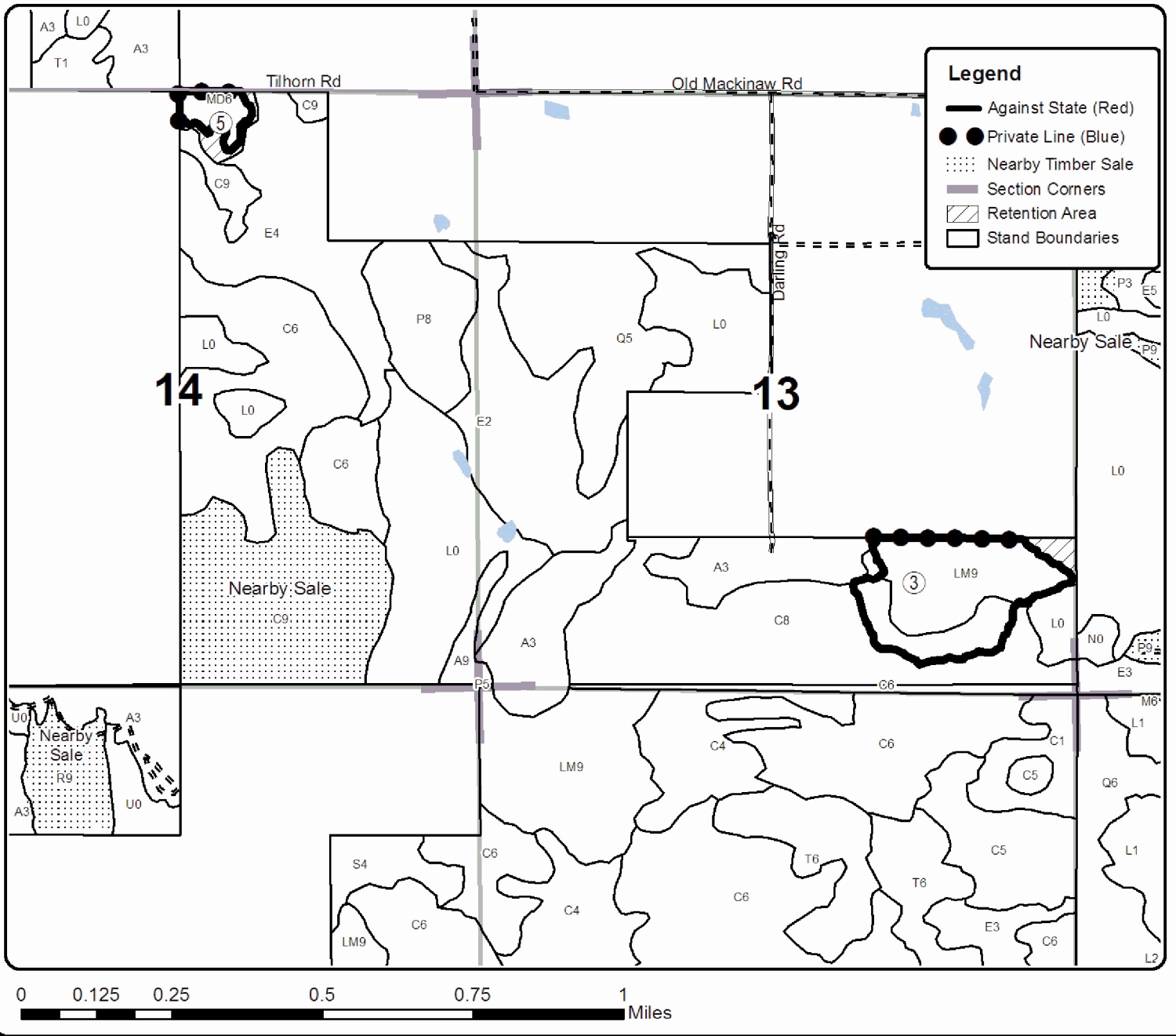
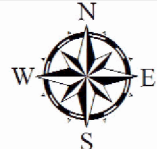
Cover Type				Density	
A = Aspen	H = Hemlock	N = Marsh	U = Upland Brush	0 = Non Stocked	5 = Pole Timber Medium
B = Paper Birch	J = Jack Pine	O = Oak	UM = Upland Mixed	1 = Seedling Sapling Poor	6 = Pole Timber Well
C = Cedar	L = Lowland Brush	P = Lowland Poplar	V = Bog or Marsh	2 = Seedling Sapling Medium	7 = Saw Timber Poor
D = Treed Bog	LM = Lowland Mixed	Q = Mixed Swamp Conifer	W = White Pine	3 = Seedling Sapling Well	8 = Saw Timber Medium
E = Swamp Hdwoods	M = Mpl, Bch, Brch	R = Red Pine	X = Non Stocked	4 = Pole Timber Poor	9 = Saw Timber Well
F = Spruce Fir	MC = Mixed Conifer	S = Black Spruce	Z = Water		
G = Grass	MD = Mixed Deciduous	T = Tamarack			

PU	Acres	Pu	Acres
1	54.3	4	12.3
2	9.3	5	19.6
3	33.7		

Tilhorn Mix

Compartment 163

129.2 Acres



TIMBER SALE INFORMATION

Hebron Mix (52-110-17)

Cheboygan County (Advertised Price \$121,278.70)

A timber sale contract for this lump sum, sealed bid timber sale will be awarded to the responsible bidder offering the highest sealed bid price. Bids must be at or above the following advertised price for each species:

<u>PRODUCTS & SPECIES</u>	<u>ESTIMATED UNITS*</u>	<u>ADVERTISED PRICE</u>
Sawtimber		
Mixed Aspen	179.10 MBF	\$ 55.00 / MBF
N. White Cedar	167.40 MBF	\$ 38.00 / MBF
Paper Birch	15.20 MBF	\$ 58.00 / MBF
Red Maple	25.70 MBF	\$ 150.00 / MBF
Red Pine	26.10 MBF	\$ 109.00 / MBF
Sugar Maple	46.10 MBF	\$ 289.00 / MBF
White Pine	27.70 MBF	\$ 58.00 / MBF
White Spruce	142.80 MBF	\$ 48.00 / MBF
Yellow Birch	9.00 MBF	\$ 151.00 / MBF
Pulpwood		
Balsam Fir	377.00 Cords	\$ 21.90 / Cord
Mixed Aspen	956.00 Cords	\$ 20.00 / Cord
Mixed Hardwood	473.00 Cords	\$ 22.60 / Cord
N. White Cedar	1,068.00 Cords	\$ 18.95 / Cord
Red Pine	14.00 Cords	\$ 46.55 / Cord
Tamarack	32.00 Cords	\$ 20.00 / Cord
White Pine	59.00 Cords	\$ 31.20 / Cord
White Spruce	314.00 Cords	\$ 41.10 / Cord

* The total volume is statistically estimated within plus (+) or minus (-) 12.90 percent. The estimated units are final and not subject to adjustment. Prospective bidders are urged to examine this timber and to make their own estimates of quantity and quality.

BOND AND PAYMENT SCHEDULE:

1. A bond in the amount of \$6,064.00 to insure faithful performance of the conditions of the contract will be deposited by the successful bidder within 21 days of the sale award.
2. Cutting in any sale or unit without the required advance payment would be considered a trespass.
3. Total payment must be paid in advance or according to the following schedule:
 - (a) Ten percent (10%) of the sale value must be paid within 21 days of the sale award.
 - (b) The 10% down payment will be credited towards the first unit cut.
4. If no cutting takes place, the 10% down payment will not be refunded.
5. Operations on the contract issued will terminate on 12/31/2020.

Description of Timber by Payment Unit (PU)

PU	MARKET GROUP	PRODUCT	QUANTITY	UNIT	ACRES	ADVERTISE PRICE
1	Mixed Aspen	Sawtimber	72.5	MBF	65.7	\$41,115.20
	<i>B. T. Aspen</i>		72.5	<i>MBF</i>		
	N. White Cedar		65.3	MBF		
	Paper Birch		4.9	MBF		
	Red Maple		9.4	MBF		
	Red Pine		10.7	MBF		
	White Spruce		65.7	MBF		
	Yellow Birch		3.6	MBF		
	Balsam Fir	Pulpwood	164.0	Cords		
	<i>Balsam Fir</i>	<i>Sawtimber</i>	6.4	<i>MBF</i>		
	<i>Balsam Fir</i>	<i>Pulpwood</i>	151.0	<i>Cords</i>		
	Mixed Aspen		373.0	Cords		
	<i>B. T. Aspen</i>		364.0	<i>Cords</i>		
	<i>Balsam Poplar</i>		9.0	<i>Cords</i>		
	Mixed Hardwood		76.0	Cords		
	<i>White Ash</i>	<i>Sawtimber</i>	1.8	<i>MBF</i>		
	<i>Paper Birch</i>	<i>Pulpwood</i>	32.0	<i>Cords</i>		
	<i>Red Maple</i>		25.0	<i>Cords</i>		
	<i>White Ash</i>		10.0	<i>Cords</i>		
	<i>Yellow Birch</i>		5.0	<i>Cords</i>		
	N. White Cedar		411.0	Cords		
	Red Pine		5.0	Cords		
	Tamarack		32.0	Cords		
	<i>Tamarack</i>	<i>Sawtimber</i>	5.1	<i>MBF</i>		
	<i>Tamarack</i>	<i>Pulpwood</i>	22.0	<i>Cords</i>		
	White Spruce		162.0	Cords		
	2	Mixed Aspen	Sawtimber	73.4		
<i>B. T. Aspen</i>			73.4	<i>MBF</i>		
N. White Cedar			76.8	MBF		
Paper Birch			6.7	MBF		
Red Maple			13.1	MBF		
Red Pine			15.0	MBF		
White Spruce			67.0	MBF		
Yellow Birch			4.9	MBF		
Balsam Fir		Pulpwood	177.0	Cords		
<i>Balsam Fir</i>		<i>Sawtimber</i>	8.8	<i>MBF</i>		
<i>Balsam Fir</i>		<i>Pulpwood</i>	159.0	<i>Cords</i>		
Mixed Aspen			429.0	Cords		
<i>B. T. Aspen</i>			417.0	<i>Cords</i>		
<i>Balsam Poplar</i>			12.0	<i>Cords</i>		
Mixed Hardwood			104.0	Cords		
<i>White Ash</i>		<i>Sawtimber</i>	2.4	<i>MBF</i>		
<i>Paper Birch</i>		<i>Pulpwood</i>	32.0	<i>Cords</i>		
<i>Red Maple</i>			46.0	<i>Cords</i>		
<i>White Ash</i>			15.0	<i>Cords</i>		
<i>Yellow Birch</i>			6.0	<i>Cords</i>		
N. White Cedar		508.0	Cords			
Red Pine		8.0	Cords			
White Spruce		128.0	Cords			
3	Mixed Aspen	Sawtimber	0.2	MBF	11.8	\$1,497.65
	<i>B. T. Aspen</i>		0.2	<i>MBF</i>		
	Paper Birch		0.3	MBF		
	Red Pine		0.4	MBF		
	Sugar Maple		0.1	MBF		
	White Pine		0.3	MBF		
	Mixed Aspen	Pulpwood	1.0	Cords		

Description of Timber by Payment Unit (PU), con't

PU	MARKET GROUP	PRODUCT	QUANTITY	UNIT	ACRES	ADVERTISE PRICE
3 con't	<i>B. T. Aspen</i>	<i>Pulpwood</i>	1.0	<i>Cords</i>		
	Mixed Hardwood		36.0	Cords		
	<i>Basswood</i>	<i>Sawtimber</i>	5.2	<i>MBF</i>		
	<i>Beech</i>		0.9	<i>MBF</i>		
	<i>Ironwood</i>		0.1	<i>MBF</i>		
	<i>White Ash</i>		0.1	<i>MBF</i>		
	<i>Basswood</i>	<i>Pulpwood</i>	3.0	<i>Cords</i>		
	<i>Beech</i>		7.0	<i>Cords</i>		
	<i>Ironwood</i>		1.0	<i>Cords</i>		
	<i>Paper Birch</i>		1.0	<i>Cords</i>		
	<i>Sugar Maple</i>		11.0	<i>Cords</i>		
	<i>White Ash</i>		1.0	<i>Cords</i>		
	Red Pine		1.0	Cords		
	White Pine		16.0	Cords		
4	Mixed Aspen	Sawtimber	9.7	MBF	14.7	\$9,930.95
	<i>B. T. Aspen</i>		9.7	<i>MBF</i>		
	N. White Cedar		25.3	MBF		
	Red Maple		2.0	MBF		
	White Pine		7.3	MBF		
	White Spruce		10.1	MBF		
	Balsam Fir	Pulpwood	23.0	Cords		
	<i>Balsam Fir</i>		23.0	<i>Cords</i>		
	Mixed Aspen		118.0	Cords		
	<i>B. T. Aspen</i>		109.0	<i>Cords</i>		
	<i>Balsam Poplar</i>		9.0	<i>Cords</i>		
	Mixed Hardwood		19.0	Cords		
	<i>Red Maple</i>		7.0	<i>Cords</i>		
	<i>Sugar Maple</i>		12.0	<i>Cords</i>		
	N. White Cedar		149.0	Cords		
	White Pine		4.0	Cords		
	White Spruce		24.0	Cords		
5	Mixed Aspen	Sawtimber	23.3	MBF	21.6	\$23,813.00
	<i>B. T. Aspen</i>		21.8	<i>MBF</i>		
	<i>Quaking Aspen</i>		1.5	<i>MBF</i>		
	Paper Birch		3.3	MBF		
	Red Maple		1.2	MBF		
	Sugar Maple		46.0	MBF		
	White Pine		20.1	MBF		
	Yellow Birch		0.5	MBF		
	Balsam Fir	Pulpwood	14.0	Cords		
	<i>Balsam Fir</i>	<i>Sawtimber</i>	3.3	<i>MBF</i>		
	<i>Balsam Fir</i>	<i>Pulpwood</i>	7.0	<i>Cords</i>		
	Mixed Aspen		35.0	Cords		
	<i>B. T. Aspen</i>		34.0	<i>Cords</i>		
	<i>Quaking Aspen</i>		1.0	<i>Cords</i>		
	Mixed Hardwood		239.0	Cords		
	<i>Basswood</i>	<i>Sawtimber</i>	2.4	<i>MBF</i>		
	<i>Beech</i>		8.1	<i>MBF</i>		
	<i>Basswood</i>	<i>Pulpwood</i>	4.0	<i>Cords</i>		
	<i>Beech</i>		35.0	<i>Cords</i>		
	<i>Ironwood</i>		9.0	<i>Cords</i>		
	<i>Paper Birch</i>		15.0	<i>Cords</i>		
	<i>Red Maple</i>		1.0	<i>Cords</i>		
	<i>Sugar Maple</i>		152.0	<i>Cords</i>		
	<i>Yellow Birch</i>		2.0	<i>Cords</i>		
	White Pine		39.0	Cords		

TOTAL:	639.1	MBF
--------	-------	-----

TOTAL:	3,295.0	Cords
--------	---------	-------

Sale Specific Conditions & Requirements

Sale Name: Hebron Mix

Sale Number: 52-110-17 Seq#: 1

1 - Sale Area

1.2 - Boundaries

1.2.1 - Painted boundaries (1/14)

The sale boundary and Payment Unit boundaries are marked and identified by blue, red and yellow paint. Exterior sale boundary lines against private property are marked with blue paint. Exterior sale boundary lines against state are marked with red paint. Interior Payment Unit boundaries are marked with yellow paint. The painted boundary line trees are not Included Timber and are to be protected. Yellow painted trees designating an interior Payment Unit boundary are only to be cut when all surrounding Payment Units have been paid.

2 - Timber Specifications

2.1 - Included Timber

2.1.1 - Clearcut unit(s) with unmerchantable trees (6/14)

Within Payment Unit(s) 1, 2 and 4, cut all trees that are four (4) inches or more at DBH.

Within Payment Unit(s) 5, cut all trees that are two (2) inches or more at DBH, except apple trees, which must be protected from harvest operations.

2.1.3 - Cut tree marked unit(s) (12/08)

Within Payment Unit(s) 3, all trees are designated for cutting when marked with orange paint above and below stump height, regardless of merchantability.

3 - Payments

3.3 - Pre-measured Sales

3.3.4 - Dividing payment units (7/14)

Payment Unit(s) 1, 2, 3, 4 and 5 may be divided at the request of the Purchaser and upon approval of the Unit Manager. Dividing Payment Units is a contract modification which requires a Timber Sale Contract Supplement. There will be only one division per Payment Unit.

4 - Transportation

4.1 - Construction

4.1.4 - Timber removed for construction (12/09)

Trees cut or damaged in the process of pre-approved road, landing or skid trail construction will be decked in an area separate from other Designated Timber and not removed until measured by the sale administrator. Payment will be made at the specified Purchase Unit Price.

4.1.6 - Road construction (1/09)

Construction of new roads or improvements of existing roads shall be done in such a way as to minimize the environmental and visual impacts. Merchantable trees shall be cut and utilized unless otherwise directed. Non-merchantable trees shall be severed and laid flat on the ground. Slash shall be scattered, and not left in windrows and kept a minimum of 10 feet back from the road edge. Stumps shall be set upright, not left on edge, and be moved at least 10 feet away from the road edge. Disturbed soil shall be feathered into the woods and not left in berms or windrows.

4.1.7 - Road closure (10/11)

All new roads built into the sale must be blocked to vehicle traffic upon completion of the sale. In general, this will require constructing a four (4') foot high berm of stumps and logs covered with earth. All stumps from road building and landing construction must be reserved to block any newly constructed roads upon completion of the sale. These stumps must be scattered along the road system to prohibit vehicular movement. Temporary berms may be required if no sale activity occurs for 30 or more consecutive days. Contact the sale administrator for specific details of design and placement.

4.2 - Maintenance

4.2.5 - Two wheel drive condition (2/04)

All existing trail roads on and adjacent to the sale area must be passable by two-wheel drive traffic for the duration of the sale.

5 - Operations

5.1 - Notification

5.1.1 - Pre-sale conference (10/16)

A pre-sale conference on site between the Purchaser and sale administrator is required prior to beginning any operations to determine landing and road locations. The Unit Manager or his/her representative must be contacted at least 3 days in advance to schedule the conference.

5.2 - Conduct of Operations

5.2.2 - Hazard Trees/Snags

5.2.2.1 - Den trees (10/16)

Obvious hollow and/or den trees shall be protected and left standing unless they are a safety hazard.

5.2.17 - Crane Mats/Timber Mats (9/17)

Some roads or skid trails may require extra protection such as that afforded by Crane Mats/Timber Mats. If available, Crane Mats/Timber Mats may be borrowed from the DNR and are located at the Marquette ICC, the Newberry Field Office and the Grayling Field Office. Contact the sale administrator for specific details. A Timber Sale Contract Supplement will be used to document the Purchaser's use of the DNR's Crane Mats/Timber Mats. It is the responsibility of the Purchaser to contact the sale administrator to schedule pick up and drop off. In addition, all mats must be cleaned prior to drop off. A charge of \$350.00 will be assessed for all damaged or non-returned mats. Damage is defined as misuse resulting in three or more broken cants.

5.2.22 - Operating Caution

5.2.22.1 - Operating caution (6/11)

It is recommended, but not required, that within Payment Unit(s) 1 - 5, cutting, skidding, and hauling occur during dry summer or frozen winter conditions. The reason for the recommendation is because of potentially wet soils in the sale.

5.4 - Soil Protection

5.4.1 - Rutting restriction, general (7/16)

Operations are to cease immediately if equipment and weather conditions result in rutting of roads and/or skid trails which is 12 inches or greater in depth and 50 feet in length. The Unit Manager or his/her representative may restrict hauling and/or skidding if ruts exceed the specified depth. With the Unit Manager or his/her representative's approval, the Purchaser may return to the area when the risk of rutting has decreased.

5.8 - Protection of Endangered Species

5.8.5 - Protection of raptor nests (3/13)

All trees with raptor nests will be protected if found during harvesting operations. Notification will be made to the Unit Manager or his/her representative who will notify the Wildlife Biologist so an on-site evaluation and recommendation can be made, if necessary.

7 - Other Conditions

7.2 - Extensions

7.2.5 - Weather related extension (1/13)

If weather conditions during the operating period of this contract prevent harvesting, this sale may qualify for a weather related extension. If approved, the normal extension fee would be waived. To qualify, there must be a documented attempt each year to harvest in the difficult portion of the sale.



TIMBER SALE MAP

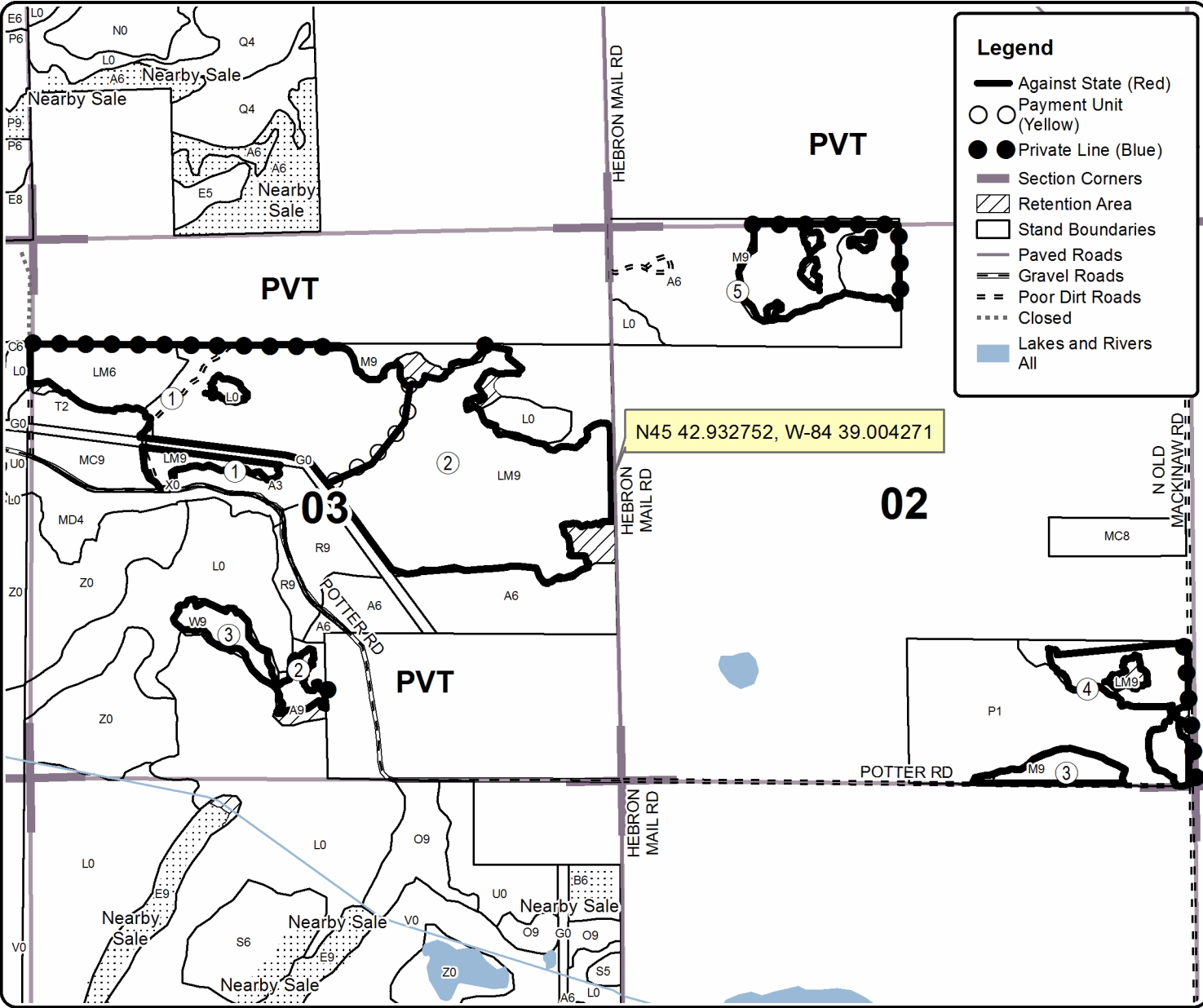
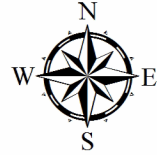
This information provided by authority of Part 525, 1994 PA 451, as amended.

Forest Management Unit Indian River FRD		County Cheboygan	Mapped By Harig, S. Schanz, B.	Date 08/01/2017	Page 1	of 1
Township 38N	Range 03W	Section(s) and Subdivision(s) Parts of Sections 2, 3 and 4.		Scale 1:17,000		

Cover Type				Density	
A = Aspen	H = Hemlock	N = Marsh	U = Upland Brush	0 = Non Stocked	5 = Pole Timber Medium
B = Paper Birch	J = Jack Pine	O = Oak	UM = Upland Mixed	1 = Seedling Sapling Poor	6 = Pole Timber Well
C = Cedar	L = Lowland Brush	P = Lowland Poplar	V = Bog or Marsh	2 = Seedling Sapling Medium	7 = Saw Timber Poor
D = Treed Bog	LM = Lowland Mixed	Q = Mixed Swamp Conifer	W = White Pine	3 = Seedling Sapling Well	8 = Saw Timber Medium
E = Swamp Hdwoods	M = Mpl, Bch, Brch	R = Red Pine	X = Non Stocked	4 = Pole Timber Poor	9 = Saw Timber Well
F = Spruce Fir	MC = Mixed Conifer	S = Black Spruce	Z = Water		
G = Grass	MD = Mixed Deciduous	T = Tamarack			

PU	Acres	PU	Acres
1	65.7	4	14.7
2	73.2	5	21.6
3	11.8		

Hebron Mix Compartment 163 187 Acres



Cyclone Aspen (52-107-17)
; Cheboygan COUNTY

In response to the notice of sale to be held 3:00 p.m. (local time) on January 23, 2018, I am hereby submitting my sealed bid (firm offer) for the following forest products to be cut. Bids for individual species must be at or above the advertised price. All non-responsive bid forms may be rejected.

<u>PRODUCTS & SPECIES</u>	<u>ESTIMATED VOLUME*</u>	<u>ADVERTISED PRICE</u>	<u>BID PRICE/UNIT</u>
Sawtimber			
B. T. Aspen	421.50 MBF	\$ 55.00/MBF	\$ _____
Red Maple	36.80 MBF	\$ 150.00/MBF	\$ _____
Red Pine	9.30 MBF	\$ 109.00/MBF	\$ _____
White Pine	2.00 MBF	\$ 62.00/MBF	\$ _____
Pulpwood			
B. T. Aspen	2,187.00 Cords	\$ 20.00/Cord	\$ _____
Balsam Fir	9.00 Cords	\$ 21.90/Cord	\$ _____
Jack Pine	238.00 Cords	\$ 25.15/Cord	\$ _____
Red Maple	513.00 Cords	\$ 22.60/Cord	\$ _____
Red Pine	16.00 Cords	\$ 46.55/Cord	\$ _____
White Pine	66.00 Cords	\$ 31.20/Cord	\$ _____

*The volumes are statistically estimated within plus (+) or minus (-) 14.85 percent. These estimated volumes are final and not subject to adjustment. Prospective bidders are urged to examine this timber and to make their own estimates of quantity and quality.

I understand that any or all bids may be rejected. All bids must be signed and all bid items must be bid or the bid form may be rejected. I also understand that consideration and awarding a contract will be based upon my past performance and ability to complete the contract based upon equipment and staffing subject to my control.

FEDERAL ID: _____ or SOCIAL SECURITY NUMBER: _____

Company or individual bidding: _____

Company representative's name: _____

Address: _____

City: _____ State: _____ Zip: _____

IF AVAILABLE, PLEASE PLACE THE PERSONALIZED LABEL FROM YOUR PROSPECTUS IN THE ABOVE BOX.

Individual or company representative's signature: _____ Date: _____

Phone number : _____ Email (optional): _____

THE WINNING BIDDER MUST COMPLETE THE VERIFICATION OF WORKER'S DISABILITY COMPENSATION ACT COMPLIANCE (ON REVERSE SIDE IF DOUBLE SIDED) WITHIN 21 DAYS OF SALE AWARD DATE



FOR DEPARTMENT USE ONLY	
Sale Number (XX - XXX - XX - XX)	
Forest Management Unit:	

TIMBER SALE VERIFICATION OF WORKER'S DISABILITY COMPENSATION ACT COMPLIANCE

As required by Act 317, P.A. 1969 (Worker's Compensation) and
Part 5 of Act 451 of 1994, as amended.

VERIFICATION OF WORKER'S DISABILITY COMPENSATION ACT COMPLIANCE

- This verification must be completed and submitted within 21 days of contract award and prior to the issuance of the timber sale contract.
- In addition, if boxes 2B or 2C are checked, then Notice of Exclusion or Certificate of Insurance must be submitted within twenty-one (21) days of the contract award and prior to the issuance of the timber sale contract.
- All information must be typed or printed except for written signatures.

Please Check Appropriate Categories:

1. My business is organized as (you **must** check one of the boxes below):
 - A. Sole Proprietorship (individual)
 - B. Partnership
 - C. Corporation
2. You **must** check one of the boxes below:
 - A. I certify my business is a sole proprietorship and it has no employees but the sole proprietor. I am not subject to the Worker's Compensation Laws.
 - B. I certify my business has satisfied its obligation to the Worker's Compensation Act through the use of an approved Notice of Exclusion (BWC-337, Rev. 5/96). I will provide a copy of the Notice of Exclusion within 21 days of the contract award. (For questions or a copy of the BWC-337, please call the Worker's Compensation Bureau at 517-322-1195).
 - C. I certify my business has a Worker's Compensation Policy. I will provide an original Certificate of Insurance within twenty-one (21) days of the contract award.
3. If you have checked item 2(A) or 2(B), you **must** indicate the number of **both** full-time and part-time employees, other than yourself, including family members and active partners (if none, you must enter "0").

_____ Full-time Employees

_____ Part-time Employees

Name of Business		Federal ID (or) Social Security No.	
Address		Telephone ()	
City	State	ZIP	

I hereby certify that the above information is true and correct. I agree to notify the Michigan DNR of any changes that occur in factors affecting my coverage during any of my present and future operations.

Signature of Owner or Authorized Representative

Title

Date

Please complete the "SEALED BID" information on the next page

Hebron Mix (52-110-17)
; Cheboygan COUNTY

In response to the notice of sale to be held 3:00 p.m. (local time) on January 23, 2018, I am hereby submitting my sealed bid (firm offer) for the following forest products to be cut. Bids for individual species must be at or above the advertised price. All non-responsive bid forms may be rejected.

<u>PRODUCTS & SPECIES</u>	<u>ESTIMATED VOLUME*</u>	<u>ADVERTISED PRICE</u>	<u>BID PRICE/UNIT</u>
Sawtimber			
Mixed Aspen	179.10 MBF	\$ 55.00/MBF	\$ _____
N. White Cedar	167.40 MBF	\$ 38.00/MBF	\$ _____
Paper Birch	15.20 MBF	\$ 58.00/MBF	\$ _____
Red Maple	25.70 MBF	\$ 150.00/MBF	\$ _____
Red Pine	26.10 MBF	\$ 109.00/MBF	\$ _____
Sugar Maple	46.10 MBF	\$ 289.00/MBF	\$ _____
White Pine	27.70 MBF	\$ 58.00/MBF	\$ _____
White Spruce	142.80 MBF	\$ 48.00/MBF	\$ _____
Yellow Birch	9.00 MBF	\$ 151.00/MBF	\$ _____
Pulpwood			
Balsam Fir	377.00 Cords	\$ 21.90/Cord	\$ _____
Mixed Aspen	956.00 Cords	\$ 20.00/Cord	\$ _____
Mixed Hardwood	473.00 Cords	\$ 22.60/Cord	\$ _____
N. White Cedar	1,068.00 Cords	\$ 18.95/Cord	\$ _____
Red Pine	14.00 Cords	\$ 46.55/Cord	\$ _____
Tamarack	32.00 Cords	\$ 20.00/Cord	\$ _____
White Pine	59.00 Cords	\$ 31.20/Cord	\$ _____
White Spruce	314.00 Cords	\$ 41.10/Cord	\$ _____

*The volumes are statistically estimated within plus (+) or minus (-) 12.90 percent. These estimated volumes are final and not subject to adjustment. Prospective bidders are urged to examine this timber and to make their own estimates of quantity and quality.

I understand that any or all bids may be rejected. All bids must be signed and all bid items must be bid or the bid form may be rejected. I also understand that consideration and awarding a contract will be based upon my past performance and ability to complete the contract based upon equipment and staffing subject to my control.

FEDERAL ID: _____ or SOCIAL SECURITY NUMBER: _____

Company or individual bidding: _____

Company representative's name: _____

Address: _____

City: _____ State: _____ Zip: _____

IF AVAILABLE, PLEASE PLACE THE PERSONALIZED LABEL FROM YOUR PROSPECTUS IN THE ABOVE BOX.

Individual or company representative's signature: _____ Date: _____

Phone number : _____ Email (optional): _____

THE WINNING BIDDER MUST COMPLETE THE VERIFICATION OF WORKER'S DISABILITY COMPENSATION ACT COMPLIANCE (ON REVERSE SIDE IF DOUBLE SIDED) WITHIN 21 DAYS OF SALE AWARD DATE



FOR DEPARTMENT USE ONLY
Sale Number (XX - XXX - XX - XX)
Forest Management Unit:

TIMBER SALE VERIFICATION OF WORKER'S DISABILITY COMPENSATION ACT COMPLIANCE

*As required by Act 317, P.A. 1969 (Worker's Compensation) and
Part 5 of Act 451 of 1994, as amended.*

VERIFICATION OF WORKER'S DISABILITY COMPENSATION ACT COMPLIANCE

- This verification must be completed and submitted within 21 days of contract award and prior to the issuance of the timber sale contract.
- In addition, if boxes 2B or 2C are checked, then Notice of Exclusion or Certificate of Insurance must be submitted within twenty-one (21) days of the contract award and prior to the issuance of the timber sale contract.
- All information must be typed or printed except for written signatures.

Please Check Appropriate Categories:

1. My business is organized as (you **must** check one of the boxes below):
 - A. Sole Proprietorship (individual)
 - B. Partnership
 - C. Corporation
2. You **must** check one of the boxes below:
 - A. I certify my business is a sole proprietorship and it has no employees but the sole proprietor. I am not subject to the Worker's Compensation Laws.
 - B. I certify my business has satisfied its obligation to the Worker's Compensation Act through the use of an approved Notice of Exclusion (BWC-337, Rev. 5/96). I will provide a copy of the Notice of Exclusion within 21 days of the contract award. (For questions or a copy of the BWC-337, please call the Worker's Compensation Bureau at 517-322-1195).
 - C. I certify my business has a Worker's Compensation Policy. I will provide an original Certificate of Insurance within twenty-one (21) days of the contract award.
3. If you have checked item 2(A) or 2(B), you **must** indicate the number of **both** full-time and part-time employees, other than yourself, including family members and active partners (if none, you must enter "0").

_____ Full-time Employees

_____ Part-time Employees

Name of Business		Federal ID (or) Social Security No.	
Address		Telephone ()	
City	State	ZIP	

I hereby certify that the above information is true and correct. I agree to notify the Michigan DNR of any changes that occur in factors affecting my coverage during any of my present and future operations.

Signature of Owner or Authorized Representative

Title

Date

Please complete the "SEALED BID" information on the next page

Tilhorn Mix (52-109-17)
; Cheboygan COUNTY

In response to the notice of sale to be held 3:00 p.m. (local time) on January 23, 2018, I am hereby submitting my sealed bid (firm offer) for the following forest products to be cut. Bids for individual species must be at or above the advertised price. All non-responsive bid forms may be rejected.

<u>PRODUCTS & SPECIES</u>	<u>ESTIMATED VOLUME*</u>	<u>ADVERTISED PRICE</u>	<u>BID PRICE/UNIT</u>
Sawtimber			
Mixed Aspen	217.40 MBF	\$ 55.00/MBF	\$ _____
Mixed Spruce	36.00 MBF	\$ 83.00/MBF	\$ _____
N. White Cedar	152.60 MBF	\$ 38.00/MBF	\$ _____
Paper Birch	44.90 MBF	\$ 58.00/MBF	\$ _____
Red Maple	101.80 MBF	\$ 150.00/MBF	\$ _____
Red Pine	81.70 MBF	\$ 109.00/MBF	\$ _____
White Pine	24.00 MBF	\$ 62.00/MBF	\$ _____
Pulpwood			
Balsam Fir	82.00 Cords	\$ 21.90/Cord	\$ _____
Mixed Aspen	592.00 Cords	\$ 20.00/Cord	\$ _____
Mixed Hardwood	693.00 Cords	\$ 22.60/Cord	\$ _____
Mixed Spruce	172.00 Cords	\$ 41.10/Cord	\$ _____
N. White Cedar	599.00 Cords	\$ 18.95/Cord	\$ _____
Red Pine	92.00 Cords	\$ 46.55/Cord	\$ _____
Tamarack	8.00 Cords	\$ 20.00/Cord	\$ _____
White Pine	19.00 Cords	\$ 31.20/Cord	\$ _____

*The volumes are statistically estimated within plus (+) or minus (-) 13.30 percent. These estimated volumes are final and not subject to adjustment. Prospective bidders are urged to examine this timber and to make their own estimates of quantity and quality.

I understand that any or all bids may be rejected. All bids must be signed and all bid items must be bid or the bid form may be rejected. I also understand that consideration and awarding a contract will be based upon my past performance and ability to complete the contract based upon equipment and staffing subject to my control.

FEDERAL ID: _____ or SOCIAL SECURITY NUMBER: _____

Company or individual bidding: _____

Company representative's name: _____

Address: _____

City: _____ State: _____ Zip: _____

IF AVAILABLE, PLEASE PLACE THE PERSONALIZED LABEL FROM YOUR PROSPECTUS IN THE ABOVE BOX.

Individual or company representative's signature: _____ Date: _____

Phone number : _____ Email (optional): _____

THE WINNING BIDDER MUST COMPLETE THE VERIFICATION OF WORKER'S DISABILITY COMPENSATION ACT COMPLIANCE (ON REVERSE SIDE IF DOUBLE SIDED) WITHIN 21 DAYS OF SALE AWARD DATE

