



**DEPARTMENT OF NATURAL RESOURCES
STATE OF MICHIGAN**

TIMBER SALE PROSPECTUS #6033

SCHEDULED SALE DATE AND TIME: 4:00 p.m. (local time) on January 8, 2018.

LOCATION: KALKASKA FIELD OFFICE, 2089 N BIRCH ST, KALKASKA, MI 49646.

PROSPECTUS NOTE: The bidder is advised to inspect the sale area and review the location, estimated volumes, operating costs and contract terms of proposed sales. Please be aware that some landowners may request 60 days or more notice for access across their land.

Notice is hereby given that bids will be received by the Unit Manager, TRAVERSE CITY MANAGEMENT UNIT, for certain timber on the following described lands:

Red Pine Colored Glasses (61-127-17)

Kalkaska County, Advertised Price \$26,469.50, 131.2 Acres, Jack Pine, Red Oak.

SALE NOTE: A recreation site such as a trail, pathway, or campground is within the sale area or the vicinity. Certain restrictions/specifications may be applicable including time restrictions.

Confusing Corners Mix (61-132-17)

Kalkaska County, Advertised Price \$7,384.15, 110.6 Acres, Aspen, Hardwood.

SALE NOTE: Sale must be chipped harvested.

A recreation site such as a trail, pathway, or campground is within the sale area or the vicinity. Certain restrictions/specifications may be applicable including time restrictions.

Wild Wasp Red Pine (61-140-17)

Kalkaska County, Advertised Price \$6,849.35, 37.2 Acres, Jack Pine, Red Pine.

SALE NOTE: Sale will have a 1 year contract in order to facilitate future planting operations with surrounding stands.

Buck 44 East (61-141-17)

Kalkaska County, Advertised Price \$330,276.10, 195.0 Acres, Aspen, Red Pine.

SALE NOTE: A recreation site such as a trail, pathway, or campground is within the sale area or the vicinity. Certain restrictions/specifications may be applicable including time restrictions.

Buck 44 West (61-143-17)

Kalkaska County, Advertised Price \$183,953.90, 241.7 Acres, Aspen, Hardwood.

SALE NOTE: This sale may have some very tricky access points onto Fletcher Road. The Purchaser will need to contact the Kalkaska County Road Commission at 231-258-2242 before operations begin.

Lost Swamp (61-144-17)

Kalkaska County, Advertised Price \$45,010.15, 197.2 Acres, Jack Pine, Spruce/Fir/Tamarack.

SALE NOTE: A recreation site such as a trail, pathway, or campground is within the sale area or the vicinity. Certain restrictions/specifications may be applicable including time restrictions.

BID INSTRUCTIONS (VER. 11/28/2017):

1. Scheduled Bid Location, Date, and Time (2/11)

Bids must be received by the Unit Manager, KALKASKA OFFICE, 2089 N BIRCH ST, KALKASKA, MI 49646, no later than 4:00 p.m. (local time) on January 8, 2018. For further information concerning this sale, contact David Lemmien at 231-922-5280 extension 6840.

2. Bidder's Qualifications (5/16)

Purchaser shall obtain workers compensation insurance to cover claims under Michigan's Worker's Disability Compensation Act of 1969 or similar employee benefit act of any other state applicable to an employee. If all or part of a timber sale was prepared by a private contractor, the contractor and that contractor's company are not permitted to bid on the timber sale contract. Bids will not be accepted from individuals or companies appearing on the DNR/FRD No-Bid List. This list contains the names of purchasers who previously failed to execute a contract within 21-days or who have a history of poor performance.

3. Preparation of Sealed Bids (5/16)

Bid Forms may be completed online thru Michigan DNR Timber Sale Online Bidding (OLB) at www.michigan.gov/timberbidding or by completing the hardcopy Bid Form found in the Timber Sale Prospectus. Hardcopy Bid Forms shall be manually signed in ink. Registration in OLB is considered your 'signature' for all bids submitted thru that system. Bid prices must be entered for each species and product in the Bid Price column for all material subject to bidding and all fill-in blanks must be completed. If erasures or other changes appear on the hardcopy Bid Form, each erasure or change must be initialed by the person signing the bid.

4. Submission of Sealed Bids (5/16)

Bid forms may be obtained from the Unit Manager or thru OLB. Bids may be submitted hardcopy or thru OLB. All hardcopy bids must be submitted on the bid form and in an envelope clearly identified as described in this section. NOTE: Only one bid form per bid envelope. Sealed bids must be submitted to the Unit office designated in the prospectus and must be submitted at or prior to the time established in the prospectus. The envelope should show on the outside (a) the sale name or number and (b) the date and time of bid opening, as shown in the prospectus. Bids received after the time specified in the sale prospectus are late bids and will be rejected.

It is possible for a bidder to submit multiple bids on a single sale. For example, a bid may be submitted hardcopy and a bid may be submitted thru OLB. Or, two bidders from the same company could both submit bids on the same sale. If this were to happen, the State would accept all bids received and award the contract accordingly. All bidding and contractual requirements would apply to all bids received.

5. Public Opening of Sealed Bids (7/16)

If conditions permit, the sealed bids will be publicly opened and posted at the time and place set in the prospectus.

If a bidder, present at a bid opening, has submitted bids on more than one sale, that bidder may withdraw their unopened bid envelopes or announce the withdrawal of their online bid after being declared the successful bidder on one sale.

6. Award of Contract (1/11)

Award of the contract will be made to the Bidder whose bid, conforming to the prospectus, is most advantageous to the State of Michigan on the basis of total value at rates bid for the estimated quantities. The State reserves the right to reject any bid or waive any minor irregularity in bids received. A written award mailed (or otherwise furnished) to the successful Bidder shall be deemed to result in a binding contract without further action by either party.

7. Down Payment (1/11)

The Bidder to whom award is made must make a down payment within 21 days of the sale award. The amount of the down payment will be calculated as shown in the Bond and Payment Schedule of this prospectus. Only cash may be used to meet this requirement.

8. Performance Security (1/11)

As guarantee of faithful performance, a cash bond, certificate of deposit, surety bond or irrevocable letter of credit (LOC) is required within 21 days of the sale award. The amount of the performance security is shown in the Bond and

Payment Schedule of this prospectus. If an LOC or surety is used, the coverage must extend for at least 6 months beyond the contract expiration.

9. Timber Sale Contract (11/17)

Additional conditions and requirements common to all timber sales are listed on the timber sale contract (R4031) and are available on line at www.michigan.gov/timber. Contact the Unit Manager for additional information or a sample contract. Within 21 days of the date of the award letter, the bidder must sign the contract and provide the required down payment, performance security, and verification of worker's disability compensation. The down payment and performance security shall be in accordance with the provisions of the timber sale contract, in the sums stated in this prospectus. If these actions are not taken, then the Bidder, the Bidder's corporation, and the corporation's principals may not be permitted to bid on State timber sales for a period of 1 year. In addition, the Bidder certifies that if awarded this contract, the Bidder will complete the timber sale contract in accordance with its terms and any modifications thereof including requirements to purchase, cut, and remove the included timber by the expiration date.

Payment Unit values in the State Forest Timber Sale Contract are calculated based on the advertised value of the Payment Unit as a percentage of the total advertised value of the contract. The advertised value of each Payment Unit is given in the Description of Timber by Payment Unit table on the Timber Sale Information page. For example, if the value of Payment Unit 1 is advertised as \$1,500 and the total Timber Sale value is advertised as \$10,000, the contract price for Payment Unit 1 will be 15% of the total bid price ($\$1,500/\$10,000 * 100$).

10. Disclaimer of Estimates and Bidder's Warranty of Inspection (7/16)

Before submitting this bid, the Bidder is advised and cautioned to inspect the sale area, review the requirements of the sale contract, and take other steps as may be reasonably necessary to ascertain the location, estimated volumes, construction estimates, and operating costs of the proposed sale. Failure to do so will not relieve the Bidder from responsibility for completing the contract.

The Bidder warrants that this bid is submitted solely on the basis of the Bidder's examination and inspection of the quality and quantity of the timber offered for sale and the Bidder's opinion of the value thereof and the costs of recovery. No reliance should be placed on the State of Michigan's estimates of timber quality, quantity or costs of recovery. Bidder further acknowledges that the State of Michigan: (i) expressly disclaims any warranty of fitness of timber for any purpose; (ii) offers this timber as is without any warranty of quality (merchantability) or quantity and (iii) expressly disclaims any warranty as to the quantity or quality of timber sold.

11. Certification and Chain-of-Custody (10/14)

Unless otherwise indicated in the contract under section 7 – Other Conditions of the Sale Specific Conditions & Requirements, the area encompassed by this timber sale is certified to the standards of the Forest Stewardship Council (FSC) - Certificate #SCS-FM/COC-00090N and the Sustainable Forestry Initiative (SFI) - Certificate # NSF-SFIS-5Y031-SF5. Forest products from this sale may be delivered to the mill as "FSC 100% and / or SFI certified" as long as the contractor hauling the forest products is chain-of-custody (COC) certified or covered under a COC certificate from the destination mill. The purchaser is responsible for maintaining COC after leaving the sale area.

12. Good Neighbor Authority (GNA) Requirements (7/16)

If the name of this timber sales contains the acronym GNA, it is authorized by the Good Neighbor Authority (GNA) and covered by various agreements between the U.S. Forest Service and the State. The timber sale occurs on federal land and the following conditions apply:

GNA contracts on US Forest Service land will not be awarded to purchasers on the Federal list of excluded parties. The System for Award Management (SAM) will be checked for active excluded parties prior to award of contract. In addition, the Bidder to whom award is made must complete an Assurance Regarding Felony Conviction or Tax Delinquent Status for Corporate Applicants (AD-3031).

13. Good Neighbor Authority (GNA) Requirements, con't (9/16)

Bidder certifies, by signing this bid form, that to the best of Bidder's knowledge that the following representations are accurate and complete.

a. That the Bidder and its principals are not presently debarred, suspended, proposed for debarment, declared ineligible, or voluntary excluded from timber sales (covered transactions) by any Federal department or agency.

b. That the Bidder and its principals have not within a 3-year period preceding this bid been convicted of or had a civil judgment rendered against them for commission of fraud or a criminal offense in connection with obtaining, attempting to obtain, or performing a public (Federal, State, or local) transaction or contract under a public transaction; violation of Federal or State antitrust statutes or commission of embezzlement, theft, forgery, bribery, falsification or destruction of records, making false statements, or receiving stolen property.

c. That the Bidder and its principals are not presently indicted for or otherwise criminally or civilly charged by a governmental entity (Federal, State, or local) with commission of any of the offenses enumerated in paragraph b of this certification.

d. That the Bidder and its principals have not within a 3-year period preceding this bid had one or more public transactions (Federal, State, or local) terminated for breach or default of a timber or forest product contract.

Bidders that cannot certify this requirement, in whole or in part, shall submit an explanation with their bid.

KEITH CREAGH

Director

TIMBER SALE INFORMATION

Red Pine Colored Glasses (61-127-17)

Kalkaska County (Advertised Price \$26,469.50)

SALE NOTE: A recreation site such as a trail, pathway, or campground is within the sale area or the vicinity. Certain restrictions/specifications may be applicable including time restrictions.

A timber sale contract for this lump sum, sealed bid timber sale will be awarded to the responsible bidder offering the highest sealed bid price. Bids must be at or above the following advertised price for each species:

<u>PRODUCTS & SPECIES</u>	<u>ESTIMATED UNITS*</u>	<u>ADVERTISED PRICE</u>
Sawtimber		
B. T. Aspen	0.80 MBF	\$ 53.00 / MBF
Red Maple	3.90 MBF	\$ 66.00 / MBF
Red Oak	55.20 MBF	\$ 80.00 / MBF
Red Pine	54.50 MBF	\$ 58.00 / MBF
White Oak	26.90 MBF	\$ 24.00 / MBF
White Pine	53.10 MBF	\$ 34.00 / MBF
Pulpwood		
B. T. Aspen	180.00 Cords	\$ 9.80 / Cord
Black Cherry	13.00 Cords	\$ 9.40 / Cord
Jack Pine	809.00 Cords	\$ 7.05 / Cord
Quaking Aspen	10.00 Cords	\$ 9.80 / Cord
Red Maple	103.00 Cords	\$ 9.40 / Cord
Red Oak	262.00 Cords	\$ 6.10 / Cord
Red Pine	169.00 Cords	\$ 21.35 / Cord
White Oak	109.00 Cords	\$ 6.10 / Cord
White Pine	234.00 Cords	\$ 6.90 / Cord

* The total volume is statistically estimated within plus (+) or minus (-) 10.98 percent. The estimated units are final and not subject to adjustment. Prospective bidders are urged to examine this timber and to make their own estimates of quantity and quality.

BOND AND PAYMENT SCHEDULE:

1. A bond in the amount of \$2,647.00 to insure faithful performance of the conditions of the contract will be deposited by the successful bidder within 21 days of the sale award.
2. Cutting in any sale or unit without the required advance payment would be considered a trespass.
3. Total payment must be paid in advance or according to the following schedule:
 - (a) Ten percent (10%) of the sale value must be paid within 21 days of the sale award.
 - (b) The 10% down payment will be credited towards the first unit cut.
4. If no cutting takes place, the 10% down payment will not be refunded.
5. Operations on the contract issued will terminate on 12/31/2019.

Description of Timber by Payment Unit (PU)

PU	MARKET GROUP	PRODUCT	QUANTITY	UNIT	ACRES	ADVERTISE PRICE	
1	Red Oak	Sawtimber	36.0	MBF	15.1	\$4,039.00	
	Red Oak	Pulpwood	187.0	Cords			
	White Oak		3.0	Cords			
2	Red Oak	Sawtimber	2.7	MBF	69.2	\$11,336.70	
	Red Pine		30.4	MBF			
	White Oak		1.6	MBF			
	White Pine	23.5	MBF				
	B. T. Aspen	Pulpwood	24.0	Cords			
	Black Cherry		7.0	Cords			
	Jack Pine		674.0	Cords			
	Quaking Aspen		1.0	Cords			
	Red Oak		9.0	Cords			
	Red Pine		120.0	Cords			
	White Oak		10.0	Cords			
	White Pine		113.0	Cords			
	3		Red Oak	Sawtimber			5.7
Red Pine			14.6		MBF		
White Oak		21.3	MBF				
White Pine		6.0	MBF				
B. T. Aspen		Pulpwood	28.0	Cords			
Jack Pine			97.0	Cords			
Quaking Aspen			9.0	Cords			
Red Maple			12.0	Cords			
Red Oak			33.0	Cords			
Red Pine			26.0	Cords			
White Oak			86.0	Cords			
White Pine			24.0	Cords			
4			B. T. Aspen	Sawtimber	0.8	MBF	24.9
	Red Maple		3.9		MBF		
	Red Oak	10.8	MBF				
	Red Pine	9.5	MBF				
	White Oak	4.0	MBF				
	White Pine	23.6	MBF				
	B. T. Aspen	Pulpwood	128.0	Cords			
	Black Cherry		6.0	Cords			
	Jack Pine		38.0	Cords			
	Red Maple		91.0	Cords			
	Red Oak		33.0	Cords			
	Red Pine		23.0	Cords			
	White Oak		10.0	Cords			
White Pine	97.0		Cords				
TOTAL:			194.4	MBF			
TOTAL:			1,889.0	Cords			

Sale Specific Conditions & Requirements

Sale Name: Red Pine Colored Glasses

Sale Number: 61-127-17 Seq#: 3

1 - Sale Area

1.2 - Boundaries

1.2.1 - Painted boundaries (1/14)

The sale boundary and Payment Unit boundaries are marked and identified by red and yellow paint. Exterior sale boundary lines against state are marked with red paint. Interior Payment Unit boundaries are marked with yellow paint. The painted boundary line trees are not Included Timber and are to be protected. Yellow painted trees designating an interior Payment Unit boundary are only to be cut when all surrounding Payment Units have been paid.

2 - Timber Specifications

2.1 - Included Timber

2.1.1 - Clearcut unit(s) with unmerchantable trees (6/14)

Within Payment Unit(s) 2, cut all trees that are two (2) inches or more at DBH except leave all red pine over 24 inches at DBH.

2.1.7 - Leave tree marked unit(s) (6/14)

Within Payment Unit(s) 1, 3 and 4, cut all trees that are two (2) inches or more at DBH except trees marked with green paint above and below stump height.

2.2 - Utilization

2.2.2 - Chipping required (5/14)

Payment Unit 2 must be chip harvested to facilitate future silvicultural activities. The Purchaser has the option to produce sawlogs or pulpwood bolts, but the remaining portion of the trees must be chipped and hauled. Do not chip 1/6 to 1/3 of the slash from harvested trees.

2.2.3 - Stump heights (4/07)

Stump heights within Payment Unit 2 shall not exceed 6 inches for all trees. This is in order to facilitate planting operations.

4 - Transportation

4.1 - Construction

4.1.6 - Road construction (1/09)

Construction of new roads or improvements of existing roads shall be done in such a way as to minimize the environmental and visual impacts. Merchantable trees shall be cut and utilized unless otherwise directed. Non-merchantable trees shall be severed and laid flat on the ground. Slash shall be chipped, utilized or otherwise removed from the sale. Stumps shall be set upright, not left on edge, and be moved at least 10 feet away from the road edge. Disturbed soil shall be feathered into the woods and not left in berms or windrows.

4.1.11 - Permits (2/12)

The Purchaser will secure any necessary highway permits that may be required.

4.2 - Maintenance

4.2.5 - Two wheel drive condition (2/04)

All existing trail roads on and adjacent to the sale area must be passable by two-wheel drive traffic for the duration of the sale.

5 - Operations

5.1 - Notification

5.1.1 - Pre-sale conference (10/16)

A pre-sale conference between the Purchaser and sale administrator is required prior to beginning any operations to

determine landing and road locations. The Unit Manager or his/her representative must be contacted at least 3 days in advance to schedule the conference.

5.1.3 - Well heads and natural gas pipelines (11/15)

The Purchaser is responsible for contacting the gas or pipeline company prior to operating equipment in the vicinity of well heads or natural gas pipelines.

5.1.4 - Post-sale conference (10/16)

A post-sale conference on site between the Purchaser and sale administrator is required 5 days prior to the completion of active logging operations to determine clean-up and repair of landings, road edges, and the fulfillment of other contract specifications.

5.2 - Conduct of Operations

5.2.2 - Hazard Trees/Snags

5.2.2.1 - Den trees (10/16)

Obvious hollow and/or den trees shall be protected and left standing unless they are a safety hazard.

5.2.3 - Operating Restrictions

5.2.3.4 - Oak wilt restriction (4/17)

Within Payment Unit(s) 1, 3 and 4, unless changed by written agreement cutting and skidding are not permitted during the period of April 15 to July 15. Operations may be allowed if specific steps are taken to prevent damaging uncut oak during the high risk period. Those steps include completing all road brushing before April 15th, clearing a tree-length buffer along uncut oak cover before April 15th, or leaving an uncut buffer there until after July 15th. This is necessary to reduce the spread of oak wilt. For more information, contact the Unit Manager or his/her representative.

5.2.4 - Dead and Down Creation

5.2.4.4 - Dead and down creation, grouse (8/13)

To encourage grouse and other wildlife, in Payment Unit(s) 1, 2, 3 and 4, leave one, 12" diameter or larger log-length (8 foot minimum) piece on the ground for every 5 acres identified by a piece of flagging. In addition, within Payment Units 1, 3, and 4, leave large tops in a single pile and at least one pile per 5 acres. These will be evenly scattered throughout the units. Also leave large tops in three piles in an opening on the west side of Payment Unit 2.

5.2.4.1 - Snowmobile trail protection (9/11)

The snowmobile trail is shown on the Timber Sale Map. Do not cut or damage posts with orange trail markers or traffic control signs. If the trail is used, it must be maintained and restored to a condition equal to or better than before the sale. The snowmobile trail may not be used for any timber sale operations from December 1 to March 31. All stumps within 20 feet of the snowmobile trail must be cut at ground level.

5.4 - Soil Protection

5.4.1 - Rutting restriction, general (7/16)

Operations are to cease immediately if equipment and weather conditions result in rutting of roads and/or skid trails which is 12 inches or greater in depth and 50 feet in length. The Unit Manager or his/her representative may restrict hauling and/or skidding if ruts exceed the specified depth. With the Unit Manager or his/her representative's approval, the Purchaser may return to the area when the risk of rutting has decreased.

5.8 - Protection of Endangered Species

5.8.5 - Protection of raptor nests (3/13)

All trees with raptor nests will be protected if found during harvesting operations. Notification will be made to the Unit Manager or his/her representative who will notify the Wildlife Biologist so an on-site evaluation and recommendation can be made, if necessary.

6 - Safety and Fire Prevention

6.2 - Signing

6.2.3 - Recreational trail posting (2/10)

The Purchaser is responsible for posting and maintaining caution signs on the snowmobile trail prior to beginning operations. The trail must be posted at appropriate distances from the sale area to warn of logging activity and truck traffic at both ends of the trail. Signs must be removed when harvest operations are suspended or completed. The Purchaser will provide these signs.



TIMBER SALE MAP

This information provided by authority of Part 525, 1994 PA 451, as amended.

Sale Number	Year
61-127	17

Forest Management Unit Traverse City	County Kalkaska	Mapped By Roell	Date 05/25/2017	Page 1	of 1
Cruised By Kalkaska Staff					

Township 26N	Range 08W	Section(s) and Subdivision(s) S1/2NW, NESW, NE Sec7; SESE Sec6; SWSW Sec5; W1/2NW Sec8	Scale 1:15,840
-----------------	--------------	---	-------------------

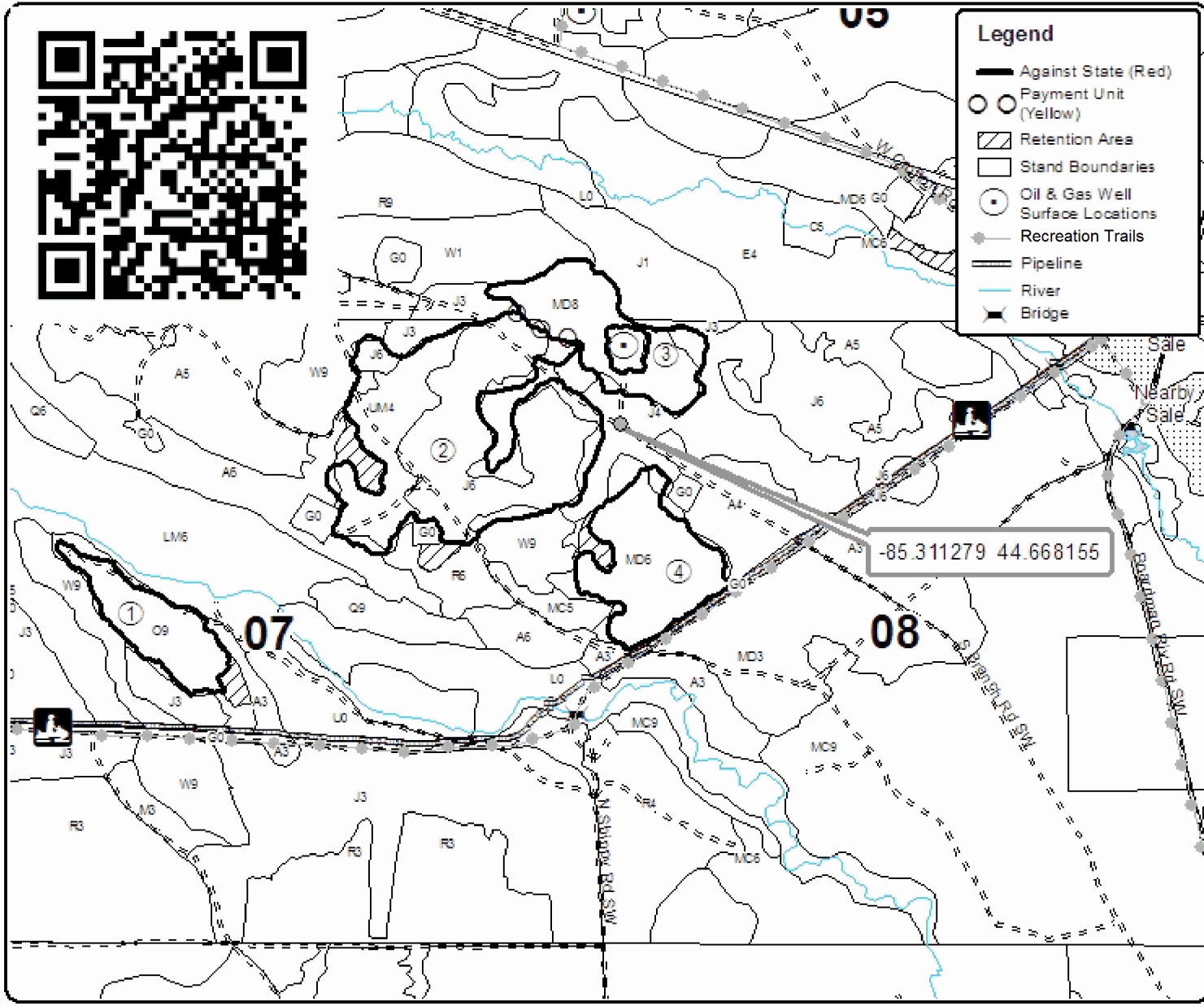
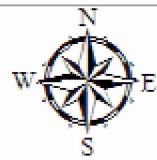
Cover Type				Density			
A = Aspen	H = Hemlock	N = Marsh	U = Upland Brush	0 = Non Stocked	5 = Pole Timber Medium		
B = Paper Birch	J = Jack Pine	O = Oak	UM = Upland Mixed	1 = Seeding Sapling Poor	6 = Pole Timber Well		
C = Cedar	L = Lowland Brush	P = Lowland Poplar	V = Bog or Marsh	2 = Seeding Sapling Medium	7 = Saw Timber Poor		
D = Treed Bog	LM = Lowland Mixed	Q = Mixed Swamp Conifer	W = White Pine	3 = Seeding Sapling Well	8 = Saw Timber Medium		
E = Swamp Hdwoods	M = Mpl, Boh, Bich	R = Red Pine	X = Non Stocked	4 = Pole Timber Poor	9 = Saw Timber Well		
F = Spruce Fir	MC = Mixed Conifer	S = Black Spruce	Z = Water				
G = Grass	MD = Mixed Deciduous	T = Tamarack					

PU	Acres	PU	Acres
1	15.1	4	24.9
2	69.2		
3	22		

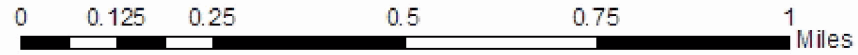
Red Pine Colored Glasses

Compartment 155

131.2 Acres



Legend	
	Against State (Red)
	Payment Unit (Yellow)
	Retention Area
	Stand Boundaries
	Oil & Gas Well
	Surface Locations
	Recreation Trails
	Pipeline
	River
	Bridge



TIMBER SALE INFORMATION

Confusing Corners Mix (61-132-17)

Kalkaska County (Advertised Price \$7,384.15)

SALE NOTE: Sale must be chipped harvested.

A recreation site such as a trail, pathway, or campground is within the sale area or the vicinity. Certain restrictions/specifications may be applicable including time restrictions.

A timber sale contract for this lump sum, sealed bid timber sale will be awarded to the responsible bidder offering the highest sealed bid price. Bids must be at or above the following advertised price for each species:

<u>PRODUCTS & SPECIES</u>	<u>ESTIMATED UNITS*</u>	<u>ADVERTISED PRICE</u>
Sawtimber		
Red Maple	10.00 MBF	\$ 66.00 / MBF
Sugar Maple	4.50 MBF	\$ 135.00 / MBF
White Pine	14.90 MBF	\$ 34.00 / MBF
Pulpwood		
Balsam Fir	2.00 Cords	\$ 5.80 / Cord
Jack Pine	1.00 Cords	\$ 7.05 / Cord
Mixed Aspen	179.00 Cords	\$ 9.80 / Cord
Mixed Hardwood	325.00 Cords	\$ 9.40 / Cord
Mixed Spruce	8.00 Cords	\$ 10.50 / Cord
Red Pine	2.00 Cords	\$ 21.35 / Cord
White Pine	95.00 Cords	\$ 6.90 / Cord

* The total volume is statistically estimated within plus (+) or minus (-) 17.96 percent. The estimated units are final and not subject to adjustment. Prospective bidders are urged to examine this timber and to make their own estimates of quantity and quality.

BOND AND PAYMENT SCHEDULE:

1. A bond in the amount of \$369.00 to insure faithful performance of the conditions of the contract will be deposited by the successful bidder within 21 days of the sale award.
2. Cutting in any sale or unit without the required advance payment would be considered a trespass.
3. Total payment must be paid in advance or according to the following schedule:
 - (a) Ten percent (10%) of the sale value must be paid within 21 days of the sale award.
 - (b) The 10% down payment will be credited towards the first unit cut.
4. If no cutting takes place, the 10% down payment will not be refunded.
5. Operations on the contract issued will terminate on 12/31/2019.

Description of Timber by Payment Unit (PU)

PU	MARKET GROUP	PRODUCT	QUANTITY	UNIT	ACRES	ADVERTISE PRICE
1	Red Maple	Sawtimber	8.8	MBF	54.9	\$4,742.80
	Sugar Maple		4.1	MBF		
	White Pine		14.9	MBF		
	Mixed Aspen	Pulpwood	31.0	Cords		
	Mixed Hardwood		219.0	Cords		
	Mixed Spruce		8.0	Cords		
	White Pine		95.0	Cords		
2	Red Maple	Sawtimber	1.2	MBF	55.7	\$2,641.35
	Sugar Maple		0.4	MBF		
	Balsam Fir	Pulpwood	2.0	Cords		
	Jack Pine		1.0	Cords		
	Mixed Aspen		148.0	Cords		
	Mixed Hardwood		106.0	Cords		
	Red Pine		2.0	Cords		
TOTAL:			29.4	MBF		
TOTAL:			612.0	Cords		

Sale Specific Conditions & Requirements

Sale Name: Confusing Corners Mix

Sale Number: 61-132-17 Seq#: 3

1 - Sale Area

1.2 - Boundaries

1.2.1 - Painted boundaries (1/14)

The sale boundary are marked and identified by blue and red paint. Exterior sale boundary lines against private property are marked with blue paint. Exterior sale boundary lines against state are marked with red paint. The painted boundary line trees are not Included Timber and are to be protected.

2 - Timber Specifications

2.1 - Included Timber

2.1.1 - Clearcut unit(s) with unmerchantable trees (6/14)

Within Payment Unit(s) 1 and 2, cut all trees that are two (2) inches or more at DBH.

2.2 - Utilization

2.2.2 - Chipping required (5/14)

This sale area must be chip harvested to facilitate subsequent planting operations. The Purchaser has the option to produce sawlogs or pulpwood bolts, but the remaining portion of the trees must be chipped and hauled. Do not chip 1/6 to 1/3 of the slash from harvested trees (tree tops and limbs less than four inches in diameter).

2.2.3 - Stump heights (4/07)

Stump heights within the Sale Area shall not exceed 6 inches for all trees. This is in order to facilitate planting operations.

4 - Transportation

4.1 - Construction

4.1.6 - Road construction (1/09)

Construction of new roads or improvements of existing roads shall be done in such a way as to minimize the environmental and visual impacts. Merchantable trees shall be cut and utilized unless otherwise directed. Non-merchantable trees shall be severed and laid flat on the ground. Slash shall be scattered, and not left in windrows and kept a minimum of 10 feet back from the road edge. Stumps shall be set upright, not left on edge, and be moved at least 10 feet away from the road edge. Disturbed soil shall be feathered into the woods and not left in berms or windrows.

4.1.7 - Road closure (10/11)

All new roads built into the sale must be blocked to vehicle traffic within 30 days of completion of hauling. In general, this will require constructing a four (4') foot high berm of stumps and logs covered with earth. Stumps and brush must be placed along the remainder of the trail. These roads must be rendered impassable to cars and trucks. Contact the sale administrator for specific details of design and placement.

5 - Operations

5.1 - Notification

5.1.1 - Pre-sale conference (10/16)

A pre-sale conference on site between the Purchaser and sale administrator is required prior to beginning any operations to determine landing and road locations. The Unit Manager or his/her representative must be contacted at least 3 days in advance to schedule the conference.

5.1.3 - Well heads and natural gas pipelines (11/15)

The Purchaser is responsible for contacting the gas or pipeline company prior to operating equipment in the vicinity of well heads or natural gas pipelines. Contact Tony Poli with ANR at 231-587-2126 regarding the pipeline in Payment Unit 1.

5.2 - Conduct of Operations

5.2.39 - ORV trail/route protection (12/12)

The ORV trail is shown on the Timber Sale Map. Do not cut trees or damage posts with orange ORV markers. All stumps within 5 feet of the trail must be cut flush with the ground. Maintain a 20 foot wide slash, debris, and rut free zone daily using the ORV trail or route as the centerline. Do not run equipment down the ORV trail. Skidding across the trail may only occur in locations approved by the sale administrator.

5.2.41 - Snowmobile trail protection (9/11)

There is a snowmobile trail and is shown on the Timber Sale Map. Do not cut or damage posts with orange trail markers or traffic control signs. If the trail is used, it must be maintained and restored to a condition equal to or better than before the sale. If the trail road is to be used for hauling during the snowmobile season, then a snow covered base must be left on the trail. Maintain a 20 foot wide slash, debris, and rut free zone daily using the snowmobile trail as the centerline. No decking of forest products will be permitted along the snowmobile trail. All stumps within 10 feet of the snowmobile trail must be cut at ground level.

5.4 - Soil Protection

5.4.1 - Rutting restriction, general (7/16)

Operations are to cease immediately if equipment and weather conditions result in rutting of roads and/or skid trails which is 12 inches or greater in depth and 50 feet in length. The Unit Manager or his/her representative may restrict hauling and/or skidding if ruts exceed the specified depth. With the Unit Manager or his/her representative's approval, the Purchaser may return to the area when the risk of rutting has decreased.

6 - Safety and Fire Prevention

6.2 - Signing

6.2.1 - Road posting (9/09)

The Purchaser is responsible for posting and maintaining caution signs on roads used for hauling prior to beginning operations. The road must be posted at appropriate distances from the sale area to warn of logging activity and truck traffic. Signs must be removed when harvest operations are suspended or completed. The Purchaser will provide these signs.

6.2.3 - Recreational trail posting (2/10)

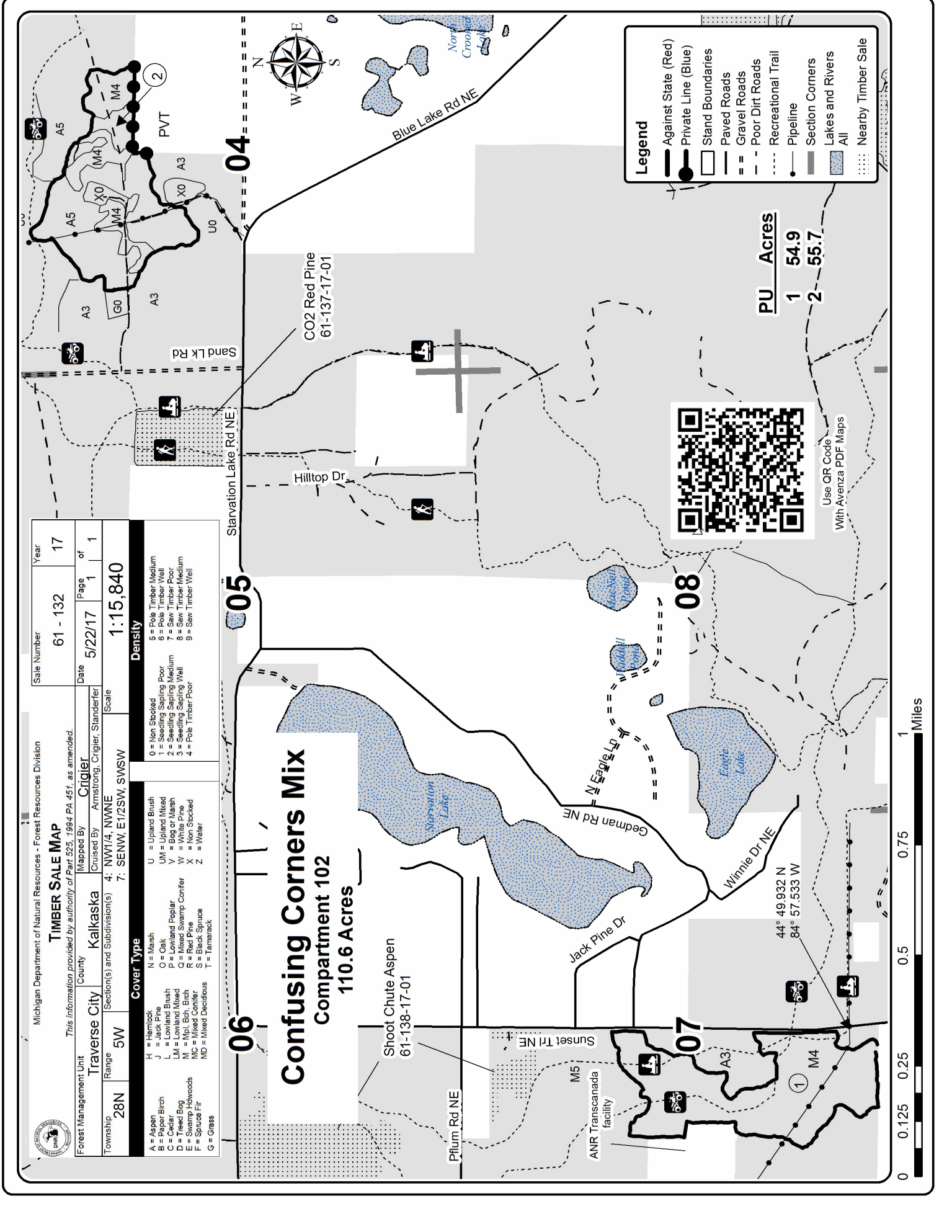
The Purchaser is responsible for posting and maintaining caution signs on the ORV and snowmobile trail prior to beginning operations. The trail must be posted at appropriate distances from the sale area to warn of logging activity and truck traffic at both ends of the trail. Signs must be removed when harvest operations are suspended or completed. The Purchaser will provide these signs.

TIMBER SALE MAP

This information provided by authority of Part 525, 1994 PA 451, as amended.

Forest Management Unit	County	Mapped By	Cruised By	Sale Number	Year
28N	Kalkaska	Armstrong, Crigger, Standen	Armstrong, Crigger, Standen	61 - 132	17
Range	Section(s) and Subdivision(s)	Scale	Date	Page	of
5W	4: NW1/4, NWNE 7: SENW, E1/2SW, SWSW	1:15,840	5/22/17	1	1
Cover Type			Density		
A = Aspen B = Paper Birch C = Cedar D = Mixed Bog E = Swamp Hardwoods F = Spruce Fir G = Grass H = Hemlock J = Jack Pine L = Lowland Brush LM = Lowland Mixed M = Mpl, Bch, Birch MC = Mixed Conifer S = Spruce Fir G = Grass N = Marsh O = Oak P = Lowland Poplar Q = Mixed Swamp Conifer R = Red Pine S = Black Spruce T = Tamarack U = Upland Brush UM = Upland Mixed V = Bog or Marsh W = White Pine X = Non Stocked Z = Water			0 = Non Stocked 1 = Seeding Sapling Poor 2 = Seeding Sapling Medium 3 = Seeding Sapling Well 4 = Pole Timber Poor 5 = Pole Timber Medium 6 = Pole Timber Well 7 = Saw Timber Poor 8 = Saw Timber Medium 9 = Saw Timber Well		

Confusing Corners Mix
Compartment 102
110.6 Acres



Legend

- Against State (Red)
- Private Line (Blue)
- Stand Boundaries
- Paved Roads
- Gravel Roads
- Poor Dirt Roads
- Recreational Trail
- Pipeline
- Section Corners
- Lakes and Rivers
- All
- Nearby Timber Sale

PU Acres
 1 **54.9**
 2 **55.7**



Use QR Code
 With Avenza PDF Maps



TIMBER SALE INFORMATION

Wild Wasp Red Pine (61-140-17)

Kalkaska County (Advertised Price \$6,849.35)

SALE NOTE: Sale will have a 1 year contract in order to facilitate future planting operations with surrounding stands.

A timber sale contract for this lump sum, sealed bid timber sale will be awarded to the responsible bidder offering the highest sealed bid price. Bids must be at or above the following advertised price for each species:

<u>PRODUCTS & SPECIES</u>	<u>ESTIMATED UNITS*</u>	<u>ADVERTISED PRICE</u>
Sawtimber		
Red Pine	33.80 MBF	\$ 58.00 / MBF
Pulpwood		
Jack Pine	3.00 Cords	\$ 7.05 / Cord
Red Pine	228.00 Cords	\$ 21.35 / Cord

* The total volume is statistically estimated within plus (+) or minus (-) 45.69 percent. The estimated units are final and not subject to adjustment. Prospective bidders are urged to examine this timber and to make their own estimates of quantity and quality.

BOND AND PAYMENT SCHEDULE:

1. A bond in the amount of \$685.00 to insure faithful performance of the conditions of the contract will be deposited by the successful bidder within 21 days of the sale award.
2. Cutting in any sale or unit without the required advance payment would be considered a trespass.
3. Total payment must be paid in advance or according to the following schedule:
 - (a) Ten percent (10%) of the sale value must be paid within 21 days of the sale award.
 - (b) The remainder is due before cutting begins.
4. If no cutting takes place, the 10% down payment will not be refunded.
5. Operations on the contract issued will terminate on 03/31/2019.

Description of Timber by Payment Unit (PU)

PU	MARKET GROUP	PRODUCT	QUANTITY	UNIT	ACRES	ADVERTISE PRICE
1	Red Pine	Sawtimber	33.8	MBF	37.2	\$6,849.35
	Jack Pine	Pulpwood	3.0	Cords		
	Red Pine		228.0	Cords		
TOTAL:			33.8	MBF		
TOTAL:			231.0	Cords		

Sale Specific Conditions & Requirements

Sale Name: Wild Wasp Red Pine

Sale Number: 61-140-17 Seq#: 3

1 - Sale Area

1.2 - Boundaries

1.2.1 - Painted boundaries (1/14)

The sale boundary and Payment Unit boundaries are marked and identified by blue and red paint, along with a timber type change and county road. Exterior sale boundary lines against private property are marked with blue paint. Exterior sale boundary lines against state are marked with red paint, with the following exceptions: The north boundary of the sale is unpainted and identified by the G0/R6 type change. The east boundary of the sale is unpainted and identified by Sunset Road. Retention areas are marked with red paint. The painted boundary line trees are not Included Timber and are to be protected.

2 - Timber Specifications

2.1 - Included Timber

2.1.1 - Clearcut unit(s) with unmerchantable trees (6/14)

Within Payment Unit(s) 1, cut all trees that are two (2) inches or more at DBH.

2.2 - Utilization

2.2.2 - Chipping required (5/14)

The Sale Area must be chip harvested to facilitate subsequent planting operations. The Purchaser has the option to produce sawlogs or pulpwood bolts, but the remaining portion of the trees must be chipped and hauled. Do not chip 1/6 to 1/3 of the slash from harvested trees (tree tops and limbs less than four inches in diameter).

2.2.3 - Stump heights (4/07)

Stump heights within the Sale Area shall not exceed 6 inches for all trees. This is in order to facilitate planting operations.

4 - Transportation

4.1 - Construction

4.1.11 - Permits (2/12)

The Purchaser will secure any necessary highway and/or county road permits that may be required.

4.2 - Maintenance

4.2.5 - Two wheel drive condition (2/04)

All existing trail roads on and adjacent to the sale area must be passable by two-wheel drive traffic for the duration of the sale.

5 - Operations

5.1 - Notification

5.1.1 - Pre-sale conference (10/16)

A pre-sale conference on site between the Purchaser and sale administrator is required prior to beginning any operations to determine landing and road locations. The Unit Manager or his/her representative must be contacted at least 10 days in advance to schedule the conference.

5.2 - Conduct of Operations

5.2.32 - Decking/landing restoration (9/13)

All decking and landing areas must have the surface area restored to a condition equal to or better than before. This is to ensure the proper regeneration of the stand. Wood debris, chips and "cookies" from trimmings must be removed or scattered away from landing and loading areas and may not be windrowed on the edge.

5.2.41 - Snowmobile trail protection (9/11)

The recreation trail is snowmobile trail #76 and is shown on the Timber Sale Map. Do not cut or damage posts with orange

trail markers or traffic control signs. If the trail is used, it must be maintained and restored to a condition equal to or better than before the sale. The road maintenance/restoration must be done prior to December 1. If the trail is used for hauling, it must be graded to the satisfaction of the Unit Manager or his/her representative prior to December 1st. If the trail road is to be used for hauling during the snowmobile season, then a snow covered base must be left on the trail. Maintain a 20 foot wide slash, debris, and rut free zone daily using the snowmobile trail as the centerline. No decking of forest products will be permitted along the snowmobile trail. All stumps within 20 feet of the snowmobile trail must be cut at ground level.

5.2.43 - Opening protection (12/08)

No activities are permitted in openings marked on the Timber Sale Map with the letter "G". Any damage to the openings shall be repaired according to specifications of the Unit Manager or his/her representative.

5.4 - Soil Protection

5.4.1 - Rutting restriction, general (7/16)

Operations are to cease immediately if equipment and weather conditions result in rutting of roads and/or skid trails which is 12 inches or greater in depth and 50 feet in length. The Unit Manager or his/her representative may restrict hauling and/or skidding if ruts exceed the specified depth. With the Unit Manager or his/her representative's approval, the Purchaser may return to the area when the risk of rutting has decreased.

6 - Safety and Fire Prevention

6.2 - Signing

6.2.1 - Road posting (9/09)

The Purchaser is responsible for posting and maintaining caution signs on Sunset Road and King Road prior to beginning operations. The road must be posted at appropriate distances from the sale area to warn of logging activity and truck traffic. Signs must be removed when harvest operations are suspended or completed. The Purchaser will provide these signs.

6.2.2 - Snowmobile trail posting (8/09)

The Purchaser is responsible for posting and maintaining caution signs on snowmobile trail #76 prior to beginning operations during the snowmobile season (approximately December 1 to March 31). The trail must be posted at appropriate distances from the sale area to warn of logging activity and truck traffic. Signs must be removed when harvest operations are suspended or completed. The Purchaser will provide these signs.

8 - Performance and Settlement

8.3 - Uncompleted or Terminated Contracts

8.3.1 - Completion of contract, chipping (1/16)

In addition to cutting, all chipping must be completed by the contract expiration date. If chipping has not been completed, an extension fee or damages may be charged per General Condition & Requirement 7.2 and 8.3.



TIMBER SALE MAP

This information provided by authority of Part 525, 1994 PA 451, as amended.

Forest Management Unit Traverse City Management Unit	County Kalkaska	Mapped By Peterson	Date 05/25/2017	Page 1	of 1
Township 26N	Range 06W	Section(s) and Subdivision(s) Sec. 36 - NW1/4 & Sec. 35 - NENE & SENE	Scale 1:15,840		

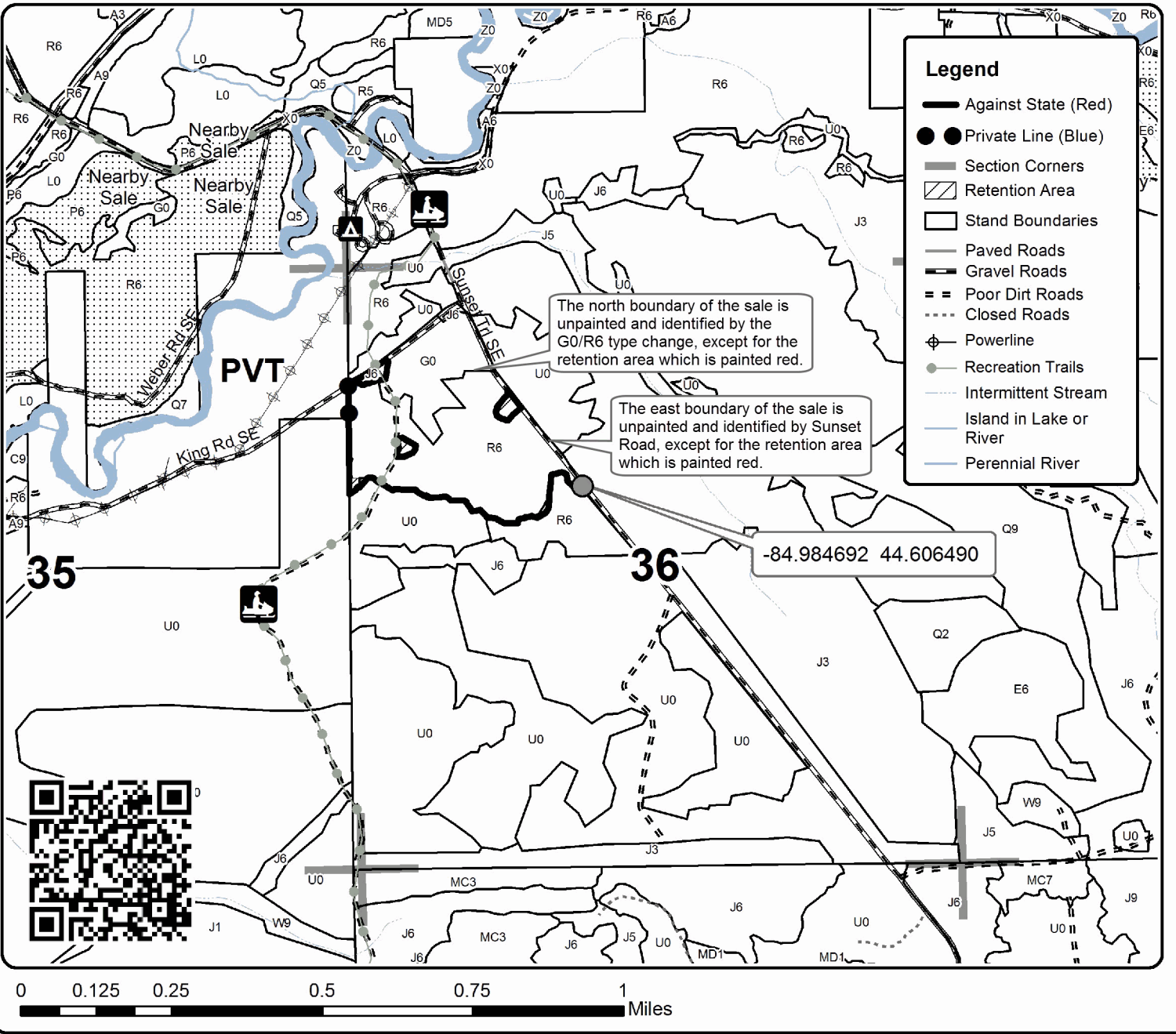
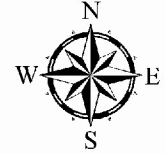
Cover Type				Density	
A = Aspen	H = Hemlock	N = Marsh	U = Upland Brush	0 = Non Stocked	5 = Pole Timber Medium
B = Paper Birch	J = Jack Pine	O = Oak	UM = Upland Mixed	1 = Seedling Sapling Poor	6 = Pole Timber Well
C = Cedar	L = Lowland Brush	P = Lowland Poplar	V = Bog or Marsh	2 = Seedling Sapling Medium	7 = Saw Timber Poor
D = Tread Bog	LM = Lowland Mixed	Q = Mixed Swamp Conifer	W = White Pine	3 = Seedling Sapling Well	8 = Saw Timber Medium
E = Swamp Hdwoods	M = Mpl, Bch, Brch	R = Red Pine	X = Non Stocked	4 = Pole Timber Poor	9 = Saw Timber Well
F = Spruce Fir	MC = Mixed Conifer	S = Black Spruce	Z = Water		
G = Grass	MD = Mixed Deciduous	T = Tamarack			

PU **Acres**
1 **37.2**

Wild Wasp Red Pine

Compartment 132

37.2 Acres



TIMBER SALE INFORMATION

Buck 44 East (61-141-17)

Kalkaska County (Advertised Price \$330,276.10)

SALE NOTE: A recreation site such as a trail, pathway, or campground is within the sale area or the vicinity. Certain restrictions/specifications may be applicable including time restrictions.

A timber sale contract for this lump sum, sealed bid timber sale will be awarded to the responsible bidder offering the highest sealed bid price. Bids must be at or above the following advertised price for each species:

<u>PRODUCTS & SPECIES</u>	<u>ESTIMATED UNITS*</u>	<u>ADVERTISED PRICE</u>
Sawtimber		
Mixed Aspen	51.20 MBF	\$ 113.00 / MBF
Red Maple	3.30 MBF	\$ 142.00 / MBF
Red Oak	114.80 MBF	\$ 171.00 / MBF
Red Pine	1,651.20 MBF	\$ 124.00 / MBF
White Oak	30.20 MBF	\$ 52.00 / MBF
White Pine	2.10 MBF	\$ 73.00 / MBF
Pulpwood		
Jack Pine	87.00 Cords	\$ 15.05 / Cord
Mixed Aspen	1,854.00 Cords	\$ 21.05 / Cord
Mixed Oak	632.00 Cords	\$ 13.05 / Cord
Red Maple	308.00 Cords	\$ 20.20 / Cord
Red Pine	932.00 Cords	\$ 45.80 / Cord
White Pine	29.00 Cords	\$ 14.75 / Cord

* The total volume is statistically estimated within plus (+) or minus (-) 9.20 percent. The estimated units are final and not subject to adjustment. Prospective bidders are urged to examine this timber and to make their own estimates of quantity and quality.

BOND AND PAYMENT SCHEDULE:

1. A bond in the amount of \$16,514.00 to insure faithful performance of the conditions of the contract will be deposited by the successful bidder within 21 days of the sale award.
2. Cutting in any sale or unit without the required advance payment would be considered a trespass.
3. Total payment must be paid in advance or according to the following schedule:
 - (a) Ten percent (10%) of the sale value must be paid within 21 days of the sale award.
 - (b) The 10% down payment will be credited towards the first unit cut.
4. If no cutting takes place, the 10% down payment will not be refunded.
5. Operations on the contract issued will terminate on 12/31/2020.

Description of Timber by Payment Unit (PU)

PU	MARKET GROUP	PRODUCT	QUANTITY	UNIT	ACRES	ADVERTISE PRICE	
1	Mixed Aspen	Sawtimber	22.3	MBF	28.2	\$18,248.25	
	<i>B. T. Aspen</i>		22.3	<i>MBF</i>			
	Red Oak		3.8	MBF			
	Red Pine		4.9	MBF			
	Jack Pine		Pulpwood	12.0			Cords
	Mixed Aspen			518.0			Cords
	<i>B. T. Aspen</i>			493.0			<i>Cords</i>
	<i>Quaking Aspen</i>			25.0			<i>Cords</i>
	Mixed Oak			136.0			Cords
	<i>Red Oak</i>			136.0			<i>Cords</i>
	Red Maple			52.0			Cords
	Red Pine			10.0			Cords
	White Pine			7.0			Cords
	2			Mixed Aspen			Sawtimber
<i>B. T. Aspen</i>		2.4	<i>MBF</i>				
<i>Quaking Aspen</i>		12.1	<i>MBF</i>				
Red Maple		2.0	MBF				
Red Oak		51.7	MBF				
White Oak		12.5	MBF				
White Pine		0.9	MBF				
Jack Pine		Pulpwood	31.0	Cords			
Mixed Aspen			641.0	Cords			
<i>B. T. Aspen</i>			207.0	<i>Cords</i>			
<i>Quaking Aspen</i>			434.0	<i>Cords</i>			
Mixed Oak			171.0	Cords			
<i>Red Oak</i>			114.0	<i>Cords</i>			
<i>White Oak</i>			57.0	<i>Cords</i>			
Red Maple			119.0	Cords			
Red Pine			2.0	Cords			
White Pine	9.0		Cords				
3	Mixed Aspen	Sawtimber	14.4	MBF	24.5	\$20,821.45	
	<i>B. T. Aspen</i>		3.5	<i>MBF</i>			
	<i>Quaking Aspen</i>		10.9	<i>MBF</i>			
	White Pine		1.2	MBF			
	Jack Pine		Pulpwood	44.0			Cords
	Mixed Aspen			691.0			Cords
	<i>B. T. Aspen</i>			292.0			<i>Cords</i>
	<i>Quaking Aspen</i>			399.0			<i>Cords</i>
	Mixed Oak			75.0			Cords
	<i>Red Oak</i>			52.0			<i>Cords</i>
	<i>White Oak</i>			23.0			<i>Cords</i>
	Red Maple			126.0			Cords
	Red Pine			4.0			Cords
	White Pine			13.0			Cords
4	Red Maple	Sawtimber	0.5	MBF	41.9	\$96,645.50	
	Red Oak		22.0	MBF			
	Red Pine		609.9	MBF			
	White Oak		6.6	MBF			
	Mixed Aspen		Pulpwood	1.0			Cords
	<i>B. T. Aspen</i>			1.0			<i>Cords</i>
	Mixed Oak			93.0			Cords
	<i>Red Oak</i>			57.0			<i>Cords</i>
	<i>White Oak</i>			36.0			<i>Cords</i>
	Red Maple			4.0			Cords
Red Pine	339.0	Cords					
5	Red Maple	Sawtimber	0.4	MBF	34.7	\$80,038.50	

Description of Timber by Payment Unit (PU), con't

PU	MARKET GROUP	PRODUCT	QUANTITY	UNIT	ACRES	ADVERTISE PRICE
5 con't	Red Oak	Sawtimber	18.2	MBF		
	Red Pine		505.1	MBF		
	White Oak		5.4	MBF		
	Mixed Aspen		1.0	Cords		
	<i>B. T. Aspen</i>		1.0	<i>Cords</i>		
	Mixed Oak		77.0	Cords		
	<i>Red Oak</i>		47.0	<i>Cords</i>		
	<i>White Oak</i>		30.0	<i>Cords</i>		
	Red Maple		3.0	Cords		
	Red Pine		281.0	Cords		
6	Red Maple	Sawtimber	0.2	MBF	18.0	\$41,526.60
	Red Oak		9.4	MBF		
	Red Pine		262.0	MBF		
	White Oak		2.8	MBF		
	Mixed Aspen		1.0	Cords		
	<i>B. T. Aspen</i>		1.0	<i>Cords</i>		
	Mixed Oak		39.0	Cords		
	<i>Red Oak</i>		24.0	<i>Cords</i>		
	<i>White Oak</i>		15.0	<i>Cords</i>		
	Red Maple		2.0	Cords		
Red Pine	146.0	Cords				
7	Red Maple	Sawtimber	0.2	MBF	18.5	\$42,697.60
	Red Oak		9.7	MBF		
	Red Pine		269.3	MBF		
	White Oak		2.9	MBF		
	Mixed Aspen		1.0	Cords		
	<i>B. T. Aspen</i>		1.0	<i>Cords</i>		
	Mixed Oak		41.0	Cords		
	<i>Red Oak</i>		25.0	<i>Cords</i>		
	<i>White Oak</i>		16.0	<i>Cords</i>		
	Red Maple		2.0	Cords		
Red Pine	150.0	Cords				
TOTAL:			1,852.8	MBF		
TOTAL:			3,842.0	Cords		

Sale Specific Conditions & Requirements

Sale Name: Buck 44 East

Sale Number: 61-141-17 Seq#: 1

1 - Sale Area

1.2 - Boundaries

1.2.1 - Painted boundaries (1/14)

The sale boundary and Payment Unit boundaries are marked and identified by red and yellow paint. Exterior sale boundary lines against state are marked with red paint. Interior Payment Unit boundaries are marked with yellow paint. Yellow painted trees designating an interior Payment Unit boundary are only to be cut when all surrounding Payment Units have been paid for, and they are designated to be cut in both adjacent units.

2 - Timber Specifications

2.1 - Included Timber

2.1.1 - Clearcut unit(s) with unmerchantable trees (6/14)

Within Payment Unit(s) 1 - 7, cut all trees that are two (2) inches or more at DBH except do not cut trees that are marked with green paint. In addition, within Payment Units 1, 2 and 3, do not cut white pine or balsam fir that are under 4" DBH.

2.2 - Utilization

2.2.2 - Chipping required (5/14)

Payment Units 4, 5, 6 and 7 must be chip harvested to facilitate subsequent planting operations. The Purchaser has the option to produce sawlogs or pulpwood bolts, but the remaining portion of the trees must be chipped and hauled. Products may be produced as roundwood and forwarded to decking areas in final product length, but the tops must be left intact and skidded to the landing for chipping in order to minimize the amount of residual slash left in Military training areas. The requirement to retain approximately 1/6 to 1/3 of tree tops and limbs less than four inches in diameter does not apply (G. C. & R. 2.2). This is because of the follow up cultivation work that is needed.

2.2.3 - Stump heights (4/07)

Stump heights within Payment Units 4, 5, 6 and 7 shall not exceed 6 inches for all trees. This is in order to facilitate planting operations.

3 - Payments

3.3 - Pre-measured Sales

3.3.4 - Dividing payment units (7/14)

Payment Unit(s) over \$15,000 in value may be divided at the request of the Purchaser and upon approval of the Unit Manager. Dividing Payment Units is a contract modification which requires a Timber Sale Contract Supplement.

3.6 - Payment Unit Cutting Schedule

3.6.1 - Order of cutting (1/09)

Payment Units shall be cut so that units 4, 5, 6 and 7 are completed within 12 months of each other. This is to help the planning effort and increase efficiency for the follow up cultivation work of trenching and planting.

4 - Transportation

4.1 - Construction

4.1.6 - Road construction (1/09)

Construction of new roads or improvements of existing roads shall be done in such a way as to minimize the environmental and visual impacts. Merchantable trees shall be cut and utilized unless otherwise directed. Non-merchantable trees shall be severed and laid flat on the ground. Slash shall be scattered, and not left in windrows and kept a minimum of 10 feet back from the road edge, or be chipped, utilized or otherwise removed from the sale. Stumps shall be set upright, not left on edge, and be moved at least 10 feet away from the road edge. Disturbed soil shall be feathered into the woods and not left in berms or windrows.

4.1.7 - Road closure (10/11)

All new roads built into the sale must be blocked to vehicle traffic upon completion of the sale. Overgrown roads that are reopened shall be considered new roads. In general, this will require constructing a four (4') foot high berm of stumps and logs covered with earth. Stumps and brush must be placed along the remainder of the trail where they are readily available.

5 - Operations

5.2 - Conduct of Operations

5.2.3 - Operating Restrictions

5.2.3.4 - Oak wilt restriction (9/17)

Within Payment Units 1 - 7, unless changed by written agreement, cutting, skidding, hauling and brushing of access roads are not permitted during the period of April 15 to July 15. Operations may be allowed if specific steps are taken to prevent damaging uncut oak during the high risk period. Those steps include completing all road brushing before April 15th, clearing a tree-length buffer along uncut oak cover before April 15th or leaving an uncut buffer there until after July 15th. This is necessary to reduce the spread of oak wilt. For more information, contact the Unit Manager or his/her representative.

5.2.4 - Dead and Down Creation

5.2.4.4 - Dead and down creation, grouse (8/13)

To encourage grouse and other wildlife, in Payment Unit(s) 1 and 3, leave at least six (6) large tops in a single pile and at least one pile for every 2 acres. Cull pieces of larger materials should be worked into these brush piles when they are readily available. These will be evenly scattered throughout the units.

5.2.38 - No decking against live trees (2/04)

Cut products may not be decked against unmarked or designated leave trees.

6 - Safety and Fire Prevention

6.2 - Signing

6.2.1 - Road posting (9/09)

The Purchaser is responsible for posting and maintaining caution signs on Township Road and Fletcher Road prior to beginning operations. The road must be posted at appropriate distances from the sale area to warn of logging activity and truck traffic. Signs must be removed when harvest operations are suspended or completed. The Purchaser will provide these signs.



TIMBER SALE MAP

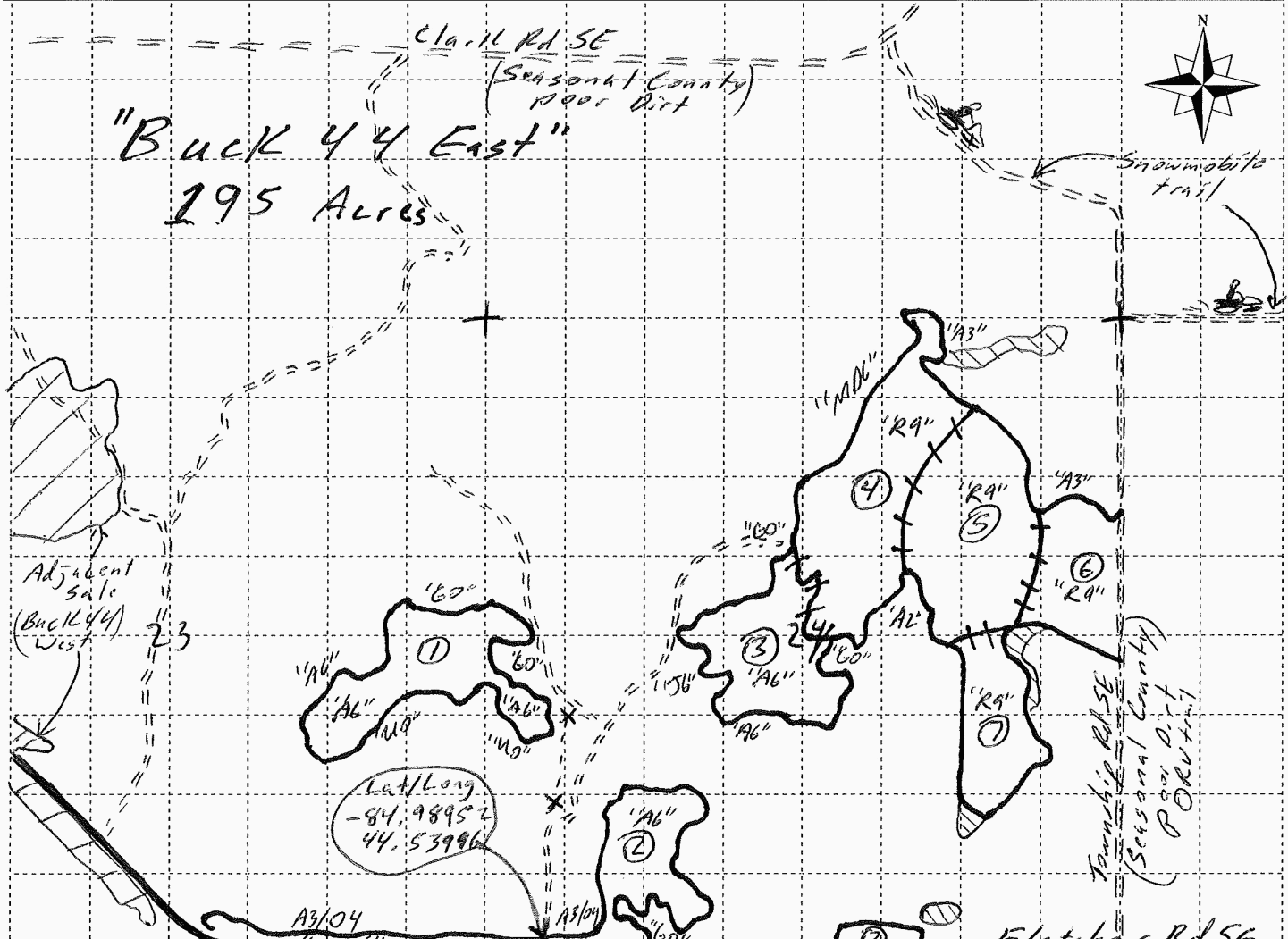
This information provided by authority of Part 5, 1994 PA 451, as amended.

Sale Number	Year
61-141	17

Forest Management Unit <i>Traverse City</i>	County <i>Kalkaska</i>	Mapped By <i>Standerfer</i>	Date <i>8/16/17</i>	Page <i>1</i>	of <i>1</i>
Compartments Number <i>144</i>	Township <i>25N</i>	Range <i>06W</i>	Section(s) and Subdivision(s) <i>E 1/2, SW 1/4, 23-SENE, N 1/2 SE 24-5 1/2 NW</i>	Scale: = 1 mile	

Cover Type			
A = Aspen	J = Jack Pine	O = Oak	U = Upland Brush
B = Paper Birch	K = Rock	P = Lowland Poplar	UM = Upland Mix Forest
C = Cedar	L = Lowland Brush	Q = Mixed Swamp Conifer	V = Bog or Marsh
D = Treed Bog	LM = Lowland Mix Forest	R = Red Pine	W = White Pine
E = Swamp Hardwoods	M = Maple, Beech, Birch	S = Black Spruce	X = Non Stocked
F = Spruce/Fir	MC = Mixed Conifer	T = Tamarack	Y = Sand
G = Grass	MD = Mixed Deciduous	Z = Water	
H = Hemlock	N = Marsh		

Density	
0 = Non Stocked	5 = Pole Timber Medium
1 = Seedling Sapling Poor	6 = Pole Timber Well
2 = Seedling Sapling Medium	7 = Saw Timber Poor
3 = Seedling Sapling Well	8 = Saw Timber Medium
4 = Pole Timber Poor	9 = Saw Timber Well



Units	
① - 28.2 Acres	⊖ - Retention
② - 29.2 Acres	⊕ - Near By Sale
③ - 24.5 Acres	~ - Red Sale Boundary (State)
④ - 41.9 Acres	+++ - Yellow Unit Boundary
⑤ - 34.7 Acres	
⑥ - 18 Acres	
⑦ - 18.5 Acres	

TIMBER SALE INFORMATION

Buck 44 West (61-143-17)

Kalkaska County (Advertised Price \$183,953.90)

SALE NOTE: This sale may have some very tricky access points onto Fletcher Road. The Purchaser will need to contact the Kalkaska County Road Commission at 231-258-2242 before operations begin.

A timber sale contract for this lump sum, sealed bid timber sale will be awarded to the responsible bidder offering the highest sealed bid price. Bids must be at or above the following advertised price for each species:

<u>PRODUCTS & SPECIES</u>	<u>ESTIMATED UNITS*</u>	<u>ADVERTISED PRICE</u>
Sawtimber		
BI/R/Hybrid Oak	10.70 MBF	\$ 104.00 / MBF
Mixed Aspen	251.40 MBF	\$ 105.00 / MBF
Red Maple	9.40 MBF	\$ 132.00 / MBF
Red Oak	282.80 MBF	\$ 160.00 / MBF
Red Pine	37.90 MBF	\$ 116.00 / MBF
White Oak	59.70 MBF	\$ 48.00 / MBF
White Pine	6.50 MBF	\$ 68.00 / MBF
Pulpwood		
Jack Pine	723.00 Cords	\$ 14.05 / Cord
Misc. Species 2	60.00 Cords	\$ 12.20 / Cord
Mixed Aspen	2,496.00 Cords	\$ 19.65 / Cord
Mixed Hardwood	869.00 Cords	\$ 18.85 / Cord
Mixed Oak	1,788.00 Cords	\$ 12.20 / Cord
Red Pine	52.00 Cords	\$ 42.75 / Cord
White Pine	138.00 Cords	\$ 13.75 / Cord

* The total volume is statistically estimated within plus (+) or minus (-) 8.54 percent. The estimated units are final and not subject to adjustment. Prospective bidders are urged to examine this timber and to make their own estimates of quantity and quality.

BOND AND PAYMENT SCHEDULE:

1. A bond in the amount of \$9,198.00 to insure faithful performance of the conditions of the contract will be deposited by the successful bidder within 21 days of the sale award.
2. Cutting in any sale or unit without the required advance payment would be considered a trespass.
3. Total payment must be paid in advance or according to the following schedule:
 - (a) Ten percent (10%) of the sale value must be paid within 21 days of the sale award.
 - (b) The 10% down payment will be credited towards the first unit cut.
4. If no cutting takes place, the 10% down payment will not be refunded.
5. Operations on the contract issued will terminate on 12/31/2020.

Description of Timber by Payment Unit (PU)

PU	MARKET GROUP	PRODUCT	QUANTITY	UNIT	ACRES	ADVERTISE PRICE
1	Red Oak	Sawtimber	2.4	MBF	39.0	\$8,083.60
	White Oak		3.0	MBF		
	Jack Pine	Pulpwood	422.0	Cords		
	<i>Jack Pine</i>		422.0	<i>Cords</i>		
	Misc. Species 2		27.0	Cords		
	Mixed Aspen		37.0	Cords		
	<i>Quaking Aspen</i>		37.0	<i>Cords</i>		
	Mixed Hardwood		2.0	Cords		
	<i>Red Maple</i>		2.0	<i>Cords</i>		
	Mixed Oak		38.0	Cords		
	<i>Red Oak</i>		25.0	<i>Cords</i>		
<i>White Oak</i>		13.0	<i>Cords</i>			
White Pine		5.0	Cords			
2	Red Oak	Sawtimber	4.2	MBF	25.0	\$5,615.70
	White Oak		4.7	MBF		
	Jack Pine	Pulpwood	301.0	Cords		
	<i>Jack Pine</i>	<i>Sawtimber</i>	21.5	<i>MBF</i>		
	<i>Jack Pine</i>	<i>Pulpwood</i>	258.0	<i>Cords</i>		
	Mixed Aspen		3.0	Cords		
	<i>Quaking Aspen</i>		3.0	<i>Cords</i>		
	Mixed Oak		33.0	Cords		
	<i>Red Oak</i>		18.0	<i>Cords</i>		
	<i>White Oak</i>		15.0	<i>Cords</i>		
	White Pine		2.0	Cords		
3	Mixed Aspen	Sawtimber	77.8	MBF	42.7	\$35,652.85
	<i>B. T. Aspen</i>		77.8	<i>MBF</i>		
	Red Oak		11.4	MBF		
	Red Pine		11.2	MBF		
	White Pine		6.5	MBF		
	Mixed Aspen	Pulpwood	702.0	Cords		
	<i>B. T. Aspen</i>		702.0	<i>Cords</i>		
	Mixed Hardwood		247.0	Cords		
	<i>Red Maple</i>		247.0	<i>Cords</i>		
	Mixed Oak		287.0	Cords		
	<i>Red Oak</i>		282.0	<i>Cords</i>		
	<i>White Oak</i>		5.0	<i>Cords</i>		
	Red Pine		28.0	Cords		
White Pine		56.0	Cords			
4	BI/R/Hybrid Oak	Sawtimber	3.3	MBF	26.1	\$28,261.55
	Mixed Aspen		17.8	MBF		
	<i>B. T. Aspen</i>		17.8	<i>MBF</i>		
	Red Maple		2.2	MBF		
	Red Oak		97.4	MBF		
	White Oak		27.7	MBF		
	Mixed Aspen	Pulpwood	42.0	Cords		
	<i>B. T. Aspen</i>		42.0	<i>Cords</i>		
	Mixed Hardwood		76.0	Cords		
	<i>Red Maple</i>		76.0	<i>Cords</i>		
	Mixed Oak		496.0	Cords		
	<i>BI/R/Hybrid Oak</i>		14.0	<i>Cords</i>		
	<i>Red Oak</i>		348.0	<i>Cords</i>		
<i>White Oak</i>		134.0	<i>Cords</i>			
White Pine		39.0	Cords			
5	BI/R/Hybrid Oak	Sawtimber	7.4	MBF	41.4	\$55,595.70
	Mixed Aspen		28.4	MBF		
	<i>B. T. Aspen</i>		28.4	<i>MBF</i>		

Description of Timber by Payment Unit (PU), con't

PU	MARKET GROUP	PRODUCT	QUANTITY	UNIT	ACRES	ADVERTISE PRICE	
5 con't	Red Maple	Sawtimber	2.8	MBF			
	Red Oak		157.5	MBF			
	Red Pine		25.4	MBF			
	White Oak		24.3	MBF			
	Misc. Species 2		Pulpwood	33.0			Cords
	Mixed Aspen			368.0			Cords
	<i>B. T. Aspen</i>			368.0			<i>Cords</i>
	Mixed Hardwood			220.0			Cords
	<i>Red Maple</i>			220.0			<i>Cords</i>
	Mixed Oak			747.0			Cords
	<i>BI/R/Hybrid Oak</i>			24.0			<i>Cords</i>
	<i>Red Oak</i>			588.0			<i>Cords</i>
	<i>White Oak</i>			135.0			<i>Cords</i>
	Red Pine			20.0			Cords
White Pine	30.0	Cords					
6	Mixed Aspen	Sawtimber		127.4	MBF	67.5	\$50,744.50
	<i>B. T. Aspen</i>			120.4	<i>MBF</i>		
	<i>Quaking Aspen</i>			7.0	<i>MBF</i>		
	Red Maple		4.4	MBF			
	Red Oak		9.9	MBF			
	Red Pine		1.3	MBF			
	Mixed Aspen		Pulpwood	1,344.0	Cords		
	<i>B. T. Aspen</i>			1,279.0	<i>Cords</i>		
	<i>Quaking Aspen</i>			65.0	<i>Cords</i>		
	Mixed Hardwood			324.0	Cords		
	<i>Red Maple</i>			314.0	<i>Cords</i>		
	<i>Sugar Maple</i>			10.0	<i>Cords</i>		
	Mixed Oak			187.0	Cords		
	<i>Red Oak</i>			171.0	<i>Cords</i>		
	<i>White Oak</i>			16.0	<i>Cords</i>		
	Red Pine			4.0	Cords		
	White Pine			6.0	Cords		
TOTAL:				658.4	MBF		
TOTAL:				6,126.0	Cords		

Sale Specific Conditions & Requirements

Sale Name: Buck 44 West

Sale Number: 61-143-17 Seq#: 1

1 - Sale Area

1.2 - Boundaries

1.2.1 - Painted boundaries (1/14)

The sale boundary and Payment Unit boundaries are marked and identified by red and yellow paint. Exterior sale boundary lines against state are marked with red paint. Interior Payment Unit boundaries are marked with yellow paint. Yellow painted trees designating an interior Payment Unit boundary are only to be cut when all surrounding Payment Units have been paid for and they are designated for removal in both adjacent units.

2 - Timber Specifications

2.1 - Included Timber

2.1.1 - Clearcut unit(s) with unmerchantable trees (6/14)

Within Payment Unit(s) 1 & 2, cut all trees that are two (2) inches or more at DBH.

2.1.2 - Clearcut unit(s) w/o unmerchantable trees (8/11)

Within Payment Unit(s) 3, 4, 5 & 6, cut all trees which meet minimum piece specifications in 2.2 Utilization, except do not cut those marked with green paint.

2.1.11 - Description of timber note (2/04)

Note that Misc. Species 2 = dead oak, which is designated for cutting.

2.2 - Utilization

2.2.2 - Chipping required (5/14)

Payment Units 1 & 2 must be chip harvested to facilitate subsequent planting operations. The Purchaser has the option to produce sawlogs or pulpwood bolts, but the remaining portion of the trees must be chipped and hauled. Do not chip 1/6 to 1/3 of the slash from harvested trees (tree tops and limbs less than four inches in diameter).

2.2.3 - Stump heights (4/07)

Stump heights within Payment Unit(s) 1 & 2 shall not exceed 6 inches for all trees. This is in order to facilitate planting operations.

3 - Payments

3.3 - Pre-measured Sales

3.3.4 - Dividing payment units (7/14)

Payment Unit(s) over \$15,000 may be divided at the request of the Purchaser and upon approval of the Unit Manager. Dividing Payment Units is a contract modification which requires a Timber Sale Contract Supplement.

4 - Transportation

4.1 - Construction

4.1.6 - Road construction (1/09)

Construction of new roads or improvements of existing roads shall be done in such a way as to minimize the environmental and visual impacts. Merchantable trees shall be cut and utilized unless otherwise directed. Non-merchantable trees shall be severed and laid flat on the ground. Slash shall be scattered, and not left in windrows and kept a minimum of 10 feet back from the road edge. Stumps shall be set upright, not left on edge, and be moved at least 10 feet away from the road edge. Disturbed soil shall be feathered into the woods and not left in berms or windrows.

4.1.7 - Road closure (10/11)

All new roads built into the sale must be blocked to vehicle traffic upon completion of the sale. In general, this will require constructing a four (4') foot high berm of stumps and logs covered with earth. Stumps and brush must be placed along the remainder of the trail where they are readily available.

5 - Operations

5.2 - Conduct of Operations

5.2.2 - Hazard Trees/Snags

5.2.2.1 - Den trees (10/16)

Obvious hollow and/or den trees shall be protected and left standing unless they are a safety hazard.

5.2.3 - Operating Restrictions

5.2.3.4 - Oak wilt restriction (9/17)

Within Payment Units 1-6, unless changed by written agreement, cutting, skidding, hauling and brushing of access roads are not permitted during the period of April 15 to July 15. Operations may be allowed if specific steps are taken to prevent damaging uncut oak during the high risk period. Those steps include completing all road brushing before April 15th, clearing a tree-length buffer along uncut oak cover before April 15th or leaving an uncut buffer there until after July 15th. This is necessary to reduce the spread of oak wilt. For more information, contact the Unit Manager or his/her representative.

5.2.4 - Dead and Down Creation

5.2.4.4 - Dead and down creation, grouse (8/13)

To encourage grouse and other wildlife, in Payment Unit(s) 3 & 6, leave at least six (6) large tops in a single pile and at least one pile per every 2 acres. Cull pieces of larger material should be included in these brush piles when it is readily available. These will be evenly scattered throughout the unit.

5.2.29 - Shrub protection (9/07)

Do not cut or damage hawthorn, witch-hazel, dogwood or juneberry. These woody-shrub plants are highly beneficial to various wildlife species.

6 - Safety and Fire Prevention

6.2 - Signing

6.2.1 - Road posting (9/09)

The Purchaser is responsible for posting and maintaining caution signs on Fletcher Road prior to beginning operations. The road must be posted at appropriate distances from the sale area to warn of logging activity and truck traffic. Signs must be removed when harvest operations are suspended or completed. The Purchaser will provide these signs.



TIMBER SALE MAP

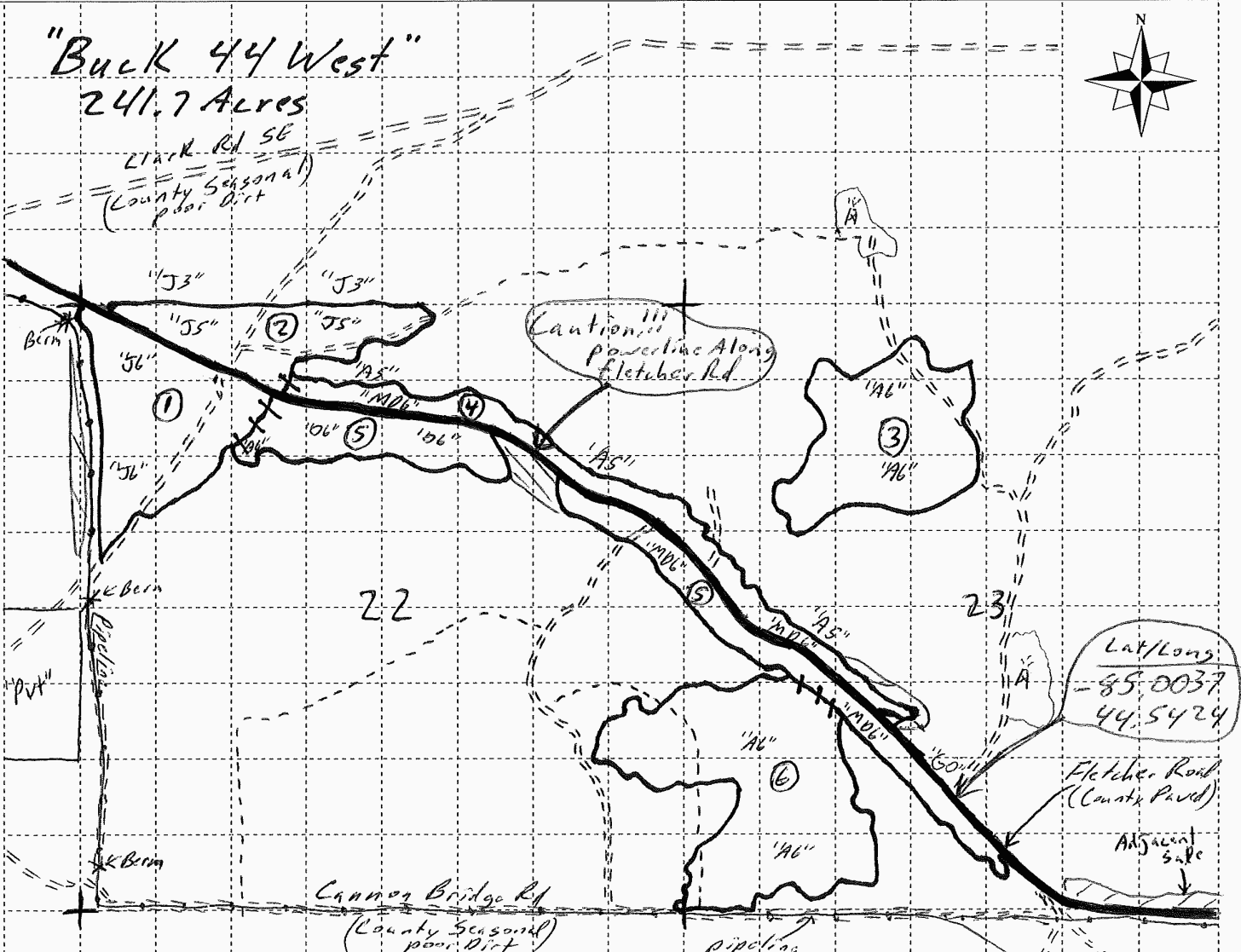
This information provided by authority of Part 5, 1994 PA 451, as amended.

Sale Number	61-143	Year	17
Date	8/18/17	Page	1 of 1
Scale: ... 4"..... = 1 mile			

Forest Management Unit	County	Mapped By	Cruised By
Traverse City	Kalkaska	Standerfer	Kalkaska Office
Compartment Number	Township	Range	Section(s) and Subdivision(s)
144	25N	06W	22-N 1/2, E 1/2, 23 W 1/2, SW SE

Cover Type			
A = Aspen	J = Jack Pine	O = Oak	U = Upland Brush
B = Paper Birch	K = Rock	P = Lowland Poplar	UM = Upland Mix Forest
C = Cedar	L = Lowland Brush	Q = Mixed Swamp Conifer	V = Bog or Marsh
D = Treed Bog	LM = Lowland Mix Forest	R = Red Pine	W = White Pine
E = Swamp Hardwoods	M = Maple, Beech, Birch	S = Black Spruce	X = Non Stocked
F = Spruce/Fir	MC = Mixed Conifer	T = Tamarack	Y = Sand
G = Grass	MD = Mixed Deciduous	Z = Water	
H = Hemlock	N = Marsh		

Density	
0 = Non Stocked	5 = Pole Timber Medium
1 = Seedling Sapling Poor	6 = Pole Timber Well
2 = Seedling Sapling Medium	7 = Saw Timber Poor
3 = Seedling Sapling Well	8 = Saw Timber Medium
4 = Pole Timber Poor	9 = Saw Timber Well



Units	Legend
① - 39 Acres	Red Sale Boundary (State)
② - 25 Acres	Yellow Unit Boundary
③ - 42.7 Acres	Oil Facility
④ - 26.1 Acres	pipeline
⑤ - 41.4 Acres	Historical or Closed in Road (May be Drivable)
⑥ - 67.9 Acres	Retention Areas
	Two track (poor dirt)

TIMBER SALE INFORMATION

Lost Swamp (61-144-17)

Kalkaska County (Advertised Price \$45,010.15)

SALE NOTE: A recreation site such as a trail, pathway, or campground is within the sale area or the vicinity. Certain restrictions/specifications may be applicable including time restrictions.

A timber sale contract for this lump sum, sealed bid timber sale will be awarded to the responsible bidder offering the highest sealed bid price. Bids must be at or above the following advertised price for each species:

<u>PRODUCTS & SPECIES</u>	<u>ESTIMATED UNITS*</u>		<u>ADVERTISED PRICE</u>
Sawtimber			
Jack Pine	59.10	MBF	\$ 26.00 / MBF
Quaking Aspen	16.10	MBF	\$ 98.00 / MBF
Red Maple	20.60	MBF	\$ 123.00 / MBF
White Spruce	13.90	MBF	\$ 42.00 / MBF
Pulpwood			
Balsam Fir	184.00	Cords	\$ 10.75 / Cord
Black Cherry	27.00	Cords	\$ 17.50 / Cord
Jack Pine	1,540.00	Cords	\$ 13.05 / Cord
Mixed Aspen	333.00	Cords	\$ 18.25 / Cord
N. White Cedar	48.00	Cords	\$ 17.65 / Cord
Paper Birch	13.00	Cords	\$ 17.15 / Cord
Red Maple	97.00	Cords	\$ 17.50 / Cord
Red Oak	7.00	Cords	\$ 11.30 / Cord
Tamarack	12.00	Cords	\$ 30.25 / Cord
White Spruce	357.00	Cords	\$ 19.45 / Cord

* The total volume is statistically estimated within plus (+) or minus (-) 12.87 percent. The estimated units are final and not subject to adjustment. Prospective bidders are urged to examine this timber and to make their own estimates of quantity and quality.

BOND AND PAYMENT SCHEDULE:

1. A bond in the amount of \$2,251.00 to insure faithful performance of the conditions of the contract will be deposited by the successful bidder within 21 days of the sale award.
2. Cutting in any sale or unit without the required advance payment would be considered a trespass.
3. Total payment must be paid in advance or according to the following schedule:
 - (a) Ten percent (10%) of the sale value must be paid within 21 days of the sale award.
 - (b) The 10% down payment will be credited towards the first unit cut.
4. If no cutting takes place, the 10% down payment will not be refunded.
5. Operations on the contract issued will terminate on 12/31/2019.

Description of Timber by Payment Unit (PU)

PU	MARKET GROUP	PRODUCT	QUANTITY	UNIT	ACRES	ADVERTISE PRICE
1	Quaking Aspen	Sawtimber	10.5	MBF	25.2	\$7,655.00
	White Spruce		6.2	MBF		
	Balsam Fir	Pulpwood	64.0	Cords		
	<i>Balsam Fir</i>	<i>Sawtimber</i>	4.7	<i>MBF</i>		
	<i>Balsam Fir</i>	<i>Pulpwood</i>	55.0	<i>Cords</i>		
	Mixed Aspen		196.0	Cords		
	<i>Quaking Aspen</i>		196.0	<i>Cords</i>		
	White Spruce		108.0	Cords		
2	Jack Pine	Sawtimber	20.4	MBF	57.6	\$9,768.20
	Red Maple		1.6	MBF		
	Black Cherry	Pulpwood	4.0	Cords		
	<i>Black Cherry</i>		4.0	<i>Cords</i>		
	Jack Pine		670.0	Cords		
	Red Maple		13.0	Cords		
3	Quaking Aspen	Sawtimber	4.1	MBF	10.7	\$2,973.75
	Red Maple		3.4	MBF		
	Balsam Fir	Pulpwood	14.0	Cords		
	<i>Balsam Fir</i>	<i>Sawtimber</i>	1.1	<i>MBF</i>		
	<i>Balsam Fir</i>	<i>Pulpwood</i>	12.0	<i>Cords</i>		
	Black Cherry		11.0	Cords		
	<i>Black Cherry</i>		11.0	<i>Cords</i>		
	Mixed Aspen		81.0	Cords		
	<i>Quaking Aspen</i>		81.0	<i>Cords</i>		
	Red Maple		19.0	Cords		
4	Quaking Aspen	Sawtimber	0.1	MBF	6.0	\$2,035.90
	Red Maple		1.8	MBF		
	White Spruce		2.3	MBF		
	Balsam Fir	Pulpwood	19.0	Cords		
	<i>Balsam Fir</i>	<i>Sawtimber</i>	2.0	<i>MBF</i>		
	<i>Balsam Fir</i>	<i>Pulpwood</i>	15.0	<i>Cords</i>		
	Black Cherry		7.0	Cords		
	<i>Black Cherry</i>	<i>Sawtimber</i>	1.0	<i>MBF</i>		
	<i>Black Cherry</i>	<i>Pulpwood</i>	5.0	<i>Cords</i>		
	Mixed Aspen		7.0	Cords		
	<i>Quaking Aspen</i>		7.0	<i>Cords</i>		
	Paper Birch		6.0	Cords		
	<i>Paper Birch</i>		6.0	<i>Cords</i>		
	Red Maple		5.0	Cords		
	Tamarack		12.0	Cords		
	<i>Tamarack</i>	<i>Sawtimber</i>	1.7	<i>MBF</i>		
<i>Tamarack</i>	<i>Pulpwood</i>	9.0	<i>Cords</i>			
White Spruce		36.0	Cords			
5	Red Maple	Sawtimber	2.3	MBF	6.8	\$3,053.30
	White Spruce		3.1	MBF		
	Balsam Fir	Pulpwood	37.0	Cords		
	<i>Balsam Fir</i>	<i>Sawtimber</i>	5.6	<i>MBF</i>		
	<i>Balsam Fir</i>	<i>Pulpwood</i>	26.0	<i>Cords</i>		
	Red Maple		27.0	Cords		
White Spruce		91.0	Cords			
6	Jack Pine	Sawtimber	22.0	MBF	40.6	\$8,886.15
	Quaking Aspen		1.4	MBF		
	Red Maple		6.1	MBF		
	Jack Pine	Pulpwood	491.0	Cords		
	Mixed Aspen		40.0	Cords		
	<i>Quaking Aspen</i>		40.0	<i>Cords</i>		
Red Maple		12.0	Cords			

Description of Timber by Payment Unit (PU), con't

PU	MARKET GROUP	PRODUCT	QUANTITY	UNIT	ACRES	ADVERTISE PRICE
6 con't	Red Oak	Pulpwood	7.0	Cords		
	<i>Red Oak</i>	<i>Sawtimber</i>	1.6	<i>MBF</i>		
	<i>Red Oak</i>	<i>Pulpwood</i>	4.0	<i>Cords</i>		
7	Jack Pine	Sawtimber	16.7	MBF	35.5	\$5,380.15
	Jack Pine	Pulpwood	379.0	Cords		
8	Red Maple	Sawtimber	5.4	MBF	14.8	\$5,257.70
	White Spruce		2.3	MBF		
	Balsam Fir	Pulpwood	50.0	Cords		
	<i>Balsam Fir</i>	<i>Sawtimber</i>	0.9	<i>MBF</i>		
	<i>Balsam Fir</i>	<i>Pulpwood</i>	48.0	<i>Cords</i>		
	Black Cherry		5.0	Cords		
	<i>Black Cherry</i>		5.0	<i>Cords</i>		
	Mixed Aspen		9.0	Cords		
	<i>B. T. Aspen</i>		9.0	<i>Cords</i>		
	N. White Cedar		48.0	Cords		
	<i>N. White Cedar</i>	<i>Sawtimber</i>	3.2	<i>MBF</i>		
	<i>N. White Cedar</i>	<i>Pulpwood</i>	42.0	<i>Cords</i>		
	Paper Birch		7.0	Cords		
	<i>Paper Birch</i>	<i>Sawtimber</i>	1.4	<i>MBF</i>		
	<i>Paper Birch</i>	<i>Pulpwood</i>	4.0	<i>Cords</i>		
	Red Maple		21.0	Cords		
	White Spruce		122.0	Cords		
TOTAL:			109.7	MBF		
TOTAL:			2,618.0	Cords		

Sale Specific Conditions & Requirements

Sale Name: Lost Swamp

Sale Number: 61-144-17 Seq#: 1

1 - Sale Area

1.2 - Boundaries

1.2.1 - Painted boundaries (1/14)

The sale boundary and Payment Unit boundaries are marked and identified by blue, red, and yellow paint. Exterior sale boundary lines against private property are marked with blue paint. Exterior sale boundary lines against state are marked with red paint. Interior Payment Unit boundaries are marked with yellow paint. Within Payment Units 2, 6, and 7, red painted trees designating interior Payment Unit boundaries are to be cut and utilized.

2 - Timber Specifications

2.1 - Included Timber

2.1.1 - Clearcut unit(s) with unmerchantable trees (6/14)

Within Payment Unit(s) 2, 6, and 7, cut all trees that are two (2) inches or more at DBH.

Exception: within 20' feet of the snowmobile trail, trees under 4 inches at DBH are to be left uncut and undisturbed where possible. Jack pine can still be cut in this strip.

2.1.7 - Leave tree marked unit(s) (6/14)

Within Payment Unit(s) 1, 4, 5, and 8, all trees, which meet minimum piece specifications in 2.2 Utilization, are designated for cutting except white pine, oak, and trees marked with green paint above and below stump height. In addition, do not cut cedar within Payment Unit 4.

Within Payment Unit(s) 3, all trees, which meet minimum piece specifications in 2.2 Utilization, are designated for cutting except white pine, oak, balsam fir and trees marked with green paint above and below stump height. In addition, cut all deciduous trees that are two (2) inches or more at DBH.

2.2 - Utilization

2.2.2 - Chipping required (5/14)

Payment Units 2, 6, and 7 must be chip harvested to facilitate subsequent planting operations. The Purchaser has the option to produce sawlogs or pulpwood bolts, but the remaining portion of the trees must be chipped and hauled. The requirement to retain approximately 1/6 to 1/3 of tree tops and limbs less than four inches in diameter does not apply (G. C. & R. 2.2). This is to facilitate subsequent planting operations.

3 - Payments

3.3 - Pre-measured Sales

3.3.4 - Dividing payment units (7/14)

Payment Unit(s) over \$15,000 in value may be divided at the request of the Purchaser and upon approval of the Unit Manager. Dividing Payment Units is a contract modification which requires a Timber Sale Contract Supplement.

4 - Transportation

4.1 - Construction

4.1.6 - Road construction (1/09)

Construction of new roads or improvements of existing roads shall be done in such a way as to minimize the environmental and visual impacts. Merchantable trees shall be cut and utilized unless otherwise directed. Non-merchantable trees shall be severed and laid flat on the ground. Slash shall be scattered, and not left in windrows and kept a minimum of 10 feet back from the road edge. Stumps shall be set upright, not left on edge, and be moved at least 10 feet away from the road edge. Disturbed soil shall be feathered into the woods and not left in berms or windrows.

4.1.7 - Road closure (10/11)

All new roads built into the sale must be blocked to vehicle traffic upon completion of the sale. Overgrown roads that are reopened shall be considered new roads. In general, this will require constructing a four (4') foot high berm of stumps and logs covered with earth. These roads must be rendered impassable to cars and trucks. Temporary berms may be required if no sale activity occurs for 30 or more consecutive days.

5 - Operations

5.2 - Conduct of Operations

5.2.2 - Hazard Trees/Snags

5.2.2.1 - Den trees (10/16)

Obvious hollow and/or den trees shall be protected and left standing unless they are a safety hazard.

5.2.4 - Dead and Down Creation

5.2.4.4 - Dead and down creation, grouse (8/13)

To encourage grouse and other wildlife, in Payment Unit(s) 1, 3, and 4, leave one, 8" diameter or larger log-length (8 foot minimum) piece on the ground for every 2 acres and at least six (6) large tops in a single pile and at least one pile per acre. These will be evenly scattered throughout the unit.

5.2.4.7 - Dead and down creation: hare, grouse, deer and other species (5/15)

To improve horizontal cover habitat for snowshoe hare, grouse, deer, and other species, the Purchaser is to push over trees marked with red paint that are over 7 inches at DBH as the cutting progresses through the Payment Unit. These trees should be tipped over with the root ball still attached so the base of the tree is suspended off the ground. The crown of the fallen tree should be at or near ground level after it is pushed over. This only applies to the west side of Payment Units 1, 5 and 8 along the swamp edge. One tree for every 50' will be the maximum number of trees needed for this requirement.

5.2.22 - Operating Caution

5.2.22.1 - Operating caution (6/11)

It is recommended, but not required, that within Payment Unit(s) 1, 3, 4, 5, and 8, cutting and skidding occur during dry summer or frozen winter conditions. The reason for the recommendation is due to seasonally wet soil.

5.2.29 - Shrub protection (9/07)

Do not cut or damage hawthorn, witch-hazel, dogwood or junberry. These woody-shrub plants are highly beneficial to various wildlife species.

5.2.38 - No decking against live trees (2/04)

Cut products may not be decked against unmarked or designated leave trees.

5.2.41 - Snowmobile trail protection (9/11)

Trail 76 is a snowmobile trail and is shown on the Timber Sale Map. Do not cut or damage posts with orange trail markers or traffic control signs. If the trail is used, it must be maintained and restored to a condition equal to or better than before the sale. If the trail road is to be used for hauling during the snowmobile season, then a snow covered base must be left on the trail. The snowmobile trail may only be crossed at right angles. Maintain a 20 foot wide slash, debris, and rut free zone daily using the snowmobile trail as the centerline.

5.4 - Soil Protection

5.4.1 - Rutting restriction, general (7/16)

Operations are to cease immediately if equipment and weather conditions result in rutting of roads and/or skid trails which is 12 inches or greater in depth and 50 feet in length. The Unit Manager or his/her representative may restrict hauling and/or skidding if ruts exceed the specified depth. With the Unit Manager or his/her representative's approval, the Purchaser may return to the area when the risk of rutting has decreased.

6 - Safety and Fire Prevention

6.2 - Signing

6.2.1 - Road posting (9/09)

The Purchaser is responsible for posting and maintaining caution signs on Riverview Rd. prior to beginning operations. The road must be posted at appropriate distances from the sale area to warn of logging activity and truck traffic. Signs must be removed when harvest operations are suspended or completed. The Purchaser will provide these signs.

6.2.2 - Snowmobile trail posting (8/09)

The Purchaser is responsible for posting and maintaining caution signs on Trail 76 prior to beginning operations during the snowmobile season (approximately December 1 to March 31). The trail must be posted at appropriate distances from the sale area to warn of logging activity and truck traffic. Signs must be removed when harvest operations are suspended or completed. The Purchaser will provide these signs.

8 - Performance and Settlement

8.3 - Uncompleted or Terminated Contracts

8.3.1 - Completion of contract, chipping (1/16)

In addition to cutting, all chipping must be completed by the contract expiration date. If chipping has not been completed, an extension fee or damages may be charged per General Condition & Requirement 7.2 and 8.3.



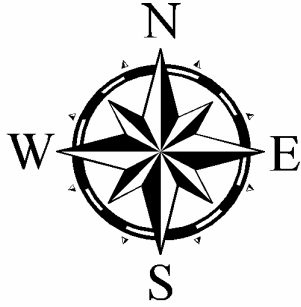
TIMBER SALE MAP

This information provided by authority of Part 525, 1994 PA 451, as amended.

Sale Number	Year
61 - 144	17

Forest Management Unit Traverse City	County Kalkaska	Mapped By Ritchie	Date 08/18/2017	Page 1	of 1
Township 26N	Range 06W	Section(s) and Subdivision(s) Sec. 27	Scale 1:15,840		

Cover Type				Density	
A = Aspen	H = Hemlock	N = Marsh	U = Upland Brush	0 = Non Stocked	5 = Pole Timber Medium
B = Paper Birch	J = Jack Pine	O = Oak	UM = Upland Mixed	1 = Seedling Sapling Poor	6 = Pole Timber Well
C = Cedar	L = Lowland Brush	P = Lowland Poplar	V = Bog or Marsh	2 = Seedling Sapling Medium	7 = Saw Timber Poor
D = Treed Bog	LM = Lowland Mixed	Q = Mixed Swamp Conifer	W = White Pine	3 = Seedling Sapling Well	8 = Saw Timber Medium
E = Swamp Hdwoods	M = Mpl, Bch, Brch	R = Red Pine	X = Non Stocked	4 = Pole Timber Poor	9 = Saw Timber Well
F = Spruce Fir	MC = Mixed Conifer	S = Black Spruce	Z = Water		
G = Grass	MD = Mixed Deciduous	T = Tamarack			

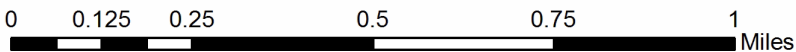
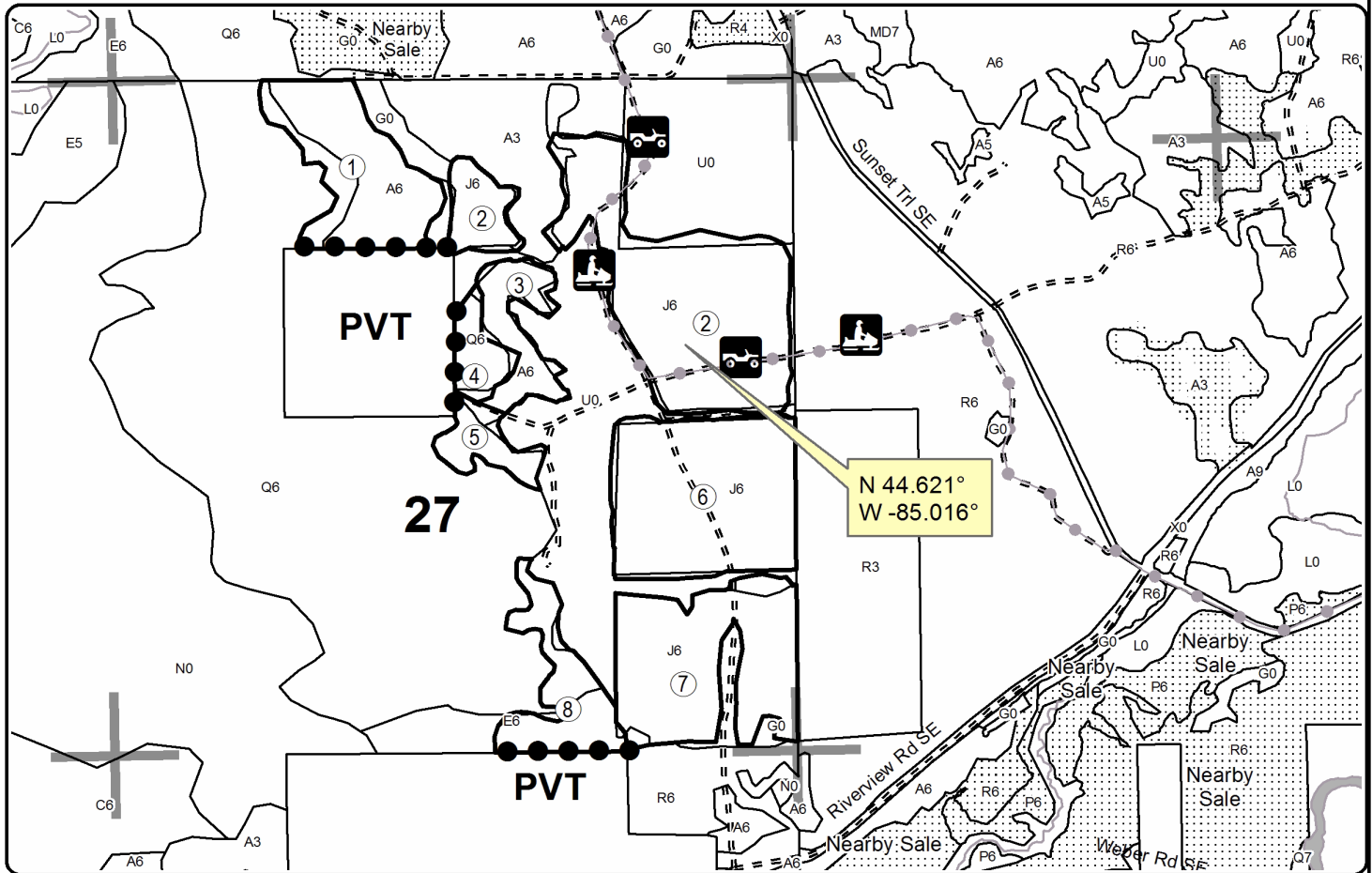


Lost Swamp Compartment 127 197.2 Acres

PU	Acres	PU	Acres
1	25.2	5	6.8
2	57.6	6	40.6
3	10.8	7	35.5
4	5.9	8	14.8

Legend

- Against State (Red)
- Private Line (Blue)
- Nearby Timber Sale
- Section Corners
- Stand Boundaries
- Recreational Trail
- Poor Dirt Roads
- Rivers



Lost Swamp (61-144-17)
; Kalkaska COUNTY

In response to the notice of sale to be held 4:00 p.m. (local time) on January 8, 2018, I am hereby submitting my sealed bid (firm offer) for the following forest products to be cut. Bids for individual species must be at or above the advertised price. All non-responsive bid forms may be rejected.

<u>PRODUCTS & SPECIES</u>	<u>ESTIMATED VOLUME*</u>	<u>ADVERTISED PRICE</u>	<u>BID PRICE/UNIT</u>
Sawtimber			
Jack Pine	59.10 MBF	\$ 26.00/MBF	\$ _____
Quaking Aspen	16.10 MBF	\$ 98.00/MBF	\$ _____
Red Maple	20.60 MBF	\$ 123.00/MBF	\$ _____
White Spruce	13.90 MBF	\$ 42.00/MBF	\$ _____
Pulpwood			
Balsam Fir	184.00 Cords	\$ 10.75/Cord	\$ _____
Black Cherry	27.00 Cords	\$ 17.50/Cord	\$ _____
Jack Pine	1,540.00 Cords	\$ 13.05/Cord	\$ _____
Mixed Aspen	333.00 Cords	\$ 18.25/Cord	\$ _____
N. White Cedar	48.00 Cords	\$ 17.65/Cord	\$ _____
Paper Birch	13.00 Cords	\$ 17.15/Cord	\$ _____
Red Maple	97.00 Cords	\$ 17.50/Cord	\$ _____
Red Oak	7.00 Cords	\$ 11.30/Cord	\$ _____
Tamarack	12.00 Cords	\$ 30.25/Cord	\$ _____
White Spruce	357.00 Cords	\$ 19.45/Cord	\$ _____

*The volumes are statistically estimated within plus (+) or minus (-) 12.87 percent. These estimated volumes are final and not subject to adjustment. Prospective bidders are urged to examine this timber and to make their own estimates of quantity and quality.

I understand that any or all bids may be rejected. All bids must be signed and all bid items must be bid or the bid form may be rejected. I also understand that consideration and awarding a contract will be based upon my past performance and ability to complete the contract based upon equipment and staffing subject to my control.

FEDERAL ID: ____ - ____ - ____ or SOCIAL SECURITY NUMBER: ____ - ____ - ____

Company or individual bidding: _____

Company representative's name: _____

Address: _____

City: _____ State: _____ Zip: _____

IF AVAILABLE, PLEASE PLACE THE PERSONALIZED LABEL FROM YOUR PROSPECTUS IN THE ABOVE BOX.

Individual or company representative's signature: _____ Date: _____

Phone number : _____ Email (optional): _____

THE WINNING BIDDER MUST COMPLETE THE VERIFICATION OF WORKER'S DISABILITY COMPENSATION ACT COMPLIANCE (ON REVERSE SIDE IF DOUBLE SIDED) WITHIN 21 DAYS OF SALE AWARD DATE



FOR DEPARTMENT USE ONLY
Sale Number (XX - XXX - XX - XX)
Forest Management Unit:

TIMBER SALE VERIFICATION OF WORKER'S DISABILITY COMPENSATION ACT COMPLIANCE

*As required by Act 317, P.A. 1969 (Worker's Compensation) and
Part 5 of Act 451 of 1994, as amended.*

VERIFICATION OF WORKER'S DISABILITY COMPENSATION ACT COMPLIANCE

- This verification must be completed and submitted within 21 days of contract award and prior to the issuance of the timber sale contract.
- In addition, if boxes 2B or 2C are checked, then Notice of Exclusion or Certificate of Insurance must be submitted within twenty-one (21) days of the contract award and prior to the issuance of the timber sale contract.
- All information must be typed or printed except for written signatures.

Please Check Appropriate Categories:

1. My business is organized as (you **must** check one of the boxes below):
 - A. Sole Proprietorship (individual)
 - B. Partnership
 - C. Corporation
2. You **must** check one of the boxes below:
 - A. I certify my business is a sole proprietorship and it has no employees but the sole proprietor. I am not subject to the Worker's Compensation Laws.
 - B. I certify my business has satisfied its obligation to the Worker's Compensation Act through the use of an approved Notice of Exclusion (BWC-337, Rev. 5/96). I will provide a copy of the Notice of Exclusion within 21 days of the contract award. (For questions or a copy of the BWC-337, please call the Worker's Compensation Bureau at 517-322-1195).
 - C. I certify my business has a Worker's Compensation Policy. I will provide an original Certificate of Insurance within twenty-one (21) days of the contract award.
3. If you have checked item 2(A) or 2(B), you **must** indicate the number of **both** full-time and part-time employees, other than yourself, including family members and active partners (if none, you must enter "0").

_____ Full-time Employees

_____ Part-time Employees

Name of Business		Federal ID (or) Social Security No.	
Address		Telephone ()	
City	State	ZIP	

I hereby certify that the above information is true and correct. I agree to notify the Michigan DNR of any changes that occur in factors affecting my coverage during any of my present and future operations.

Signature of Owner or Authorized Representative

Title

Date

Please complete the "SEALED BID" information on the next page

Buck 44 East (61-141-17)
; Kalkaska COUNTY

In response to the notice of sale to be held 4:00 p.m. (local time) on January 8, 2018, I am hereby submitting my sealed bid (firm offer) for the following forest products to be cut. Bids for individual species must be at or above the advertised price. All non-responsive bid forms may be rejected.

<u>PRODUCTS & SPECIES</u>	<u>ESTIMATED VOLUME*</u>	<u>ADVERTISED PRICE</u>	<u>BID PRICE/UNIT</u>
Sawtimber			
Mixed Aspen	51.20 MBF	\$ 113.00/MBF	\$ _____
Red Maple	3.30 MBF	\$ 142.00/MBF	\$ _____
Red Oak	114.80 MBF	\$ 171.00/MBF	\$ _____
Red Pine	1,651.20 MBF	\$ 124.00/MBF	\$ _____
White Oak	30.20 MBF	\$ 52.00/MBF	\$ _____
White Pine	2.10 MBF	\$ 73.00/MBF	\$ _____
Pulpwood			
Jack Pine	87.00 Cords	\$ 15.05/Cord	\$ _____
Mixed Aspen	1,854.00 Cords	\$ 21.05/Cord	\$ _____
Mixed Oak	632.00 Cords	\$ 13.05/Cord	\$ _____
Red Maple	308.00 Cords	\$ 20.20/Cord	\$ _____
Red Pine	932.00 Cords	\$ 45.80/Cord	\$ _____
White Pine	29.00 Cords	\$ 14.75/Cord	\$ _____

*The volumes are statistically estimated within plus (+) or minus (-) 9.20 percent. These estimated volumes are final and not subject to adjustment. Prospective bidders are urged to examine this timber and to make their own estimates of quantity and quality.

I understand that any or all bids may be rejected. All bids must be signed and all bid items must be bid or the bid form may be rejected. I also understand that consideration and awarding a contract will be based upon my past performance and ability to complete the contract based upon equipment and staffing subject to my control.

FEDERAL ID: _____ - _____ or SOCIAL SECURITY NUMBER: _____ - _____ - _____

Company or individual bidding: _____

Company representative's name: _____

Address: _____

City: _____ State: _____ Zip: _____

IF AVAILABLE, PLEASE PLACE THE PERSONALIZED LABEL FROM YOUR PROSPECTUS IN THE ABOVE BOX.

Individual or company representative's signature: _____ Date: _____

Phone number : _____ Email (optional): _____

THE WINNING BIDDER MUST COMPLETE THE VERIFICATION OF WORKER'S DISABILITY COMPENSATION ACT COMPLIANCE (ON REVERSE SIDE IF DOUBLE SIDED) WITHIN 21 DAYS OF SALE AWARD DATE



FOR DEPARTMENT USE ONLY
Sale Number (XX - XXX - XX - XX)
Forest Management Unit:

TIMBER SALE VERIFICATION OF WORKER'S DISABILITY COMPENSATION ACT COMPLIANCE

*As required by Act 317, P.A. 1969 (Worker's Compensation) and
Part 5 of Act 451 of 1994, as amended.*

VERIFICATION OF WORKER'S DISABILITY COMPENSATION ACT COMPLIANCE

- This verification must be completed and submitted within 21 days of contract award and prior to the issuance of the timber sale contract.
- In addition, if boxes 2B or 2C are checked, then Notice of Exclusion or Certificate of Insurance must be submitted within twenty-one (21) days of the contract award and prior to the issuance of the timber sale contract.
- All information must be typed or printed except for written signatures.

Please Check Appropriate Categories:

1. My business is organized as (you **must** check one of the boxes below):
 - A. Sole Proprietorship (individual)
 - B. Partnership
 - C. Corporation
2. You **must** check one of the boxes below:
 - A. I certify my business is a sole proprietorship and it has no employees but the sole proprietor. I am not subject to the Worker's Compensation Laws.
 - B. I certify my business has satisfied its obligation to the Worker's Compensation Act through the use of an approved Notice of Exclusion (BWC-337, Rev. 5/96). I will provide a copy of the Notice of Exclusion within 21 days of the contract award. (For questions or a copy of the BWC-337, please call the Worker's Compensation Bureau at 517-322-1195).
 - C. I certify my business has a Worker's Compensation Policy. I will provide an original Certificate of Insurance within twenty-one (21) days of the contract award.
3. If you have checked item 2(A) or 2(B), you **must** indicate the number of **both** full-time and part-time employees, other than yourself, including family members and active partners (if none, you must enter "0").

_____ Full-time Employees

_____ Part-time Employees

Name of Business		Federal ID (or) Social Security No.	
Address		Telephone ()	
City	State	ZIP	

I hereby certify that the above information is true and correct. I agree to notify the Michigan DNR of any changes that occur in factors affecting my coverage during any of my present and future operations.

Signature of Owner or Authorized Representative

Title

Date

Please complete the "SEALED BID" information on the next page

Buck 44 West (61-143-17)
; Kalkaska COUNTY

In response to the notice of sale to be held 4:00 p.m. (local time) on January 8, 2018, I am hereby submitting my sealed bid (firm offer) for the following forest products to be cut. Bids for individual species must be at or above the advertised price. All non-responsive bid forms may be rejected.

<u>PRODUCTS & SPECIES</u>	<u>ESTIMATED VOLUME*</u>	<u>ADVERTISED PRICE</u>	<u>BID PRICE/UNIT</u>
Sawtimber			
BI/R/Hybrid Oak	10.70 MBF	\$ 104.00/MBF	\$ _____
Mixed Aspen	251.40 MBF	\$ 105.00/MBF	\$ _____
Red Maple	9.40 MBF	\$ 132.00/MBF	\$ _____
Red Oak	282.80 MBF	\$ 160.00/MBF	\$ _____
Red Pine	37.90 MBF	\$ 116.00/MBF	\$ _____
White Oak	59.70 MBF	\$ 48.00/MBF	\$ _____
White Pine	6.50 MBF	\$ 68.00/MBF	\$ _____
Pulpwood			
Jack Pine	723.00 Cords	\$ 14.05/Cord	\$ _____
Misc. Species 2	60.00 Cords	\$ 12.20/Cord	\$ _____
Mixed Aspen	2,496.00 Cords	\$ 19.65/Cord	\$ _____
Mixed Hardwood	869.00 Cords	\$ 18.85/Cord	\$ _____
Mixed Oak	1,788.00 Cords	\$ 12.20/Cord	\$ _____
Red Pine	52.00 Cords	\$ 42.75/Cord	\$ _____
White Pine	138.00 Cords	\$ 13.75/Cord	\$ _____

*The volumes are statistically estimated within plus (+) or minus (-) 8.54 percent. These estimated volumes are final and not subject to adjustment. Prospective bidders are urged to examine this timber and to make their own estimates of quantity and quality.

I understand that any or all bids may be rejected. All bids must be signed and all bid items must be bid or the bid form may be rejected. I also understand that consideration and awarding a contract will be based upon my past performance and ability to complete the contract based upon equipment and staffing subject to my control.

FEDERAL ID: _____ or SOCIAL SECURITY NUMBER: _____

Company or individual bidding: _____

Company representative's name: _____

Address: _____

City: _____ State: _____ Zip: _____

IF AVAILABLE, PLEASE PLACE THE PERSONALIZED LABEL FROM YOUR PROSPECTUS IN THE ABOVE BOX.

Individual or company representative's signature: _____ Date: _____

Phone number : _____ Email (optional): _____

THE WINNING BIDDER MUST COMPLETE THE VERIFICATION OF WORKER'S DISABILITY COMPENSATION ACT COMPLIANCE (ON REVERSE SIDE IF DOUBLE SIDED) WITHIN 21 DAYS OF SALE AWARD DATE



FOR DEPARTMENT USE ONLY
Sale Number (XX - XXX - XX - XX)
Forest Management Unit:

TIMBER SALE VERIFICATION OF WORKER'S DISABILITY COMPENSATION ACT COMPLIANCE

*As required by Act 317, P.A. 1969 (Worker's Compensation) and
Part 5 of Act 451 of 1994, as amended.*

VERIFICATION OF WORKER'S DISABILITY COMPENSATION ACT COMPLIANCE

- This verification must be completed and submitted within 21 days of contract award and prior to the issuance of the timber sale contract.
- In addition, if boxes 2B or 2C are checked, then Notice of Exclusion or Certificate of Insurance must be submitted within twenty-one (21) days of the contract award and prior to the issuance of the timber sale contract.
- All information must be typed or printed except for written signatures.

Please Check Appropriate Categories:

1. My business is organized as (you **must** check one of the boxes below):
 - A. Sole Proprietorship (individual)
 - B. Partnership
 - C. Corporation

2. You **must** check one of the boxes below:
 - A. I certify my business is a sole proprietorship and it has no employees but the sole proprietor. I am not subject to the Worker's Compensation Laws.
 - B. I certify my business has satisfied its obligation to the Worker's Compensation Act through the use of an approved Notice of Exclusion (BWC-337, Rev. 5/96). I will provide a copy of the Notice of Exclusion within 21 days of the contract award. (For questions or a copy of the BWC-337, please call the Worker's Compensation Bureau at 517-322-1195).
 - C. I certify my business has a Worker's Compensation Policy. I will provide an original Certificate of Insurance within twenty-one (21) days of the contract award.

3. If you have checked item 2(A) or 2(B), you **must** indicate the number of **both** full-time and part-time employees, other than yourself, including family members and active partners (if none, you must enter "0").

_____ Full-time Employees

_____ Part-time Employees

Name of Business		Federal ID (or) Social Security No.	
Address		Telephone ()	
City	State	ZIP	

I hereby certify that the above information is true and correct. I agree to notify the Michigan DNR of any changes that occur in factors affecting my coverage during any of my present and future operations.

Signature of Owner or Authorized Representative

Title

Date

Please complete the "SEALED BID" information on the next page

Confusing Corners Mix (61-132-17)
; Kalkaska COUNTY

In response to the notice of sale to be held 4:00 p.m. (local time) on January 8, 2018, I am hereby submitting my sealed bid (firm offer) for the following forest products to be cut. Bids for individual species must be at or above the advertised price. All non-responsive bid forms may be rejected.

<u>PRODUCTS & SPECIES</u>	<u>ESTIMATED VOLUME*</u>	<u>ADVERTISED PRICE</u>	<u>BID PRICE/UNIT</u>
Sawtimber			
Red Maple	10.00 MBF	\$ 66.00/MBF	\$ _____
Sugar Maple	4.50 MBF	\$ 135.00/MBF	\$ _____
White Pine	14.90 MBF	\$ 34.00/MBF	\$ _____
Pulpwood			
Balsam Fir	2.00 Cords	\$ 5.80/Cord	\$ _____
Jack Pine	1.00 Cords	\$ 7.05/Cord	\$ _____
Mixed Aspen	179.00 Cords	\$ 9.80/Cord	\$ _____
Mixed Hardwood	325.00 Cords	\$ 9.40/Cord	\$ _____
Mixed Spruce	8.00 Cords	\$ 10.50/Cord	\$ _____
Red Pine	2.00 Cords	\$ 21.35/Cord	\$ _____
White Pine	95.00 Cords	\$ 6.90/Cord	\$ _____

*The volumes are statistically estimated within plus (+) or minus (-) 17.96 percent. These estimated volumes are final and not subject to adjustment. Prospective bidders are urged to examine this timber and to make their own estimates of quantity and quality.

I understand that any or all bids may be rejected. All bids must be signed and all bid items must be bid or the bid form may be rejected. I also understand that consideration and awarding a contract will be based upon my past performance and ability to complete the contract based upon equipment and staffing subject to my control.

FEDERAL ID: _____ or SOCIAL SECURITY NUMBER: _____

Company or individual bidding: _____

Company representative's name: _____

Address: _____

City: _____ State: _____ Zip: _____

IF AVAILABLE, PLEASE PLACE THE PERSONALIZED LABEL FROM YOUR PROSPECTUS IN THE ABOVE BOX.

Individual or company representative's signature: _____ Date: _____

Phone number : _____ Email (optional): _____

THE WINNING BIDDER MUST COMPLETE THE VERIFICATION OF WORKER'S DISABILITY COMPENSATION ACT COMPLIANCE (ON REVERSE SIDE IF DOUBLE SIDED) WITHIN 21 DAYS OF SALE AWARD DATE



FOR DEPARTMENT USE ONLY
Sale Number (XX - XXX - XX - XX)
Forest Management Unit:

TIMBER SALE VERIFICATION OF WORKER'S DISABILITY COMPENSATION ACT COMPLIANCE

*As required by Act 317, P.A. 1969 (Worker's Compensation) and
Part 5 of Act 451 of 1994, as amended.*

VERIFICATION OF WORKER'S DISABILITY COMPENSATION ACT COMPLIANCE

- This verification must be completed and submitted within 21 days of contract award and prior to the issuance of the timber sale contract.
- In addition, if boxes 2B or 2C are checked, then Notice of Exclusion or Certificate of Insurance must be submitted within twenty-one (21) days of the contract award and prior to the issuance of the timber sale contract.
- All information must be typed or printed except for written signatures.

Please Check Appropriate Categories:

1. My business is organized as (you **must** check one of the boxes below):
 - A. Sole Proprietorship (individual)
 - B. Partnership
 - C. Corporation

2. You **must** check one of the boxes below:
 - A. I certify my business is a sole proprietorship and it has no employees but the sole proprietor. I am not subject to the Worker's Compensation Laws.
 - B. I certify my business has satisfied its obligation to the Worker's Compensation Act through the use of an approved Notice of Exclusion (BWC-337, Rev. 5/96). I will provide a copy of the Notice of Exclusion within 21 days of the contract award. (For questions or a copy of the BWC-337, please call the Worker's Compensation Bureau at 517-322-1195).
 - C. I certify my business has a Worker's Compensation Policy. I will provide an original Certificate of Insurance within twenty-one (21) days of the contract award.

3. If you have checked item 2(A) or 2(B), you **must** indicate the number of **both** full-time and part-time employees, other than yourself, including family members and active partners (if none, you must enter "0").

_____ Full-time Employees

_____ Part-time Employees

Name of Business		Federal ID (or) Social Security No.	
Address		Telephone ()	
City	State	ZIP	

I hereby certify that the above information is true and correct. I agree to notify the Michigan DNR of any changes that occur in factors affecting my coverage during any of my present and future operations.

Signature of Owner or Authorized Representative

Title

Date

Please complete the "SEALED BID" information on the next page

Wild Wasp Red Pine (61-140-17)
; Kalkaska COUNTY

In response to the notice of sale to be held 4:00 p.m. (local time) on January 8, 2018, I am hereby submitting my sealed bid (firm offer) for the following forest products to be cut. Bids for individual species must be at or above the advertised price. All non-responsive bid forms may be rejected.

<u>PRODUCTS & SPECIES</u>	<u>ESTIMATED VOLUME*</u>	<u>ADVERTISED PRICE</u>	<u>BID PRICE/UNIT</u>
Sawtimber			
Red Pine	33.80 MBF	\$ 58.00/MBF	\$ _____
Pulpwood			
Jack Pine	3.00 Cords	\$ 7.05/Cord	\$ _____
Red Pine	228.00 Cords	\$ 21.35/Cord	\$ _____

*The volumes are statistically estimated within plus (+) or minus (-) 45.69 percent. These estimated volumes are final and not subject to adjustment. Prospective bidders are urged to examine this timber and to make their own estimates of quantity and quality.

I understand that any or all bids may be rejected. All bids must be signed and all bid items must be bid or the bid form may be rejected. I also understand that consideration and awarding a contract will be based upon my past performance and ability to complete the contract based upon equipment and staffing subject to my control.

FEDERAL ID: _____ or SOCIAL SECURITY NUMBER: _____

Company or individual bidding: _____

Company representative's name: _____

Address: _____

City: _____ State: _____ Zip: _____

IF AVAILABLE, PLEASE PLACE THE PERSONALIZED LABEL FROM YOUR PROSPECTUS IN THE ABOVE BOX.

Individual or company representative's signature: _____ Date: _____

Phone number : _____ Email (optional): _____

THE WINNING BIDDER MUST COMPLETE THE VERIFICATION OF WORKER'S DISABILITY COMPENSATION ACT COMPLIANCE (ON REVERSE SIDE IF DOUBLE SIDED) WITHIN 21 DAYS OF SALE AWARD DATE



FOR DEPARTMENT USE ONLY
Sale Number (XX – XXX – XX – XX)
Forest Management Unit:

TIMBER SALE VERIFICATION OF WORKER'S DISABILITY COMPENSATION ACT COMPLIANCE

*As required by Act 317, P.A. 1969 (Worker's Compensation) and
Part 5 of Act 451 of 1994, as amended.*

VERIFICATION OF WORKER'S DISABILITY COMPENSATION ACT COMPLIANCE

- This verification must be completed and submitted within 21 days of contract award and prior to the issuance of the timber sale contract.
- In addition, if boxes 2B or 2C are checked, then Notice of Exclusion or Certificate of Insurance must be submitted within twenty-one (21) days of the contract award and prior to the issuance of the timber sale contract.
- All information must be typed or printed except for written signatures.

Please Check Appropriate Categories:

1. My business is organized as (you **must** check one of the boxes below):
 - A. Sole Proprietorship (individual)
 - B. Partnership
 - C. Corporation

2. You **must** check one of the boxes below:
 - A. I certify my business is a sole proprietorship and it has no employees but the sole proprietor. I am not subject to the Worker's Compensation Laws.
 - B. I certify my business has satisfied its obligation to the Worker's Compensation Act through the use of an approved Notice of Exclusion (BWC-337, Rev. 5/96). I will provide a copy of the Notice of Exclusion within 21 days of the contract award. (For questions or a copy of the BWC-337, please call the Worker's Compensation Bureau at 517-322-1195).
 - C. I certify my business has a Worker's Compensation Policy. I will provide an original Certificate of Insurance within twenty-one (21) days of the contract award.

3. If you have checked item 2(A) or 2(B), you **must** indicate the number of **both** full-time and part-time employees, other than yourself, including family members and active partners (if none, you must enter "0").

_____ Full-time Employees

_____ Part-time Employees

Name of Business		Federal ID (or) Social Security No.	
Address		Telephone ()	
City	State	ZIP	

I hereby certify that the above information is true and correct. I agree to notify the Michigan DNR of any changes that occur in factors affecting my coverage during any of my present and future operations.

Signature of Owner or Authorized Representative

Title

Date

Please complete the "SEALED BID" information on the next page

Red Pine Colored Glasses (61-127-17)
; Kalkaska COUNTY

In response to the notice of sale to be held 4:00 p.m. (local time) on January 8, 2018, I am hereby submitting my sealed bid (firm offer) for the following forest products to be cut. Bids for individual species must be at or above the advertised price. All non-responsive bid forms may be rejected.

<u>PRODUCTS & SPECIES</u>	<u>ESTIMATED VOLUME*</u>	<u>ADVERTISED PRICE</u>	<u>BID PRICE/UNIT</u>
Sawtimber			
B. T. Aspen	0.80 MBF	\$ 53.00/MBF	\$ _____
Red Maple	3.90 MBF	\$ 66.00/MBF	\$ _____
Red Oak	55.20 MBF	\$ 80.00/MBF	\$ _____
Red Pine	54.50 MBF	\$ 58.00/MBF	\$ _____
White Oak	26.90 MBF	\$ 24.00/MBF	\$ _____
White Pine	53.10 MBF	\$ 34.00/MBF	\$ _____
Pulpwood			
B. T. Aspen	180.00 Cords	\$ 9.80/Cord	\$ _____
Black Cherry	13.00 Cords	\$ 9.40/Cord	\$ _____
Jack Pine	809.00 Cords	\$ 7.05/Cord	\$ _____
Quaking Aspen	10.00 Cords	\$ 9.80/Cord	\$ _____
Red Maple	103.00 Cords	\$ 9.40/Cord	\$ _____
Red Oak	262.00 Cords	\$ 6.10/Cord	\$ _____
Red Pine	169.00 Cords	\$ 21.35/Cord	\$ _____
White Oak	109.00 Cords	\$ 6.10/Cord	\$ _____
White Pine	234.00 Cords	\$ 6.90/Cord	\$ _____

*The volumes are statistically estimated within plus (+) or minus (-) 10.98 percent. These estimated volumes are final and not subject to adjustment. Prospective bidders are urged to examine this timber and to make their own estimates of quantity and quality.

I understand that any or all bids may be rejected. All bids must be signed and all bid items must be bid or the bid form may be rejected. I also understand that consideration and awarding a contract will be based upon my past performance and ability to complete the contract based upon equipment and staffing subject to my control.

FEDERAL ID: _____ or SOCIAL SECURITY NUMBER: _____

Company or individual bidding: _____

Company representative's name: _____

Address: _____

City: _____ State: _____ Zip: _____

IF AVAILABLE, PLEASE PLACE THE PERSONALIZED LABEL FROM YOUR PROSPECTUS IN THE ABOVE BOX.

Individual or company representative's signature: _____ Date: _____

Phone number : _____ Email (optional): _____

THE WINNING BIDDER MUST COMPLETE THE VERIFICATION OF WORKER'S DISABILITY COMPENSATION ACT COMPLIANCE (ON REVERSE SIDE IF DOUBLE SIDED) WITHIN 21 DAYS OF SALE AWARD DATE



FOR DEPARTMENT USE ONLY
Sale Number (XX – XXX – XX – XX)
Forest Management Unit:

TIMBER SALE VERIFICATION OF WORKER'S DISABILITY COMPENSATION ACT COMPLIANCE

*As required by Act 317, P.A. 1969 (Worker's Compensation) and
Part 5 of Act 451 of 1994, as amended.*

VERIFICATION OF WORKER'S DISABILITY COMPENSATION ACT COMPLIANCE

- This verification must be completed and submitted within 21 days of contract award and prior to the issuance of the timber sale contract.
- In addition, if boxes 2B or 2C are checked, then Notice of Exclusion or Certificate of Insurance must be submitted within twenty-one (21) days of the contract award and prior to the issuance of the timber sale contract.
- All information must be typed or printed except for written signatures.

Please Check Appropriate Categories:

1. My business is organized as (you **must** check one of the boxes below):
 - A. Sole Proprietorship (individual)
 - B. Partnership
 - C. Corporation

2. You **must** check one of the boxes below:
 - A. I certify my business is a sole proprietorship and it has no employees but the sole proprietor. I am not subject to the Worker's Compensation Laws.
 - B. I certify my business has satisfied its obligation to the Worker's Compensation Act through the use of an approved Notice of Exclusion (BWC-337, Rev. 5/96). I will provide a copy of the Notice of Exclusion within 21 days of the contract award. (For questions or a copy of the BWC-337, please call the Worker's Compensation Bureau at 517-322-1195).
 - C. I certify my business has a Worker's Compensation Policy. I will provide an original Certificate of Insurance within twenty-one (21) days of the contract award.

3. If you have checked item 2(A) or 2(B), you **must** indicate the number of **both** full-time and part-time employees, other than yourself, including family members and active partners (if none, you must enter "0").

_____ Full-time Employees

_____ Part-time Employees

Name of Business		Federal ID (or) Social Security No.	
Address		Telephone ()	
City	State	ZIP	

I hereby certify that the above information is true and correct. I agree to notify the Michigan DNR of any changes that occur in factors affecting my coverage during any of my present and future operations.

Signature of Owner or Authorized Representative

Title

Date

Please complete the "SEALED BID" information on the next page