



**DEPARTMENT OF NATURAL RESOURCES  
STATE OF MICHIGAN**

**TIMBER SALE PROSPECTUS #6132**

SCHEDULED SALE DATE AND TIME: 3:00 p.m. (local time) on May 17, 2018.

LOCATION: NEWBERRY MGMT UNIT, PO BOX 428, 5666 STATE HWY M-123, NEWBERRY, MI 49868.

PROSPECTUS NOTE: The bidder is advised to inspect the sale area and review the location, estimated volumes, operating costs and contract terms of proposed sales. Please be aware that some landowners may request 60 days or more notice for access across their land.

Notice is hereby given that bids will be received by the Unit Manager, NEWBERRY MANAGEMENT UNIT, for certain timber on the following described lands:

West Vermillion Pine/Birch (42-015-17)

Chippewa County, Advertised Price \$66,240.10, 136.4 Acres, Red Pine, White Pine.

SALE NOTE: Within Payment Unit(s) 2, 3, 4 and 5, harvesting is not permitted during the period of April 15 to July 15 due to bark slippage. See Sale Spec 5.2.3.3.

Within Payment Units 1-6, it is recommended that harvesting occur during late fall or frozen winter conditions due to the sandy roads leading to the sale area. See Sale Spec 5.2.22.1.

A snowmobile trail is shown on the Timber Sale Map. See Sale Spec 5.2.41 and 6.2.2 for additional information.

Leisurely Stroll Spruce (42-016-17)

Luce County, Advertised Price \$103,182.10, 299.1 Acres, Paper Birch, Spruce/Fir/Tamarack.

SALE NOTE: The Michigan Department of Transportation (MDOT) must be contacted prior to harvesting timber within the MDOT right-of-way. See Sale Spec 4.3.1.

Harvesting is limited to the period of December 15 to March 15 due to low ground nature of the sale area and access route into the sale. See Sale Spec 5.2.3.1.

## BID INSTRUCTIONS (VER. 11/28/2017):

### 1. Scheduled Bid Location, Date, and Time (2/11)

Bids must be received by the Unit Manager, NEWBERRY OFFICE, PO BOX 428 5666 STATE HWY M-123, NEWBERRY, MI 49868, no later than 3:00 p.m. (local time) on May 17, 2018. For further information concerning this sale, contact Keith Magnusson at 906-293-3293 extension 4740.

### 2. Bidder's Qualifications (5/16)

Purchaser shall obtain workers compensation insurance to cover claims under Michigan's Worker's Disability Compensation Act of 1969 or similar employee benefit act of any other state applicable to an employee. If all or part of a timber sale was prepared by a private contractor, the contractor and that contractor's company are not permitted to bid on the timber sale contract. Bids will not be accepted from individuals or companies appearing on the DNR/FRD No-Bid List. This list contains the names of purchasers who previously failed to execute a contract within 21-days or who have a history of poor performance.

### 3. Preparation of Sealed Bids (5/16)

Bid Forms may be completed online thru Michigan DNR Timber Sale Online Bidding (OLB) at [www.michigan.gov/timberbidding](http://www.michigan.gov/timberbidding) or by completing the hardcopy Bid Form found in the Timber Sale Prospectus. Hardcopy Bid Forms shall be manually signed in ink. Registration in OLB is considered your 'signature' for all bids submitted thru that system. Bid prices must be entered for each species and product in the Bid Price column for all material subject to bidding and all fill-in blanks must be completed. If erasures or other changes appear on the hardcopy Bid Form, each erasure or change must be initialed by the person signing the bid.

### 4. Submission of Sealed Bids (5/16)

Bid forms may be obtained from the Unit Manager or thru OLB. Bids may be submitted hardcopy or thru OLB. All hardcopy bids must be submitted on the bid form and in an envelope clearly identified as described in this section. NOTE: Only one bid form per bid envelope. Sealed bids must be submitted to the Unit office designated in the prospectus and must be submitted at or prior to the time established in the prospectus. The envelope should show on the outside (a) the sale name or number and (b) the date and time of bid opening, as shown in the prospectus. Bids received after the time specified in the sale prospectus are late bids and will be rejected.

It is possible for a bidder to submit multiple bids on a single sale. For example, a bid may be submitted hardcopy and a bid may be submitted thru OLB. Or, two bidders from the same company could both submit bids on the same sale. If this were to happen, the State would accept all bids received and award the contract accordingly. All bidding and contractual requirements would apply to all bids received.

### 5. Public Opening of Sealed Bids (7/16)

If conditions permit, the sealed bids will be publicly opened and posted at the time and place set in the prospectus.

If a bidder, present at a bid opening, has submitted bids on more than one sale, that bidder may withdraw their unopened bid envelopes or announce the withdrawal of their online bid after being declared the successful bidder on one sale.

### 6. Award of Contract (1/11)

Award of the contract will be made to the Bidder whose bid, conforming to the prospectus, is most advantageous to the State of Michigan on the basis of total value at rates bid for the estimated quantities. The State reserves the right to reject any bid or waive any minor irregularity in bids received. A written award mailed (or otherwise furnished) to the successful Bidder shall be deemed to result in a binding contract without further action by either party.

### 7. Down Payment (1/11)

The Bidder to whom award is made must make a down payment within 21 days of the sale award. The amount of the down payment will be calculated as shown in the Bond and Payment Schedule of this prospectus. Only cash may be used to meet this requirement.

### 8. Performance Security (1/11)

As guarantee of faithful performance, a cash bond, certificate of deposit, surety bond or irrevocable letter of credit (LOC) is required within 21 days of the sale award. The amount of the performance security is shown in the Bond and

Payment Schedule of this prospectus. If an LOC or surety is used, the coverage must extend for at least 6 months beyond the contract expiration.

#### 9. Timber Sale Contract (11/17)

Additional conditions and requirements common to all timber sales are listed on the timber sale contract (R4031) and are available on line at [www.michigan.gov/timber](http://www.michigan.gov/timber). Contact the Unit Manager for additional information or a sample contract. Within 21 days of the date of the award letter, the bidder must sign the contract and provide the required down payment, performance security, and verification of worker's disability compensation. The down payment and performance security shall be in accordance with the provisions of the timber sale contract, in the sums stated in this prospectus. If these actions are not taken, then the Bidder, the Bidder's corporation, and the corporation's principals may not be permitted to bid on State timber sales for a period of 1 year. In addition, the Bidder certifies that if awarded this contract, the Bidder will complete the timber sale contract in accordance with its terms and any modifications thereof including requirements to purchase, cut, and remove the included timber by the expiration date.

Payment Unit values in the State Forest Timber Sale Contract are calculated based on the advertised value of the Payment Unit as a percentage of the total advertised value of the contract. The advertised value of each Payment Unit is given in the Description of Timber by Payment Unit table on the Timber Sale Information page. For example, if the value of Payment Unit 1 is advertised as \$1,500 and the total Timber Sale value is advertised as \$10,000, the contract price for Payment Unit 1 will be 15% of the total bid price ( $\$1,500/\$10,000 * 100$ ).

#### 10. Disclaimer of Estimates and Bidder's Warranty of Inspection (7/16)

Before submitting this bid, the Bidder is advised and cautioned to inspect the sale area, review the requirements of the sale contract, and take other steps as may be reasonably necessary to ascertain the location, estimated volumes, construction estimates, and operating costs of the proposed sale. Failure to do so will not relieve the Bidder from responsibility for completing the contract.

The Bidder warrants that this bid is submitted solely on the basis of the Bidder's examination and inspection of the quality and quantity of the timber offered for sale and the Bidder's opinion of the value thereof and the costs of recovery. No reliance should be placed on the State of Michigan's estimates of timber quality, quantity or costs of recovery. Bidder further acknowledges that the State of Michigan: (i) expressly disclaims any warranty of fitness of timber for any purpose; (ii) offers this timber as is without any warranty of quality (merchantability) or quantity and (iii) expressly disclaims any warranty as to the quantity or quality of timber sold.

#### 11. Certification and Chain-of-Custody (10/14)

Unless otherwise indicated in the contract under section 7 – Other Conditions of the Sale Specific Conditions & Requirements, the area encompassed by this timber sale is certified to the standards of the Forest Stewardship Council (FSC) - Certificate #SCS-FM/COC-00090N and the Sustainable Forestry Initiative (SFI) - Certificate # NSF-SFIS-5Y031-SF5. Forest products from this sale may be delivered to the mill as "FSC 100% and / or SFI certified" as long as the contractor hauling the forest products is chain-of-custody (COC) certified or covered under a COC certificate from the destination mill. The purchaser is responsible for maintaining COC after leaving the sale area.

#### 12. Good Neighbor Authority (GNA) Requirements (7/16)

If the name of this timber sales contains the acronym GNA, it is authorized by the Good Neighbor Authority (GNA) and covered by various agreements between the U.S. Forest Service and the State. The timber sale occurs on federal land and the following conditions apply:

GNA contracts on US Forest Service land will not be awarded to purchasers on the Federal list of excluded parties. The System for Award Management (SAM) will be checked for active excluded parties prior to award of contract. In addition, the Bidder to whom award is made must complete an Assurance Regarding Felony Conviction or Tax Delinquent Status for Corporate Applicants (AD-3031).

#### 13. Good Neighbor Authority (GNA) Requirements, con't (9/16)

Bidder certifies, by signing this bid form, that to the best of Bidder's knowledge that the following representations are accurate and complete.

a. That the Bidder and its principals are not presently debarred, suspended, proposed for debarment, declared ineligible, or voluntary excluded from timber sales (covered transactions) by any Federal department or agency.

b. That the Bidder and its principals have not within a 3-year period preceding this bid been convicted of or had a civil judgment rendered against them for commission of fraud or a criminal offense in connection with obtaining, attempting to obtain, or performing a public (Federal, State, or local) transaction or contract under a public transaction; violation of Federal or State antitrust statutes or commission of embezzlement, theft, forgery, bribery, falsification or destruction of records, making false statements, or receiving stolen property.

c. That the Bidder and its principals are not presently indicted for or otherwise criminally or civilly charged by a governmental entity (Federal, State, or local) with commission of any of the offenses enumerated in paragraph b of this certification.

d. That the Bidder and its principals have not within a 3-year period preceding this bid had one or more public transactions (Federal, State, or local) terminated for breach or default of a timber or forest product contract.

Bidders that cannot certify this requirement, in whole or in part, shall submit an explanation with their bid.

KEITH CREAGH

Director

## TIMBER SALE INFORMATION

### West Vermillion Pine/Birch (42-015-17)

Chippewa County (Advertised Price \$66,240.10)

SALE NOTE: Within Payment Unit(s) 2, 3, 4 and 5, harvesting is not permitted during the period of April 15 to July 15 due to bark slippage. See Sale Spec 5.2.3.3.

Within Payment Units 1-6, it is recommended that harvesting occur during late fall or frozen winter conditions due to the sandy roads leading to the sale area. See Sale Spec 5.2.22.1.

A snowmobile trail is shown on the Timber Sale Map. See Sale Spec 5.2.41 and 6.2.2 for additional information.

A timber sale contract for this lump sum, sealed bid timber sale will be awarded to the responsible bidder offering the highest sealed bid price. Bids must be at or above the following advertised price for each species:

<u>PRODUCTS &amp; SPECIES</u>	<u>ESTIMATED UNITS*</u>	<u>ADVERTISED PRICE</u>
Pulpwood		
Balsam Fir	122.00 Cords	\$ 10.90 / Cord
Jack Pine	131.00 Cords	\$ 39.10 / Cord
Paper Birch	123.00 Cords	\$ 17.85 / Cord
Red Maple	78.00 Cords	\$ 15.85 / Cord
Red Pine	745.00 Cords	\$ 62.45 / Cord
White Pine	397.00 Cords	\$ 23.35 / Cord
White Spruce	29.00 Cords	\$ 19.35 / Cord

\* The total volume is statistically estimated within plus (+) or minus (-) 14.27 percent. The estimated units are final and not subject to adjustment. Prospective bidders are urged to examine this timber and to make their own estimates of quantity and quality.

#### **BOND AND PAYMENT SCHEDULE:**

1. A bond in the amount of \$3,312.00 to insure faithful performance of the conditions of the contract will be deposited by the successful bidder within 21 days of the sale award.
2. Cutting in any sale or unit without the required advance payment would be considered a trespass.
3. Total payment must be paid in advance or according to the following schedule:
  - (a) Ten percent (10%) of the sale value must be paid within 21 days of the sale award.
  - (b) The 10% down payment will be credited towards the first unit cut.
  - (c) Payment for each of the following units must be made before cutting begins in that unit:
 

PAYMENT UNIT NUMBER	PERCENT OF TOTAL SALE VALUE
01	21.7%
02	19.7%
03	28.7%
04	14.3%
05	14.5%
06	1.1%
4. If no cutting takes place, the 10% down payment will not be refunded.
5. Operations on the contract issued will terminate on 06/30/2021.

**Description of Timber by Payment Unit (PU)**

PU	MARKET GROUP	PRODUCT	QUANTITY	UNIT	ACRES	ADVERTISE PRICE	
	Balsam Fir	Pulpwood	116.0	Cords			
	Jack Pine		64.0	Cords			
	Paper Birch		101.0	Cords			
	Red Pine		4.0	Cords			
	White Pine		298.0	Cords			
	White Spruce		24.0	Cords			
	Balsam Fir		1.0	Cords			
	Jack Pine		17.0	Cords			
	Paper Birch		2.0	Cords			
	Red Pine		189.0	Cords			
	White Pine		22.0	Cords			
	White Spruce		1.0	Cords			
	Balsam Fir		1.0	Cords			
	Jack Pine		24.0	Cords			
	Paper Birch		3.0	Cords			
	Red Pine		275.0	Cords			
	White Pine		32.0	Cords			
	White Spruce		1.0	Cords			
	Jack Pine		12.0	Cords			
	Paper Birch		2.0	Cords			
	Red Pine		137.0	Cords			
	White Pine		16.0	Cords			
	Jack Pine		12.0	Cords			
	Paper Birch		2.0	Cords			
	Red Pine		140.0	Cords			
	White Pine		16.0	Cords			
	Balsam Fir		4.0	Cords			
	Jack Pine		2.0	Cords			
	Paper Birch		13.0	Cords			
	White Pine		13.0	Cords			
	White Spruce		3.0	Cords			
	Red Maple		Pulpwood	72.0	Cords	36.2	
2	Red Maple		Pulpwood	1.0	Cords	24.6	\$13,063.25
3	Red Maple	Pulpwood	1.0	Cords	35.7	\$18,959.00	
4	Red Maple	Pulpwood	1.0	Cords	17.8	\$9,450.00	
5	Red Maple	Pulpwood	1.0	Cords	18.2	\$9,637.35	
6	Red Maple	Pulpwood	2.0	Cords	3.9	\$747.15	
TOTAL:			1,625.0	Cords			

## Sale Specific Conditions & Requirements

**Sale Name: West Vermillion Pine/Birch**

**Sale Number: 42-015-17 Seq#: 1**

### 1 - Sale Area

#### 1.2 - Boundaries

##### 1.2.1 - Painted boundaries (1/14)

The sale boundary and Payment Unit boundaries are marked and identified by red, blue and yellow paint. Exterior sale boundary lines against private are marked with blue paint. Exterior sale boundary lines against state are marked with red paint. Interior Payment Unit boundaries are marked with red or yellow paint (see Timber Sale Map). The painted boundary line trees are not Included Timber and are to be protected.

### 2 - Timber Specifications

#### 2.1 - Included Timber

##### 2.1.2 - Clearcut unit(s) w/o unmerchantable trees (8/11)

Within Payment Unit(s) 1 and 6, cut all trees which meet minimum piece specifications in 2.2 Utilization, except do not cut any oak, or trees marked with green paint.

##### 2.1.3 - Cut tree marked unit(s) (12/08)

Within Payment Unit(s) 2, 3, 4 and 5, all trees are designated for cutting when marked with orange paint above and below stump height, regardless of merchantability.

#### 2.2 - Utilization

##### 2.2.4 - Skidding length (2/14)

Within Payment Units 2, 3, 4 and 5, skidding of unlimbed tops or lengths over 17 feet is not permissible unless approved by the Unit Manager or his/her representative.

### 4 - Transportation

#### 4.1 - Construction

##### 4.1.6 - Road construction (1/09)

Construction of new roads or improvements of existing roads shall be done in such a way as to minimize the environmental and visual impacts. Merchantable trees shall be cut and utilized unless otherwise directed. Non-merchantable trees shall be severed and laid flat on the ground. Slash shall be scattered, and not left in windrows and kept a minimum of 10 feet back from the road edge. Stumps shall be set upright, not left on edge, and be moved at least 10 feet away from the road edge. Disturbed soil shall be feathered into the woods and not left in berms or windrows.

##### 4.1.7 - Road closure (10/11)

All new roads built into the sale must be blocked to vehicle traffic upon completion of the sale. Overgrown and/or abandoned roads that are reopened shall be considered new roads. In general, this will require constructing a four (4') foot high berm of stumps and logs covered with earth at the beginning of any new road course. Stumps and brush must be placed along the road for a minimum of 200 feet, effectively obliterating it. These roads must be rendered impassable to cars, trucks and ORV's. Stumps from road building and landing construction can be reserved to meet the above road closure specifications. Temporary berms may be required if no sale activity occurs for 30 or more consecutive days. Contact the sale administrator for specific details of design and placement.

#### 4.2 - Maintenance

##### 4.2.1 - Hauling restriction (12/08)

Hauling may be restricted on access roads leading to the sale area by the Unit Manager or his/her representative. The restriction may occur during any period during which the condition of the road(s) is deemed unacceptable by the sale administrator. Examples of these conditions would be wet weather, spring break up, or prolonged dry periods during which the sand roads become impassable to conventional vehicles. The Chippewa County Road Commission should be contacted prior to trucking on the Vermillion Road to ensure that no permits are necessary to haul, or that restrictions are not in effect.

#### 4.2.4 - Grading (10/16)

For completion of the sale, state forest roads must be graded. In general, this will require a road grader or bull dozer to shape up the roads after forest products have been hauled off site. The grading equipment to be used must be approved by the Unit Manager or his/her representative. Within 30 days of completion of hauling, or if no hauling occurs for 30 days, roads must be graded and leveled back to pre-harvest conditions. This includes cleaning of drainage areas, grading, crowning and filling with gravel, if necessary. Wet weather conditions may extend the time needed for roads to dry out and be returned to a condition prior to harvesting operations. Contact sale administrator for directions.

#### 4.2.5 - Two wheel drive condition (2/04)

All existing trail roads on and adjacent to the sale area must be passable by two-wheel drive traffic for the duration of the sale.

### 5 - Operations

#### 5.1 - Notification

##### 5.1.4 - Post-sale conference (10/16)

A post-sale conference on site between the Purchaser and sale administrator is required 5 days prior to the completion of active logging operations to determine clean-up and repair of landings, road edges, and the fulfillment of other contract specifications. It is recommended that this conference take place prior to equipment being moved from the site.

#### 5.2 - Conduct of Operations

##### 5.2.1 - Slash

###### 5.2.1.8 - Slash height (12/08)

No slash or tree tops may exceed 36 inches in height.

##### 5.2.2 - Hazard Trees/Snags

###### 5.2.2.1 - Den trees (10/16)

Obvious hollow and/or den trees shall be protected and left standing unless they are a safety hazard.

##### 5.2.3 - Operating Restrictions

###### 5.2.3.3 - Bark slippage restriction (3/09)

Within Payment Unit(s) 2, 3, 4 and 5, unless changed by written agreement, cutting and skidding are not permitted during the period of April 15 to July 15. This restriction is because of bark slippage.

###### 5.2.3.6 - Bark beetle restriction (12/08)

In the event drought creates a high risk of pine bark beetle infestation, pine is not to be cut during the period March 1 through July 1, unless all portions of trees greater than two inches in diameter are removed from the sale area, reduced to chips, or treated to the satisfaction of the Unit Manager or his/her representative, within fifteen days of being severed from the stump. Pine log decks, pulpwood piles and treetops that are piled for chipping in the fall or winter within a 1/4 mile of susceptible sites must be removed before March 15. Residual slash must not be placed in piles or rows and must be spread over the site for quick drying. The Department of Natural Resources will exercise this specification if the risk of damage warrants.

##### 5.2.22 - Operating Caution

###### 5.2.22.1 - Operating caution (6/11)

It is recommended, but not required, that within Payment Unit(s) 1 - 6, cutting, skidding, and hauling occur during late fall or frozen winter conditions. The reason for the recommendation is because the sandy roads leading to the sale area.

##### 5.2.32 - Decking/landing restoration (9/13)

All decking and landing areas must have the surface area restored to a condition equal to or better than before. This is to ensure the proper regeneration of the stand. Wood debris, chips and "cookies" from trimmings must be removed or scattered away from landing and loading areas and may not be windrowed on the edge.

##### 5.2.38 - No decking against live trees (2/04)

Cut products may not be decked against unmarked or designated leave trees.



#### 5.2.41 - Snowmobile trail protection (9/11)

The snowmobile trail is shown on the Timber Sale Map. Do not cut or damage posts with orange trail markers or traffic control signs. Where the trail is used for hauling, it must be graded to the satisfaction of the Unit Manager or his/her representative prior to December 1st. If the trail road is to be used for hauling during the snowmobile season, then a snow covered base must be left on the trail.

### 5.4 - Soil Protection

#### 5.4.1 - Rutting restriction, general (7/16)

Operations are to cease immediately if equipment and weather conditions result in rutting of roads and/or skid trails which is 12 inches or greater in depth and 50 feet in length. The Unit Manager or his/her representative may restrict hauling and/or skidding if ruts exceed the specified depth. With the Unit Manager or his/her representative's approval, the Purchaser may return to the area when the risk of rutting has decreased.

#### 5.4.2 - Skid trails (2/04)

Skid trails up and down slopes should be avoided. If however this is unavoidable, these trails will be left in a non-erodible condition using water bars, logs, and slash. Placing of slash on these skid trails while logging is ongoing may alleviate need for any further action. At the direction of the sale administrator, seed, fertilizer, and mulch may also be required.

#### 5.4.5 - Soil caution (11/04)

Care must be taken to minimize soil damage due to the sandy soils.

### 5.8 - Protection of Endangered Species

#### 5.8.5 - Protection of raptor nests (3/13)

All trees with raptor nests will be protected if found during harvesting operations. Notification will be made to the Unit Manager or his/her representative who will notify the Wildlife Biologist so an on-site evaluation and recommendation can be made, if necessary.

## 6 - Safety and Fire Prevention

### 6.2 - Signing

#### 6.2.2 - Snowmobile trail posting (8/09)

The Purchaser is responsible for posting and maintaining caution signs on the snowmobile trail prior to beginning operations during the snowmobile season (approximately December 1 to March 31). The trail must be posted at appropriate distances from the sale area to warn of logging activity and truck traffic. Signs must be removed when harvest operations are suspended or completed. The Purchaser will provide these signs.



# TIMBER SALE MAP

This information provided by authority of Part 525, 1994 PA 451, as amended.

Forest Management Unit Newberry		County Chippewa	Mapped By Payment	Date 10/2/17	Page 1	of 1
Township 50N	Range 7W	Section(s) and Subdivision(s) Sec 3: NESE, NWSE, SESE, SWSE, NESW, NWSW		Scale 1:15,840		

### Cover Type

A = Aspen	H = Hemlock	N = Marsh	U = Upland Brush
B = Paper Birch	J = Jack Pine	O = Oak	UM = Upland Mixed
C = Cedar	L = Lowland Brush	P = Lowland Poplar	V = Bog or Marsh
D = Treed Bog	LM = Lowland Mixed	Q = Mixed Swamp Conifer	W = White Pine
E = Swamp Hdwoods	M = Mpl, Bch, Brch	R = Red Pine	X = Non Stocked
F = Spruce Fir	MC = Mixed Conifer	S = Black Spruce	Z = Water
G = Grass	MD = Mixed Deciduous	T = Tamarack	

### Density

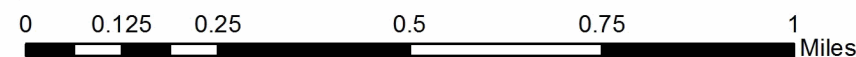
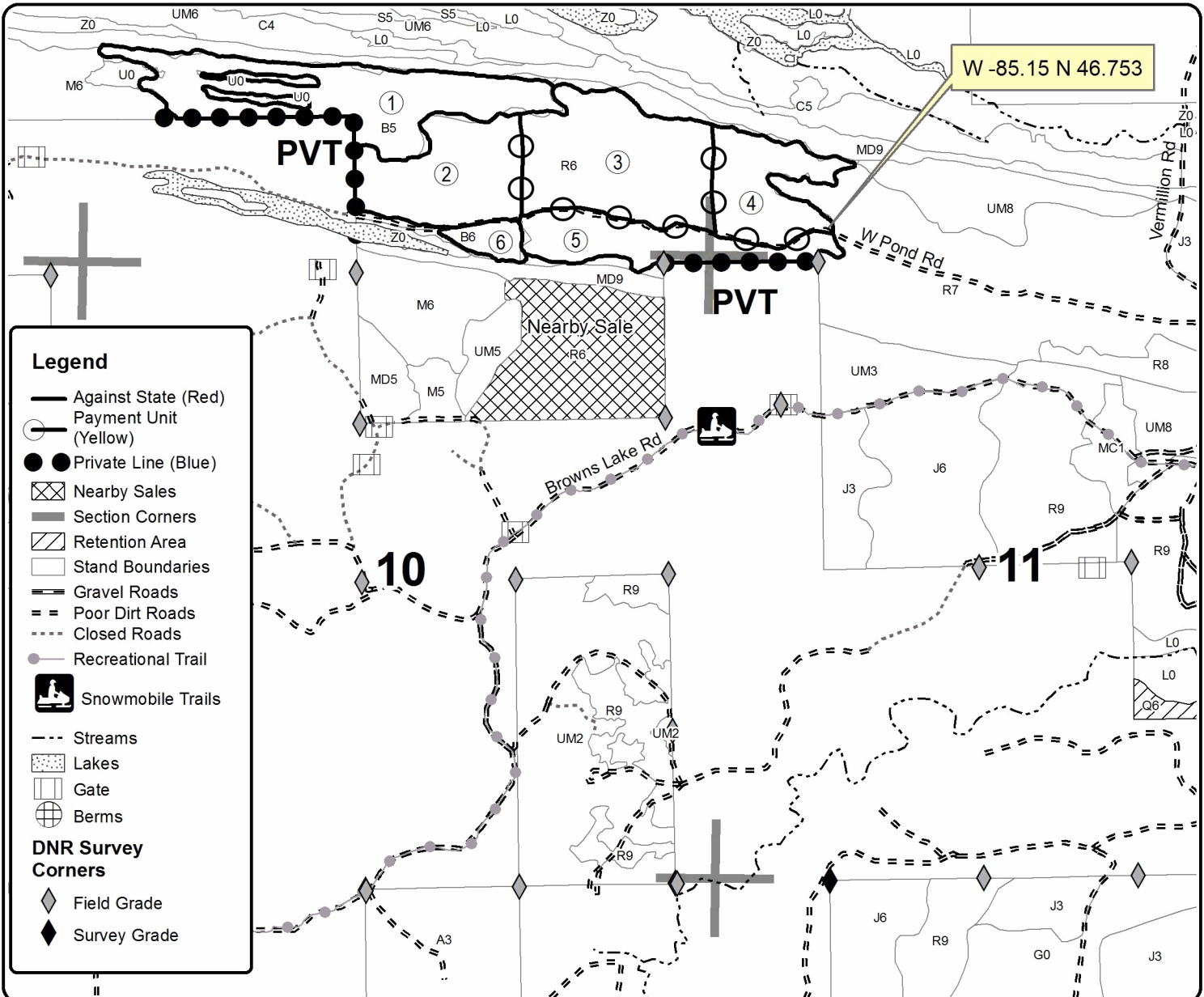
0 = Non Stocked	5 = Pole Timber Medium
1 = Seedling Sapling Poor	6 = Pole Timber Well
2 = Seedling Sapling Medium	7 = Saw Timber Poor
3 = Seedling Sapling Well	8 = Saw Timber Medium
4 = Pole Timber Poor	9 = Saw Timber Well

PU	Acres	PU	Acres
1	36.2	4	17.8
2	24.6	5	18.2
3	35.7	6	3.9

## West Vermillion Pine / Birch

### Compartment 54

136.4 Acres



TIMBER SALE INFORMATION

Leisurely Stroll Spruce (42-016-17)

Luce County (Advertised Price \$103,182.10)

SALE NOTE: The Michigan Department of Transportation (MDOT) must be contacted prior to harvesting timber within the MDOT right-of-way. See Sale Spec 4.3.1.

Harvesting is limited to the period of December 15 to March 15 due to low ground nature of the sale area and access route into the sale. See Sale Spec 5.2.3.1.

A timber sale contract for this lump sum, sealed bid timber sale will be awarded to the responsible bidder offering the highest sealed bid price. Bids must be at or above the following advertised price for each species:

<u>PRODUCTS &amp; SPECIES</u>	<u>ESTIMATED UNITS*</u>	<u>ADVERTISED PRICE</u>
Pulpwood		
Balsam Fir	164.00 Cords	\$ 12.45 / Cord
Black Spruce	2,914.00 Cords	\$ 22.10 / Cord
Paper Birch	837.00 Cords	\$ 20.40 / Cord
Quaking Aspen	28.00 Cords	\$ 34.05 / Cord
Red Maple	347.00 Cords	\$ 18.10 / Cord
Tamarack	840.00 Cords	\$ 14.80 / Cord

\* The total volume is statistically estimated within plus (+) or minus (-) 10.70 percent. The estimated units are final and not subject to adjustment. Prospective bidders are urged to examine this timber and to make their own estimates of quantity and quality.

**BOND AND PAYMENT SCHEDULE:**

1. A bond in the amount of \$5,159.00 to insure faithful performance of the conditions of the contract will be deposited by the successful bidder within 21 days of the sale award.
2. Cutting in any sale or unit without the required advance payment would be considered a trespass.
3. Total payment must be paid in advance or according to the following schedule:
  - (a) Ten percent (10%) of the sale value must be paid within 21 days of the sale award.
  - (b) The 10% down payment will be credited towards the first unit cut.
  - (c) Payment for each of the following units must be made before cutting begins in that unit:

<u>PAYMENT UNIT NUMBER</u>	<u>PERCENT OF TOTAL SALE VALUE</u>
01	9.3%
02	13.5%
03	3.2%
04	10.0%
05	12.2%
06	19.4%
07	6.3%
08	4.2%
09	10.8%
10	8.9%
11	2.2%

4. If no cutting takes place, the 10% down payment will not be refunded.
5. Operations on the contract issued will terminate on 06/30/2022.

**Description of Timber by Payment Unit (PU)**

PU	MARKET GROUP	PRODUCT	QUANTITY	UNIT	ACRES	ADVERTISE PRICE		
	Black Spruce	Pulpwood	415.0	Cords	18.5	\$9,618.55		
	Black Spruce		506.0	Cords	50.4			
	Tamarack		19.0	Cords	17.8			
	Black Spruce		363.0	Cords	35.7			
	Black Spruce		520.0	Cords	18.0			
	Black Spruce		662.0	Cords	52.6			
	Black Spruce		241.0	Cords	14.2			
	Balsam Fir		9.0	Cords	13.5			
	Tamarack		5.0	Cords	36.5			
	Balsam Fir		1.0	Cords	35.2			
	Tamarack		26.0	Cords	18.5			
	Tamarack		159.0	Cords	50.4			
	Tamarack		152.0	Cords	35.7			
	Tamarack		74.0	Cords	18.0			
	Tamarack		332.0	Cords	52.6			
	Tamarack		73.0	Cords	14.2			
	Black Spruce		69.0	Cords	13.5			
	Balsam Fir		34.0	Cords	36.5			
	Black Spruce		5.0	Cords	35.2			
	Balsam Fir		24.0	Cords	50.4			
	Balsam Fir		10.0	Cords	14.2			
	Paper Birch		370.0	Cords	13.5			
	Black Spruce		12.0	Cords	36.5			
	Paper Birch		25.0	Cords	35.2			
	Black Spruce		119.0	Cords	50.4			
	Black Spruce		2.0	Cords	14.2			
	Quaking Aspen		5.0	Cords	13.5			
	Paper Birch		362.0	Cords	36.5			
	Paper Birch		80.0	Cords	14.2			
	Quaking Aspen		23.0	Cords	36.5			
	Balsam Fir		Pulpwood	5.0	Cords		18.5	
2	Balsam Fir		Pulpwood	31.0	Cords		50.4	\$13,921.75
3	Red Maple		Pulpwood	3.0	Cords		17.8	\$3,264.20
4	Balsam Fir	Pulpwood	6.0	Cords	35.7	\$10,346.60		
5	Balsam Fir	Pulpwood	4.0	Cords	18.0	\$12,637.00		
6	Balsam Fir	Pulpwood	30.0	Cords	52.6	\$19,917.30		
7	Balsam Fir	Pulpwood	10.0	Cords	14.2	\$6,531.00		
8	Red Maple	Pulpwood	138.0	Cords	13.5	\$4,298.50		
9	Red Maple	Pulpwood	95.0	Cords	36.5	\$11,148.70		
10	Red Maple	Pulpwood	20.0	Cords	35.2	\$9,218.45		
11	Red Maple	Pulpwood	91.0	Cords	6.7	\$2,280.05		
TOTAL:			5,130.0	Cords				

## Sale Specific Conditions & Requirements

**Sale Name: Leisurely Stroll Spruce**

**Sale Number: 42-016-17 Seq#: 1**

### 1 - Sale Area

#### 1.2 - Boundaries

##### 1.2.1 - Painted boundaries (1/14)

The sale boundary and Payment Unit boundaries are marked and identified by red, blue and yellow paint. Exterior sale boundary lines against private are marked with blue paint. Exterior sale boundary lines against state are marked with red paint. Interior Payment Unit boundaries are marked with yellow paint. Yellow painted trees designating an interior Payment Unit boundary are only to be cut when all surrounding Payment Units have been paid. The painted boundary line trees are not Included Timber and are to be protected.

### 2 - Timber Specifications

#### 2.1 - Included Timber

##### 2.1.2 - Clearcut unit(s) w/o unmerchantable trees (8/11)

Within Payment Unit(s) 1 - 11, cut all trees which meet minimum piece specifications in 2.2 Utilization, except do not cut cedar or hemlock. In addition, within Payment Unit 4, do not cut any white pine.

### 4 - Transportation

#### 4.1 - Construction

##### 4.1.6 - Road construction (1/09)

Construction of new roads or improvements of existing roads shall be done in such a way as to minimize the environmental and visual impacts. Merchantable trees shall be cut and utilized unless otherwise directed. Non-merchantable trees shall be severed and laid flat on the ground. Slash shall be scattered, and not left in windrows and kept a minimum of 10 feet back from the road edge. Stumps shall be set upright, not left on edge, and be moved at least 10 feet away from the road edge. Disturbed soil shall be feathered into the woods and not left in berms or windrows.

##### 4.1.7 - Road closure (10/11)

All new roads built into the sale must be blocked to vehicle traffic upon completion of the sale. Overgrown and/or abandoned roads that are reopened shall be considered new roads. In general, this will require constructing a four (4') foot high berm of stumps and logs covered with earth at the beginning of any new road course. Stumps and brush must be placed along the road for a minimum of 200 feet, effectively obliterating it. These roads must be rendered impassable to cars, trucks and ORV's. Stumps from road building and landing construction can be reserved to meet the above road closure specifications. Temporary berms may be required if no sale activity occurs for 30 or more consecutive days. Contact the sale administrator for specific details of design and placement.

##### 4.1.11 - Permits (2/12)

The DNR (Newberry Field Office) will secure any necessary highway and stream crossing permits that may be required. The purchaser will have to give the DNR the necessary advance notice of plans to begin harvesting operations in order to secure the driveway permit from MDOT.

#### 4.2 - Maintenance

##### 4.2.1 - Hauling restriction (12/08)

Hauling may be restricted on forest roads by the Unit Manager or his/her representative. The restriction may occur during any period during which the condition of the road(s) is deemed unacceptable by the sale administrator. Examples of these conditions would be wet weather, warm temperatures, etc.

##### 4.2.4 - Grading (10/16)

If damage occurs on existing forest roads (either on state or private land), for completion of the sale, these roads must be graded. In general, this will require a road grader or bull dozer to shape up the roads after forest products have been hauled off site. Roads must be graded and leveled back to pre-harvest conditions. This includes cleaning of drainage areas, grading and leveling as necessary. Wet weather conditions may extend the time needed for roads to dry out and be returned to a condition prior to harvesting operations. Contact sale administrator for directions. Damages will be assessed if grading/repair

does not occur. The grading equipment to be used must be approved by the Unit Manager or his/her representative.

#### 4.3 - Public Right-of-Way

##### 4.3.1 - MDOT R-O-W (11/14)

The Michigan Department of Transportation (MDOT) must be contacted prior to harvesting timber within the MDOT right-of-way.

#### 4.4 - Access

##### 4.4.1 - Private property access (3/11)

Permission for access across private land is the responsibility of the Purchaser. Should the Purchaser desire to cross private land, a copy of the written permission from the private land-owner may be required by the DNR.

### 5 - Operations

#### 5.1 - Notification

##### 5.1.4 - Post-sale conference (10/16)

A post-sale conference on site between the Purchaser and sale administrator is required 5 days prior to the completion of active logging operations to determine clean-up and repair of landings, road edges, and the fulfillment of other contract specifications. This is recommended prior to removing equipment from the sale area to expedite the closure process.

#### 5.2 - Conduct of Operations

##### 5.2.1 - Slash

###### 5.2.1.8 - Slash height (12/08)

No slash or tree tops may exceed 36 inches in height.

##### 5.2.2 - Hazard Trees/Snags

###### 5.2.2.1 - Den trees (10/16)

Obvious hollow and/or den trees shall be protected and left standing unless they are a safety hazard.

##### 5.2.3 - Operating Restrictions

###### 5.2.3.1 - Operating restrictions (9/11)

Within Payment Unit(s) 1 - 11, unless changed by written agreement, cutting, skidding and hauling are limited to the period of December 15 - March 15. This restriction is due to the low ground nature of the sale area and access route into the sale.

###### 5.2.32 - Decking/landing restoration (9/13)

All decking and landing areas must have the surface area restored to a condition equal to or better than before. This is to ensure the proper regeneration of the stand. Wood debris, chips and "cookies" from trimmings must be removed or scattered away from landing and loading areas and may not be windrowed on the edge.

###### 5.2.38 - No decking against live trees (2/04)

Cut products may not be decked against unmarked or designated leave trees.

#### 5.4 - Soil Protection

##### 5.4.1 - Rutting restriction, general (7/16)

Operations are to cease immediately if equipment and weather conditions result in rutting of roads and/or skid trails which is 12 inches or greater in depth and 50 feet in length. The Unit Manager or his/her representative may restrict hauling and/or skidding if ruts exceed the specified depth. With the Unit Manager or his/her representative's approval, the Purchaser may return to the area when the risk of rutting has decreased.

#### 5.8 - Protection of Endangered Species

##### 5.8.5 - Protection of raptor nests (3/13)

All trees with raptor nests will be protected if found during harvesting operations. Notification will be made to the Unit Manager or his/her representative who will notify the Wildlife Biologist so an on-site evaluation and recommendation can be

made, if necessary.

## **7 - Other Conditions**

### 7.5 - Loss

#### 7.5.1 - Deteriorating timber (7/09)

The sale area has received damage from spruce budworm. The Purchaser should harvest the wood as soon as possible. The Department of Natural Resources is held free of responsibility of any further damage or deterioration due to delay in harvesting.



# TIMBER SALE MAP

This information provided by authority of Part 525, 1994 PA 451, as amended.

Sale Number	Year
42-016	17

Forest Management Unit Newberry	County Luce	Mapped By Payment	Date 10/2/17	Page 1	of 1
Township 45N	Range 9W	Section(s) and Subdivision(s) SWSW, NESW, NE 1/4. Sec 2: SE 1/4. Sec 1: SW 1/4, SWNW, SENW.	Cruised By Vanoss Forestry Services	Scale 1:15,840	

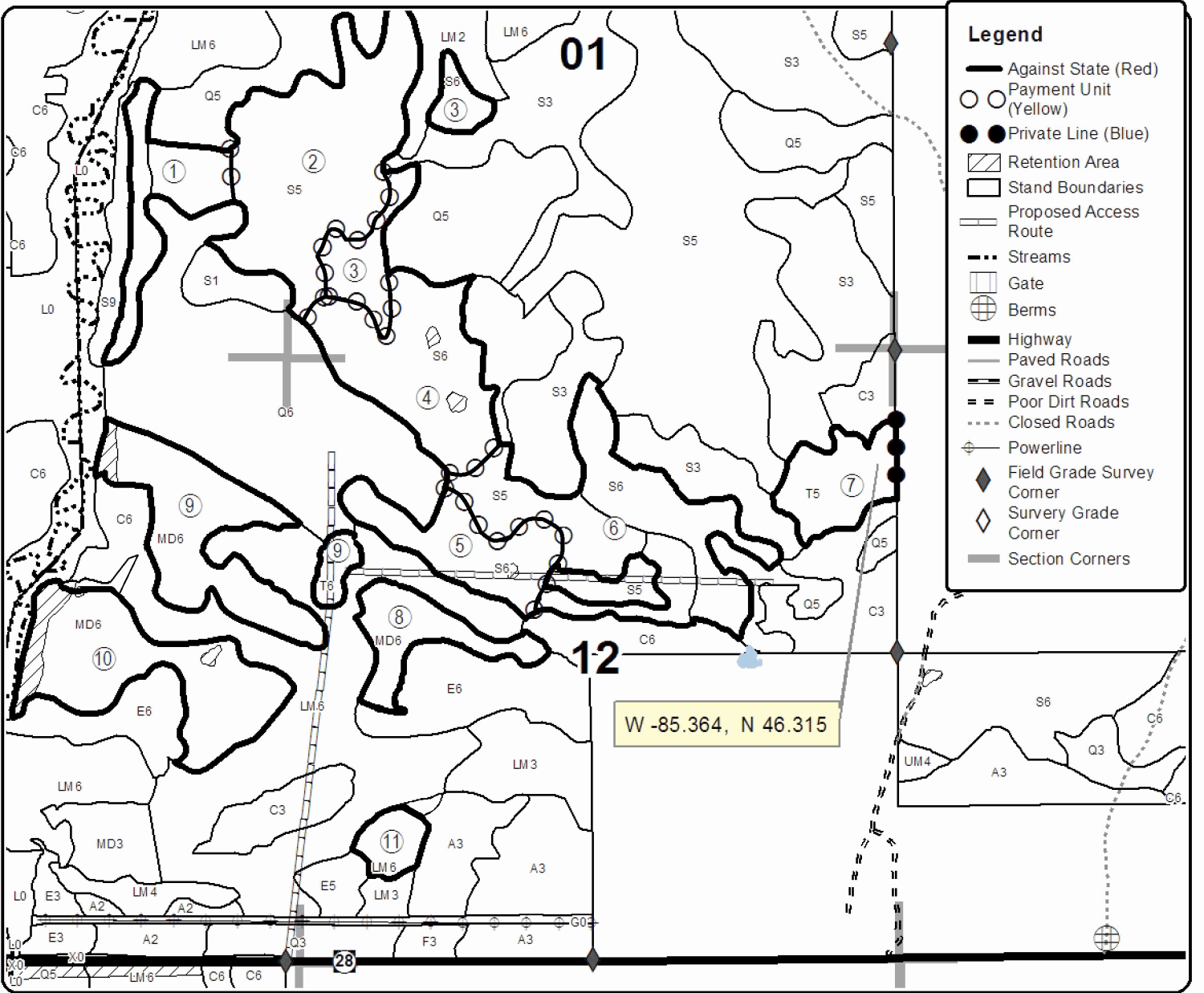
Cover Type				Density			
A = Aspen	H = Hemlock	N = Marsh	U = Upland Brush	0 = Non Stocked	5 = Pole Timber Medium		
B = Paper Birch	J = Jack Pine	O = Oak	UM = Upland Mixed	1 = Seedling Sapling Poor	6 = Pole Timber Well		
C = Cedar	L = Lowland Brush	P = Lowland Poplar	V = Bog or Marsh	2 = Seedling Sapling Medium	7 = Saw Timber Poor		
D = Treed Bog	LM = Lowland Mixed	Q = Mixed Swamp Conifer	W = White Pine	3 = Seedling Sapling Well	8 = Saw Timber Medium		
E = Swamp Hdwoods	M = Mpl. Bch, Brch	R = Red Pine	X = Non Stocked	4 = Pole Timber Poor	9 = Saw Timber Well		
F = Spruce Fir	MC = Mixed Conifer	S = Black Spruce	Z = Water				
G = Grass	MD = Mixed Deciduous	T = Tamarack					

PU	Acres	PU	Acres	PU	Acres
1	18.5	5	18.0	9	36.5
2	50.4	6	52.6	10	35.2
3	17.8	7	14.2	11	6.7
4	35.7	8	13.5		

## Leisurely Stroll Spruce

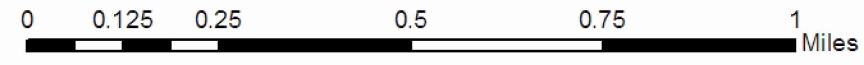
### Compartment 121

### 299.1 Acres



### Legend

- Against State (Red)
- Payment Unit (Yellow)
- Private Line (Blue)
- ▨ Retention Area
- ▭ Stand Boundaries
- Proposed Access Route
- Streams
- Gate
- ⊕ Berms
- Highway
- Paved Roads
- Gravel Roads
- Poor Dirt Roads
- Closed Roads
- ⊕ Powerline
- ◆ Field Grade Survey Corner
- ◇ Survey Grade Corner
- Section Corners





West Vermillion Pine/Birch (42-015-17)  
; Chippewa COUNTY

In response to the notice of sale to be held 3:00 p.m. (local time) on May 17, 2018, I am hereby submitting my sealed bid (firm offer) for the following forest products to be cut. Bids for individual species must be at or above the advertised price. All non-responsive bid forms may be rejected.

<u>PRODUCTS &amp; SPECIES</u>	<u>ESTIMATED VOLUME*</u>	<u>ADVERTISED PRICE</u>	<u>BID PRICE/UNIT</u>
Pulpwood			
Balsam Fir	122.00 Cords	\$ 10.90/Cord	\$ _____
Jack Pine	131.00 Cords	\$ 39.10/Cord	\$ _____
Paper Birch	123.00 Cords	\$ 17.85/Cord	\$ _____
Red Maple	78.00 Cords	\$ 15.85/Cord	\$ _____
Red Pine	745.00 Cords	\$ 62.45/Cord	\$ _____
White Pine	397.00 Cords	\$ 23.35/Cord	\$ _____
White Spruce	29.00 Cords	\$ 19.35/Cord	\$ _____

\*The volumes are statistically estimated within plus (+) or minus (-) 14.27 percent. These estimated volumes are final and not subject to adjustment. Prospective bidders are urged to examine this timber and to make their own estimates of quantity and quality.

I understand that any or all bids may be rejected. All bids must be signed and all bid items must be bid or the bid form may be rejected. I also understand that consideration and awarding a contract will be based upon my past performance and ability to complete the contract based upon equipment and staffing subject to my control.

FEDERAL ID: \_\_\_\_ - \_\_\_\_ - \_\_\_\_ or SOCIAL SECURITY NUMBER: \_\_\_\_ - \_\_\_\_ - \_\_\_\_

Company or individual bidding: \_\_\_\_\_

Company representative's name: \_\_\_\_\_

Address: \_\_\_\_\_

City: \_\_\_\_\_ State: \_\_\_\_\_ Zip: \_\_\_\_\_

IF AVAILABLE, PLEASE PLACE THE PERSONALIZED LABEL FROM YOUR PROSPECTUS IN THE ABOVE BOX.

Individual or company representative's signature: \_\_\_\_\_ Date: \_\_\_\_\_

Phone number : \_\_\_\_\_ Email (optional): \_\_\_\_\_

**THE WINNING BIDDER MUST COMPLETE THE VERIFICATION OF WORKER'S DISABILITY COMPENSATION ACT COMPLIANCE (ON REVERSE SIDE IF DOUBLE SIDED) WITHIN 21 DAYS OF SALE AWARD DATE**



<b>FOR DEPARTMENT USE ONLY</b>
Sale Number (XX - XXX - XX - XX)
Forest Management Unit:

## TIMBER SALE VERIFICATION OF WORKER'S DISABILITY COMPENSATION ACT COMPLIANCE

*As required by Act 317, P.A. 1969 (Worker's Compensation) and  
Part 5 of Act 451 of 1994, as amended.*

### VERIFICATION OF WORKER'S DISABILITY COMPENSATION ACT COMPLIANCE

- This verification must be completed and submitted within 21 days of contract award and prior to the issuance of the timber sale contract.
- In addition, if boxes 2B or 2C are checked, then Notice of Exclusion or Certificate of Insurance must be submitted within twenty-one (21) days of the contract award and prior to the issuance of the timber sale contract.
- All information must be typed or printed except for written signatures.

Please Check Appropriate Categories:

1. My business is organized as (you **must** check one of the boxes below):
  - A.  Sole Proprietorship (individual)
  - B.  Partnership
  - C.  Corporation
2. You **must** check one of the boxes below:
  - A.  I certify my business is a sole proprietorship and it has no employees but the sole proprietor. I am not subject to the Worker's Compensation Laws.
  - B.  I certify my business has satisfied its obligation to the Worker's Compensation Act through the use of an approved Notice of Exclusion (BWC-337, Rev. 5/96). I will provide a copy of the Notice of Exclusion within 21 days of the contract award. (For questions or a copy of the BWC-337, please call the Worker's Compensation Bureau at 517-322-1195).
  - C.  I certify my business has a Worker's Compensation Policy. I will provide an original Certificate of Insurance within twenty-one (21) days of the contract award.
3. If you have checked item 2(A) or 2(B), you **must** indicate the number of **both** full-time and part-time employees, other than yourself, including family members and active partners (if none, you must enter "0").

\_\_\_\_\_ Full-time Employees

\_\_\_\_\_ Part-time Employees

Name of Business		Federal ID (or) Social Security No.	
Address		Telephone (       )	
City	State	ZIP	

*I hereby certify that the above information is true and correct. I agree to notify the Michigan DNR of any changes that occur in factors affecting my coverage during any of my present and future operations.*

\_\_\_\_\_  
Signature of Owner or Authorized Representative

\_\_\_\_\_  
Title

\_\_\_\_\_  
Date

**Please complete the "SEALED BID" information on the next page**

Leisurely Stroll Spruce (42-016-17)  
; Luce COUNTY

In response to the notice of sale to be held 3:00 p.m. (local time) on May 17, 2018, I am hereby submitting my sealed bid (firm offer) for the following forest products to be cut. Bids for individual species must be at or above the advertised price. All non-responsive bid forms may be rejected.

<u>PRODUCTS &amp; SPECIES</u>	<u>ESTIMATED VOLUME*</u>	<u>ADVERTISED PRICE</u>	<u>BID PRICE/UNIT</u>
Pulpwood			
Balsam Fir	164.00 Cords	\$ 12.45/Cord	\$ _____
Black Spruce	2,914.00 Cords	\$ 22.10/Cord	\$ _____
Paper Birch	837.00 Cords	\$ 20.40/Cord	\$ _____
Quaking Aspen	28.00 Cords	\$ 34.05/Cord	\$ _____
Red Maple	347.00 Cords	\$ 18.10/Cord	\$ _____
Tamarack	840.00 Cords	\$ 14.80/Cord	\$ _____

\*The volumes are statistically estimated within plus (+) or minus (-) 10.70 percent. These estimated volumes are final and not subject to adjustment. Prospective bidders are urged to examine this timber and to make their own estimates of quantity and quality.

I understand that any or all bids may be rejected. All bids must be signed and all bid items must be bid or the bid form may be rejected. I also understand that consideration and awarding a contract will be based upon my past performance and ability to complete the contract based upon equipment and staffing subject to my control.

FEDERAL ID: \_\_\_\_ - \_\_\_\_ - \_\_\_\_ or SOCIAL SECURITY NUMBER: \_\_\_\_ - \_\_\_\_ - \_\_\_\_

Company or individual bidding: \_\_\_\_\_

Company representative's name: \_\_\_\_\_

Address: \_\_\_\_\_

City: \_\_\_\_\_ State: \_\_\_\_\_ Zip: \_\_\_\_\_

IF AVAILABLE, PLEASE PLACE THE PERSONALIZED LABEL FROM YOUR PROSPECTUS IN THE ABOVE BOX.

Individual or company representative's signature: \_\_\_\_\_ Date: \_\_\_\_\_

Phone number : \_\_\_\_\_ Email (optional): \_\_\_\_\_

**THE WINNING BIDDER MUST COMPLETE THE VERIFICATION OF WORKER'S DISABILITY COMPENSATION ACT COMPLIANCE (ON REVERSE SIDE IF DOUBLE SIDED) WITHIN 21 DAYS OF SALE AWARD DATE**



FOR DEPARTMENT USE ONLY	
Sale Number (XX - XXX - XX - XX)	
Forest Management Unit:	

# TIMBER SALE VERIFICATION OF WORKER'S DISABILITY COMPENSATION ACT COMPLIANCE

As required by Act 317, P.A. 1969 (Worker's Compensation) and  
Part 5 of Act 451 of 1994, as amended.

## VERIFICATION OF WORKER'S DISABILITY COMPENSATION ACT COMPLIANCE

- This verification must be completed and submitted within 21 days of contract award and prior to the issuance of the timber sale contract.
- In addition, if boxes 2B or 2C are checked, then Notice of Exclusion or Certificate of Insurance must be submitted within twenty-one (21) days of the contract award and prior to the issuance of the timber sale contract.
- All information must be typed or printed except for written signatures.

Please Check Appropriate Categories:

1. My business is organized as (you **must** check one of the boxes below):
  - A.  Sole Proprietorship (individual)
  - B.  Partnership
  - C.  Corporation
2. You **must** check one of the boxes below:
  - A.  I certify my business is a sole proprietorship and it has no employees but the sole proprietor. I am not subject to the Worker's Compensation Laws.
  - B.  I certify my business has satisfied its obligation to the Worker's Compensation Act through the use of an approved Notice of Exclusion (BWC-337, Rev. 5/96). I will provide a copy of the Notice of Exclusion within 21 days of the contract award. (For questions or a copy of the BWC-337, please call the Worker's Compensation Bureau at 517-322-1195).
  - C.  I certify my business has a Worker's Compensation Policy. I will provide an original Certificate of Insurance within twenty-one (21) days of the contract award.
3. If you have checked item 2(A) or 2(B), you **must** indicate the number of **both** full-time and part-time employees, other than yourself, including family members and active partners (if none, you must enter "0").

\_\_\_\_\_ Full-time Employees

\_\_\_\_\_ Part-time Employees

Name of Business		Federal ID (or) Social Security No.	
Address		Telephone (       )	
City	State	ZIP	

*I hereby certify that the above information is true and correct. I agree to notify the Michigan DNR of any changes that occur in factors affecting my coverage during any of my present and future operations.*

\_\_\_\_\_  
Signature of Owner or Authorized Representative

\_\_\_\_\_  
Title

\_\_\_\_\_  
Date

Please complete the "SEALED BID" information on the next page