



**DEPARTMENT OF NATURAL RESOURCES  
STATE OF MICHIGAN**

**TIMBER SALE PROSPECTUS #5989**

SCHEDULED SALE DATE AND TIME: 4:00 p.m. (local time) on October 16, 2017.

LOCATION: KALKASKA FIELD OFFICE, 2089 N BIRCH ST, KALKASKA, MI 49646.

PROSPECTUS NOTE: All winning bidders will be required to obtain a Kalkaska County Road Commission permit before scheduling an on sight pre-sale meeting.

The bidder is advised to inspect the sale area and review the location, estimated volumes, operating costs and contract terms of proposed sales. Please be aware that some landowners may request 60 days or more notice for access across their land.

Notice is hereby given that bids will be received by the Unit Manager, TRAVERSE CITY MANAGEMENT UNIT, for certain timber on the following described lands:

3 Honks Hardwood (61-142-17)

Kalkaska County, Advertised Price \$108,478.45, 195.2 Acres, Aspen, Hardwood.

SALE NOTE: Bark Slippage Restrictions apply from April 15th to July 15th on all Payment Units of this sale.

Found Wallet Mix (61-145-17)

Kalkaska County, Advertised Price \$90,721.90, 146.4 Acres, Aspen, Hardwood.

Power Line Pine (61-148-17)

Kalkaska County, Advertised Price \$123,736.80, 231.5 Acres, Hardwood, Red Pine.

SALE NOTE: A recreation site such as a trail, pathway, or campground is within the sale area or the vicinity. Certain restrictions/specifications may be applicable including time restrictions.

## BID INSTRUCTIONS (VER. 09/02/2016):

### 1. Scheduled Bid Location, Date, and Time (2/11)

Bids must be received by the Unit Manager, KALKASKA OFFICE, 2089 N BIRCH ST, KALKASKA, MI 49646, no later than 4:00 p.m. (local time) on October 16, 2017. For further information concerning this sale, contact David Lemmien at 231-922-5280 extension 6840.

### 2. Bidder's Qualifications (5/16)

Purchaser shall obtain workers compensation insurance to cover claims under Michigan's Worker's Disability Compensation Act of 1969 or similar employee benefit act of any other state applicable to an employee. If all or part of a timber sale was prepared by a private contractor, the contractor and that contractor's company are not permitted to bid on the timber sale contract. Bids will not be accepted from individuals or companies appearing on the DNR/FRD No-Bid List. This list contains the names of purchasers who previously failed to execute a contract within 21-days or who have a history of poor performance.

### 3. Preparation of Sealed Bids (5/16)

Bid Forms may be completed online thru Michigan DNR Timber Sale Online Bidding (OLB) at [www.michigan.gov/timberbidding](http://www.michigan.gov/timberbidding) or by completing the hardcopy Bid Form found in the Timber Sale Prospectus. Hardcopy Bid Forms shall be manually signed in ink. Registration in OLB is considered your 'signature' for all bids submitted thru that system. Bid prices must be entered for each species and product in the Bid Price column for all material subject to bidding and all fill-in blanks must be completed. If erasures or other changes appear on the hardcopy Bid Form, each erasure or change must be initialed by the person signing the bid.

### 4. Submission of Sealed Bids (5/16)

Bid forms may be obtained from the Unit Manager or thru OLB. Bids may be submitted hardcopy or thru OLB. All hardcopy bids must be submitted on the bid form and in an envelope clearly identified as described in this section. NOTE: Only one bid form per bid envelope. Sealed bids must be submitted to the Unit office designated in the prospectus and must be submitted at or prior to the time established in the prospectus. The envelope should show on the outside (a) the sale name or number and (b) the date and time of bid opening, as shown in the prospectus. Bids received after the time specified in the sale prospectus are late bids and will be rejected.

It is possible for a bidder to submit multiple bids on a single sale. For example, a bid may be submitted hardcopy and a bid may be submitted thru OLB. Or, two bidders from the same company could both submit bids on the same sale. If this were to happen, the State would accept all bids received and award the contract accordingly. All bidding and contractual requirements would apply to all bids received.

### 5. Public Opening of Sealed Bids (7/16)

If conditions permit, the sealed bids will be publicly opened and posted at the time and place set in the prospectus.

If a bidder, present at a bid opening, has submitted bids on more than one sale, that bidder may withdraw their unopened bid envelopes or announce the withdrawal of their online bid after being declared the successful bidder on one sale.

### 6. Award of Contract (1/11)

Award of the contract will be made to the Bidder whose bid, conforming to the prospectus, is most advantageous to the State of Michigan on the basis of total value at rates bid for the estimated quantities. The State reserves the right to reject any bid or waive any minor irregularity in bids received. A written award mailed (or otherwise furnished) to the successful Bidder shall be deemed to result in a binding contract without further action by either party.

### 7. Down Payment (1/11)

The Bidder to whom award is made must make a down payment within 21 days of the sale award. The amount of the down payment will be calculated as shown in the Bond and Payment Schedule of this prospectus. Only cash may be used to meet this requirement.

### 8. Performance Security (1/11)

As guarantee of faithful performance, a cash bond, certificate of deposit, surety bond or irrevocable letter of credit (LOC) is required within 21 days of the sale award. The amount of the performance security is shown in the Bond and

Payment Schedule of this prospectus. If an LOC or surety is used, the coverage must extend for at least 6 months beyond the contract expiration.

#### 9. Timber Sale Contract (9/14)

Additional conditions and requirements common to all timber sales are listed on the timber sale contract (R4031) and are available on line at [www.michigan.gov/timber](http://www.michigan.gov/timber). Contact the Unit Manager for additional information or a sample contract. Within 21 days of the date of the award letter, the bidder must sign the contract and provide the required down payment, performance security, and verification of worker's disability compensation. The down payment and performance security shall be in accordance with the provisions of the timber sale contract, in the sums stated in this prospectus. If these actions are not taken, then the Bidder, the Bidder's corporation, and the corporation's principals may not be permitted to bid on State timber sales for a period of 1 year. In addition, the Bidder certifies that if awarded this contract, the Bidder will complete the timber sale contract in accordance with its terms and any modifications thereof including requirements to purchase, cut, and remove the included timber by the expiration date.

#### 10. Disclaimer of Estimates and Bidder's Warranty of Inspection (7/16)

Before submitting this bid, the Bidder is advised and cautioned to inspect the sale area, review the requirements of the sale contract, and take other steps as may be reasonably necessary to ascertain the location, estimated volumes, construction estimates, and operating costs of the proposed sale. Failure to do so will not relieve the Bidder from responsibility for completing the contract.

The Bidder warrants that this bid is submitted solely on the basis of the Bidder's examination and inspection of the quality and quantity of the timber offered for sale and the Bidder's opinion of the value thereof and the costs of recovery. No reliance should be placed on the State of Michigan's estimates of timber quality, quantity or costs of recovery. Bidder further acknowledges that the State of Michigan: (i) expressly disclaims any warranty of fitness of timber for any purpose; (ii) offers this timber as is without any warranty of quality (merchantability) or quantity and (iii) expressly disclaims any warranty as to the quantity or quality of timber sold.

#### 11. Certification and Chain-of-Custody (10/14)

Unless otherwise indicated in the contract under section 7 – Other Conditions of the Sale Specific Conditions & Requirements, the area encompassed by this timber sale is certified to the standards of the Forest Stewardship Council (FSC) - Certificate #SCS-FM/COC-00090N and the Sustainable Forestry Initiative (SFI) - Certificate # NSF-SFIS-5Y031-SF5. Forest products from this sale may be delivered to the mill as "FSC 100% and / or SFI certified" as long as the contractor hauling the forest products is chain-of-custody (COC) certified or covered under a COC certificate from the destination mill. The purchaser is responsible for maintaining COC after leaving the sale area.

#### 12. Good Neighbor Authority (GNA) Requirements (7/16)

If the name of this timber sales contains the acronym GNA, it is authorized by the Good Neighbor Authority (GNA) and covered by various agreements between the U.S. Forest Service and the State. The timber sale occurs on federal land and the following conditions apply:

GNA contracts on US Forest Service land will not be awarded to purchasers on the Federal list of excluded parties. The System for Award Management (SAM) will be checked for active excluded parties prior to award of contract. In addition, the Bidder to whom award is made must complete an Assurance Regarding Felony Conviction or Tax Delinquent Status for Corporate Applicants (AD-3031).

#### 13. Good Neighbor Authority (GNA) Requirements, con't (9/16)

Bidder certifies, by signing this bid form, that to the best of Bidder's knowledge that the following representations are accurate and complete.

- a. That the Bidder and its principals are not presently debarred, suspended, proposed for debarment, declared ineligible, or voluntary excluded from timber sales (covered transactions) by any Federal department or agency.
- b. That the Bidder and its principals have not within a 3-year period preceding this bid been convicted of or had a civil judgment rendered against them for commission of fraud or a criminal offense in connection with obtaining, attempting to obtain, or performing a public (Federal, State, or local) transaction or contract under a public transaction; violation of Federal or State antitrust statutes or commission of embezzlement, theft, forgery, bribery, falsification or destruction of records, making false statements, or receiving stolen property.

c. That the Bidder and its principals are not presently indicted for or otherwise criminally or civilly charged by a governmental entity (Federal, State, or local) with commission of any of the offenses enumerated in paragraph b of this certification.

d. That the Bidder and its principals have not within a 3-year period preceding this bid had one or more public transactions (Federal, State, or local) terminated for breach or default of a timber or forest product contract.

Bidders that cannot certify this requirement, in whole or in part, shall submit an explanation with their bid.

KEITH CREAGH

Director

# TIMBER SALE INFORMATION

## 3 Honks Hardwood (61-142-17)

Kalkaska County (Advertised Price \$108,478.45)

SALE NOTE: Bark Slippage Restrictions apply from April 15th to July 15th on all Payment Units of this sale.

A timber sale contract for this lump sum, sealed bid timber sale will be awarded to the responsible bidder offering the highest sealed bid price. Bids must be at or above the following advertised price for each species:

<u>PRODUCTS &amp; SPECIES</u>	<u>ESTIMATED UNITS*</u>	<u>ADVERTISED PRICE</u>
Sawtimber		
B. T. Aspen	8.90 MBF	\$ 113.00 / MBF
Basswood	202.10 MBF	\$ 116.00 / MBF
Beech	31.10 MBF	\$ 98.00 / MBF
Black Cherry	10.80 MBF	\$ 210.00 / MBF
Red Maple	31.80 MBF	\$ 143.00 / MBF
Sugar Maple	88.70 MBF	\$ 300.00 / MBF
Pulpwood		
Basswood	539.00 Cords	\$ 26.30 / Cord
Beech	295.00 Cords	\$ 19.40 / Cord
Misc. Species 1	35.00 Cords	\$ 3.75 / Cord
Mixed Aspen	202.00 Cords	\$ 21.50 / Cord
Mixed Hardwood	1,195.00 Cords	\$ 19.40 / Cord

\* The total volume is statistically estimated within plus (+) or minus (-) 9.12 percent. The estimated units are final and not subject to adjustment. Prospective bidders are urged to examine this timber and to make their own estimates of quantity and quality.

### **BOND AND PAYMENT SCHEDULE:**

1. A bond in the amount of \$10,848.00 to insure faithful performance of the conditions of the contract will be deposited by the successful bidder within 21 days of the sale award.
2. Cutting in any sale or unit without the required advance payment would be considered a trespass.
3. Total payment must be paid in advance or according to the following schedule:
  - (a) Ten percent (10%) of the sale value must be paid within 21 days of the sale award.
  - (b) The 10% down payment will be credited towards the first unit cut.
4. If no cutting takes place, the 10% down payment will not be refunded.
5. Operations on the contract issued will terminate on 12/31/2019.

**Description of Timber by Payment Unit (PU)**

PU	MARKET GROUP	PRODUCT	QUANTITY	UNIT	ACRES	ADVERTISE PRICE	
1	B. T. Aspen	Sawtimber	2.5	MBF	65.2	\$36,284.95	
	Basswood		63.1	MBF			
	Beech		6.6	MBF			
	Black Cherry		1.7	MBF			
	Red Maple		17.1	MBF			
	Sugar Maple		30.9	MBF			
	Basswood		Pulpwood	196.0			Cords
	Beech			117.0			Cords
	Misc. Species 1			3.0			Cords
	<i>White Ash</i>			3.0			<i>Cords</i>
	Mixed Aspen			107.0			Cords
	<i>B. T. Aspen</i>			61.0			<i>Cords</i>
	<i>Quaking Aspen</i>			46.0			<i>Cords</i>
	Mixed Hardwood			321.0			Cords
	<i>Black Cherry</i>			12.0			<i>Cords</i>
	<i>Ironwood</i>			12.0			<i>Cords</i>
	<i>Red Maple</i>			97.0			<i>Cords</i>
	<i>Sugar Maple</i>			200.0			<i>Cords</i>
2	B. T. Aspen	Sawtimber	0.4	MBF	47.1	\$27,643.45	
	Basswood		65.6	MBF			
	Beech		6.8	MBF			
	Black Cherry		4.0	MBF			
	Red Maple		2.5	MBF			
	Sugar Maple		23.3	MBF			
	Basswood		Pulpwood	180.0			Cords
	Beech			39.0			Cords
	Misc. Species 1			17.0			Cords
	<i>Misc. Species 1</i>			1.0			<i>Cords</i>
	<i>White Ash</i>			16.0			<i>Cords</i>
	Mixed Aspen			6.0			Cords
	<i>B. T. Aspen</i>			3.0			<i>Cords</i>
	<i>Quaking Aspen</i>			3.0			<i>Cords</i>
	Mixed Hardwood			281.0			Cords
	<i>Black Cherry</i>			30.0			<i>Cords</i>
	<i>Ironwood</i>			14.0			<i>Cords</i>
	<i>Red Maple</i>			19.0			<i>Cords</i>
<i>Sugar Maple</i>	218.0	<i>Cords</i>					
3	Basswood	Sawtimber	57.4	MBF	41.8	\$24,769.95	
	Beech		6.2	MBF			
	Black Cherry		5.1	MBF			
	Red Maple		2.2	MBF			
	Sugar Maple		22.5	MBF			
	Basswood		Pulpwood	120.0			Cords
	Beech			36.0			Cords
	Misc. Species 1			15.0			Cords
	<i>Misc. Species 1</i>			2.0			<i>Cords</i>
	<i>White Ash</i>			13.0			<i>Cords</i>
	Mixed Aspen			3.0			Cords
	<i>Quaking Aspen</i>			3.0			<i>Cords</i>
	Mixed Hardwood			278.0			Cords
	<i>Black Cherry</i>			34.0			<i>Cords</i>
	<i>Ironwood</i>			9.0			<i>Cords</i>
<i>Red Maple</i>	17.0	<i>Cords</i>					
<i>Sugar Maple</i>	218.0	<i>Cords</i>					
4	B. T. Aspen	Sawtimber	6.0	MBF	41.1	\$19,780.10	
	Basswood		16.0	MBF			

**Description of Timber by Payment Unit (PU), con't**

PU	MARKET GROUP	PRODUCT	QUANTITY	UNIT	ACRES	ADVERTISE PRICE
4 con't	Beech	Sawtimber	11.5	MBF		
	Red Maple		10.0	MBF		
	Sugar Maple		12.0	MBF		
	Basswood	Pulpwood	43.0	Cords		
	Beech		103.0	Cords		
	Mixed Aspen		86.0	Cords		
	<i>B. T. Aspen</i>		86.0	<i>Cords</i>		
	Mixed Hardwood		315.0	Cords		
	<i>Ironwood</i>		12.0	<i>Cords</i>		
	<i>Red Maple</i>		74.0	<i>Cords</i>		
	<i>Sugar Maple</i>		229.0	<i>Cords</i>		
TOTAL:			373.4	MBF		
TOTAL:			2,266.0	Cords		

# Sale Specific Conditions & Requirements

**Sale Name: 3 Honks Hardwood**

**Sale Number: 61-142-17 Seq#: 1**

## 1 - Sale Area

### 1.2 - Boundaries

#### 1.2.1 - Painted boundaries (1/14)

The sale boundary and Payment Unit boundaries are marked and identified by red and yellow paint. Exterior sale boundary lines against state are marked with red paint. Interior Payment Unit boundaries are marked with yellow paint. The painted boundary line trees are not Included Timber and are to be protected, unless marked with orange paint.

## 2 - Timber Specifications

### 2.1 - Included Timber

#### 2.1.3 - Cut tree marked unit(s) (12/08)

Within Payment Unit(s) 1, 2, 3, and 4, all trees are designated for cutting when marked with orange paint above and below stump height, regardless of merchantability. In addition, cut aspen, ash, ironwood, and beech except for those marked with an orange "X".

#### 2.1.11 - Description of timber note (2/04)

Note that Misc. Species 1 contains dead ash, which is designated for cutting.

### 2.2 - Utilization

#### 2.2.3 - Stump heights (4/07)

Stump heights within Payment Unit(s) 1, 2, 3, and 4 shall not exceed 12 inches for trees greater than 10 inches DBH and 4 inches for trees smaller than 10 inches DBH.

#### 2.2.6 - Roundwood operation required (5/07)

The skidding of whole trees or tree segments with limbs attached is prohibited within Payment Unit(s) 1, 2, 3 and 4. All products must be produced as roundwood and forwarded to existing roads or landing areas in final product length.

#### 2.2.11 - Chipping restriction (9/14)

If chipping occurs on this sale, then no woody debris present on the ground at the start of the sale may be chipped. In addition, brush or chips may not be stored or stockpiled on-site for more than 30 days.

## 3 - Payments

### 3.3 - Pre-measured Sales

#### 3.3.4 - Dividing payment units (7/14)

Payment Unit(s) 1, 2, 3, and 4 may be divided at the request of the Purchaser and upon approval of the Unit Manager.

Dividing Payment Units is a contract modification which requires a Timber Sale Contract Supplement. There will be only one division per Payment Unit.

## 4 - Transportation

### 4.1 - Construction

#### 4.1.4 - Timber removed for construction (12/09)

Trees cut or damaged in the process of pre-approved road, landing or skid trail construction will be decked in an area separate from other Designated Timber and not removed until measured by the sale administrator. Payment will be made at the specified Purchase Unit Price.

#### 4.1.6 - Road construction (1/09)

Construction of new roads or improvements of existing roads shall be done in such a way as to minimize the environmental and visual impacts. Merchantable trees shall be cut and utilized unless otherwise directed. Non-merchantable trees shall be severed and laid flat on the ground. Slash shall be scattered, and not left in windrows and kept a minimum of 10 feet back from the road edge. Stumps shall be set upright, not left on edge, and be moved at least 10 feet away from the road edge.



Disturbed soil shall be feathered into the woods and not left in berms or windrows.

#### 4.1.7 - Road closure (10/11)

All new roads built into the sale must be blocked to vehicle traffic within 30 days of completion of hauling. Overgrown roads (i.e. roads shown as "Closed" on Timber Sale Map) that are reopened shall be considered new roads. In general, this will require constructing a four (4') foot high berm of stumps and logs covered with earth. Stumps and brush must be placed along the remainder of the trail. These roads must be rendered impassable to cars and trucks. All stumps from road building and landing construction must be reserved to block any newly constructed roads upon completion of the sale. These stumps must be scattered along the road system to prohibit vehicular movement. Temporary berms may be required if no sale activity occurs for 30 or more consecutive days. Contact the sale administrator for specific details of design and placement.

#### 4.1.11 - Permits (2/12)

The Purchaser will secure any necessary Kaskaska County Road Commission driveway permits that may be required.

### 4.2 - Maintenance

#### 4.2.5 - Two wheel drive condition (2/04)

All existing trail roads on and adjacent to the sale area must be passable by two-wheel drive traffic for the duration of the sale.

## 5 - Operations

### 5.1 - Notification

#### 5.1.1 - Pre-sale conference (10/16)

A pre-sale conference on site between the Purchaser and sale administrator is required prior to beginning any operations to determine landing and road locations. The Unit Manager or his/her representative must be contacted at least 3 days in advance to schedule the conference.

### 5.2 - Conduct of Operations

#### 5.2.1 - Slash

##### 5.2.1.8 - Slash height (12/08)

No slash or tree tops may exceed 24 inches in height.

##### 5.2.1.10 - No slash in openings (5/10)

No brush or logging debris is to be left in the maintained wildlife opening which is indicated by G0 or VO on the Timber Sale Map. Any damage to the opening shall be repaired according to specifications of the Unit Manager or his/her representative.

#### 5.2.2 - Hazard Trees/Snags

##### 5.2.2.1 - Den trees (10/16)

Obvious hollow and/or den trees shall be protected and left standing unless they are a safety hazard.

#### 5.2.3 - Operating Restrictions

##### 5.2.3.3 - Bark slippage restriction (3/09)

Within Payment Unit(s) 1, 2, 3, and 4, unless changed by written agreement, cutting and skidding are not permitted during the period of April 15 to July 15. This restriction is because of bark slippage.

##### 5.2.3.11 - Coppice regeneration protection (4/10)

Any post harvest operations, such as chipping, must be completed before sprouting of regeneration occurs. If it is anticipated that chipping will be delayed, then tops shall be carried to one central location or left unchipped. The Unit Manager or his/her representative may cease such operations if sprouting occurs before the operation is complete.

#### 5.2.29 - Shrub protection (9/07)

Do not cut or damage hawthorn, witch-hazel, dogwood or junberry. These woody-shrub plants are highly beneficial to various wildlife species.

#### 5.2.32 - Decking/landing restoration (9/13)

All decking and landing areas must have the surface area restored to a condition equal to or better than before. This is to ensure the proper regeneration of the stand. Wood debris, chips and "cookies" from trimmings must be removed or scattered away from landing and loading areas and may not be windrowed on the edge.

#### 5.2.38 - No decking against live trees (2/04)

Cut products may not be decked against unmarked or designated leave trees.

#### 5.2.39 - ORV trail/route protection (12/12)

The ORV / motorcycle trail or route and is shown on the Timber Sale Map. Do not damage posts with orange ORV markers. Trees with orange ORV markers shall be cut off above the markers and at least 5 feet above ground. All stumps within 5 feet of the trail must be cut flush with the ground. Maintain a 20 foot wide slash, debris, and rut free zone daily using the ORV trail or route as the centerline. Do not run equipment down the ORV trail or route. Skidding across the trail or route may only occur in locations approved by the sale administrator.

#### 5.2.41 - Snowmobile trail protection (9/11)

The snowmobile trail is shown on the Timber Sale Map. Do not cut or damage posts with orange trail markers or traffic control signs. If the trail is used, it must be maintained and restored to a condition equal to or better than before the sale. The road maintenance / restoration must be done prior to December 1. If the trail road is to be used for hauling during the snowmobile season, then a snow covered base must be left on the trail. This trail cannot be sanded. No hauling will be permitted on Friday, Saturday or Sunday, December 1 through March 31. Maintain a 20 foot wide slash, debris, and rut free zone daily using the snowmobile trail as the centerline. No decking of forest products will be permitted along the snowmobile trail. All stumps within 20 feet of the snowmobile trail must be cut at ground level.

### 5.4 - Soil Protection

#### 5.4.1 - Rutting restriction, general (7/16)

Operations are to cease immediately if equipment and weather conditions result in rutting of roads and/or skid trails which is 12 inches or greater in depth and 50 feet in length. The Unit Manager or his/her representative may restrict hauling and/or skidding if ruts exceed the specified depth. With the Unit Manager or his/her representative's approval, the Purchaser may return to the area when the risk of rutting has decreased.

#### 5.4.2 - Skid trails (2/04)

Skid trails up and down slopes should be avoided. If however this is unavoidable, these trails will be left in a non-erodible condition using water bars, logs, and slash. Placing of slash on these skid trails while logging is ongoing may alleviate need for any further action. At the direction of the sale administrator, seed, fertilizer, and mulch may also be required.

### 5.8 - Protection of Endangered Species

#### 5.8.5 - Protection of raptor nests (3/13)

All trees with raptor nests will be protected if found during harvesting operations. Notification will be made to the Unit Manager or his/her representative who will notify the Wildlife Biologist so an on-site evaluation and recommendation can be made, if necessary.

## 6 - Safety and Fire Prevention

### 6.2 - Signing

#### 6.2.2 - Snowmobile trail posting (8/09)

The Purchaser is responsible for posting and maintaining caution signs on the snowmobile trail prior to beginning operations during the snowmobile season (approximately December 1 to March 31). The trail must be posted at appropriate distances from the sale area to warn of logging activity and truck traffic. Signs must be removed when harvest operations are suspended or completed. The Purchaser will provide these signs.

#### 6.2.3 - Recreational trail posting (2/10)

The Purchaser is responsible for posting and maintaining caution signs on the motorcycle trail prior to beginning operations. The trail must be posted at appropriate distances from the sale area to warn of logging activity and truck traffic at both ends of the trail. Signs must be removed when harvest operations are suspended or completed. The Purchaser will provide these signs.



# TIMBER SALE MAP

This information provided by authority of Part 525, 1994 PA 451, as amended.

Forest Management Unit Traverse City	County Kalkaska County	Mapped By Peterson	Date 07/26/2017	Page 1	of 1
Township 26N	Range 05W & 06W	Section(s) and Subdivision(s) 05W - Sec 18 & Sec 7, Sec 06W - Sec 12 & 13.	Scale 1:15,840		

### Cover Type

A = Aspen	H = Hemlock	N = Marsh	U = Upland Brush
B = Paper Birch	J = Jack Pine	O = Oak	UM = Upland Mixed
C = Cedar	L = Lowland Brush	P = Lowland Poplar	V = Bog or Marsh
D = Treed Bog	LM = Lowland Mixed	Q = Mixed Swamp Conifer	W = White Pine
E = Swamp Hdwoods	M = Mpl, Bch, Brch	R = Red Pine	X = Non Stocked
F = Spruce Fir	MC = Mixed Conifer	S = Black Spruce	Z = Water
G = Grass	MD = Mixed Deciduous	T = Tamarack	

### Density

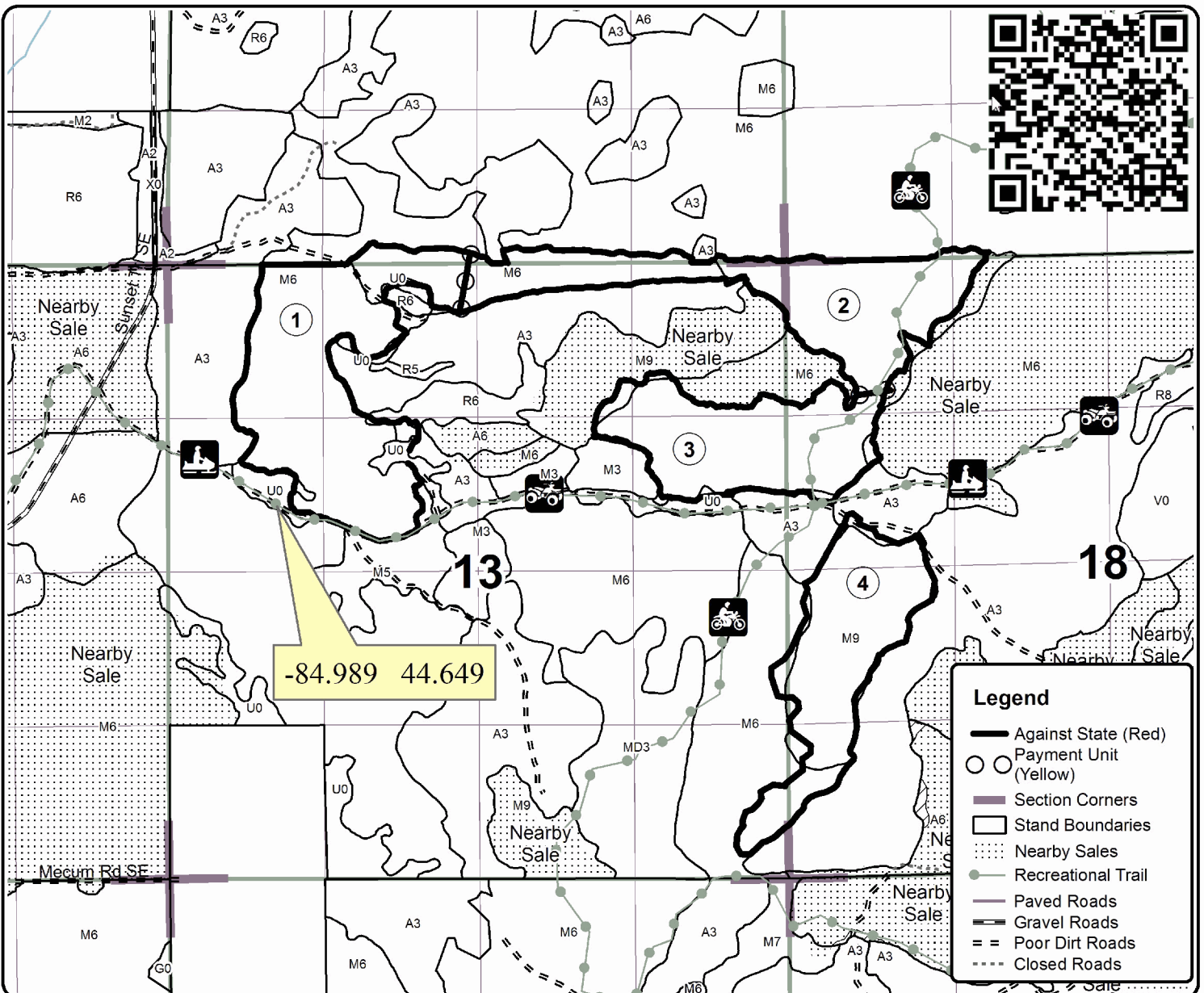
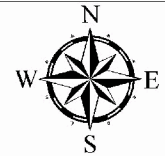
0 = Non Stocked	5 = Pole Timber Medium
1 = Seedling Sapling Poor	6 = Pole Timber Well
2 = Seedling Sapling Medium	7 = Saw Timber Poor
3 = Seedling Sapling Well	8 = Saw Timber Medium
4 = Pole Timber Poor	9 = Saw Timber Well

PU	Acres	PU	Acres
1	65.2	4	41.1
2	47.1		
3	41.8		

## 3 Honks Hardwoods

### Compartment 126

### 195.2 Acres





# TIMBER SALE INFORMATION

## Found Wallet Mix (61-145-17)

Kalkaska County (Advertised Price \$90,721.90)

A timber sale contract for this lump sum, sealed bid timber sale will be awarded to the responsible bidder offering the highest sealed bid price. Bids must be at or above the following advertised price for each species:

<u>PRODUCTS &amp; SPECIES</u>	<u>ESTIMATED UNITS*</u>	<u>ADVERTISED PRICE</u>
Sawtimber		
B. T. Aspen	144.70 MBF	\$ 113.00 / MBF
Basswood	7.90 MBF	\$ 116.00 / MBF
Beech	37.20 MBF	\$ 98.00 / MBF
Quaking Aspen	6.50 MBF	\$ 113.00 / MBF
Red Maple	46.20 MBF	\$ 143.00 / MBF
Sugar Maple	36.40 MBF	\$ 300.00 / MBF
Pulpwood		
Basswood	12.00 Cords	\$ 26.30 / Cord
Beech	244.00 Cords	\$ 19.40 / Cord
Mixed Aspen	1,348.00 Cords	\$ 21.50 / Cord
Mixed Hardwood	895.00 Cords	\$ 19.40 / Cord
White Pine	10.00 Cords	\$ 15.35 / Cord

\* The total volume is statistically estimated within plus (+) or minus (-) 12.01 percent. The estimated units are final and not subject to adjustment. Prospective bidders are urged to examine this timber and to make their own estimates of quantity and quality.

### **BOND AND PAYMENT SCHEDULE:**

1. A bond in the amount of \$9,072.00 to insure faithful performance of the conditions of the contract will be deposited by the successful bidder within 21 days of the sale award.
2. Cutting in any sale or unit without the required advance payment would be considered a trespass.
3. Total payment must be paid in advance or according to the following schedule:
  - (a) Ten percent (10%) of the sale value must be paid within 21 days of the sale award.
  - (b) The 10% down payment will be credited towards the first unit cut.
4. If no cutting takes place, the 10% down payment will not be refunded.
5. Operations on the contract issued will terminate on 12/31/2019.

**Description of Timber by Payment Unit (PU)**

PU	MARKET GROUP	PRODUCT	QUANTITY	UNIT	ACRES	ADVERTISE PRICE	
1	B. T. Aspen	Sawtimber	58.7	MBF	33.4	\$30,570.40	
	Beech		18.5	MBF			
	Red Maple		26.7	MBF			
	Sugar Maple		7.7	MBF			
	Beech		Pulpwood	77.0			Cords
	Mixed Aspen			430.0			Cords
	<i>B. T. Aspen</i>			430.0			<i>Cords</i>
	Mixed Hardwood			271.0			Cords
	<i>Black Cherry</i>			7.0			<i>Cords</i>
	<i>Red Maple</i>			184.0			<i>Cords</i>
	<i>Sugar Maple</i>			80.0			<i>Cords</i>
2	B. T. Aspen	Sawtimber	17.2	MBF	32.0	\$16,762.70	
	Beech		13.9	MBF			
	Red Maple		4.2	MBF			
	Sugar Maple		9.7	MBF			
	Beech		Pulpwood	132.0			Cords
	Mixed Aspen			145.0			Cords
	<i>B. T. Aspen</i>			145.0			<i>Cords</i>
	Mixed Hardwood			220.0			Cords
	<i>Ironwood</i>			9.0			<i>Cords</i>
	<i>Red Maple</i>			50.0			<i>Cords</i>
	<i>Sugar Maple</i>			161.0			<i>Cords</i>
3	B. T. Aspen	Sawtimber	44.9	MBF	41.0	\$27,596.60	
	Basswood		7.9	MBF			
	Beech		4.8	MBF			
	Quaking Aspen		6.5	MBF			
	Red Maple		12.1	MBF			
	Sugar Maple		9.1	MBF			
	Basswood		Pulpwood	12.0			Cords
	Beech			33.0			Cords
	Mixed Aspen			503.0			Cords
	<i>B. T. Aspen</i>			415.0			<i>Cords</i>
	<i>Quaking Aspen</i>			88.0			<i>Cords</i>
	Mixed Hardwood			215.0			Cords
	<i>Black Cherry</i>			3.0			<i>Cords</i>
	<i>Ironwood</i>			3.0			<i>Cords</i>
	<i>Red Maple</i>			65.0			<i>Cords</i>
	<i>Sugar Maple</i>			144.0			<i>Cords</i>
4	B. T. Aspen	Sawtimber	23.9	MBF	40.0	\$15,792.20	
	Red Maple		3.2	MBF			
	Sugar Maple		9.9	MBF			
	Beech	Pulpwood	2.0	Cords			
	Mixed Aspen		270.0	Cords			
	<i>B. T. Aspen</i>		87.0	<i>Cords</i>			
	<i>Quaking Aspen</i>		183.0	<i>Cords</i>			
	Mixed Hardwood		189.0	Cords			
	<i>Black Cherry</i>		19.0	<i>Cords</i>			
	<i>Red Maple</i>		64.0	<i>Cords</i>			
	<i>Red Oak</i>		8.0	<i>Cords</i>			
	<i>Sugar Maple</i>		98.0	<i>Cords</i>			
	White Pine		10.0	Cords			
TOTAL:			278.9	MBF			
TOTAL:			2,509.0	Cords			

# Sale Specific Conditions & Requirements

**Sale Name: Found Wallet Mix**

**Sale Number: 61-145-17 Seq#: 1**

## 1 - Sale Area

### 1.2 - Boundaries

#### 1.2.1 - Painted boundaries (1/14)

The sale boundary and Payment Unit boundaries are marked and identified by blue, red and yellow paint. Exterior sale boundary lines against private property are marked with blue paint. Exterior sale boundary lines against state are marked with red paint. Interior Payment Unit boundaries are marked with yellow paint. The painted boundary and Payment Unit line trees are not Included Timber and are to be protected unless marked with orange paint.

## 2 - Timber Specifications

### 2.1 - Included Timber

#### 2.1.1 - Clearcut unit(s) with unmerchantable trees (6/14)

Within Payment Unit(s) 4, cut all trees that are two (2) inches or more at DBH.

#### 2.1.3 - Cut tree marked unit(s) (12/08)

Within Payment Unit(s) 1, 2, and 3, all trees are designated for cutting when marked with orange paint above and below stump height, regardless of merchantability. In addition, cut all aspen, all ironwood, and all beech except for those marked with an orange "X."

## 3 - Payments

### 3.3 - Pre-measured Sales

#### 3.3.4 - Dividing payment units (7/14)

Payment Unit(s) greater than \$15,000 may be divided at the request of the Purchaser and upon approval of the Unit Manager. Dividing Payment Units is a contract modification which requires a Timber Sale Contract Supplement. There will be only one division per Payment Unit.

## 4 - Transportation

### 4.1 - Construction

#### 4.1.4 - Timber removed for construction (12/09)

Trees cut or damaged in the process of pre-approved road, landing or skid trail construction will be decked in an area separate from other Designated Timber and not removed until measured by the sale administrator. Payment will be made at the specified Purchase Unit Price.

#### 4.1.6 - Road construction (1/09)

Construction of new roads or improvements of existing roads shall be done in such a way as to minimize the environmental and visual impacts. Merchantable trees shall be cut and utilized unless otherwise directed. Non-merchantable trees shall be severed and laid flat on the ground. Slash shall be scattered, and not left in windrows and kept a minimum of 10 feet back from the road edge. Stumps shall be set upright, not left on edge, and be moved at least 10 feet away from the road edge. Disturbed soil shall be feathered into the woods and not left in berms or windrows.

#### 4.1.7 - Road closure (10/11)

All new roads built into the sale must be blocked to vehicle traffic within 30 days of completion of hauling. Overgrown roads (i.e. roads shown as "Closed" on the Timber Sale Map) that are reopened shall be considered new roads. In general, this will require constructing a four (4') foot high berm of stumps and logs covered with earth. These roads must be rendered impassable to cars, trucks and ORVs. All stumps from road building and landing construction should be reserved to block any newly constructed roads upon completion of the sale. Temporary berms may be required if no sale activity occurs for 30 or more consecutive days. Contact the sale administrator for specific details of design and placement.

#### 4.1.11 - Permits (2/12)

The Purchaser will secure any necessary Kalkaska County Road Commission driveway permits that may be required.

## 5 - Operations

### 5.1 - Notification

#### 5.1.1 - Pre-sale conference (10/16)

A pre-sale conference on site between the Purchaser and sale administrator is required prior to beginning any operations to determine landing and road locations. The Sale Administrator must be contacted at least 3 days in advance to schedule the conference.

### 5.2 - Conduct of Operations

#### 5.2.1 - Slash

##### 5.2.1.8 - Slash height (12/08)

No slash or tree tops may exceed 36 inches in height.

##### 5.2.1.10 - No slash in openings (5/10)

No brush or logging debris is to be left in the openings which are indicated by U0 on the Timber Sale Map. Any damage to the opening shall be repaired according to specifications of the Unit Manager or his/her representative.

#### 5.2.2 - Hazard Trees/Snags

##### 5.2.2.1 - Den trees (10/16)

Obvious hollow and/or den trees shall be protected and left standing unless they are a safety hazard.

#### 5.2.3 - Operating Restrictions

##### 5.2.3.3 - Bark slippage restriction (3/09)

Within Payment Unit(s) 1, 2, and 3, unless changed by written agreement, cutting and skidding are not permitted during the period of April 15 to July 15. This restriction is because of bark slippage and oak wilt concerns.

##### 5.2.3.11 - Coppice regeneration protection (4/10)

Any post harvest operations, such as chipping, must be completed before sprouting of regeneration occurs. If it is anticipated that chipping will be delayed, then tops shall be carried to one central location or left unchipped. The Unit Manager or Sale Administrator may cease such operations if sprouting occurs before the operation is complete.

#### 5.2.29 - Shrub protection (9/07)

Do not cut or damage hawthorn, witch-hazel, dogwood or juneberry. These woody-shrub plants are highly beneficial to various wildlife species.

#### 5.2.32 - Decking/landing restoration (9/13)

All decking and landing areas must have the surface area restored to a condition equal to or better than before. This is to ensure the proper regeneration of the stand. Wood debris, chips and "cookies" from trimmings must be removed or scattered away from landing and loading areas and may not be windrowed on the edge.

#### 5.2.38 - No decking against live trees (2/04)

Cut products may not be decked against unmarked or designated leave trees.

### 5.4 - Soil Protection

#### 5.4.1 - Rutting restriction, general (7/16)

Operations are to cease immediately if equipment and weather conditions result in rutting of roads and/or skid trails which is 12 inches or greater in depth and 50 feet in length. The Unit Manager or his/her representative may restrict hauling and/or skidding if ruts exceed the specified depth. With the Unit Manager or his/her representative's approval, the Purchaser may return to the area when the risk of rutting has decreased.

#### 5.4.2 - Skid trails (2/04)

Skid trails up and down slopes should be avoided. If however this is unavoidable, these trails will be left in a non-erodible condition using water bars, logs, and slash. Placing of slash on these skid trails while logging is ongoing may alleviate need for any further action. At the direction of the sale administrator, seed, fertilizer, and mulch may also be required.

### 5.8 - Protection of Endangered Species



#### 5.8.5 - Protection of raptor nests (3/13)

All trees with raptor nests will be protected if found during harvesting operations. Notification will be made to the Unit Manager or his/her representative who will notify the Wildlife Biologist so an on-site evaluation and recommendation can be made, if necessary.

### **6 - Safety and Fire Prevention**

#### 6.2 - Signing

##### 6.2.1 - Road posting (9/09)

The Purchaser is responsible for posting and maintaining caution signs on roads used for hauling (Sunset Trail and/or Mecum Road) prior to beginning operations. The road must be posted 200 feet from both ends of the sale area to warn of logging activity and truck traffic. Signs must be removed when harvest operations are suspended or completed. The Purchaser will provide these signs.



# TIMBER SALE MAP

This information provided by authority of Part 525, 1994 PA 451, as amended.

Sale Number	Year
61-145	2017

Forest Management Unit Traverse City	County Kalkaska	Mapped By Armstrong	Date 6/27/2017	Page 1	of 1
Township 26N	Range 6W	Section(s) and Subdivision(s) Section 13: NWSW; Section 14: SE1/4, SENE	Scale 1:15,840		

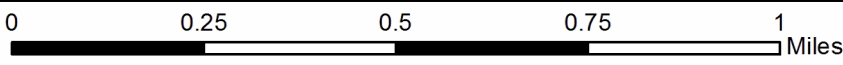
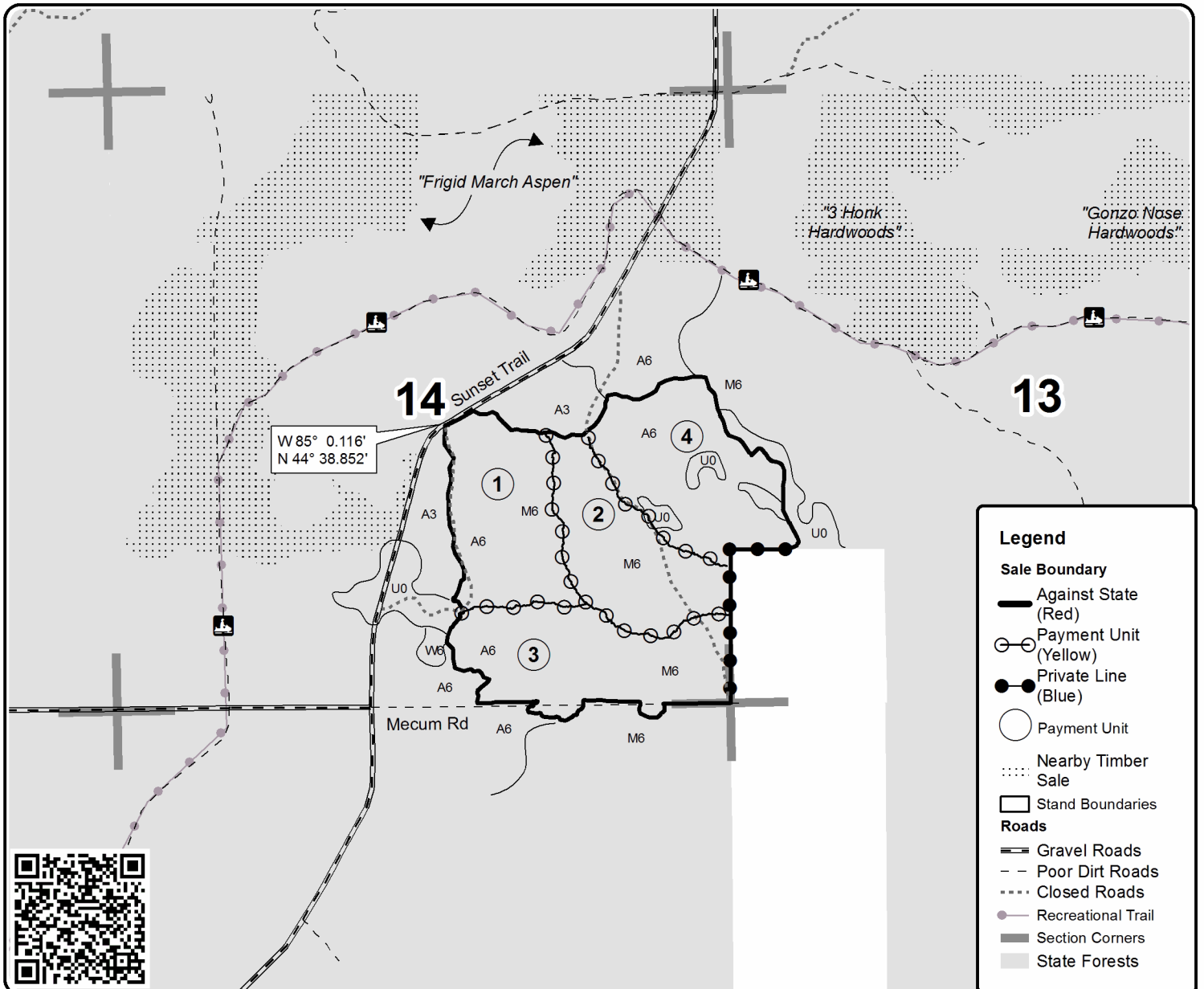
Cover Type				Density	
A = Aspen	H = Hemlock	N = Marsh	U = Upland Brush	0 = Non Stocked	5 = Pole Timber Medium
B = Paper Birch	J = Jack Pine	O = Oak	UM = Upland Mixed	1 = Seedling Sapling Poor	6 = Pole Timber Well
C = Cedar	L = Lowland Brush	P = Lowland Poplar	V = Bog or Marsh	2 = Seedling Sapling Medium	7 = Saw Timber Poor
D = Treed Bog	LM = Lowland Mixed	Q = Mixed Swamp Conifer	W = White Pine	3 = Seedling Sapling Well	8 = Saw Timber Medium
E = Swamp Hdwoods	M = Mpl, Bch, Brch	R = Red Pine	X = Non Stocked	4 = Pole Timber Poor	9 = Saw Timber Well
F = Spruce Fir	MC = Mixed Conifer	S = Black Spruce	Z = Water		
G = Grass	MD = Mixed Deciduous	T = Tamarack			

Unit	Acres	Unit	Acres
1	33.4	3	41.0
2	32.0	4	40.0

## Found Wallet Mix

### Compartment 126

146.4 acres



## TIMBER SALE INFORMATION

### Power Line Pine (61-148-17)

Kalkaska County (Advertised Price \$123,736.80)

SALE NOTE: A recreation site such as a trail, pathway, or campground is within the sale area or the vicinity. Certain restrictions/specifications may be applicable including time restrictions.

A timber sale contract for this lump sum, sealed bid timber sale will be awarded to the responsible bidder offering the highest sealed bid price. Bids must be at or above the following advertised price for each species:

<u>PRODUCTS &amp; SPECIES</u>	<u>ESTIMATED UNITS*</u>		<u>ADVERTISED PRICE</u>
<b>Sawtimber</b>			
B. T. Aspen	13.30	MBF	\$ 113.00 / MBF
BI/R/Hybrid Oak	16.10	MBF	\$ 116.00 / MBF
Black Cherry	0.90	MBF	\$ 210.00 / MBF
Red Maple	23.20	MBF	\$ 143.00 / MBF
Red Oak	40.20	MBF	\$ 204.00 / MBF
Red Pine	341.70	MBF	\$ 121.00 / MBF
White Oak	0.70	MBF	\$ 60.00 / MBF
White Pine	120.40	MBF	\$ 78.00 / MBF
Yellow Birch	1.30	MBF	\$ 154.00 / MBF
<b>Pulpwood</b>			
Balsam Fir	2.00	Cords	\$ 15.85 / Cord
Jack Pine	550.00	Cords	\$ 14.70 / Cord
Mixed Aspen	503.00	Cords	\$ 21.50 / Cord
Mixed Hardwood	441.00	Cords	\$ 19.40 / Cord
Mixed Oak	314.00	Cords	\$ 13.90 / Cord
Mixed Spruce	21.00	Cords	\$ 26.30 / Cord
Red Pine	439.00	Cords	\$ 39.15 / Cord
White Pine	527.00	Cords	\$ 15.35 / Cord

\* The total volume is statistically estimated within plus (+) or minus (-) 7.19 percent. The estimated units are final and not subject to adjustment. Prospective bidders are urged to examine this timber and to make their own estimates of quantity and quality.

#### **BOND AND PAYMENT SCHEDULE:**

1. A bond in the amount of \$6,187.00 to insure faithful performance of the conditions of the contract will be deposited by the successful bidder within 21 days of the sale award.
2. Cutting in any sale or unit without the required advance payment would be considered a trespass.
3. Total payment must be paid in advance or according to the following schedule:
  - (a) Ten percent (10%) of the sale value must be paid within 21 days of the sale award.
  - (b) The 10% down payment will be credited towards the first unit cut.
4. If no cutting takes place, the 10% down payment will not be refunded.
5. Operations on the contract issued will terminate on 12/31/2020.

**Description of Timber by Payment Unit (PU)**

PU	MARKET GROUP	PRODUCT	QUANTITY	UNIT	ACRES	ADVERTISE PRICE		
1	B. T. Aspen	Sawtimber	5.2	MBF	40.5	\$23,905.70		
	BI/R/Hybrid Oak		2.2	MBF				
	Black Cherry		0.9	MBF				
	Red Maple		10.1	MBF				
	Red Oak		7.8	MBF				
	Red Pine		64.7	MBF				
	White Pine		21.9	MBF				
	Balsam Fir		Pulpwood	2.0			Cords	
	Mixed Aspen			142.0			Cords	
	<i>B. T. Aspen</i>			121.0			<i>Cords</i>	
	<i>Quaking Aspen</i>			21.0			<i>Cords</i>	
	Mixed Hardwood			90.0			Cords	
	<i>Black Cherry</i>			2.0			<i>Cords</i>	
	<i>Red Maple</i>			88.0			<i>Cords</i>	
	Mixed Oak			44.0			Cords	
	<i>BI/R/Hybrid Oak</i>			12.0			<i>Cords</i>	
	<i>Red Oak</i>			32.0			<i>Cords</i>	
	Mixed Spruce			5.0			Cords	
	<i>Black Spruce</i>		Sawtimber	0.5			MBF	
	<i>Black Spruce</i>	Pulpwood		4.0			Cords	
Red Pine	89.0		Cords					
White Pine	81.0	Cords						
2	B. T. Aspen	Sawtimber	1.0	MBF	15.6	\$11,247.05		
	Red Maple		5.9	MBF				
	Red Pine		21.5	MBF				
	White Pine		20.6	MBF				
	Mixed Aspen		Pulpwood	132.0			Cords	
	<i>B. T. Aspen</i>			132.0			<i>Cords</i>	
	Mixed Hardwood			59.0			Cords	
	<i>Red Maple</i>			59.0			<i>Cords</i>	
	Mixed Spruce			16.0			Cords	
	<i>White Spruce</i>			16.0			<i>Cords</i>	
	Red Pine	17.0		Cords				
White Pine	66.0	Cords						
3	B. T. Aspen	Sawtimber	7.1	MBF	175.4	\$88,584.05		
	BI/R/Hybrid Oak		13.9	MBF				
	Red Maple		7.2	MBF				
	Red Oak		32.4	MBF				
	Red Pine		255.5	MBF				
	White Oak		0.7	MBF				
	White Pine		77.9	MBF				
	Yellow Birch		1.3	MBF				
	Jack Pine		Pulpwood	550.0			Cords	
	<i>Jack Pine</i>			Sawtimber			9.0	MBF
	<i>Jack Pine</i>						Pulpwood	532.0
	Mixed Aspen			229.0				Cords
	<i>B. T. Aspen</i>			162.0			<i>Cords</i>	
	<i>Quaking Aspen</i>			67.0			<i>Cords</i>	
	Mixed Hardwood			292.0			Cords	
	<i>Red Maple</i>			291.0			<i>Cords</i>	
	<i>Yellow Birch</i>			1.0			<i>Cords</i>	
	Mixed Oak			270.0			Cords	
	<i>BI/R/Hybrid Oak</i>			83.0			<i>Cords</i>	
	<i>Red Oak</i>	179.0	<i>Cords</i>					
<i>White Oak</i>	8.0	<i>Cords</i>						
Red Pine	333.0	Cords						

**Description of Timber by Payment Unit (PU), con't**

PU	MARKET GROUP	PRODUCT	QUANTITY	UNIT	ACRES	ADVERTISE PRICE
3 con't	White Pine	Pulpwood	380.0	Cords		
TOTAL:			557.8	MBF		
TOTAL:			2,797.0	Cords		

## Sale Specific Conditions & Requirements

**Sale Name: Power Line Pine**

**Sale Number: 61-148-17 Seq#: 1**

### 1 - Sale Area

#### 1.2 - Boundaries

##### 1.2.1 - Painted boundaries (1/14)

The sale boundary and Payment Unit boundaries are marked and identified by blue and red paint. Exterior sale boundary lines against private property are marked with blue paint. Exterior sale boundary lines against state are marked with red paint. The painted boundary line trees are not Included Timber and are to be protected unless marked with orange paint.

### 2 - Timber Specifications

#### 2.1 - Included Timber

##### 2.1.3 - Cut tree marked unit(s) (12/08)

Within Payment Unit(s) 1, 2 and 3, all trees are designated for cutting when marked with orange paint above and below stump height, regardless of merchantability. In addition, cut all aspen, red maple, balsam, spruce and jack pine.

### 3 - Payments

#### 3.3 - Pre-measured Sales

##### 3.3.4 - Dividing payment units (7/14)

Payment Unit(s) may be divided at the request of the Purchaser and upon approval of the Unit Manager. Dividing Payment Units is a contract modification which requires a Timber Sale Contract Supplement.

### 4 - Transportation

#### 4.1 - Construction

##### 4.1.6 - Road construction (1/09)

Construction of new roads or improvements of existing roads shall be done in such a way as to minimize the environmental and visual impacts. Merchantable trees shall be cut and utilized unless otherwise directed. Non-merchantable trees shall be severed and laid flat on the ground. Slash shall be scattered, and not left in windrows and kept a minimum of 10 feet back from the road edge. Stumps shall be set upright, not left on edge, and be moved at least 10 feet away from the road edge. Disturbed soil shall be feathered into the woods and not left in berms or windrows.

##### 4.1.11 - Permits (2/12)

The Purchaser will secure any necessary county driveway permits that may be required.

#### 4.2 - Maintenance

##### 4.2.5 - Two wheel drive condition (2/04)

All existing trail roads on and adjacent to the sale area must be passable by two-wheel drive traffic for the duration of the sale.

### 5 - Operations

#### 5.1 - Notification

##### 5.1.1 - Pre-sale conference (10/16)

A pre-sale conference on site between the Purchaser and sale administrator is required prior to beginning any operations to determine landing and road locations. The Unit Manager or his/her representative must be contacted at least 5 days in advance to schedule the conference.

##### 5.1.3 - Well heads and natural gas pipelines (11/15)

The Purchaser is responsible for contacting the gas or pipeline company prior to operating equipment in the vicinity of well heads or natural gas pipelines. The sale can be harvested without using the pipeline ROW.

##### 5.1.4 - Post-sale conference (10/16)

A post-sale conference on site between the Purchaser and sale administrator is required 5 days prior to the completion of active logging operations to determine clean-up and repair of landings, road edges, and the fulfillment of other contract specifications.

## 5.2 - Conduct of Operations

### 5.2.2 - Hazard Trees/Snags

#### 5.2.2.1 - Den trees (10/16)

Obvious hollow and/or den trees shall be protected and left standing unless they are a safety hazard.

### 5.2.3 - Operating Restrictions

#### 5.2.3.4 - Oak wilt restriction (4/17)

Within Payment Unit(s) 1, 2 and 3, unless changed by written agreement, cutting, skidding, and hauling are not permitted during the period of April 15 to July 15. Operations may be allowed if specific steps are taken to prevent damaging uncut oak during the high risk period. Those steps include completing all road brushing before April 15th, clearing a tree-length buffer along uncut oak cover before April 15th or leaving an uncut buffer there until after July 15th. This is necessary to reduce the spread of oak wilt. For more information, contact the Unit Manager or his/her representative.

#### 5.2.3.6 - Bark beetle restriction (12/08)

In the event drought creates a high risk of pine bark beetle infestation, pine is not to be cut during the period March 1 through July 1, unless all portions of trees greater than two inches in diameter are removed from the sale area, reduced to chips, or treated to the satisfaction of the Unit Manager or his/her representative, within fifteen days of being severed from the stump. Pine log decks, pulpwood piles and treetops that are piled for chipping in the fall or winter within a 1/4 mile of susceptible sites must be removed before March 15. Residual slash must not be placed in piles or rows and must be spread over the site for quick drying. The Department of Natural Resources will exercise this specification if the risk of damage warrants.

#### 5.2.39 - ORV trail/route protection (12/12)

The ORV route and is shown on the Timber Sale Map. Do not damage posts with orange ORV markers. Trees with orange ORV markers shall be cut off above the markers and at least 5 feet above ground. All stumps within 5 feet of the trail must be cut flush with the ground. Maintain a 20 foot wide slash, debris, and rut free zone daily using the ORV route as the centerline. Skidding across the trail or route may only occur in locations approved by the sale administrator.

## 5.4 - Soil Protection

### 5.4.1 - Rutting restriction, general (7/16)

Operations are to cease immediately if equipment and weather conditions result in rutting of roads and/or skid trails which is 12 inches or greater in depth and 50 feet in length. The Unit Manager or his/her representative may restrict hauling and/or skidding if ruts exceed the specified depth. With the Unit Manager or his/her representative's approval, the Purchaser may return to the area when the risk of rutting has decreased.

## 5.8 - Protection of Endangered Species

### 5.8.5 - Protection of raptor nests (3/13)

All trees with raptor nests will be protected if found during harvesting operations. Notification will be made to the Unit Manager or his/her representative who will notify the Wildlife Biologist so an on-site evaluation and recommendation can be made, if necessary.

## 6 - Safety and Fire Prevention

### 6.2 - Signing

#### 6.2.1 - Road posting (9/09)

The Purchaser is responsible for posting and maintaining caution signs on West Crofton Road and Boardman River Road prior to beginning operations. The road must be posted at appropriate distances from the sale area to warn of logging activity and truck traffic. Signs must be removed when harvest operations are suspended or completed. The Purchaser will provide these signs.

#### 6.2.3 - Recreational trail posting (2/10)

The Purchaser is responsible for posting and maintaining caution signs on the ORV Route prior to beginning operations. The trail must be posted at appropriate distances from the sale area to warn of logging activity and truck traffic at both ends of the trail. Signs must be removed when harvest operations are suspended or completed. The Purchaser will provide these signs.





### TIMBER SALE MAP

This information provided by authority of Pari 525, 1994 PA 451, as amended.

Forest Management Unit Traverse City		County Kalkaska	Mapped By Roell	Date 07/26/2017	Page 1	of 1
Township 26N	Range 08W	Section(s) and Subdivision(s) NENE Sec8; N1/2 Sec9; S1/2NW, SENE Sec10		Scale 1:15,840		

#### Cover Type

A = Aspen	H = Hemlock	N = Marsh	U = Upland Brush
B = Paper Birch	J = Jack Pine	O = Oak	UM = Upland Mixed
C = Cedar	L = Lowland Brush	P = Lowland Poplar	V = Bog or Marsh
D = Treed Bog	LM = Lowland Mixed	Q = Mixed Swamp Conifer	W = White Pine
E = Swamp Hdwoods	M = Mpl, Boh, Bich	R = Red Pine	X = Non Stocked
F = Spruce Fir	MC = Mixed Conifer	S = Black Spruce	Z = Water
G = Grass	MD = Mixed Deciduous	T = Tamarack	

#### Density

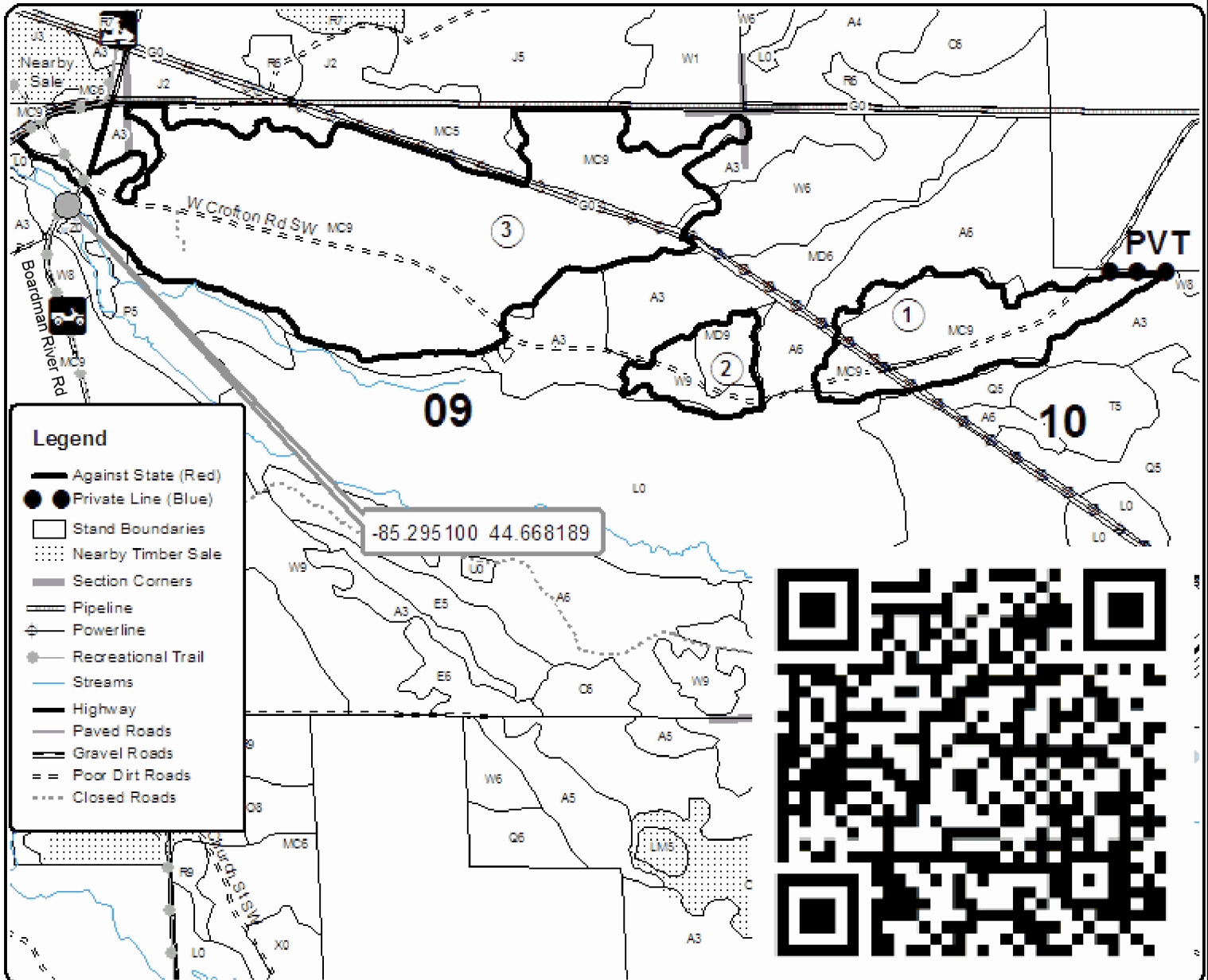
0 = Non Stocked	5 = Pole Timber Medium
1 = Seeding Sapling Poor	6 = Pole Timber Well
2 = Seeding Sapling Medium	7 = Saw Timber Poor
3 = Seeding Sapling Well	8 = Saw Timber Medium
4 = Pole Timber Poor	9 = Saw Timber Well

PU	Acres
1	40.5
2	15.6
3	175.4

## Power Line Pine

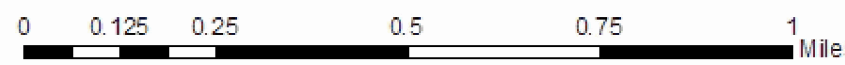
### Compartment 155

231.5 Acres



#### Legend

- Against State (Red)
- Private Line (Blue)
- Stand Boundaries
- Nearby Timber Sale
- Section Corners
- Pipeline
- Powerline
- Recreational Trail
- Streams
- Highway
- Paved Roads
- Gravel Roads
- Poor Dirt Roads
- Closed Roads





Found Wallet Mix (61-145-17)  
; Kalkaska COUNTY

In response to the notice of sale to be held 4:00 p.m. (local time) on October 16, 2017, I am hereby submitting my sealed bid (firm offer) for the following forest products to be cut. Bids for individual species must be at or above the advertised price. All non-responsive bid forms may be rejected.

<u>PRODUCTS &amp; SPECIES</u>	<u>ESTIMATED VOLUME*</u>	<u>ADVERTISED PRICE</u>	<u>BID PRICE/UNIT</u>
<b>Sawtimber</b>			
B. T. Aspen	144.70 MBF	\$ 113.00/MBF	\$ _____
Basswood	7.90 MBF	\$ 116.00/MBF	\$ _____
Beech	37.20 MBF	\$ 98.00/MBF	\$ _____
Quaking Aspen	6.50 MBF	\$ 113.00/MBF	\$ _____
Red Maple	46.20 MBF	\$ 143.00/MBF	\$ _____
Sugar Maple	36.40 MBF	\$ 300.00/MBF	\$ _____
<b>Pulpwood</b>			
Basswood	12.00 Cords	\$ 26.30/Cord	\$ _____
Beech	244.00 Cords	\$ 19.40/Cord	\$ _____
Mixed Aspen	1,348.00 Cords	\$ 21.50/Cord	\$ _____
Mixed Hardwood	895.00 Cords	\$ 19.40/Cord	\$ _____
White Pine	10.00 Cords	\$ 15.35/Cord	\$ _____

\*The volumes are statistically estimated within plus (+) or minus (-) 12.01 percent. These estimated volumes are final and not subject to adjustment. Prospective bidders are urged to examine this timber and to make their own estimates of quantity and quality.

I understand that any or all bids may be rejected. All bids must be signed and all bid items must be bid or the bid form may be rejected. I also understand that consideration and awarding a contract will be based upon my past performance and ability to complete the contract based upon equipment and staffing subject to my control.

FEDERAL ID: \_\_\_\_\_ or SOCIAL SECURITY NUMBER: \_\_\_\_\_

Company or individual bidding: \_\_\_\_\_

Company representative's name: \_\_\_\_\_

Address: \_\_\_\_\_

City: \_\_\_\_\_ State: \_\_\_\_\_ Zip: \_\_\_\_\_

IF AVAILABLE, PLEASE PLACE THE PERSONALIZED LABEL FROM YOUR PROSPECTUS IN THE ABOVE BOX.

Individual or company representative's signature: \_\_\_\_\_ Date: \_\_\_\_\_

Phone number : \_\_\_\_\_ Email (optional): \_\_\_\_\_

**THE WINNING BIDDER MUST COMPLETE THE VERIFICATION OF WORKER'S DISABILITY COMPENSATION ACT COMPLIANCE (ON REVERSE SIDE IF DOUBLE SIDED) WITHIN 21 DAYS OF SALE AWARD DATE**



<b>FOR DEPARTMENT USE ONLY</b>
Sale Number (XX - XXX - XX - XX)
Forest Management Unit:

## TIMBER SALE VERIFICATION OF WORKER'S DISABILITY COMPENSATION ACT COMPLIANCE

*As required by Act 317, P.A. 1969 (Worker's Compensation) and  
Part 5 of Act 451 of 1994, as amended.*

### VERIFICATION OF WORKER'S DISABILITY COMPENSATION ACT COMPLIANCE

- This verification must be completed and submitted within 21 days of contract award and prior to the issuance of the timber sale contract.
- In addition, if boxes 2B or 2C are checked, then Notice of Exclusion or Certificate of Insurance must be submitted within twenty-one (21) days of the contract award and prior to the issuance of the timber sale contract.
- All information must be typed or printed except for written signatures.

Please Check Appropriate Categories:

1. My business is organized as (you **must** check one of the boxes below):
  - A.  Sole Proprietorship (individual)
  - B.  Partnership
  - C.  Corporation
  
2. You **must** check one of the boxes below:
  - A.  I certify my business is a sole proprietorship and it has no employees but the sole proprietor. I am not subject to the Worker's Compensation Laws.
  - B.  I certify my business has satisfied its obligation to the Worker's Compensation Act through the use of an approved Notice of Exclusion (BWC-337, Rev. 5/96). I will provide a copy of the Notice of Exclusion within 21 days of the contract award. (For questions or a copy of the BWC-337, please call the Worker's Compensation Bureau at 517-322-1195).
  - C.  I certify my business has a Worker's Compensation Policy. I will provide an original Certificate of Insurance within twenty-one (21) days of the contract award.
  
3. If you have checked item 2(A) or 2(B), you **must** indicate the number of **both** full-time and part-time employees, other than yourself, including family members and active partners (if none, you must enter "0").

\_\_\_\_\_ Full-time Employees

\_\_\_\_\_ Part-time Employees

Name of Business		Federal ID (or) Social Security No.	
Address		Telephone (       )	
City	State	ZIP	

*I hereby certify that the above information is true and correct. I agree to notify the Michigan DNR of any changes that occur in factors affecting my coverage during any of my present and future operations.*

\_\_\_\_\_  
Signature of Owner or Authorized Representative

\_\_\_\_\_  
Title

\_\_\_\_\_  
Date

**Please complete the "SEALED BID" information on the next page**

3 Honks Hardwood (61-142-17)  
; Kalkaska COUNTY

In response to the notice of sale to be held 4:00 p.m. (local time) on October 16, 2017, I am hereby submitting my sealed bid (firm offer) for the following forest products to be cut. Bids for individual species must be at or above the advertised price. All non-responsive bid forms may be rejected.

<u>PRODUCTS &amp; SPECIES</u>	<u>ESTIMATED VOLUME*</u>	<u>ADVERTISED PRICE</u>	<u>BID PRICE/UNIT</u>
<b>Sawtimber</b>			
B. T. Aspen	8.90 MBF	\$ 113.00/MBF	\$ _____
Basswood	202.10 MBF	\$ 116.00/MBF	\$ _____
Beech	31.10 MBF	\$ 98.00/MBF	\$ _____
Black Cherry	10.80 MBF	\$ 210.00/MBF	\$ _____
Red Maple	31.80 MBF	\$ 143.00/MBF	\$ _____
Sugar Maple	88.70 MBF	\$ 300.00/MBF	\$ _____
<b>Pulpwood</b>			
Basswood	539.00 Cords	\$ 26.30/Cord	\$ _____
Beech	295.00 Cords	\$ 19.40/Cord	\$ _____
Misc. Species 1	35.00 Cords	\$ 3.75/Cord	\$ _____
Mixed Aspen	202.00 Cords	\$ 21.50/Cord	\$ _____
Mixed Hardwood	1,195.00 Cords	\$ 19.40/Cord	\$ _____

\*The volumes are statistically estimated within plus (+) or minus (-) 9.12 percent. These estimated volumes are final and not subject to adjustment. Prospective bidders are urged to examine this timber and to make their own estimates of quantity and quality.

I understand that any or all bids may be rejected. All bids must be signed and all bid items must be bid or the bid form may be rejected. I also understand that consideration and awarding a contract will be based upon my past performance and ability to complete the contract based upon equipment and staffing subject to my control.

FEDERAL ID: \_\_\_\_\_ or SOCIAL SECURITY NUMBER: \_\_\_\_\_

Company or individual bidding: \_\_\_\_\_

Company representative's name: \_\_\_\_\_

Address: \_\_\_\_\_

City: \_\_\_\_\_ State: \_\_\_\_\_ Zip: \_\_\_\_\_

IF AVAILABLE, PLEASE PLACE THE PERSONALIZED LABEL FROM YOUR PROSPECTUS IN THE ABOVE BOX.

Individual or company representative's signature: \_\_\_\_\_ Date: \_\_\_\_\_

Phone number : \_\_\_\_\_ Email (optional): \_\_\_\_\_

**THE WINNING BIDDER MUST COMPLETE THE VERIFICATION OF WORKER'S DISABILITY COMPENSATION ACT COMPLIANCE (ON REVERSE SIDE IF DOUBLE SIDED) WITHIN 21 DAYS OF SALE AWARD DATE**



<b>FOR DEPARTMENT USE ONLY</b>
Sale Number (XX - XXX - XX - XX)
Forest Management Unit:

## TIMBER SALE VERIFICATION OF WORKER'S DISABILITY COMPENSATION ACT COMPLIANCE

*As required by Act 317, P.A. 1969 (Worker's Compensation) and  
Part 5 of Act 451 of 1994, as amended.*

### VERIFICATION OF WORKER'S DISABILITY COMPENSATION ACT COMPLIANCE

- This verification must be completed and submitted within 21 days of contract award and prior to the issuance of the timber sale contract.
- In addition, if boxes 2B or 2C are checked, then Notice of Exclusion or Certificate of Insurance must be submitted within twenty-one (21) days of the contract award and prior to the issuance of the timber sale contract.
- All information must be typed or printed except for written signatures.

Please Check Appropriate Categories:

1. My business is organized as (you **must** check one of the boxes below):
  - A.  Sole Proprietorship (individual)
  - B.  Partnership
  - C.  Corporation
  
2. You **must** check one of the boxes below:
  - A.  I certify my business is a sole proprietorship and it has no employees but the sole proprietor. I am not subject to the Worker's Compensation Laws.
  - B.  I certify my business has satisfied its obligation to the Worker's Compensation Act through the use of an approved Notice of Exclusion (BWC-337, Rev. 5/96). I will provide a copy of the Notice of Exclusion within 21 days of the contract award. (For questions or a copy of the BWC-337, please call the Worker's Compensation Bureau at 517-322-1195).
  - C.  I certify my business has a Worker's Compensation Policy. I will provide an original Certificate of Insurance within twenty-one (21) days of the contract award.
  
3. If you have checked item 2(A) or 2(B), you **must** indicate the number of **both** full-time and part-time employees, other than yourself, including family members and active partners (if none, you must enter "0").

\_\_\_\_\_ Full-time Employees

\_\_\_\_\_ Part-time Employees

Name of Business		Federal ID (or) Social Security No.	
Address		Telephone (       )	
City	State	ZIP	

*I hereby certify that the above information is true and correct. I agree to notify the Michigan DNR of any changes that occur in factors affecting my coverage during any of my present and future operations.*

\_\_\_\_\_  
Signature of Owner or Authorized Representative

\_\_\_\_\_  
Title

\_\_\_\_\_  
Date

**Please complete the "SEALED BID" information on the next page**

Power Line Pine (61-148-17)  
; Kalkaska COUNTY

In response to the notice of sale to be held 4:00 p.m. (local time) on October 16, 2017, I am hereby submitting my sealed bid (firm offer) for the following forest products to be cut. Bids for individual species must be at or above the advertised price. All non-responsive bid forms may be rejected.

<u>PRODUCTS &amp; SPECIES</u>	<u>ESTIMATED VOLUME*</u>	<u>ADVERTISED PRICE</u>	<u>BID PRICE/UNIT</u>
<b>Sawtimber</b>			
B. T. Aspen	13.30 MBF	\$ 113.00/MBF	\$ _____
Bl/R/Hybrid Oak	16.10 MBF	\$ 116.00/MBF	\$ _____
Black Cherry	0.90 MBF	\$ 210.00/MBF	\$ _____
Red Maple	23.20 MBF	\$ 143.00/MBF	\$ _____
Red Oak	40.20 MBF	\$ 204.00/MBF	\$ _____
Red Pine	341.70 MBF	\$ 121.00/MBF	\$ _____
White Oak	0.70 MBF	\$ 60.00/MBF	\$ _____
White Pine	120.40 MBF	\$ 78.00/MBF	\$ _____
Yellow Birch	1.30 MBF	\$ 154.00/MBF	\$ _____
<b>Pulpwood</b>			
Balsam Fir	2.00 Cords	\$ 15.85/Cord	\$ _____
Jack Pine	550.00 Cords	\$ 14.70/Cord	\$ _____
Mixed Aspen	503.00 Cords	\$ 21.50/Cord	\$ _____
Mixed Hardwood	441.00 Cords	\$ 19.40/Cord	\$ _____
Mixed Oak	314.00 Cords	\$ 13.90/Cord	\$ _____
Mixed Spruce	21.00 Cords	\$ 26.30/Cord	\$ _____
Red Pine	439.00 Cords	\$ 39.15/Cord	\$ _____
White Pine	527.00 Cords	\$ 15.35/Cord	\$ _____

\*The volumes are statistically estimated within plus (+) or minus (-) 7.19 percent. These estimated volumes are final and not subject to adjustment. Prospective bidders are urged to examine this timber and to make their own estimates of quantity and quality.

I understand that any or all bids may be rejected. All bids must be signed and all bid items must be bid or the bid form may be rejected. I also understand that consideration and awarding a contract will be based upon my past performance and ability to complete the contract based upon equipment and staffing subject to my control.

FEDERAL ID: \_\_\_\_\_ or SOCIAL SECURITY NUMBER: \_\_\_\_\_

Company or individual bidding: \_\_\_\_\_

Company representative's name: \_\_\_\_\_

Address: \_\_\_\_\_

City: \_\_\_\_\_ State: \_\_\_\_\_ Zip: \_\_\_\_\_

IF AVAILABLE, PLEASE PLACE THE PERSONALIZED LABEL FROM YOUR PROSPECTUS IN THE ABOVE BOX.

Individual or company representative's signature: \_\_\_\_\_ Date: \_\_\_\_\_

Phone number : \_\_\_\_\_ Email (optional): \_\_\_\_\_

**THE WINNING BIDDER MUST COMPLETE THE VERIFICATION OF WORKER'S DISABILITY COMPENSATION ACT COMPLIANCE (ON REVERSE SIDE IF DOUBLE SIDED) WITHIN 21 DAYS OF SALE AWARD DATE**



<b>FOR DEPARTMENT USE ONLY</b>
Sale Number (XX - XXX - XX - XX)
Forest Management Unit:

## TIMBER SALE VERIFICATION OF WORKER'S DISABILITY COMPENSATION ACT COMPLIANCE

*As required by Act 317, P.A. 1969 (Worker's Compensation) and  
Part 5 of Act 451 of 1994, as amended.*

### VERIFICATION OF WORKER'S DISABILITY COMPENSATION ACT COMPLIANCE

- This verification must be completed and submitted within 21 days of contract award and prior to the issuance of the timber sale contract.
- In addition, if boxes 2B or 2C are checked, then Notice of Exclusion or Certificate of Insurance must be submitted within twenty-one (21) days of the contract award and prior to the issuance of the timber sale contract.
- All information must be typed or printed except for written signatures.

Please Check Appropriate Categories:

1. My business is organized as (you **must** check one of the boxes below):
  - A.  Sole Proprietorship (individual)
  - B.  Partnership
  - C.  Corporation
2. You **must** check one of the boxes below:
  - A.  I certify my business is a sole proprietorship and it has no employees but the sole proprietor. I am not subject to the Worker's Compensation Laws.
  - B.  I certify my business has satisfied its obligation to the Worker's Compensation Act through the use of an approved Notice of Exclusion (BWC-337, Rev. 5/96). I will provide a copy of the Notice of Exclusion within 21 days of the contract award. (For questions or a copy of the BWC-337, please call the Worker's Compensation Bureau at 517-322-1195).
  - C.  I certify my business has a Worker's Compensation Policy. I will provide an original Certificate of Insurance within twenty-one (21) days of the contract award.
3. If you have checked item 2(A) or 2(B), you **must** indicate the number of **both** full-time and part-time employees, other than yourself, including family members and active partners (if none, you must enter "0").

\_\_\_\_\_ Full-time Employees                      \_\_\_\_\_ Part-time Employees

Name of Business		Federal ID (or) Social Security No.	
Address		Telephone (        )	
City	State	ZIP	

*I hereby certify that the above information is true and correct. I agree to notify the Michigan DNR of any changes that occur in factors affecting my coverage during any of my present and future operations.*

\_\_\_\_\_  
Signature of Owner or Authorized Representative

\_\_\_\_\_                      \_\_\_\_\_  
Title                                      Date

**Please complete the "SEALED BID" information on the next page**